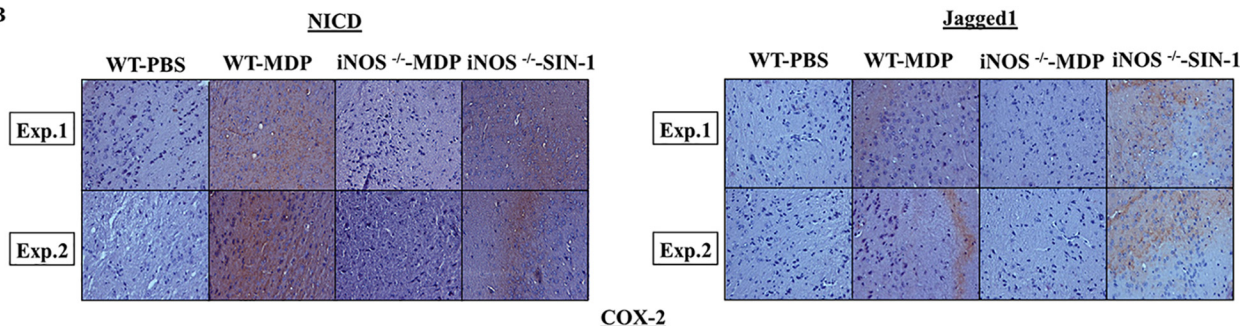


Correction: Intracellular pathogen sensor NOD2 programs macrophages to trigger Notch1 activation.

Kushagra Bansal and Kithiganahalli N. Balaji

The NICD immunohistochemistry image for WT-PBS (experiment 2) in Fig. 4B was inadvertently duplicated from the COX-2 IHC image for iNOS^{-/-}-MDP (experiment 1). The data shown in Fig. S2 (A–C) were derived from the same experiment, and the gel images for GAPDH in Fig. S2 (A–C) and for NOD2 in Fig. S2A contained undeclared splices. These errors have now been corrected and do not affect the results or conclusions of the work.

Fig. 4B



COX-2

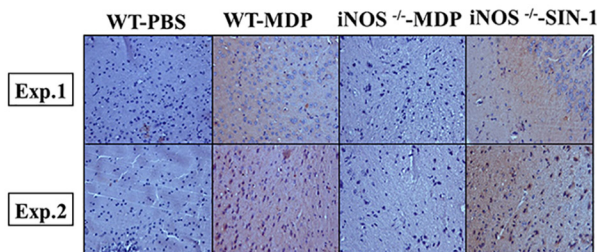


Fig. S2A

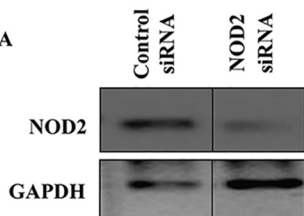


Fig. S2B

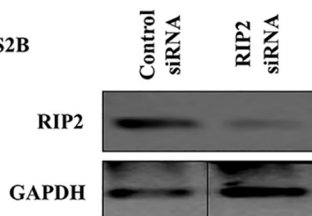


Fig. S2C

