



Involvement of Estrogen Receptor- α in the Activation of Nrf2-Antioxidative Signaling Pathways by Silibinin in Pancreatic β -Cells

Chun Chu^{1,†}, Xiang Gao^{2,†}, Xiang Li³, Xiaoying Zhang⁴, Ruixin Ma⁴, Ying Jia⁴, Dahong Li², Dongkai Wang^{1,*} and Fanxing Xu^{5,*}

¹Department of Pharmaceutics, School of Pharmacy, Shenyang Pharmaceutical University, Shenyang 110016,

²Department of Natural Products Chemistry, School of Traditional Chinese Materia Medica, Shenyang Pharmaceutical University, Shenyang 110016,

³Qiqihaer Middle School, Qiqihaer 161099,

⁴Department of Food Quality and Safety, Faculty of Functional Food and Wine, Shenyang Pharmaceutical University, Shenyang 110016,

⁵Wuya College of Innovation, Shenyang Pharmaceutical University, Shenyang 110016, China

Abstract

Silibinin exhibits antidiabetic potential by preserving the mass and function of pancreatic β -cells through up-regulation of estrogen receptor- α (ER α) expression. However, the underlying protective mechanism of silibinin in pancreatic β -cells is still unclear. In the current study, we sought to determine whether ER α acts as the target of silibinin for the modulation of antioxidative response in pancreatic β -cells under high glucose and high fat conditions. Our *in vivo* study revealed that a 4-week oral administration of silibinin (100 mg/kg/day) decreased fasting blood glucose with a concurrent increase in levels of serum insulin in high-fat diet/streptozotocin-induced type 2 diabetic rats. Moreover, expression of ER α , NF-E2-related factor 2 (Nrf2), and heme oxygenase-1 (HO-1) in pancreatic β -cells in pancreatic islets was increased by silibinin treatment. Accordingly, silibinin (10 μ M) elevated viability, insulin biosynthesis, and insulin secretion of high glucose/palmitate-treated INS-1 cells accompanied by increased expression of ER α , Nrf2, and HO-1 as well as decreased reactive oxygen species production *in vitro*. Treatment using an ER α antagonist (MPP) in INS-1 cells or silencing ER α expression in INS-1 and NIT-1 cells with siRNA abolished the protective effects of silibinin. Our study suggests that silibinin activates the Nrf2-antioxidative pathways in pancreatic β -cells through regulation of ER α expression.

Key Words: Diabetes mellitus, Silibinin, Pancreatic β -cell, Estrogen receptor- α , Antioxidative response

INTRODUCTION

Diabetes mellitus, diagnosed by observing elevated levels of blood glucose, is globally approaching epidemic proportions (Mackenbach *et al.*, 2018; Yang and Kang, 2018). Inadequate production of insulin caused by loss of pancreatic β -cell mass and function is central to the development of diabetes (Kawamori, 2017; Chu *et al.*, 2018). As the predominant form of diabetes, type 2 diabetes mellitus (T2DM) accounts for around 90% of diabetic patients globally (International Diabetes Federation, 2017). The dysregulation of glucose homeo-

stasis in T2DM is associated with body fat accumulation (Shulman, 2014). Increased intracellular reactive oxygen species (ROS) have been reported to be involved in glucose-induced glucotoxicity and fatty acid-induced lipotoxicity in insulin-producing pancreatic β -cells (Robertson, 2006; Lee *et al.*, 2013). The ROS produced could be scavenged by endogenous antioxidative enzymes such as heme oxygenase-1 (HO-1) and superoxide dismutase 2 (SOD2), while the imbalance between antioxidative defense and ROS production leads to oxidative stress. The transcription of HO-1 and SOD2 genes are regulated by the transcription factor NF-E2-related factor 2 (Nrf2),

Open Access <https://doi.org/10.4062/biomolther.2019.071>

This is an Open Access article distributed under the terms of the Creative Commons Attribution Non-Commercial License (<http://creativecommons.org/licenses/by-nc/4.0/>) which permits unrestricted non-commercial use, distribution, and reproduction in any medium, provided the original work is properly cited.

Received Apr 28, 2019 Revised Aug 18, 2019 Accepted Sep 4, 2019

Published Online Oct 25, 2019

*Corresponding Authors

E-mail: wangycsyphu@126.com (Wang D), fanxing0011@163.com (Xu F)

Tel: +86-24-43520529 (Wang D), +86-24-2398-6973 (Xu F)

Fax: +86-24-43520529 (Wang D), +86-24-2398-6973 (Xu F)

[†]The first two authors contributed equally to this work.

which acts as a master regulator of the protective response to oxidative stress (Rochette *et al.*, 2014; Gerber and Rutter, 2017; Khan *et al.*, 2017).

Polyphenols are widely distributed in plants and are commonly referred to as antioxidants (Morillas-Ruiz *et al.*, 2006). A variety of polyphenols such as curcumin, resveratrol, quercetin, epigallocatechin-3-gallate, caffeic acid, hydroxytyrosol, genistein, lycopene, and ellagic acid exert antioxidative activities through targeting Nrf2 and consequently activating the antioxidant response element-related cytoprotective genes (Nabavi *et al.*, 2016). Silibinin, a major polyphenolic compound extracted from milk thistle (*Silibum marianum*), has been widely used for the treatment of gallbladder and hepatic diseases via its antioxidative and hepatoprotective properties (Zou *et al.*, 2017). Further studies revealed that silibinin exerted strong antidiabetic effects by increasing the viability and improving the function of pancreatic β -cells (Wang *et al.*, 2012; Chen *et al.*, 2014). Silibinin was shown to increase the functional insulin-producing β -cell mass through the activation of estrogen receptor- α (ER α) in our recent study (Yang *et al.*, 2018). ROS production in pancreatic β -cells can be induced by hyperglycemia during the pathogenesis of type 2 diabetes, and the excessive concentrations of ROS cause pancreatic β -cell dysfunction and impair insulin action (Sone and Kagawa, 2005; Robertson, 2006). The activation of ER α has been shown to regulate the antioxidative response in breast cancer cells by activating Nrf2 (Wu *et al.*, 2014), but the relationship between ER α and Nrf2 in pancreatic β -cells is still unclear. In the current study, whether silibinin protects pancreatic β -cells against oxidative damage under high-glucose and high-fat conditions was determined, and the underlying mechanisms involving the regulation of ER α and the Nrf2-antioxidative pathway were explored.

MATERIALS AND METHODS

Chemicals and reagents

Silibinin (purity $\geq 99\%$) was purchased from Jurong Best Medicine Material (Zhenjiang, Jiangsu, China). Streptozotocin (STZ, purity $\geq 98\%$), Metformin (purity $\geq 98\%$), 3-(4,5-dimethyl-2-thiazolyl)-2, 5-diphenyltetrazolium bromide (MTT), ER α -specific agonist 1,3,5-tris (4-hydroxyphenyl)-4-propyl-1H-pyrazole (PPT), and ER α -specific antagonist 1,3-bis(4-hydroxyphenyl)-4-methyl-5-[4-(2-piperidinyloxy)phenol]-1H-pyrazole-dihydro-chloride (MPP) were obtained from Sigma-Aldrich (St. Louis, MO, USA). Mouse anti-insulin and rabbit anti-ER α primary antibodies as well as Rhodamine-, FITC-, and HRP- conjugated secondary antibodies were purchased from Proteintech Group (Chicago, IL, USA). Rabbit antibodies against Nrf2, HO-1, SOD2 and β -actin were obtained from Wanlei Life Science (Shenyang, China). Mouse anti-8-OHdG antibody was purchased from Santa Cruz Biotechnology (Santa Cruz, CA, USA). The enzyme-linked immunosorbent assay (ELISA) kit for detecting rat insulin was purchased from Shanghai Huayi Biological Technology (Shanghai, China). CMC-Na, palmitate, glucose, and DAPI-containing mounting media were provided by Meilun Biotech (Dalian, China).

Animals

Seven-week-old male specific pathogen free Sprague-Dawley (SD) rats were obtained from the Experimental Animal

Center of Shenyang Pharmaceutical University (Shenyang, China). Animal experiments were conducted in accordance with the Guideline of Animal Experimentation and the protocol was subject to approval by the Animal Ethics Committee of Shenyang Pharmaceutical University. All rats were housed under conventional conditions with appropriate temperature ($22 \pm 0.5^\circ\text{C}$), humidity (50-60%) control and a 12/12 h light/dark cycle with free access to food and water. T2DM was induced by feeding rats with high-fat diet (HFD, H10045; 4.73 kcal/g, 45 kcal% fat, 35 kcal% carbohydrates, and 20 kcal% protein; Beijing HFK Bioscience, Beijing, China) for 5 weeks followed by intraperitoneal (i.p.) injection of 35 mg/kg STZ. Rats were considered to be hyperglycemic when blood glucose levels were >11.1 mmol/L after a 1 week waiting period (Xu *et al.*, 2018). Silibinin (100 mg/kg) and metformin (100 mg/kg) suspensions prepared in 0.5% CMC-Na were administered to rats once daily by oral gavage for 4 consecutive weeks, and the untreated rats in diabetic control group were administered with 0.5% CMC-Na only ($n=6$ in each group). Fasting blood glucose was measured by glucose oxidase/peroxidase method (Wako Diagnostics, Tokyo, Japan) at the indicated time points. By the end of the study, overnight-fasted animals were anesthetized with intraperitoneal injection of chloral hydrate (350 mg kg^{-1}), and serum was collected for assessment of IL-1 β , TNF- α (Nanjing Jiancheng Bio engineering Institute, Nanjing, China) and insulin (Shanghai Huayi Biological Technology). Pancreas tissues were harvested and fixed with 4% paraformaldehyde for immunofluorescence analysis.

Immunofluorescence

Paraformaldehyde-fixed pancreas tissues were embedded with paraffin and sectioned into 4 μm slices. The sections were permeabilized with 0.15% Triton X-100, and then blocked with blocking buffer containing 5% normal goat serum before incubation with anti-insulin antibody and antibodies targeting ER α , Nrf2 or HO-1. The primary antibodies were located with FITC- or Rhodamine- conjugated secondary antibody. Slides were then mounted with DAPI-containing mounting medium, and the images were taken using a fluorescence microscope (Eclipse 90i; Nikon Instruments, Tokyo, Japan) at 200x magnification.

Cell culture

Rat pancreatic β -cell line INS-1 was obtained from National Platform of Experimental Cell Resources for Sci-Tech (Beijing, China), and the cells were cultured in RPMI 1640 medium (Gibco, Grand Island, NY, USA) containing 11.1 mmol/L glucose supplemented with 10% FBS, 10 mmol/L HEPES, 2 mmol/L L-glutamine, 1 mmol/L sodium pyruvate, 100 U/mL penicillin G sodium, 100 $\mu\text{g}/\text{mL}$ streptomycin sulfate, and 50 $\mu\text{mol}/\text{L}$ β -mercaptoethanol. Mouse pancreatic β -cell line NIT-1 was obtained from Newgainbio (Wuxi, China), the cells were grown in Dulbecco's modified Eagle's medium (DMEM) containing 11.1 mmol/L glucose supplemented with 10% FBS, 100 U/mL penicillin G sodium, and 100 $\mu\text{g}/\text{mL}$ streptomycin sulfate. The stock solution of palmitate (5 mM) bound to 3.75% bovine serum albumin (BSA) was prepared by following the published protocol (Lee *et al.*, 2013), and the stock solution was diluted in culture medium to obtain 0.4 mM palmitate conjugated with 0.3% BSA. Glucolipototoxicity-mediated cell damage was induced by incubating INS-1 or NIT-1 cells with high glucose (HG, 25 mM) and 0.4 mM palmitate/BSA (PA) for 24

h. To determine the protective effects of silibinin against glucolipotoxicity through the regulation of ER α expression, cells were pre-incubated with silibinin (2.5, 5, and 10 μ M), PPT (10 μ M) or MPP (15 μ M) for 2 h before incubation with HG/PA. Moreover, small interfering RNA (siRNA) against ER α and control scrambled siRNA were transfected into INS-1 or NIT-1 cells with siRNA-Mate (Shanghai Gene Pharma, Shanghai, China) to confirm the study using ER α antagonist, and the pre-incubation of cells with silibinin was then performed 24 h after transfection. Insulin in cells and conditioned medium was determined using the commercial ELISA kit (Shanghai Huayi Biological Technology, Shanghai, China). The cells were incubated at 37°C with 5% CO₂ in a humidified atmosphere during the study.

MTT assay

INS-1 cells were plated into 96-well cell culture plates (Corstar, Corning, NY, USA) at a density of 1.0 \times 10⁴ cells/well. After cultured for 24 h, the cells were subjected to the indicated treatments followed by incubation with 100 μ L of 0.5 mg/mL MTT solution at 37°C for additional 3 h. The formazan dye product of residual cell layer was dissolved with 150 μ L of

DMSO. The absorbance of each sample was measured at 490 nm wavelength using a microplate reader (SpectraMax M2, Molecular Devices, Sunnyvale, CA, USA). Data were expressed as the cell viability versus that of control.

Western blot assay

INS-1 or NIT-1 cells were lysed in RIPA buffer containing phosphatase inhibitors and protease inhibitors (Roche Diagnostics, Indianapolis, IN, USA). The soluble protein was isolated by centrifugation at 12,000 g for 10 min. Equal amounts of total protein of each sample were separated by sodium dodecyl sulfate-polyacrylamide gel electrophoresis (SDS-PAGE), and transferred to PVDF membrane. After blocking with 5% skimmed milk in PBS containing 0.1% Tween-20, the membranes were blotted with primary antibody against ER α , Nrf2, HO-1, SOD2 or β -actin. The primary antibodies were then located with HRP-conjugated secondary antibody, and the protein bands were finally visualized by using ECL kit (Amersham, Buckinghamshire, UK). The band density was analyzed using Image J software (National Institutes of Health, Bethesda, MD, USA).

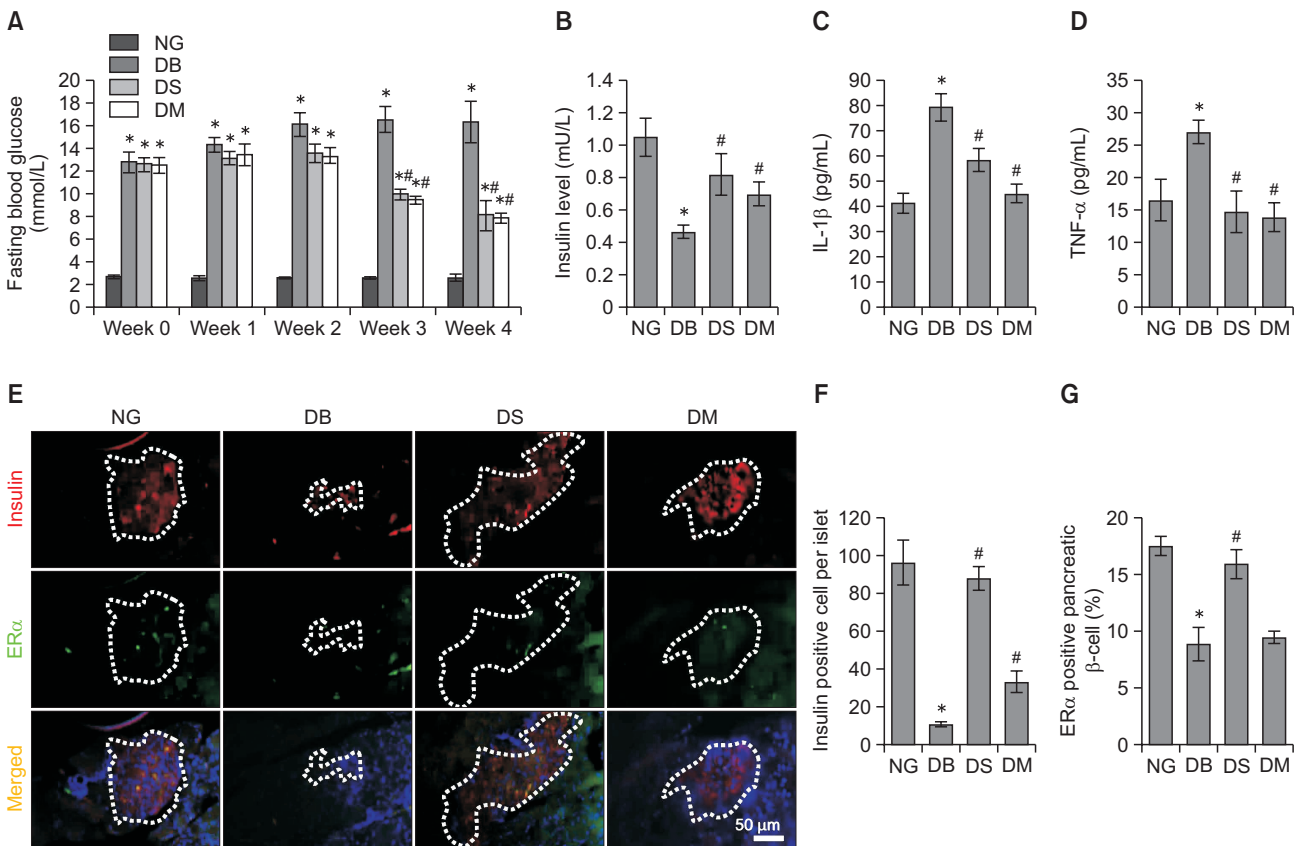


Fig. 1. Effects of silibinin on fasting blood glucose, serum insulin and pro-inflammatory cytokines as well as expression of ER α in pancreatic β -cells in type 2 diabetic SD rats. (A) Fasting blood glucose of SD rats in different groups was monitored during the study. (B) Rats were euthanized after 4 weeks of silibinin or metformin administration, and the serum was collected to evaluate the insulin secretion of rats with different treatments. (C, D) Levels of IL-1 β and TNF- α in serum of rats from different groups were determined. (E) Representative immunofluorescence images showed insulin- and ER α -positive cells in pancreatic islet of normoglycemic and diabetic SD rats with different treatments (magnification, \times 200; scale bar, 50 μ m). (F, G) Quantification of the insulin-positive cell number and ER α -positive pancreatic β -cell percentage in islets. NG, normoglycemia; DB, diabetes; DS, diabetes+silibinin; DM, diabetes+metformin. Data are mean \pm SEM (n=6 in each group). **p*<0.05 vs. NG group; #*p*<0.05 vs. DB group.

ROS production

Intracellular ROS of INS-1 or NIT-1 cells was detected by a fluorescent probe 2',7'-dichlorofluorescein diacetate (DCFH-DA) (Meilun Biotech). DCFH-DA is converted by intracellular esterases, which is oxidized into the highly fluorescent dichlorofluorescein (DCF) in the presence of oxidants. The fluorescence was measured by using the microplate reader (SpectraMax M2, Molecular Devices) with excitation at 485 nm and emission at 530 nm.

Statistics

In experiments with multiple treatments, the statistical comparisons were analyzed by ANOVA with Tukey's test. Results were presented as the mean \pm SEM. $p < 0.05$ was considered statistically significant.

RESULTS

Silibinin decreases blood glucose and increases serum insulin of diabetic rats

Fasting blood glucose in HFD/STZ-induced type 2 diabetic Sprague-Dawley (SD) rats was significantly higher than in normoglycemic control rats. However, silibinin (100 mg/kg) and the positive control metformin (100 mg/kg) significantly decreased the fasting blood glucose of diabetic rats 3 weeks after oral administration ($p < 0.05$) (Fig. 1A). Insulin secretion was impaired in diabetic SD rats as evidenced by the lower insulin level in diabetic rats compared with normoglycemic rats ($p < 0.05$), while the administration of silibinin or metformin significantly reversed insulin secretion ($p < 0.05$) (Fig. 1B). Since TNF- α and IL-1 β are the crucial mediators leading to β -cell destruction (Yang *et al.*, 2018), we further measured the level of TNF- α and IL-1 β in serum of rats from different groups. Diabetic rats showed higher levels of TNF- α and IL-1 β relative to normoglycemic rats, and these levels were significantly attenuated by silibinin or metformin administration ($p < 0.05$) (Fig 1C, 1D).

Silibinin elevates the expression of ER α in pancreatic β -cells of diabetic rats

The pancreatic β -cells in pancreatic islets were located by immunofluorescence using anti-insulin antibody (Fig. 1E). Consistent with the data shown in Fig. 1B, the quantitative result of insulin immunofluorescence revealed that the number of pancreatic β -cells in pancreatic islets of diabetic rats decreased significantly compared with the normoglycemic control group ($p < 0.05$), while the administration of silibinin or metformin increased the number of pancreatic β -cells in diabetic rats ($p < 0.05$) (Fig. 1F). The expression of ER α in pancreatic β -cells was shown by colocalization of ER α and insulin (Fig. 1E). ER α -positive pancreatic β -cell percentages in diabetic pancreatic islets were lower than in the normoglycemic control group ($p < 0.05$), while silibinin ($p < 0.05$) rather than metformin ($p > 0.05$) significantly increased the expression of ER α in pancreatic β -cells (Fig. 1G).

Silibinin increases the expression of Nrf2 and HO-1 in pancreatic β -cells of diabetic rats

To determine whether the antioxidative activity of silibinin contributed to the protective effects in pancreatic β -cells, the expression of 8-OHdG, a marker of oxidative stress to DNA,

was determined by double immunofluorescence labeling of insulin and 8-OHdG. As shown in Fig. 2A and 2B, the percentage of 8-OHdG-positive pancreatic β -cells in diabetic control rats was significantly higher than in the normoglycemic control group. However, the administration of silibinin or metformin in diabetic rats decreased 8-OHdG-positive cell percentages. In addition, the expression of oxidative sensor Nrf2 and its downstream factor HO-1 was also evaluated by double immunofluorescence with antibodies targeting insulin and Nrf2/HO-1. The results showed that the expression of Nrf2 decreased significantly in pancreatic β -cells of diabetic rats, while silibinin caused a 3.30-fold increase of Nrf2 expression ($p < 0.05$). Metformin also increased the level of Nrf2 by 2.66-fold ($p < 0.05$) (Fig. 2C, 2D). Accordingly, silibinin and metformin significantly increased the expression of the antioxidative enzyme HO-1 by 5.04- and 2.19-fold, respectively ($p < 0.05$) (Fig. 2E, 2F).

Silibinin increases viability and insulin synthesis and secretion of rat pancreatic INS-1 cells in an ER α -dependent manner

To investigate whether silibinin exerts antioxidative effects through regulation of ER α expression, the rat pancreatic β -cell line INS-1 was used in the *in vitro* study. HG/PA-induced glucolipotoxicity markedly reduced INS-1 cell viability, while preincubation with silibinin (5 or 10 μ M) resulted in a significant increase of cell viability ($p < 0.05$). In addition, 10 μ M silibinin alone did not reduce the viability of INS-1 cells ($p > 0.05$) (Fig. 3A). PPT and MPP were used as ER α -selective agonist and antagonist, respectively. Treatment with PPT further increased the viability of INS-1 cells induced by silibinin ($p < 0.05$), while treatment with MPP significantly reduced cell viability ($p < 0.05$) (Fig. 3B). The impact of ER α expression on insulin synthesis and secretion of INS-1 cells was further determined. In accordance with the *in vivo* results (Fig. 1B, 1F), silibinin significantly increased the insulin level in INS-1 cells and its culture medium ($p < 0.05$), which was attenuated by cotreatment with MPP ($p < 0.05$) (Fig. 3C, 3D). In addition, PPT augmented the level of insulin secretion induced by silibinin ($p < 0.05$) (Fig. 3D). To confirm results using an ER α antagonist, ER α siRNA was transfected into INS-1 cells. ER α protein expression was shown to be effectively suppressed by ER α siRNA transfection (Fig. 3E). ER α siRNA transfection significantly attenuated silibinin-elevated cell viability and levels of intracellular and secreted insulin of INS-1 cells cultured with HG/PA ($p < 0.05$), while the control siRNA failed to exert these effects (Fig. 3F-3H). Taken together, silibinin, through the regulation of ER α , protected INS-1 cells against cytotoxicity and tackled dysfunction induced by the effects of HG/PA.

Silibinin decreases ROS production via the ER α /Nrf2/HO-1-SOD2 pathway in INS-1 and NIT-1 cells

As shown by the results of Western blot assay, silibinin (10 μ M) up-regulated HG/PA-decreased ER α expression in INS-1 cells ($p < 0.05$). Moreover, silibinin alone also significantly increased ER α expression compared with the control group ($p < 0.05$) (Fig. 4A). The effects of silibinin on the expression of Nrf2 and HO-1 in INS-1 cells were further evaluated. As shown in Fig. 4B, the cells treated with HG/PA showed decreased expression of Nrf2 and HO-1 ($p < 0.05$), while silibinin increased the expression of these proteins. To examine whether silibinin activated the Nrf2/HO-1 pathway through the regulation of ER α , PPT or MPP were added to the culture

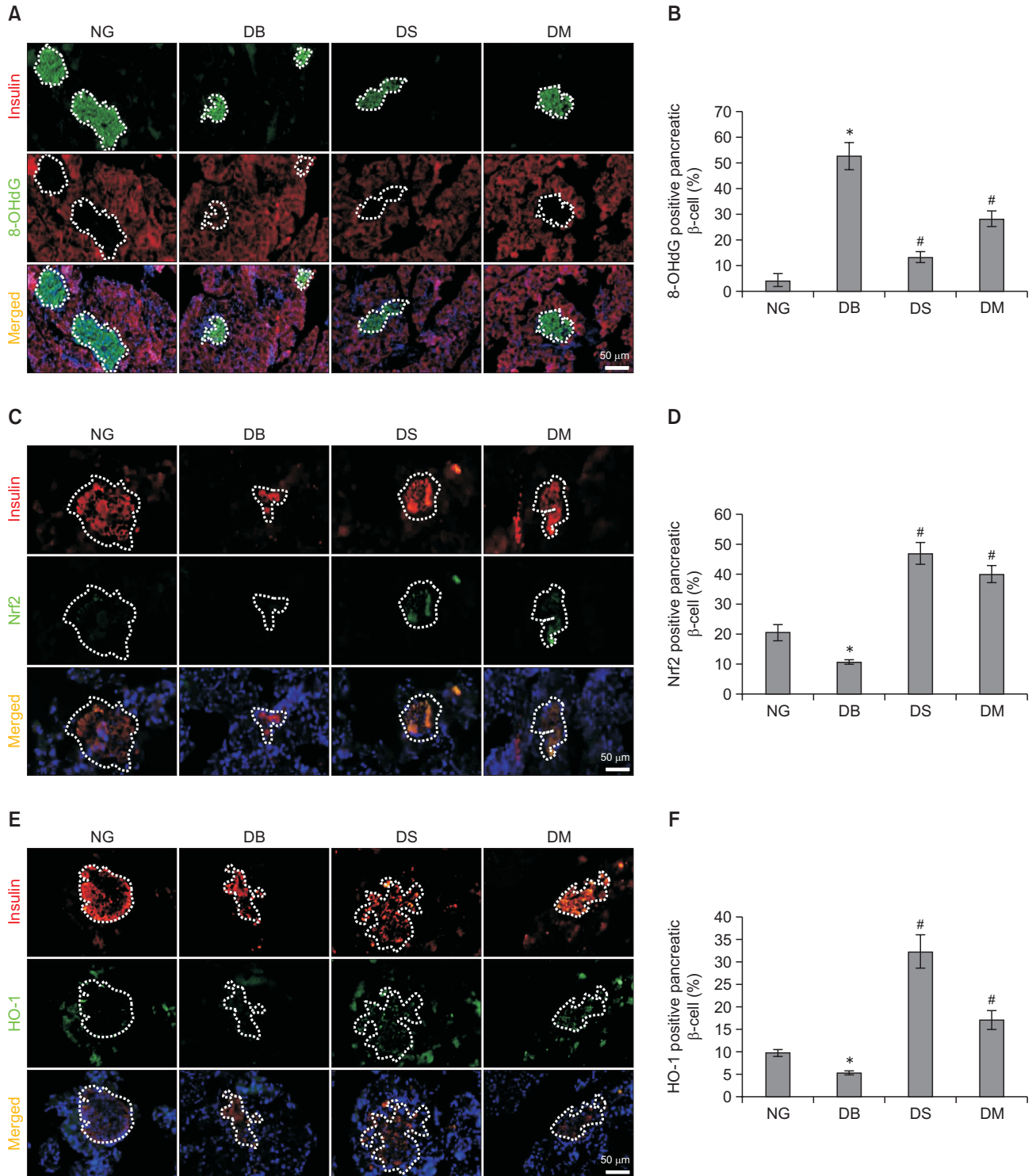


Fig. 2. Silibinin treatment up-regulates the expression of Nrf2 and HO-1 in pancreatic β -cells of diabetic rats. (A, B) Representative images of immunofluorescence labeling of insulin and 8-OHdG, and quantitative results of 8-OHdG-positive pancreatic β -cell percentage in islets. (C, D) Representative images of insulin/Nrf2 double immunofluorescence staining and quantitative analysis of Nrf2-positive pancreatic β -cell percentage in islets. (E, F) Representative images and the quantitative results of insulin/HO-1 double immunofluorescence staining. Magnification, $\times 200$; scale bar, 50 μ m. NG, normoglycemia; DB, diabetes; DS, diabetes+silibinin; DM, diabetes+metformin. Data are mean \pm SEM (n=6 in each group). * $p < 0.05$ vs. NG group; # $p < 0.05$ vs. DB group.

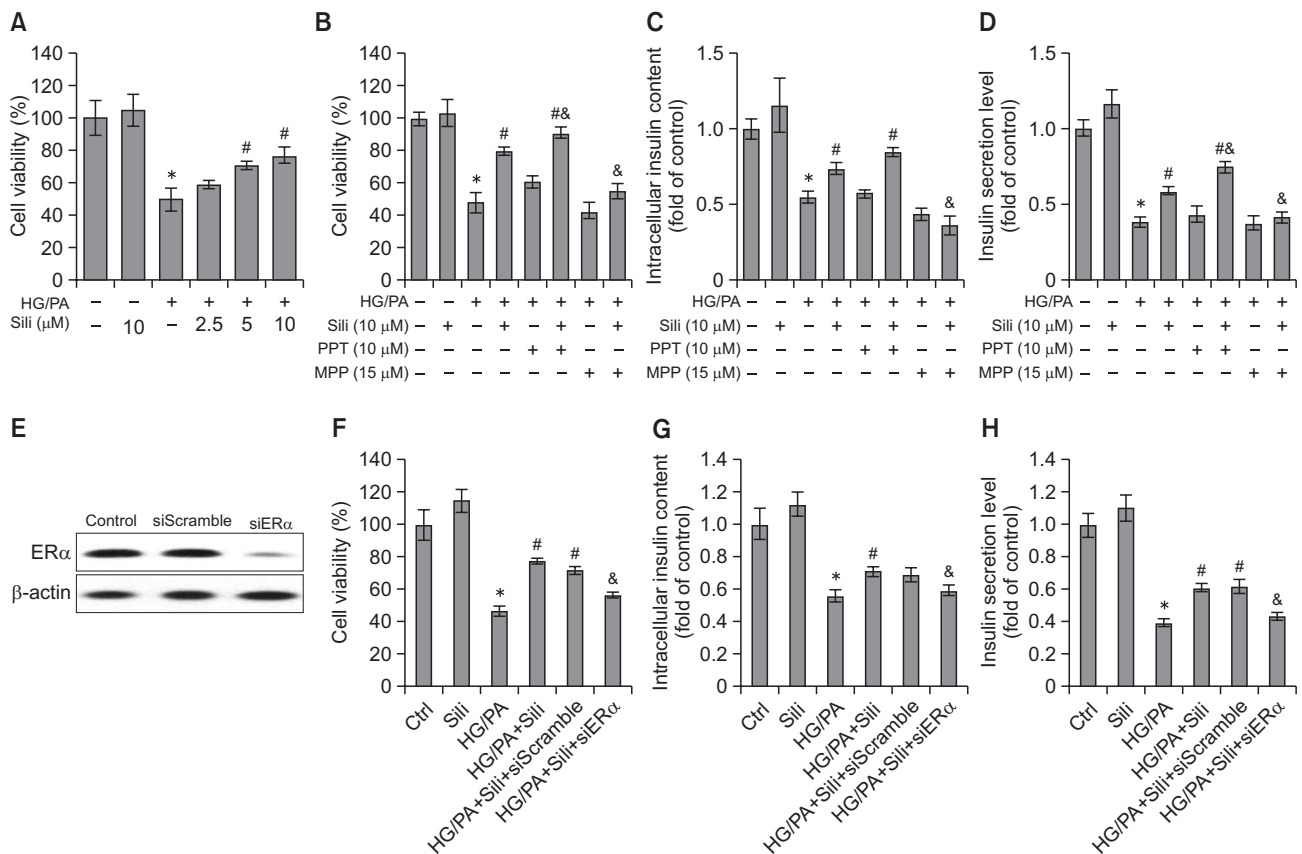


Fig. 3. Effects of silibinin on the viability and insulin secretion of INS-1 cells. (A) The effects of silibinin on the viability of INS-1 cells treated with HG/PA were determined by MTT assay. (B) The impacts of ER α selective agonist PPT and antagonist MPP on silibinin-enhanced INS-1 cell viability were determined by MTT assay. (C, D) Insulin in cells and medium was evaluated by ELISA assay. (E) INS-1 cells were transfected with ER α siRNA or control siRNA, and ER α protein expression was examined by Western blot assay 48 h after transfection. The cell viability (F) as well as intracellular (G) and secreted (H) insulin levels of cells with administration of silibinin and/or siRNA transfection were further evaluated. Serum albumin (0.3% BSA) was present under all conditions. HG/PA, high glucose and palmitate/BSA; Sili, silibinin. Data are mean \pm SEM of 3 independent experiments. * p <0.05 vs. control group; # p <0.05 vs. HG/PA group; & p <0.05 vs. HG/PA+Sili group.

medium of INS-1 cells with silibinin. Cells cotreated with ER α agonist PPT and silibinin had significantly increased Nrf2 and HO-1 expression compared with the cells treated with silibinin alone (p <0.05), while silibinin-enhanced HO-1 expression was attenuated when cells were cultured with the ER α antagonist MPP (p <0.05). Moreover, ROS produced in INS-1 cells was detected by a DCFH-DA probe (Fig. 4C). HG/PA increased the level of ROS in INS-1 cells compared with the control group (p <0.05), while pre-incubation with silibinin significantly decreased ROS production (p <0.05). In addition, PPT further down-regulated silibinin-inhibited ROS production (p <0.05), and silibinin failed to exert antioxidative effects in the cells cotreated with MPP (p <0.05). To validate the involvement of ER α in the activation of the Nrf2-antioxidative signaling pathways in pancreatic β -cells, a loss-of-function study using ER α siRNA was performed in the rat pancreatic β -cell line INS-1 and a mouse pancreatic β -cell line NIT-1. Consistent with the results in Fig. 4A, silibinin (10 μ M) up-regulated HG/PA-decreased ER α expression in NIT-1 cells (p <0.05) (Supplementary Fig. 1A). And ER α siRNA was shown to attenuate silibinin-increased Nrf2 and HO-1 expression in both INS-1 and NIT-1 cells cultured with HG/PA (p <0.05). In addition, the expression of SOD2, another antioxidative protein under the regulation

of Nrf2, was also increased by silibinin administration in both cell lines, while ER α siRNA effectively attenuated silibinin-enhanced SOD2 expression (Fig. 4D, Supplementary Fig. 1B, 1C). Moreover, ER α siRNA up-regulated silibinin-decreased ROS production from both INS-1 and NIT-1 cells cultured with HG/PA (Fig. 4E, Supplementary Fig. 1D). These results indicated an inhibitory effect of silibinin on ROS production by activating ER α -dependent Nrf2-antioxidative signaling pathways.

DISCUSSION

According to ethnobotanical information, approximately 800 plants are used in the folk medicine to treat diabetes (Hung *et al.*, 2012). However, only *Aegle marmelos*, *Allium cepa*, *Gymnema sylvestri*, *Momordica charantia*, *Ocimum sanctum*, *Nigella sativa*, *Ocimum sanctum*, *Panax quinquefolius*, *Salacia reticulata*, *Trigonella foenum-graecum*, and *Silybum marianum* showed antidiabetic effects in clinical studies (Ghorbani, 2013; Saad *et al.*, 2017). *Silybum marianum* grows all through Europe and North America, South America, China, India, Africa, and Australia (Corchete, 2008; Voroneanu *et al.*, 2016). Silibinin, a natural polyphenolic flavonoid, is a major bioac-

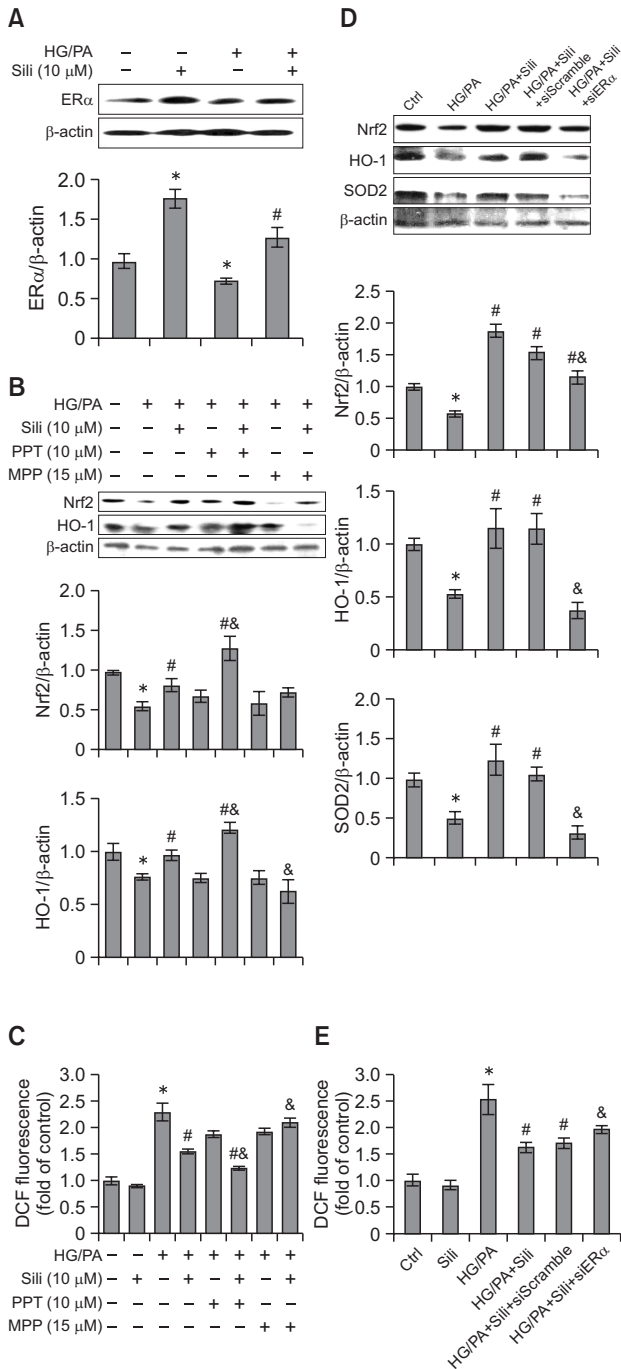


Fig. 4. Silibinin increases the expression of Nrf2, HO-1 and SOD2, and decreases ROS production in an ER α -dependent manner in INS-1 cells. INS-1 cells received indicated treatments, and the expression of ER α (A), Nrf2 and HO-1 (B) was examined by Western blot assay. (C) DCFH-DA probe was used to evaluate ROS production in INS-1 cells, and the fluorescence of oxidation product DCF was measured using a microplate reader with excitation at 485 nm and emission at 530 nm. (D, E) INS-1 cells were transfected with ER α siRNA or control siRNA, and then the expression of Nrf2, HO-1, and SOD2 as well as ROS production of cells with administration of silibinin and/or siRNA transfection were examined. Serum albumin (0.3% BSA) was present under all conditions. HG/PA, high glucose and palmitate/BSA; Sili, silibinin. Data are mean \pm SEM of 3 independent experiments. * p <0.05 vs. control group; # p <0.05 vs. HG/PA group; & p <0.05 vs. HG/PA+Sili group.

active component in the fruits and seeds of *Silybum marianum* (Jeong *et al.*, 2011). In our previous study, silibinin increased the viability and insulin synthesis of pancreatic β -cells (INS-1 cells) through up-regulation of ER α (Yang *et al.*, 2018). Our current study further revealed that the ER α -activated Nrf2-antioxidative signaling pathways are involved in the protective effects of silibinin in pancreatic β -cells.

Persistent hyperglycemia and elevated levels of free fatty acids contribute to the oxidative stress in pancreatic β -cells (Govindaraj and Sorimuthu, 2015). In the present *in vivo* study, the HFD/STZ-induced rat model of T2DM was used to evaluate the protective effects of silibinin against oxidative damage in pancreatic β -cells. Metformin, the most prescribed agent for T2DM worldwide (Tahrani *et al.*, 2016), was used as the positive control in our study. Metformin could restore glucose homeostasis by activating glucose uptake in muscle and liver, suppressing hepatic glucose output, and preserving pancreatic β -cell function (Giannarelli *et al.*, 2003). Our results showed that silibinin (100 mg/kg) down-regulated blood glucose and decreased levels of pro-inflammatory cytokines TNF- α and IL-1 β similar to those in rats receiving the same dose of metformin treatment. Notably, as evidenced by higher levels of insulin-positive pancreatic β -cells per islet in diabetic animals, silibinin exerted stronger protective effect on pancreatic β -cell than did metformin. In addition, rat INS-1 pancreatic β -cells were treated with HG/PA to induce glucolipotoxicity-mediated cell damage *in vitro*. Accordant with the results of the *in vivo* study, the preincubation of silibinin (10 μ M) protected INS-1 cells against HG/PA-induced injury as evidenced by elevated cell viability and insulin synthesis and secretion.

It has been reported that the activation of ER α enhanced insulin synthesis in pancreatic β -cells (Alonsomagdalena *et al.*, 2008; Tiano and Mauvais-Jarvis, 2012). The role of ER α in the protective effects of silibinin in pancreatic β -cells was determined in the current study. We calculated the percentage of ER α -positive pancreatic β -cells in rat islets, and the data indicated that silibinin increased ER α expression in pancreatic β -cells of diabetic rats. In addition, HG/PA treatment decreased ER α expression in the rat INS-1 cell line and a mouse NIT-1 cell line, while the pre-incubation of silibinin up-regulated the expression of ER α in HG/PA-treated cells. Both *in vivo* and *in vitro* studies have revealed increased expression of ER α induced by silibinin. Additional research has determined the role of ER α in the protective effects of silibinin in INS-1 cells occurs via activating or inactivating ER α by PPT (agonist) and MPP (antagonist), respectively (Hidalgo-Lanusca *et al.*, 2018). PPT was shown to enhance silibinin-improved INS-1 cell survival and insulin secretion, while MPP negated the beneficial effects of silibinin. To validate the study using an ER α antagonist, ER α siRNA was transfected into INS-1 cells. The loss-of-function study confirmed that silibinin exerts protective effects in INS-1 cells by increasing cell viability and insulin synthesis and secretion in an ER α -dependent manner. Consistent with our previous study (Yang *et al.*, 2018), these results indicated that silibinin could regulate glucose homeostasis, at least partly, by preserving pancreatic β -cell mass and function through up-regulation of ER α . However, silibinin was reported to decrease the expression of ER α and finally induced autophagy and apoptosis in human breast cancer MCF-7 cells (Zheng *et al.*, 2015). These contradictory results indicated that ER α might be differently regulated by silibinin in different cell types.

Nrf2-mediated antioxidative response plays an important

role in protecting pancreatic β -cells against oxidative stress-induced impairment (Pi *et al.*, 2010). It has been reported that ER α antagonist MPP blocked estrogen-induced Nrf2 activity in MCF-7 breast cancer cells, while the inhibition of ER β , another classic ER, failed to reverse the activation of Nrf2 by estrogen (Wu *et al.*, 2014). Conversely, the abrogation of ER β attenuated the induction of Nrf2 activation by S-(-)-equol, a metabolic product of phytoestrogen daidzein, but modulation of ER α had no effects on Nrf2 in human umbilical vein endothelial cells (Zhang *et al.*, 2013). The relationship between ER and Nrf2 in pancreatic β -cells is still unclear. Our study revealed that the expression of Nrf2 and its downstream effector HO-1 was increased by silibinin in pancreatic β -cells of diabetic rats accompanied by up-regulated expression of ER α . However, metformin regulated the expression Nrf2 and HO-1 without affecting ER α expression, indicating that metformin might exert antioxidative activity through ER α -independent signaling pathways. In the *in vitro* study, treatment of INS-1 cells with the ER α agonist PPT enhanced silibinin-induced activation of the Nrf2/HO-1 pathway and inhibited the production of ROS, while the ER α antagonist MPP negated the effectiveness of silibinin. Accordingly, ER α siRNA transfection was shown to abolish silibinin-increased Nrf2, HO-1, and SOD2 expression, and up-regulate silibinin-decreased ROS production in both INS-1 and NIT-1 cells cultured with HG/PA. In our previous study, silibinin was shown to attenuate TNF α - or IL-1 β -impaired PI3K/Akt pathway (Yang *et al.*, 2018). ER-mediated PI3K/Akt activation is a well-documented pathway involved in protection against oxidative stress, and the inactivation of the PI3K/Akt pathway was reported to attenuate phytoestrogen Rb1-induced activation of Nrf2/HO-1 pathway (Hwang and Jeong, 2010). Thus, under the regulation of ER, the PI3K/Akt pathway might be involved in the antioxidative action of silibinin.

In summary, silibinin up-regulated the viability and improved the function of β -cells in pancreatic islets of type 2 diabetic rats and HG/PA-treated β -cells *in vitro*. The protective effects of silibinin in pancreatic β -cells were established through the regulation of oxidative stress by activating ER α -dependent Nrf2-antioxidative signaling pathways. These findings suggest that silibinin may represent a potential therapeutic agent to improve glucose homeostasis in patients with diabetes. In addition, although ER α contributes to the maintenance of glucose homeostasis by increasing insulin synthesis in pancreatic β -cells, adverse effects such as insulin resistance might be caused if estrogenic action is not within physiological levels (Nadal *et al.*, 2009). Therefore, further investigation of the safety of silibinin in diabetes control is necessary.

CONFLICT OF INTEREST

The authors declare no conflict of interest.

ACKNOWLEDGMENTS

This work was funded by National Natural Science Foundation of China (81803603), China Postdoctoral Science Foundation (2017M621161; 2018T110462), Jiangsu Province "Innovative Entrepreneurship" Program, and Doctoral Starting-up Foundation of Liaoning Science and Technology

Department (201601139).

REFERENCES

- Alonsomagdalena, P., Ropero, A. B., Carrera, M. P., Cederroth, C. R., Baquié, M., Gauthier, B. R., Nef, S., Stefani, E. and Nadal, A. (2008) Pancreatic insulin content regulation by the estrogen receptor ER α . *PLoS ONE* **3**, e2069.
- Chen, K., Zhao, L., He, H., Wan, X., Wang, F. and Mo, Z. (2014) Silibinin protects beta cells from glucotoxicity through regulation of the insig-1/srebp-1c pathway. *Int. J. Mol. Med.* **34**, 1073-1080.
- Chu, C., Li, D., Zhang, S., Ikejima, T., Jia, Y., Wang, D. and Xu, F. (2018) Role of silibinin in the management of diabetes mellitus and its complications. *Arch. Pharm. Res.* **41**, 785-796.
- Corchete, P. (2008) *Silybum marianum* (L.) Gaertn: the source of silymarin. In *Bioactive Molecules and Medicinal Plants*, pp. 123-148. Springer.
- Gerber, P. A. and Rutter, G. A. (2017) The role of oxidative stress and hypoxia in pancreatic beta-cell dysfunction in diabetes mellitus. *Antioxid. Redox. Signal.* **26**, 501-518.
- Ghorbani, A. (2013) Best herbs for managing diabetes: a review of clinical studies. *Braz. J. Pharm. Sci.* **49**, 413-422.
- Giannarelli, R., Aragona, M., Coppelli, A. and Del Prato, S. (2003) Reducing insulin resistance with metformin: the evidence today. *Diabetes Metab.* **29**, 6S28-6S35.
- Govindaraj, J. and Sorimuthu Pillai, S. (2015) Rosmarinic acid modulates the antioxidant status and protects pancreatic tissues from glucolipotoxicity mediated oxidative stress in high-fat diet: Streptozotocin-induced diabetic rats. *Mol. Cell. Biochem.* **404**, 143-159.
- Hidalgo-Lanussa, O., Avila-Rodriguez, M., Baez-Jurado, E., Zamudio, J., Echeverria, V., Garcia-Segura, L. M. and Barreto, G. E. (2018) Tibolone reduces oxidative damage and inflammation in microglia stimulated with palmitic acid through mechanisms involving estrogen receptor beta. *Mol. Neurobiol.* **55**, 5462-5477.
- Hung, H.-Y., Qian, K., Morris-Natschke, S. L., Hsu, C.-S. and Lee, K.-H. (2012) Recent discovery of plant-derived anti-diabetic natural products. *Nat. Prod. Rep.* **29**, 580-606.
- Hwang, Y. P. and Jeong, H. G. (2010) Ginsenoside Rb1 protects against 6-hydroxydopamine-induced oxidative stress by increasing heme oxygenase-1 expression through an estrogen receptor-related PI3K/Akt/Nrf2-dependent pathway in human dopaminergic cells. *Toxicol. Appl. Pharm.* **242**, 18-28.
- International Diabetes Federation (2017) *IDF Diabetes Atlas* (8th ed). IDF, Brussels.
- Jeong, J. C., Shin, W. Y., Kim, T. H., Kwon, C. H., Kim, J. H., Kim, Y. K. and Kim, K. H. (2011) Silibinin induces apoptosis via calpain-dependent aif nuclear translocation in U87MG human glioma cell death. *J. Exp. Clin. Cancer Res.* **30**, 44.
- Kawamori, D. (2017) Exploring the molecular mechanisms underlying α - and β -cell dysfunction in diabetes. *Diabetol. Int.* **8**, 248-256.
- Khan, N. M., Haseeb, A., Ansari, M. Y., Devarapalli, P., Haynie, S. and Haqqi, T. M. (2017) Wogonin, a plant derived small molecule, exerts potent anti-inflammatory and chondroprotective effects through the activation of ROS/ERK/Nrf2 signaling pathways in human osteoarthritis chondrocytes. *Free Radic. Biol. Med.* **106**, 288-301.
- Lee, S. J., Choi, S. E., Jung, I. R., Lee, K. W. and Kang, Y. (2013) Protective effect of nicotinamide on high glucose/palmitate-induced glucolipotoxicity to INS-1 beta cells is attributed to its inhibitory activity to sirtuins. *Arch. Biochem. Biophys.* **535**, 187-196.
- Mackenbach, J. D., den Braver, N. R. and Beulens, J. W. J. (2018) Spouses, social networks and other upstream determinants of type 2 diabetes mellitus. *Diabetologia* **61**, 1517-1521.
- Morillas-Ruiz, J. M., Garcia, J. A. V., López, F. J., Vidal-Guevara, M. L. and Zafrilla, P. (2006) Effects of polyphenolic antioxidants on exercise-induced oxidative stress. *Clin. Nutr.* **25**, 444-453.
- Nabavi, S. F., Barber, A. J., Spagnuolo, C., Russo, G. L., Daglia, M., Nabavi, S. M. and Sobarzo-Sanchez, E. (2016) Nrf2 as molecular target for polyphenols: a novel therapeutic strategy in diabetic retinopathy. *Crit. Rev. Clin. Lab. Sci.* **53**, 293-312.
- Nadal, A., Alonso-Magdalena, P., Soriano, S., Quesada, I. and Ropero, A. B. (2009) The pancreatic β -cell as a target of estrogens and

- xenoestrogens: implications for blood glucose homeostasis and diabetes. *Mol. Cell. Endocrinol.* **304**, 63-68.
- Pi, J., Zhang, Q., Fu, J., Woods, C. G., Hou, Y., Corkey, B. E., Collins, S. and Andersen, M. E. (2010) ROS signaling, oxidative stress and Nrf2 in pancreatic beta-cell function. *Toxicol. Appl. Pharmacol.* **244**, 77-83.
- Robertson, R. (2006) Oxidative stress and impaired insulin secretion in type 2 diabetes. *Curr. Opin. Pharmacol.* **6**, 615-619.
- Rochette, L., Zeller, M., Cottin, Y. and Vergely, C. (2014) Diabetes, oxidative stress and therapeutic strategies. *Biochim. Biophys. Acta* **1840**, 2709-2729.
- Saad, B., Zaid, H., Shanak, S. and Kadan, S. (2017) Anti-Diabetes and Anti-Obesity Medicinal Plants and Phytochemicals. Springer International Publishing.
- Shulman, G. I. (2014) Ectopic fat in insulin resistance, dyslipidemia, and cardiometabolic disease. *N. Engl. J. Med.* **371**, 1131-1141.
- Sone, H. and Kagawa, Y. (2005) Pancreatic beta cell senescence contributes to the pathogenesis of type 2 diabetes in high-fat diet-induced diabetic mice. *Diabetologia* **48**, 58-67.
- Tahrani, A. A., Barnett, A. H. and Bailey, C. J. (2016) Pharmacology and therapeutic implications of current drugs for type 2 diabetes mellitus. *Nat. Rev. Endocrinol.* **12**, 566-592.
- Tiano, J. P. and Mauvais-Jarvis, F. (2012) Importance of oestrogen receptors to preserve functional β -cell mass in diabetes. *Nat. Rev. Endocrinol.* **8**, 342-351.
- Voroneanu, L., Nistor, I., Dumea, R., Apetrii, M. and Covic, A. (2016) Silymarin in type 2 diabetes mellitus: a systematic review and meta-analysis of randomized controlled trials. *J. Diabetes Res.* **2016**, 5147468.
- Wang, Q., Liu, M., Liu, W. W., Hao, W. B., Tashiro, S., Onodera, S. and Ikejima, T. (2012) In vivo recovery effect of silibinin treatment on streptozotocin-induced diabetic mice is associated with the modulations of sirt-1 expression and autophagy in pancreatic beta-cell. *J. Asian Nat. Prod. Res.* **14**, 413-423.
- Wu, J., Williams, D., Walter, G. A., Thompson, W. E. and Sidell, N. (2014) Estrogen increases Nrf2 activity through activation of the PI3K pathway in MCF-7 breast cancer cells. *Exp. Cell Res.* **328**, 351-360.
- Xu, F., Yang, J., Negishi, H., Sun, Y., Li, D., Zhang, X., Hayashi, T., Gao, M., Ikeda, K. and Ikejima, T. (2018) Silibinin decreases hepatic glucose production through the activation of gut-brain-liver axis in diabetic rats. *Food Funct.* **9**, 4926-4935.
- Yang, D. K. and Kang, H. S. (2018) Anti-diabetic effect of cotreatment with quercetin and resveratrol in streptozotocin-induced diabetic rats. *Biomol. Ther. (Seoul)* **26**, 130-138.
- Yang, J., Sun, Y., Xu, F., Liu, W., Hayashi, T., Onodera, S., Tashiro, S. I. and Ikejima, T. (2018) Involvement of estrogen receptors in silibinin protection of pancreatic β -cells from TNF α - or IL-1 β -induced cytotoxicity. *Biomed. Pharmacother.* **102**, 344-353.
- Zhang, T., Liang, X., Shi, L., Wang, L., Chen, J., Kang, C., Zhu, J. and Mi, M. (2013) Estrogen receptor and PI3K/Akt signaling pathway involvement in S-(-)-equol-induced activation of Nrf2/ARE in endothelial cells. *PLoS ONE* **8**, e79075.
- Zheng, N., Zhang, P., Huang, H., Liu, W., Hayashi, T., Zang, L., Zhang, Y., Liu, L., Xia, M., Tashiro, S.-I., Onodera, S. and Ikejima, T. (2015) ER α down-regulation plays a key role in silibinin-induced autophagy and apoptosis in human breast cancer MCF-7 cells. *J. Pharmacol. Sci.* **128**, 97-107.
- Zou, H., Zhu, X. X., Zhang, G. B., Ma, Y., Wu, Y. and Huang, D. S. (2017) Silibinin: an old drug for hematological disorders. *Oncotarget* **8**, 89307-89314.