



# Assessment of body composition and impact of sarcopenia and sarcopenic obesity in patients with gastric cancer

Tatsuto Nishigori, Kazutaka Obama, Yoshiharu Sakai

Department of Surgery, Graduate School of Medicine, Kyoto University, Kyoto, Japan

*Contributions:* (I) Conception and design: All authors; (II) Administrative support: K Obama; (III) provision of study materials or patients: T Nishigori; (IV) Collection and assembly of data: T Nishigori; (V) Data analysis and interpretation: All authors; (VI) Manuscript writing: All authors; (VII) Final approval of manuscript: All authors.

*Correspondence to:* Kazutaka Obama, MD, PhD, FACS. Department of Surgery, Graduate School of Medicine, Kyoto University, 54 Kawahara-cho, Shogoin, Sakyo-ku, Kyoto, 606-8507, Japan. Email: kobama@kuhp.kyoto-u.ac.jp.

**Abstract:** Malnutrition is a critical problem in patients with gastric cancer (GC); however, no universally accepted marker that is convenient for clinical use has been defined. Recently, body composition has attracted considerable attention as a means to assess nutrition status in patients with cancer. The clinical role of skeletal muscle mass has also been increasingly recognized. In patients with GC, sarcopenia, which is the loss of skeletal muscle mass, was found to be significantly associated with increased post-surgical complications including hospital stay, healthcare costs, and poor survival. In addition, sarcopenic obesity, which combines the health risks of obesity and sarcopenia, is recognized as a strong risk factor for poor short- and long-term outcomes following gastrectomy. The mechanism linking sarcopenia to worse postoperative outcomes remains unclear; however, skeletal muscle has been found to act as an endocrine organ that produces substances affecting the immune system. In addition, sarcopenia was reported to be associated with toxicity and termination of chemotherapy. Patients with sarcopenia may be unable to react appropriately to the stress of gastrectomy and perioperative chemotherapy. To improve the short- and long-term outcomes of patients with GC and sarcopenia, adequate energy and protein intake are necessary during resistance training. In the present study, we performed a literature review and presented a method to evaluate body composition, the relationship between skeletal muscle mass and GC, and perioperative nutrition and exercise therapy for patients with sarcopenia.

**Keywords:** Body composition; sarcopenia; obesity; gastric cancer (GC); gastrectomy

Received: 11 September 2019; Accepted: 21 October 2019; Published: 05 April 2020.

doi: 10.21037/tgh.2019.10.13

View this article at: <http://dx.doi.org/10.21037/tgh.2019.10.13>

## Introduction

Gastrectomy is the most effective treatment for gastric cancer (GC) without distant metastasis (1). However, it is associated with the occurrence of postoperative complications, cancer recurrence, and death from other diseases. In addition, the post-surgical incidence of complications and survival rate among patients with similar cancer stage and demographics is heterogeneous. Identifying prognostic factors that allow a more accurate stratification of the preoperative risk remains an interest of GC experts.

To date, various factors such as advanced age, comorbidities, and molecular features have been reported to be associated with unfavorable outcomes following gastrectomy in patients with GC (2,3). However, most of those factors are difficult to manipulate preoperatively. Identifying modifiable factors is therefore necessary to overcome morbidity and cancer death in patients with GC.

Malnutrition is a critical problem, not only in patients with advanced GC, who can suffer from gastric outlet obstruction and bleeding, but also in patients with early GC, as their stomach presents reduced digestive capacity,

causing food intake to decrease after gastrectomy (4,5). In addition, neoadjuvant chemotherapy and chemoradiation therapy, which often worsen a patient's nutritional status, have become a standard in Western countries. Preoperative malnutrition therefore has significant room for improvement and several studies have investigated parameters to identify patients at nutritional risk. However, no universally accepted marker that is convenient for clinical use in patients with GC has been defined.

In patients with cancer, body mass composition and associated metabolic dysfunction have become an important preoperative consideration to predict postoperative outcomes. Since patients with GC often have unique metabolic problems, GC experts should understand body composition analysis. In this study, we conducted a literature review and introduce a method to evaluate body composition and the relationship between skeletal muscle mass and GC.

### Challenges in defining body mass composition

The body mass index (BMI) has been used for a long time to diagnose malnutrition. Low BMI has been commonly recognized as a marker for poor nutrition status, whereas high BMI is associated with cardiovascular and kidney diseases and diabetes, which is also an important risk factor. However, previous studies investigating the relationship between BMI and clinical outcomes in patients with GC have provided inconsistent results (5-10).

Weight gain and loss are not reliable indicators of body composition changes, due to fluid collection such as ascites or body edema. Males are likely to store body fat in the visceral area while females store it mainly subcutaneously. In addition, people tend to lose muscle mass and gain fat as they get older. Therefore, patients with similar BMIs can have different nutritional status.

Body composition, which is estimated through various simple techniques and precisely reflects a patient's metabolic profile, has recently attracted considerable attention. The clinical role of skeletal muscle mass is being increasingly recognized in patients with various cancers, and the amount of skeletal muscle mass is significantly associated with the post-surgical risk of complications, hospital stay, healthcare costs, and survival (11-18). Understanding the body composition analysis of a patient with GC and the relationship between GC and skeletal muscle mass can help address the potential metabolic problems encountered during the perioperative period.

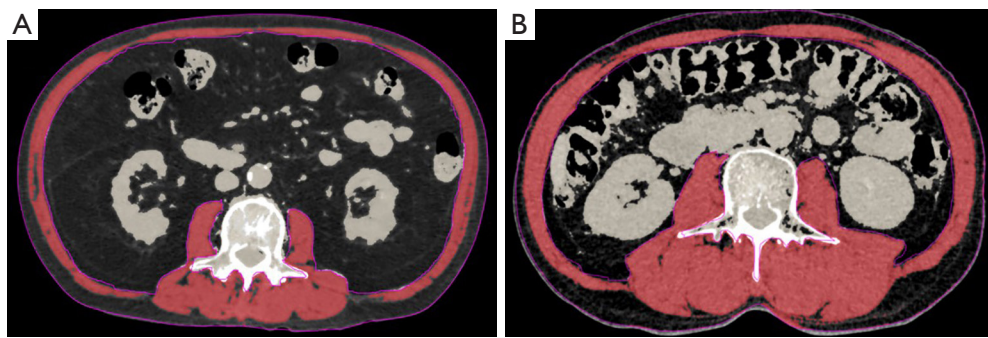
### Sarcopenia

Life expectancy has increased worldwide and aging is known to be associated with progressive loss of muscle mass (19,20). Muscle loss starts at 50 years of age and approximately 50% of the fibers is lost by 80 years of age (21). The term 'sarcopenia' (Greek 'sarx' or flesh + 'penia' or loss) was first proposed by Rosenberg in 1989, to designate the loss of skeletal muscle mass with aging (22). Sarcopenia can be classified into primary, which is caused by aging, and secondary, which is caused by immobility or diseases such as cancer (23). Moreover, sarcopenia can be also caused by both malnutrition, low levels of physical activity, and various diseases (24,25). Since sarcopenia may be caused by insufficient energy and protein intake, its prevalence in patients with GC with decreased food intake can be higher than in other cancer patients (26,27).

Muscle mass in patients with GC can be measured using two common approaches: bioelectrical impedance analysis (BIA) and computed tomography (CT). Dual-energy X-ray absorptiometry, another common method to measure muscle mass, is rarely used in the surgical field. Although BIA avoids exposing the patient to high radiation doses, it is influenced by the patient's fluid status. Although CT exposes the patient to a high radiation dose and requires expensive equipment and image analysis software, it is readily applicable to patients with GC during CT scan for staging and follow-up. Therefore, its clinical use is very convenient for clinical use for surgical candidates, as it requires no extra cost. Additionally, CT scans constitute a precise and gold standard tool to detect sarcopenia (28).

The authors have often adopted CT to identify sarcopenia (29-31). Skeletal muscle, visceral fat, and other tissues can be distinguished using Hounsfield units (HUs), with skeletal muscle's cross-sectional area falling within the range from -29 to 150 HU. Representative images are shown in *Figure 1*, which includes the psoas, erector spinae, quadratus lumborum, transversus abdominis, external and internal obliques, and rectus abdominis muscles. This landmark is known to correlate with whole-body muscle mass (32).

To calculate the skeletal muscle mass index (SMI), skeletal muscle mass assessed by BIA or CT scan is divided by the square of the patient's height. Sex-specific SMI cut-offs are used to diagnose sarcopenia. Some researchers have used other methods and criteria, such as muscle quality, to report significant clinical impact of skeletal muscle in patients with GC (33-35).



**Figure 1** Computed tomography images of the third lumbar vertebra level, used to assess skeletal muscle mass. Subpanels (A) and (B) illustrate the findings of two male patients with gastric cancer who had identical body mass index ( $22 \text{ kg/m}^2$ ). Red indicates skeletal muscle mass areas. Patient (A) of age 62 years had sarcopenia with skeletal muscle index (SMI) of  $36.0 \text{ cm}^2/\text{m}^2$ , whereas 72-year-old patient (B) had SMI of  $53.3 \text{ cm}^2/\text{m}^2$ .

**Table 1** Previous studies investigating the impact of preoperative SMI-defined sarcopenia on the postoperative outcomes in patients with gastric cancer

Authors	Country	No. of patients, sarcopenia/total	Muscle mass measurement method	SMI cut-offs to define sarcopenia		Significant impact of sarcopenia	
				Male	Female	Postoperative complications	Survival
Fukuda <i>et al.</i> (37)	Japan	21/99 (21%)	BIA	8.87	6.42	Yes	N/A
Wang <i>et al.</i> (16)	China	32/255 (13%)	CT	36.0	29.0	Yes	N/A
Huang <i>et al.</i> (38)	China	176/470 (37%)	CT	40.8	34.9	Yes (only severe sarcopenia)	N/A
Zhang <i>et al.</i> (39)	China	24/156 (15%)	CT	40.8	34.9	Yes	N/A
Zhuang <i>et al.</i> (44)	China	389/937 (42%)	CT	40.8	34.9	Yes	Yes
Nishigori <i>et al.</i> (30)	Japan	76/177 (43%)	CT	53.0 for BMI $\geq 25.0$ ; 43.0 for BMI $< 25.0$	41.0	N/A	Yes
Kudou <i>et al.</i> (40)	Japan	42/148 (28%)	CT	53.0 for BMI $\geq 25.0$ ; 43.0 for BMI $< 25.0$	41.0	No	Yes
Tegels <i>et al.</i> (41)	Netherlands	86/152 (57%)	CT	53.0 for BMI $\geq 25.0$ ; 43.0 for BMI $< 25.0$	41.0	No	No
Sakurai <i>et al.</i> (42)	Japan	142/569 (25%)	CT	43.2	34.6	No	Yes
Tamandl <i>et al.</i> (43)	Austria	130/200 (65%)	CT	55.0	39.0	N/A	Yes

Severe sarcopenia was defined as both low muscle strength and low physical performance in addition to low muscle mass. BIA, bioelectrical impedance analysis; CT, computed tomography; SMI, skeletal muscle index (CT:  $\text{cm}^2/\text{m}^2$ , BIA:  $\text{kg}/\text{m}^2$ ); BMI, body mass index ( $\text{kg}/\text{m}^2$ ); N/A, not applicable.

Previous studies (16,30,36-44) examining the relationship between SMI and clinical outcomes in patients with GC undergoing surgery are summarized in *Table 1*. Many studies from East Asia have reported an association between preoperative sarcopenia and a higher rate of postoperative

complications and a poorer prognosis (16,30,36-44). In those studies, the prevalence of sarcopenia ranged from 13% to 65%, which reflects different countries and ethnicities as well as the unavailability of universally accepted cut-off values to define sarcopenia.

As shown in *Table 1*, the cut-off values reported by Zhuang *et al.* were commonly used in Chinese populations (44). The authors performed a study to determine the optimal sarcopenia cut-off values and to predict the long-term survival of Japanese patients with GC (30). Five definitions of CT-based SMI, previously reported to be associated with prognosis in cancer patients were used to define sarcopenia (16,40,42,44,45). The BMI-incorporated cut-off values reported by Martin *et al.* were associated with survival rate, both in univariate and multivariate analyses (40,46). Although Tegels *et al.* reported sarcopenia based on Martin *et al.*'s definition, which was not associated with postoperative outcomes (41), the prognostic significance of sarcopenia based on the cut-offs reported by Martin *et al.* has been validated in a number of malignancies (40,46-51). The authors believe that this BMI-incorporated definition can be used to determine sarcopenia in various countries and ethnicities.

According to a previous systematic review, preoperative sarcopenia diagnosed according to various definitions has significant impact on the short- and long-term postoperative outcome of GC patients (52). However, the best sarcopenia cut-offs should be determined to realize preoperative risk stratification and counter-measures, as well as to promote shared decision-making.

Several previous studies have identified sarcopenia based on muscle mass alone. However, the European Working Group on Sarcopenia in Older People (EWGSOP) and the Asian Working Group for Sarcopenia (AWGS), recommend the simultaneous evaluation of muscle strength or physical function, to diagnose sarcopenia (28,53). Muscle strength and physical function are commonly measured by grip strength and walking speed, respectively. In the previous studies shown in *Table 1*, Fukuda *et al.*, Wang *et al.*, and Huang *et al.* defined preoperative sarcopenia based on the EWGSOP or AWGS algorithms and demonstrated that it is a risk factor for postoperative outcomes (16,37,38). Future prospective studies investigating the impact of sarcopenia on clinical outcomes of patients with GC should evaluate those parameters simultaneously with skeletal muscle mass.

Although the mechanism linking preoperative sarcopenia to worse postoperative outcomes remains unclear, skeletal muscle has been reported to play a role as an endocrine organ, producing cytokines and peptides that affect the immune system (54,55). Sarcopenic populations have been shown to have impaired cellular immune function and increased inflammatory activity (56). Moreover, in patients with GC, higher neutrophil/lymphocyte and platelet/

lymphocyte ratios have been shown to be associated with preoperative sarcopenia (57). An association between sarcopenia and chemotherapy toxicity and termination has also been reported (58-61). In patients with GC receiving chemotherapy for metastatic diseases, low SMI was an independent predictor of poor outcome (36,62). In addition, skeletal muscle is known to constitute a source of amino acids in times of stress (63). Taken together, these findings suggest that sarcopenic patients with GC who are unable to react appropriately to the stress of gastrectomy and chemotherapy have unfavorable postoperative outcomes.

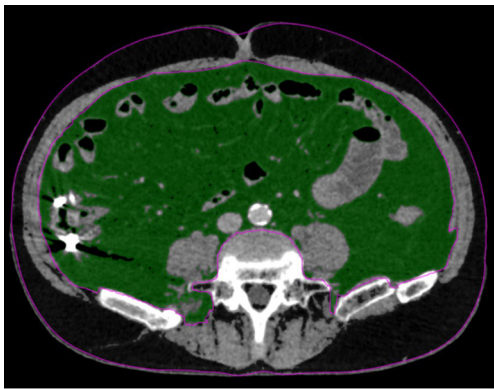
### Sarcopenic obesity

The worldwide population is aging and the incidence of obesity rises rapidly (64). The association between visceral fat and metabolic syndrome and other serious diseases is well known (65-68). Moreover, visceral obesity has been reported as associated with high complication rates in patients with GC undergoing surgery (31,69,70).

Sarcopenic obesity combines the health risks of obesity and sarcopenia, and is considered a worst-case scenario (71,72). Although the definition of obesity remains unclear, BMI and visceral fat mass are commonly used to define overweight and obesity (30,31,73,74). In Asian populations, BMI  $\geq 25$  or 30 kg/cm<sup>2</sup> and visceral fat area  $\geq 100$  cm<sup>2</sup> have been used as a threshold (30,31,75-79). Visceral fat mass can be measured by assessing the cross-sectional area at the level of the umbilicus on CT scan (32,80,81), where fat falls within the range of -190 to -30 HU (32). *Figure 2* shows a representative CT image at the level of the umbilicus. In previous studies, sarcopenic obesity in patients with GC undergoing surgery was strongly associated with poor short- and long-term outcomes (30,31,73,74).

The mechanism linking sarcopenic obesity and poor outcomes also remains unclear. The inflammatory cytokines produced by adipose tissue, especially visceral fat, accelerate muscle catabolism, thereby contributing for the vicious cycle that initiates and sustains sarcopenic obesity (82). This, in turn, is linked with insulin resistance and dysmetabolism (83,84). In sarcopenic obesity patients, the response to the stress of surgery and chemotherapy may be further impaired, resulting in increased complications and poor prognosis.

As shown *Figure 1*, patients with obesity and muscle loss could not be distinguished by appearance, unlike cachexic or underweight ones. Moreover, assessing skeletal muscle mass in patients with GC who are not thin, is very important to



**Figure 2** Computed tomography images of the umbilicus level, used to assess visceral fat (green field).

stratify morbidity and mortality outcomes.

### Interventions for sarcopenia

In sarcopenic patients with GC, preoperative interventions to improve body composition may lead to favorable outcomes. Fukuda *et al.* reported that sarcopenic patients with GC consumed less energy and protein preoperatively (37). In addition to resistance training, adequate intake of energy and protein is crucial to manage sarcopenia (85,86). Protein supplementation during resistance training, in particular the intake of essential amino acids such as leucine, was reported to increase protein synthesis and skeletal muscle mass (87-90). Although time to surgery is limited in preoperative patients with GC, exercise training was found to improve exercise capacity even during short preoperative periods (91-93). Yamamoto *et al.* reported that 3 weeks of preoperative exercise and nutritional therapy reduced sarcopenia and improved the postoperative outcomes of patients with GC and sarcopenia (94). They used HMB supplementation during resistance training, which was reported to effectively increase the lean body mass and to decrease muscle damage (95,96). Regarding interventions for sarcopenic obesity, energy intake restriction on fat-mass loss alone should not be performed, as it was reported to further decrease skeletal muscle mass (97,98). Cho *et al.* reported that preoperative exercise without diet control reduced visceral fat mass and postoperative complications following gastrectomy, in patients with GC and metabolic syndrome (99). Since few reports have looked into the effects of perioperative nutrition therapy during resistance training, in patients with

GC and sarcopenia or sarcopenic obesity, further studies are necessary.

### Conclusions

Identifying sarcopenic patients has several potential benefits in terms of GC treatment management. Currently, body composition can be easily evaluated using CT or BIA. A previous study reported that over half of patients with GC undergoing gastrectomy lost 5% or more of lean body mass one month after surgery (100). Loss of skeletal muscle mass is known to be associated with functional limitations, physical disability and decreased quality of life (101). In addition, loss of skeletal muscle mass after gastrectomy has been shown to impair compliance with adjuvant chemotherapy, resulting in poor prognosis (102-104). Medical workers involved in GC treatment should understand the significant role of skeletal muscle mass and perform constant body composition assessment before and after surgery and chemotherapy. In addition, patients with GC and sarcopenia should be provided appropriate energy and protein intake during resistance training, to improve short- and long-term outcomes.

### Acknowledgments

None.

### Footnote

*Conflicts of Interest:* The authors have no conflicts of interest to declare.

*Ethical Statement:* The authors are accountable for all aspects of the work in ensuring that questions related to the accuracy or integrity of any part of the work are appropriately investigated and resolved.

### References

1. Japanese Gastric Cancer Association. Japanese gastric cancer treatment guidelines 2014 (ver. 4). *Gastric Cancer* 2017;20:1-19.
2. Asplund J, Kauppila JH, Mattsson F, et al. Survival Trends in Gastric Adenocarcinoma: A Population-Based Study in Sweden. *Ann Surg Oncol* 2018;25:2693-702.
3. Seo JY, Jin EH, Jo HJ, et al. Clinicopathologic and molecular features associated with patient age in gastric

- cancer. *World J Gastroenterol* 2015;21:6905-13.
4. Fujiya K, Kawamura T, Omae K, et al. Impact of Malnutrition After Gastrectomy for Gastric Cancer on Long-Term Survival. *Ann Surg Oncol* 2018;25:974-83.
  5. Kubo H, Komatsu S, Ichikawa D, et al. Impact of Body Weight Loss on Recurrence After Curative Gastrectomy for Gastric Cancer. *Anticancer Res* 2016;36:807-13.
  6. Lee JH, Park B, Joo J, et al. Body mass index and mortality in patients with gastric cancer: a large cohort study. *Gastric Cancer* 2018;21:913-24.
  7. Feng F, Zheng G, Guo X, et al. Impact of body mass index on surgical outcomes of gastric cancer. *BMC Cancer* 2018;18:151.
  8. Kulig J, Sierzega M, Kolodziejczyk P, et al. Implications of overweight in gastric cancer: A multicenter study in a Western patient population. *Eur J Surg Oncol* 2010;36:969-76.
  9. Tokunaga M, Hiki N, Fukunaga T, et al. Better 5-Year Survival Rate Following Curative Gastrectomy in Overweight Patients. *Ann Surg Oncol* 2009;16:3245-51.
  10. Bickenbach KA, Denton B, Gonen M, et al. Impact of Obesity on Perioperative Complications and Long-term Survival of Patients with Gastric Cancer. *Ann Surg Oncol* 2013;20:780-7.
  11. Norman K, Otten L. Financial impact of sarcopenia or low muscle mass - A short review. *Clin Nutr* 2019;38:1489-95.
  12. Sheetz KH, Waits SA, Terjimanian MN, et al. Cost of Major Surgery in the Sarcopenic Patient. *J Am Coll Surg* 2013;217:813-8.
  13. Ongaro E, Buoro V, Cinausero M, et al. Sarcopenia in gastric cancer: when the loss costs too much. *Gastric Cancer* 2017;20:563-72.
  14. Lieffers JR, Bathe OF, Fassbender K, et al. Sarcopenia is associated with postoperative infection and delayed recovery from colorectal cancer resection surgery. *Br J Cancer* 2012;107:931-6.
  15. Miyamoto Y, Baba Y, Sakamoto Y, et al. Sarcopenia is a Negative Prognostic Factor After Curative Resection of Colorectal Cancer. *Ann Surg Oncol* 2015;22:2663-8.
  16. Wang SL, Zhuang CL, Huang DD, et al. Sarcopenia Adversely Impacts Postoperative Clinical Outcomes Following Gastrectomy in Patients with Gastric Cancer: A Prospective Study. *Ann Surg Oncol* 2016;23:556-64.
  17. Joglekar S, Asghar A, Mott SL, et al. Sarcopenia Is an Independent Predictor of Complications Following Pancreatectomy for Adenocarcinoma. *J Surg Oncol* 2015;111:771-5.
  18. Harimoto N, Shirabe K, Yamashita YI, et al. Sarcopenia as a predictor of prognosis in patients following hepatectomy for hepatocellular carcinoma. *Br J Surg* 2013;100:1523-30.
  19. Christensen K, Doblhammer G, Rau R, et al. Ageing populations: the challenges ahead. *Lancet* 2009;374:1196-208.
  20. Doherty TJ. Invited review: Aging and sarcopenia. *J Appl Physiol* (1985) 2003;95:1717-27.
  21. Faulkner JA, Larkin LM, Claflin DR, et al. Age-related changes in the structure and function of skeletal muscles. *Clin Exp Pharmacol Physiol* 2007;34:1091-6.
  22. Rosenberg IH. Sarcopenia: origins and clinical relevance. *J Nutr* 1997;127:990S-991S.
  23. Santilli V, Bernetti A, Mangone M, et al. Clinical definition of sarcopenia. *Clin Cases Miner Bone Metab* 2014;11:177-80.
  24. Baumgartner RN, Koehler KM, Gallagher D, et al. Epidemiology of sarcopenia among the elderly in New Mexico. *Am J Epidemiol* 1998;147:755-63.
  25. Muscaritoli M, Anker SD, Argiles J, et al. Consensus definition of sarcopenia, cachexia and pre-cachexia: joint document elaborated by Special Interest Groups (SIG) "cachexia-anorexia in chronic wasting diseases" and "nutrition in geriatrics". *Clin Nutr* 2010;29:154-9.
  26. Scott D, Blizzard L, Fell J, et al. Associations between dietary nutrient intake and muscle mass and strength in community-dwelling older adults: the Tasmanian Older Adult Cohort Study. *J Am Geriatr Soc* 2010;58:2129-34.
  27. Valenzuela RE, Ponce JA, Morales-Figueroa GG, et al. Insufficient amounts and inadequate distribution of dietary protein intake in apparently healthy older adults in a developing country: implications for dietary strategies to prevent sarcopenia. *Clin Interv Aging* 2013;8:1143-8.
  28. Cruz-Jentoft AJ, Bahat G, Bauer J, et al. Sarcopenia: revised European consensus on definition and diagnosis. *Age Ageing* 2019;48:16-31.
  29. Nishigori T, Okabe H, Tanaka E, et al. Sarcopenia as a predictor of pulmonary complications after esophagectomy for thoracic esophageal cancer. *J Surg Oncol* 2016;113:678-84.
  30. Nishigori T, Tsunoda S, Obama K, et al. Optimal Cutoff Values of Skeletal Muscle Index to Define Sarcopenia for Prediction of Survival in Patients with Advanced Gastric Cancer. *Ann Surg Oncol* 2018;25:3596-603.
  31. Nishigori T, Tsunoda S, Okabe H, et al. Impact of Sarcopenic Obesity on Surgical Site Infection after Laparoscopic Total Gastrectomy. *Ann Surg Oncol* 2016;23:524-31.
  32. Mourtzakis M, Prado CM, Lieffers JR, et al. A practical

- and precise approach to quantification of body composition in cancer patients using computed tomography images acquired during routine care. *Appl Physiol Nutr Metab* 2008;33:997-1006.
33. Kuwada K, Kuroda S, Kikuchi S, et al. Sarcopenia and Comorbidity in Gastric Cancer Surgery as a Useful Combined Factor to Predict Eventual Death from Other Causes. *Ann Surg Oncol* 2018;25:1160-6.
  34. Kawamura T, Makuuchi R, Tokunaga M, et al. Long-Term Outcomes of Gastric Cancer Patients with Preoperative Sarcopenia. *Ann Surg Oncol* 2018;25:1625-32.
  35. Lu J, Zheng ZF, Li P, et al. A Novel Preoperative Skeletal Muscle Measure as a Predictor of Postoperative Complications, Long-Term Survival and Tumor Recurrence for Patients with Gastric Cancer After Radical Gastrectomy. *Ann Surg Oncol* 2018;25:439-48.
  36. Lee JS, Kim YS, Kim EY, et al. Prognostic significance of CT-determined sarcopenia in patients with advanced gastric cancer. *PLoS One* 2018;13:e0202700.
  37. Fukuda Y, Yamamoto K, Hirao M, et al. Sarcopenia is associated with severe postoperative complications in elderly gastric cancer patients undergoing gastrectomy. *Gastric Cancer* 2016;19:986-93.
  38. Huang DD, Chen XX, Chen X, et al. Sarcopenia predicts 1-year mortality in elderly patients undergoing curative gastrectomy for gastric cancer: a prospective study. *J Cancer Res Clin Oncol* 2016;142:2347-56.
  39. Zhang Y, Wang JP, Wang XL, et al. Computed tomography-quantified body composition predicts short-term outcomes after gastrectomy in gastric cancer. *Curr Oncol* 2018;25:e411-22.
  40. Kudou K, Saeki H, Nakashima Y, et al. Prognostic Significance of Sarcopenia in Patients with Esophagogastric Junction Cancer or Upper Gastric Cancer. *Ann Surg Oncol* 2017;24:1804-10.
  41. Tegels JJ, van Vugt JL, Reisinger KW, et al. Sarcopenia Is Highly Prevalent in Patients Undergoing Surgery for Gastric Cancer But Not Associated With Worse Outcomes. *J Surg Oncol* 2015;112:403-7.
  42. Sakurai K, Kubo N, Tamura T, et al. Adverse Effects of Low Preoperative Skeletal Muscle Mass in Patients Undergoing Gastrectomy for Gastric Cancer. *Ann Surg Oncol* 2017;24:2712-9.
  43. Tamandl D, Paireder M, Asari R, et al. Markers of sarcopenia quantified by computed tomography predict adverse long-term outcome in patients with resected oesophageal or gastro-oesophageal junction cancer. *Eur Radiol* 2016;26:1359-67.
  44. Zhuang CL, Huang DD, Pang WY, et al. Sarcopenia is an Independent Predictor of Severe Postoperative Complications and Long-Term Survival After Radical Gastrectomy for Gastric Cancer: Analysis from a Large-Scale Cohort. *Medicine (Baltimore)* 2016;95:e3164.
  45. Prado CM, Liefers JR, McCargar LJ, et al. Prevalence and clinical implications of sarcopenic obesity in patients with solid tumours of the respiratory and gastrointestinal tracts: a population-based study. *Lancet Oncol* 2008;9:629-35.
  46. Martin L, Birdsell L, Macdonald N, et al. Cancer cachexia in the age of obesity: skeletal muscle depletion is a powerful prognostic factor, independent of body mass index. *J Clin Oncol* 2013;31:1539-47.
  47. Sharma P, Zargar-Shoshtari K, Caracciolo JT, et al. Sarcopenia as a predictor of overall survival after cytoreductive nephrectomy for metastatic renal cell carcinoma. *Urol Oncol* 2015;33:339.e17-23.
  48. Meza-Junco J, Montano-Loza AJ, Baracos VE, et al. Sarcopenia as a prognostic index of nutritional status in concurrent cirrhosis and hepatocellular carcinoma. *J Clin Gastroenterol* 2013;47:861-70.
  49. Fukushima H, Yokoyama M, Nakanishi Y, et al. Sarcopenia as a prognostic biomarker of advanced urothelial carcinoma. *PLoS One* 2015;10:e0115895.
  50. Fukushima H, Nakanishi Y, Kataoka M, et al. Prognostic Significance of Sarcopenia in Patients with Metastatic Renal Cell Carcinoma. *J Urol* 2016;195:26-32.
  51. Begini P, Gigante E, Antonelli G, et al. Sarcopenia predicts reduced survival in patients with hepatocellular carcinoma at first diagnosis. *Ann Hepatol* 2017;16:107-14.
  52. Kamarajah SK, Bundred J, Tan BHL. Body composition assessment and sarcopenia in patients with gastric cancer: a systematic review and meta-analysis. *Gastric Cancer* 2019;22:10-22.
  53. Chen LK, Liu LK, Woo J, et al. Sarcopenia in Asia: consensus report of the Asian Working Group for Sarcopenia. *J Am Med Dir Assoc* 2014;15:95-101.
  54. Pedersen BK, Febbraio MA. Muscles, exercise and obesity: skeletal muscle as a secretory organ. *Nat Rev Endocrinol* 2012;8:457-65.
  55. Pedersen BK, Bruunsgaard H. Possible beneficial role of exercise in modulating low-grade inflammation in the elderly. *Scand J Med Sci Sports* 2003;13:56-62.
  56. Bruunsgaard H, Pedersen BK. Special feature for the Olympics: effects of exercise on the immune system: effects of exercise on the immune system in the elderly population. *Immunol Cell Biol* 2000;78:523-31.
  57. Lin J, Zhang W, Huang Y, et al. Sarcopenia is associated

- with the neutrophil/lymphocyte and platelet/lymphocyte ratios in operable gastric cancer patients: a prospective study. *Cancer Manag Res* 2018;10:4935-44.
58. Tan BH, Brammer K, Randhawa N, et al. Sarcopenia is associated with toxicity in patients undergoing neo-adjuvant chemotherapy for oesophago-gastric cancer. *Eur J Surg Oncol* 2015;41:333-8.
  59. Antoun S, Borget I, Lanoy E. Impact of sarcopenia on the prognosis and treatment toxicities in patients diagnosed with cancer. *Curr Opin Support Palliat Care* 2013;7:383-9.
  60. Prado CM, Baracos VE, McCargar LJ, et al. Body composition as an independent determinant of 5-fluorouracil-based chemotherapy toxicity. *Clin Cancer Res* 2007;13:3264-8.
  61. Prado CM, Baracos VE, McCargar LJ, et al. Sarcopenia as a Determinant of Chemotherapy Toxicity and Time to Tumor Progression in Metastatic Breast Cancer Patients Receiving Capecitabine Treatment. *Clin Cancer Res* 2009;15:2920-6.
  62. Hayashi N, Ando Y, Gyawali B, et al. Low skeletal muscle density is associated with poor survival in patients who receive chemotherapy for metastatic gastric cancer. *Oncol Rep* 2016;35:1727-31.
  63. Wolfe RR. Regulation of skeletal muscle protein metabolism in catabolic states. *Curr Opin Clin Nutr Metab Care* 2005;8:61-5.
  64. NCD Risk Factor Collaboration (NCD-RisC). Trends in adult body-mass index in 200 countries from 1975 to 2014: a pooled analysis of 1698 population-based measurement studies with 19.2 million participants. *Lancet* 2016;387:1377-96.
  65. Amato MC, Giordano C, Galia M, et al. Visceral Adiposity Index: a reliable indicator of visceral fat function associated with cardiometabolic risk. *Diabetes Care* 2010;33:920-2.
  66. Després JP, Lemieux I. Abdominal obesity and metabolic syndrome. *Nature* 2006;444:881-7.
  67. Tsukada K, Miyazaki T, Kato H, et al. Body fat accumulation and postoperative complications after abdominal surgery. *Am Surg* 2004;70:347-51.
  68. Harada K, Baba Y, Ishimoto T, et al. Low Visceral Fat Content is Associated with Poor Prognosis in a Database of 507 Upper Gastrointestinal Cancers. *Ann Surg Oncol* 2015;22:3946-53.
  69. Kunisaki C, Makino H, Takagawa R, et al. Predictive factors for surgical complications of laparoscopy-assisted distal gastrectomy for gastric cancer. *Surg Endosc* 2009;23:2085-93.
  70. Yoshikawa K, Shimada M, Kurita N, et al. Visceral fat area is superior to body mass index as a predictive factor for risk with laparoscopy-assisted gastrectomy for gastric cancer. *Surg Endosc* 2011;25:3825-30.
  71. Chung JY, Kang HT, Lee DC, et al. Body composition and its association with cardiometabolic risk factors in the elderly: A focus on sarcopenic obesity. *Arch Gerontol Geriatr* 2013;56:270-8.
  72. Lim S, Kim JH, Yoon JW, et al. Sarcopenic obesity: prevalence and association with metabolic syndrome in the Korean Longitudinal Study on Health and Aging (KLoSHA). *Diabetes Care* 2010;33:1652-4.
  73. Zhang WT, Lin J, Chen WS, et al. Sarcopenic Obesity Is Associated with Severe Postoperative Complications in Gastric Cancer Patients Undergoing Gastrectomy: a Prospective Study. *J Gastrointest Surg* 2018;22:1861-9.
  74. Lou N, Chi CH, Chen XD, et al. Sarcopenia in overweight and obese patients is a predictive factor for postoperative complication in gastric cancer: A prospective study. *Eur J Surg Oncol* 2017;43:188-95.
  75. Lu CW, Yang KC, Chang HH, et al. Sarcopenic obesity is closely associated with metabolic syndrome. *Obes Res Clin Pract* 2013;7:e301-7.
  76. Lim KI, Yang SJ, Kim TN, et al. The association between the ratio of visceral fat to thigh muscle area and metabolic syndrome: the Korean Sarcopenic Obesity Study (KSOS). *Clin Endocrinol (Oxf)* 2010;73:588-94.
  77. Baek SJ, Nam GE, Han KD, et al. Sarcopenia and sarcopenic obesity and their association with dyslipidemia in Korean elderly men: the 2008-2010 Korea National Health and Nutrition Examination Survey. *J Endocrinol Invest* 2014;37:247-60.
  78. WHO Expert Consultation. Appropriate body-mass index for Asian populations and its implications for policy and intervention strategies. *Lancet* 2004;363:157-63.
  79. Kanazawa M, Yoshiike N, Osaka T, et al. Criteria and classification of obesity in Japan and Asia-Oceania. *World Rev Nutr Diet* 2005;94:1-12.
  80. Tokunaga K, Matsuzawa Y, Ishikawa K, et al. A novel technique for the determination of body fat by computed tomography. *Int J Obes* 1983;7:437-45.
  81. Kvist H, Chowdhury B, Sjostrom L, et al. Adipose tissue volume determination in males by computed tomography and 40K. *Int J Obes* 1988;12:249-66.
  82. Schragger MA, Metter EJ, Simonsick E, et al. Sarcopenic obesity and inflammation in the InCHIANTI study. *J Appl Physiol* (1985) 2007;102:919-25.
  83. Doyle SL, Donohoe CL, Lysaght J, et al. Visceral obesity, metabolic syndrome, insulin resistance and cancer. *Proc*



- Nutr Soc 2012;71:181-9.
84. Srikanthan P, Hevener AL, Karlamangla AS. Sarcopenia exacerbates obesity-associated insulin resistance and dysglycemia: findings from the National Health and Nutrition Examination Survey III. *PLoS One* 2010;5:e10805.
  85. Calvani R, Miccheli A, Landi F, et al. Current nutritional recommendations and novel dietary strategies to manage sarcopenia. *J Frailty Aging* 2013;2:38-53.
  86. Houston DK, Nicklas BJ, Ding J, et al. Dietary protein intake is associated with lean mass change in older, community-dwelling adults: the Health, Aging, and Body Composition (Health ABC) Study. *Am J Clin Nutr* 2008;87:150-5.
  87. Cermak NM, Res PT, de Groot LC, et al. Protein supplementation augments the adaptive response of skeletal muscle to resistance-type exercise training: a meta-analysis. *Am J Clin Nutr* 2012;96:1454-64.
  88. Kim HK, Suzuki T, Saito K, et al. Effects of exercise and amino acid supplementation on body composition and physical function in community-dwelling elderly Japanese sarcopenic women: a randomized controlled trial. *J Am Geriatr Soc* 2012;60:16-23.
  89. Katsanos CS, Kobayashi H, Sheffield-Moore M, et al. A high proportion of leucine is required for optimal stimulation of the rate of muscle protein synthesis by essential amino acids in the elderly. *Am J Physiol Endocrinol Metab* 2006;291:E381-7.
  90. Volpi E, Kobayashi H, Sheffield-Moore M, et al. Essential amino acids are primarily responsible for the amino acid stimulation of muscle protein anabolism in healthy elderly adults. *Am J Clin Nutr* 2003;78:250-8.
  91. Mayo NE, Feldman L, Scott S, et al. Impact of preoperative change in physical function on postoperative recovery: argument supporting prehabilitation for colorectal surgery. *Surgery* 2011;150:505-14.
  92. Hoogboom TJ, Dronkers JJ, van den Ende CH, et al. Preoperative therapeutic exercise in frail elderly scheduled for total hip replacement: a randomized pilot trial. *Clin Rehabil* 2010;24:901-10.
  93. Li C, Carli F, Lee L, et al. Impact of a trimodal prehabilitation program on functional recovery after colorectal cancer surgery: a pilot study. *Surg Endosc* 2013;27:1072-82.
  94. Yamamoto K, Nagatsuma Y, Fukuda Y, et al. Effectiveness of a preoperative exercise and nutritional support program for elderly sarcopenic patients with gastric cancer. *Gastric Cancer* 2017;20:913-8.
  95. Panton LB, Rathmacher JA, Baier S, et al. Nutritional supplementation of the leucine metabolite beta-hydroxy-beta-methylbutyrate (hmb) during resistance training. *Nutrition* 2000;16:734-9.
  96. Nissen S, Sharp R, Ray M, et al. Effect of leucine metabolite beta-hydroxy-beta-methylbutyrate on muscle metabolism during resistance-exercise training. *J Appl Physiol* (1985) 1996;81:2095-104.
  97. Chomentowski P, Dube JJ, Amati F, et al. Moderate exercise attenuates the loss of skeletal muscle mass that occurs with intentional caloric restriction-induced weight loss in older, overweight to obese adults. *J Gerontol A Biol Sci Med Sci* 2009;64:575-80.
  98. Mason C, Xiao L, Imayama I, et al. Influence of diet, exercise, and serum vitamin d on sarcopenia in postmenopausal women. *Med Sci Sports Exerc* 2013;45:607-14.
  99. Cho H, Yoshikawa T, Oba MS, et al. Matched pair analysis to examine the effects of a planned preoperative exercise program in early gastric cancer patients with metabolic syndrome to reduce operative risk: the Adjuvant Exercise for General Elective Surgery (AEGES) study group. *Ann Surg Oncol* 2014;21:2044-50.
  100. Aoyama T, Sato T, Segami K, et al. Risk Factors for the Loss of Lean Body Mass After Gastrectomy for Gastric Cancer. *Ann Surg Oncol* 2016;23:1963-70.
  101. Cruz-Jentoft AJ, Baeyens JP, Bauer JM, et al. Sarcopenia: European consensus on definition and diagnosis: Report of the European Working Group on Sarcopenia in Older People. *Age Ageing* 2010;39:412-23.
  102. Kugimiya N, Harada E, Oka K, et al. Loss of skeletal muscle mass after curative gastrectomy is a poor prognostic factor. *Oncol Lett* 2018;16:1341-7.
  103. Aoyama T, Kawabe T, Fujikawa H, et al. Loss of Lean Body Mass as an Independent Risk Factor for Continuation of S-1 Adjuvant Chemotherapy for Gastric Cancer. *Ann Surg Oncol* 2015;22:2560-6.
  104. Choi MH, Kim KA, Hwang SS, et al. CT-quantified muscle and fat change in patients after surgery or endoscopic resection for early gastric cancer and its impact on long-term outcomes. *Medicine (Baltimore)* 2018;97:e13878.

doi: 10.21037/tgh.2019.10.13

**Cite this article as:** Nishigori T, Obama K, Sakai Y. Assessment of body composition and impact of sarcopenia and sarcopenic obesity in patients with gastric cancer. *Transl Gastroenterol Hepatol* 2020;5:22.