

## Erratum

# Expression of exportin-1 in diffuse large B-cell lymphoma: immunohistochemistry and TCGA analyses: Int J Clin Exp Pathol. 2018; 11(12): 5547-5560

Bin Luo<sup>1\*</sup>, Lan-Shan Huang<sup>2\*</sup>, Yong-Yao Gu<sup>2</sup>, Chun-Yao Li<sup>2</sup>, Hui-Ping Lu<sup>2</sup>, Gang Chen<sup>2</sup>, Zhi-Gang Peng<sup>1\*</sup>, Zhen-Bo Feng<sup>2\*</sup>

Departments of <sup>1</sup>Medical Oncology, <sup>2</sup>Pathology, The First Affiliated Hospital of Guangxi Medical University, Nanning, Guangxi Zhuang Autonomous Region, People's Republic of China. \*Equal contributors.

Received May 9, 2019; Accepted May 24, 2019; Epub July 1, 2019; Published July 15, 2019

In this article published in IJCEP, the **Figure 2** was published incorrectly. We want to correct the **Figure 2** for this paper.

In this article published in IJCEP, the "Acknowledgement" section has been corrected. We wish to correct the "Acknowledgement" to this paper. The acknowledgements section was also published incorrectly and should have appeared as follows:

### Acknowledgements

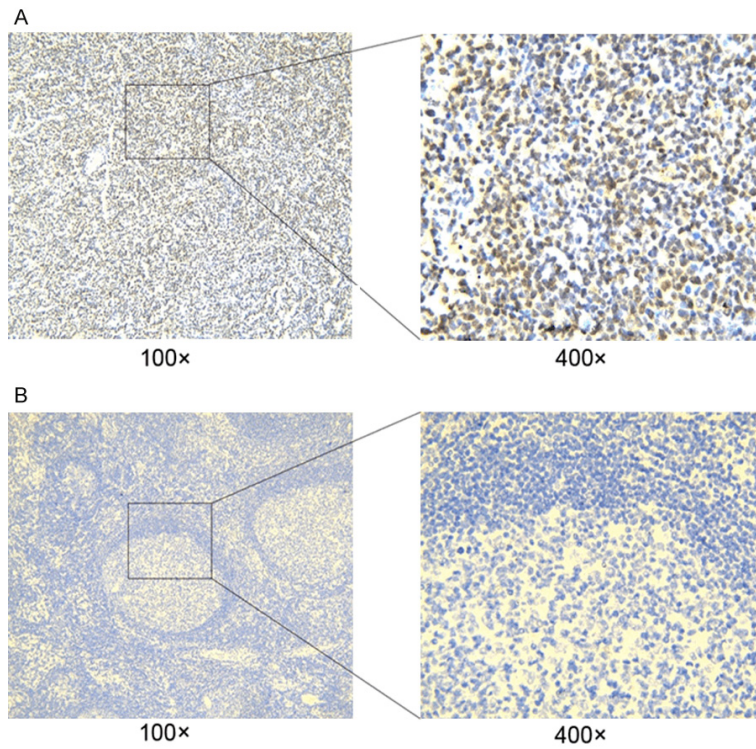
We would like to thank the Fund of the Key Programs of University Scientific Research of Guangxi Education Agency (No. ZD2014033), the Key Programs of Guangxi Natural Science Fund (No. 2015GXNSFDA139028), and the Promoting Project of Basic Capacity for University Young and Middle-aged Teachers in Guangxi (2017KY0091). The funders had no role in the study design, data collection and

analysis, decision to publish, or preparation of the manuscript. We acknowledge the cBioPortal for Cancer Genomics site (<http://www.cbioportal.org/>) and the TCGA Research Network for generating TCGA datasets (<http://cancergenome.nih.gov/>).

The authors express regret for this mistake.

**Address correspondence to:** Zhi-Gang Peng, Department of Medical Oncology, The First Affiliated Hospital of Guangxi Medical University, 6 Shuangyong Road, Nanning 530021, Guangxi Zhuang Autonomous Region, People's Republic of China. Tel: +86 771 5353121; Fax: +86 771 5353121; E-mail: drpzig001@163.com; Zhen-Bo Feng, Department of Pathology, The First Affiliated Hospital of Guangxi Medical University, 6 Shuangyong Road, Nanning 530021, Guangxi Zhuang Autonomous Region, People's Republic of China. Tel: +86 771 5356534; Fax: +86 771 5356534; E-mail: fengzhenbo\_gxmu@163.com

## XPO1 in diffuse large B-cell lymphoma



**Figure 2.** Detection of XPO1 protein expression by immunohistochemistry in DLBCL and reactive lymph node hyperplasia tissues. A: DLBCL tissues; B: Reactive lymph node hyperplasia tissues. Annotation: DLBCL, diffuse large B-cell lymphoma; XPO1, exportin-1.