

Published in final edited form as:

Circulation. 2020 August 18; 142(7): 621–642. doi:10.1161/CIRCULATIONAHA.120.046361.

Carotid intima-media thickness progression as surrogate marker for cardiovascular risk: Meta-analysis of 119 clinical trials involving 100,667 patients

A full list of authors and affiliations appears at the end of the article.

Abstract

Background—To quantify the association between effects of interventions on carotid intima-media thickness (cIMT) progression and their effects on cardiovascular disease (CVD) risk.

Methods—We systematically collated data from randomized controlled trials. cIMT was assessed as the mean value at the common-carotid-artery; if unavailable, the maximum value at the common-carotid-artery or other cIMT measures were utilized. The primary outcome was a combined CVD endpoint defined as myocardial infarction, stroke, revascularization procedures, or fatal CVD. We estimated intervention effects on cIMT progression and incident CVD for each trial, before relating the two using a Bayesian meta-regression approach.

Results—We analyzed data of 119 randomized controlled trials involving 100,667 patients (mean age 62 years, 42% female). Over an average follow-up of 3.7 years, 12,038 patients developed the combined CVD endpoint. Across all interventions, each 10 $\mu\text{m}/\text{year}$ reduction of

Corresponding author: Peter Willeit MD MPhil PhD, Medical University of Innsbruck, Anichstraße 35, 6020 Innsbruck, Austria, Tel: +43 512 504-83493, Fax: +43 50 504-23852, peter.willeit@i-med.ac.at.

* Authors contributed equally to this article.

† Authors contributed equally to this article.

Conflict of Interest Disclosures

P. Willeit reports grants from the German Research Foundation DFG, the Austrian Science Fund FWF, the Austrian Research Promotion Agency FFG and the Dr.-Johannes-and-Hertha-Tuba Foundation during the conduct of the study. L. Tschiederer reports grants from the Dr.-Johannes-and-Hertha-Tuba Foundation during the conduct of the study and non-financial support from Sanofi outside the submitted work. E. Allara was supported by a National Institute for Health Research PhD studentship (NIHR BTRU-2014-10024) during the conduct of this study and reports support from EU/EFPIA Innovative Medicines Initiative Joint Undertaking BigData@Heart grant n° 116074 outside the submitted work. L. Seekircher reports non-financial support from Sanofi outside the submitted work. H.C. Gerstein reports grants from Sanofi, Eli Lilly, Astra Zeneca, Boehringer Ingelheim, Novo Nordisk, Merck, and Abbott, and personal fees from Sanofi, Eli Lilly, Astra Zeneca, Boehringer Ingelheim, Abbott, Novo Nordisk, Merck, Janssen, Kowa Research Institute, and Cirius outside the submitted work. E. Stroes reports Lecturing/ad-boards fees paid to institution by Amgen, Sanofi-Regeneron, Novartis, Athera, Mylan unrelated to the present work. K. Kapellas reports grants from the National Health and Medical Research Council during the conduct of the study. M. Skilton reports grants from the National Health and Medical Research Council of Australia during the conduct of the study. M.G.A. van Vonderen reports grants from Abbott International and Boehringer Ingelheim during the conduct of the study. S. Kiechl reports grants from the Austrian Promotion Agency FFG outside the submitted work. G. Klingenschmid reports non-financial support from Sanofi and Pfizer outside the submitted work. S.E. Kjeldsen reports personal fees from Bayer, Merck KGaA, MSD, Sanofi, and Takeda outside the submitted work. M.H. Olsen reports grants from the Novo Nordic Foundation outside the submitted work. N. Sattar reports personal fees from Amgen, AstraZeneca, Boehringer Ingelheim, Eli Lilly, Janssen, NAPP Pharmaceuticals, Novo Nordisk, and Sanofi, and grants from Boehringer Ingelheim outside the submitted work. M.P.C. Grooteman reports grants from the Dutch Kidney Foundation, Fresenius Medical Care Netherlands BV, Gambro Sweden, the Twiss Fund, and ZON MW during the conduct of the study. P.J. Blankestijn reports grants from the European Commission and other financial activities from Medtronic, Baxter, and Braun outside the submitted work. M.L. Bots reports grants from AstraZeneca outside the submitted work. M.J. Sweeting reports grants from the German Research Foundation during the conduct of the study. S.G. Thompson reports grants from the UK Medical Research Council, the British Heart Foundation, and the German Research Foundation DFG during the conduct of the study. M.W. Lorenz reports grants from the German Research Foundation DFG during the conduct of the study. Other authors have no conflicts of interests.

cIMT progression resulted in a relative risk for CVD of 0.91 (95% credible interval 0.87-0.94), with an additional relative risk for CVD of 0.92 (0.87-0.97) being achieved independent of cIMT progression. Taken together, we estimated that interventions reducing cIMT progression by 10, 20, 30, or 40 $\mu\text{m}/\text{year}$ would yield relative risks of 0.84 (0.75-0.93), 0.76 (0.67-0.85), 0.69 (0.59-0.79), or 0.63 (0.52-0.74). Results were similar when grouping trials by type of intervention, time of conduct, time to ultrasound follow-up, availability of individual-participant data, primary vs. secondary prevention trials, type of cIMT measurement, and proportion of female patients.

Conclusions—The extent of intervention effects on cIMT progression predicted the degree of CVD risk reduction. This provides a missing link supporting the usefulness of cIMT progression as a surrogate marker for CVD risk in clinical trials.

Keywords

Intima-media thickness; Cardiovascular disease; Surrogate marker; Clinical trials; Meta-analysis

Introduction

Carotid intima-media thickness (cIMT), the thickness of the intimal and medial layer of the carotid artery wall, can be measured non-invasively using ultrasound imaging and is considered a marker for the early stage of atherosclerosis.¹ Mean values of cIMT in adults range around 650-900 μm and increase – on average – at a rate of 0-40 $\mu\text{m}/\text{year}$.^{2,3} A large number of randomized controlled trials (RCTs) have demonstrated that therapeutic interventions may slow progression of cIMT. However, it is uncertain whether effects on cIMT progression translate into reduced risk of cardiovascular disease (CVD) events, that is whether cIMT progression is a valid surrogate marker for CVD.

In 2005, Espeland *et al.* first proposed cIMT progression as a surrogate marker for CVD risk based on findings in seven statin trials,⁴ but their arguments were based on limited data and most researchers were reluctant to rely on cIMT results alone.⁵ In 2009, ARBITER-6 HALTS was the first RCT to be terminated early based on findings for cIMT progression, showing superiority of extended-release niacin over ezetimibe.⁶ This decision was controversial due to the uncertain validity of the rate of progression of cIMT as a surrogate marker for clinical endpoints.^{7,8} Two subsequent literature-based meta-regression analyses on this topic have yielded conflicting results: Goldberger *et al.*⁹ observed an association of effects on cIMT progression and risk of myocardial infarction, whereas Costanzo *et al.*¹⁰ found no statistically significant association of changes in mean or maximal cIMT with risk of myocardial infarction or stroke. Both of these meta-analyses have been criticized because of methodological flaws.¹¹

To address this uncertainty, we conducted a comprehensive analysis of 119 RCTs involving a total of 100,667 patients. Our aims were to: (i) quantify the reduction in CVD risk associated with reducing cIMT progression by therapeutic intervention; (ii) explore cIMT progression as a surrogate marker for different types of CVD endpoints as well as all-cause mortality; and (iii) investigate differences according to the intervention type, method of cIMT assessment, and other trial characteristics.

Methods

The datasets supporting the conclusions of this article are not made publicly available due to legal restrictions arising from the data distribution policy of the PROG-IMT/Proof-ATHERO collaborations and from the bilateral agreements between the consortium's coordinating center and participating studies, but they may be requested directly from individual study investigators. Studies that shared individual-participant data have obtained informed consent of the study participants and ethical approval by their respective institutional review boards.

The report of the results of our study adhere to the PRISMA-IPD guidelines (Table I in the Supplement); the objectives and statistical methods in this paper have been described previously¹². We identified relevant RCTs published before 3 February 2020 through systematic searches of ten medical knowledge databases, six clinical trial registries, and reference lists of relevant publications and reviews (Table II in the Supplement). Trials were eligible for inclusion if they: (1) had assigned patients randomly to two or more arms; (2) had applied well-defined inclusion criteria; (3) had measured cIMT at trial baseline and at one or more follow-up visits; and (4) had recorded incident CVD outcomes. We requested anonymized patient-level data from these trials, performed comprehensive plausibility checks, and were able to resolve any data-related queries through direct correspondence with trial investigators. For trials for which patient-level data was unavailable, four authors (PW, LT, EA, MWL) independently extracted the relevant data from the published literature and resolved any discrepancies by consensus.

As a measure of cIMT, we gave preference to assessments of mean values at the common-carotid-artery. If unavailable, we used maximum values at the common-carotid-artery or cIMT at other sections of the carotid artery instead. In trials quantifying cIMT values at different sites (i.e. left or right side, near or far vessel wall, or at different insonation angles), the arithmetic mean of these measurements was used. The primary outcome was a combined CVD endpoint defined as myocardial infarction, stroke, revascularization procedures (e.g. coronary or carotid revascularization), or fatal CVD. For trials without data on cause-specific death, all-cause mortality was included in the primary outcome instead. Table III in the Supplement provides details on the assessment of cIMT progression and primary outcome definition in each trial.

Statistical analysis

We conducted analyses according to a pre-specified analysis plan. For factorial trials, we analyzed the intervention contrast anticipated to have the greatest effect on CVD risk. For trials with more than two trial arms, we compared the arm that was – based on prior trials – anticipated to have the greatest effect to the arm anticipated to have the least effect (or no effect in case of placebo). For all trials, the latter group was used as reference.

The principal analysis consisted of three steps. First, we quantified intervention effects on cIMT progression. For each trial for which patient-level data was available, we used a linear mixed model to estimate the difference in yearly cIMT progression between trial arms. The model included fixed effects for assigned treatment, time in study, and the interaction of the two, plus an intercept and time variable allowed to vary randomly at the patient level. For

each trial for which literature-based data was available (i.e. tabular data extracted from the trials' publications), we annualized differences in cIMT progression and calculated standard errors from *P* values, if necessary.

Second, we quantified intervention effects on the CVD outcome. For each trial with patient-level data, we fitted a Cox proportional-hazards model to estimate the log hazard ratio and its standard error comparing the trial arms. If estimates were inestimable due to a low event number, we applied an augmentation procedure to allow incorporation of the trial in the meta-analysis.¹³ For each trial with literature-based data, we calculated the log risk ratio and its standard error based on the number of events and patients in each trial arm. For trials in which one arm had zero events, the number of events and non-events were each augmented by +0.5 in both trial arms. Hazard ratios and risk ratios are collectively described as measures of relative risk (RR).

Third, to test whether effects on CVD risk depended on effects on cIMT progression, we used a Bayesian meta-regression approach that models both effects simultaneously, while taking into account the estimated precisions in these two effects.¹⁴ The principal analysis involved (i) a model with an intercept of zero (i.e. forcing the regression line through the origin and thereby assuming that all the effects on CVD risk operate through cIMT progression) and (ii) a model with a non-zero intercept (i.e. allowing for an effect on CVD risk independent of cIMT progression). The meta-regression also took into account the within-study correlation of the two effects, which was estimated using bootstrapping in the trials with patient-level data and >30 events.¹⁵ For other trials, an overall correlation coefficient pooled using random-effects meta-analysis was used instead. Further details on methods for assessing surrogacy are provided in the Methods in the Supplement.

Subsidiary analyses evaluated surrogacy for individual disease endpoints and in trials grouped by intervention type, time of conduct, time to ultrasound follow-up, availability of individual-participant data, primary vs. secondary prevention trials, type of cIMT measure, and proportion of female patients. A Bayesian approach was taken for estimation of the meta-regression model parameters and for prediction (for details, see the Methods in the Supplement). Analyses were performed using Stata 15, R 2.5.1 and JAGS 4.3.0. PW had full access to all the data in the study and takes responsibility for the integrity of the data and the accuracy of the data analysis.

Results

Among 10,260 articles screened, we identified 119 trials involving 100,667 patients that met the pre-specified inclusion criteria (Figure I in the Supplement). 103 trials (87%) had two arms, seven had three arms, one had four arms, seven had a 2x2 factorial design, and one had a 3x2 factorial design (Table 1). The trials employed antidiabetic (18 trials), antihypertensive (19 trials), dietary/vitamin (20 trials), lipid-lowering (33 trials), and/or other interventions (37 trials). Mean age at baseline was 62 years (standard deviation 8); 42% were female. Over an average follow-up duration of 3.7 years, 12,038 patients developed the primary CVD endpoint. The median proportion of patients with repeat cIMT measurements across trials was 90%. Seven large cardiovascular outcome trials had

measured cIMT only in a subset of patients (Table 1). Mean cIMT measured at the common-carotid-artery was available in 91 trials, maximum cIMT at the common-carotid-artery in 49 trials, and other cIMT measures in 11 trials. Across contributing trials, the mean rate of cIMT progression was +9.1 $\mu\text{m}/\text{year}$ (95% confidence interval: 7.1 to 11.1) in control arms and +1.0 $\mu\text{m}/\text{year}$ (-0.6 to 2.7) in interventions arms. Across all contributing trials, the RR for CVD with intervention was 0.88 (0.83-0.92).

Results of the principal analysis are provided in Figure 1. Across all interventions, in the model assuming an intercept of zero, each 10 $\mu\text{m}/\text{year}$ reduction of cIMT progression was associated with a RR for CVD of 0.88 (95% credible interval [CrI] 0.85-0.91). In the model allowing for a non-zero intercept, the RR for CVD was 0.91 (0.87-0.94) per 10 $\mu\text{m}/\text{year}$ slower cIMT progression, with a further RR of 0.92 (0.87-0.97) achieved independent of cIMT progression. Based on the non-zero intercept model, the proportion of variance in the CVD outcome explained by cIMT progression was 98% albeit with a wide 95% CrI (71-100%). Taken together, we estimated that interventions that reduce cIMT progression by 10, 20, 30, or 40 $\mu\text{m}/\text{year}$ would yield RRs of 0.84 (0.75-0.93), 0.76 (0.67-0.85), 0.69 (0.59-0.79), or 0.63 (0.52-0.74).

Due to presence of effects on CVD risk unexplained by cIMT progression, subsequent analyses focused on the non-zero intercept model. In outcome-specific analyses (Figure 2), RRs per 10 $\mu\text{m}/\text{year}$ slower cIMT progression were 0.88 (0.82-0.94) for myocardial infarction, 0.92 (0.86-1.00) for stroke, 0.90 (0.83-0.98) for revascularization procedures, 0.91 (0.83-1.01) for fatal CVD, and 0.96 (0.89-1.04) for all-cause mortality. There was no evidence for differences in the RR for CVD associated with slower cIMT progression nor in the intercept across trials grouped by intervention type (Figure 3 and Figure 4). Similarly, there was no evidence for differences in these RRs in trials grouped by time of conduct, time to ultrasound follow-up, availability of individual-participant data, primary vs. secondary prevention trials, type of cIMT measurements, and proportion of female patients (Figure 4, *P* values for heterogeneity >0.05). In a sensitivity analysis that omitted trials with extreme effect sizes (i.e. cIMT progression changes >80 $\mu\text{m}/\text{year}$ or RR for CVD <0.25 or >4.0), the RR for CVD per 10 $\mu\text{m}/\text{year}$ slower cIMT progression was 0.91 (0.87-0.95). Results were also highly robust across leave-one-out cross-validation analyses (Figure II in the Supplement). Trial-specific estimates are provided in Table IV in the Supplement.

Discussion

In this large-scale meta-analysis involving data from 119 RCTs and 100,667 patients, we showed that interventions reducing cIMT progression are also likely to reduce CVD event rates (summarized in Figure 5). Specifically, a 10 $\mu\text{m}/\text{year}$ slower cIMT progression was associated with a RR of 0.91 (95% CrI 0.87-0.94) for the principal outcome of CVD, with the differences in RR for CVD largely explained by the differences in cIMT progression. The same model also indicated a non-zero intercept, overall and for different types of interventions, highlighting that a small but significant proportion of the intervention effect acted independently of cIMT progression. By estimating CVD risk reductions according to specific reductions in cIMT progression, we provide guidance to future trials in the cardiovascular field.⁵ Results were robust for a range of disease endpoints and across

clinically important trial characteristics, including type of intervention or type of cIMT measurement.

Exploring the association between cIMT and CVD risk has some history. cIMT measured at a single time-point is associated with incident CVD and provides incremental predictive value over and beyond conventional CVD risk factors.^{190–192} For cIMT progression over time, our earlier analyses of observational studies within the PROG-IMT collaboration indicated no statistically significant association with subsequent CVD risk in individuals of the general population,² patients with diabetes mellitus,¹⁹³ or patients at high CVD risk¹⁹⁴. This null association could be explained by the challenges of precisely estimating cIMT progression in individuals over time. In contrast, our present report focuses on groups of patients in RCTs and is therefore better suited to provide answers about the surrogate value of cIMT progression: averaging across patients improves the signal-to-noise ratio, confounders are expected to be balanced due to randomization, trial cohorts might be more homogeneous, and cIMT protocols may be of higher quality in clinical trial settings.

Prior RCT data on cIMT progression as a surrogate marker for CVD risk are limited. Because most RCTs reporting both cIMT and endpoints (with few exceptions^{63,70,97,127,170}) have not been designed as CVD outcome trials and as a range of intervention effect sizes is needed for meaningful results, meta-analysis is the method of choice to investigate this question.¹⁹⁵ Three such pooled analyses had been undertaken before. Espeland *et al.* demonstrated that statin treatment reduced cIMT progression and CVD risk in a concordant manner.⁴ In a meta-analysis involving 28 RCTs of different intervention types, Goldberger *et al.* observed an association between reduced cIMT progression and lower risk for non-fatal myocardial infarction, but noted marked between-trials heterogeneity.⁹ A meta-analysis by Costanzo *et al.* involving 41 RCTs demonstrated no statistically significant relationship between slower cIMT progression and risk of cardiovascular outcomes.¹⁰ Compared to these earlier reports, our meta-analysis stands out by (i) exclusively conducting within-trial comparison (thereby upholding the principle of randomization); (ii) increasing statistical power by involving >5 times as many patients as the previously largest report¹⁰; (iii) enhancing validity by accessing patient-level data of 28 trials; and (iv) using modern statistical methods that incorporate uncertainties both around the intervention effects on cIMT progression and CVD risk as well as their within-trial correlation.

What do we know about the suitability of cIMT progression as a surrogate marker for CVD risk? Ultrasound-based cIMT measurement fulfills several requirements of a surrogate marker,¹⁹⁶ including (i) high correlation with thickness of the vessel wall measured in histological samples¹⁹⁷; (ii) acceptable reproducibility¹⁹⁸, which was further enhanced by clear recommendations for measurement and technical improvements¹⁹⁹; (iii) close correlation with risk factors and prevalent CVD^{190–192}; (iv) established correlation with atherosclerosis in other vascular beds¹⁹⁶; (v) association with occurrence of clinical events^{190–192}; (vi) the ability to change over time^{2,193}; and (vii) the possibility to influence cIMT with interventions²⁰⁰. In the present analysis, we have provided evidence for the last missing requirement not credibly proven by earlier studies, namely that a change in cIMT progression is related to the change in risk of CVD events.

Importantly, using cIMT progression as a surrogate endpoint in future RCTs may facilitate and speed up development and licensing of new therapies. To illustrate this point, we conducted a sample size calculation for a hypothetical future trial. For this calculation, we assumed 80% power, several parameters similar to our individual-participant data (i.e. 2-year cumulative incidence of CVD 6.57%, a standard deviation of cIMT 178 μm , and a correlation between baseline and follow-up cIMT 0.79), no losses to follow-up, and a perfect relationship between treatment effects on cIMT progression and those on the CVD outcome. To have 80% power to detect a hazard ratio of 0.84, a future 2-year CVD outcome trial would require 8,600 patients in each trial arm. In comparison, a future 2-year cIMT progression trial would require 470 patients per trial arm to detect a 10 $\mu\text{m}/\text{year}$ reduction in cIMT progression (corresponding to the above hazard ratio) at 2-years, also with a power of 80%. Consequently, a cIMT trial would only require 5.5% of the sample size of a comparable CVD endpoint trial.

In addition to demonstrating the association between intervention effects on cIMT and intervention effects on CVD risk, we found that the regression line had a small but significant non-zero intercept, in the overall analysis and in all subgroups of trials investigated. The non-zero intercept – which indicates that a small proportion of the intervention effect on CVD risk bypasses cIMT – may be explained by “pleiotropic” effects; meaning that the intervention influences the clinical endpoint via multiple pathways. While effects of interventions on the extent of atherosclerosis may be captured by cIMT progression, any effects on other pathophysiological mechanisms related to CVD events, such as endogenous thrombogenesis and fibrinolysis,¹ may bypass cIMT progression and thereby lead to a non-zero intercept. Alternative pathways have been described for many major cardiovascular substance groups, including lipid-lowering medications (e.g. statins, 1,201,202 fibrates,²⁰³ niacin,²⁰⁴ resins,²⁰⁵ and omega-3 fatty acids²⁰⁶), antidiabetic medications (e.g. AMPK activators,²⁰⁷ thiazolidinediones,²⁰⁷ DPP-4 inhibitors,^{207,208} GLP-1 receptor agonists,^{207,208} SGLT-2 inhibitors²⁰⁸), or antihypertensive medications (e.g. beta-blockers,²⁰⁹ calcium channel-inhibitors,^{210,211} angiotensin-II antagonists,²¹² ACE inhibitors²¹²). Nevertheless, this finding does not negate the main result that an intervention effect on cIMT predicts the effect on CVD risk.

A major strength of our study is that we systematically collated and analyzed worldwide data on cIMT progression and CVD outcomes published up to February 2020. Access to patient-level data allowed us to include hitherto unpublished data and thereby reduce publication bias. Supplementing our analysis with published data enhanced generalizability and statistical power. Strengths of our meta-regression analysis include that it upholds randomization within trials, allows for between-trials heterogeneity, makes no distributional assumption about the true intervention effects on cIMT progression across trials (unlike standard bivariate random-effects meta-analysis), and improved precision by incorporating within-trial correlations of intervention effects on cIMT progression and CVD risk.

Our analysis also has limitations. First, our principal analysis combined trials of varying types of interventions. While we conducted a sensitivity analysis by medication class, further research is required to precisely quantify the differences in the surrogate value of cIMT by intervention type. Second, our analysis involved a broad range of types of trial

populations. While sensitivity analysis revealed no evidence for differential effects in the setting of primary vs. secondary prevention trials, further study is needed on specific trial populations, such as patients with diabetes or chronic kidney disease. Third, the definition of the primary combined CVD endpoint varied across the included trials. However, the differences were relatively minor (see Table III in the Supplement), so we are confident that this does not constitute a major source of systematic bias. Finally, while ultrasound scanning protocols may have differed across contributing trials – in particular before consensus guidelines were available²¹³, there was no evidence for effect modification by type of cIMT measure or baseline years of the trials.

Conclusions

In conclusion, effects of interventions on cIMT progression and on CVD risk are associated, endorsing the usefulness of cIMT progression as a surrogate marker in clinical trials. Using cIMT progression as a surrogate marker may be a useful tool to guide future development for cardiovascular drugs.

Supplementary Material

Refer to Web version on PubMed Central for supplementary material.

Authors

Peter Willeit, MD, MPhil, PhD^{1,2,*}, Lena Tschiderer, DI, BSc, PhD^{1,*}, Elias Allara, MD^{2,3}, Kathrin Reuber, MSc⁴, Lisa Seekircher, DI, Mag., BSc¹, Lu Gao, BSc, MSc⁵, Ximing Liao, BSc, MSc, PhD⁴, Eva Lonn, MD, MSc, FRCPC, FACC^{6,7}, Hertz C. Gerstein, MD, MSc, FRCPC^{6,7}, Salim Yusuf, MD, DPhil, MRCP^{6,7}, Frank P. Brouwers, MD, PhD⁸, Folkert W. Asselbergs, MD, PhD⁹, Wiek van Gilst, PhD¹⁰, Sigmund A. Anderssen, PhD¹¹, Diederick E. Grobbee, MD, PhD¹², John J. P. Kastelein, MD, PhD, FESC¹³, Frank L. J. Visseren, MD¹⁴, George Ntaios, MD, MSc, PhD, FESO¹⁵, Apostolos I. Hatzitolios, MD, PhD, FESH¹⁶, Christos Savopoulos, MD, PhD¹⁶, Pythia T. Nieuwkerk, PhD¹⁷, Erik Stroes, MD, PhD¹³, Matthew Walters, MD, FRCP¹⁸, Peter Higgins, MD, MRCP¹⁹, Jesse Dawson, MD, FRCP, FESO¹⁹, Paolo Gesele, MD, PhD²⁰, Giuseppe Guglielmini, PhD²⁰, Rino Migliacci, MD, PhD²¹, Marat Ezhov, MD, PhD²², Maya Safarova, MD²³, Tatyana Balakhonova, MD, PhD²⁴, Eiichi Sato, MD²⁵, Mayuko Amaha, MD²⁵, Tsukasa Nakamura, MD, PhD²⁵, Kostas Kapellias, PhD²⁶, Lisa M. Jamieson, PhD²⁶, Michael Skilton, PhD²⁷, James A. Blumenthal, PhD²⁸, Alan Hinderliter, MD²⁹, Andrew Sherwood, PhD²⁸, Patrick J. Smith, PhD, MPH²⁸, Michiel A. van Agtmael, MD, PhD³⁰, Peter Reiss, MD, PhD^{31,32}, Marit G. A. van Vonderen, MD, PhD³³, Stefan Kiechl, MD^{1,34}, Gerhard Klingenschmid, MD¹, Matthias Sitzer, MD^{4,35}, Coen D. A. Stehouwer, MD, PhD, FESC³⁶, Heiko Uthoff, MD, PD³⁷, Zhi-Yong Zou, MD³⁸, Ana R. Cunha, PhD³⁹, Mario F. Neves, MD, PhD³⁹, Miles D. Witham, BMBCh, PhD⁴⁰, Hyun-Woong Park, MD⁴¹, Moo-Sik Lee, MD, PhD^{41,42}, Jang-Ho Bae, MD, FACC^{43,44}, Enrique Bernal, MD, PhD⁴⁵, Kristian Wachtell, MD, PhD, DrMedSci⁴⁶, Sverre E. Kjeldsen, MD, PhD⁴⁶, Michael H. Olsen, MD, PhD, DMSc⁴⁷, David Preiss, PhD, FRCPATH, MRCP⁴⁸, Naveed Sattar, MD, PhD⁴⁹, Edith Beishuizen, MD⁵⁰, Menno V. Huisman,

MD, PhD⁵¹, Mark A. Espeland, PhD⁵², Caroline Schmidt, PhD⁵³, Stefan Agewall, MD, PhD⁵⁴, Ercan Ok, MD⁵⁵, Gülay A. çi, MD⁵⁵, Eric de Groot, MD, PhD⁵⁶, Muriel P. C. Grooteman, MD, PhD⁵⁷, Peter J. Blankestijn, MD⁵⁸, Michiel L. Bots, MD, PhD¹², Michael J. Sweeting, PhD^{2,59,†}, Simon G. Thompson, DSc^{2,†}, Matthias W. Lorenz, MD, PD^{4,†} **on behalf of the PROG-IMT and the Proof-ATHERO Study Groups**

Affiliations

¹Department of Neurology, Medical University of Innsbruck, Innsbruck, Austria
²Department of Public Health and Primary Care, University of Cambridge, Cambridge, UK ³National Institute for Health Research Blood and Transplant Research Unit in Donor Health and Genomics, University of Cambridge, Cambridge, UK ⁴Department of Neurology, Goethe University, Frankfurt am Main, Germany
⁵MRC Biostatistics Unit, University of Cambridge, Cambridge, UK ⁶Department of Medicine and Population Health Research Institute, McMaster University, Hamilton, Ontario, Canada ⁷Hamilton General Hospital, Hamilton, Ontario, Canada
⁸Department of Cardiology, Haga Teaching Hospital, the Hague, the Netherlands
⁹Department of Cardiology, University Medical Center Utrecht, Utrecht, the Netherlands ¹⁰Department of Experimental Cardiology, University Medical Center Groningen, Groningen, the Netherlands ¹¹Department of Sports Medicine, Norwegian School of Sports Sciences, Oslo, Norway ¹²Julius Center for Health Sciences and Primary Care, University Medical Center Utrecht, Utrecht, the Netherlands
¹³Department of Vascular Medicine, Academic Medical Centre, University of Amsterdam, Amsterdam, the Netherlands ¹⁴Department of Vascular Medicine, University Medical Center Utrecht, Utrecht, the Netherlands ¹⁵Department of Medicine, University of Thessaly, Larissa, Greece ¹⁶1st Propedeutic Department of Internal Medicine, Aristotle University of Thessaloniki, Thessaloniki, Greece
¹⁷Department of Medical Psychology, Amsterdam UMC- Location AMC, Amsterdam, the Netherlands ¹⁸School of Medicine, Dentistry and Nursing, University of Glasgow, Glasgow, UK ¹⁹Institute of Cardiovascular and Medical Sciences, University of Glasgow, Glasgow, UK ²⁰Division of Internal and Cardiovascular Medicine, Department of Medicine, University of Perugia, Perugia, Italy ²¹Division of Internal Medicine, Cortona Hospital, Cortona, Italy ²²Laboratory of Lipid Disorders, National Medical Research Center of Cardiology, Moscow, Russia ²³Atherosclerosis Department, National Medical Research Center of Cardiology, Moscow, Russia
²⁴Ultrasound Vascular Laboratory, National Medical Research Center of Cardiology, Moscow, Russia ²⁵Division of Nephrology, Shinmatsudo Central General Hospital, Chiba, Japan ²⁶Australian Research Centre for Population Oral Health, University of Adelaide, Adelaide, SA, Australia ²⁷Boden Institute of Obesity, Nutrition, Exercise and Eating Disorders, University of Sydney, Sydney, NSW, Australia ²⁸Department of Psychiatry and Behavioral Sciences, Duke University Medical Center, Durham, NC, USA ²⁹Department of Medicine, University of North Carolina, Chapel Hill, NC, USA ³⁰Department of Internal Medicine, Amsterdam UMC, Vrije Universiteit, Amsterdam, the Netherlands ³¹Department of Global Health, Amsterdam UMC- Location AMC, Amsterdam, the Netherlands ³²Amsterdam Institute for Global Health and Development, University of Amsterdam, Amsterdam, the Netherlands

³³Department of Internal Medicine, Medical Center Leeuwarden, Leeuwarden, the Netherlands ³⁴VASCage GmbH, Research Centre on Vascular Ageing and Stroke, Innsbruck, Austria ³⁵Department of Neurology, Klinikum Herford, Herford, Germany ³⁶Department of Internal Medicine and Cardiovascular Research Institute Maastricht (CARIM), Maastricht University Medical Centre, Maastricht, the Netherlands ³⁷Department of Angiology, University Hospital Basel, Basel, Switzerland ³⁸Institute of Child and Adolescent Health, School of Public Health, Peking University, Beijing, China ³⁹Department of Clinical Medicine, State University of Rio de Janeiro, Rio de Janeiro, Brazil ⁴⁰AGE Research Group, NIHR Newcastle Biomedical Research Centre, Newcastle University and Newcastle-upon-Tyne Hospitals Trust, Newcastle, UK ⁴¹Department of Internal Medicine, Gyeongsang National University Hospital, Daejeon, South Korea ⁴²Department of Preventive Medicine, Konyang University, Jinju, South Korea ⁴³Heart Center, Konyang University Hospital, Daejeon, South Korea ⁴⁴Department of Cardiology, Konyang University College of Medicine, Daejeon, South Korea ⁴⁵Infectious Diseases Unit, Reina Sofia Hospital, Murcia, Spain ⁴⁶Department of Cardiology, Oslo University Hospital, Oslo, Norway ⁴⁷Department of Internal Medicine, Holbaek Hospital, University of Southern Denmark, Odense, Denmark ⁴⁸MRC Population Health Research Unit, Clinical Trial Service Unit, Nuffield Department of Population Health, University of Oxford, Oxford, UK ⁴⁹BHF Glasgow Cardiovascular Research Centre, University of Glasgow, Glasgow, UK ⁵⁰Department of Internal Medicine, HMC+ (Bronovo), the Hague, the Netherlands ⁵¹Department of Thrombosis and Hemostasis, Leiden University Medical Center, Leiden, the Netherlands ⁵²Department of Biostatistical Sciences, Wake Forest School of Medicine, Winston-Salem, NC, USA ⁵³Wallenberg Laboratory for Cardiovascular Research, University of Gothenburg, Gothenburg, Sweden ⁵⁴Oslo University Hospital Ullevål and Institute of Clinical Sciences, University of Oslo, Oslo, Norway ⁵⁵Nephrology Department, Ege University School of Medicine, Bornova-Izmir, Turkey ⁵⁶Imagelabonline & Cardiovascular, Eindhoven and Lunteren, the Netherlands ⁵⁷Department of Nephrology, Amsterdam UMC, Amsterdam, the Netherlands ⁵⁸Department of Nephrology, University Medical Center Utrecht, Utrecht, the Netherlands ⁵⁹Department of Health Sciences, University of Leicester, Leicester, UK

Funding Sources

This work was supported by the Austrian Science Fund (FWF) [P 32488]; the Dr.-Johannes-and-Hertha-Tuba Foundation; the German Research Foundation [DFG Lo 1569/2-1 and DFG Lo 1569/2-3]; and the excellence initiative “Competence Centers for Excellent Technologies” (COMET) of the Austrian Research Promotion Agency (FFG) “Research Center of Excellence in Vascular Ageing: Tyrol, VASCage” [K-Project No. 843536], funded by Bundesministerium für Verkehr, Innovation und Technologie (BMVIT), Bundesministerium für Bildung, Wissenschaft und Forschung (BWF), Wirtschaftsagentur Wien, and Standortagentur Tirol.

Non-standard Abbreviations and Acronyms

CI	credible interval
cIMT	Carotid intima-media thickness

CVD	cardiovascular disease
RCT	randomized controlled trial
RR	relative risk

References

1. Libby P, Ridker PM, Hansson GK. Progress and challenges in translating the biology of atherosclerosis. *Nature*. 2011; 473:317–325. DOI: 10.1038/nature10146 [PubMed: 21593864]
2. Lorenz MW, Polak JF, Kavousi M, Mathiesen EB, Völzke H, Tuomainen T-P, Sander D, Plichart M, Catapano AL, Robertson CM, et al. Carotid intima-media thickness progression to predict cardiovascular events in the general population (the PROG-IMT collaborative project): a meta-analysis of individual participant data. *Lancet*. 2012; 379:2053–2062. DOI: 10.1016/S0140-6736(12)60441-3 [PubMed: 22541275]
3. Willeit P, Thompson SG, Agewall S, Bergström G, Bickel H, Catapano AL, Chien K-L, de Groot E, Empana J-P, Etgen T, et al. Inflammatory markers and extent and progression of early atherosclerosis: Meta-analysis of individual-participant-data from 20 prospective studies of the PROG-IMT collaboration. *Eur J Cardiovasc Prev Rehabil*. 2016; 23:194–205. DOI: 10.1177/2047487314560664
4. Espeland MA, O'Leary DH, Terry JG, Morgan T, Evans G, Mudra H. Carotid intimal-media thickness as a surrogate for cardiovascular disease events in trials of HMG-CoA reductase inhibitors. *Curr Control Trials Cardiovasc Med*. 2005; 6:3.doi: 10.1186/1468-6708-6-3 [PubMed: 15760471]
5. Peters SAE, den Ruijter HM, Grobbee DE, Bots ML. Results from a carotid intima-media thickness trial as a decision tool for launching a large-scale morbidity and mortality trial. *Circ Cardiovasc Imaging*. 2013; 6:20–25. DOI: 10.1161/CIRCIMAGING.112.978114 [PubMed: 23204038]
6. Taylor AJ, Villines TC, Stanek EJ, Devine PJ, Griffen L, Miller M, Weissman NJ, Turco M. Extended-release niacin or ezetimibe and carotid intima-media thickness. *N Engl J Med*. 2009; 361:2113–2122. DOI: 10.1056/NEJMoa0907569 [PubMed: 19915217]
7. Blumenthal RS, Michos ED. The HALTS trial--halting atherosclerosis or halted too early? *N Engl J Med*. 2009; 361:2178–2180. DOI: 10.1056/NEJMe0908838 [PubMed: 19915216]
8. Kastelein JJP, Bots ML. Statin therapy with ezetimibe or niacin in high-risk patients. *N Engl J Med*. 2009; 361:2180–2183. DOI: 10.1056/NEJMe0908841 [PubMed: 19915218]
9. Goldberger ZD, Valle JA, Dandekar VK, Chan PS, Ko DT, Nallamothu BK. Are changes in carotid intima-media thickness related to risk of nonfatal myocardial infarction? A critical review and meta-regression analysis. *Am Heart J*. 2010; 160:701–714. DOI: 10.1016/j.ahj.2010.06.029 [PubMed: 20934565]
10. Costanzo P, Perrone-Filardi P, Vassallo E, Paolillo S, Cesarano P, Brevetti G, Chiariello M. Does carotid intima-media thickness regression predict reduction of cardiovascular events? A meta-analysis of 41 randomized trials. *J Am Coll Cardiol*. 2010; 56:2006–2020. DOI: 10.1016/j.jacc.2010.05.059 [PubMed: 21126642]
11. Bots ML, Taylor AJ, Kastelein JJP, Peters SAE, den Ruijter HM, Tegeler CH, Baldassarre D, Stein JH, O'Leary DH, Revkin JH, et al. Rate of change in carotid intima-media thickness and vascular events: meta-analyses can not solve all the issues. A point of view. *J Hypertens*. 2012; 30:1690–1696. DOI: 10.1097/HJH.0b013e32835644dc [PubMed: 22895014]
12. Lorenz MW, Bickel H, Bots ML, Breteler MMB, Catapano AL, Desvarieux M, Hedblad B, Iglseider B, Johnsen SH, Juraska M, et al. Individual progression of carotid intima media thickness as a surrogate for vascular risk (PROG-IMT): Rationale and design of a meta-analysis project. *Am Heart J*. 2010; 159:730–736.e2. DOI: 10.1016/j.ahj.2010.02.008 [PubMed: 20435179]
13. White IR. Multivariate random-effects meta-analysis. *Stata Journal*. 2009; 9:40–56. DOI: 10.1177/1536867X0900900103

14. Daniels MJ, Hughes MD. Meta-analysis for the evaluation of potential surrogate markers. *Stat Med.* 1997; 16:1965–1982. DOI: 10.1002/(SICI)1097-0258(19970915)16:17<1965::AID-SIM630>3.0.CO;2-M [PubMed: 9304767]
15. Riley RD, Price MJ, Jackson D, Wardle M, Gueyffier F, Wang J, Staessen JA, White IR. Multivariate meta-analysis using individual participant data. *Res Synth Methods.* 2015; 6:157–174. DOI: 10.1002/jrsm.1129 [PubMed: 26099484]
16. The ACAPS Group. Rationale and design for the Asymptomatic Carotid Artery Plaque Study (ACAPS). *Control Clin Trials.* 1992; 13:293–314. DOI: 10.1016/0197-2456(92)90012-o [PubMed: 1330434]
17. Furberg CD, Adams HP, Applegate WB, Byington RP, Espeland MA, Hartwell T, Hunninghake DB, Lefkowitz DS, Probstfield J, Riley WA. Effect of lovastatin on early carotid atherosclerosis and cardiovascular events. Asymptomatic Carotid Artery Progression Study (ACAPS) Research Group. *Circulation.* 1994; 90:1679–1687. DOI: 10.1161/01.CIR.90.4.1679 [PubMed: 7734010]
18. DeFronzo RA, Tripathy D, Schwenke DC, Banerji M, Bray GA, Buchanan TA, Clement SC, Henry RR, Hodis HN, Kitabchi AE, et al. Pioglitazone for diabetes prevention in impaired glucose tolerance. *N Engl J Med.* 2011; 364:1104–1115. DOI: 10.1056/NEJMoa1010949 [PubMed: 21428766]
19. Saremi A, Schwenke DC, Buchanan TA, Hodis HN, Mack WJ, Banerji M, Bray GA, Clement SC, Henry RR, Kitabchi AE, et al. Pioglitazone slows progression of atherosclerosis in prediabetes independent of changes in cardiovascular risk factors. *Arterioscler Thromb Vasc Biol.* 2013; 33:393–399. DOI: 10.1161/ATVBAHA.112.300346 [PubMed: 23175674]
20. Higgins P, Walters MR, Murray HM, McArthur K, McConnachie A, Lees KR, Dawson J. Allopurinol reduces brachial and central blood pressure, and carotid intima-media thickness progression after ischaemic stroke and transient ischaemic attack: a randomised controlled trial. *Heart.* 2014; 100:1085–1092. DOI: 10.1136/heartjnl-2014-305683 [PubMed: 24790069]
21. Orekhov AN, Sobenin IA, Korneev NV, Kirichenko TV, Myasoedova VA, Melnichenko AA, Balcells M, Edelman ER, Bobryshev YV. Anti-atherosclerotic therapy based on botanicals. *Recent Pat Cardiovasc Drug Discov.* 2013; 8:56–66. DOI: 10.2174/18722083113079990008 [PubMed: 23176379]
22. Taylor AJ, Kent SM, Flaherty PJ, Coyle LC, Markwood TT, Vernalis MN. ARBITER: Arterial Biology for the Investigation of the Treatment Effects of Reducing Cholesterol: a randomized trial comparing the effects of atorvastatin and pravastatin on carotid intima medial thickness. *Circulation.* 2002; 106:2055–2060. DOI: 10.1161/01.CIR.0000034508.55617.65 [PubMed: 12379573]
23. Taylor AJ, Sullenberger LE, Lee HJ, Lee JK, Grace KA. Arterial Biology for the Investigation of the Treatment Effects of Reducing Cholesterol (ARBITER) 2: a double-blind, placebo-controlled study of extended-release niacin on atherosclerosis progression in secondary prevention patients treated with statins. *Circulation.* 2004; 110:3512–3517. DOI: 10.1161/01.CIR.0000148955.19792.8D [PubMed: 15537681]
24. Devine PJ, Turco MA, Taylor AJ. Design and rationale of the ARBITER 6 trial (Arterial Biology for the Investigation of the Treatment Effects of Reducing Cholesterol)-6-HDL and LDL Treatment Strategies in Atherosclerosis (HALTS). *Cardiovasc Drugs Ther.* 2007; 21:221–225. DOI: 10.1007/s10557-007-6020-8 [PubMed: 17404825]
25. Villines TC, Stanek EJ, Devine PJ, Turco M, Miller M, Weissman NJ, Griffen L, Taylor AJ. The ARBITER 6-HALTS Trial (Arterial Biology for the Investigation of the Treatment Effects of Reducing Cholesterol 6-HDL and LDL Treatment Strategies in Atherosclerosis): final results and the impact of medication adherence, dose, and treatment duration. *J Am Coll Cardiol.* 2010; 55:2721–2726. DOI: 10.1016/j.jacc.2010.03.017 [PubMed: 20399059]
26. Laurent S, Boutouyrie P. Dose-dependent arterial destiffening and inward remodeling after olmesartan in hypertensives with metabolic syndrome. *Hypertension.* 2014; 64:709–716. DOI: 10.1161/HYPERTENSIONAHA.114.03282 [PubMed: 25001274]
27. Salonen JT, Nyyssönen K, Salonen R, Lakka HM, Kaikkonen J, Porkkala-Sarataho E, Voutilainen S, Lakka TA, Rissanen T, Leskinen L, et al. Antioxidant Supplementation in Atherosclerosis Prevention (ASAP) study: a randomized trial of the effect of vitamins E and C on 3-year

- progression of carotid atherosclerosis. *J Intern Med.* 2000; 248:377–386. DOI: 10.1046/j.1365-2796.2000.00752.x [PubMed: 11123502]
28. Rissanen T, Voutilainen S, Nyyssönen K, Salonen R, Salonen JT. Low plasma lycopene concentration is associated with increased intima-media thickness of the carotid artery wall. *Arterioscler Thromb Vasc Biol.* 2000; 20:2677–2681. DOI: 10.1161/01.ATV.20.12.2677 [PubMed: 11116071]
 29. Salonen RM, Nyyssönen K, Kaikkonen J, Porkkala-Sarataho E, Voutilainen S, Rissanen TH, Tuomainen T-P, Valkonen V-P, Ristonmaa U, Lakka H-M, et al. Six-year effect of combined vitamin C and E supplementation on atherosclerotic progression: the Antioxidant Supplementation in Atherosclerosis Prevention (ASAP) Study. *Circulation.* 2003; 107:947–953. DOI: 10.1161/01.CIR.0000050626.25057.51 [PubMed: 12600905]
 30. Smilde TJ, Trip MD, Wollersheim H, van Wissen S, Kastelein JJ, Stalenhoef AF. Rationale, Design and Baseline Characteristics of a Clinical Trial Comparing the Effects of Robust vs Conventional Cholesterol Lowering and Intima Media Thickness in Patients with Familial Hypercholesterolaemia : The Atorvastatin versus Simvastatin on Atherosclerosis Progression (ASAP) Study. *Clin Drug Investig.* 2000; 20:67–79. DOI: 10.2165/00044011-200020020-00001
 31. Smilde TJ, van Wissen S, Wollersheim H, Trip MD, Kastelein JJ, Stalenhoef AF. Effect of aggressive versus conventional lipid lowering on atherosclerosis progression in familial hypercholesterolaemia (ASAP): a prospective, randomised, double-blind trial. *Lancet.* 2001; 357:577–581. DOI: 10.1016/S0140-6736(00)04053-8 [PubMed: 11558482]
 32. Zoungas S, McGrath BP, Branley P, Kerr PG, Muske C, Wolfe R, Atkins RC, Nicholls K, Fraenkel M, Hutchison BG, et al. Cardiovascular morbidity and mortality in the Atherosclerosis and Folic Acid Supplementation Trial (ASFAST) in chronic renal failure: a multicenter, randomized, controlled trial. *J Am Coll Cardiol.* 2006; 47:1108–1116. DOI: 10.1016/j.jacc.2005.10.064 [PubMed: 16545638]
 33. Nanayakkara PWB, van Guldener C, ter Wee PM, Scheffer PG, van Ittersum FJ, Twisk JW, Teerlink T, van Dorp W, Stehouwer CDA. Effect of a treatment strategy consisting of pravastatin, vitamin E, and homocysteine lowering on carotid intima-media thickness, endothelial function, and renal function in patients with mild to moderate chronic kidney disease: results from the Anti-Oxidant Therapy in Chronic Renal Insufficiency (ATIC) Study. *Arch Intern Med.* 2007; 167:1262–1270. DOI: 10.1001/archinte.167.12.1262 [PubMed: 17592099]
 34. Nanayakkara PWB, Teerlink T, Stehouwer CDA, Allajar D, Spijkerman A, Schalkwijk C, ter Wee PM, van Guldener C. Plasma asymmetric dimethylarginine (ADMA) concentration is independently associated with carotid intima-media thickness and plasma soluble vascular cell adhesion molecule-1 (sVCAM-1) concentration in patients with mild-to-moderate renal failure. *Kidney Int.* 2005; 68:2230–2236. DOI: 10.1111/j.1523-1755.2005.00680.x [PubMed: 16221223]
 35. Ahn CM, Hong SJ, Park JH, Kim JS, Lim D-S. Cilostazol reduces the progression of carotid intima-media thickness without increasing the risk of bleeding in patients with acute coronary syndrome during a 2-year follow-up. *Heart Vessels.* 2011; 26:502–510. DOI: 10.1007/s00380-010-0093-1 [PubMed: 21153029]
 36. Jalal DI, Decker E, Perrenoud L, Nowak KL, Bispham N, Mehta T, Smits G, You Z, Seals D, Chonchol M, et al. Vascular Function and Uric Acid-Lowering in Stage 3 CKD. *J Am Soc Nephrol.* 2017; 28:943–952. DOI: 10.1681/ASN.2016050521 [PubMed: 27620990]
 37. Andrews ES, Perrenoud L, Nowak KL, You Z, Pasch A, Chonchol M, Kendrick J, Jalal D. Examining the effects of uric acid-lowering on markers vascular of calcification and CKD-MBD; A post-hoc analysis of a randomized clinical trial. *PLoS ONE.* 2018; 13:e0205831.doi: 10.1371/journal.pone.0205831 [PubMed: 30356327]
 38. Hedblad B, Wikstrand J, Janzon L, Wedel H, Berglund G. Low-dose metoprolol CR/XL and fluvastatin slow progression of carotid intima-media thickness: Main results from the Beta-Blocker Cholesterol-Lowering Asymptomatic Plaque Study (BCAPS). *Circulation.* 2001; 103:1721–1726. DOI: 10.1161/01.CIR.103.13.1721 [PubMed: 11282901]
 39. Bae J-H, Bassenge E, Kim K-Y, Synn Y-C, Park K-R, Schwemmer M. Effects of low-dose atorvastatin on vascular responses in patients undergoing percutaneous coronary intervention with stenting. *J Cardiovasc Pharmacol Ther.* 2004; 9:185–192. DOI: 10.1177/107424840400900306 [PubMed: 15378139]

40. Hodis HN, Mack WJ, Dustin L, Mahrer PR, Azen SP, Detrano R, Selhub J, Alaupovic P, Liu C-r, Liu C-h, et al. High-dose B vitamin supplementation and progression of subclinical atherosclerosis: a randomized controlled trial. *Stroke*. 2009; 40:730–736. DOI: 10.1161/STROKEAHA.108.526798 [PubMed: 19118243]
41. Mercuri M, Bond MG, Sirtori CR, Veglia F, Crepaldi G, Feruglio FS, Descovich G, Ricci G, Rubba P, Mancini M, et al. Pravastatin reduces carotid intima-media thickness progression in an asymptomatic hypercholesterolemic mediterranean population: the Carotid Atherosclerosis Italian Ultrasound Study. *Am J Med*. 1996; 101:627–634. DOI: 10.1016/S0002-9343(96)00333-6 [PubMed: 9003110]
42. Preiss D, Lloyd SM, Ford I, McMurray JJ, Holman RR, Welsh P, Fisher M, Packard CJ, Sattar N. Metformin for non-diabetic patients with coronary heart disease (the CAMERA study): a randomised controlled trial. *Lancet Diabetes Endocrinol*. 2014; 2:116–124. DOI: 10.1016/S2213-8587(13)70152-9 [PubMed: 24622715]
43. Hong S, Nam M, Little BB, Paik S, Lee K, Woo J, Kim D, Kang J, Chun M, Park Y. Randomized control trial comparing the effect of cilostazol and aspirin on changes in carotid intima-medial thickness. *Heart Vessels*. 2019; 34:1758–1768. DOI: 10.1007/s00380-019-01421-1 [PubMed: 31056733]
44. Meuwese MC, de Groot E, Duivenvoorden R, Trip MD, Ose L, Maritz FJ, Basart DCG, Kastelein JJP, Habib R, Davidson MH, et al. ACAT inhibition and progression of carotid atherosclerosis in patients with familial hypercholesterolemia: the CAPTIVATE randomized trial. *JAMA*. 2009; 301:1131–1139. DOI: 10.1001/jama.301.11.1131 [PubMed: 19293413]
45. Beishuizen ED, van de Ree MA, Jukema JW, Tamsma JT, van der Vijver JCM, Meinders AE, Putter H, Huisman MV. Two-year statin therapy does not alter the progression of intima-media thickness in patients with type 2 diabetes without manifest cardiovascular disease. *Diabetes Care*. 2004; 27:2887–2892. DOI: 10.2337/diacare.27.12.2887 [PubMed: 15562202]
46. Mazzone T, Meyer PM, Feinsein SB, Davidson MH, Kondos GT, D'Agostino RB, Perez A, Provost J-C, Haffner SM. Effect of pioglitazone compared with glimepiride on carotid intima-media thickness in type 2 diabetes: a randomized trial. *JAMA*. 2006; 296:2572–2581. DOI: 10.1001/jama.296.21.joc60158 [PubMed: 17101640]
47. Lundby-Christensen L, Tarnow L, Boesgaard TW, Lund SS, Wiinberg N, Perrild H, Krarup T, Snorgaard O, Gade-Rasmussen B, Thorsteinsson B, et al. Metformin versus placebo in combination with insulin analogues in patients with type 2 diabetes mellitus-the randomised, blinded Copenhagen Insulin and Metformin Therapy (CIMT) trial. *BMJ Open*. 2016; 6:e008376.doi: 10.1136/bmjopen-2015-008376
48. Lundby-Christensen L, Almdal T, Boesgaard T, Breum L, Dunn E, Gade-Rasmussen B, Gluud C, Hedetoft C, Jarloev A, Jensen T, et al. Study rationale and design of the CIMT trial: the Copenhagen Insulin and Metformin Therapy trial. *Diabetes Obes Metab*. 2009; 11:315–322. DOI: 10.1111/j.1463-1326.2008.00959.x [PubMed: 19267709]
49. Blankenhorn DH, Selzer RH, Crawford DW, Barth JD, Liu CR, Liu CH, Mack WJ, Alaupovic P. Beneficial effects of colestipol-niacin therapy on the common carotid artery. Two- and four-year reduction of intima-media thickness measured by ultrasound. *Circulation*. 1993; 88:20–28. DOI: 10.1161/01.CIR.88.1.20 [PubMed: 8319334]
50. Azen SP, Mack WJ, Cashin-Hemphill L, LaBree L, Shircore AM, Selzer RH, Blankenhorn DH, Hodis HN. Progression of coronary artery disease predicts clinical coronary events. Long-term follow-up from the Cholesterol Lowering Atherosclerosis Study. *Circulation*. 1996; 93:34–41. DOI: 10.1161/01.CIR.93.1.34 [PubMed: 8616937]
51. Cashin-Hemphill L, Mack WJ, Pogoda JM, Sanmarco ME, Azen SP, Blankenhorn DH. Beneficial effects of colestipol-niacin on coronary atherosclerosis. A 4-year follow-up. *JAMA*. 1990; 264:3013–3017. DOI: 10.1001/jama.1990.03450230049028 [PubMed: 2243429]
52. Penne EL, Blankestijn PJ, Bots ML, van den Dorpel MA, Grooteman MP, Nubé MJ, van der Tweel I, ter Wee PM. Effect of increased convective clearance by on-line hemodiafiltration on all cause and cardiovascular mortality in chronic hemodialysis patients - the Dutch CONvective TRANsport STudy (CONTRAST): rationale and design of a randomised controlled trial ISRCTN38365125. *Curr Control Trials Cardiovasc Med*. 2005; 6:8.doi: 10.1186/1468-6708-6-8 [PubMed: 15907201]

53. Grooteman MPC, van den Dorpel MA, Bots ML, Penne EL, van der Weerd NC, Mazairac AHA, den Hoedt CH, van der Tweel I, Lévesque R, Nubé MJ, et al. Effect of online hemodiafiltration on all-cause mortality and cardiovascular outcomes. *J Am Soc Nephrol*. 2012; 23:1087–1096. DOI: 10.1681/ASN.2011121140 [PubMed: 22539829]
54. Cao A-H, Wang J, Gao H-Q, Zhang P, Qiu J. Beneficial clinical effects of grape seed proanthocyanidin extract on the progression of carotid atherosclerotic plaques. *J Geriatr Cardiol*. 2015; 12:417–423. DOI: 10.11909/j.issn.1671-5411.2015.04.014 [PubMed: 26345394]
55. Yamasaki Y, Kim Y-S, Kawamori R. Rationale and protocol of a trial for prevention of diabetic atherosclerosis by using antiplatelet drugs: study of Diabetic Atherosclerosis Prevention by Cilostazol (DAPC study). *Cardiovasc Diabetol*. 2006; 5:16.doi: 10.1186/1475-2840-5-16 [PubMed: 16925808]
56. Katakami N, Kim Y-S, Kawamori R, Yamasaki Y. The phosphodiesterase inhibitor cilostazol induces regression of carotid atherosclerosis in subjects with type 2 diabetes mellitus: principal results of the Diabetic Atherosclerosis Prevention by Cilostazol (DAPC) study: a randomized trial. *Circulation*. 2010; 121:2584–2591. DOI: 10.1161/CIRCULATIONAHA.109.892414 [PubMed: 20516379]
57. Hoogerbrugge N, de Groot E, de Heide LHM, de Ridder MAJ, Birkenhäger JC, Stijnen T, Jansen H. Doxazosin and hydrochlorothiazide equally affect arterial wall thickness in hypertensive males with hypercholesterolaemia (the DAPHNE study). *Doxazosin Atherosclerosis Progression Study in Hypertensives in the Netherlands*. *Neth J Med*. 2002; 60:354–361. [PubMed: 12572707]
58. Ellingsen I, Seljeflot I, Arnesen H, Tonstad S. Vitamin C consumption is associated with less progression in carotid intima media thickness in elderly men: A 3-year intervention study. *Nutr Metab Cardiovasc Dis*. 2009; 19:8–14. DOI: 10.1016/j.numecd.2008.01.006 [PubMed: 18472409]
59. Asci G, Tz H, Ozkahya M, Duman S, Demirci MS, Cirit M, Sipahi S, Dheir H, Bozkurt D, Kircelli F, et al. The impact of membrane permeability and dialysate purity on cardiovascular outcomes. *J Am Soc Nephrol*. 2013; 24:1014–1023. DOI: 10.1681/ASN.2012090908 [PubMed: 23620396]
60. Ok ES, Asci G, Toz H, Ritz E, Kircelli F, Sever MS, Ozkahya M, Sipahi S, Dheir H, Bozkurt D, et al. Glycated hemoglobin predicts overall and cardiovascular mortality in non-diabetic hemodialysis patients. *Clin Nephrol*. 2014; 82:173–180. DOI: 10.5414/CN108251 [PubMed: 25079862]
61. Hodis HN, Mack WJ, Shoupe D, Azen SP, Stanczyk FZ, Hwang-Levine J, Budoff MJ, Henderson VW. Methods and baseline cardiovascular data from the Early versus Late Intervention Trial with Estradiol testing the menopausal hormone timing hypothesis. *Menopause*. 2015; 22:391–401. DOI: 10.1097/GME.0000000000000343 [PubMed: 25380275]
62. Hodis HN, Mack WJ, Henderson VW, Shoupe D, Budoff MJ, Hwang-Levine J, Li Y, Feng M, Dustin L, Kono N, et al. Vascular Effects of Early versus Late Postmenopausal Treatment with Estradiol. *N Engl J Med*. 2016; 374:1221–1231. DOI: 10.1056/NEJMoa1505241 [PubMed: 27028912]
63. Zanchetti A, Bond MG, Hennig M, Neiss A, Mancia G, Dal Palù C, Hansson L, Magnani B, Rahn K-H, Reid JL, et al. Calcium antagonist lacidipine slows down progression of asymptomatic carotid atherosclerosis: principal results of the European Lacidipine Study on Atherosclerosis (ELSA), a randomized, double-blind, long-term trial. *Circulation*. 2002; 106:2422–2427. DOI: 10.1161/01.CIR.0000039288.86470.DD [PubMed: 12417537]
64. Wiklund O, Hulthe J, Wikstrand J, Schmidt C, Olofsson S-O, Bondjers G. Effect of controlled release/extended release metoprolol on carotid intima-media thickness in patients with hypercholesterolemia: a 3-year randomized study. *Stroke*. 2002; 33:572–577. DOI: 10.1161/hs0202.102332 [PubMed: 11823672]
65. Blumenthal JA, Babyak MA, Hinderliter A, Watkins LL, Craighead L, Lin P-H, Caccia C, Johnson J, Waugh R, Sherwood A. Effects of the DASH diet alone and in combination with exercise and weight loss on blood pressure and cardiovascular biomarkers in men and women with high blood pressure: the ENCORE study. *Arch Intern Med*. 2010; 170:126–135. DOI: 10.1001/archinternmed.2009.470 [PubMed: 20101007]
66. Smith PJ, Blumenthal JA, Babyak MA, Craighead L, Welsh-Bohmer KA, Browndyke JN, Strauman TA, Sherwood A. Effects of the dietary approaches to stop hypertension diet, exercise, and caloric restriction on neurocognition in overweight adults with high blood pressure.

- Hypertension. 2010; 55:1331–1338. DOI: 10.1161/HYPERTENSIONAHA.109.146795 [PubMed: 20305128]
67. Kastelein JJP, Akdim F, Stroes ESG, Zwinderman AH, Bots ML, Stalenhoef AFH, Visseren FLJ, Sijbrands EJG, Trip MD, Stein EA, et al. Simvastatin with or without ezetimibe in familial hypercholesterolemia. *N Engl J Med*. 2008; 358:1431–1443. DOI: 10.1056/NEJMoa0800742 [PubMed: 18376000]
 68. Hodis HN, Mack WJ, Lobo RA, Shoupe D, Sevanian A, Mahrer PR, Selzer RH, Liu Cr CR, Liu Ch CH, Azen SP. Estrogen in the prevention of atherosclerosis. A randomized, double-blind, placebo-controlled trial. *Ann Intern Med*. 2001; 135:939–953. DOI: 10.7326/0003-4819-135-11-200112040-00005 [PubMed: 11730394]
 69. Keech A, Simes RJ, Barter P, Best J, Scott R, Taskinen MR, Forder P, Pillai A, Davis T, Glasziou P, et al. Effects of long-term fenofibrate therapy on cardiovascular events in 9795 people with type 2 diabetes mellitus (the FIELD study): randomised controlled trial. *Lancet*. 2005; 366:1849–1861. DOI: 10.1016/S0140-6736(05)67667-2 [PubMed: 16310551]
 70. Hiukka A, Westerbacka J, Leinonen ES, Watanabe H, Wiklund O, Hulthen LM, Salonen JT, Tuomainen T-P, Yki-Järvinen H, Keech AC, et al. Long-term effects of fenofibrate on carotid intima-media thickness and augmentation index in subjects with type 2 diabetes mellitus. *J Am Coll Cardiol*. 2008; 52:2190–2197. DOI: 10.1016/j.jacc.2008.09.049 [PubMed: 19095138]
 71. Davidson M, Rosenson RS, Maki KC, Nicholls SJ, Ballantyne CM, Setze C, Carlson DM, Stolzenbach J. Study design, rationale, and baseline characteristics: evaluation of fenofibric acid on carotid intima-media thickness in patients with type IIb dyslipidemia with residual risk in addition to atorvastatin therapy (FIRST) trial. *Cardiovasc Drugs Ther*. 2012; 26:349–358. DOI: 10.1007/s10557-012-6395-z [PubMed: 22622962]
 72. Davidson MH, Rosenson RS, Maki KC, Nicholls SJ, Ballantyne CM, Mazzone T, Carlson DM, Williams LA, Kelly MT, Camp HS, et al. Effects of fenofibric acid on carotid intima-media thickness in patients with mixed dyslipidemia on atorvastatin therapy: randomized, placebo-controlled study (FIRST). *Arterioscler Thromb Vasc Biol*. 2014; 34:1298–1306. DOI: 10.1161/ATVBAHA.113.302926 [PubMed: 24743431]
 73. Burggraaf B, van Breukelen-van der Stoep DF, de Vries MA, Klop B, van Zeben J, van de Geijn G-JM, van der Meulen N, Birnie E, Prinzen L, Castro Cabezas M. Progression of subclinical atherosclerosis in subjects with rheumatoid arthritis and the metabolic syndrome. *Atherosclerosis*. 2018; 271:84–91. DOI: 10.1016/j.atherosclerosis.2018.02.019 [PubMed: 29482038]
 74. Burggraaf B, van Breukelen-van der Stoep DF, de Vries MA, Klop B, Liem AH, van de Geijn G-JM, van der Meulen N, Birnie E, van der Zwan EM, van Zeben J, et al. Effect of a treat-to-target intervention of cardiovascular risk factors on subclinical and clinical atherosclerosis in rheumatoid arthritis: a randomised clinical trial. *Ann Rheum Dis*. 2019; 78:335–341. DOI: 10.1136/annrheumdis-2018-214075 [PubMed: 30610067]
 75. Lonn EM, Bosch J, Diaz R, Lopez-Jaramillo P, Ramachandran A, Hâncu N, Hanefeld M, Krum H, Ryden L, Smith S, et al. Effect of insulin glargine and n-3FA on carotid intima-media thickness in people with dysglycemia at high risk for cardiovascular events: the glucose reduction and atherosclerosis continuing evaluation study (ORIGIN-GRACE). *Diabetes Care*. 2013; 36:2466–2474. DOI: 10.2337/dc12-2129 [PubMed: 23564916]
 76. Gresele P, Migliacci R, Arosio E, Bonizzoni E, Minuz P, Violi F. Effect on walking distance and atherosclerosis progression of a nitric oxide-donating agent in intermittent claudication. *J Vasc Surg*. 2012; 56:1622–8, 1628.e1-5. DOI: 10.1016/j.jvs.2012.05.064 [PubMed: 22963812]
 77. Held C, Sumner G, Sheridan P, McQueen M, Smith S, Dagenais G, Yusuf S, Lonn E. Correlations between plasma homocysteine and folate concentrations and carotid atherosclerosis in high-risk individuals: baseline data from the Homocysteine and Atherosclerosis Reduction Trial (HART). *Vasc Med*. 2008; 13:245–253. DOI: 10.1177/1358863X08092102 [PubMed: 18940900]
 78. Hulley S, Grady D, Bush T, Furberg C, Herrington D, Riggs B, Vittinghoff E. Randomized trial of estrogen plus progestin for secondary prevention of coronary heart disease in postmenopausal women. Heart and Estrogen/progestin Replacement Study (HERS) Research Group. *JAMA*. 1998; 280:605–613. DOI: 10.1001/jama.280.7.605 [PubMed: 9718051]
 79. Byington RP, Furberg CD, Herrington DM, Herd JA, Hunninghake D, Lowery M, Riley W, Craven T, Chaput L, Ireland CC, et al. Effect of estrogen plus progestin on progression of carotid

- atherosclerosis in postmenopausal women with heart disease: HERS B-mode substudy. *Arterioscler Thromb Vasc Biol.* 2002; 22:1692–1697. DOI: 10.1161/01.atv.0000033514.79653.04 [PubMed: 12377751]
80. Anderssen SA, Hjelstuen AK, Hjermann I, Bjerkan K, Holme I. Fluvastatin and lifestyle modification for reduction of carotid intima-media thickness and left ventricular mass progression in drug-treated hypertensives. *Atherosclerosis.* 2005; 178:387–397. DOI: 10.1016/j.atherosclerosis.2004.08.033 [PubMed: 15694949]
 81. Simon A, Gariépy J, Moyses D, Levenson J. Differential effects of nifedipine and co-amilofide on the progression of early carotid wall changes. *Circulation.* 2001; 103:2949–2954. DOI: 10.1161/01.CIR.103.24.2949 [PubMed: 11413085]
 82. Brown MJ, Palmer CR, Castaigne A, de Leeuw PW, Mancia G, Rosenthal T, Ruilope LM. Morbidity and mortality in patients randomised to double-blind treatment with a long-acting calcium-channel blocker or diuretic in the International Nifedipine GITS study: Intervention as a Goal in Hypertension Treatment (INSIGHT). *Lancet.* 2000; 356:366–372. DOI: 10.1016/S0140-6736(00)02527-7 [PubMed: 10972368]
 83. Taddei S, Ghiadoni L, Salvetti A. Current treatment of patients with hypertension: therapeutic implications of INSIGHT. *Drugs.* 2003; 63:1435–1444. DOI: 10.2165/00003495-200363140-00001 [PubMed: 12834362]
 84. Hosomi N, Nagai Y, Kohriyama T, Ohtsuki T, Aoki S, Nezu T, Maruyama H, Sunami N, Yokota C, Kitagawa K, et al. The Japan Statin Treatment Against Recurrent Stroke (J-STARS): A Multicenter, Randomized, Open-label, Parallel-group Study. *EBioMedicine.* 2015; 2:1071–1078. DOI: 10.1016/j.ebiom.2015.08.006 [PubMed: 26501105]
 85. Toyoda K, Minematsu K, Yasaka M, Nagai Y, Hosomi N, Origasa H, Kitagawa K, Uchiyama S, Koga M, Matsumoto M. The Japan Statin Treatment Against Recurrent Stroke (J-STARS) Echo Study: Rationale and Trial Protocol. *J Stroke Cerebrovasc Dis.* 2017; 26:595–599. DOI: 10.1016/j.jstrokecerebrovasdis.2016.11.113 [PubMed: 28010953]
 86. Koga M, Toyoda K, Minematsu K, Yasaka M, Nagai Y, Aoki S, Nezu T, Hosomi N, Kagimura T, Origasa H, et al. Long-Term Effect of Pravastatin on Carotid Intima-Media Complex Thickness: The J-STARS Echo Study (Japan Statin Treatment Against Recurrent Stroke). *Stroke.* 2018; 49:107–113. DOI: 10.1161/STROKEAHA.117.018387 [PubMed: 29191850]
 87. Wada S, Koga M, Toyoda K, Minematsu K, Yasaka M, Nagai Y, Aoki S, Nezu T, Hosomi N, Kagimura T, et al. Factors Associated with Intima-Media Complex Thickness of the Common Carotid Artery in Japanese Noncardioembolic Stroke Patients with Hyperlipidemia: The J-STARS Echo Study. *J Atheroscler Thromb.* 2018; 25:359–373. DOI: 10.5551/jat.41533 [PubMed: 29118311]
 88. Wada S, Koga M, Minematsu K, Toyoda K, Suzuki R, Kagimura T, Nagai Y, Aoki S, Nezu T, Hosomi N, et al. Baseline Carotid Intima-Media Thickness and Stroke Recurrence During Secondary Prevention With Pravastatin. *Stroke.* 2019; 50:1586–1589. DOI: 10.1161/STROKEAHA.119.024968 [PubMed: 31035902]
 89. Nohara R, Daida H, Hata M, Kaku K, Kawamori R, Kishimoto J, Kurabayashi M, Masuda I, Sakuma I, Yamazaki T, et al. Effect of intensive lipid-lowering therapy with rosuvastatin on progression of carotid intima-media thickness in Japanese patients: Justification for Atherosclerosis Regression Treatment (JART) study. *Circ J.* 2012; 76:221–229. DOI: 10.1253/circj.CJ-11-0887 [PubMed: 22094911]
 90. Salonen R, Nyyssönen K, Porkkala E, Rummukainen J, Belder R, Park JS, Salonen JT. Kuopio Atherosclerosis Prevention Study (KAPS). A population-based primary preventive trial of the effect of LDL lowering on atherosclerotic progression in carotid and femoral arteries. *Circulation.* 1995; 92:1758–1764. DOI: 10.1161/01.CIR.92.7.1758 [PubMed: 7671358]
 91. Harman SM, Black DM, Naftolin F, Brinton EA, Budoff MJ, Cedars MI, Hopkins PN, Lobo RA, Manson JE, Merriam GR, et al. Arterial imaging outcomes and cardiovascular risk factors in recently menopausal women: a randomized trial. *Ann Intern Med.* 2014; 161:249–260. DOI: 10.7326/M14-0353 [PubMed: 25069991]
 92. Fulton RL, McMurdo MET, Hill A, Abboud RJ, Arnold GP, Struthers AD, Khan F, Vermeer C, Knapen MHJ, Drummen NEA, et al. Effect of Vitamin K on Vascular Health and Physical

- Function in Older People with Vascular Disease—A Randomised Controlled Trial. *J Nutr Health Aging*. 2016; 20:325–333. DOI: 10.1007/s12603-015-0619-4 [PubMed: 26892582]
93. Katakami N, Yamasaki Y, Hayaishi-Okano R, Ohtoshi K, Kaneto H, Matsuhisa M, Kosugi K, Hori M. Metformin or gliclazide, rather than glibenclamide, attenuate progression of carotid intima-media thickness in subjects with type 2 diabetes. *Diabetologia*. 2004; 47:1906–1913. DOI: 10.1007/s00125-004-1547-8 [PubMed: 15565373]
 94. Koyasu M, Ishii H, Watarai M, Takemoto K, Inden Y, Takeshita K, Amano T, Yoshikawa D, Matsubara T, Murohara T. Impact of acarbose on carotid intima-media thickness in patients with newly diagnosed impaired glucose tolerance or mild type 2 diabetes mellitus: A one-year, prospective, randomized, open-label, parallel-group study in Japanese adults with established coronary artery disease. *Clin Ther*. 2010; 32:1610–1617. DOI: 10.1016/j.clinthera.2010.07.015 [PubMed: 20974318]
 95. Ludwig M, Stapff M, Ribeiro A, Fritschka E, Tholl U, Smith RD, Stumpe KO. Comparison of the effects of losartan and atenolol on common carotid artery intima-media thickness in patients with hypertension: results of a 2-year, double-blind, randomized, controlled study. *Clin Ther*. 2002; 24:1175–1193. DOI: 10.1016/S0149-2918(02)80028-5 [PubMed: 12182261]
 96. Olsen MH, Fossum E, Høieggan A, Wachtell K, Hjerkin E, Nesbitt SD, Andersen UB, Phillips RA, Gaboury CL, Ibsen H, et al. Long-term treatment with losartan versus atenolol improves insulin sensitivity in hypertension: ICARUS, a LIFE substudy. *J Hypertens*. 2005; 23:891–898. DOI: 10.1097/01.hjh.0000163160.60234.15 [PubMed: 15775796]
 97. MacMahon S, Sharpe N, Gamble G, Hart H, Scott J, Simes J, White H. Effects of lowering average of below-average cholesterol levels on the progression of carotid atherosclerosis: results of the LIPID Atherosclerosis Substudy. LIPID Trial Research Group. *Circulation*. 1998; 97:1784–1790. DOI: 10.1161/01.CIR.97.18.1784 [PubMed: 9603532]
 98. The LIPID Study Group. Design features and baseline characteristics of the LIPID (Long-Term Intervention with Pravastatin in Ischemic Disease) Study: a randomized trial in patients with previous acute myocardial infarction and/or unstable angina pectoris. *Am J Cardiol*. 1995; 76:474–479. DOI: 10.1016/S0002-9149(99)80133-7 [PubMed: 7653447]
 99. The Long-Term Intervention with Pravastatin in Ischaemic Disease (LIPID) Study Group. Prevention of cardiovascular events and death with pravastatin in patients with coronary heart disease and a broad range of initial cholesterol levels. *N Engl J Med*. 1998; 339:1349–1357. DOI: 10.1056/NEJM199811053391902 [PubMed: 9841303]
 100. Watts GF. Treating low HDL-cholesterol in normocholesterolaemic patients with coronary disease: statins, fibrates or horses for courses? *Eur Heart J*. 2004; 25:716–719. DOI: 10.1016/j.ehj.2003.12.024 [PubMed: 15120879]
 101. Luijendijk P, Bouma BJ, Vriend JWJ, Groenink M, Vliegen HW, de Groot E, Pieper PG, van Dijk APJ, Sieswerda GT, Veen G, et al. Rationale and design of a trial on the effect of high dose statins on cardiovascular risk in adults after successful coarctation repair. *Contemp Clin Trials*. 2012; 33:410–416. DOI: 10.1016/j.cct.2011.11.011 [PubMed: 22108629]
 102. Luijendijk P, Bouma BJ, Vriend JWJ, Groenink M, Vliegen HW, de Groot E, Pieper PG, van Dijk APJ, Sieswerda GT, Konings TC, et al. Beneficial effect of high dose statins on the vascular wall in patients with repaired aortic coarctation? *Int J Cardiol*. 2014; 176:40–47. DOI: 10.1016/j.ijcard.2014.06.016 [PubMed: 25042661]
 103. Blankenhorn DH, Azen SP, Krams DM, Mack WJ, Cashin-Hemphill L, Hodis HN, DeBoer LW, Mahrer PR, Masteller MJ, Vailas LI, et al. Coronary angiographic changes with lovastatin therapy. The Monitored Atherosclerosis Regression Study (MARS). *Ann Intern Med*. 1993; 119:969–976. DOI: 10.7326/0003-4819-119-10-199311150-00002 [PubMed: 8214993]
 104. Hodis HN, Mack WJ, LaBree L, Selzer RH, Liu C, Alaupovic P, Kwong-Fu H, Azen SP. Reduction in carotid arterial wall thickness using lovastatin and dietary therapy: a randomized controlled clinical trial. *Ann Intern Med*. 1996; 124:548–556. DOI: 10.7326/0003-4819-124-6-199603150-00002 [PubMed: 8597317]
 105. Magliano D, McNeil J, Branley P, Shiel L, Demos L, Wolfe R, Kotsopoulos D, McGrath B. The Melbourne Atherosclerosis Vitamin E Trial (MAVET): a study of high dose vitamin E in smokers. *Eur J Cardiovasc Prev Rehabil*. 2006; 13:341–347. DOI: 10.1097/01.hjr.0000219108.10167.46 [PubMed: 16926662]

106. Bemelman FJ, de Fijter JW, Kers J, Meyer C, Peters-Sengers H, de Maar EF, van der Pant KAMI, de Vries APJ, Sanders J-S, Zwinderman A, et al. Early Conversion to Prednisolone/Everolimus as an Alternative Weaning Regimen Associates With Beneficial Renal Transplant Histology and Function: The Randomized-Controlled MECANO Trial. *Am J Transplant*. 2017; 17:1020–1030. DOI: 10.1111/ajt.14048 [PubMed: 27639190]
107. van Dijk M, van Roon AM, Said MY, Bemelman FJ, van der Homan Heide JJ, de Fijter HW, de Vries APJ, Bakker SJL, Sanders JSF. Long-term cardiovascular outcome of renal transplant recipients after early conversion to everolimus compared to calcineurin inhibition: results from the randomized controlled MECANO trial. *Transpl Int*. 2018; 31:1380–1390. DOI: 10.1111/tri.13322 [PubMed: 30106185]
108. van Vonderen MGA, Hassink EAM, van Agtmael MA, Stehouwer CDA, Danner SA, Reiss P, Smulders Y. Increase in carotid artery intima-media thickness and arterial stiffness but improvement in several markers of endothelial function after initiation of antiretroviral therapy. *J Infect Dis*. 2009; 199:1186–1194. DOI: 10.1086/597475 [PubMed: 19275490]
109. van Vonderen MGA, Lips P, van Agtmael MA, Hassink EAM, Brinkman K, Geerlings SE, Sutinen J, Ristola M, Danner SA, Reiss P. First line zidovudine/lamivudine/lopinavir/ritonavir leads to greater bone loss compared to nevirapine/lopinavir/ritonavir. *AIDS*. 2009; 23:1367–1376. DOI: 10.1097/QAD.0b013e32832c4947 [PubMed: 19424051]
110. Crouse JR, Raichlen JS, Riley WA, Evans GW, Palmer MK, O’Leary DH, Grobbee DE, Bots ML. Effect of rosuvastatin on progression of carotid intima-media thickness in low-risk individuals with subclinical atherosclerosis: the METEOR Trial. *JAMA*. 2007; 297:1344–1353. DOI: 10.1001/jama.297.12.1344 [PubMed: 17384434]
111. Cunha AR, D’El-Rei J, Medeiros F, Umbelino B, Oigman W, Touyz RM, Neves MF. Oral magnesium supplementation improves endothelial function and attenuates subclinical atherosclerosis in thiazide-treated hypertensive women. *J Hypertens*. 2017; 35:89–97. DOI: 10.1097/HJH.0000000000001129 [PubMed: 27759579]
112. Borhani NO, Mercuri M, Borhani PA, Buckalew VM, Canossa-Terris M, Carr AA, Kappagoda T, Rocco MV, Schnaper HW, Sowers JR, et al. Final outcome results of the Multicenter Isradipine Diuretic Atherosclerosis Study (MIDAS). A randomized controlled trial. *JAMA*. 1996; 276:785–791. DOI: 10.1001/jama.1996.03540100029024 [PubMed: 8769587]
113. Valensi P, Baguet J-P, Asmar R, Nisse-Durgeat S, Mallion J-M. Effect of candesartan cilexetil on carotid intima-media thickness in hypertensive type 2 diabetic patients. MITEC study: design and baseline characteristics. *Br J Diabetes Vasc Dis*. 2007; 7:18–24. DOI: 10.1177/14746514070070010401
114. Baguet JP, Asmar R, Valensi P, Nisse-Durgeat S, Mallion JM. Effects of candesartan cilexetil on carotid remodeling in hypertensive diabetic patients: the MITEC study. *Vasc Health Risk Manag*. 2009; 5:175–183. DOI: 10.2147/VHRM.S3409 [PubMed: 19436670]
115. Makimura H, Feldpausch MN, Rope AM, Hemphill LC, Torriani M, Lee H, Grinspoon SK. Metabolic effects of a growth hormone-releasing factor in obese subjects with reduced growth hormone secretion: a randomized controlled trial. *J Clin Endocrinol Metab*. 2012; 97:4769–4779. DOI: 10.1210/jc.2012-2794 [PubMed: 23015655]
116. Masiá M, Bernal E, Padilla S, García N, Escribano JC, Martínez E, Gutiérrez F. A pilot randomized trial comparing an intensive versus a standard intervention in stable HIV-infected patients with moderate-high cardiovascular risk. *J Antimicrob Chemother*. 2009; 64:589–598. DOI: 10.1093/jac/dkp250 [PubMed: 19625372]
117. Mitsuhashi N, Tanaka Y, Kubo S, Ogawa S, Hayashi C, Uchino H, Shimizu T, Watada H, Kawasumi M, Onuma T, et al. Effect of cilostazol, a phosphodiesterase inhibitor, on carotid IMT in Japanese type 2 diabetic patients. *Endocr J*. 2004; 51:545–550. DOI: 10.1507/endocrj.51.545 [PubMed: 15644572]
118. Mortazavi M, Moeinzadeh F, Saadatnia M, Shahidi S, McGee JC, Minagar A. Effect of magnesium supplementation on carotid intima-media thickness and flow-mediated dilatation among hemodialysis patients: a double-blind, randomized, placebo-controlled trial. *Eur Neurol*. 2013; 69:309–316. DOI: 10.1159/000346427 [PubMed: 23548855]

119. Ishigaki Y, Kono S, Katagiri H, Oka Y, Oikawa S. Elevation of HDL-C in response to statin treatment is involved in the regression of carotid atherosclerosis. *J Atheroscler Thromb*. 2014; 21:1055–1065. DOI: 10.5551/jat.22095 [PubMed: 24930383]
120. Nakamura T, Kawagoe Y, Matsuda T, Ueda Y, Shimada N, Ebihara I, Koide H. Oral adsorbent AST-120 decreases carotid intima-media thickness and arterial stiffness in patients with chronic renal failure. *Kidney Blood Press Res*. 2004; 27:121–126. DOI: 10.1159/000077536 [PubMed: 15051932]
121. Ntaios G, Savopoulos C, Karamitsos D, Economou I, Destanis E, Chrysogonidis I, Pidonia I, Zebekakis P, Polatides C, Sion M, et al. The effect of folic acid supplementation on carotid intima-media thickness in patients with cardiovascular risk: a randomized, placebo-controlled trial. *Int J Cardiol*. 2010; 143:16–19. DOI: 10.1016/j.ijcard.2009.01.023 [PubMed: 19201496]
122. Bots ML, Evans GW, Riley W, Meijer R, McBride KH, Paskett ED, Helmond FA, Grobbee DE. The Osteoporosis Prevention and Arterial effects of tiboLone (OPAL) study: design and baseline characteristics. *Control Clin Trials*. 2003; 24:752–775. DOI: 10.1016/S0197-2456(03)00096-5 [PubMed: 14662281]
123. Bots ML, Evans GW, Riley W, McBride KH, Paskett ED, Helmond FA, Grobbee DE. The effect of tibolone and continuous combined conjugated equine oestrogens plus medroxyprogesterone acetate on progression of carotid intima-media thickness: the Osteoporosis Prevention and Arterial effects of tiboLone (OPAL) study. *Eur Heart J*. 2006; 27:746–755. DOI: 10.1093/eurheartj/ehi695 [PubMed: 16415304]
124. MacMahon S, Sharpe N, Gamble G, Clague A, Mhurchu CN, Clark T, Hart H, Scott J, White H. Randomized, placebo-controlled trial of the angiotensin-converting enzyme inhibitor, ramipril, in patients with coronary or other occlusive arterial disease. PART-2 Collaborative Research Group. *Prevention of Atherosclerosis with Ramipril*. *J Am Coll Cardiol*. 2000; 36:438–443. DOI: 10.1016/S0735-1097(00)00736-1 [PubMed: 10933355]
125. Ikeda K, Takahashi T, Yamada H, Matsui K, Sawada T, Nakamura T, Matsubara H. Effect of intensive statin therapy on regression of carotid intima-media thickness in patients with subclinical carotid atherosclerosis (a prospective, randomized trial: PEACE (Pitavastatin Evaluation of Atherosclerosis Regression by Intensive Cholesterol-lowering Therapy) study). *Eur J Prev Cardiol*. 2013; 20:1069–1079. DOI: 10.1177/2047487312451539 [PubMed: 22689416]
126. Bousser M-G, Amarenco P, Chamorro A, Fisher M, Ford I, Fox KM, Hennerici MG, Mattle HP, Rothwell PM, de Cordoie A, et al. Terutroban versus aspirin in patients with cerebral ischaemic events (PERFORM): a randomised, double-blind, parallel-group trial. *Lancet*. 2011; 377:2013–2022. DOI: 10.1016/S0140-6736(11)60600-4 [PubMed: 21616527]
127. Bots ML, Ford I, Lloyd SM, Laurent S, Touboul PJ, Hennerici MG. Thromboxane prostaglandin receptor antagonist and carotid atherosclerosis progression in patients with cerebrovascular disease of ischemic origin: a randomized controlled trial. *Stroke*. 2014; 45:2348–2353. DOI: 10.1161/STROKEAHA.114.004775 [PubMed: 25070960]
128. Kapellas K, Maple-Brown LJ, Jamieson LM, Do LG, O’Dea K, Brown A, Cai TY, Anstey NM, Sullivan DR, Wang H, et al. Effect of periodontal therapy on arterial structure and function among aboriginal australians: a randomized, controlled trial. *Hypertension*. 2014; 64:702–708. DOI: 10.1161/HYPERTENSIONAHA.114.03359 [PubMed: 24958498]
129. Angerer P, Kothny W, Störk S, von Schacky C. Hormone replacement therapy and distensibility of carotid arteries in postmenopausal women: a randomized, controlled trial. *J Am Coll Cardiol*. 2000; 36:1789–1796. DOI: 10.1016/S0735-1097(00)00969-4 [PubMed: 11092645]
130. Zanchetti A, Crepaldi G, Bond MG, Gallus GV, Veglia F, Ventura A, Mancia G, Baggio G, Sampieri L, Rubba P, et al. Systolic and pulse blood pressures (but not diastolic blood pressure and serum cholesterol) are associated with alterations in carotid intima-media thickness in the moderately hypercholesterolaemic hypertensive patients of the Plaque Hypertension Lipid Lowering Italian Study. PHYLLIS study group. *J Hypertens*. 2001; 19:79–88. DOI: 10.1097/00004872-200101000-00011 [PubMed: 11204308]
131. Zanchetti A, Crepaldi G, Bond MG, Gallus G, Veglia F, Mancia G, Ventura A, Baggio G, Sampieri L, Rubba P, et al. Different effects of antihypertensive regimens based on fosinopril or hydrochlorothiazide with or without lipid lowering by pravastatin on progression of asymptomatic carotid atherosclerosis: principal results of PHYLLIS—a randomized double-blind

- trial. *Stroke*. 2004; 35:2807–2812. DOI: 10.1161/01.STR.0000147041.00840.59 [PubMed: 15514192]
132. Furberg CD, Byington RP, Crouse JR, Espeland MA. Pravastatin, lipids, and major coronary events. *Am J Cardiol*. 1994; 73:1133–1134. DOI: 10.1016/0002-9149(94)90297-6 [PubMed: 8198043]
 133. Crouse JR, Byington RP, Bond MG, Espeland MA, Craven TE, Sprinkle JW, McGovern ME, Furberg CD. Pravastatin, Lipids, and Atherosclerosis in the Carotid Arteries (PLAC-II). *Am J Cardiol*. 1995; 75:455–459. DOI: 10.1016/S0002-9149(99)80580-3 [PubMed: 7863988]
 134. Byington RP, Furberg CD, Crouse JR, Espeland MA, Bond MG. Pravastatin, Lipids, and Atherosclerosis in the Carotid Arteries (PLAC-II). *Am J Cardiol*. 1995; 76:54C–59C. DOI: 10.1016/S0002-9149(99)80471-8
 135. Bhatt DL, Chew DP, Grines C, Mukherjee D, Leeser M, Gilchrist IC, Corbelli JC, Blankenship JC, Eres A, Steinhilb S, et al. Peroxisome proliferator-activated receptor gamma agonists for the Prevention of Adverse events following percutaneous coronary Revascularization—results of the PPAR study. *Am Heart J*. 2007; 154:137–143. DOI: 10.1016/j.ahj.2007.03.029 [PubMed: 17584566]
 136. Estruch R, Ros E, Salas-Salvadó J, Covas M-I, Corella D, Arós F, Gómez-Gracia E, Ruiz-Gutiérrez V, Fiol M, Lapetra J, et al. Primary prevention of cardiovascular disease with a Mediterranean diet. *N Engl J Med*. 2013; 368:1279–1290. DOI: 10.1056/NEJMoa1200303 [PubMed: 23432189]
 137. Sala-Vila A, Romero-Mamani E-S, Gilabert R, Núñez I, de La Torre R, Corella D, Ruiz-Gutiérrez V, López-Sabater M-C, Pintó X, Rekondo J, et al. Changes in ultrasound-assessed carotid intima-media thickness and plaque with a Mediterranean diet: a substudy of the PREDIMED trial. *Arterioscler Thromb Vasc Biol*. 2014; 34:439–445. DOI: 10.1161/ATVBAHA.113.302327 [PubMed: 24285581]
 138. Diercks GF, Janssen WM, van Boven AJ, Bak AA, de Jong PE, Crijns HJ, van Gilst WH. Rationale, design, and baseline characteristics of a trial of prevention of cardiovascular and renal disease with fosinopril and pravastatin in nonhypertensive, nonhypercholesterolemic subjects with microalbuminuria (the Prevention of RENal and Vascular ENdstage Disease Intervention Trial PREVENT IT). *Am J Cardiol*. 2000; 86:635–638. DOI: 10.1016/S0002-9149(00)01042-0 [PubMed: 10980214]
 139. Asselbergs FW, Diercks GFH, Hillege HL, van Boven AJ, Janssen WMT, Voors AA, de Zeeuw D, de Jong PE, van Veldhuisen DJ, van Gilst WH. Effects of fosinopril and pravastatin on cardiovascular events in subjects with microalbuminuria. *Circulation*. 2004; 110:2809–2816. DOI: 10.1161/01.CIR.0000146378.65439.7A [PubMed: 15492322]
 140. Asselbergs FW, van Roon AM, Hillege HL, de Jong PE, Gans ROB, Smit AJ, van Gilst WH. Effects of fosinopril and pravastatin on carotid intima-media thickness in subjects with increased albuminuria. *Stroke*. 2005; 36:649–653. DOI: 10.1161/01.STR.0000155731.92786.e9 [PubMed: 15692120]
 141. Brouwers FP, Asselbergs FW, Hillege HL, de Boer RA, Gansevoort RT, van Veldhuisen DJ, van Gilst WH. Long-term effects of fosinopril and pravastatin on cardiovascular events in subjects with microalbuminuria: Ten years of follow-up of Prevention of Renal and Vascular End-stage Disease Intervention Trial (PREVENT IT). *Am Heart J*. 2011; 161:1171–1178. DOI: 10.1016/j.ahj.2011.03.028 [PubMed: 21641365]
 142. Byington RP, Miller ME, Herrington D, Riley W, Pitt B, Furberg CD, Hunninghake DB, Mancini GB. Rationale, design, and baseline characteristics of the Prospective Randomized Evaluation of the Vascular Effects of Norvasc Trial (PREVENT). *Am J Cardiol*. 1997; 80:1087–1090. DOI: 10.1016/s0002-9149(97)00611-5 [PubMed: 9352986]
 143. Pitt B, Byington RP, Furberg CD, Hunninghake DB, Mancini GB, Miller ME, Riley W. Effect of amlodipine on the progression of atherosclerosis and the occurrence of clinical events. PREVENT Investigators. *Circulation*. 2000; 102:1503–1510. DOI: 10.1161/01.cir.102.13.1503 [PubMed: 11004140]
 144. Kaku K, Daida H, Kashiwagi A, Yamashina A, Yamazaki T, Momomura S-i, Iwase T, Yamasaki Y, Nagatsuka K, Kitagawa K, et al. Long-term effects of pioglitazone in Japanese patients with

- type 2 diabetes without a recent history of macrovascular morbidity. *Curr Med Res Opin.* 2009; 25:2925–2932. DOI: 10.1185/03007990903328124 [PubMed: 19835463]
145. Yamasaki Y, Katakami N, Furukado S, Kitagawa K, Nagatsuka K, Kashiwagi A, Daida H, Kawamori R, Kaku K. Long-term effects of pioglitazone on carotid atherosclerosis in Japanese patients with type 2 diabetes without a recent history of macrovascular morbidity. *J Atheroscler Thromb.* 2010; 17:1132–1140. DOI: 10.5551/jat.4663 [PubMed: 20686324]
 146. Kastelein JJP, van Leuven SI, Burgess L, Evans GW, Kuivenhoven JA, Barter PJ, Revkin JH, Grobbee DE, Riley WA, Shear CL, et al. Effect of torcetrapib on carotid atherosclerosis in familial hypercholesterolemia. *N Engl J Med.* 2007; 356:1620–1630. DOI: 10.1056/NEJMoa071359 [PubMed: 17387131]
 147. Kastelein JJP, van Leuven SI, Evans GW, Riley WA, Revkin JH, Shear CL, Bots ML. Designs of RADIANCE 1 and 2: carotid ultrasound studies comparing the effects of torcetrapib/atorvastatin with atorvastatin alone on atherosclerosis. *Curr Med Res Opin.* 2007; 23:885–894. DOI: 10.1185/030079907X182121 [PubMed: 17407645]
 148. Bots ML, Visseren FL, Evans GW, Riley WA, Revkin JH, Tegeler CH, Shear CL, Duggan WT, Vicari RM, Grobbee DE, et al. Torcetrapib and carotid intima-media thickness in mixed dyslipidaemia (RADIANCE 2 study): a randomised, double-blind trial. *Lancet.* 2007; 370:153–160. DOI: 10.1016/S0140-6736(07)61088-5 [PubMed: 17630038]
 149. Hedblad B, Zambanini A, Nilsson P, Janzon L, Berglund G. Rosiglitazone and carotid IMT progression rate in a mixed cohort of patients with type 2 diabetes and the insulin resistance syndrome: main results from the Rosiglitazone Atherosclerosis Study. *J Intern Med.* 2007; 261:293–305. DOI: 10.1111/j.1365-2796.2007.01767.x [PubMed: 17305652]
 150. de Groot E, Jukema JW, van Boven AJ, Reiber JH, Zwinderman AH, Lie KI, Ackerstaff RA, Bruschke AV. Effect of pravastatin on progression and regression of coronary atherosclerosis and vessel wall changes in carotid and femoral arteries: a report from the Regression Growth Evaluation Statin Study. *Am J Cardiol.* 1995; 76:40C–46C. DOI: 10.1016/S0002-9149(99)80469-X [PubMed: 7793401]
 151. de Groot E, Jukema JW, van Montauban Swijndregt AD, Zwinderman AH, Ackerstaff RG, van der Steen AF, Bom N, Lie KI, Bruschke AV. B-mode ultrasound assessment of pravastatin treatment effect on carotid and femoral artery walls and its correlations with coronary arteriographic findings: a report of the Regression Growth Evaluation Statin Study (REGRESS). *J Am Coll Cardiol.* 1998; 31:1561–1567. DOI: 10.1016/S0735-1097(98)00170-3 [PubMed: 9626835]
 152. Petrie JR, Chaturvedi N, Ford I, Hramiak I, Hughes AD, Jenkins AJ, E Klein B, Klein R, Ooi TC, Rossing P, et al. Metformin in adults with type 1 diabetes: Design and methods of REDucing with MetfOrmin Vascular Adverse Lesions (REMOVAL): An international multicentre trial. *Diabetes Obes Metab.* 2017; 19:509–516. DOI: 10.1111/dom.12840 [PubMed: 27935183]
 153. Petrie JR, Chaturvedi N, Ford I, Brouwers MCGJ, Greenlaw N, Tillin T, Hramiak I, Hughes AD, Jenkins AJ, Klein BEK, et al. Cardiovascular and metabolic effects of metformin in patients with type 1 diabetes (REMOVAL): a double-blind, randomised, placebo-controlled trial. *Lancet Diabetes Endocrinol.* 2017; 5:597–609. DOI: 10.1016/S2213-8587(17)30194-8 [PubMed: 28615149]
 154. Agewall S, Fagerberg B, Berglund G, Schmidt C, Wendelhag I, Wikstrand J. Multiple risk intervention trial in high risk hypertensive men: comparison of ultrasound intima-media thickness and clinical outcome during 6 years of follow-up. *J Intern Med.* 2001; 249:305–314. DOI: 10.1046/j.1365-2796.2001.00818.x [PubMed: 11298850]
 155. Howard BV, Roman MJ, Devereux RB, Fleg JL, Galloway JM, Henderson JA, Howard WJ, Lee ET, Mete M, Poolaw B, et al. Effect of lower targets for blood pressure and LDL cholesterol on atherosclerosis in diabetes: the SANDS randomized trial. *JAMA.* 2008; 299:1678–1689. DOI: 10.1001/jama.299.14.1678 [PubMed: 18398080]
 156. Fleg JL, Mete M, Howard BV, Umans JG, Roman MJ, Ratner RE, Silverman A, Galloway JM, Henderson JA, Weir MR, et al. Effect of statins alone versus statins plus ezetimibe on carotid atherosclerosis in type 2 diabetes: the SANDS (Stop Atherosclerosis in Native Diabetics Study) trial. *J Am Coll Cardiol.* 2008; 52:2198–2205. DOI: 10.1016/j.jacc.2008.10.031 [PubMed: 19095139]

157. Weir MR, Yeh F, Silverman A, Devereux RB, Galloway JM, Henderson JA, Howard WJ, Russell M, Wilson C, Ratner R, et al. Safety and feasibility of achieving lower systolic blood pressure goals in persons with type 2 diabetes: the SANDS trial. *J Clin Hypertens (Greenwich)*. 2009; 11:540–548. DOI: 10.1111/j.1751-7176.2009.00121.x [PubMed: 19817934]
158. Angerer P, Kothny W, Störk S, von Schacky C. Effect of dietary supplementation with omega-3 fatty acids on progression of atherosclerosis in carotid arteries. *Cardiovasc Res*. 2002; 54:183–190. DOI: 10.1016/S0008-6363(02)00229-8 [PubMed: 12062374]
159. von Schacky C, Angerer P, Kothny W, Theisen K, Mudra H. The effect of dietary omega-3 fatty acids on coronary atherosclerosis. A randomized, double-blind, placebo-controlled trial. *Ann Intern Med*. 1999; 130:554–562. DOI: 10.7326/0003-4819-130-7-199904060-00003 [PubMed: 10189324]
160. Lonn E, Yusuf S, Dzavik V, Doris C, Yi Q, Smith S, Moore-Cox A, Bosch J, Riley W, Teo K. Effects of ramipril and vitamin E on atherosclerosis: the study to evaluate carotid ultrasound changes in patients treated with ramipril and vitamin E (SECURE). *Circulation*. 2001; 103:919–925. DOI: 10.1161/01.CIR.103.7.919 [PubMed: 11181464]
161. Mayer-Berger W, Simic D, Mahmoodzad J, Burtscher R, Kohlmeyer M, Schwitalla B, Redaelli M. Efficacy of a long-term secondary prevention programme following inpatient cardiovascular rehabilitation on risk and health-related quality of life in a low-education cohort: a randomized controlled study. *Eur J Prev Cardiol*. 2014; 21:145–152. DOI: 10.1177/2047487312465526 [PubMed: 23111536]
162. Elkeles RS, Diamond JR, Poulter C, Dhanjil S, Nicolaides AN, Mahmood S, Richmond W, Mather H, Sharp P, Feher MD. Cardiovascular outcomes in type 2 diabetes. A double-blind placebo-controlled study of bezafibrate: the St. Mary's, Ealing, Northwick Park Diabetes Cardiovascular Disease Prevention (SENDCAP) Study. *Diabetes Care*. 1998; 21:641–648. DOI: 10.2337/diacare.21.4.641 [PubMed: 9571357]
163. Katakami N, Mita T, Yoshii H, Onuma T, Kaneto H, Osonoi T, Shiraiwa T, Kosugi K, Umayahara Y, Yamamoto T, et al. Rationale, design, and baseline characteristics of a trial for the prevention of diabetic atherosclerosis using a DPP-4 inhibitor: the Study of Preventive Effects of Alogliptin on Diabetic Atherosclerosis (SPEAD-A). *J Atheroscler Thromb*. 2013; 20:893–902. DOI: 10.5551/jat.18333 [PubMed: 23965491]
164. Mita T, Katakami N, Yoshii H, Onuma T, Kaneto H, Osonoi T, Shiraiwa T, Kosugi K, Umayahara Y, Yamamoto T, et al. Alogliptin, a Dipeptidyl Peptidase 4 Inhibitor, Prevents the Progression of Carotid Atherosclerosis in Patients With Type 2 Diabetes: The Study of Preventive Effects of Alogliptin on Diabetic Atherosclerosis (SPEAD-A). *Diabetes Care*. 2016; 39:139–148. DOI: 10.2337/dc15-0781 [PubMed: 26628419]
165. Mita T, Katakami N, Shiraiwa T, Yoshii H, Onuma T, Kuribayashi N, Osonoi T, Kaneto H, Kosugi K, Umayahara Y, et al. Sitagliptin Attenuates the Progression of Carotid Intima-Media Thickening in Insulin-Treated Patients With Type 2 Diabetes: The Sitagliptin Preventive Study of Intima-Media Thickness Evaluation (SPIKE): A Randomized Controlled Trial. *Diabetes Care*. 2016; 39:455–464. DOI: 10.2337/dc15-2145 [PubMed: 26822324]
166. Mita T, Katakami N, Shiraiwa T, Yoshii H, Goshō M, Shimomura I, Watada H. Changes in carotid intima-media thickening in patients with type 2 diabetes mellitus: Subanalysis of the Sitagliptin Preventive Study of Intima-Media Thickness Evaluation. *J Diabetes Investig*. 2017; 8:254–255. DOI: 10.1111/jdi.12559
167. Katakami N, Mita T, Irie Y, Takahara M, Matsuoka T-A, Goshō M, Watada H, Shimomura I. Effect of sitagliptin on tissue characteristics of the carotid wall in patients with type 2 diabetes: a post hoc sub-analysis of the sitagliptin preventive study of intima-media thickness evaluation (SPIKE). *Cardiovasc Diabetol*. 2018; 17:24. doi: 10.1186/s12933-018-0666-3 [PubMed: 29402270]
168. Lonn EM, Gerstein HC, Sheridan P, Smith S, Diaz R, Mohan V, Bosch J, Yusuf S, Dagenais GR. Effect of ramipril and of rosiglitazone on carotid intima-media thickness in people with impaired glucose tolerance or impaired fasting glucose: STARR (STudy of Atherosclerosis with Ramipril and Rosiglitazone). *J Am Coll Cardiol*. 2009; 53:2028–2035. DOI: 10.1016/j.jacc.2008.12.072 [PubMed: 19477351]

169. Chiasson J-L, Josse RG, Gomis R, Hanefeld M, Karasik A, Laakso M. Acarbose treatment and the risk of cardiovascular disease and hypertension in patients with impaired glucose tolerance: the STOP-NIDDM trial. *JAMA*. 2003; 290:486–494. DOI: 10.1001/jama.290.4.486 [PubMed: 12876091]
170. Hanefeld M, Chiasson JL, Koehler C, Henkel E, Schaper F, Temelkova-Kurktschiev T. Acarbose slows progression of intima-media thickness of the carotid arteries in subjects with impaired glucose tolerance. *Stroke*. 2004; 35:1073–1078. DOI: 10.1161/01.STR.0000125864.01546.f2 [PubMed: 15073402]
171. Safarova MS, Trukhacheva EP, Ezhov MV, Afanas'eva OI, Afanas'eva MI, Tripoten' MI, Liakishev AA, Pokrovskii SN. Pleiotropic effects of nicotinic acid therapy in men with coronary heart disease and elevated lipoprotein(a) levels. *Kardiologija*. 2011; 51:9–16.
172. Sander D, Winbeck K, Klingelhöfer J, Etgen T, Conrad B. Enhanced progression of early carotid atherosclerosis is related to Chlamydia pneumoniae (Taiwan acute respiratory) seropositivity. *Circulation*. 2001; 103:1390–1395. DOI: 10.1161/01.CIR.103.10.1390 [PubMed: 11245642]
173. Sander D, Winbeck K, Klingelhöfer J, Etgen T, Conrad B. Reduced progression of early carotid atherosclerosis after antibiotic treatment and Chlamydia pneumoniae seropositivity. *Circulation*. 2002; 106:2428–2433. DOI: 10.1161/01.CIR.0000036748.26775.8D [PubMed: 12417538]
174. Spring S, Simon R, van der Loo B, Kovacevic T, Brockes C, Rousson V, Amann-Vesti B, Koppensteiner R. High-dose atorvastatin in peripheral arterial disease (PAD): effect on endothelial function, intima-media-thickness and local progression of PAD. An open randomized controlled pilot trial. *Thromb Haemost*. 2008; 99:182–189. DOI: 10.1160/TH07-04-0265 [PubMed: 18217152]
175. Stanley TL, Feldpausch MN, Oh J, Branch KL, Lee H, Torriani M, Grinspoon SK. Effect of tesamorelin on visceral fat and liver fat in HIV-infected patients with abdominal fat accumulation: a randomized clinical trial. *JAMA*. 2014; 312:380–389. DOI: 10.1001/jama.2014.8334 [PubMed: 25038357]
176. Stanton AV, Chapman JN, Mayet J, Sever PS, Poulter NR, Hughes AD, Thom SA. Effects of blood pressure lowering with amlodipine or lisinopril on vascular structure of the common carotid artery. *Clin Sci*. 2001; 101:455–464. DOI: 10.1042/cs1010455 [PubMed: 11672450]
177. Hodis HN, Mack WJ, Zheng L, Li Y, Torres M, Sevilla D, Stewart Y, Hollen B, Garcia K, Alaupovic P, et al. Effect of peroxisome proliferator-activated receptor gamma agonist treatment on subclinical atherosclerosis in patients with insulin-requiring type 2 diabetes. *Diabetes Care*. 2006; 29:1545–1553. DOI: 10.2337/dc05-2462 [PubMed: 16801577]
178. Basaria S, Harman SM, Travison TG, Hodis H, Tsitouras P, Budoff M, Pencina KM, Vita J, Dzekov C, Mazer NA, et al. Effects of Testosterone Administration for 3 Years on Subclinical Atherosclerosis Progression in Older Men With Low or Low-Normal Testosterone Levels: A Randomized Clinical Trial. *JAMA*. 2015; 314:570–581. DOI: 10.1001/jama.2015.8881 [PubMed: 26262795]
179. Xiang AH, Peters RK, Kjos SL, Ochoa C, Marroquin A, Goico J, Tan S, Wang C, Azen SP, Liu C-r, et al. Effect of thiazolidinedione treatment on progression of subclinical atherosclerosis in premenopausal women at high risk for type 2 diabetes. *J Clin Endocrinol Metab*. 2005; 90:1986–1991. DOI: 10.1210/jc.2004-1685 [PubMed: 15623809]
180. Tasi IS, Mijalkovi D, Djordjevi D, Lovi B, Jankovi D, Miladinovi -Tasi N, Lovi M. Effect of fosinopril on progression of the asymptomatic carotid atherosclerosis and left ventricular hypertrophy in hypertensive patients. *Srp Arh Celok Lek*. 2006; 134:106–113. DOI: 10.2298/SARH0604106T [PubMed: 16915750]
181. Hodis HN, Mack WJ, LaBree L, Mahrer PR, Sevanian A, Liu C-r, Liu C-h, Hwang J, Selzer RH, Azen SP. Alpha-tocopherol supplementation in healthy individuals reduces low-density lipoprotein oxidation but not atherosclerosis: the Vitamin E Atherosclerosis Prevention Study (VEAPS). *Circulation*. 2002; 106:1453–1459. DOI: 10.1161/01.CIR.0000029092.99946.08 [PubMed: 12234947]
182. Rosei EA, Dal Palù C, Leonetti G, Magnani B, Pessina A, Zanchetti A. Clinical results of the Verapamil in Hypertension and Atherosclerosis Study. *VHAS Investigators. J Hypertens*. 1997; 15:1337–1344. DOI: 10.1097/00004872-199715110-00019 [PubMed: 9383184]

183. Zanchetti A, Rosei EA, Dal Palù C, Leonetti G, Magnani B, Pessina A. The Verapamil in Hypertension and Atherosclerosis Study (VHAS): results of long-term randomized treatment with either verapamil or chlorthalidone on carotid intima-media thickness. *J Hypertens*. 1998; 16:1667–1676. DOI: 10.1097/00004872-199816110-00014 [PubMed: 9856368]
184. Mourer JS, de Koning EJP, van Zwet EW, Mallat MJK, Rabelink TJ, de Fijter JW. Impact of late calcineurin inhibitor withdrawal on ambulatory blood pressure and carotid intima media thickness in renal transplant recipients. *Transplantation*. 2013; 96:49–57. DOI: 10.1097/TP.0b013e3182958552 [PubMed: 23715049]
185. Nieuwkerk PT, Nierman MC, Vissers MN, Locadia M, Greggers-Peusch P, Knappe LPM, Kastelein JJP, Sprangers MAG, de Haes HC, Stroes ESG. Intervention to improve adherence to lipid-lowering medication and lipid-levels in patients with an increased cardiovascular risk. *Am J Cardiol*. 2012; 110:666–672. DOI: 10.1016/j.amjcard.2012.04.045 [PubMed: 22621795]
186. Hodis HN, Mack WJ, Kono N, Azen SP, Shoupe D, Hwang-Levine J, Petitti D, Whitfield-Maxwell L, Yan M, Franke AA, et al. Isoflavone soy protein supplementation and atherosclerosis progression in healthy postmenopausal women: a randomized controlled trial. *Stroke*. 2011; 42:3168–3175. DOI: 10.1161/STROKEAHA.111.620831 [PubMed: 21903957]
187. Yang M, Luo Y, Liu T, Zhong X, Yan J, Huang Q, Tao J, He Q, Guo M, Hu Y. The Effect of Puerarin on Carotid Intima-media Thickness in Patients With Active Rheumatoid Arthritis: A Randomized Controlled Trial. *Clin Ther*. 2018; 40:1752–1764.e1. DOI: 10.1016/j.clinthera.2018.08.014 [PubMed: 30245282]
188. Yun P, Du A-m, Chen X-j, Liu J-c, Xiao H. Effect of Acarbose on Long-Term Prognosis in Acute Coronary Syndromes Patients with Newly Diagnosed Impaired Glucose Tolerance. *J Diabetes Res*. 2016; 2016:1602083.doi: 10.1155/2016/1602083 [PubMed: 26770983]
189. Zou Z-Y, Xu X-R, Lin X-M, Zhang H-B, Xiao X, Ouyang L, Huang Y-M, Wang X, Liu Y-Q. Effects of lutein and lycopene on carotid intima-media thickness in Chinese subjects with subclinical atherosclerosis: a randomised, double-blind, placebo-controlled trial. *Br J Nutr*. 2014; 111:474–480. DOI: 10.1017/S0007114513002730 [PubMed: 24047757]
190. Den Ruijter HM, Peters SAE, Anderson TJ, Britton AR, Dekker JM, Eijkemans MJ, Engström G, Evans GW, de Graaf J, Grobbee DE, et al. Common carotid intima-media thickness measurements in cardiovascular risk prediction: a meta-analysis. *JAMA*. 2012; 308:796–803. DOI: 10.1001/jama.2012.9630 [PubMed: 22910757]
191. Polak JF, Pencina MJ, Pencina KM, O'Donnell CJ, Wolf PA, D'Agostino RB SR. Carotid-wall intima-media thickness and cardiovascular events. *N Engl J Med*. 2011; 365:213–221. DOI: 10.1056/NEJMoa1012592 [PubMed: 21774709]
192. Lorenz MW, Markus HS, Bots ML, Rosvall M, Sitzer M. Prediction of clinical cardiovascular events with carotid intima-media thickness: a systematic review and meta-analysis. *Circulation*. 2007; 115:459–467. DOI: 10.1161/CIRCULATIONAHA.106.628875 [PubMed: 17242284]
193. Lorenz MW, Price JF, Robertson C, Bots ML, Polak JF, Poppert H, Kavousi M, Dörr M, Stensland E, Ducimetiere P, et al. Carotid Intima-Media Thickness Progression and Risk of Vascular Events in People With Diabetes: Results From the PROG-IMT Collaboration. *Diabetes Care*. 2015; 38:1921–1929. DOI: 10.2337/dc14-2732 [PubMed: 26180107]
194. Lorenz MW, Gao L, Ziegelbauer K, Norata GD, Empana JP, Schmidtmann I, Lin H-J, McLachlan S, Bokemark L, Ronkainen K, et al. Predictive value for cardiovascular events of common carotid intima media thickness and its rate of change in individuals at high cardiovascular risk - Results from the PROG-IMT collaboration. *PLoS One*. 2018; 13:e0191172.doi: 10.1371/journal.pone.0191172 [PubMed: 29649236]
195. Bots ML, Evans GW, Tegeler CH, Meijer R. Carotid Intima-media Thickness Measurements: Relations with Atherosclerosis, Risk of Cardiovascular Disease and Application in Randomized Controlled Trials. *Chin Med J*. 2016; 129:215–226. DOI: 10.4103/0366-6999.173500 [PubMed: 26830994]
196. Peters SAE, Grobbee DE, Bots ML. Carotid intima-media thickness: a suitable alternative for cardiovascular risk as outcome? *Eur J Cardiovasc Prev Rehabil*. 2011; 18:167–174. DOI: 10.1177/1741826710389400 [PubMed: 21568017]

197. Pignoli P, Tremoli E, Poli A, Oreste P, Paoletti R. Intimal plus medial thickness of the arterial wall: a direct measurement with ultrasound imaging. *Circulation*. 1986; 74:1399–1406. DOI: 10.1161/01.cir.74.6.1399 [PubMed: 3536154]
198. Dogan S, Plantinga Y, Crouse JR, Evans GW, Raichlen JS, O'Leary DH, Palmer MK, Grobbee DE, Bots ML. Algorithms to measure carotid intima-media thickness in trials: a comparison of reproducibility, rate of progression and treatment effect. *J Hypertens*. 2011; 29:2181–2193. DOI: 10.1097/HJH.0b013e32834b0eba [PubMed: 21918474]
199. Touboul P-J, Hennerici MG, Meairs S, Adams H, Amarenco P, Bornstein N, Csiba L, Desvarieux M, Ebrahim S, Hernandez Hernandez R, et al. Mannheim carotid intima-media thickness and plaque consensus (2004-2006-2011). *Cerebrovasc Dis*. 2012; 34:290–296. DOI: 10.1159/000343145 [PubMed: 23128470]
200. Huang R, Mills K, Romero J, Li Y, Hu Z, Cao Y, Huang H, Xu Y, Jiang L. Comparative effects of lipid lowering, hypoglycemic, antihypertensive and antiplatelet medications on carotid artery intima-media thickness progression: a network meta-analysis. *Cardiovasc Diabetol*. 2019; 18:14. doi: 10.1186/s12933-019-0817-1 [PubMed: 30700294]
201. Wang C-Y, Liu P-Y, Liao JK. Pleiotropic effects of statin therapy: molecular mechanisms and clinical results. *Trends Mol Med*. 2008; 14:37–44. DOI: 10.1016/j.molmed.2007.11.004 [PubMed: 18068482]
202. Catapano AL, Pirillo A, Norata GD. Vascular inflammation and low-density lipoproteins: is cholesterol the link? A lesson from the clinical trials. *Br J Pharmacol*. 2017; 174:3973–3985. DOI: 10.1111/bph.13805 [PubMed: 28369752]
203. Chinetti-Gbaguidi G, Fruchart JC, Staels B. Pleiotropic effects of fibrates. *Curr Atheroscler Rep*. 2005; 7:396–401. DOI: 10.1007/s11883-005-0053-x [PubMed: 16105484]
204. Florentin M, Liberopoulos EN, Kei A, Mikhailidis DP, Elisaf MS. Pleiotropic effects of nicotinic acid: beyond high density lipoprotein cholesterol elevation. *Curr Vasc Pharmacol*. 2011; 9:385–400. DOI: 10.2174/157016111796197279 [PubMed: 21314635]
205. Yamaoka-Tojo M, Tojo T, Izumi T. Beyond cholesterol lowering: pleiotropic effects of bile acid binding resins against cardiovascular disease risk factors in patients with metabolic syndrome. *Curr Vasc Pharmacol*. 2008; 6:271–281. DOI: 10.2174/157016108785909698 [PubMed: 18855715]
206. Papazafiropoulou AK, Kardara MS, Pappas SI. Pleiotropic effects of omega-3 fatty acids. *Recent Pat Endocr Metab Immune Drug Discov*. 2012; 6:40–46. DOI: 10.2174/187221412799015254 [PubMed: 22280222]
207. Scheen AJ, Esser N, Paquot N. Antidiabetic agents: Potential anti-inflammatory activity beyond glucose control. *Diabetes Metab*. 2015; 41:183–194. DOI: 10.1016/j.diabet.2015.02.003 [PubMed: 25794703]
208. Desouza CV, Gupta N, Patel A. Cardiometabolic Effects of a New Class of Antidiabetic Agents. *Clin Ther*. 2015; 37:1178–1194. DOI: 10.1016/j.clinthera.2015.02.016 [PubMed: 25754876]
209. Yun S, Vincelette ND, Abraham I. Cardioprotective role of β -blockers and angiotensin antagonists in early-onset anthracyclines-induced cardiotoxicity in adult patients: a systematic review and meta-analysis. *Postgrad Med J*. 2015; 91:627–633. DOI: 10.1136/postgradmedj-2015-133535 [PubMed: 26399268]
210. Schulman IH, Zachariah M, Raj L. Calcium channel blockers, endothelial dysfunction, and combination therapy. *Aging Clin Exp Res*. 2005; 17:40–45. [PubMed: 16640172]
211. Preston Mason R. Pleiotropic effects of calcium channel blockers. *Curr Hypertens Rep*. 2012; 14:293–303. DOI: 10.1007/s11906-012-0269-4 [PubMed: 22610475]
212. Webb AJS, Fischer U, Mehta Z, Rothwell PM. Effects of antihypertensive-drug class on interindividual variation in blood pressure and risk of stroke: a systematic review and meta-analysis. *Lancet*. 2010; 375:906–915. DOI: 10.1016/S0140-6736(10)60235-8 [PubMed: 20226989]
213. Touboul P-J, Hennerici MG, Meairs S, Adams H, Amarenco P, Desvarieux M, Ebrahim S, Fatar M, Hernandez Hernandez R, Kownator S, et al. Mannheim intima-media thickness consensus. *Cerebrovasc Dis*. 2004; 18:346–349. DOI: 10.1159/000081812 [PubMed: 15523176]

214. Bujkiewicz S, Thompson JR, Spata E, Abrams KR. Uncertainty in the Bayesian meta-analysis of normally distributed surrogate endpoints. *Stat Methods Med Res.* 2017; 26:2287–2318. DOI: 10.1177/0962280215597260 [PubMed: 26271918]

Clinical Perspective

What Is New?

- We analyzed data of 119 randomized controlled trials that involved 100,667 patients and 12,038 incident cardiovascular disease events.
- We used a Bayesian meta-regression approach to evaluate progression of carotid intima-media thickness as a surrogate marker for cardiovascular events.
- Our analysis revealed a statistically significant association between treatment effects on progression of carotid intima-media thickness and treatment effects on cardiovascular disease risk.

What Are the Clinical Implications?

- Our paper provides the key missing link supporting the usefulness of carotid intima-media thickness progression as a surrogate marker for cardiovascular disease risk in clinical trials.
- Using progression of carotid intima-media thickness as a surrogate endpoint in future randomized controlled trials may facilitate and speed up the development and licensing of new therapies.

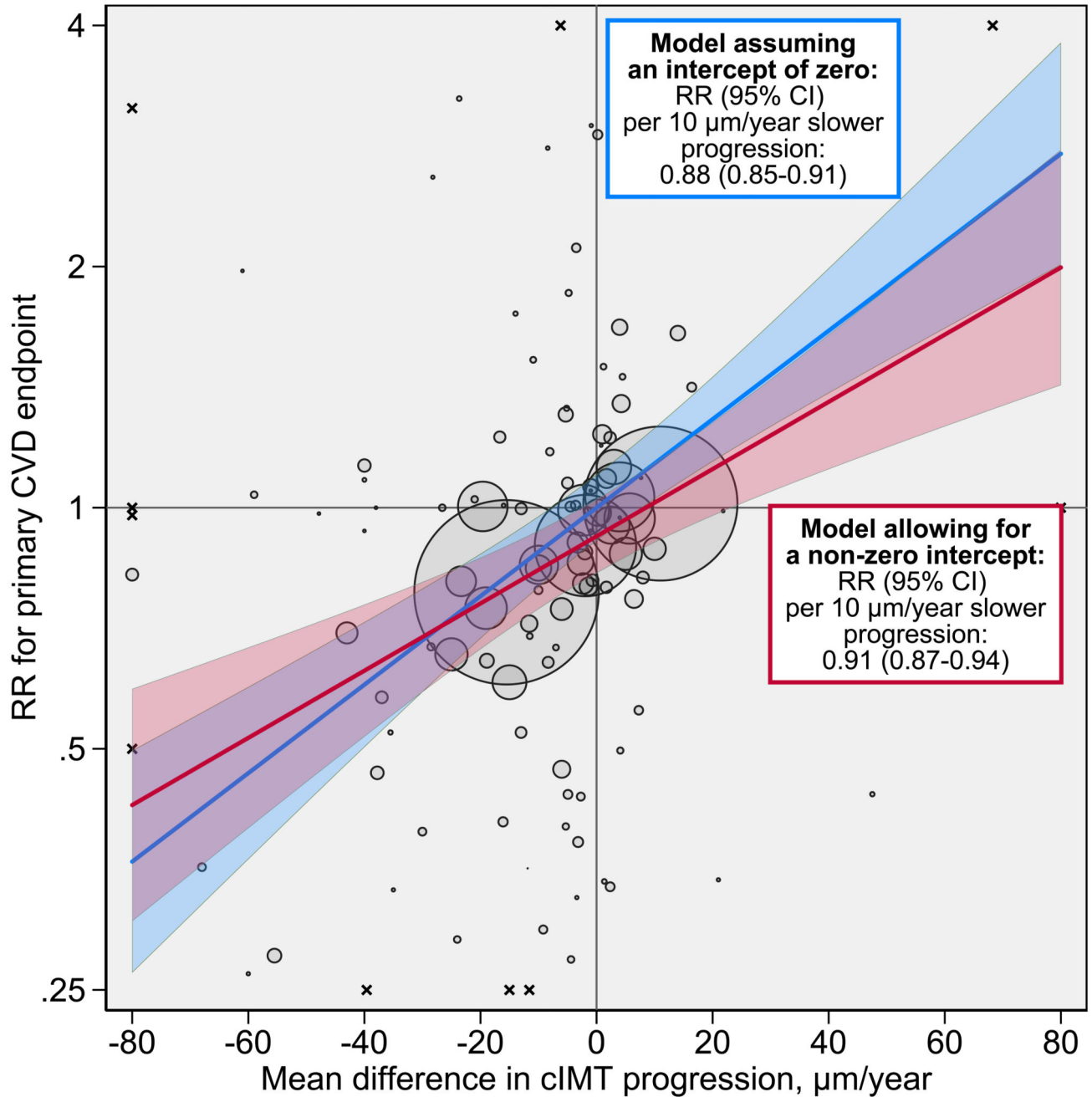


Figure 1. Intervention effects on cIMT progression plotted against intervention effects on risk for the primary CVD endpoint.

The intercept of the primary model was 0.92 (95% CI 0.87-0.97). Each bubble represents a trial. Trials with point estimates outside of this area are indicated with the symbol x. The areas of the bubbles are proportional to the inverse variance of the log relative risk for the primary CVD endpoint. The shaded areas around lines-of-fit are 95% prediction intervals. For purpose of presentation, the graph area was limited to -80 to 80 $\mu\text{m}/\text{year}$ on the horizontal axis and 0.25 to 4 on the vertical axis. Abbreviations: CI=credible interval. cIMT=carotid intima-media thickness. CVD=cardiovascular disease. RR=relative risk.

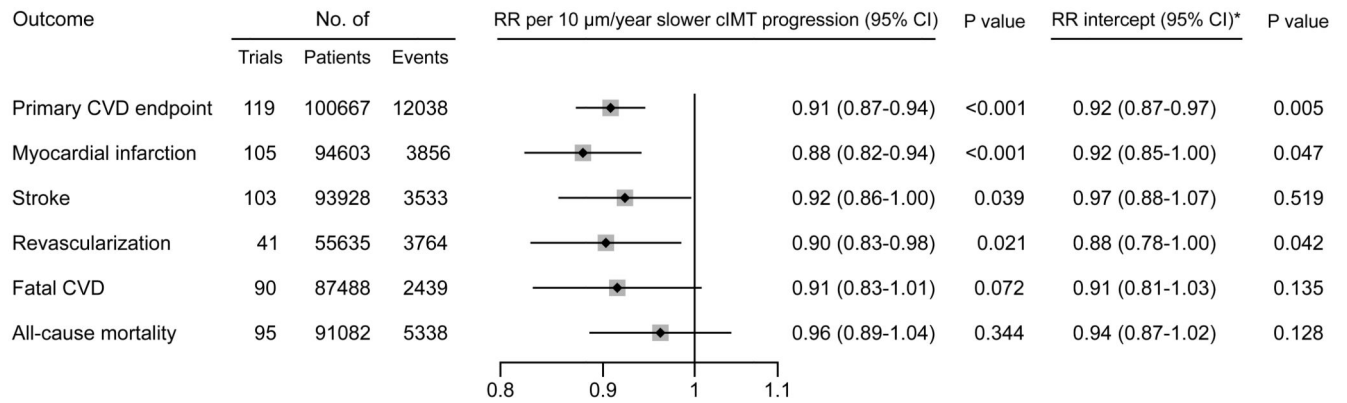


Figure 2. Intervention effects on risk for individual CVD endpoints and all-cause mortality per 10 $\mu\text{m}/\text{year}$ slower cIMT progression.

*The RRs for intercepts are the effects achieved independent of cIMT progression.

Abbreviations: CI=credible interval. cIMT=carotid intima-media thickness.

CVD=cardiovascular disease. RR=relative risk.

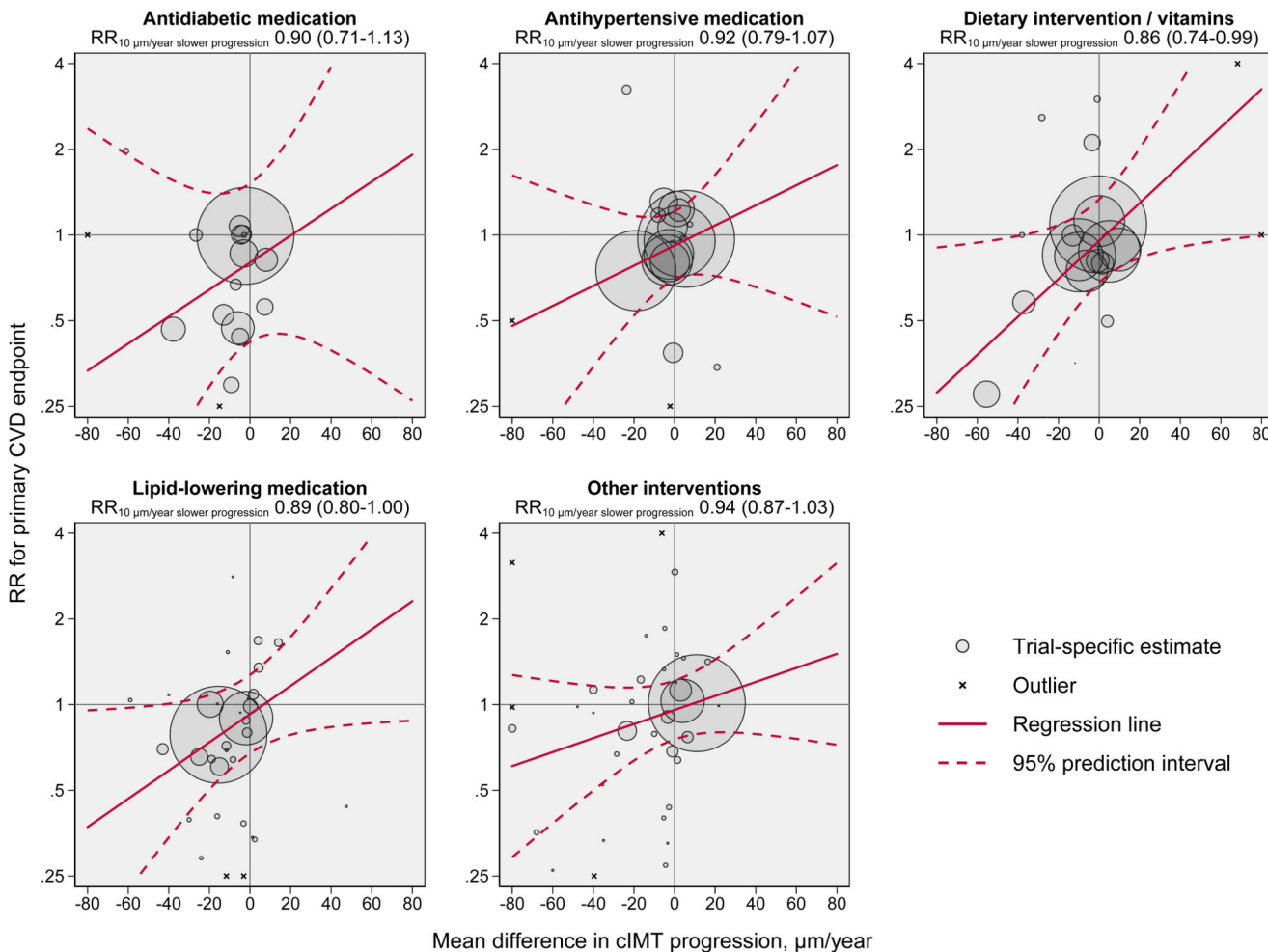


Figure 3. Intervention effects on cIMT progression plotted against intervention effects on risk for the primary CVD endpoint, according to type of intervention.

The RRs for intercepts as well as *P* values for heterogeneity of intercept and slope are provided in Figure 4. The areas of the bubbles are proportional to the inverse variance of the log relative risk for the primary CVD endpoint. For purpose of presentation, the graph area was limited to -80 to 80 $\mu\text{m}/\text{year}$ on the horizontal axis and 0.25 to 4 on the vertical axis.

Trials with point estimates outside of this area are indicated with the symbol x.

Abbreviations: cIMT=carotid intima-media thickness. CVD=cardiovascular disease.

RR=relative risk.

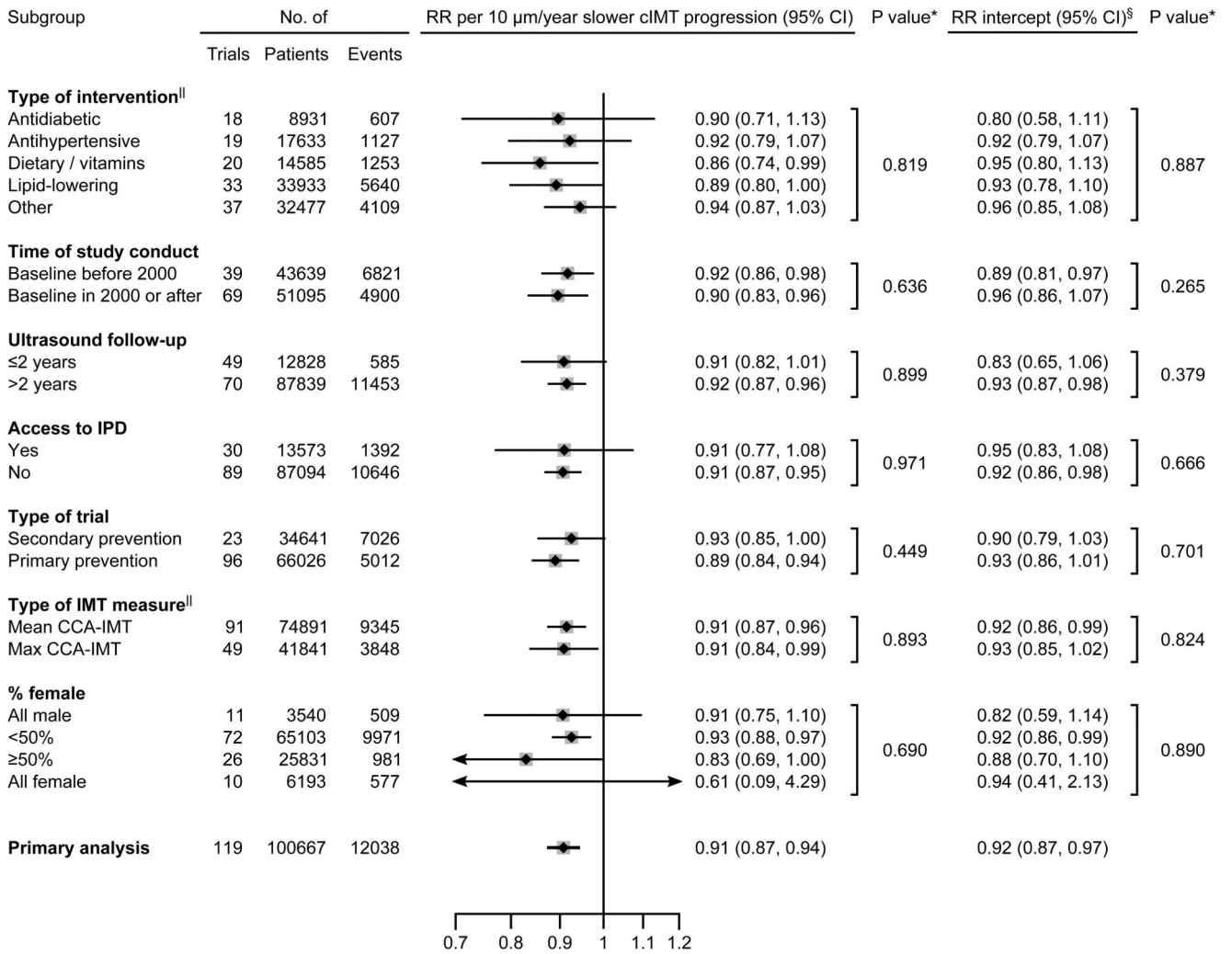


Figure 4. Intervention effects on risk for the primary CVD endpoint per 10 $\mu\text{m}/\text{year}$ slower cIMT progression, according to trial characteristics.

Abbreviations: CCA-IMT=intima-media thickness of the common-carotid-artery.

CI=credible interval. cIMT=carotid intima-media thickness. IPD=individual-participant

data. RR=relative risk. *P values for heterogeneity. §The RRs for intercepts are the effects achieved independent of cIMT progression.^{||}Numbers of trials across some subgroups do not

sum up to 119 because of missing information or contribution of trials to multiple subgroups.

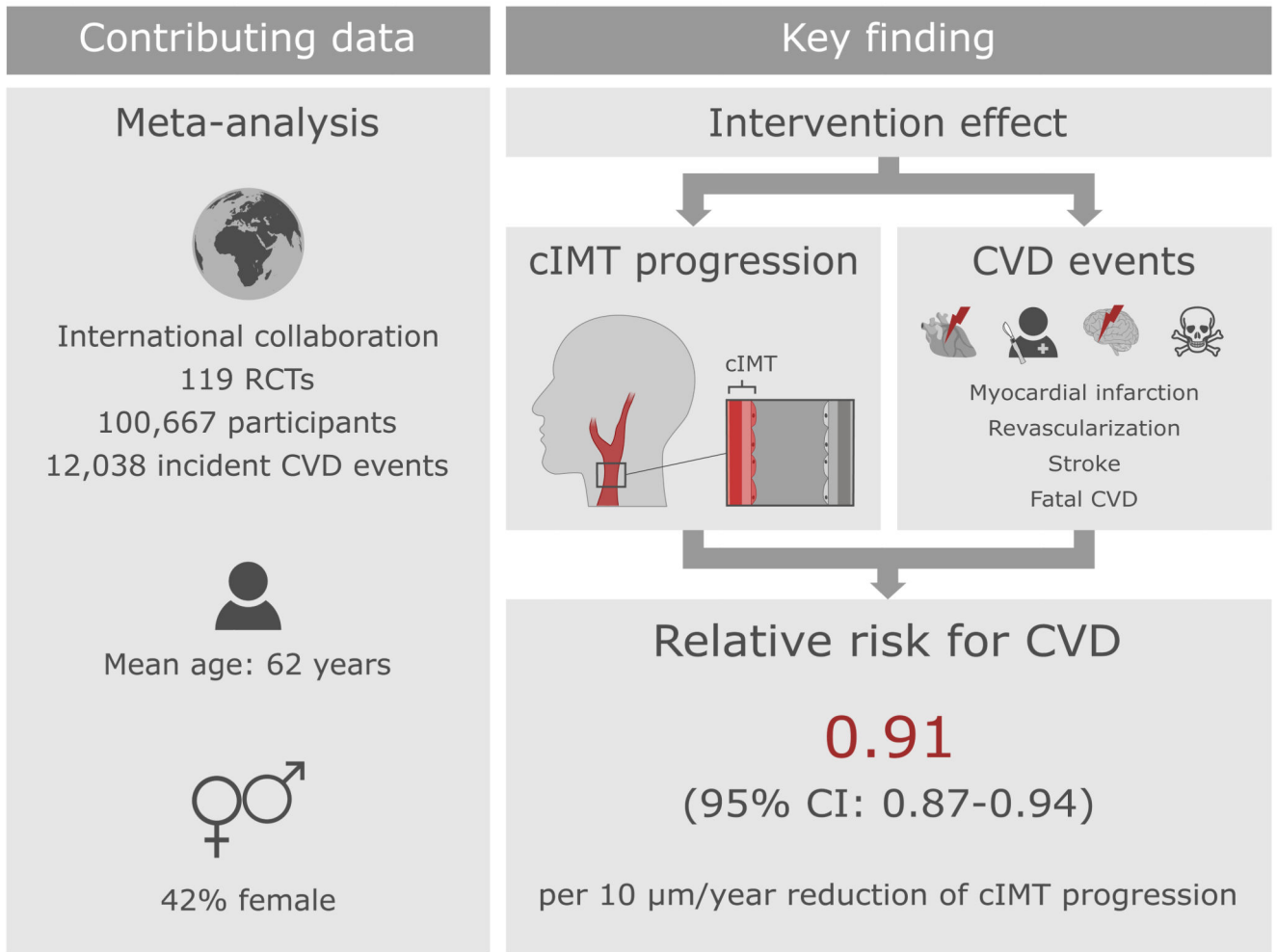


Figure 5. Summary of key findings of our study.

Abbreviations: CI=credible interval. cIMT=carotid intima-media thickness.

CVD=cardiovascular disease. RCTs= randomized controlled trials.

Table 1

Key features of the trials included in this report

Trial	Years of baseline	Country	Access to IPD	No. of trial arms	Type of intervention*							CVD risk					cIMT progression			
					Antidiabetic	Antihypertensive	Dietary / vitamins	Lipid-lowering	Other	No. of patients	Type of population	Mean age (SD), years	% female	Median follow-up, years	No. of events	Maximum follow-up, years	% with cIMT data	Mean CCA-IMT	Max CCA-IMT	Other cIMT
ACAPS ^{16,17}	1989-1990	USA	●	2x2	-	-	-	●	●	919	Elevated CVD risk	62 (8)	48	5.0	18	6.0	100	-	●	-
ACT NOW ^{18,19}	2004-2006	USA	-	2	●	-	-	-	-	602	Dysglycemia	52 (10)	58	2.2 [†]	13	4.0	63	●	-	-
ALLO-IMT ²⁰	2009-2010	UK	●	2	-	-	-	●	●	80	Pre-existing CVD	68 (10)	43	1.0	11	1.2	100	●	●	-
AMAR ²¹	2004-2005	Russia	-	2	-	-	●	-	-	257	Elevated CVD risk	61 (9)	0	2.0 [‡]	21	2.0	76	●	-	-
ARBITER ²²	1999-2001	USA	-	2	-	-	-	●	-	161	Elevated CVD risk	60 (12)	29	1.0 [‡]	6	1.0	86	●	●	-
ARBITER 2 ²³	2001-2003	USA	-	2	-	-	-	●	-	167	Pre-existing CVD	67 (10)	9	1.0 [‡]	10	1.0	89	●	-	-
ARBITER 6-HALTS ^{6,24,25}	2006-2009	USA	-	2	-	-	-	●	-	363	Pre-existing CVD	65 (10)	20	1.2 [‡]	11	1.2	57	●	●	-
ARTSTIFF ²⁶	2008-2011	International	-	3	-	●	-	-	-	133	Hypertension	53 (10)	37	1.0 [‡]	0	1.0	87	●	-	-
ASAP-FINLAND ²⁷⁻²⁹	1994-1995	Finland	-	2	-	-	●	-	-	520	Hyperlipidemia	60 (6)	51	6.0 [‡]	22	6.0	85	●	-	-
ASAP-NL ^{30,31}	1997-1998	Netherlands	-	2	-	-	●	-	-	330	Hyperlipidemia	49 (11)	61	2.0 [‡]	5	2.0	85	●	-	-
ASFAST ³²	1998-2000	International	-	2	-	-	●	-	-	315	Kidney disease	56 (13)	32	3.3 [‡]	73	3.6	77	-	●	-
ATC ^{33,34}	2001-2002	Netherlands	-	2	-	-	-	●	-	93	Kidney disease	53 (12)	43	2.0 [‡]	4	1.5	80	●	-	-
Ahn et al. ³⁵	2005-2006	Korea	-	2	-	-	-	●	-	130	Pre-existing CVD	64 (11)	38	2.0 [‡]	18	2.0	73	-	-	●
Andrews et al. ^{36,37}	2011-2015	USA	-	2	-	-	-	●	-	80	Kidney disease	57 (12)	20	0.2 [‡]	1	0.2	79	●	-	-
BCAPS ³⁸	1994-1996	Sweden	-	2x2	-	●	-	-	-	793	Elevated CVD risk	62 (5)	54	3.0 [‡]	18	3.0	99	●	-	-

Trial	Years of baseline	Country	Access to IPD	No. of trial arms	Type of intervention*						CVD risk						cIMT progression			
					Antidiabetic	Antihypertensive	Dietary/vitamins	Lipid-lowering	Other	No. of patients	Type of population	Mean age (SD), years	% female	Median follow-up, years	No. of events	Maximum follow-up, years	% with cIMT data	Mean CCA-IMT	Max CCA-IMT	Other cIMT
BKREGISTRY-IP ³⁹	2000-2003	Korea	●	2	-	-	-	-	●	-	205	Pre-existing CVD	60 (10)	32	0.5	3	1.1	59	●	-
BVAIT ⁴⁰	2000-2006	USA	-	2	-	-	●	-	-	506	General population	61 (10)	39	3.1 [†]	20	2.5	97	●	-	
CAIUS ⁴¹	1991-1992	Italy	-	2	-	-	-	-	●	305	Hyperlipidemia	55 (6)	47	3.0 [†]	5	3.0	100	-	●	
CAMERA ⁴²	2009-2011	UK	●	2	●	-	-	-	-	173	Pre-existing CVD	63 (8)	23	1.5	12	2.3	100	●	-	
CAPPA ⁴³	2009	Korea	-	2	-	-	-	-	●	420	Dysglycemia	60 (9)	50	3.0 [†]	6	3.0	99	●	●	
CAPTIVATE ⁴⁴	2004-2005	International	-	2	-	-	-	-	●	892	Hyperlipidemia	55 (9)	39	2.0 [†]	32	1.0	99	-	●	
CERDIA ⁴⁵	1999-2001	Netherlands	●	2	-	-	-	-	●	250	Dysglycemia	58 (11)	53	2.1	14	2.5	99	●	●	
CHICAGO ⁴⁶	2003-2005	USA	-	2	●	-	-	-	-	462	Dysglycemia	60 (8)	37	1.4 [†]	13	1.4	78	●	●	
CIMT phase I ^{47,48}	2008-2009	Denmark	-	2	●	-	-	-	-	412	Dysglycemia	61 (9)	32	1.5 [†]	20	1.5	100	●	●	
CLAS ⁴⁹⁻⁵¹	1980-1984	USA	-	2	-	-	-	-	●	162	Pre-existing CVD	54 (5)	0	7.0 [†]	82	4.0	48	●	-	
CONTRAST ^{52,53}	2004-2009	Netherlands	●	2	-	-	-	-	●	714	Kidney disease	64 (14)	38	2.4	173	3.1	20	●	●	
Cao et al. ⁵⁴	2008-2011	China	-	2	-	-	●	-	-	287	Elevated CVD risk	71 (13)	53	2.0 [†]	36	2.0	100	-	●	
DAPC ^{55,56}	2004-2006	International	-	2	-	-	-	-	●	329	Dysglycemia	64 (7)	48	2.0 [†]	3	2.0	90	●	●	
DAPHNE ⁵⁷	NR	Netherlands	-	2	-	-	-	●	-	80	Pre-existing CVD	59 (7)	0	3.0 [†]	16	3.0	100	-	●	
DOIT ⁵⁸	1997-1999	Norway	-	2	-	-	●	-	-	561	Elevated CVD risk	70 (5)	0	3.0 [†]	63	3.0	83	●	-	
EGE STUDY ^{59,60}	2005-2006	Turkey	●	2x2	-	-	-	-	●	644	Kidney disease	59 (14)	46	3.0	60	3.0	100	●	-	
ELITE (early MP) ^{61,62}	2005-2008	USA	-	2	-	-	-	-	●	271	General population	55 (4)	100	5.0	1	5.0	92	●	-	
ELITE (late MP) ^{61,62}	2005-2008	USA	-	2	-	-	-	-	●	372	General population	65 (6)	100	5.0	5	5.0	94	●	-	

Trial	Years of baseline	Country	Access to IPD	No. of trial arms	Type of intervention*						CVD risk					cIMT progression			
					Antidiabetic	Antihypertensive	Dietary/vitamins	Lipid-lowering	Other	No. of patients	Type of population	Mean age (SD), years	% female	Median follow-up, years	No. of events	Maximum follow-up, years	% with cIMT data	Mean CCA-IMT	Max CCA-IMT
ELSA ⁶³	NR	International	-	2	-	-	-	-	-	2334	Hypertension	56 (7)	45	4.0 [‡]	60	4.0	87	-	●
ELVA ⁶⁴	NR	Sweden	-	2	-	●	-	-	-	129	Hyperlipidemia	60 (10)	49	3.0 [‡]	4	3.0	71	●	-
ENCORE ^{65,66}	2003-2008	USA	●	3	-	-	●	-	-	144	Elevated CVD risk	52 (10)	67	0.4	1	1.1	98	●	-
ENHANCE ⁶⁷	2002-2004	International	●	2	-	-	●	-	720	Hyperlipidemia	47 (9)	49	2.0	52	2.3	100	●	-	
EPAT ⁶⁸	1994-1998	USA	-	2	-	-	-	●	222	Hyperlipidemia	61 (7)	100	2.0 [‡]	7	2.0	90	●	-	
FIELD ^{69,70}	1998-2000	International	-	2	-	-	●	-	9795	Dysglycemia	62 (7)	37	6.0 [‡]	1295	5.0	2	-	●	
FIRST ^{71,72}	2008-2010	USA	-	2	-	-	●	-	682	Pre-existing CVD	61 (9)	32	2.1 [‡]	30	2.0	84	-	●	
FRANCIS ^{73,74}	2011-2012	Netherlands	-	2	-	-	-	●	320	Elevated CVD risk	53 (11)	70	5.0 [‡]	9	5.0	100	●	-	
GRACE ⁷⁵	2003-2005	International	●	2x2	●	-	-	-	1189	Dysglycemia	63 (8)	36	5.8	374	5.1	100	●	-	
Gresele et al. ⁷⁶	2003-2005	International	●	2	-	-	-	●	442	Pre-existing CVD	67 (9)	21	0.6	8	0.6	57	●	-	
HART ⁷⁷	1999-2000	International	●	2	-	-	●	-	925	Pre-existing CVD	69 (7)	24	5.0	152	5.6	100	●	-	
HERS ^{78,79}	1993-1994	USA	-	2	-	-	-	●	2763	General population	67 (7)	100	4.1 [‡]	552	4.7	16	-	●	
HYRIM ⁸⁰	1997-1999	Norway	●	2x2	-	-	●	●	568	Hypertension	57 (9)	0	4.1	47	4.6	99	-	●	
INSIGHT ⁸¹⁻⁸³	1994-1996	France	-	2	-	-	-	●	6321	Elevated CVD risk	65 (7)	54	3.5 [‡]	347	4.0	5	●	-	
J-STARS ⁸⁴⁻⁸⁸	2004-2009	Japan	-	2	-	-	●	-	1589	Pre-existing CVD	66 (8)	31	4.9 [‡]	290	5.0	50	●	-	
JART ⁸⁹	2008-2010	Japan	-	2	-	-	●	-	348	Hyperlipidemia	64 (9)	51	2.0 [‡]	9	2.0	40	●	-	
KAPS ⁹⁰	1984-1989	Finland	-	2	-	-	●	-	447	Hyperlipidemia	57 (4)	0	3.0 [‡]	28	3.0	95	-	●	
KEEPS ⁹¹	2005-2008	USA	-	3	-	-	-	●	727	General population	53 (3)	100	4.0 [‡]	1	4.0	100	●	-	
KIMVASC ⁹²	2011-2012	UK	●	2	-	-	●	-	80	Pre-existing CVD	77 (5)	45	0.5	1	0.5	99	●	-	

Trial	Years of baseline	Country	Access to IPD	No. of trial arms	Type of intervention*						CVD risk					cIMT progression			
					Antidiabetic	Antihypertensive	Dietary/vitamins	Lipid-lowering	Other	No. of patients	Type of population	Mean age (SD), years	% female	Median follow-up, years	No. of events	Maximum follow-up, years	% with cIMT data	Mean CCA-IMT	Max CCA-IMT
Katakami et al. ⁹³	1998	Japan	-	3	●	-	-	-	-	159	Dysglycemia	61 (9)	51	3.3 [‡]	0	3.3	74	-	●
Koyasu et al. ⁹⁴	2006-2008	Japan	-	2	●	-	-	-	-	90	Pre-existing CVD	66 (8)	9	1.0 [‡]	0	1.0	90	-	●
LAARS95	NR	International	-	2	-	●	-	-	-	280	Hypertension	59 (9)	50	2.0 [‡]	0	2.0	72	-	●
LIFE-ICARUS ⁹⁶	1996-1997	International	●	2	-	●	-	-	-	83	Hypertension	67 (6)	27	4.9	8	3.1	98	-	●
LIPID ⁹⁷⁻¹⁰⁰	1990-1992	International	-	2	-	-	●	-	-	9014	Pre-existing CVD	61 (8)	17	6.1 [‡]	3229	4.0	4	-	●
Luijendijk et al. ^{101,102}	2007-2009	Netherlands	-	2	-	-	●	-	-	155	Pre-existing CVD	36 (12)	38	3.3 [‡]	0	4.4	100	-	●
MARS ^{103,104}	1985-1989	USA	-	2	-	-	●	-	-	270	Hyperlipidemia	58 (7)	9	2.2 [‡]	54	4.0	27	-	●
MAVET ¹⁰⁵	1994-1995	Australia	-	2	-	●	-	-	-	409	Elevated CVD risk	64 (6)	55	4.0 [‡]	6	4.0	81	-	●
MECANO ^{106,107}	2005-2006	Netherlands	-	2	-	-	-	●	-	185	Kidney disease	51 (13)	36	1.5 [‡]	6	2.0	88	-	●
MEDICLAS ^{108,109}	2003-2005	Netherlands	●	2	-	-	-	●	-	48	Elevated CVD risk	42 (10)	0	3.0	1	3.2	77	-	●
METEOR ¹¹⁰	2002-2004	International	-	2	-	-	●	-	-	984	Elevated CVD risk	57 (6)	40	2.0 [‡]	3	2.0	89	-	●
MG600 ¹¹¹	2010-2011	Brazil	●	2	-	●	-	-	-	35	Hypertension	55 (7)	100	0.5	0	0.5	100	-	●
MIDAS ¹¹²	NR	USA	-	2	-	●	-	-	-	883	Hypertension	59 (9)	22	3.0 [‡]	47	3.0	100	-	●
MITEC ^{113,114}	2000-2002	France	-	2	-	●	-	-	-	209	Elevated CVD risk	60 (8)	36	3.0 [‡]	0	3.0	41	-	●
Makimura et al. ¹¹⁵	2008-2010	USA	-	2	-	-	-	●	-	60	Elevated CVD risk	41 (2)	35	1.0 [‡]	0	1.0	97	-	●
Masia et al. ¹¹⁶	2006-2007	Spain	●	2	-	-	-	●	-	68	Elevated CVD risk	52 (11)	10	6.0	4	6.9	99	-	●
Mitsubashi et al. ¹¹⁷	NR	Japan	-	2	-	-	-	●	-	62	Dysglycemia	63 (7)	35	2.6 [‡]	1	2.6	100	-	●
Mortazavi et al. ¹¹⁸	NR	Iran	-	2	-	●	-	-	-	54	Kidney disease	57 (12)	50	0.5 [‡]	1	0.5	96	-	●
NTPP ¹¹⁹	2005-2010	Japan	-	2	-	-	●	-	-	123	Elevated CVD risk	59 (9)	54	3.0 [‡]	0	3.0	79	-	●

Trial	Years of baseline	Country	Access to IPD	No. of trial arms	Type of intervention*						CVD risk					cIMT progression			
					Antidiabetic	Antihypertensive	Dietary/vitamins	Lipid-lowering	Other	No. of patients	Type of population	Mean age (SD), years	% female	Median follow-up, years	No. of events	Maximum follow-up, years	% with cIMT data	Mean CCA-IMT	Max CCA-IMT
Nakamura et al. ¹²⁰	2001	Japan	●	2	-	-	-	-	-	50	Kidney disease	53 (7)	40	6.9	8	4.1	100	●	-
Ntanos et al. ¹²¹	2005	Greece	●	2	-	-	●	-	-	103	Elevated CVD risk	73 (5)	45	1.5	18	1.5	100	●	-
OPAL ^{122,123}	1997-1999	International	●	3	-	-	-	-	●	866	General population	59 (7)	100	3.1	9	3.7	100	●	-
PART-2 ¹²⁴	NR	New Zealand	-	2	-	-	-	●	-	617	Pre-existing CVD	61 (8)	18	4.7 [†]	150	4.0	87	●	-
PEACE ¹²⁵	2007-2008	Japan	-	2	-	-	●	-	-	303	Hyperlipidemia	66 (9)	43	1.0 [‡]	2	1.0	74	●	-
PERFORM ^{126,127}	2006-2008	International	-	2	-	-	-	-	●	19120	Pre-existing CVD	67 (8)	37	2.4 [‡]	2910	3.0	5	●	-
PERIOCARDIO ¹²⁸	2010-2012	Australia	●	2	-	-	-	-	●	273	Elevated CVD risk	41 (10)	42	1.0	3	1.4	99	●	-
PHOREA ¹²⁹	1995-1996	Germany	-	3	-	-	-	-	●	321	General population	59 (4)	100	0.9 [‡]	1	0.9	54	-	●
PHYLLIS ^{130,131}	1995-1997	Italy	-	4	-	-	-	●	-	508	Elevated CVD risk	58 (7)	60	2.6 [‡]	6	2.6	82	-	●
PLAC II ¹³²⁻¹³⁴	1987-1990	USA	-	2	-	-	-	-	●	151	Elevated CVD risk	63 (NR)	15	3.0 [‡]	14	3.0	100	-	●
PPAR ¹³⁵	2002-2003	International	-	2	●	-	-	-	-	200	Elevated CVD risk	59 (10)	20	1.0 [‡]	17	1.0	100	-	●
PREDIMED ^{136,137}	2008-2009	Spain	-	3	-	-	●	-	-	7447	Elevated CVD risk	67 (6)	57	4.8	288	2.4	2	●	-
PREVEND IT ¹³⁸⁻¹⁴¹	1998-1999	Netherlands	●	2x2	-	-	-	●	-	864	Kidney disease	51 (12)	35	3.9	102	4.7	94	●	-
PREVENT ^{142,143}	1992-1997	International	-	2	-	-	-	●	-	825	Elevated CVD risk	57 (10)	20	3.0 [‡]	196	3.0	46	-	●
PROBE ^{144,145}	2002-2003	Japan	-	2	●	-	-	-	-	587	Dysglycemia	58 (NR)	37	4.0 [‡]	14	3.3	30	●	-
RADIANCE I ^{146,147}	2003-2004	International	●	2	-	-	-	-	●	904	Hyperlipidemia	46 (13)	51	2.0	44	2.3	98	●	-
RADIANCE II ^{147,148}	2004-2006	International	●	2	-	-	-	-	●	752	Hyperlipidemia	57 (8)	36	2.0	37	2.4	98	●	-

Trial	Years of baseline	Country	Access to IPD	No. of trial arms	Type of intervention*							CVD risk					cIMT progression				
					Antidiabetic	Antihypertensive	Dietary/vitamins	Lipid-lowering	Other	No. of patients	Type of population	Mean age (SD), years	% female	Median follow-up, years	No. of events	Maximum follow-up, years	% with cIMT data	Mean CCA-IMT	Max CCA-IMT	Other cIMT	
RAS ¹⁴⁹	2002-2003	Sweden	-	2	●	-	-	-	-	-	557	Elevated CVD risk	67 (6)	54	1.0 [‡]	5	1.0	80	●	-	-
REGRESS ^{150,151}	1989-1991	Netherlands	-	2	-	-	-	●	-	-	885	Elevated CVD risk	56 (8)	0	2.0 [‡]	148	2.0	29	●	-	-
REMOVAL ^{152,153}	2011-2014	International	-	2	●	-	-	-	-	-	428	Dysglycemia	56 (9)	41	3.0 [‡]	17	3.0	99	●	●	-
RIS ¹⁵⁴	1987-1989	Sweden	●	2	-	-	-	-	●	-	164	Elevated CVD risk	66 (5)	0	5.9	47	7.3	99	●	●	-
SANDS ¹⁵⁵⁻¹⁵⁷	2003-2004	USA	-	2	-	-	-	-	●	-	499	Elevated CVD risk	56 (9)	66	3.0 [‡]	18	3.0	100	●	-	-
SCIMO ^{158,159}	1992-1994	Germany	-	2	-	-	-	●	-	-	223	Elevated CVD risk	58 (9)	20	2.0 [‡]	55	2.0	77	-	●	-
SECURE ¹⁶⁰	1994-1995	Canada	●	3x2	-	●	-	-	●	-	731	Elevated CVD risk	66 (7)	24	4.4	103	5.3	100	-	●	-
SEKONA ¹⁶¹	2004-2005	Germany	-	2	-	-	-	-	●	-	600	Elevated CVD risk	49 (6)	11	3.0 [‡]	110	3.0	66	●	-	-
SENDCAP ¹⁶²	1990-1993	UK	-	2	-	-	-	●	-	-	164	Dysglycemia	51 (8)	29	3.0 [‡]	4	3.0	77	-	●	-
SPEAD-A ^{163,164}	2011-2013	Japan	-	2	●	-	-	-	-	-	341	Dysglycemia	65 (9)	42	2.0 [‡]	4	2.0	94	●	●	-
SPIKE ¹⁶⁵⁻¹⁶⁷	2012	Japan	-	2	●	-	-	-	-	-	282	Dysglycemia	64 (7)	40	2.0 [‡]	6	2.0	97	●	●	-
STARR ¹⁶⁸	2001-2003	International	●	2x2	●	-	-	-	-	-	1320	Dysglycemia	53 (11)	55	4.2	30	4.5	100	●	●	-
STOP-NIDDM ^{169,170}	1996-1998	Germany	-	2	●	-	-	-	-	-	1429	Dysglycemia	55 (8)	51	3.3 [‡]	47	3.9	8	●	-	-
Safarova et al. ¹⁷¹	2007-2009	Russia	●	2	-	-	-	●	-	-	60	Pre-existing CVD	55 (6)	0	3.0	40	2.8	100	●	-	-
Sander et al. (Cp neg) ^{172,173}	1995-1998	Germany	-	2	-	-	-	-	●	-	147	Pre-existing CVD	64 (12)	44	3.0 [‡]	9	2.0	100	●	-	-
Sander et al. (Cp pos) ^{172,173}	1995-1998	Germany	-	2	-	-	-	-	●	-	125	Pre-existing CVD	65 (14)	43	3.0 [‡]	19	2.0	100	●	-	-
Spring et al. ¹⁷⁴	NR	Switzerland	-	2	-	-	-	-	●	-	100	Pre-existing CVD	67 (11)	22	0.5 [‡]	2	0.5	89	●	-	-
Stanley et al. ¹⁷⁵	2011-2013	USA	-	2	-	-	-	-	●	-	50	Elevated CVD risk	51 (7)	16	0.5 [‡]	1	0.5	86	●	-	-

Trial	Years of baseline	Country	Access to IPD	No. of trial arms	Type of intervention*						CVD risk					cIMT progression				
					Antidiabetic	Antihypertensive	Dietary/vitamins	Lipid-lowering	Other	No. of patients	Type of population	Mean age (SD), years	% female	Median follow-up, years	No. of events	Maximum follow-up, years	% with cIMT data	Mean CCA-IMT	Max CCA-IMT	Other cIMT
Stanton et al. ¹⁷⁶	NR	UK	-	2	-	●	-	-	-	69	Hypertension	48 (11)	41	1.0 [‡]	1	1.0	80	●	-	
TART ¹⁷⁷	1997-1998	USA	-	2	●	-	-	-	-	299	Dysglycemia	52 (9)	66	2.0	12	2.0	92	●	-	
TEAAM ¹⁷⁸	2004-2009	USA	-	2	-	-	-	●	-	308	General population	68 (5)	0	3.0 [‡]	16	3.0	99	●	-	
TRIPOD ¹⁷⁹	1995-1998	USA	-	2	●	-	-	-	-	266	Dysglycemia	34 (7)	100	2.9	0	4.0	72	●	-	
Tasic et al. ¹⁸⁰	NR	Serbia	-	2	-	●	-	-	-	40	Hypertension	64 (9)	35	0.8 [‡]	6	0.8	100	●	-	
VEAPS ¹⁸¹	1996-1999	USA	-	2	-	-	●	-	-	353	Hyperlipidemia	56 (9)	52	3.0 [‡]	18	3.0	94	●	-	
VHAS ^{182,183}	NR	Italy	-	2	-	●	-	-	-	1414	Hypertension	54 (7)	51	2.0 [‡]	33	4.0	27	-	●	
Vip ¹⁸⁴	2005-2007	Netherlands	-	2	-	-	-	●	-	119	Kidney disease	53 (12)	33	3.0 [‡]	10	3.0	86	●	-	
VITAL ¹⁸⁵	2002-2004	Netherlands	●	2	-	-	-	●	-	199	Elevated CVD risk	49 (12)	41	1.5	12	2.5	99	●	-	
WISH ¹⁸⁶	2004-2007	USA	-	2	-	●	-	-	-	350	General population	61 (7)	100	2.7	1	3.0	93	●	-	
Yang et al. ¹⁸⁷	2013-2017	China	-	2	-	-	-	●	-	119	Elevated CVD risk	54 (11)	72	0.5 [‡]	0	0.5	100	-	●	
Yun et al. ¹⁸⁸	2010-2013	China	-	2	●	-	-	-	-	135	Pre-existing CVD	62 (5)	40	2.3 [‡]	23	4.5	93	●	-	
Zou et al. ¹⁸⁹	2010	China	-	2	-	●	-	-	-	96	Elevated CVD risk	57 (5)	59	1.0 [‡]	0	1.0	89	●	-	
Total: 119 trials	1980-2017		30		18	19	20	33	37	100667		62 (8)	41.9	3.7	12038	3.5	90	91	49	11

Table V in the Supplement provides full names of the contributing trials. *Table III in the Supplement provides detailed information on the interventions in each trial. †Mean. ‡Maximum. Abbreviations: CCA-IMT=common-carotid-artery intima-media thickness. cIMT=carotid intima-media thickness. CVD=cardiovascular disease. IPD=individual-participant data. NR=not reported. SD=standard deviation.