

RESEARCH

Open Access



# Neutrophil to high-density lipoprotein ratio has a superior prognostic value in elderly patients with acute myocardial infarction: a comparison study

Jia-Bao Huang<sup>1†</sup>, Yu-Si Chen<sup>2†</sup>, Hong-Yan Ji<sup>2</sup>, Wei-Ming Xie<sup>2</sup>, Jie Jiang<sup>2</sup>, Lu-Sen Ran<sup>2</sup>, Cun-Tai Zhang<sup>1\*</sup> and Xiao-Qing Quan<sup>3\*</sup>

## Abstract

**Background:** The importance of the lipid-related biomarkers has been implicated in the pathological process and prognosis of acute myocardial infarction (AMI). Our work was conducted to discuss and compare the predictive ability of the neutrophil to high-density lipoprotein cholesterol (HDL-C) ratio (NHR) with other existing prognostic indices, for instance, the monocyte to HDL-C ratio (MHR) and the low-density lipoprotein cholesterol (LDL-C) to HDL-C ratio (LDL-C/HDL-C) in elderly patients with AMI.

**Methods:** Our population was 528 consecutive elderly AMI patients (65–85 years) who were enrolled from Tongji Hospital and grouped according to the cutoff points which were depicted by the receiver operating characteristic (ROC). The Kaplan-Meier curves were plotted with the survival data from the follow-up to investigate the difference between cutoff point-determined groups. Moreover, we assessed the impact of NHR, MHR, LDL-C/HDL-C on the long-term mortality and recurrent myocardial infarction (RMI) with Cox proportional hazard models.

**Results:** Mean duration of follow-up was  $673.85 \pm 14.32$  days (median 679.50 days). According to ROC curve analysis,  $NHR \geq 5.74$ ,  $MHR \geq 0.67$ ,  $LDL-C/HDL-C \geq 3.57$  were regarded as high-risk groups. Kaplan-Meier analysis resulted that the high-NHR, high-MHR and high-LDL-C/HDL-C groups presented higher mortality and RMI rate than the corresponding low-risk groups in predicting the long-term clinical outcomes (log-rank test: all  $P < 0.050$ ). In multivariate analysis, compared with MHR and LDL-C/HDL-C, only NHR was still recognized as a latent predictor for long-term mortality (hazard ratio [HR]: 1.96, 95% confidence interval [CI]: 1.02 to 3.75,  $P = 0.044$ ) and long-term RMI (HR: 2.23, 95% CI: 1.04 to 4.79,  $P = 0.040$ ). Furthermore, the positive correlation between NHR and Gensini score ( $r = 0.15$ ,  $P < 0.001$ ) indicated that NHR was relevant to the severity of coronary artery to some extent.

(Continued on next page)

\* Correspondence: [quanxiaoqing@hotmail.com](mailto:quanxiaoqing@hotmail.com); [ctzhang0425@163.com](mailto:ctzhang0425@163.com)

<sup>†</sup>Jia-Bao Huang and Yu-Si Chen contributed equally to this work.

<sup>3</sup>Department of General Practice, Shenzhen Longhua District Central Hospital, Shenzhen, China

<sup>1</sup>Department of Geriatrics, Tongji Hospital, Tongji Medical College, Huazhong University of Science and Technology, Wuhan, China

Full list of author information is available at the end of the article



© The Author(s). 2020 **Open Access** This article is licensed under a Creative Commons Attribution 4.0 International License, which permits use, sharing, adaptation, distribution and reproduction in any medium or format, as long as you give appropriate credit to the original author(s) and the source, provide a link to the Creative Commons licence, and indicate if changes were made. The images or other third party material in this article are included in the article's Creative Commons licence, unless indicated otherwise in a credit line to the material. If material is not included in the article's Creative Commons licence and your intended use is not permitted by statutory regulation or exceeds the permitted use, you will need to obtain permission directly from the copyright holder. To view a copy of this licence, visit <http://creativecommons.org/licenses/by/4.0/>. The Creative Commons Public Domain Dedication waiver (<http://creativecommons.org/publicdomain/zero/1.0/>) applies to the data made available in this article, unless otherwise stated in a credit line to the data.

(Continued from previous page)

**Conclusions:** NHR, a novel laboratory marker, might be a predictor of the long-term clinical outcomes of elderly patients with AMI, which was superior to MHR and LDL-C/HDL-C.

**Keywords:** Acute myocardial infarction, Neutrophil, High-density lipoprotein cholesterol, Mortality, Recurrent myocardial infarction

## Introduction

Acute myocardial infarction (AMI), a serious form of coronary artery disease (CAD), is a significant cause of death worldwide, particularly in the elderly population [1]. Actually, the elderly AMI patients who may have poor prognosis could be greatly improved by timely and appropriate intervention measures [2]. Based on this, the discovery of prognosis-related biomarkers could benefit considerably to the oriented treatment and the prognostic evaluation in coronary infarction [3–5]. Thus, to find an efficient predictor is urgently needed.

Nowadays, the general public have more in-depth understanding of the correlation between serum lipid level and CAD [6]. In addition, as for single lipids, some lipid ratios could be well applied to predict CAD and the associations were of comparable magnitude [7]. For instance, the ratio of monocyte to high-density lipoprotein cholesterol (HDL-C) (MHR) [8, 9] and the ratio of low-density lipoprotein cholesterol (LDL-C) to HDL-C (LDL-C/HDL-C) were found to have correlation with poor prognosis in cardiovascular diseases [10, 11].

It was showed that the inflammation and the abnormal lipid metabolism took a critical part in plaque formation and atherosclerosis in the development of AMI [12–15]. Circulating neutrophils played a causative role in the immuno-inflammatory responses of the pathogenesis of atherosclerosis [16]. Neutrophils abundance was strongly connected with the incidence of cardiac adverse events [17]. On the contrary, recent investigations suggested that the HDL-C was inversely related to the risk of CAD and could be highly predictive of its prognosis [18]. What's more, previous clinical and experimental studies indicated that HDL could regulate the function of activated neutrophils [19]. In contrast, activated neutrophils could also affect the composition and function of HDL [20]. Therefore, we hypothesized that the neutrophil to HDL-C ratio (NHR), a potential new lipid biomarker, might reflect the inflammation level and the lipid profile in a quantitative manner. With these considerations, our work was conducted to compare the predictive value of NHR with other two hematological parameters (including MHR and LDL-C/HDL-C) in elderly AMI patients.

## Methods

### Patients

In current work, the data of 528 patients (65–85 years) with AMI in the Tongji Hospital, Tongji Medical College, Huazhong University of Science and Technology between January 2016 and December 2017 were collected. Permission to accomplish the study was received from the institutional board review committee (TJ-C20141112). This study followed the principles of the Declaration Helsinki.

In our study, the patients were admitted with AMI within 1 month of symptom onset. The eligible population corresponding to AMI diagnosis standards mainly included the patients who was defined as ST-segment elevation myocardial infarction (STEMI, typical symptoms of myocardial ischemia lasting for > 30 min, with ST-segment elevation > 1 mm in  $\geq 2$  contiguous leads and/or new onset of left bundle branch block) [21] and without ST-segment elevation myocardial infarction (NSTEMI, a rise of myocardial injury markers in combination with typical symptoms of myocardial ischemia and without ST-segment elevation) [22].

Here were the exclusion criteria. (1) Patients who were younger than 65 or older than 85 years. (2) Patients who had sepsis or trauma. (3) Patients who were diagnosed as active cancer, hematological proliferative diseases, autoimmune diseases, pulmonary arterial hypertension, end-stage liver disease or renal failure. (4) Patients who took medications including any steroid therapy or chemotherapy around the diagnosis period, thrombolytic therapy and glycoprotein IIb/IIIa inhibitors.

### Clinical data collection

Current study evaluated the demographic data from medical records including age, sex, smoking status, and the anamnesis (such as the history of CAD, hypertension, diabetes and cerebrovascular diseases). We collected the vital signs (heart rate, systolic blood pressure, diastolic blood pressure) and Killip class at admission. Besides, the data of pharmacotherapy during hospitalization were included as well.

In all the patients, a routine blood test was performed immediately after admission. Laboratory results included complete blood cell counts (white blood count [WBC] and its subtypes, hemoglobin),

aminopherase, creatinine, serum lipid (triglycerides, total cholesterol, LDL-C, HDL-C), N-terminal pro-hormone of brain natriuretic peptide, and myocardial injury markers. Also, we gathered the result of left ventricular ejection fraction (LVEF) from cardiac ultrasonography.

### Coronary angiography (CAG)

The CAG was performed based on the actual clinical situation and the results were determined by two professional cardiovascular physicians. Based on the clinical findings, physicians would select different treatment strategies (such as percutaneous coronary intervention [PCI], coronary artery bypass grafting [CABG], and medical therapy) in the light of corresponding practice guidelines [23]. Furthermore, we also collected data of thrombolysis in myocardial infarction trial (TIMI) blood flow grade and Gensini score (an angiographic scoring system assessed the severity of a coronary artery) from the electronic medical records database.

### Clinical follow-up and study end points

The endpoints of present study were all-cause mortality and recurrent myocardial infarction (RMI) that happened during the follow-up period. All-cause mortality was defined as death from any cause. RMI was defined as recurrence of AMI whether the reinfarction area located in the original or other site [24]. Follow-up of all patients were began from the first day after discharge until December 2018. The access to information during follow-up was performed through standard telephone interview with patients or their relatives at regular intervals.

### Statistical analysis

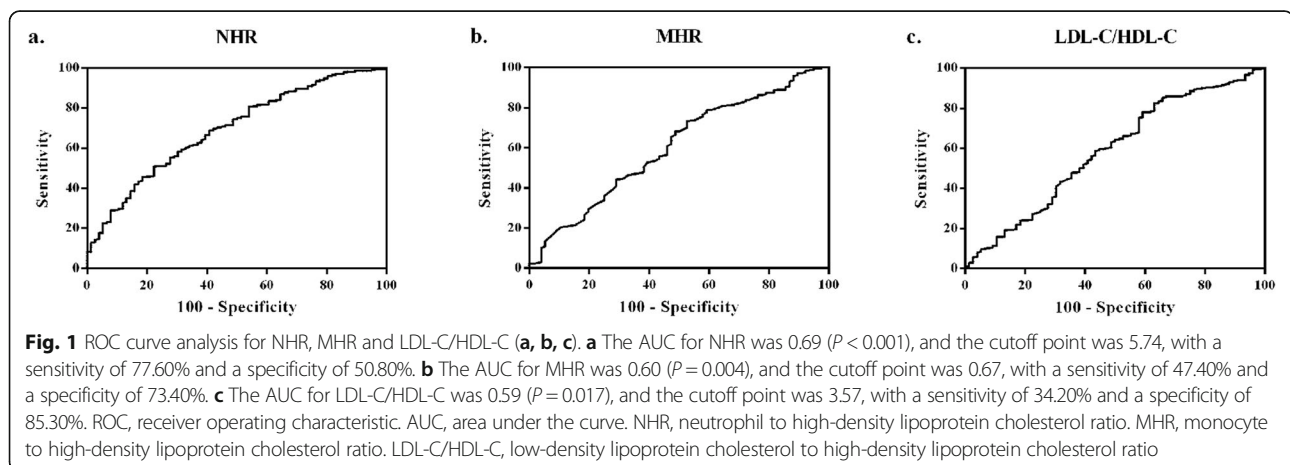
NHR, MHR and LDL-C/HDL-C were calculated by the formula respectively:  $NHR = \text{neutrophil} / \text{HDL}$ ,  $MHR = \text{monocyte} / \text{HDL}$  and  $LDL-C/HDL-C = LDL-C / HDL-C$ .

In baseline characteristics analysis, continuous variables were presented as mean  $\pm$  standard error and tested for normal distribution by the Kolmogorov-Smirnov test. For the comparison of variables between groups, the parametric/nonparametric tests (continuous variables) or Chi-square test (categorical variables) was selected according to the type of variables. Using Receiver operating characteristic (ROC) curves to find out the optimal cutoff points of NHR, MHR and LDL-C/HDL-C. Kaplan-Meier curve for survival analysis was plotted to assess the prognosis between index-determined subgroups with log-rank test. The Spearman correlation coefficient was computed to calculate the correlation between two variables. Univariate analyses were performed to determine the significance of prognostic variables. Any variables examined in the univariate analysis for which the  $P < 0.10$  or several conventional risk factors for AMI (such as age, gender, smoking status, and previous history of CAD, hypertension, diabetes) were contained in the forward stepwise multivariate model. A value of  $P < 0.05$  was supposed to be statistically significant. All statistical analyses were performed using SPSS Version 22.0.

## Results

### ROC curve analysis

ROC curve was analyzed in search of the cutoff value of NHR, MHR and LDL-C/HDL-C for the evaluation of long-term clinical outcomes in elderly AMI patients. All of these results were presented in Fig. 1. For NHR, the area under the curve (AUC) was 0.69 ( $P < 0.001$ , 95% confidence interval [CI]: 0.63 to 0.76). The cutoff point was observed at 5.74, with a sensitivity of 77.60% and a specificity of 50.80%. (Fig. 1a). Accordingly, the AUC for MHR was calculated as 0.60 ( $P = 0.004$ , 95% CI: 0.53 to 0.68; Fig. 1b). The cutoff value for MHR was found to be 0.67, with a sensitivity of 47.40% and a specificity of 73.40%. Moreover, the AUC for LDL-C/HDL-C was 0.59





**Table 1** Baseline characteristics of elderly AMI patients (Continued)

Variable	NHR < 5.74 n = 249	NHR ≥ 5.74 n = 279	P	MHR < 0.67 n = 367	MHR ≥ 0.67 n = 161	P	LDL-C/HDL-C < 3.57 n = 439	LDL-C/HDL-C ≥ 3.57 n = 89	P
Antiplatelet therapy	243 (97.59%)	271 (97.13%)	0.744	361 (98.37%)	153 (95.03%)	0.051	427 (97.27%)	87 (97.75%)	0.003
Beta-blocker	182 (73.09%)	198 (70.97%)	0.587	271 (73.84%)	109 (67.70%)	< 0.001	317 (72.21%)	63 (70.79%)	0.237
ACEI/ARB	191 (76.71%)	187 (67.03%)	0.014	271 (73.84%)	107 (66.46%)	0.083	318 (72.44%)	60 (67.42%)	0.596
Statin	247 (99.20%)	275 (98.57%)	0.915	364 (99.18%)	158 (98.14%)	0.297	434 (98.86%)	88 (98.88%)	0.002
Long-term clinical events, n (%)									
Long-term mortality	17 (6.83%)	59 (21.15%)	< 0.001	40 (10.90%)	36 (22.36%)	0.001	50 (11.39%)	26 (29.21%)	< 0.001
Long-term RMI	10 (4.02%)	31 (11.11%)	0.002	22 (5.99%)	19 (11.80%)	0.022	29 (6.61%)	12 (13.48%)	0.010

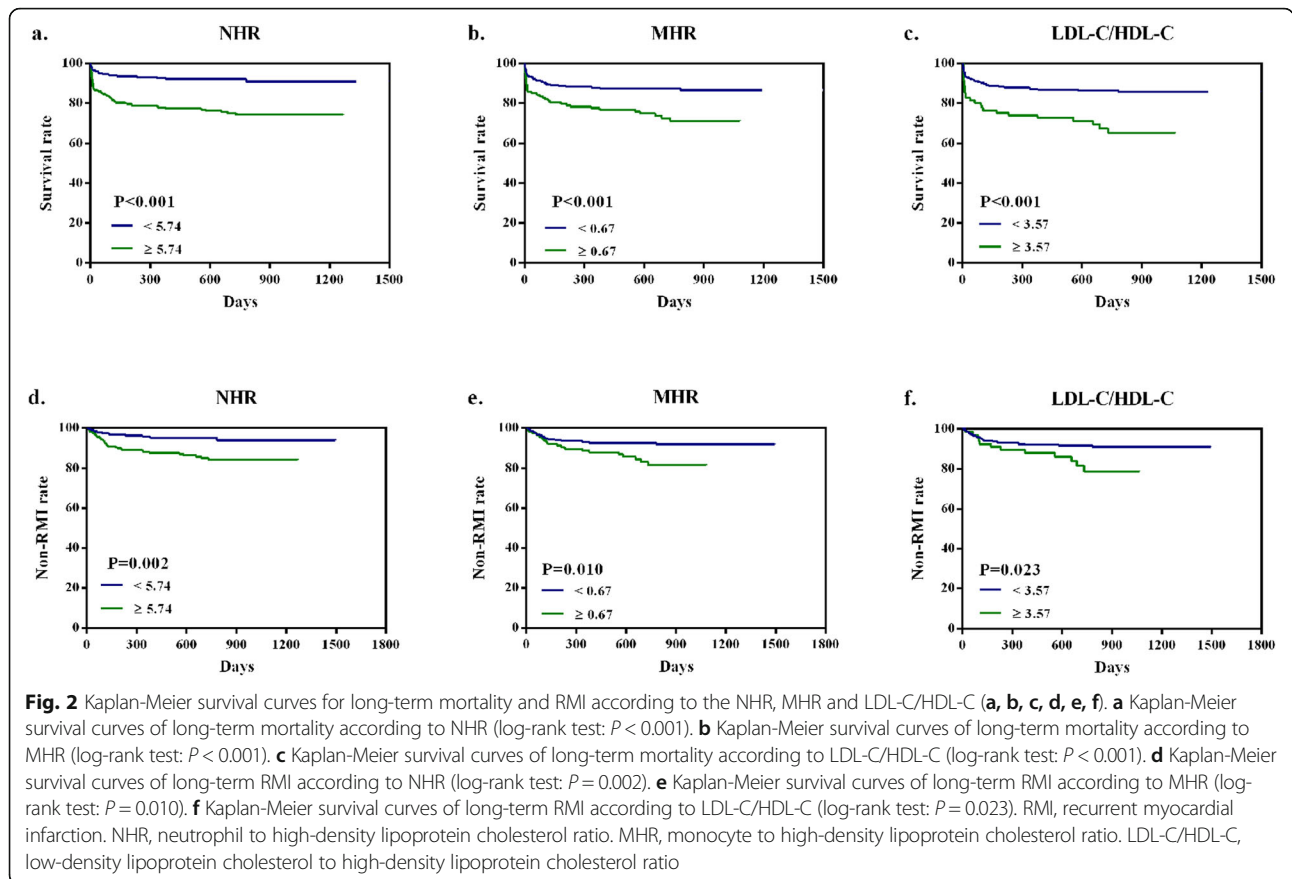
AMI acute myocardial infarction, MHR neutrophil to high-density lipoprotein cholesterol ratio, MHR monocyte to high-density lipoprotein cholesterol ratio, LDL-C/HDL-C low-density lipoprotein cholesterol to high-density lipoprotein cholesterol ratio, CAD coronary artery disease, CVD cerebrovascular diseases, SBP systolic blood pressure, DBP diastolic blood pressure, HR heart rate, STEMI ST-segment elevation myocardial infarction, NSTEMI non-ST-elevation myocardial infarction, LVEF left ventricular ejection fraction, AST aspartate aminotransferase, ALT alanine aminotransferase, NT-proBNP N-terminal pro-brain natriuretic peptide, CTnl cardiac troponin I, HDL-C high-density lipoprotein cholesterol, LDL-C low-density lipoprotein cholesterol, WBC white blood cell, ACEI/ARB angiotensin-converting enzyme inhibitor/ angiotensin II receptor blocker, RMI recurrent myocardial infarction

Data presented are mean ± SEM or n(%)

**Table 2** Angiographic and procedural characteristics in the study population

Variable	NHR < 5.74 n = 249	NHR ≥ 5.74 n = 279	P	MHR < 0.67 n = 367	MHR ≥ 0.67 n = 161	P	LDL-C/HDL-C < 3.57 n = 439	LDL-C/HDL-C ≥ 3.57 n = 89	P
<b>Culprit vessel, n (%)</b>									
LAD	175 (70.28%)	216 (77.42%)	0.062	273 (74.39%)	118 (73.29%)	< 0.001	325 (74.03%)	66 (74.16%)	0.980
LCX	128 (51.41%)	160 (57.35%)	0.171	193 (52.59%)	95 (59.01%)	0.173	234 (53.30%)	54 (60.67%)	0.203
RCA	130 (52.21%)	167 (59.86%)	0.077	209 (56.95%)	88 (54.66%)	0.625	245 (55.81%)	52 (58.43%)	0.650
No. of diseased vessels, n (%)			< 0.001			< 0.001			< 0.001
1	55 (22.09%)	67 (24.01%)		95 (25.89%)	27 (16.77%)		105 (23.92%)	17 (19.10%)	
2	60 (24.10%)	70 (25.09%)		86 (23.43%)	44 (27.33%)		105 (23.92%)	25 (28.09%)	
3	87 (34.94%)	112 (40.14%)		137 (37.33%)	62 (38.51%)		163 (37.13%)	35 (39.33%)	
Onset to reperfusion time, h	16.43 ± 0.56	12.95 ± 0.54	< 0.001	14.66 ± 0.46	14.45 ± 0.75	0.698	14.67 ± 0.43	14.24 ± 0.98	0.443
Tirofiban use, n (%)	170 (68.27%)	213 (76.34%)	0.038	276 (75.20%)	107 (66.46%)	0.038	321 (73.12%)	62 (69.66%)	0.505
Stent use, n (%)	146 (58.63%)	189 (67.74%)	0.030	242 (65.94%)	93 (57.76%)	0.072	279 (63.55%)	55 (61.80%)	0.754
Use of thrombus aspiration, n (%)	8 (3.21%)	29 (10.39%)	0.001	30 (8.17%)	8 (4.97%)	0.189	30 (6.83%)	7 (7.87%)	0.728
Multi-vessel PCI therapy, n (%)	201 (80.72%)	249 (89.25%)	0.006	317 (86.38%)	133 (82.61%)	0.261	373 (84.97%)	77 (86.52%)	0.707
CABG therapy, n (%)	21 (8.43%)	17 (6.09%)	0.299	25 (6.81%)	14 (8.70%)	0.446	29 (6.61%)	9 (10.11%)	0.243
Preprocedural TIMI grade, n (%):			< 0.001			< 0.001			< 0.001
0	118 (47.39%)	181 (64.87%)		206 (56.13%)	93 (57.76%)		242 (55.13%)	58 (65.17%)	
1	73 (29.32%)	64 (22.94%)		101 (27.52%)	36 (22.36%)		119 (27.11%)	18 (20.22%)	
2	9 (3.61%)	3 (1.08%)		10 (2.72%)	3 (1.86%)		11 (2.51%)	1 (1.12%)	
3	0 (0.00%)	1 (0.36%)		0 (0.00%)	1 (0.62%)		1 (0.23%)	0 (0.00%)	
Postprocedural TIMI grade, n (%):			< 0.001			< 0.001			< 0.001
0	31 (12.45%)	34 (12.19%)		93 (25.34%)	50 (31.06%)		50 (11.39%)	16 (17.98%)	
1	14 (5.62%)	18 (6.45%)		22 (5.99%)	10 (6.21%)		27 (6.15%)	5 (5.62%)	
2	8 (3.21%)	7 (2.51%)		12 (3.27%)	3 (1.86%)		15 (3.42%)	0 (0.00%)	
3	148 (59.44%)	189 (67.74%)		240 (65.40%)	98 (60.87%)		281 (64.01%)	56 (62.92%)	
Gensini score	70.92 ± 3.61	84.78 ± 3.35	0.003	78.60 ± 3.06	77.43 ± 4.13	0.662	75.45 ± 2.66	92.03 ± 6.34	0.005

NHR neutrophil to high-density lipoprotein cholesterol ratio, MHR monocyte to high-density lipoprotein cholesterol ratio, LDL-C/HDL-C low-density lipoprotein cholesterol to high-density lipoprotein cholesterol ratio, LAD left coronary artery, LCX left circumflex, RCA right coronary artery, PCI percutaneous coronary intervention, CABG coronary artery bypass grafting, TIMI thrombolysis in myocardial infarction  
Data presented are mean ± SEM or n (%)



( $P = 0.017$ , 95% CI: 0.51 to 0.66) with a cutoff point at 3.57 (sensitivity 34.20%, specificity 85.30%; Fig. 1c). Consequently, the AUC for NHR was larger than those for MHR and LDL-C/HDL-C and it preliminarily presented better predictive value for the prognosis in elderly AMI patients.

### Baseline characteristics

As shown in Table 1, the total number of 528 patients were collected and grouped by cutoff points as described above. 333 of the 528 patients were male (63.07%) and the population were aged between 65 and 85 years old ( $72.66 \pm 0.23$ ). Diagnoses included: 268 patients with STEMI and 260 patients with NSTEMI.

In the groups divided by the  $NHR < 5.74$  and  $NHR \geq 5.74$ , results showed that there were clinically statistical differences among two groups in terms of medical history of diabetes ( $P = 0.007$ ), vital signs at admission ( $P = 0.013$ ;  $P < 0.001$ ), LVEF ( $P = 0.001$ ). Elevated level of NHR was associated with increased WBC and its subtypes ( $P < 0.001$ , respectively), so was in platelet count ( $P < 0.001$ ), but not with lymphocyte count ( $P = 0.142$ ) and hemoglobin ( $P = 0.536$ ). Moreover, patients in  $NHR \geq 5.74$  were more likely to have worse hepatorenal

function ( $P \leq 0.001$ , respectively) and decreased concentration of HDL-C ( $P < 0.001$ ).

In the groups divided by the  $MHR < 0.67$  and  $MHR \geq 0.67$ , it was noted that there were statistical differences in age ( $P = 0.048$ ), gender ( $P < 0.001$ ), smoking status ( $P = 0.021$ ), the function index of heart and liver and kidney and the level of serum lipid as well as the complete blood counts ( $P < 0.050$ , respectively). In terms of the data grouped by the cut-off point of LDL-C/HDL-C, no statistically significant between-group differences for the primary outcomes were detected, except for the level of serum lipids ( $P < 0.001$ ,  $P < 0.001$ ,  $P < 0.001$ ,  $P = 0.002$ , respectively).

The angiographic characteristics were reported in Table 2. When grouping by NHR, no significant differences were discovered in the culprit vessel location and the CABG therapy, except for the culprit vessel quantity ( $P < 0.001$ ), onset to reperfusion time ( $P < 0.001$ ), tirofiban use ( $P = 0.038$ ), stent use ( $P = 0.030$ ), thrombus aspiration use ( $P = 0.001$ ), the multi-vessel PCI therapy ( $P = 0.006$ ), the TIMI grade ( $P < 0.001$ ) and Gensini score ( $P = 0.003$ ). In the groups divided by the  $MHR < 0.67$  and  $MHR \geq 0.67$ , it was resulted that the CAG outcomes were worse in the high-risk group. What's more, it was the same in the LDL-C/HDL-C grouping.

**Table 3** Predictors of long-term mortality in univariable and multivariable Cox regression analyses

Variables	Univariable		Multivariable	
	Hazard ratio (95% CI)	<i>P</i>	Hazard ratio (95% CI)	<i>P</i>
Age, year	1.09 (1.04 to 1.13)	< 0.001	–	0.268
Gender (male)	1.73 (1.10 to 2.71)	0.017	–	0.066
Gensini score	1.01 (1.00 to 1.01)	0.009	<b>1.00 (1.00 to 1.01)</b>	<b>0.034</b>
Smoking status	1.53 (0.94 to 2.50)	0.087	–	0.814
Hypertension	1.09 (0.69 to 1.73)	0.703	–	0.877
Prior CAD	1.47 (0.82 to 2.62)	0.196	–	0.245
Diabetes	1.85 (1.17 to 2.94)	0.009	–	0.225
Killip class	2.14 (1.73 to 2.64)	< 0.001	<b>1.85 (1.48 to 2.31)</b>	<b>&lt; 0.001</b>
LVEF	0.97 (0.95 to 0.98)	< 0.001	–	0.274
CTnI	1.97 (1.26 to 3.09)	0.003	–	0.333
WBC	1.16 (1.11 to 1.23)	< 0.001	<b>1.09 (1.03 to 1.16)</b>	<b>0.005</b>
Neutrophil	1.17 (1.11 to 1.22)	< 0.001	–	0.866
Lymphocyte	0.89 (0.62 to 1.26)	0.499	–	–
Monocyte	2.84 (1.50 to 5.37)	0.001	–	0.496
Platelet	1.00 (1.00 to 1.01)	0.102	–	–
Hemoglobin	0.98 (0.97 to 0.99)	< 0.001	<b>0.98 (0.97 to 0.99)</b>	<b>0.001</b>
Total cholesterol	1.12 (0.93 to 1.35)	0.246	–	–
Total triglyceride	0.95 (0.76 to 1.18)	0.628	–	–
HDL-C	0.64 (0.35 to 1.16)	0.139	–	–
LDL-C	1.18 (0.95 to 1.48)	0.130	–	–
Creatinine	1.01 (1.01 to 1.02)	< 0.001	–	0.207
NHR ≥ 5.74	3.21 (1.87 to 5.50)	< 0.001	<b>1.96 (1.02 to 3.75)</b>	<b>0.044</b>
MHR ≥ 0.67	2.22 (1.42 to 3.49)	0.001	–	0.237
LDL-C/HDL-C ≥ 3.57	1.25 (1.59 to 4.11)	0.010	–	0.092

CI confidence interval, CAD coronary artery disease, LVEF left ventricular ejection fraction, CTnI cardiac troponin I, WBC white blood cell, HDL-C high-density lipoprotein cholesterol, LDL-C low-density lipoprotein cholesterol, NHR neutrophil to high-density lipoprotein cholesterol ratio, MHR monocyte to high-density lipoprotein, LDL-C/HDL-C low-density lipoprotein cholesterol to high-density lipoprotein cholesterol ratio

Note: Bolded differences show statistical difference at the  $p < 0.05$  for multivariate analysis

### Survival analysis

The Kaplan-Meier Curve were plotted with the event-free survival data from the follow-up. Mean duration of follow-up was  $673.85 \pm 14.32$  days (median 679.50 days). The long-term mortality in the high-risk groups were significantly higher than low-risk groups (log-rank tests: all  $P < 0.001$ , Fig. 2a-c). As shown in Fig. 2d-f, it was indicated that patients in the high-risk groups had significantly worse long-term RMI than patients in the low-risk groups (log-rank tests:  $P = 0.002$ ,  $P = 0.010$ ,  $P = 0.023$ , respectively).

### Univariate and multivariate cox regression analyses

In multivariate regression analysis, Gensini score (hazard ratio [HR]: 1.00, 95% CI: 1.00 to 1.01,  $P = 0.034$ ), Killip class (HR: 1.85, 95% CI: 1.48 to 2.31,  $P < 0.001$ ), WBC (HR: 1.09, 95% CI: 1.03 to 1.16,  $P = 0.005$ ), hemoglobin (HR: 0.98, 95% CI: 0.97 to 0.99,  $P = 0.001$ ) and the NHR (HR: 1.96, 95% CI: 1.02 to 3.75,  $P = 0.044$ ) were found as

independent predictors of long-term mortality, but not with MHR ( $P = 0.237$ ) or LDL-C/HDL-C ( $P = 0.092$ ) (Table 3). Moreover, for predicting long-term RMI, we found that NHR (HR: 2.23, 95% CI: 1.04 to 4.79,  $P = 0.040$ ) was still the potential predictor along with gender (HR: 2.27, 95% CI: 1.22 to 4.23,  $P = 0.010$ ), Killip class (HR: 1.69, 95% CI: 1.23 to 2.33,  $P = 0.001$ ) and monocyte (HR: 3.47, 95% CI: 1.46 to 8.26,  $P = 0.005$ ), but not with MHR ( $P = 0.505$ ) and LDL-C/HDL-C ( $P = 0.248$ ) (Table 4).

### Correlation analysis between lipid ratios and Gensini score

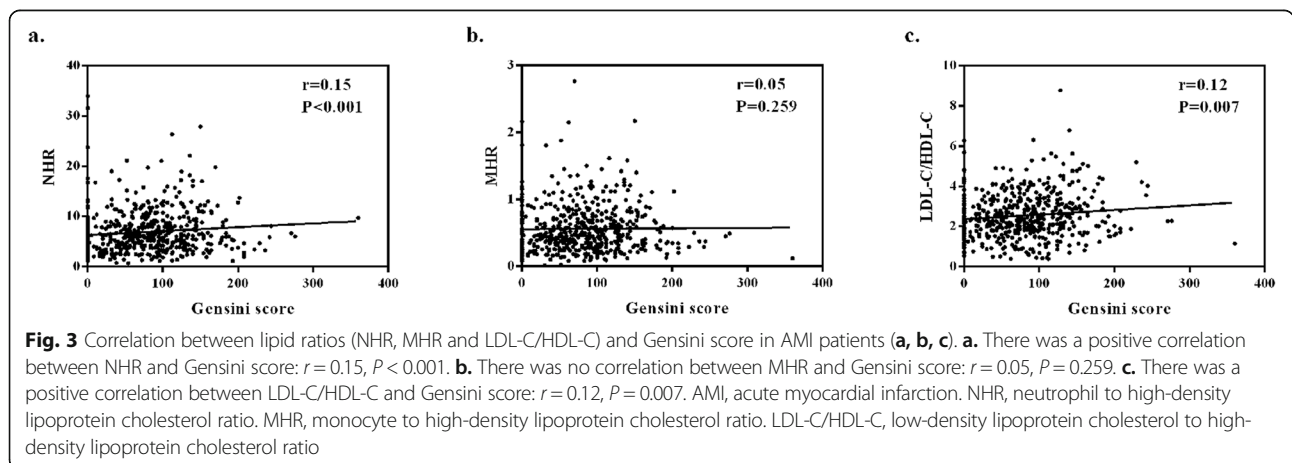
As shown in Fig. 3, a weak but significant positive correlation between NHR and Gensini score in our population ( $r = 0.15$ ,  $P < 0.001$ ; Fig. 3a), so was in LDL-C/HDL-C ( $r = 0.12$ ,  $P = 0.007$ ; Fig. 3c). It was found that there was no correlation between MHR and Gensini score ( $r = 0.05$ ,  $P = 0.259$ ; Fig. 3b).



**Table 4** Predictors of long-term RMI in univariable and multivariable Cox regression analyses

Variables	Univariable		Multivariable	
	Hazard ratio (95% CI)	P	Hazard ratio (95% CI)	P
Age, year	1.06 (1.01 to 1.13)	0.028	–	0.275
Gender (male)	2.15 (1.16 to 3.92)	0.015	<b>2.27 (1.22 to 4.23)</b>	<b>0.010</b>
Gensini score	1.01 (1.00 to 1.01)	0.046	–	0.104
Smoking status	1.46 (0.75 to 2.81)	0.263	–	0.753
Hypertension	1.00 (0.54 to 1.87)	0.990	–	0.992
Prior CAD	1.95 (0.60 to 6.33)	0.265	–	0.401
Diabetes	2.18 (1.17 to 4.05)	0.014	–	0.240
Killip class	1.73 (1.28 to 2.34)	< 0.001	<b>1.69 (1.23 to 2.33)</b>	<b>0.001</b>
LVEF	0.97 (0.95 to 1.00)	0.026	–	0.837
CTnl	1.86 (1.01 to 3.43)	0.048	–	0.236
WBC	1.15 (1.07 to 1.24)	< 0.001	–	0.554
Neutrophil	1.14 (1.07 to 1.23)	< 0.001	–	0.797
Lymphocyte	0.78 (0.47 to 1.30)	0.342	–	–
Monocyte	4.31 (1.93 to 9.58)	< 0.001	<b>3.47 (1.46 to 8.26)</b>	<b>0.005</b>
Platelet	1.01 (1.00 to 1.01)	0.009	–	0.075
Hemoglobin	0.98 (0.97 to 1.00)	0.012	–	0.089
Total cholesterol	1.21 (0.95 to 1.56)	0.126	–	–
Total triglyceride	1.02 (0.79 to 1.31)	0.906	–	–
HDL-C	0.94 (0.49 to 1.81)	0.845	–	–
LDL-C	1.25 (0.94 to 1.67)	0.122	–	–
Creatinine	1.01 (1.00 to 1.02)	0.049	–	0.276
NHR ≥ 5.74	2.98 (1.46 to 6.08)	0.003	<b>2.23 (1.04 to 4.79)</b>	<b>0.040</b>
MHR ≥ 0.67	2.20 (1.19 to 4.07)	0.012	–	0.505
LDL-C/HDL-C ≥ 3.57	2.14 (1.09 to 4.20)	0.027	–	0.248

RMI recurrent myocardial infarction, CI confidence interval, CAD coronary artery disease, LVEF left ventricular ejection fraction, CTnl cardiac troponin I, WBC white blood cell, HDL-C high-density lipoprotein cholesterol, LDL-C low-density lipoprotein cholesterol, NHR neutrophil to high-density lipoprotein cholesterol ratio, MHR monocyte to high-density lipoprotein cholesterol ratio, LDL-C/HDL-C low-density lipoprotein cholesterol to high-density lipoprotein cholesterol ratio  
 Note: Bolded differences show statistical difference at the  $p < 0.05$  for multivariate analysis



## Discussion

In our work, our results presented that higher level of NHR was associated with higher risk of long-term mortality and RMI. NHR has a superior prognostic value for long-term clinical outcomes in elderly patients compared with MHR and LDL-C/HDL-C. Moreover, there was a positive correlation between NHR and the severity of a coronary artery. This study appears to be novel to assess the prognostic role of NHR for long-term outcomes in elderly AMI patients. The results of present study mainly applied to patients aged between 65 and 85 years.

Recent studies have paid more attentions to the linkage between lipid-related biomarkers and cardiac disease. Previous studies reported that the elevated MHR has greater risk of the worse prognosis in AMI [25–27]. Besides, in a prospective cohort study, the high level of LDL-C/HDL-C was discovered to be related with an increased risk of adverse cardiovascular events [28]. From the survival analysis, our results were consistent with previous studies. Actually, the etiology of AMI was complicated, included alternated lipid metabolism, inflammatory reaction, oxidation injury, and other pathological processes [29–32]. Herein, we hypothesized that the NHR, a novel index composed of inflammatory cell and lipid cholesterol, might reflect the inflammatory status and the lipid metabolism more comprehensively. In the present study, the prediction abilities of NHR and other two existing ratios (MHR and LDL-C/HDL-C) were compared in univariate and multivariate analyses. After adjusting for confounding factors, our results suggested a possible better prediction ability for NHR levels in long-term clinical outcomes, compared with MHR and LDL-C/HDL-C.

From our analysis, we attempted to explain the result that higher NHR was associated with poorer clinical outcomes. Neutrophil was an indispensable component participating in the immuno-inflammatory response of AMI [33, 34]. An increase in neutrophil has been verified at the site of coronary lesion [35]. Recent evidences indicated that elevated level of myeloperoxidase from the neutrophil could give rise to coronary atherosclerosis [36, 37]. Yunoki et al. pointed out that plasma myeloperoxidase levels were inversely correlated with HDL-C and serum paraoxonase-1 (PON-1) concentrations and activities [38]. It was supposed that the interaction between myeloperoxidase and HDL-C in the circulation may decrease serum PON-1 levels. Besides, Park et al. reported that the risk of cardiovascular death and RMI appeared higher in the patients with lower level of HDL-C level [39]. Previous studies showed that HDL-C was engaged in the inhibition of the inflammation and oxidation [40, 41]. According to the Murphy's study, the ability of HDL-C to inhibit neutrophils activation, attachment, diffusion, and migration might be related to the abundance of lipid rafts [16].

Above all, because of the interaction of increased neutrophils and decreased HDL-C in AMI, an elevated NHR might be related to the inflammatory activity and the abnormal lipids metabolism. Besides, as for the complex interactions between neutrophil and HDL-C, the combined indicator of NHR might be more reliable than single parameter. That was consistent with the results from the present study. On top of all, as a new predictor for the prognosis of AMI patient, NHR could be calculated from the complete blood count on admission, which is quick and convenient.

Gensini score was an indicator to evaluate the severity of coronary artery disease [42]. Specifically, different weight coefficients were assigned to different coronary artery branches according to their severity, which was conducive to reflect the severity of the disease objectively. Based on our results, NHR was positively correlated with Gensini score and was an effective predictive factor for long-term clinical outcomes. The combined application of the NHR and Gensini score might be more helpful for clinicians to identify the high-risk patients with AMI. Further studies are needed to validate this hypothesis.

We have to acknowledge that there were some limitations in this study. First, the retrospective design of the study sets a limit to the convincement of our study. Secondly, we could not compare the lipid ratios with other conventional inflammatory markers, for instance, C-reactive protein, fibrinogen, or myeloperoxidase. Because they were not routinely obtained in our study population. Thirdly, the patients were admitted with AMI within one month of symptom onset. Thus, the neutrophil level might not be static across this period of time. Lastly, our results did not show the well established link between diabetes and mortality. It might be because of the differences in sample size, study design, population selection, statistical method, outcome measurement and so on.

## Conclusion

In summary, we observed that NHR might has a predictive value for prognosis in the long-term mortality and RMI of elderly AMI patients, which is superior to both MHR and LDL-C/HDL-C.

## Abbreviations

AMI: Acute myocardial infarction; HDL-C: High-density lipoprotein cholesterol; NHR: Neutrophil to high-density lipoprotein cholesterol ratio; MHR: Monocyte to high-density lipoprotein cholesterol ratio; LDL-C: Low-density lipoprotein cholesterol; LDL-C/HDL-C: Low-density lipoprotein cholesterol to high-density lipoprotein cholesterol ratio; ROC: Receiver operating characteristic; RMI: Recurrent myocardial infarction; CAD: Coronary artery disease; STEMI: ST-segment elevation myocardial infarction; NSTEMI: Non-ST-elevation myocardial infarction; WBC: White blood cell; LVEF: Left ventricular ejection fraction; CAG: Coronary angiography; PCI: Percutaneous coronary intervention; CABG: Coronary artery bypass grafting; TIMI: Thrombolysis in

myocardial infarction; AUC: Area under the curve; CI: Confidence interval; HR: Hazard ratio; PON-1: Paraoxonase-1

### Acknowledgments

We acknowledge the volunteers who assisted with our study design, data collection and analysis, and participate in the manuscript writing or reviewing.

### Authors' contributions

Jia-Bao Huang, Yu-Si Chen and Hong-Yan Ji designed the study. Yu-Si Chen finished the initial draft writing. Cun-Tai Zhang and Xiao-Qing Quan contributed to the acquirement of institutional permission. Jia-Bao Huang and Hong-Yan Ji contributed to the draft correction. Cun-Tai Zhang and Xiao-Qing Quan reviewed the final manuscript. All the authors participated in clinical data collection, follow-up, data analysis and data examination. All the authors also agreed to be accountable for all aspects of the work in ensuring that questions related to the accuracy or integrity of any part of the work are appropriately investigated and resolved. All authors read and approved the final manuscript.

### Funding

This work is supported by the grants from the National Natural Science Foundation of China (81400255).

### Availability of data and materials

The data analyzed in the current study are available from the corresponding authors on reasonable request.

### Ethics approval and consent to participate

This study was approved by the Ethics Committee of the Tongji Hospital of Tongji Medical College of Huazhong University of Science and Technology according to the principles of Declaration of Helsinki of 1975. Verbal information for all the participants was conducted.

### Consent for publication

Not applicable.

### Competing interests

The authors declare no competing interests.

### Author details

<sup>1</sup>Department of Geriatrics, Tongji Hospital, Tongji Medical College, Huazhong University of Science and Technology, Wuhan, China. <sup>2</sup>Second Clinical School, Tongji Hospital, Tongji Medical College, Huazhong University of Science and Technology, Wuhan, China. <sup>3</sup>Department of General Practice, Shenzhen Longhua District Central Hospital, Shenzhen, China.

Received: 24 April 2019 Accepted: 13 March 2020

Published online: 04 April 2020

### References

- Arora S, Stouffer GA, Kucharska-Newton AM, Qamar A, Vaduganathan M, Pandey A, et al. Twenty year trends and sex differences in young adults hospitalized with acute myocardial infarction. *Circulation*. 2019;139:1047–56.
- Xiao J, Xu F, Yang CL, Chen WQ, Chen X, Zhang H, et al. Preferred revascularization strategies in patients with ischemic heart failure: a meta-analysis. *Curr Med Sci*. 2018;38:776–84.
- Body R, Carley S, McDowell G, Jaffe AS, France M, Cruickshank K, et al. Rapid exclusion of acute myocardial infarction in patients with undetectable troponin using a high-sensitivity assay. *J Am Coll Cardiol*. 2011;58:1332–9.
- Winter MP, Wiesbauer F, Blessberger H, Pavo N, Sulzgruber P, Huber K, et al. Lipid profile and long-term outcome in premature myocardial infarction. *Eur J Clin Invest*. 2018;48:e13008.
- Karthikeyan G, Teo KK, Islam S, McQueen MJ, Pais P, Wang X, et al. Lipid profile, plasma apolipoproteins, and risk of a first myocardial infarction among Asians: an analysis from the INTERHEART study. *J Am Coll Cardiol*. 2009;53:244–53.
- Prospective Studies C, Lewington S, Whitlock G, Clarke R, Sherliker P, Emberson J, et al. Blood cholesterol and vascular mortality by age, sex, and blood pressure: a meta-analysis of individual data from 61 prospective studies with 55,000 vascular deaths. *Lancet*. 2007;370:1829–39.
- Canoui-Poitrine F, Luc G, Bard JM, Ferrieres J, Yarnell J, Arveiler D, et al. Relative contribution of lipids and Apolipoproteins to incident coronary heart disease and ischemic stroke: the PRIME study. *Cerebrovasc Dis*. 2010;30:252–9.
- Ganjali S, Gotto AM Jr, Ruscica M, Atkin SL. Monocyte-to-HDL-cholesterol ratio as a prognostic marker in cardiovascular diseases. *J Cell Physiol*. 2018;233:9237–46.
- Zhang Y, Li S, Guo YL, Wu NQ, Zhu CG, Gao Y, et al. Is monocyte to HDL ratio superior to monocyte count in predicting the cardiovascular outcomes: evidence from a large cohort of Chinese patients undergoing coronary angiography. *Ann Med*. 2016;48:305–12.
- Kastelein JJ, van der Steeg WA, Holme I, Gaffney M, Cater NB, Barter P, et al. Lipids, apolipoproteins, and their ratios in relation to cardiovascular events with statin treatment. *Circulation*. 2008;117:3002–9.
- Zhong Z, Hou J, Zhang Q, Zhong W, Li B, Li C, et al. Assessment of the LDL-C/HDL-C ratio as a predictor of one year clinical outcomes in patients with acute coronary syndromes after percutaneous coronary intervention and drug-eluting stent implantation. *Lipids Health Dis*. 2019;18:40.
- Hansson GK. Inflammation, atherosclerosis, and coronary artery disease. *N Engl J Med*. 2005;352:1685–95.
- Bartels ED, Christoffersen C, Lindholm MW, Nielsen LB. Altered metabolism of LDL in the arterial wall precedes atherosclerosis regression. *Circ Res*. 2015;117:933–42.
- Forrester JS. Prevention of plaque rupture: a new paradigm of therapy. *Ann Intern Med*. 2002;137:823–33.
- Guo TM, Cheng B, Li KE, Guan SM, Qi BL, Li WZ, et al. Prognostic value of neutrophil to lymphocyte ratio for in-hospital mortality in elderly patients with acute myocardial infarction. *Curr Med Sci*. 2018;38:354–9.
- Murphy AJ, Woollard KJ, Suhartoyo A, Stirzaker RA, Shaw J, Sviridov D, et al. Neutrophil activation is attenuated by high-density lipoprotein and Apolipoprotein A-I in in vitro and in vivo models of inflammation. *Arterioscler Thromb Vasc Biol*. 2011;31:1333–41.
- Soehnlein O. An elegant defense: how neutrophils shape the immune response. *Trends Immunol*. 2009;30:511–2.
- Wang HH, Garruti G, Liu M, Portincasa P, Wang Q-HD. Cholesterol and lipoprotein metabolism and atherosclerosis: recent advances in reverse cholesterol transport. *Ann Hepatol*. 2017;16:21–36.
- Curcic S, Holzer M, Frei R, Pasterk L, Schicho R, Heinemann A, et al. Neutrophil effector responses are suppressed by secretory phospholipase A2 modified HDL. *Biochim Biophys Acta*. 1851;2015:184–93.
- Cogny A, ATGER, Véronique PJL, Soni T, Moatti N. High-density lipoprotein 3 physicochemical modifications induced by interaction with human polymorphonuclear leucocytes affect their ability to remove cholesterol from cells. *Biochem J*. 1996;314:285–92.
- O'Gara PT, Kushner FG, Ascheim DD, Casey DE, Chung MK, Lemos JA, et al. 2013 ACCF/AHA guideline for the management of ST-elevation myocardial infarction: a report of the American College of Cardiology Foundation/American Heart Association task force on practice guidelines. *Circulation*. 2013;127:e362–425.
- Amsterdam EA, Wenger NK, Brindis RG, Casey DE, Ganiats TG, Holmes DR, et al. 2014 AHA/ACC guideline for the Management of Patients with non-ST-elevation acute coronary syndromes: a report of the American College of Cardiology/American Heart Association task force on practice guidelines. *J Am Coll Cardiol*. 2014;64:e139–228.
- Windecker S, Kolh P, Alfonso F, Collet JP, Cremer J, Falk V, et al. 2014 ESC/EACTS guidelines on myocardial revascularization: the task force on myocardial revascularization of the European Society of Cardiology (ESC) and the European Association for Cardio-Thoracic Surgery (EACTS) developed with the special contribution of the European Association of Percutaneous Cardiovascular Interventions (EAPCI). *Eur Heart J*. 2014;35:2541–619.
- Nakatani D, Sakata Y, Suna S, Usami M, Matsumoto S, Shimizu M, et al. Incidence, predictors, and subsequent mortality risk of recurrent myocardial infarction in patients following discharge for acute myocardial infarction. *Circ J*. 2013;77:439–46.
- Canpolat U, Cetin EH, Cetin S, Aydin S, Akboga MK, Yayla C, et al. Association of Monocyte-to-HDL cholesterol ratio with slow coronary flow is linked to systemic inflammation. *Clin Appl Thromb Hemost*. 2016;22:476–82.
- Kundi H, Gok M, Kiziltunc E, Cetin M, Cicekcioglu H, Cetin ZG, et al. Relation between monocyte to high-density lipoprotein cholesterol ratio with presence and severity of isolated coronary artery Ectasia. *Am J Cardiol*. 2015;116:1685–9.

27. Cetin EH, Cetin MS, Canpolat U, Aydin S, Topaloglu S, Aras D, et al. Monocyte/HDL-cholesterol ratio predicts the definite stent thrombosis after primary percutaneous coronary intervention for ST-segment elevation myocardial infarction. *Biomark Med*. 2015;9:967–77.
28. Knunutsor SK, Francesco Z, Jouni K, Kurl S, Laukkanen JA, et al. Is high serum LDL/HDL cholesterol ratio an emerging risk factor for sudden cardiac death? Findings from the KIID study. *J Atheroscler Thromb*. 2017;24:600–8.
29. Wilson PW. Evidence of systemic inflammation and estimation of coronary artery disease risk: a population perspective. *Am J Med*. 2008;121:S15–20.
30. Kehl DW, Iqbal N, Fard A, Kipper BA, De La Parra LA, Maisel AS. Biomarkers in acute myocardial injury. *Transl Res*. 2012;159:252–64.
31. Hickman PE, McGill DA, Talaulikar G, Hiremagalur B, Bromley J, Rahman A, et al. Prognostic efficacy of cardiac biomarkers for mortality in dialysis patients. *Intern Med J*. 2009;39:812–8.
32. Xu LW, Su YY, Zhao YC, Sheng XC, Tong RY, Ying XY, et al. Melatonin differentially regulates pathological and physiological cardiac hypertrophy: Crucial role of circadian nuclear receptor ROR $\alpha$  signaling. *J Pineal Res*. 2019;67:e12579.
33. Montecucco F, Liberale L, Bonaventura A, Vecchie A, Dallegri F, Carbone F. The role of inflammation in cardiovascular outcome. *Curr Atheroscler Rep*. 2017;19:11.
34. Ding S, Nan L, Sheng XC, Zhao YC, Su YY, Xu LW, et al. Melatonin stabilizes rupture-prone vulnerable plaques via regulating macrophage polarization in a nuclear circadian receptor ROR $\alpha$ -dependent manner. *J Pineal Res*. 2019;67:e12581.
35. Pierre R, Thams S, Soehnlein O, Kenne E, Tseng CN, Björkström NK, et al. Distinct infiltration of neutrophils in lesion shoulders in ApoE $^{-/-}$  mice. *Am J Pathol*. 2010;177:493–500.
36. Goldmann BU, Rudolph V, Rudolph TK, Holle AK, Hillebrandt M, Meinertz T, et al. Neutrophil activation precedes myocardial injury in patients with acute myocardial infarction. *Free Radic Biol Med*. 2009;47:79–83.
37. Wang XS, Kim HB, Szuchman-Sapir A, McMahon A, Dennis JM, Witting PK. Neutrophils recruited to the myocardium after acute experimental myocardial infarct generate hypochlorous acid that oxidizes cardiac myoglobin. *Arch Biochem Biophys*. 2016;612:103–14.
38. Yunoki K, Naruko T, Inaba M, Inoue T, Nakagawa M, Sugioka K, et al. Gender-specific correlation between plasma myeloperoxidase levels and serum high-density lipoprotein-associated paraoxonase-1 levels in patients with stable and unstable coronary artery disease. *Atherosclerosis*. 2013;231:308–14.
39. Park JS, Cha KS, Lee HW, Oh JH, Choi JH, Lee HC, et al. Predictive and protective role of high-density lipoprotein cholesterol in acute myocardial infarction. *Cardiol J*. 2018;26:176–85.
40. Gomaschi M, Calabresi L, Franceschini G. Protective effects of HDL against ischemia/reperfusion injury. *Front Pharmacol*. 2016;7:2.
41. Murphy AJ, Woollard KJ, Hoang A, Mukhamedova N, Stirzaker RA, McCormick SP, et al. High-density lipoprotein reduces the human monocyte inflammatory response. *Arterioscler Thromb Vasc Biol*. 2008;28:2071–7.
42. Iscanli MD, Metin Aksu N, Evranos B, Aytemir K, Ozmen MM. Comparison of TIMI and Gensini score in patients admitted to the emergency department with chest pain, who underwent coronary angiography. *Med Sci Monit*. 2014;20:343–9.

## Publisher's Note

Springer Nature remains neutral with regard to jurisdictional claims in published maps and institutional affiliations.

**Ready to submit your research? Choose BMC and benefit from:**

- fast, convenient online submission
- thorough peer review by experienced researchers in your field
- rapid publication on acceptance
- support for research data, including large and complex data types
- gold Open Access which fosters wider collaboration and increased citations
- maximum visibility for your research: over 100M website views per year

**At BMC, research is always in progress.**

Learn more [biomedcentral.com/submissions](https://biomedcentral.com/submissions)

