



Since January 2020 Elsevier has created a COVID-19 resource centre with free information in English and Mandarin on the novel coronavirus COVID-19. The COVID-19 resource centre is hosted on Elsevier Connect, the company's public news and information website.

Elsevier hereby grants permission to make all its COVID-19-related research that is available on the COVID-19 resource centre - including this research content - immediately available in PubMed Central and other publicly funded repositories, such as the WHO COVID database with rights for unrestricted research re-use and analyses in any form or by any means with acknowledgement of the original source. These permissions are granted for free by Elsevier for as long as the COVID-19 resource centre remains active.

# Dissecting the ancient rapid radiation of microgastrine wasp genera using additional nuclear genes

Jonathan C. Banks<sup>\*</sup>, James B. Whitfield

*Department of Entomology, University of Illinois, Urbana Champaign, 505 S Goodwin Ave., Urbana, IL 61801, USA*

Received 24 February 2006; revised 30 May 2006; accepted 1 June 2006

Available online 7 June 2006

## Abstract

Previous estimates of a generic level phylogeny for the ubiquitous parasitoid wasp subfamily Microgastrinae (Hymenoptera) have been problematic due to short internal branches deep in the phylogeny. These short branches might be attributed to a rapid radiation among the taxa, the use of genes that are unsuitable for the levels of divergence being examined, or insufficient quantity of data. We added over 1200 nucleotides from four nuclear genes to a dataset derived from three genes to produce a dataset of over 3000 nucleotides per taxon. While the number of well-supported short branches in the phylogeny increased, we still did not obtain strong bootstrap support for every node. Parametric and nonparametric bootstrap simulations projected that an enormous, and likely unobtainable, amount of data would be required to get bootstrap support greater than 50% for every node. However, a marked increase in the number of well-supported nodes was seen when we conducted a Bayesian analysis of a combined dataset generated from morphological characters added to the seven gene dataset. Our results suggest that, in some cases, combining morphological and genetic characters may be the most practical way to increase support for short branches deep in a phylogeny.

© 2006 Elsevier Inc. All rights reserved.

**Keywords:** Bayesian; Braconidae; Hymenoptera; Morphology; Support

## 1. Introduction

Uncertainty in phylogenetic estimation at higher taxonomic levels is inevitable, due to the confounding effects of factors that may indicate alternative patterns. These factors include the convergence of morphological characters from similar ecological forces, and multiple substitutions in genetic data (“saturation”). Convergence and saturation often result in low bootstrap support values, poor Bremer decay indices or low Bayesian posterior probability values for some branches (Swofford et al., 1996). However, poor branch support can also be caused by failure to use a sufficient quantity of data (Fishbein et al., 2001), use of data that are inappropriate for the level of divergence that is being analysed (de

Queiroz et al., 1995), or rapid evolutionary radiations among taxa (Fishbein et al., 2001). Often, it is difficult to know which factors are operating in any particular case.

Although phylogenies without strong support for all branches are sometimes well accepted, there are situations, such as the study of cophylogenetic relationships between hosts and associates when well-supported phylogenies are important. For example, reconciliation analysis (Page, 1995), the method most commonly used to examine cophylogenetic relationships (Brooks and McLennan, 2003), infers cophylogenetic history from the topology of the host and associate phylogenies and thus requires robust phylogenies to reconstruct the evolutionary history of the relationship between hosts and associates. Other situations requiring robust phylogenies include the forensic use of phylogenies to identify the source of infections such as human immunodeficiency virus (Korber et al., 2000; Rambaut et al., 2001; Worobey et al., 2004) and severe acute respiratory syndrome (SARS) (Guan et al., 2003).

<sup>\*</sup> Corresponding author. Present address: Department of Biological Sciences, The University of Waikato, Private Bag 3105, Hamilton, New Zealand. Fax: +64 7 838 4123.

E-mail address: [j.banks@waikato.ac.nz](mailto:j.banks@waikato.ac.nz) (J.C. Banks).

One example of poor support possibly caused by several factors occurs in the phylogenies estimated for microgastrine wasps (Whitfield et al., 2002). Microgastrinae, a subfamily of Braconidae (Hymenoptera), is a speciose group with approximately 1400 described species in over 55 genera, and it has been estimated that there may actually be 5000 to 10,000 species worldwide (Whitfield, 1997b; Whitfield et al., 2002). Microgastrine wasps lay their eggs on lepidopteran larvae, and the wasp larvae develop while consuming the tissues of the lepidopteran larvae (Whitfield, 1997b; Whitfield et al., 2002). Many microgastrine wasp species have been transferred around the world to aid in the control of crop pests (Whitfield, 1997b; Whitfield et al., 2002). All microgastrine wasps have inherited an association with polydnviruses, which are incorporated into the wasp genomes and help the wasp larvae evade lepidopteran immune systems (Whitfield and Asgari, 2003). It has therefore been of considerable coevolutionary interest to compare the phylogenetic histories of the wasps and those of the viruses. A robust phylogenetic framework is essential for producing a useful and informative classification for this large, economically and ecologically important insect group.

Previous work that estimated a phylogeny for the microgastrines from 2300 nucleotides from three genes (*16S*, *28S* and *COI*) and 53 morphological characters found a tree with low bootstrap support for many branches (Mardulyn and Whitfield, 1999; Whitfield et al., 2002). The poorly supported branches in the microgastrine phylogenies are mainly short internal branches (Mardulyn and Whitfield, 1999; Whitfield et al., 2002). It was proposed that the short branches might have arisen from a rapid radiation as the microgastrines colonised new lepidopteran host species (Mardulyn and Whitfield, 1999), which themselves may have been diversifying in the early Tertiary (Grimaldi, 1999; Whitfield, 2002). Support for the rapid radiation of microgastrines was bolstered by the fact that the same branches were estimated to be short from multiple data sources. However, it was also acknowledged that the poorly supported short branches may have been due to insufficient data or the use of genes with rates of divergence that are inappropriate for the levels of divergence between the taxa (Mardulyn and Whitfield, 1999).

Here we present analyses of data from two mitochondrial and five nuclear genes, including the genetic data (*16S*, *28S* and *COI*) and 53 morphological characters analysed by Whitfield et al. (2002). These analyses show that completely robustly supported phylogenies for Microgastrinae are unlikely to be estimated from genetic data alone. We use parametric and nonparametric bootstrapping of simulated datasets to estimate how much data would be required to resolve the phylogeny with every branch having nonparametric bootstrap values greater than 50%. The simulations show that unless an impractically large amount of molecular data is obtained, the use of morphological characters may be necessary to produce a completely robustly supported phylogeny that can be used to examine cophyloge-

netic relationships between microgastrine wasps and polydnviruses.

## 2. Methods

Wasps were stored in 100% ethanol at 4°C until genomic DNA could be extracted. Specimens were identified by JBW to genus, and to species where possible, using morphological characters and often also host data. Taxa from which sequences were obtained are listed in Table 1. Because we had few sequences from *Apanteles canarsiae* we pooled sequences for *A. canarsiae* with *A. galleriae* and the resulting “chimera” is labelled *Apanteles* sp. in the phylogenies. Whole wasps were macerated using mini-mortar and pestles and the DNA extracted using Qiagen DNeasy tissue extraction kits. Polymerase chain reactions (PCR) were carried out with an Eppendorf Mastercycler thermocycler. PCR consisted of 2.5 µL of Hotmaster buffer (Eppendorf), 1.2 µL of dNTPs (8 mM), 2.5 µL of each primer (2.5 µM), 0.125 µL Hotmaster *Taq* (5 units/µL, Eppendorf), 0.8 µL of DNA and 15.375 µL water. PCRs consisted of an initial denaturing step of 94°C for 2 min, followed by 35 cycles of 94°C for 20s, 20s at the temperatures listed in Table 2, 65°C for 40 to 60s depending on the size of the target region, and a final step of 65°C for 5 min. Primer sequences are listed in Table 2. A negative control was incorporated in each amplification round using water rather than DNA. PCR products were purified using Qiagen QIAquick kits. Sequencing was carried out on an ABI 3730 capillary sequencer.

### 2.1. Gene selection

The three genes, *16S*, *COI* and *28S*, originally used for this group were selected for their broad use among different groups of insects, ease of amplification across all taxa and because they provide resolution at several phylogenetic levels. *16S* has been used to resolve intra-family relationships in Hymenoptera (Whitfield and Cameron, 1998). The nuclear gene *28S* (including the D2 and D3 expansion loops) has provided a strong signal for intermediate and moderately deep levels in the phylogeny (Belshaw et al., 1998; Belshaw and Quicke, 1997; Cameron and Mardulyn, 2001; Cameron and Williams, 2003; Downton and Austin, 1998; Mardulyn and Whitfield, 1999; Michel-Salzat and Whitfield, 2004; Whitfield, 2002; Whitfield et al., 2002; Wiegmann et al., 2003) and retains at least some signal at the species level. *COI* has been found to saturate quickly at the third position while remaining quite “conserved” at the first two positions due to a small number of sites free to vary (Mardulyn and Whitfield, 1999). Thus, it has proven highly useful at lower levels to detect species boundaries (Hebert et al., 2003a, 2004, 2003b) but has tended to fail at higher levels, especially in divergence time estimation studies (e.g., Whitfield, 2002).

We added sequences from four nuclear genes to the dataset of Whitfield et al. (2002). *Arginine kinase* has been used to resolve bee relationships at species and tribal level (Danforth et al., 2005; Kawakita et al., 2003). The nuclear

Table 1  
Taxa sequenced and Genbank Accession numbers

	16S	28S	Arginine kinase exon 1	Arginine kinase exon 2	COI	EF1 $\alpha$	Opsin exon 1	Opsin exon 2	Wingless
<i>Alphomeloni</i> sp.	AF102752	AF102732	DQ538920	DQ538866	AF102707	DQ538631	DQ538754	DQ538696	DQ538574
<i>Apanteles canarsiae</i>	AF102750	AF102728							
<i>Apanteles galleriae</i>					DQ538812	DQ538632	DQ538755	DQ538697	DQ538575
<i>Apanteles nephopteris</i>	AF102763	AF102745	DQ538921	DQ538867	DQ538813	DQ538633	DQ538756	DQ538698	DQ538576
<i>CARDIOCHILES</i> sp.	DQ538553		DQ538961	DQ538901	DQ538843	DQ538672	DQ538795	DQ538737	DQ538613
<i>CHELONUS</i> sp.	DQ538554	AJ535956		DQ538902	DQ538844	DQ538673	DQ538796	DQ538738	DQ538614
<i>Choeras</i> sp.	DQ538526	AY044218	DQ538922	DQ538868		DQ538634	DQ538757	DQ538699	DQ538577
<i>Cotesia congregata</i>	DQ538527	DQ538975	DQ538923	DQ538869	DQ538815	DQ538635	DQ538758	DQ538700	DQ538578
<i>Cotesia electrae</i>	DQ538529	AJ535938	DQ538924	DQ538870	DQ538817	DQ538637	DQ538760	DQ538702	
<i>Cotesia flaviconchae</i>	DQ538531	DQ538978	DQ538926	DQ538872	DQ538819	DQ538639	DQ538762	DQ538704	DQ538582
<i>Cotesia hyphantriae</i>	DQ538532	DQ538979	DQ538927	DQ538873	DQ538820	DQ538640	DQ538763	DQ538705	DQ538583
<i>Cotesia melanoscela</i>	DQ538533	DQ538980	DQ538928	DQ538874	DQ538821	DQ538641	DQ538764	DQ538706	DQ538584
<i>Cotesia obscuricornis</i>	DQ538534	DQ538981	DQ538929	DQ538875	DQ538822	DQ538642	DQ538765	DQ538707	DQ538585
<i>Cotesia rubecula</i>	DQ538535	DQ538982	DQ538930	DQ538876	DQ538823	DQ538643	DQ538766	DQ538708	DQ538586
<i>Cotesia sesamiae</i>	AF110827	AJ535952				DQ538645	DQ538768	DQ538710	DQ538588
<i>Deuterixys rimulosa</i>	DQ538537	AYO44219	DQ538931	DQ538877		DQ538646	DQ538769	DQ538711	DQ538589
<i>Diolcogaster bakeri</i>	DQ538538	AJ535954				DQ538647	DQ538770	DQ538712	DQ538590
<i>Diolcogaster schizurae</i>	AF102759	AF102741	DQ538932	DQ538878	DQ538825	DQ538648	DQ538771	DQ538713	DQ538591
<i>Dolichogenidea lacteicolor</i>	AF102761	AF102742	DQ538933	DQ538879	DQ538826	DQ538649	DQ538772	DQ538714	DQ538592
<i>EPSILOGASTER</i> sp.	DQ538555	DQ538997	DQ538955	DQ538903	DQ538845	DQ538674	DQ538797	DQ538739	DQ538615
<i>Fornicia</i> sp.	AY044195				AY044210	DQ538650	DQ538773	DQ538715	
<i>Glyptapanteles indiensis</i>	AF102757	AF102738	DQ538934	DQ538880	DQ538827	DQ538651	DQ538774	DQ538716	DQ538593
<i>Glyptapanteles porthetriae</i>	AF102758	AF102739	DQ538935	DQ538881	DQ538828	DQ538652	DQ538775	DQ538717	DQ538594
<i>Hypomicrogaster</i> sp. Costa Rica	DQ538539		DQ538936	DQ538882	DQ538829		DQ538776	DQ538718	DQ538595
<i>Hypomicrogaster ecdytolophae</i>	AF102756	AF102757			AF102712	DQ538653	DQ538777	DQ538719	DQ538596
<i>Microgaster canadensis</i>	U98154	AF102733	DQ538937	DQ538883	AF102708	DQ538654	DQ538778	DQ538720	DQ538597
<i>Microplitis demolitor</i>	DQ538540	DQ538985	DQ538938	DQ538884	DQ538830	DQ538655	DQ538779	DQ538721	DQ538598
<i>MIRAX</i> sp.	DQ538556	AF102747	DQ538956		DQ538846	DQ538675	DQ538798	DQ538740	DQ538616
<i>Parapanteles</i> sp.	AF102753	AF102734	DQ538939	DQ538885	DQ538831	DQ538656	DQ538780	DQ538722	DQ538599
<i>PHANEROTOMA</i> sp.	DQ538557	DQ538998	DQ538957	DQ538904	DQ538847	DQ538676			DQ538617
<i>Pholetesor bedelliae</i>	U68153	AF102740	DQ538940	DQ538886	AF102715	DQ538657	DQ538781	DQ538723	DQ538600
<i>Prasmodon</i> sp. 1	DQ538541	DQ538986	DQ538941	DQ538887	DQ538832	DQ538658	DQ538782	DQ538724	DQ538601
<i>Prasmodon</i> sp. 2	AF102748	AF102725	DQ538942	DQ538888	AF102700	DQ538659	DQ538783	DQ538725	DQ538602
<i>Promicrogaster</i> sp. 1	DQ538542	DQ538987	DQ538943	DQ538889		DQ538660	DQ538784	DQ538726	DQ538603
<i>Promicrogaster</i> sp. 2	DQ538543	DQ538988	DQ538944	DQ538890	DQ538833	DQ538661	DQ538785	DQ538727	DQ538604
<i>Pseudapanteles</i> sp.	DQ538545	DQ538990	DQ538945	DQ538892	DQ538835	DQ538663	DQ538787	DQ538729	
<i>Rhygoplitis</i> sp. 1	DQ538546	DQ538991	DQ538946	DQ538893	DQ538836	DQ538664	DQ538788	DQ538730	DQ538606
<i>Rhygoplitis</i> sp. 2	DQ538547	DQ538992	DQ538947	DQ538894	DQ538837	DQ538665	DQ538789	DQ538731	DQ538607
<i>Sendaphne</i> sp.	DQ538548	DQ538993	DQ538948	DQ538895	DQ538838	DQ538666	DQ538790	DQ538732	DQ538608
<i>Snellenius</i> sp. 1	AF102749	AF102776	DQ538949	DQ538896	DQ538839	DQ538667	DQ538791	DQ538733	DQ538609
<i>Snellenius</i> sp. 2	DQ538549	DQ538994	DQ538950	DQ538897	DQ538840	DQ538668	DQ538792	DQ538734	DQ538610
<i>TOXONEURON NIGRICEPS</i>	U68151	AF029120		DQ538905	AF102724	DQ538677	DQ538800	DQ538742	DQ538618
<i>Venaides</i> sp.	DQ538550		DQ538951	DQ538898			DQ538793	DQ538735	
<i>Venus</i> sp.	DQ538551	DQ538995	DQ538952	DQ538899	DQ538841	DQ538670	DQ538794	DQ538736	DQ538611
<i>VENTURIA CANESCENS</i>	DQ538560	DQ539001	DQ538960	DQ538908	DQ538851	DQ538680	DQ538801	DQ538743	DQ538619
<i>Xanthomicrogaster</i> sp.	DQ538552	DQ538996	DQ538953	DQ538900		DQ538671			DQ538612

Where accession numbers are absent, we failed to get sequences for that region of that taxon. Taxa in capitals are outgroups.

gene *EF1 $\alpha$*  has been used extensively to resolve lepidopteran relationships at intermediate phylogenetic levels (Cho et al., 1995; Friedlander et al., 1998; Mitchell et al., 1997, 2000, 2006; Wiegmann et al., 2000) and has been used recently in a number of studies on Hymenoptera (Cameron, 2003; Danforth et al., 2004; Danforth and Ji, 1998; Kawakita et al., 2003; Leys et al., 2002; Michel-Salz et al., 2004). The gene occurs in at least two divergent copies in most Hymenoptera (originally reported by Danforth and Ji, 1998), but these copies are easily separated by PCR once taxon-specific primers are developed. We used primers that amplify the F2 copy in bumble bees (Kawakita et al., 2003).

*Long wavelength rhodopsin (opsin)* has been used to resolve relationships among bees (Mardulyn and Cameron, 1999), and is especially useful for intermediate levels of phylogeny (from species up to intergeneric and tribal levels—Cameron and Mardulyn, 2001; Cameron and Mardulyn, 2003; Cameron and Williams, 2003; Danforth et al., 2004; Kawakita et al., 2003; Michel-Salz et al., 2004; Michel-Salz and Whitfield, 2004), despite early reservations (Ascher et al., 2001). *Wingless* is less variable than many mtDNA genes, but more variable than most of the other nuclear protein-coding genes we sequenced in this study. Thus *wingless* tends to be useful at the generic

Table 2  
Primers used in this study

Gene	Primer name	Sequence	Annealing temperature (°C)	Reference
16S			52–57	
Forward	16S outer	CTTATTCAACATCGAGGTC		(Whitfield, 1997a)
Reverse	16SWb	CACCTGTTTATCAAAACAT		(Dowton and Austin, 1994)
28S			55–62	
Forward	28SF	CACCTGTTTATCAAAAACAT		(Mardulyn and Whitfield, 1999)
Reverse	28SR	TAGTTCACCATCTTTCGGGTC		(Mardulyn and Whitfield, 1999)
Arginine kinase			47–50	
Forward	F2	GACAGCAARTCTCTGCTGAAGAA		(Kawakita et al., 2003)
Forward	intF	GTNTCNACYCGTGRAGATGYGG		This study
Reverse	R2	GGTYTTGGCATCGTTGTGGTAGATAC		(Kawakita et al., 2003)
Reverse	intR	AGRGRTRCRRRCRTDCCCRAAGTC		This study
COI			50–53	
Forward	LCO1490	GGTCAACAAATCATAAAGATATTGG		(Folmer et al., 1994)
Reverse	HCO2198	TAAACTTCAGGGTGACCAAAAAATCA		(Folmer et al., 1994)
EF1a			47–52	
Forward	EF1A1F	AGATGGGYAARGGTTCCCTCAA		(Belshaw and Quicke, 1997)
Reverse	EF1A1R	AACATGTTGTCDCCGTGCCATCC		(Belshaw and Quicke, 1997)
Rhodopsin			47–55	
Forward	OpsFor2	GGATGTASCTCCATTTGGTC		This study
Reverse	Ops3'2	AVHGATGCRCRRTTCATTTTCT		This study
Wingless			47–53	
Forward	Wg1	GARTGYAARTGYCAYGGYATGTCTGG		(Brower and DeSalle, 1998)
Reverse	Wg2	ACTICGRCACCARTGGAATGTRCA		(Brower and DeSalle, 1998)

level rather than at higher hierarchical levels (Brower and DeSalle, 1998).

## 2.2. Alignment

Sequences were aligned with Clustal X (Thompson et al., 1997). Alignment of *COI*, *EF1 $\alpha$* , and *wingless* sequences was straightforward as there were few insertions or deletions. The alignment of *arginine kinase* and *opsin* sequences was straightforward once an intron in each gene had been removed. There were several variable length-regions of *16S* and *28S* where it was difficult to assign homology. Regions of *16S* and *28S* that could not be aligned unambiguously were omitted from the analysis.

## 2.3. Testing for incongruence

We tested for incongruence between genes using the incongruence length difference test (Farris et al., 1994, 1995) implemented in PAUP\*4.0b10 (Swofford, 2002) as the partition homogeneity test. We conducted 100 replicates and compared genes in both a pairwise manner and each gene to the rest of the combined sequence data with that gene excluded. Parsimony uninformative characters were removed before each test. We also tested the data for stationarity (equal nucleotide proportions between taxa) using the  $\chi^2$  test in PAUP\*.

## 2.4. Phylogeny estimation

We used PAUP\* to conduct maximum parsimony (MP), maximum likelihood (ML) and LogDet phylogenetic anal-

yses. LogDet is a distance based method that is less affected than MP when taxa differ in their base frequencies (Lockhart et al., 1994). The Akaike Information Criterion as implemented in ModelTest 3.06 (Posada, 2000; Posada and Crandall, 1998) was used to select the model and estimate model parameters (GTR + gamma + proportion of invariable sites (Rodríguez et al., 1990; Tavaré, 1986; Yang et al., 1994); base frequencies  $A = 0.3166$ ,  $C = 0.1589$ ,  $G = 0.1819$ ; rate matrix  $AC = 1.7463$ ,  $AG = 11.0123$ ,  $AT = 8.9781$ ,  $CG = 2.1939$ ,  $CT = 14.8349$ ;  $\gamma = 0.6963$ ; proportion of invariable sites = 0.3614) from all seven genes combined for the ML analysis.

MrBayes 3.1 (Huelsenbeck and Ronquist, 2001; Ronquist and Huelsenbeck, 2003) was used to generate Bayesian estimates of microgastrine phylogeny. We used a mixed model approach with eight partitions corresponding to the morphological characters and the seven gene regions. The models used for each of the seven genes were GTR (Tavaré, 1986) plus a proportion invariable sites plus gamma (Rodríguez et al., 1990; Yang et al., 1994). MrBayes estimated the model parameters from the data using one cold and three heated Markov chains. The Monte Carlo Markov chain length was 2,000,000 generations and we sampled the chain every 100 generations. We discarded the first 5000 samples as burnin and thus estimated our phylogeny and posterior probabilities from a consensus of the last 15,000 sampled trees.

## 2.5. Assessing the effect of branch length on bootstrap support

To compare the branch lengths of branches with bootstrap support greater than 50% to branches with less than

50% support, we reduced our data set to the 27 taxa for which we had data for all seven genes and estimated the phylogeny for the 27 taxa under the MP criterion. The MP analysis found three most parsimonious trees. We then loaded one of the three most parsimonious trees found from the MP analysis into PAUP\* as a constraint tree and used MP to estimate the branch length for the constraint tree for individual genes. Branches for the constraint tree were categorised as either bootstrap support >50% or <50% and branch lengths for the branches for each gene were recorded and compared using a Student's *t* test in Systat 9 (SPSS, 1998).

## 2.6. Assessing the amount of data needed

Pseudoreplicate datasets one and a half, two, three, four, five and 10 times the size of our dataset were constructed from the aligned data by altering the number of characters re-sampled in the nonparametric bootstrap command of PAUP\*. These pseudoreplicate datasets were then analysed under the MP criterion and bootstrapped to estimate the amount of data that would be required to estimate phylogenies with all nodes having bootstrap support greater than 50%. Pseudoreplicate-data sets one and a half, two, three, four, five and 10 times the size of our dataset were also generated using a parametric approach with Seq-Gen (Rambaut and Grassly, 1997) from the ML equation calculated from the original data by Modeltest 3.06. Nonparametric bootstrap values were then obtained with PAUP\* from the MP trees estimated from the data sets produced by Seq-Gen. This approach assumes that the data added will have similar properties to the data already obtained. This seems a valid assumption given that the genes we sequenced cover a range of evolutionary rates.

## 2.7. Assessing the effect of number of taxa

To assess the effect of altering the number of taxa, we randomly deleted taxa from our actual dataset to give datasets containing 15, 20, 25, 30, 35 and 40 taxa. We then obtained nonparametric bootstrap values for the branches from 100 replicates using MP.

## 3. Results

We added 1248 nucleotides to the previously published dataset and analysed a total of 3031 nucleotides (including gaps). We used primers that bound to a more conserved region of *COI* and thus reduced the previously published *COI* sequences (Mardulyn and Whitfield, 1999) from 1235 nucleotides to 419 nucleotides that were homologous with our sequences. Levels of variation between species and genera for the seven genes differed with *28S*, *arginine kinase*, *EF1 $\alpha$* , *opsin* and *wingless* diverging more slowly than *16S* and *COI*, which quickly saturated at the generic level (Fig. 1).

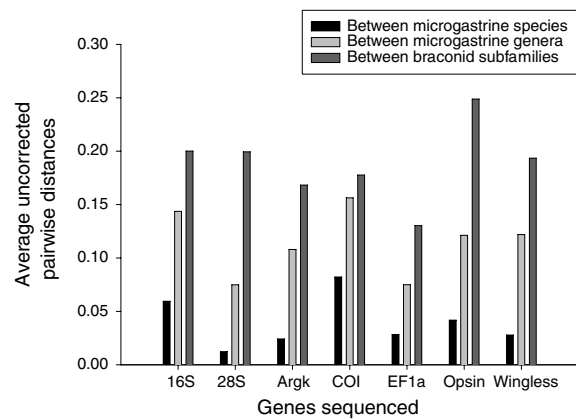


Fig. 1. Average uncorrected pairwise distances between microgastrine species and genera, and braconid subfamilies for the seven genes sequenced. *Arginine kinase* (*Argk*), *elongation factor 1 alpha* (*EF1 $\alpha$* ), *opsin* and *wingless* are the genes added to the original dataset of Mardulyn and Whitfield (1999) and Whitfield (2002).

The ILD test found 17 of the 21 pairwise comparisons of the genes were significantly incongruent ( $P \leq 0.01$ ). The four comparisons that were not significantly incongruent were *28S* to *arginine kinase*, *EF1 $\alpha$*  and *wingless*, and *EF1 $\alpha$*  to *16S*. Six of the seven comparisons of individual genes to the rest of the combined molecular data (with each individual gene excluded) revealed significant differences ( $P=0.01$ ). The exception was *arginine kinase*, which was not significantly heterogeneous with the combined data ( $P=0.6$ ).

The  $\chi^2$  test of sequence stationarity in PAUP\* found there was significant heterogeneity in nucleotide proportions. A nonsignificant result was obtained when the third positions of codons in protein coding genes were excluded.

A maximum parsimony analysis of all seven genes for all taxa found three equally parsimonious trees of length 6861; consistency index, excluding uninformative characters = 0.30; retention index = 0.44 from 3031 characters of which 1494 were constant and 1207 were parsimony informative. The strict consensus tree of the three most parsimonious trees is shown in Fig. 2.

A MP analysis found a single most parsimonious tree when third positions were excluded (result not shown) that was broadly congruent with the MP tree estimated from all positions (Fig. 2). Excluding third positions did not appreciably alter bootstrap support values obtained with MP, as 15 branches still had bootstrap support of less than 50%. Deleting third positions altered relationships found by MP within more recently diverged clades, but most deep and mid level relationships were not altered. The exception was that *Choeras* was placed as sister to *Sendaphne* and *Promicrogaster*, rather than with *Fornicia* and *Deuterixys*, when third positions were excluded, a more reasonable result based on morphology.

Both MP and Bayesian methods (Figs. 2 and 3) supported Microgastrinae as a monophyletic group. Both methods found broadly similar relationships. However, the placement of *Fornicia* differed greatly depending on the

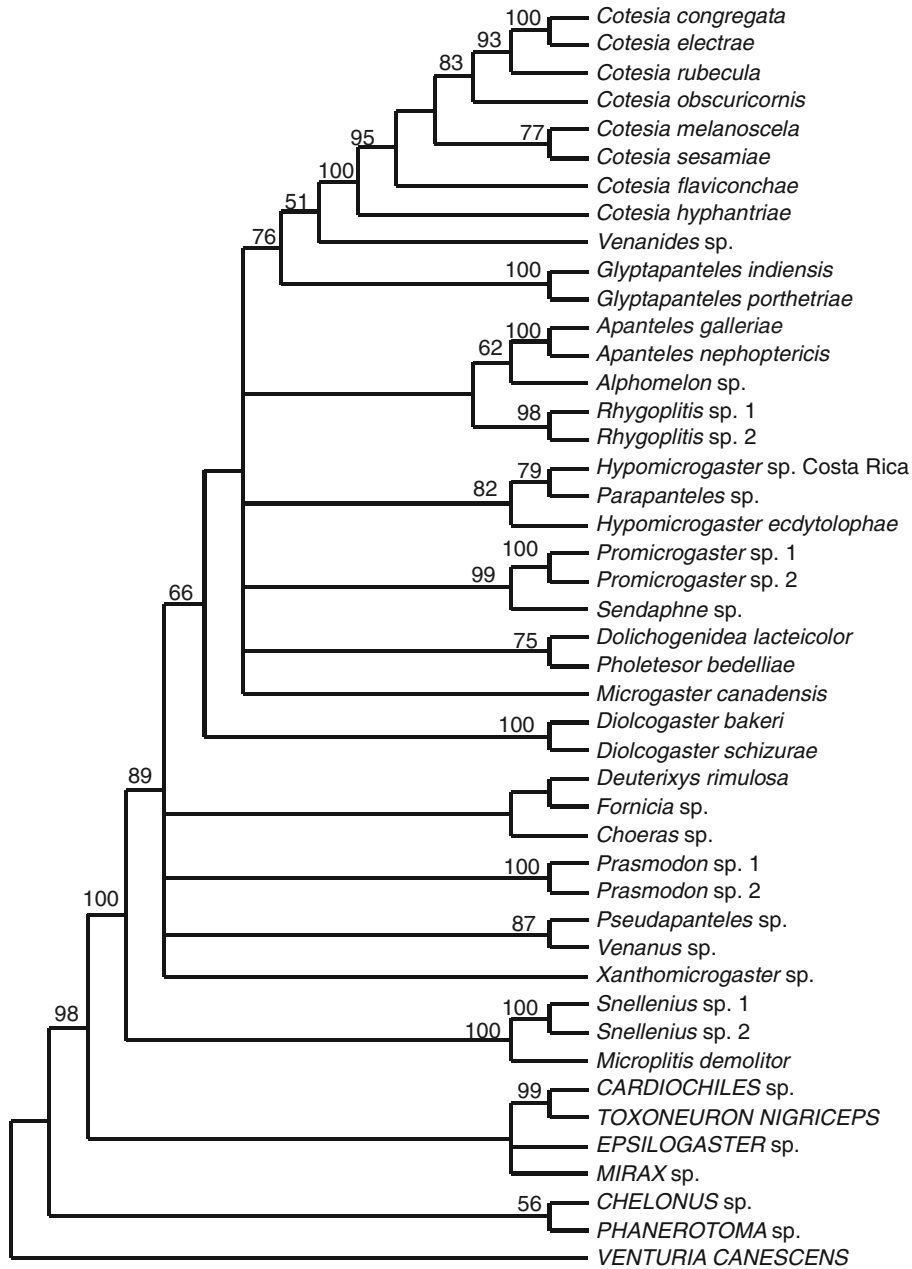


Fig. 2. Strict consensus of the three most parsimonious trees (tree length 6861; consistency index, excluding uninformative characters, 0.30; retention index 0.44) obtained from a MP analysis of 3031 nucleotides from seven genes. Numbers above the branches are percentage bootstrap support values >50 (from 100 replicates).

method of analysis. Maximum parsimony placed *Fornicia* as a sister taxon to *Deuterixys rimulosa* whereas the Bayesian analysis placed *Fornicia* in a clade with *Hypomicrogaster* and *Parapanteles*. We were unable to get sequences from three genes for *Fornicia*, and it is possible that missing data are causing the two methods to differ in their placement of *Fornicia*.

The numbers of branches with high or low levels of support differed slightly for the phylogenies estimated using MP and Bayes. Maximum parsimony had 14 branches with bootstrap support of less than 50%, whereas the Bayesian tree had 10 branches with posterior probability values of

less than 0.9. There was no obvious trend for branches to have higher Bayesian posterior probabilities than MP bootstrap support values. Some branches were supported with posterior probabilities higher than 0.9 but had low bootstrap support, while some branches that had posterior probabilities much less than 0.9 received high bootstrap support values. For example, grouping *Hypomicrogaster ecdytolophae* and *Parapanteles* sp. as sisters received a bootstrap value of 79% but had a posterior probability of 0.56. It must of course be kept in mind that in these comparisons, both the branch support measure and the optimality criterion for tree estimation differ.

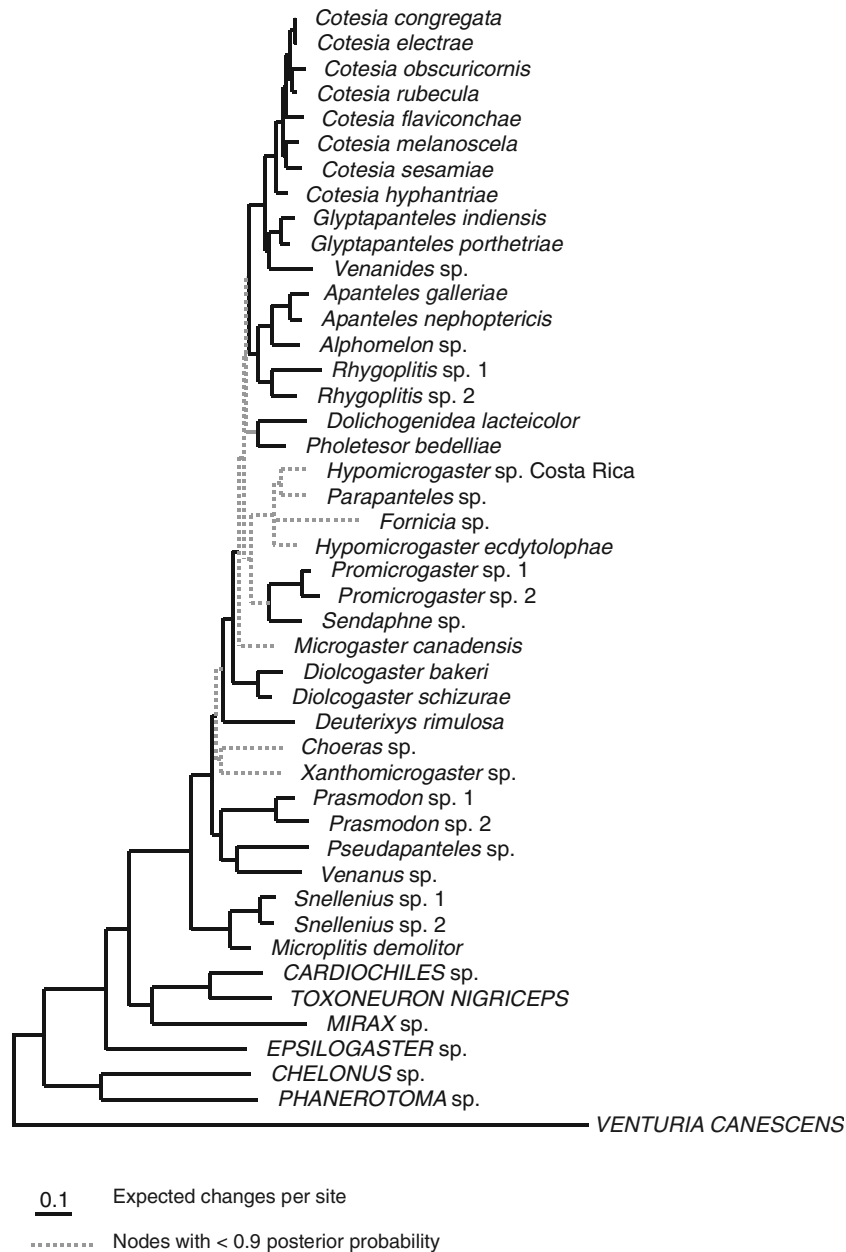


Fig. 3. Majority rule consensus tree from 15,000 trees estimated from seven genes using MrBayes 3.1. Broken lines represent branches with posterior probabilities of less than 0.9.

The LogDet analysis found a single tree (result not shown) that was broadly congruent with both the MP and Bayesian trees. Nine nodes had bootstrap support of less than 50% (similar to the other methods). Nodes in the Log-Det tree that differed from the MP and Bayesian trees did not have high levels of bootstrap support.

### 3.1. The effect of branch length on bootstrap support

Branches with bootstrap support of <50% in phylogenies obtained from the individual genes were significantly shorter than branches with bootstrap support >50% (mean<sub>bootstrap <50%</sub> = 5.5, SE = 0.7; mean<sub>bootstrap >50%</sub> = 10.5, SE = 0.7; Student's  $t = 5.21$ ,  $df = 127.3$ ,  $P < 0.001$ ) in the

phylogeny (Fig. 4) estimated for the 27 taxa for which we had sequences for all seven genes.

### 3.2. Simulations

The nonparametric approach using PAUP\* to resample more characters from the original dataset found that the number of branches in the phylogeny with less than 50% bootstrap support reduced reasonably quickly until the dataset contained approximately 12,000 nucleotides (Fig. 5). After 12,000 nucleotides the rate of reduction of poorly supported branches decreased, and even with ten times more data than we have obtained five nodes still had bootstrap support of less than 50%. The parametric



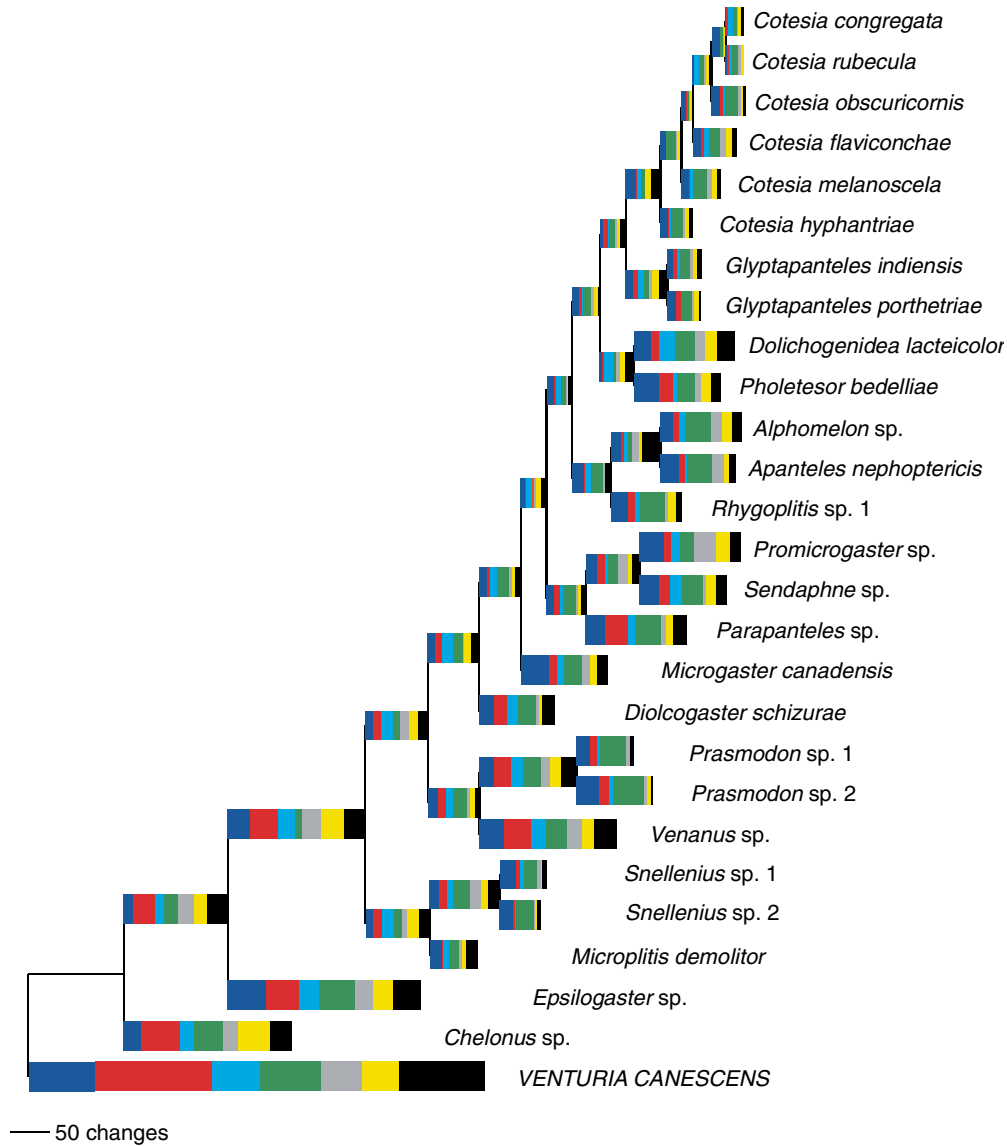


Fig. 4. Maximum parsimony tree estimated for the taxa for which we have sequences for all seven genes. The horizontal length of each colour indicates the number of parsimony informative changes for each gene on the branch (blue = *16S*, red = *28S*, light-blue = *arginine kinase*, green = *COI*, grey = *EFlz*, yellow = *opsin*, black = *wingless*).

approach using Seq-Gen found that all branches of the phylogeny would have greater than 50% bootstrap support at around 12,000 nucleotides (Fig. 5). However, the non-parametric approach is more likely to be realistic, simulating normal “messy” data.

### 3.2.1. Number of taxa

Reducing the number of taxa in the dataset had little effect on the proportion of branches in the phylogeny with less than 50% bootstrap support (Fig. 6). Between 50% and 71% of the branches had bootstrap support of less than 50% depending of the number of taxa in the data set.

### 3.2.2. Addition of morphological characters

The Bayesian analysis of 53 morphological and 3031 molecular characters reduced the number of nodes with

posterior probabilities of less than 0.9 from nine branches to three (Fig. 7). The phylogeny estimated from the Bayesian analysis of the seven genes alone differed from the phylogeny estimated from seven genes and 53 morphological characters in only two places. *Fornicia* moved from being part of a clade with *Hypomicrogaster* and *Parapanteles* (Fig. 3) in the phylogeny estimated from the genetic data alone, to being a sister to *Venanides*, *Glyptapanteles* and *Cotesia* (Fig. 7). *Dolichogenidea* and *Pholetesor* moved to being a sister to *Hypomicrogaster*, *Promicrogaster*, *Parapanteles* and *Sendaphne* in the combined genetic and morphological dataset. The placements of *Fornicia* and *Pholetesor* both had posterior probabilities of less than 0.9 in the phylogeny estimated from genes alone and only the branch placing *Fornicia* improved markedly in support (from 0.63 to 0.98).

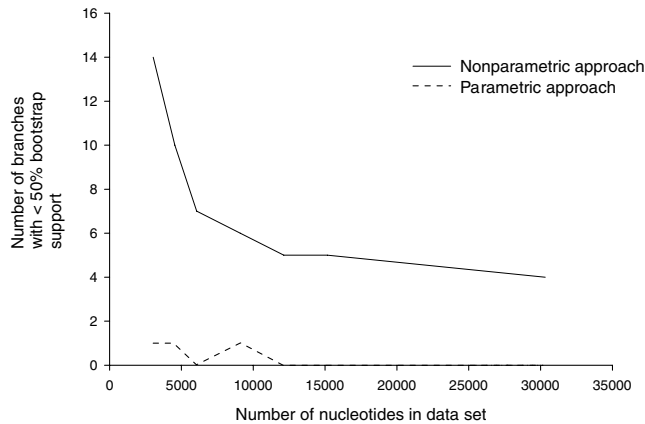


Fig. 5. The number of branches with less than 50% bootstrap support obtained by increasing the number of characters resampled in the bootstrap function of PAUP\* (nonparametric approach) or by using Seq-Gen to generate data from the likelihood equation calculated from the original data (parametric approach).

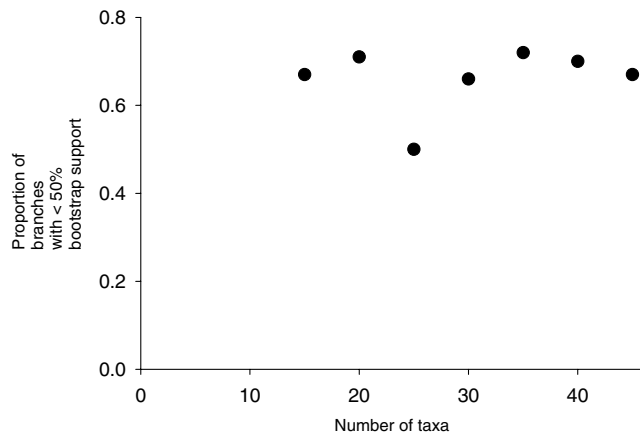


Fig. 6. The proportion of branches with less than 50% bootstrap support for a phylogeny estimated using MP from the actual dataset of 45 taxa and with various numbers of taxa deleted randomly.

#### 4. Discussion

We identified genes that diverge more slowly than those already sequenced for Microgastrinae and their addition resulted in a more robust phylogeny for Microgastrinae, as assessed by higher nonparametric bootstrap proportions and posterior probabilities. However, despite substantially increasing the size of the dataset, we still did not obtain a completely robustly supported phylogeny using several methods of phylogeny estimation. Indeed, our nonparametric bootstrap simulations suggest we are unlikely to get a completely supported phylogeny from DNA alone. Although bootstrap support is not a direct measure of phylogenetic accuracy, most authors at least implicitly interpret the figures as rough measures of statistical support for a node (Buckley and Cunningham, 2002).

Support for the branches in our phylogeny could not be increased markedly by the method of analysis alone. The

LogDet method of analysis is less affected by nonstationary data than is MP (Lockhart et al., 1994). However, using the LogDet transformation also did not produce a totally robustly supported tree. Excluding character sets did not produce a totally supported tree. For example, when a MP analysis of all data was compared to a MP analysis of the data with the third codon positions excluded, similar numbers of nodes had bootstrap support greater than 50%.

A marked improvement in support for our phylogeny was seen however when we added morphological characters and used a mixed model Bayesian analysis. Several other studies on diverse groups such as weevils (Marvaldi et al., 2002), molluscs (Collin, 2003) and feather mites (Dabert et al., 2001) have noted improvements in resolution and statistical support when analyses are conducted on combined morphological and DNA data. Dabert et al. (2001) also noted that molecular data alone tended to produce trees with better resolution and support at the terminal tips, and poor resolution and poor support deeper in the phylogeny, whereas the opposite (i.e., better resolution and support deeper in the phylogeny and poor resolution and support at the tips) occurred for phylogenies estimated from morphological data alone.

Short branches deep in a phylogeny are notoriously difficult to resolve. These branches will invariably have poor support as they are short due to a paucity of shared derived characters (Mardulyn and Whitfield, 1999) and we found that branches with less than 50% bootstrap support were significantly shorter than branches with greater than 50% support. In the case of the microgastrines, the short branches deeper in the phylogeny may be associated with the radiation of the Ditrysia (which contains 98% of present day lepidopteran species) that occurred from approximately 60 to 70 mya in the late-Cretaceous or early Cenozoic (Grimaldi, 1999). This radiation coincides approximately with the origin of the microgastrine group calculated by Whitfield (2002).

The ideal gene to resolve short deep branches should have a fast rate of divergence at the time of the radiation but then the gene's rate of divergence needs to slow so that informative changes are not obscured by multiple substitutions at each site (Donoghue and Sanderson, 1992; Fishbein et al., 2001). It has been suggested that morphological characters may be more likely than nucleotide substitutions to undergo rapid changes followed by a slowing in the rate of change due to stabilising selection (Fishbein et al., 2001). Thus morphological characters may be a practical method to resolve short deep branches. Also, phenotypic variation is likely influenced by variation in many genes and morphological characters may be a cost effective way to indirectly increase the size of genetic datasets and improve levels of support for phylogenetic estimates.

##### 4.1. Effect of methods

The increase in support for our phylogeny when morphological characters were added to the analysis was not

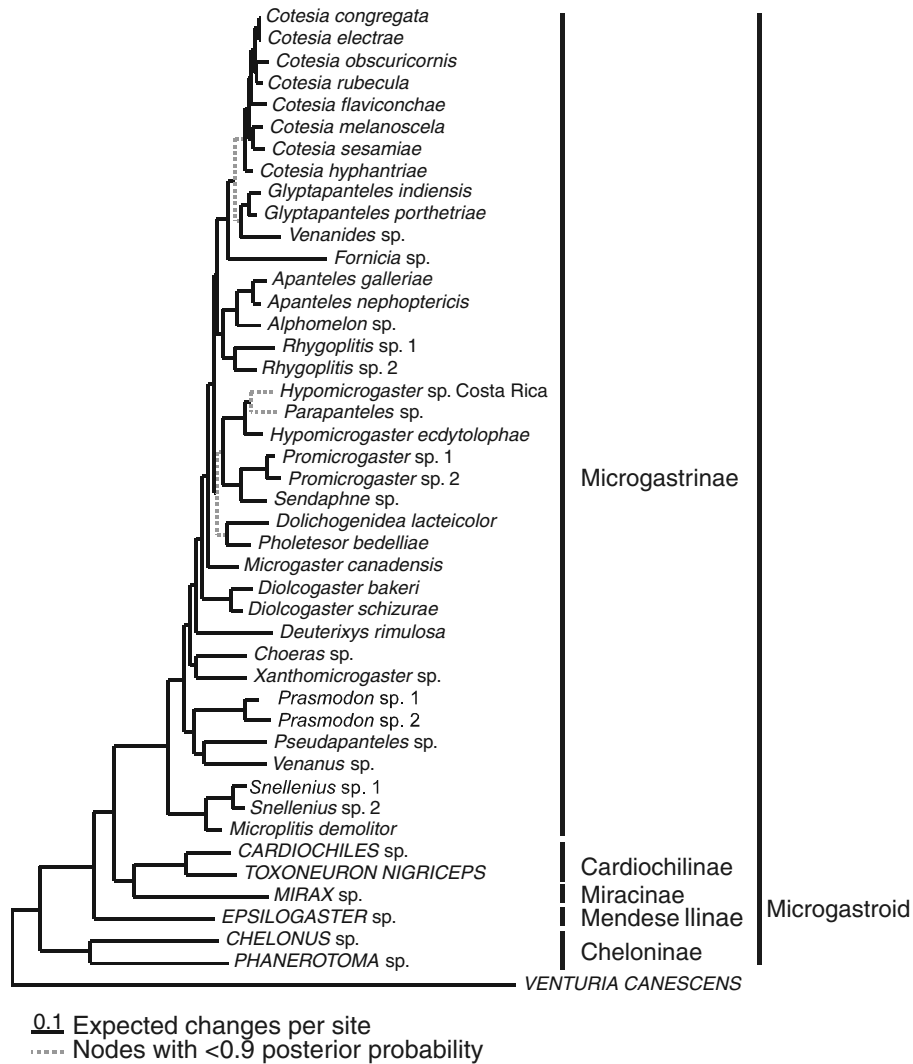


Fig. 7. Phylogeny estimated from seven genes and 53 morphological characters using Bayesian mixed models (see text for details). Broken lines represent nodes with Bayesian posterior probabilities of less than 0.9.

due solely to changing from using bootstrap support of a MP analysis to using the posterior probabilities under a Bayesian approach. The Bayesian phylogeny estimated from the genetic data alone had lower levels of support than the Bayesian tree estimated from both genetic and morphological characters. It has been suggested that Bayesian posterior probabilities tend to be higher than MP bootstrap proportions for the same groups (Erixon et al., 2003). However, it has also been suggested that bootstrap values may be a conservative estimate of support for clades when support for clades is strong (Huelsenbeck and Rannala, 2004; Rannala and Yang, 1996) and it is likely that posterior probabilities give a better estimate of support than bootstrap proportions, especially when the most complex Bayesian models are used (Huelsenbeck and Rannala, 2004). We would have liked to compare bootstrap values of phylogenies generated by ML, rather than MP, to the posterior probabilities of the Bayesian trees but this was impractical due to computational constraints.

#### 4.2. Simulations

The simulations using the bootstrap function in PAUP\* to produce larger character sets from our data suggested that a phylogeny with every branch having more than 50% bootstrap support in a MP analysis was unlikely to be obtained without considerably more data. The approach using Seq-Gen was more optimistic, suggesting complete support was possible with around 12,000 nucleotides. However, the nonparametric method of simulating datasets produces data without gaps or missing data and thus produces a “perfect” dataset that is almost certainly unobtainable in reality. For example, we estimated a phylogeny with only one branch with less than 50% bootstrap support from a dataset simulated with Seq-Gen of the same size as our actual dataset. This compares to 14 branches with less than 50% bootstrap support in the phylogeny estimated from the actual data. The PAUP\* based approach produces datasets that are more realistic as the simulated datasets have gaps

in the sequences and missing data and is therefore more likely to give a better estimate of the data required to estimate a totally bootstrap supported phylogeny.

### 4.3. Incongruent phylogenies

#### 4.3.1. ILD test

The *P*-values of <0.05 obtained for many of the ILD tests does not necessarily mean that conflict between individual genes has reduced bootstrap support for nodes in our phylogeny. There is significant disagreement as to what level of significance should be used to reject partition homogeneity. For example, Cunningham (1997) suggested a critical value of less than 0.01 should be used. There is also controversy over whether significant heterogeneity should preclude combining data derived from different genes for a phylogenetic analysis. Yoder et al. (2001) examined the effect of changing character weighting and/or data combinations on the phylogenetics of slow lorises and found that correct results were poorly supported and even incorrect results were obtained when character weighting and/or data combinations were altered to reduce incongruence (as assessed by the ILD). Likewise, Sullivan (1996) found that combining two heterogeneous datasets produced a better estimate of deer mouse and grasshopper mouse phylogenies than did either gene alone. Barker and Lutzoni (2002) also found from simulations that the ILD test was a relatively poor predictor of the effect of combining datasets on phylogenetic accuracy.

Dolphin et al. (2000) found that when rate differences between the two matrices being assessed reach a certain level, the ILD test could suggest significant heterogeneity despite the two matrices having similar underlying topologies. It seems likely that the marked differences in the divergence rates of the genes we analysed have generated the significant ILD test results. We suggest that we reduced the adverse effects of data heterogeneity by using complex evolutionary models for each partition of our data in a Bayesian analysis.

#### 4.4. Wrong/Lack of data

Inappropriate gene choice has been suggested as a reason why it has been difficult to obtain a robust microgastrine phylogeny (Mardulyn and Whitfield, 1999). Several of the genes we used have been used in other studies of braconid phylogenetics (for example, Belshaw et al., 1998; Mardulyn and Whitfield, 1999; Michel-Salzat and Whitfield, 2004; Min et al., 2005; Whitfield et al., 2002), and in other studies of hymenopteran phylogenetics (Cameron and Mardulyn, 2001; Danforth et al., 2004; Kawakita et al., 2003; Sanchis et al., 2001; Weiblen, 2004). Given that our choice of genes covered deep, medium and shallow divergences and that these genes have been used successfully to estimate robust phylogenies for an enormous variety of taxa, we do not conclude that inappropriate gene choice has caused the poor support for some of the nodes. The contribution to the phylogenies from all the *COI* data is likely subject to long branch attraction

(Felsenstein, 1978; Hendy and Penny, 1989) as this gene has the highest uncorrected pairwise divergences of the seven genes between microgastrine species and yet it has only the fifth highest levels of divergence between the braconid subfamilies. However, using model-based methods for estimating the phylogenies has probably lessened the effect of long branch attraction.

Missing data are also unlikely to have resulted in poor bootstrap support. A phylogeny estimated from those taxa for which we obtained sequences for all seven genes had six branches (of 51 total) with bootstrap support <50% in a MP analysis. The poorly supported branches were significantly shorter than branches with >50% bootstrap support. An examination of the contribution of individual genes to the branch length of the poorly supported branches found that there were few changes in all seven genes for these short branches, suggesting that a rapid radiation (i.e., truly short branches) has indeed occurred.

Insufficient data has also been suggested as a reason for poorly supported phylogenies. Rokas et al. (2003) suggested that 20 genes would be required to obtain mean bootstrap values of 95% with a 95% confidence interval for seven species of *Saccharomyces* yeasts. However, as few as eight genes would give mean bootstrap values of 95% with a 95% confidence interval if nonstationary genes (genes that have markedly shifted nucleotide frequencies for some taxa) were excluded from the *Saccharomyces* analysis (Collins et al., 2005). Deleting the third positions of codons from our data resulted in the genes becoming stationary. However, while deletion of third positions did not markedly alter the relationships estimated, it also did not markedly increase bootstrap support for our MP trees.

#### 4.5. Effect of increasing taxa

There has been debate over whether it is better to add taxa or characters to an analysis to improve accuracy, given that resources are always finite. Rosenberg and Kumar (2001) suggested that longer sequences, rather than more taxa, will improve the accuracy of the phylogeny estimated. However, it was also argued that increasing the number of taxa equally reduces error in phylogenetic estimations (Pollock et al., 2002). The improvement in phylogenetic accuracy is in part determined by the length of sequences already obtained and by the levels of divergence between the taxa (Hillis et al., 2003). For example, if there are several long branches in the phylogeny, effort may be better expended on sequencing taxa that break up the long branches rather than adding more characters (Graybeal, 1998). In the microgastrine case, our simulations showed that neither adding taxa nor genetic data would increase bootstrap support for the short branches in the phylogeny.

#### 4.6. Phylogenetic results

We found strong support (100% of bootstrap replicates from the MP analysis of the seven genes, and posterior

probabilities of 0.99 for both the molecular data and the molecular data plus morphology) for monophyly of the microgastroid complex, *sensu* Wharton (1993), Whitfield and Mason (1994), Whitfield (1997a), and Downton and Austin (1998). Our finding of monophyly for Microgastrinae agrees with an earlier analysis of *16S* data that also found the microgastroid complex to be monophyletic, although with equivocal bootstrap support (Downton et al., 1998; Whitfield, 1997b). An analysis of portions of *16S* and *28S* rDNA also found strong bootstrap support for monophyly of the microgastroids (Downton and Austin, 1998).

Our Bayesian analysis of the combined molecular and morphological characters found a relationship for the brachonid subfamilies of (Cheloninae, (Mendesellinae, (Microgastrinae, (Cardiochilinae, Miracinae))). Belshaw et al. (1998) found a similar relationship for the microgastrine subfamilies, excluding Mendesellinae, from an analysis of a portion of the *28S* region. These results however, conflict with a MP analysis of portions of the *16S* and *28S* genes and 11 morphological characters (Downton and Austin, 1998), and a Bayesian analysis of portions of *16S* *18S* and *28S* regions and 96 morphological characters (Min et al., 2005), that found a relationship of (Adelinae + Cheloninae, (Miracinae, (Microgastrinae, Cardiochilinae))). We intend a more extensive examination of subfamily relationships within the microgastroid complex in the near future.

It is difficult to compare our estimate of relationships within Microgastrinae to other studies, as generally different or fewer microgastrine species were sampled in those studies (e.g., Belshaw et al., 1998; Downton et al., 1998). We found *Microplitis* and *Snellenius* represent an early diverging lineage of microgastrines. A phylogeny estimated from portions of *16S* and *28S* also found *Microplitis* to be basal (Downton and Austin, 1998) as did a phylogeny estimated from a portion of *28S* (Mardulyn and Whitfield, 1999).

## Acknowledgments

This study was primarily supported by National Science Foundation grant DEB 0316566 to J.B.W. It also includes work supported by two other grants to JBW: USDA NRI Grant 9501893 and NSF IBN 0344829. We wish to jointly thank those who contributed specimens for our analysis, especially Andy Austin, Martin Hauser, Mike Irwin, Dan Janzen, Angelica Pentead-Dias, and Mike Sharkey. We also wish to thank Andy Austin, Sydney Cameron, Bryan Danforth, Mark Downton, and Heather Hines for helpful discussion concerning the genes used here, and John Huelssenbeck, Jack Sullivan and Dave Swofford for suggestions concerning the simulations. Two anonymous reviewers contributed helpful comments.

## References

Ascher, J.S., Danforth, B.N., Ji, S., 2001. Phylogenetic utility of the major opsin in bees (Hymenoptera: Apoidea): a reassessment. *Mol. Phylogenet. Evol.* 19, 76–93.

- Barker, F.K., Lutzoni, F.M., 2002. The utility of the incongruence length difference test. *Syst. Biol.* 51, 625–637.
- Belshaw, R., Fitton, M., Herniou, H., Gimeno, C., Quicke, D.L.J., 1998. A phylogenetic reconstruction of the Ichneumonoidea (Hymenoptera) based on the D2 variable region of 28S ribosomal RNA. *Syst. Entomol.* 23, 109–123.
- Belshaw, R., Quicke, D.L.J., 1997. A molecular phylogeny of the Aphidiinae (Hymenoptera: Braconidae). *Mol. Phylogenet. Evol.* 7, 281–293.
- Brooks, D.R., McLennan, D.A., 2003. Extending phylogenetic studies of coevolution: secondary Brooks parsimony analysis, parasites, and the Great Apes. *Cladistics* 19, 104–119.
- Brower, A.V.Z., DeSalle, R., 1998. Patterns of mitochondrial versus nuclear DNA sequence divergence among nymphalid butterflies: the utility of wingless as a source of characters for phylogenetic inference. *Insect Mol. Biol.* 7, 73–82.
- Buckley, T.R., Cunningham, C.W., 2002. The effect of nucleotide substitution model assumptions on estimates of nonparametric bootstrap support. *Mol. Biol. Evol.* 19, 394–405.
- Cameron, S.A., 2003. Data from the elongation factor-1alpha gene corroborate the phylogenetic pattern from other genes, revealing common ancestry of bumble bees and stingless bees (Hymenoptera: Apinae). In: Vandame, R., Rabanales, M.C.M.R., Díaz, M.C.M.A.G., Conesa, I.B.T.J.G., Guillén, M.C.D.S., (Eds.), III. Seminario Mesoamericano sobre Abejas sin Aguijón. El Colegio de la Frontera Sur, Tapachula, Chiapas, México, pp. 132–135.
- Cameron, S.A., Mardulyn, P., 2001. Multiple molecular data sets suggest independent origins of highly eusocial behavior in bees (Hymenoptera: Apinae). *Syst. Biol.* 50, 194–214.
- Cameron, S.A., Mardulyn, P., 2003. The major opsin gene is useful for inferring higher level phylogenetic relationships of the corbiculate bees. *Mol. Phylogenet. Evol.* 28, 610–613.
- Cameron, S.A., Williams, P.H., 2003. Phylogeny of bumble bees in the New World subgenus *Fervidobombus* (Hymenoptera: Apidae): congruence of molecular and morphological data. *Mol. Phylogenet. Evol.* 28, 552–563.
- Cho, S., Mitchell, A., Regier, J.C., Mitter, C., Poole, R.W., Friedlander, T.P., Zhao, S., 1995. A highly conserved nuclear gene for low-level phylogenetics: elongation factor1-alpha recovers morphology-based tree for heliothine moths. *Mol. Biol. Evol.* 12, 650–656.
- Collin, R., 2003. The utility of morphological characters in gastropod phylogenetics: an example from the Calyptraeidae. *Biol. J. Linn. Soc.* 78, 541–593.
- Collins, T.M., Fedrigo, O., Naylor, G.J.P., 2005. Choosing the best genes for the job: the case for stationary genes in genome-scale phylogenies. *Syst. Biol.* 54, 493–500.
- Cunningham, C., 1997. Can three incongruence tests predict when data should be combined? *Mol. Biol. Evol.* 14, 733–740.
- Dabert, J., Dabert, M., Mironov, S.V., 2001. Phylogeny of feather mite subfamily Avenzoariinae (Acari: Analgoidea: Avenzoariidae) inferred from combined analysis of molecular and morphological data. *Mol. Phylogenet. Evol.* 20, 124–135.
- Danforth, B.N., Brady, S.G., Sipes, S.D., Pearson, A., 2004. Single-copy nuclear genes recover Cretaceous-age divergences in bees. *Syst. Biol.* 53, 309–326.
- Danforth, B.N., Ji, S., 1998. Elongation factor-1alpha occurs as two copies in bees: implications for phylogenetic analysis of EF-1alpha sequences in insects. *Mol. Biol. Evol.* 15, 225–235.
- Danforth, B.N., Lin, C.P., Fang, J., 2005. How do insect nuclear ribosomal genes compare to protein-coding genes in phylogenetic utility and nucleotide substitution patterns? *Syst. Entomol.* 30, 549–562.
- de Queiroz, A., Donoghue, M.J., Junhyong, K., 1995. Separate versus combined analysis of phylogenetic evidence. *Annu. Rev. Ecol. Syst.* 26, 657–681.
- Dolphin, K., Belshaw, R., Orme, C.D.L., Quicke, D.J., 2000. Noise and incongruence: interpreting results of the incongruence length difference test. *Mol. Phylogenet. Evol.* 71, 401–406.
- Donoghue, M.J., Sanderson, M.J., 1992. The suitability of molecular and morphological evidence in reconstructing plant phylogeny. In: Soltis,

- P.S., Soltis, D.E., Doyle, J.J. (Eds.), *Molecular Systematics of Plants*. Chapman Hall, New York, pp. 340–368.
- Dowton, M., Austin, A.D., 1994. Molecular phylogeny of the insect order Hymenoptera: Apocritan relationships. *Proc. Natl. Acad. Sci. USA* 91, 9911–9915.
- Dowton, M., Austin, A.D., 1998. Phylogenetic relationships among the microgastroid wasps (Hymenoptera: Braconidae): combined analysis of 16S and 28S rDNA genes and morphological data. *Mol. Phylogenet. Evol.* 10, 354–366.
- Dowton, M., Austin, A.D., Antolin, M.F., 1998. Evolutionary relationships among the Braconidae (Hymenoptera: Ichneumonoidea) inferred from partial 16S rDNA sequences. *Insect Mol. Biol.* 7, 129–150.
- Erixon, P., Svennblad, B., Britton, T., Oxelman, B., 2003. Reliability of bayesian posterior probabilities and bootstrap frequencies on phylogenetics. *Syst. Biol.* 52, 665–673.
- Farris, J.S., Källersjö, M., Kluge, A.G., Bult, C., 1994. Testing the significance of congruence. *Cladistics* 10, 315–320.
- Farris, J.S., Källersjö, M., Kluge, A.G., Bult, C., 1995. Constructing a significance test for incongruence. *Syst. Biol.* 44, 570–572.
- Felsenstein, J., 1978. Cases in which parsimony or compatibility methods will be positively misleading. *Syst. Zool.* 27, 401–410.
- Fishbein, M., Hibsich-Jetter, C., Soltis, D.E., Hufford, L., 2001. Phylogeny of Saxifrageles (Angiosperms, Eudicots): analysis of a rapid ancient radiation. *Syst. Biol.* 50, 817–847.
- Friedlander, T.P., Horst, K.R., Regier, J.C., Mitter, C., Peigler, R.S., Fang, Q.Q., 1998. Two nuclear genes yield concordant relationships within Attacini (Lepidoptera: Saturniidae). *Mol. Phylogenet. Evol.* 9, 131–140.
- Folmer, O., Black, M., Hoeh, W., Lutz, R., Vrijenhoek, R., 1994. DNA primers for amplification of mitochondrial cytochrome *c* oxidase subunit I from diverse metazoan invertebrates. *Mol. Mar. Biol. Biotechnol.* 3, 294–299.
- Graybeal, A., 1998. Is it better to add taxa or characters to a difficult phylogenetic problem? *Syst. Biol.* 47, 9–17.
- Grimaldi, D., 1999. The co-radiations of pollinating insects and angiosperms in the Cretaceous. *Ann. Mo. Bot. Gard.* 86, 373–406.
- Guan, Y., Zheng, B.J., He, Y.Q., Liu, X.L., Zhuang, Z.X., Cheung, C.L., Luo, S.W., Li, P.H., Zhang, L.J., Guan, Y.J., Butt, K.M., Wong, K.L., Chan, K.W., Lim, W., Shortridge, K.F., Yuen, K.Y., Peiris, J.S.M., Poon, L.L.M., 2003. Isolation and characterization of viruses related to the SARS coronavirus from animals in southern China. *Science* 302, 276–278.
- Hebert, P.D.N., Cywinska, A., Ball, S.L., deWaard, J.R., 2003a. Biological identification through DNA barcodes. *Proc. R. Soc. Lond. B* 270, 313–321.
- Hebert, P.D.N., Penton, E.H., Burns, J.M., Janzen, D.H., Hallwachs, W., 2004. Ten species in one: DNA barcoding reveals cryptic species in the neotropical skipper butterfly *Astraptes fulgerator*. *Proc. Natl. Acad. Sci. USA* 101, 14812–14817.
- Hebert, P.D.N., Ratnasingham, N.S., deWaard, J.R., 2003b. Barcoding animal life: cytochrome *c* oxidase subunit I divergences among closely related species. *Proc. R. Soc. Lond. B* 270, S96–S99.
- Hendy, M., Penny, D., 1989. A framework for the quantitative study of evolutionary trees. *Syst. Zool.* 38, 297–309.
- Hillis, D.M., Pollock, D.D., McGuire, J.A., Zwickl, D.J., 2003. Is sparse taxon sampling a problem for phylogenetic inference? *Syst. Biol.* 52, 124–126.
- Huelsenbeck, J.P., Rannala, B., 2004. Frequentist properties of bayesian posterior probabilities of phylogenetic trees under simple and complex substitution models. *Syst. Biol.* 53, 904–913.
- Huelsenbeck, J.P., Ronquist, F., 2001. MR BAYES: Bayesian inference of phylogeny. *Bioinformatics* 17, 754–755.
- Kawakita, A., Sota, T., Ascher, J.S., Ito, M., Tanaka, H., Kato, M., 2003. Evolution and phylogenetic utility of alignment gaps within intron sequences of three nuclear genes in bumble bees (*Bombus*). *Mol. Biol. Evol.* 20, 87–92.
- Korber, B., Muldoon, M., Theiler, J., Gao, F., Gupta, R., Lapedes, A., Hahn, B.H., Wolinsky, S., Bhattacharya, T., 2000. Timing the ancestor of the HIV-1 pandemic strain. *Science* 288, 1789–1796.
- Leys, R., Cooper, S.J.B., Schwartz, M.P., 2002. Molecular phylogeny and historical biogeography of the large carpenter bees, genus *Xylocopa* (Hymenoptera: Apidae). *Biol. J. Linn. Soc.* 77, 249–266.
- Lockhart, P.J., Steel, M.A., Hendy, M.D., Penny, D., 1994. Recovering evolutionary trees under a more realistic model of sequence evolution. *Mol. Biol. Evol.* 11, 605–612.
- Mardulyn, P., Cameron, S.A., 1999. The major opsin in bees (Insecta: Hymenoptera): A promising nuclear gene for higher level phylogenetics. *Mol. Phylogenet. Evol.* 12, 168–176.
- Mardulyn, P., Whitfield, J.B., 1999. Phylogenetic signal in COI, 16S, and 28S genes for inferring relationships among genera of Microgastrinae (Hymenoptera: Braconidae): evidence of a high diversification rate in this group of parasitoids. *Mol. Phylogenet. Evol.* 12, 282–294.
- Marvaldi, A.E., Sequeira, A.S., O'Brien, C.W., Farrell, B.D., 2002. Molecular and morphological phylogenetics of weevils (Coleoptera, Curculionoidea): do niche shifts accompany diversification? *Syst. Biol.* 51, 761–785.
- Michel-Salzat, A., Cameron, S.A., Oliveira, M.L., 2004. Phylogeny of the orchid bees (Hymenoptera: Apinae: Euglossini): DNA and morphology yield equivalent patterns. *Mol. Phylogenet. Evol.* 32, 309–323.
- Michel-Salzat, A., Whitfield, J.B., 2004. Preliminary evolutionary relationships within the parasitoid wasp genus *Cotesia* (Hymenoptera: Braconidae: Microgastrinae): combined analysis of four genes. *Syst. Entomol.* 29, 1–12.
- Min, S., Xue-xin, C., van Achterberg, C., 2005. Phylogenetic relationships among the Braconidae (Hymenoptera: Ichneumonoidea) inferred from partial 16S rDNA, 28S rDNA D2, 18S rDNA gene sequences and morphological characters. *Mol. Phylogenet. Evol.* 37, 104–116.
- Mitchell, A., Cho, S., Regier, J.C., Mitter, C., Poole, R.W., Mathews, M., 1997. Phylogenetic utility of elongation factor-1alpha in Noctuoidea (Insecta: Lepidoptera): the limits of synonymous substitution. *Mol. Biol. Evol.* 14, 381–390.
- Mitchell, A., Mitter, C., Regier, J.C., 2000. More taxa or more characters revisited: combining data from nuclear protein-encoding genes for phylogenetic analyses of Noctuoidea (Insecta: Lepidoptera). *Syst. Biol.* 49, 202–224.
- Mitchell, A., Mitter, C., Regier, J.C., 2006. Systematics and evolution of the cutworm moths (Lepidoptera: Noctuidae): evidence from two protein-coding nuclear genes. *Syst. Entomol.* 31, 21–46.
- Page, R.D.M., 1995. TreeMap, version 1.0b.
- Pollock, D.D., Zwickl, D.J., McGuire, J.A., Hillis, D.M., 2002. Increased taxon sampling is advantageous for phylogenetic inference. *Syst. Biol.* 51, 664–671.
- Posada, D., 2000. Testing Models of Evolution—Modeltest Version 3.06, version 3.06. Department of Zoology, Brigham Young University.
- Posada, D., Crandall, K.A., 1998. Modeltest: testing the model of DNA substitution. *Bioinformatics* 14, 817–818.
- Rambaut, A., Grassly, N., 1997. Seq-Gen: an application for the Monte Carlo simulation of DNA sequence evolution along phylogenetic trees. *Comput. Appl. Biosci.* 13, 235–238.
- Rambaut, A., Robertson, D.L., Pybus, O.G., Peeters, M., Holmes, E.C., 2001. Phylogeny and the origin of HIV-1. *Nature*, 1047–1048.
- Rannala, B., Yang, Z., 1996. Probability distribution of molecular evolutionary trees: a new method of phylogenetic inference. *J. Mol. Evol.* 43, 304–311.
- Rodríguez, F., Oliver, J.F., Marin, A., Medina, J.R., 1990. The general stochastic model of nucleotide substitution. *J. Theor. Biol.* 142, 485–501.
- Rokas, A., Williams, B.L., King, N., Carroll, S.B., 2003. Genome-scale approaches to resolving incongruence in molecular phylogenies. *Nature* 425, 798–804.
- Ronquist, F., Huelsenbeck, J.P., 2003. MrBayes 3: Bayesian phylogenetic inference under mixed models. *Bioinformatics* 19, 1572–1574.
- Rosenberg, M.S., Kumar, S., 2001. Incomplete taxon sampling is not a problem for phylogenetic inference. *Proc. Natl. Acad. Sci. USA* 98, 10751–10756.
- Sanchis, A., Michelena, J.M., Latorre, A., Quicke, D.L.J., Gardenfors, U., Belshaw, R., 2001. The phylogenetic analysis of variable-length sequence data: elongation factor-1alpha introns in European popula-

- tions of the parasitoid wasp genus *Pauesia* (Hymenoptera: Braconidae: Aphidiinae). *Mol. Biol. Evol.* 18, 1117–1131.
- SPSS. 1998. *Systat 9.01 Statistics*. SPSS Inc.
- Sullivan, J., 1996. Combining data with different distributions of among-site variation. *Syst. Biol.* 45, 375–380.
- Swofford, D.L., Olsen, G., Waddell, P., Hillis, D., 1996. Phylogenetic inference. In: Hillis, D., Moritz, C., Mable, B. (Eds.), *Molecular Systematics*. Sinauer Associates, Inc., Sunderland, pp. 407–514.
- Swofford, D. L. 2002. PAUP\* Phylogenetic analysis using parsimony (\*and other methods), version 4. Sinauer and Associates.
- Tavaré, L., 1986. Some probabilistic and statistical problems on the analysis of DNA sequences. *Lect. Math. Life Sci.* 17, 57–86.
- Thompson, J.D., Gibson, T.J., Plewniak, F., Jeanmougin, F., Higgins, D.G., 1997. The Clustal X windows interface: flexible strategies for multiple sequence alignment aided by quality analysis tools. *Nucleic Acids Research* 24, 4876–4882.
- Weiblen, G.D., 2004. Correlated evolution in fig pollination. *Syst. Biol.* 53, 128–139.
- Wharton, R.A., 1993. Bionomics of the Braconidae. *Annual Reviews in Entomology* 38, 121–143.
- Whitfield, J.B., 1997a. Molecular and morphological data suggest a single origin of the polydnviruses among braconid wasps. *Naturwissenschaften* 84, 502–507.
- Whitfield, J.B., 1997b. Subfamily Microgastrinae. In: Wharton, R.A., Marsh, P.M., Sharkey, M.J. (Eds.), *Identification Manual to the New World Genera of the Family Braconidae (Hymenoptera)*. International Society of Hymenopterists Special Publication 1, Washington, DC, pp. 333–364.
- Whitfield, J.B., 2002. Estimating the age of the polydnvirus/braconid wasp symbiosis. *Proc. Natl. Acad. Sci. USA* 99, 7508–7513.
- Whitfield, J.B., Asgari, S., 2003. Virus or not? Phylogenetics of polydnviruses and their wasp carriers. *J. Insect Physiol.* 49, 397–405.
- Whitfield, J.B., Cameron, S.A., 1998. Hierarchical analysis of variation in the 16S rRNA gene among Hymenoptera. *Mol. Biol. Evol.* 15, 1728–1743.
- Whitfield, J.B., Mardulyn, P., Austin, A.D., Dowton, M., 2002. Phylogenetic relationships among microgastrine braconid wasp genera based on data from the 16S, COI and 28S genes and morphology. *Syst. Entomol.* 27, 337–359.
- Whitfield, J.B., Mason, W.R.M., 1994. Mendesellinae, a new subfamily of braconid wasps (Hymenoptera, Braconidae) with a review of relationships within the microgastroid assemblage. *Syst. Entomol.* 19, 61–76.
- Wiegmann, B.M., Mitter, C., Regier, J.C., Friedlander, T.P., Wagner, D.L., Nielsen, E.S., 2000. Nuclear genes resolve Mesozoic-aged divergences in the insect order Lepidoptera. *Mol. Phylogenet. Evol.* 15, 242–259.
- Wiegmann, B.M., Yeates, D.K., Thorne, J.L., Kishino, H., 2003. Time flies, a new molecular time scale for brachyceran fly evolution without a clock. *Syst. Biol.* 52, 745–756.
- Worobey, M., Santiago, M.L., Keele, B.F., Ndjango, J.-B.N., Joy, J.B., Labama, B.L., Dheda, B.D., Rambaut, A., Sharp, P.M., Shaw, G.M., Hahn, B.H., 2004. Contaminated polio vaccine theory refuted. *Nature* 428, 820.
- Yang, Z., Goldman, N., Friday, A., 1994. Comparison of models for nucleotide substitution used in maximum-likelihood phylogenetic estimation. *Mol. Biol. Evol.* 11, 316–324.
- Yoder, A.D., Irwin, J.A., Payseur, B.A., 2001. Failure of the ILD to determine data combinability for slow loris phylogeny. *Syst. Biol.*, 50.