



Since January 2020 Elsevier has created a COVID-19 resource centre with free information in English and Mandarin on the novel coronavirus COVID-19. The COVID-19 resource centre is hosted on Elsevier Connect, the company's public news and information website.

Elsevier hereby grants permission to make all its COVID-19-related research that is available on the COVID-19 resource centre - including this research content - immediately available in PubMed Central and other publicly funded repositories, such as the WHO COVID database with rights for unrestricted research re-use and analyses in any form or by any means with acknowledgement of the original source. These permissions are granted for free by Elsevier for as long as the COVID-19 resource centre remains active.

## Intracellular Processing of the Porcine Coronavirus Transmissible Gastroenteritis Virus Spike Protein Expressed by Recombinant Vaccinia Virus

DAVID J. PULFORD<sup>1</sup> AND PAUL BRITTON<sup>2</sup>

*Division of Molecular Biology, A.F.R.C., Institute for Animal Health, Compton Laboratory, Compton, Newbury, Berkshire, RG16 0NN, United Kingdom*

*Received December 18, 1990; accepted February 20, 1991*

The Spike (S) protein from a virulent British field isolate of porcine transmissible gastroenteritis virus (TGEV) FS772/70 was constructed from cDNA and inserted into the vaccinia virus (VV) thymidine kinase gene locus under the control of the VV early/late gene P<sub>7.5k</sub> promoter. Recombinant S protein was synthesized as an endo- $\beta$ -N-acetylglucosaminidase H (Endo H)-sensitive glycoprotein with high mannose simple oligosaccharides (gp190) that underwent post-translational modification to an Endo H-resistant glycoprotein with complex oligosaccharides (gp210). Immunofluorescence analysis demonstrated that the majority of recombinant S protein was retained at the Golgi but some S protein was expressed on the plasma membrane. Monoclonal antibodies (mAbs) raised against native S protein reacted with this recombinant S protein; also, mice infected with the recombinant vaccinia virus (rVV) expressing the S protein induced TGEV neutralizing antibodies. A truncated S protein (S $\Delta$ ) was also expressed in rVV-infected cells by introducing a deletion into the S protein cDNA that removed 292 amino acids from the C-terminus. The S $\Delta$  protein (gp170) was shown to be antigenically similar to TGEV S protein by immunofluorescence and immunoprecipitation tests but was retained in the endoplasmic reticulum and not expressed on the cell surface. © 1991 Academic Press, Inc.

### INTRODUCTION

Transmissible gastroenteritis virus (TGEV) belongs to the family *Coronaviridae*, a large group of enveloped viruses with a positive-stranded RNA genome. The virus causes gastroenteritis in neonatal pigs, resulting in a high mortality and morbidity. TGEV virions are composed of three structural proteins; a basic phosphorylated nucleoprotein (N) *M*<sub>r</sub> 47,000 was shown to associate with the viral genomic RNA to form the nucleocapsid and interact with a glycosylated membrane protein (M) observed as a series of polypeptides *M*<sub>r</sub> 28–31,000, and the peplomer or spike (S), a surface *M*<sub>r</sub> 200,000 glycoprotein (Garwes and Pocock, 1975). The TGEV S protein has been shown to elicit a neutralizing antibody response (Laude *et al.*, 1986; Jimenez *et al.*, 1986; Garwes *et al.*, 1987) capable of conferring some protection to suckling pigs (Garwes *et al.*, 1978/79). By analogy to the S protein of mouse hepatitis virus (MHV), the TGEV S protein may possess the cell receptor binding components (Collins *et al.*, 1982) and virulence determinants of the virus (Fleming *et al.*, 1986). The S protein of TGEV and coronaviruses antigenically related to TGEV such as feline infectious peritonitis

virus (FIPV), canine coronavirus, and porcine respiratory coronavirus, are not cleaved (for a review see Spaan *et al.*, 1988). However, the S proteins from MHV, infectious bronchitis virus, bovine coronavirus, human coronavirus (OC43 and 229E), and porcine hemagglutinating encephalomyelitis virus which are not antigenically related to TGEV are proteolytically cleaved into two subunits (Spaan *et al.*, 1988). Some coronavirus S proteins have been demonstrated to induce cell fusion (Collins *et al.*, 1982; Sturman *et al.*, 1985; de Groot *et al.*, 1989), generating multinucleated syncytia.

The complete amino acid sequences for the S proteins of the virulent FS772/70 strain (Britton and Page, 1990) and the avirulent Purdue strain (Jacobs *et al.*, 1987; Rasschaert and Laude, 1987) have been published and compared with other coronaviruses. The FS772/70 strain S protein has a 1449-amino acid precursor polypeptide with 33 potential N-linked glycosylation sites and 97% sequence homology at the nucleotide and the amino acid level with the Purdue strain. From the deduced amino acid sequence the coronavirus S protein was shown to contain characteristic features: a 16-amino acid cleavable secretory signal; a heptad repeat sequence that forms  $\alpha$ -helical structures which may interact with other subunits to form a coiled-coil oligomeric structure (de Groot *et al.*, 1987); a hydrophobic sequence near the C-terminus that is probably responsible for anchoring the S protein to the virion envelope. This membrane anchor region is imme-

<sup>1</sup> Present address: Department of Pathology and Microbiology, School of Medical Sciences, University of Bristol, University Walk, Bristol, BS8 1TD, UK.

<sup>2</sup> To whom all correspondence and reprint requests should be addressed.

diately followed by a cysteine-rich domain, a feature common to all other coronaviruses, that may stabilize protein-lipid interactions.

In this paper we report the construction of a FS772/70 cDNA S gene and its expression by a recombinant vaccinia virus (rVV) to study the antigenicity and cellular localization of the S protein. The role of the membrane anchor domain was investigated by the introduction of a C-terminal gene deletion downstream of the heptad repeat sequence.

## MATERIALS AND METHODS

### Cells and viruses

TGEV, strain FS772/70, was cultivated in a porcine continuous cell line (LLC-PK1) maintained with medium containing  $10 \mu\text{g ml}^{-1}$  trypsin (Hofmann and Wyler, 1988). CV-1 and human 143 thymidine kinase negative (HTK<sup>-</sup>) cells were grown in Eagles MEM medium (Flow Labs) containing 10% heat-inactivated fetal calf serum. Transfections were performed on subconfluent monolayers of CV-1 cells previously infected with wild-type vaccinia virus (VV) (WR strain) using plasmid DNA calcium phosphate precipitates (Mackett *et al.*, 1985). Recombinant vaccinia viruses were cultivated in HTK<sup>-</sup> cells in the presence of  $25 \mu\text{g ml}^{-1}$  5-bromodeoxyuridine (BUdR; Sigma) as described by Mackett *et al.* (1985).

### Construction of the TGEV S and S $\Delta$ genes from cDNA

Cloning procedures were as described by Maniatis *et al.* (1982). Enzymes were used according to manufacturers' instructions (New England Biolabs, Bethesda Research Labs). Plasmids pTG47, pTG25, and pTG30 (Britton and Page, 1990) were used to reconstruct a DNA copy of the TGEV S gene; the procedure is outlined in Fig. 1. Essentially *Bam*HI linkers (pCGGATCCG, No. 1021 Biolabs) were added to the *Hpa*I site known to be 11 bp upstream of the S gene initiation codon (Britton and Page, 1990), and the 1.29-kb *Hind*III fragment was cloned into pUC9 and excised as a 0.85-kb *Xba*I-*Bam*HI fragment. The *Bam*HI-*Sty*I fragment derived from pTG47, the *Sty*I-*Kpn*I fragment derived from pTG25, the *Kpn*I-*Xba*I fragment derived from pTG30, the 0.85-kb *Xba*I-*Bam*HI fragment, and *Bam*HI dephosphorylated pBR322 were mixed, ligated in a five-way reaction mixture, and transformed into DH1 *Escherichia coli* cells. As a result of the different cohesive ends an insert of 4.6 kb would correspond only to the complete S gene. An Ap<sup>R</sup>Tc<sup>S</sup> transformant was found to contain a plasmid, pPBP1, with a 4.6-kbp insert in pBR322, corresponding to the TGEV S *Bam*HI

gene cassette. The reconstructed gene was verified by sequencing the junction regions. The TGEV cDNA S gene was subcloned from pPBP1 and inserted into the *Bam*HI cloning site of the VV plasmid insertion vector pGS20 (Mackett *et al.*, 1984), downstream of the VV early/late P<sub>7.5K</sub> promoter. The recombinant plasmid, pGSP-1, containing a correctly orientated S gene, was identified by restriction endonuclease digestion with *Sa*I.

The S protein with a C-terminal deletion was generated by cloning a 3.7-kbp *Sa*I fragment from pGSP-1 into the *Sa*I site of pUC12. Restriction endonuclease digestion of recombinant plasmids produced either a 0.25- or 3.45-kbp *Bam*HI fragment and the latter was recloned back into *Bam*HI-digested pGS20. The recombinant plasmid insertion vector pGSP $\Delta$ -38 was found to contain a correctly orientated S $\Delta$  gene by *Sty*I restriction endonuclease digestion of plasmid DNA. A synthetic oligonucleotide primer 5'-GTGTGCGGCTACTATACTA-3', that binds to the complementary DNA strand 43 bp downstream of the *Bam*HI cloning site in pGS20, verified the position of the S $\Delta$  protein stop codon in pGSP $\Delta$ -38 by sequencing (Fig. 2A).

### Construction of recombinant viruses

The rVVs, vTS-1 and vTS $\Delta$ -1, were generated with pGSP-1 and pGSP $\Delta$ -38 using methods described by Mackett *et al.* (1984). Thymidine kinase negative viruses were screened by DNA dot blot and DNA from vTS-1 and vTS $\Delta$ -1 infected cells was analyzed by Southern blot using a [<sup>32</sup>P]-labeled S gene cDNA probe as described in Pulford and Britton (1990).

### Animal inoculations

Groups of three female Balb/C mice were immunized by intraperitoneal (ip) inoculation with  $1-2 \times 10^5$  PFU/mouse of partially purified recombinant or wildtype VV as described by Pulford and Britton (1990). After 4 weeks, one animal from each group was sacrificed to obtain convalescent serum, the remaining animals were hyperimmunized with homologous virus by ip inoculation and bled after a further 4 weeks. Mice initially inoculated with either phosphate-buffered saline (PBS) or WR strain VV were inoculated after 4 weeks with a dose of vTS-1 to establish if age or a previous VV infection affected the stimulation of TGEV neutralizing antibody. TGEV neutralizing antibody was assessed by plaque reduction assay as described by Garwes *et al.* (1987).

### Radiolabeling of viral proteins

Viral proteins were routinely radiolabeled by incubating TGEV-infected LLC-PK1 cells or rVV-infected HTK<sup>-</sup>

cells, at 8 hr p.i. or 17 hr p.i., respectively, in methionine-free medium for 1 hr and then in the presence of 50–100  $\mu\text{Ci ml}^{-1}$  L-[ $^{35}\text{S}$ ]methionine (Amersham International; see figure legends for further details). After pulse labeling, cells were washed in PBS (10 mM potassium phosphate, 150 mM NaCl, pH 7.2) and chased in medium supplemented with 2 mM L-methionine. Cells were washed in PBS before treating with TEST lysis buffer (20 mM Tris-HCl, pH 7.6, 2 mM EDTA, 100 mM NaCl, 1% Triton X-100, 0.1% aprotinin).

### Radioimmunoprecipitation

Nuclei and cell debris were pelleted from infected cell lysates by centrifugation at 100,000  $g$  using a Beckman TLA-100 ultracentrifuge. Tissue culture medium was clarified by low speed centrifugation. Immunoprecipitations were performed by mixing 1 vol of cell lysate with 1/100th vol of porcine TGEV hyperimmune antiserum at 4° for 1 hr and the resulting immune complexes were incubated overnight with formalin-fixed *Staphylococcus aureus* cells (SAC; BRL) previously washed three times in TEST buffer. Immune complexes were washed three times with TEST buffer and resuspended in Laemmli sample buffer, and proteins separated on 6% SDS-polyacrylamide gels (Laemmli *et al.*, 1970).  $^{14}\text{C}$ -methylated proteins (Amersham, code CFA.626) were routinely used as molecular weight markers. Proteins were detected by fluorography after immersing gels in 0.8 M sodium salicylate for 30 min.

### Endoglycosidase H analysis

Pelleted immune complexes were washed as described above, resuspended in 40  $\mu\text{l}$  50 mM Tris-HCl, pH 6.8, containing 0.25% SDS, and boiled for 2 min. The solubilized proteins were incubated in the presence or absence of 1 mU Endo H (Boehringer-Mannheim) in 90 mM sodium citrate, pH 5.5, at 37° for 18 hr. The proteins were analyzed on 6% polyacrylamide gels and detected by fluorography.

### Indirect immunofluorescence

Glass coverslips with subconfluent monolayer cultures of HTK<sup>-</sup> or LLC-PK1 cells were infected with TGEV and wild-type or rVVs. At 20 hr p.i. cells were either fixed with cold 80% acetone and air dried or washed in cold PBS and maintained at 4° for surface staining. Cells were incubated for 1 hr with porcine TGEV hyperimmune antiserum diluted 1:100 in PBS and then extensively washed with PBS. Cells were then incubated for 30 min with fluorescein isothiocyanate-conjugated rabbit anti-pig immunoglobulin G (Nor-

dic Immunology) diluted 1:40 in PBS. Coverslips were washed, air dried, and mounted on glass slides with 80% glycerol. Fluorescent cells were observed and photographed with a Leitz Wetzlar UV microscope.

## RESULTS

### Construction of S and $\Delta$ cDNA genes

A 4.6-kbp *Bam*HI S gene cassette was constructed from TGEV FS772/70 cDNA and used to generate pPBP1 (Fig. 1). The 4350-bp S gene was capable of encoding a precursor polypeptide of 1449 amino acids with a  $M_r$  159,811. After cleavage of the N-terminal signal peptide, shown to be absent in virion-associated Purdue strain S protein (Rasschaert and Laude, 1987), the protein would consist of 1433 amino acid residues with a  $M_r$  157,891. The S gene *Bam*HI gene cassette was subcloned into the VV insertion vector pGS20 to give pGSP-1 as described under Materials and Methods. The  $\Delta$  gene, contained in pGSP $\Delta$ -38, was 3474 bp long, capable of encoding a 1157-amino acid polypeptide, corresponding to a deletion of 292 residues from the complete S protein and also included eight amino acid residues derived from the pUC12 polylinker and pGS20 sequences. The  $\Delta$  gene terminated in a new TGA stop codon contained within the VV TK sequences (Fig. 2). The predicted size of the precursor  $\Delta$  polypeptide was  $M_r$  126,748, which when modified by the removal of the 16-amino acid N-terminal signal peptide was reduced to  $M_r$  124,916. The C-terminal deletion also resulted in removal of eight potential N-linked glycosylation sites predicted for the S protein. The S gene initiation codon was 54 bp away from the VV early promoter RNA start site for both pGSP-1 and pGSP $\Delta$ -38 insertion vectors. The TGEV S genes were inserted into the VV genome by homologous recombination into the TK locus, and Southern blot analysis was used to confirm that the resulting rVVs vTS-1 and vTS $\Delta$ -1 contained the 4.6- and 3.45-kbp TGEV *Bam*HI gene fragment, respectively.

### Animal inoculations with vTS

Two plaque-purified rVV clones, vTS-1 and vTS-2, were used to immunize Balb/C mice, and the level of TGEV neutralizing antibodies was measured by a plaque reduction assay (Table 1). Both recombinant virus clones induced TGEV neutralizing antibodies that were boosted with a second inoculation. Mice previously inoculated with the wild-type VV and inoculated with vTS-1 produced a 22-fold lower level of TGEV neutralizing antibody compared to the convalescent serum of vTS-1. A primary infection with wild-type VV could have stimulated the mouse immune system

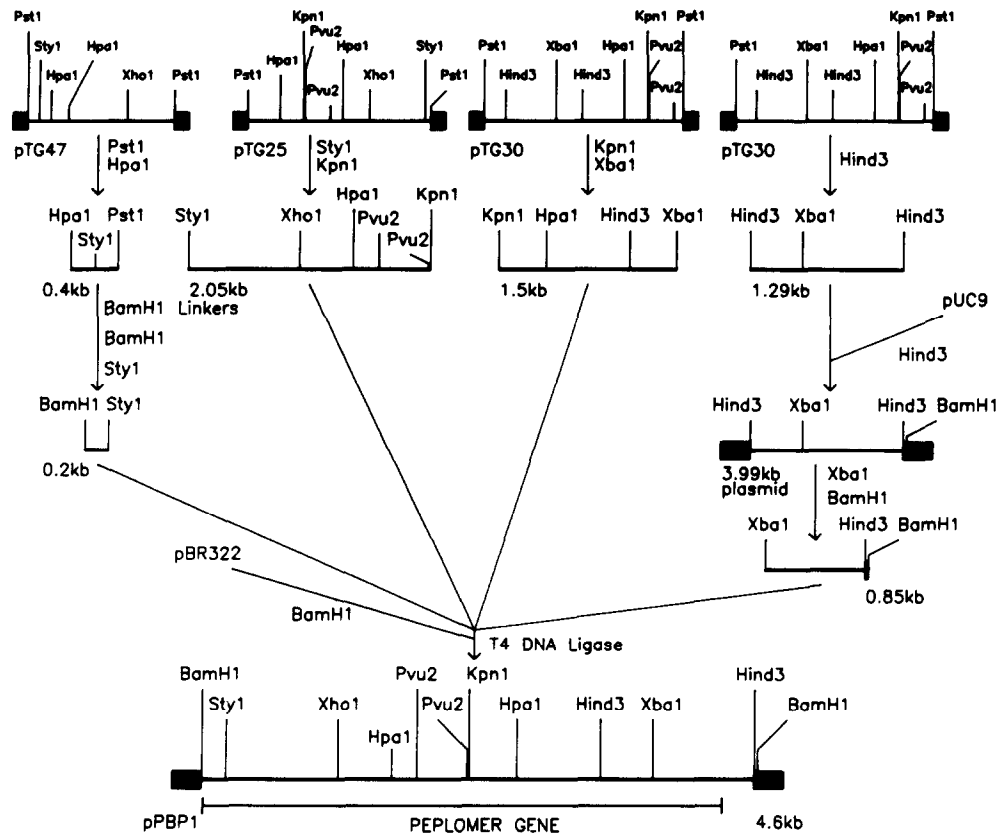


Fig. 1. Construction of the TGEV S gene from the FS772/70 cDNA. The complete TGEV S gene was generated by a four-way ligation into pBR322. The thin lines represent TGEV cDNA and the thick lines vector DNA sequence. The top line represents the three cDNA clones used to generate specific cDNA fragments. If more than one enzyme was used they are listed in a descending order next to the appropriate arrow. The 0.4-kb *HpaI*-*PstI* fragment from pTG47 had *BamHI* linkers added and was then digested with *BamHI* and *StyI* to generate a 0.2-kb fragment with a *BamHI* site upstream of the S gene initiation codon. The 1.29-kb *HindIII*-*HindIII* fragment from pTG30 was initially cloned into pUC9 and removed as a *XbaI*-*BamHI* fragment, with the *BamHI* site derived from the pUC9 polylinker sequence, to provide a *BamHI* site within the TGEV ORF-3a gene 3' to the end of the S gene. The relevant fragments were then ligated together with pBR322 such that only the correct alignment of the cohesive ends would give a fragment of 4.6 kb in pBR322 corresponding to the TGEV S gene *BamHI* cassette.

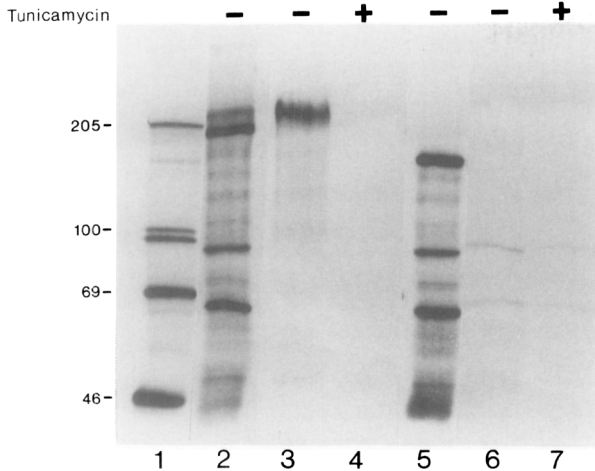
into producing a rapid clearance of a subsequent rVV infection and prevented the expression of large amounts of S protein. Mice given a single inoculation with vTS-1 4 weeks after the other mouse group had a fourfold reduction in the level of TGEV neutralizing antibody. This suggested that age may have a significant effect on the induction of TGEV neutralizing antibodies, but further animal studies are needed to make any firm conclusions.

#### Expression of the recombinant spike antigens

TGEV gene products synthesized by vTS-1 and vTS $\Delta$ -1 were analyzed by pulse labeling rVV-infected HTK<sup>-</sup> cells with L-[<sup>35</sup>S]methionine in the presence or absence of 10  $\mu$ g ml<sup>-1</sup> tunicamycin for 6 hr. TGEV S protein was immunoprecipitated from cell lysates or tissue culture fluids using porcine TGEV hyperimmune antiserum. This resulted in S polypeptides of  $M_r$

190,000 (gp190) and  $M_r$  210,000 (gp210) being immunoprecipitated from vTS-1-infected cell lysates in the absence of tunicamycin (Fig. 3, lane 2), while in the presence of tunicamycin, a  $M_r$  160,000 (p160) precursor S polypeptide was synthesized (Fig. 3, lane 3). Cells infected with vTS $\Delta$ -1 expressed a  $M_r$  170,000 glycosylated polypeptide (gp170) only (Fig. 3, lane 4) that was expressed as a  $M_r$  130,000 (p130) precursor protein (Fig. 3, lane 5) in the presence of tunicamycin. It was noted that the levels of S protein expressed were appreciably less in the presence of tunicamycin (Fig. 3). Comparison of the nonspecifically precipitated proteins in the presence or absence of tunicamycin (Fig. 3) indicated that the reduction in S protein synthesis was not due to inhibition of viral replication in the presence of tunicamycin. These observations suggested therefore that either glycosylation was required for efficient synthesis of the S protein or the majority of the anti-S antibodies were directed against the glycosylated form





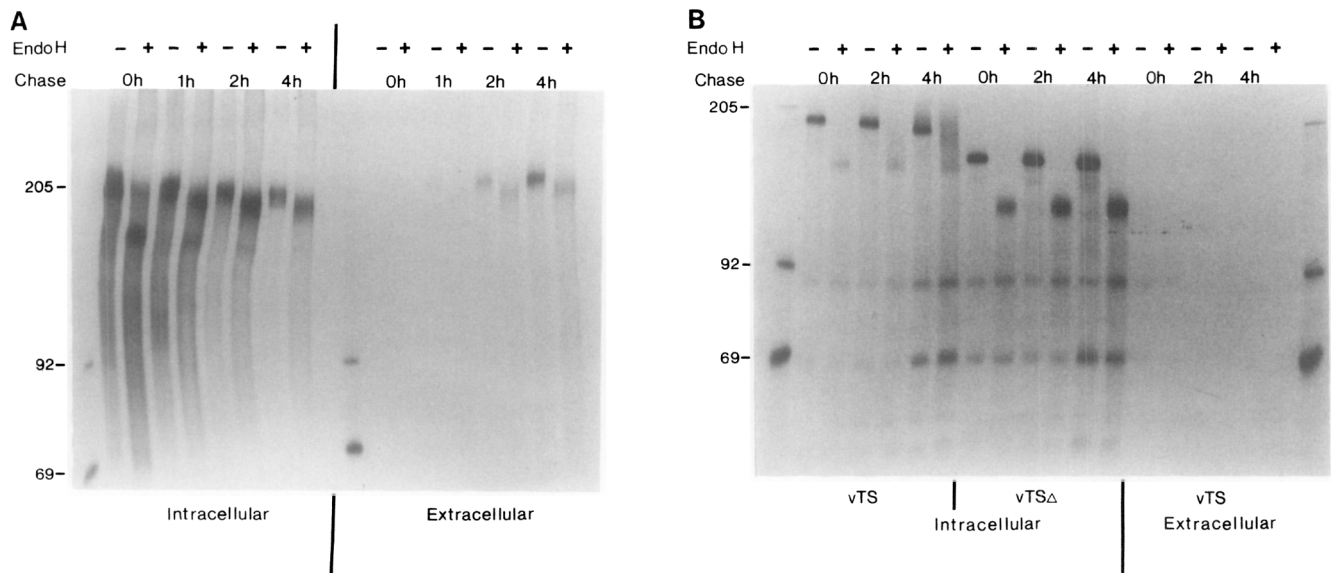
**FIG. 4.** The effect of glycosylation and the deletion of the membrane anchor domain upon the export of S protein into cell culture medium. HTK<sup>-</sup> cells were infected with 5 PFU/cell of vTS-1 (lane 2, 3, and 4) or vTSΔ-1 (lane 5, 6, and 7). At 17 hr p.i., infected cells were pulsed for 6 hr with 50  $\mu\text{Ci ml}^{-1}$  L-[<sup>35</sup>S]methionine in the presence or absence of 10  $\mu\text{g ml}^{-1}$  tunicamycin. Proteins from cell culture medium (lanes 3, 4, 6, and 7) or cell lysates (lanes 2 and 5) were immunoprecipitated and analyzed as described under Materials and Methods.

time. Digestion of gp210 from extracellular or intracellular sources with Endo H reduced the size of the S protein to  $M_r$  205,000. This observation has also been made for the FIPV S protein from FIPV-infected feline cells (Vennema *et al.*, 1990) and suggested that coronavirus S proteins still have high mannose or hybrid oligosaccharide structures following Golgi processing.

The recombinant S protein was completely Endo H sensitive after a 1-hr pulse and after chasing became partially Endo H resistant with approximately half of the protein observed as unresolved components of high molecular weight (Fig. 5B). Extracellular S protein was not detected in the culture medium after chasing for 4 hr because S protein transport from the RER through the Golgi stack and out of the cell was significantly disrupted in the absence of coronaviral morphogenesis. Infection of LLC-PK1 cells with vTS-1 produced a discrete  $M_r$  210,000 Endo H-resistant form of S protein (data not shown). This was in contrast to the partial Endo H-resistant forms observed in vTS-1-infected HTK<sup>-</sup> cells, implying that the TGEV S protein may be post-translationally modified to a different extent depending on the origin of the cell line. The SΔ protein remained completely Endo H sensitive, even after a 4-hr chase, demonstrating that the truncated S protein was glycosylated with high mannose oligosaccharides only and was not subject to Golgi-specific modifications (Fig. 5B).

#### Cellular location of recombinant S proteins

The cellular location of the S and SΔ protein in rVV-infected cells was analyzed by indirect immunofluorescence microscopy (Fig. 6). Acetone-fixed TGEV-infected LLC-PK1 cells, probed with anti-S-specific serum, had a granular appearance with occasional bright accumulations in localized parts of the cell (data not shown). In vTS-1-infected HTK<sup>-</sup> (Fig. 6A) and LLC-PK1 (Fig. 6C) cells the S protein was concentrated into



**FIG. 5.** The acquisition of S protein Endo H resistance. TGEV-infected LLC-PK1 cells at 8 hr p.i. (A) or vTS-1- and vTSΔ-1-infected HTK<sup>-</sup> cells at 17 hr p.i. (B) were pulse labeled with 100  $\mu\text{Ci ml}^{-1}$  L-[<sup>35</sup>S]methionine for 1 hr and chased for the times indicated. Immunoprecipitated proteins were incubated at 37° with or without Endo H for 16 hr and analyzed as described under Materials and Methods.

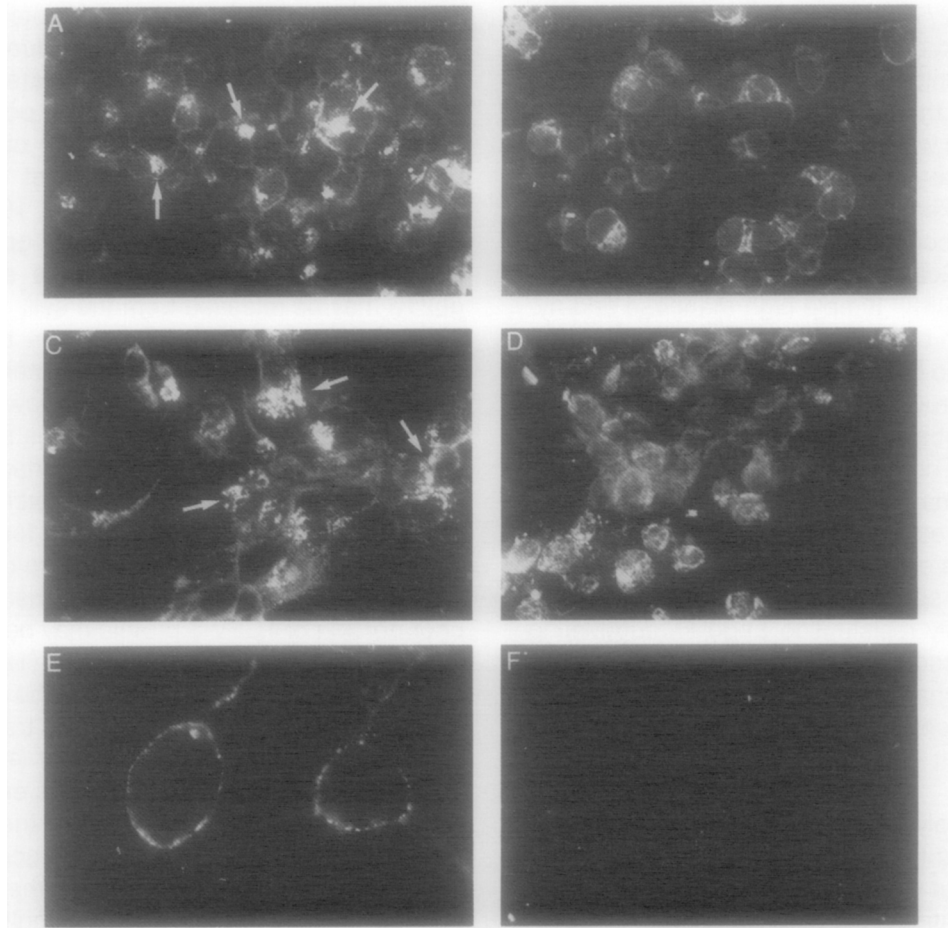


FIG. 6. Intracellular and cell surface expression of recombinant S and S $\Delta$  proteins in human and porcine cell lines. HTK<sup>-</sup> cells (A, B, E, and F) or LLC-PK1 cells (C and D) were infected with vTS-1 (A, C, and E) or vTS $\Delta$ -1 (B, D, and F). At 20 hr p.i., cells were processed as described under Materials and Methods and observed at  $\times 400$  magnification for intracellular immunofluorescence (A, B, C, and D) or at  $\times 1000$  magnification for cell surface immunofluorescence (E and F). The intracellular compartmental accumulation of recombinant S protein is highlighted with arrows.

an intracellular compartment in all infected cells (represented with arrows), while vTS $\Delta$ -1-infected cells had a uniform distribution of S $\Delta$  protein throughout the cytoplasm (Fig. 6B and 6D). Recombinant S protein was also observed on the cell surface of unfixed infected HTK<sup>-</sup> cells (Fig. 6E), unlike S $\Delta$  protein (Fig. 6F), demonstrating that the full-length protein has all the intrinsic properties for cell surface transport and does not require the cooperative effect of other TGEV proteins. The possibility that soluble S protein released from human cells may bind back to cell surface receptors and give the appearance of cell surface fluorescence can be disregarded as TGEV S protein only binds porcine cell surface receptors.

## DISCUSSION

Studies described in this paper with TGEV recombinant S protein have shown that it is an N-linked glyco-

protein with a  $M_r$  190–210,000. Mice inoculated with two separate clones of vTS demonstrated that the recombinant S protein was immunogenic and elicited TGEV neutralizing antibodies. This was in contrast to previous studies with TGEV N and M proteins expressed by rVVs that induced an immune response but no neutralizing antibodies (Pulford and Britton, 1990).

The TGEV S protein neutralizing epitopes and major antigenic sites were retained by the S $\Delta$  protein but this protein was not transported to the plasma membrane or through the Golgi stack and must therefore be accumulated in the endoplasmic reticulum. Hu *et al.* (1984) constructed an incomplete TGEV S protein gene that initiated 8 bp downstream of a *Hpa*I site but ended 80 bp upstream of a *Xba*I site. This gene construct expressed an Endo H sensitive  $M_r$  180,000 polypeptide that was not transported to the cell surface in rVV-infected cells (Hu *et al.*, 1985). Sequence analysis of the TGEV Purdue-115 (Jacobs *et al.*, 1987; Rasschaert *et*



*al.*, 1987) and FS772/70 (Britton and Page, 1990) strains demonstrated that the *Xba*I site was 3776 bp from the S protein initiation codon and within an ORF of 4350 bp, implying that the S gene product expressed by Hu *et al.* (1985) was a truncated protein.

Coronavirus S proteins are known to be highly glycosylated with N-linked oligosaccharides and undergo modification with complex sugars at the medial compartment of the Golgi stack during virus maturation (Niemann *et al.*, 1982). Simple high mannose and hybrid structures can be removed from glycoproteins by digestion with Endo H but glycoproteins modified with complex sugar structures are resistant to cleavage with Endo H (Hubbard and Ivatt, 1981; Dunphy and Rothman, 1985). The rVV vTS-1 produced two S protein species in human cells with different oligosaccharide composition, assigned gp190 and gp210, while the S $\Delta$  protein was expressed in human cells as a single glycoprotein species designated gp170. The gp210 was partially resistant to Endo H, suggesting that gp190 was modified to gp210 by the addition of complex oligosaccharides at the Golgi. The S $\Delta$  protein remained Endo H sensitive even after extensive chasing, implying that it was not transported to the Golgi stack.

Pulse-chase analysis of TGEV- or vTS-1-infected cells demonstrated that S protein was initially synthesized as gp190 but gradually accumulated as gp210 due to post-translational modifications. Endo H digestion of recombinant S protein expressed in HTK<sup>-</sup> produced a range ( $M_r$  160–210,000) of partially resistant polypeptides. Both of these observations were made for the FIPV (79-1146) S protein expressed in a bovine papilloma virus transformed mouse cell line (de Groot *et al.*, 1989). However, the TGEV S gene expressed by a rVV in porcine LLC-PK1 cells produced an Endo H-resistant gp210 product with no partially resistant Endo H intermediates. A similar observation was also made for the FIPV S gene expressed by a rVV in feline cells (Vennema *et al.*, 1990), suggesting that expression of coronavirus S proteins in a cell line compatible with their origin may have profound effects upon the extent of post-translational processing of these proteins.

The acquisition of Endo H resistance was significantly retarded for recombinant S protein compared to S protein expressed during a TGEV infection. Retardation of coronavirus S protein intracellular transport has also been observed for the FIPV and MHV S proteins expressed by rVVs (Vennema *et al.*, 1990). In this study, retardation between the RER and the Golgi in the absence of virus budding was interpreted as a transient accumulation of the S protein at or near the site of virus budding and suggested that the S protein may have a role in defining the site of virus budding, a func-

tion previously ascribed to the M proteins of coronaviruses (Tooze *et al.*, 1985). Immunofluorescence studies with vTS-infected cells demonstrated that recombinant S protein accumulated in a polar perinuclear compartment of the cell, a similar observation was seen for the cellular localization of rVV expressed TGEV M protein (Pulford and Britton, 1990), and at the cell surface. The presence of TGEV gp210 in the culture medium of vTS-infected cells suggested that gp210 may be released from the cell.

Proteins can be transported from the RER to the Golgi by interacting with carrier proteins or following membrane incorporation, by the flow of membrane from the ER to the cell surface. This membrane flow may be responsible for the cell surface presence of coronavirus S proteins. The S $\Delta$  protein was not processed in the Golgi apparatus, nor found on the cell surface nor found to be exported into the extracellular medium, indicating that the C-terminal membrane anchor domain of TGEV S protein may be required for all of these functions. Puddington *et al.* (1986) used a mutant VSV G protein to establish that the cytoplasmic tail of the G protein was essential for its transport through the Golgi stack. In addition, Bray *et al.* (1989) used rVVs to demonstrate that a Dengue virus envelope protein truncated at the C-terminus, unlike the wild-type protein, was not secreted into the extracellular medium. However, Sveda *et al.* (1982) found that C-terminal sequences of the influenza virus hemagglutinin (HA) were essential for cell surface expression and that mutants with a disrupted anchor domain were secreted, suggesting that influenza virus HA, unlike TGEV, VSV, and Dengue virus envelope proteins, underwent a different protein maturation pathway. Evidence suggests that unless a membrane glycoprotein folds into a native or near-native conformation it will not be exported from the RER (Lodish, 1988). However, the general conformation and antigenicity of the S $\Delta$  protein appeared to be retained as it reacted with both polyclonal and monoclonal TGEV S antisera in contrast to denatured S protein or S protein expressed in *E. coli* cells (Correa *et al.*, 1990; Delmas *et al.*, 1990; Pulford, unpublished observations). The results presented in this paper suggest that the S $\Delta$  protein was retained in the RER possibly due to the removal of essential C-terminal transport signals.

## ACKNOWLEDGMENTS

We would like to thank Miss K. Mawditt for synthesizing the oligonucleotide used in the sequencing, Mrs. A. Waite for carrying out the animal inoculations and Dr D. Pocock for helpful comments on the manuscript. This research was supported by the Biotechnology Action Programme of the Commission of the European Communities Contract N° [BAP-0235-UK(HI)].

## REFERENCES

- BRAY, M., ZHAO, B., MARKOFF, L., ECKELS, K. H., CHANOCK, R. M., and LAI, C.-J. (1989). Mice immunised with recombinant vaccinia virus expressing Dengue 4 virus structural proteins with or without non-structural protein NS1 are protected against fatal Dengue virus encephalitis. *J. Virol.* **63**, 2853–2856.
- BRITTON, P. and PAGE, K. W. (1990). Sequence of the S gene from a virulent British field isolate of transmissible gastroenteritis virus. *Virus Res.* **18**, 71–80.
- COLLINS, A. R., KNOBLER, R. L., POWELL, H., and BUCHMEIER, M. J. (1982). Monoclonal antibodies to murine hepatitis virus-4 (strain JHM) define the viral glycoprotein responsible for attachment and cell-cell fusion. *Virology* **119**, 358–371.
- CORREA, I., GEBUR, F., BULLIDO, M. J., SUNE, C., BAAY, M. F. D., ZWAAGSTRA, K. A., POSTHUMUS, W. P. A., LENSTRA, J. A., and ENJUANES, L. (1990). Localization of antigenic sites of the E2 glycoprotein of transmissible gastroenteritis coronavirus. *J. Gen. Virol.* **71**, 271–279.
- DE GROOT, R. J., MADURO, J., LENSTRA, J. A., HORZINEK, M. C., VAN DER ZEIJST, B. A. M., and SPAAN, W. J. M. (1987). cDNA cloning and sequence analysis of the gene encoding the peplomer protein of feline infectious peritonitis virus. *J. Gen. Virol.* **68**, 2639–2646.
- DE GROOT, R. J., VAN LEEN, R. W., DALDERUP, M. J. M., VENNEMA, H., HORZINEK, M. C., and SPAAN, W. J. M. (1989). Stably expressed FIPV peplomer protein induces cell fusion and elicits neutralizing antibodies in mice. *Virology* **171**, 493–502.
- DELMAS, B., RASSCHAERT, D., GODET, M., GELFI, J., and LAUDE, H. (1990). Four major antigenic sites of the coronavirus transmissible gastroenteritis virus are located on the amino-terminal half of spike glycoprotein S. *J. Gen. Virol.* **71**, 1313–1323.
- DUNPHY, W. G., and ROTHMAN, J. E. (1985). Compartmental organization of the Golgi stack. *Cell* **42**, 13–21.
- FLEMING, J. O., TROUSDALE, M. D., EL-ZAATARI, F. A. K., STOHLMAN, S. A., and WEINER, L. P. (1986). Pathogenicity of antigenic variants of murine coronavirus JHM selected with monoclonal antibodies. *J. Virol.* **58**, 869–875.
- GARWES, D. J., and POCOCK, D. H. (1975). The polypeptide structure of transmissible gastroenteritis virus. *J. Gen. Virol.* **29**, 25–34.
- GARWES, D. J., LUCAS, M. H., HIGGINS, D. A., PIKE, B. V., and CARTWRIGHT, S. F. (1978/79). Antigenicity of structural components from porcine transmissible gastroenteritis virus. *Vet. Microbiol.* **3**, 179–190.
- GARWES, D. J., STEWART, F., and ELLEMAN, C. J. (1987). Identification of epitopes of immunological importance on the peplomer of porcine transmissible gastroenteritis virus. In "Coronaviruses" (M. M. C. Lai and S. A. Stohman, Eds.), *Adv. Exp. Med. Biol.*, Vol. 218, pp. 509–515. Plenum, New York/London.
- HOFMANN, M., and WYLER, R. (1988). Propagation of the porcine epidemic diarrhoea in cell culture. *J. Clin. Microbiol.* **26**, 2235–2239.
- HU, S., BRUSZEWSKI, J., BOONE, T., and SOUZA, L. (1984). Cloning and expression of the surface glycoprotein gp195 of porcine transmissible gastroenteritis virus. In "Modern Approaches to Vaccines" (R. M. Channock and R. A. Lerner, Eds), pp. 219–223. Cold Spring Harbor Laboratory, Cold Spring Harbor, NY.
- HU, S., BRUSZEWSKI, J., and SMALLING, R. (1985). Infectious vaccinia virus recombinant that expresses the surface antigen of porcine transmissible gastroenteritis virus (TGEV). In "Vaccinia Viruses as Vectors for Vaccine Antigens" (G. V. Quinnan Jr, Ed.), pp. 201–208. Elsevier, The Netherlands.
- HUBBARD, S. C., and IVATT, R. J. (1981). Synthesis and processing of asparagine linked oligosaccharides. *Annu. Rev. Biochem.* **50**, 555–583.
- JACOBS, L., DE GROOT, R., VAN DER ZEIJST, B. A. M., HORZINEK, M. C., and SPAAN, W. (1987). The nucleotide sequence of the peplomer gene of porcine transmissible gastroenteritis virus (TGEV): Comparison with the sequence of the peplomer protein of feline infectious peritonitis virus (FIPV). *Virus Res.* **8**, 363–371.
- JIMENEZ, G., CORREA, I., MELGOSA, M. P., BULLIDO, M. J., and ENJUANES, L. (1986). Critical epitopes in transmissible gastroenteritis virus neutralization. *J. Virol.* **60**, 131–139.
- LAEMMLI, U. K. (1970). Cleavage of structural proteins during the assembly of the head of the bacteriophage T<sub>4</sub>. *Nature (London)* **227**, 680–685.
- LAUDE, H., CHAPSAL, J.-M., GELFI, J., LABIAU, S., and GROSCLAUDE, J. (1986). Antigenic structure of transmissible gastroenteritis virus. I. Properties of monoclonal antibodies directed against virion proteins. *J. Gen. Virol.* **67**, 119–130.
- LODISH, H. F. (1988). Transport of secretory and membrane glycoproteins from the rough endoplasmic reticulum to the Golgi. *J. Biol. Chem.* **263**, 2107–2110.
- MACKETT, M., SMITH, G. L., and MOSS, B. (1984). General method for production and selection of infectious vaccinia virus recombinants expressing foreign genes. *J. Virol.* **49**, 857–864.
- MACKETT, M., SMITH, G. L., and MOSS, B. (1985). The construction and characterisation of vaccinia virus recombinants expressing foreign genes. In "DNA Cloning, a Practical Approach" (D. M. Glover, Ed.), Vol. 2, pp. 191–211. IRL Press, Oxford Washington D.C.
- MANIATIS, T., FRITSCH, E. F., and SAMBROOK, J. (1982). "Molecular Cloning: A Laboratory Manual," first ed. Cold Spring Harbor Laboratory, Cold Spring Harbor, NY.
- NIEMANN, H., BOSCHKE, B., EVANS, D., ROSING, M., TAMURA, T., and KLENK, H.-D. (1982). Post-translational glycosylation of glycoprotein E1: Inhibition by monensin. *EMBO J.* **1**, 1499–1504.
- PUDDINGTON, L., MACHAMER, C. E., and ROSE, J. K. (1986). Cytoplasmic domains of cellular and viral integral membrane proteins substitute for the cytoplasmic domain of the vesicular stomatitis virus glycoprotein in transport to the plasma membrane. *J. Cell. Biol.* **102**, 2147–2157.
- PULFORD, D. J., BRITTON, P., PAGE, K. W., and GARWES, D. J. (1990). Expression of TGEV structural genes in virus vectors. In "Coronaviruses and Their Diseases" (D. Cavanagh and T. D. K. Brown, Eds.), *Adv. Exp. Med. Biol.*, Vol. 276, pp. 223–231. Plenum, New York/London.
- PULFORD, D. J., and BRITTON, P. (1990). Expression and cellular localisation of porcine transmissible gastroenteritis virus N and M proteins by recombinant vaccinia viruses. *Virus Res.* **18**, 203–218.
- RASSCHAERT, D., and LAUDE, H. (1987). The predicted structure of the peplomer protein E2 of the porcine coronavirus transmissible gastroenteritis virus. *J. Gen. Virol.* **68**, 1883–1890.
- SPAAN, W., CAVANAGH, D., and HORZINEK, M. C. (1988). Coronaviruses: Structure and genome expression. *J. Gen. Virol.* **69**, 2939–2952.
- STURMAN, L. S., RICARD, C. S., and HOLMES, K. V. (1985). Proteolytic cleavage of the E2 glycoprotein of murine coronavirus: Activation of cell-fusing activity of virions by trypsin and separation of two different 90K cleavage fragments. *J. Virol.* **56**, 904–911.
- SVEDA, M. M., MARKOFF, L., and LAI, C. J. (1982). Cell surface expression of the influenza virus haemagglutinin requires the hydrophobic carboxy-terminal sequences. *Cell* **30**, 649–659.
- TOOZE, J., TOOZE, S. A., and WARREN, G. (1985). Laminated cisternae of the rough endoplasmic reticulum induced by coronavirus MHV-A59 infection. *Eur. J. Cell Biol.* **26**, 108–115.
- VENNEMA, H., HEIJNENS, L., ZUDERVELD, A., HORZINEK, M. C., and SPAAN, W. J. M. (1990). Intracellular transport of recombinant coronavirus spike proteins: Implications for virus assembly. *J. Virol.* **64**, 339–346.