



Since January 2020 Elsevier has created a COVID-19 resource centre with free information in English and Mandarin on the novel coronavirus COVID-19. The COVID-19 resource centre is hosted on Elsevier Connect, the company's public news and information website.

Elsevier hereby grants permission to make all its COVID-19-related research that is available on the COVID-19 resource centre - including this research content - immediately available in PubMed Central and other publicly funded repositories, such as the WHO COVID database with rights for unrestricted research re-use and analyses in any form or by any means with acknowledgement of the original source. These permissions are granted for free by Elsevier for as long as the COVID-19 resource centre remains active.



Exploiting genes and functional diversity of chlorogenic acid and luteolin biosyntheses in *Lonicera japonica* and their substitutes



Yuan Yuan ^a, Zhouyong Wang ^a, Chao Jiang ^a, Xumin Wang ^b, Luqi Huang ^{a,*}

^a Institute of Chinese Materia Medica, Academy of Chinese Medical Sciences, Beijing 100700, China

^b CAS Key Laboratory of Genome Sciences and Information, Beijing, 100029, China

ARTICLE INFO

Article history:

Accepted 20 September 2012

Available online 17 October 2012

Keywords:

Honeysuckle
Orthologous genes
Gene expression
Chlorogenic acid
Luteolin

ABSTRACT

Chlorogenic acids (CGAs) and luteolin are active compounds in *Lonicera japonica*, a plant of high medicinal value in traditional Chinese medicine. This study provides a comprehensive overview of gene families involved in chlorogenic acid and luteolin biosynthesis in *L. japonica*, as well as its substitutes *Lonicera hypoglauca* and *Lonicera macranthoides*. The gene sequence feature and gene expression patterns in various tissues and buds of the species were characterized. Bioinformatics analysis revealed that 14 chlorogenic acid and luteolin biosynthesis-related genes were identified from the *L. japonica* transcriptome assembly. Phylogenetic analyses suggested that the function of individual gene could be differentiation and induce active compound diversity. Their orthologous genes were also recognized in *L. hypoglauca* and *L. macranthoides* genomic datasets, except for *LHCHS1* and *LMC4H2*. The expression patterns of these genes are different in the tissues of *L. japonica*, *L. hypoglauca* and *L. macranthoides*. Results also showed that CGAs were controlled in the first step of biosynthesis, whereas both steps controlled luteolin in the bud of *L. japonica*. The expression of *LJFNS2* exhibited positive correlation with luteolin levels in *L. japonica*. This study provides significant information for understanding the functional diversity of gene families involved in chlorogenic acid and the luteolin biosynthesis, active compound diversity of *L. japonica* and its substitutes, and the different usages of the three species.

© 2012 Published by Elsevier B.V.

1. Introduction

Phenylpropanoids (PDCs), as ubiquitous plant secondary metabolites, control flower color, pollination, and stress response (Verweridis et al., 2007). As constituents of plant-rich diets and an assortment of herbal medicinal agents, phenylpropanoids exhibit measurable cancer chemopreventive, antimutagenic, estrogenic, antimalarial, antioxidant, and anti-asthmatic activities (Ferrer et al., 2008). In the last two decades, the molecular biochemistry and genomics of phenylpropanoid biosynthesis have attracted widespread interest (Fraser and Chapple, 2011). Due to the important role of PDCs in plant development and the potential value of metabolic engineering of PDC biosynthesis pathways, identification and characterization of genes encoding the enzymes involved in PDC biosynthesis have been carried out in various plant species, such as *Arabidopsis* (Fraser and Chapple, 2011) and tomato (Adato et al., 2009).

Lonicera japonica Thunb (LJ) and its substitutes are anti-inflammatory herbs that have been used in traditional Chinese medicine

for thousands of years (Shang et al., 2011). This important Chinese medicine is used to prevent and treat severe acute respiratory syndromes, H1N1 influenza, and hand-foot-and-mouth disease. *L. japonica* extracts also possess other biological and pharmaceutical properties, including anti-bacterial, anti-inflammatory, anti-viral, liver protectant, anti-angiogenic, and antinociceptive activities (Ku et al., 2009). *L. japonica* substitutes that have been recorded as Chinese material medicine in China pharmacopoeia include *L. hypoglauca* Miquel (LH), *L. macranthoides* Hand.-Mazz (LM), *L. confusa*, and *L. fulvotomentosa*.

Genes for phenylpropanoid synthesis pathway are members of diverse gene families. Their isolation and characterization can provide important clues about enzyme evolution in plant secondary metabolism (Fraser and Chapple, 2011). For *L. japonica* and its substitutes, the gene families involved in phenylpropanoid biosynthesis exhibit expansion and diversification in different species, suggesting diversification of chemical compounds.

Chlorogenic acid is a major family of soluble plant phenolics (Clifford, 1999) commonly found in Asteraceae, Solanaceae, and Rubiaceae (Molgaard and Ravn, 1988). *L. japonica* and its substitutes belong to the Caprifoliaceae family, which exhibits accumulation of CGAs in their flowers, stems, and leaves (Chen et al., 2010; Zhang et al., 2009). Luteolin is a flavonoid commonly found in fruits and vegetables. This compound has anti-inflammatory, antioxidant, and anti-cancer properties (Lim et al., 2012). Both CGAs and luteolin-7-O-glucoside (L7G) are standard compounds used to evaluate the chemical quality

Abbreviations: RACE, rapid amplification of cDNA ends; cDNA, complementary DNA; DNA, deoxyribonucleic acids; *Sp*, *Selaginella pulvinta*; TPS, trehalose-6-phosphate synthase; TPS, trehalose-6-phosphate synthase gene; TPP, trehalose-6-phosphate phosphatase; RNA, ribonucleic acids; DP, degenerate primer; ORF, open reading frame; PCR, polymerase chain reaction.

* Corresponding author. Fax: +86 10 84044340.

E-mail address: huangluqi@163.net (L. Huang).

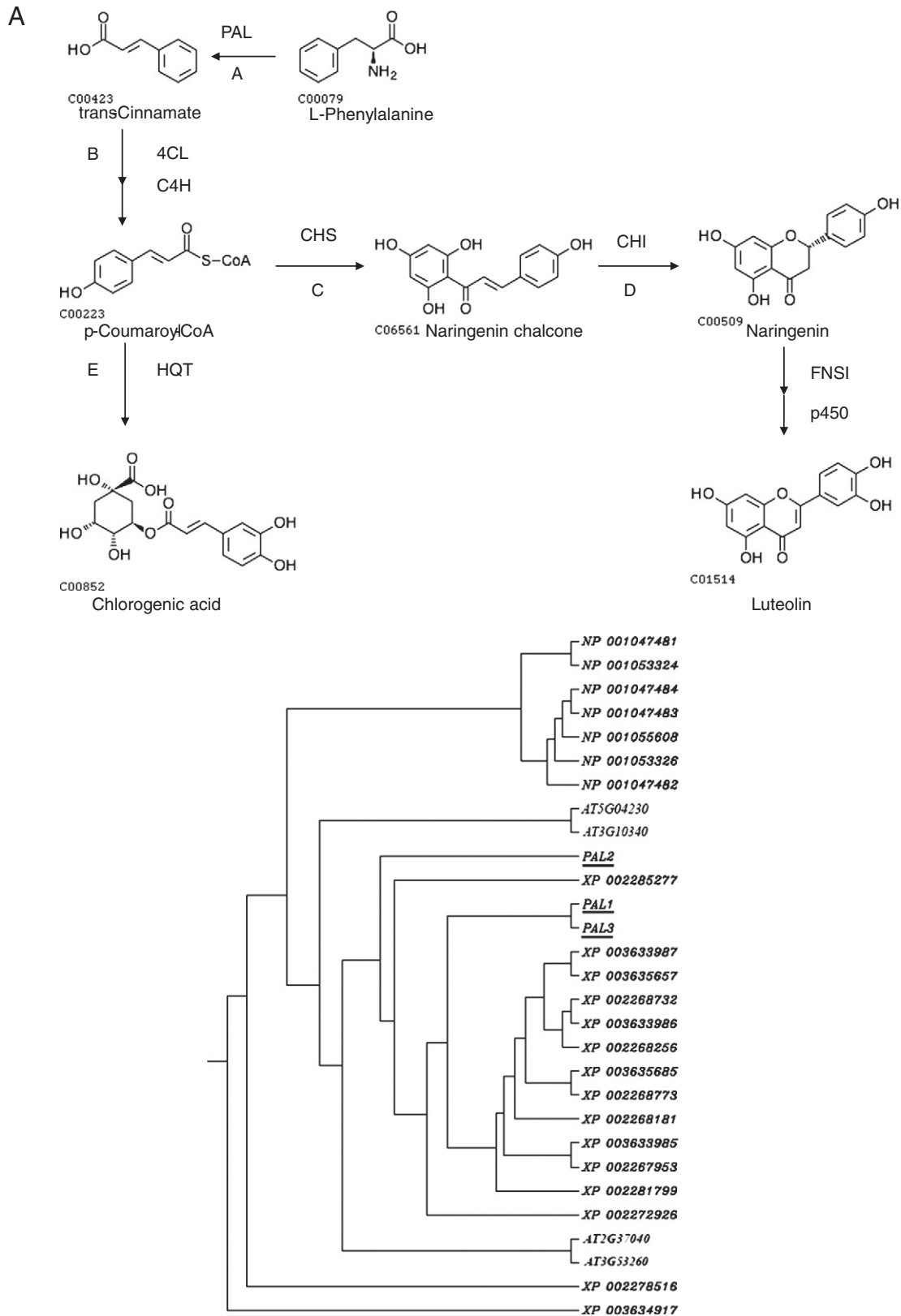


Fig. 1. Biosynthesis of chlorogenic acid and luteolin. PAL, phenylalanine amoniar-lyase; 4CL, 4-coumarate CoA ligase; C4H, cinnamate 4-hydroxylase; CHS, chalcone synthase, CHI, chalcone isomerase FNS, flavone synthase; HQT, hydroxycinnamoyl-CoA quinate hydroxycinnamoyl transferase. A, Phylogenetic relationship of plant PALs. The rooted Neighbor-joining tree was constructed using the ClustalW program. PALs included 4 Arabidopsis thaliana, 7 rice, 15 wine grape and 3 *Lonicera japonica* PALs. B, Phylogenetic relationship of plant 4CLs. The rooted neighbor-joining tree was constructed using the ClustalW program. 4CLs included 4 Arabidopsis thaliana, 10 rice, 2 wine grape and 2 *Lonicera japonica* 4CLs. C, Phylogenetic relationship of plant CHSs. The rooted neighbor-joining tree was constructed using the ClustalW program. CHSs included 1 Arabidopsis thaliana, 12 rice, 5 wine grape and 2 *Lonicera japonica* CHSs. D, Phylogenetic relationship of plant CHIs. The rooted neighbor-joining tree was constructed using the ClustalW program. CHIs included 5 Arabidopsis thaliana, 7 rice, 4 wine grape and 2 *Lonicera japonica* CHIs. E, Phylogenetic relationship of plant HQTs. The rooted neighbor-joining tree was constructed using the ClustalW program. HQTs included 1 Arabidopsis thaliana, 6 rice, 2 wine grape and 2 *Lonicera japonica* HQTs. The genes in this study were indicated by underline.

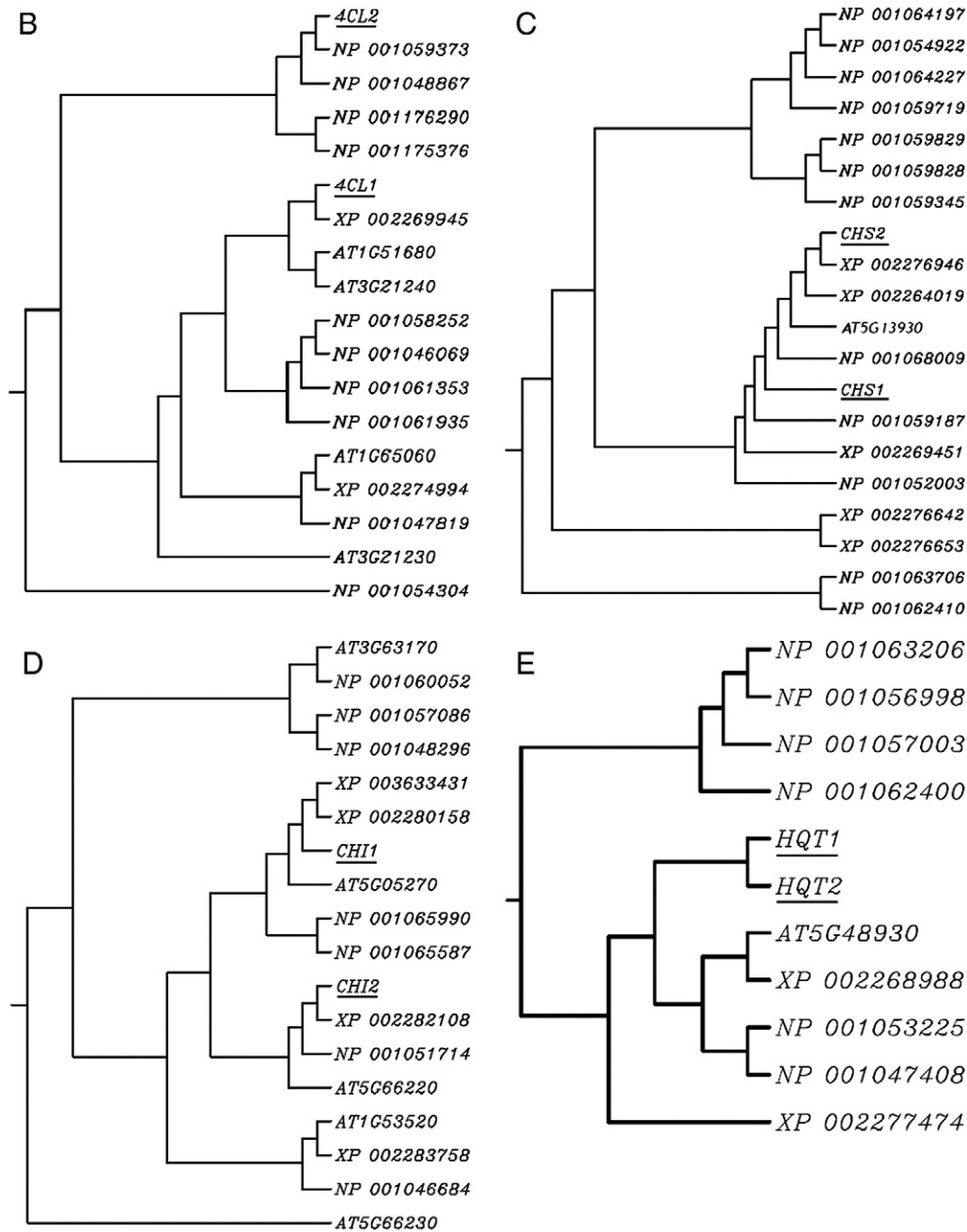


Fig. 1 (continued).

of *L. japonica*. However, only chlorogenic acid is used to evaluate the chemical quality of *L. hypoglauca*, *L. macranthoides*, *L. confusa*, and *L. fulvotomentosa* (Chinese pharmacopoeia, 2010). The content of chlorogenic acid in buds of *L. japonica* is higher than in its leaves (Zhao et al., 2010), whereas in *L. hypoglauca*, buds have lower CGAs than leaves (Deng, 2007).

Generally, the biosynthesis of CGAs and luteolin is controlled by the phenylpropanoid pathway and can be divided into two stages (Fig. 1). The first stage leads to the synthesis of the universal precursor, p-Coumaroyl-CoA, under the catalysis of phenylalanine ammonia-lyase (PAL), 4-coumarate CoA ligase (4CL), and cinnamate 4-hydroxylase (C4H). In the second stage, luteolin is synthesized under the catalysis of chalcone synthase (CHS), chalcone isomerase (CHI), flavone synthase (FNS), and a P450 modifying enzyme. CGA is synthesized under the catalysis of hydroxycinnamoyl-CoA quinate hydroxycinnamoyl transferase (HQT). Bai et al. (2010) isolated a

LJHQT gene and showed that the tissue distribution of HQT is correlated with the pattern of CGA abundance. Yuan et al. (2012) completed *L. japonica* transcriptome and obtained genes in the biosynthetic pathway of CGA and luteolin.

Recently, the genome sequencing program of *L. japonica* substitutes including *L. hypoglauca* and *L. macranthoides*, has been initiated. A working draft of the genome has been obtained (Yuan et al., unpublished data). The current assembly consists of 1,142,296 and 1,537,755 contigs representing ~85% of the protein-coding genes in the entire *L. hypoglauca* and *L. macranthoides* genome, respectively. The assembly allows a genome-wide identification and characterization of genes involved in chlorogenic acid and luteolin biosynthesis.

To understand the biosynthesis of chlorogenic acid and luteolin, we characterized the genes involved in the synthesis pathway. This study shows that almost all enzymes involved in the phenylpropanoid pathway of *L. japonica* and its substitutes are encoded by multigene families.

The results in this study will be helpful for the modification of the accumulation of active components by biotechnological means in the future.

2. Materials and methods

2.1. Plant materials

Fresh buds and leaves of *L. japonica*, *L. hypoglauca*, and *L. macranthoides* were collected from Guangxi province, China in May 2011. During this month, buds were formed, and in pharmacological perspective, active components were rapidly accumulating. Six plants were sampled for each species. Samples were authenticated by Prof. Liying Yu (Guangxi Medical Plant Garden, China).

2.2. Sequence retrieval and gene prediction

We applied RNA-seq to *L. japonica* and generated over 100 million reads using Illumina's GA platform (Yuan et al., 2012). The current assembly of *L. japonica* transcriptome was investigated for homologs of chlorogenic acid and luteolin biosynthesis-related proteins from various plant species using BLASTx algorithm (Altschul et al., 1997). An e-value cut-off of 10^{-5} was applied to the homolog recognition. *L. hypoglauca* and *L. macranthoides* genome sequences (Yuan et al., unpublished data) were searched for orthologs from *L. japonica* genes. An all-against-all sequence comparison was performed using BLAST (cut-off $<10^{-20}$) to identify orthologs. They were determined from the best reciprocal hits ($>80\%$ alignment length) (Tatusov et al., 1997). All retrieved sequences from the Genscan web server (<http://genes.mit.edu/GENSCAN.html>) were used for gene prediction (Burge and Karlin, 1998). The predicted gene models were further examined and corrected manually by comparison with related genes identified from other plant species.

2.3. Sequence feature analysis

Theoretical isoelectric point and molecular weight were predicted using Compute pI/MW tool on the ExPASy server (Bjellqvist et al., 1994) (http://web.expasy.org/compute_pi/). The localizations of deduced proteins were predicted on the TargetP 1.1 server (<http://www.cbs.dtu.dk/services/TargetP/>) (Emanuelsson et al., 2007), iPSORT, and PSORT programs (ipsort.hgc.jp/). Conserved domains were searched against the Pfam protein family database using InterProScan (<http://www.ebi.ac.uk/Tools/pfa/iprscan/>) (Quevillon et al., 2005). The conserved amino acids were analyzed by protein alignment using tools such as ClustalW, and were checked manually (Thompson et al., 1994).

Table 1

Biosynthesis genes of Chlorogenic acid and Luteoloside in *Lonicera Japonica*.

Name	GenBank no.	Length (aa)	Molecular weight(KD)	Isoelectric point	Subcellular localization	Signal peptide	Domains (# of domains)	Reference
PAL1	JX068601	714	77.4	6.11	Cytosol	–	Phenylalanine/histidine ammonia-lyase (IPR001106)	This study
PAL2	JX068602	707	77.2	6.26	Cytosol	–		This study
PAL3	JX068603	701	76.3	5.90	Cytosol	–		This study
4CL1	JX068604	538	58.7	5.73	Cytosol	–	AMP-dependent synthetase/ligase	This study
4CL2	JX068605	540	58.7	8.49	Cytosol	–	(IPR000873)	This study
CHS1	JX068606	351	38.2	6.10	Cytosol	–	Chalcone/stilbene synthase, N-terminal (IPR001099)	This study
CHS2	JX068607	393	42.9	6.34	Cytosol	–		This study
CHI1	JX068608	208	23.2	4.76	Cytosol	–	Chalcone isomerase, subgroup (IPR003466)	This study
CHI2	JX068609	240	26.1	5.44	Chloroplast	–		This study
C4H1	JX068610	505	58.1	9.09	Cytosol	Yes	Cytochrome P450 (IPR001128)	This study
C4H2	JX068611	535	61.1	8.73	Cytosol	Yes		This study
HQT1	ACZ52698							Peng et al., 2010
HQT2	JF261014							
FNS1	JX068612	Partial cDNA						This study
FNS2	JX068613	Partial cDNA						This study

Table 2

Primer sequences for real-time RT-PCR.

Gene	Forward sequence	Reverse sequence
PAL1	GACTTGAGGCATTGGAGGA	AGAACCTTGAGGGGTGGACT
PAL2	TGCCGAAAGAAGTCGAAAGT	TGCAAACTACTCGCCCTCA
PAL3	AAATGCGTCGATCTCCAGA	AACCGGATTCTCACTCTCCA
4CL1	GCCAAACTTGGACAGGGTTA	ATAACGGCGTTTCTCACAC
4CL2	CATTCCCTCAACTCTCAA	GAGGAGATAAGGGCGGTTTC
CHS1	TTCGTGGTTAAGGACCATTTC	TGAAAGAAAAATAAACCCAAGACC
CHS2	ATCCGGACAAGTCTGTCGAG	GCACGTCCTCAACAAATGA
CHI1	TCCCTGCAACTTCTTCCACT	TCCCACCCAAGTACCCTTC
CHI2	AACGGGGCAACAATACTCAG	ATGAGCCAAGAGGTGATTGG
C4H1	CGGTTCCATTCCTAAAAT	ATTTATAGAGGCGGGGGTTG
C4H2	CTTTTCCCATCTGACCAACC	CTTTTCCCATCTGACCAACC
HQT1	TGAGATCCTAGCTGCCACT	TGGCTGTGAACACCACTTT
HQT2	CAATCAAGTCCCAAGGCTGT	GGCAGCTAGGACCTCGTATG
FNS1	AGGCTAGTGAGGGGGTGAAAC	CACCTACGTACCAATGTCTT
FNS2	AGGGAAGCACAGGCTAGTCA	GGTGTAGCCGAGATGTGGT
18S	TGGTGGTCGTAACATTC	TCCTTGTAAGTTCTTTTCTT

2.4. Phylogenetic analysis

Phylogenetic analyses of the alignments were performed using ClustalW (Thompson et al., 1994) and MEGA 5.0 (Tamura et al., 2011) for neighbor-joining (NJ) analysis. The reliability of these tree topologies was evaluated using bootstrap support with 1000 replicates (Kumar et al., 2008).

2.5. RNA extraction

Total RNA was extracted from plant tissues using Trizol Reagent (Invitrogen, USA) and was pre-treated with RNase-Free DNase (Promega, USA) to eliminate genomic DNA contamination. RNA integrity was analyzed on 1% agarose gel. RNA quantity was determined using NanoDrop 2000C Spectrophotometer (Thermo Scientific, USA).

2.6. Quantitative real-time reverse transcription-PCR

Total RNA was reverse-transcribed by Reverse Transcriptase MMLV (Takara, China). The polymerase chain reactions (PCRs) were performed according to the instructions in SYBR premix Ex Taq kit (TaKaRa, China) and were carried out in triplicate using 7500 real-time PCR system (ABI, USA). Gene-specific primers were designed using primer designing tools, particularly Primer3 (<http://frodo.wi.mit.edu/primer3/>) (Rozen and Skaletsky, 2000). The primer sequences found in orthologs of *L. japonica*, *L. hypoglauca*, and *L. macranthoides* are listed in Table 2. The lengths of amplicons range between 100 bp and 250 bp. Lj18S was chosen as an endogenous control in studying

gene expressions in buds and leaves of *L. japonica*, *L. hypoglauca*, and *L. macranthoides*. Standard deviations were calculated from the three PCR replicates. The specificity of amplification was assessed by melting curve analysis, and the relative abundance of genes was determined using the comparative Ct method as suggested by the 7500 Software v2.0.1 (ABI, USA).

2.7. Enzyme activity assay

The activity of PAL was analyzed according to Brueske's method (Brueske, 1980). Approximately 500 mg of homogenized plant material in 5 mL 25 mM borate-HCl buffer (cold) with pH 8.8 and 5 mM mercaptoethanol (0.4 mL/L) was prepared. The homogenate was subjected to centrifugation at 12,000 g for 20 min. Then, the supernatant was used as an enzyme source. Reaction rate was expressed as micromole trans-cinnamic acid formed per mg protein per min.

For C4H and 4CL, 500 mg of plant material was extracted and mixed with 200 mM Tris-HCl buffer (pH 7.5) containing 25% (v/v) glycerol and 0.1 M DTT. The extracts were then homogenized and centrifuged at 10,000 g for 20 min at 4 °C. The supernatants were used for the enzyme assays. C4H activity was assayed using the method described by Cao et al. (2010) with slight modifications. The extract (0.2 mL) was added to 2-mercaptoethanol, 2 mM trans-cinnamic acid, and 0.5 mM NADPH, which was subsequently incubated for 1 h at 37 °C. The reaction was stopped with 6 M HCl. The absorbance values were measured at 290 nm. One unit of C4H activity was defined as the amount of enzyme causing an increase in A_{290} of 0.001 unit h^{-1} .

The method of Voo et al. (1995), which entails monitoring the increase in A_{333} using p-coumarate, was used to assay 4CL activity. The 1 mL reaction mixture contained 50 μ L crude enzyme, 0.2 mM p-coumarate, 0.8 mM ATP, 7.5 mM $MgCl_2$, and 38 M CoA in 100 mM Tris-HCl buffer (pH 7.5). One unit of 4CL was defined as the amount of enzyme that causes a decrease in A_{333} of 0.01 units min^{-1} .

Protein concentration in the extracts was determined using Lowry method (Lowry et al., 1951).

2.8. Chemical analysis

As with our previous report, dried buds or leaves were separately comminuted with a miller. Each solid sample (40 mesh, 0.50 g) was accurately weighed and extracted with 50 mL of 70% aqueous ethanol by ultrasonication for 30 min. The extract was cooled to 25 °C, diluted to 50 mL with 70% aqueous ethanol, and filtered with 0.45 μ m Millipore filter membrane. Afterward, 10 μ L of the filtrate was injected into the HPLC system for analysis. The HPLC system was an Agilent 1200LC series (Agilent Technologies, Palo Alto CA, USA) composed of an online vacuum degasser (G1379B), a Bin pump SL (G1312B), an auto-sampler (GB67C), a thermostatic column compartment (G1316B), and a diode-array detector (DAD) (G1315C) coupled with an analytical workstation. The column configuration was an Agilent TC-C18 reserved-phase column (5 μ m, 250 mm \times 4.6 mm). The sample injection volume was 10 μ L. The detection wavelength was set at 242 nm for the analysis with a flow rate of 1.0 mL min^{-1} and 25 °C column temperature. The mobile phase was composed of deionized water-formic acid (A; 99:1, v/v) and methanol (B).

3. Results

3.1. Identification of 14 *L. japonica* chlorogenic acid and luteolin biosynthesis-related genes

Using systematic computational approach, 14 chlorogenic acid and luteolin biosynthesis-related genes were identified from the current *L. japonica* transcriptome assembly, of which 12 are novel (Table 1). These genes are members of six gene families which encode all the enzymes involved in the biosynthesis of chlorogenic acid and luteolin

(Fig. 1). The deduced proteins demonstrated different lengths, isoelectric points (pI), molecular weights, subcellular localizations, and signal peptides. They also contained conserved domains and motifs (Table 1). The sequences of newly found genes generated from this study were submitted to the GenBank database and the accession numbers are JX068601–JX068613.

3.2. Characterization of full-length cDNA from *L. japonica* new genes

Eleven full-length cDNAs were obtained from *L. japonica* chlorogenic acid and luteolin biosynthesis-related genes. PAL is the first enzyme in flavonoid biosynthesis and is responsible for the conversion of L-phenylalanine to trans-cinnamic acid. As in many plants, the active PAL isoforms of Arabidopsis are encoded by a gene family designated as PAL1–PAL4 (Raes et al., 2003). In this paper, three new cytosolic PAL genes were uncovered in *L. japonica*. LJPAL1, LJPAL2, and LJPAL3 show 71.46% to 74.64% and 82.74% to 86.73% identity at the nucleotide and amino acid levels, respectively. All three genes could encode proteins with domains and motifs conserved among previously known PALs in the Interpro database. They include the consensus phenylalanine/histidine ammonia-lyase domain (IPR001106), suggesting that LJPALs have the same type of biochemical activity (Table 1).

In addition to PAL, cinnamate 4-hydroxylase (C4H) and 4-coumarate: coenzyme A ligase (4CL) are important enzymes in allocating significant amounts of carbon from phenylalanine into the biosynthesis of several important secondary metabolites. Two C4H (*LJC4H1* and *LJC4H2*) and two 4CL (*LJ4CL1* and *LJ4CL2*) exist in *L. japonica*. C4H is a P450-dependent monooxygenase cytochrome that catalyzes the conversion of cinnamate into 4-coumarate (also known as p-coumarate; Fig. 1) (Lu et al., 2006). *LJC4H1* and *LJC4H2* showed 53.95% and 60.40% identity at the nucleotide and amino acid levels. They included the consensus Cytochrome P450 domain (IPR001128), suggesting that *LJC4Hs* have the same type of biochemical activity. The importance of 4CL genes and the proteins they encode is especially evident when one considers the role of the activated thioester p-coumaroyl CoA in plant secondary metabolism. In higher plants, p-coumaroyl CoA represents the starting point for the biosynthesis of not only phenylpropanoid compounds, but a wide variety of other secondary metabolites as well (Vogt, 2010). *LJ4CL1* and *LJ4CL2* show 18.92% identity at the nucleotide level and 30.30% at the amino acid level. They include the consensus AMP-dependent synthetase/ligase (IPR000873), suggesting that *LJ4CLs* have the same type of biochemical activity.

3.3. Phylogenetic analysis of chlorogenic acid and luteolin biosynthesis-related genes

Phylogenetic analysis shows that these proteins are highly similar to those involved in the biosynthesis of flavonoids in *Arabidopsis thaliana* and wine grape (Figs. 1A–E). Gene duplication and divergence contribute to genetic novelty and adaptation (Hittinger and Carroll, 2007). As shown in Fig. 1A, LJPAL1 and LJPAL3 have similar functions compared with LJPAL2. Two LJ4CLs, two LJCHSs, and two LJCHIs may have different functions (Figs. 1B, C, D), whereas two LJHQTs may have similar functions (Fig. 1E).

3.4. Orthologous gene in *L. hypoglauca* and *L. macranthoides*

CHS1 and C4H2 were not detected in the genome of *L. macranthoides* and *L. hypoglauca*, respectively. Sequences of other genes were submitted to GenBank (JX068614–JX068636) and first reported in this paper.

3.5. Content of chlorogenic acid and luteoloside

Chlorogenic acid and L7G are active compounds of *L. japonica* and its substitutes. The results of HPLC showed that chlorogenic acid content has no significant difference in the buds of the three species and

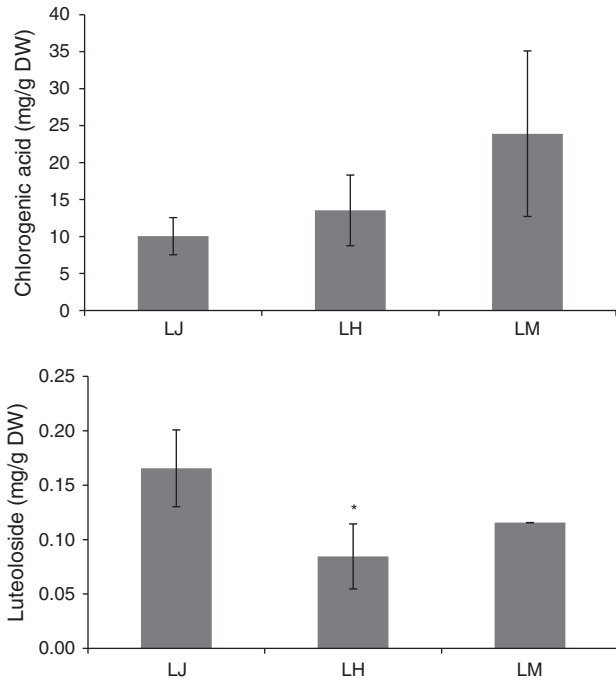


Fig. 2. Content of chlorogenic acid and luteoloside in bud of *Lonicera japonica* Thunb (LJ), *L. hypoglauca* Miquel (LH), and *L. macranthoides* Hand.-Mazz (LM). The star means the significant difference at $P < 0.05$ level.

the L7G content is lesser in buds of *L. hypoglauca* compared with those in *L. japonica* (Fig. 2). In *L. japonica*, chlorogenic acid in buds is higher than that in leaves; L7G in buds is lower than that in leaves, whereas luteolin content does not show significant difference (Fig. 3).

3.6. PAL gene family

The transcript levels of three individual LJPAL and total enzyme activity were investigated in various tissues of *L. japonica*, *L. hypoglauca*, and *L. macranthoides* to ascertain the function of LJPALs on the accumulation of chlorogenic acid and luteolin. The investigation included the buds and leaves used in traditional Chinese medicine as recorded in Chinese pharmacopoeia. Gene expression analysis revealed that the transcripts of *LJPAL1* and *LMPAL1* are more abundant in buds than in leaves, whereas the transcripts of *LHPAL2* and *PAL3* (*LHPAL3* and *LMPAL3*) are less abundant in buds than in leaves (Fig. 4). The total activity of PAL enzyme in buds is lower than that in leaves of *L. hypoglauca* and has no significant difference between buds and leaves of *L. japonica* and *L. macranthoides* (Fig. 5). The occurrence of

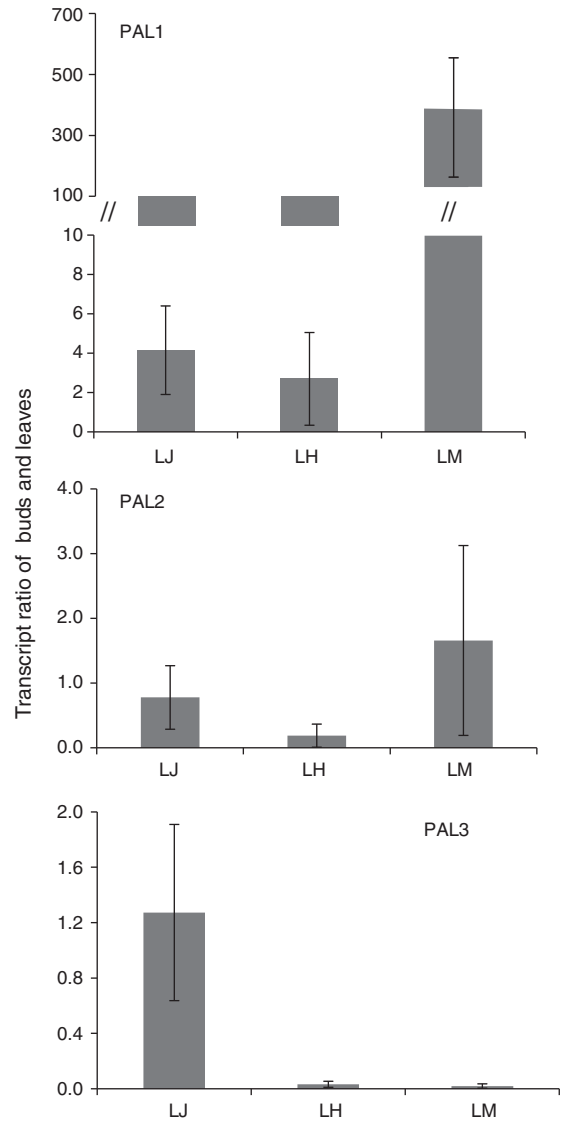


Fig. 4. The transcript ratio of PAL gene families in buds and leaves of *Lonicera japonica* Thunb (LJ), *L. hypoglauca* Miquel (LH), and *L. macranthoides* Hand.-Mazz (LM).

chlorogenic acid in buds of *L. hypoglauca* is lower than that in leaves (Deng, 2007), suggesting that PALs could be important enzymes in the regulation of CGAs and luteolin content in *L. hypoglauca*. Although the transcripts of PAL orthologous in buds of various species differ (Fig. 6), their activities are not significantly different (Fig. 5).

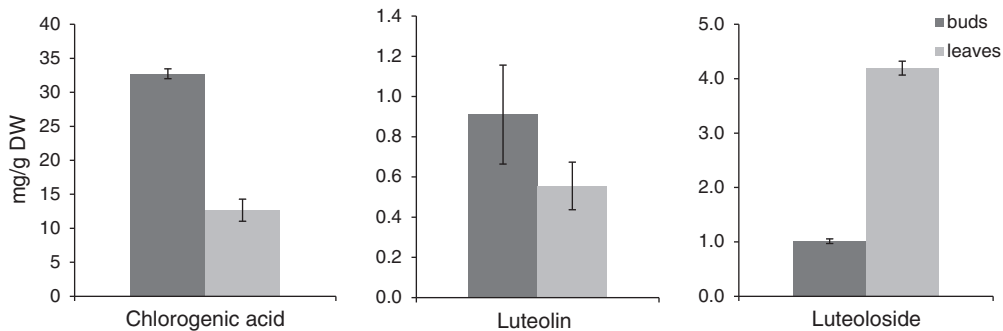


Fig. 3. Content of chlorogenic acid, luteolin and luteoloside in bud and leaves of *Lonicera japonica*.

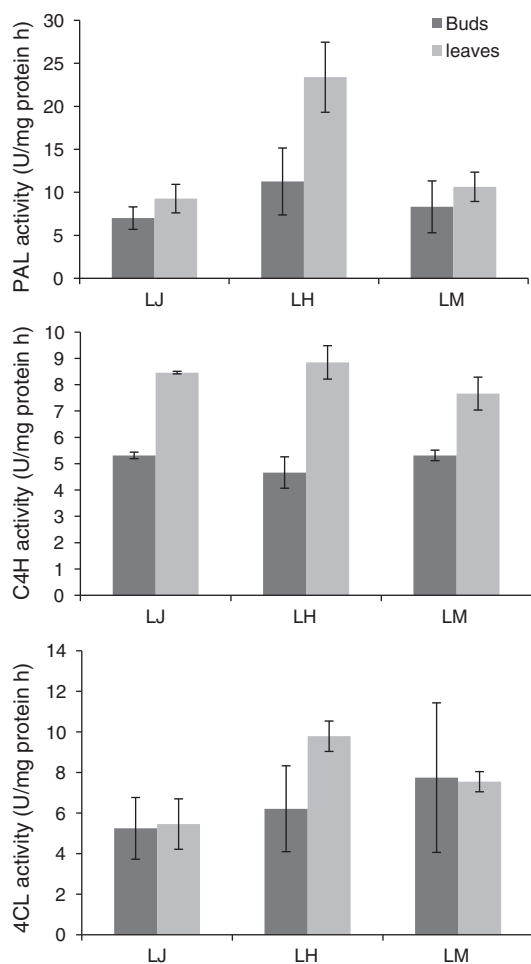


Fig. 5. Enzymatic activity of PAL, C4H and 4CL in buds and leaves of *Lonicera japonica* Thunb (LJ), *L. hypoglauca* Miquel (LH), and *L. macranthoides* Hand.-Mazz (LM).

3.7. C4H and 4CL gene family

The metabolic flux for the operation of the flavonoid pathway is maintained through the activities of C4H and 4CL (Kashmir et al., 2009), so chlorogenic acid and luteolin biosynthesis in *L. japonica* and its substitutes is critically dependent on the products of these enzymes. The expression of C4H and 4CL was also examined in the various tissues of the species used. Gene expression analysis revealed that the transcripts of *LJC4H2* and *LJ4CL2* were more abundant in buds than in leaves. Only *LJC4H1* was less abundant in buds (Supplement Fig. 1). Orthologous genes in different species are function-divergent, whereas tissue-specific expression is related within species. In *L. hypoglauca*, only *LH4CL2* is more abundant in buds than in leaves. In other species, particularly *L. macranthoides*, the transcripts of *LMC4H2* are less abundant in buds than in leaves, whereas *LM4CL1* and *LM4CL2* are more abundant in buds. The activity of C4H in buds of the three species is lower than that in leaves, whereas 4CL does not show significant difference between buds and leaves (Fig. 5). Although transcripts of C4H and 4CL orthologous in buds of various species diverged (Supplement Fig. 2), their activities are not significantly different (Fig. 5).

3.8. CHS, CHI, and FNS gene family

Gene expression analysis revealed that the transcripts of *LJCHS1*, *LJCHI2*, *LJFNS1*, and *LJFNS2* are more abundant in buds than in leaves. The difference in transcript level of CHS, CHI, and FNS orthologous in

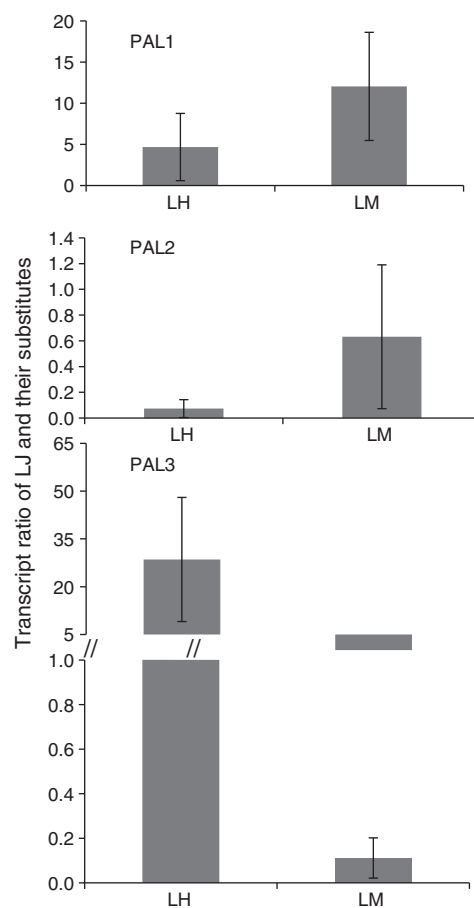


Fig. 6. Fold changes of PAL gene families in buds of *Lonicera japonica* Thunb (LJ), *L. hypoglauca* Miquel (LH), and *L. macranthoides* Hand.-Mazz (LM). The expression level of PAL genes in of *Lonicera japonica* Thunb was arbitrarily set to 1.

various species was analyzed. In *L. hypoglauca*, the transcripts of *LHCHS1* are less abundant in buds than in leaves. In *L. macranthoides*, the transcripts of *LHCHS2*, *LHCHI1*, *LHCHI2*, *LHFNS1*, and *LHFNS2* are more abundant in buds than in leaves (Supplement Fig. 3).

To understand the roles of individual CHS, CHI, and FNS members, comparison was made in terms of the expression of CHS, CHI, and FNS orthologous in buds of various species. Gene expression analysis revealed that the transcripts of *LJFNS2* are higher than their orthologous genes in *L. hypoglauca*, and the transcript level of *LJCHS2*, *LJCHI1*, *LJCHI2*, *LJFNS1*, and *LJFNS2* is lower than their orthologous genes in *L. macranthoides* (Supplement Fig. 4).

3.9. HQT gene family

Hydroxycinnamoyl-CoA quinate: hydroxycinnamoyl transferase (HQT) is an enzyme in chlorogenic acid biosynthesis that exhibits catalysis activity in the esterification of quinic acid with caffeoyl-CoA to generate CGA. Peng et al. (2010) reported that the tissue distribution of *LJHQT1* is in accordance with the pattern of CGA content, based on the RT-PCR results they obtained. The transcripts of two HQTs in buds of *L. japonica* and *L. hypoglauca* have no significant difference in the leaves. The tissue distribution of *LJHQTs* is different in *L. macranthoides*, where both *LMHQT1* and *LMHQT2* in buds are higher than in leaves (Supplement Fig. 5). Meanwhile, the expression of HQT orthologous in buds of various species is not significantly different (Supplement Fig. 6).

4. Discussion

4.1. Organ preferential expression of gene families

For thousands of years, buds and leaves of *L. japonica* and its substitutes have been used as traditional Chinese medicine. The buds are used as Jin-Yin-Hua or Shan-Yin-Hua medicine, whereas the stems and leaves are used as Ren-Dong-Teng medicine. Previous studies have indicated that the active compound content differs among the plant parts (Deng, 2007; Zhao et al., 2010). This study confirmed that the chlorogenic acid and luteolin contents are significantly different between the buds and the leaves of *L. japonica*. Organ preferential expression of *PAL*, *C4H*, *4CL*, *CHS* and *CHI* (Li et al., 2008; Rani et al., 2012; Roslan et al., 2012) is exhibited in the leaves, stem, and roots. *PAL1*, *PAL2*, and *PAL4* are related to tissue-specific lignin synthesis in the leaves of *A. thaliana* (Olsen et al., 2008). Few papers have reported on the gene expression patterns in flowers. In this study, genes expressed in buds and leaves of *L. japonica* were analyzed. However, in the first step of biosynthesis, only the transcribed levels of *LJPAL1*, *LJC4H2*, and *LJ4CL2* were higher in the buds than that in the leaves. The total activity of C4Hs in the buds was lower than that in the leaves, and *PAL* and *4CL* did not change significantly. In the last step, *LJHQTs* did not show significant organ preferential expression, suggesting that *LJPAL1*, *LJC4H2*, and *LJ4CL2* are among the critical genes that regulate CGA content within the organs. The activities of these individual enzymes in *L. japonica* need to be further analyzed. *LJCHS1*, *LJCHI2*, *LJFNS1*, and *LJFNS2* in the last step exhibited bud preferential expression, suggesting that *LJPAL1*, *LJC4H2*, *LJ4CL2*, *LJCHS1*, *LJCHI2*, *LJFNS1*, and *LJFNS2* are among the critical genes regulating the luteolin content of the organs. Therefore, only the first step of biosynthesis controls the CGAs, whereas the two steps control the luteolin content in the bud of *L. japonica*.

In the other two medical species, organ preferential expression of the gene families exhibited slight diversity. The two steps of biosynthesis could regulate the CGAs and luteolin in the bud of *L. macranthoides*. The critical genes include *LMPAL1*, *LM4CL1*, and *LM4CL2* in the first step and *LMHQT1*, *LMHQT2*, *LMCHS2*, *LMCHI1*, *LMCHI2*, *LMFNS1*, and *LMFNS2* in the last step. In *L. hypoglauca*, *LHPAL2*, *LHPAL2*, and *LHCHS1* showed leaf preferential expression. The higher activity of *LHPAL* found in the leaves could be due to the presence of more active compounds in the leaves (Deng et al., 2007).

4.2. Species preferential expression of gene families

Although the three species are recorded in China pharmacopoeia, their active compounds and medicinal usages are diverse (Chu et al., 2011). The expression of orthologs genes differs in every species and could possibly induce diversity of active compound content. Previous reports have shown that *PAL* (Kovacic et al., 2012) and *CHS* (Pierantoni et al., 2010) have species or cultivar preferential expression and activity. In this paper, the transcribed level of orthologous genes related to CGAs and luteolin biosynthesis in the buds of the three medical species was analyzed. Compared with *L. japonica*, *PAL1*, *4CL1*, and *4CL2* orthologs in the first step and *CHS2*, *CHI1*, *CHI2*, *FNS1*, and *FNS2* orthologs in the last step showed preferential expression in the bud of *L. macranthoides*. For *L. macranthoides*, *PAL3* and *C4H2* orthologs exhibited preferential expression in the bud of *L. japonica*, whereas in *L. hypoglauca*, *PAL2*, *4CL2*, and *FNS2* orthologs showed preferential expression in the buds of *L. japonica*. However, the activity of *PAL*, *C4H*, and *4CL* revealed no significant change in the buds of the three medical species (Fig. 5), similar to the CGA content (Fig. 2). The content of luteoloside in the bud of *L. hypoglauca* was lower than that in *L. japonica* (Fig. 2), suggesting that *FNS2* orthologs could control luteoloside content in the buds of *L. japonica* and *L. hypoglauca*.

4.3. Gene and functional diversity of chlorogenic acid and luteolin biosyntheses

How gene duplication and divergence contribute to functional diversity has been of intense interest, but experimental evidence is limited. Based on the phylogenetic analysis, *PAL*, *4CL*, *CHS*, and *CHI* paralogs were used to predict functional diversity. *HQT* paralogs could be the same function. According to the results of gene expression analysis, only *HQT* orthologs and paralogs have a similarly expressed pattern in different tissues among different species. This finding suggests that the complexity of orthologs and paralogs in the first step of CGA biosynthesis and the two steps in luteolin biosynthesis could induce functional diversity and chemical compound difference.

5. Conclusion

Fourteen genes in six gene families of CGAs, as well as luteolin biosynthesis in three medicinal plant species, were studied. Twelve genes in *L. japonica* and all the genes in *L. hypoglauca* and *L. macranthoides* were reported for the first time in this work. Results revealed that in biosynthesis, only the first step controls the CGAs, whereas both steps control luteolin in the bud of *L. japonica*. The expression of *LJFNS2* exhibits positive correlation with luteolin levels in *L. japonica*. In addition, the higher activity of *LHPAL* may be related to the higher content of active compounds in the leaves of *L. hypoglauca*. The different usages of the three species of *L. japonica* and their substitutes were comprehensively studied according to expression diversity of orthologs and paralogs in metabolic pathways.

Acknowledgments

This work was supported by the National Natural Science Foundation of China (grant no. (81001605)). We thank Prof. Jun Yu for giving a revise to this paper.

Appendix A. Supplementary data

Supplementary data to this article can be found online at <http://dx.doi.org/10.1016/j.gene.2012.09.051>.

References

- Adato, A., et al., 2009. Fruit-surface flavonoid accumulation in tomato is controlled by a SIMYB12-regulated transcriptional network. *PLoS Genet.* 5, e1000777.
- Altschul, S.F., et al., 1997. Gapped BLAST and PSI-BLAST: a new generation of protein database search programs. *Nucleic Acids Res.* 25, 3389–3402.
- Bai, G.B., Peng, X.X., Li, W.D., Wang, W.Q., 2010. Cloning and characterization of a cDNA coding a hydroxycinnamoyl-CoA quinate hydroxycinnamoyl transferase involved in chlorogenic acid biosynthesis in *Lonicera japonica*. *Planta Med.* 76, 1921–1926.
- Bjellqvist, B., Basse, B., Olsen, E., Celis, J.E., 1994. Reference points for comparisons of two-dimensional maps of proteins from different human cell types defined in a pH scale where isoelectric points correlate with polypeptide compositions. *Electrophoresis* 15, 529–539.
- Brueske, C.H., 1980. Phenylalanine ammonia lyase activity in tomato roots infected and resistant to the root-knot nematode, *Meloidogyne incognita*. *Physiol. Plant Pathol.* 16, 409–414.
- Burge, C.B., Karlin, S., 1998. Finding the genes in genomic DNA. *Curr. Opin. Struct. Biol.* 8, 346–354.
- Cao, S., Hu, Z., Zheng, Y., Lu, B., 2010. Effect of BTH on anthocyanin content and activities of related enzymes in strawberry after harvest. *J. Agric. Food Chem.* 58, 5801–5805.
- Chen, Q.Z., Lin, R.C., Wang, G.L., Li, F.M., 2010. Studies on chemical constituents of the extract of *Lonicera japonica*. *Zhong Yao Cai* 33, 920–922.
- Chinese Pharmacopoeia Commission, 2010. The Pharmacopoeia of the People's Republic of China, 2010 ed. China Medical Science Press, Beijing, pp. 205–206.
- Chu, C., Liu, H.J., Qi, L.W., Liu, E.H., Li, P., 2011. Combination of normal light and fluorescence microscopy for authentication of five *Lonicera* species flower buds. *Microsc. Res. Tech.* 74, 133–141.
- Clifford, M.N., 1999. Chlorogenic acids and other cinnamates—nature, occurrence and dietary burden. *J. Sci. Food Agric.* 79, 362–372.
- Deng, L.J., Zhao, X.Z., Huang, S.M., Huang, S.J., Ou, S.S., Wu, Q.H., 2007. Chlorogenic acid content determination in branches, leaves and flowers of *Lonicera japonica* from Xincheng County. *J. Guangxi Agric.* 22, 34–36.

- Emanuelsson, O., Brunak, S., von Heijne, G., Nielsen, H., 2007. Locating proteins in the cell using TargetP, SignalP and related tools. *Nat. Protoc.* 2, 953–971.
- Ferrer, J.L., Austin, M.B., Stewart, C., Noel, J.P., 2008. Structure and function of enzymes involved in the biosynthesis of phenylpropanoids. *Plant Physiol. Biochem.* 46, 356–370.
- Fraser, C.M., Chapple, C., 2011. The phenylpropanoid pathway in Arabidopsis. *Arabidopsis Book* 9, e0152.
- Hittinger, C.T., Carroll, S.B., 2007. Gene duplication and the adaptive evolution of a classic genetic switch. *Nature* 449, 677–681.
- Kashmir, S., Sanjay, K., Arti, R., Ashu, G., Paramvir, S., 2009. Phenylalanine ammonia-lyase (PAL) and cinnamate 4-hydroxylase (C4H) and catechins (flavan-3-ols) accumulation in tea. *Funct. Integr. Genomics* 9 (1), 125–134.
- Kovacik, J., Klejdus, B., Repčáková, K., 2012. Phenolic metabolites in carnivorous plants: inter-specific comparison and physiological studies. *Plant Physiol. Biochem.* 52, 21–27.
- Ku, S., et al., 2009. Effect of *Lonicerae* Flos extracts on reflux esophagitis with antioxidant activity. *World J. Gastroenterol.* 15, 4799–4805.
- Kumar, S., Dudley, J., Nei, M., Tamura, K., 2008. MEGA: a biologist-centric software for evolutionary analysis of DNA and protein sequences. *Brief. Bioinform.* 9, 299–306.
- Li, Y., Ogita, S., Keya, C.A., Ashihara, H., 2008. Expression of caffeine biosynthesis genes in tea (*Camellia sinensis*). *Z. Naturforsch. C* 63, 267–270.
- Lim, D., Cho, H., Kim, J., Nho, C., Lee, K., Park, J., 2012. Luteolin decreases IGF-II production and downregulates insulin-like growth factor-I receptor signaling in HT-29 human colon cancer cells. *BMC Gastroenterol.* 12, 9.
- Lowry, O.H., Rosebrough, N.R., Farr, A.L., 1951. Protein measurement with the Folin-phenol reagent. *J. Biol. Chem.* 193, 265–269.
- Lu, S., Zhou, Y., Li, L., Chiang, V., 2006. Distinct roles of cinnamate 4-hydroxylase genes in populus. *Plant Cell Physiol.* 47, 905–914.
- Molgaard, P., Ravn, H., 1988. Evolutionary aspects of caffeoyl ester distribution in dicotyledons. *Phytochemistry* 27, 2411–2421.
- Olsen, K.M., Lea, U.S., Slimestad, R., Verheul, M., Lillo, C., 2008. Differential expression of four Arabidopsis PAL genes; PAL1 and PAL2 have functional specialization in abiotic environmental-triggered flavonoid synthesis. *J. Plant Physiol.* 165, 1491–1499.
- Peng, X., Li, W., Wang, W., Bai, G., 2010. Cloning and characterization of a cDNA coding a hydroxycinnamoyl-CoA quinate hydroxycinnamoyl transferase involved in chlorogenic acid biosynthesis in *Lonicera japonica*. *Planta Med.* 76, 1921–1926.
- Pierantoni, L., Dondini, L., De Franceschi, P., Musacchi, S., Winkel, B.S., Sansavini, S., 2010. Mapping of an anthocyanin-regulating MYB transcription factor and its expression in red and green pear. *Pyrus communis*. *Plant Physiol. Biochem.* 48, 1020–1026.
- Quevillon, E., et al., 2005. InterProScan: protein domains identifier. *Nucleic Acids Res.* 33, W116–W120.
- Raes, J., Rohde, A., Christensen, J.H., Van de Peer, Y., Boerjan, W., 2003. Genome-wide characterization of the lignification toolbox in Arabidopsis. *Plant Physiol.* 133, 1051–1071.
- Rani, A., Singh, K., Ahuja, P.S., Kumar, S., 2012. Molecular regulation of catechins biosynthesis in tea [*Camellia sinensis* (L.) O. Kuntze]. *Gene* 495, 205–210.
- Roslan, N.D., et al., 2012. Flavonoid biosynthesis genes putatively identified in the aromatic plant *Polygonum minus* via expressed sequences tag (EST) analysis. *Int. J. Mol. Sci.* 13, 2692–2706.
- Rozen, S., Skaletsky, H., 2000. Primer3 on the WWW for general users and for biologist programmers. *Methods Mol. Biol.* 132, 365–386.
- Shang, X., Pan, H., Li, M., Miao, X., Ding, H., 2011. *Lonicera japonica* Thunb.: ethnopharmacology, phytochemistry and pharmacology of an important traditional Chinese medicine. *J. Ethnopharmacol.* 138, 1–21.
- Tamura, K., Peterson, D., Peterson, N., Stecher, G., Nei, M., Kumar, S., 2011. MEGA5: molecular evolutionary genetics analysis using maximum likelihood, evolutionary distance, and maximum parsimony methods. *Mol. Biol. Evol.* 28, 2731–2739.
- Tatusov, R.L., Koonin, E.V., Lipman, D.J., 1997. A genomic perspective on protein families. *Science* 278, 631–637.
- Thompson, J.D., Higgins, D.G., Gibson, T.J., 1994. CLUSTAL W: improving the sensitivity of progressive multiple sequence alignment through sequence weighting, position-specific gap penalties and weight matrix choice. *Nucleic Acids Res.* 22, 4673–4680.
- Ververidis, F., Trantas, E., Douglas, C., Vollmer, G., Kretzschmar, G., Panopoulos, N., 2007. Biotechnology of flavonoids and other phenylpropanoid-derived natural products. Part I: Chemical diversity, impacts on plant biology and human health. *Biotechnol. J.* 2 (10), 1214–1234.
- Vogt, T., 2010. Phenylpropanoid biosynthesis. *Mol. Plant* 3, 2–20.
- Voo, K.S., Whetten, R.W., O'Malley, D.M., Sederoff, R.R., 1995. 4-Coumarate: coenzyme A ligase from loblolly pine xylem (isolation, characterization, and complementary DNA cloning). *Plant Physiol.* 108, 85–97.
- Yuan, Y., et al., 2012. Genetic variation and metabolic pathway intricacy govern the active compound content and quality of the Chinese medicinal plant *Lonicera japonica* Thunb. *BMC Genomics* 13, 195.
- Zhang, C., et al., 2009. Chemical constituents from stems of *Lonicera japonica*. *Zhongguo Zhong Yao Za Zhi* 34, 3051–3053.
- Zhao, X., Ge, Y., Wang, D., Li, S., Liu, J., Wang, X., 2010. Determination of extracted Chlorogenic acid and Luteolin-7-O-glucoside in Flos *Lonicerae* by HPLC-DAD. *Chin. J. Anal. Lab.* 29s, 77–80.