




Phosphoproteomics reveals conserved exercise-stimulated signaling and AMPK regulation of store-operated calcium entry

Marin E Nelson, Benjamin L Parker, James G Burchfield, Nolan J Hoffman , Elise J Needham, Kristen C Cooke, Timur Naim, Lykke Sylow, Naomi XY Ling, Deanne Francis, Dougall M Norris, Rima Chaudhuri, Jonathan S Oakhill, Erik A Richter , Gordon S Lynch, Jacqueline Stöckli & David E James 

Correction to: *The EMBO Journal* (2019) 38: e102578. DOI 10.15252/embj.2019102578 | Published online 5 August 2019

Shortly after online publication, the authors became aware of labelling issues in Figure 4. During communication with the journal, the authors found an additional labelling error in Figure 3E and also that they had displayed bands with incorrect molecular weight from the acquired Western blots in Figure 3B.

Figure 3B: For figure panels “STIM1 p-S521” and “STIM1 total”, the lower molecular weight bands at ~75 kDa were incorrectly used to depict presence of the STIM1 long isoform for “mouse running”. The corrected figure has been updated with the higher molecular

weight bands from the blots running at ~80 kDa. The quantification of these data is updated in Appendix Figure S4C.

Figure 3E: During the process of assembling the source data, the authors noticed that they had inverted the labelling of the ACC p-S79 and STIM1 p-S257 blots in the figure.

Figure 4A: The labelling “short linker” and “long linker” were inverted in the original figure.

Appendix Figure S4A: The authors noted that the STIM1 p-S521 blot was slightly misaligned.

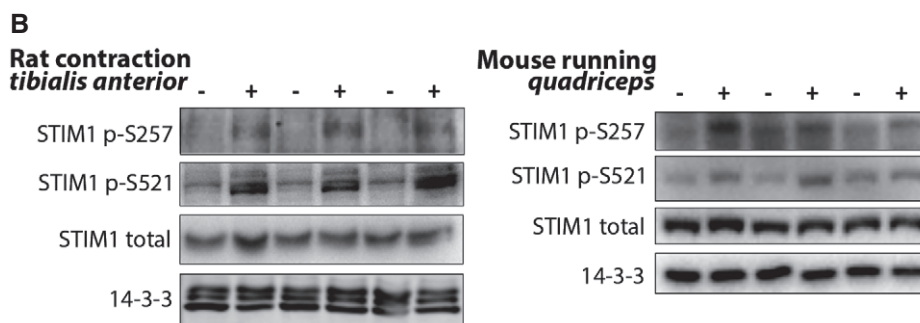


Figure 3B. Original.

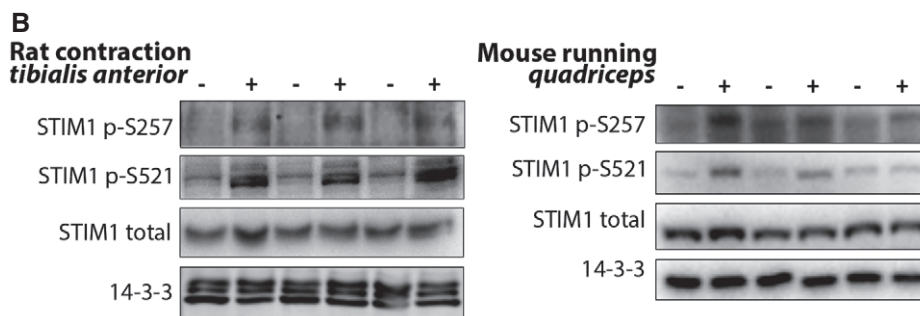


Figure 3B. Updated.

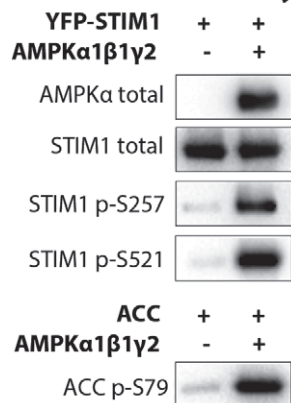
Source data are available online for this figure.

DOI 10.15252/embj.2019104246 | *The EMBO Journal* (2020) 39: e104246

The source data for Figure 3B and 3E is available for download with this notice, and the figures have been corrected. The authors

apologise for their oversight and confirm that the conclusions of the experiments have not changed.

E in vitro kinase assay



E in vitro kinase assay

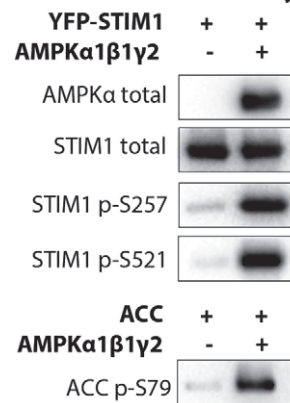


Figure 3E. Original.

Figure 3E. Updated.

Source data are available online for this figure.

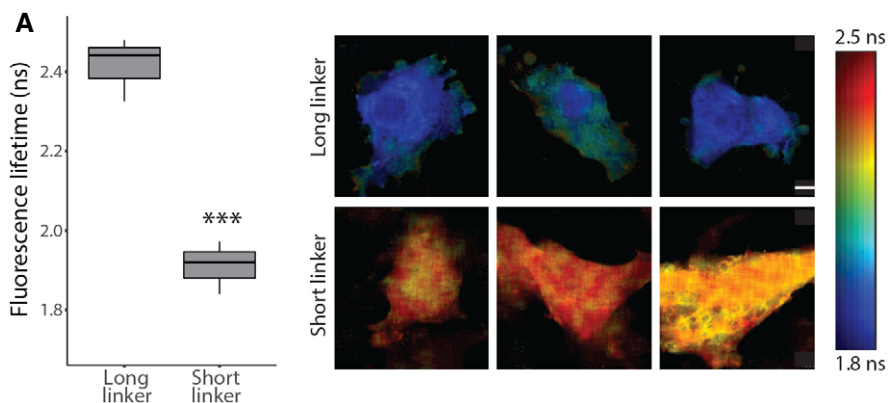


Figure 4A. Original.

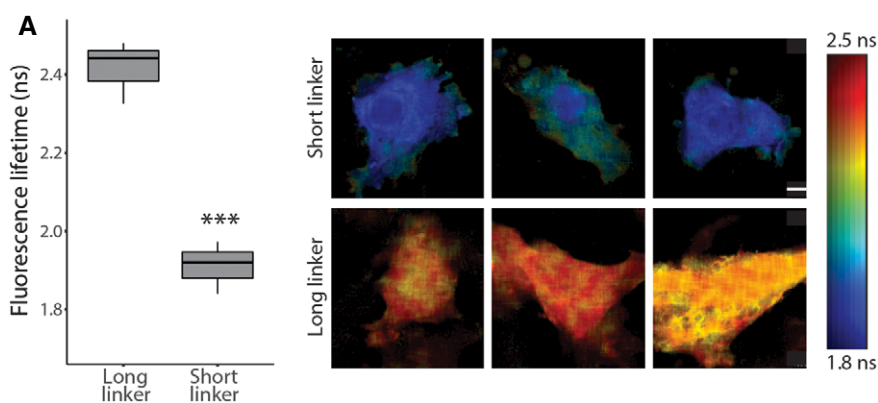
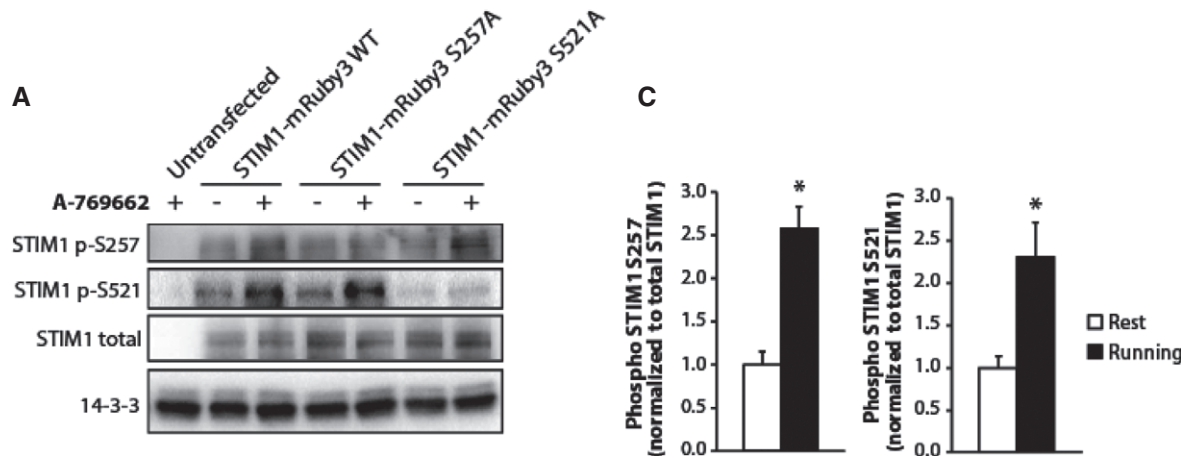
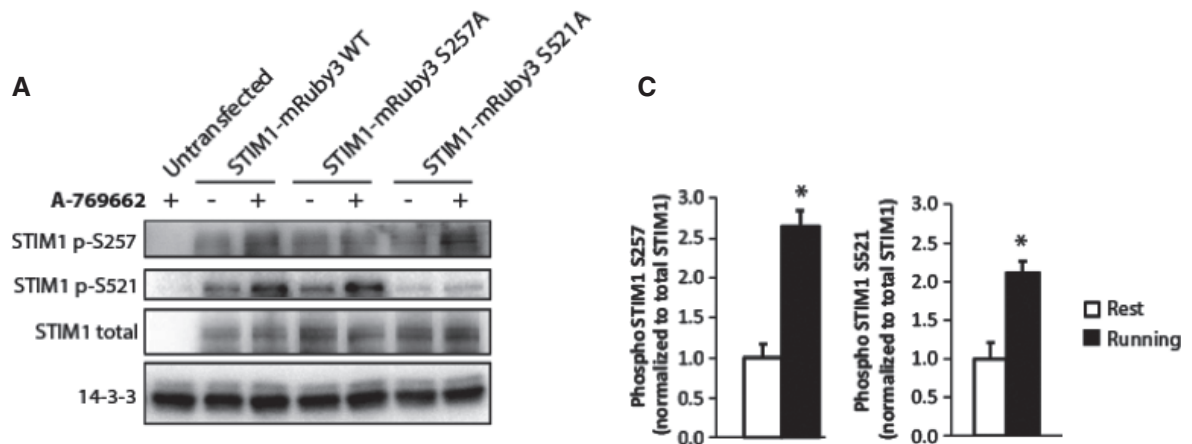


Figure 4A. Updated.



Appendix Figure S4. Original.



Appendix Figure S4. Updated.