

CASE REPORT

Open Access



Foetal onset of *EIF2B* related disorder in two siblings: cerebellar hypoplasia with absent Bergmann glia and severe hypomyelination

Aurélien Trimouille^{1,2}, Florent Marguet³, Fanny Sauvestre⁴, Eulalie Lasseaux¹, Fanny Pelluard⁴, Marie-Laure Martin-Négrier⁴, Claudio Plaisant¹, Caroline Rooryck^{1,2}, Didier Lacombe^{1,2}, Benoît Arveiler^{1,2}, Odile Boespflug-Tanguy⁵, Sophie Naudion¹ and Annie Laquerrière^{3,6*}

Abstract

Bi-allelic pathogenic variants in genes of the EIF2B family are responsible for Childhood Ataxia with Central nervous system Hypomyelination/Vanishing White Matter disease, a progressive neurodegenerative disorder of the central white matter. Only seven molecularly proven cases with antenatal onset have been reported so far. We report for the first time the neuropathological findings obtained from two fetuses harbouring deleterious variants in the *EIF2B5* gene who presented in utero growth retardation and microcephaly with simplified gyral pattern that led to a medical termination of the pregnancy at 27 and 32 weeks of gestation. Neuropathological examination confirmed microcephaly with delayed gyration, periventricular pseudo-cysts and severe cerebellar hypoplasia. Histologically, the cerebellar cortex was immature, the dentate nuclei were fragmented and myelin stains revealed almost no myelination of the infratentorial structures. Bergmann glia was virtually absent associated to a drastic decreased number of mature astrocytes in the cerebellar white matter, multiple nestin-positive immature astrocytes as well as increased numbers of PDGFR α -positive oligodendrocyte precursors. Whole exome sequencing performed in the two fetuses and their parents allowed the identification of two *EIF2B5* compound heterozygous variants in the two fetuses: c.468C > G p.Ile156Met and c.1165G > A p.Val389Met, the parents being heterozygous carriers. These variants are absent in the genome Aggregation Database (gnomAD r2.0.2). Contrary to the variant Ile156Met already described in a patient with CACH syndrome, the variant p.Val389Met is novel and predicted to be deleterious using several softwares. Neuropathological findings further expand the phenotypic spectrum of the disease that very likely occurs during early gestation and may manifest from the second half of pregnancy by a severe impairment of cerebral and cerebellar development.

Keywords: Vanishing white matter disease, Foetal neuropathology, Whole exome sequencing, Diagnosis, Pathophysiology

* Correspondence: annie.laquerriere@chu-rouen.fr

³Normandie Univ, UNIROUEN, INSERM U1245, Rouen University Hospital, Department of Pathology, F76000 Rouen, France

⁶Pathology Laboratory, Pavillon Jacques Delarue, CHR, 1 rue de Germont, 76031 Rouen, Cedex, France

Full list of author information is available at the end of the article



© The Author(s). 2020 **Open Access** This article is licensed under a Creative Commons Attribution 4.0 International License, which permits use, sharing, adaptation, distribution and reproduction in any medium or format, as long as you give appropriate credit to the original author(s) and the source, provide a link to the Creative Commons licence, and indicate if changes were made. The images or other third party material in this article are included in the article's Creative Commons licence, unless indicated otherwise in a credit line to the material. If material is not included in the article's Creative Commons licence and your intended use is not permitted by statutory regulation or exceeds the permitted use, you will need to obtain permission directly from the copyright holder. To view a copy of this licence, visit <http://creativecommons.org/licenses/by/4.0/>. The Creative Commons Public Domain Dedication waiver (<http://creativecommons.org/publicdomain/zero/1.0/>) applies to the data made available in this article, unless otherwise stated in a credit line to the data.

Introduction

Childhood Ataxia with Central nervous system Hypomyelination/Vanishing White Matter disease (VWMD) (MIM#603896) is one of the most prevalent autosomal recessive lethal leukodystrophy. VWMD was initially described in children who presented with normal early neurological development followed by progressive decline with episodes of rapid deterioration caused by trauma, acute fright or fever associated with typical magnetic resonance imaging (MRI) features [1]. It is caused by germline deleterious variants in any of the genes encoding the five subunits of the evolutionary conserved eukaryotic initiation factor 2 eIF2B, a protein complex involved in the regulation of mRNA translation [2]. Currently, a large phenotypic variation has been reported from antenatal life to late adulthood, the severity of the prognosis being inversely correlated with age of onset [3]. In infants, children and adults, the morphological hallmarks associate white matter rarefaction with cystic degeneration without any or with only subtle microglial reaction, decreased number of mature oligodendrocytes often displaying a foamy pattern and poor reactive gliosis with the presence of dysmorphic and immature astrocytes that makes the disease fall into the group of astrocytopathies [4]. We report herein for the first time autopsy findings in two foetal siblings interrupted at 27 and 32 weeks of gestation (WG) for microcephaly with cerebellar hypoplasia, which harbored two compound heterozygous pathogenic variants in the *EIF2B5* gene, one of the two being novel.

Case presentation

In a thirty-seven-year-old woman, gravida 2 para 0, routine ultrasound (US) performed at 22 WG revealed severe intrauterine growth restriction and cerebral anomalies consisting of microcephaly, vermis hypoplasia and bilateral hypoechoic zones close to the anterior horns of the lateral ventricles for which a diagnosis of porencephaly was suggested. Due to unfavorable prognosis, a medical termination of the pregnancy (TOP) was achieved at 27 WG. Four months later, the parents conceived a second child. At 22 WG, foetal growth parameters were within the normal range, but US examination at 30 WG showed severe growth restriction and recurrence of the brain lesions leading to TOP at 32 WG. Array-CGH was normal in both fetuses, as was the karyotype (46, XX and 46, XY respectively). The unrelated parents had no personal or familial medical history.

A complete autopsy was carried out in both fetuses according to standardized protocols with the informed written consent of the parents in accordance with the French law and after approval by our local ethical committee (Supplementary material S1 Methods with additional references). Foetal weights were below the 3rd

percentile. Neither craniofacial particularities nor macroscopical and histological visceral abnormalities were noted. In the first foetus, histological examination of the ovaries did not reveal any ovarian dysgenesis and the density of primordial follicles appeared to be similar to what observed in two 27 WG control ovaries. Brain weight was 88 g in the first foetus and 153 g in the second foetus. Infratentorial weights were 4.3 g and 6 g, corresponding to a developmental age of 22 and 26 WG respectively, in favour of microcephaly with cerebellar hypoplasia. In the second foetus, brain gyration was delayed with almost no secondary sulci (Fig. 1a and b). Cerebellar foliation was also delayed, the tertiary folia being still absent. On coronal sections, periventricular pseudo-cysts were observed within the ganglionic eminences close to the caudate nuclei (Fig. 1c). Cerebellar abnormalities consisted in poorly convoluted dentate nuclei and a five-layered cerebellar cortex in the two fetuses (Fig. 1d). Luxol-phloxin stains were entirely negative in the brainstem of the second foetus (Fig. 1e) compared with an age-matched control brain (Fig. 1f). No pycnotic or foamy oligodendrocytes were observed within and around the dentate nuclei (Fig. 1g and h). At the supratentorial level, no gaps in the glia limitans were observed. The cortical plate was depleted in neurons mainly in layer III but no microcolumnar dysplasia was noted, arguing against a disruption of cortical plate cytoarchitecture which could result from impaired migration or neuron positioning. In the second case, the pyramidal morphology of neurons in layers III and V was not apparent, indicative of immaturity as pyramidal morphology is easily recognizable 26 WG onward. In the second case, histological examination of the eyes was normal using routine stainings.

Vimentin immunohistochemistry did not make it possible to find radial glia or glia limitans abnormalities, and GFAP immunolabelings revealed some accumulation of reactive astrocytes around the periventricular cavities. But whatever the location, i.e., surrounding the cavities or at a distance from them, astrocyte morphology was similar. No differences in shape or number of GFAP-positive Muller cells between the affected foetus and an age matched control eye were observed. Conversely, it displayed a decreased number of mature astrocytes in the cerebellar white matter. Their severely altered morphology consisted of underdeveloped processes compared with an age-matched control (Fig. 2a and b). Their cytoplasm exhibited no alpha-B crystallin accumulation. Immunolabelings using the intermediate filament nestin, a marker of radial glial cells confirmed the presence of numerous immature astrocytes by comparison with the control brain (Fig. 2c and d). Even though Olig2 immunolabeling revealed no significant differences pre-oligodendrocyte number, an increased

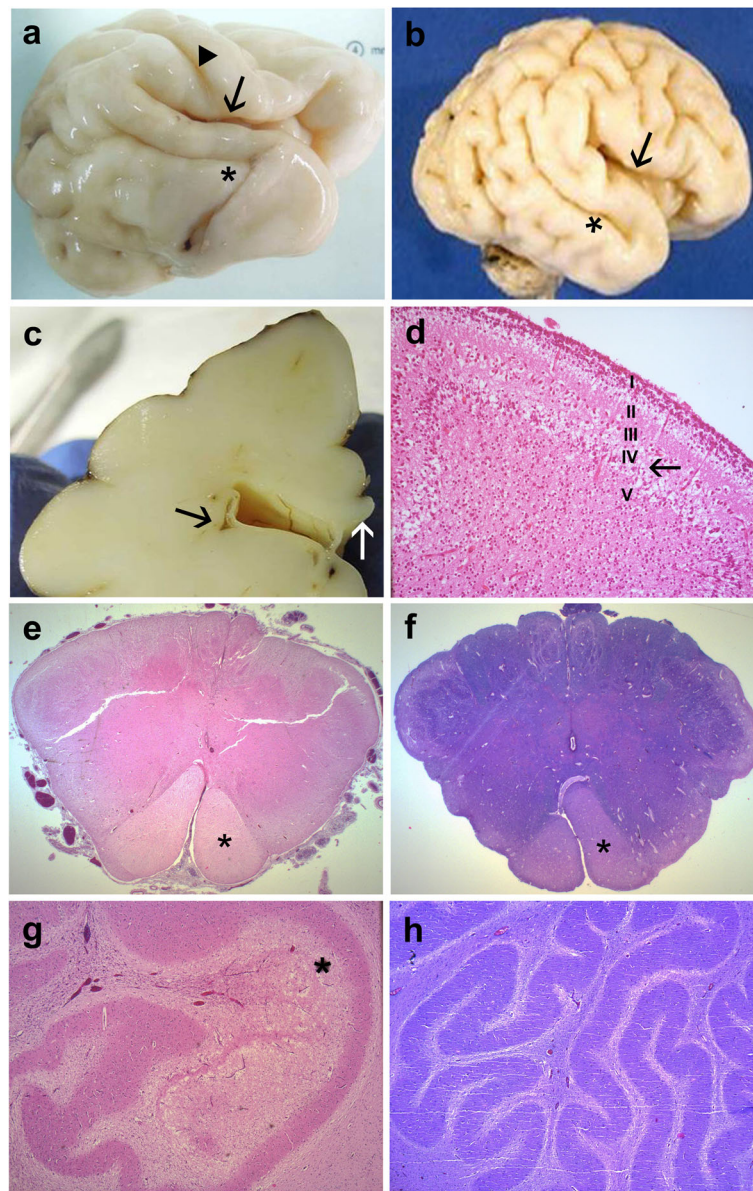


Fig. 1 Main macroscopic and histological findings of *EIF2B5* mutated foetal brain aged 32 WG. **a** External view of the right hemisphere of the second foetus showing almost closed Sylvian fissure (arrow), absent postcentral gyrus whereas the central fissure is present (arrowhead) and dysmorphic superior temporal gyrus (asterisk) with poor secondary sulcation. **b** compared with an age-matched control brain where the Sylvian fissure is still open (arrow), with all primary and secondary sulci and gyri already formed, in particular the superior temporal sulcus (asterisk). **c** With on coronal section passing through the diencephalon where several small-sized periventricular pseudo-cysts are observed (black arrow) whereas the corpus callosum is normal (white arrow). **d** Histology of the cerebellar cortex displaying an abnormal five-layered immature cortex with abnormal persistence of the lamina dissecans (transient layer IV, arrow) corresponding to a developmental stage of 24 WG [OM \times 100]. **e** Luxol- phloxin stain of the medulla oblongata just above the decussation of pyramids (asterisk) displaying no myelin in the second foetus [OM \times 16]. **f** Compared with an age matched control, where all fascicles are myelinated, except corticospinal tracts (asterisk) which begin to be myelinated [OM \times 16]. **g** Absent myelination around the poorly convoluted dentate nucleus and vacuolization of the cerebellar white matter inside the dentate nucleus (asterisk) [OM \times 50]. **h** Compared with the control where the dentate nucleus is normally convoluted and surrounded by myelinated white matter [OM \times 50]

number of PDGFR α -positive oligodendrocyte precursors was observed (Fig. 2e and f). Bergmann glia was virtually absent (Fig. 2g and h). Calbindin immunoreactivity was weak in Purkinje cells, the density of which was reduced

with almost no associated immunolabelling of Golgi II neurons and stellate cells (Fig. 2i and j).

Whole Exome Sequencing (WES) (detailed procedures in Supplementary material S1 Methods with additional

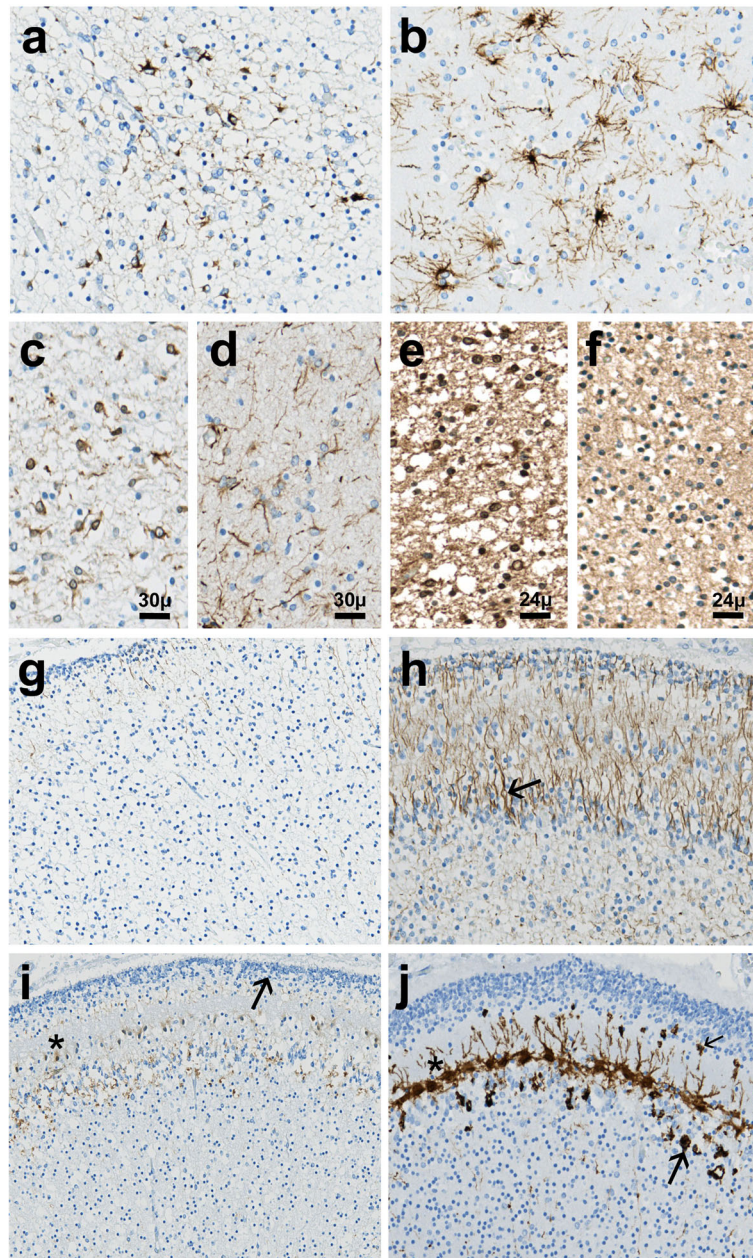


Fig. 2 Immunohistochemical findings in the cerebellum of the second affected foetus. **a** GFAP immunolabeling of the cerebellar white matter showing immature astrocytes possessing coarse or thin and short cell processes [OM \times 400]. **b** Contrary to the control cerebellar white matter which contains numerous mature astrocytes with multiple fine processes [OM \times 400]. **c** Nestin immunostaining demonstrating overexpression of this intermediate filament in immature astrocytic cell somata [OM \times 400]. **d** Contrary to control cerebellar white matter in which nestin expression is mainly restricted to some astrocytic processes [OM \times 400]. **e** Intense PDGFR α immunoreactivity of the oligodendrocyte precursors in the patient's cerebellar white matter [OM \times 400]. **f** Contrasting with almost absent PDGFR α expression in the control cerebellar white matter [OM \times 400]. **g** Virtually absent GFAP-immunoreactivity of the Bergmann glia in the patient's cerebellar cortex [OM \times 200]. **h** Compared with the control cerebellar cortex in which Bergmann cells are located adjacent to Purkinje neurons (arrow), observed throughout the molecular layer up to the transient external granular cell layer [OM \times 200]. **i** Patient's cerebellar cortex exhibiting weak calbindin immunoreactivity in the small immature and dysmorphic Purkinje cells devoid of apical dendritic arborizations (asterisk), forming a discontinuous layer [OM \times 100]. **j** Whereas in control cerebellum, Purkinje cell somata and dendritic trees (asterisk) are strongly calbindin-immunoreactive as are stellate cells (thin arrow) and Golgi II neurons (thick arrow) [OM \times 100]. OM: original magnification

references and S2 Missense variant considered in this study), allowed for the identification of two compound heterozygous missense variants in the *EIF2B5* gene (NM_003907.2) in the two fetuses: c.468C > G p.Ile156Met and c.1165G > A p.Val389Met. Each parent was heterozygous for one of the two variants which are absent in the GnomAD, ESP and in the dbSNP databases. Contrary to the deleterious p.Ile156Met variant which has already been reported in a patient with VWMD [5], the p.Val389Met is novel. This variant has a CADD score of 29.6 and is predicted as damaging using SIFT, Mutation Taster and Polyphen-2 prediction tools [6]. No deleterious variants were found in the other currently known genes involved in other leukodystrophies.

Discussion and conclusion

To date, only seven *EIF2B* mutated patients from four unrelated families affected by congenital form of VWMD with antenatal onset have been reported [3, 7]. Antenatal symptoms consisted in severe growth restriction, oligohydramnios and decreased foetal movements or arthrogryposis. Microcephaly was present at birth in one neonate whereas progressive cerebellar atrophy and delayed gyration appeared later on MRI in all cases. In some patients with early disease onset, involvement of other organs has been reported such as hepatosplenomegaly, pancreatic abnormalities, kidney hypoplasia, ovary dysgenesis resulting in premature ovarian failure and cataracts [8]. Intriguingly, no visceral lesions were identified in the two fetuses at autopsy. Furthermore, no cataracts were present and GFAP immunohistochemistry did not reveal any lesion of Muller glia. Neuropathological examination performed in two affected infants with antenatal onset aged 8 and 10 months disclosed severe white matter loss in the cerebral hemispheres, pons, cerebellum and spinal cord with a diffuse decrease in oligodendrocyte number and no reactive gliosis. As in our cases, periventricular pseudo-cysts were reported [8, 9]. In a neuropathological review of affected children by Bugiani et al. in 2018, white matter rarefaction usually appears after birth but cystic degeneration of the deep white matter appears later, contrary to our cases in which cavitated lesions were present from the second trimester [10]. Histologically, an increased number of oligodendrocytes in the hemispheric white matter despite myelin paucity has been reported in children's or adult brains [11] conversely to infants' brains in which mature oligodendrocyte numbers appear to be normal, a finding that could not be confirmed in both fetuses as mature, myelinating oligodendrocytes are mostly produced 30 WG onward. Nevertheless, immunohistochemical studies revealed that at 32 WG the cerebellar white matter mainly contained oligodendrocyte precursors instead of maturing oligodendrocytes, resulting rather from delayed

than defective oligodendrocyte maturation, in so far as normal numbers of mature oligodendrocytes have been reported from birth to childhood [4, 9, 10]. Immunohistochemical analyses also revealed severe astrocytic lesions in the cerebellar white matter. Dysmorphic astrocytes presented severely altered morphologies consisting in smaller size, thin or coarse and short processes. Moreover, they still expressed nestin, indicating that they remained at an astroglial progenitor stage, as previously shown in a mouse model by Dooves et al. [12, 13]. Such alterations have also been recently described using patient-derived induced pluripotent stem cells (iPSCs). VWMD iPSCs-derived astrocytes expressed nestin as in the present cases, and the mean length of the longest processes was diminished by a factor of 2. Astrocytes also overexpressed alpha-B-crystallin contrary to foetal astrocytes in which no accumulation was visualized, an event that probably occurs after birth [4, 14]. Besides, it has been shown in several previous studies that astrocytes influence oligodendrocyte differentiation and maturation. In a recent study on human and mouse VWM iPSCs, Leferink et al. demonstrated that the white matter astrocytic subpopulation is selectively vulnerable to VWM mutations and that oligodendrocyte precursor cell maturation is inhibited by VWM astrocytes [15]. These findings very likely explain the overrepresentation of PDGFR α -positive oligodendrocyte precursors observed in our cases, resulting from impaired astrocyte differentiation and functioning. Moreover, it has been shown that in older VWMD affected patients, Bergmann glial somata are translocated to the molecular layer whereas they should be located close to Purkinje cells, this translocation representing a hallmark of VWMD for Dooves et al. [13, 16]. This disease marker has also been reported in a spontaneous mutant mouse in the *Eif2b5* gene called the "toy mouse" [17]. In the two fetuses, virtually absent Bergmann glia somata and processes suggested a defect of Bergmann glia development and/or maintenance from early stages of gestation. Even if a specific granular neuron loss could not be evaluated in our cases as these cells are mainly generated from the 30th WG to 13 post-natal months, the transient external granular cell layer as well as Purkinje cell and internal granular cell layers were poorly developed with almost absent stellate and Golgi II cells, suggesting that *EIF2B5* is not only required for astrocyte and oligodendrocyte generation and differentiation [18] but also for the production, migration and survival of cerebellar neurons resulting in cerebellar hypoplasia.

More than 80 different pathogenic amino acid changes of *EIF2B5* on 67 different positions have been reported in patients with VWMD (Fig. 3a) according to the HGMD Pro [7] and Clinvar databases [19] (Supplementary information S2). The average normalized Consurf

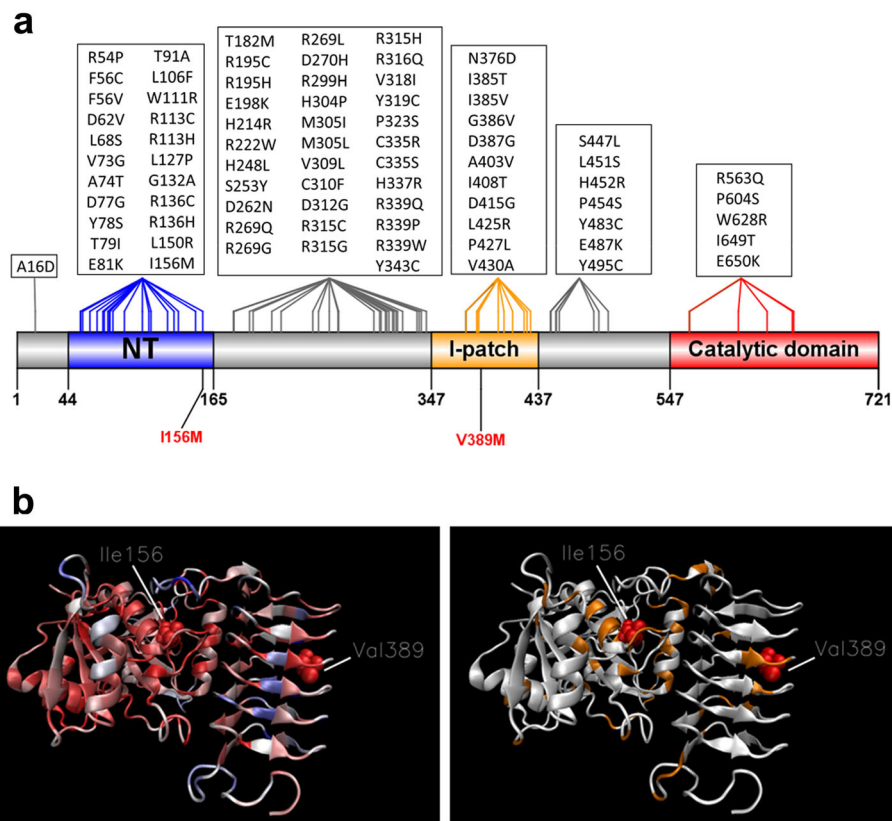


Fig. 3 Molecular findings in EIF2B related disorders. **a** Schematic representation of the previously reported deleterious missense variants in the literature, and those identified in our cases (in red). **b** 3D Model of EIF2B5 protein. Left: Consurf score of residues (red: conserved; blue: not conserved). p.156 and p.389 are shown with Van der Waals representation. Right: Positions of the pathogenic variants (yellow)

conservation score on 150 species of the amino acids affected by pathogenic variants is $-0,434$, that means that mutated residues are more conserved than other EIF2B5 residues. However, as previously reported, the range of scores (min -1421 , max 1563) indicates that several mutated residues are not conserved [16, 20]. EIF2B5 variants are located across various domains of the protein with no clear hotspot. Consurf analysis shows that the p.Ile156 and p.Val389 amino acids which belong to different domains are conserved, with scores of -0.918 and -1.069 respectively (Fig. 3b). Concerning the p.Ile156 amino-acid, even if this position may be occupied depending on species by an Isoleucine or a Valine, two very similar hydrophobic amino acids (Grantham score: 29), the p.Ile156 may be considered as conserved. Besides, genotype-phenotype correlation studies have shown that in EIF2B related disorders, the severity of the disease directly depends on the nature of the EIF2B5 deleterious variants [21]. From these observations, it could be speculated that the disease severity observed in our foetal cases may be due to a specific effect of the two variants, especially the newly described p.Val389Met variant. But one cannot exclude that the extremely

severe phenotype observed in our two siblings may be related to the impact of not yet identified modifier genes or of critical post-transcriptional regulators such as miRNAs. It could also be hypothesized that additional variants in other genes not detected using WES or random developmental processes involving other cellular pathways could be responsible for the phenotypic severity.

In conclusion, neuropathology findings together molecular data reported here further expand the phenotypic spectrum of VWMD which may occur early during gestation and may manifest from the second part of the pregnancy by defective Bergmann glia responsible for severe cerebellar hypoplasia.

Supplementary information

Supplementary information accompanies this paper at <https://doi.org/10.1186/s40478-020-00929-2>.

Additional file 1.

Additional file 2.

Abbreviations

iPSCs: Induced pluripotent stem cells; MRI: Magnetic resonance imaging; NGS: Next-Generation Sequencing; TOP: Termination of the pregnancy;

US: Ultrasound; VWM: Vanishing white matter; VWMD: Vanishing white matter disease; WES: Whole-Exome Sequencing; WG: Weeks of gestation

Authors' contributions

AL and AT designed the study and wrote the manuscript; FS and FP performed autopsies; FM and AL interpreted neuropathological analyses. MLMN performed DNA extraction from foetal tissues; EL, CP and BA performed WES analyses, CR and SN monitored the pregnancies and provided genetic counseling; DL and OB critically reviewed the manuscript. All authors approved the final version of the manuscript.

Availability of data and materials

All data generated or analyzed during this study are included in this article and its supplementary files.

Ethics approval and consent to participate

Autopsies and genetic analyses were performed after appropriate informed consent was obtained from the parents who provided informed consent for publication.

Competing interests

The authors have no competing interest to declare.

Author details

¹Department of Medical Genetics, Bordeaux University Hospital, Bordeaux, France. ²Bordeaux Univ, INSERM U1211, Bordeaux University Hospital, Bordeaux, France. ³Normandie Univ, UNIROUEN, INSERM U1245, Rouen University Hospital, Department of Pathology, F76000 Rouen, France. ⁴Department of Pathology, Bordeaux University Hospital, Bordeaux, France. ⁵INSERM UMR1141 Paris Diderot University, APHP Child neurology and Metabolic Department, Reference Centre for Leukodystrophies (LEUKOFRANCE –ERN-RND)– Robert-Debré hospital, Paris, France. ⁶Pathology Laboratory, Pavillon Jacques Delarue,CHR, 1 rue de Germont, 76031 Rouen, Cedex, France.

Received: 24 February 2020 Accepted: 3 April 2020

Published online: 15 April 2020

References

- Van der Knaap MS, Barth PG, Gabreëls FJ, Franzoni E, Begeer JH, Stroink H et al (1997) A new leukoencephalopathy with vanishing white matter. *Neurology*. 48:845–55. <https://doi.org/10.1212/wnl.48.4.845>
- Leegwater PA, Vermeulen G, Könst AA, Naidu S, Mulders J, Visser A et al (2001) Subunits of the translation initiation factor eIF2B are mutant in leukoencephalopathy with vanishing white matter. *Nat Genet* 29:383–388. <https://doi.org/10.1038/ng764>
- Van der Lei HDW, van Berkel CGM, van Wieringen WN, Brenner C, Feigenbaum A, Mercimek-Mahmutoglu S et al (2010) Genotype-phenotype correlation in vanishing white matter disease. *Neurology*. 75:1555–1559. <https://doi.org/10.1212/WNL.0b013e3181f962ae>
- Bugiani M, Boor I, van Kollenburg B, Postma N, Polder E, van Berkel C et al (2011) Defective glial maturation in vanishing white matter disease. *J Neuropathol Exp Neurol* 70:69–82. <https://doi.org/10.1097/NEN.0b013e318203ae74>
- Pronk JC, van Kollenburg B, Scheper GC, van der Knaap MS (2006) Vanishing white matter disease: a review with focus on its genetics. *Ment Retard Dev Disabil Res Rev* 12:123–128. <https://doi.org/10.1002/mrdd.20104>
- Kircher M, Witten DM, Jain P, O'Roak BJ, Cooper GM, Shendure J (2014) A general framework for estimating the relative pathogenicity of human genetic variants. *Nat Genet* 46:310–315. <https://doi.org/10.1038/ng.2892>
- Stenson PD, Ball EV, Mort M, Phillips AD, Shiel JA, Thomas NST et al (2003) Human gene mutation database (HGMD®): 2003 update: HGMD 2003 UPDATE. *Hum Mutat* 21:577–581. <https://doi.org/10.1002/humu.10212>
- Van der Knaap MS, van Berkel CGM, Herms J, van Coster R, Baethmann M, Naidu S et al (2003) eIF2B-related disorders: antenatal onset and involvement of multiple organs. *Am J Hum Genet* 73:1199–1207. <https://doi.org/10.1086/379524>
- Song H, Haeri S, Vogel H, van der Knaap M, Van Haren K (2017) Postmortem whole exome sequencing identifies novel EIF2B3 mutation with prenatal phenotype in 2 siblings. *J Child Neurol* 32:867–870. <https://doi.org/10.1177/0883073817712588>
- Bugiani M, Vuong C, Breur M, van der Knaap MS (2018) Vanishing white matter: a leukodystrophy due to astrocytic dysfunction. *Brain Pathol* 28:408–421. <https://doi.org/10.1111/bpa.12606>
- Van Haren K, van der Voorn JP, Peterson DR, van der Knaap MS, Powers JM (2004) The life and death of oligodendrocytes in vanishing white matter disease. *J Neuropathol Exp Neurol* 63(6):618–630. <https://doi.org/10.1093/jnen/63.6.618>
- Dooves S, Bugiani M, Postma NL, Polder E, Land N, Horan ST et al (2016) Astrocytes are central in the pathomechanisms of vanishing white matter. *J Clin Invest* 126(4):1512–1524. <https://doi.org/10.1172/JCI83908>
- Dooves S, Bugiani M, Wisse LE, Abbink TEM, van der Knaap MS, Heine VM (2018) Bergmann glia translocation: a new disease marker for vanishing white matter identifies therapeutic effects of Guanabenz treatment. *Neuropathol Appl Neurobiol* 44:391–403. <https://doi.org/10.1111/nan.12411>
- Zhou L, Li P, Chen N et al (2019) Modeling vanishing white matter disease with patient-derived induced pluripotent stem cells reveals astrocytic dysfunction. *CNS Neurosci Ther* 25(6):759–771. <https://doi.org/10.1111/cns.13107>
- Leferink PS, Dooves S, Hillen AEJ, Marjo S, der Knaap V, Heine VM (2018) Astrocyte subtype vulnerability in stem cell models of vanishing white matter. *Ann Neurol* 86(5):780–792. <https://doi.org/10.1002/ana.25585>
- Fogli A, Schiffmann R, Hugendubler L, Combes P, Bertini E, Rodriguez D et al (2004) Decreased guanine nucleotide exchange factor activity in eIF2B-mutated patients. *Eur J Hum Genet* 12:561–566. <https://doi.org/10.1038/sj.ejhg.5201189>
- Terumitsu-Tsujita M, Kitaura H, Miura I et al (2019) Glial pathology in a novel spontaneous mutant mouse of the Eif2b5 gene: a vanishing white matter disease model [published online ahead of print, 2019 Oct 6]. *J Neurochem*. <https://doi.org/10.1111/jnc.14887>
- Dietrich J, Lacagnina M, Gass D, Richfield E, Mayer-Pröschel M, Noble M et al (2005) EIF2B5 mutations compromise GFAP+ astrocyte generation in vanishing white matter leukodystrophy. *Nat Med* 11:277–283. <https://doi.org/10.1038/nm1195>
- Landrum MJ, Lee JM, Benson M, Brown G, Chitipiralla S et al (2016) ClinVar: public archive of interpretations of clinically relevant variants. *Nucleic Acids Res* 44:D862–D868. <https://doi.org/10.1093/nar/gkv1222>
- Maletkovic J, Schiffmann R, Gorospe JR, Gordon ES, Mintz M, Hoffman EP et al (2008) Genetic and clinical heterogeneity in eIF2B-related disorder. *J Child Neurol* 23:205–15. <https://doi.org/10.1177/0883073807308705>
- Hamilton EMC, van der Lei HDW, Vermeulen G, Gerver JAM, Lourenço CM, Naidu S et al (2018) Natural history of vanishing white matter: natural history of VWM. *Ann Neurol* 84:274–288. <https://doi.org/10.1002/ana.25287>

Publisher's Note

Springer Nature remains neutral with regard to jurisdictional claims in published maps and institutional affiliations.

Ready to submit your research? Choose BMC and benefit from:

- fast, convenient online submission
- thorough peer review by experienced researchers in your field
- rapid publication on acceptance
- support for research data, including large and complex data types
- gold Open Access which fosters wider collaboration and increased citations
- maximum visibility for your research: over 100M website views per year

At BMC, research is always in progress.

Learn more biomedcentral.com/submissions

