

Research Article

Effects of *BRCA* Germline Mutations on Triple-Negative Breast Cancer Prognosis

Katarzyna Pogoda ¹, Anna Niwińska,¹ Elżbieta Sarnowska,² Dorota Nowakowska,³ Agnieszka Jagiełło-Gruszczyńska,¹ Janusz Siedlecki,² and Zbigniew Nowecki¹

¹Department of Breast Cancer and Reconstructive Surgery, Maria Skłodowska-Curie Institute–Oncology Center, Warsaw, Poland

²Department of Molecular and Translational Oncology, Maria Skłodowska-Curie Institute–Oncology Center, Warsaw, Poland

³Genetic Counseling Unit, Cancer Prevention Center, Maria Skłodowska-Curie Institute–Oncology Center, Warsaw, Poland

Correspondence should be addressed to Katarzyna Pogoda; katarzyna.pogoda@coi.pl

Received 5 October 2019; Revised 5 December 2019; Accepted 13 December 2019; Published 27 January 2020

Guest Editor: Angela Toss

Copyright © 2020 Katarzyna Pogoda et al. This is an open access article distributed under the Creative Commons Attribution License, which permits unrestricted use, distribution, and reproduction in any medium, provided the original work is properly cited.

Germline *BRCA1* and *BRCA2* mutations confer an increased lifetime risk for breast cancer and ovarian cancer. Several studies have investigated prognosis among *BRCA1/2* mutation carriers and noncarriers, but the prognostic impact on outcomes of breast cancer patients has not been determined. The aim of this study was to determine the prognosis of TNBC patients with and without *BRCA1/2* germline mutation. Among 502 patients diagnosed with TNBC between 2005 and 2008, 124 patients with a strong family history of breast cancer or ovarian cancer as well as TNBC patients diagnosed under 45 years were referred to the Genetic Counseling Unit for genetic counselling and genetic tests. In 30 (24%) of them, the *BRCA1/2* mutation was detected (the most common 5382insC in 18 (60%) patients). The median follow-up of the entire group was 60 months. *BRCA1/2* mutation carriers were statistically significantly younger at TNBC diagnosis compared with nonmutation patients (41 vs 47 years, respectively). Patients with the *BRCA1/2* mutation had smaller tumors (stage I: 47% vs 24.5% in noncarriers), but there was no significant difference in the regional nodal status (58.5–63% with cN0). Contralateral breast cancer developed in 26.5% of *BRCA1/2* mutation carriers and in 14% of noncarriers. Other primary cancers were also slightly more common in *BRCA1/2* mutation carriers (16.5% vs 9.5%). The performed analysis did not show any significant differences between the groups in recurrence-free survival ($p = 0.312$). There was no significant difference between patients with or without *BRCA1/2* mutation as regards overall survival ($p = 0.649$) and the risk of TNBC death ($p = 0.333$). The survival from detection of metastases was similar in two groups ($p = 0.865$). Our study demonstrated that the *BRCA1* mutation does not affect TNBC patients' outcomes.

1. Introduction

BRCA1 and *BRCA2* are tumor suppressor genes involved in DNA damage repair, cell cycle control, gene transcription regulation, and apoptosis. The common germline mutations of the *BRCA1* gene are 5382insC, 185delAG, 3819del5, and 4153delA and of *BRCA2* are 4075delGT and 580del4 [1]. In the western population, about 5% of the breast cancer patients may carry heritable cancer susceptibility gene mutations, with *BRCA1* being the most common mutation [2]. The mutation rate can be higher in Ashkenazi Jews [3, 4]. Interestingly, *BRCA1/2* mutation rates in Asians are lower than those in whites [5].

1.1. Prevalence of Breast/Ovarian Cancer. Germline *BRCA1* and *BRCA2* mutations confer an increased lifetime risk for breast cancer and ovarian cancer. Women with *BRCA1/2* germline mutations have a higher incidence of breast cancer than those without these genetic abnormalities. The cumulative incidence of breast cancer by age 70–80 years in female mutation carriers is 71.4–87% for the *BRCA1* mutation and 77–88% for the *BRCA2* mutation [6–8]. The ovarian cancer risk is 59–65% for the *BRCA1* mutation and 34.5–37% for the *BRCA2* mutation [6, 8]. The high lifetime risk of breast and ovarian cancers in *BRCA1/2* carriers is crucial for counselling, intensive breast and ovarian screening (annual MRI commenced from the age of 25 with

the additional annual mammography from the age of 30, 6-monthly ovarian cancer screening with transvaginal ultrasound, and Ca125 serum measure started at the age of 30), and risk-reducing surgery (bilateral salpingo-oophorectomy and bilateral risk-reducing mastectomy including skin-sparing and nipple-sparing mastectomy) [9, 10].

Compared to *BRCA2* carriers and noncarriers, *BRCA1*-associated breast cancers are often high-grade and poorly differentiated infiltrating ductal carcinoma and are more often triple-negative with higher expressions of cytokeratin 5/6, cyclin E, and p53. Patients with *BRCA1*-associated breast cancers are younger than those with the *BRCA2* mutation and those without mutation [11, 12].

1.2. Prognosis. Several studies have investigated prognosis among *BRCA1/2* mutation carriers and noncarriers, but the prognostic impact on outcomes of breast cancer patients has not been definitely determined. It is controversial whether *BRCA1/2* mutations in breast cancer are associated with poor prognosis. Some studies revealed that *BRCA1/2* mutation carriers with breast cancer had worse overall survival (OS) than noncarriers [13–15], others showed no difference [16–20], and some studies indicated that *BRCA1/2* mutation carriers had better survival than noncarriers [21–23]. Differences could be partly the result of the analysis of different ethnic populations (Ashkenazi Jewish population [24], central-eastern population [15], western population [19], or Asian population [20, 25]), small study group with mutations, variations in mutation assay techniques, mutation types, cancer treatment modalities, or length of follow-up.

Among all biological subtypes of breast cancer, triple-negative breast cancer (TNBC) is more likely to harbor a germline *BRCA1/2* mutation, with reported prevalence rates varying from about 10% to 20% [20, 22, 26, 27]. The effect of the *BRCA1/2* mutation on the prognosis in TNBC patients has not been well examined, with divergent findings reported in the previous studies [18, 20, 22, 28–30].

2. Aim

The aim of this study was to determine the prognosis of TNBC patients with and without *BRCA1/2* germline mutation.

3. Materials and Methods

Five hundred two consecutive TNBC patients treated at the Department of Breast Cancer and Reconstructive Surgery, Maria Skłodowska-Curie Institute–Cancer Center (MSCI), Warsaw, Poland, between 2005 and 2008, were selected and analyzed to assess risk factors of recurrence, recurrence-free survival (RFS), and OS. Among them, 124 patients with a strong family history of breast cancer or ovarian cancer as well as TNBC patients diagnosed under 45 years were referred to the Genetic Counseling Unit of Cancer Prevention Department in MSCI, Warsaw, for genetic counselling and genetic tests. The patients were tested for the following *BRCA1/2* mutations: *BRCA1* gene: c.5266dupC (5382insC), c.181T>G (C61G, 300T>G), c.3700_3704delGTAAA (3819del5), c.68_69delAG

(185delAG), c.676delT (p.Cys226Valfs), c.1687C>T (p.Gln563Ter), c.3756_3759delGTCT (3875del4), c.4035delA (4153delA), c.5251C>T (5370C>T), and c.5345G>A (p.Trp1782X) and *BRCA2* gene: c.658_659del GT (p.Val220fs), c.5946delT (6174delT), c.9371A>T (p.Asn3124Ile), and c.5744C>T (C5972T). Characteristics of the whole group of 502 TNBC patients and 124 patients in whom genetic tests were performed are presented in Tables 1 and 2. The Ki-67 expression and vimentin expression were conducted additionally due to the fact that, in the analyzed period of time, these markers were not assessed as standard practice (vimentin still remains as an experimental biomarker, expressed more often in mesenchymal tumors). The decisions on therapy were made regardless of the *BRCA1/2* mutation status.

3.1. Statistical Analysis. Univariate analysis was performed in order to compare patient and tumor characteristics (age at diagnosis, clinical stage, HER2 expression, histological grade G, Ki-67 expression, and vimentin expression) as well as therapy (type of surgery, radiotherapy, and (neo)adjuvant chemotherapy) depending on the *BRCA1/2* mutation status. R Development Core Team (R 3.1.3., 2009) software was used for these analyses.

The following definitions of events were used:

- (i) RFS—time from TNBC diagnosis to recurrence
- (ii) OS—time from TNBC diagnosis to death from any cause
- (iii) Breast cancer-specific survival (BCSS)—time from TNBC diagnosis to death from breast cancer
- (iv) Survival from dissemination—time from recurrence to death from any cause

Then, RFS, OS, and survival from dissemination of the disease in both groups were assessed. Additionally, risk of breast cancer death using the competing risk method was evaluated. Finally, the *BRCA1/2* mutation was assessed as one of the seven prognostic factors for recurrence and survival in multivariate analysis using the multistep Cox model. The other prognostic factors in the Cox model were age at diagnosis, TNM stage (I, II, or III), Ki-67 expression, vimentin expression, histological grade G (G1, G2, or G3), and histological type (no special type—NST or others).

4. Results

Finally, 124 (25%) out of 502 TNBC patients had undergone genetic counselling with *BRCA1/2* mutation tests and were included for further analysis. In 30 (24%) of them, the *BRCA1/2* mutation was detected. Only in one case, the mutation of the *BRCA2* gene was found, and for the *BRCA1* gene, 29 mutated cases were detected. The following *BRCA1* mutations were found: c.5266dupC (5382insC) in 18 patients, c.181T>G (C61G, 300T>G) in 5 patients, c.3700_3704delGTAAA (3819del5) in 2 patients, and c.5251C>T (5370C>T), c.5345G>A (p.Trp1782X), c.3756_3759delGTCT (3875del4), and c.68_69delAG (185delAG) in 1 patient each, respectively. One patient harbored *BRCA2* gene mutation c.5744C>T (C5972T). The

TABLE 1: Characteristics of 502 TNBC patients.

Factor		Rate (%)
Number of patients	502	100
<i>Age at diagnosis (years)</i>		
Median	55	
Mean	56	
Range	24–98	
<i>Clinical staging (cTNM)</i>		
I	97	19.5
II	246	49
III	132	26
IV	27	5.5
<i>Initial clinical tumor staging</i>		
cT0	7	1
cT1	111	22
cT2	248	49.5
cT3	58	12
cT4	76	15
No available data	2	0.5
<i>Initial clinical node staging</i>		
cN0	243	48
cN1	180	36
cN2	58	11.5
cN3	19	4
No available data	2	0.5
<i>HER2 expression</i>		
0 or 1+	431	86
2+, FISH negative	71	14
<i>Histological type</i>		
NST	416	83
Lobular	25	5
Medullar	11	2
Apocrine	11	2
Metaplastic	20	4
Others	20	4
<i>G</i>		
1	21	4
2	165	33
3	310	62
No available data	6	1
<i>Ki-67 expression</i>		
<14%	140	28
14–30%	183	36.5
>30%	133	26.5
No available data	46	9
<i>Vimentin expression assessed</i>		
Yes	443	88
No	59	12
<i>Vimentin</i>		
Positive	71/443	16
Negative	372/443	84
Contralateral breast cancer	41	8
Other primary cancer (other than contralateral breast cancer)	45	9

FISH: fluorescence in situ hybridization.

comparison between *BRCA1/2* mutation carriers and non-carriers is presented in Table 2. The median follow-up of the entire group was 60 months. *BRCA1/2* mutation carriers were statistically significantly younger at TNBC diagnosis compared with nonmutation patients (41 vs 47 years,

respectively). Patients with the *BRCA1/2* mutation had smaller tumors (stage I: 47% vs 24.5% in noncarriers), but there was no significant difference in the regional nodal status (58.5–63% with cN0). The most common histological type was NST in both groups with a similar rate of medullar

TABLE 2: Characteristics of 124 TNBC patients assessed for *BRCA1/2* mutations.

Factor	Patients tested for <i>BRCA</i> mutations				<i>p</i> value (<i>BRCA</i> -positive vs <i>BRCA</i> -negative)
	<i>BRCA</i> noncarriers	Rate (%)	<i>BRCA</i> carriers	Rate (%)	
Number of patients	94	100	30	100	
<i>Age at diagnosis (years)</i>					
Median	49		40		0.0115
Mean	47.5		41.4		
Range	25–67		24–76		
<i>Clinical staging (cTNM)</i>					
I	23	24.5	14	47	0.0006
II	51	54	13	43	
III	19	20	2	7	
IV	1	<0.5	1	3	
<i>Initial clinical tumor staging</i>					
cT0	0	0	0	0	0.0004
cT1	28	30	16	53	
cT2	56	59.5	9	30	
cT3	4	4	2	7	
cT4	6	6.5	3	10	
No available data	0	0	0	0	
<i>Initial clinical node staging</i>					
cN0	55	58.5	19	63	0.1063
cN1	27	28.5	10	33	
cN2	9	9.5	1	4	
cN3	3	3.5	0	0	
No available data	0	0	0	0	
<i>HER2 expression</i>					
0 or 1+	79	84	29	97	0.0091
2+, FISH negative	15	16	1	3	
<i>Histological type</i>					
NST	80		21	70	0.0023
Lobular	5	85	1	3.5	
Medullar	5	5.5	1	3.5	
Apocrine	2	5.5	1	3.5	
Metaplastic	2	2	2	6	
Others	0	2	4	13.5	
<i>G</i>					
1	0	0	2	6.5	0.0065
2	29	30	12	40	
3	64	68	16	53.5	
No available data	1	2	0	0	
<i>Ki-67 expression</i>					
<14%	26	27.5	5	16.5	0.0761
14–30%	29	31	10	33.5	
>30%	28	30	13	43.5	
No available data	11	11.5	2	6.5	
<i>Vimentin expression assessed</i>					
Yes	82	87	26	86.5	0.8361
No	12	13	4	13.5	
<i>Vimentin</i>					
Positive	14	15	8	26.5	0.0372
Negative	68	85	18	73.5	
Contralateral breast cancer	13	14	8	26.5	0.0228
Other primary cancer (other than contralateral breast cancer)	9	9.5	5	16.5	0.1475

FISH: fluorescence in situ hybridization.

cancer (3.5–5.5%). Noncarriers had more often G3 tumors. Contralateral breast cancer developed in 26.5% of *BRCA1/2* mutation carriers and in 14% of noncarriers. In both groups, almost half contralateral breast cancers developed before TNBC diagnosis. Other primary cancers were also slightly more common in *BRCA1/2* mutation carriers (16.5% vs 9.5%). Almost all cases occurred after TNBC diagnosis in both groups (only 2 cases of lymphoma and one ovarian cancer developed before TNBC). The summary of these results is presented in Table 2.

In 72 patients (58% of all TNBC), the primary operation was performed. In other 47 (38%) patients, surgery was carried out after neoadjuvant chemotherapy. Breast-conserving surgery was more common in *BRCA1/2* mutation carriers (41.5% vs 33.5%). Adjuvant chemotherapy was performed in 87 patients (90% after primary surgery). Overall, (neo)adjuvant chemotherapy was performed in a similar percentage of patients with or without *BRCA1/2* mutation. The summary of patient therapy is presented in Table 3.

We compared RFS, OS, risk of breast cancer death, and survival from distant metastases in *BRCA1/2* carriers and noncarriers. The performed analysis did not show any significant differences between the groups in RFS ($p = 0.312$), also after taking into account the clinical stage of TNBC (in patients in the following stages: I: $p = 1.0$, II: $p = 0.454$, and III: $p = 0.197$) or (neo)adjuvant chemotherapy ($p > 0.05$). The risk of the recurrence depending on the *BRCA1/2* mutation status is shown in Figure 1. There was no significant difference between patients with or without *BRCA1/2* mutation regarding overall survival ($p = 0.649$). The *BRCA1/2* mutation was not a prognostic factor of patient survival. The results are presented in Figure 2. The risk of TNBC death did not differ significantly in both groups (Figure 3).

In 13% (4/30) of *BRCA1/2* mutation patients and in 21% (20/94) of noncarriers, the recurrence of the disease was detected. In both groups, there was one patient with primary metastatic TNBC. There was no significant difference in survival from detection of metastases between these two groups ($p = 0.865$). The results are presented in Figure 4.

Among seven variables taken in multivariate analysis, TNM stage was the only factor significantly influencing recurrence and death. There was no correlation between RFS or OS and other analyzed risk factors, including the *BRCA1/2* germline mutation. The results are shown in Tables 4 and 5.

5. Discussion

Our study showed that the outcome of TNBC patients did not differ depending on the *BRCA* mutation status. We aimed to clarify the prognostic value of *BRCA1/2* mutations on breast cancer-specific outcomes after conventional treatment. In our study, RFS, OS, and risk of death from TNBC were similar between patients with breast cancer and *BRCA1* germline mutation and noncarriers. Because of the fact that among our patients with *BRCA1/2* mutations only one had *BRCA2* mutation, the results and discussion concern about patients with breast cancer and *BRCA1* mutation.

5.1. All Biological Types of Breast Cancer. The meta-analysis of 11 studies performed by Lee et al. revealed that patients with breast cancer and *BRCA1* mutation had worse OS compared to noncarriers (HR = 1.92). The *BRCA2* mutation did not affect survival in patients with breast cancer (HR = 1.30) [31].

In meta-analysis by Zhong et al. [32], based on 13 studies with 10 016 women with breast cancer, concerning breast cancer survival, the *BRCA1* mutation carriers had worse OS than noncarriers (HR = 1.5, $p = 0.009$) but were not significantly different from noncarriers in terms of progression-free survival (HR = 1.35, $p = 0.09$).

In other meta-analysis performed by Zhu et al. [3], based on 34 studies, event-free survival (EFS), OS, and BCSS were compared in three groups of breast cancer patients: *BRCA1* carriers, *BRCA2* carriers, and *BRCA1/2* noncarriers. In patients with *BRCA1* and *BRCA2* mutations, OS was worse than that in patients without mutation ($p < 0.001$ and $p = 0.034$, respectively) but did not translate into poor BCSS ($p = 0.448$ and $p = 0.401$, respectively) or EFS ($p = 0.438$ and $p = 0.558$, respectively) [3]. The *BRCA1* mutation was significantly associated with worse OS in studies conducted in Europe ($p < 0.001$) and studies assessing patients diagnosed before 1995 ($p < 0.007$).

The POSH prospective cohort study analyzed patients with young-onset breast cancer (≤ 40 years) regarding the *BRCA1/2* mutation status [33]. Recently published results indicated no significant difference in OS or distant disease-free survival between patients carrying *BRCA1/2* mutations and patients without those mutations after a diagnosis of breast cancer.

A study by Wang et al. performed on the Chinese cohort revealed that patients with *BRCA1/2* mutations had worse survival outcomes than noncarriers [25]. *BRCA1/2* mutation carriers were more likely to have lymph node involvement at initial diagnosis than noncarriers [25]. In our study, we did not observe these kinds of relations.

5.2. Triple-Negative Breast Cancer. Studies that have evaluated the prognostic role of the *BRCA1/2* mutation in patients with TNBC have shown inconclusive results, but the newest and larger ones are in line with our study.

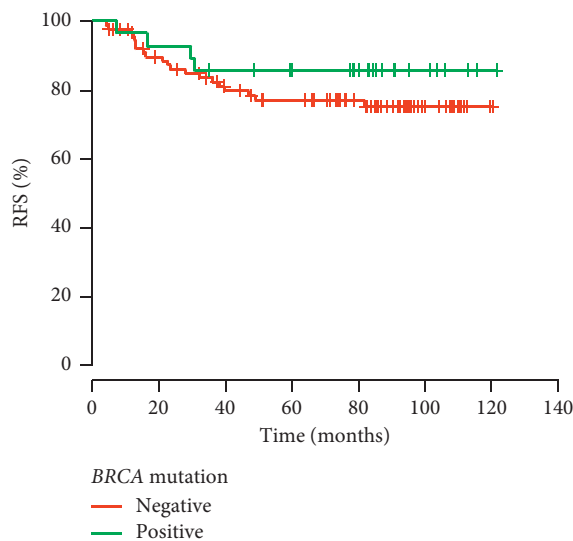
In the study performed by Yadav et al. [34], 266 TNBC patients had undergone *BRCA1/2* mutation tests. In 27% of them, *BRCA1/2* mutations were detected. No statistically significant difference was found in locoregional recurrence, distant recurrence, RFS, and OS between the breast cancer patients with and without *BRCA1/2* mutations. 5-year OS for *BRCA1/2*-positive and *BRCA1/2*-negative breast cancer patients was 83% and 90% and 5-year RFS was 83% and 80%, respectively. The differences were not statistically significant [34].

In the study by Gonzales-Angulo et al. [22], based on 77 TNBC patients, RFS was better for patients with the *BRCA1/2* mutation and OS was similar between carriers and noncarriers.

In another study, Maksimenko et al. [30] compared the outcomes of 78 TNBC patients without *BRCA1* mutation

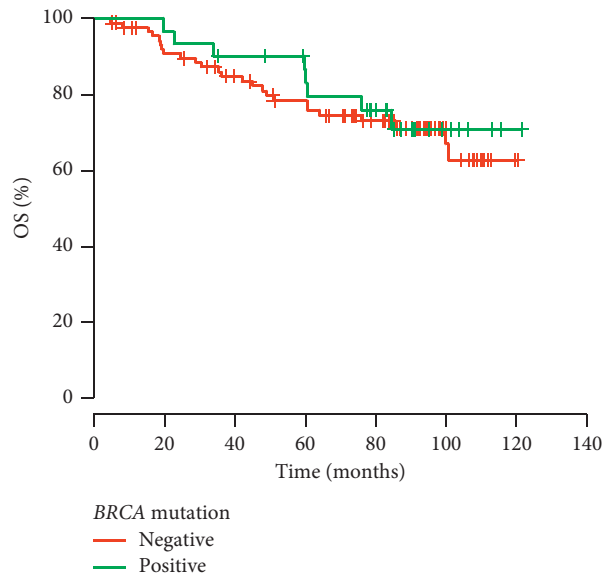
TABLE 3: Therapy of 124 TNBC patients assessed for *BRCA1/2* mutations.

Type of therapy	Patients tested for <i>BRCA</i> mutations				<i>p</i> value (<i>BRCA</i> -positive vs <i>BRCA</i> -negative)
	<i>BRCA</i> noncarriers	Rate (%)	<i>BRCA</i> carriers	Rate (%)	
Number of patients	94	100	30	100	
<i>Surgery</i>					
Yes	90	96	29	97	0.7004
No	4	4	1	3	
<i>Type of surgery</i>					
Mastectomy	60/90	66.5	17/29	58.5	0.2438
Breast-conserving surgery	30/90	33.5	12/29	41.5	
<i>Radiotherapy</i>					
Yes	55	58.5	17	56.5	0.7751
No	39	41.5	13	43.5	
<i>Radiotherapy</i>					
After mastectomy	27/55	49	5/17	29.5	0.0044
After breast-conserving surgery	28/55	51	12/17	70.5	
<i>Neoadjuvant chemotherapy</i>					
Yes	20	21.5	4	13.5	0.0940
No	74	78.5	26	86.5	
<i>Regimens in neoadjuvant chemotherapy</i>					
AT→CMF	5/20	25	1/4	25	<0.0001
Anthracycline + taxane	9/20	45	2/4	50	
Anthracycline	5/20	5	1/4	25	
Others	1/20	25	0	0	
<i>Adjuvant chemotherapy</i>					
Yes	64	68	23	76.5	0.1541
No	30	32	7	23.5	
<i>Regimens in adjuvant chemotherapy</i>					
Anthracycline (AC)	41/64	64	12/23	52	0.0574
FEC/FAC	11/64	17.5	4/23	17.5	
Anthracycline + taxane	8/64	12.5	5/23	21.5	
CMF	2/64	3	0	0	
Taxane	2/64	3	2/23	9	



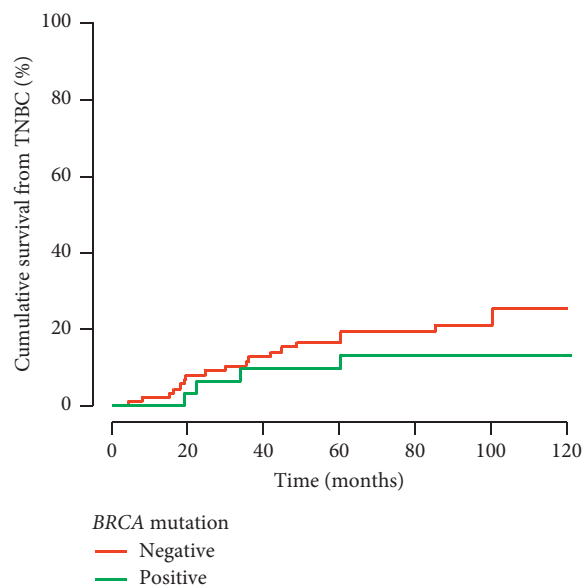
<i>BRCA</i> mutation	<i>n</i>	RFS					Median RFS (months)	<i>p</i>
		12 months	24 months	36 months	60 months	120 months		
Negative	93	96.6%	86.0%	83.6%	77.2%	75.3%	Not reached	<i>p</i> = 0.312
Positive	29	96.4%	92.9%	85.7%	85.7%	85.7%	Not reached	

FIGURE 1: Risk of recurrence in TNBC patients depending on the *BRCA* mutation status.



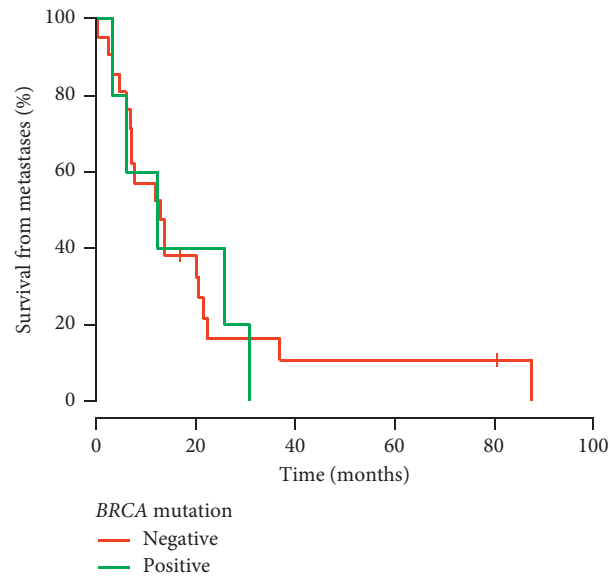
BRCA mutation	n	OS					Median OS (months)	p
		12 months	24 months	36 months	60 months	120 months		
Negative	93	97.8%	90.8%	86.1%	78.5%	62.8%	Not reached	p = 0.649
Positive	29	100%	93.5%	90.3%	86.7%	70.8%	Not reached	

FIGURE 2: Risk of death in TNBC patients depending on the BRCA mutation status.



BRCA mutation	n	Cumulative probability of death from TNBC					Median OS from TNBC (months)	p
		12 months	24 months	36 months	60 months	120 months		
Negative	93	2.2%	8.0%	11.6%	16.6%	25.3%	Not reached	p = 0.333
Positive	29	0.0%	6.4%	9.7%	9.7%	13.3%	Not reached	

FIGURE 3: Relationship between the presence of the BRCA1/2 mutation and the risk of death due to TNBC.



BRCA mutation	n	Survival from metastasis development				Median survival from metastasis development (months)	p
		12 months	24 months	36 months	60 months		
Negative	21	52.4%	16.3%	16.3%	10.9%	12.85	p = 0.865
Positive	5	60.0%	40.0%	0.0%	0.0%	12.23	

FIGURE 4: Survival time counted from relapse depending on the *BRCA1/2* mutation status.

TABLE 4: Multivariate analysis: final model for RFS.

Factor	HR	95% CI		p
Clinical stage: I or II	Reference			
Clinical stage: III	43.26	2.13	880.64	0.014

TABLE 5: Multivariate analysis: final model for OS.

Factor	HR	95% CI		p
Clinical stage: I	Reference			
Clinical stage: II	2.359	1.385	4.016	0.002
Clinical stage: III	8.353	4.918	14.188	<0.001

with those of 38 TNBC patients with the *BRCA1* mutation. The BCSS and distant recurrence were significantly lower in the *BRCA1*-positive patients. In 4 other larger studies, there was no difference found in recurrence and survival between TNBC carriers and noncarriers of *BRCA1/2* mutations [18, 20, 28, 29]. A meta-analysis of 11 papers performed by Xie et al. also revealed that RFS and OS in TNBC patients with and without *BRCA1/2* mutations did not differ [20].

Baretta et al. [24] performed a meta-analysis concerning the relation between *BRCA1/2* mutation and prognosis of breast cancer based on 105 220 breast cancer patients including 3588 (3.4%) *BRCA1/2* mutation carriers. OS, BCSS, RFS, and distant metastasis-free survival (DMFS) were

estimated. The authors found that *BRCA1* mutation carriers had a 30% higher risk of dying than *BRCA1*-negative/sporadic cases (OS), but they did not find association between *BRCA1* and the risk of death from breast cancer (BCSS). Contrary to patients with all subtypes of breast cancer, 1748 patients with TNBC and *BRCA1/2* mutations had better OS than *BRCA1/2*-negative ones (HR=0.49) [24]. The risk of recurrence in TNBC was not statistically different between *BRCA1/2* carriers and *BRCA1/2* noncarriers ($p = 0.82$). BCSS and DMFS of *BRCA1* mutation carriers did not differ from those of *BRCA1*-negative TNBC patients ($p = 0.76$ and $p = 0.65$, respectively) [24].

In the present study, all investigated TNBC cases were diagnosed and treated in one breast cancer department. The used methods did not differ depending on the *BRCA1/2* mutation status, and patients had a long time of follow-up (up to 10 years). Nowadays, new drugs such as poly(adenosine diphosphate-ribose) polymerase (PARP) inhibitors (olaparib and talazoparib) are dedicated to metastatic *BRCA1/2*-positive TNBC as well as immunotherapy for PDL-1-positive metastatic TNBC [35–37]. These drugs can influence the survival of *BRCA1/2* carriers with TNBC in the future. In the analyzed cohort with metastatic disease, the survival did not depend on the *BRCA1/2* mutation status. In contrast, Larson et al. showed that *BRCA* carriers with metastatic TNBC had clinically significant improved OS at 3 years compared to patients without *BRCA* mutations (3-year

OS of 63% vs 28%). In that study also, no patients received treatment with the PARP inhibitor [38].

6. Limitations of the Study

The retrospective nature of the study and a small number of recurrences or deaths in patients who had undergone genetic tests are two main limitations of this study.

Out of 502 consecutive TNBC patients referred to MSCI between the years 2005 and 2008, only 124 (25%) patients underwent genetic tests for the *BRCA1/2* mutation. From them, the *BRCA1/2* mutation was found only in 30 cases, which gives 6% (30/502) *BRCA1/2* carriers among 502 TNBC patients. According to the current NCCN guideline and ESMO recommendations, 65% of all TNBC patients from our analysis met the genetic test criteria solely by their age at diagnosis of TNBC (up to 60 years); therefore, the tests should be performed [10, 39]. This number might be even higher considering other criteria such as a strong family history of breast/ovarian cancer. In the years 2005–2008, genetic tests were offered at our institution only for patients with a strong family history of breast/ovarian cancer and for those under 45 years at the initial diagnosis of breast cancer.

7. Conclusion

Our study demonstrated that the *BRCA1* mutation does not affect RFS and OS in patients diagnosed with TNBC. The outcome of breast cancer in *BRCA1* carriers and noncarriers was comparable. The *BRCA1* germline mutation did not influence the prognosis of the TNBC patients.

Data Availability

The data used to support the findings of this study are available from the corresponding author upon reasonable request.

Conflicts of Interest

The authors declare that there are no conflicts of interest regarding the publication of this article.

Acknowledgments

This research was supported by the grant from National Science Centre (NCN), Poland (UMO-2014/15/B/NZ5/03532).

References

- [1] F. Wang, Q. Fang, Z. Ge, N. Yu, S. Xu, and X. Fan, "Common *BRCA1* and *BRCA2* mutations in breast cancer families: a meta-analysis from systematic review," *Molecular Biology Reports*, vol. 39, no. 3, pp. 2109–2118, 2012.
- [2] N. Tung, C. Battelli, B. Allen et al., "Frequency of mutations in individuals with breast cancer referred for *BRCA1* and *BRCA2* testing using next-generation sequencing with a 25-gene panel," *Cancer*, vol. 121, no. 1, pp. 25–33, 2015.
- [3] Y. Zhu, J. Wu, C. Zhang et al., "*BRCA* mutations and survival in breast cancer: an updated systematic review and meta-analysis," *Oncotarget*, vol. 7, pp. 70113–70127, 2016.
- [4] E. Warner, W. Foulkes, P. Goodwin et al., "Prevalence and penetrance of *BRCA1* and *BRCA2* gene mutations in unselected Ashkenazi Jewish women with breast cancer," *JNCI Journal of the National Cancer Institute*, vol. 91, no. 14, pp. 1241–1247, 1999.
- [5] J. Zhang, R. Pei, Z. Pang et al., "Prevalence and characterization of *BRCA1* and *BRCA2* germline mutations in Chinese women with familial breast cancer," *Breast Cancer Research and Treatment*, vol. 132, no. 2, pp. 421–428, 2012.
- [6] D. G. Evans, A. Shenton, E. Woodward, F. Lalloo, A. Howell, and E. R. Maher, "Penetrance estimates for *BRCA1* and *BRCA2* based on genetic testing in a clinical cancer genetics service setting: risks of breast/ovarian cancer quoted should reflect the cancer burden in the family," *BMC Cancer*, vol. 8, no. 1, 2008.
- [7] D. Ford, D. F. Easton, M. Stratton et al., "Genetic heterogeneity and penetrance analysis of the *BRCA1* and *BRCA2* genes in breast cancer families. The breast cancer linkage consortium," *American Journal of Human Genetics*, vol. 62, no. 62, pp. 676–689, 1998.
- [8] D. M. Van der Kolk, G. H. de Bock, B. K. Leegte et al., "Penetrance of breast cancer, ovarian cancer and contralateral breast cancer in *BRCA1* and *BRCA2* families: high cancer incidence at older age," *Breast Cancer Research and Treatment*, vol. 124, no. 3, pp. 643–651, 2010.
- [9] S. Paluch-Shimon, C. Sessa, M. J. Cardoso, F. Gilbert, and E. Senkus, "Prevention and screening in *BRCA* mutation carriers and other breast/ovarian hereditary cancer syndromes: ESMO Clinical Practice Guidelines for cancer prevention and screening," *Annals of Oncology*, vol. 27, no. suppl 5, pp. v103–v110, 2016.
- [10] NCCN Clinical Practice Guidelines in Oncology, *Genetic/Familial High Risk Assessment: Breast and Ovarian*. Version 3, NCCN, Fort Washington, PA, USA, 2019.
- [11] J. Krammer, K. Pinker-Domenig, M. E. Robson et al., "Breast cancer detection and tumor characteristics in *BRCA1* and *BRCA2* mutation carriers," *Breast Cancer Research and Treatment*, vol. 163, no. 3, pp. 565–571, 2017.
- [12] L. Bordeleau, S. Panchal, and P. Goodwin, "Prognosis of *BRCA*-associated breast cancer: a summary of evidence," *Breast Cancer Research and Treatment*, vol. 119, no. 1, pp. 13–24, 2010.
- [13] D. Stoppa-Lyonnet, Y. Ansquer, H. Dreyfus et al., "Familial invasive breast cancers: worse outcome related to *BRCA1* mutations," *Journal of Clinical Oncology*, vol. 18, no. 24, pp. 4053–4059, 2000.
- [14] C. T. M. Brekelmans, C. Seynaeve, M. Menke-Pluymers et al., "Survival and prognostic factors in *BRCA1*-associated breast cancer," *Annals of Oncology*, vol. 17, no. 3, pp. 391–400, 2006.
- [15] T. Huzarski, T. Byrski, J. Gronwald et al., "Ten-year survival in patients with *BRCA1*-negative and *BRCA1*-positive breast cancer," *Journal of Clinical Oncology*, vol. 31, no. 26, pp. 3191–3196, 2013.
- [16] O. T. Jóhannsson, J. Ranstam, A. Borg, and H. Olsson, "Survival of *BRCA1* breast and ovarian cancer patients: a population-based study from southern Sweden," *Journal of Clinical Oncology*, vol. 16, no. 2, pp. 397–404, 1998.
- [17] G. Rennert, S. Bisland-Naggan, O. Barnett-Griness et al., "Clinical outcomes of breast cancer in carriers of *BRCA1* and *BRCA2* mutations," *New England Journal of Medicine*, vol. 357, no. 2, pp. 115–123, 2007.

- [18] L. J. Lee, B. Alexander, S. J. Schnitt et al., "Clinical outcome of triple negative breast cancer in *BRCA1* mutation carriers and noncarriers," *Cancer*, vol. 117, no. 14, pp. 3093–3100, 2011.
- [19] P. J. Goodwin, K.-A. Phillips, D. W. West et al., "Breast cancer prognosis in *BRCA1* and *BRCA2* mutation carriers: an international prospective breast cancer family registry population-based cohort study," *Journal of Clinical Oncology*, vol. 30, no. 1, pp. 19–26, 2012.
- [20] Y. Xie, Q. Gou, Q. Wang et al., "The role of BRCA status on prognosis in patients with triple-negative breast cancer," *Oncotarget*, vol. 8, no. 50, pp. 87151–87162, 2017.
- [21] A. Veronesi, C. de Giacomi, M. D. Magri et al., "Familial breast cancer: characteristics and outcome of *BRCA1-2* positive and negative cases," *BMC Cancer*, vol. 5, no. 1, 2005.
- [22] A. M. Gonzalez-Angulo, K. M. Timms, S. Liu et al., "Incidence and outcome of BRCA mutations in unselected patients with triple receptor-negative breast cancer," *Clinical Cancer Research*, vol. 17, no. 5, pp. 1082–1089, 2011.
- [23] L. Cortesi, C. Masini, C. Cirilli et al., "Favorable ten-year overall survival in a Caucasian population with high probability of hereditary breast cancer," *BMC Cancer*, vol. 10, no. 1, 2010.
- [24] Z. Baretta, S. Mocellin, E. Goldin et al., "Effect of BRCA germline mutations on breast cancer prognosis," *Medicine*, vol. 95, no. 40, Article ID e4975, 2016.
- [25] Y. A. Wang, J.-W. Jian, Ch-F. Hung et al., "Germline breast cancer susceptibility gene mutations and breast cancer outcomes," *BMC Cancer*, vol. 18, no. 1, pp. 315–327, 2018.
- [26] A.-R. Hartman, R. R. Kaldate, L. M. Sailer et al., "Prevalence of BRCA mutations in an unselected population of triple-negative breast cancer," *Cancer*, vol. 118, no. 11, pp. 2787–2795, 2012.
- [27] M. W. Wong-Brown, C. J. Meldrum, J. E. Carpenter et al., "Prevalence of *BRCA1* and *BRCA2* germline mutations in patients with triple-negative breast cancer," *Breast Cancer Research and Treatment*, vol. 150, no. 1, pp. 71–80, 2015.
- [28] S. Bayraktar, A. M. Gutierrez-Barrera, D. Liu et al., "Outcome of triple-negative breast cancer in patients with or without deleterious BRCA mutations," *Breast Cancer Research and Treatment*, vol. 130, no. 1, pp. 145–153, 2011.
- [29] N. Tung, E. Gaughan, M. R. Hacker et al., "Outcome of triple negative breast cancer: comparison of sporadic and *BRCA1*-associated cancers," *Breast Cancer Research and Treatment*, vol. 146, no. 1, pp. 175–182, 2014.
- [30] J. Maksimenko, A. Irmejs, M. Nakazawa-Miklasevica et al., "Prognostic role of *BRCA1* mutation in patients with triple-negative breast cancer," *Oncology Letters*, vol. 7, no. 1, pp. 278–284, 2014.
- [31] E.-H. Lee, KOHBRA Research Group, S. K. Park et al., "Effect of *BRCA1/2* mutation on short-term and long-term breast cancer survival: a systematic review and meta-analysis," *Breast Cancer Research and Treatment*, vol. 122, no. 1, pp. 11–25, 2010.
- [32] Q. Zhong, H.-L. Peng, X. Zhao, L. Zhang, and W.-T. Hwang, "Effects of *BRCA1*- and *BRCA2*-related mutations on ovarian and breast cancer survival: a meta-analysis," *Clinical Cancer Research*, vol. 21, no. 1, pp. 211–220, 2015.
- [33] E. R. Copson, T. C. Maishman, W. J. Tapper et al., "Germline BRCA mutation and outcome in young-onset breast cancer (POSH): a prospective cohort study," *The Lancet Oncology*, vol. 19, no. 2, pp. 169–180, 2018.
- [34] S. Yadav, R. Ladkany, D. Yadav et al., "Impact of BRCA mutation status on survival of women with triple-negative breast cancer," *Clinical Breast Cancer*, vol. 18, no. 5, pp. e1229–e1235, 2017.
- [35] M. Robson, S.-A. Im, E. Senkus et al., "Olaparib for metastatic breast cancer in patients with a germline BRCA mutation," *New England Journal of Medicine*, vol. 377, no. 6, pp. 523–533, 2017.
- [36] J. K. Litton, H. S. Rugo, J. Ettl et al., "Talazoparib in patients with advanced breast cancer and a germline BRCA mutation," *New England Journal of Medicine*, vol. 379, no. 8, pp. 753–763, 2018.
- [37] P. Schmid, S. Adams, H. S. Rugo et al., "Atezolizumab and nab-paclitaxel in advanced triple-negative breast cancer," *New England Journal of Medicine*, vol. 379, no. 22, pp. 2108–2121, 2018.
- [38] K. Larson, Y. Y. Wang, K. Finke et al., "Impact of germline BRCA mutation status on survival in women with metastatic triple negative breast cancer," in *Proceedings of the 2018 San Antonio Breast Cancer Symposium*, AACR Cancer Research, San Antonio, TX, USA, December 2018.
- [39] F. Cardoso, S. Kyriakides, S. Ohno et al., "Early breast cancer: ESMO clinical practice guidelines for diagnosis, treatment and follow-up," *Annals of Oncology*, vol. 30, no. 8, pp. 1194–1220, 2019.