

METHODOLOGY ARTICLE

Open Access



Simultaneous detection of *EGFR* amplification and *EGFRvIII* variant using digital PCR-based method in glioblastoma

Maxime Fontanilles^{1,2*}, Florent Marguet^{3,4}, Philippe Ruminy³, Carole Basset⁴, Adrien Noel¹, Ludivine Beaussire¹, Mathieu Viennot³, Pierre-Julien Viailly⁴, Kevin Cassinari⁵, Pascal Chambon⁵, Doriane Richard⁶, Cristina Alexandru², Isabelle Tennevet², Olivier Langlois⁷, Frédéric Di Fiore^{1,2,8}, Annie Laquerrière^{3,4}, Florian Clatot^{1,2†} and Nasrin Sarafan-Vasseur^{1†}

Abstract

Epidermal growth factor receptor (EGFR) amplification and *EGFR* variant III (*EGFRvIII*, deletion of exons 2–7) are of clinical interest for glioblastoma. The aim was to develop a digital PCR (dPCR)-based method using locked nucleic acid (LNA)-based hydrolysis probes, allowing the simultaneous detection of the *EGFR* amplification and *EGFRvIII* variant. Sixty-two patients were included. An exploratory cohort ($n = 19$) was used to develop the dPCR assay using three selected amplicons within the *EGFR* gene, targeting intron 1 (EGFR1), junction of exon 3 and intron 3 (EGFR2) and intron 22 (EGFR3). The copy number of *EGFR* was estimated by the relative quantification of EGFR1, EGFR2 and EGFR3 amplicon droplets compared to the droplets of a reference gene. *EGFRvIII* was identified by comparing the copy number of the EGFR2 amplicon to either the EGFR1 or EGFR3 amplicon. dPCR results were compared to fluorescence in situ hybridization (FISH) and next-generation sequencing for amplification; and to RT-PCR-based method for *EGFRvIII*. The dPCR assay was then tested in a validation cohort ($n = 43$). A total of 8/19 *EGFR*-amplified and 5/19 *EGFRvIII*-positive tumors were identified in the exploratory cohort. Compared to FISH, the EGFR3 dPCR assay detected all *EGFR*-amplified tumors (8/8, 100%) and had the highest concordance with the copy number estimation by NGS. The concordance between RT-PCR and dPCR was also 100% for detecting *EGFRvIII* using an absolute difference of 10.8 for the copy number between EGFR2 and EGFR3 probes. In the validation cohort, the sensitivity and specificity of dPCR using EGFR3 probes were 100% for the *EGFR* amplification detection compared to FISH (19/19). *EGFRvIII* was detected by dPCR in 8 *EGFR*-amplified patients and confirmed by RT-PCR. Compared to FISH, the EGFR2/EGFR3 dPCR assay was estimated with a one-half cost value. These results highlight that dPCR allowed the simultaneous detection of *EGFR* amplification and *EGFRvIII* for glioblastoma.

Keywords: Glioblastoma, Digital PCR, *EGFR* amplification, *EGFRvIII* variant, Cost-effectiveness

* Correspondence: maxime.fontanilles@chb.unicancer.fr

†Florian Clatot and Nasrin Sarafan-Vasseur contributed equally to this work.

¹Inserm U1245, Normandie Univ, UNIROUEN, IRON group, Normandy Centre for Genomic and Personalized Medicine, Rouen University Hospital, F-76031 Rouen, France

²Department of Medical Oncology, Cancer Centre Henri Becquerel, Rue d'Amiens, F-76038 Rouen, France

Full list of author information is available at the end of the article



© The Author(s). 2020 **Open Access** This article is licensed under a Creative Commons Attribution 4.0 International License, which permits use, sharing, adaptation, distribution and reproduction in any medium or format, as long as you give appropriate credit to the original author(s) and the source, provide a link to the Creative Commons licence, and indicate if changes were made. The images or other third party material in this article are included in the article's Creative Commons licence, unless indicated otherwise in a credit line to the material. If material is not included in the article's Creative Commons licence and your intended use is not permitted by statutory regulation or exceeds the permitted use, you will need to obtain permission directly from the copyright holder. To view a copy of this licence, visit <http://creativecommons.org/licenses/by/4.0/>. The Creative Commons Public Domain Dedication waiver (<http://creativecommons.org/publicdomain/zero/1.0/>) applies to the data made available in this article, unless otherwise stated in a credit line to the data.

Introduction

Glioblastoma is the most frequent primary brain tumor in adults, with 125,000 to 150,000 new cases per year worldwide [1]. Despite extensive treatment based on surgery, radiotherapy and chemotherapy combination, recurrence remains the rule with a median overall survival of less than 18–24 months [2]. Diagnosis is commonly based on histopathological examination and characterization of *isocitrate dehydrogenase (IDH)1/2* mutations [3]. Recent advances also highlighted a key role of other molecular alterations, such as those located on the *epidermal growth factor receptor (EGFR)* gene, which is altered in approximately 57% of cases [4]. *EGFR* amplification and *EGFR* variant III (*EGFRvIII*), which is characterized by the deletion of exons 2–7, are the two most frequent *EGFR* alterations in glioblastoma observed in 40–50% and 10% of patients, respectively [4–7]. Interestingly, it has been reported that the presence of *EGFRvIII* is associated with *EGFR* gene amplification in most cases [8]. In this context, specific treatments that directly target the *EGFR* pathway or activate the immune response against *EGFRvIII* have been recently developed using either as a single therapy or in combination with standard treatment [9–12]. Antibody-drug conjugates targeting *EGFR* may improve survival at the time of recurrence in *EGFR*-amplified glioblastoma [13]. In addition, identification of *EGFR* amplification associated with either a *telomerase reverse transcriptase* promoter (*TERTp*) mutation or chromosomal alterations (chromosome 7 gain and chromosome 10 loss) in diffuse or anaplastic astrocytoma has led to a reclassification proposal of grade II-III 1p19q non-codeleted gliomas into glioblastoma-like tumors [14, 15]. Taken together, these data support that the detection of *EGFR* alterations may be considered relevant in patients treated for glioblastoma.

Until now, *EGFR* alterations have been detected by separate methods. Indeed, fluorescence in situ hybridization (FISH) is the gold standard for the detection of *EGFR* amplification, and the use of other methods, such as genomic hybridization (array CGH) or next-generation sequencing (NGS), has also been reported. On the other hand, the detection of the *EGFRvIII* variant, leading to an abnormal expression of ARNm, is performed commonly using RT-PCR-based methods [9].

The development of a specific molecular method allowing the simultaneous detection of *EGFR* alterations may be of interest in glioblastoma. Targeted copy number variation (CNV) detection by digital PCR (dPCR) using locked nucleic acid (LNA)-based hydrolysis probes has recently been shown to be efficient in genetic diseases [16]. LNA-hydrolysis probes are very short nucleotides, and repeated sequences across the human genome may be incorporated in a dPCR amplicon. Gene copy number estimation is then based on the ratio of detected LNA probes between a gene of interest and a reference gene.

In this context, we aimed to develop a novel dPCR assay using LNA-hydrolysis probes located within and outside the region spanning from exon 2 to exon 7 to allow the simultaneous detection of *EGFR* amplification and *EGFRvIII* variant. First, we used an exploratory cohort of patients with glioblastoma to develop a dPCR assay in comparison to FISH for *EGFR* amplification and to an RT-PCR-based method for *EGFRvIII*. In the second step, we tested the ability of our dPCR assay to simultaneously detect these two *EGFR* alterations in an independent validation cohort of patients with glioblastoma.

Patients and methods

Patients and tumor samples

The present study is ancillary to the ongoing prospective GLIOPLAK trial (registered in ClinicalTrials.gov, NCT02617745), which is investigating predictive markers of chemo-induced toxicities. A total of 62 patients were recruited from November 2015 to November 2017. Eligible patients were at least 18 years old and had a newly diagnosed and histologically confirmed supratentorial glioblastoma, according to the 2016 WHO classification [3]. Patients received concomitant radiotherapy with temozolomide followed by sequential temozolomide treatment [2]. Tumor samples were obtained during surgery (biopsy, gross-total or partial resection) and processed for routine histopathology, immunohistochemistry and molecular biology experiments. Tumor DNA was extracted from formalin-fixed paraffin-embedded FFPE samples using the Maxwell 16 FFPE Plus LEV DNA Purification® Kit on a Maxwell 16 Instrument® (Promega®, Fitchburg, Wisconsin, United States). *IDH1/2* mutations within exon 4 were analyzed using the ABI PRIM SNaPshot® Multiplex Kit (ThermoFisher Scientific®, Waltham, Massachusetts, USA); *MGMT* promoter (*MGMTp*) methylation was analyzed with the pyrosequencing method (*therascreen MGMT Pyro*®, Qiagen®, ThermoFisher Scientific®).

For the purpose of the present study, the population was divided into two groups: an exploratory cohort, which included the first 19 patients, and a validation cohort, which was based on the next 43 consecutive patients. The exploratory cohort was used to develop the dPCR assay by selecting amplicons and allowing the simultaneous detection of *EGFR* amplification and *EGFRvIII*, according to the standard methods of FISH or NGS and RT-PCR-based methods, respectively. In the second step, we used an independent validation cohort to evaluate the ability of the dPCR assay to detect both *EGFR* alterations.

Development of dPCR assay

According to recently published methods of dPCR using universal LNA-hydrolysis probes from the 96 Universal Probe Library® (UPL, Sigma-Aldrich®, St. Louis, Missouri, USA), three dPCR assays were performed for each tumor sample [16]. These assays used a duplex PCR: one PCR

amplicon within the *EGFR* gene and one reference PCR amplicon located in the *hydroxymethylbilane synthase* (*HMBS*) gene, a housekeeping gene located in 11q23. Three different amplicons of the *EGFR* gene were designed: the *EGFR1* amplicon located within intron 1 with UPL® probe #1 (reference: 04684974001), the *EGFR2* amplicon located between exon 3 and intron 3 with UPL® probe #44 (reference: 04688040001) and the *EGFR3* amplicon located within intron 22 with UPL® probe #11 (reference: 04685105001) (Fig. 1a). The reference *HMBS* amplicon is located in intron 1 using the forward primer (5'-GGGACAGTGTACCCAAGGTC-3'), the reverse primer (5'-CTGAGGTAAACGGATCTGACG-3') and a

custom trichloro-phenylcarboxyfluorescein oligonucleotide (VIC)-labeled probe (5'-CCAAGAGGCTGAGCAGGACT-3', ThermoFisher Scientific®). ddPCR experiments were performed using a Qx200® droplet digital PCR (ddPCR) System (Biorad®, Hercules, California, USA). ddPCR was run in a final volume of 22 µL with tumor DNA, 10 µL ddPCR Supermix for probes (no dUTP), primers for the *EGFR*- and *HMBS*-targeted amplicons (0.9 µM), 6-carboxyfluorescein (FAM)-labeled LNA-based hydrolysis probe for the *EGFR*-targeted sequence (0.18 µM), and VIC-labeled probe for the *HMBS* amplicon (0.18 µM). Thermal cycling was performed, according to the manufacturer's instructions: 10 min at 95 °C; then 40 cycles at 94 °C for 30 s

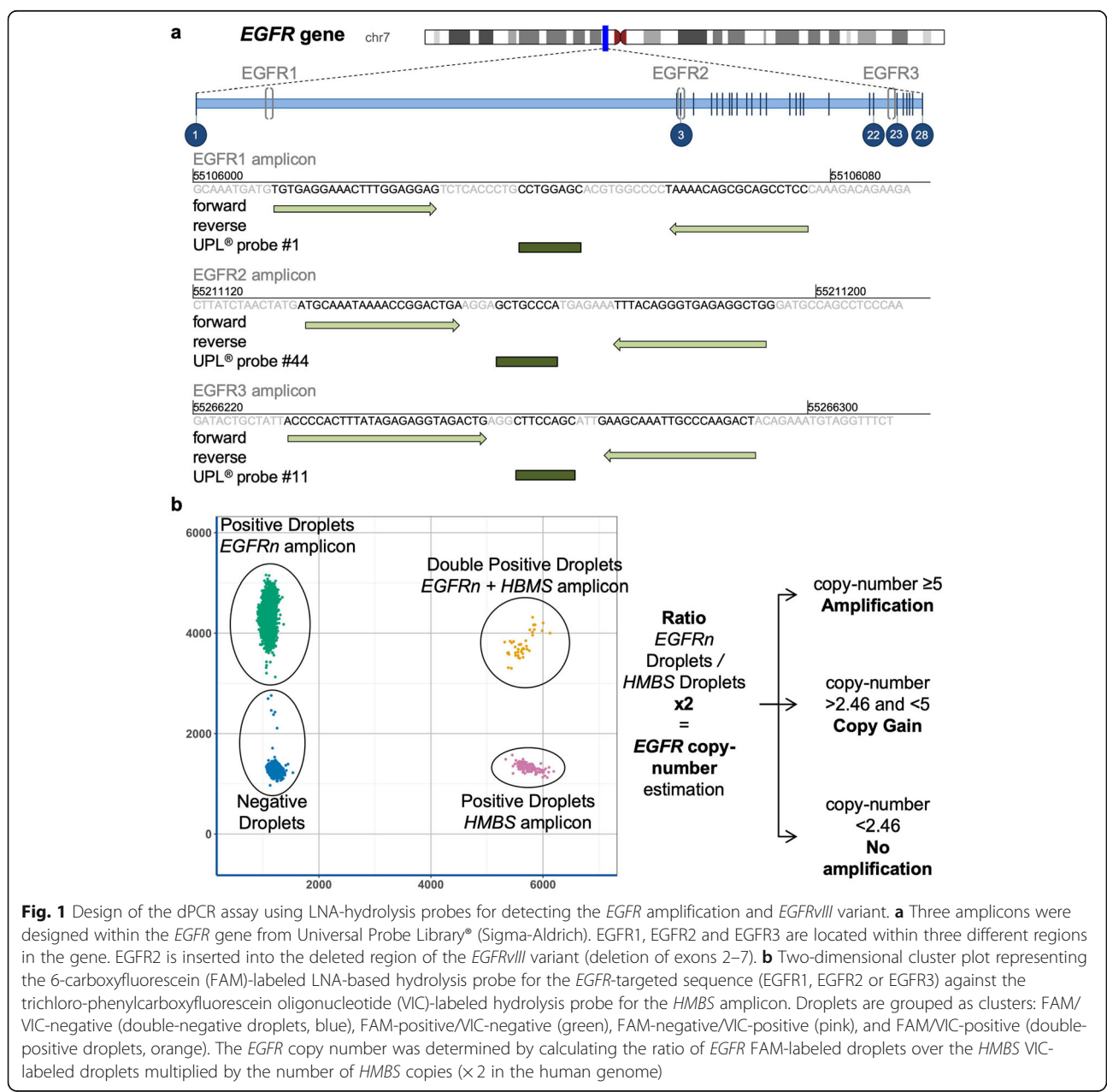


Fig. 1 Design of the ddPCR assay using LNA-hydrolysis probes for detecting the *EGFR* amplification and *EGFRvIII* variant. **a** Three amplicons were designed within the *EGFR* gene from Universal Probe Library® (Sigma-Aldrich). *EGFR1*, *EGFR2* and *EGFR3* are located within three different regions in the gene. *EGFR2* is inserted into the deleted region of the *EGFRvIII* variant (deletion of exons 2–7). **b** Two-dimensional cluster plot representing the 6-carboxyfluorescein (FAM)-labeled LNA-based hydrolysis probe for the *EGFR*-targeted sequence (*EGFR1*, *EGFR2* or *EGFR3*) against the trichloro-phenylcarboxyfluorescein (VIC)-labeled hydrolysis probe for the *HMBS* amplicon. Droplets are grouped as clusters: FAM/VIC-negative (double-negative droplets, blue), FAM-positive/VIC-negative (green), FAM-negative/VIC-positive (pink), and FAM/VIC-positive (double-positive droplets, orange). The *EGFR* copy number was determined by calculating the ratio of *EGFR* FAM-labeled droplets over the *HMBS* VIC-labeled droplets multiplied by the number of *HMBS* copies (x 2 in the human genome)

and 56 °C for 1 min; and a final step of 10 min at 98 °C. The software QuantaSoft® was used for the interpretation of the profiles. The *EGFR* copy number was determined by calculating the ratio of *EGFR* FAM-labeled droplets over the *HMBS* VIC-labeled droplets multiplied by the number of *HMBS* copies ($\times 2$ in the human genome) (Fig. 1b). CNV assessment was then based on comparisons to the *EGFR* copy number estimation from FFPE control tissues (normal copy number, 1.66–2.46). According to molecular analyses from INTELLANCE trials, glioblastoma was considered to be *EGFR*-amplified if the copy number was greater than or equal to 5 [7]. For *EGFRvIII* identification, we hypothesized that the copy number estimated by the *EGFR2* amplicon would be lower than the copy number estimated by *EGFR1/EGFR3* for the same sample. The optimal amount of DNA for one dPCR experiment was set at 30 ng.

***EGFR* amplification detection by fluorescence in situ hybridization**

FISH was performed on FFPE tumor samples. After the selection of an area containing more than 70% tumor cells, 4- μ m sections were deparaffinized, dehydrated with ethanol and pretreated with Vysis Paraffin Pretreatment IV (Abbott®, Illinois, USA). Hybridization was performed using the *EGFR/CEP7* FISH Probe Kit® (Abbott®), according to the manufacturer's instructions. The probes used covers 303 kb located in the 7p11 region, which contains the *EGFR* gene. The reference probe was located on the centromere of chromosome 7. The post-hybridization step was performed with a Wash Buffer Kit (Abbott®). Samples were considered *EGFR*-amplified when the quantity of fluorescence of the *EGFR*-targeting probe (red fluorescence) was greater than twofold per nucleus than the number of centromere-targeting probes (green fluorescence) and only when at least 15% of tumor cell nuclei were *EGFR*-amplified [7].

NGS experiments and *EGFRvIII* detection

An Ion Torrent Personal Genome Machine (PGM, Life Technologies®, Carlsbad, California, United States of America) was used for *EGFR* somatic point mutations and *EGFR* amplification detection. Tumor DNA was sequenced using a custom *EGFR*-targeted panel dedicated to highly recurrent altered region of the gene (Additional File: Table S1) [4]. Amplified libraries (Ion AmpliSeq® Library Kit 2.0) were submitted to emulsion PCR using the Ion OneTouch® 200 Template Kit (Life Technologies®) with the Ion OneTouch® System (Life Technologies®). Data analysis was performed using Torrent Suite version 5.4 software (ThermoFisher Scientific®). Reads were mapped to the human hg19 reference genome. Copy-number was estimated using the ONCOCNV algorithm compared to control DNA from healthy subjects [17].

EGFRvIII identification was performed using ligation-dependent reverse transcription polymerase chain reaction (LD-RT-PCR), which allows the detection of fusion transcripts and exon skipping [18–20]. RNA was extracted from FFPE tumor samples using the Maxwell® 16 LEV RNA FFPE Purification Kit (reference AS1260, Promega®) and following manufacturer instructions. RNA was converted into complementary DNA (cDNA) using reverse transcription probes located on the end of *EGFR* exon 1 and the start of *EGFR* exon 8; the cDNA was then hybridized. In the case of *EGFRvIII* (deletion of exons 2–7), by adding DNA ligase, a covalent link between the two probes was formed, allowing PCR amplification and subsequent identification by NGS on MiSeq® (Illumina®, San Diego, California, USA).

Cost-effectiveness estimation

An exploratory cost-effectiveness study was conducted to compare the cost of *EGFR* amplification detection with dPCR with the reference method (FISH). Total costs per patient included reagent costs and medical/technician times.

Standard protocol approvals, registrations and patient consent

Informed written consent to participate in the study was obtained from all patients. The French National Committee for the Protection of Persons approved the study (RCB ID 2015-A00377–42).

Statistical analyses

In the exploratory cohort, to assess the equivalence of the *EGFR* copy number estimation between NGS and dPCR, a correlation matrix plot was performed. The sensitivity, specificity and positive and negative predictive values were calculated to assess the diagnostic performance. The gold standard was the FISH results. The copy number difference and its threshold between the *EGFR2* assay and the two other techniques to predict the *EGFRvIII* variant were determined using receiver operating characteristic (ROC) curves. In the validation cohort, the sensitivity and specificity of the dPCR assay for detecting *EGFR* amplification was compared to those of FISH. All dPCR and FISH analyses were carried out in a double-blind manner. Statistical analyses and figures were performed using R software (R version 3.5.1, 2018, Vienna, Austria) [21].

Results

Baseline characteristics

The characteristics of all patients are detailed in Table 1. Among them, 59 (95%) had wild-type *IDH* (*IDH*-wt) glioblastoma, and 3 had *IDH*-mutated glioblastoma. Overall, *EGFR* amplification was identified in 27 tumors

Table 1 Clinical and Tumor characteristics

Characteristics		Entire cohort N = 62	Exploratory cohort N = 19	Validation cohort N = 43
Age (years), mean [min. – max.]		56.9 [21–76]	55.5 [28–76]	57.7 [21–72]
Sex	Female	28 (45%)	7 (37%)	21 (49%)
	Male	34 (55%)	12 (63%)	22 (51%)
Surgery	Biopsy	25 (40%)	8 (42%)	17 (40%)
	Resection	37 (60%)	11 (58%)	26 (60%)
Glioblastoma <i>IDH</i> wild type		59 (95%)	18 (95%)	41 (95%)
	Giant cell glioblastoma	1 (2%)	1 (5%)	0
	Gliosarcoma	2 (3%)	0	2 (5%)
Glioblastoma <i>IDH</i> mutant		3 (5%)	1 (5%)	2 (5%)
<i>EGFR</i> amplification by FISH		27 (43%)	8 (42%)	19 (44%)
<i>MGMTp</i> methylation	Non-methylated	37 (60%)	13 (68%)	24 (56%)
	Methylated	17 (27%)	6 (32%)	11 (26%)
	Unknown	8 (13%)	0	8 (18%)
<i>TERTp</i> mutation	C228T	41 (66%)	14 (74%)	27 (63%)
	C250T	14 (23%)	4 (21%)	10 (23%)
	Wild-type	7 (11%)	1 (5%)	6 (14%)

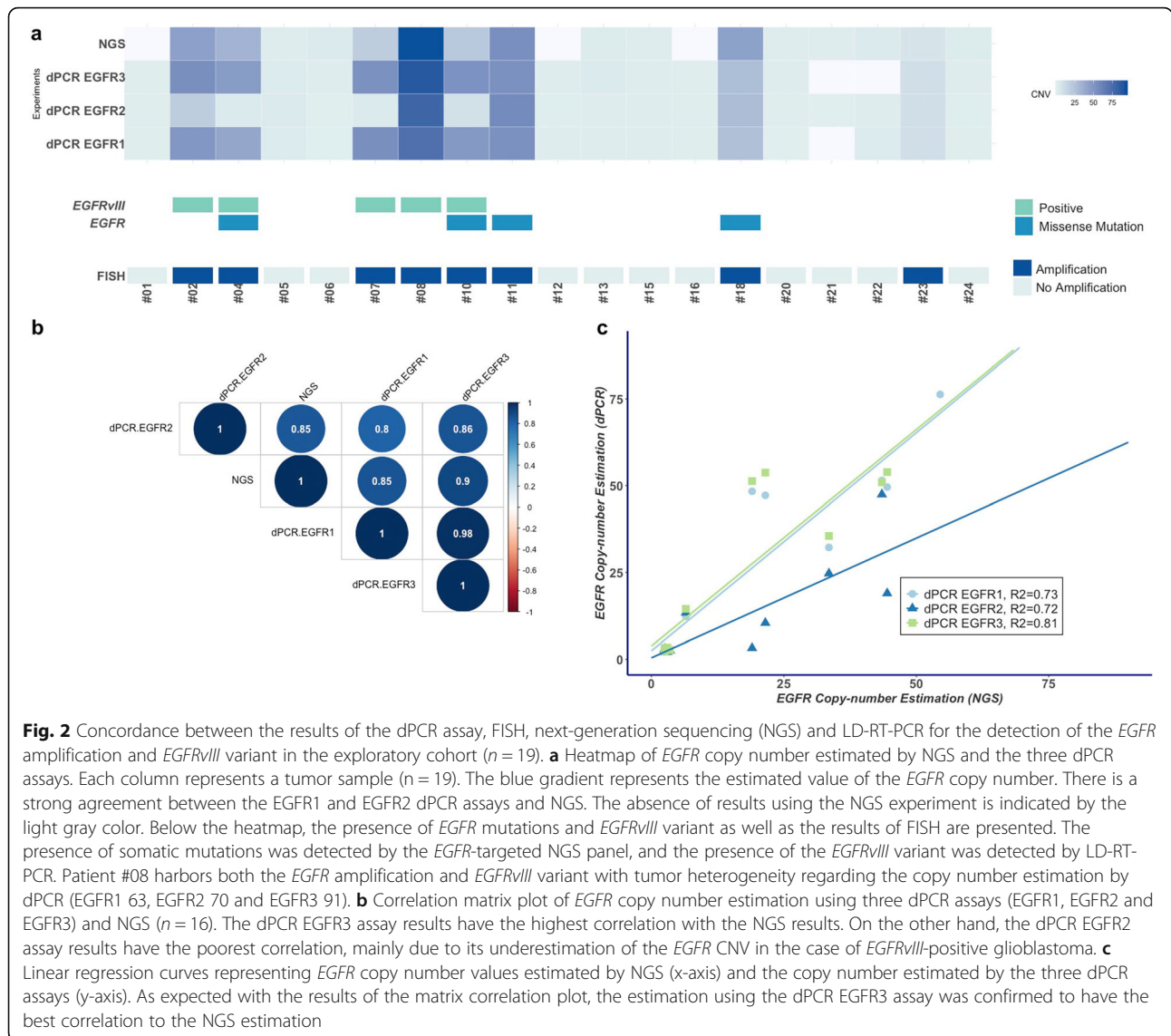
(44%) using FISH; a total of 8 (42%) and 19 (44%) were in the exploratory and validation cohorts, respectively. In the group of patients with an *IDH*-wt glioblastoma, three had a rare histological subtype (1 with giant cell glioblastoma and 2 with gliosarcoma), and none of the three tumors had *EGFR* amplification.

Development of a dPCR assay for detecting *EGFR* alterations in the exploratory cohort

Among the 19 patients in the exploratory cohort, *EGFR* amplification was identified in eight (8/19, 42%) patients using FISH. *EGFR*1 and *EGFR*3 assays strictly correlated with FISH results, making it possible to distinguish all *EGFR*-amplified (8/8) and *EGFR*-non-amplified glioblastoma (11/11), with sensitivity, specificity, positive and negative predictive values of 100%. Overall, the mean copy number estimation by dPCR was 25 (range 2–76) using *EGFR*1 and 29.4 (range 2–98) using *EGFR*3. Using a threshold of copy number amplification greater than or equal to 5, the mean *EGFR*1 copy number amplification was 47.5 (range 12.3–76.3), and the mean *EGFR*3 copy number amplification was 56.1 (14.5–98.3) (Fig. 2a). Using FISH, seven out of the 8 *EGFR*-amplified glioblastomas contained at least 90% cell nuclei with *EGFR* amplification. Interestingly, the remaining *EGFR*-amplified glioblastoma patient (patient #23) had 30% amplified cell nuclei and concordant copy number estimation by dPCR of 12.3 for *EGFR*1 and 14.5 for *EGFR*3. The diagnostic performance of *EGFR*2 was lower with one discordant case; the *EGFR* was not amplified by dPCR but was amplified using FISH (sensitivity of 87.5% and specificity of 100%).

NGS experiments were performed in 16 out of the 19 tumors, and three patients had a tumor DNA quantity that was too low to be analyzed. The 8/16 patients with an *EGFR* amplification detected by NGS were the same as those identified with dPCR assay or FISH. Notably, the correlation coefficient between the copy number calculated by dPCR assays (*EGFR*1, *EGFR*2 and *EGFR*3) and by NGS was higher than 0.8 (Fig. 2b). The copy number estimated by the *EGFR*3 assay had the highest correlation coefficient with NGS values (correlation coefficient of 0.9 and R-squared of 0.81) (Fig. 2c). The copy number estimation by the *EGFR*2 assay had the lowest correlation with the *EGFR*1/*EGFR*3 dPCR assays and with NGS. Moreover, the mean copy number by the *EGFR*2 assay was significantly lower than that estimated by the *EGFR*3 assay (18.8 vs 29.4, $P = 0.023$). Five *EGFR*-amplified glioblastomas had a lower estimated copy number by *EGFR*2 than those by *EGFR*1/*EGFR*3 assays; in one patient (patient #07), an *EGFR*2 copy number was estimated as 3.3, which was below the established cutoff.

A total of 19 patients were tested for the *EGFRvIII* variant. Among them, five patients were positive for an *EGFRvIII* variant using LD-RT-PCR. The dPCR assays detected a total of 5/19 patients with the *EGFRvIII* variant, all of which were identical to those detected by the LD-RT-PCR method (Fig. 2a and Additional File: Fig. S2). We observed that the most predictive copy number differences between dPCR assays for detecting the *EGFRvIII* variant was between the *EGFR*3 and *EGFR*2 assays, rather than between the *EGFR*1 and *EGFR*2 assays, with a copy number absolute difference of 10.8 (AUC 1) (Fig. 3).



Taken together, using these results, the *EGFR3* assay and the *EGFR2/EGFR3* assay were selected to detect *EGFR*-amplified glioblastoma and to identify the *EGFRvIII* variant in the validation cohort (Fig. 4).

Results of the dPCR assays in the validation cohort

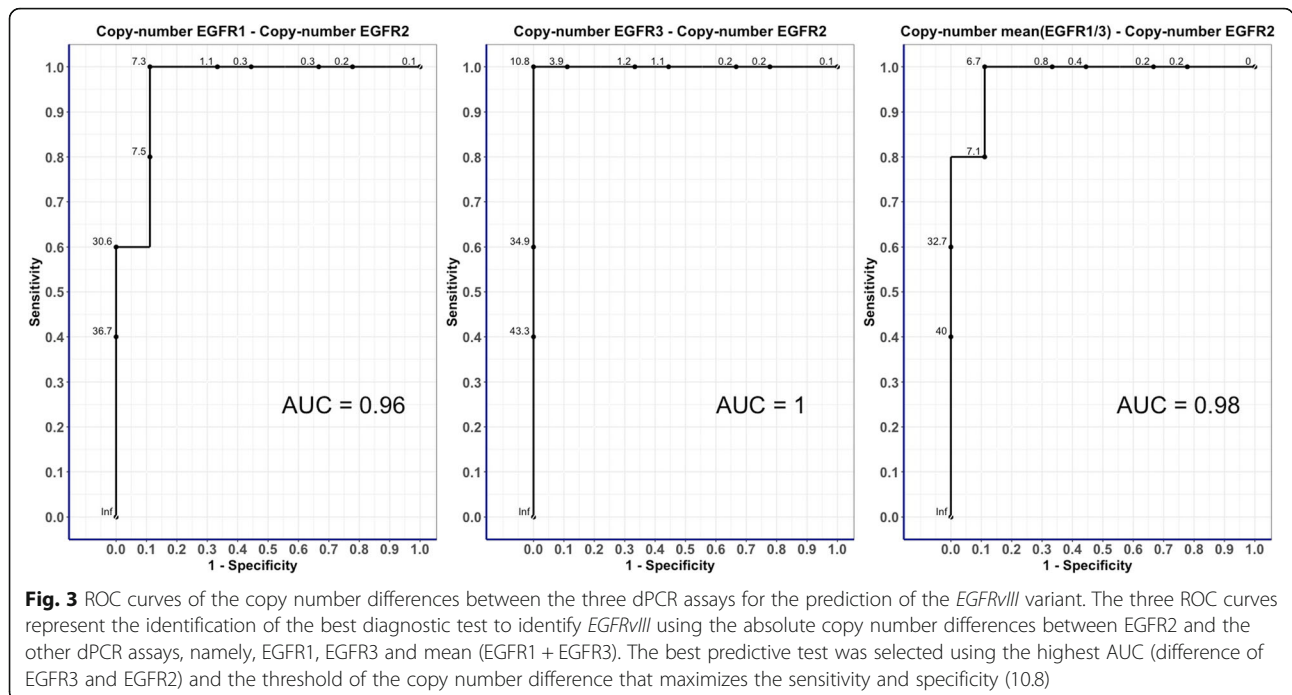
A total of 43 patients were included in the validation cohort. Among them, 19/43 (44%) were *EGFR*-amplified *IDH-wt* glioblastomas using FISH (19/43, 44%). Using the dPCR assay, based on the *EGFR3* assay, the same 19 patients with an *EGFR* amplification were identified, leading to a sensitivity, specificity, positive and negative predictive values of 100%. The mean estimated copy number was 56.9 (range 13.6–196.5), and the median was 48.7. The *EGFR3* assay allowed for the identification of *EGFR* copy gain in 16 *EGFR*-non-amplified glioblastomas with a mean copy number of 3.3 (range 2.6–3.9). A single patient harbored an *EGFR*

amplification in 5% of tumor cell nuclei (Additional File: Fig. S3), and this was considered non-amplified both by FISH and by dPCR. Among the 19 *EGFR*-amplified glioblastomas, *EGFRvIII* was identified in 8 patients by dPCR *EGFR2/EGFR3* assay, and all were confirmed using LD-RT-PCR.

Interestingly, two *EGFR*-amplified glioblastomas, identified by dPCR and confirmed by FISH, had very low amount of DNA (2 ng and 6 ng). One tumor had concomitant *EGFRvIII* variant confirmed by LD-RT-PCR, highlighting the value of the dPCR-based method for glioblastoma samples with small amount of DNA.

Cost estimation of dPCR

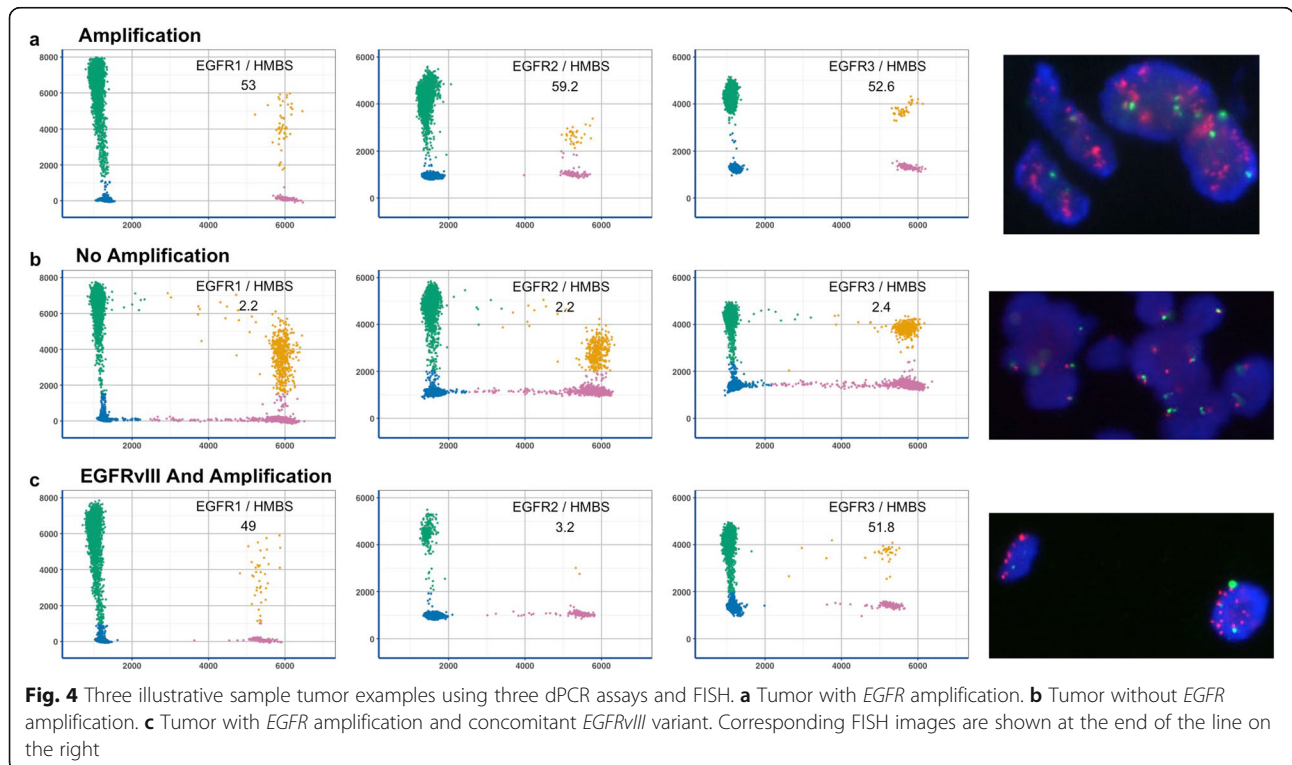
The estimated cost for one patient (CNV detected in *EGFR1*, *EGFR2* and *EGFR3*) was 43% lower using dPCR than FISH (60.88€: 30.33€ for reagents and 30.55€ for working time) for dPCR and 106.01€ for FISH)



(Additional File: Table S4). The total cost of dPCR decreased to 50.77€ when only EGFR2 and EGFR3 assays were used. Moreover, dPCR assays with EGFR2/EGFR3 detect both the *EGFR* amplification and *EGFRvIII* variant, whereas the FISH assay can only identify an *EGFR* amplification.

Discussion

This study shows that the specific dPCR assay using LNA-hydrolysis probes from UPL® is a reliable and simple method to simultaneously detect an *EGFR* amplification and *EGFRvIII* variant, and this can be used in clinical practice in glioblastoma. Indeed, using an



experimental design based on two independent cohorts, we showed that the dPCR assay was better than standard methods and was able to detect the main somatic *EGFR* alterations in DNA extracted from FFPE tumor samples with a diagnostic performance of 100%.

The current molecular findings in our work were similar to those previously published using larger cohorts of glioblastoma patients eligible for Stupp treatment [22, 23]. Indeed, the overall proportion of *EGFR*-amplified tumors is similar to that reported in the TCGA (43%) [4], especially when accounting for the criteria recently suggested by French et al. to classify tumors as *EGFR* amplified (*EGFR* copy number higher than 5 and more than 50% of the nuclei were amplified) [7]. Moreover, it has also been recently confirmed that the proportion of patients with *EGFR*-amplified glioblastoma using NGS, FFPE-based or CGH-array techniques is between 35 and 45% [24, 25]. One of the major strengths of our study is that, in addition to the qualitative assessment of *EGFR* amplification, the dPCR assay using LNA-hydrolysis probes also provides a reliable quantitative copy number estimation compared to NGS. We also confirmed the high number of *EGFR* copy number amplicons in glioblastoma, including 13% of tumors ($n = 8$) with greater than 50 copy gains. Although the therapeutic impact of high *EGFR*-amplified tumors remains to be evaluated, our results clearly showed that our dPCR assay may be used to screen the *EGFR* copy number for decision making, particularly in further studies focusing on therapies targeting this molecular alteration.

One of the other benefits of the dPCR assay developed in our work is its potential economic cost compared to FISH. For one patient, the cost decreases from 40 to 50% when using only the *EGFR2/EGFR3* assay. Moreover, in contrast to FISH, dPCR allows the simultaneous detection of the *EGFRvIII* variant, which has been shown to be a potential therapeutic target [26]. Lower copy number values observed between *EGFR2* and *EGFR3* amplicons are very likely explained by the presence of the *EGFRvIII* variant. The *EGFR3* amplicon is not located in a specific gene region affected by recurrent splicing variants or deletions but is located between exon 25 and the C-terminal region. The qualitative discrepancy between *EGFR1* and *EGFR2* amplicons for detecting the gene copy number from the same tumor is probably due to breakpoint variability of the *EGFRvIII* variant. The *EGFR1* amplicon is located at the start of intron 1 in an area containing various breakpoints for the *EGFRvIII* splicing variant [27]. The *EGFR1* amplicon may therefore match with tumor DNA if the breakpoint is closer to exon 2 but may mismatch with the tumor DNA if the breakpoint is closer to exon 1. As shown in our results, the value of using *EGFR2* resides in its location within the spliced area, regardless of the breakpoint. Therefore, the comparison of the copy number estimation using

EGFR2 and *EGFR3* assays should be a more sensitive method than dPCR using an amplicon located at the end of exon 1 [27, 28].

NGS-based CNV identification using panels dedicated to glioblastoma has been demonstrated to be as sensitive as FISH or CGH array [25, 29]. In our exploratory cohort, the diagnostic performance for the detection of *EGFR* amplification was 100% when comparing dPCR and *EGFR*-targeted NGS. The major advantage of NGS resides in the fact that a single assay may detect somatic point mutations and multiple CNVs. However, the cost of a single NGS assay remains high, which currently hampers its routine use. Moreover, it has also been reported that multiple CNVs may be easily detected with the LNA-probe hydrolysis dPCR method without any proportional cost increase, for example, the concomitant detection of other amplicons located on *MET*, *PDGFRA*, *KIT*, *AKT1* or *CDKN2A* homozygous deletion [30]. Moreover, the quantity of tumor DNA necessary is lower for dPCR than for NGS, making this technique more suitable for small tumor fragments, including those derived from biopsies or fragments containing low amounts of tumor DNA, notably in the case of tumor necrosis. Detection of CNV by NGS requires the comparison between patient-matched and unmatched normal tissue. In the specific situation of *EGFR* amplification detection in glioblastoma sample, the ideal comparison tissue should have been healthy brain tissue, which is virtually impossible to obtain in daily practice [31, 32]. The major advantage of dPCR use is that there is no need for healthy brain tissue since *HMBS* reference gene is not altered in tumor samples.

At last, our results are based on experiments using LNA-probes provided by Roche®. The experimental procedure is not restricted to specific manufacturer's probes and could easily be used with other manufacturers' LNA-probes provided that these probes are designed to be used at a hybridization temperature of 56 °C.

In conclusion, our results highlight that the dPCR assay using LNA-hydrolysis probes allowed the simultaneous detection of the *EGFR* amplification and *EGFRvIII* variant and may be used routinely in patients treated for glioblastoma.

Supplementary information

Supplementary information accompanies this paper at <https://doi.org/10.1186/s40478-020-00917-6>.

Additional file 1: Supplementary Table. Details of *EGFR* amplicons by NGS.

Additional file 2: Supplementary Data. Results of LD-RT-PCR for *EGFRvIII* detection.

Additional file 3.

Additional file 4: Supplementary Material: cost evaluation of FISH method.

Abbreviations

aCGH: Array-comparative genomic hybridization; CNV: Copy number variation; dPCR: Digital PCR; ddPCR: Droplet digital PCR; *EGFR*: *Epidermal Growth Factor Receptor*; *EGFRvIII*: *EGFR* variant III; FISH: Fluorescence in situ hybridization; *HMBS*: *Hydroxymethylbilane synthase*; LD-RT-PCR: Ligation-dependent reverse transcription polymerase chain reaction; LNA: Locked nucleic acid; *IDH*: *Isocitrate dehydrogenase*; *MGMT*: *O-6-methylguanine-DNA methyltransferase*; NGS: Next-generation sequencing; ROC: Recursive operating curve; *TERT*: *Telomerase reverse transcriptase*; UPL: Universal Probe Library®; wt: Wild-type

Authors' contributions

MF, FC and NSV conceived the study, organized the technical support and analyzed the data. MF, NSV, FC, FM, AL and FDF wrote the manuscript; MF, DR, CA, IT, OL, FDF, FC enrolled patients; FM, PR, CB, AD, LB, MV, PJV contributed to experiment performance for FISH and LD-RT-PCR. KC and PC designed dPCR experiments and developed dPCR-based method to detect somatic CNA. All authors contributed to and approved the final manuscript.

Funding

This project was supported by the Institute of Research and Innovation in Biomedicine of Normandy (IRIB, Rouen, Normandie, France) and by Cancer Center Henri Becquerel.

Availability of data and materials

Deidentified data are available on request.

Ethics approval and consent to participate

An informed written consent to participate to the study was obtained from all patients and the French National Committee for the Protection of Persons approved the study (RCB ID 2015- A00377–42).

Consent for publication

Not applicable.

Competing interests

Maxime Fontanilles: Reports Honoraria from Bristol-Myers Squibb® and Congress Fee from La Roche-Hauffman®.

Author details

¹Inserm U1245, Normandie Univ, UNIROUEN, IRON group, Normandy Centre for Genomic and Personalized Medicine, Rouen University Hospital, F-76031 Rouen, France. ²Department of Medical Oncology, Cancer Centre Henri Becquerel, Rue d'Amiens, F-76038 Rouen, France. ³Inserm U1245, Normandie Univ, UNIROUEN, Normandy Centre for Genomic and Personalized Medicine, Rouen University Hospital, F-76031 Rouen, France. ⁴Department of Pathology, Rouen University Hospital, F-76031 Rouen, France. ⁵Department of Genetics, Inserm U1245, Normandie Univ, UNIROUEN, Normandy Centre for Genomic and Personalized Medicine, Rouen University Hospital, F-76031 Rouen, France. ⁶Department of Statistics and Clinical Research Unit, Cancer Centre Henri Becquerel, Rouen F-76038, France. ⁷Department of Neurosurgery, Rouen University Hospital, F-76031 Rouen, France. ⁸Department of Gastroenterology, Rouen University Hospital, F-76031 Rouen, France.

Received: 29 January 2020 Accepted: 13 March 2020

Published online: 17 April 2020

References

- Ostrom QT, Gittleman H, Liao P, Vecchione-Koval T, Wolinsky Y, Kruchko C et al (2017) CBTRUS statistical report: primary brain and other central nervous system tumors diagnosed in the United States in 2010-2014. *Neuro-oncology*. 19:v1–v88
- Stupp R, Mason WP, van den Bent MJ, Weller M, Fisher B, Taphoorn MJB et al (2005) Radiotherapy plus concomitant and adjuvant temozolomide for glioblastoma. *N Engl J Med* 352:987–996
- Louis DN, Perry A, Reifenberger G, von Deimling A, Figarella-Branger D, Cavenee WK et al (2016) The 2016 World Health Organization classification of tumors of the central nervous system: a summary. *Acta Neuropathol* 131:803–820
- Brennan CW, Verhaak RGW, McKenna A, Campos B, Noushmehr H, Salama SR et al (2013) The somatic genomic landscape of glioblastoma. *Cell*. 155:462–477
- Quan AL, Barnett GH, Lee S-Y, Vogelbaum MA, Toms SA, Staugaitis SM et al (2005) Epidermal growth factor receptor amplification does not have prognostic significance in patients with glioblastoma multiforme. *Int J Radiat Oncol Biol Phys* 63:695–703
- Lassman AB, Aldape KD, Ansell PJ, Bain E, Curran WJ, Eoli M et al (2019) Epidermal growth factor receptor (EGFR) amplification rates observed in screening patients for randomized trials in glioblastoma. *J Neuro-Oncol* 144:205–210
- French PJ, Eoli M, Sepulveda JM, de Heer I, Kros JM, Walenkamp A, et al (2019) Defining EGFR amplification status for clinical trial inclusion. *Neuro-oncology* 21(10):1263-1272.
- An Z, Aksoy O, Zheng T, Fan Q-W, Weiss WA (2018) Epidermal growth factor receptor and EGFRvIII in glioblastoma: signaling pathways and targeted therapies. *Oncogene*. 37:1561–1575
- Weller M, Butowski N, Tran DD, Recht LD, Lim M, Hirte H et al (2017) ACT IV trial investigators. Rindopepimut with temozolomide for patients with newly diagnosed, EGFRvIII-expressing glioblastoma (ACT IV): a randomised, double-blind, international phase 3 trial. *Lancet Oncol* 18:1373–1385
- Uhm JH, Ballman KV, Wu W, Giannini C, Krauss JC, Buckner JC et al (2011) Phase II evaluation of gefitinib in patients with newly diagnosed grade 4 astrocytoma: Mayo/north central Cancer treatment group study N0074. *Int J Radiat Oncol Biol Phys* 80:347–353
- Wen PY, Chang SM, Lamborn KR, Kuhn JG, Norden AD, Cloughesy TF et al (2014) Phase I/II study of erlotinib and temsirolimus for patients with recurrent malignant gliomas: north American brain tumor consortium trial 04-02. *Neuro-oncology*. 16:567–578
- Sepúlveda-Sánchez JM, Vaz MÁ, Balañá C, Gil-Gil M, Reynés G, Gallego Ó et al (2017) Phase II trial of dacomitinib, a pan-human EGFR tyrosine kinase inhibitor, in recurrent glioblastoma patients with EGFR amplification. *Neuro-oncology*. 19:1522–1531
- van den Bent M, Eoli M, Sepulveda JM, Smits M, Walenkamp A, Frenel J-S, et al (2019) INTELLANCE 2/EORTC 1410 randomized phase II study of Depatux-M alone and with temozolomide vs temozolomide or lomustine in recurrent EGFR amplified glioblastoma. *Neuro-oncology*. In press.
- Brat DJ, Aldape K, Colman H, Holland EC, Louis DN, Jenkins RB et al (2018) cIMPACT-NOW update 3: recommended diagnostic criteria for "Diffuse astrocytic glioma, IDH-wildtype, with molecular features of glioblastoma, WHO grade IV". *Acta Neuropathol* 136:805–810
- Stichel D, Ebrahimi A, Reuss D, Schrimpf D, Ono T, Shirahata M et al (2018) Distribution of EGFR amplification, combined chromosome 7 gain and chromosome 10 loss, and TERT promoter mutation in brain tumors and their potential for the reclassification of IDHwt astrocytoma to glioblastoma. *Acta Neuropathol* 136:793–803
- Cassinari K, Quenez O, Joly-Hélas G, Beaussire L, Le Meur N, Castelain M et al (2019) A simple, universal, and cost-efficient digital PCR method for the targeted analysis of copy number variations. *Clin Chem* 65:1153–1160
- Boeva V, Popova T, Lienard M, Toffoli S, Kamal M, Le Tourneau C et al (2014) Multi-factor data normalization enables the detection of copy number aberrations in amplicon sequencing data. *Bioinformatics*. 30:3443–3450
- Bobée V, Ruminy P, Marchand V, Viailly P-J, Abdel Sater A, Veresezan L et al (2017) Determination of molecular subtypes of diffuse large B-cell lymphoma using a reverse transcriptase multiplex ligation-dependent probe amplification classifier: a CALYM study. *J Mol Diagn*. 19:892–904
- Piton N, Ruminy P, Gravet C, Marchand V, Colasse É, Lamy A et al (2018) Ligation-dependent RT-PCR: a new specific and low-cost technique to detect ALK, ROS, and RET rearrangements in lung adenocarcinoma. *Lab Invest* 98:371–379
- Drieux F, Ruminy P, Abdel-Sater A, Lemonnier F, Viailly P-J, Fataccioli V, et al (2019) Defining the signatures of peripheral T-cell lymphoma, with a targeted 20-markers gene expression profiling assay (RT-MLPA). *Haematologica*. In press.
- Chiu A, Ayub M, Dive C, Brady G, Miller CJ (2017) Twoddpcr: an R/ bioconductor package and shiny app for droplet digital PCR analysis. *Bioinformatics*. 33:2743–2745
- Chinot OL, Wick W, Mason W, Henriksson R, Saran F, Nishikawa R et al (2014) Bevacizumab plus radiotherapy-temozolomide for newly diagnosed glioblastoma. *N Engl J Med* 370:709–722
- Gilbert MR, Dignam JJ, Armstrong TS, Wefel JS, Blumenthal DT, Vogelbaum MA et al (2014) A randomized trial of bevacizumab for newly diagnosed glioblastoma. *N Engl J Med* 370:699–708
- Ramkissoon SH, Bi WL, Schumacher SE, Ramkissoon LA, Haidar S, Knoff D et al (2015) Clinical implementation of integrated whole-genome

- copy number and mutation profiling for glioblastoma. *Neuro-oncology*. 17:1344–1355
25. McNulty SN, Cottrell CE, Vigh-Conrad KA, Carter JH, Heusel JW, Ansstas G et al (2019) Beyond sequence variation: assessment of copy number variation in adult glioblastoma through targeted tumor somatic profiling. *Hum Pathol* 86:170–181
 26. Sharifi Z, Abdulkarim B, Meehan B, Rak J, Daniel P, Schmitt J et al (2019) Mechanisms and antitumor activity of a binary EGFR/DNA-targeting strategy overcomes resistance of Glioblastoma stem cells to Temozolomide. *Clin Cancer Res* 25:7594–7608
 27. Koga T, Li B, Figueroa JM, Ren B, Chen CC, Carter BS et al (2018) Mapping of genomic EGFRvIII deletions in glioblastoma: insight into rearrangement mechanisms and biomarker development. *Neuro-oncology*. 20:1310–1320
 28. Saxena D, Sheikh S, Kao G, Binder ZA, Alonso-Basanta M, O'Rourke DM et al (2019) Rapid and ultrasensitive digital PCR (dPCR) profiling of EGFRvIII in tumor cells and tissues. *Neurooncol Adv* 1:vdz030
 29. Zacher A, Kaulich K, Stepanow S, Wolter M, Köhrer K, Felsberg J et al (2017) Molecular diagnostics of Gliomas using next generation sequencing of a Glioma-tailored gene panel. *Brain Pathol* 27:146–159
 30. Miller ML, Tome-García J, Waluszko A, Sidorenko T, Kumar C, Ye F et al (2019) Practical Bioinformatic DNA-sequencing pipeline for detecting oncogene amplification and EGFRvIII mutational status in clinical Glioblastoma samples. *J Mol Diagn*. 21:514–524
 31. Kuśmirek W, Szmurło A, Wiewiórka M, Nowak R, Gambin T (2019) Comparison of kNN and k-means optimization methods of reference set selection for improved CNV callers performance. *BMC Bioinformatics* [cited 2020 Feb 26];20. Available from: <https://www.ncbi.nlm.nih.gov/pmc/articles/PMC6537193/>
 32. Grasso C, Butler T, Rhodes K, Quist M, Neff TL, Moore S et al (2015) Assessing copy number alterations in targeted, amplicon-based next-generation sequencing data. *J Mol Diagn* 17:53–63

Publisher's Note

Springer Nature remains neutral with regard to jurisdictional claims in published maps and institutional affiliations.

Ready to submit your research? Choose BMC and benefit from:

- fast, convenient online submission
- thorough peer review by experienced researchers in your field
- rapid publication on acceptance
- support for research data, including large and complex data types
- gold Open Access which fosters wider collaboration and increased citations
- maximum visibility for your research: over 100M website views per year

At BMC, research is always in progress.

Learn more biomedcentral.com/submissions

