

## Research Article

# Isoliquiritigenin Inhibits Atherosclerosis by Blocking TRPC5 Channel Expression

Jie Qi,<sup>1</sup> Jianguo Cui,<sup>1</sup> Baobin Mi,<sup>1</sup> Xiaohong Yan,<sup>1</sup> Wenwen Xu,<sup>1</sup> Hui Ma,<sup>1</sup> Qingtan Zhang <sup>1</sup> and Fang Xu <sup>2</sup>

<sup>1</sup>Department of Geriatrics, Binzhou Medical University Hospital, No. #661 Yellow River Road No. 2, Binzhou, Shandong 256603, China

<sup>2</sup>Department of Pathophysiology, Binzhou Medical University, 346# Guanhai Road, Yantai, Shandong 264003, China

Correspondence should be addressed to Qingtan Zhang; qtzhangby@126.com and Fang Xu; xufang1979@163.com

Received 27 August 2019; Revised 4 February 2020; Accepted 17 February 2020; Published 7 April 2020

Guest Editor: Annalisa Noce

Copyright © 2020 Jie Qi et al. This is an open access article distributed under the Creative Commons Attribution License, which permits unrestricted use, distribution, and reproduction in any medium, provided the original work is properly cited.

Isoliquiritigenin (ISL) is a flavonoid isolated mainly from the licorice plant, a traditional Chinese herb. ISL has shown anticancer, anti-inflammatory, antioxidant, and antidiabetic activities. However, the pharmaceutical effects of ISL on atherosclerosis are seldom explored. In this study, we used apolipoprotein *E* (ApoE) knockout mouse model and angiotensin II- (Ang II-) stimulated vascular smooth muscle cells (VSMCs) to elucidate the pharmacological mechanism of ISL to inhibit atherosclerosis. We found that in ApoE<sup>-/-</sup> mice ISL could attenuate atherosclerotic lesion, reduce serum lipid levels, and inhibit TRPC5 expression. In vitro, ISL inhibited Ang II-stimulated proliferation of VSMCs and suppressed Ang II-induced TRPC5 and PCNA expressions in a dose-dependent fashion. In conclusion, our findings provide novel insight into the pharmacological effects of ISL on atherosclerosis and suggest that ISL is beneficial for cardiovascular protection.

## 1. Introduction

Isoliquiritigenin (ISL) is a flavonoid compound from *Glycyrrhiza glabra*, the licorice plant of the traditional Chinese herb [1]. Studies have shown that isoliquiritigenin has a variety of activities such as anticancer [2], antibacterial [3], antiviral [4], antiasthma [5], anti-inflammatory [6], antidiabetic [7], and antioxidant activities [8]. Furthermore, ISL could reduce low-density lipid (LDL) via antioxidant activity [9]. In addition, ISL has been shown to inhibit the proliferation and induce the apoptosis of tumor cells [10–13].

Vascular smooth muscle cells (VSMCs) play an important role to maintain vascular tension and basic physiological functions in tunica media. In the development of atherosclerosis, VSMCs can transform to dedifferentiated phenotype after intima damage and have increased the ability of proliferation and migration [14]. The phenotype change of VSMCs participates in the process of plaque forming and atherosclerosis acceleration [15]. However,

whether ISL could suppress the proliferation of VSMCs remains obscure.

As an important second messenger, Ca<sup>2+</sup> is controlled by different types of Ca<sup>2+</sup> channels and transporters in the membrane of VSMCs. Among them, store-operated channels (SOCs) can activate the transcription of early response genes and affect the proliferation, migration, and synthesis of excessive extracellular matrix [16]. Transient receptor potential canonical 5 (TRPC5) channel is a representative of SOCs mainly localized in VSMCs and is activated by IP<sub>3</sub> (inositol 1,4,5-trisphosphate) to induce slow and continuous calcium influx [17]. Interestingly, a recent study reported that ISL induced vasodilation by activating Ca<sup>2+</sup>-activated K<sup>+</sup> channels in VSMCs [18]. Therefore, we hypothesized that ISL may modulate the TRPC5 channel to regulate the proliferation of VSMCs. In this study, we used the apolipoprotein *E* (ApoE) model and angiotensin II- (Ang II-) induced VSMCs model to elucidate the pharmacological mechanism of ISL to inhibit atherosclerosis.

## 2. Materials and Methods

**2.1. Animal Model.** All animal experiments were approved by the Animal Care and Use Committee of Binzhou Medical University. C57BL/6J mice and ApoE knockout C57BL mice (male, 6-week-old) were purchased from the Laboratory Animal Center of Peking University (Beijing, China). The mice were bred and maintained in barrier facilities at 24°C–26°C with 12 h light/12 h dark cycle. All mice were treated following the Chinese Institutes of Health Guide for the Care and Use of Laboratory Animals. ApoE<sup>-/-</sup> mice were randomly divided into 2 groups ( $n=20$ ): model group and ISL group, and fed with a regular chow diet (21% fat + 0.15% cholesterol). ISL group mice were lavaged with ISL (20 mg/Kg/d). C57BL/6J mice were chosen to be the control group ( $n=20$ ), which were fed ordinary food. All the mice were killed by euthanasia after 12 weeks.

**2.2. Reagents.** ISL (MB2209, Dalian, China) was purchased from Melone and dissolved in dimethyl sulfoxide (DMSO) to make a stock solution of 0.25 mol/l. Then, it was diluted to the final concentrations in a culture medium, and DMSO final concentration was <0.1% (v/v) to avoid its toxic effect on the growth of cells. Primary antibodies for TRPC5 and MOMA-2 were from Abcam,  $\alpha$ -SMA antibody was from Bioss (China), proliferating cell nuclear antigen (PCNA) antibody was from Affinity, and GAPDH antibody was from Epitomics.

**2.3. Blood Lipid Analysis.** The retro-orbital plexus method was used to obtain blood samples. Serum levels of total cholesterol (TC), triglyceride (TG), high-density lipoprotein cholesterol (HDL-C), and low-density lipoprotein cholesterol (LDL-C) were measured by using commercial enzymatic methods with the kits on RX-30 device (Nihon Denshi, Tokyo, Japan).

**2.4. Histology and Morphometric Analyses.** The aortic roots were collected and stored at -80°C. Samples were sliced into 25 sections (10  $\mu$ m thick). The sections were stained with hematoxylin-eosin, and plaque area (PA), luminal area (LA), and the percentage of corrected plaque area (PA/LA) were measured using Image-Pro Plus software. In addition, the sections were subjected to immunohistochemical (IHC) staining with TRPC5 and integrated option density (IOD) of TRPC5 staining was measured using Image-Pro Plus software.

**2.5. Cell Culture.** VSMCs were isolated from C57BL/6J mice thoracic aorta as described (Rodriguez et al., 2007). Cells were cultured in Dulbecco's modified Eagle's medium (DMEM)/high glucose (HyClone, USA) supplemented with 20% fetal bovine serum (FBS, Gibco, USA) in a humid atmosphere with 5% CO<sub>2</sub> at 37°C. VSMCs were characterized by  $\alpha$ -actin immunocytochemistry assay (Bioss, Beijing, China). Cells from generations 4–9 were used for the experiments. VSMCs were divided into 5 groups: control

group (treated with 2% FBS), Ang II 10<sup>-6</sup> mol/l group (treated with angiotensin II at 10<sup>-6</sup> mol/l), Ang II 10<sup>-6</sup> mol/l + 10  $\mu$ mol/l ISL group, Ang II 10<sup>-6</sup> mol/l + 20  $\mu$ mol/l ISL group, Ang II 10<sup>-6</sup> mol/l + 40  $\mu$ mol/l ISL group, and Ang II 10<sup>-6</sup> mol/l + 60  $\mu$ mol/l ISL group.

**2.6. Cell Proliferation Assay.** VSMCs were seeded at 2,000 cells/well in 96-well plates overnight. After the treatment, cells were incubated with 10  $\mu$ l/ml CCK8 for 4 h, and then the absorbance at 450 nm was measured using a reader.

**2.7. PCR.** Total RNA was extracted from aorta using Trizol. Real-time PCR was performed using SYBR Green on a Rotor-Gene 3000 Run StepOnePlus™ Real-Time PCR System (Corbett, Australia). The sequences of primers were as follows: TRPC5, forward 5'-ACAAAAAGGTCAACTACTCACCG-3', reverse 5'-CAGTGGCATAGTCCCCCTTCT-3'; GAPDH, forward 5'-AACTGCTTAGCACCCCTGGC-3', reverse 5'-ATGACCTTGCCCACACAGCCCTT-3'. Quantitative measurements were determined using the  $\Delta\Delta$ Ct method and GAPDH was used as an internal control.

**2.8. Western Blot Analysis.** Proteins were extracted and 40  $\mu$ g from lysates per lane was loaded on a 10% SDS-polyacrylamide electrophoresis gel and then electrophoresed and transferred onto polyvinylidene fluoride (PVDF) membranes. The membranes were blotted with specific antibodies against TRPC5, PCNA, and GAPDH at 4°C overnight and then incubated with horseradish peroxidase-conjugated secondary antibody for 1 h. Immunoreactivity was detected by using the enhanced chemiluminescence (ECL) method. Protein content was calculated by densitometry using LabWorks software.

**2.9. Statistical Analysis.** All data are presented as mean  $\pm$  SD and analyzed by SPSS 13.0 software. For comparison among groups, one-way ANOVA was applied, followed by LSD test.  $P < 0.05$  was regarded as significant.

## 3. Results

**3.1. ISL Improved the Health Condition in ApoE<sup>-/-</sup> Mice.** The general condition of the control group was the best in all mice. ApoE<sup>-/-</sup> mice in the AS model group showed the lowest growth and the weight increased faster (Figures 1(a) and 1(b)). Compared to the AS model group, ApoE<sup>-/-</sup> mice in the ISL group had better body mass index (BMI) at 12–18 weeks (Figure 1(c),  $P < 0.05$ ).

**3.2. ISL Improved Blood Lipids and Atherosclerosis Lesion in ApoE<sup>-/-</sup> Mice.** HE staining indicated that the atherosclerosis model group had unstable plaques which were diffusing all the lumen of aortas, but they were improved in the ISL group (Figure 2(a)). Serum levels of TC, TG, and LDL-C were the highest while HDL-C level was the lowest in atherosclerosis model group. TC, TG, and LDL-C levels significantly

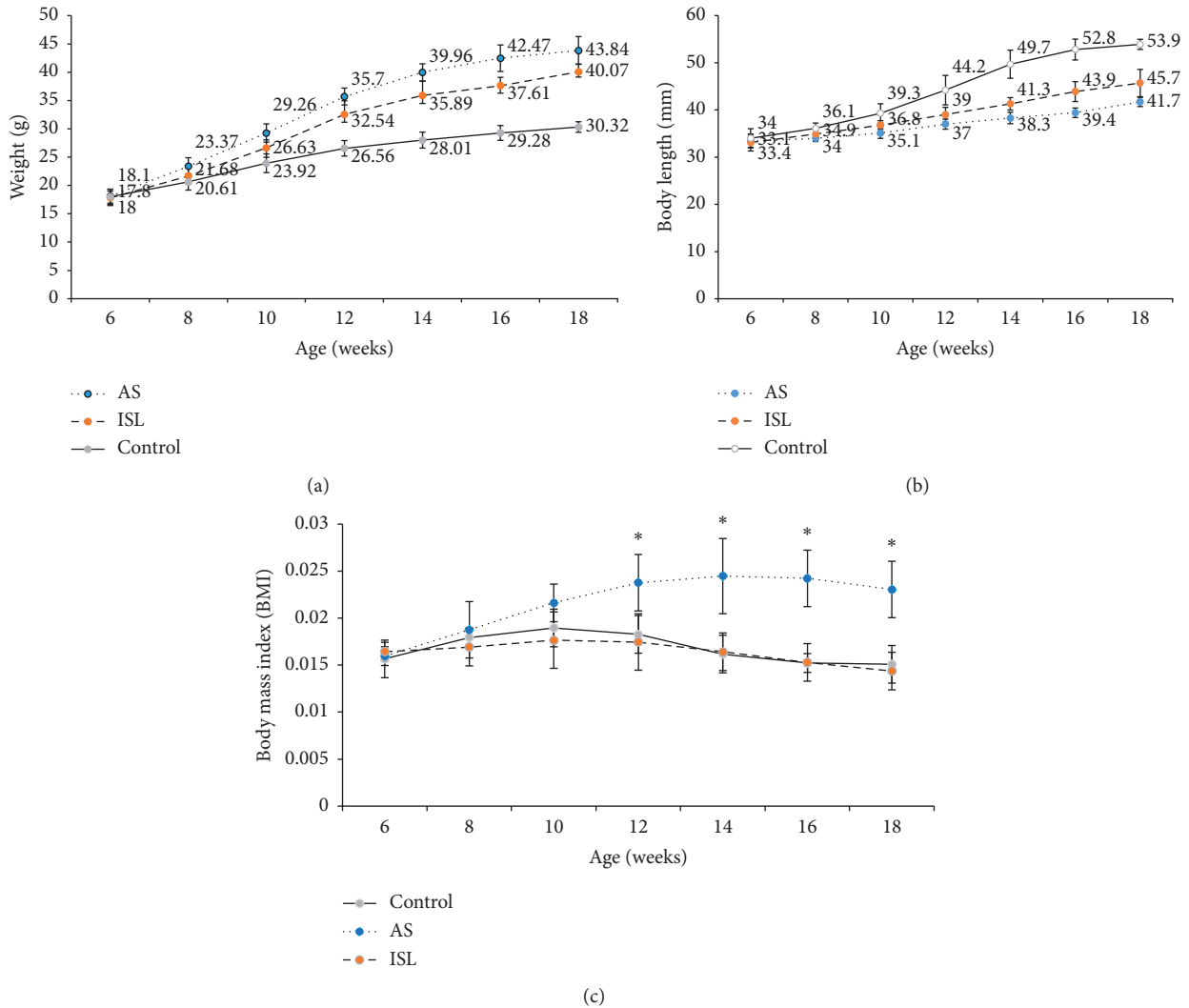


FIGURE 1: Body weight and length and body mass index of mice in three groups ( $n=20$ ). (a) Body weight in different groups of mice of different ages. (b) Body length in different groups of mice of different ages. (c) Body mass index (BMI) in different groups of mice of different ages. Control: control group; AS: atherosclerosis group; ISL: isoliquritigenin group. \* $P < 0.05$  compared to AS at the age of 12, 14, 16, and 18 weeks.

declined and the HDL-C level increased in the ISL group compared with the model group (Figure 2(b)). The aortic intima of the model group was thickened, and plaque formation, significant luminal stenosis, more lipid pools, and meager fibrous caps within plaques were observed in the model group. In contrast, these lesions were slight, plaque areas were small, lipid pools were thin, and fewer foam cells and inflammatory cells were found in the ISL group, and plaque area was reduced (Figures 2(c)–2(e)).

**3.3. ISL Inhibited TRPC5 Expression in Atherosclerosis Model Mice.** Immunohistochemical analysis showed that TRPC5 was located both in tunica media and in VSMCs which migrated into artery intima (Figures 3(a) and 3(b)). TRPC5 staining was significantly stronger in the model group compared to the control group but was significantly weaker

in the ISL group compared to the model group (Figure 3(c)). PCR analysis confirmed that the relative TRPC5 mRNA level was significantly higher in the model group compared to the control group but was significantly lower in the ISL group compared to the model group (Figure 3(d)).

**3.4. ISL Inhibited Ang II-Induced Proliferation of VSMCs.** We isolated VSMCs from C57BL/6J mice aorta and immunocytochemistry confirmed the identification of VSMCs (Figure 4(a)). CCK8 assay showed that VSMCs proliferation was activated by angiotensin II. However, Ang II-stimulated VSMCs proliferation was inhibited by ISL in a concentration-dependent manner (Figure 4(b)).

**3.5. ISL Inhibited TRPC5 and PCNA Expression in Ang II-Stimulated VSMCs.** Real-time PCR showed that Ang II

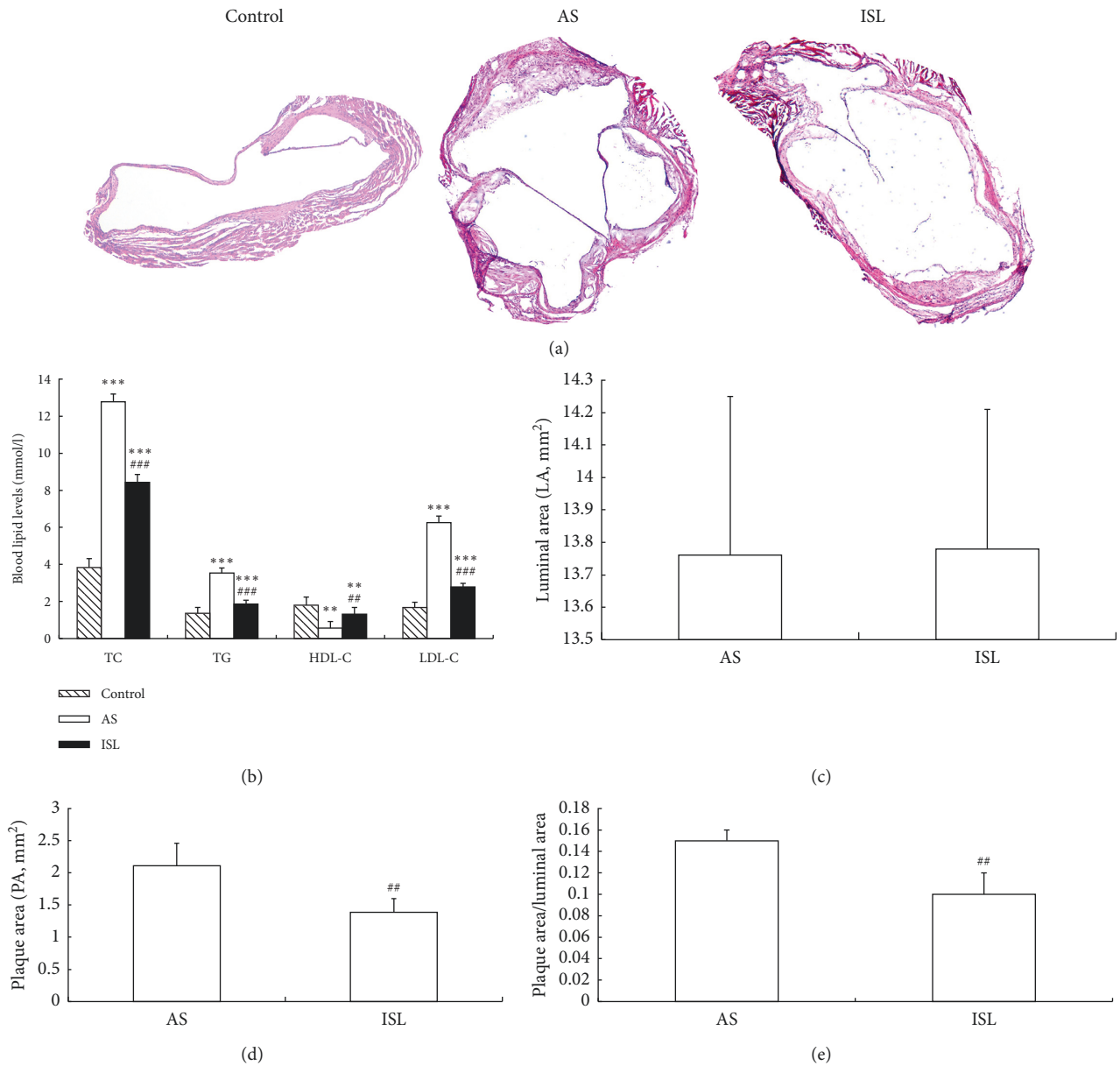


FIGURE 2: Histology and morphometric analyses of atherosclerotic lesion ( $n = 20$ ). (a) HE staining of aortic tissues ( $\times 40$ ). No obvious aortic lesion was observed in control group. AS group showed unstable plaques which were diffusing all the lumen of aortas, but they were improved in ISL group. (b) The levels of blood lipids (unit as mM) in different groups. (c) Comparison of luminal area (LA, unit as  $\text{mm}^2$ ) in AS and ISL groups. (d) Comparison of plaque area (PA, unit as  $\text{mm}^2$ ) in AS and ISL groups. (e). Comparison of the ratio of PA/LA in AS and ISL groups. \*\* $P < 0.01$ , \*\*\* $P < 0.001$ , compared to control group; ## $P < 0.01$ , compared to AS group. Control: control group; AS: atherosclerosis group; ISL: isoliquiritigenin group.

significantly induced the expression of TRPC5 mRNA in VSMCs, but ISL reduced Ang II-stimulated TRPC5 mRNA expression (Figure 5(a)). Western blot analysis showed that Ang II significantly induced the expression of TRPC5 protein in VSMCs, but ISL reduced Ang II-stimulated TRPC5 protein expression (Figures 5(b) and 5(c)). In addition, Ang II significantly induced the expression of PCNA protein in VSMCs, but ISL reduced Ang II-stimulated PCNA protein expression (Figure 5(d)).

#### 4. Discussion

*Glycyrrhiza glabra* (Licorice) is a traditional medicinal herb widely used with many pharmaceutical effects [19]. ISL is a flavonoid compound isolated from this plant and has a variety of activities [20]. However, the pharmaceutical effects of ISL on atherosclerosis have not been explored. Therefore, in this study, we chose ApoE knockout mice as an atherosclerosis model to investigate the anti-atherosclerosis effects of ISL.

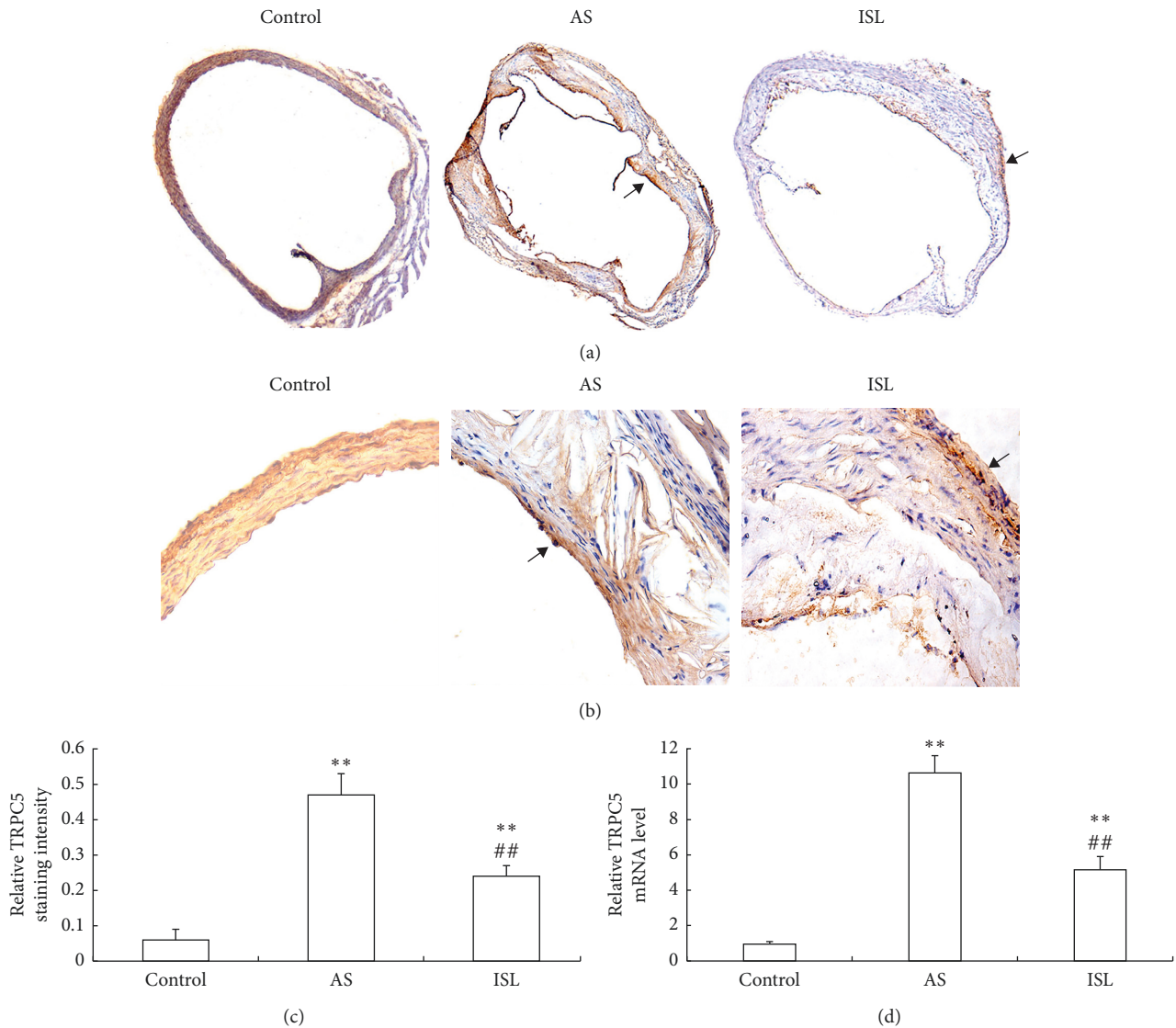


FIGURE 3: TRPC5 expression in mice of three groups. (a) TRPC5 staining in aortas of each group ( $\times 40$ ). Staining area was indicated by the arrows. (b) TRPC5 staining in aortas of each group ( $\times 400$ ). Staining area was indicated by the arrows. (c) Comparison of TRPC5 staining intensity in different groups. (d) Comparison of TRPC5 mRNA levels in different groups. \*\* $P < 0.01$ , compared to control group; ## $P < 0.01$ , compared to AS group. Control: control group; AS: atherosclerosis group; ISL: isoliquiritigenin group.

In the present study, we found that ISL could regulate blood lipids of ApoE<sup>-/-</sup> mice. A previous study showed that licorice flavonoid oil could regulate the expression of lipid metabolism-related genes to ameliorate hyperlipidemia of C57BL/6J mice [21]. Our results showed that ISL significantly improved the weight and blood lipids in ApoE<sup>-/-</sup> mice fed with a high-fat diet. Furthermore, ISL could inhibit TRPC5 expression not only in high-fat diet-induced atherosclerosis model but also in primary VSMCs stimulated by angiotensin II.

It is known that phenotype changes in VSMCs promote the formation of atherosclerosis [22, 23]. Proliferation and migration of VSMCs are critical for plaque formation and atherosclerosis development. TRPC5 is the main subtype of store-operated channels in the aorta and can be activated by inositol 1,4,5-triphosphate (IP<sub>3</sub>), leading to continuous

calcium influx [17]. TRPC5 could regulate the function of VSMCs [24, 25]. Oxidized low-density lipoprotein (ox-LDL), a risk factor accelerating atherosclerosis, was found to promote VSMCs proliferation and migration, and TRPC5 channels were sensitive to antioxidant [26]. In ApoE<sup>-/-</sup> mice, blood lipid deposits on the aorta intima increased ox-LDL to stimulate TRPC5 overexpression. In vitro, angiotensin II induced VSMCs proliferation, and internal Ca<sup>2+</sup> could stimulate TRPC5 channels directly [27]. In our present study, we found that ISL significantly downregulated TRPC5 and PCNA expression in a dose-dependent manner. Thus, we speculate that ISL may inhibit VSMCs proliferation by downregulating TRPC5. However, our study has limitations in that we did not further investigate the signaling pathways which may be responsible for mediating the inhibitory effects of ISL on TRPC5 expression.

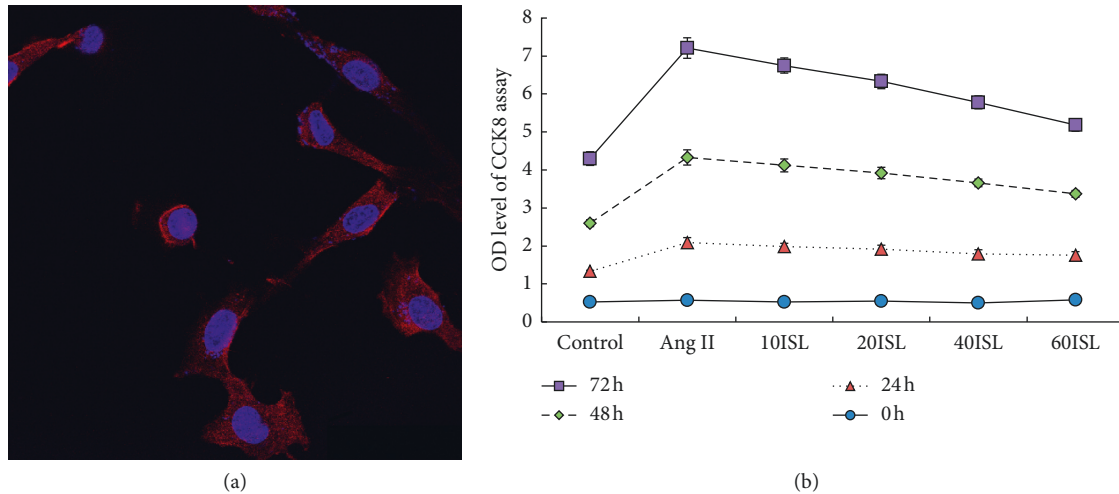


FIGURE 4: ISL inhibited the proliferation of VSMCs. (a) Identification of VSMCs isolated from C57BL/6J mice aortas (staining  $\times 400$ ). (b) CCK8 assay of the proliferation of VSMCs. Values are expressed as means  $\pm$  SD ( $n = 5$ ). Control: control group; Ang II: Ang II group; 10ISL: Ang II  $10^{-6}$  mol/l +  $10 \mu\text{mol/l}$  ISL group; 20ISL: Ang II  $10^{-6}$  mol/l +  $20 \mu\text{mol/l}$  ISL group; 40ISL: Ang II  $10^{-6}$  mol/l +  $40 \mu\text{mol/l}$  ISL group; 60ISL: Ang II  $10^{-6}$  mol/l +  $60 \mu\text{mol/l}$  ISL group.

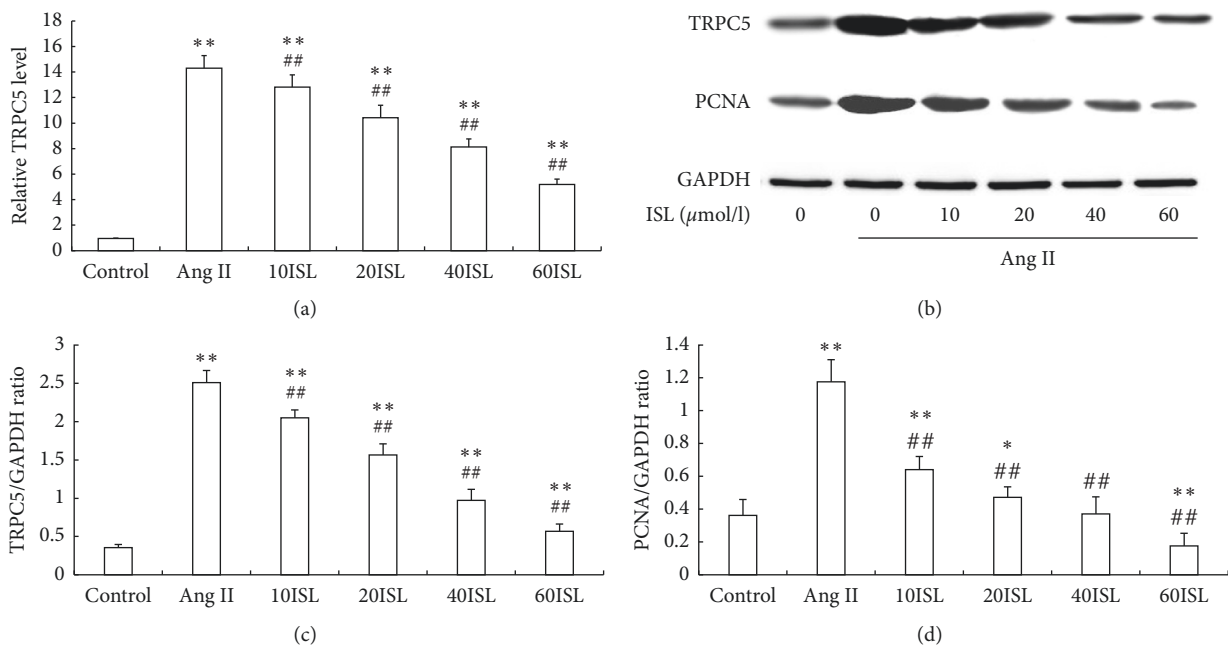


FIGURE 5: ISL inhibited TRPC5 and PCNA expressions in VSMCs. (a) The mRNA levels of TRPC5 in different groups. (b) The protein levels of TRPC5 and PCNA were determined by Western blot analysis. GAPDH was loading control. The representative images were shown from 5 independently performed tests. (c) Densitometry analysis of TRPC5 protein expression. (d) Densitometry analysis of PCNA protein expression. Values are expressed as means  $\pm$  SD ( $n = 5$ ). \*\* $P < 0.01$ , compared to control group; ## $P < 0.01$ , compared to Ang II group. Control: control group; Ang II: Ang II group; 10ISL: Ang II  $10^{-6}$  mol/l +  $10 \mu\text{mol/l}$  ISL group; 20ISL: Ang II  $10^{-6}$  mol/l +  $20 \mu\text{mol/l}$  ISL group; 40ISL: Ang II  $10^{-6}$  mol/l +  $40 \mu\text{mol/l}$  ISL group; 60ISL: Ang II  $10^{-6}$  mol/l +  $60 \mu\text{mol/l}$  ISL group.

Interestingly, it was reported that ISL could inhibit NF- $\kappa$ B and mitogen-activated protein kinases (MAPK) signal pathways [28]. It has been confirmed that the activation of NF- $\kappa$ B and MAPK pathways accelerates the atherosclerosis process and promotes VSMCs proliferation and migration [29]. Oxidative stress and calcium influx may also affect TRPC5 expression. Therefore, further studies are needed to

reveal the mechanisms by which ISL modulates TRPC5 expression and inhibits atherosclerosis.

In conclusion, we demonstrate that ISL inhibits TRPC5 overexpression not only in a high-fat diet-induced atherosclerosis mouse model but also in primary VSMCs stimulated by angiotensin II. Furthermore, ISL improved atherosclerosis in the mouse model and inhibited the

proliferation of primary VSMCs. These findings provide novel insight into the pharmacological effects of ISL on atherosclerosis and suggest that ISL is beneficial for cardiovascular protection.

## Data Availability

All data are available upon request from the corresponding authors.

## Conflicts of Interest

The authors declare that they have no conflicts of interest.

## Authors' Contributions

Jie Qi and Jianguo Cui contributed equally to this work.

## Acknowledgments

The present study was supported by the National Natural Science Foundation of China (no. 81401625) and the Initial Foundation of Binzhou Medical University (BY2009KYQD05).

## References

- [1] F. Peng, Q. Du, C. Peng et al., "A review: the pharmacology of isoliquiritigenin," *Phytotherapy Research*, vol. 29, no. 7, pp. 969–977, 2015.
- [2] V. R. Yadav, S. Prasad, B. Sung, and B. B. Aggarwal, "The role of chalcones in suppression of NF- $\kappa$ B-mediated inflammation and cancer," *International Immunopharmacology*, vol. 11, no. 3, pp. 295–309, 2011.
- [3] X. Zhao, W. Mei, M. Gong, W. Zuo, H. Bai, and H. Dai, "Antibacterial activity of the flavonoids from *Dalbergia odorifera* on *Ralstonia solanacearum*," *Molecules*, vol. 16, no. 12, pp. 9775–9782, 2011.
- [4] C. Zhan and J. Yang, "Protective effects of isoliquiritigenin in transient middle cerebral artery occlusion-induced focal cerebral ischemia in rats," *Pharmacological Research*, vol. 53, no. 3, pp. 303–309, 2006.
- [5] N. Yang, S. Patil, J. Zhuge et al., "Glycyrrhiza uralensis Flavonoids present in anti-asthma formula, ASHMITM, inhibit memory Th2 responses in vitro and in vivo," *Phytotherapy Research*, vol. 27, no. 9, pp. 1381–1391, 2013.
- [6] M. H. Yang, J. Kim, I. A. Khan, L. A. Walker, and S. I. Khan, "Nonsteroidal anti-inflammatory drug activated gene-1 (NAG-1) modulators from natural products as anti-cancer agents," *Life Sciences*, vol. 100, no. 2, pp. 75–84, 2014.
- [7] R. Gaur, K. S. Yadav, R. K. Verma, N. P. Yadav, and R. S. Bhakuni, "In vivo anti-diabetic activity of derivatives of isoliquiritigenin and liquiritigenin," *Phytomedicine*, vol. 21, no. 4, pp. 415–422, 2014.
- [8] H. Chen, B. Zhang, X. Yuan et al., "Isoliquiritigenin-induced effects on Nrf2 mediated antioxidant defence in the HL-60 cell monocytic differentiation," *Cell Biology International*, vol. 37, no. 37, pp. 1215–1224, 2013.
- [9] B. Fuhrman, N. Volkova, M. Kaplan et al., "Antiatherosclerotic effects of licorice extract supplementation on hypercholesterolemic patients: increased resistance of LDL to atherogenic modifications, reduced plasma lipid levels, and decreased systolic blood pressure," *Nutrition*, vol. 18, no. 3, pp. 268–273, 2002.
- [10] H. Chen, B. Zhang, Y. Yao et al., "NADPH oxidase-derived reactive oxygen species are involved in the HL-60 cell monocytic differentiation induced by isoliquiritigenin," *Molecules*, vol. 17, no. 11, pp. 13424–13438, 2012.
- [11] D.-c. Kim, S. Ramachandran, S.-h. Baek et al., "Induction of growth inhibition and apoptosis in human uterine leiomyoma cells by isoliquiritigenin," *Reproductive Sciences*, vol. 15, no. 6, pp. 552–558, 2008.
- [12] K.-L. Wang, S.-M. Hsia, C.-J. Chan et al., "Inhibitory effects of isoliquiritigenin on the migration and invasion of human breast cancer cells," *Expert Opinion on Therapeutic Targets*, vol. 17, no. 4, pp. 337–349, 2013.
- [13] G.-S. Zhou, L.-J. Song, and B. Yang, "Isoliquiritigenin inhibits proliferation and induces apoptosis of U87 human glioma cells in vitro," *Molecular Medicine Reports*, vol. 7, no. 2, pp. 531–536, 2013.
- [14] A. Rudijanto, "The role of vascular smooth muscle cells on the pathogenesis of atherosclerosis," *Acta Med Indones*, vol. 39, no. 2, pp. 86–93, 2007.
- [15] J. G. Robinson and M. H. Davidson, "Can we cure atherosclerosis?" *Reviews in Cardiovascular Medicine*, vol. 19, no. S1, pp. S20–S24, 2018.
- [16] O. Kudryavtseva, C. Aalkjaer, and V. V. Matchkov, "Vascular smooth muscle cell phenotype is defined by Ca<sup>2+</sup>-dependent transcription factors," *FEBS Journal*, vol. 280, no. 21, pp. 5488–5499, 2013.
- [17] A. Albert, S. Saleh, and W. Large, "Identification of canonical transient receptor potential (TRPC) channel proteins in native vascular smooth muscle cells," *Current Medicinal Chemistry*, vol. 16, no. 9, pp. 1158–1165, 2009.
- [18] Y. Ye, M. Gao, L. Feng, B. Feng, and X. Ma, "Isoliquiritigenin-induced vasodilation by activating large-conductance Ca<sup>2+</sup>-activated K<sup>+</sup> channels in mouse mesenteric arteries," *Clinical and Experimental Pharmacology and Physiology*, vol. 46, no. 11, pp. 1044–1052, 2019.
- [19] S. Zhou, H.-L. Koh, Y. Gao, Z.-y. Gong, and E. J. D. Lee, "Herbal bioactivation: the good, the bad and the ugly," *Life Sciences*, vol. 74, no. 8, pp. 935–968, 2004.
- [20] H. Honda, Y. Nagai, T. Matsunaga et al., "Isoliquiritigenin is a potent inhibitor of NLRP3 inflammasome activation and diet-induced adipose tissue inflammation," *Journal of Leukocyte Biology*, vol. 96, no. 6, pp. 1087–1100, 2014.
- [21] F. Aoki, S. Honda, H. Kishida et al., "Suppression by licorice flavonoids of abdominal fat accumulation and body weight gain in high-fat diet-induced obese C57BL/6J mice," *Bioscience, Biotechnology, and Biochemistry*, vol. 71, no. 1, pp. 206–214, 2007.
- [22] W. F. Liu, C. M. Nelson, J. L. Tan, and C. S. Chen, "Cadherins, RhoA, and Rac1 are differentially required for stretch-mediated proliferation in endothelial versus smooth muscle cells," *Circulation Research*, vol. 101, no. 5, pp. e44–52, 2007.
- [23] L. Chen, Z. Gao, B. Liu, Y. Lv, M. An, and J. Feng, "Circumferential variation in mechanical characteristics of porcine descending aorta," *Biocell*, vol. 42, no. 1, pp. 25–34, 2018.
- [24] N. Aiyar, J. Disa, Z. Ao et al., "Lysophosphatidylcholine induces inflammatory activation of human coronary artery smooth muscle cells," *Mol Cell Biochem*, vol. 295, no. 1–2, pp. 113–120, 2007.
- [25] D. J. Beech, "Bipolar phospholipid sensing by TRPC5 calcium channel," *Biochem Soc Trans*, vol. 35, no. 1, pp. 101–104, 2007.
- [26] J. Naylor, E. Al-Shawaf, L. McKeown et al., "TRPC5 channel sensitivities to antioxidants and hydroxylated stilbenes,"

- Journal of Biological Chemistry*, vol. 286, no. 7, pp. 5078–5086, 2011.
- [27] A. G. Obukhov and M. C. Nowycky, “TRPC5 channels undergo changes in gating properties during the activation-deactivation cycle,” *Journal of Cellular Physiology*, vol. 216, no. 1, pp. 162–171, 2008.
- [28] S. H. Lee, J. Y. Kim, G. S. Seo, Y.-C. Kim, and D. H. Sohn, “Isoliquiritigenin, from *Dalbergia odorifera*, up-regulates anti-inflammatory heme oxygenase-1 expression in RAW264.7 macrophages,” *Inflammation Research*, vol. 58, no. 5, pp. 257–262, 2009.
- [29] P. N. Hopkins, “Molecular biology of atherosclerosis,” *Physiological Reviews*, vol. 93, no. 3, pp. 1317–1542, 2013.