

OPEN

Author Correction: Neglecting diurnal variations leads to uncertainties in terrestrial nitrous oxide emissions

Narasinha J. Shurpali, Üllar Rannik, Simo Jokinen, Saara Lind, Christina Biasi, Ivan Mammarella, Olli Peltola, Mari Pihlatie, Niina Hyvönen, Mari Rätty, Sami Haapanala, Mark Zahniser, Perttu Virkajärvi, Timo Vesala & Pertti J. Martikainen

Correction to: *Scientific Reports* <https://doi.org/10.1038/srep25739>, published online 09 May 2016

This Article contains an error in Figure 2, where the units of the y-axis ‘mg m⁻² hr⁻¹’ should read ‘µg m⁻² hr⁻¹’. The correct Figure 2 appears below as Figure 1.

Published online: 20 April 2020

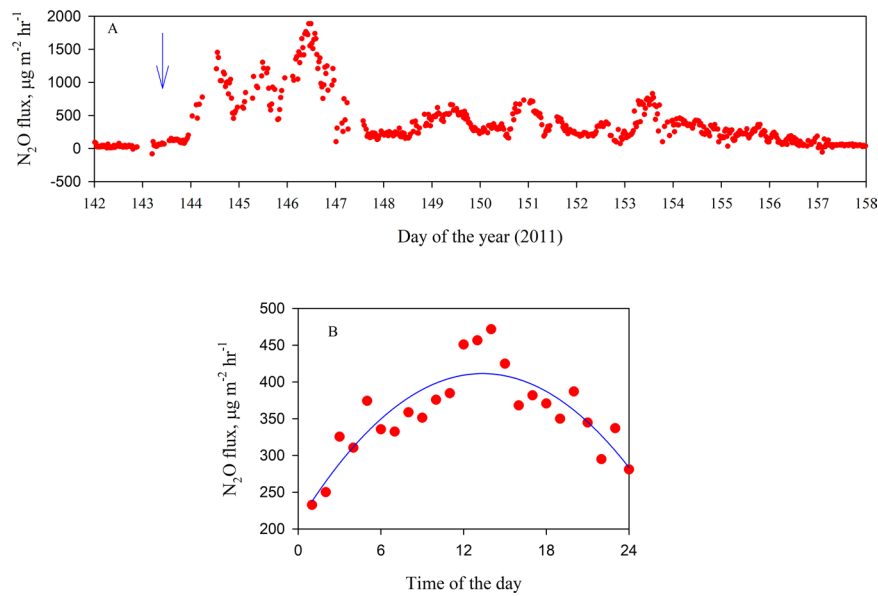



Figure 1.

 **Open Access** This article is licensed under a Creative Commons Attribution 4.0 International License, which permits use, sharing, adaptation, distribution and reproduction in any medium or format, as long as you give appropriate credit to the original author(s) and the source, provide a link to the Creative Commons license, and indicate if changes were made. The images or other third party material in this article are included in the article's Creative Commons license, unless indicated otherwise in a credit line to the material. If material is not included in the article's Creative Commons license and your intended use is not permitted by statutory regulation or exceeds the permitted use, you will need to obtain permission directly from the copyright holder. To view a copy of this license, visit <http://creativecommons.org/licenses/by/4.0/>.

© The Author(s) 2020