



Published in final edited form as:

*Am J Prev Med.* 2020 May ; 58(5): 622–629. doi:10.1016/j.amepre.2019.12.015.

## Alcohol Policies and Motor Vehicle Crash Deaths Involving Blood Alcohol Concentrations Below 0.08%

Marlene C. Lira, BA<sup>1</sup>, Vishnudas Sarda, MBBS, MPH<sup>1</sup>, Timothy C. Heeren, PhD<sup>2</sup>, Matthew Miller, MD, MPH, ScD<sup>3</sup>, Timothy S. Naimi, MD, MPH<sup>1,4</sup>

<sup>1</sup>Section of General Internal Medicine, Boston Medical Center, Boston, Massachusetts

<sup>2</sup>Department of Biostatistics, Boston University School of Public Health, Boston, Massachusetts

<sup>3</sup>Department of Health Sciences, Bouve College of Health Sciences, Northeastern University, Boston, Massachusetts

<sup>4</sup>Department of Community Health Sciences, Boston University School of Public Health, Boston, Massachusetts

### Abstract

**Introduction:** Motor vehicle crashes are a leading cause of injury death in the U.S. Restrictive alcohol policies protect against crashes involving alcohol above the legal blood alcohol concentration of 0.08%. Characteristics of motor vehicle crash fatalities involving blood alcohol concentrations below the limit and their relationships to alcohol control policies have not been well characterized.

**Methods:** Motor vehicle crash fatality data and crash and decedent characteristics from 2000 to 2015 came from the Fatality Analysis Reporting System and were analyzed in 2018–2019. Alcohol Policy Scale scores characterized alcohol policy environments by state-year. Generalized estimating equation alternating logistic regression models assessed these scores and the odds a fatality involved alcohol below the legal threshold.

**Results:** Of 612,030 motor vehicle crash fatalities, 223,471 (37%) died in alcohol-involved crashes, of which 33,965 (15% of alcohol-involved fatalities, or 6% of all fatalities) had a blood alcohol concentration <0.08%. A 10–percentage point increase in Alcohol Policy Scale score, approximating the interquartile range among states, was associated with reduced odds of fatalities involving alcohol <0.08% vs 0.00% (AOR=0.91, 95% CI=0.89, 0.93). These findings held across

---

Address correspondence to: Timothy S. Naimi, MD, MPH, 801 Massachusetts Ave., Second Floor, Boston MA 02118. tim.naimi@bmc.org.

All authors made a substantial contribution to the conception and design of the study, to data acquisition, or to data analysis and interpretation; wrote or critically revised the article; and read and approved the final manuscript. VS conducted the analyses with input from TH. ML drafted the manuscript. TN, MM, TH, and VS provided critical revisions.

**Publisher's Disclaimer:** This is a PDF file of an unedited manuscript that has been accepted for publication. As a service to our customers we are providing this early version of the manuscript. The manuscript will undergo copyediting, typesetting, and review of the resulting proof before it is published in its final form. Please note that during the production process errors may be discovered which could affect the content, and all legal disclaimers that apply to the journal pertain.

Preliminary results of this analysis were presented at the November 2018 American Public Health Association meeting in San Diego, CA.

No financial disclosures were reported by the authors of this paper.

multiple subgroup analyses by decedent and crash characteristics. Similar results were found for odds of alcohol involvement <0.05% vs 0.00% (AOR=0.90, 95% CI=0.88, 0.93), and 0.05% but <0.08% vs <0.05% (AOR=0.93, 95% CI=0.89, 0.96).

**Conclusions:** The number of lower blood alcohol concentration fatalities is substantial. States with more restrictive alcohol policies tend to have reduced odds of lower blood alcohol concentration motor vehicle crashes than states with weaker policies.

## INTRODUCTION

Motor vehicle crashes (MVCs) are a leading cause of injury death in the U.S. In 2017, more than 12,000 MVC fatalities involved a driver with a positive blood alcohol concentration (BAC).<sup>1</sup> There is a strong, graded relationship between BAC and the risk of motor vehicle crashes and crash fatalities, and physiological impairment begins well below the current legal limit of 0.08%, with significantly elevated risk at BACs exceeding 0.02%.<sup>2-8</sup> Restrictive state alcohol policies have been associated with reduced odds of alcohol involvement at or exceeding the legal BAC limit in MVC fatalities among adults and underage youth within the U.S.<sup>9,10</sup>

Because the BAC limit used to legally define impairment is considerably higher than BACs resulting in physiological impairment, crash fatalities associated with BACs below 0.08% may also be caused by alcohol, but are overlooked as a potentially preventable public health problem.<sup>2,6</sup> Although detailed characteristics of fatalities and crash characteristics involving BACs below 0.08% in the U.S. have not been well described, previous research suggests that such crash fatalities are relatively common in the U.S. and in other countries.<sup>2,3,7,9,11,12</sup> For example, a laboratory study of alcohol concentrations and simulated driving found decreased risk taking at BACs of 0.05% compared with 0.08%,<sup>8</sup> and a meta-analysis suggested declines in alcohol-related crashes with the adoption of a 0.05% threshold.<sup>13</sup> Although there has been resistance to changes in legal BAC limits for driving in the past 2 decades,<sup>14,15</sup> the National Transportation Safety Board and the National Academies of Science, Engineering, and Medicine in 2018 recommended reducing the legal BAC limit to 0.05%.<sup>16,17</sup> In December 2018, Utah became the first state to do so.<sup>18</sup>

To address the gap in knowledge around lower BAC crashes and the restrictiveness of the overall alcohol policy environment including policies targeting excessive drinking as well as subsequent driving, a repeated, lagged cross-sectional analysis was conducted involving MVC fatalities with alcohol below the legal limit and alcohol policies within the U.S. The objectives of this study were to: (1) describe alcohol-involved MVC fatalities below the legal BAC limit of 0.08% in comparison with higher BAC fatalities; and (2) analyze the relationship between more restrictive state alcohol policy environments and the odds of alcohol involvement in MCV fatalities involving alcohol below 0.08% compared with no alcohol involvement.

The hypothesis was that stronger state alcohol policy environments would be associated with lower odds of alcohol involvement below the legal limit compared with no alcohol involvement. The relationships between more restrictive state alcohol policy environments

and the odds of alcohol involvement at other BAC thresholds of <0.05% compared with 0% and between 0.05% and 0.08% compared with <0.05% were also examined.

## METHODS

### Study Sample

Data on MVC fatalities from 2000 to 2015 came from the National Highway Traffic Administration's Fatality Analysis Reporting System (FARS),<sup>19</sup> which encompasses a census of MVCs resulting in at least one fatality within 30 days of the crash, occurring on public roadways in all 50 U.S. states, the District of Columbia, and Puerto Rico annually.

Demographic characteristics were extracted for those who died in MVCs, including sex, age, and race/ethnicity; driver/passenger status; and BAC level. Crash data characteristics were also extracted, including number of vehicles, time of day, and day of week. Because BAC levels are not directly measured among all drivers involved in fatal crashes, FARS provides ten imputed sets to address missing BAC levels using a validated multiple imputation technique.<sup>20</sup> Thus, all drivers involved in fatal crashes have either a measured BAC or ten imputed BACs available in the FARS data. Analyses were compared with and without imputed data as a sensitivity analysis.

### Measures

A crash-level BAC was assigned to all fatal crashes based on the highest recorded or imputed BAC of any driver(s) involved in the crash in each of the ten data sets. All fatalities stemming from each fatal crash were assigned its corresponding crash-level BAC, and all fatalities (including drivers, passengers, bikers, and pedestrians) were assessed in the study. For the main analysis, a fatality was considered to have the outcome alcohol-involvement if at least one driver in the crash had a BAC >0.00% but <0.08%. For the secondary analysis, fatalities were considered to have the outcome alcohol involvement if at least one driver in the crash had a BAC >0.00% but <0.05%, or 0.05% but <0.08%.

State alcohol policy environments were characterized using the Alcohol Policy Scale (APS) from 1999 to 2014, the years for which the APS is currently available.<sup>21,22</sup> The APS is currently the only measure of the aggregate policy environment in U.S. states, and allows for the characterization of the state alcohol policy "environment" based on multiple existing policies, weighted by their theoretical efficacy and degree of implementation by state-year. More specifically, APS scores are based on the presence of 29 alcohol policies in each U.S. state, selected by ten alcohol policy experts. A relative efficacy rating was obtained for each policy based on panelist voting; efficacy ratings were invariant by state-year. In addition, a standardized implementation index was developed for each policy; implementation ratings could vary by state-year. The APS includes 21 policies designed to reduce excessive alcohol consumption generally, as well eight policies specifically designed to reduce the likelihood of impaired driving. Policies included in the APS that were rated with highest overall efficacy included taxes, state monopolies, outlet density laws, and wholesale and retail price restrictions. Policies to reduce impaired driving included laws pertaining to administrative license revocation, BAC per se limits, ignition interlocks, and zero tolerance laws. APS

scores are standardized on a scale from 0 to 100, with higher APS scores indicating more restrictive policy environments. The APS has been used to assess the relationship between alcohol policies and alcohol involvement in underage motor vehicle fatalities and binge drinking, among other outcomes.<sup>10,21,23–27</sup> The exposure was a 10–percentage point increase in state APS score. This increase approximates the IQR among state scores, and can be interpreted as a shift from a less restrictive to a more restrictive state alcohol policy environment.

### Statistical Analysis

Descriptive characteristics were compared between low BAC and high BAC crash fatality victims using chi-square or Fisher's exact tests as appropriate. Generalized estimating equation logistic regression models were used to assess the relationship between a 10–percentage point increase in APS score and the odds a crash fatality was alcohol involved up to thresholds of 0.08% and 0.05%, and between 0.05% and 0.08%. Alternating logistic regression models were used to account for clustering of multiple deaths within a crash, and multiple crashes occurring within a state.<sup>28</sup> As FARS utilizes ten imputed data sets to account for missing BAC values, results were calculated for each of the ten imputation sets and then pooled to calculate the average coefficient estimate and the SE estimate, per recommended FARS methodology. A lagged analysis was used such that policies in any given year were related to crash fatality outcomes in the subsequent year. For example, APS scores from 2005 were related to crash fatality data from 2006. Analyses were also conducted without a lag, with similar results.

Analyses were adjusted for individual-level covariates, which included age, sex, race/ethnicity, and year, and state-level covariates. State-level covariates included proportion male, race/ethnicity proportions, proportion of population aged  $\geq 21$  years, level of urbanization, median household income, proportion of individuals with a college education, state policing rates, and the average number of vehicle miles traveled per person. State-level covariates were extracted from the U.S. Census Bureau's American Community Survey and Current Population Survey<sup>29</sup>, the Federal Highway Administration<sup>30</sup>, and the Bureau of Justice Statistics<sup>31</sup>. Yearly estimates of vehicle miles traveled were available from each state with the exceptions of 2012 and 2013, which were carried over from 2011. Prior to finalizing the adjusted model, collinearity was assessed between the APS scores and covariates, and all included covariates had a correlation coefficient with the APS less than the a priori threshold of 0.4.

A stratified analysis was performed on the basis of demographic and crash-related characteristics. All analyses were conducted from 2018 to 2019 using SAS, version 9.4. All *p*-values were two-sided and considered significant at  $p < 0.05$ . This study was deemed not human subjects research by the IRB at Boston University Medical Campus.

## RESULTS

From 2000 to 2015, there were 612,030 MVC fatalities in the U.S., of which 223,471 (37%) occurred in crashes involving one or more drivers with a positive BAC. Of these, 33,965 (15% of alcohol-involved crash fatalities, or 6% of all fatalities) were from a MVC involving

a BAC >0.00% but <0.08% (Table 1). During the study period, the proportions of alcohol-involved MVCs, including those below and above the BAC threshold of 0.08%, remained largely constant (Figure 1).

In comparison with fatalities from MVC crashes involving a BAC  $\geq$  0.08%, crash fatalities involving alcohol but at lower BAC levels were more likely to include non-drinking driver decedents (18.0% vs 13.2%) and involve multiple vehicles (44.2% vs 34.2%) (Table 1). In addition, compared with crash fatalities involving alcohol at  $\geq$  0.08%, decedents in crashes involving alcohol but at lower BACs were more likely to be female (26.0% vs 22.5%), and aged <21 years (19.6% vs 14.0%) and  $\geq$  55 years (18.5% vs 13.2%). Of the 6,648 youth who died in lower BAC crashes, 66.8% were not drinking drivers (data not shown in table). Lower BAC crash fatalities were also less likely to occur during a weekend or in the evening (i.e., from 6:00PM to 5:59AM).

When examining MVC fatalities by BAC level strata <0.08%, the number of fatalities generally increased with increasing BAC level (Figure 2). The proportion of victims who were those other than drinking drivers slightly decreased with increasing BAC level. The proportion of lower BAC crash fatalities were approximately split between those <0.05% and  $\geq$  0.05% (Figure 1).

In adjusted analyses, a 10–percentage point increase in the restrictiveness of the state policy environment was associated with reduced odds of alcohol involvement in crash fatalities at BACs >0.00% but <0.08% vs 0.00% (AOR=0.91, 95% CI=0.89, 0.93) (Table 2). This relationship was consistent in terms of direction, magnitude, and significance across most subgroups based on decedent and crash characteristics, with only a few exceptions (e.g., non-Hispanic black decedents). In a subgroup analysis restricted to decedents other than drinking drivers (i.e., non-drinking drivers, passengers, pedestrians, and cyclists), a 10–percentage point increase in the restrictiveness of the state policy environment was associated with reduced odds of alcohol involvement in crash fatalities at BACs >0.00% but <0.08% vs 0.00% (AOR=0.90, 95% CI=0.87, 0.93) (data not shown).

In additional analyses examining the odds of crash fatalities being alcohol involved below and above a BAC level of 0.05%, the results were consistent (Table 2). A 10–percentage point increase in APS score was associated with reduced odds of alcohol involvement in crash fatalities at BACs >0.00% but <0.05% vs 0.00% (AOR=0.90, 95% CI=0.88, 0.93), and BACs  $\geq$  0.05% but <0.08% vs <0.05% (AOR=0.93, 95% CI=0.89, 0.96). Findings were similar for most decedent- and crash-level characteristics.

## DISCUSSION

This is the first study of how alcohol-involved crashes below the current legal limit in the U.S. relate to aggregate state alcohol control policy environments. There were three major findings: (1) lower BAC crash fatalities accounted for a meaningful proportion of all alcohol-involved MVC fatalities; (2) in comparison with MVC crash fatalities involving BACs  $\geq$  0.08, lower BAC MVC decedents were more likely to be individuals other than a drinking driver, and were more likely to be youths; and (3) more restrictive state alcohol

policies were associated with a lesser likelihood of alcohol involvement <0.8%, <0.05%, and from 0.05% to <0.08%.

From 2000 to 2015, approximately 37% of all MVC fatalities involved some alcohol; approximately 15% of these crash fatalities involved BAC levels lower than the current legal limit of 0.08%. Because they involve alcohol below the legal limit, but often involve BACs associated with increased risk, lower BAC crash fatalities constitute an overlooked public health problem and an unaddressed source of MVC fatalities. Although it is understandable that research has focused on alcohol-related crashes occurring above the legal limit for driving, because the legal limit for impairment for driving is considerably higher than the level at which risks start to increase, many of these crash fatalities may also be due to alcohol.<sup>8</sup> Though beyond the scope of this study, future research on lower BAC crashes could focus on the role of other factors related to impaired driving such as cannabis use, mobile phone use, and distracted driving legislation.

Lower BAC fatalities were more likely to involve youth victims and those other than the drinking driver. Approximately 55% of lower BAC decedents were people other than the drinking driver; furthermore, among underage youth victims aged <21 years, two thirds of fatalities were not drinking drivers. The fact that these deaths take place on public roadways, and that the majority of harms accrue to those other than the drinking driver, warrants a strong public health response. This finding undermines the popular misconception that alcohol-involved crashes primarily affect drinking drivers. Viewed in this way, policies designed to restrict impaired driving can be viewed as increasing the freedom from the worry of injury or death among the majority of individuals sharing the roadway who are not drinking alcohol.

In addition, stronger policy environments are associated with reduced odds of alcohol involvement in crashes below the current legal limit of 0.08%. A 10% increase in the increase in the aggregate policy environment corresponded to a similar decrease in the odds of alcohol involvement in these crashes. This protective association was similar in magnitude to that which was observed in both adult and youth fatality victims involved in crashes with BACs  $\geq$  0.08%.<sup>9,10</sup> Protective associations were consistent throughout multiple strata of characteristics, including among decedents who were not the drinking driver. Therefore, strengthening current alcohol policies could reduce the likelihood of alcohol involvement in fatal crashes at all BAC levels.

Lastly, more restrictive policies were associated with reduced odds of alcohol involvement at BAC levels from 0.05% to 0.08%. In the context of future efforts to reduce the legal limit, it is informative to know that alcohol policies, from individual policy changes such as increasing alcohol taxes or strengthening interlock laws for driving under the influence offenders, to more comprehensive approaches that alter the greater alcohol policy environment such as changing to a 0.05% limit, may have protective effects for alcohol-involved crashes in that BAC range.<sup>13</sup> However, roughly two thirds of people in the developed world live in countries with a 0.05% BAC limit for driving<sup>32</sup> and countries that have reduced the legal BAC limit from 0.08% to 0.05% have seen reductions of 10%–15% in alcohol-related crash fatalities.<sup>7,33</sup> The National Academies of Sciences Engineering and



Medicine and the National Transportation Safety Board have both recommended reducing the legal BAC limit to 0.05%.<sup>16,34</sup> Utah has enacted this legislation, and other states (e.g., California) are considering similar legislation.<sup>18,35</sup>

## Limitations

This study had limitations. This was a repeated cross-sectional study and therefore causality cannot be inferred. Similarly, the analyses assessed the individual-level odds of alcohol involvement rather than state rates of MVC fatalities involving alcohol. Using logistic regression to calculate ORs of alcohol involvement depends on the ratios of fatalities involving and not involving alcohol at various thresholds. Therefore, it is possible that although an increase in APS score is associated with reduced likelihood of fatalities involving alcohol, the numbers of deaths may not actually be reduced. However, alcohol (even at low BAC levels) is an established risk factor for MVC crashes and fatalities, and the use of individual level odds allows for a within-state counterfactual scenario that can account for unmeasured state-level confounders, and makes it possible to account for individual-level covariates.<sup>9,10,21,23</sup> Future studies could validate this methodology as states change alcohol concentration driving limits. Because of the large sample size, finding significant associations is not surprising. Nonetheless, the fact that the findings for subgroup analyses were similar in direction and magnitude as for the overall results speak to the consistency and robustness of the findings, even among subgroups with considerably smaller sample sizes. The APS is an aggregate measure of policies, and effects of individual policies were not addressed in this study. The APS was developed with the Delphi approach, which relies on a priori expert opinion at a single point in time rather than mathematical prediction rules. APS scores do not account for local or federal policies that may affect alcohol consumption or driving practices. In addition, the causal attribution of alcohol to crashes is less for lower BAC versus higher BAC crashes.<sup>2</sup> Though great care was taken to adjust for multiple individual and state characteristics, there is nevertheless a possibility of residual confounding from factors such as distractions, fatigue, cell phone use, and other drug use. Finally, although FARS provides multiple data sets with imputed values for missing BAC levels, it is possible that state differences in BAC testing may have affected the results in unknown ways. However, using fatalities in which the BAC level was not imputed, similar proportions of crashes were alcohol involved.

## CONCLUSIONS

Lower BAC-related MVC fatalities have been overlooked as a public health issue. More restrictive alcohol policy environments are associated with reduced odds of fatal crashes involving alcohol at levels below the current legal limit, with comparable protective associations as for fatal crashes above the legal limit. This study suggests that strengthening alcohol policies could reduce alcohol-involved crash fatalities at all BAC levels.

## ACKNOWLEDGMENTS

This study was supported by a grant from the Peter F. McManus Charitable Trust and awards R01AA026268, R01AA023376, and R01AA018377 from the National Institute on Alcohol Abuse and Alcoholism. The content is solely the responsibility of the authors and does not necessarily represent the official views of the National Institute on Alcohol Abuse and Alcoholism, the NIH, or the Peter F. McManus Charitable Trust. The authors would like to

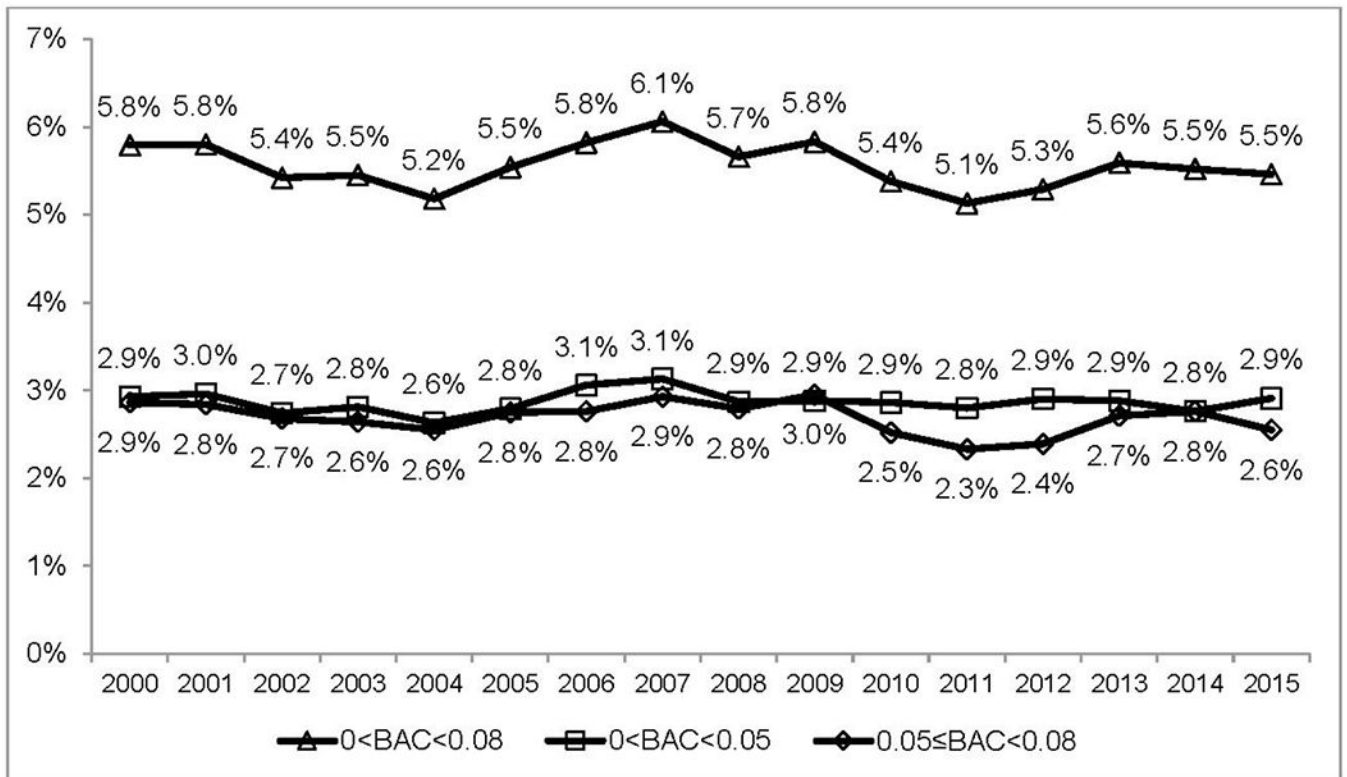
thank Tonja Lindsey of the National Highway Transportation Safety Administration for technical assistance with imputed data sets.

## REFERENCES

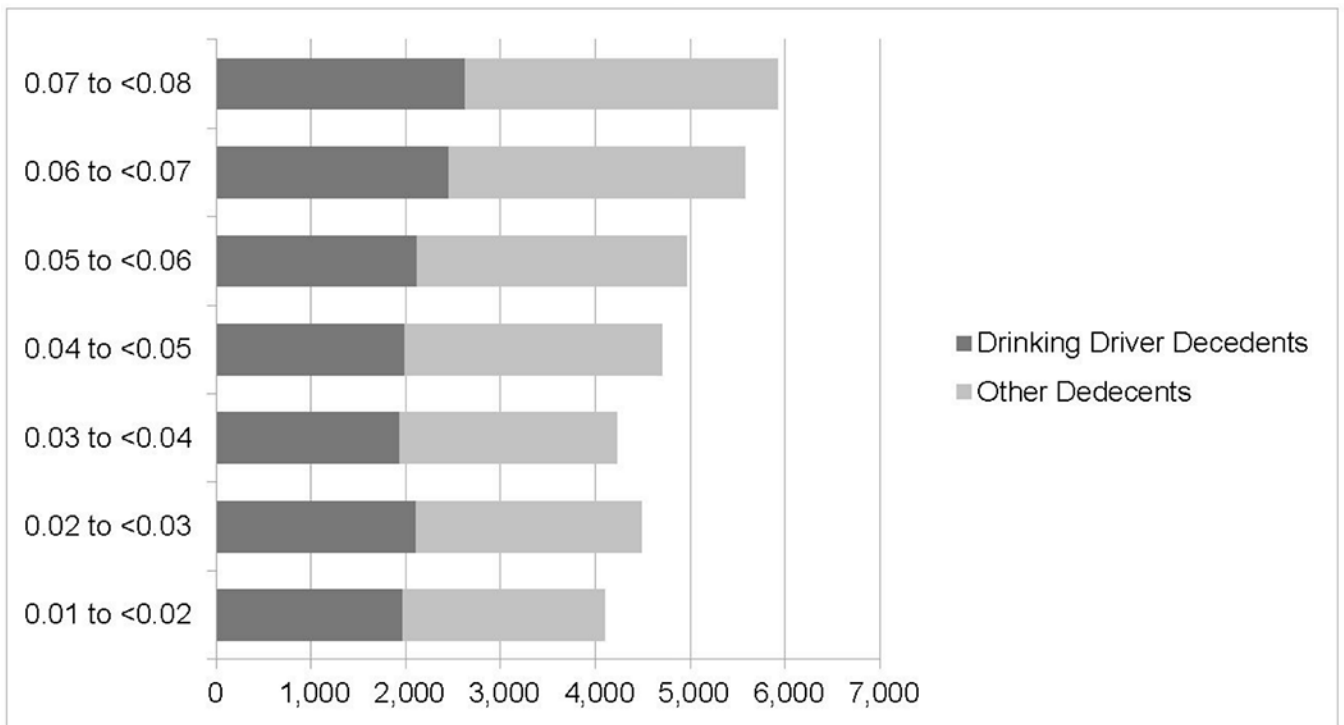
1. National Highway Traffic Safety Administration. 2017 Traffic Safety Facts: Alcohol-Impaired Driving. <https://crashstats.nhtsa.dot.gov/Api/Public/ViewPublication/812630> Published 2018 Accessed January 31, 2019.
2. Zador PL, Krawchuk SA, Voas RB. Alcohol-related relative risk of driver fatalities and driver involvement in fatal crashes in relation to driver age and gender: an update using 1996 data. *J Stud Alcohol*. 2000;61(3):387–395. 10.15288/jsa.2000.61.387. [PubMed: 10807209]
3. Zador PL. Alcohol-related relative risk of fatal driver injuries in relation to driver age and sex. *J Stud Alcohol*. 1991;52(4):302–310. 10.15288/jsa.1991.52.302. [PubMed: 1875701]
4. Borkenstein RF, Crowther R, Shumate R. The role of the drinking driver in traffic accidents (The Grand Rapids Study). *Blutalkohol*. 1974; 11 (suppl): 1–131.
5. Blomberg RD, Peck RC, Moskowitz H, Burns M, Fiorentino D. Crash risk of alcohol involved driving: a case-control study. Stanford, CT: Dunlap & Associates, Inc.;2005.
6. Voas RB, Torres P, Romano E, Lacey JH. Alcohol-related risk of driver fatalities: an update using 2007 data. *J Stud Alcohol Drugs*. 2012;73(3):341–350. 10.15288/jsad.2012.73.341. [PubMed: 22456239]
7. Fell JC, Voas RB. The effectiveness of a 0.05 blood alcohol concentration (BAC) limit for driving in the United States. *Addiction*. 2014;109(6):869–874. 10.1111/add.12365. [PubMed: 24898061]
8. Van Dyke NA, Fillmore MT. Laboratory analysis of risky driving at 0.05% and 0.08% blood alcohol concentration. *Drug Alcohol Depend*. 2017;175:127–132. 10.1016/j.drugalcdep.2017.02.005. [PubMed: 28412303]
9. Naimi TS, Xuan Z, Sarda V, et al. Association of state alcohol policies with alcohol-related motor vehicle crash fatalities among US adults. *JAMA Intern Med*. 2018; 178(7):894–901. 10.1001/jamainternmed.2018.1406. [PubMed: 29813162]
10. Hadland SE, Xuan Z, Sarda V, et al. Alcohol policies and alcohol-related motor vehicle crash fatalities among young people in the U.S. *Pediatrics*. 2017;139(3):e20163037 10.1542/peds.2016-3037. [PubMed: 28193794]
11. Romano E, Torres-Saavedra P, Voas RB, Lacey JH. Drugs and alcohol: their relative crash risk. *J Stud Alcohol Drugs*. 2014;75(1):56–64. 10.15288/jsad.2014.75.56. [PubMed: 24411797]
12. Romano E, Pollini RA. Patterns of drug use in fatal crashes. *Addiction*. 2013;108(8): 1428–1438. 10.1111/add.12180. [PubMed: 23600629]
13. Fell JC, Scherer M. Estimation of the potential effectiveness of lowering the blood alcohol concentration (BAC) limit for driving from 0.08 to 0.05 grams per deciliter in the United States. *Alcohol Clin Exp Res*. 2017;41(12):2128–2139. 10.1111/acer.13501. [PubMed: 29064571]
14. Molnar LJ, Eby DW, Kostyniuk LP, St. Louis RM, Zanier N. Stakeholder perceptions of lowering the blood alcohol concentration standard in the United States. *Ann Epidemiol*. 2017;27(12):757–762. 10.1016/j.annepidem.2017.09.004. [PubMed: 28988623]
15. Eby DW, Molnar LJ, Kostyniuk LP, et al. Perceptions of alcohol-impaired driving and the blood alcohol concentration standard in the United States. *J Safety Res*. 2017;63:73–81. 10.1016/j.jsr.2017.08.013. [PubMed: 29203026]
16. National Transportation Safety Research Board. Reaching zero: actions to eliminate alcohol-impaired driving. Washington, DC; 2013.
17. National Academies of Sciences Engineering and Medicine. Getting to zero alcohol-impaired driving fatalities: A comprehensive approach to a persistent problem. Washington, DC: National Academies Press; 2018 10.17226/24951.
18. Utah State Legislature. H.B. 155 driving under the influence and public safety revisions. <http://le.utah.gov/~2017/bills/static/HB0155.html> Published 2017 Accessed March 30, 2017.
19. National Traffic Highway Safety Administration. Fatality Analysis Reporting System (FARS) Encyclopedia, [www-fars.nhtsa.dot.gov/QueryTool/QuerySection/SelectYear.aspx](http://www-fars.nhtsa.dot.gov/QueryTool/QuerySection/SelectYear.aspx) Published 2015 Accessed December 15, 2015.



20. Subramanian R. Transitioning to multiple imputation-A new method to estimate missing blood alcohol concentration (BAC) values in FARS. Washington, DC: National Center for Statistics and Analysis; 2002.
21. Naimi TS, Blanchette J, Nelson TF, et al. A new scale of the U.S. alcohol policy environment and its relationship to binge drinking. *Am J Prev Med.* 2014;46(1): 10–16. 10.1016/j.amepre.2013.07.015. [PubMed: 24355666]
22. Nelson TF, Xuan Z, Babor T, et al. Efficacy and strength of evidence of U.S. alcohol control policies. *Am J Prev Med.* 2013;45(1): 19–28. 10.1016/j.amepre.2013.03.008. [PubMed: 23790985]
23. Naimi TS, Xuan Z, Coleman SM, et al. Alcohol policies and alcohol-involved homicide victimization in the United States. *J Stud Alcohol Drugs.* 2017;78(5):781–788. 10.15288/jsad.2017.78.781. [PubMed: 28930066]
24. Naimi TS, Xuan Z, Cooper SE, et al. Alcohol involvement in homicide victimization in the United States. *Alcohol Clin Exp Res.* 2016;40(12):2614–2621. 10.1111/acer.13230. [PubMed: 27676334]
25. Nelson TF, Xuan Z, Blanchette JG, Heeren TC, Naimi TS. Patterns of change in implementation of state alcohol control policies in the United States, 1999–2011. *Addiction.* 2015; 110(1):59–68. 10.1111/add.12706. [PubMed: 25138287]
26. Hadland SE, Xuan Z, Blanchette JG, Heeren TC, Swahn MH, Naimi TS. Alcohol policies and alcoholic cirrhosis mortality in the United States. *Prev Chronic Dis.* 2015;12:E177 10.5888/pcd12.150200. [PubMed: 26469950]
27. Lira MC, Xuan Z, Coleman SM, Swahn MH, Heeren TC, Naimi TS. Alcohol policies and alcohol involvement in intimate partner homicide in the U.S. *Am J Prev Med.* 2019;57(2): 172–179. 10.1016/j.amepre.2019.02.027. [PubMed: 31239088]
28. Carey V, Zeger SL, Diggle P. Modelling multivariate binary data with alternating logistic regressions. *Biometrika.* 1993;80(3):517–526. 10.1093/biomet/80.3.517.
29. U.S. Census Bureau. Current Population Survey, [www.census.gov/programs-surveys/cps.html](http://www.census.gov/programs-surveys/cps.html) Published 2012 Accessed February 10, 2015.
30. Federal Highway Administration. Quick Find: Vehicle Miles of Travel. [www.fhwa.dot.gov/policyinformation/quickfinddata/qftravel.cfm](http://www.fhwa.dot.gov/policyinformation/quickfinddata/qftravel.cfm) Published 2017 Accessed October 10, 2017.
31. Bureau of Justice Statistics. Law Enforcement Management And Administrative Statistics (LEMAS). [www.bjs.gov/index.cfm?ty=dcdetail&iid=248](http://www.bjs.gov/index.cfm?ty=dcdetail&iid=248) Published 2008 Accessed January 1, 2017.
32. WHO. Legal BAC limits data by country. <http://apps.who.int/gho/data/node.main.A1147?lang=en> Published 2014 Accessed December 21, 2016.
33. Byrne PA, Ma T, Mann RE, Elzohairy Y. Evaluation of the general deterrence capacity of recently implemented (2009–2010) low and zero BAC requirements for drivers in Ontario. *Accid Anal Prev.* 2016;88:56–67. 10.1016/j.aap.2015.12.002. [PubMed: 26720925]
34. National Academies of Sciences, Engineering and Medicine. Getting to Zero Alcohol-impaired Driving Fatalities: All States Should Lower the Blood Alcohol Concentration Limit to .05%. [www.nap.edu/resource/24951/110618\\_BAC.pdf](http://www.nap.edu/resource/24951/110618_BAC.pdf) Published 2018 Accessed March 1, 2019.
35. Sacramento C. Lawmakers Aim To Lower Legal Blood Alcohol Limit In California To .05% CBS 13 Sacramento, <https://sacramento.cbslocal.com/2019/02/26/lower-california-blood-alcohol-limit/> Published 2 26, 2019 Accessed March 1, 2019.



**Figure 1.**  
Proportion of motor vehicle crash fatalities involving alcohol below the legal BAC limit of 0.08% and stratified by 0.05% by year, U.S., Fatality Analysis Reporting System, 2000–2015.  
BAC, blood alcohol content.



**Figure 2.** Fatalities from motor vehicle crashes involving a BAC level below 0.08%, by drinking driver status and BAC level, U.S., Fatality Analysis Reporting System, 2000–2015. BAC, blood alcohol content.

**Table 1.**Characteristics of MVC Decedents by Crash-level BAC<sup>a</sup>

Characteristic	0<BAC<0.08 % (n=33,965)	BAC 0.08 % (n=189,506)	p-value phi coefficient ( 0.08 vs >0 to <0.08)
Drinking driver status			
Drinking drivers	45.2 (15,357)	58.8 (111,438)	<b>&lt;0.0001</b>
Non-drinking drivers	18.0 (6,097)	13.2 (25,031)	0.1021
Passengers	26.3 (8,937)	21.4 (40,488)	
Others <sup>b</sup>	10.5 (3,574)	6.6 (12,549)	
Sex			
Male	74.0 (25,123)	77.5 (146,931)	<b>&lt;0.0001</b>
Female	26.0 (8,834)	22.5 (42,534)	-0.0304
Age, years			
<21	19.6 (6,648)	14.0 (26,451)	<b>&lt;0.0001</b>
21–34	32.7 (11,099)	38.8 (73,504)	0.0863
35–54	29.2 (9,933)	34.0 (64,471)	
55	18.5 (6,285)	13.2 (25,080)	
Race/ethnicity			
Non-Hispanic white	57.4 (19,489)	56.3 (106,668)	<b>&lt;0.0001</b>
Non-Hispanic black	12.8 (4,345)	11.3 (21,336)	0.0247
Hispanic	12.1 (4,110)	13.7 (25,948)	
Other	17.7 (6,021)	18.8 (35,554)	
Weekend			
No	48.1 (16,353)	43.2 (81,863)	<b>&lt;0.0001</b>
Yes	51.9 (17,609)	56.8 (107,606)	0.0358
Time of day			
6:00AM to 5:59PM	35.9 (12,076)	22.3 (41,639)	<b>&lt;0.0001</b>
6:00PM to 5:59AM	64.1 (21,532)	77.7 (145,216)	0.1143
Vehicles			
Single vehicle crash	55.8 (18,944)	65.8 (124,649)	<b>&lt;0.0001</b>
Multiple vehicle crash	44.2 (15,021)	34.2 (64,857)	-0.0749

Note: Boldface indicates statistical significance ( $p < 0.05$ ).

<sup>a</sup>BAC divided into 2 categories, (1) BAC >0.00 but <0.08 and (2) 0.08, based on the highest BAC of any driver in a single crash.

<sup>b</sup>Includes cyclists and pedestrians.

MVC, motor vehicle crash; BAC, blood alcohol content.

**Table 2.**Relationships Between a 10% Increase in APS and Likelihood of MVC Death<sup>b</sup> by BAC Level<sup>c</sup>

BAC subcategory	>0 to <0.08 vs 0 AOR (95% CI)	>0 to <0.05 vs 0 AOR (95% CI)	0.05 to <0.08 vs <0.05 AOR (95% CI)
Overall	<b>0.91 (0.89, 0.93)</b>	<b>0.90 (0.88, 0.93)</b>	<b>0.93 (0.89, 0.96)</b>
Drinking driver status			
Drinking driver	N/A	N/A	N/A
Non-drinking driver	<b>0.90 (0.86, 0.95)</b>	<b>0.91 (0.86, 0.96)</b>	<b>0.90 (0.82, 0.99)</b>
Passengers	<b>0.90 (0.86, 0.94)</b>	<b>0.89 (0.83, 0.94)</b>	<b>0.93 (0.87, 0.98)</b>
Others	<b>0.87 (0.81, 0.93)</b>	<b>0.88 (0.80, 0.97)</b>	<b>0.86 (0.77, 0.96)</b>
Sex			
Male	<b>0.91 (0.89, 0.94)</b>	<b>0.89 (0.86, 0.92)</b>	<b>0.94 (0.90, 0.98)</b>
Female	<b>0.91 (0.87, 0.94)</b>	<b>0.93 (0.88, 0.98)</b>	<b>0.89 (0.84, 0.94)</b>
Age, years			
<21	<b>0.92 (0.87, 0.96)</b>	<b>0.89 (0.84, 0.95)</b>	0.95 (0.88, 1.02)
21–34	<b>0.92 (0.89, 0.96)</b>	<b>0.92 (0.87, 0.96)</b>	<b>0.93 (0.88, 0.98)</b>
35–54	<b>0.92 (0.88, 0.96)</b>	<b>0.90 (0.86, 0.95)</b>	0.94 (0.89, 1.00)
55	<b>0.86 (0.82, 0.91)</b>	<b>0.88 (0.83, 0.94)</b>	<b>0.85 (0.79, 0.92)</b>
Race/ethnicity			
Non-Hispanic white	<b>0.93 (0.90, 0.95)</b>	<b>0.92 (0.89, 0.95)</b>	<b>0.94 (0.90, 0.98)</b>
Non-Hispanic black	0.98 (0.91, 1.06)	0.95 (0.86, 1.05)	1.02 (0.91, 1.14)
Hispanic	<b>0.86 (0.79, 0.93)</b>	<b>0.84 (0.75, 0.95)</b>	<b>0.89 (0.81, 0.99)</b>
Other	<b>0.83 (0.78, 0.89)</b>	<b>0.83 (0.76, 0.90)</b>	<b>0.84 (0.77, 0.92)</b>
Weekend			
Yes	<b>0.92 (0.89, 0.96)</b>	<b>0.92 (0.88, 0.96)</b>	<b>0.93 (0.89, 0.98)</b>
No	<b>0.90 (0.87, 0.93)</b>	<b>0.89 (0.86, 0.93)</b>	<b>0.92 (0.87, 0.97)</b>
Time of day			
6:00AM to 5:59PM	<b>0.91 (0.88, 0.94)</b>	<b>0.91 (0.87, 0.95)</b>	<b>0.92 (0.86, 0.98)</b>
6:00PM to 5:59AM	<b>0.92 (0.89, 0.95)</b>	<b>0.91 (0.87, 0.94)</b>	<b>0.94 (0.90, 0.98)</b>
Vehicles			
Single vehicle crash	<b>0.92 (0.89, 0.95)</b>	<b>0.91 (0.87, 0.94)</b>	<b>0.94 (0.90, 0.97)</b>
–Multiple vehicle crash	<b>0.90 (0.87, 0.94)</b>	<b>0.90 (0.86, 0.94)</b>	<b>0.91 (0.86, 0.97)</b>

Note: Boldface indicates statistical significance ( $p < 0.05$ ).

<sup>a</sup> All models adjusted for age, gender, race/ethnicity, year (as a categorical variable), and state-level covariates (proportion  $\geq 21$  years, proportion male, race/ethnicity proportions, college education, median household income, level of urbanization, policing rates, and vehicle miles traveled).

<sup>b</sup> Alcohol-related MVCs were defined as those in which the BAC of at least one driver involved was either  $>0.00\%$  and  $<0.08\%$ ,  $>0.00\%$  and  $<0.05\%$ ,  $0.05\%$  and  $<0.08\%$ .

<sup>c</sup> A 1-year lag was introduced between APS score and MVC fatalities (e.g., states' mortality rates from 2013 were associated with APS scores from 2012)

APS, Alcohol Policy Scale; MVC, motor vehicle crash; BAC, blood alcohol content.