

RESEARCH

Open Access



miR-615-3p promotes the epithelial-mesenchymal transition and metastasis of breast cancer by targeting PICK1/TGFBRI axis

Bo Lei^{1†}, Dandan Wang^{2†}, Ming Zhang^{1†}, Yuwei Deng³, Huijie Jiang^{2*} and Yiwen Li^{3*}

Abstract

Background: Increasing evidence indicates that epithelial-mesenchymal transition (EMT) can be regulated by microRNAs (miRNAs). miR-615-3p was shown to be involved in tumor development. However, the role of miR-615-3p in the metastasis of breast cancer remains largely unknown.

Methods: The expression of miR-615-3p in breast cancer cells and tissues was assessed by qRT-PCR and situ hybridization assays. Effects of miR-615-3p on tumor metastasis were evaluated with experiments in vitro and mouse model. EMT markers were detected by western blot and immunofluorescence assays. Molecular mechanism of miR-615-3p in the regulation of breast cancer cell metastasis was analyzed by Western Blot, Co-immunoprecipitation, and Luciferase assay.

Results: In the present study, we found that miR-615-3p was significantly elevated in breast cancer cells and tissues, especially in those with metastasis. In breast cancer cell lines, stable overexpression of miR-615-3p was sufficient to promote cell motility in vitro, and pulmonary metastasis in vivo, accompanied by the reduced expression of epithelial markers and the increased levels of mesenchymal markers. Further studies revealed that the reintroduction of miR-615-3p increased the downstream signaling of TGF- β , the type I receptor (TGFBRI) by targeting the 3'-untranslated regions (3'-UTR) of PICK1. PICK1 inhibits the binding of DICER1 to Smad2/3 and the processing of pre-miR-615-3p to mature miR-615-3p in breast cancer cells, thus exerting a negative feedback loop.

Conclusions: Our data highlight an important role of miR-615-3p in the molecular etiology of breast cancer, and implicate the potential application of miR-615-3p in cancer therapy.

Keywords: miR-615-3p, EMT, TGF- β , PICK1, Breast cancer

Background

Breast cancer is the most commonly diagnosed cancer, it accounts for 11.6% of the total cases and 6.6% of all

cancer death in the world [1]. Although surgical removal of the tumor is still the primary treatment of choice, apart from radiotherapy or surgery, chemotherapy remains the most effective way for preventing cancer cell growth and metastasis thereby enhancing the survival of cancer patients [2]. Some evidence showed that natural products may play a potential and promising role in the development of novel chemotherapeutics for the treatment of cancers [3]. The transforming growth factor- β

* Correspondence: zlylyw@126.com; jianghuijie@hrbmu.edu.cn

[†]Bo Lei, Dandan Wang and Ming Zhang contributed equally to this work.

²Department of Radiology, The Second Affiliated Hospital of Harbin Medical University, 246 Xuefu Road, Harbin 150086, China

³Department of Oncology, The Second Affiliated Hospital of Harbin Medical University, 246 Xuefu Road, Harbin 150086, China

Full list of author information is available at the end of the article



© The Author(s). 2020 **Open Access** This article is licensed under a Creative Commons Attribution 4.0 International License, which permits use, sharing, adaptation, distribution and reproduction in any medium or format, as long as you give appropriate credit to the original author(s) and the source, provide a link to the Creative Commons licence, and indicate if changes were made. The images or other third party material in this article are included in the article's Creative Commons licence, unless indicated otherwise in a credit line to the material. If material is not included in the article's Creative Commons licence and your intended use is not permitted by statutory regulation or exceeds the permitted use, you will need to obtain permission directly from the copyright holder. To view a copy of this licence, visit <http://creativecommons.org/licenses/by/4.0/>. The Creative Commons Public Domain Dedication waiver (<http://creativecommons.org/publicdomain/zero/1.0/>) applies to the data made available in this article, unless otherwise stated in a credit line to the data.

(TGF- β) family of cytokines regulates many processes such as immune suppression, angiogenesis, wound healing, and epithelial-mesenchymal transition (EMT) [4]. Upon binding TGF- β , the type I receptor (TGFBR1) binds TGFBR2, which results in the activation of the transcription factors SMAD2 and SMAD3 [5]. In the early stage of tumorigenesis, the proliferation of epithelial cells retains sophisticated sensitivity to TGF- β , wherein TGF- β elicits a tumor-suppressive response [6]. However, transformed cells become refractory to TGF- β mediated growth inhibition and acquire a phenotype wherein the intracellular signaling circuitry is altered, leading to tumorigenic and metastatic effects in response to TGF- β [7]. Ligand-dependent activation of TGF- β receptors and regulation of their subsequent kinase activity is a complex process that can involve several posttranslational modifications of the receptors [8]. With so much complexity in the pathway, we set out to find potential new regulators of TGF- β receptor activity.

Invasion and metastasis, two of the most important hallmarks of malignant tumors, are the foremost fatal factors for breast cancer [9]. Identification of invasive and/or metastatic factors and an understanding of the underlying molecular mechanisms may provide novel targets for cancer therapy. Increasing evidence indicates that epithelial-mesenchymal transition (EMT) is a key event in tumor invasion and metastasis [10]. During EMT, a morphological change from epithelial-like to mesenchymal-like appearance is accompanied by loss of cell-cell adhesion and activation of mesenchymal markers, such as N-cadherin, fibronectin and vimentin, as well as increased motility of tumor cells, which consequently facilitates tumor metastasis [11]. Previous mechanistic investigations had demonstrated many regulators that could enhance the EMT state such as c-Fos overexpression [12].

Deregulation of miRNA has been observed in various diseases, including cancer [13]. For instance, previous research has demonstrated that anti-miR-203 suppresses ER-positive breast cancer growth and stemness by targeting SOCS3 [14]. Furthermore, more and more reports have indicated that a few miRNAs suppress (for example, the miR-200 family) or promote (for example, miR-24) EMT and tumor metastasis to date. Although some miRNAs (for example, miR-214) have been identified to regulate EMT in breast cancer, the role of miRNAs in the EMT of breast cancer deserved further investigation [15–17].

Protein interacting with C kinase 1 (PICK1) is a domain-containing protein that inhibits actin-related protein 2/3 (Arp2/3)-dependent actin polymerization, and participates in the regulation of the trafficking of several cell-surface receptors [18]. It was reported that PICK1 negatively or positively regulated the neoplastic

infiltration of astrocytic or breast tumors [19, 20]. Especially, it was also suggested that PICK1 may participate in breast cancer development by targeting TGF- β type I receptor (T β RI) for degradation. Moreover, a negative correlation between PICK1 expression and T β RI or p-Smad2 levels is observed in human breast tumors [21]. However, very little was known about the relationship between miRNA and PICK1.

It was reported that miR-615-3p may function as a potential tumor suppressor through diverse mechanisms [22, 23]. However, the role of miR-615-3p in the metastasis of breast cancer remains largely unknown. In the present study, we showed that miR-615-3p displayed a more pronounced increase in breast cancer tissues and cells. The knockdown of miR-615-3p expression significantly repressed the in vitro migration and invasion, and in vivo pulmonary metastasis of breast cancer cells. Subsequent mechanism studies revealed that miR-615-3p promoted EMT program by directly targeting PICK1, and consequently increased the accumulation of Vimentin and decrease of E-cadherin, which promoted EMT. These findings provided novel mechanistic insights into the role of miR-615-3p in EMT and metastasis.

Materials and methods

Cell culture

The human breast cancer cell lines MCF-7, BT-549, T47D, MDA-MB-468, MDA-MB-231, and HEK293T were purchased from American type culture collection (ATCC, USA). Cell lines were authenticated on the basis of viability, recovery, growth, and morphology. The expression status of ER was further confirmed by western blotting before they were used in the experiments. All cells were cultured in Dulbecco's modified Eagle's media medium containing 10% fetal bovine serum (Hyclone) at 37 °C with 5% CO₂ in cell culture incubators.

Plasmids

Cultured cells were transfected with miRCURY LNA Inhibitor Control (Negative control A catalog#199004–00, 5 nmol, EXIQON), miRCURY LNA Inhibitor (hsa-miR-615-3p catalog#411356–00, Batch#224134, 5 nmol, EXIQON), mirVana microRNA mimic negative control #1 (catalog#4464058, Lot#ASO0VDIQ, 5 nmol, Ambion), mirVana microRNA mimic hsa-miR-615 (catalog#4464066, 5 nmol, Ambion). Using Ambion by Life Technologies Silencer siRNA Labeling Kit-Cy3 (cat # AM1632) according to manufacturer's instructions. Expression plasmids of miR-615-3p were created by PCR amplification using human genomic DNA as a template. The primers are as follows: miR-615-3p, forward 5' CCC AAG CTT GGG CAT AAT TGG ATC ATA GGA AC 3' and reverse 5' CCG GAA TTC CGG GTG AAT AGC TTG CAG CGT TC 3'. The reactions were

incubated in tubes with 30 cycles of 98 °C for 10 s and 64 °C for 30 s. The PCR product (518 bp) was digested with *HindIII* and *EcoRI*, followed by insertion into a *HindIII*- and *EcoRI*-open pcDNA 3.1(+) vector (Invitrogen) and confirmed by DNA sequencing.

Luciferase assay

The region of the wild-type *PICK1* mRNA 3'UTR with a putative miR-615-3p binding site or mutant *PICK1* mRNA 3'UTR were cloned into pMIR-REPORT Luciferase vector (cat # AM5795, Applied Biosystems) using *Spe I* and *Hind III* sites. The sequences of the putative binding site and the regions targeted by mutagenesis and cloned into the reporter gene. All plasmids were verified by sequencing. These constructs were transfected into indicated cells using Lipofectamine LTX with Plus Reagent (cat #18324-012, Life Technologies). Cells were plated at a density of 3600/cm² (1×10^4) per well, into a 96-well plate and attached overnight. They were co-transfected with 100 ng of wild-type or mutant reporter vector, 10 ng of internal control pRL-TK-Renilla-luciferase plasmid (cat# E2241, Promega) and negative control #1 or mirvana microRNA miR-615-3p mimic, both from Life Technologies final concentration, 80 nM. Twenty-four hours post-transfection, luciferase activities were measured using the Dual-Glo Luciferase Assay System (cat # E2920, Promega) according to the manufacturer's instructions. Firefly luciferase values were normalized by dividing by the *Renilla* luciferase values.

Quantitative real-time PCR (qRT-PCR)

Total RNA was isolated with Trizol reagent (Invitrogen, USA), according to the manufacturer's instructions. Total RNA from each sample was reverse transcribed with oligo (dT)₂₀ using SuperScript III Reverse Transcriptase (Invitrogen, USA) followed by real-time PCR. Real-time PCR was performed with SYBR Green PCR Master Mix reagents using an ABI Prism 7700 Sequence Detection System (Applied Biosystems, USA). Data were analyzed according to the comparative Ct method. U6 was used as an internal reference for miRNAs and β -actin as used as an internal reference for mRNAs. The primers are as follows: miR-615-3p, forward: 5'-ACA CTC CAG CTG GGT CCG AGC CTG GGT CTC-3', reverse: 5'-TGG TGT CGT GGA GTC G-3'; *PICK1* mRNA, forward 5'-TAC TAA CAG CGA GCT TCC GC-3' and reverse 5'-GGT TCC GAG AGT TGG AGT GG-3'; β -actin mRNA, forward 5'-AGA GAT GGC CAC GGC TGC TT-3' and reverse 5'-ATT TGC GGT GGA CGA TGG AG-3'; U6, forward 5'-CTC GCT TCG GCA GCA CA-3' and reverse 5'-AAC GCT TCA CGA ATT TGC GT-3'.

Co-immunoprecipitation, western blot assay, and antibodies

Co-immunoprecipitation assays were carried out by using the Pierce Co-Immunoprecipitation Kit (#26149, Thermo Fisher, USA) according to the manufacturer's protocol. Western blotting was performed according to the previously described procedures [24]. The cells were lysed in lysis buffer. Protein was separated by SDS-PAGE (10% gels) and transferred onto a 0.22 μ m polyvinylidene fluoride (PVDF) membrane. The proteins were probed with specific antibodies overnight. After incubation, the blots were incubated with corresponding anti-rabbit IgG H&L (HRP) or anti-mouse IgG H&L (HRP) for 1 h at room temperature. The proteins were detected using ECL western blot detection system. Anti-*PICK1*(#ab3420,rabbit) antibody, anti-E-cadherin(#ab15148, rabbit) antibody and anti-vimentin (#ab16700, rabbit) antibody were obtained from Abcam. Anti-smad2(#5339 rabbit) antibody, anti-p-smad2(#3108 rabbit ser465/467) antibody, anti-p-smad3(#9520 rabbit ser423/425) antibody, anti-smad3(#9523 rabbit) antibody, and anti-Dicer (#5362 rabbit) antibody were purchased from Cell Signaling Technologies (CST). Anti-TGF β RI (#sc-101,574, mouse) antibody and anti-TGF β RII (#sc-17,791, mouse) antibody were obtained from Santa Cruz Biotechnology. Anti- β -actin (#WL01372, mouse) was obtained from Wanleibio (China).

Human tissue analysis

Breast tumor and adjacent noncancerous tissues were obtained from the Affiliated Hospital of Harbin Medical University, with the informed consent of patients and with approval for experiments from the Affiliated Hospital of University.

Animal experiments

Indicated cells (2×10^6) that stably expressed miR-615-3p or control plasmids were injected into the tail vein of 6-week-old female nude mice. All mice were sacrificed 8 weeks after the injection. All the experimental procedures involving animals were conducted in accordance with Institutional Animal Care guidelines and approved ethically by the Administration Committee of Experimental Animals.

Cell migration and in vitro invasion

The migration and in vitro invasion were performed in 24-well cell culture inserts (Corning Life Sciences). The inserts for invasion assays were coated with 30 μ L of Matrigel matrix at 37 °C for 1 h. Cells (1×10^5 cells per Transwell) were added into the upper chamber and allowed 24 h for cell migration. For in vitro invasion, 2×10^5 cells were added into each upper chamber and allowed 24 h for invasion. After the period of migration

or invasion, cells on the undersurface of the upper units were stained and counted under a phase-contrast microscope.

Immunofluorescence staining

Cells were cultured on coverslips overnight and fixed with 4% paraformaldehyde, followed by the treatment of 1% Triton X-100 (Thermo Fisher, MA) for permeabilization. To visualize the E-cadherin and vimentin, we incubated the coverslips with the respective antibodies for 1 h and then rhodamine-conjugated secondary antibody for another hour. The fluorescence staining was observed with the aid of a fluorescence microscope (Axiovert 200 M; Carl Zeiss, USA). 4',6-diamidino-2-phenylindole (DAPI) was included during staining to visualize nuclei of cells.

Statistical analysis

Data were presented as the means \pm S.E.M. from three or more independent experiments unless indicated otherwise. Statistical analysis was performed using two-tailed t-tests. $P < 0.05$ was considered a significant difference. (* $P < 0.05$; ** $P < 0.01$; *** $P < 0.001$).

Results

The miR-615-3p level is upregulated in breast cancer tissues and breast cancer cell lines, and positively correlated with the metastatic ability of breast cancer cells

To investigate the role of miR-615-3p in breast cancer pathogenesis, we determined the expression of miR-615-3p in breast cancer tissues and adjacent normal tissues by using qRT-PCR. We observed that miR-615-3p expression was significantly increased in breast cancer tissues compared with adjacent normal breast tissues (Fig. 1a). In situ hybridization assays indicated that miR-615-3p was highly expressed in tumor tissues, whereas little signal was observed in the normal breast tissues (Fig. 1b). We further determined the correlation between the miR-615-3p level and the metastatic status of patients with breast cancer. We found that the expression of miR-615-3p was positively associated with lymph node metastasis (Fig. 1c), and tumors expressed increasing levels of miR-615-3p with the progression of the clinical stage (Fig. 1d) in breast cancer patients. We also used qRT-PCR to measure the expression levels of miR-615-3p in breast cancer cell lines. BT-549, MDA-MB-468, MCF-7, MDA-MB-231 and a non-malignant breast epithelial cell MCF-10A were used. Compared to low metastatic MCF-7 cells, the expression of miR-615-3p was obviously increased in highly metastatic cells, while the expression of miR-615-3p was significantly decreased in non-malignant breast epithelial cell MCF-10A (Fig. 1e). These results suggest that the miR-615-3p level is

upregulated in breast cancer tissues and breast cancer cell lines and that it is positively correlated with the metastatic ability of breast cancer cells.

miR-615-3p promotes breast cancer metastasis

To evaluate the effect of miR-615-3p on MCF-7 cells, which have low endogenous miR-615-3p expression, we ectopically expressed miR-615-3p in MCF-7 cells. Ectopic miR-615-3p did not promote MCF-7 cell growth (data not shown). However, the Transwell migration assay and Matrigel invasion assay showed that ectopic expression of miR-615-3p increased migration and invasion of MCF-7 cells significantly (Fig. 2a). To investigate whether silencing of miR-615-3p expression in metastatic cells impedes their ability to metastasize, we knocked down endogenous miR-615-3p levels in MDA-MB-231 cells. MDA-MB-231 cells were infected with lentiviral vectors to establish two stable lines that either expressed antisense RNA against miR-615-3p (Anti-miR-615-3p) or contained a control vector (Anti-NC). Transwell migration assay and Matrigel invasion assay showed that knockdown of miR-615-3p decreased migration and invasion of MDA-MB-231 cells significantly (Fig. 2b). The transfection efficiency of MCF-7(miR-615-3p overexpression) and MDA-MB-231(anti-miR-615-3p) was shown in Fig. 2f.

To investigate whether miR-615-3p promotes metastasis in vivo, we performed intravenous injection through the tail vein with the same cells. In the group injected with MCF-7-miR-615-3p cells, all 10 mice developed lung metastasis, with a large number of metastatic nodules covering the entire lung. In contrast, only 1 out of 10 mice injected with MCF-7-NC cells developed lung metastasis, with a small number of metastatic nodules (Fig. 2c). Therefore, miR-615-3p expression promoted the colonization of circulating MCF-7 cells in the lung. Similarly, equal numbers of MDA-MB-231-Anti-NC and MDA-MB-231-Anti-miR-615-3p were intravenously injected through the tail vein. In the control group (MDA-MB-231-Anti-NC), all 10 mice (10/10) developed lung metastasis, which is consistent with the high metastatic potential of MDA-MB-231. miR-615-3p knockdown significantly reduced lung metastasis of MDA-MB-231 cells. In the MDA-MB-231-Anti-miR-615-3p group, only 2 out of 10 (2/10) mice developed lung metastasis (Fig. 2c). Thus, miR-615-3p knockdown suppressed metastasis of MDA-MB-231 cells in vivo.

As an EMT-like process has been associated with breast cancer metastasis [25], we examined whether miR-615-3p promotes EMT. We measured the levels of the epithelial marker E-cadherin and the mesenchymal marker Vimentin in MCF-7-miR-615-3p and MCF-7-NC cells using both western blot analysis and immunofluorescence. Compared with the control of NC cells,

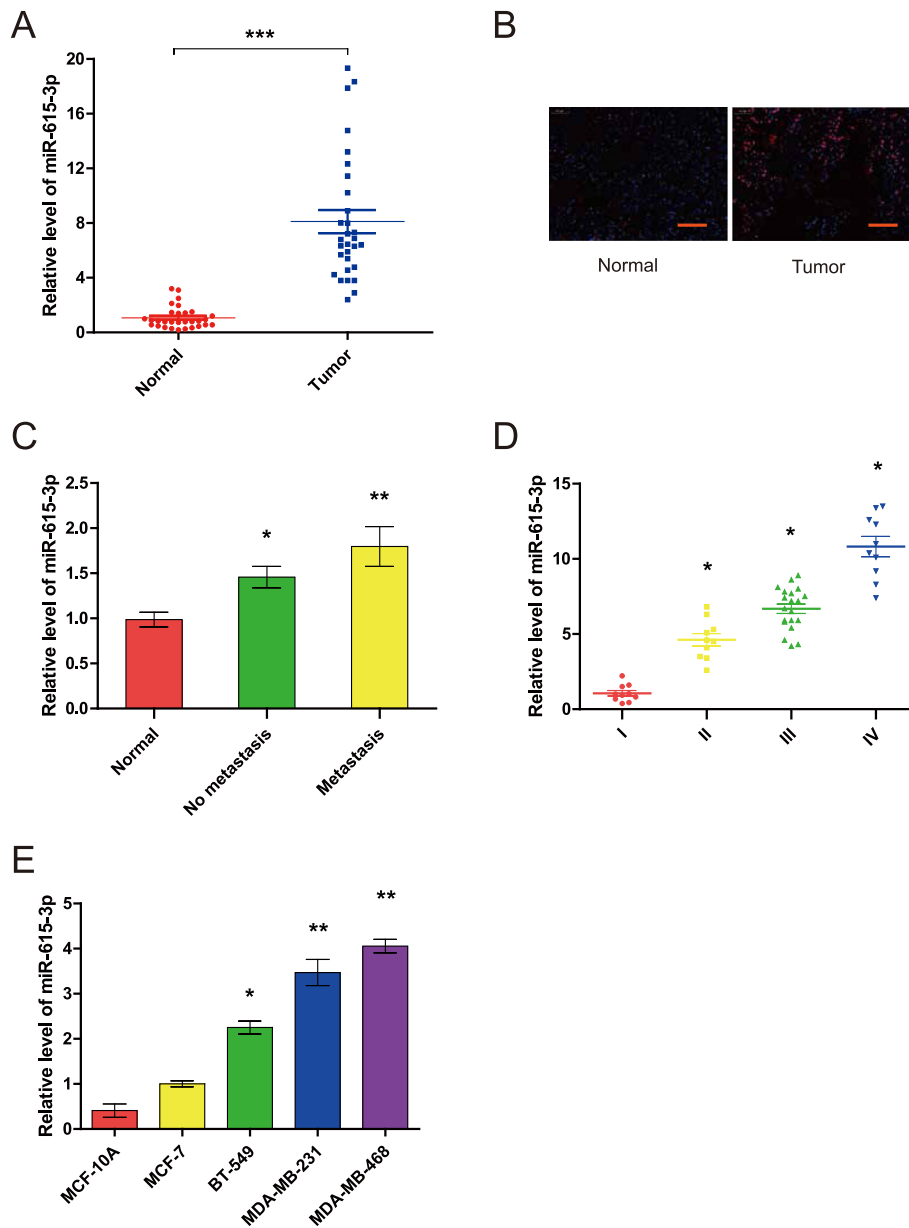


Fig. 1 The miR-615-3p level is upregulated in breast cancer tissues and breast cancer cell lines and positively correlated with the metastatic ability of breast cancer cells. (a) qRT-PCR analysis of miR-615-3p expression in human breast cancer tissue samples and their matched normal breast tissues from 30 breast cancer patients. (b) In situ hybridization analysis of miR-615-3p expression in human breast cancer tissues and matched normal tissues (scale bars = 100 μ m). (c) Relative expression of miR-615-3p in metastases and non-metastases tissues (N (Normal, No metastasis, Metastasis) = 51,31,20 respectively). (d) Relative expression of miR-615-3p with the progression of the clinical stage of breast cancer (N(I, II, III, IV) = 11,10,20,10 respectively). (e) qRT-PCR analysis of miR-615-3p expression in noncancerous human mammary epithelial cells (MCF-10A) and breast cancer cell lines (MCF-7, BT-549, MDA-MB-231, and MDA-MB-468 cells) with different metastatic potential

which had high E-cadherin expression and low Vimentin expression, MCF-7-miR-615-3p cells had significantly downregulated E-cadherin expression and upregulated Vimentin expression (Fig. 2d and e, left panel). Consistent with the EMT markers, SW480-miR-615-3p cells adopted a spindle-shaped, mesenchymal-like morphology in contrast to the epithelial-like morphology of

SW480-NC cells (data not shown). Hence ectopic miR-615-3p expression causes MCF-7 cells to undergo EMT. We then examined whether the silencing of miR-615-3p could impede the ability of cells to undergo EMT. miR-615-3p knockdown reduced Vimentin expression and upregulated E-cadherin expression in MDA-MB-231 cells, as shown by immunofluorescence and western blot

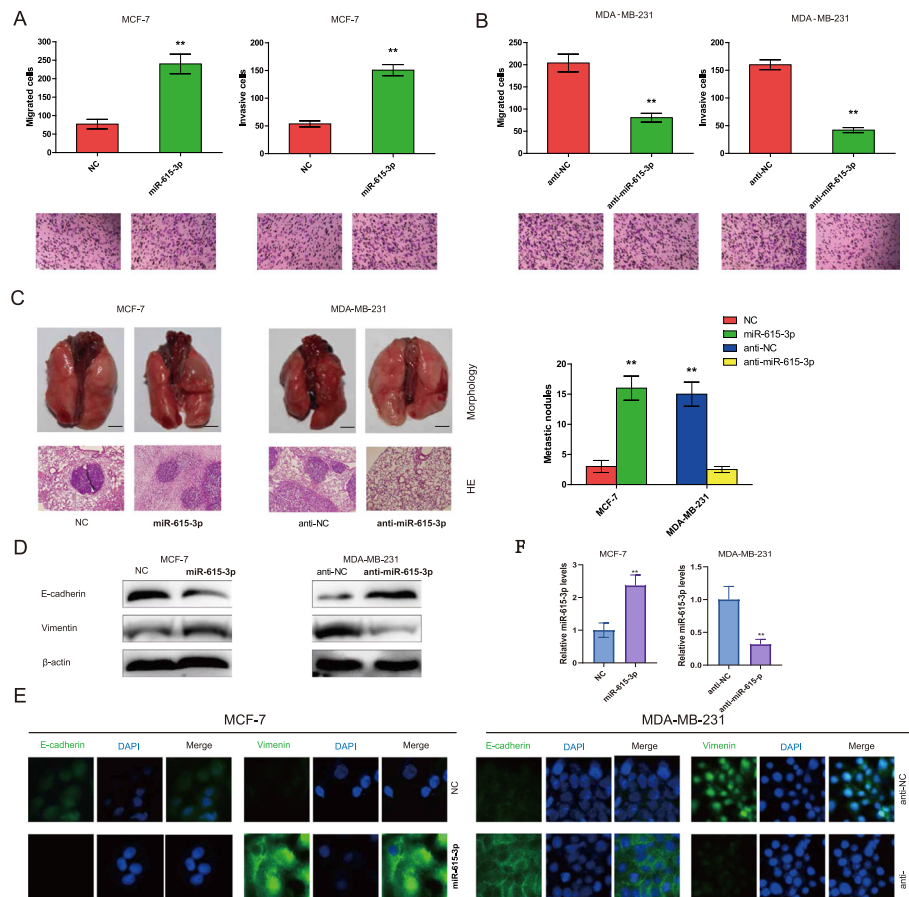


Fig. 2 miR-615-3p promotes breast cancer metastasis via EMT. **a** Transwell assay measuring MCF-7 cell migration (left panel) and invasion (right panel) with a control vector (NC) or with ectopic miR-615-3p expression. **b** Transwell assay measuring MDA-MB-231 cell migration (left panel) and invasion (right panel) with a control vector (Anti-NC) or with anti-miR-615-3p expression. **c** Representative images (left upper panel), H&E staining (left down panel), and the number of metastatic nodules (right panel) of lung metastasis. Ectopic miR-615-3p expression promoted lung metastasis of MCF-7 cells (left panel). Knockdown of endogenous miR-615-3p by antisense RNA suppressed lung metastasis of MDA-MB-231 cells (right panel). Western blot (**d** left panel) and immunofluorescence (**e** left panel)) of MCF-7 cells with a control vector (NC) or with ectopic miR-615-3p expression. Ectopic miR-615-3p down-regulated the epithelial marker E-cadherin, up-regulated the mesenchymal marker Vimentin. Western blot (**d** right panel) and immunofluorescence (**e** right panel) of MDA-MB-231 cells with a control vector (Anti-NC) or with antisense RNA against endogenous miR-615-3p (Anti-miR-615-3p). miR-615-3p knockdown suppressed induction of EMT, as indicated by downregulation of Vimentin and upregulation of E-cadherin. **f** The transfection efficiency of MCF-7(miR-615-p overexpression) and MDA-MB-231(anti-miR-615-p) was shown in the image

(Fig. 2d and e, right panel). Therefore, miR-615-3p knockdown impedes the ability of MDA-MB-231 cells to undergo an EMT-like process.

Collectively, the in vitro migration and invasion assays and in vivo metastasis assays, with ectopic expression of miR-615-3p in MCF-7 cells and knockdown of endogenous miR-615-3p in MDA-MB-231 cells, indicate that miR-615-3p promotes breast cancer metastasis.

miR-615-3p promotes TGF-β1-induced breast cancer cell migration via enhancing Smad2 and Smad3 activation

To determine the molecular mechanism of miR-615-3p in the regulation of breast cancer cell migration, we analyzed the effect of miR-615-3p on the TGF-β1 signal

pathway which is a critical EMT inducer in a number of cancer cells including breast cancer cells [26, 27]. TGF-β1 treatment induced phosphorylation of Smad2 and Smad3 in a time-dependent manner [28, 29]. However, knockdown of miR-615-3p suppressed this phosphorylation (Fig. 3a). In contrast, overexpression of miR-615-3p resulted in a significant increase in TGF-β1-induced phosphorylation of Smad2 and Smad3 (Fig. 3b), suggesting that miR-615-3p could function as a positive regulator of Smad2 and Smad3 activation in response to TGF-β1.

Although TGF-β1 treatment significantly increased the migratory and invasive potentials of MDA-MB-231 cells, however, knockdown of miR-615-3p inhibited TGF-β1-

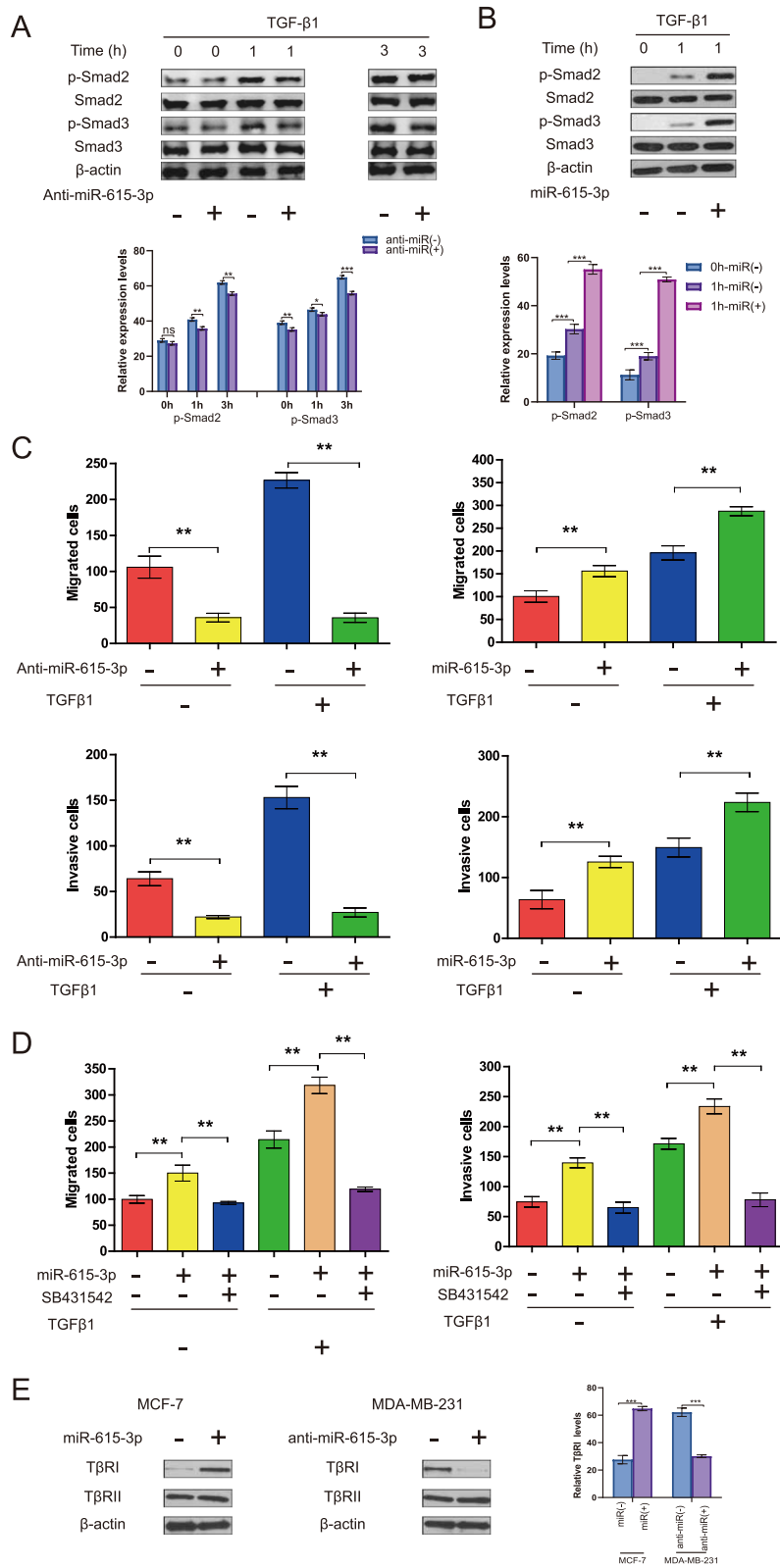


Fig. 3 (See legend on next page.)

(See figure on previous page.)

Fig. 3 miR-615-3p promotes TGF- β 1-induced breast cancer cell migration via enhancing Smad2 and Smad3 activation. **a** MDA-MB-231 cells were transfected with nonspecific control siRNA (Anti-NC) or miR-615-3p-targeted siRNA (Anti-miR-615-3p) and then treated with TGF- β 1 (5 ng/ml) for the indicated periods of time. Whole-cell lysates were blotted with the indicated antibodies. Relative protein level listed in lower panel histogram of **(a)** was calculated and compared (Student's t-test). **b** MCF-7 cells transfected with the control plasmid (NC) or miR-615-3p expression plasmid were treated with TGF- β 1 (5 ng/ml) for 1 h. Whole-cell lysates were blotted with the indicated antibodies. Relative protein level listed in lower panel histogram of **(b)** was calculated and compared (Student's t-test). **c** MDA-MB-231 (left panel) cells were transfected with nonspecific control siRNA (Anti-NC) or miR-615-3p-targeted siRNA (Anti-miR-615-3p), MCF-7 cells (right panel) were transfected with control plasmid (NC) or miR-615-3p expression plasmid, underwent Transwell migration and invasion assays in the presence or absence of TGF- β 1 (5 ng/ml). **d** MCF-7 cells transfected with the indicated reagents underwent Transwell migration and invasion assays in the presence or absence of SB431542 (10 μ M). Columns show the mean of three independent experiments performed in triplicate. **e** MCF-7 and MDA-MB-231 cells were transfected with indicated reagents, and whole-cell lysates were then blotted with the indicated antibodies. Relative protein level listed in right panel histogram of Fig. 3e was calculated and compared (Student's t-test)

induced cell migration (Fig. 3c). In contrast, overexpression of miR-615-3p resulted in a significant increase in TGF- β 1-induced cell migration and invasion (Fig. 3c), suggesting that miR-615-3p could be involved in the regulation of TGF- β 1-mediated responses.

We next investigated whether SB431542, a specific T β RI inhibitor, modulates miR-615-3p-induced cell migration and invasion. Treatment of MCF-7 cells with SB431542 significantly suppressed both basal and miR-615-3p-induced cell migration and invasion of MCF-7 cells (Fig. 3d), suggesting that miR-615-3p could be involved in the regulation of T β RI-mediated responses.

The TGF- β receptor internalization effectively decreasing TGF- β 1 signaling [30, 31], we next investigated whether miR-615-3p regulates plasma-membrane expression of T β RI. Western blot analysis revealed that miR-615-3p knockdown in MDA-MB-231 by siRNA decreased the expression level of T β RI, but not that of T β RII (Fig. 3e). In contrast, ectopic expression of miR-615-3p in MCF-7 cells increased the expression level of T β RI, but not that of T β RII (Fig. 3e). However, the T β RI mRNA level remained unchanged (data not shown), suggesting that miR-615-3p may modulate T β RI stability.

miR-615-3p directly targets PICK1

To understand the mechanisms by which miR-615-3p promotes breast cancer cell migration, several computational methods were used to help identify miR-615-3p targets in humans. As miR-615-3p increased Smad2 and Smad3 phosphorylation, we hypothesized that its potential targets should decrease modulate T β RI stability. Among those potential targets, protein interacting with C-kinase-1 (PICK1) is of particular interest because previously PICK1 was shown to antagonize transforming growth factor- β (TGF- β) signaling by targeting TGF- β type I receptor (T β RI) for degradation and acted as an important negative regulator of TGF- β signaling [21, 32]. Therefore, we decided to carry out a series of experiments to determine whether PICK1 is a direct target of miR-615-3p. First, we detected the effect of miR-615-3p on PICK1 expression. Although miR-615-3p

overexpression did not change PICK1 mRNA levels (Fig. 4a), there was a clear reduction in PICK1 protein levels in MCF-7 and T47D cells (Fig. 4b, upper panel). However, miR-615-3p silencing caused an increase in PICK1 protein levels in MDA-MB-468 and MDA-MB-231 cells (Fig. 4b, lower panel). These findings suggest that miR-615-3p targets PICK1 through translational inhibition. Next, we generated wild-type and mutant PICK1-3'-UTR expression plasmids that were fused to a luciferase reporter according to the matched sequence between PICK1-3'-UTR and miR-615-3p (Fig. 4c). We found miR-615-3p overexpression significantly inhibited luciferase activity of wild-type but not mutant reporter genes in MCF-7 cells (Fig. 4d, left). However, miR-615-3p silencing specifically enhanced the luciferase activity of wild-type but not mutant PICK1-3'-UTR (Fig. 4d, right).

miR-615-3p overexpression and PICK1 inhibition produce similar changes, which are rescued by PICK1 ectopic expression in vitro

We further found that knockdown of PICK1 produced similar changes in invasion and migration assay to that of miR-615-3p overexpression (Fig. 5a). To determine whether these effects depend specifically on PICK1 suppression, we used an expression construct that encodes the entire PICK1 coding sequence but lacks the 3'UTR. Unsurprisingly, the re-expression of PICK1 completely inhibited miR-615-3p-mediated invasion and migration (Fig. 5a). This suggests that, after miR-615-3p overexpression, a decrease in PICK1 is required for cells to show increased invasiveness and migration.

Then we ask whether PICK1 connects miR-615-3p and EMT. The loss of E-cadherin is the hallmark of EMT. Interestingly, MCF-7 cells changed from round to a spindle-like mesenchymal phenotype after knockdown of PICK1 (Fig. 5b), which mimic the effect of miR-615-3p on EMT. Furthermore, knockdown of PICK1 also significantly reduced the E-cadherin but increased the Vimentin levels (Fig. 5c).

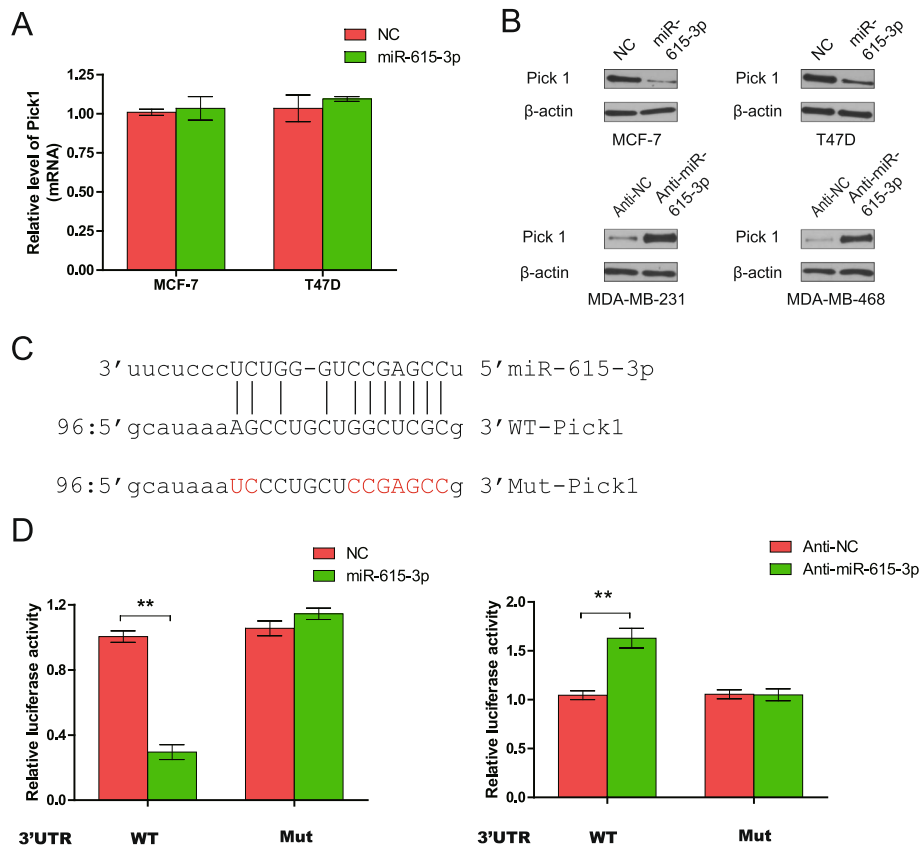


Fig. 4 PICK1 is a direct target of miR-615-3p. **a** The real-time PCR analysis of PICK1 mRNA level in MCF-7 and T47D cells infected with miR-615-3p-expressing or control vector. **b** Western blot analysis of PICK1 protein levels in MCF-7 and T47D cells infected with miR-615-3p-expressing or control vector (upper panel). And Western blot analysis of PICK1 protein level in MDA-MB-468 and MDA-MB-231 cells transfected with anti-miR-615-3p or control oligo (lower panel). **c** Gene structure of PICK1 showing the predicted target site of miR-615-3p in its 3'-UTR. **d** MCF-7 cells were transfected with a reporter gene containing wild-type (3'UTR-WT) or mutant (3'UTR-Mu) PICK1 3'-UTR along with miR-615-3p or control vector, anti-miR-615-3p or control oligo as indicated in MDA-MB-231 cells

The TGF-β signaling network plays an essential role in the EMT of breast cancer cells. To determine whether PICK1 regulation of EMT is functionally associated with the TGFβ signaling pathway which is important for miR-615-3p-mediated EMT, we analyzed the expression levels of TβRI and TβRII in MCF7 and T47D cells with PICK1 knockdown. Among the TβRs, the amount of TβRI significantly increased in MCF7 and T47D cells on PICK1 knockdown, though little change was detected in TβRII (Fig. 5c). These results clearly show that PICK1 regulates TβRI expression in breast cancer cells.

Taken together, these data indicated that the ability of miR-615-3p to promote metastasis is attributable, in significant part, to its capacity to inhibit PICK1.

High miR-615-3p and low PICK1 levels correlate with aggressive characteristics of clinical breast cancers

We next examined the clinical relevance of altered miR-615-3p and PICK1 expression in human breast cancers. We found that the levels of the PICK1 mRNA were

lower in breast cancer tissues than in non-cancerous tissues (Fig. 6a) and correlated with lymphatic metastasis and the histological grade of the tumor (Fig. 6b and c). We also investigated the relationship between miR-615-3p expression and the mRNA and protein levels of PICK1 in breast cancer patients. The level of miR-615-3p was inversely correlated with those of the PICK1 mRNA (Fig. 6d). We measured PICK1 protein levels in human breast cancer and matched non-cancerous tissues using immunohistochemical staining (Fig. 6e). The level of miR-615-3p was inversely correlated with those of the PICK1 protein levels (Fig. 6f), suggesting that miR-615-3p promotes the malignant phenotypes of breast cancer by targeting PICK1.

PICK1 inhibits the binding of DICER1 to Smad2/3 and the processing of pre-miR-615-3p to mature miR-615-3p

Given that SMAD effectors of TGF-β1 signaling can interact with DICER1 to promote primary miR-21 processing into precursor miR-21 [33], We hypothesize that

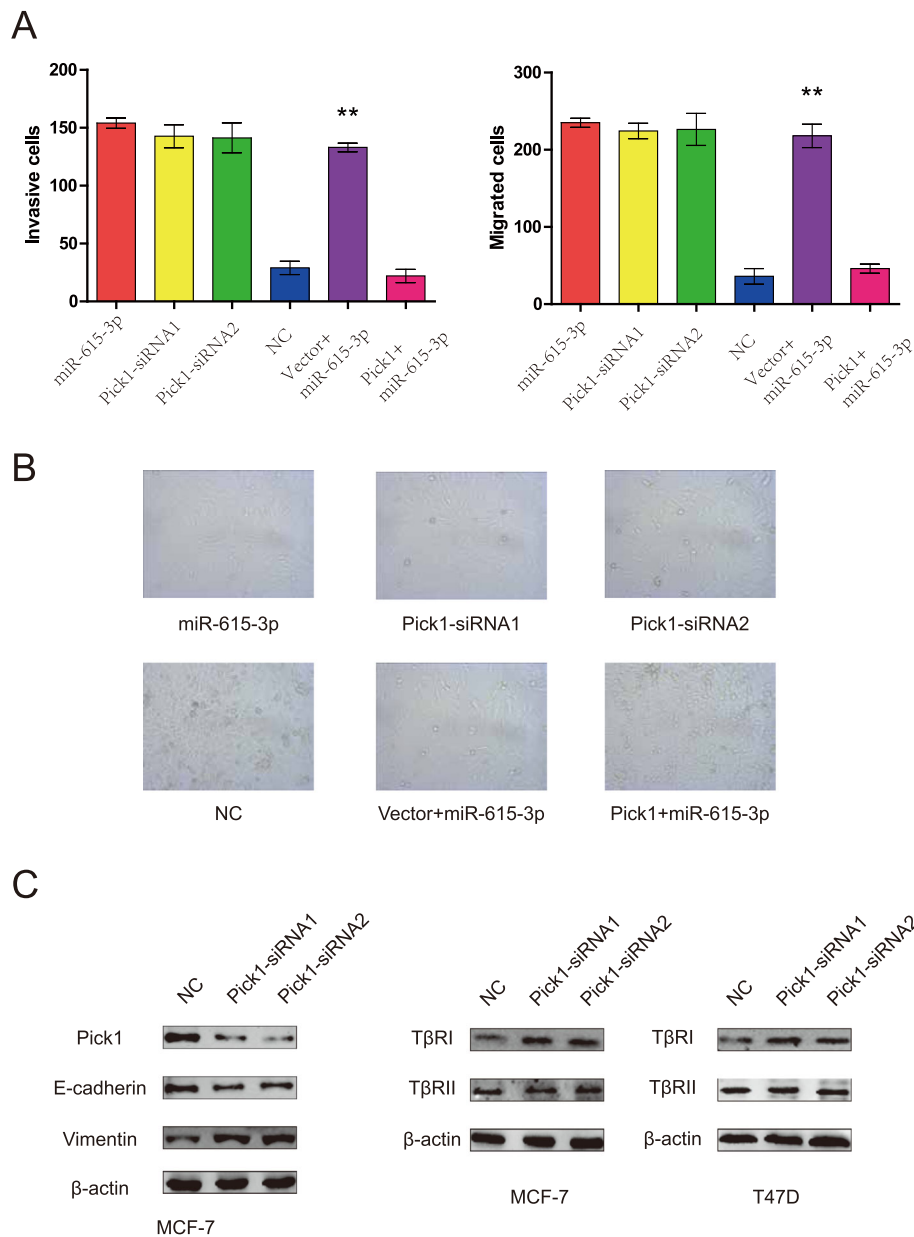
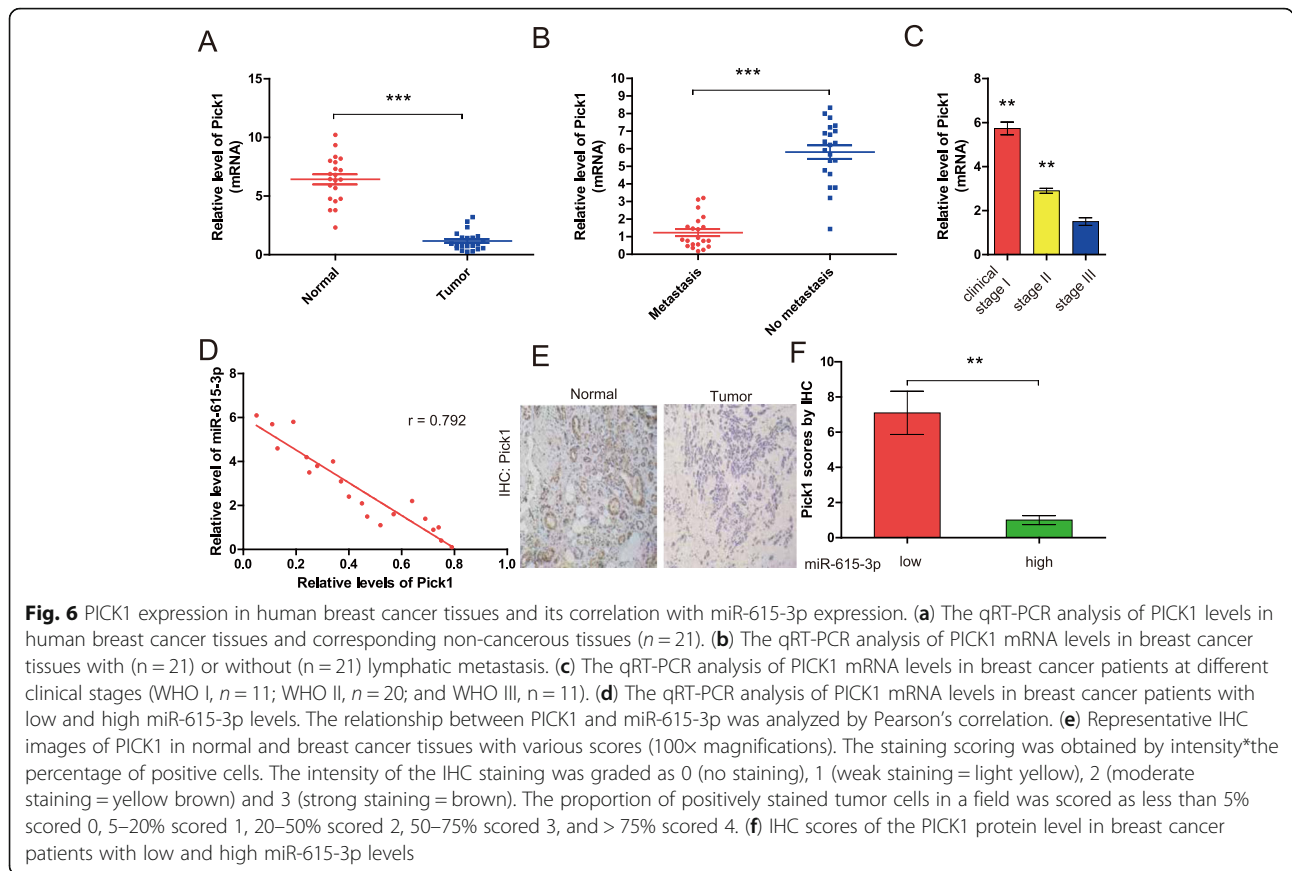


Fig. 5 miR-615-3p overexpression and PICK1 inhibition produce similar changes, which are restored by PICK1 ectopic expression in vitro. **(a)** Transwell invasion and migration assays of MCF-7 cells were performed after transfection with negative control (NC), siRNA against PICK1, and/or miR-615-3p, PICK1(lacks the 3'UTR) as indicated. **(b)** Phase contrast microscopy of MCF-7 cells transfected as indicated (scale bars, 50 μm). **(c)** MCF-7 cells were transfected with PICK1 siRNAs, then PICK1, E-cadherin, Vimentin, TβRI and TβRII protein levels were detected by Western blot analysis (left panel). Western blot analysis was used to determine the effect of PICK1 knockdown on TβRI and TβRII expressions in MCF-7 and T47D cells (right two panels). β-actin served as an internal control

overexpression of PICK1 disrupts the association of p-SMAD2 and p-SMAD3 with DICER1 and thus decreases the processing of pre-miR-615-3p to mature miR-615-3p in breast cancer cells. To assess this hypothesis, we transfected MDA-MB-231 cells with PICK1 overexpression or control vectors, and then performed co-immunoprecipitation-RT-qPCR studies using an antibody that targets SMAD2/3. We found that DICER1 co-

precipitated along with SMAD2/3 in the control group, but this binding was significantly decreased in MDA-MB-231 cells with PICK1 overexpression (Fig. 7a). After RNA bound to the protein complexes was isolated, a significant decrease of pre-miR-615-3p in MDA-MB-231 cells with PICK1 overexpression was observed (Fig. 7b). When the anti-SMAD2/3 antibody was substituted by a non-specific IgG in control assays, pre-miR-615-3p was



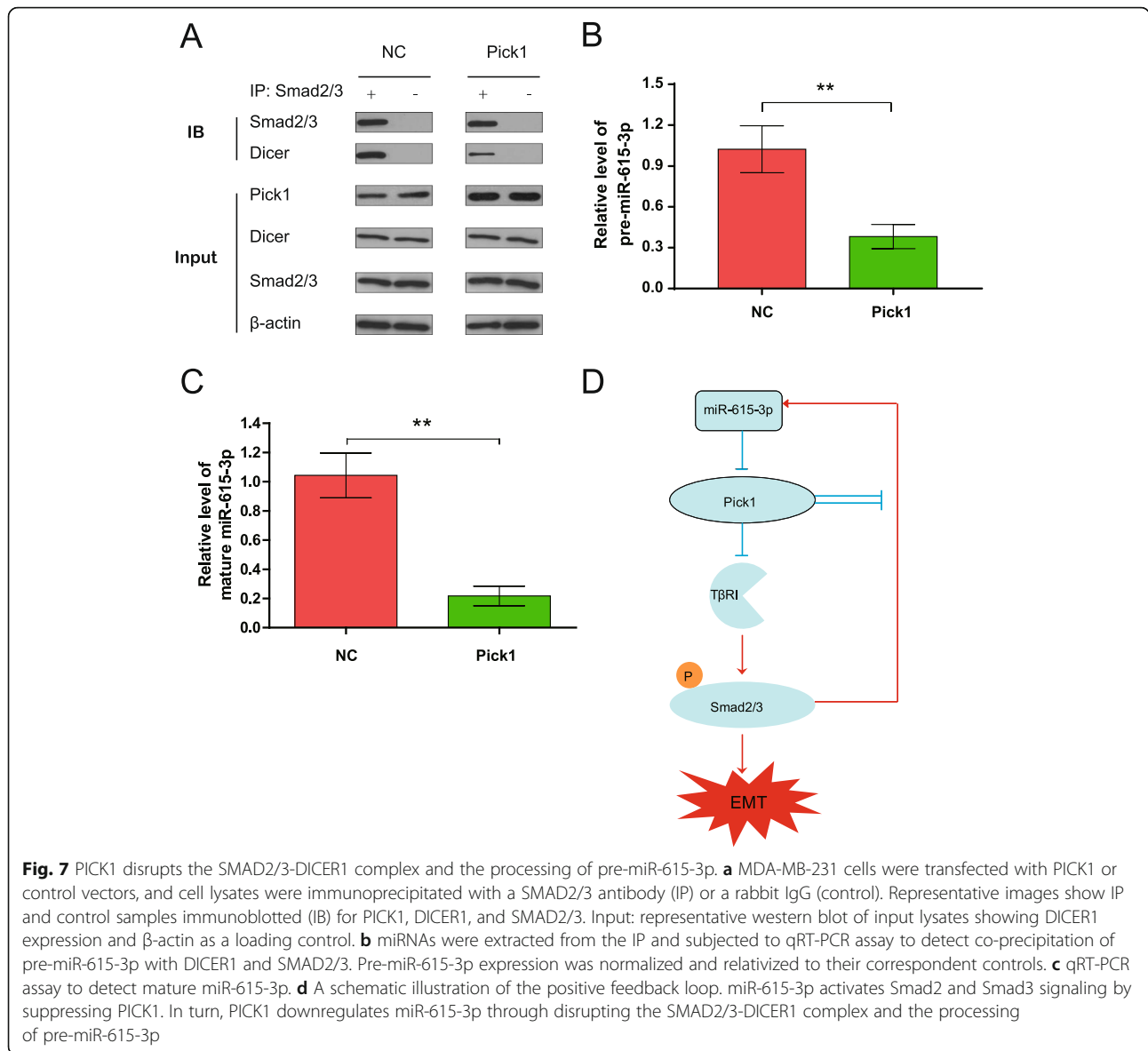
absent of the immunoprecipitated complexes (data not shown). RT-qPCR studies showed a 5.1 fold decrease of mature miR-615-3p in MDA-MB-231 cells with PICK1 overexpression compared to control (Fig. 7c). Together, our data suggest that PICK1 inhibits the binding of DICER1 to Smad2/3 and the processing of pre-miR-615-3p to mature miR-615-3p in breast cancer cells, thus exerting a negative feedback loop (Fig. 7d).

Discussion

Accumulating pieces of evidence have indicated that the miRNA system plays a critical role in the process of EMT [15, 34]. In our attempt to identify miRNAs expressed in breast cancer cells, we found that the amount of miR-615-3p is elevated in breast cancer cells and tissues compared with normal controls, ectopic miR-615-3p expression in breast cancer cells promoted EMT traits. The tumor-promoting role of miR-615-3p is linked to its ability to directly target 3'-UTR of PICK1. However, TβRI knockdown by siRNA or inhibition with SB431542 is sufficient to revert breast cancer cell migration and invasion enhanced by miR-615-3p. Opposite to miR-615-3p, PICK1 is preferentially expressed in human normal tissues and cells. The inverse correlation between miR-615-3p and PICK1 expression is consistent

with our finding that miR-615-3p promotes EMT by diminishing PICK1 expression. In turn, PICK1 inhibits the binding of DICER1 to Smad2/3 and the processing of pre-miR-615-3p to mature miR-615-3p in breast cancer cells, thus exerting a negative feedback loop. These findings have implications for the potential application of miR-615-3p/PICK1/Smad2/3 axis in breast cancer treatment.

miRNAs have been implicated in almost all aspects of cancer biology, including angiogenesis, drug resistance, apoptosis, proliferation, invasion, and metastasis [35]. It has been shown that miRNAs may act as tumor suppressors or oncogenes in many cancers, depending on which pathways or genes they regulate [36]. However, very little was known about the role of miR-615-3p in tumor biology. A recent study has described that miR-615-3p is significantly upregulated in HCC patients with recurrence compared to the patients without recurrence [37]. Although in vitro experiments demonstrated that the miR-615-3p expression level is significantly correlated with malignant characteristics in HCC cell, the direct downstream genes targeted by miR-615-3p was not identified. Consistent with this report, our data indicate that miR-615-3p overexpression significantly promoted the in vitro migration and invasion, and in vivo



pulmonary metastasis of breast cancer cells. Moreover, Subsequent mechanism studies revealed that miR-615-3p promoted EMT program by directly targeting PICK1. These findings along with previous studies indicate that miR-615-3p may mainly function as an onco-miRNA. In the future, there will be more targeted genes to be identified in other cancers.

Mechanistically, the increase of miR-615-3p in breast cancer may imply that miR-615-3p has an important role in signaling regulation. Indeed, we found that miR-615-3p specifically inhibits PICK1, leading to the stabilization of TGFBR1 and the activation of the transcription factors SMAD2 and SMAD3. Although many miRNAs have been implicated in disrupting or increasing the TGF- β pathway [37]. To our knowledge, this is the first study to report that miRNA can regulate the

PICK1 level. Indeed, PICK1 has an important role in breast cancer and other cancer initiation [19]. Thus, this study provides an alternative mechanism to regulate PICK1 for miRNAs.

Apparently, one miRNA may regulate many genes as its targets, while one gene may be targeted by many miRNAs [38]. Thus, miR-615-3p is very likely to regulate other genes simultaneously to promote breast tumor growth. In addition, PICK1 can also be targeted by other miRNAs than miR-615-3p. We postulated that one signal axis such as miR-615-3p/PICK1 has a critical role in specific cellular signaling and its function in breast cancer depends on the genetic context. Despite multiple relationships, our data provide solid evidence that the miR-615-3p/PICK1 axis has an important role in breast cancer cell migration and invasion. Thus, we strongly

believe that targeting this pathway may be a potential therapeutic approach for the treatment of breast cancer.

The involvement of PICK1 in tumorigenesis has been suggested in several human cancers [21]. For example, PICK1 expression is down-regulated in grade IV astrocytic tumor cell lines and also in clinical cases of the disease in which grade IV tumors have progressed from lower-grade tumors. Exogenous expression of PICK1 in the grade IV astrocytic cell line U251 reduces their capacity for anchorage-independent growth, two-dimensional migration, and invasion through a three-dimensional matrix, strongly suggesting that low PICK1 expression plays an important role in astrocytic tumorigenesis [20]. However, we found that PICK1 is hardly detectable in breast cancer tissue but exhibits a higher level in normal breast tissue. The knockdown of PICK1 confers epithelial-like breast cancer cells with the ability to invade Matrigel and to disseminate. The consistency seen in the *in vivo* model and the excellent correlation between PICK1 expression and survival of patients with breast cancer in breast tumors supports the role of PICK1 in breast tumorigenicity established by our experimental studies. Based on this, one potential treatment option could be a combination of tamoxifen and a miR-615-3p inhibitor, which would work synergistically to prevent breast cancer tumorigenesis by controlling the process of EMT.

Herein, we assess the role of PICK1 on the TGF- β signaling effectors SMAD2/3 and DICER1 in the processing of pre-miR-615-3p to yield mature miR-615-3p in breast cancer cells. We also explored the functional coupling between activated SMAD2/3 and DICER1 to control the biogenesis of miR-615-3p in breast cancer. As expected, it was found that PICK1 controls the posttranscriptional processing of miR-615-3p through a direct protein-protein interaction between p-SMAD2/3 and the ribonuclease DICER1 in the pre-miR-615-3p maturation complex. This new TGF- β -dependent regulatory mechanism is consistent with previous reports that p-SMAD2/3 interacts with DICER1 or Drosha to promote pre-miR-21 processing [33]. Recently, PICK1 was reported to regulate miRNA-mediated translational repression by controlling Ago2 localization [39]. It will be interesting to demonstrate if Ago2 is implicated in miR-615-3p-mediated PICK1 repression in breast cancer cells.

Conclusions

In summary, our data strongly suggest that concurrent gain of miR-615-3p and loss of PICK1 expression may be an important step in breast tumor progression and metastasis, highlighting the potential role of miR-615-3p in the prognostic evaluation and therapeutic application for breast cancers.

Abbreviations

EMT: epithelial-mesenchymal transition; miRNAs: microRNAs; qRT-PCR: quantitative real-time polymerase chain reaction; TGF- β : The transforming growth factor- β ; PICK1: Protein interacting with C kinase 1; ATCC: American type culture collection; 3'-UTR: 3'-untranslated regions

Acknowledgments

The authors thank the personnel at Harbin Medical University Cancer Hospital and The Second Affiliated Hospital of Harbin Medical University for their generous help.

Authors' contributions

Design: YWL, HJJ, Experimental operation: BL, DDW, MZ, YWD. Acquisition of data and Analysis (acquired and managed patients' information and statistical analysis): BL, DDW, MZ. Writing, review, and/or revision of the manuscript: BL, DDW, MZ. All authors read and approved the final manuscript.

Funding

The study was supported by research funding from Heilongjiang Postdoctoral Financial Assistance (LBH-Z17111), The Health and Family Planning Commission Research Project of Heilongjiang Province (2018252), National Key Research and Development Program of China (2019YFC0118100), National Natural Science Foundation of China (81671760 and 81873910).

Availability of data and materials

All data generated or analyzed during this study are included in this article.

Ethics approval and consent to participate

All Procedures performed in studies involving human participants or animals were reviewed and granted by the Ethical Committee of Harbin Medical University in Harbin, China. Informed consent was obtained from all the patients.

Consent for publication

Not applicable.

Competing interests

The authors declare that they have no competing interests.

Author details

¹Department of Breast Surgery, Harbin Medical University Cancer Hospital, 150 Haping Road, Harbin 150086, China. ²Department of Radiology, The Second Affiliated Hospital of Harbin Medical University, 246 Xuefu Road, Harbin 150086, China. ³Department of Oncology, The Second Affiliated Hospital of Harbin Medical University, 246 Xuefu Road, Harbin 150086, China.

Received: 16 December 2019 Accepted: 14 April 2020

Published online: 26 April 2020

References

- Bray F, et al. Global cancer statistics 2018: GLOBOCAN estimates of incidence and mortality worldwide for 36 cancers in 185 countries. *CA Cancer J Clin*. 2018;68(6):394–424.
- Mohammad N, et al. Strategy to enhance efficacy of doxorubicin in solid tumor cells by methyl-beta-cyclodextrin: involvement of p53 and Fas receptor ligand complex. *Sci Rep*. 2015;5:11853.
- Muhammad N, et al. Bitter melon extract inhibits breast cancer growth in preclinical model by inducing autophagic cell death. *Oncotarget*. 2017;8(39):66226–36.
- David CJ, et al. TGF-beta tumor suppression through a lethal EMT. *Cell*. 2016;164(5):1015–30.
- Kashiwagi I, et al. Smad2 and Smad3 inversely regulate TGF-beta autoinduction in *Clostridium butyricum*-activated dendritic cells. *Immunity*. 2015;43(1):65–79.
- Souza-Fonseca-Guimaraes F, Smyth MJ. Myeloid TGF-beta responsiveness promotes metastases. *Cancer Discov*. 2013;3(8):846–8.
- Criswell TL, et al. Knockdown of the transforming growth factor-beta type III receptor impairs motility and invasion of metastatic cancer cells. *Cancer Res*. 2008;68(18):7304–12.

8. Guo X, et al. Ligand-dependent ubiquitination of Smad3 is regulated by casein kinase 1 gamma 2, an inhibitor of TGF-beta signaling. *Oncogene*. 2008;27(58):7235–47.
9. Ma L, Teruya-Feldstein J, Weinberg RA. Tumour invasion and metastasis initiated by microRNA-10b in breast cancer. *Nature*. 2007;449(7163):682–8.
10. Xu Y, et al. Twist1 promotes breast cancer invasion and metastasis by silencing Foxa1 expression. *Oncogene*. 2017;36(8):1157–66.
11. Davis FM, et al. Induction of epithelial-mesenchymal transition (EMT) in breast cancer cells is calcium signal dependent. *Oncogene*. 2014;33(18):2307–16.
12. Muhammad N, et al. Involvement of c-Fos in the promotion of Cancer stem-like cell properties in head and neck squamous cell carcinoma. *Clin Cancer Res*. 2017;23(12):3120–8.
13. Rupaimoole R, Slack FJ. MicroRNA therapeutics: towards a new era for the management of cancer and other diseases. *Nat Rev Drug Discov*. 2017;16(3):203–22.
14. Muhammad N, et al. Anti-miR-203 suppresses ER-positive breast cancer growth and stemness by targeting SOCS3. *Oncotarget*. 2016;7(36):58595–605.
15. Wang R, et al. Downregulation of miRNA-214 in cancer-associated fibroblasts contributes to migration and invasion of gastric cancer cells through targeting FGF9 and inducing EMT. *J Exp Clin Cancer Res*. 2019;38(1):20.
16. Zhang M, et al. Sequence diverse miRNAs converge to induce mesenchymal-to-epithelial transition in ovarian cancer cells through direct and indirect regulatory controls. *Cancer Lett*. 2019;459:168–75.
17. Zhang S, et al. MicroRNA-24 upregulation inhibits proliferation, metastasis and induces apoptosis in bladder cancer cells by targeting CARMA3. *Int J Oncol*. 2015;47(4):1351–60.
18. Dev KK. Making protein interactions druggable: targeting PDZ domains. *Nat Rev Drug Discov*. 2004;3(12):1047–56.
19. Zhang B, et al. Protein interacting with C alpha kinase 1 (PICK1) is involved in promoting tumor growth and correlates with poor prognosis of human breast cancer. *Cancer Sci*. 2010;101(6):1536–42.
20. Cockbill LM, et al. Protein interacting with C kinase 1 suppresses invasion and anchorage-independent growth of astrocytic tumor cells. *Mol Biol Cell*. 2015;26(25):4552–61.
21. Zhao B, et al. PICK1 promotes caveolin-dependent degradation of TGF-beta type I receptor. *Cell Res*. 2012;22(10):1467–78.
22. Hoss AG, et al. MicroRNAs located in the Hox gene clusters are implicated in huntington's disease pathogenesis. *PLoS Genet*. 2014;10(2):e1004188.
23. Yan T, et al. HoxC5 and miR-615-3p target newly evolved genomic regions to repress hTERT and inhibit tumorigenesis. *Nat Commun*. 2018;9(1):100.
24. Zhang J, et al. Hypoxia-induced TPM2 methylation is associated with Chemoresistance and poor prognosis in breast Cancer. *Cell Physiol Biochem*. 2018;45(2):692–705.
25. Zhou, W., et al., The lncRNA H19 mediates breast cancer cell plasticity during EMT and MET plasticity by differentially sponging miR-200b/c and let-7b. *Sci Signal*, 2017. 10(483): eaak9557.
26. Tu CF, et al. FUT8 promotes breast cancer cell invasiveness by remodeling TGF-beta receptor core fucosylation. *Breast Cancer Res*. 2017;19(1):111.
27. Zhao Z, et al. CtBP promotes metastasis of breast cancer through repressing cholesterol and activating TGF-beta signaling. *Oncogene*. 2019;38(12):2076–91.
28. Huo YY, et al. Activation of extracellular signal-regulated kinase by TGF-beta1 via TbetaRII and Smad7 dependent mechanisms in human bronchial epithelial BEP2D cells. *Cell Biol Toxicol*. 2007;23(2):113–28.
29. Islam SS, et al. TGF-beta1 induces EMT reprogramming of porcine bladder urothelial cells into collagen producing fibroblasts-like cells in a Smad2/Smad3-dependent manner. *J Cell Commun Signal*. 2014;8(1):39–58.
30. Eichhorn PJ, et al. USP15 stabilizes TGF-beta receptor I and promotes oncogenesis through the activation of TGF-beta signaling in glioblastoma. *Nat Med*. 2012;18(3):429–35.
31. Chen W, et al. Beta-arrestin 2 mediates endocytosis of type III TGF-beta receptor and down-regulation of its signaling. *Science*. 2003;301(5638):1394–7.
32. Dai Y, et al. The TGF-beta signalling negative regulator PICK1 represses prostate cancer metastasis to bone. *Br J Cancer*. 2017;117(5):685–94.
33. Garcia R, et al. P-SMAD2/3 and DICER promote pre-miR-21 processing during pressure overload-associated myocardial remodeling. *Biochim Biophys Acta*. 2015;1852(7):1520–30.
34. Zhang X, et al. Hypoxic BMSC-derived exosomal miRNAs promote metastasis of lung cancer cells via STAT3-induced EMT. *Mol Cancer*. 2019;18(1):40.
35. Esquela-Kerscher A, Slack FJ. Oncomirs - microRNAs with a role in cancer. *Nat Rev Cancer*. 2006;6(4):259–69.
36. Lin S, Gregory RI. MicroRNA biogenesis pathways in cancer. *Nat Rev Cancer*. 2015;15(6):321–33.
37. Kang, H., Role of MicroRNAs in TGF-beta Signaling Pathway-Mediated Pulmonary Fibrosis. *Int J Mol Sci*, 2017. 18(12): 2527.
38. Pu M, et al. Regulatory network of miRNA on its target: coordination between transcriptional and post-transcriptional regulation of gene expression. *Cell Mol Life Sci*. 2019;76(3):441–51.
39. Antoniou A, et al. PICK1 links Argonaute 2 to endosomes in neuronal dendrites and regulates miRNA activity. *EMBO Rep*. 2014;15(5):548–56.

Publisher's Note

Springer Nature remains neutral with regard to jurisdictional claims in published maps and institutional affiliations.

Ready to submit your research? Choose BMC and benefit from:

- fast, convenient online submission
- thorough peer review by experienced researchers in your field
- rapid publication on acceptance
- support for research data, including large and complex data types
- gold Open Access which fosters wider collaboration and increased citations
- maximum visibility for your research: over 100M website views per year

At BMC, research is always in progress.

Learn more [biomedcentral.com/submissions](https://www.biomedcentral.com/submissions)

