

RESEARCH

Open Access



Temporal trends of incident diabetes mellitus and subsequent outcomes in patients receiving kidney transplantation: a national cohort study in Taiwan

Hsuan Yeh^{1,2†}, Chihung Lin^{3†}, Yan-Rong Li⁴, Chieh-Li Yen^{1,2}, Cheng-Chia Lee^{1,2}, Jung-Sheng Chen³, Kuan-Hsing Chen^{1,2}, Ya-Chun Tian^{1,2}, Pi-Hua Liu^{4,5*} and Ching-Chung Hsiao^{1,2,6*}

Abstract

Background: Allograft kidney transplantation has become a treatment of choice for patients with end-stage renal disease (ESRD), and post-transplant diabetes mellitus (PTDM) has been associated with impaired patient and graft survival. Taiwan has the highest incidence and prevalence rates of ESRD with many recipients and candidates of kidney transplantation. However, information about the epidemiologic features of PTDM in Taiwan is incomplete. Therefore, we aimed to investigate the prevalence and incidence of PTDM with subsequent patient and graft outcomes.

Methods: Using the Taiwan National Health Insurance Research Database (NHIRD), 3663 kidney recipients between 1997 and 2011 were enrolled. We calculated the cumulative incidences of diabetes mellitus (DM) after transplantation. Cox proportional hazards model with competing risk analysis was used to calculate the hazard ratio (HR) and 95% confidence intervals (CI) between three targeted groups (DM, PTDM, non-DM). The outcomes of primary interest were the occurrence of graft failure excluding death with functioning graft, all-cause mortality, death with functioning graft and major adverse cardiovascular events (MACE) including myocardial infarction (MI), cerebrovascular accident (CVA) and congestive heart failure (CHF). Subgroup analysis for graft failure excluding death with functioning graft, MACE and all-cause mortality was performed, and interaction between PTDM and recipient age was examined.

Results: Of 3663 kidney transplant recipients, 531 (14%) had pre-existing DM and 631 (17%) developed PTDM. Compared with non-DM group, the PTDM and DM groups exhibited higher risk of graft failure excluding death with functioning graft (PTDM: HR 1.65, 95% CI 1.47–1.85; DM: HR 1.33, 95% CI 1.18–1.50), MACE (PTDM: HR 1.51, 95% CI 1.31–1.74; DM: HR 1.64, 95% CI 1.41–1.9), all-cause mortality (PTDM: HR 1.79, 95% CI 1.59–2.01; DM: HR 2.03, 95% CI 1.81–2.18), and death with functioning graft (PTDM: HR 1.94, 95% CI 1.71–2.20; DM: HR 1.94, 95% CI 1.71–2.21). Both PTDM and DM groups had increased cardiovascular disease-related mortality (PTDM: HR 2.14, 95% CI 1.43–3.20, $p < 0.001$; DM: HR 1.89, 95% CI 1.25–2.86, $p = 0.002$), cancer-related mortality (PTDM: HR 1.56, 95% CI 1.18–2.07, $p = 0.002$; DM: HR 1.89, 95% CI 1.25–2.86, $p = 0.027$), and infection-related mortality (PTDM: HR 1.47, 95% CI 1.14–1.90,

*Correspondence: phliu@mail.cgu.edu.tw; colinhua0123@gmail.com

†Hsuan Yeh and Chi-Hung Lin contributed equally to this manuscript

⁵ Clinical Informatics and Medical Statistics Research Center, College of Medicine, Chang Gung University, Taoyuan, Taiwan

⁶ Department of Nephrology, New Taipei Municipal TuCheng Hospital, New Taipei, Taiwan

Full list of author information is available at the end of the article



$p = 0.003$; DM: HR 2.25, 95% CI 1.77–2.84, $p < 0.001$) compared with non-DM group. The subgroup analyses showed that the add-on risks of MACE and mortality from PTDM were mainly observed in patients who were younger and those without associated comorbidities including atrial fibrillation, cirrhosis, CHF, and MI. Age significantly modified the association between PTDM and MACE ($p_{\text{interaction}} < 0.01$) with higher risk in recipients with PTDM aged younger than 55 years (adjusted HR 1.64, 95% CI 1.40–1.92, $p < 0.001$). A trend ($p_{\text{interaction}} = 0.06$) of age-modifying effect on the association between PTDM and all-cause mortality was also noted with higher risk in recipients with PTDM aged younger than 55 years.

Conclusions: In the present population-based study, the incidence of PTDM peaked within the first year after kidney transplantation. PTDM negatively impacted graft and patient outcomes. The magnitude of cardiovascular and survival disadvantages from PTDM were more pronounced in recipients aged less than 55 years. Further trials to improve prediction of PTDM and to prevent PTDM are warranted.

Keywords: Post-transplantation diabetic mellitus, Kidney transplantation, Graft failure

Background

End-stage renal disease (ESRD) is a leading cause of morbidity and mortality worldwide. Taking care of patients with ESRD caused great expenditure and has become a financial burden to healthcare system [1, 2]. According to US Renal Data System (USRDS) 2018 Annual Data Report, Taiwan reported the highest incidence (493 per million population) and prevalence (3392 per million population) rate of ESRD in 2016 [3]. Allograft kidney transplantation has become a treatment of choice for patients with ESRD which is more cost-effective and has less impact on patients' quality of life as compared with dialysis [4]. Following the introduction of cyclosporin and other novel immunosuppressive regimens, the outcomes of kidney transplant recipients have been improving. Although the patient survival after kidney transplant is superior to that of patients on maintenance dialysis, the survival of the recipients is still worse than the general population, and improving the survival of transplant patients remains an important goal of post-transplant care [5]. Post-transplantation diabetes mellitus (PTDM) was reported to correlate with poorer patient and graft survival [6, 7]. In Taiwan, there was only one single-center study of 358 kidney transplant recipients from 1986 to 2006 assessing the local incidence and risk factors of PTDM [8], but hitherto no nationwide study of the issue is available. Thus, a comprehensive understanding of the native epidemiology of PTDM and clinical observation of its role in the transplant outcomes is desirable. The National Health Insurance (NHI) program has been implemented in Taiwan since March 1995 under the Bureau of NHI of the Department of Health. The Taiwan NHI Research Database (NHIRD) contains all medical behaviors and services recorded by codes for the International Classification of Diseases, Ninth Revision (ICD-9th) and has been used widely in academic studies [9]. With the use of the NHIRD, the present study evaluated the incidence of PTDM and analyzed its associated

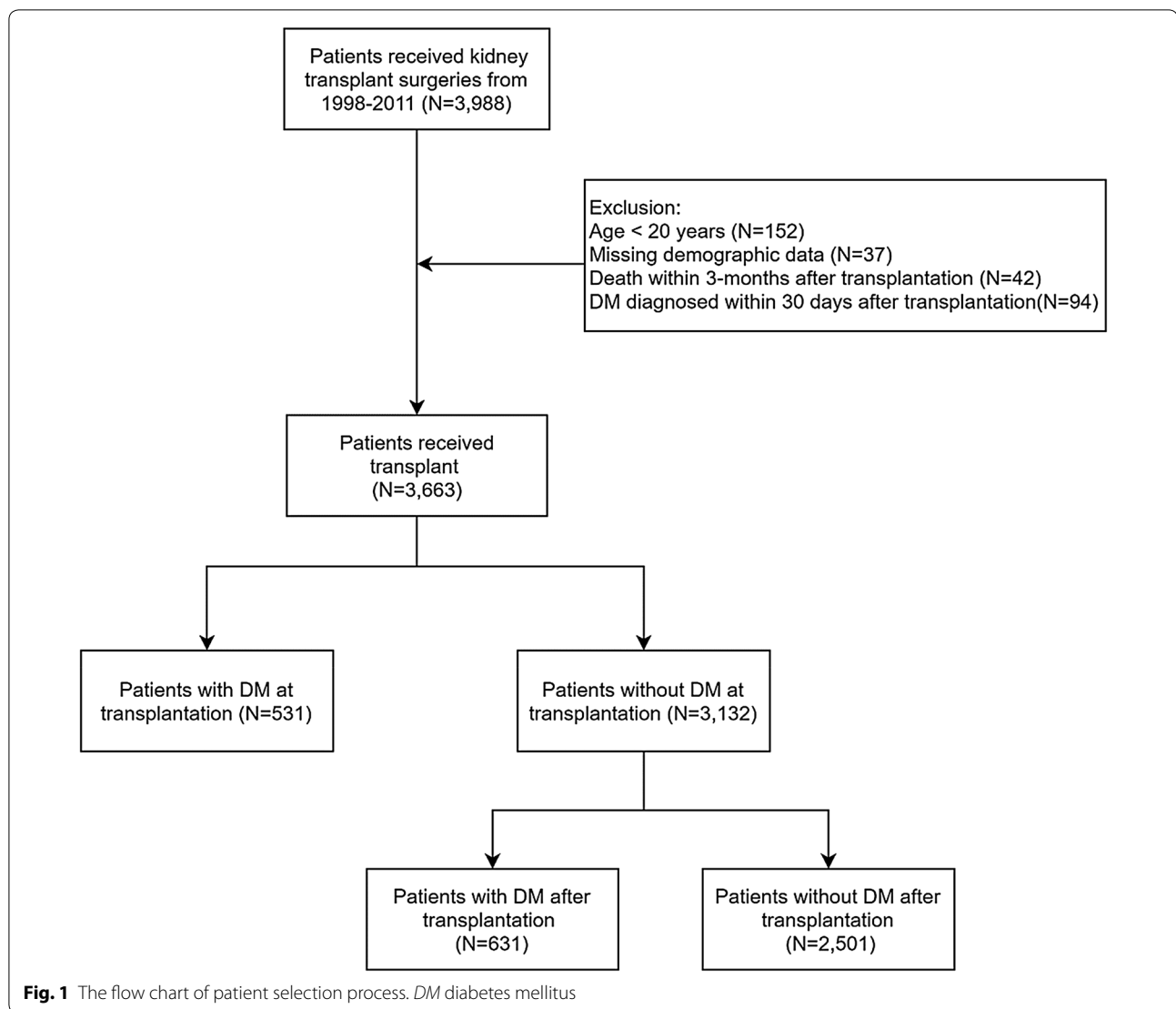
impacts on transplant outcomes including graft failure, MACE and mortality in Taiwanese population.

Materials and methods

Data source

We conducted a retrospective cohort study with longitudinal data from the NHIRD. The NHI program is a nationwide, compulsory healthcare program covering approximately 99.9% of Taiwan's population, which stood at approximately 23.37 million people in 2014. Before 2000, diagnoses in claims data were coded with A codes, followed by International Classification of Diseases, Ninth Revision, Clinical Modification (ICD-9-CM) codes thereafter. The NHIRD involves comprehensive healthcare information on insured patients, comprising disease diagnoses, inpatient orders, outpatient visits, drug prescriptions, and registries of beneficiaries with specific conditions, but it does not include laboratory data. The requirement to obtain informed consent was waived because data in the NHIRD that could identify specific patients are scrambled and encrypted before being released to researchers. However, consistent data encryption makes linking and continuously following all claims belonging to the same patient within the NHIRD feasible. The study protocol was approved by the Institutional Review Board, Chang Gung Medical Foundation, Taiwan (IRB No: 201900806B0).

In the NHI program, patients with specific chronic conditions, including organ transplantation, ESRD, malignancies, were qualified for a catastrophic illness certificate. To qualify for a certificate, a patient's condition must be repeatedly verified by a peer review group based on clinical evidence, pathologic findings, and laboratory data. The Registry for Catastrophic Illness Patient Database (RCIPD) is an NHIRD subset composed of certificated patients' data, including those receiving kidney transplantation or maintenance dialysis.



Patient selection and study design

Figure 1 demonstrates the process used for selecting the participants in the study cohorts, and Additional file 1: Figure S1 shows our study design. Patients who received kidney transplantation (ICD-9-CMcode = V420, 996.81; surgical code = 76020A, 76020B, 97416K, 97417A, 97418B) from January 1, 1998 to December 31, 2011 were identified from the Taiwan NHIRD. Index date was defined as the date of kidney transplantation. The diagnosis of diabetes mellitus (DM) was defined by at least two outpatient claims or one inpatient claim with ICD-9-CM code = 250 and use of at least one of the oral anti-diabetic agents including metformin, sulfonylurea, glinides, thiazolidinediones (TZD), acarbose, dipeptidyl peptidase-4 inhibitors (DPP4-inhibitors) or insulin. We excluded patients with age < 20 years (N = 156), or

missing demographic data (N = 37). Because surgical complications or infections related to high dose immunosuppressants caused some patients deaths within several months after transplantation, patients who died within 3 months after transplantation were excluded (N = 42). Patients newly diagnosed with DM within 30 days after transplantation were also excluded to improve the diagnostic accuracy and to eliminate the transient hyperglycemia induced by high-dose glucocorticoids and surgical stress (N = 94). Finally, 3663 patients received kidney transplant were enrolled in the study cohort. Among 3663 patients, 531 (14%) patients were diagnosed with DM before transplant and 631 (17%) patients were diagnosed with PTDM.

Covariates and study outcomes

Diseases were detected using A codes before 2000 or ICD-9-CM diagnostic codes after 2000. The covariates were age, sex, place of residence, income levels, occupations, comorbidities, Charlson comorbidity index (CCI), medications, rejection, cytomegalovirus (CMV) infection and initial dialysis type.

Comorbidities were identified when reported for more than two outpatient visits or one inpatient stay within the previous year of index date. Comorbidities included malignancy, hypertension, hyperlipidemia, cerebrovascular accident (CVA), myocardial infarction (MI), CHF, atrial fibrillation (AF), peripheral artery disease, chronic obstructive pulmonary disease (COPD), liver cirrhosis, hepatitis B (HBV) infection and hepatitis C (HCV) infection. Most diagnostic codes used for these comorbidities had been validated in previous NHIRD-based studies [10, 11]. Medications were recognized by the filling of a prescription at least twice or refilling a prescription for a chronic illness at least once after the index date. Medications included steroid, cyclosporin, tacrolimus, mycophenolate mofetil or mammalian target of rapamycin inhibitor (m-TOR inhibitor) like everolimus or sirolimus. Some peritoneal dialysis patients temporarily underwent hemodialysis at the initiation of dialysis; therefore, dialysis modality was defined as the modality at day 90 after the first dialysis session.

The outcomes of primary interest were all-cause mortality, death with functioning graft, the occurrence of graft failure excluding death with functioning graft, and MACE including MI, CHF and CVA. Graft failure was defined as returning to hemodialysis or peritoneal dialysis after kidney transplant for more than 90 days. Components of MACE was detected based on the principal diagnosis of an emergency visit or hospitalization. Mortality was defined as withdrawal from the NHI program. Given that the association between DM status and mortality may be modified by events that occur after graft loss, death with functioning graft was also included as a primary endpoint, defined as the mortality group with elimination of those who had been on maintenance hemodialysis continuously for more than 3 months before death. The secondary outcomes were cardiovascular diseases-related, infection-related and cancer-related death. These outcomes were detected based on the principal or secondary diagnosis of an emergency department visit or hospitalization. Components of cardiovascular diseases were detected based on the principal diagnosis of any emergency visit or hospitalization, most of these diagnostic codes for which have been previously validated [12, 13]. All participants were followed from the index date until the first occurrence of graft

failure, MACE, death, or the end of the follow-up period (December 31, 2013), whichever came first.

Statistical analysis

The descriptive statistics of demographic and clinical information at the date of transplantation were stratified by non-DM, PTDM and DM groups. The difference between groups was estimated by Chi square test for categorical variables and one-way analysis of variance (ANOVA) for continuous variables. The temporal trends of incidence rates of DM prior to and after kidney transplantation were calculated by each year. The Cox proportional hazards model was used to estimate the risk of incident DM after transplantation using demographic and clinical variables in the patients without history of DM while adjusting for the covariates. Since some studies revealed that the major impact of diabetes status on graft survival was not due to rejection but to death instead [14], it is crucial to highlight the interested graft outcome in this study was the graft survival unaffected by death of the individuals, i.e., graft failure excluding death with functioning graft. As a result, we performed competing risk analysis using sub-distributional hazards model to estimate the outcome of graft failure excluding death with functioning graft. Similarly, for the outcome of MACE, we performed competing risk analysis with those who deceased without experiencing MACE events censored in an informative manner.

The incident DM status after transplantation was time-dependent rather than a fixed categorical variable, which violated the assumption of Cox proportional model. Therefore, the Simon and Makuch method and Mantel-Byar test, rather than the traditional Kaplan-Meier method and log-rank test, were used to draw survival curves for the non-DM, PTDM and DM groups. To clarify the association between the occurrence of PTDM and outcomes, we stratified the risks of primary interests by era. Risks of graft failure excluding death with functioning graft, MACE and overall mortality in 0–3 years and >3 years after transplantation were calculated. From the time-dependent Cox model with consideration of the competing risk of death and inverse probability of treatment weighting (IPW) using the propensity score, the adjusted hazard ratios (aHRs) with 95% confidence intervals (CIs) were calculated for the associations between DM groups and interested outcomes. The propensity scores used for IPW were estimated with generalized boosted regression models and considered the demographics, CCI, comorbidities prior and after transplantation, plus medications [15]. The subgroup analysis of Cox models was conducted for each stratified groups of age, sex, CCI and significant comorbidities. All statistical analyses were performed using R language and SAS 9.4

Table 1 Demographical characteristic in patients with kidney transplantation by diabetes status

Characteristics	DM status			p-value
	DM	PTDM	Non-DM	
No. of patients	531	631	2501	
Male, N (%)	379 (71.4)	339 (53.7)	1195 (47.8)	< 0.001
Age years, mean \pm SD	52.19 \pm 9.50	50.62 \pm 10.12	43.15 \pm 10.94	< 0.001
Observation years, mean \pm SD	6.21 \pm 3.37	5.19 \pm 3.60	7.77 \pm 3.90	< 0.001
CCI scores ^a , N (%)				
Mean \pm SD	0.81 \pm 1.00	0.83 \pm 1.41	0.54 \pm 0.87	< 0.001
0	261 (49.2)	341 (54.0)	1559 (62.3)	< 0.001
1	154 (29.0)	171 (27.1)	670 (26.8)	
2+	116 (21.9)	119 (18.9)	272 (10.9)	
Place of residence, N (%)				
Urban	340 (64.0)	380 (60.2)	1671 (66.8)	0.032
Suburban	156 (29.4)	210 (33.3)	680 (27.2)	
Rural	35 (6.6)	41 (6.5)	150 (6.0)	
Income levels, N (%)				
Quintile 1	99 (18.6)	126 (20.0)	439 (17.6)	< 0.001
Quintile 2	95 (17.9)	187 (29.6)	685 (27.4)	
Quintile 3	99 (18.6)	61 (9.7)	396 (15.8)	
Quintile 4	102 (19.2)	127 (20.1)	505 (20.2)	
Quintile 5	136 (25.6)	130 (20.6)	476 (19.0)	
Occupation ^a , N (%)				
1	89 (16.8)	83 (13.2)	401 (16.0)	0.073
2	28 (5.3)	36 (5.7)	145 (5.8)	
3	140 (26.4)	208 (33.0)	814 (32.6)	
4	213 (40.1)	249 (39.5)	917 (36.7)	
5	61 (11.5)	55 (8.7)	224 (9.0)	
Comorbidities, N (%)				
Malignancy	15 (2.8)	59 (9.4)	67 (2.7)	< 0.001
Hypertension	379 (71.4)	371 (58.8)	1290 (51.6)	< 0.001
Hyperlipidemia	211 (39.7)	164 (26.0)	387 (15.5)	< 0.001
Stroke	54 (10.2)	25 (4.0)	75 (3.0)	< 0.001
Myocardial infarction	11 (2.1)	4 (0.6)	8 (0.3)	< 0.001
Congestive heart failure	105 (19.8)	60 (9.5)	250 (10.0)	< 0.001
Peripheral vascular disease	41 (7.7)	31 (4.9)	81 (3.2)	< 0.001
Atrial fibrillation	11 (2.1)	6 (1.0)	15 (0.6)	0.004
COPD	33 (6.2)	52 (8.2)	125 (5.0)	0.007
Liver cirrhosis	14 (2.6)	30 (4.8)	42 (1.7)	< 0.001
HBV	4 (0.8)	3 (0.5)	6 (0.2)	0.167
HCV	22 (4.1)	6 (1.0)	4 (0.2)	< 0.001
Medication, N (%)				
Cyclosporin	261 (49.2)	185 (29.3)	1111 (44.4)	< 0.001
Tacrolimus	378 (71.2)	436 (69.1)	1921 (76.8)	< 0.001
Mycophenolate	366 (68.9)	385 (61.0)	1766 (70.6)	< 0.001
m-TOR inhibitor	230 (43.3)	296 (46.9)	1265 (50.6)	0.005
Steroid				
Non-use	4 (0.8)	79 (12.5)	4 (0.2)	< 0.001
\leq 10 mg/day	408 (76.8)	426 (67.5)	2115 (84.6)	
$>$ 10 mg/day	119 (22.4)	126 (20.0)	382 (15.3)	

Table 1 (continued)

Characteristics	DM status			p-value
	DM	PTDM	Non-DM	
Comorbidities after transplantation, N (%)				
Rejection	317 (59.7)	294 (46.6)	1345 (53.8)	<0.001
CMV infection	55 (10.4)	37 (5.9)	212 (8.5)	0.019
Initial dialysis type, N (%)				
Hemodialysis	423 (79.7)	481 (76.2)	1656 (66.2)	<0.001
Peritoneal dialysis	24 (4.5)	39 (6.2)	212 (8.5)	
Both	77 (14.5)	104 (16.5)	606 (24.2)	

No. or N number, DM diabetic mellitus, PTDM post-transplantation diabetic mellitus, SD standard deviation, CCI Charlson comorbidity index, COPD chronic obstructive pulmonary disease, HBV hepatitis B virus, HCV hepatitis C virus, m-TOR mammalian target of rapamycin, CMV cytomegalovirus, CCI Charlson comorbidity index, except diabetic mellitus and renal disease)

^a Occupation categories: 1. dependents; 2. civil servants, teachers, military personnel and veterans; 3. non-manual workers and professionals; 4. manual workers and 5. other

software (SAS Institute Inc., Cary, NC, USA). A statistical significance was considered for two-sided p-value <0.05 for all tests.

Results

Subject characteristics

Table 1 presents the baseline characteristics of the DM group when compared with the PTDM group and non-DM group. Overall, a total of 3663 kidney transplant patients met the inclusion criteria and were categorized

by their DM status into the DM (N=531), PTDM (N=631), or non-DM (N=2501) groups. Type 1 DM only existed in the pre-existing DM group, with 33 out of 531 recipients. The mean age (years) was 52.19±9.5 in the DM group, 50.62±10.2 in the PTDM group and 43.15±10.94 in the non-DM group, respectively (p<0.001). In general, the DM group was the oldest, had the highest proportion of cardiovascular comorbidities including hypertension, hyperlipidemia, MI, CVA, peripheral artery disease, and carried the highest CCI,

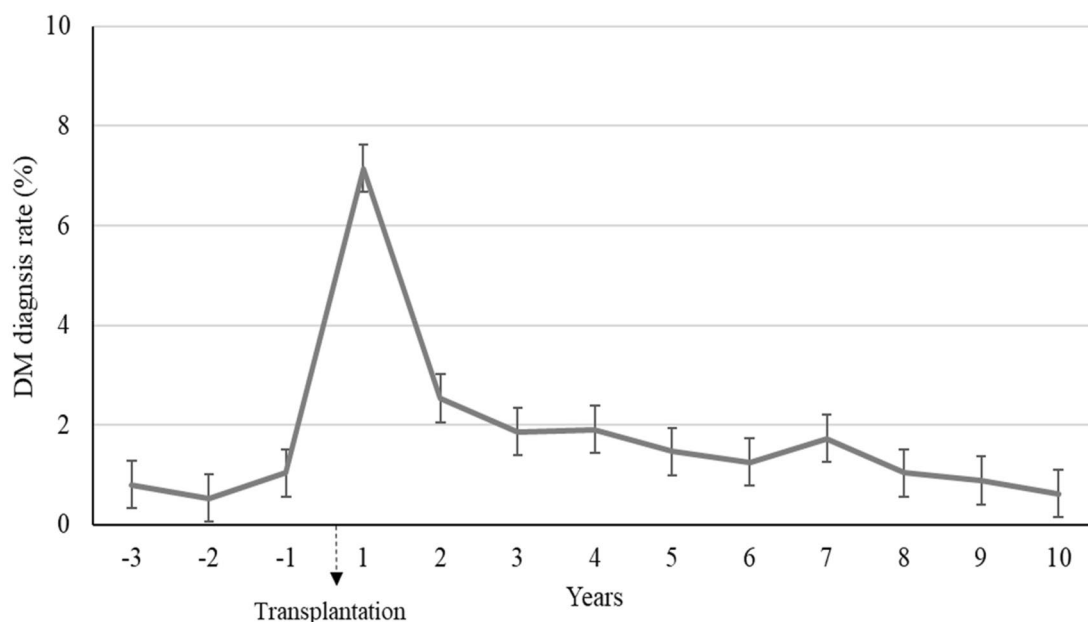


Fig. 2 Temporal trends of DM rates prior and after transplantation. DM diabetes mellitus, PTDM post-transplant diabetes mellitus, IQR, interquartile range. *The cumulative incidences of DM after transplantation (or PTDM) were 7.2% for 1-year, 11.5% for 3-year, 15% years for 5-year, and 23.4% for 10-year. The median (IQR) capture time of PTDM development was 2.4 (0.4–5.8) years

Table 2 Risk of graft failure, MACE, all-cause mortality, and death with functioning graft in kidney transplant recipients stratified by diabetes status

DM Status ^a	Graft failure		MACE		All-cause mortality		Death with functioning graft	
	Cox model	Cox model and competing risk	Cox model	Cox model and competing risk	Cox model	Cox model and competing risk	Cox model	Cox model
	HR (95% CI)	P	HR (95% CI)	P	HR (95% CI)	P	HR (95% CI)	P
Non-DM	(Reference)		(Reference)		(Reference)		(Reference)	
PTDM	1.75 (1.56–1.96)	<0.001	1.65 (1.47–1.85)	<0.001	1.59 (1.38–1.84)	<0.001	1.79 (1.59–2.01)	<0.001
DM	1.40 (1.24–1.57)	<0.001	1.33 (1.18–1.50)	<0.001	1.74 (1.50–2.02)	<0.001	2.03 (1.81–2.28)	<0.001

MACE major adverse cardiovascular event, HR hazard ratio, CI confidence interval, DM diabetes mellitus, PTDM post-transplant diabetes mellitus

^a All HRs (95% CI) were calculated by using Cox proportional hazards model with counting process accounted for time-dependent variables and weighted by the propensity scores. Propensity scores for the three groups stratified by DM status were calculated from variables of gender, age, Charlson comorbidity scores, place of residence, income levels, occupations, presence of comorbidities (including malignancy, hypertension, hyperlipidemia, cerebrovascular disease, myocardial infarction, congestive heart failure, peripheral vascular disease, atrial fibrillation, chronic obstructive pulmonary disease, cirrhosis, hepatitis B virus, hepatitis C virus), cyclosporin, tacrolimus, mycophenolate mofetil, mammalian target of rapamycin inhibitor, steroid, kidney transplantation rejection and cytomegalovirus infection. Competing risk of death with functioning graft was calculated as informative death-censoring mechanism for evaluating the outcome model of graft failure excluding death with functioning graft. Competing risk of death without experiencing MACE was calculated as informative death-censoring mechanism for evaluating the outcome model of MACE

followed by the PTDM group, and then the non-DM group.

Temporal trends of incident DM rates in patients before and after kidney transplantation

Figure 2 shows the temporal trends of incidence of DM in patients before and after kidney transplantation. Before kidney transplantation, the incidence of DM was around 1% per year. The incidence of DM was the highest in the first year after kidney transplantation, reaching 7.2%. The median time to the development of PTDM was 2.4 (0.4–5.8) years. Overall, the incidence of DM was higher in the post-transplantation period than in the pre-transplantation period. The cumulative incidences of DM after transplantation were 7.2% for 1-year, 11.5% for three-year, 15% years for 5-year, and 23.4% for 10-year.

Risk factors of PTDM among 3132 patients without DM prior to transplantation

The risk factors of PTDM among 3132 patients without DM prior to transplantation were shown in Additional file 1: Table S1. The Cox proportional hazards model with competing risk analysis revealed advanced age (aHR=1.03; 1.03–1.04; $p<0.001$) and male sex (aHR=1.20; 1.03–1.43; $p=0.02$) were associated with increased risk of PTDM. Hyperlipidemia (aHR=1.43; 1.15–1.75; $p<0.001$) and malignancy (aHR=1.65; 1–2.72; $p=0.048$) predisposed patients to higher risks of PTDM.

Risk of graft failure, MACE, and all-cause mortality for non-DM, PTDM and DM groups

Table 2 presents the risk of graft failure, MACE, all-Cause mortality and death with functioning graft in three targeted groups (non-DM, PTDM, DM). IPW-standardized time-dependent Cox proportional hazards model with competing risk analysis was used to calculate the HR and 95% CIs between three targeted groups. Regarding graft failure excluding death with functioning graft, the PTDM group and the DM group exhibited higher risks compared with the non-DM group (PTDM: HR 1.65, 95% CI 1.47–1.85; DM: HR 1.33, 95% CI 1.18–1.50). Regarding MACE, the PTDM group and the DM group had higher risks compared with the non-DM group (PTDM: HR 1.51, 95% CI 1.31–1.74; DM: HR 1.64, 95% CI 1.41–1.90). Regarding all-cause mortality, the PTDM group and the DM group had higher risks compared with the non-DM group (PTDM:HR 1.79, 95% CI 1.59–2.01; DM: HR 2.03, 95% CI 1.81–2.18). Regarding death with functioning graft, the PTDM group and the DM group demonstrated higher risks compared with the non-DM group (PTDM:

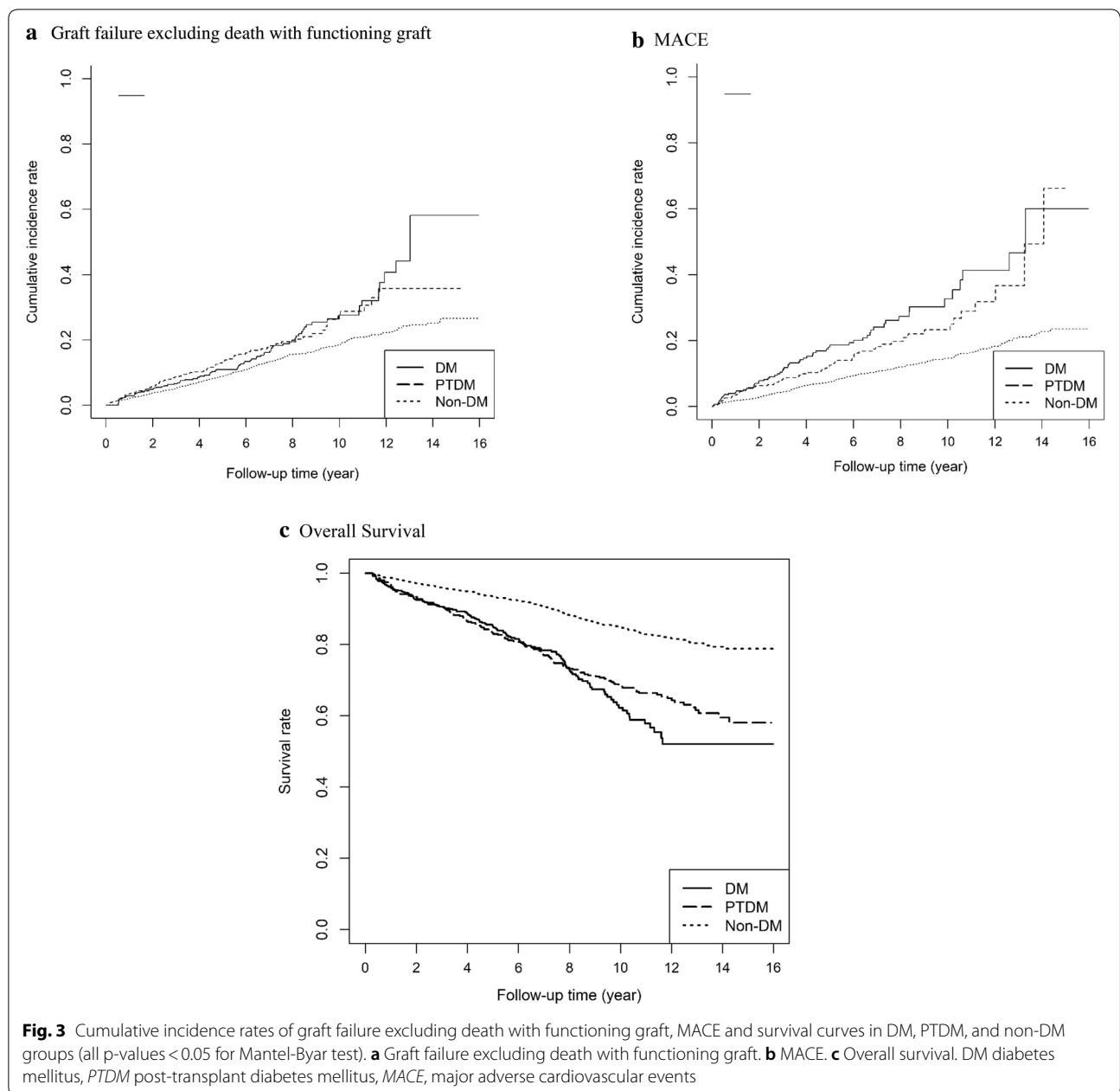
HR 1.94, 95% CI 1.71–2.20; DM: HR 1.94, 95% CI 1.71–2.21). The cumulative survival curves for graft survival, MACE and all-cause mortality using the Simon-Makuch method are shown in Fig. 3. Risks of graft failure excluding death with functioning graft, MACE, and all-cause mortality in the targeted groups stratified by time period after transplantation were shown in the Additional file 1: Table S2.

Mortality risks from cardiovascular diseases, cancer and infection for non-DM, PTDM and DM groups

Table 3 shows HRs for cardiovascular disease, cancer and infection-related death for the three targeted groups. Compared with non-DM group, both PTDM and DM groups had increased cardiovascular disease-related mortality (PTDM: HR 2.14, 95% CI 1.43–3.20, $p<0.001$; DM: HR 1.89, 95% CI 1.25–2.86, $p=0.002$), cancer-related mortality (PTDM: HR 1.56, 95% CI 1.18–2.07, $p=0.002$; DM: HR 1.89, 95% CI 1.25–2.86, $p=0.027$), and infection-related mortality (PTDM: HR 1.47, 95% CI 1.14–1.90, $p=0.003$; DM: HR 2.25, 95% CI 1.77–2.84, $p<0.001$).

Subgroup analysis

To further verify whether the effect of PTDM was consistent among different clinical situations, we performed pre-specified subgroup analyses for graft failure excluding death with functioning graft, MACE and all-cause mortality, as shown in Table 4. The rates of graft failure excluding death with functioning graft were higher in recipients with PTDM compared with non-DM group, especially for those aged younger than 55 years, those with low CCI (=0) and those without comorbidities including AF, liver cirrhosis, CHF, and MI. The rates of MACE were higher in recipients with PTDM compared with non-DM group, particularly for those aged younger than 55 years, those with low CCI (≤ 1), and those without comorbidities including AF, liver cirrhosis, CHF, MI. The rates of all-cause mortality were higher in recipients with PTDM compared with non-DM group, specifically for those without comorbidities including AF, liver cirrhosis, CHF, and MI, but were consistently higher than non-DM group independent of age or CCI. To confirm the modification effect of age on the association between PTDM and outcomes of interest, we examined the interaction effect of age on the association between PTDM and outcomes of interest, we examined the interaction between PTDM status and age. The p -values for interaction ($p_{\text{interaction}}$) between PTDM status and age were 0.463 for graft failure excluding death with functioning graft, 0.01 for MACE, and 0.06 for all-cause mortality.



Discussion

In the present study, we conducted a retrospective cohort analysis with longitudinal data from the NHIRD. The key findings of the present study were as follows: (i) PTDM incidence peaked in the first year post-transplant; (ii) the presence of DM (pre-existing or incident) was associated with higher risks of all-cause mortality, MACE and graft failure excluding death with functioning graft; (iii) the adverse effects of PTDM on MACE and patient survival were observed exclusively in those who were relatively young and with less comorbidities.

PTDM, also known as new-onset diabetes after transplantation (NODAT), is a common complication of kidney transplantation. Due to the lack of standards regarding the definition of diagnosis, it was once difficult to estimate the incidence rate of PTDM precisely. A review of literature reported the incidence of PTDM ranged widely between 10 and 74% [16]. In 2003, the first international consensus guidelines for NODAT were published [17] based on American Diabetes Association (ADA) and World Health Organization (WHO) criteria for DM. The guidelines were later revised in 2014 with the addition of hemoglobin A1C as a criterion [18].

Table 3 Hazard ratios for cancer, cardiovascular diseases, and infection-related death in kidney transplant recipients stratified by diabetes status

	Non-DM	PTDM	DM
Total no. of patients	2501	631	531
No. of death	336	123	134
Cancer-related death ^a			
N (%)	63 (2.5%)	25 (4.0%)	14 (2.6%)
HR (95% CI)	(REF)	1.56 (1.18–2.07)	1.39 (1.04–1.85)
p-value		0.002	0.027
CVD-related death ^a			
N (%)	25 (1.0%)	10 (1.6%)	10 (1.9%)
HR (95% CI)	(REF)	2.14 (1.43–3.20)	1.89 (1.25–2.86)
p-value		< 0.001	0.002
Infection-related death ^a			
N (%)	74 (3.0%)	28 (4.4%)	39 (7.3%)
HR (95% CI)	(REF)	1.47 (1.14–1.90)	2.25 (1.77–2.84)
p-value		0.003	< 0.001

No. or N number, HR hazard ratio, CI confidence interval, DM diabetes mellitus, PTDM post-transplant diabetes mellitus, CVD cardiovascular disease

^a All HRs (95% CI) were calculated using Cox proportional hazards model with counting process accounted for time-dependent variables and weighted by the propensity scores

A large cohort from United Network for Organ Sharing/Organ Procurement and Transplantation Network (UNOS/OPTN) database found the cumulative incidence of NODAT was 9.7% 1 year after transplantation by using the consensus in 2003 as disease definition [14]. However, more recent studies showed the incidence of NODAT could be much higher with the application of revised guideline in 2014. The incidence reported in our study was more in accordance with the study from UNOS/OPTN database but lower than some recent studies. Such difference can be explained in part by the fact that some of the patients analyzed in our study were transplanted and diagnosed with DM in the era before the international consensus guidelines issued in 2003. Besides, the diagnosis of DM was defined in a relatively strict way in the present study. The incidence of PTDM in our study peaked in the first year post-transplant, and this trend was consistent with the results of an earlier study [14]. In addition, the incidence declined to 2% from the second to seventh year after transplantation but was still higher than pre-transplant status (1%). The possible explanations of higher DM occurrence include the use of immunosuppressive agents as well as the insulin resistance caused by inflammation and infection after transplantation [16, 19]. Our finding emphasizes the importance of DM screening and measures to prevent its occurrence in this period.

Since pre-transplant DM has been associated with inferior transplant outcomes [20], there is concern that PTDM may also affect outcomes after transplantation. Boudreaux et al. in 1987 was one of the first to suggest that PTDM impacts patient survival [21]. From then on, there has been a considerable amount of literature regarding the issue. PTDM was associated with worse patient survival independent of other clinical factors [6, 22–25]. In our study, patients with PTDM had higher risks of MACE and all-cause mortality. The increased mortality rate could be attributed to cardiovascular diseases, which was in good agreement with previous findings in the literature [25, 26]. In a retrospective study analyzing a large cohort (N = 1146) of first-time kidney transplant recipients followed up for 24 years, PTDM was found to be a strong independent risk factor for death, mainly from cardiovascular causes, regardless of the presence of cardiovascular diseases diagnosed before transplantation [25]. In addition to cardiovascular disease, our study revealed that the increased mortality risk in PTDM group, compared with non-DM group, was also ascribed to excess risk of infection-related death. This is not surprising since both DM and PTDM have been shown to be associated with greater risk of sepsis and sepsis-related mortality [27, 28]. Finally, our study exclusively showed that PTDM group had excess risk of cancer-related death compared with non-DM group. However, previous studies did not support this finding [27, 29]. Although DM has been widely known to increase the risk of malignancy with the postulated mechanisms including stimulation of insulin-like growth factor (IGF)-axis and increased cytokines production [30], whether this can be extrapolated to the case of PTDM remains to be elucidated.

With respect to the negative influence of PTDM on graft function, our study showed that the PTDM group exhibited a significantly higher risk of graft failure excluding death with functioning graft compared with the non-DM group even after competing risk analysis serving as death-censoring investigation. The study published by Miles et al. showed PTDM was associated with impaired long-term renal allograft function and survival, though it did not provide the information about death-censoring analysis [31]. Another research correlated favorably with our study, indicating PTDM as an independent risk factor for death-censored renal graft failure [6]. Nevertheless, a former study showed that PTDM was related to overall graft failure but not to death-censored graft failure, which was mainly attributed to acute rejection during the first year [14]. This discrepancy might be owing to not only the definition of PTDM but also the ways of detection of graft failure.

To verify whether the deleterious effects of PTDM on patient and graft survival were consistent among

Table 4 Subgroup analyses for the risk of interested outcomes

Category ^a	Subgroup	Outcome	Graft failure excluding death with functioning graft						MACE						All-cause mortality											
			DM		PTDM		P	DM		PTDM		P	DM		PTDM		P	DM		PTDM		P				
			HR (95% CI)	P	HR (95% CI)	P		HR (95% CI)	P	HR (95% CI)	P		HR (95% CI)	P	HR (95% CI)	P		HR (95% CI)	P	HR (95% CI)	P					
Age	< 55	1.78 (1.57–2.00)	< 0.001	1.38 (1.21–1.56)	< 0.001	1.64 (1.40–1.92)	< 0.001	1.63 (1.37–1.94)	< 0.001	1.76 (1.52–2.03)	< 0.001	2.12 (1.83–2.44)	< 0.001	>= 55	1.00 (0.71–1.40)	0.998	1.29 (0.95–1.75)	0.109	1.05 (0.78–1.41)	0.757	1.42 (1.06–1.89)	0.019	1.80 (1.47–2.19)	< 0.001	1.62 (1.33–1.97)	< 0.001
Gender	Female	1.56 (1.32–1.85)	< 0.001	1.17 (0.98–1.40)	0.089	1.61 (1.31–1.97)	< 0.001	1.69 (1.35–2.11)	< 0.001	2.05 (1.71–2.46)	< 0.001	2.45 (2.05–2.93)	< 0.001	Male	1.69 (1.45–1.98)	< 0.001	1.44 (1.23–1.69)	< 0.001	1.40 (1.16–1.70)	0.001	1.53 (1.25–1.87)	< 0.001	1.62 (1.39–1.89)	< 0.001	1.75 (1.50–2.03)	< 0.001
	CCI	1.94 (1.68–2.26)	< 0.001	1.11 (0.94–1.31)	0.232	1.45 (1.22–1.74)	< 0.001	1.75 (1.46–2.10)	< 0.001	1.43 (1.21–1.69)	< 0.001	2.31 (1.98–2.70)	< 0.001	1	1.25 (1.00–1.55)	0.048	1.60 (1.30–1.96)	< 0.001	1.67 (1.29–2.17)	< 0.001	1.34 (1.00–1.81)	0.054	2.28 (1.84–2.81)	< 0.001	1.61 (1.29–2.02)	< 0.001
AF	2+	1.30 (0.93–1.83)	0.131	1.65 (1.21–2.26)	0.002	1.22 (0.74–2.01)	0.433	1.57 (0.93–2.63)	0.091	2.07 (1.58–2.71)	< 0.001	1.84 (1.41–2.40)	< 0.001	No	1.64 (1.46–1.84)	< 0.001	1.31 (1.17–1.48)	< 0.001	1.54 (1.33–1.77)	< 0.001	1.64 (1.41–1.91)	< 0.001	1.81 (1.61–2.04)	< 0.001	2.05 (1.82–2.30)	< 0.001
	Liver cirrhosis	0.98 (0.51–1.89)	0.956	N/A	N/A	N/A	N/A	0.93 (0.36–2.42)	0.882	1.33 (0.43–4.13)	0.619	0.95 (0.43–2.12)	0.909	Yes	1.65 (1.47–1.86)	< 0.001	1.30 (1.15–1.47)	< 0.001	1.49 (1.30–1.72)	< 0.001	1.67 (1.44–1.95)	< 0.001	1.80 (1.59–2.02)	< 0.001	2.09 (1.86–2.35)	< 0.001
CHF	Yes	1.38 (0.71–2.69)	0.344	2.13 (1.13–4.01)	0.019	1.93 (0.80–4.67)	0.147	0.80 (0.28–2.33)	0.683	1.47 (0.77–2.79)	0.241	0.53 (0.22–1.25)	0.146	No	1.70 (1.50–1.92)	< 0.001	1.25 (1.10–1.43)	0.001	1.51 (1.31–1.74)	< 0.001	1.64 (1.41–1.90)	< 0.001	1.86 (1.64–2.10)	< 0.001	2.12 (1.88–2.40)	< 0.001
	MI	1.25 (0.89–1.76)	0.204	1.72 (1.26–2.34)	0.001	N/A	N/A	N/A	N/A	N/A	N/A	1.45 (1.05–2.00)	0.024	Yes	1.65 (1.47–1.85)	< 0.001	1.29 (1.15–1.46)	< 0.001	1.51 (1.31–1.74)	< 0.001	1.64 (1.41–1.90)	< 0.001	1.80 (1.60–2.03)	< 0.001	2.03 (1.81–2.28)	< 0.001
CVA	Yes	1.37 (0.71–2.66)	0.348	N/A	N/A	N/A	N/A	N/A	N/A	N/A	N/A	2.43 (0.44–13.54)	0.311	No	1.65 (1.47–1.86)	< 0.001	1.30 (1.15–1.47)	< 0.001	1.51 (1.31–1.74)	< 0.001	1.64 (1.41–1.90)	< 0.001	1.74 (1.54–1.96)	< 0.001	2.03 (1.80–2.28)	< 0.001
	Yes	0.84 (0.33–2.17)	0.720	2.49 (1.32–4.68)	0.005	N/A	N/A	N/A	N/A	N/A	N/A	1.96 (1.18–3.26)	0.009													

MACE major adverse cardiovascular events, DM diabetes mellitus, PTDM, post-transplant diabetes mellitus HR hazard ratio, CI confidence interval, CCI Charlson comorbidity index with exception of diabetes mellitus and renal disease, AF atrial fibrillation, CHF congestive heart failure, MI myocardial infarction, CVA cerebrovascular accident

^a All HRs (95% CI) were measured and compared to the non-DM group using Cox proportional hazards model with counting process accounted for time-dependent variables and weighted by the propensity scores

patients with different underlying clinical conditions, we performed subgroup analyses for graft failure excluding death with functioning graft, MACE and all-cause mortality. In patients under the age of 55 years, PTDM correlated with a significantly higher risk of MACE and a trend of higher mortality risk, while in those over the age of 55 years with PTDM had shown neither difference in MACE nor death. Our results shared similarities with some earlier studies: A retrospective study in the United Kingdom revealed that patient survival was adversely affected by both pre-existing diabetes and by PTDM, particularly in those with an age less than 55 years. However, the cause of death was not identified in the study [22]. Similarly, a population cohort study of kidney transplant recipients recruited in Australia and New Zealand Dialysis and Transplant Registry found that HRs for all-cause mortality and death with functioning graft in recipients carrying DM were significantly higher than non-DM group. The highest risk was shown in recipients with DM aged younger than 40 years especially. Risk was increased to a lesser extent in recipients with DM older than 55 years old [27]. Although this study did not differentiate the pre-existing DM and PTDM, it provided some evidence that the magnitude of the excess risk associated with DM status was more pronounced in young group. Consequently, we can infer from the studies listed above that there is probably some “age-group-specific” phenomenon for deleterious effects of PTDM regarding patient survival or life-threatening complications. Interestingly, our study also discovered that PTDM was universally associated with higher risks of death, graft failure excluding death with functioning graft and MACE in patients without AF, cirrhosis, CHF, MI, and CVA. However, PTDM did not further increase the risks in patients with the listed comorbidities, except for the CVA subgroup, in which PTDM consistently attributed to a higher risk of death irrelevant to the existence of CVA. Taken together, our findings suggested that those with longer life expectancy and better baseline physical condition are more susceptible to the negative impacts of PTDM.

Concerning the detrimental effect of PTDM on patient survival and possibly graft survival, there have been plenty of studies evaluating the potential measures to prevent PTDM, including lifestyle modification [32–34], steroid avoidance [35–38] or calcineurin-inhibitor-sparing regimen [39, 40]. Moreover, there are ongoing clinical trials assessing the efficacy of early management of hyperglycemia with basal insulin (NCT01683331) and sitagliptin (NCT01928199) for the prevention of PTDM. A double-blinded randomized controlled trial is currently conducted to value the effect of vitamin D3 (cholecalciferol) supplementation on the incidence of PTDM

(NCT01431430), and the results are still pending. With emerging groups working on the issue and a great hope for better strategies to prevent PTDM, clinicians might also need to take the rising healthcare cost into account. Our subgroup analysis revealed that young people and those with less comorbidities tended to be more affected by PTDM. Although the reason of such trend is still uncertain, our findings may help better define the candidates who are prone to benefit from a more stringent post-transplant glycemic control and even the preventive treatment of PTDM.

Admittedly, our research had some limitations. First, our study was subject to flaws inherent in retrospective analysis, such as the reporting bias and erroneous data. Second, because NHIRD does not provide information about all patient characteristics related to our primary interest, certain well-established risk factors including donor factors and human leukocyte antigen (HLA) matching were inevitably veiled. Third, because NHIRD does not include laboratory data, our study was limited by lack of information needed to completely meet the diagnostic criteria of the consensus guidelines. The alternative solution was to filter all the diagnoses made and recorded by clinicians and to examine whether they matched the logic behind the consensus recommendations. In the present study, the diagnosis of DM was established by documented ICD diagnostic codes and use of anti-diabetic agents so as to match the follow-up nature of guideline diagnosis. Although there was risk that we might have excluded some patients presenting with only mild hyperglycemia after transplantation, the rationale behind the way we defined PTDM can be justified by one study showing that being diagnosed with PTDM may be of unique prognostic value rather than just having hyperglycemia [41]. However, the “heightened threshold” of diagnosis in our study might help ensure the accuracy that all the patients captured were undoubtedly diabetic and be more adaptive to the clinical setting when a new diagnosis of DM is made.

Conclusions

To the best of our knowledge, this study is the first to provide Taiwanese population-based information about the differences in graft and patient survival outcomes among kidney transplant recipients who were stratified by DM status. In a large cohort of patients from the nationwide registry data, we found that the incidence of PTDM peaked within the first year post kidney transplantation. PTDM was associated with worse patient and graft outcomes, with the magnitude of cardiovascular and survival disadvantages from PTDM more pronounced in recipients aged less than 55 years. Although the reasons for these associations have not been disclosed, the results

of our research could be a useful aid for decision makers in establishing a personalized surveillance and treatment programs.

Supplementary information

Supplementary information accompanies this paper at <https://doi.org/10.1186/s13098-020-00541-3>.

Additional file 1. Additional figure and tables.

Acknowledgements

The authors thank all the clinicians and patients enrolled in this study. The authors also appreciate the statistical consultation and acknowledge the support of the Maintenance Project of the Center for Artificial Intelligence in Medicine (Grant CLRPG3H0012, CLRPG3H0012) at Chang Gung Memorial Hospital and Clinical Informatics and Medical Statistics Research Center (Grant CMRPD1H0531) at Chang Gung University for study design and monitoring, data analysis and interpretation.

Authors' contributions

Conceptualization, HY, C-L; methodology, Y-RL; software, J-SC; validation, C-CL, C-LY; investigation, K-HC; writing, HY, C-C; writing, review and editing, P-HL; visualization, Y-CT; supervision, P-HL, C-CH. All authors read and approved the final manuscript.

Availability of data and materials

All data analyzed during this study are included in this article.

Ethics approval and consent to participate

The implementation and publication of this study were approved by the Institutional Review Board, Chang Gung Medical Foundation, Taiwan (IRB No: 201900806B0, approved on June 6, 2019).

Consent for publication

Not applicable.

Competing interests

The authors declare no conflict of interest. The funders had no role in the design of the study; in the collection, analyses, or interpretation of data; in the writing of the manuscript, or in the decision to publish the results.

Author details

¹ Kidney Research Center and Department of Nephrology, Chang Gung Memorial Hospital, Linkou Branch, Taoyuan, Taiwan. ² College of Medicine, Chang Gung University, Taoyuan, Taiwan. ³ Center for Artificial Intelligence in Medicine, Chang Gung Memorial Hospital at Linkou, Taoyuan, Taiwan. ⁴ Division of Endocrinology and Metabolism, Department of Internal Medicine, Linkou Chang Gung Memorial Hospital, Taoyuan, Taiwan. ⁵ Clinical Informatics and Medical Statistics Research Center, College of Medicine, Chang Gung University, Taoyuan, Taiwan. ⁶ Department of Nephrology, New Taipei Municipal TuCheng Hospital, New Taipei, Taiwan.

Received: 26 December 2019 Accepted: 13 April 2020

Published online: 28 April 2020

References

- El Nahas M. The global challenge of chronic kidney disease. *Kidney Int.* 2005;68:2918–29. <https://doi.org/10.1111/j.1523-1755.2005.00774.x>.
- Schoolwerth AC, et al. Chronic kidney disease: a public health problem that needs a public health action plan. *Prev Chronic Dis.* 2006;3:A57.
- Saran R, et al. US renal data system 2018 annual data report: epidemiology of kidney disease in the United States. *Am J Kidney Dis.* 2019;73:A7–8. <https://doi.org/10.1053/j.ajkd.2019.01.001>.
- Tsai HI, Yu HP. A review of nationwide population study of organ transplantation in Taiwan. *Acta Anaesthesiol Taiwan.* 2016;54:70–4. <https://doi.org/10.1016/j.aat.2016.05.003>.
- Cosio FG, Hickson LJ, Griffin MD, Stegall MD, Kudva Y. Patient survival and cardiovascular risk after kidney transplantation: the challenge of diabetes. *Am J Transpl.* 2008;8:593–9. <https://doi.org/10.1111/j.1600-6143.2007.02101.x>.
- Kasiske BL, Snyder JJ, Gilbertson D, Matas AJ. Diabetes mellitus after kidney transplantation in the United States. *Am J Transpl.* 2003;3:178–85. <https://doi.org/10.1034/j.1600-6143.2003.00010.x>.
- Joss N, Staatz CE, Thomson AH, Jardine AG. Predictors of new onset diabetes after renal transplantation. *Clin Transpl.* 2007;21:136–43. <https://doi.org/10.1111/j.1399-0012.2006.00580.x>.
- Chien YS, et al. Incidence and risk factors of new-onset diabetes mellitus after renal transplantation. *Transpl Proc.* 2008;40:2409–11. <https://doi.org/10.1016/j.transproceed.2008.06.034>.
- Chen Y-C, et al. Taiwan's National Health Insurance Research Database: administrative health care database as study object in bibliometrics. 2011;86:365–80. <https://doi.org/10.1007/s11192-010-0289-2>.
- Wu CS, Lai MS, Gau SS, Wang SC, Tsai HJ. Concordance between patient self-reports and claims data on clinical diagnoses, medication use, and health system utilization in Taiwan. *PLoS ONE.* 2014;9:e112257. <https://doi.org/10.1371/journal.pone.0112257>.
- Hsieh CY, Chen CH, Li CY, Lai ML. Validating the diagnosis of acute ischemic stroke in a National Health Insurance claims database. *J Formos Med Assoc.* 2015;114:254–9. <https://doi.org/10.1016/j.jfma.2013.09.009>.
- Cheng CL, Chien HC, Lee CH, Lin SJ, Yang YH. Validity of in-hospital mortality data among patients with acute myocardial infarction or stroke in National Health Insurance Research Database in Taiwan. *Int J Cardiol.* 2015;201:96–101. <https://doi.org/10.1016/j.ijcard.2015.07.075>.
- Kao WH, et al. Validity of cancer diagnosis in the National Health Insurance database compared with the linked National Cancer Registry in Taiwan. *Pharmacoepidemiol Drug Saf.* 2018;27:1060–6. <https://doi.org/10.1002/pds.4267>.
- Kuo HT, Sampaio MS, Vincenti F, Bunnapradist S. Associations of pretransplant diabetes mellitus, new-onset diabetes after transplant, and acute rejection with transplant outcomes: an analysis of the Organ Procurement and Transplant Network/United Network for Organ Sharing (OPTN/UNOS) database. *Am J Kidney Dis.* 2010;56:1127–39. <https://doi.org/10.1053/j.ajkd.2010.06.027>.
- McCaffrey DF, et al. A tutorial on propensity score estimation for multiple treatments using generalized boosted models. *Stat Med.* 2013;32:3388–414. <https://doi.org/10.1002/sim.5753>.
- Shivaswamy V, Boerner B, Larsen J. Post-transplant diabetes mellitus: causes, treatment, and impact on outcomes. *Endocr Rev.* 2016;37:37–61. <https://doi.org/10.1210/er.2015-1084>.
- Davidson, J. et al. New-onset diabetes after transplantation: 2003 International consensus guidelines. In: Proceedings of an international expert panel meeting. Barcelona, Spain, 19 February 2003. *Transplantation.* 2003;75:S53–24. <https://doi.org/10.1097/01.tp.0000069952.49242.3e>.
- Sharif A, et al. Proceedings from an international consensus meeting on post-transplantation diabetes mellitus: recommendations and future directions. *Am J Transpl.* 2014;14:1992–2000. <https://doi.org/10.1111/ajt.12850>.
- Jenssen T, Hartmann A. Post-transplant diabetes mellitus in patients with solid organ transplants. *Nat Rev Endocrinol.* 2019;15:172–88. <https://doi.org/10.1038/s41574-018-0137-7>.
- Nampooray MR, et al. Inferior long-term outcome of renal transplantation in patients with diabetes mellitus. *Med Princ Pract.* 2002;11:29–34. <https://doi.org/10.1159/000048657>.
- Boudreaux JP, et al. The impact of cyclosporine and combination immunosuppression on the incidence of posttransplant diabetes in renal allograft recipients. *Transplantation.* 1987;44:376–81. <https://doi.org/10.1097/00007890-198709000-00010>.
- Revannur VK, et al. Influence of diabetes mellitus on patient and graft survival in recipients of kidney transplantation. *Clin Transpl.* 2001;15:89–94.
- Cosio FG, et al. Patient survival after renal transplantation: IV. Impact of post-transplant diabetes. *Kidney Int.* 2002;62:1440–6. <https://doi.org/10.1111/j.1523-1755.2002.kid582.x>.

24. Porrini E, et al. Impact of metabolic syndrome on graft function and survival after cadaveric renal transplantation. *Am J Kidney Dis.* 2006;48:134–42. <https://doi.org/10.1053/j.ajkd.2006.04.078>.
25. Wauters RP, et al. Cardiovascular consequences of new-onset hyperglycemia after kidney transplantation. *Transplantation.* 2012;94:377–82. <https://doi.org/10.1097/TP.0b013e3182584831>.
26. Cosio FG, et al. New onset hyperglycemia and diabetes are associated with increased cardiovascular risk after kidney transplantation. *Kidney Int.* 2005;67:2415–21. <https://doi.org/10.1111/j.1523-1755.2005.00349.x>.
27. Lim WH, Wong G, Pilmore HL, McDonald SP, Chadban SJ. Long-term outcomes of kidney transplantation in people with type 2 diabetes: a population cohort study. *Lancet Diabetes Endocrinol.* 2017;5:26–33. [https://doi.org/10.1016/S2213-8587\(16\)30317-5](https://doi.org/10.1016/S2213-8587(16)30317-5).
28. Sumrani NB, et al. Diabetes mellitus after renal transplantation in the cyclosporine era—an analysis of risk factors. *Transplantation.* 1991;51:343–7. <https://doi.org/10.1097/00007890-199102000-00014>.
29. Eide IA, et al. Mortality risk in post-transplantation diabetes mellitus based on glucose and HbA1c diagnostic criteria. *Transpl Int.* 2016;29:568–78. <https://doi.org/10.1111/tri.12757>.
30. Pandey A, et al. Diabetes mellitus and the risk of cancer. *Minerva Endocrinol.* 2011;36:187–209.
31. Miles AM, et al. Diabetes mellitus after renal transplantation: as deleterious as non-transplant-associated diabetes? *Transplantation.* 1998;65:380–4. <https://doi.org/10.1097/00007890-199802150-00014>.
32. Chakkeri HA, Weil EJ, Pham PT, Pomeroy J, Knowler WC. Can new-onset diabetes after kidney transplant be prevented? *Diabetes Care.* 2013;36:1406–12. <https://doi.org/10.2337/dc12-2067>.
33. Wissing KM, De Meyer V, Pipeleers L. Balancing immunosuppressive efficacy and prevention of post-transplant diabetes—a question of timing and patient selection. *Kidney Int Rep.* 2018;3:1249–52. <https://doi.org/10.1016/j.ekir.2018.08.013>.
34. Sharif A, Moore R, Baboolal K. Influence of lifestyle modification in renal transplant recipients with postprandial hyperglycemia. *Transplantation.* 2008;85:353–8. <https://doi.org/10.1097/TP.0b013e3181605ebf>.
35. Serrano OK, et al. Rapid discontinuation of prednisone in kidney transplant recipients: 15-year outcomes from the University of Minnesota. *Transplantation.* 2017;101:2590–8. <https://doi.org/10.1097/TP.0000000000001756>.
36. Rizzari MD, et al. Ten-year outcome after rapid discontinuation of prednisone in adult primary kidney transplantation. *Clin J Am Soc Nephrol.* 2012;7:494–503. <https://doi.org/10.2215/CJN.08630811>.
37. Pirsch JD, et al. New-onset diabetes after transplantation: results from a double-blind early corticosteroid withdrawal trial. *Am J Transplant.* 2015;15:1982–90. <https://doi.org/10.1111/ajt.13247>.
38. Hjelmæth J, et al. Tapering off prednisolone and cyclosporin the first year after renal transplantation: the effect on glucose tolerance. *Nephrol Dial Transplant.* 2001;16:829–35. <https://doi.org/10.1093/ndt/16.4.829>.
39. Veroux M, et al. Conversion to sirolimus therapy in kidney transplant recipients with new onset diabetes mellitus after transplantation. *Clin Dev Immunol.* 2013;2013:496974. <https://doi.org/10.1155/2013/496974>.
40. Teutonico A, Schena PF, Di Paolo S. Glucose metabolism in renal transplant recipients: effect of calcineurin inhibitor withdrawal and conversion to sirolimus. *J Am Soc Nephrol.* 2005;16:3128–35. <https://doi.org/10.1681/ASN.2005050487>.
41. Park SC, et al. Effect of transient post-transplantation hyperglycemia on the development of diabetes mellitus and transplantation outcomes in kidney transplant recipients. *Transpl Proc.* 2015;47:666–71. <https://doi.org/10.1016/j.transproceed.2014.11.053>.

Publisher's Note

Springer Nature remains neutral with regard to jurisdictional claims in published maps and institutional affiliations.

Ready to submit your research? Choose BMC and benefit from:

- fast, convenient online submission
- thorough peer review by experienced researchers in your field
- rapid publication on acceptance
- support for research data, including large and complex data types
- gold Open Access which fosters wider collaboration and increased citations
- maximum visibility for your research: over 100M website views per year

At BMC, research is always in progress.

Learn more biomedcentral.com/submissions

