

## Toxin profiles and antimicrobial resistance patterns among toxigenic clinical isolates of *Clostridioides (Clostridium) difficile*

Hamid Heidari<sup>1</sup>, Hadi Sedigh Ebrahim-Saraie<sup>1</sup>, Ali Amanati<sup>2</sup>, Mohammad Motamedifar<sup>1,3</sup>, Nahal Hadi<sup>1,4</sup>, Abdollah Bazargani<sup>1\*</sup>

<sup>1</sup> Department of Bacteriology and Virology, School of Medicine, Shiraz University of Medical Sciences, Shiraz, Iran

<sup>2</sup> Professor Alborzi Clinical Microbiology Research Center, Shiraz University of Medical Sciences, Shiraz, Iran

<sup>3</sup> Shiraz HIV/AIDS Research Center, Institute of Health, Shiraz University of Medical Sciences, Shiraz, Iran

<sup>4</sup> Bioinformatics and Computational Biology Research Center, Shiraz University of Medical Sciences, Shiraz, Iran

### ARTICLE INFO

#### Article type:

Original article

#### Article history:

Received: Sep 30, 2018

Accepted: Feb 13, 2019

#### Keywords:

Antibiotic resistance

CDT

*Clostridioides (Clostridium) - difficile*

*C. difficile* infection

Toxins

### ABSTRACT

**Objective(s):** *Clostridioides (Clostridium) difficile* infection as a healthcare-associated infection can cause life-threatening infectious diarrhea in hospitalized patients. The aim of this study was to investigate the toxin profiles and antimicrobial resistance patterns of *C. difficile* isolates obtained from hospitalized patients in Shiraz, Iran.

**Materials and Methods:** This study was performed on 45 toxigenic *C. difficile* isolates. Determination of toxin profiles was done using polymerase chain reaction method. Antimicrobial susceptibility to vancomycin, metronidazole, clindamycin, tetracycline, moxifloxacin, and chloramphenicol was determined by the agar dilution method. The genes encoding antibiotic resistance were detected by the standard procedures.

**Results:** The most frequent toxin profile was *tcdA+*, *tcdB+*, *cdtA+*, *cdtB+* (82.2%), and only one isolate harboured all toxin associated genes (*tcdA+*, *tcdB+*, *cdtA+*, *cdtB+*) (2.2%). The genes encoding CDT (binary toxin) were also found in six (13.3%) isolates. Resistance to tetracycline, clindamycin and moxifloxacin was observed in 66.7%, 60% and 42.2% of the isolates, respectively. None of the strains showed resistance to other antibiotics. The distribution of the *ermB* gene (the gene encoding resistance to clindamycin) was 57.8% and the *tetM* and *tetW* genes (the genes encoding resistance to tetracycline) were found in 62.2% and 13.3% of the isolates, respectively. The substitutions Thr82 to Ile in GyrA and Asp426 to Asn in GyrB were seen in moxifloxacin resistant isolates.

**Conclusion:** Our data contributes to the present understanding of virulence and resistance traits amongst the isolates. Infection control strategies should be implemented carefully in order to curb the dissemination of *C. difficile* strains in hospital.

#### ► Please cite this article as:

Heidari H, Sedigh Ebrahim-Saraie H, Amanati A, Motamedifar M, Hadi N, Bazargani A. Toxin profiles and antimicrobial resistance patterns among toxigenic clinical isolates of *Clostridioides (Clostridium) difficile*. Iran J Basic Med Sci 2019; 22:813-819. doi: 10.22038/ijbms.2019.35223.8390

## Introduction

*Clostridioides difficile* (formerly *Clostridium difficile*) is a Gram-positive rod-shaped, spore-forming, strictly anaerobic bacterium and the causative agent of *C. difficile* infection (CDI) (1). CDI, as a serious healthcare-associated infection, can cause life-threatening infectious diarrhea in hospitalized patients (2). Disruption of the intestinal microbiome induced by antibiotics is the major risk factor for the development of CDI (3).

Toxins secreted by the toxigenic strains are responsible for the occurrence of the disease. *C. difficile* toxins A and B are the main virulence factors of the pathogens, encoded by *tcdA* and *tcdB* genes, respectively. They are located on the pathogenicity locus (PaLoc). Toxin A as an enterotoxin and Toxin B with cytotoxic activity alter the actin cytoskeleton and cause cell rounding, disruption of tight junctions, and intestinal function failure (3-5).

Besides toxins A and B, some of *C. difficile* strains express a binary toxin (CDT). This additional virulence factor belongs to the ADP-ribosyltransferase family and consists of enzymatic (CDTa) and binding components (CDTb) (3-5). The *cdtA* and *cdtB* genes encode the CDT toxin that induces actin depolymerization in the

cytoskeleton, leading to an increase in the bacterial adherence to colonic epithelium and severity of infection (5, 6).

The risk of CDI is increased if *C. difficile* is resistant to the antibiotics used. Although *C. difficile* is usually susceptible to metronidazole and vancomycin (the first line of antibiotics used for the treatment of CDI), resistance or decreased susceptibility has been reported in the literature (7, 8).

Mechanisms of resistance to the members of macrolide-lincosamide-streptogramin B (MLS<sub>B</sub>) group include ribosomal modification, efflux pumps, and drug inactivation. Resistance to MLS<sub>B</sub> in *C. difficile* is mainly associated with the *erm* genes (especially *ermB*) located on a mobile genetic element (7, 9, 10). Other probable mechanisms such as efflux could have caused this type of resistance (7).

In *C. difficile*, resistance mechanisms to other antimicrobial agents such as tetracyclines, fluoroquinolones and chloramphenicol were also characterized previously. The *tet* and *catD* genes confer tetracyclines and chloramphenicol resistance, respectively. Different mutations in *gyrA* and *gyrB* are

\*Corresponding author: Abdollah Bazargani. Department of Bacteriology & Virology, School of Medicine, Shiraz University of Medical Sciences, Zand St., Imam Hossein Sq., Shiraz, Iran. Tel/Fax: +98-71-32304356; Email: bazargania@sums.ac.ir

also associated with quinolones resistance (7, 10, 11).

To the best of our knowledge, there are few data regarding CDI in Iran. Therefore, the aim of the present study was to evaluate the toxin profiles and antimicrobial resistance patterns of *C. difficile* isolates obtained from hospitalized patients with CDI in Shiraz, southwestern Iran.

## Materials and Methods

### Bacterial isolates

This study was performed on 45 toxigenic *C. difficile* isolates obtained from fecal specimens of patients with antibiotic-associated diarrhea, hospitalized in Nemazee Hospital (The main hospital affiliated to Shiraz University of Medical Sciences) and Amir Oncology Hospital from October 2017 to June 2018 (12). Only one isolate per patient was included. This study was approved by the Ethics Committee of Shiraz University of Medical Sciences (Register code: IR.SUMS.REC.1397.114).

According to the World Health Organization (WHO), diarrhea was defined as more than 3 loose and watery stools during a 24 hr period or fewer hrs (13). Also, based on the European Centre for Disease Prevention and Control (ECDC), CDI was defined as a patient with diarrhea whose stool takes the container shape, and is positive for toxigenic (toxin A and/or toxin B) *C. difficile* without any other etiology (14). Identification of the isolates was performed based on Gram staining, odor and colony characteristics on cycloserine-cefoxitin fructose agar (CCFA) plate. The *tpi* housekeeping gene (triose phosphate isomerase) was targeted by polymerase chain reaction (PCR), using specific primers for molecular confirmation (Table 1) (15). The PCR protocol consisted of a pre-denaturation step at 95 °C for 5 min, followed by 30 cycles of 60 sec at 95 °C, 45 sec at 53 °C and 50 sec at 72 °C. A final extension step was performed at 72 °C for 5 min.

### Determination of toxin profile

Genomic DNA was extracted from freshly grown colonies, using the commercial DNA extraction kits (GeneAll, Korea) according to the manufacturer's instructions. PCR was carried out for detection of the genes encoding toxin A and toxin B (*tcdA* and *tcdB*) and binary toxin CDT (*cdtA* and *cdtB*) by specific primers

(Table 1) (15, 16). The PCR reactions consisted of a pre-denaturation step at 95 °C for 5 min, followed by 30 cycles of 60 sec at 95 °C, 45 sec at 51 °C (for *tcdA*), 50 °C (for *tcdB*), 53 °C (for *cdtA* and *cdtB*), and 50 sec at 72 °C. A final extension step was performed at 72 °C for 5 min. The PCR products were separated by electrophoresis in 1% agarose gels with 1 X TAE (Tris/Acetate/EDTA) buffer, stained with safe stain load dye (CinnaGen Co., Iran) and visualized under ultraviolet (UV) illumination (Figure 1).

### Antimicrobial susceptibility testing

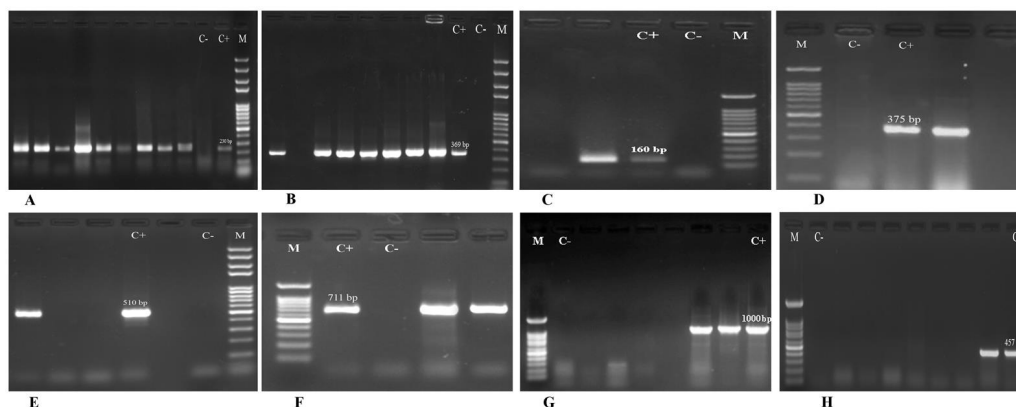
The minimum inhibitory concentrations (MICs) of six antibiotics including vancomycin, metronidazole, clindamycin, tetracycline, moxifloxacin, and chloramphenicol were determined by the agar dilution method according to the Clinical and Laboratory Standards Institute (CLSI) (17). Brucella agar supplemented with hemin (5 µg/ml), vitamin K1 (10 µg/ml), and 5% sheep blood was used for the tests. *C. difficile* ATCC 700057 was used as a control strain for the susceptibility tests. Antibiotic resistance and susceptibility were determined using the breakpoints defined by the CLSI (for metronidazole, clindamycin, tetracycline, moxifloxacin, and chloramphenicol) and the European Committee on Antimicrobial Susceptibility Testing (EUCAST) (for vancomycin) (18).

### Detection of antimicrobial resistance genes and sequencing

The genes encoding resistance to metronidazole (*nim*), MLS<sub>B</sub> (*ermA*, *ermB*, *ermC*), tetracycline (*tetM*, *tetW*), and chloramphenicol (*catD*) were detected by PCR method using specific primers (Table 1) (11, 19, 20). The PCR products were separated and visualized, as mentioned above (Figure 1). The quinolone resistance-determining-regions (QRDRs) of *gyrA* and *gyrB* were also amplified, as described previously (Table 1) (21). The amplicons were sequenced by the ABI capillary system (Macrogen Research, Seoul, Korea). The sequences were aligned with the reference sequence of *C. difficile* 630 (NCBI Reference Sequence: NC\_009089.1), using online BLAST software (<https://blast.ncbi.nlm.nih.gov/Blast.cgi>).

### Statistical analysis

The analysis was performed using SPSS™ software,



**Figure 1.** Agarose gel electrophoresis of PCR products for *tpi* (A), *tcdA* (B), *tcdB* (C), *cdtA* (D), *cdtB* (E), *ermB* (F), *tetM* (G) and *tetW* (H) genes. Lane M: 100 bp DNA size marker; Lane C-: negative control; Lane C+: positive control

**Table 1.** Primers used in the study

Gene	Function	Primer sequence (5'- 3')	Product size (bp)	Reference
<i>tpi</i>	Triose phosphate	F: AAAGAAGCTACTAAGGGTACAAA	230	15
	isomerase (housekeeping)	R: CATAATATTGGGTCTATTCTAC		
<i>tcdA</i>	Toxin A	F: AGATTCCTATATTTACATGACAATAT	369	15
		R: GTATCAGGCATAAAGTAATATACTTT		
<i>tcdB</i>	Toxin B	F: GGAAAAGAGAATGGTTTTATTAA	160	15
		R: ATCTTTAGTTATAACTTTGACATCTTT		
<i>cdtA</i>	Binary toxin	F: TGAACCTGGAAAAGGTGATG	375	16
		R: AGGATTATTTACTGGACCATTTG		
<i>cdtB</i>	Binary toxin	F: CTTAATGAAGTAAATACTGAG	510	16
		R: AACGGATCTCTTGCTTCAGTC		
<i>nim</i>	Metronidazole resistance	F: ATGTTCCAGAGAAATGCGGCGTAAGCG	458	19
<i>ermA</i>	MLS <sub>B</sub> resistance	R: GCTTCCTTGCCTGTCATGTGCTC	139	11
		F: TATCTTATCGTTGAGAAGGGATT		
<i>ermB</i>	MLS <sub>B</sub> resistance	R: CTACACTGGCTTAGGATGAAA	711	11
		F: CTCAAAACCTTTTAACGAGTG		
<i>ermC</i>	MLS <sub>B</sub> resistance	R: CCTCCCGTTAAATAATAGATA	190	11
		F: CTTGTTGATCAGATAAATTTCC		
<i>tetM</i>	Tetracycline resistance	R: ATCTTTTAGCAAACCGTATTC	1000	20
		F: TGGAAATTGATTATCAACGG		
<i>tetW</i>	Tetracycline resistance	R: TTCCAACCATACAATCCTTG	457	20
		F: CATCTCTGTGATTTTCAGCTTTTCTCTCCC		
<i>catD</i>	Chloramphenicol resistance	R: AGTCTGTTCCGGATAAGCTCTCCGCCG	500	11
		F: ATACAGCATGACCGTTAAAG		
<i>gyrA</i>	Quinolone resistance (mutation)	R: ATGTGAAATCCGTCACATAC	390	21
		F: AATGAGTGTATAGCTGGACG		
<i>gyrB</i>	Quinolone resistance (mutation)	R: TCTTTTAACGACTCATCAAAGTT	390	21
		F: AGTTGATGAACTGGGGTCTT		
		R: TCAAAATCTTCTCCAATACCA		

MLS<sub>B</sub>: macrolide–lincosamide–streptogramin B

version 21.0 (IBM Co., Armonk, NY, USA). The distribution of MLS<sub>B</sub> resistance genes among clindamycin non-susceptible and susceptible isolates was calculated by Chi-square and Fisher’s exact tests for each gene. The prevalence of tetracycline resistance genes among tetracycline non-susceptible and susceptible isolates was also calculated by the above mentioned tests. A *P*-value of ≤ 0.05 was considered as statistically significant.

## Results

Gram-positive bacilli, with subterminal endospores were observed in Gram-stained smears. Their yellow colonies had horse stable odor and chartreuse fluorescence under the UV light. Moreover, the *tpi* gene was found in 100% of the isolates and they were molecularly confirmed. All the isolates possessed at least one toxin associated gene. The genes encoding binary toxin were found in six (13.3%) isolates. The *cdtA* was present in five (11.1%) isolates and only one strain carried both *cdtA* and *cdtB* genes (2.2%). As shown in Table 2, predominant toxin profile was *tcdA*<sup>+</sup>, *tcdB*<sup>+</sup>, *cdtA*<sup>-</sup>, *cdtB*<sup>-</sup> (82.2%) followed by *tcdA*<sup>+</sup>, *tcdB*<sup>+</sup>, *cdtA*<sup>+</sup>, *cdtB*<sup>-</sup> (11.1%), *tcdA*<sup>-</sup>, *tcdB*<sup>+</sup>, *cdtA*<sup>-</sup>, *cdtB*<sup>-</sup> (4.5%), and *tcdA*<sup>+</sup>,

*tcdB*<sup>+</sup>, *cdtA*<sup>+</sup>, *cdtB*<sup>+</sup> (2.2%).

According to MIC results, resistance to tetracycline (MIC ≥16 µg/ml), clindamycin (MIC ≥8 µg/ml) and moxifloxacin (MIC ≥8 µg/ml) was observed in 30 (66.7%), 27 (60%) and 19 (42.2%) isolates, respectively (Table 3). None of the strains showed resistance to other antibiotics tested. The details of MIC results, MIC<sub>50</sub> and MIC<sub>90</sub> of the tested antibiotics against the isolates are shown in Table 3.

The distribution of the *ermB* gene was 57.8% and the *ermA* and *ermC* genes were not detected amongst the isolates. The presence of *ermB* gene in clindamycin non-susceptible isolates was more than susceptible isolates, significantly (*P*<0.001). Also, the frequency of *tetM* and *tetW* genes was 62.2% and 13.3%, respectively. The *tetM* gene was more prevalent in tetracycline non-susceptible in comparison to susceptible isolates with a significant correlation (*P*<0.001). However, other resistance-related genes including *nim* and *catD* were not found in any of the isolates. Sequencing analysis of *gyrA* and *gyrB* revealed that of 19 moxifloxacin resistant strains, 15 isolates possessed (Thr82→Ile) substitution in GyrA, and four isolates had (Asp426→Asn) substitution in GyrB (Table 2).

**Table 2.** Toxin profiles and antimicrobial resistance patterns of *Clostridioides (Clostridium) difficile*

No. of isolates	Underlying disease	Toxin profile ( <i>tcdA</i> , <i>tcdB</i> / CDT)	Resistance pattern	Resistance genes	GyrA/GyrB substitution	
1		<i>tcdA</i> , <i>tcdB</i>	CD, TET	<i>ermB</i> , <i>tetM</i>	-	
2		<i>tcdA</i> , <i>tcdB</i>	CD, MXF	<i>ermB</i>	GyrA (Thr82→Ile)	
3		<i>tcdA</i> , <i>tcdB</i>	CD, TET, MXF	<i>ermB</i> , <i>tetM</i>	GyrA (Thr82→Ile)	
4		<i>tcdA</i> , <i>tcdB</i> / <i>cdtA</i>	CD, TET, MXF	<i>ermB</i> , <i>tetM</i>	GyrB (Asp426→Asn)	
5		<i>tcdA</i> , <i>tcdB</i>	CD, MXF	-	GyrA (Thr82→Ile)	
6	Gastrointestinal diseases (15)	<i>tcdA</i> , <i>tcdB</i>	TET	<i>tetM</i>	-	
7		<i>tcdA</i> , <i>tcdB</i>	CD, TET	<i>ermB</i> , <i>tetM</i>	-	
8		<i>tcdA</i> , <i>tcdB</i>	TET, MXF	<i>tetW</i>	GyrA (Thr82→Ile)	
9		<i>tcdA</i> , <i>tcdB</i>	CD, MXF	<i>ermB</i>	GyrA (Thr82→Ile)	
10		<i>tcdA</i> , <i>tcdB</i>	TET, MXF	<i>tetM</i> , <i>tetW</i>	GyrA (Thr82→Ile)	
11		<i>tcdA</i> , <i>tcdB</i>	-	-	-	
12		<i>tcdA</i> , <i>tcdB</i> / <i>cdtA</i>	TET	<i>tetM</i>	-	
13		<i>tcdA</i> , <i>tcdB</i> / <i>cdtA</i>	TET, MXF	<i>tetM</i>	GyrA (Thr82→Ile)	
14		<i>tcdA</i> , <i>tcdB</i>	CD, MXF	<i>ermB</i>	GyrA (Thr82→Ile)	
15		<i>tcdA</i> , <i>tcdB</i>	CD, TET, MXF	<i>ermB</i> , <i>tetM</i>	GyrA (Thr82→Ile)	
16		<i>tcdA</i> , <i>tcdB</i> / <i>cdtA</i>	CD	-	-	
17		<i>tcdA</i> , <i>tcdB</i>	CD	<i>ermB</i>	-	
18		<i>tcdA</i> , <i>tcdB</i>	CD, TET	<i>ermB</i> , <i>tetM</i> , <i>tetW</i>	-	
19		Hematologic disorders (10)	<i>tcdA</i> , <i>tcdB</i>	CD, TET, MXF	<i>ermB</i> , <i>tetM</i>	GyrB (Asp426→Asn)
20			<i>tcdA</i> , <i>tcdB</i>	CD, TET	<i>ermB</i> , <i>tetM</i>	-
21	<i>tcdA</i> , <i>tcdB</i>		CD, TET	<i>ermB</i> , <i>tetM</i>	-	
22	<i>tcdA</i> , <i>tcdB</i>		CD	<i>ermB</i>	-	
23	<i>tcdA</i> , <i>tcdB</i>		CD, TET	<i>ermB</i> , <i>tetM</i>	-	
24	<i>tcdA</i> , <i>tcdB</i>		TET, MXF	<i>ermB</i> , <i>tetM</i>	GyrA (Thr82→Ile)	
25	<i>tcdA</i> , <i>tcdB</i>		CD, TET, MXF	<i>ermB</i> , <i>tetM</i>	GyrA (Thr82→Ile)	
26	<i>tcdA</i> , <i>tcdB</i>		TET	<i>tetM</i> , <i>tetW</i>	-	
27	<i>tcdA</i> , <i>tcdB</i>		CD	<i>ermB</i>	-	
28	Liver diseases (6)		<i>tcdA</i> , <i>tcdB</i> / <i>cdtA</i>	CD, TET	<i>ermB</i> , <i>tetM</i>	-
29		<i>tcdA</i> , <i>tcdB</i> ,	TET	<i>ermB</i> , <i>tetM</i>	-	
30		<i>tcdA</i> , <i>tcdB</i>	TET, MXF	<i>tetM</i>	GyrA (Thr82→Ile)	
31		<i>tcdA</i> , <i>tcdB</i> / <i>cdtA</i> , <i>cdtB</i>	CD, TET, MXF	<i>ermB</i> , <i>tetM</i>	GyrA (Thr82→Ile)	
32		<i>tcdA</i> , <i>tcdB</i>	CD, MXF	<i>ermB</i>	GyrB (Asp426→Asn)	
33		<i>tcdA</i> , <i>tcdB</i>	CD, TET	<i>tetM</i>	-	
34	Kidney diseases (5)	<i>tcdB</i>	CD, TET	<i>tetM</i>	-	
35		<i>tcdA</i> , <i>tcdB</i>	TET, MXF	<i>tetM</i>	GyrA (Thr82→Ile)	
36		<i>tcdA</i> , <i>tcdB</i>	TET	<i>ermB</i> , <i>tetM</i> , <i>tetW</i>	-	
37		<i>tcdA</i> , <i>tcdB</i>	-	-	-	
38		<i>tcdA</i> , <i>tcdB</i>	-	-	-	
39	Metabolic disorders (4)	<i>tcdA</i> , <i>tcdB</i>	TET	<i>tetW</i>	-	
40		<i>tcdB</i>	CD, TET	<i>ermB</i> , <i>tetM</i>	-	
41		<i>tcdA</i> , <i>tcdB</i>	MXF	-	GyrA (Thr82→Ile)	
42	Pneumonia (2)	<i>tcdA</i> , <i>tcdB</i>	CD, MXF	<i>ermB</i>	GyrB (Asp426→Asn)	
43		<i>tcdA</i> , <i>tcdB</i>	TET	<i>tetM</i>	-	
44	Eye diseases (2)	<i>tcdA</i> , <i>tcdB</i>	-	-	-	
45		Osteosarcoma (1)	<i>tcdA</i> , <i>tcdB</i>	CD, TET	<i>ermB</i> , <i>tetM</i>	-

CD: Clindamycin; TET: Tetracycline; MXF: Moxifloxacin

**Table 3.** Minimum inhibitory concentrations (MICs) of the tested antibiotics against *Clostridioides (Clostridium) difficile* isolates

Antibiotic	MIC (µg/ml)												
	0.125	0.19	0.25	0.38	0.5	0.75	1	1.5	2	4	8	16	≥32
Vancomycin	4	10	8	<u>9</u>	3	7	4						
Metronidazole					12	<b>16</b>	7	5	5				
Clindamycin							3		12	3	4	<b>2</b>	<b>21</b>
Tetracycline					2		5		4	2	2	<b>11</b>	<b>19</b>
Moxifloxacin					3		5		14	<b>4</b>	5	7	<b>7</b>
Chloramphenicol					8		<b>15</b>		11	6	<b>2</b>	3	

MIC: Minimum inhibitory concentration; underlined: MIC<sub>50</sub>; boldface: MIC<sub>90</sub>

## Discussion

In the present study, toxin profiles and antimicrobial susceptibilities of CDI causative isolates were investigated. All the isolates were toxigenic and carried at least one toxin associated gene (Table 2). Similarly, a high distribution of the genes encoding toxins A and B amongst clinical *C. difficile* isolates was reported in various studies (1, 5, 22-24). The main role of these virulence factors to cause CDI had been well characterized (3, 4).

Our findings indicated that one (2.2%) isolate had both CDT related genes (*cdtA* and *cdtB*) and five (11.1%) isolates harboured *cdtA* gene without *cdtB* (Table 2). Clinical *C. difficile* isolates with only one of the two components gene (*cdtA* or *cdtB*) have been reported from other Asian countries (9, 25). It seems that this pattern of binary toxin genes is prevalent in our geographical region. Similar to our findings, in the other study from Iran, these two genes were detected in a CDT positive isolate simultaneously (26). Presence and expression of binary toxin genes create synergy with other toxins and increase the pathogenicity of *C. difficile* (25, 27).

According to our results, the most frequent toxin profile was A<sup>+</sup> B<sup>+</sup> CDT<sup>-</sup>. Although a different pattern was published as the major genotype from Kerman, Iran in 2017 (26), but A<sup>+</sup> B<sup>+</sup> CDT<sup>-</sup> profile was predominant in the several studies around the world (5, 28-32).

MICs results showed that all the isolates were completely inhibited by vancomycin and metronidazole (Table 3). Various studies showed the same results and these agents were effective against their isolates (1, 5, 9, 24, 33-37). Although vancomycin and metronidazole were efficient choices against CDI in our study, however, their prescription should be under control for prevention of the emergence of resistant strains. In recent years, vancomycin and/or metronidazole resistance has been observed in Iran and the other countries (8, 32, 38, 39). These data suggest that CDI therapy by the mentioned antibiotics could be problematic in the future. In the current study, chloramphenicol resistance and its related gene (*catD*) were not found amongst the isolates (MICs ≤ 16) (Table 3). In contrast, resistance to this antibiotic was described in previous studies (11, 32, 35, 40, 41). The rate of chloramphenicol prescription in

our investigated hospitals is very low. Therefore, it can justify lack of chloramphenicol resistance.

We found that 30 (66.7%) *C. difficile* isolates displayed tetracycline resistance (MIC ≥ 16) (Table 3). They carried at least one *tetM* or *tetW* gene and four strains had both genes (Table 2). Resistance to tetracycline was shown in several studies (10, 20, 31, 35, 37, 38). Our findings were in line with the previous report that showed that the predominant *tet* gene in *C. difficile* was *tetM* and the second frequent one was *tetW* (20). However, in a study conducted by Abuderman *et al.*, only *tetM* was observed amongst the resistant *C. difficile* isolates (9). One of the reasons for notable rates of tetracycline resistance and *tet* genes distribution is the presence of *tet* cluster of genes on transferable mobile elements (7, 8).

The percentage of the isolates resistant to clindamycin (MIC ≥ 8) and moxifloxacin (MIC ≥ 8) was 60% (27/45) and 42.2% (19/45), respectively. The *ermB* gene was found in 26 (57.8%) isolates and *ermA* and *ermC* genes were not detected amongst any of the strains. As mentioned in several studies, *ermB* had a key role in MLS<sub>B</sub> resistance of *C. difficile* isolates (9-11, 20, 42). According to our findings, some *ermB*-negative strains were clindamycin resistant (Table 2). Other mechanisms such as efflux pumps or *cfr* gene may be responsible for resistance. The *cfr* gene, which encodes an RNA methyltransferase, can confer MLS<sub>B</sub> resistance in *erm*-negative bacteria (8). On the other hand, three susceptible isolates carried the *ermB* gene. This sensitivity is probably related to the insufficient expression of the gene.

Sequencing analysis revealed that all moxifloxacin resistant isolates possessed substitution in GyrA or GyrB (Table 2). The substitution Thr82 to Ile in GyrA was found in the majority of the resistant strains (15/19). Furthermore, substitution Asp426 to Asn in GyrB also accounted for resistance to other moxifloxacin resistant isolates (4/19). The same substitution in GyrA was remarkable amino acid changes in previous studies (21, 43).

## Conclusion

The most frequent toxin profile was *tcdA*<sup>+</sup>, *tcdB*<sup>+</sup>, *cdtA*<sup>+</sup>, *cdtB*<sup>-</sup> (82.2%), and only one isolate harboured all

toxin associated genes (*tcdA*<sup>+</sup>, *tcdB*<sup>+</sup>, *cdtA*<sup>+</sup>, *cdtB*<sup>+</sup>) (2.2%). The genes encoding binary toxin were also found in six (13.3%) strains. Only one strain carried both *cdtA* and *cdtB* genes (2.2%). Resistance to tetracycline, clindamycin and moxifloxacin was observed in 30 (66.7%), 27 (60%) and 19 (42.2%) isolates, respectively. Metronidazole, vancomycin and chloramphenicol resistance was not seen amongst the isolates. The distribution of the *ermB* gene was 57.8% and the *ermA* and *ermC* genes were not detected. The *tetM* and *tetW* genes were found in 62.2% and 13.3%, respectively. Other resistance-related genes including *nim* and *catD* were not observed in any of the isolates. Sequencing analysis of *gyrA* and *gyrB* revealed that the substitution of Thr82 to Ile in GyrA was the major amino acid change in the resistant strains (15/19). Also, substitution of Asp426 to Asn in GyrB was responsible for resistance to other moxifloxacin resistant isolates (4/19). Our data indicated notable virulence and antibiotic resistance traits amongst the isolates. Therefore, infection control strategies should be performed in order to curb the colonization and dissemination of *C. difficile* strains in hospital.

### Acknowledgment

This study was supported by Shiraz University of Medical Sciences grant no. 96-14911. The results described in this paper were part of PhD thesis of H Heidari under the supervision of Dr A Bazargani.

### Conflicts of Interest

The authors declare that they have no competing interests.

### References

- Berger FK, Rasheed SS, Araj GF, Mahfouz R, Rimmani HH, Karaoui WR, et al. Molecular characterization, toxin detection and resistance testing of human clinical *Clostridium difficile* isolates from Lebanon. *Int J Med Microbiol* 2018; 308:358-363.
- Lim SC, Androga GO, Knight DR, Moono P, Foster NE, Riley TV. Antimicrobial susceptibility of *Clostridium difficile* isolated from food and environmental sources in Western Australia. *Int J Antimicrob Agents* 2018; 52:411-415.
- Janoir C. Virulence factors of *Clostridium difficile* and their role during infection. *Anaerobe* 2016; 37:13-24.
- Aktories K, Papatheodorou P, Schwan C. Binary *Clostridium difficile* toxin (CDT) - a virulence factor disturbing the cytoskeleton. *Anaerobe* 2018; 53:21-29.
- Tokimatsu I, Shigemura K, Osawa K, Kinugawa S, Kitagawa K, Nakanishi N, et al. Molecular epidemiologic study of *Clostridium difficile* infections in university hospitals: results of a nationwide study in Japan. *J Infect Chemother* 2018; 24:641-647.
- Stubbs S, Rupnik M, Gibert M, Brazier J, Duerden B, Popoff M. Production of actin-specific ADP-ribosyltransferase (binary toxin) by strains of *Clostridium difficile*. *FEMS Microbiol Lett* 2000; 186:307-312.
- Huang H, Weintraub A, Fang H, Nord CE. Antimicrobial resistance in *Clostridium difficile*. *Int J Antimicrob Agents* 2009; 34:516-522.
- Peng Z, Jin D, Kim HB, Stratton CW, Wu B, Tang YW, et al. Update on antimicrobial resistance in *Clostridium difficile*: resistance mechanisms and antimicrobial susceptibility testing. *J Clin Microbiol* 2017; 55:1998-2008.
- Abuderman AA, Mateen A, Syed R, Sawsan Aloahd M. Molecular characterization of *Clostridium difficile* isolated from carriage and association of its pathogenicity to prevalent toxic genes. *Microb Pathog* 2018; 120:1-7.
- Yang J, Zhang X, Liu X, Cai L, Feng P, Wang X, et al. Antimicrobial susceptibility of *Clostridium difficile* isolates from ICU colonized patients revealed alert to ST-37 (RT 017) isolates. *Diagn Microbiol Infect Dis* 2017; 89:161-163.
- Spigaglia P, Mastrantonio P. Comparative analysis of *Clostridium difficile* clinical isolates belonging to different genetic lineages and time periods. *J Med Microbiol* 2004; 53:1129-1136.
- Sedigh Ebrahim-Saraie H, Heidari H, Amanati A, Bazargani A, Alireza Taghavi S, Nikokar I, et al. A multicenter-based study on epidemiology, antibiotic susceptibility and risk factors of toxigenic *Clostridium difficile* in hospitalized patients in southwestern Iran. *Infez Med* 2018; 26: 308-315.
- Jamal W, Pauline E, Rotimi V. A prospective study of community-associated *Clostridium difficile* infection in Kuwait: epidemiology and ribotypes. *Anaerobe* 2015; 35:28-32.
- Jamal WY, Rotimi VO. Surveillance of antibiotic resistance among hospital- and community-acquired toxigenic *Clostridium difficile* isolates over 5-year period in Kuwait. *PLoS One* 2016; 11:e0161411.
- Lemee L, Dhalluin A, Testelin S, Mattrat MA, Maillard K, Lemeland JF, et al. Multiplex PCR targeting *tpi* (triose phosphate isomerase), *tcdA* (toxin A), and *tcdB* (toxin B) genes for toxigenic culture of *Clostridium difficile*. *J Clin Microbiol* 2004; 42:5710-5714.
- Terhes G, Urban E, Soki J, Hamid KA, Nagy E. Community-acquired *Clostridium difficile* diarrhea caused by binary toxin, toxin A, and toxin B gene-positive isolates in Hungary. *J Clin Microbiol* 2004; 42:4316-4318.
- Wayne PA. Performance standards for antimicrobial susceptibility testing. Clinical and laboratory standards institute (CLSI) 28th informational supplement. 2018: M100-S28.
- The European committee on antimicrobial susceptibility testing. Breakpoint tables for interpretation of MICs and zone diameters, version 8, 2018. [http://www.eucast.org/clinical\\_breakpoints/](http://www.eucast.org/clinical_breakpoints/).
- Trinh S, Reysset G. Detection by PCR of the *nim* genes encoding 5-nitroimidazole resistance in *Bacteroides* spp. *J Clin Microbiol* 1996; 34:2078-2084.
- Fry PR, Thakur S, Abley M, Gebreyes WA. Antimicrobial resistance, toxinotype, and genotypic profiling of *Clostridium difficile* isolates of swine origin. *J Clin Microbiol* 2012; 50:2366-2372.
- Spigaglia P, Barbanti F, Mastrantonio P, Brazier JS, Barbut F, Delmee M, et al. Fluoroquinolone resistance in *Clostridium difficile* isolates from a prospective study of *C. difficile* infections in Europe. *J Med Microbiol* 2008; 57:784-789.
- Karlowsky JA, Adam HJ, Kosowan T, Baxter MR, Nichol KA, Laing NM, et al. PCR ribotyping and antimicrobial susceptibility testing of isolates of *Clostridium difficile* cultured from toxin-positive diarrheal stools of patients receiving medical care in Canadian hospitals: the Canadian *Clostridium difficile* Surveillance Study (CAN-DIFF) 2013-2015. *Diagn Microbiol Infect Dis* 2018; 91:105-111.
- Costa CL, Mano de Carvalho CB, Gonzalez RH, Gifoni MAC, Ribeiro RA, Quesada-Gomez C, et al. Molecular epidemiology of *Clostridium difficile* infection in a Brazilian cancer hospital. *Anaerobe* 2017; 48:232-236.
- Weber I, Riera E, Deniz C, Perez JL, Oliver A, Mena A. Molecular epidemiology and resistance profiles of *Clostridium difficile* in a tertiary care hospital in Spain. *Int J Med Microbiol* 2013; 303:128-133.
- Vaishnavi C, Singh M, Mahmood S, Kochhar R. Prevalence

- and molecular types of *Clostridium difficile* isolates from faecal specimens of patients in a tertiary care centre. *J Med Microbiol* 2015; 64:1297-1304.
26. Rezaazadeh Zarandi E, Mansouri S, Nakhaee N, Sarafzadeh F, Iranmanesh Z, Moradi M. Frequency of antibiotic associated diarrhea caused by *Clostridium difficile* among hospitalized patients in intensive care unit, Kerman, Iran. *Gastroenterol Hepatol Bed Bench* 2017; 10:229-234.
27. Goncalves C, Decre D, Barbut F, Burghoffer B, Petit JC. Prevalence and characterization of a binary toxin (actin-specific ADP-ribosyltransferase) from *Clostridium difficile*. *J Clin Microbiol* 2004; 42:1933-1939.
28. Krutova M, Nyc O, Matejkova J, Allerberger F, Wilcox MH, Kuijper EJ. Molecular characterisation of Czech *Clostridium difficile* isolates collected in 2013-2015. *Int J Med Microbiol* 2016; 306:479-485.
29. Cejas D, Rios Osorio NR, Quiros R, Sadorin R, Berger MA, Gutkind G, et al. Detection and molecular characterization of *Clostridium difficile* ST 1 in Buenos Aires, Argentina. *Anaerobe* 2018; 49:14-17.
30. Liu XS, Li WG, Zhang WZ, Wu Y, Lu JX. Molecular characterization of *Clostridium difficile* isolates in China from 2010 to 2015. *Front Microbiol* 2018; 9:845-852.
31. Luo Y, Zhang W, Cheng JW, Xiao M, Sun GR, Guo CJ, et al. Molecular epidemiology of *Clostridium difficile* in two tertiary care hospitals in Shandong province, China. *Infect Drug Resist* 2018; 11:489-500.
32. Peng Z, Addisu A, Alrabaa S, Sun X. Antibiotic resistance and toxin production of *Clostridium difficile* isolates from the hospitalized patients in a large hospital in Florida. *Front Microbiol* 2017; 8:2584-2591.
33. Androga GO, Knight DR, Lim SC, Foster NF, Riley TV. Antimicrobial resistance in large clostridial toxin-negative, binary toxin-positive *Clostridium difficile* ribotypes. *Anaerobe* 2018; 54:55-60.
34. Jimenez A, Araya R, Paniagua D, Camacho-Mora Z, Du T, Golding GR, et al. Molecular epidemiology and antimicrobial resistance of *Clostridium difficile* in a national geriatric hospital in Costa Rica. *J Hosp Infect* 2018; 99:475-480.
35. Gao Q, Wu S, Huang H, Ni Y, Chen Y, Hu Y, et al. Toxin profiles, PCR ribotypes and resistance patterns of *Clostridium difficile*: a multicentre study in China, 2012-2013. *Int J Antimicrob Agents* 2016; 48:736-739.
36. Hidalgo-Villeda F, Tzoc E, Torres L, Bu E, Rodriguez C, Quesada-Gomez C. Diversity of multidrug-resistant epidemic *Clostridium difficile* NAP1/RT027/ST01 strains in tertiary hospitals from Honduras. *Anaerobe* 2018; 52:75-78.
37. Rodriguez C, Fernandez J, Van Broeck J, Taminiau B, Avesani V, Boga JA, et al. *Clostridium difficile* presence in Spanish and Belgian hospitals. *Microb Pathog* 2016; 100:141-148.
38. Hampikyan H, Bingol EB, Muratoglu K, Akkaya E, Cetin O, Colak H. The prevalence of *Clostridium difficile* in cattle and sheep carcasses and the antibiotic susceptibility of isolates. *Meat Sci* 2018; 139:120-124.
39. Goudarzi M, Goudarzi H, Alebouyeh M, Azimi Rad M, Shayegan Mehr FS, Zali MR, et al. Antimicrobial susceptibility of *Clostridium difficile* clinical isolates in Iran. *Iran Red Crescent Med J* 2013; 15:704-711.
40. Freeman J, Vernon J, Pilling S, Morris K, Nicholson S, Shearman S, et al. The ClosER study: results from a three-year pan-European longitudinal surveillance of antibiotic resistance among prevalent *Clostridium difficile* ribotypes, 2011-2014. *Clin Microbiol Infect* 2018; 24:724-731.
41. Freeman J, Vernon J, Morris K, Nicholson S, Todhunter S, Longshaw C, et al. Pan-European longitudinal surveillance of antibiotic resistance among prevalent *Clostridium difficile* ribotypes. *Clin Microbiol Infect* 2015; 21:248 e249-248 e216.
42. Kuwata Y, Tanimoto S, Sawabe E, Shima M, Takahashi Y, Ushizawa H, et al. Molecular epidemiology and antimicrobial susceptibility of *Clostridium difficile* isolated from a university teaching hospital in Japan. *Eur J Clin Microbiol Infect Dis* 2015; 34:763-772.
43. Cheng JW, Yang QW, Xiao M, Yu SY, Zhou ML, Kudinha T, et al. High in vitro activity of fidaxomicin against *Clostridium difficile* isolates from a university teaching hospital in China. *J Microbiol Immunol Infect* 2018; 51:411-416.