

Cutaneous wound healing in aged, high fat diet-induced obese female or male C57BL/6 mice

Marta Kopcewicz¹, Katarzyna Walendzik¹, Joanna Bukowska¹, Anna Kur-Piotrowska¹, Sylwia Machcinska¹, Jeffrey M. Gimble^{2,3,4}, Barbara Gawronska-Kozak¹

¹Institute of Animal Reproduction and Food Research, Polish Academy of Sciences, Olsztyn, Poland

²LaCell LLC, New Orleans, LA 70112, USA

³Obatala Sciences Inc., New Orleans, LA 70148, USA

⁴Departments of Medicine, Structural and Cellular Biology, and Surgery and Center for Stem Cell Research and Regenerative Medicine, Tulane University School of Medicine, New Orleans, LA 70112, USA

Correspondence to: Barbara Gawronska-Kozak; email: b.kozak@pan.olsztyn.pl

Keywords: age, sex, diet, skin, wound

Received: October 22, 2019

Accepted: February 25, 2020

Published: April 15, 2020

Copyright: Kopcewicz et al. This is an open-access article distributed under the terms of the Creative Commons Attribution License (CC BY 3.0), which permits unrestricted use, distribution, and reproduction in any medium, provided the original author and source are credited.

ABSTRACT

Since there are limited studies analyzing the impact of age, sex and obesity on cutaneous repair, the current study evaluated excisional skin wound healing as a function of age, sex and diet in C57BL/6 mice subjected to either low (LFD) or high (HFD) fat diet. Older mice accumulated increased body fat relative to younger mice under HFD. Skin wound healing at particular stages was affected by age in the aspect of Tgf β -1, MCP-1, Mmp-9 and Mmp-13 expression. The most profound, cumulative effect was observed for the combination of two parameters: age and sex. While skin of younger males displayed extremely high collagen 1 and collagen 3 expression, younger females showed exceptionally high Mmp-13 expression at day 3 and 7 after injury. Diet as a single variable modified the thickness of dermis due to increased dermal White Adipose Tissue (dWAT) accumulation in mice fed HFD. The combination of age and diet affected the re-epithelialization and inflammatory response of injured skin. Overall, our data indicate that age has the most fundamental impact although all components (age, sex and diet) contribute to skin repair.

INTRODUCTION

In adult mammals, skin wound healing is a complex repair process which leads to rapid and effective wound closure. Cutaneous wound healing encompasses a sequence of overlapping phases, including inflammation, new tissue formation and tissue remodelling [1, 2]. The disruption of blood vessels during the skin injury causes blood and fluid loss. The formation of fibrin clot, which provides a temporary scaffold for migrating cells, re-establishes skin hemostasis [1, 2]. In the inflammatory phase, platelet aggregation is followed by the recruitment of polymorphonuclear leukocytes (neutrophils) and invasion of blood monocytes which subsequently differentiate into macrophages [3]. The components of the inflammatory response remove debris and prevent

infection. During the second stage of wound healing, the new tissue formation, different cell types are involved in order to achieve permanent closure of the wound gap and restore the protective barrier skin function. Keratinocytes proliferate and migrate over the injured dermis in the process of re-epithelialization, new blood vessels are formed and extracellular matrix is synthesized by interacting fibroblasts and myofibroblasts. Remodelling is the final stage of the skin wound healing process which may last for a year or longer. This phase serves to restore the regular architecture of the dermis following injury and reorganizes the immature extracellular matrix by re-balancing the dynamic between collagen synthesis, arrangement and degradation [4]. This remodelling phase involves apoptosis of a variety of cell types within the wound site. The scar tissue that is formed in post injured

area never achieves the strength and functionality of uninjured skin [2].

Multiple factors influencing cutaneous injury repair can lead to improper or impaired wound healing. Factors that influence skin wound healing can be categorized as local, such as oxygenation and infection, or systemic [5], such as obesity, age and sex. Obesity is defined as excessive fat accumulation, which constitutes a risk for human health (World Health Organization (WHO); <https://www.who.int/topics/obesity/en/>). In 2016 nearly half a billion adults worldwide were obese (Global Health Observatory (GHO); https://www.who.int/gho/ncd/risk_factors/overweight_text/en/). Over the past 20 years, adult and childhood obesity rates have doubled, creating a risk of heart disease, hypertension, cancer, stroke and diabetes. Obesity alters the barrier function of the skin, causing increased transepidermal water loss [6]. Moreover, obesity predispose individuals to the occurrence of impaired wound healing promoting pressure and venous ulcers [5]. Several studies indicate that the increment of adipose tissue may contribute to impaired dermal functions and defects in skin wound healing [7, 8]. Furthermore, adipocytes that are the source of multiple bioactive substances, known as adipose-derived secreted factors (adipokines), may exert pro-inflammatory or anti-inflammatory effects. Imbalanced/disrupted expression of these adipokines secondary to adipose tissue dysfunction, can be linked to a chronic low-grade inflammatory state and injury repair complications [9].

Old age is one of the main systemic factors affecting skin wound healing process. The WHO estimated that between year 2015 and 2050 the number of people aged 60 years and older will rise from 900 million to 2 billion (WHO; <https://www.who.int/features/factfiles/ageing/en/>). The skin's structure changes with advancing age due to the sum of extrinsic and intrinsic influences. Extrinsic modulators reflect the cumulative effect of environmental insults, such as UV radiation, whereas intrinsic aging relates to skin changes that are independent of environmental factors, such as genetic influences. Advancing age is accompanied by decreases in dermal cellular content, blood flow and lymphatic drainage [10], collagen content, and elasticity [11]. All these age-related changes lead to alterations in skin wound healing. Multiple clinical studies have shown that skin wound healing in healthy elderly individuals is delayed, although it is not impaired in terms of the quality of healing [10, 12]. The most commonly described modifications of cutaneous injury repair in the elderly are delayed infiltration of T-cells into the wound with reduced macrophages phagocytic capacity, [13, 14], delayed re-epithelialization and angiogenesis [14], altered expression of growth factors and their receptors, such as

platelet derived growth factor (PDGF) and epidermal growth factor (EGF) [15] as well as an imbalance in the Mmp/Timp-1 (matrix metalloproteinases/ tissue inhibitor of matrix metalloproteinases 1) ratio with increased levels of Mmps [16] and decreased Timp-1 expression [17]. An additional age-related modification noted in murine incisional skin wound healing has been a change in the immunolocalization of transforming growth factor beta (Tgfb) isoforms [11].

Accumulating evidence indicates that sexual dimorphism exists in the skin structure and skin wound healing process. In human, men's skin is thicker than women's at all ages [18]. Skin thickness decreases linearly with advancing age, starting at the age of 50 in women and at the age of 20 in men [19]. Likewise, murine studies have shown that male mice have thicker dermis but thinner epidermis and hypodermis than females [20, 21].

While the ability of individual biological factor, such as age or obesity, to disrupt subsequent phases of wound repair have been described, comprehensive analyzes examining the combined effects of age, sex and obesity on cutaneous wound healing are limited. Hence, the present study was designed to explore the effect of age, sex and LFD vs HFD on skin wound healing in C57BL/6J (B6) mice.

RESULTS

Young (2-3 months) and old (18-19 months) B6 mice of both sexes were assigned into groups fed for a period of 8 weeks with either chow diet (low fat diet- LFD 13 kcal% fat) or high fat diet (HFD 59 kcal% fat; Figure 1A). After 8 weeks of HFD or LFD, 4-5 months (young) and 20-21 months (old) cohorts underwent 4x4mm diameter skin punches. Skin tissues samples were collected subsequently at day 0 and 3, 7, 14 and 21 after wounding (Figure 1B).

Body composition

Over the course of the 8 week feeding experiment, an increase in body weight was stimulated by HFD in both males and females (Figure 2A, 2B; Supplementary Table 1). The most evident differences in body weight gain was detected between females (Figure 2A) and males (Figure 2B; Supplementary Table 2). The stable, linear increase in body weight was substantially greater for males relative to females, regardless of age.

The difference in body weight gain between HFD and LFD reached statistical significance within 2 weeks of diet ($p < 0.05$) for young males and 1 week for old ($p < 0.05$), whereas for females this was achieved after 4 weeks of diet for young ($p < 0.05$) and 3 weeks for old

($p < 0.05$). The different response between female and male mice to HFD indicates a clear role of sex to dietary regiment (Supplementary Tables 1–3).

Weekly body composition analyzes performed by nuclear magnetic resonance (NMR) confirmed sex differences in body weight gain (Figure 2C–2F; Supplementary Table 4–9). The increase in body weight in males and females fed HFD was achieved primarily

through fat mass accumulation (Figure 2C, 2D). The statistically significant differences in body fat mass gain between old HFD vs LFD male mice were apparent after 1 week of diet ($p < 0.001$) and continued to increase until the end of dietary program ($p < 0.001$), whereas for old females it was delayed until the 3rd week ($p < 0.05$, Figure 2C, 2D; Supplementary Table 4–6). No differences in body fat content was observed in mice fed LFD.

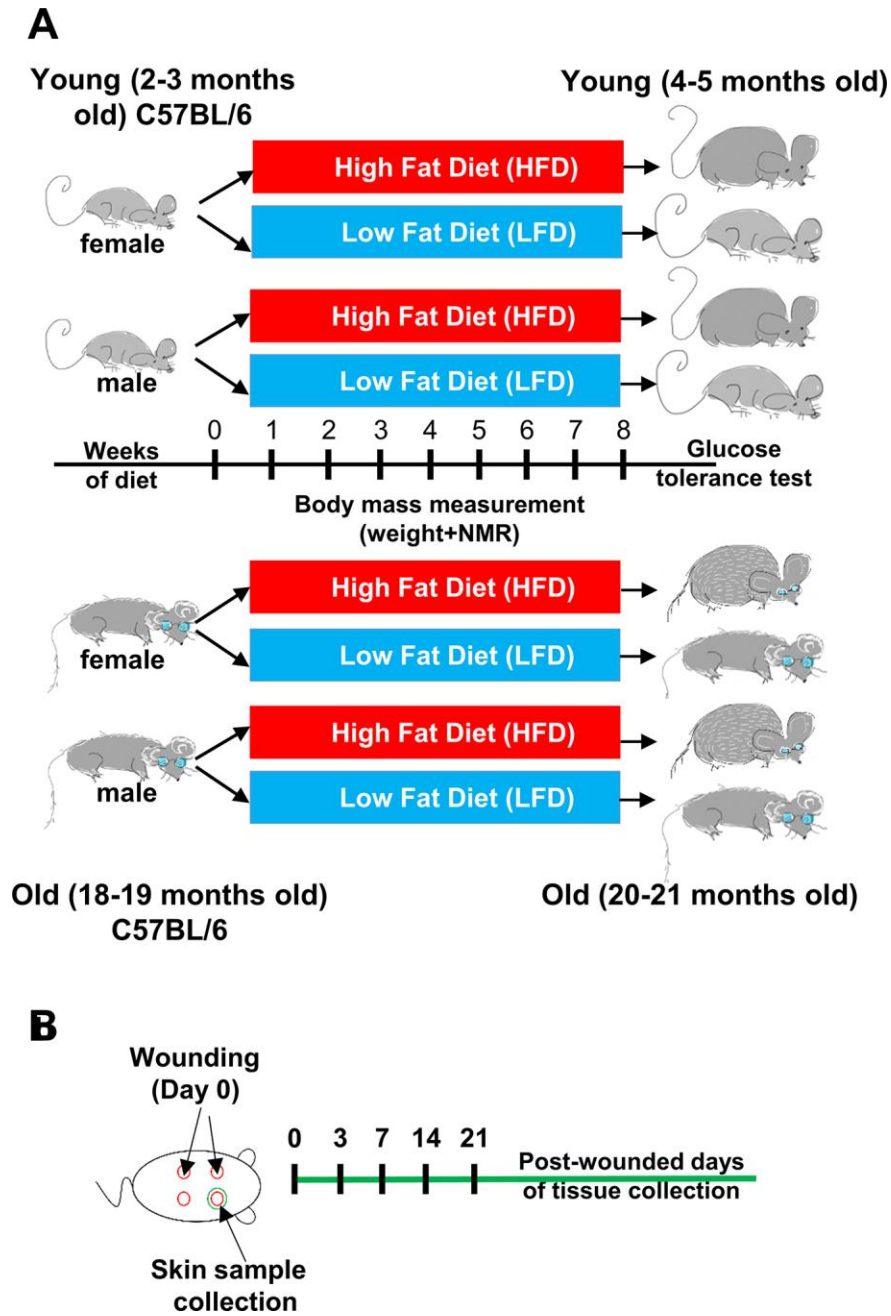


Figure 1. Scheme of the experimental design. (A) Young (2-3 months old) female ($n=48$) and male ($n=48$), and old (18-19 months old) female ($n=48$) and male ($n=48$) C57BL/6 (B6) mice were fed for 8 weeks on either LFD or HFD. (B) Mice were injured at day 0. Skin tissues were collected at day 0 (uninjured control) and post-wounded days: 3, 7, 14 and 21, $n=4-6$ mice per time point/per group.

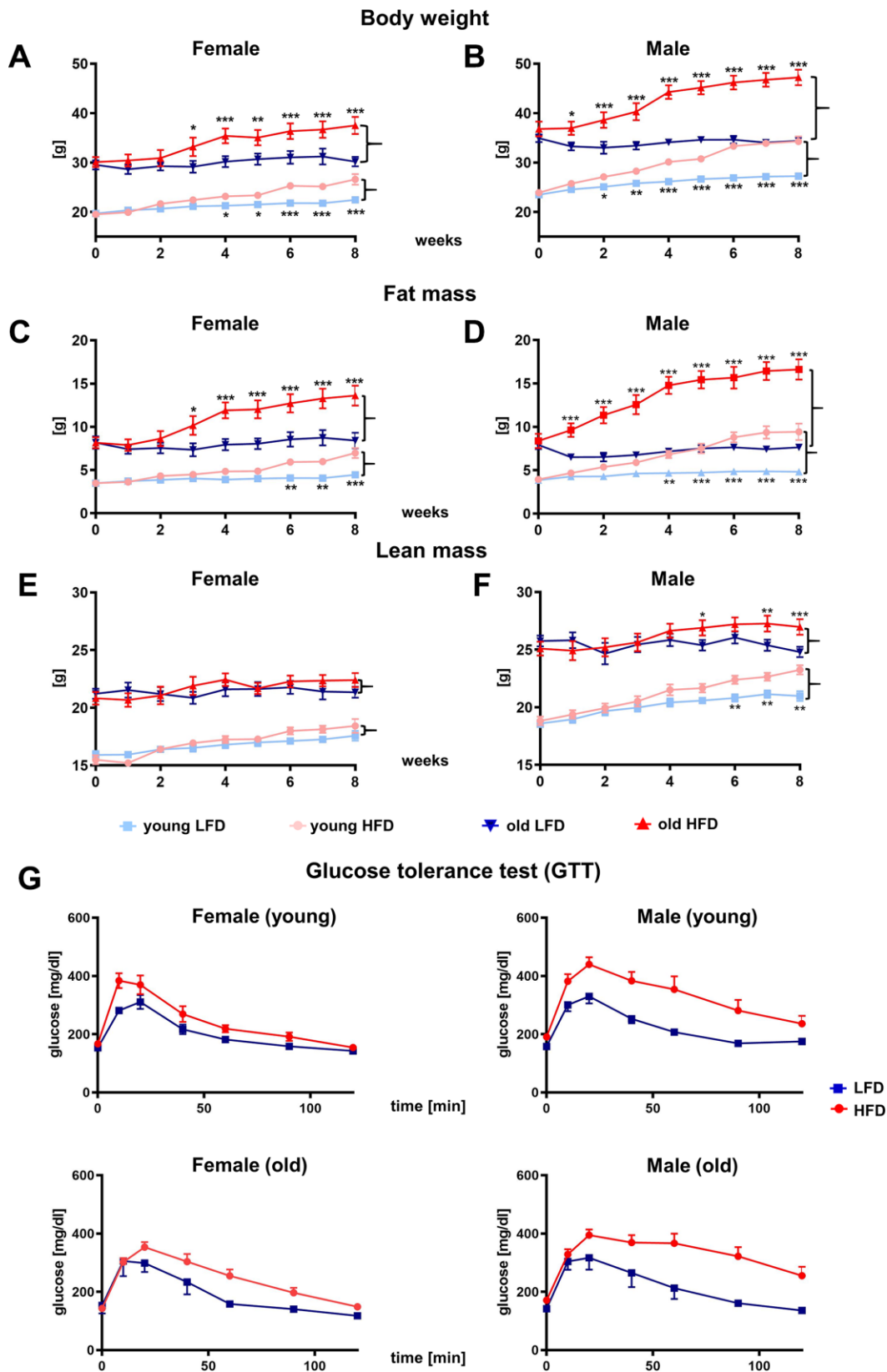


Figure 2. Effect of HFD vs. LFD on body weight (A, B), fat mass (C, D), lean mass (E, F) and glucose tolerance test (G) of B6 female (A, C, E, G) and male (B, D, F, G) mice. Body weight and body composition analyzed by nuclear magnetic resonance (NMR), were measured weekly during 8-week feeding study (n=192 total mice including: n=96 per LFD and n=96 per HFD). Data are the mean \pm SE, asterisks indicate significant differences between animals fed HFD vs LFD * p <0.05, ** p <0.01, *** p <0.001.

The lean mass content did not change substantially during the 8 weeks of feeding study in the young or old females (Figure 2E). Interestingly, for males fed HFD, the lean mass content increased (Figure 2F) indicating that both fat and lean mass contributed to overall body weight gains (Figure 2B; Supplementary Table 7–9). The glucose tolerance test (GTT) performed at the end of the 8th week showed impaired glucose tolerance for HFD mice which was most severe for males (Figure 2G).

Histological analysis of the skin at the end of 8th week of the HFD or LFD program.

Mammalian skin is comprised of three structural layers: epidermis, dermis and subcutaneous white adipose tissue (sWAT), which in rodents is separated from dermis by a thin layer of skeletal muscle known as the *panniculus carnosus* (Figure 3A) [22]. Recent studies have further defined the heterogeneity of the dermis [22–24], pointing out its structural division into papillary and reticular dermis, and dermal white adipose tissue (dWAT) [22, 23] (Figure 3A) identified

as the layer of adipocytes within the reticular dermis of the skin [25].

To analyze the impact of age and diet on the skin of young and old mice after LFD or HFD, we performed histological measurements of the thickness of the epidermis, the dermis, and the dWAT (Figure 3A). The thickness of epidermis demonstrated no significant differences (Figure 3B–3D) among analyzed groups. The measurement of the total dermis thickness (comprising the fibroblast-rich dermis + dWAT) showed increases in mice fed HFD regardless of age (Figure 3B, 3D, Supplementary Table 10). While measurements of the fibroblast-rich dermis alone decreased in old animals, regardless of diet (Figure 3B, 3D; Supplementary Table 13), the increase in dWAT thickness, as a result of HFD in old mice, compensated for the loss of fibroblast rich dermis (Figure 3B, 3D; Supplementary Tables 11, 12). As a consequence, dermal layer was significantly thicker in HFD relative to LFD old mice and comparable to that observed in young, HFD animals (Figure 3B, 3D).

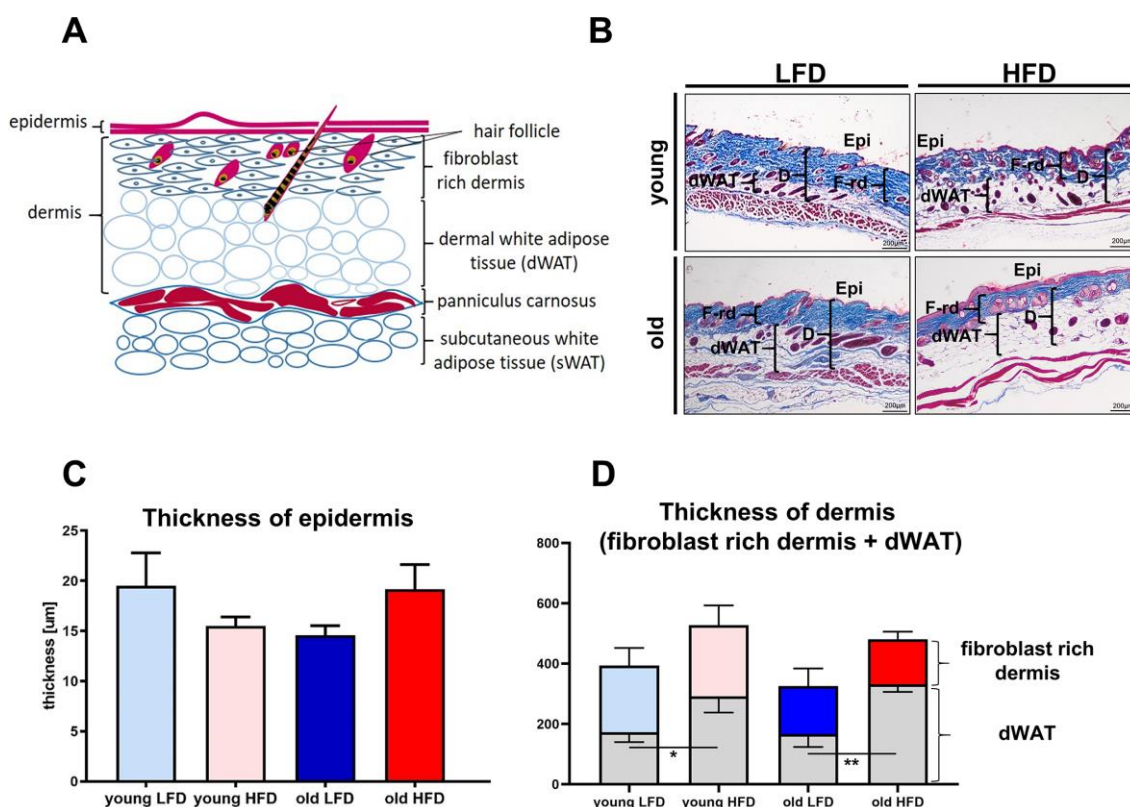


Figure 3. Histological analysis of skin structure and thickness. Scheme of skin structure (A), histological skin sections stained with Masson trichrome and collected from young or old mice fed for a period of 8 weeks LFD or HFD (B), quantification of the skin layers thickness: epidermis (C) and dermis (D). The measurement of skin thickness were performed on histological slides collected from n=24 mice (n=6 per group). Epi - epidermis, dWAT - dermal white adipose tissue, F-rd fibroblast rich dermis; scale bar 200 µm, The bars indicate \pm SE * p <0.05, ** p <0.01.

Age, sex and obesogenic environment differentially modulate skin wound healing parameters

Skin wound healing occurs in overlapping but distinct stages characterized by inflammation, new tissue formation and remodelling [2]. The inflammatory phase is marked by recruitment to the wound of monocytes which subsequently differentiate into macrophages and together with resident cells (keratinocytes at the wound edge, fibroblasts and endothelial cells) produce MCP-1 (monocytes chemoattractant protein 1), a strongly chemotactic cytokine [26] which further mediates the recruitment of monocytes, mast cells and lymphocytes to the site of injury [27]. To assess the inflammatory phase of skin wound healing in different mice cohorts we measured levels of MCP-1 (Figure 4A), the expression of *CD68* mRNA (Figure 4B) and the immunohistochemical localization of macrophage markers: Mac-2 (galectin-3) (Figure 4C) and CD68 (Figure 4D) in skin tissues. The peak of MCP-1 levels was detected at day 3 after wounding (Figure 4A; Supplementary Table 14). Skin injury in old mice evoked the highest levels of MCP-1 that was not affected by diet (LFD vs HFD) (Figure 4A; Supplementary Table 15). *CD68* mRNA analysis revealed the highest levels of expression at post-wounded day 3 which gradually decreased as the skin wound healing process progressed to day 21, falling to levels comparable to those expressed by uninjured skin (Figure 4B, Supplementary Tables 16–19). Interestingly, in contrast to MCP-1, the highest levels of *CD68* mRNA expression were detected for young mice, regardless sex (Figure 4B, Supplementary Table 19). The effect of age and diet on *CD68* mRNA expression was apparent throughout the skin wound healing process (days 3–21) (Supplementary Table 19). Immunohistological localization of Mac-2 positive cells was identified in the epidermal layer, consistent with reports associating Mac-2 epidermal expression with differentiation and maturation of suprabasal keratinocytes [28] in the wound area, in granulation tissues and in the wound margin (Figure 4C). The accumulation of Mac-2 positive cells was observed in skin sections collected at day 3 (Figure 4C) and, to a lesser extent, day 7 (data not shown) after injury. The most robust infiltration of Mac-2 was observed in old HFD mice (Figure 4C). CD68 immunoreactivity was exclusively detected in the dermal part of the skin after wounding (Figure 4D). Positivity for CD68 was observed among cells spread throughout the post wounded dermis, blood vessels and some adipose tissue (Figure 4D). The strongest CD68 reaction product deposition at post wounded day 7 was observed in dWAT tissues localized at wound margin of old HFD mice (Figure 4D).

New tissue formation involves re-epithelialization, angiogenesis, collagen synthesis and ECM production [5]. The aim of the re-epithelialization process is to

cover the wound with the new epithelium. Re-epithelialization involves keratinocyte migration, proliferation and differentiation that is essential for successful cutaneous healing [29, 30]. The analysis of post wounding skin sections stained with: hematoxylin and eosin (H&E) or immunostained for the presence of keratin 16 (Figure 4E), a marker of keratinocytes induction, showed the rate of re-epithelialization measured by percentage of area covered by newly formed epithelium in the wound. The fastest rate of wound re-epithelialization was detected for young, LFD mice: 63.4 % (± 11.5) at day 3 and 100% (± 19.9) at day 7 (Figure 4F). In the remaining groups of mice, the re-epithelialization rate was significantly slower. At day 3rd after injury, young, HFD mice displayed 24.8% (± 10.9), old LFD mice 25.9% (± 14.0) and old HFD mice 35% (± 12.2) of wound coverage. The combined effect of age and diet on re-epithelialization process was detected at day 3rd after wounding (Supplementary Table 20–22). At the day 7, the percentage of re-epithelialization were 86.2% (± 14) for young HFD, 70.5% (± 17.2) old LFD and 78.4% (± 12.2) old HFD mice. By day 14 wounds of all studied cohorts were fully re-epithelialized (Figure 4E, 4F).

The skin wound healing process is tightly coordinated by Mmps enzymes [31]. Mmps function as regulators of each phase of skin wound healing contributing to the inflammatory and remodelling stages through their participation in the degradation of structural extracellular matrix (ECM) components, activation of other Mmps, release of growth factors from the cell membrane or ECM, and the shedding of cell adhesion molecules [32]. The analysis of *Mmp-9* (Figure 5A; Supplementary Tables 23–26) and *Timp-1* (Figure 5C; Supplementary Tables 27–30) revealed a surge in mRNA expression in post-injured skin tissues at day 3 for both males and females followed by their gradual decrease to reach the initial baseline (day 0) levels at day 14. The highest levels of *Mmp-9* mRNA expression at post wounded day 3 was observed for old HFD mice, indicating the impact of two parameters: age and diet (Figure 5A; Supplementary Tables 23–26). The surge in *Mmp-9* expression at day 3 accompanied a burst of *Timp-1* mRNA where *Timp-1* expression was higher for old HFD females relative to males (Figure 5C; Supplementary Tables 27–30). The combined effect of: diet, age and sex was detected at day 3rd after wounding for *Timp-1* mRNA surge (Figure 5C; Supplementary Tables 27–30). The analysis of *Mmp-9* protein expression at day 3 by Western blot confirmed that age and HFD diet stimulated its expression (Figure 5B).

Likewise, *Mmp-13* is a metalloproteinase which regulates skin wound healing through participation in the growth of granulation tissue, organization of

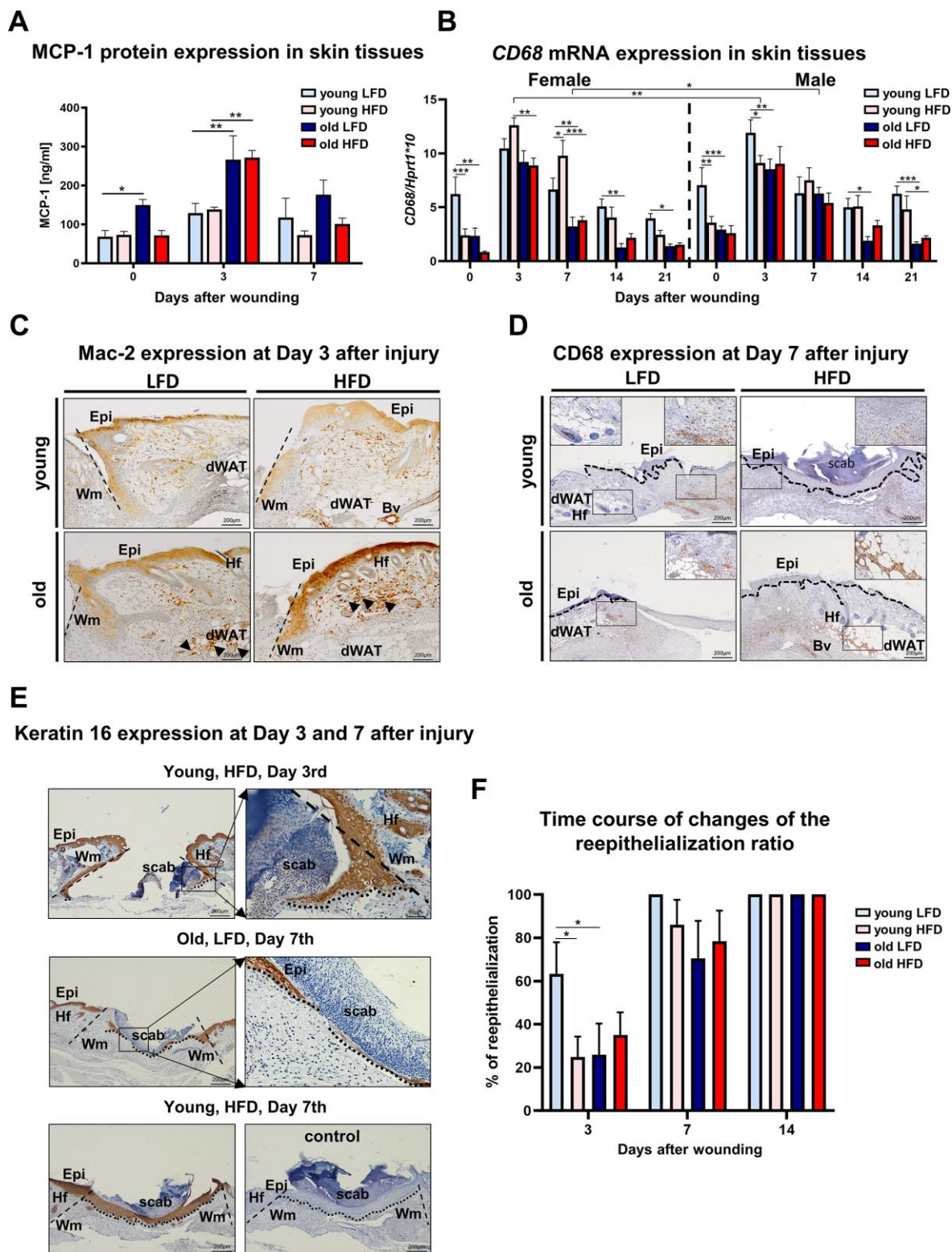


Figure 4. Inflammatory response and histological analysis of re-epithelialization during skin wound healing. (A) MCP-1 protein levels (n=6 skin samples per group); (B) CD68 mRNA expression (n=4-8 skin samples per group); (C) Mac-2 and (D) CD68 immunohistological localization on skin tissues at post-wounded day 3 (C) and day 7 (D). Immunohistochemical detection of keratin 16 (E) and morphometrical analysis (F) of the re-epithelialization process in the skin of old, young, LFD or HFD mice (n = 3-5 mice per group). Epi - epidermis, dWAT - dermal white adipose tissue, Wm - wound margin, Hf - hair follicles; control (E) of immunohistochemical reaction where the primary antibody were omitted. Histological sections were counterstain with hematoxylin. Scale bar (C-E) 200 μ m, insets (C-E) 50 μ m. The bars indicate \bar{x} mean \pm SE * p <0.05, ** p <0.01, *** p <0.001.

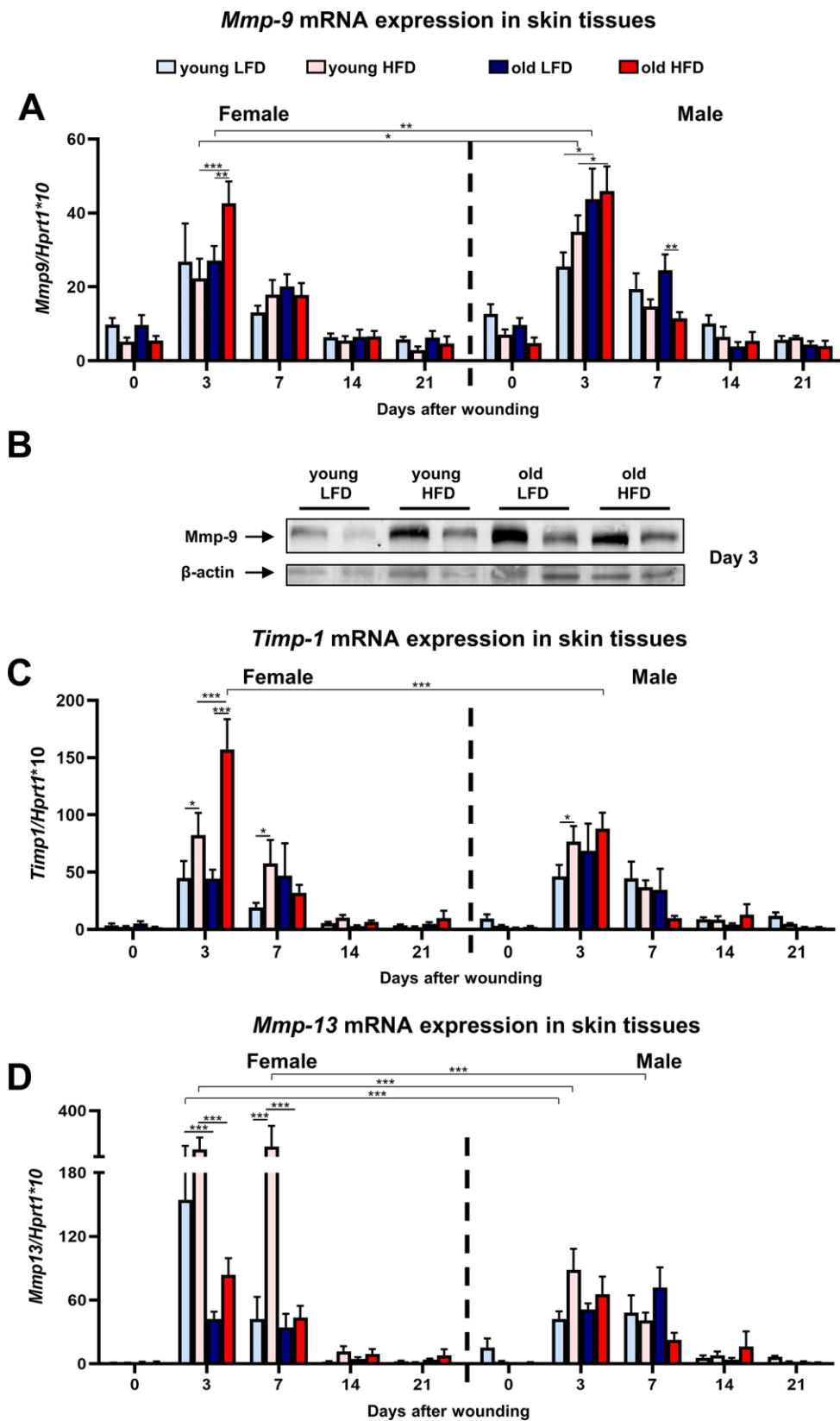


Figure 5. Matrix metalloproteinases and their tissue inhibitor expression during skin wound healing. *Mmp-9* (A), *Timp-1* (C) and *Mmp-13* (D) qRT-PCR mRNA expression in uninjured and post-injured skin tissues collected from female, male, young, old, fed LFD or HFD mice (n=4-8 skin samples per group). Representative Western blot analysis of *Mmp-9* protein expression at post-wounded day 3 (B). The bars indicate $\text{mean} \pm \text{SE}$ * $p < 0.05$, ** $p < 0.01$, *** $p < 0.001$.

myofibroblasts, and the formation of large blood vessels [33]. Similar to *Mmp-9*, peak *Mmp-13* mRNA expression for both females and males was observed in samples collected at day 3 and day 7 after injury (Figure 5D). In contrast to *Mmp-9* (compare Figure 5A), the levels of *Mmp-13* expression at post-injured day 3 and 7 was the highest in young HFD females (Figure 5D; Supplementary Tables 31–34). The two variables: age and sex at day 3 and three variables: age, sex and diet at day 7 act in combination to increase the expression of *Mmp-13* mRNA (Figure 5D; Supplementary Tables 31–34). At post-wounded days 14 and day 21 the expression of *Mmp-13* decreased and approached the baseline levels observed in non-injured skin samples (Figure 5D).

Other factors that affect the skin wound healing process are transforming growth factors beta 1 and 3 (Tgfb-1 and Tgfb-3). Tgfb-1, so called pro-scarring, is one of the first cytokines to elicit inflammatory cell recruitment. The skin wound healing process evokes Tgfb-1 mRNA (Figure 6A) and protein (Figure 6B) expression at post-wounded days 3 and 7. The highest expression of *Tgfb-1* was detected in post-wounded skin from old female mice regardless of diet (Figure 6A). The upregulated *Tgfb-1* gene expression at day 3 ($p < 0.001$), 7 ($p < 0.01$) and 14 ($p < 0.05$) is substantially greater in old HFD females than relative to old HFD males (Figure 6A; Supplementary Tables 35–38). The expression levels of Tgfb-3, a cytokine which plays an important role in wound repair and is presumed to be a potential mediator of scar reduction and skin healing improvement [34], showed the increase for both females and males at post-wounding day 7 (Figure 6C, 6D; Supplementary Tables 39–42). For old HFD females *Tgfb-3* mRNA expression remained elevated at day 14 after injury (Figure 6C) indicating the interaction among: sex (female) and diet (HFD) and post-wounding day (day 14) (Supplementary Table 42).

The restoration of post-injured skin tissues requires collagen biosynthesis and turnover that affect the post-wounded skin quality and outcome. To evaluate collagen content during skin wound healing, we analyzed *collagen 1* and *3* mRNA expression, total collagen content through hydroxyproline assays, and analysis of post-wounded area on Masson's trichrome stained histological sections (Figure 7). The highest levels of *collagen 1* and *3* mRNA in uninjured and post-injured skin tissue samples were detected in young male mice (Figure 7A, 7B, Supplementary Tables 43–50) whereas the expression in aged males was significantly lower and comparable to young and old females (Figure 7A, 7B; Supplementary Tables 43–50). Evidently, age (young) and sex (males) but not diet have the combined effect on the *collagen1* and *3* gene expression in the skin (Figure 7A–7B; Supplementary Table 46–50). Further

analysis of collagen was performed through hydroxyproline content measurement (Figure 7C) and the histological analysis of Masson's Trichrome stained skin sections (Figure 7D, 7E) at post-wounded day 14 and 21. The combined effect of age and diet for hydroxyproline content was detected at day 21 after wounding (Supplementary Table 51). The highest percentage of fibrosis area analyzed in histological sections was quantified for young and low fat diet mice at both day 14 and 21 (Figure 7D, 7E; Supplementary Tables 52, 53).

DISCUSSION

In this study, we have compared the skin wound healing process as a function of age (younger vs older), sex (females vs males) and diet (LFD vs HFD) in C57BL/6 mice in order to determine the cumulative effect of age, sex and diet on cutaneous wound healing.

Overall, our data indicate that although all three components: age, sex and diet affect the quality of the skin before and after wounding, it is age that has the most fundamental impact (Table 1; Supplementary Tables 1–53). First of all, older mice displayed a greater body fat mass accumulation when placed in an obesogenic environment accompanied by an increased reduction in the thickness of the fibroblast-rich dermis in the intact skin. Skin wound healing at particular stages was affected by age in the aspect of Tgfb-1 (days 3, 7 and 21); MCP-1 (day 3), *Mmp-9* (day 3) and *Mmp-13* (days 3, 7) expression and hydroxyproline content (day 21) (Table 1).

The most pronounced cumulative effect was observed for the combination of two parameters: age and sex. The effect predominantly was detected for *collagen 1* and *collagen 3* expression which was extremely high in younger males before injury and throughout the entire process of skin wound healing (Tables 1). Likewise, the combined effect of age and sex impacted *Mmp-13* expression at day 3 and day 7 after injury was significantly higher for younger females. Diet as a single variable modified the thickness of dermis as a result of increased dWAT accumulation in animals fed HFD. In injured skin, diet had an impact on the expression of *Timp-1* (day 3), and *Tgfb-1* (day 14). The combination of age and diet affected the re-epithelialization process and inflammatory response based on *CD68* mRNA expression during the skin wound healing process. Interestingly, the only cumulative effect combining three parameters (age, diet and sex) on the cutaneous wound healing process was displayed exclusively by *Timp-1* mRNA for which high levels were observed for older HFD females at day 3 after wounding (Table 1).

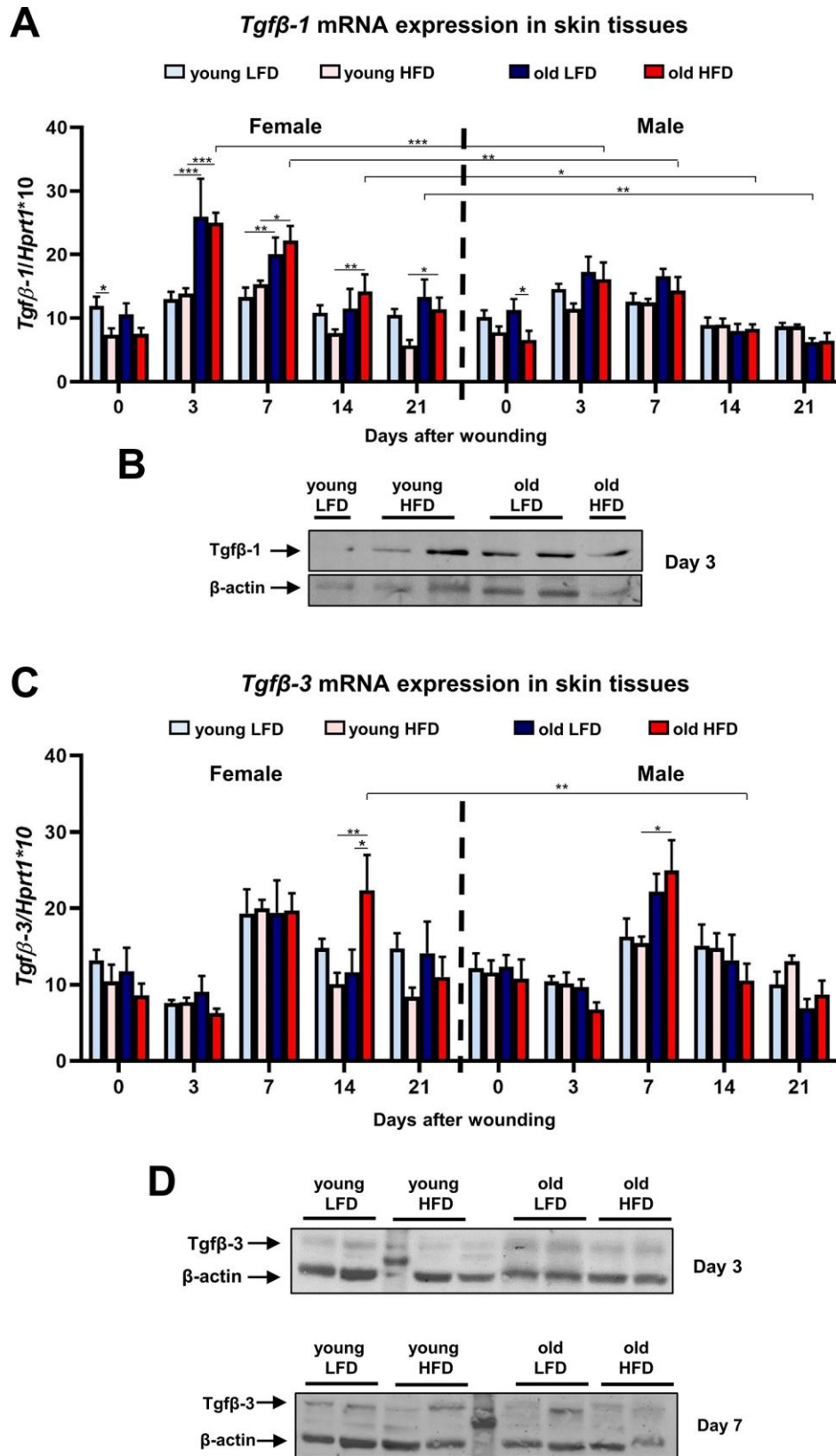


Figure 6. *Tgfb-1* and *Tgfb-3* expression during skin wound healing. qRT-PCR mRNA expression of *Tgfb-1* (A) and *Tgfb-3* (C) in uninjured and post-injured skin tissues collected from female, male, young, old, fed LFD or HFD mice (n=4-8 skin samples per group). Representative Western blot analysis of *Tgfb-1* (B) and *Tgfb-3* (D) protein expression at post-wounded day 3 (B, D) and day 7 (D). The bars indicate \pm SE * p <0.05, ** p <0.01, *** p <0.001.

The fastest rate of wound re-epithelialization was detected in young LFD mice ($63.4\% \pm 11.5$) at day 3rd that was substantially reduced by age ($25.9\% \pm 14.0$) in old LFD mice. Komi-Kuramochi et al. [35], comparing the 6 mm wound closure between young (8-weeks) vs old (35-weeks) mice, found the rate of 50% at post-wounded day 3rd for young mice. Similarly, a comparably fast rate of 3 mm skin wound re-epithelialization by day 3rd for young mice was also detected for C57BL/6 ($79 \pm 14\%$)

[26] and BALB/c (60%) [36] mice regardless genetic background.

The growth factor TGF β comprises three isoforms: TGF β -1, TGF β -2, TGF β -3 which modulate skin and cutaneous wound healing. Two isoforms, TGF β -1 and TGF β -2, attract neutrophils, macrophages and fibroblasts into the wound [37], contribute to the resolution of inflammation [38] and orchestrate re-epithelialization,

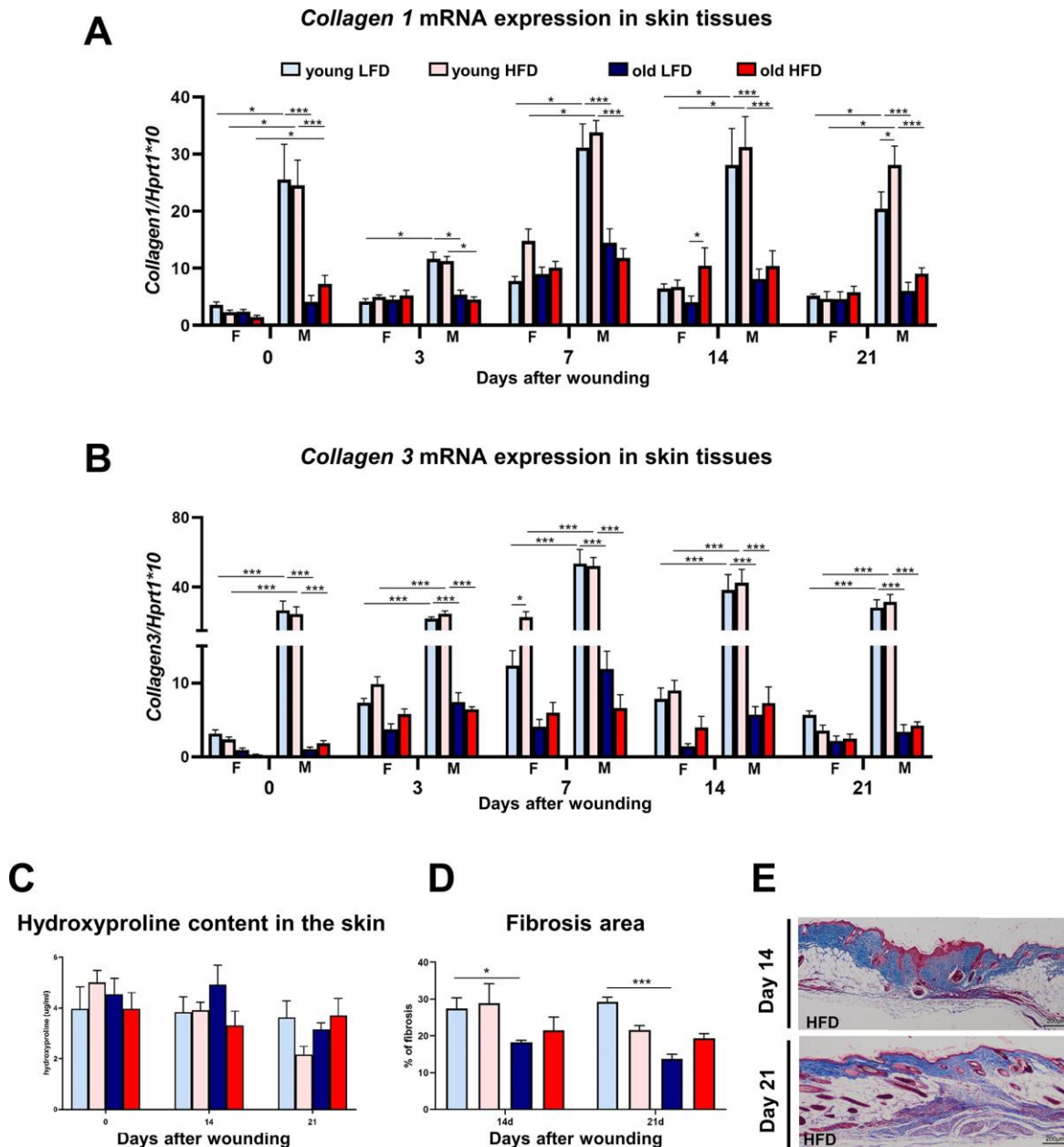


Figure 7. Collagen expression, hydroxyproline content and fibrosis localization in uninjured and post-injured skin. *Collagen 1* (A) and *collagen 3* (B) mRNA expression (n=4-8 skin samples per group) in skin tissues of old, young, male (M), female (F), LFD or HFD mice. Hydroxyproline (C) content (n=4-8 skin samples per group) in skin tissues of old, young, LFD or HFD mice. Histological skin sections stained with Masson trichrome collected from young or old mice fed LFD or HFD at post-injured day 14 and 21 (D), followed by quantification of the fibrosis area (E) (n=3 mice per group). Scale bar (E) 200 μ m. The bars indicate \pm mean \pm SE *p<0.05, **p<0.01, ***p<0.001.

Table 1. The summary of the impact/interactions of age, diet, sex on skin wound healing in young or old, fed the LFD or HFD, females or males B6 mice based on coefficients of model for factors affecting the particular days of the process. Impact/interactions is arranged from the most to the least (1, 2, 3) influential for each factor.

Day of wound healing	Factor/process	Impact/Interactions
	MCP-1	Age
	<i>Mmp-9</i> mRNA expression	1. Age 2. Diet
	<i>Timp-1</i> mRNA expression	1. Diet 2. Sex:diet 3. Age:sex:diet
	<i>Tgfβ-1</i> mRNA expression	1. Age 2. Sex
	<i>Mmp-13</i> mRNA expression	1. Age 2. Age:sex
	<i>Tgfβ-1</i> mRNA expression	1. Age 2. Sex 3. Diet
	<i>Mmp-13</i> mRNA expression	1. Age 2. Sex:diet 3. Age:diet 4. Age:sex
	<i>Tgfβ-1</i> mRNA expression	Diet
	<i>Tgfβ-3</i> mRNA expression	1. Age:sex 2. Sex
	<i>Tgfβ-1</i> mRNA expression	1. Age 2. Age:sex
	Hydroxyproline content	1. Age 2. Age:diet
	<i>CD68</i> mRNA expression	Age:diet
	<i>Collagen 1</i> mRNA expression	Age:sex
	<i>Collagen 3</i> mRNA expression	Age:sex
Days 3 and 7	Re-epithelialization	Age:diet

angiogenesis and granulation tissue formation [39–41]. TGFβ-1 and TGFβ-2 promote fibroblasts differentiation into their active state as myofibroblasts, which regulate connective tissue remodelling by combining production of ECM components with characteristics of contractile smooth muscle cells [42–44]. During the last phase of cutaneous wound repair, remodelling, TGFβ-1 and 2,

together with Mmps and Timps regulate collagen production and degradation, leading to formation of mature scar [1]. While TGFβ-1 and TGFβ-2 promote scar formation, TGFβ-3 acts as anti-fibrotic agent. This cytokine appears early after injury, particularly in the migrating epidermis [45] and is present in the neo-epidermis when re-epithelialization is completed.

Experiments performed by Le et al [46] have shown that although TGF β -3 does not promote re-epithelialization, it is necessary for wound closure. Data obtained by Shah et. al [47] indicates that exogenous addition of neutralizing antibody to TGF β -1 and TGF β -2 reduces scarring. Similar results were obtained after exogenous addition of the TGF β -3 peptide to the wound what caused diminished scarring and improved the architecture of the scar. In our studies, we analyzed the expression profile of Tgf β -1 and Tgf β -3 during cutaneous wound healing. The peak of Tgf β -1 was observed at day 3 and 7 after injury with higher expression in post-wounded skin tissues collected from old mice. Increased levels of Tgf β -1 in aged mice 3 and 7 days after wounding corresponded to an enhanced inflammatory response characterized by a higher level of MCP-1 and increased macrophage infiltration. The expression pattern of Tgf β -3, a potential mediator of scar reduction and skin healing improvement [34], varied significantly depending on age and sex, that was particularly detected at post-wounding day 14. According to our knowledge, this is the first report describing the differential expression profile of Tgf β -3 during skin wound healing process between young and aged mice. Further studies exploring the impact of biological aging on this skin wound biomarker are warranted.

Since Tgf β isoforms are involved in the ECM synthesis by upregulating multiple extracellular matrix genes including collagens, [48], altered levels of circulating Tgf β in old animals can modify the collagen content in the post-injured skin of aged individuals. This is consistent with our results which showed much higher levels of *collagen 1* and *3* mRNA in the skin of young male mice when compared to old mice of matched sex. The analysis of transcriptome data published by Salzer et al. performed on fibroblasts isolated from aged mice further confirms the decreased expression of ECM genes including collagens and glycosaminoglycans [49]. Our studies of collagen content showed differences in total skin concentration between male and female mice, independent of age-related changes. The data collected from multiple experiments suggest that sex steroids may account for the difference in the skin collagen content between males and females. While a series of studies have identified estrogens as enhancers of healing, androgens (testosterone and its metabolite 5 α -dihydrotestosterone (DHT) are postulated to serve as negative regulators of the repair process [50, 51].

The main aim of our study was to define the combined impact of age, sex and diet on skin characteristics. We observed that young females fed HFD showed the levels of *Mmp-13* mRNA expression at post-wounded day 7 that were more than four times higher than in any other groups of animals. While the collagenase *Mmp-13* is almost undetectable in intact mouse skin, its expression is

induced by injury [52]. Two cell types express *Mmp-13* during the early phase of cutaneous healing: keratinocytes at the leading epithelial tongue of neoperidermis [53] and dermal fibroblasts, regulating angiogenesis, proteolysis and myofibroblasts motility during granulation tissue formation [33]. Several studies indicate that adipocytes may serve as another source of *Mmp-13*. Unpublished data by Shih et al. has suggested that epididymal white adipose tissue of mice fed HFD express *Mmp-13* [54]. Data by Ezure and Amano demonstrated that co-culture of enlarged adipocytes with 3T3-L1 fibroblasts significantly increased the mRNA levels of *Mmp-13* [7]. Results published by Schmidt and Horsley indicated that during the proliferative phase of healing, at day 5 after injury, small adipocytes repopulate skin wounds [55]. In our study, high mRNA levels of *Mmp-13* detected in young females fed HFD may originate not only from keratinocytes and fibroblasts but also from repopulating intradermal adipocytes. dWAT, the separate layer presented within reticular dermis, was defined initially by Wojciechowicz et al. [23]. Since then multiple reports have linked the dWAT to the inflammatory response [25], thermogenesis [56, 57], hair cycling [58–61], aging [62, 63], wound healing, fibrosis and scarring [55, 64].

The contribution of dWAT in the skin wound healing process in old HFD mice warrants additional attention. However, accumulating evidence suggests that the presence of dermal adipocytes during cutaneous injury repair may be beneficial for the healing outcome. In current studies, we showed that mice fed HFD displayed thicker dermis than animals fed LFD, regardless of age. The increase in dWAT thickness, as a result of HFD, may have compensated for the age-related loss in fibroblasts-rich dermis. Moreover, in old HFD mice we observed the tendency towards a faster rate of re-epithelialization comparing to old LFD animals. Experiments performed by Schmidt and Horsley [55] confirmed the role of dermal adipocytes in injury repair by showing that the lack of adipocytes in the wound leads to invalid dermal remodelling, skin failure, and reopening of the wound. A recently described feature of skin adipocytes, which may prove crucial for cutaneous healing, is their plasticity, after the exposure to pro-fibrotic agents such as TGF β , characterized by their ability to transition into myofibroblasts (adipocyte-myofibroblasts transition - AMT) [64], and reprogramming of myofibroblasts into adipocytes by activation the BMP2 pathway [60].

In conclusion, our data in a murine model have shown that while diet and sex have considerable impact on skin wound healing, advancing age exerts the most profound effect. These findings suggest that further mechanistic

studies exploring the dynamics between these biological variables in pre-clinical animal models and in human subjects are warranted.

MATERIALS AND METHODS

Animals

The experimental animal procedures performed in these studies were approved by the Ethics Committee of University of Warmia and Mazury (Olsztyn, Poland), No. 22/2015.

The C57BL/6J (B6) mice for the study were generated through colonies established at the animal facility in Institute of Animal Reproduction and Food Research of Polish Academy of Sciences. B6 mice were originally purchased from The Jackson Laboratory (Bar Harbor, ME USA). At the beginning of the experiment, adult (2-3 months), and old (16-18 months), male and female (young; n=24 per group and old; n=16-24 per group) B6 mice were assigned into separated groups fed for a period of 8 weeks either a low fat diet (LFD, 13 kcal% fat; PicoLab Rodent Diet 20 5053) or high fat diet (HFD 59 kcal% fat; TestDiet AIN-76A; LabDiet) (scheme of the experiment Fig. 1). At the end of every week of a diet (LFD or HFD), body mass was measured and body composition was analyzed. Measurements of lean and fat mass were acquired by nuclear magnetic resonance (NMR) using the Minispec LF90II (Bruker Optics). After 8 weeks of diet, glucose tolerance test (GTT) was performed, as described by Anunciado-Koza et al. [65]. Briefly, after fasting for 4 h from 8:00 to 12:00, mice received an intraperitoneal injection of 20% glucose solution (2 g/kg of body weight; Sigma-Aldrich by Merck). Blood glucose levels were determined using a blood glucose monitor (Accu-chek, Roche).

Wounding and collecting skin tissue samples

The day before wounding 5 months old (young) and 21 months old (old) female and male B6 mice, fed LFD or HFD were anesthetized with isoflurane and shaved in the dorsal area. On the following day (day 0), mice were anesthetized with isoflurane and four full-thickness excisional wounds were created on the back of mice using a 4 mm biopsy punch (Miltex). Excised skin samples (4 mm in diameter) were collected, immediately frozen in liquid nitrogen and stored at -80°C until analysis (day 0, uninjured control). B6 mice were sacrificed at days 3, 7, 14 and 21 after wounding. Post-injured skin areas were collected with 8 mm diameter biopsy punches. Tissue samples (n=6-8 per time point) for RNA or protein isolation were immediately frozen in liquid nitrogen and stored in -80°C till further use. Samples for histology were fixed in formalin (n=3-6 per time point).

Masson trichrome staining, histological measurement of the thickness of layers of the skin and analysis of fibrosis

Formalin-fixed sections of uninjured and post-injured skin tissues were deparaffinized by immersion in xylene and then rehydrated. The samples were stained with Trichrome Stain Kit (Modified Masson's) (ScyTek Laboratories, Inc.) For the histological analysis of uninjured skin and measurements of fibrosis in post-injured skin tissues, Image J image analysis software was used (National Institutes of Health (NIH) Image).

Analysis of re-epithelialization

The percentage of re-epithelialization was calculated as previously described by Low et al. [26] and Noguchi et al. [66]. Briefly, the width of wounds and the distance of migrating epithelium were measured on post-injured skin sections (days 3, 7, 14 after injury) stained with hematoxylin and eosin (H&E). The percentage of re-epithelialization was calculated according to the formula: $[\text{length of the extending epidermal tongues}]/[\text{length of the wound}] \times 100\%$ (number of mice n = 3-5 per group, number of measurements n = 3-10 per group) Measurements were performed using ImageJ software (NIH Image).

Monocyte chemotactic protein 1 (MCP-1) detection assay

The ELISA assay for quantitative determination of MCP-1 concentrations in tissue homogenates was performed according to the manufacturer's protocol (Cusabio). Collected skin tissue samples from day 0 (controls), and post-wounded day 3 and day 7 were weighed before further preparation. The samples were homogenized in PBS using 100 mg tissue per 1ml of PBS. The average weight of skin tissue samples varied between 30 and 80 mg therefore an appropriately adjusted volume (between 0.3 to 0.8 ml) of PBS was used for each tissue sample. Tissue homogenates were stored overnight at -20°C. After two freeze and thaw cycles, the homogenates were centrifuged (5 minutes/5000 x g, 2-8°C) and the supernatant was collected, aliquoted and stored at -80°C until performing the assay.

Immunohistochemistry

Formalin-fixed sections of post-injured (day 3 and 7) skin tissues were processed, embedded in paraffin and sectioned. Slides were stained with Masson's trichrome (Trichrome Stain Kit, Abcam) for collagen presence using standard protocol. Immunohistochemical staining for the presence of Mac-2 was performed with anti-LGALS3 (1:2500, mouse monoclonal, LSBio), CD68

(1:200, rabbit polyclonal, Abcam) and Cytokeratin 16 (1:300, rabbit polyclonal, LsBio). Antibody binding was detected with the ABC complex (Vectastain ABC kit, Vector Laboratories, Inc.). In control sections primary antibodies were substituted with non-specific-immunoglobulin G (IgG). Peroxidase activity was revealed using 3,3'-diaminobenzidine (Sigma-Aldrich by Merck) as a substrate. Slides were counterstained with hematoxylin (Sigma-Aldrich by Merck). Sections were visualized using Olympus microscope (BX43), photographed with Olympus digital camera (XC50) and analyzed with Olympus CellSens Software.

RNA isolation and quantitative RT-PCR

Total RNA was extracted from skin samples using TRI Reagent (Sigma-Aldrich by Merck) according to the manufacturer's instructions. Quantity and quality of RNA was verified on NanoDrop 1000 (Thermo Fisher Scientific) and through analysis of agarose gel after electrophoresis. cDNA was synthesized from 500 ng of total RNA using High-Capacity cDNA Reverse Transcription Kit with RNase Inhibitor (Applied Biosystems by Thermo Fisher Scientific). To measure the levels of *Collagen 1*, *Collagen 3*, *Hprt-1*, *Mmp-9*, *Mmp-13*, *Tgfb-1*, *Tgfb-3* and *Timp-1*, mRNA expression, Single Tube TaqMan® Gene Expression Assays (Life Technologies Thermo Fisher Scientific) were used. Amplification was performed using 7900HT Fast Real-Time PCR System under conditions: initial denaturation for 10 min at 95°C, followed by 40 cycles of 15 sec at 95°C and 1 min at 60°C. Each run included standard curve based on aliquots of pooled skin RNA. All samples were analyzed in duplicates. *Hprt-1* was chosen as the most stable housekeeping gene during cutaneous wound healing after analysis described previously [67]. mRNA expression levels were normalized to the reference gene *Hprt-1* and multiplied by 10.

Protein isolation and western blot analysis

Frozen post-injured skin samples collected at day 0, 3 and 7 were homogenized in liquid nitrogen with mortar and pestle in 500 µl of RIPA buffer containing protease inhibitor cocktail (Sigma-Aldrich by Merck), Phosphatase inhibitor cocktail (Sigma-Aldrich by Merck) and Phenylmethanesulfonyl fluoride (PMSF, Sigma-Aldrich by Merck) further sonicated (3 × 20 s, 20 kHz) with Vibro-Cell VCX 130 PB ultrasound sonicator (Sonics). Protein concentration was measured by the infrared (IR)-based protein quantitation method using a Direct Detect® Infrared Spectrometer (Merck) as previously described [68]. Thirty micrograms of proteins were separated on 12% SDS-polyacrylamide gels and transferred onto polyvinylidene difluoride membranes (Merck Millipore). The membranes were

incubated separately with antibodies: anti-Mmp-9 (1:1000, rabbit polyclonal, Merck Millipore), anti-Tgfb-1 (1:500, rabbit polyclonal, Biorbyt), anti-Tgfb-3 (1:200, rabbit polyclonal, Abcam) and anti-β-actin (1:1000 mouse monoclonal, Abcam), followed by fluorescent secondary antibodies IRDye 800 (1:5000 goat anti-rabbit, Rockland) and Cy5.5 (1:10000, goat anti-mouse, Rockland). Bands were visualized using the ChemiDoc™ Touch Imaging System (Bio-Rad) and analyzed using Image Lab Software (Bio-Rad) according to the manufacturer's protocol.

Measurement of hydroxyproline

Collagen assay was prepared as described before [69]. Briefly, 8 mm diameter frozen skin punches, were homogenized in 2 ml of phosphate buffered saline (Sigma-Aldrich by Merck) and stored in 4 °C overnight. The next day, 0.5 ml aliquots were hydrolyzed with 0.25 ml of 6N HCL for 4.5 h at 120 °C. To construct a standard curve hydroxyproline concentrations from 0 to 20 µg/ml were used (Sigma-Aldrich by Merck). 20 µl of each sample and standard curve point was added to a 96 well plate and incubated for 20 min at room temperature with 50 µl of chloramine T solution (282 mg chloramine T, 2 ml n-propanol, 2 ml distilled water and 16 ml citrate acetate buffer [5% citric acid, 7.24% sodium acetate, 3.4% sodium hydroxide and 1.2% glacial acetic acid]). Next, 50 µl of Ehrlich's solution (2.5 g 4-(dimethylamino) benzaldehyde, 9.3 ml n-propanol and 3.9 ml 70% perchloric acid) was added and the plate was incubated for 15 min at 65°C. After cooling down the samples the plate was read at 550 nm on a microplate reader (Multiskan Sky Microplate Spectrophotometer, Thermo Fisher Scientific™).

Statistical analysis

In order to analyze impact of gender, age, diet and timepoint on body parameters linear mixed-effects models were used, in which mice were included as random intercept and mentioned factors and all possible interactions were included as fixed effects. Similarly, mixed-effect models were prepared for skin tissues parameters; however the random effects were insignificant, so linear models were used instead. Based on such models, lsmeans were calculated (least-squared means - means calculated based on model's coefficients) and compared (for mixed-effects models Kenward-Roger method for degrees of freedom was used; Tukey p-value adjustment used where appropriate). Results are presented in tables and plots (lsmeans with standard error). Moreover, optimal models were obtained using backward stepwise method. All calculations were performed in R (ver. 3.5.3) using packages: lme4, lmerTest, emmeans and tidyverse.

AUTHOR CONTRIBUTIONS

Conceptualization: BGK, MK; Data Curation: MK, KW, JB, AKP, SM, BGK; Formal Analysis: MK, KW, JB, BGK; Funding Acquisition: BGK; Investigation: MK, KW, JB, AKP, SM, BGK; Project Administration: BGK, MK; Resources: BGK; Supervision: JMG, BGK; Validation: MK, KW, JB, JMG, BGK Visualization: MK; Writing – Original Draft Preparation: MK; Writing - Review and Editing: MK, KW, JB, JMG, BGK.

ACKNOWLEDGMENTS

We are grateful to dr Anita Jablonska-Kosek for graphical illustration of young, old, LFD and HFD mice.

CONFLICTS OF INTEREST

JMG is the co-owner, co-founder, and an employee of LaCell LLC, Obatala Sciences Inc., and Talaria Antibodies Inc which are for-profit biotechnology companies involved in regenerative medical research and discovery. He is additionally an inventor on multiple patents relating on adipose derived cells and products. All other authors state that they have no conflicts of interest.

FUNDING

The research in the Gawronska-Kozak laboratory is supported by the National Science Centre, Poland (Grant OPUS 14 No.2017/27/B/NZ5/02610) and Internal project of IAR&FR PAS (GW21/2014; Poland).

REFERENCES

1. Singer AJ, Clark RA. Cutaneous wound healing. *N Engl J Med.* 1999; 341:738–46.
<https://doi.org/10.1056/NEJM199909023411006>
PMID:10471461
2. Gurtner GC, Werner S, Barrandon Y, Longaker MT. Wound repair and regeneration. *Nature.* 2008; 453:314–21.
<https://doi.org/10.1038/nature07039>
PMID:18480812
3. Lucas T, Waisman A, Ranjan R, Roes J, Krieg T, Müller W, Roers A, Eming SA. Differential roles of macrophages in diverse phases of skin repair. *J Immunol.* 2010; 184:3964–77.
<https://doi.org/10.4049/jimmunol.0903356>
PMID:20176743
4. Shaw TJ, Martin P. Wound repair at a glance. *J Cell Sci.* 2009; 122:3209–13.

- <https://doi.org/10.1242/jcs.031187> PMID:19726630
5. Guo S, Dipietro LA. Factors affecting wound healing. *J Dent Res.* 2010; 89:219–29.
<https://doi.org/10.1177/0022034509359125>
PMID:20139336
6. Shipman AR, Millington GW. Obesity and the skin. *Br J Dermatol.* 2011; 165:743–50.
<https://doi.org/10.1111/j.1365-2133.2011.10393.x>
PMID:21564065
7. Ezure T, Amano S. Increased subcutaneous adipose tissue impairs dermal function in diet-induced obese mice. *Exp Dermatol.* 2010; 19:878–82.
<https://doi.org/10.1111/j.1600-0625.2009.00970.x>
PMID:19758317
8. Juge-Aubry CE, Henrichot E, Meier CA. Adipose tissue: a regulator of inflammation. *Best Pract Res Clin Endocrinol Metab.* 2005; 19:547–66.
<https://doi.org/10.1016/j.beem.2005.07.009>
PMID:16311216
9. Ouchi N, Parker JL, Lugus JJ, Walsh K. Adipokines in inflammation and metabolic disease. *Nat Rev Immunol.* 2011; 11:85–97.
<https://doi.org/10.1038/nri2921> PMID:21252989
10. Gosain A, DiPietro LA. Aging and wound healing. *World J Surg.* 2004; 28:321–26.
<https://doi.org/10.1007/s00268-003-7397-6>
PMID:14961191
11. Ashcroft GS, Horan MA, Ferguson MW. The effects of ageing on cutaneous wound healing in mammals. *J Anat.* 1995; 187:1–26.
PMID:7591970
12. Keylock KT, Vieira VJ, Wallig MA, DiPietro LA, Schrementi M, Woods JA. Exercise accelerates cutaneous wound healing and decreases wound inflammation in aged mice. *Am J Physiol Regul Integr Comp Physiol.* 2008; 294:R179–84.
<https://doi.org/10.1152/ajpregu.00177.2007>
PMID:18003791
13. Swift ME, Burns AL, Gray KL, DiPietro LA. Age-related alterations in the inflammatory response to dermal injury. *J Invest Dermatol.* 2001; 117:1027–35.
<https://doi.org/10.1046/j.0022-202x.2001.01539.x>
PMID:11710909
14. Swift ME, Kleinman HK, DiPietro LA. Impaired wound repair and delayed angiogenesis in aged mice. *Lab Invest.* 1999; 79:1479–87.
PMID:10616199
15. Ashcroft GS, Horan MA, Ferguson MW. Aging is associated with reduced deposition of specific extracellular matrix components, an upregulation of angiogenesis, and an altered inflammatory response in

- a murine incisional wound healing model. *J Invest Dermatol.* 1997; 108:430–37.
<https://doi.org/10.1111/1523-1747.ep12289705>
PMID:9077470
16. Ashcroft GS, Mills SJ, Ashworth JJ. Ageing and wound healing. *Biogerontology.* 2002; 3:337–45.
<https://doi.org/10.1023/A:1021399228395>
PMID:12510172
17. Ashcroft GS, Herrick SE, Tarnuzzer RW, Horan MA, Schultz GS, Ferguson MW. Human ageing impairs injury-induced in vivo expression of tissue inhibitor of matrix metalloproteinases (TIMP)-1 and -2 proteins and mRNA. *J Pathol.* 1997; 183:169–76.
[https://doi.org/10.1002/\(SICI\)1096-9896\(199710\)183:2<169::AID-PATH915>3.0.CO;2-Q](https://doi.org/10.1002/(SICI)1096-9896(199710)183:2<169::AID-PATH915>3.0.CO;2-Q)
PMID:9390029
18. Sandby-Møller J, Poulsen T, Wulf HC. Epidermal thickness at different body sites: relationship to age, gender, pigmentation, blood content, skin type and smoking habits. *Acta Derm Venereol.* 2003; 83:410–13.
<https://doi.org/10.1080/00015550310015419>
PMID:14690333
19. Shuster S, Black MM, McVitie E. The influence of age and sex on skin thickness, skin collagen and density. *Br J Dermatol.* 1975; 93:639–43.
<https://doi.org/10.1111/j.1365-2133.1975.tb05113.x>
PMID:1220811
20. Azzi L, El-Alfy M, Martel C, Labrie F. Gender differences in mouse skin morphology and specific effects of sex steroids and dehydroepiandrosterone. *J Invest Dermatol.* 2005; 124:22–27.
<https://doi.org/10.1111/j.0022-202X.2004.23545.x>
PMID:15654949
21. Rønø B, Engelholm LH, Lund LR, Hald A. Gender affects skin wound healing in plasminogen deficient mice. *PLoS One.* 2013; 8:e59942.
<https://doi.org/10.1371/journal.pone.0059942>
PMID:23527289
22. Driskell RR, Jahoda CA, Chuong CM, Watt FM, Horsley V. Defining dermal adipose tissue. *Exp Dermatol.* 2014; 23:629–31.
<https://doi.org/10.1111/exd.12450>
PMID:24841073
23. Wojciechowicz K, Gledhill K, Ambler CA, Manning CB, Jahoda CA. Development of the mouse dermal adipose layer occurs independently of subcutaneous adipose tissue and is marked by restricted early expression of FABP4. *PLoS One.* 2013; 8:e59811.
<https://doi.org/10.1371/journal.pone.0059811>
PMID:23555789
24. Driskell RR, Lichtenberger BM, Hoste E, Kretzschmar K, Simons BD, Charalambous M, Ferron SR, Haurat Y, Pavlovic G, Ferguson-Smith AC, Watt FM. Distinct fibroblast lineages determine dermal architecture in skin development and repair. *Nature.* 2013; 504:277–81.
<https://doi.org/10.1038/nature12783>
PMID:24336287
25. Chen SX, Zhang LJ, Gallo RL. Dermal White Adipose Tissue: A Newly Recognized Layer of Skin Innate Defense. *J Invest Dermatol.* 2019; 139:1002–09.
<https://doi.org/10.1016/j.jid.2018.12.031>
PMID:30879642
26. Low QE, Drugea IA, Duffner LA, Quinn DG, Cook DN, Rollins BJ, Kovacs EJ, DiPietro LA. Wound healing in MIP-1alpha(-/-) and MCP-1(-/-) mice. *Am J Pathol.* 2001; 159:457–63.
[https://doi.org/10.1016/S0002-9440\(10\)61717-8](https://doi.org/10.1016/S0002-9440(10)61717-8)
PMID:11485904
27. Gillitzer R, Goebeler M. Chemokines in cutaneous wound healing. *J Leukoc Biol.* 2001; 69:513–21.
PMID:11310836
28. Larsen L, Chen HY, Saegusa J, Liu FT. Galectin-3 and the skin. *J Dermatol Sci.* 2011; 64:85–91.
<https://doi.org/10.1016/j.jdermsci.2011.07.008>
PMID:21889881
29. Aragona M, Dekoninck S, Rulands S, Lenglez S, Mascré G, Simons BD, Blanpain C. Defining stem cell dynamics and migration during wound healing in mouse skin epidermis. *Nat Commun.* 2017; 8:14684.
<https://doi.org/10.1038/ncomms14684>
PMID:28248284
30. Bellavia G, Fasanaro P, Melchionna R, Capogrossi MC, Napolitano M. Transcriptional control of skin reepithelialization. *J Dermatol Sci.* 2014; 73:3–9.
<https://doi.org/10.1016/j.jdermsci.2013.08.007>
PMID:24012494
31. Caley MP, Martins VL, O'Toole EA. Metalloproteinases and Wound Healing. *Adv Wound Care (New Rochelle).* 2015; 4:225–34.
<https://doi.org/10.1089/wound.2014.0581>
PMID:25945285
32. Gill SE, Parks WC. Metalloproteinases and their inhibitors: regulators of wound healing. *Int J Biochem Cell Biol.* 2008; 40:1334–47.
<https://doi.org/10.1016/j.biocel.2007.10.024>
PMID:18083622
33. Toriseva M, Laato M, Carpén O, Ruohonen ST, Savontaus E, Inada M, Krane SM, Kähäri VM. MMP-13 regulates growth of wound granulation tissue and modulates gene expression signatures involved in inflammation, proteolysis, and cell viability. *PLoS One.* 2012; 7:e42596.
<https://doi.org/10.1371/journal.pone.0042596>

PMID:[22880047](#)

34. Occlleston NL, O’Kane S, Laverty HG, Cooper M, Fairlamb D, Mason T, Bush JA, Ferguson MW. Discovery and development of avotermin (recombinant human transforming growth factor beta 3): a new class of prophylactic therapeutic for the improvement of scarring. *Wound Repair Regen*. 2011 (Suppl 1); 19:s38–48.
<https://doi.org/10.1111/j.1524-475X.2011.00711.x>
PMID:[21793965](#)
35. Komi-Kuramochi A, Kawano M, Oda Y, Asada M, Suzuki M, Oki J, Imamura T. Expression of fibroblast growth factors and their receptors during full-thickness skin wound healing in young and aged mice. *J Endocrinol*. 2005; 186:273–89.
<https://doi.org/10.1677/joe.1.06055> PMID:[16079254](#)
36. Chen L, Schrementi ME, Ranzer MJ, Wilgus TA, DiPietro LA. Blockade of mast cell activation reduces cutaneous scar formation. *PLoS One*. 2014; 9:e85226.
<https://doi.org/10.1371/journal.pone.0085226>
PMID:[24465509](#)
37. Denton CP, Khan K, Hoyles RK, Shiwen X, Leoni P, Chen Y, Eastwood M, Abraham DJ. Inducible lineage-specific deletion of TbetaRII in fibroblasts defines a pivotal regulatory role during adult skin wound healing. *J Invest Dermatol*. 2009; 129:194–204.
<https://doi.org/10.1038/jid.2008.171>
PMID:[18563179](#)
38. Finsson KW, McLean S, Di Guglielmo GM, Philip A. Dynamics of Transforming Growth Factor Beta Signaling in Wound Healing and Scarring. *Adv Wound Care (New Rochelle)*. 2013; 2:195–214.
<https://doi.org/10.1089/wound.2013.0429>
PMID:[24527343](#)
39. Gailit J, Welch MP, Clark RA. TGF-beta 1 stimulates expression of keratinocyte integrins during re-epithelialization of cutaneous wounds. *J Invest Dermatol*. 1994; 103:221–27.
<https://doi.org/10.1111/1523-1747.ep12393176>
PMID:[8040614](#)
40. Evrard SM, d’Audigier C, Mauge L, Israël-Biet D, Guerin CL, Bieche I, Kovacic JC, Fischer AM, Gaussem P, Smadja DM. The profibrotic cytokine transforming growth factor-β1 increases endothelial progenitor cell angiogenic properties. *J Thromb Haemost*. 2012; 10:670–79.
<https://doi.org/10.1111/j.1538-7836.2012.04644.x>
PMID:[22284809](#)
41. Thompson HG, Mih JD, Krasieva TB, Tromberg BJ, George SC. Epithelial-derived TGF-beta2 modulates basal and wound-healing subepithelial matrix homeostasis. *Am J Physiol Lung Cell Mol Physiol*. 2006; 291:L1277–85.
<https://doi.org/10.1152/ajplung.00057.2006>
PMID:[16891397](#)
42. Desmoulière A, Geinoz A, Gabbiani F, Gabbiani G. Transforming growth factor-beta 1 induces alpha-smooth muscle actin expression in granulation tissue myofibroblasts and in quiescent and growing cultured fibroblasts. *J Cell Biol*. 1993; 122:103–11.
<https://doi.org/10.1083/jcb.122.1.103>
PMID:[8314838](#)
43. Hinz B, Phan SH, Thannickal VJ, Prunotto M, Desmoulière A, Varga J, De Wever O, Mareel M, Gabbiani G. Recent developments in myofibroblast biology: paradigms for connective tissue remodeling. *Am J Pathol*. 2012; 180:1340–55.
<https://doi.org/10.1016/j.ajpath.2012.02.004>
PMID:[22387320](#)
44. Gilbert RW, Vickaryous MK, Vilorio-Petit AM. Signalling by Transforming Growth Factor Beta Isoforms in Wound Healing and Tissue Regeneration. *J Dev Biol*. 2016; 4:4.
<https://doi.org/10.3390/jdb4020021>
PMID:[29615587](#)
45. Levine JH, Moses HL, Gold LI, Nanney LB. Spatial and temporal patterns of immunoreactive transforming growth factor beta 1, beta 2, and beta 3 during excisional wound repair. *Am J Pathol*. 1993; 143:368–80.
PMID:[8342593](#)
46. Le M, Naridze R, Morrison J, Biggs LC, Rhea L, Schutte BC, Kaartinen V, Dunnwald M. Transforming growth factor Beta 3 is required for excisional wound repair in vivo. *PLoS One*. 2012; 7:e48040.
<https://doi.org/10.1371/journal.pone.0048040>
PMID:[23110169](#)
47. Shah M, Foreman DM, Ferguson MW. Neutralisation of TGF-beta 1 and TGF-beta 2 or exogenous addition of TGF-beta 3 to cutaneous rat wounds reduces scarring. *J Cell Sci*. 1995; 108:985–1002.
PMID:[7542672](#)
48. Quan T, Fisher GJ. Role of Age-Associated Alterations of the Dermal Extracellular Matrix Microenvironment in Human Skin Aging: A Mini-Review. *Gerontology*. 2015; 61:427–34.
<https://doi.org/10.1159/000371708>
PMID:[25660807](#)
49. Salzer MC, Lafzi A, Berenguer-Llargo A, Youssif C, Castellanos A, Solanas G, Peixoto FO, Stephan-Otto Attolini C, Prats N, Aguilera M, Martín-Caballero J, Heyn H, Benitah SA. Identity Noise and Adipogenic Traits Characterize Dermal Fibroblast Aging. *Cell*. 2018; 175:1575–1590.e22.

- <https://doi.org/10.1016/j.cell.2018.10.012>
PMID:[30415840](https://pubmed.ncbi.nlm.nih.gov/30415840/)
50. Gilliver SC, Ruckshanthi JP, Hardman MJ, Nakayama T, Ashcroft GS. Sex dimorphism in wound healing: the roles of sex steroids and macrophage migration inhibitory factor. *Endocrinology*. 2008; 149:5747–57.
<https://doi.org/10.1210/en.2008-0355>
PMID:[18653719](https://pubmed.ncbi.nlm.nih.gov/18653719/)
51. Hardman MJ, Ashcroft GS. Estrogen, not intrinsic aging, is the major regulator of delayed human wound healing in the elderly. *Genome Biol*. 2008; 9:R80.
<https://doi.org/10.1186/gb-2008-9-5-r80>
PMID:[18477406](https://pubmed.ncbi.nlm.nih.gov/18477406/)
52. Toriseva M, Kähäri VM. Proteinases in cutaneous wound healing. *Cell Mol Life Sci*. 2009; 66:203–24.
<https://doi.org/10.1007/s00018-008-8388-4>
PMID:[18810321](https://pubmed.ncbi.nlm.nih.gov/18810321/)
53. Hartenstein B, Dittrich BT, Stickens D, Heyer B, Vu TH, Teurich S, Schorpp-Kistner M, Werb Z, Angel P. Epidermal development and wound healing in matrix metalloproteinase 13-deficient mice. *J Invest Dermatol*. 2006; 126:486–96.
<https://doi.org/10.1038/sj.jid.5700084>
PMID:[16374453](https://pubmed.ncbi.nlm.nih.gov/16374453/)
54. Shih CL, Ajuwon KM. Inhibition of MMP-13 prevents diet-induced obesity in mice and suppresses adipogenesis in 3T3-L1 preadipocytes. *Mol Biol Rep*. 2015; 42:1225–32.
<https://doi.org/10.1007/s11033-015-3861-2>
PMID:[25682268](https://pubmed.ncbi.nlm.nih.gov/25682268/)
55. Schmidt BA, Horsley V. Intradermal adipocytes mediate fibroblast recruitment during skin wound healing. *Development*. 2013; 140:1517–27.
<https://doi.org/10.1242/dev.087593>
PMID:[23482487](https://pubmed.ncbi.nlm.nih.gov/23482487/)
56. Kasza I, Suh Y, Wollny D, Clark RJ, Roopra A, Colman RJ, MacDougald OA, Shedd TA, Nelson DW, Yen MI, Yen CL, Alexander CM. Syndecan-1 is required to maintain intradermal fat and prevent cold stress. *PLoS Genet*. 2014; 10:e1004514.
<https://doi.org/10.1371/journal.pgen.1004514>
PMID:[25101993](https://pubmed.ncbi.nlm.nih.gov/25101993/)
57. Alexander CM, Kasza I, Yen CL, Reeder SB, Hernando D, Gallo RL, Jahoda CA, Horsley V, MacDougald OA. Dermal white adipose tissue: a new component of the thermogenic response. *J Lipid Res*. 2015; 56:2061–69.
<https://doi.org/10.1194/jlr.R062893>
PMID:[26405076](https://pubmed.ncbi.nlm.nih.gov/26405076/)
58. Festa E, Fretz J, Berry R, Schmidt B, Rodeheffer M, Horowitz M, Horsley V. Adipocyte lineage cells contribute to the skin stem cell niche to drive hair cycling. *Cell*. 2011; 146:761–71.
<https://doi.org/10.1016/j.cell.2011.07.019>
PMID:[21884937](https://pubmed.ncbi.nlm.nih.gov/21884937/)
59. Kruglikov IL, Scherer PE. Dermal adipocytes and hair cycling: is spatial heterogeneity a characteristic feature of the dermal adipose tissue depot? *Exp Dermatol*. 2016; 25:258–62.
<https://doi.org/10.1111/exd.12941>
PMID:[26781768](https://pubmed.ncbi.nlm.nih.gov/26781768/)
60. Plikus MV, Mayer JA, de la Cruz D, Baker RE, Maini PK, Maxson R, Chuong CM. Cyclic dermal BMP signalling regulates stem cell activation during hair regeneration. *Nature*. 2008; 451:340–44.
<https://doi.org/10.1038/nature06457>
PMID:[18202659](https://pubmed.ncbi.nlm.nih.gov/18202659/)
61. Schmidt B, Horsley V. Unravelling hair follicle-adipocyte communication. *Exp Dermatol*. 2012; 21:827–30.
<https://doi.org/10.1111/exd.12001>
PMID:[23163647](https://pubmed.ncbi.nlm.nih.gov/23163647/)
62. Wollina U, Wetzker R, Abdel-Naser MB, Kruglikov IL. Role of adipose tissue in facial aging. *Clin Interv Aging*. 2017; 12:2069–76.
<https://doi.org/10.2147/CIA.S151599>
PMID:[29255352](https://pubmed.ncbi.nlm.nih.gov/29255352/)
63. Zhang LJ, Chen SX, Guerrero-Juarez CF, Li F, Tong Y, Liang Y, Liggins M, Chen X, Chen H, Li M, Hata T, Zheng Y, Plikus MV, Gallo RL. Age-Related Loss of Innate Immune Antimicrobial Function of Dermal Fat Is Mediated by Transforming Growth Factor Beta. *Immunity*. 2019; 50:121–136.e5.
<https://doi.org/10.1016/j.immuni.2018.11.003>
PMID:[30594464](https://pubmed.ncbi.nlm.nih.gov/30594464/)
64. Marangoni RG, Korman BD, Wei J, Wood TA, Graham LV, Whitfield ML, Scherer PE, Tourtellotte WG, Varga J. Myofibroblasts in murine cutaneous fibrosis originate from adiponectin-positive intradermal progenitors. *Arthritis Rheumatol*. 2015; 67:1062–73.
<https://doi.org/10.1002/art.38990>
PMID:[25504959](https://pubmed.ncbi.nlm.nih.gov/25504959/)
65. Anunciado-Koza R, Ukropec J, Koza RA, Kozak LP. Inactivation of UCP1 and the glycerol phosphate cycle synergistically increases energy expenditure to resist diet-induced obesity. *J Biol Chem*. 2008; 283:27688–97.
<https://doi.org/10.1074/jbc.M804268200>
PMID:[18678870](https://pubmed.ncbi.nlm.nih.gov/18678870/)
66. Noguchi F, Nakajima T, Inui S, Reddy JK, Itami S. Alteration of skin wound healing in keratinocyte-specific mediator complex subunit 1 null mice. *PLoS One*. 2014; 9:e102271.
<https://doi.org/10.1371/journal.pone.0102271>
PMID:[25122137](https://pubmed.ncbi.nlm.nih.gov/25122137/)
67. Kopcewicz MM, Kur-Piotrowska A, Bukowska J, Gimble JM, Gawronska-Kozak B. Foxn1 and Mmp-9 expression

in intact skin and during excisional wound repair in young, adult, and old C57Bl/6 mice. *Wound Repair Regen.* 2017; 25:248–59.

<https://doi.org/10.1111/wrr.12524>

PMID:[28371152](https://pubmed.ncbi.nlm.nih.gov/28371152/)

68. Bukowska J, Kopcewicz M, Kur-Piotrowska A, Szostek-Mioduchowska AZ, Walendzik K, Gawronska-Kozak B. Effect of TGF β 1, TGF β 3 and keratinocyte conditioned media on functional characteristics of dermal fibroblasts derived from reparative (Balb/c) and regenerative (Foxn1 deficient; nude) mouse models.

Cell Tissue Res. 2018; 374:149–63.

<https://doi.org/10.1007/s00441-018-2836-8>

PMID:[29637306](https://pubmed.ncbi.nlm.nih.gov/29637306/)

69. Gawronska-Kozak B. Scarless skin wound healing in FOXN1 deficient (nude) mice is associated with distinctive matrix metalloproteinase expression. *Matrix Biol.* 2011; 30:290–300.

<https://doi.org/10.1016/j.matbio.2011.04.004>

PMID:[21539913](https://pubmed.ncbi.nlm.nih.gov/21539913/)

SUPPLEMENTARY MATERIALS

Supplementary Tables

Statistically significant differences for body weight by diet, sex and age

Supplementary Table 1. Comparisons by diet for body weight.

diet	age	sex	timepoint	lsmean	lower.CL	upper.CL	SE	df	p.value
HFD	old	female	W3	33.6	31.4	35.8	1.1	873.4	0.013
LFD	old	female	W3	29.4	26.8	32.0	1.3	1005.6	
HFD	old	female	W4	35.6	34.0	37.3	0.9	581.6	<0.001
LFD	old	female	W4	30.5	28.3	32.6	1.1	873.3	
HFD	old	female	W5	35.3	33.6	37.0	0.9	616.8	0.001
LFD	old	female	W5	31.0	28.8	33.1	1.1	873.3	
HFD	old	female	W6	36.6	34.9	38.4	0.9	616.8	<0.001
LFD	old	female	W6	31.3	29.2	33.5	1.1	873.3	
HFD	old	female	W7	36.9	35.2	38.6	0.9	616.8	<0.001
LFD	old	female	W7	31.2	28.8	33.6	1.2	964.2	
HFD	old	female	W8	37.7	36.0	39.4	0.9	581.6	<0.001
LFD	old	female	W8	30.7	28.8	32.6	1.0	736.8	
HFD	old	male	W1	37.4	35.4	39.3	1.0	781.0	0.011
LFD	old	male	W1	33.9	31.8	35.9	1.0	826.8	
HFD	old	male	W2	39.0	37.1	41.0	1.0	781.0	<0.001
LFD	old	male	W2	33.7	31.7	35.8	1.0	826.8	
HFD	old	male	W3	40.7	38.8	42.7	1.0	781.0	<0.001
LFD	old	male	W3	34.0	31.9	36.1	1.0	826.8	
HFD	old	male	W4	44.3	42.8	45.8	0.8	440.0	<0.001
LFD	old	male	W4	34.3	32.6	36.0	0.9	581.6	
HFD	old	male	W5	45.2	43.7	46.7	0.8	440.0	<0.001
LFD	old	male	W5	34.5	32.6	36.4	1.0	736.8	
HFD	old	male	W6	46.2	44.7	47.7	0.8	440.0	<0.001
LFD	old	male	W6	34.6	32.7	36.4	1.0	736.8	
HFD	old	male	W7	46.8	45.3	48.3	0.8	464.3	<0.001
LFD	old	male	W7	34.3	32.6	35.9	0.9	581.6	
HFD	old	male	W8	47.4	45.8	48.9	0.8	490.5	<0.001
LFD	old	male	W8	34.6	32.9	36.3	0.9	581.6	
HFD	young	female	W4	23.2	21.7	24.7	0.8	440.0	0.039
LFD	young	female	W4	21.2	19.8	22.7	0.7	400.4	
HFD	young	female	W5	23.5	22.0	25.0	0.8	440.0	0.036
LFD	young	female	W5	21.5	20.1	22.9	0.7	400.4	
HFD	young	female	W6	25.3	23.8	26.8	0.8	440.0	<0.001
LFD	young	female	W6	21.8	20.3	23.2	0.7	400.4	
HFD	young	female	W7	25.2	23.7	26.7	0.8	440.0	<0.001
LFD	young	female	W7	21.7	20.3	23.1	0.7	400.4	
HFD	young	female	W8	26.7	24.9	28.6	0.9	695.1	<0.001
LFD	young	female	W8	22.7	21.0	24.4	0.9	616.8	
HFD	young	male	W2	27.2	25.6	28.9	0.8	548.8	0.029
LFD	young	male	W2	25.0	23.4	26.5	0.8	464.1	

HFD	young	male	W3	28.4	26.7	30.0	0.8	548.8	0.009
LFD	young	male	W3	25.7	24.2	27.2	0.8	464.1	
HFD	young	male	W4	30.2	28.6	31.9	0.8	548.8	<0.001
LFD	young	male	W4	26.0	24.5	27.5	0.8	464.1	
HFD	young	male	W5	30.9	29.2	32.5	0.8	548.8	<0.001
LFD	young	male	W5	26.5	25.0	28.0	0.8	464.1	
HFD	young	male	W6	33.4	31.8	35.1	0.8	548.8	<0.001
LFD	young	male	W6	26.8	25.2	28.3	0.8	464.1	
HFD	young	male	W7	34.0	32.4	35.6	0.8	548.8	<0.001
LFD	young	male	W7	27.0	25.5	28.6	0.8	464.1	
HFD	young	male	W8	34.5	32.4	36.6	1.0	826.9	<0.001
LFD	young	male	W8	27.2	25.2	29.1	1.0	781.3	

Supplementary Table 2. Comparisons by sex for body weight.

sex	diet	age	timepoint	lsmean	lower.CL	upper.CL	SE	df	p.value
female	HFD	old	W0	30.3	28.6	32.0	0.9	581.6	<0.001
male	HFD	old	W0	36.8	35.3	38.3	0.8	440.0	
female	HFD	old	W1	30.8	28.7	33.0	1.1	873.4	<0.001
male	HFD	old	W1	37.4	35.4	39.3	1.0	781.0	
female	HFD	old	W2	31.4	29.2	33.7	1.2	919.6	<0.001
male	HFD	old	W2	39.0	37.1	41.0	1.0	781.0	
female	HFD	old	W3	33.6	31.4	35.8	1.1	873.4	<0.001
male	HFD	old	W3	40.7	38.8	42.7	1.0	781.0	
female	HFD	old	W4	35.6	34.0	37.3	0.9	581.6	<0.001
male	HFD	old	W4	44.3	42.8	45.8	0.8	440.0	
female	HFD	old	W5	35.3	33.6	37.0	0.9	616.8	<0.001
male	HFD	old	W5	45.2	43.7	46.7	0.8	440.0	
female	HFD	old	W6	36.6	34.9	38.4	0.9	616.8	<0.001
male	HFD	old	W6	46.2	44.7	47.7	0.8	440.0	
female	HFD	old	W7	36.9	35.2	38.6	0.9	616.8	<0.001
male	HFD	old	W7	46.8	45.3	48.3	0.8	464.3	
female	HFD	old	W8	37.7	36.0	39.4	0.9	581.6	<0.001
male	HFD	old	W8	47.4	45.8	48.9	0.8	490.5	
female	LFD	old	W0	30.0	28.1	31.9	1.0	736.8	<0.001
male	LFD	old	W0	35.2	33.5	36.8	0.9	581.6	
female	LFD	old	W1	29.2	27.0	31.4	1.1	873.3	0.001
male	LFD	old	W1	33.9	31.8	35.9	1.0	826.8	
female	LFD	old	W2	29.8	27.7	32.0	1.1	873.3	0.007
male	LFD	old	W2	33.7	31.7	35.8	1.0	826.8	
female	LFD	old	W3	29.4	26.8	32.0	1.3	1005.6	0.005
male	LFD	old	W3	34.0	31.9	36.1	1.0	826.8	
female	LFD	old	W4	30.5	28.3	32.6	1.1	873.3	0.003
male	LFD	old	W4	34.3	32.6	36.0	0.9	581.6	
female	LFD	old	W5	31.0	28.8	33.1	1.1	873.3	0.010
male	LFD	old	W5	34.5	32.6	36.4	1.0	736.8	
female	LFD	old	W6	31.3	29.2	33.5	1.1	873.3	0.020
male	LFD	old	W6	34.6	32.7	36.4	1.0	736.8	

female	LFD	old	W7	31.2	28.8	33.6	1.2	964.2	0.033
male	LFD	old	W7	34.3	32.6	35.9	0.9	581.6	
female	LFD	old	W8	30.7	28.8	32.6	1.0	736.8	0.001
male	LFD	old	W8	34.6	32.9	36.3	0.9	581.6	
female	HFD	young	W0	19.5	18.0	21.0	0.8	440.0	<0.001
male	HFD	young	W0	24.0	22.4	25.6	0.8	548.8	
female	HFD	young	W1	19.9	18.5	21.4	0.8	440.0	<0.001
male	HFD	young	W1	25.9	24.2	27.5	0.8	548.8	
female	HFD	young	W2	21.7	20.2	23.2	0.8	440.0	<0.001
male	HFD	young	W2	27.2	25.6	28.9	0.8	548.8	
female	HFD	young	W3	22.4	20.9	23.9	0.8	440.0	<0.001
male	HFD	young	W3	28.4	26.7	30.0	0.8	548.8	
female	HFD	young	W4	23.2	21.7	24.7	0.8	440.0	<0.001
male	HFD	young	W4	30.2	28.6	31.9	0.8	548.8	
female	HFD	young	W5	23.5	22.0	25.0	0.8	440.0	<0.001
male	HFD	young	W5	30.9	29.2	32.5	0.8	548.8	
female	HFD	young	W6	25.3	23.8	26.8	0.8	440.0	<0.001
male	HFD	young	W6	33.4	31.8	35.1	0.8	548.8	
female	HFD	young	W7	25.2	23.7	26.7	0.8	440.0	<0.001
male	HFD	young	W7	34.0	32.4	35.6	0.8	548.8	
female	HFD	young	W8	26.7	24.9	28.6	0.9	695.1	<0.001
male	HFD	young	W8	34.5	32.4	36.6	1.0	826.9	
female	LFD	young	W0	19.7	18.2	21.1	0.7	400.4	<0.001
male	LFD	young	W0	23.4	21.8	24.9	0.8	464.1	
female	LFD	young	W1	20.3	18.9	21.7	0.7	400.4	<0.001
male	LFD	young	W1	24.4	22.9	25.9	0.8	464.1	
female	LFD	young	W2	20.6	19.2	22.0	0.7	400.4	<0.001
male	LFD	young	W2	25.0	23.4	26.5	0.8	464.1	
female	LFD	young	W3	21.0	19.6	22.5	0.7	400.4	<0.001
male	LFD	young	W3	25.7	24.2	27.2	0.8	464.1	
female	LFD	young	W4	21.2	19.8	22.7	0.7	400.4	<0.001
male	LFD	young	W4	26.0	24.5	27.5	0.8	464.1	
female	LFD	young	W5	21.5	20.1	22.9	0.7	400.4	<0.001
male	LFD	young	W5	26.5	25.0	28.0	0.8	464.1	
female	LFD	young	W6	21.8	20.3	23.2	0.7	400.4	<0.001
male	LFD	young	W6	26.8	25.2	28.3	0.8	464.1	
female	LFD	young	W7	21.7	20.3	23.1	0.7	400.4	<0.001
male	LFD	young	W7	27.0	25.5	28.6	0.8	464.1	
female	LFD	young	W8	22.7	21.0	24.4	0.9	616.8	<0.001
male	LFD	young	W8	27.2	25.2	29.1	1.0	781.3	

Supplementary Table 3. Comparisons by age for body weight.

age	diet	sex	timepoint	lsmean	lower.CL	upper.CL	SE	df	p.value
old	HFD	female	W0	30.3	28.6	32.0	0.9	581.6	<0.001
young	HFD	female	W0	19.5	18.0	21.0	0.8	440.0	
old	HFD	female	W1	30.8	28.7	33.0	1.1	873.4	<0.001
young	HFD	female	W1	19.9	18.5	21.4	0.8	440.0	

old	HFD	female	W2	31.4	29.2	33.7	1.2	919.6	<0.001
young	HFD	female	W2	21.7	20.2	23.2	0.8	440.0	
old	HFD	female	W3	33.6	31.4	35.8	1.1	873.4	<0.001
young	HFD	female	W3	22.4	20.9	23.9	0.8	440.0	
old	HFD	female	W4	35.6	34.0	37.3	0.9	581.6	<0.001
young	HFD	female	W4	23.2	21.7	24.7	0.8	440.0	
old	HFD	female	W5	35.3	33.6	37.0	0.9	616.8	<0.001
young	HFD	female	W5	23.5	22.0	25.0	0.8	440.0	
old	HFD	female	W6	36.6	34.9	38.4	0.9	616.8	<0.001
young	HFD	female	W6	25.3	23.8	26.8	0.8	440.0	
old	HFD	female	W7	36.9	35.2	38.6	0.9	616.8	<0.001
young	HFD	female	W7	25.2	23.7	26.7	0.8	440.0	
old	HFD	female	W8	37.7	36.0	39.4	0.9	581.6	<0.001
young	HFD	female	W8	26.7	24.9	28.6	0.9	695.1	
old	LFD	female	W0	30.0	28.1	31.9	1.0	736.8	<0.001
young	LFD	female	W0	19.7	18.2	21.1	0.7	400.4	
old	LFD	female	W1	29.2	27.0	31.4	1.1	873.3	<0.001
young	LFD	female	W1	20.3	18.9	21.7	0.7	400.4	
old	LFD	female	W2	29.8	27.7	32.0	1.1	873.3	<0.001
young	LFD	female	W2	20.6	19.2	22.0	0.7	400.4	
old	LFD	female	W3	29.4	26.8	32.0	1.3	1005.6	<0.001
young	LFD	female	W3	21.0	19.6	22.5	0.7	400.4	
old	LFD	female	W4	30.5	28.3	32.6	1.1	873.3	<0.001
young	LFD	female	W4	21.2	19.8	22.7	0.7	400.4	
old	LFD	female	W5	31.0	28.8	33.1	1.1	873.3	<0.001
young	LFD	female	W5	21.5	20.1	22.9	0.7	400.4	
old	LFD	female	W6	31.3	29.2	33.5	1.1	873.3	<0.001
young	LFD	female	W6	21.8	20.3	23.2	0.7	400.4	
old	LFD	female	W7	31.2	28.8	33.6	1.2	964.2	<0.001
young	LFD	female	W7	21.7	20.3	23.1	0.7	400.4	
old	LFD	female	W8	30.7	28.8	32.6	1.0	736.8	<0.001
young	LFD	female	W8	22.7	21.0	24.4	0.9	616.8	
old	HFD	male	W0	36.8	35.3	38.3	0.8	440.0	<0.001
young	HFD	male	W0	24.0	22.4	25.6	0.8	548.8	
old	HFD	male	W1	37.4	35.4	39.3	1.0	781.0	<0.001
young	HFD	male	W1	25.9	24.2	27.5	0.8	548.8	
old	HFD	male	W2	39.0	37.1	41.0	1.0	781.0	<0.001
young	HFD	male	W2	27.2	25.6	28.9	0.8	548.8	
old	HFD	male	W3	40.7	38.8	42.7	1.0	781.0	<0.001
young	HFD	male	W3	28.4	26.7	30.0	0.8	548.8	
old	HFD	male	W4	44.3	42.8	45.8	0.8	440.0	<0.001
young	HFD	male	W4	30.2	28.6	31.9	0.8	548.8	
old	HFD	male	W5	45.2	43.7	46.7	0.8	440.0	<0.001
young	HFD	male	W5	30.9	29.2	32.5	0.8	548.8	
old	HFD	male	W6	46.2	44.7	47.7	0.8	440.0	<0.001
young	HFD	male	W6	33.4	31.8	35.1	0.8	548.8	
old	HFD	male	W7	46.8	45.3	48.3	0.8	464.3	<0.001
young	HFD	male	W7	34.0	32.4	35.6	0.8	548.8	

old	HFD	male	W8	47.4	45.8	48.9	0.8	490.5	<0.001
young	HFD	male	W8	34.5	32.4	36.6	1.0	826.9	
old	LFD	male	W0	35.2	33.5	36.8	0.9	581.6	<0.001
young	LFD	male	W0	23.4	21.8	24.9	0.8	464.1	
old	LFD	male	W1	33.9	31.8	35.9	1.0	826.8	<0.001
young	LFD	male	W1	24.4	22.9	25.9	0.8	464.1	
old	LFD	male	W2	33.7	31.7	35.8	1.0	826.8	<0.001
young	LFD	male	W2	25.0	23.4	26.5	0.8	464.1	
old	LFD	male	W3	34.0	31.9	36.1	1.0	826.8	<0.001
young	LFD	male	W3	25.7	24.2	27.2	0.8	464.1	
old	LFD	male	W4	34.3	32.6	36.0	0.9	581.6	<0.001
young	LFD	male	W4	26.0	24.5	27.5	0.8	464.1	
old	LFD	male	W5	34.5	32.6	36.4	1.0	736.8	<0.001
young	LFD	male	W5	26.5	25.0	28.0	0.8	464.1	
old	LFD	male	W6	34.6	32.7	36.4	1.0	736.8	<0.001
young	LFD	male	W6	26.8	25.2	28.3	0.8	464.1	
old	LFD	male	W7	34.3	32.6	35.9	0.9	581.6	<0.001
young	LFD	male	W7	27.0	25.5	28.6	0.8	464.1	
old	LFD	male	W8	34.6	32.9	36.3	0.9	581.6	<0.001
young	LFD	male	W8	27.2	25.2	29.1	1.0	781.3	

Statistically significant differences for fat mass by diet, sex and age

Supplementary Table 4. Comparisons by diet for fat mass.

diet	age	sex	timepoint	lsmean	lower.CL	upper.CL	SE	df	p.value
HFD	old	female	W3	10.3	9.0	11.7	0.7	1024.1	0.014
LFD	old	female	W3	7.9	6.4	9.4	0.8	1049.8	
HFD	old	female	W4	11.9	10.9	13.0	0.5	893.9	<0.001
LFD	old	female	W4	8.1	6.8	9.4	0.7	1024.1	
HFD	old	female	W5	12.1	11.0	13.1	0.5	915.0	<0.001
LFD	old	female	W5	8.2	6.9	9.5	0.7	1024.1	
HFD	old	female	W6	12.8	11.7	13.8	0.5	915.0	<0.001
LFD	old	female	W6	8.7	7.4	10.0	0.7	1024.1	
HFD	old	female	W7	13.3	12.3	14.4	0.5	915.0	<0.001
LFD	old	female	W7	8.7	7.4	10.0	0.7	1024.1	
HFD	old	female	W8	13.6	12.6	14.7	0.5	893.9	<0.001
LFD	old	female	W8	8.1	6.7	9.5	0.7	1037.9	
HFD	old	male	W1	9.7	8.4	11.0	0.6	1008.9	<0.001
LFD	old	male	W1	6.7	5.4	8.0	0.7	1024.1	
HFD	old	male	W2	11.4	10.2	12.7	0.6	1008.9	<0.001
LFD	old	male	W2	6.8	5.5	8.2	0.7	1024.1	
HFD	old	male	W3	12.6	11.4	13.9	0.6	1008.9	<0.001
LFD	old	male	W3	6.9	5.6	8.3	0.7	1024.1	
HFD	old	male	W4	14.8	13.8	15.8	0.5	893.9	<0.001
LFD	old	male	W4	7.3	6.2	8.3	0.5	914.5	
HFD	old	male	W5	15.5	14.4	16.5	0.5	893.9	<0.001
LFD	old	male	W5	7.6	6.4	8.8	0.6	992.3	

HFD	old	male	W6	15.7	14.7	16.7	0.5	893.9	<0.001
LFD	old	male	W6	7.7	6.5	9.0	0.6	992.3	
HFD	old	male	W7	16.5	15.5	17.6	0.5	914.9	<0.001
LFD	old	male	W7	7.5	6.4	8.6	0.5	914.5	
HFD	old	male	W8	16.6	15.5	17.7	0.6	935.7	<0.001
LFD	old	male	W8	7.7	6.7	8.8	0.5	914.5	
HFD	young	female	W6	5.9	5.0	6.8	0.5	817.8	0.003
LFD	young	female	W6	4.1	3.2	4.9	0.4	757.5	
HFD	young	female	W7	6.0	5.1	6.9	0.5	817.8	0.002
LFD	young	female	W7	4.0	3.2	4.9	0.4	777.3	
HFD	young	female	W8	7.1	5.9	8.2	0.6	977.8	<0.001
LFD	young	female	W8	4.5	3.5	5.5	0.5	911.3	
HFD	young	male	W4	6.8	5.8	7.8	0.5	874.0	0.003
LFD	young	male	W4	4.7	3.7	5.8	0.5	914.5	
HFD	young	male	W5	7.5	6.5	8.5	0.5	874.0	<0.001
LFD	young	male	W5	4.8	3.7	5.9	0.5	914.5	
HFD	young	male	W6	8.8	7.8	9.8	0.5	874.0	<0.001
LFD	young	male	W6	4.9	3.9	6.0	0.5	914.5	
HFD	young	male	W7	9.4	8.4	10.4	0.5	893.9	<0.001
LFD	young	male	W7	4.9	3.9	6.0	0.5	914.5	
HFD	young	male	W8	9.5	8.3	10.8	0.6	1009.6	<0.001
LFD	young	male	W8	4.9	3.3	6.5	0.8	1059.4	

Supplementary Table 5. Comparisons by sex for fat mass.

sex	diet	age	timepoint	lsmean	lower.CL	upper.CL	SE	df	p.value
female	HFD	old	W2	8.9	7.5	10.3	0.7	1037.9	0.006
male	HFD	old	W2	11.4	10.2	12.7	0.6	1008.9	
female	HFD	old	W3	10.3	9.0	11.7	0.7	1024.1	0.011
male	HFD	old	W3	12.6	11.4	13.9	0.6	1008.9	
female	HFD	old	W4	11.9	10.9	13.0	0.5	893.9	<0.001
male	HFD	old	W4	14.8	13.8	15.8	0.5	893.9	
female	HFD	old	W5	12.1	11.0	13.1	0.5	915.0	<0.001
male	HFD	old	W5	15.5	14.4	16.5	0.5	893.9	
female	HFD	old	W6	12.8	11.7	13.8	0.5	915.0	<0.001
male	HFD	old	W6	15.7	14.7	16.7	0.5	893.9	
female	HFD	old	W7	13.3	12.3	14.4	0.5	915.0	<0.001
male	HFD	old	W7	16.5	15.5	17.6	0.5	914.9	
female	HFD	old	W8	13.6	12.6	14.7	0.5	893.9	<0.001
male	HFD	old	W8	16.6	15.5	17.7	0.6	935.7	
female	HFD	young	W3	4.5	3.6	5.4	0.5	817.8	0.032
male	HFD	young	W3	5.9	4.9	6.9	0.5	874.0	
female	HFD	young	W4	4.8	3.9	5.8	0.5	817.8	0.003
male	HFD	young	W4	6.8	5.8	7.8	0.5	874.0	
female	HFD	young	W5	4.9	3.9	5.8	0.5	838.6	<0.001
male	HFD	young	W5	7.5	6.5	8.5	0.5	874.0	
female	HFD	young	W6	5.9	5.0	6.8	0.5	817.8	<0.001
male	HFD	young	W6	8.8	7.8	9.8	0.5	874.0	

female	HFD	young	W7	6.0	5.1	6.9	0.5	817.8	<0.001
male	HFD	young	W7	9.4	8.4	10.4	0.5	893.9	
female	HFD	young	W8	7.1	5.9	8.2	0.6	977.8	0.004
male	HFD	young	W8	9.5	8.3	10.8	0.6	1009.6	

Supplementary Table 6. Comparisons by age for fat mass.

age	diet	sex	timepoint	lsmean	lower.CL	upper.CL	SE	df	p.value
old	HFD	female	W0	8.2	7.2	9.2	0.5	893.9	<0.001
young	HFD	female	W0	3.5	2.5	4.4	0.5	817.8	
old	HFD	female	W1	8.1	6.7	9.4	0.7	1024.1	<0.001
young	HFD	female	W1	3.6	2.7	4.5	0.5	817.8	
old	HFD	female	W2	8.9	7.5	10.3	0.7	1037.9	<0.001
young	HFD	female	W2	4.3	3.4	5.3	0.5	817.8	
old	HFD	female	W3	10.3	9.0	11.7	0.7	1024.1	<0.001
young	HFD	female	W3	4.5	3.6	5.4	0.5	817.8	
old	HFD	female	W4	11.9	10.9	13.0	0.5	893.9	<0.001
young	HFD	female	W4	4.8	3.9	5.8	0.5	817.8	
old	HFD	female	W5	12.1	11.0	13.1	0.5	915.0	<0.001
young	HFD	female	W5	4.9	3.9	5.8	0.5	838.6	
old	HFD	female	W6	12.8	11.7	13.8	0.5	915.0	<0.001
young	HFD	female	W6	5.9	5.0	6.8	0.5	817.8	
old	HFD	female	W7	13.3	12.3	14.4	0.5	915.0	<0.001
young	HFD	female	W7	6.0	5.1	6.9	0.5	817.8	
old	HFD	female	W8	13.6	12.6	14.7	0.5	893.9	<0.001
young	HFD	female	W8	7.1	5.9	8.2	0.6	977.8	
old	LFD	female	W0	8.3	7.0	9.7	0.7	1024.1	<0.001
young	LFD	female	W0	3.5	2.6	4.3	0.4	757.5	
old	LFD	female	W1	8.0	6.5	9.5	0.8	1049.8	<0.001
young	LFD	female	W1	3.7	2.9	4.6	0.4	757.5	
old	LFD	female	W2	8.1	6.6	9.6	0.8	1049.8	<0.001
young	LFD	female	W2	3.9	3.0	4.7	0.4	757.5	
old	LFD	female	W3	7.9	6.4	9.4	0.8	1049.8	<0.001
young	LFD	female	W3	4.0	3.2	4.9	0.4	757.5	
old	LFD	female	W4	8.1	6.8	9.4	0.7	1024.1	<0.001
young	LFD	female	W4	3.9	3.0	4.7	0.4	757.5	
old	LFD	female	W5	8.2	6.9	9.5	0.7	1024.1	<0.001
young	LFD	female	W5	4.0	3.1	4.9	0.4	757.5	
old	LFD	female	W6	8.7	7.4	10.0	0.7	1024.1	<0.001
young	LFD	female	W6	4.1	3.2	4.9	0.4	757.5	
old	LFD	female	W7	8.7	7.4	10.0	0.7	1024.1	<0.001
young	LFD	female	W7	4.0	3.2	4.9	0.4	777.3	
old	LFD	female	W8	8.1	6.7	9.5	0.7	1037.9	<0.001
young	LFD	female	W8	4.5	3.5	5.5	0.5	911.3	
old	HFD	male	W0	8.4	7.4	9.4	0.5	893.9	<0.001
young	HFD	male	W0	4.0	3.0	5.0	0.5	874.0	
old	HFD	male	W1	9.7	8.4	11.0	0.6	1008.9	<0.001
young	HFD	male	W1	4.7	3.7	5.7	0.5	874.0	

old	HFD	male	W2	11.4	10.2	12.7	0.6	1008.9	<0.001
young	HFD	male	W2	5.4	4.4	6.4	0.5	874.0	
old	HFD	male	W3	12.6	11.4	13.9	0.6	1008.9	<0.001
young	HFD	male	W3	5.9	4.9	6.9	0.5	874.0	
old	HFD	male	W4	14.8	13.8	15.8	0.5	893.9	<0.001
young	HFD	male	W4	6.8	5.8	7.8	0.5	874.0	
old	HFD	male	W5	15.5	14.4	16.5	0.5	893.9	<0.001
young	HFD	male	W5	7.5	6.5	8.5	0.5	874.0	
old	HFD	male	W6	15.7	14.7	16.7	0.5	893.9	<0.001
young	HFD	male	W6	8.8	7.8	9.8	0.5	874.0	
old	HFD	male	W7	16.5	15.5	17.6	0.5	914.9	<0.001
young	HFD	male	W7	9.4	8.4	10.4	0.5	893.9	
old	HFD	male	W8	16.6	15.5	17.7	0.6	935.7	<0.001
young	HFD	male	W8	9.5	8.3	10.8	0.6	1009.6	
old	LFD	male	W0	8.0	6.9	9.1	0.5	914.5	<0.001
young	LFD	male	W0	3.9	2.9	5.0	0.5	914.5	
old	LFD	male	W1	6.7	5.4	8.0	0.7	1024.1	0.005
young	LFD	male	W1	4.3	3.3	5.4	0.5	914.5	
old	LFD	male	W2	6.8	5.5	8.2	0.7	1024.1	0.003
young	LFD	male	W2	4.4	3.3	5.4	0.5	914.5	
old	LFD	male	W3	6.9	5.6	8.3	0.7	1024.1	0.008
young	LFD	male	W3	4.7	3.6	5.8	0.5	914.5	
old	LFD	male	W4	7.3	6.2	8.3	0.5	914.5	<0.001
young	LFD	male	W4	4.7	3.7	5.8	0.5	914.5	
old	LFD	male	W5	7.6	6.4	8.8	0.6	992.3	<0.001
young	LFD	male	W5	4.8	3.7	5.9	0.5	914.5	
old	LFD	male	W6	7.7	6.5	9.0	0.6	992.3	<0.001
young	LFD	male	W6	4.9	3.9	6.0	0.5	914.5	
old	LFD	male	W7	7.5	6.4	8.6	0.5	914.5	<0.001
young	LFD	male	W7	4.9	3.9	6.0	0.5	914.5	
old	LFD	male	W8	7.7	6.7	8.8	0.5	914.5	0.003

Statistically significant differences for lean mass by diet, sex and age

Supplementary Table 7. Comparisons by diet for lean mass.

diet	age	sex	timepoint	lsmean	lower.CL	upper.CL	SE	df	p.value
HFD	old	male	W5	26.8	26.0	27.7	0.5	566.9	0.018
LFD	old	male	W5	25.3	24.3	26.3	0.5	747.6	
HFD	old	male	W7	27.2	26.3	28.2	0.5	599.0	0.002
LFD	old	male	W7	25.4	24.5	26.3	0.5	598.9	
HFD	old	male	W8	26.9	26.0	27.8	0.5	633.1	<0.001
LFD	old	male	W8	24.8	23.9	25.7	0.5	598.9	
HFD	young	male	W6	22.3	21.5	23.2	0.4	537.1	0.007
LFD	young	male	W6	20.8	19.9	21.7	0.5	566.9	
HFD	young	male	W7	22.6	21.7	23.5	0.5	566.9	0.010
LFD	young	male	W7	21.1	20.2	22.0	0.5	566.9	
HFD	young	male	W8	23.2	22.1	24.2	0.5	789.3	0.003

Supplementary Table 8. Comparisons by sex for lean mass.

sex	diet	age	timepoint	lsmean	lower.CL	upper.CL	SE	df	p.value
female	HFD	old	W0	20.8	19.9	21.7	0.5	566.9	<0.001
male	HFD	old	W0	25.0	24.2	25.9	0.5	566.9	
female	HFD	old	W1	20.7	19.6	21.9	0.6	831.6	<0.001
male	HFD	old	W1	24.9	23.9	26.0	0.5	789.3	
female	HFD	old	W2	21.1	19.9	22.3	0.6	874.1	<0.001
male	HFD	old	W2	25.2	24.1	26.3	0.5	789.3	
female	HFD	old	W3	22.0	20.9	23.1	0.6	831.6	<0.001
male	HFD	old	W3	25.7	24.6	26.7	0.5	789.3	
female	HFD	old	W4	22.4	21.5	23.3	0.5	566.9	<0.001
male	HFD	old	W4	26.6	25.7	27.5	0.5	566.9	
female	HFD	old	W5	21.6	20.7	22.5	0.5	598.9	<0.001
male	HFD	old	W5	26.8	26.0	27.7	0.5	566.9	
female	HFD	old	W6	22.2	21.3	23.1	0.5	598.9	<0.001
male	HFD	old	W6	27.1	26.3	28.0	0.5	566.9	
female	HFD	old	W7	22.3	21.4	23.2	0.5	598.9	<0.001
male	HFD	old	W7	27.2	26.3	28.2	0.5	599.0	
female	HFD	old	W8	22.3	21.5	23.2	0.5	566.9	<0.001
male	HFD	old	W8	26.9	26.0	27.8	0.5	633.1	
female	LFD	old	W0	21.0	19.7	22.3	0.7	955.6	<0.001
male	LFD	old	W0	25.7	24.8	26.7	0.5	598.9	
female	LFD	old	W1	21.7	20.5	22.8	0.6	874.1	<0.001
male	LFD	old	W1	25.9	24.8	27.0	0.6	831.6	
female	LFD	old	W2	21.1	19.7	22.6	0.7	991.8	<0.001
male	LFD	old	W2	24.6	23.2	26.1	0.7	991.8	
female	LFD	old	W3	20.9	19.5	22.4	0.7	991.8	<0.001
male	LFD	old	W3	25.5	24.4	26.7	0.6	831.6	
female	LFD	old	W4	21.6	20.5	22.8	0.6	874.1	<0.001
male	LFD	old	W4	25.8	24.9	26.7	0.5	598.9	
female	LFD	old	W5	21.3	20.2	22.5	0.6	874.1	<0.001
male	LFD	old	W5	25.3	24.3	26.3	0.5	747.6	
female	LFD	old	W6	21.6	20.4	22.8	0.6	874.1	<0.001
male	LFD	old	W6	26.0	24.9	27.0	0.5	747.6	
female	LFD	old	W7	21.4	20.1	22.8	0.7	955.6	<0.001
male	LFD	old	W7	25.4	24.5	26.3	0.5	598.9	
female	LFD	old	W8	21.2	20.0	22.5	0.6	915.9	<0.001
male	LFD	old	W8	24.8	23.9	25.7	0.5	598.9	
female	HFD	young	W0	15.6	14.7	16.4	0.4	460.2	<0.001
male	HFD	young	W0	18.8	17.9	19.6	0.4	537.1	
female	HFD	young	W1	15.1	14.3	15.9	0.4	438.9	<0.001
male	HFD	young	W1	19.3	18.4	20.2	0.4	537.1	
female	HFD	young	W2	16.5	15.7	17.3	0.4	460.2	<0.001
male	HFD	young	W2	19.9	19.0	20.7	0.4	537.1	
female	HFD	young	W3	17.0	16.2	17.8	0.4	460.2	<0.001
male	HFD	young	W3	20.5	19.6	21.3	0.4	537.1	
female	HFD	young	W4	17.3	16.5	18.1	0.4	460.2	<0.001
male	HFD	young	W4	21.5	20.6	22.3	0.4	537.1	

female	HFD	young	W5	17.4	16.6	18.2	0.4	484.5	<0.001
male	HFD	young	W5	21.6	20.7	22.5	0.4	537.1	
female	HFD	young	W6	18.1	17.3	18.9	0.4	460.2	<0.001
male	HFD	young	W6	22.3	21.5	23.2	0.4	537.1	
female	HFD	young	W7	18.2	17.4	19.0	0.4	460.2	<0.001
male	HFD	young	W7	22.6	21.7	23.5	0.5	566.9	
female	HFD	young	W8	18.6	17.6	19.6	0.5	709.0	<0.001
male	HFD	young	W8	23.2	22.1	24.2	0.5	789.3	
female	LFD	young	W0	15.9	15.2	16.7	0.4	383.4	<0.001
male	LFD	young	W0	18.5	17.6	19.4	0.5	566.9	
female	LFD	young	W1	15.9	15.2	16.7	0.4	383.4	<0.001
male	LFD	young	W1	18.9	18.0	19.8	0.5	566.9	
female	LFD	young	W2	16.4	15.6	17.1	0.4	383.4	<0.001
male	LFD	young	W2	19.6	18.7	20.5	0.5	566.9	
female	LFD	young	W3	16.5	15.8	17.3	0.4	383.4	<0.001
male	LFD	young	W3	19.9	19.0	20.8	0.5	566.9	
female	LFD	young	W4	16.8	16.0	17.5	0.4	383.4	<0.001
male	LFD	young	W4	20.4	19.5	21.3	0.5	566.9	
female	LFD	young	W5	17.0	16.2	17.7	0.4	383.4	<0.001
male	LFD	young	W5	20.5	19.6	21.4	0.5	566.9	
female	LFD	young	W6	17.1	16.4	17.9	0.4	383.4	<0.001
male	LFD	young	W6	20.8	19.9	21.7	0.5	566.9	
female	LFD	young	W7	17.3	16.5	18.0	0.4	383.4	<0.001
male	LFD	young	W7	21.1	20.2	22.0	0.5	566.9	
female	LFD	young	W8	17.6	16.8	18.5	0.5	573.4	<0.001
male	LFD	young	W8	20.8	19.6	22.1	0.6	915.8	

Supplementary Table 9. Comparisons by age for lean mass.

age	diet	sex	timepoint	lsmean	lower.CL	upper.CL	SE	df	p.value
old	HFD	female	W0	20.8	19.9	21.7	0.5	566.9	<0.001
young	HFD	female	W0	15.6	14.7	16.4	0.4	460.2	
old	HFD	female	W1	20.7	19.6	21.9	0.6	831.6	<0.001
young	HFD	female	W1	15.1	14.3	15.9	0.4	438.9	
old	HFD	female	W2	21.1	19.9	22.3	0.6	874.1	<0.001
young	HFD	female	W2	16.5	15.7	17.3	0.4	460.2	
old	HFD	female	W3	22.0	20.9	23.1	0.6	831.6	<0.001
young	HFD	female	W3	17.0	16.2	17.8	0.4	460.2	
old	HFD	female	W4	22.4	21.5	23.3	0.5	566.9	<0.001
young	HFD	female	W4	17.3	16.5	18.1	0.4	460.2	
old	HFD	female	W5	21.6	20.7	22.5	0.5	598.9	<0.001
young	HFD	female	W5	17.4	16.6	18.2	0.4	484.5	
old	HFD	female	W6	22.2	21.3	23.1	0.5	598.9	<0.001
young	HFD	female	W6	18.1	17.3	18.9	0.4	460.2	
old	HFD	female	W7	22.3	21.4	23.2	0.5	598.9	<0.001
young	HFD	female	W7	18.2	17.4	19.0	0.4	460.2	
old	HFD	female	W8	22.3	21.5	23.2	0.5	566.9	<0.001
young	HFD	female	W8	18.6	17.6	19.6	0.5	709.0	

old	LFD	female	W0	21.0	19.7	22.3	0.7	955.6	<0.001
young	LFD	female	W0	15.9	15.2	16.7	0.4	383.4	
old	LFD	female	W1	21.7	20.5	22.8	0.6	874.1	<0.001
young	LFD	female	W1	15.9	15.2	16.7	0.4	383.4	
old	LFD	female	W2	21.1	19.7	22.6	0.7	991.8	<0.001
young	LFD	female	W2	16.4	15.6	17.1	0.4	383.4	
old	LFD	female	W3	20.9	19.5	22.4	0.7	991.8	<0.001
young	LFD	female	W3	16.5	15.8	17.3	0.4	383.4	
old	LFD	female	W4	21.6	20.5	22.8	0.6	874.1	<0.001
young	LFD	female	W4	16.8	16.0	17.5	0.4	383.4	
old	LFD	female	W5	21.3	20.2	22.5	0.6	874.1	<0.001
young	LFD	female	W5	17.0	16.2	17.7	0.4	383.4	
old	LFD	female	W6	21.6	20.4	22.8	0.6	874.1	<0.001
young	LFD	female	W6	17.1	16.4	17.9	0.4	383.4	
old	LFD	female	W7	21.4	20.1	22.8	0.7	955.6	<0.001
young	LFD	female	W7	17.3	16.5	18.0	0.4	383.4	
old	LFD	female	W8	21.2	20.0	22.5	0.6	915.9	<0.001
young	LFD	female	W8	17.6	16.8	18.5	0.5	573.4	
old	HFD	male	W0	25.0	24.2	25.9	0.5	566.9	<0.001
young	HFD	male	W0	18.8	17.9	19.6	0.4	537.1	
old	HFD	male	W1	24.9	23.9	26.0	0.5	789.3	<0.001
young	HFD	male	W1	19.3	18.4	20.2	0.4	537.1	
old	HFD	male	W2	25.2	24.1	26.3	0.5	789.3	<0.001
young	HFD	male	W2	19.9	19.0	20.7	0.4	537.1	
old	HFD	male	W3	25.7	24.6	26.7	0.5	789.3	<0.001
young	HFD	male	W3	20.5	19.6	21.3	0.4	537.1	
old	HFD	male	W4	26.6	25.7	27.5	0.5	566.9	<0.001
young	HFD	male	W4	21.5	20.6	22.3	0.4	537.1	
old	HFD	male	W5	26.8	26.0	27.7	0.5	566.9	<0.001
young	HFD	male	W5	21.6	20.7	22.5	0.4	537.1	
old	HFD	male	W6	27.1	26.3	28.0	0.5	566.9	<0.001
young	HFD	male	W6	22.3	21.5	23.2	0.4	537.1	
old	HFD	male	W7	27.2	26.3	28.2	0.5	599.0	<0.001
young	HFD	male	W7	22.6	21.7	23.5	0.5	566.9	
old	HFD	male	W8	26.9	26.0	27.8	0.5	633.1	<0.001
young	HFD	male	W8	23.2	22.1	24.2	0.5	789.3	
old	LFD	male	W0	25.7	24.8	26.7	0.5	598.9	<0.001
young	LFD	male	W0	18.5	17.6	19.4	0.5	566.9	
old	LFD	male	W1	25.9	24.8	27.0	0.6	831.6	<0.001
young	LFD	male	W1	18.9	18.0	19.8	0.5	566.9	
old	LFD	male	W2	24.6	23.2	26.1	0.7	991.8	<0.001
young	LFD	male	W2	19.6	18.7	20.5	0.5	566.9	
old	LFD	male	W3	25.5	24.4	26.7	0.6	831.6	<0.001
young	LFD	male	W3	19.9	19.0	20.8	0.5	566.9	
old	LFD	male	W4	25.8	24.9	26.7	0.5	598.9	<0.001
young	LFD	male	W4	20.4	19.5	21.3	0.5	566.9	
old	LFD	male	W5	25.3	24.3	26.3	0.5	747.6	<0.001
young	LFD	male	W5	20.5	19.6	21.4	0.5	566.9	

old	LFD	male	W6	26.0	24.9	27.0	0.5	747.6	<0.001
young	LFD	male	W6	20.8	19.9	21.7	0.5	566.9	
old	LFD	male	W7	25.4	24.5	26.3	0.5	598.9	<0.001
young	LFD	male	W7	21.1	20.2	22.0	0.5	566.9	
old	LFD	male	W8	24.8	23.9	25.7	0.5	598.9	<0.001
young	LFD	male	W8	20.8	19.6	22.1	0.6	915.8	

Statistically significant differences for dermis (fibroblast rich dermis +dWAT) by diet and age

Supplementary Table 10. Summary of coefficients of model for dermis (fibroblast rich dermis + dWAT): diet.

	Estimate	Std. Error	t value	Pr(> t)
(Intercept)	504	37.7	13.38	0.000
diet - LFD	-144	53.3	-2.71	0.013

Statistically significant differences for dWAT by diet and age

Supplementary Table 11. Comparisons by diet for dWAT.

diet	age	lsmean	lower.CL	upper.CL	SE	df	p.value
HFD	old	331.3	247.4	415.2	40.2	20.0	0.009
LFD	old	167.2	83.3	251.2	40.2	20.0	
HFD	young	291.5	207.6	375.4	40.2	20.0	0.049
LFD	young	172.4	88.5	256.3	40.2	20.0	

Supplementary Table 12. Summary of coefficients of model for dWAT: diet.

	Estimate	Std. Error	t value	Pr(> t)
(Intercept)	311	27.5	11.34	0.000
diet - LFD	-142	38.8	-3.65	0.001

Statistically significant differences for fibroblasts rich dermis by diet and age

Supplementary Table 13. Summary of coefficients of model for fibroblasts rich dermis: age.

	Estimate	Std. Error	t value	Pr(> t)
(Intercept)	153.9	23.9	6.43	0.000
age - young	74.9	33.8	2.21	0.038

Statistically significant differences for MCP-1 by diet and age

Supplementary Table 14. Comparisons by age for MCP-1.

age	diet	day	lsmean	lower.CL	upper.CL	SE	df	p.value
old	HFD	D3	271.5	214.8	328.2	28.3	60.0	0.002
young	HFD	D3	138.5	81.8	195.1	28.3	60.0	
old	LFD	D0	149.4	92.8	206.1	28.3	60.0	0.047
young	LFD	D0	68.2	11.6	124.9	28.3	60.0	

old	LFD	D3	266.3	209.6	322.9	28.3	60.0	0.001
young	LFD	D3	128.9	72.2	185.6	28.3	60.0	

Supplementary Table 15. Summary of coefficients of model for MCP-1: age + diet + day + age:day.

	Estimate	Std. Error	t value	Pr(> t)
(Intercept)	95.83	21.7	4.417	0.000
age - young	-40.02	28.4	-1.409	0.164
diet - LFD	29.73	16.4	1.813	0.074
dayD3	158.21	28.4	5.569	0.000
dayD7	28.20	28.4	0.993	0.325
age - young:dayD3	-95.19	40.2	-2.370	0.021
age - young:dayD7	-3.69	40.2	-0.092	0.927

Statistically significant differences for CD68 mRNA expression by diet, sex and age

Supplementary Table 16. Comparisons by diet for CD68 mRNA expression.

diet	age	sex	day	lsmean	lower.CL	upper.CL	SE	df	p.value
HFD	young	female	D0	2.4	0.8	4.0	0.8	192.0	<0.001
LFD	young	female	D0	6.2	4.7	7.8	0.8	192.0	
HFD	young	female	D7	9.8	7.7	11.8	1.0	192.0	0.027
LFD	young	female	D7	6.6	4.8	8.5	0.9	192.0	
HFD	young	male	D0	3.6	1.9	5.3	0.9	192.0	0.005
LFD	young	male	D0	7.0	5.4	8.7	0.9	192.0	
HFD	young	male	D3	9.1	7.3	11.0	0.9	192.0	0.023
LFD	young	male	D3	11.9	10.4	13.5	0.8	192.0	

Supplementary Table 17. Comparisons by sex for CD68 mRNA expression.

sex	diet	age	day	lsmean	lower.CL	upper.CL	SE	df	p.value
female	LFD	old	D7	3.2	1.5	4.9	0.9	192.0	0.013
male	LFD	old	D7	6.3	4.6	8.0	0.9	192.0	
female	HFD	young	D3	12.6	10.8	14.5	0.9	192.0	0.009
male	HFD	young	D3	9.1	7.3	11.0	0.9	192.0	

Supplementary Table 18. Comparisons by age for CD68 mRNA expression.

age	diet	sex	day	lsmean	lower.CL	upper.CL	SE	df	p.value
old	HFD	female	D3	8.9	7.2	10.6	0.9	192.0	0.004
young	HFD	female	D3	12.6	10.8	14.5	0.9	192.0	
old	HFD	female	D7	3.8	1.7	5.9	1.0	192.0	<0.001
young	HFD	female	D7	9.8	7.7	11.8	1.0	192.0	
old	LFD	female	D0	2.3	0.6	4.0	0.9	192.0	0.001
young	LFD	female	D0	6.2	4.7	7.8	0.8	192.0	
old	LFD	female	D7	3.2	1.5	4.9	0.9	192.0	0.008
young	LFD	female	D7	6.6	4.8	8.5	0.9	192.0	
old	LFD	female	D14	1.3	-0.4	3.0	0.9	192.0	0.002

young	LFD	female	D14	5.1	3.4	6.8	0.9	192.0	
old	LFD	female	D21	1.4	-0.3	3.1	0.9	192.0	0.035
young	LFD	female	D21	4.0	2.3	5.7	0.9	192.0	
old	HFD	male	D21	2.2	0.3	4.0	0.9	192.0	0.040
young	HFD	male	D21	4.8	3.1	6.5	0.9	192.0	
old	LFD	male	D0	2.9	1.4	4.5	0.8	192.0	<0.001
young	LFD	male	D0	7.0	5.4	8.7	0.9	192.0	
old	LFD	male	D3	8.5	6.9	10.2	0.9	192.0	0.004
young	LFD	male	D3	11.9	10.4	13.5	0.8	192.0	
old	LFD	male	D14	1.9	0.2	3.6	0.9	192.0	0.016
young	LFD	male	D14	5.0	3.1	6.8	0.9	192.0	
old	LFD	male	D21	1.6	-0.1	3.3	0.9	192.0	<0.001
young	LFD	male	D21	6.3	4.6	7.9	0.9	192.0	

Supplementary Table 19. Summary of coefficients of model for CD68 mRNA expression: age + sex + diet + day + age:sex + age:diet + age:day + sex:day + diet:day + age:sex:day + age:diet:day.

	Estimate	Std. Error	t value	Pr(> t)
(Intercept)	1.099	0.658	1.671	0.096
age - young	1.377	0.958	1.437	0.152
sex - male	1.207	0.796	1.515	0.131
diet - LFD	0.904	0.799	1.133	0.259
dayD3	7.970	1.003	7.949	0.000
dayD7	2.227	1.081	2.059	0.041
dayD14	1.201	0.992	1.210	0.228
dayD21	0.536	0.997	0.538	0.591
age - young:sex - male	-0.205	1.148	-0.179	0.858
age - young:diet - LFD	2.761	1.148	2.405	0.017
age - young:dayD3	0.761	1.458	0.522	0.602
age - young:dayD7	4.501	1.560	2.885	0.004
age - young:dayD14	0.639	1.425	0.448	0.654
age - young:dayD21	-0.536	1.488	-0.360	0.719
sex - male:dayD3	-1.420	1.205	-1.178	0.240
sex - male:dayD7	1.193	1.205	0.990	0.324
sex - male:dayD14	-0.319	1.171	-0.273	0.785
sex - male:dayD21	-0.792	1.186	-0.668	0.505
diet - LFD:dayD3	-1.033	1.207	-0.856	0.393
diet - LFD:dayD7	-0.675	1.207	-0.560	0.576
diet - LFD:dayD14	-2.061	1.172	-1.758	0.080
diet - LFD:dayD21	-1.242	1.187	-1.046	0.297
age - young:sex - male:dayD3	-0.290	1.705	-0.170	0.865
age - young:sex - male:dayD7	-3.440	1.753	-1.963	0.051
age - young:sex - male:dayD14	-0.193	1.681	-0.115	0.909
age - young:sex - male:dayD21	2.098	1.705	1.230	0.220
age - young:diet - LFD:dayD3	-2.205	1.708	-1.291	0.198
age - young:diet - LFD:dayD7	-5.096	1.752	-2.908	0.004
age - young:diet - LFD:dayD14	-1.107	1.681	-0.659	0.511
age - young:diet - LFD:dayD21	-0.940	1.705	-0.552	0.582

Statistically significant differences for re-epithelialization by diet and age

Supplementary Table 20. Comparisons by diet for reepithelialization.

diet	age	day	lsmean	lower.CL	upper.CL	SE	df	p.value
HFD	young	D3	24.8	2.9	46.7	10.9	46.0	0.019
LFD	young	D3	63.4	40.3	86.4	11.5	46.0	

Supplementary Table 21. Comparisons by age for re-epithelialization.

age	diet	day	lsmean	lower.CL	upper.CL	SE	df	p.value
old	LFD	D3	25.9	-2.4	54.2	14.0	46.0	0.045
young	LFD	D3	63.4	40.3	86.4	11.5	46.0	

Supplementary Table 22. Summary of coefficients of model for re-epithelialization: age + diet + day + age:diet.

	Estimate	Std. Error	t value	Pr(> t)
(Intercept)	32.82	9.68	3.390	0.001
age - young	-2.91	11.96	-0.243	0.809
diet - LFD	-8.20	13.61	-0.602	0.550
dayD7	47.82	9.56	5.001	0.000
age - young:diet - LFD	38.85	18.70	2.078	0.043

Statistically significant differences for *Mmp-9* mRNA expression by diet, sex and age

Supplementary Table 23. Comparisons by diet for *Mmp-9* mRNA expression.

diet	age	sex	day	lsmean	lower.CL	upper.CL	SE	df	p.value
HFD	old	female	D3	42.6	35.8	49.4	3.5	197.0	0.003
LFD	old	female	D3	27.1	19.6	34.5	3.8	197.0	
HFD	old	male	D7	11.5	4.7	18.3	3.5	197.0	0.008
LFD	old	male	D7	24.5	17.7	31.3	3.5	197.0	

Supplementary Table 24. Comparisons by sex for *Mmp-9* mRNA expression.

sex	diet	age	day	lsmean	lower.CL	upper.CL	SE	df	p.value
female	LFD	old	D3	27.1	19.6	34.5	3.8	197.0	0.001
male	LFD	old	D3	43.7	36.9	50.5	3.5	197.0	
female	HFD	young	D3	22.3	15.5	29.1	3.5	197.0	0.014
male	HFD	young	D3	35.0	27.5	42.5	3.8	197.0	

Supplementary Table 25. Comparisons by age for *Mmp-9* mRNA expression.

age	diet	sex	day	lsmean	lower.CL	upper.CL	SE	df	p.value
old	HFD	female	D3	42.6	35.8	49.4	3.5	197.0	<0.001
young	HFD	female	D3	22.3	15.5	29.1	3.5	197.0	
old	HFD	male	D3	45.9	39.1	52.7	3.5	197.0	0.034
young	HFD	male	D3	35.0	27.5	42.5	3.8	197.0	

old	LFD	male	D3	43.7	36.9	50.5	3.5	197.0	<0.001
young	LFD	male	D3	25.5	19.2	31.8	3.2	197.0	

Supplementary Table 26. Summary of coefficients of model for *Mmp-9* mRNA expression: age + sex + diet + day + age:day + diet:day.

	Estimate	Std. Error	t value	Pr(> t)
(Intercept)	4.202	2.00	2.100	0.037
age - young	1.238	2.31	0.536	0.593
sex - male	1.801	1.10	1.631	0.104
diet - LFD	4.696	2.31	2.032	0.043
dayD3	37.676	2.87	13.117	0.000
dayD7	10.926	2.99	3.653	0.000
dayD14	0.197	2.88	0.069	0.945
dayD21	-0.703	2.92	-0.240	0.810
age - young:dayD3	-14.272	3.39	-4.211	0.000
age - young:dayD7	-3.215	3.45	-0.932	0.352
age - young:dayD14	0.238	3.41	0.070	0.944
age - young:dayD21	-0.890	3.41	-0.261	0.794
diet - LFD:dayD3	-9.791	3.39	-2.889	0.004
diet - LFD:dayD7	-0.292	3.45	-0.084	0.933
diet - LFD:dayD14	-4.087	3.41	-1.200	0.231
diet - LFD:dayD21	-3.718	3.41	-1.091	0.276

Statistically significant differences for *Timp-1* mRNA expression by diet, sex and age

Supplementary Table 27. Comparisons by diet for *Timp-1* mRNA expression.

diet	age	sex	day	lsmean	lower.CL	upper.CL	SE	df	p.value
HFD	old	female	D3	157.2	136.8	177.6	10.3	197.0	<0.001
LFD	old	female	D3	44.4	22.1	66.8	11.3	197.0	
HFD	young	female	D3	82.4	62.0	102.8	10.3	197.0	0.011
LFD	young	female	D3	44.9	24.5	65.3	10.3	197.0	
HFD	young	female	D7	57.5	35.2	79.9	11.3	197.0	0.019
LFD	young	female	D7	19.5	-2.9	41.8	11.3	197.0	
HFD	young	male	D3	76.7	54.4	99.1	11.3	197.0	0.042
LFD	young	male	D3	46.4	27.5	65.3	9.6	197.0	

Supplementary Table 28. Comparisons by sex for *Timp-1* mRNA expression.

sex	diet	age	day	lsmean	lower.CL	upper.CL	SE	df	p.value
female	HFD	old	D3	157.2	136.8	177.6	10.3	197.0	<0.001
male	HFD	old	D3	88.0	67.6	108.4	10.3	197.0	

Supplementary Table 29. Comparisons by age for *Timp-1* mRNA expression.

age	diet	sex	day	lsmean	lower.CL	upper.CL	SE	df	p.value
old	HFD	female	D3	157.2	136.8	177.6	10.3	197.0	<0.001
young	HFD	female	D3	82.4	62.0	102.8	10.3	197.0	

Supplementary Table 30. Summary of coefficients of model for *Timp-1* mRNA expression: age * sex * diet * day.

	Estimate	Std. Error	t value	Pr(> t)
(Intercept)	1.993	8.96	0.222	0.824
age - young	0.380	13.12	0.029	0.977
sex - male	0.239	13.12	0.018	0.985
diet - LFD	3.203	13.69	0.234	0.815
dayD3	155.186	13.69	11.335	0.000
dayD7	30.090	15.52	1.938	0.054
dayD14	4.785	13.69	0.350	0.727
dayD21	7.882	13.69	0.576	0.565
age - young:sex - male	0.560	19.26	0.029	0.977
age - young:diet - LFD	-1.877	19.26	-0.097	0.922
sex - male:diet - LFD	-4.006	19.26	-0.208	0.835
age - young:dayD3	-75.128	19.66	-3.822	0.000
age - young:dayD7	25.045	21.48	1.166	0.245
age - young:dayD14	3.341	20.19	0.165	0.869
age - young:dayD21	-8.121	20.19	-0.402	0.688
sex - male:dayD3	-69.406	19.66	-3.531	0.001
sex - male:dayD7	-22.419	20.97	-1.069	0.286
sex - male:dayD14	5.978	19.66	0.304	0.761
sex - male:dayD21	-8.068	20.19	-0.400	0.690
diet - LFD:dayD3	-115.937	20.57	-5.637	0.000
diet - LFD:dayD7	11.831	21.34	0.555	0.580
diet - LFD:dayD14	-6.906	20.04	-0.345	0.731
diet - LFD:dayD21	-8.225	20.04	-0.410	0.682
age - young:sex - male:diet - LFD	9.248	27.73	0.334	0.739
age - young:sex - male:dayD3	62.913	28.65	2.196	0.029
age - young:sex - male:dayD7	1.109	29.57	0.037	0.970
age - young:sex - male:dayD14	-8.604	28.65	-0.300	0.764
age - young:sex - male:dayD21	10.156	29.02	0.350	0.727
age - young:diet - LFD:dayD3	77.065	28.65	2.690	0.008
age - young:diet - LFD:dayD7	-51.200	29.93	-1.711	0.089
age - young:diet - LFD:dayD14	0.732	28.65	0.026	0.980
age - young:diet - LFD:dayD21	8.596	28.65	0.300	0.764
sex - male:diet - LFD:dayD3	97.531	28.65	3.404	0.001
sex - male:diet - LFD:dayD7	13.657	29.21	0.468	0.641
sex - male:diet - LFD:dayD14	-0.840	28.27	-0.030	0.976
sex - male:diet - LFD:dayD21	8.937	28.65	0.312	0.755
age - young:sex - male:diet - LFD:dayD3	-95.603	40.66	-2.351	0.020
age - young:sex - male:diet - LFD:dayD7	26.887	41.50	0.648	0.518
age - young:sex - male:diet - LFD:dayD14	0.889	40.85	0.022	0.983
age - young:sex - male:diet - LFD:dayD21	-8.808	40.85	-0.216	0.829

Statistically significant differences for *Mmp-13* mRNA expression by diet, sex and age

Supplementary Table 31. Comparisons by diet for *Mmp-13* mRNA expression.

diet	age	sex	day	lsmean	lower.CL	upper.CL	SE	df	p.value
HFD	young	female	D7	228.5	181.0	276.0	24.1	193.0	<0.001
LFD	young	female	D7	42.2	-5.3	89.7	24.1	193.0	

Supplementary Table 32. Comparisons by sex for *Mmp-13* mRNA expression.

sex	diet	age	day	lsmean	lower.CL	upper.CL	SE	df	p.value
female	HFD	young	D3	214.6	171.3	258.0	22.0	193.0	<0.001
male	HFD	young	D3	88.3	40.8	135.8	24.1	193.0	
female	HFD	young	D7	228.5	181.0	276.0	24.1	193.0	<0.001
male	HFD	young	D7	41.0	-2.4	84.3	22.0	193.0	
female	LFD	young	D3	154.3	110.9	197.6	22.0	193.0	<0.001
male	LFD	young	D3	42.2	2.1	82.3	20.3	193.0	

Supplementary Table 33. Comparisons by age for *Mmp-13* mRNA expression.

age	diet	sex	day	lsmean	lower.CL	upper.CL	SE	df	p.value
old	HFD	female	D3	83.9	40.5	127.2	22.0	193.0	<0.001
young	HFD	female	D3	214.6	171.3	258.0	22.0	193.0	
old	HFD	female	D7	43.7	-9.4	96.8	26.9	193.0	<0.001
young	HFD	female	D7	228.5	181.0	276.0	24.1	193.0	
old	LFD	female	D3	42.1	-5.4	89.6	24.1	193.0	<0.001
young	LFD	female	D3	154.3	110.9	197.6	22.0	193.0	

Supplementary Table 34. Summary of coefficients of model for *Mmp-13* mRNA expression: age + sex + diet + day + age:sex + age:diet + sex:diet + age:day + sex:day + diet:day + age:sex:day + age:diet:day + sex:diet:day.

	Estimate	Std. Error	t value	Pr(> t)
(Intercept)	3.464	20.4	0.169	0.866
age - young	-4.597	26.6	-0.173	0.863
sex - male	-4.017	26.0	-0.155	0.877
diet - LFD	-3.861	26.6	-0.145	0.885
dayD3	78.814	29.0	2.718	0.007
dayD7	63.007	31.9	1.974	0.050
dayD14	7.473	29.0	0.258	0.797
dayD21	4.276	29.1	0.147	0.883
age - young:sex - male	8.778	30.2	0.291	0.771
age - young:diet - LFD	7.300	30.2	0.242	0.809
sex - male:diet - LFD	6.534	30.2	0.216	0.829
age - young:dayD3	138.544	37.9	3.653	0.000
age - young:dayD7	148.365	40.2	3.693	0.000
age - young:dayD14	3.324	38.6	0.086	0.931
age - young:dayD21	-1.659	39.6	-0.042	0.967
sex - male:dayD3	-11.268	37.5	-0.301	0.764

sex - male:dayD7	-54.900	39.2	-1.399	0.163
sex - male:dayD14	7.608	37.5	0.203	0.840
sex - male:dayD21	-2.421	38.3	-0.063	0.950
diet - LFD:dayD3	-34.428	38.5	-0.893	0.373
diet - LFD:dayD7	-43.419	39.7	-1.094	0.275
diet - LFD:dayD14	-4.227	38.0	-0.111	0.911
diet - LFD:dayD21	0.119	38.1	0.003	0.998
age - young:sex - male:dayD3	-123.338	43.6	-2.826	0.005
age - young:sex - male:dayD7	-103.912	44.5	-2.336	0.020
age - young:sex - male:dayD14	-12.133	43.8	-0.277	0.782
age - young:sex - male:dayD21	-1.981	44.2	-0.045	0.964
age - young:diet - LFD:dayD3	-32.576	43.6	-0.746	0.456
age - young:diet - LFD:dayD7	-109.833	44.4	-2.474	0.014
age - young:diet - LFD:dayD14	-5.003	43.8	-0.114	0.909
age - young:diet - LFD:dayD21	-2.948	44.2	-0.067	0.947
sex - male:diet - LFD:dayD3	14.236	43.6	0.326	0.745
sex - male:diet - LFD:dayD7	120.216	44.5	2.700	0.008
sex - male:diet - LFD:dayD14	-7.140	43.8	-0.163	0.871
sex - male:diet - LFD:dayD21	-2.235	44.2	-0.051	0.960

Statistically significant differences for *Tgfb-1* mRNA expression by diet, sex and age

Supplementary Table 35. Comparisons by diet for *Tgfb-1* mRNA expression.

diet	age	sex	day	lsmean	lower.CL	upper.CL	SE	df	p.value
HFD	old	male	D0	6.6	3.5	9.7	1.6	199.0	0.038
LFD	old	male	D0	11.3	8.2	14.4	1.6	199.0	
HFD	young	female	D0	7.4	4.3	10.5	1.6	199.0	0.043
LFD	young	female	D0	11.9	8.8	15.0	1.6	199.0	

Supplementary Table 36. Comparisons by sex for *Tgfb-1* mRNA expression.

sex	diet	age	day	lsmean	lower.CL	upper.CL	SE	df	p.value
female	HFD	old	D3	25.0	21.7	28.4	1.7	199.0	<0.001
male	HFD	old	D3	16.2	12.8	19.5	1.7	199.0	
female	HFD	old	D7	22.2	18.1	26.3	2.1	199.0	0.004
male	HFD	old	D7	14.4	11.0	17.7	1.7	199.0	
female	HFD	old	D14	14.2	10.8	17.5	1.7	199.0	0.016
male	HFD	old	D14	8.3	5.0	11.7	1.7	199.0	
female	LFD	old	D21	13.3	10.0	16.7	1.7	199.0	0.004
male	LFD	old	D21	6.3	2.9	9.7	1.7	199.0	

Supplementary Table 37. Comparisons by age for *Tgfb-1* mRNA expression.

age	diet	sex	day	lsmean	lower.CL	upper.CL	SE	df	p.value
old	HFD	female	D3	25.0	21.7	28.4	1.7	199.0	<0.001
young	HFD	female	D3	13.8	10.5	17.2	1.7	199.0	
old	HFD	female	D7	22.2	18.1	26.3	2.1	199.0	0.014

young	HFD	female	D7	15.3	11.6	19.0	1.9	199.0	
old	HFD	female	D14	14.2	10.8	17.5	1.7	199.0	0.008
young	HFD	female	D14	7.7	4.3	11.0	1.7	199.0	
old	HFD	female	D21	11.4	8.0	14.7	1.7	199.0	0.020
young	HFD	female	D21	5.7	2.4	9.1	1.7	199.0	
old	LFD	female	D3	26.0	22.3	29.7	1.9	199.0	<0.001
young	LFD	female	D3	13.0	9.6	16.4	1.7	199.0	
old	LFD	female	D7	20.1	16.7	23.4	1.7	199.0	0.008
young	LFD	female	D7	13.3	9.6	17.0	1.9	199.0	

Supplementary Table 38. Summary of coefficients of model for *Tgfb-1* mRNA expression: age + sex + diet + day + age:sex + age:day + sex:day + diet:day + age:sex:day.

	Estimate	Std. Error	t value	Pr(> t)
(Intercept)	7.272	1.20	6.053	0.000
age - young	0.522	1.56	0.335	0.738
sex - male	-0.204	1.56	-0.131	0.896
diet - LFD	3.717	1.12	3.308	0.001
dayD3	17.694	1.81	9.762	0.000
dayD7	13.821	1.92	7.186	0.000
dayD14	5.549	1.79	3.094	0.002
dayD21	4.233	1.79	2.360	0.019
age - young:sex - male	-0.470	2.25	-0.209	0.835
age - young:dayD3	-12.600	2.32	-5.429	0.000
age - young:dayD7	-7.168	2.42	-2.967	0.003
age - young:dayD14	-4.081	2.29	-1.780	0.076
age - young:dayD21	-4.718	2.29	-2.058	0.041
sex - male:dayD3	-8.583	2.32	-3.698	0.000
sex - male:dayD7	-5.267	2.36	-2.235	0.026
sex - male:dayD14	-4.462	2.29	-1.947	0.053
sex - male:dayD21	-5.828	2.32	-2.511	0.013
diet - LFD:dayD3	-2.637	1.65	-1.599	0.111
diet - LFD:dayD7	-3.983	1.68	-2.373	0.019
diet - LFD:dayD14	-3.682	1.65	-2.237	0.026
diet - LFD:dayD21	-2.044	1.65	-1.242	0.216
age - young:sex - male:dayD3	9.062	3.29	2.753	0.006
age - young:sex - male:dayD7	4.185	3.36	1.246	0.214
age - young:sex - male:dayD14	4.810	3.29	1.461	0.145
age - young:sex - male:dayD21	7.095	3.29	2.155	0.032

Statistically significant differences for *Tgfb-3* mRNA expression by diet, sex and age

Supplementary Table 39. Comparisons by diet for *Tgfb-3* mRNA expression.

diet	age	sex	day	lsmean	lower.CL	upper.CL	SE	df	p.value
HFD	old	female	D14	22.4	16.6	28.2	2.9	199.0	0.010
LFD	old	female	D14	11.6	5.8	17.4	2.9	199.0	

Supplementary Table 40. Comparisons by sex for *Tgfb-3* mRNA expression.

sex	diet	age	day	lsmean	lower.CL	upper.CL	SE	df	p.value
female	HFD	old	D14	22.4	16.6	28.2	2.9	199.0	0.005
male	HFD	old	D14	10.5	4.7	16.3	2.9	199.0	

Supplementary Table 41. Comparisons by age for *Tgfb-3* mRNA expression.

age	diet	sex	day	lsmean	lower.CL	upper.CL	SE	df	p.value
old	HFD	female	D14	22.4	16.6	28.2	2.9	199.0	0.003
young	HFD	female	D14	10.1	4.3	15.9	2.9	199.0	
old	HFD	male	D7	24.9	19.1	30.7	2.9	199.0	0.023
young	HFD	male	D7	15.4	9.6	21.2	2.9	199.0	

Supplementary Table 42. Summary of coefficients of model for *Tgfb-3* mRNA expression: age + sex + diet + day + age:sex + age:diet + sex:diet + age:day + sex:day + age:sex:diet + age:sex:day.

	Estimate	Std. Error	t value	Pr(> t)
(Intercept)	10.098	2.10	4.806	0.000
age - young	0.361	3.01	0.120	0.905
sex - male	5.087	3.00	1.693	0.092
diet - LFD	-0.357	1.90	-0.188	0.851
dayD3	-2.401	2.92	-0.822	0.412
dayD7	9.642	3.02	3.194	0.002
dayD14	7.071	2.85	2.477	0.014
dayD21	2.655	2.85	0.930	0.353
age - young:sex - male	-3.564	4.35	-0.819	0.414
age - young:diet - LFD	3.079	2.67	1.155	0.249
sex - male:diet - LFD	3.288	2.66	1.238	0.217
age - young:dayD3	-1.757	4.08	-0.431	0.667
age - young:dayD7	-1.819	4.26	-0.427	0.669
age - young:dayD14	-6.468	4.04	-1.603	0.110
age - young:dayD21	-2.885	4.04	-0.715	0.475
sex - male:dayD3	-6.050	4.08	-1.482	0.140
sex - male:dayD7	-2.736	4.15	-0.659	0.511
sex - male:dayD14	-11.855	4.04	-2.938	0.004
sex - male:dayD21	-11.690	4.08	-2.862	0.005
age - young:sex - male:diet - LFD	-6.229	3.76	-1.656	0.099
age - young:sex - male:dayD3	8.675	5.79	1.497	0.136
age - young:sex - male:dayD7	-1.104	5.92	-0.187	0.852
age - young:sex - male:dayD14	14.318	5.79	2.471	0.014
age - young:sex - male:dayD21	11.601	5.79	2.002	0.047

Statistically significant differences for *Collagen 1* mRNA expression by diet, sex and age

Supplementary Table 43. Comparisons by diet for *Collagen 1* mRNA expression.

diet	age	sex	day	lsmean	lower.CL	upper.CL	SE	df	p.value
HFD	old	female	D14	10.5	5.9	15.0	2.3	199.0	0.050
LFD	old	female	D14	4.1	-0.5	8.6	2.3	199.0	
HFD	young	male	D21	28.1	23.5	32.6	2.3	199.0	0.019
LFD	young	male	D21	20.4	15.9	24.9	2.3	199.0	

Supplementary Table 44. Comparisons by sex for *Collagen 1* mRNA expression.

sex	diet	age	day	lsmean	lower.CL	upper.CL	SE	df	p.value
female	HFD	old	D0	1.5	-2.4	5.4	2.0	199.0	0.049
male	HFD	old	D0	7.3	3.1	11.4	2.1	199.0	
female	HFD	young	D0	2.4	-1.8	6.6	2.1	199.0	<0.001
male	HFD	young	D0	24.6	20.0	29.1	2.3	199.0	
female	HFD	young	D7	14.8	9.8	19.7	2.5	199.0	<0.001
male	HFD	young	D7	33.8	29.3	38.4	2.3	199.0	
female	HFD	young	D14	6.8	2.2	11.3	2.3	199.0	<0.001
male	HFD	young	D14	31.2	26.7	35.7	2.3	199.0	
female	HFD	young	D21	4.7	0.1	9.2	2.3	199.0	<0.001
male	HFD	young	D21	28.1	23.5	32.6	2.3	199.0	
female	LFD	young	D0	3.6	-0.6	7.8	2.1	199.0	<0.001
male	LFD	young	D0	25.5	21.0	30.1	2.3	199.0	
female	LFD	young	D3	4.2	-0.3	8.8	2.3	199.0	0.018
male	LFD	young	D3	11.7	7.5	15.9	2.1	199.0	
female	LFD	young	D7	7.8	2.8	12.8	2.5	199.0	<0.001
male	LFD	young	D7	31.2	26.7	35.7	2.3	199.0	
female	LFD	young	D14	6.4	1.9	11.0	2.3	199.0	<0.001
male	LFD	young	D14	28.1	23.2	33.1	2.5	199.0	
female	LFD	young	D21	5.2	0.7	9.7	2.3	199.0	<0.001
male	LFD	young	D21	20.4	15.9	24.9	2.3	199.0	

Supplementary Table 45. Comparisons by age for *Collagen 1* mRNA expression.

age	diet	sex	day	lsmean	lower.CL	upper.CL	SE	df	p.value
old	HFD	male	D0	7.3	3.1	11.4	2.1	199.0	<0.001
young	HFD	male	D0	24.6	20.0	29.1	2.3	199.0	
old	HFD	male	D3	4.5	0.0	9.1	2.3	199.0	0.049
young	HFD	male	D3	11.3	6.3	16.3	2.5	199.0	
old	HFD	male	D7	11.8	7.3	16.3	2.3	199.0	<0.001
young	HFD	male	D7	33.8	29.3	38.4	2.3	199.0	
old	HFD	male	D14	10.4	5.9	14.9	2.3	199.0	<0.001
young	HFD	male	D14	31.2	26.7	35.7	2.3	199.0	
old	HFD	male	D21	9.1	4.1	14.0	2.5	199.0	<0.001
young	HFD	male	D21	28.1	23.5	32.6	2.3	199.0	
old	LFD	male	D0	4.2	-0.0	8.4	2.1	199.0	<0.001
young	LFD	male	D0	25.5	21.0	30.1	2.3	199.0	

old	LFD	male	D3	5.4	0.8	9.9	2.3	199.0	0.045
young	LFD	male	D3	11.7	7.5	15.9	2.1	199.0	
old	LFD	male	D7	14.4	9.9	19.0	2.3	199.0	<0.001
young	LFD	male	D7	31.2	26.7	35.7	2.3	199.0	
old	LFD	male	D14	8.1	3.6	12.7	2.3	199.0	<0.001
young	LFD	male	D14	28.1	23.2	33.1	2.5	199.0	
old	LFD	male	D21	6.1	1.5	10.6	2.3	199.0	<0.001
young	LFD	male	D21	20.4	15.9	24.9	2.3	199.0	

Supplementary Table 46. Summary of coefficients of model for *Collagen 1* mRNA expression: age + sex + diet + day + age:sex + age:day + sex:day + age:sex:day.

	Estimate	Std. Error	t value	Pr(> t)
(Intercept)	2.521	1.519	1.659	0.098
age - young	1.220	2.104	0.580	0.563
sex - male	3.938	2.104	1.871	0.063
diet - LFD	-1.510	0.722	-2.092	0.038
dayD3	3.079	2.243	1.373	0.171
dayD7	7.845	2.308	3.399	0.001
dayD14	5.500	2.190	2.511	0.013
dayD21	3.424	2.190	1.563	0.119
age - young:sex - male	18.123	3.037	5.967	0.000
age - young:dayD3	-1.468	3.134	-0.468	0.640
age - young:dayD7	0.457	3.261	0.140	0.889
age - young:dayD14	-1.879	3.097	-0.607	0.545
age - young:dayD21	-1.479	3.097	-0.477	0.634
sex - male:dayD3	-3.826	3.134	-1.221	0.223
sex - male:dayD7	-0.431	3.181	-0.135	0.892
sex - male:dayD14	-1.925	3.097	-0.622	0.535
sex - male:dayD21	-1.630	3.134	-0.520	0.604
age - young:sex - male:dayD3	-11.187	4.448	-2.515	0.013
age - young:sex - male:dayD7	-0.400	4.538	-0.088	0.930
age - young:sex - male:dayD14	2.989	4.448	0.672	0.502
age - young:sex - male:dayD21	-1.122	4.448	-0.252	0.801

Statistically significant differences for *Collagen 3* mRNA expression by diet, sex and age

Supplementary Table 47. Comparisons by diet for *Collagen 3* mRNA expression.

Diet	age	sex	day	lsmean	lower.CL	upper.CL	SE	df	p.value
HFD	young	female	D7	22.8	16.5	29.0	3.2	199.0	0.021
LFD	young	female	D7	12.3	6.1	18.6	3.2	199.0	

Supplementary Table 48. Comparisons by sex for *Collagen 3* Mrna expression.

sex	diet	age	day	lsmean	lower.CL	upper.CL	SE	df	p.value
female	HFD	young	D0	2.4	-2.9	7.7	2.7	199.0	<0.001
male	HFD	young	D0	24.5	18.8	30.2	2.9	199.0	
female	HFD	young	D3	9.9	4.1	15.6	2.9	199.0	<0.001
male	HFD	young	D3	24.7	18.4	30.9	3.2	199.0	
female	HFD	young	D7	22.8	16.5	29.0	3.2	199.0	<0.001
male	HFD	young	D7	52.1	46.3	57.8	2.9	199.0	
female	HFD	young	D14	9.0	3.2	14.7	2.9	199.0	<0.001
male	HFD	young	D14	42.5	36.8	48.3	2.9	199.0	
female	HFD	young	D21	3.6	-2.1	9.3	2.9	199.0	<0.001
male	HFD	young	D21	31.5	25.8	37.2	2.9	199.0	
female	LFD	young	D0	3.2	-2.1	8.5	2.7	199.0	<0.001
male	LFD	young	D0	26.6	20.8	32.3	2.9	199.0	
female	LFD	young	D3	7.4	1.6	13.1	2.9	199.0	<0.001
male	LFD	young	D3	21.8	16.5	27.2	2.7	199.0	
female	LFD	young	D7	12.3	6.1	18.6	3.2	199.0	<0.001
male	LFD	young	D7	53.5	47.8	59.3	2.9	199.0	
female	LFD	young	D14	7.8	2.1	13.6	2.9	199.0	<0.001
male	LFD	young	D14	38.3	32.0	44.6	3.2	199.0	
female	LFD	young	D21	5.7	-0.0	11.4	2.9	199.0	<0.001
male	LFD	young	D21	28.3	22.6	34.0	2.9	199.0	

Supplementary Table 49. Comparisons by age for *Collagen 3* mRNA expression.

age	diet	sex	day	lsmean	lower.CL	upper.CL	SE	df	p.value
old	HFD	female	D7	6.0	-1.0	13.0	3.6	199.0	<0.001
young	HFD	female	D7	22.8	16.5	29.0	3.2	199.0	
old	HFD	male	D0	1.9	-3.4	7.2	2.7	199.0	<0.001
young	HFD	male	D0	24.5	18.8	30.2	2.9	199.0	
old	HFD	male	D3	6.4	0.7	12.2	2.9	199.0	<0.001
young	HFD	male	D3	24.7	18.4	30.9	3.2	199.0	
old	HFD	male	D7	6.6	0.9	12.3	2.9	199.0	<0.001
young	HFD	male	D7	52.1	46.3	57.8	2.9	199.0	
old	HFD	male	D14	7.3	1.5	13.0	2.9	199.0	<0.001
young	HFD	male	D14	42.5	36.8	48.3	2.9	199.0	
old	HFD	male	D21	4.2	-2.1	10.5	3.2	199.0	<0.001
young	HFD	male	D21	31.5	25.8	37.2	2.9	199.0	
old	LFD	male	D0	1.0	-4.3	6.3	2.7	199.0	<0.001
young	LFD	male	D0	26.6	20.8	32.3	2.9	199.0	
old	LFD	male	D3	7.4	1.7	13.1	2.9	199.0	<0.001
young	LFD	male	D3	21.8	16.5	27.2	2.7	199.0	
old	LFD	male	D7	11.9	6.1	17.6	2.9	199.0	<0.001
young	LFD	male	D7	53.5	47.8	59.3	2.9	199.0	
old	LFD	male	D14	5.7	-0.0	11.4	2.9	199.0	<0.001
young	LFD	male	D14	38.3	32.0	44.6	3.2	199.0	
old	LFD	male	D21	3.4	-2.3	9.1	2.9	199.0	<0.001
young	LFD	male	D21	28.3	22.6	34.0	2.9	199.0	

Supplementary Table 50. Summary of coefficients of model for *Collagen 3* mRNA expression: age + sex + day + age:sex + age:day + sex:day + age:sex:day.

	Estimate	Std. Error	t value	Pr(> t)
(Intercept)	0.575	1.86	0.309	0.758
age - young	2.195	2.63	0.833	0.406
sex - male	0.880	2.63	0.334	0.739
dayD3	4.279	2.81	1.524	0.129
dayD7	4.287	2.88	1.486	0.139
dayD14	2.119	2.74	0.773	0.440
dayD21	1.766	2.74	0.644	0.520
age - young:sex - male	21.874	3.80	5.753	0.000
age - young:dayD3	1.558	3.92	0.397	0.692
age - young:dayD7	10.489	4.08	2.570	0.011
age - young:dayD14	3.514	3.88	0.906	0.366
age - young:dayD21	0.099	3.88	0.026	0.980
sex - male:dayD3	1.199	3.92	0.305	0.760
sex - male:dayD7	3.485	3.98	0.876	0.382
sex - male:dayD14	2.920	3.88	0.753	0.452
sex - male:dayD21	0.557	3.92	0.142	0.887
age - young:sex - male:dayD3	-9.533	5.57	-1.712	0.088
age - young:sex - male:dayD7	9.017	5.68	1.587	0.114
age - young:sex - male:dayD14	6.525	5.57	1.172	0.243
age - young:sex - male:dayD21	1.953	5.57	0.351	0.726

Statistically significant differences for hydroxyproline content by diet and age

Supplementary Table 51. Summary of coefficients of model for hydroxyproline content: age + sex + diet + day + age:diet + age:day + diet:day + age:diet:day.

	Estimate	Std. Error	t value	Pr(> t)
(Intercept)	3.967	0.570	6.963	0.000
age- young	1.031	0.806	1.279	0.205
diet- LFD	0.577	0.806	0.716	0.476
dayD14	-0.655	0.834	-0.785	0.435
dayD21	-0.268	0.987	-0.271	0.787
age- young:diet- LFD	-1.602	1.160	-1.382	0.171
age- young:dayD14	-0.440	1.160	-0.380	0.705
age -young:dayD21	-2.563	1.274	-2.012	0.048
diet -LFD:dayD14	1.030	1.160	0.888	0.377
diet- LFD:dayD21	-1.117	1.292	-0.864	0.390
age- young:dietLFD:dayD14	-0.076	1.640	-0.046	0.963
age- young:dietLFD:dayD21	3.607	1.736	2.078	0.041

Statistically significant differences for fibrosis by diet and age

Supplementary Table 52. Comparisons by age for fibrosis.

age	diet	day	lsmean	lower.CL	upper.CL	SE	df	p.value
old	LFD	D14	18.3	12.7	23.9	2.7	16.0	0.028
young	LFD	D14	27.4	21.8	33.0	2.7	16.0	
old	LFD	D21	13.8	8.1	19.4	2.7	16.0	<0.001
young	LFD	D21	29.2	23.6	34.9	2.7	16.0	

Supplementary Table 53. Summary of coefficients of model for fibrosis: age * diet * day.

	Estimate	Std. Error	t value	Pr(> t)
(Intercept)	21.54	2.66	8.111	0.000
age - young	7.36	3.76	1.961	0.068
diet - LFD	-3.23	3.76	-0.860	0.402
dayD21	-2.19	3.76	-0.583	0.568
age - young:diet - LFD	1.73	5.31	0.326	0.749
age - young:dayD21	-5.10	5.31	-0.960	0.351
diet - LFD:dayD21	-2.36	5.31	-0.444	0.663
age - young:diet - LFD:dayD21	11.49	7.51	1.529	0.146