

Research



Cite this article: Adolf C *et al.* 2020

Identifying drivers of forest resilience in long-term records from the Neotropics. *Biol. Lett.*

16: 20200005.

<http://dx.doi.org/10.1098/rsbl.2020.0005>

Received: 9 January 2020

Accepted: 25 February 2020

Subject Areas:

ecology, environmental science, plant science

Keywords:

resilience, palaeoecology, forest, Neotropics, disturbance, pollen

Author for correspondence:

C. Adolf

e-mail: carole.adolf@zoo.ox.ac.uk

A contribution to the special feature 'Ecological resilience: from theory to empirical observations using long-term datasets' organised by the PAGES EcoRe3 Working Group.

Electronic supplementary material is available online at <https://doi.org/10.6084/m9.figshare.c.4880286>.

Global change biology

Identifying drivers of forest resilience in long-term records from the Neotropics

C. Adolf¹, C. Tovar², N. Kühn^{2,3}, H. Behling⁴, J. C. Berrío⁵, G. Dominguez-Vázquez⁶, B. Figueroa-Rangel⁷, Z. Gonzalez-Carranza⁸, G. A. Islebe⁹, H. Hooghiemstra⁸, H. Neff¹⁰, M. Olvera-Vargas⁷, B. Whitney¹¹, M. J. Wooller¹² and K. J. Willis¹

¹Long-Term Ecology Laboratory, Department of Zoology, University of Oxford, Oxford, UK

²Biodiversity Informatics and Spatial Analysis, Royal Botanic Gardens Kew, Richmond, UK

³School of Geography and the Environment, University of Oxford, Oxford, UK

⁴University of Göttingen, Department of Palynology and Climate Dynamics, Albrecht-von-Haller Institute for Plant Sciences, University of Göttingen, Göttingen, Germany

⁵School of Geography, Geology and Environment, University of Leicester, Leicester, UK

⁶Universidad Michoacana de San Nicolás de Hidalgo, Facultad de Biología, Morelia, México

⁷Departamento de Ecología y Recursos Naturales, Centro Universitario de la Costa Sur, Universidad de Guadalajara, Mexico

⁸Institute for Biodiversity and Ecosystem Dynamics, University of Amsterdam, Amsterdam, The Netherlands

⁹Departamento de Conservación de la Biodiversidad, El Colegio de la Frontera Sur (ECOSUR), Chetumal, Mexico

¹⁰Department of Anthropology and IIRMES, California State University, Long Beach, USA

¹¹Department of Geography and Environmental Science, Northumbria University, Newcastle-upon-Tyne, UK

¹²Institute of Northern Engineering and College of Fisheries and Ocean Sciences, University of Alaska Fairbanks, Fairbanks, USA

CA, 0000-0002-5127-3004; CT, 0000-0002-8256-9174; NK, 0000-0001-8704-3115; HB, 0000-0002-5843-8342; JCB, 0000-0002-9198-9277; BF-R, 0000-0002-5869-5277; GAI, 0000-0002-9612-7756; HH, 0000-0003-2502-1644; MOV, 0000-0002-7290-1639; MJW, 0000-0002-5065-4235; KJW, 0000-0002-6763-2489

Here, we use 30 long-term, high-resolution palaeoecological records from Mexico, Central and South America to address two hypotheses regarding possible drivers of resilience in tropical forests as measured in terms of recovery rates from previous disturbances. First, we hypothesize that faster recovery rates are associated with regions of higher biodiversity, as suggested by the insurance hypothesis. And second, that resilience is due to intrinsic abiotic factors that are location specific, thus regions presently displaying resilience in terms of persistence to current climatic disturbances should also show higher recovery rates in the past. To test these hypotheses, we applied a threshold approach to identify past disturbances to forests within each sequence. We then compared the recovery rates to these events with pollen richness before the event. We also compared recovery rates of each site with a measure of present resilience in the region as demonstrated by measuring global vegetation persistence to climatic perturbations using satellite imagery. Preliminary results indeed show a positive relationship between pre-disturbance taxonomic richness and faster recovery rates. However, there is less evidence to support the concept that resilience is intrinsic to a region; patterns of resilience apparent in ecosystems presently are not necessarily conservative through time.

1. Background

In the present context of global change, where ecosystems are likely to be exposed to an increase in disturbances [1], a knowledge of the factors that make ecosystems resilient has become increasingly important. Such knowledge is critical for

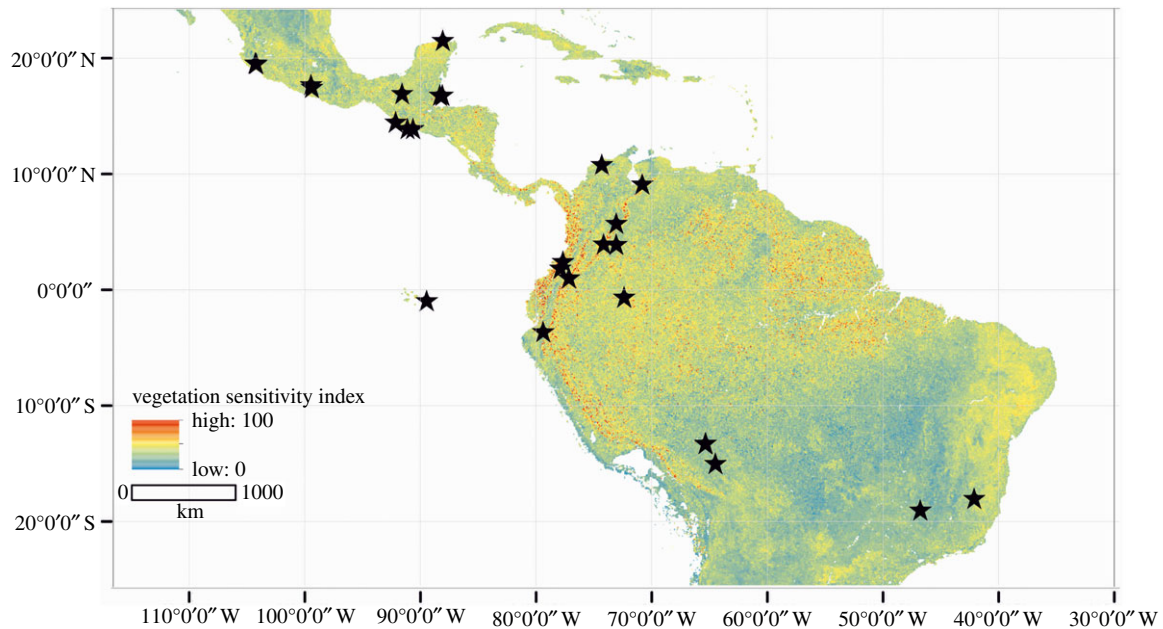


Figure 1. Distribution of study sites (black stars) in Mexico, Central and South America. Sites are displayed on top of a map with the current vegetation sensitivity index (VSI) as identified by Seddon *et al.* [12].

determining landscapes that may be better able to withstand climate change and other environmental disturbances, especially in forested systems, which provide many important ecosystem services [2]. There are two forms of resilience to consider: the first known as ecological resilience [3,4], measured by recovery rates from a disturbance event and calculated in this manuscript, and the second being engineering resilience or persistence [5], referring to how long an ecosystem can withstand a disturbance before changing to an alternative state.

To date, several palaeoecological studies have addressed ecological resilience [6–9], but these have tended to only look at one individual system, and few have attempted regional syntheses to address specific hypotheses regarding the nature and underlying drivers of resilience [6]. In this study, we examined records from 30 high-resolution palaeoecological datasets across Neotropical forest ecosystems. The sites showed evidence of one or more past forest disturbance events, such as fire, hurricanes or anthropogenic impacts, as well as displaying spatial variation in recovery rates to these events. Using these records, we address two hypotheses related to resilience [3]. First, the insurance hypothesis [10], which states that more diverse ecosystems have greater resilience. Second, the hypothesis that resilience is due to a combination of location-specific abiotic factors [11], and thus some locations demonstrate a constancy of resilience through time due to these abiotic features.

2. Methods

(a) Identifying disturbance events

We selected high resolution, well-dated palaeoecological datasets from the Neotropics ([12] figure 1 and table 1) covering the time period from the Late Glacial to the present (i.e. from 13 000 calibrated years before present (cal yr BP)) and spanning a large gradient in vegetation persistence as measured by the vegetation sensitivity index (VSI, [13]). The different forest types under analysis include pine, tropical dry deciduous, tropical semi-deciduous, Andean, Subpáramo, montane, gallery, cloud and rain forests (table 1). To objectively identify disturbance events for each sequence, we applied a threshold method based on the percentage of the sum of

pollen from forest taxa per pollen assemblage zone (PAZ). To achieve this, first, the counts of pollen grains per sample belonging to all terrestrial taxa were square-root transformed [39] and hierarchically clustered through time to determine statistically significant PAZs [40] of the pollen sequences. These analyses were done by using the Rioja package [41] in the R software [42]. For each sequence, percentages of the pollen taxa from the main forest type present within the sequence were summed together. Within each PAZ, mean and standard deviation for the sum of percentages of the forest taxa were calculated. Disturbance events within the sequences were defined as: (1) having a forest percentage sum of less than the mean minus one standard deviation per PAZ (i.e. $< \mu - 1\sigma$, where μ is the mean and σ is the standard deviation), making this our threshold value to identify disturbances, (2) displaying more than one sample within a disturbance event, (3) recording a clear start and end of the disturbance event within the sequence and (4) having a mean temporal resolution below 100 years (see details in electronic supplementary material, S1 and S2). The second criterion was added to reduce the probability of counting stochastic variations in pollen percentage sums as a disturbance event, while clear starting and ending points in criterion 3 refer to local maxima in the arboreal sum before and after disturbance [6].

In a previous study from the tropics that used recovery rates following disturbance in fossil pollen records to measure resilience [6], the recovery rates were defined as a percentage increase of arboreal pollen abundance per year relative to the pre-disturbance level. We applied this previously published equation [6] (equation (2.1); electronic supplementary material, S2),

$$RR = \frac{((F_{\max} - F_{\min}) / (F_{\text{pre}} - F_{\min})) \times 100}{T_{\text{rec}}}, \quad (2.1)$$

which uses the following identifiable points within the sequences: the lowest forest percentage within a disturbance (F_{\min}), the highest forest percentage after recovery (F_{\max}), the percentage sum prior to the disturbance start (F_{pre}) and the time of recovery (T_{rec} , i.e. from F_{\min} to F_{\max}) in calibrated years before present (cal yr BP). We calculated recovery rates per disturbance and mean recovery rates per study site. In addition, in order to assess whether forests recovered to a similar community assemblage as their pre-disturbance state or to a different assemblage, we calculated squared chord distance coefficients [43] between pre- and post-disturbance samples following the approach of

Table 1. Study site details in latitudinal order from North to South.

publication	site	lon	lat	altitude (m.a.s.l.)	forest type	number of disturbances per site
Aragon-Moreno <i>et al.</i> [14]	Ria Lagartos	-88.07	21.58	2	tropical forest with mangroves	2
Figuerola-Rangel <i>et al.</i> [15]	transitional forest	-104.23	19.59	1894	pine-oak dominated forest	1
Figuerola-Rangel <i>et al.</i> [16]	cloud forest	-104.28	19.59	1858	cloud forest	1
Figuerola-Rangel <i>et al.</i> [17]	pine forest	-104.2	19.57	2374	pine forest	2
Berrio <i>et al.</i> [18]	Lake Huitziltepec	-99.47	17.75	1430	dry deciduous forest	3
Berrio <i>et al.</i> [18]	Lake Tixtla	-99.4	17.5	1400	dry deciduous forest	2
Domínguez-Vázquez & Islebe [19]	Naja Lake	-91.59	16.99	800	rain forest	1
Wooler <i>et al.</i> [20]	Twin Cays, TCC2	-88.1	16.83	0	tropical forest with mangroves	3
Neff <i>et al.</i> [21]	TIL	-92.17	14.5	0	tropical forest with mangroves	2
Larmon [22]	Iztapa	-90.66	13.95	4	tropical forest with mangroves	2
Neff <i>et al.</i> [21]	Sipacate - SIP99E	-91.15	13.93	0	tropical forest with mangroves	2
Velez <i>et al.</i> [23]	Boca de Lopez	-74.33	10.85	0	tropical forest with mangroves	1
Rull <i>et al.</i> [24]	Piedras Blancas	-70.83	9.17	4080	subpáramo forest	1
Gomez <i>et al.</i> [25]	Pantano de Vargas	-73.07	5.78	2510	Andean forest	3
vdHammen & Hooghiemstra [26]	Laguna La Primavera	-74.16	3.98	3525	subpáramo forest	6
Berrio <i>et al.</i> [27]	Laguna Mozambique	-73.05	3.96	175	gallery forest	1
Velez <i>et al.</i> [28]	Laguna El Caimito	-77.69	2.45	50	rain forest	3
Behling <i>et al.</i> [29]	Laguna Piusbi	-77.93	1.88	100	rain forest	1
Epping [30]	Laguna la Cocha	-77.15	1.08	2780	Andean forest	4
González-Carranza <i>et al.</i> [31]	Laguna La Cocha	-77.152	1.079	2780	Andean forest	3
Berrio <i>et al.</i> [32]	Quebrada del amor	-72.398	-0.60	242	rain forest	1
Restrepo <i>et al.</i> [33]	El Junco	-89.48	-0.895	679	montane forest	8
Adolf <i>et al.</i> [34]	Laguna Vendada	-79.39	-3.61	3640	subpáramo forest	1
Whitney <i>et al.</i> [35]	Laguna La Frontera	-65.35	-13.23	135	gallery forest	1
Whitney <i>et al.</i> [35]	Laguna El Cerrito	-65.38	-13.25	140	gallery forest	1
Whitney <i>et al.</i> [36]	Laguna San José	-64.5	-14.95	162	gallery forest	1
Enters <i>et al.</i> [37]	Lago Alexio	-42.12	-17.99	390	tropical semi-deciduous forest	1
Leyden <i>et al.</i> [38]	Lagoa Campestre de Salitre	-46.77	-19.0	1016	tropical semi-deciduous forest	1

Bennion *et al.* [44]. Samples with a coefficient of 0 indicate communities that are identical to each other, while those with a coefficient of 2 are completely different. As in [44], we chose the 5th percentile cut-off value of 0.48, below which there is insignificant assemblage change between samples. For more details about dataset selection, chronology, statistics, overall methodology and raw data, please refer to electronic supplementary material, S3 and S4 and [45].

(b) Extracting pollen richness and vegetation sensitivity index for each location and disturbance event

To test the insurance hypothesis, i.e. that more diverse ecosystems have greater resilience, pollen richness, a proxy for vegetation richness [46–49] before each disturbance event was estimated using the counts of pollen belonging to terrestrial taxa and this was compared to recovery rates. We hypothesized that those sites with higher pre-disturbance pollen richness would have faster recovery rates. To reduce the sampling bias that affects richness estimations, which occurs when analysts count different amounts of pollen grains per sample, we performed rarefaction analysis [50] on all sequences by using a minimum pollen sum of 100 grains. We used a generalized linear model with variance weighting by study site to test the relationship between pollen richness and $\log_{10}(x+1)$ -transformed recovery rates. The log transformation was chosen to reduce the effect of outliers [51]. The following variables: richness, latitude, altitude and sample resolution, were included in the initial model and tested for significance and influence on model performance following the Akaike information criterion [52].

To test the abiotic hypothesis, i.e. that resilience is due to a combination of location-specific abiotic factors, we used a linear regression model to test the relationship between spatial patterns in present-day vegetation persistence, as measured by the VSI [13] to recovery rates from the past at the same locations. The VSI quantifies vegetation sensitivity over 14 years (2000–2013) in terms of productivity to solely abiotic factors (i.e. climatic factors such as water availability, air temperature and cloudiness) on a 5 km resolution at the global scale, whereby a high sensitivity value indicates low persistence and vice versa. To link this measure up with longer-term vegetation dynamics as obtained from the fossil pollen sequences extracted from the lake sediments [53], we extracted the VSI value from the point location of the fossil study site from the shapefile version of the VSI by using ArcGIS (v. 10.6), software. We hypothesized that those sites with faster recovery rates in the past also show greater persistence to climatic perturbations from 2000 to 2013. All model calculations were done in the nlme package available in R software [41,54].

3. Results

We analysed 30 sedimentary records from the Neotropics (figure 1) and a total of 59 disturbance events. Three sequences were excluded from further analyses for not meeting the disturbance identification criteria (electronic supplementary material, S1). During the extracted disturbance events, all of these records were sampled at a high temporal resolution, with a mean sample resolution across sequences of one sample every *ca* 40 years (37.7 ± 27.5 years, electronic supplementary material, S1). This high temporal sample resolution is crucial to ensure that the generational change of trees in these forested environments is captured and to reduce the possibility of missing consequent disturbance events. For example, previous studies have identified that it takes between 30 to over a 1000 years for tropical forests to recover following disturbance [6].

The range of recovery rates (in percentage of forest pollen abundance increase per year relative to the levels prior to disturbance) varied from 0.1 to 24.6 (or 0.04 to 1.41 after $\log_{10}(x+1)$ transformation, electronic supplementary material, S5), while pre-disturbance palynological richness values (RichnessPre) ranged between 3.7 to 25.3 different pollen taxa per sample, being highest close to the equator. The range of VSI included in our study went from 8.1, indicating highest persistence to climatic factors to 55.7, displaying lowest persistence to climatic perturbations (electronic supplementary material S1, table 1).

Taking all disturbances together, the variables RichnessPre and the mean temporal resolution of samples within a disturbance (TResolDist) were significant in explaining recovery rates (p -value < 0.001, figure 2*a* and table 2; electronic supplementary material, S6). This indicates that a high sampling resolution may enable a more accurate detection of forest recovery, while a potential earlier recovery might be missed in records that have a longer time interval between samples. Despite this effect of sampling resolution on the calculated recovery rates, RichnessPre still has a significant positive effect on the calculated recovery rates.

Regarding our second hypothesis, there is a slightly negative relationship between mean recovery rates per study site ($\log_{10}(x+1)$ -transformed) and VSI at the corresponding sites (figure 2*b*), which would be in agreement with our second hypothesis. However, VSI was not a significant variable within the linear regression model (table 3).

Our dissimilarity analyses showed that only six of 59 assemblages showed significant change pre- and post-disturbance (figure 2*c*; electronic supplementary material, S1 and table 1). This indicates that forests seemed to recover to a similar composition as found before the disturbance.

4. Discussion

Our study indicates that within our analysed temporal scale of several thousands of years, resilience properties of a system are generally not location specific and seem not to be associated with the unique set of abiotic factors present. Rather, other factors related to the vegetation assemblage itself, such as biodiversity, appear to be more important.

Previous research has already found a positive effect of biodiversity on the resilience of plant communities, however, most of this research has focused on ecosystems with short generation times (i.e. grasslands, agricultural systems) and on recent timescales [55,56]. To our knowledge, this is the first time this relationship has been demonstrated across the Neotropics through time.

Even though the records chosen in this study have not been sampled continuously, the mean resolution of samples within disturbances (*ca* 40 years) roughly corresponds to rates of disturbance i.e. from fire in highly fire prone ecosystems (e.g. fire return intervals of 30 years in Mediterranean ecosystems [57]). In our study of tropical forests, the insurance hypothesis [10], stating that more complex systems recover faster from disturbance, is supported by our results, showing the importance of biodiversity to enable forests to recover from disturbances. Our findings are also in agreement with dynamic simulation modelling results of temperate forest ecosystems, which have previously demonstrated that tree diversity positively influences stable forest productivity over time [58]. Possible explanations as to why biodiversity increases ecosystem's resilience include the

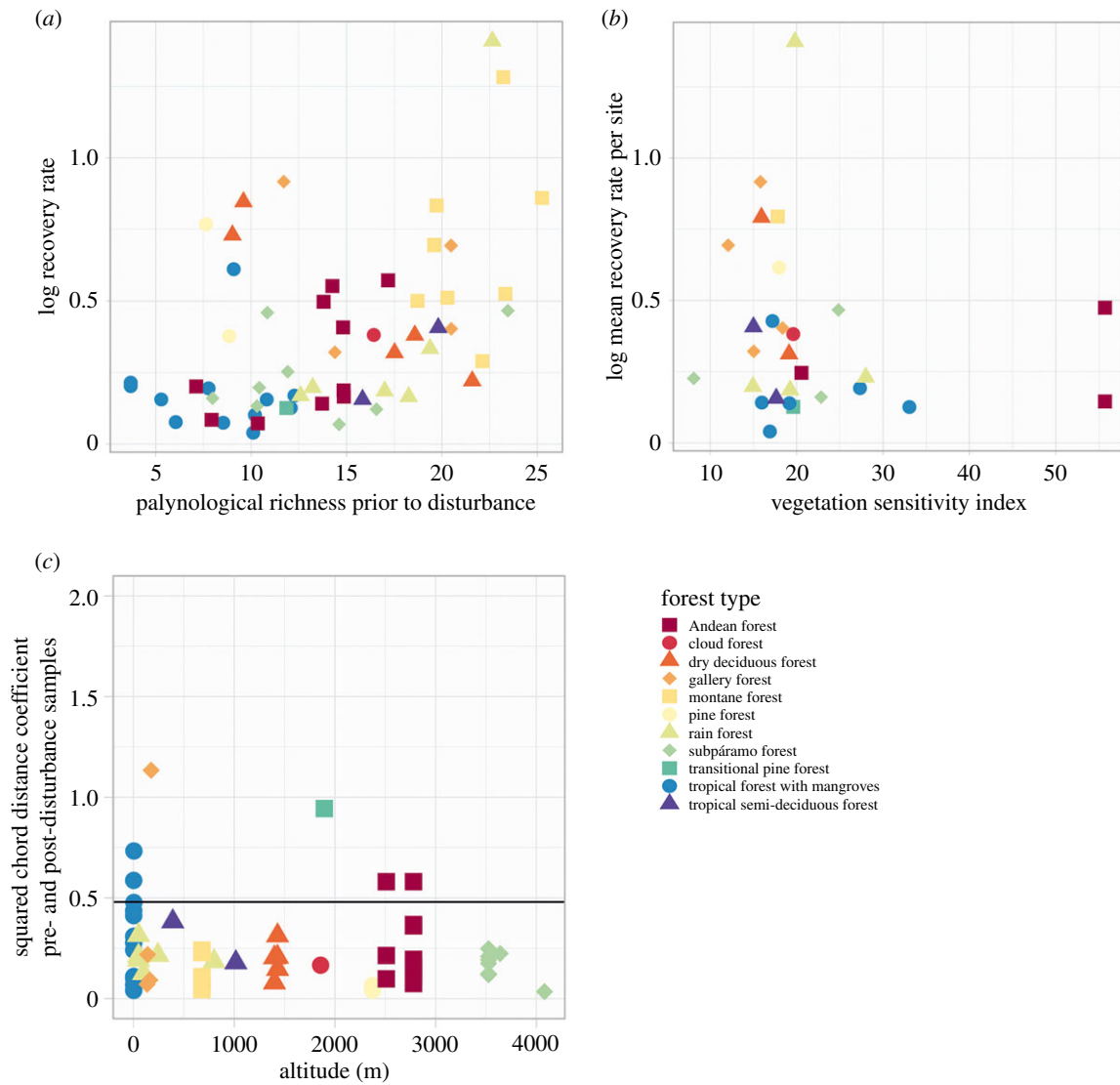


Figure 2. The relationships describing the two hypotheses to be tested. (a) Palynological richness (number of different pollen taxa per sample), as a proxy for vegetation richness, versus recovery rates (percentage of forest pollen abundance increase per year, relative to pre-disturbance levels, $\log_{10}(x+1)$ -transformed). (b) Vegetation sensitivity index (VSI) versus mean recovery rate ($\log_{10}(x+1)$ -transformed) per each study site. (c) Squared chord distance coefficient measuring similarity between pre- and post-disturbance samples along an altitudinal gradient. The horizontal black line represents the 5th percentile cut-off value of 0.48, below which there is insignificant assemblage change between samples.

Table 2. Results of generalized least-squares model to test Hypothesis 1. Model equation: $\log_{10}(\text{RR} + 1) \sim \text{RichnessPre} + \text{TResolDist}$, variance weighted by site (i.e. weights = $\text{var}(\text{form} = \sim 1 \mid \text{site})$ as used in package ‘nlme’ [54] in the R software); $n = 59$. RR, recovery rates; RichnesPre, palynological richness per sample prior to disturbance; TResolDist, mean temporal resolution of samples within a disturbance.

variables	coefficient	standard error	t-value	p-value
intercept	0.3467423	1.261944×10^{-5}	27476.85	<0.001
RichnessPre	0.0067004	5.372250×10^{-7}	12472.26	<0.001
TResolDist	-0.0038703	8.149000×10^{-8}	-47493.63	<0.001

Table 3. Results of linear regression model to test Hypothesis 2. Model equation: $\log_{10}(\text{mRR} + 1) \sim \text{VSI}$. mRR, mean recovery rates per site; VSI, vegetation sensitivity index.

variables	coefficient	standard error	t-value	p-value
intercept	0.475075	0.132312	3.591	0.00135
VSI	-0.004270	0.005505	-0.776	0.44494

positive effect of different responses of species to fluctuations, also taking into account different response speeds [58,59] and the fact that there will be a number of species with similar functions thus able to replace the functions of the species lost [10]. Using long-term data from palaeoecological records, as has been done in this study, could provide important further avenues of research into these relationships by looking, for example, at individual taxon traits in those records that demonstrate faster recovery rates.

The lack of a strong relationship between current vegetation persistence patterns at sites and faster recovery rates in the past, may possibly be explained by shifting ecotone boundaries and baselines. Thus, under different climatic conditions in the past, these boundaries have shifted, as can be seen in changing treeline altitudes through time [60], displacing the physical location at which an ecosystem is more sensitive to change. However, we also need to consider the differences in the temporal scale that affect our analyses. We have compared a VSI based on 14 years of data, which in most cases, will not record a single generation of trees, to recovery rates issuing from forest dynamics covering thousands of years and representing multiple generations. Additionally, differences in the pollen source area from large to small lakes and the pixel size of 5 km² of the VSI data will not always be comparable and smaller-scale abiotic features such as soil type or slope and aspect cannot be reflected on such large pixels. Nevertheless, a result emerging from our study is that the persistence apparent in these ecosystems presently is not necessarily conservative through time. Thus abiotic factors cannot alone be used to explain patterns of resilience; rather our results indicate that pre-disturbance taxonomic diversity is a better indicator of resilience of the system (as measured by recovery rates). This result suggests that conservation management efforts which aim to create resilient ecosystems by maintaining and enhancing biodiversity are a good approach.

References

- Diaz S *et al.* (eds). 2019 Summary for policymakers of the global assessment report on biodiversity and ecosystem services. Bonn, Germany: IPBES. See https://ipbes.net/sites/default/files/2020-02/ipbes_global_assessment_report_summary_for_policymakers_en.pdf.
- Jeffers ES, Nogué S, Willis K. 2015 The role of palaeoecological records in assessing ecosystem services. *Quat. Sci. Rev.* **112**, 17–32. (doi:10.1016/j.quascirev.2014.12.018)
- Pimm SL. 1984 The complexity and stability of ecosystems. *Nature* **307**, 321–326. (doi:10.1038/307321a0)
- Davies AL, Streeter R, Lawson IT, Roucoux KH, Hiles W. 2018 The application of resilience concepts in palaeoecology. *Holocene* **28**, 1523–1534. (doi:10.1177/0959683618777077)
- Holling CS. 1973 Resilience and stability of ecological systems. *Annu. Rev. Ecol. Syst.* **4**, 1–23. (doi:10.1146/annurev.es.04.110173.000245)
- Cole LESS, Bhagwat SA, Willis KJK. 2014 Recovery and resilience of tropical forests after disturbance. *Nat. Commun.* **5**, 3906. (doi:10.1038/ncomms4906)
- Gil-Romera G, Lopez-Merino L, Carrion JS, Gonzalez-Samperiz P, Martin-Puertas C, Lopez Saez JA, Fernandez S, Anton MG, Stefanova V. 2010 Interpreting resilience through long-term ecology: potential insights in western Mediterranean landscapes. *Open Ecol. J.* **3**, 43–53. (doi:10.2174/1874213001003020043)
- Virah-Sawmy M, Gillson L, Willis KJ. 2009 How does spatial heterogeneity influence resilience to climatic changes? Ecological dynamics in southeast Madagascar. *Ecol. Monogr.* **79**, 557–574. (doi:10.1890/08-1210.1)
- Carrion JS, Andrade A, Bennett KD, Navarro C, Munuera M. 2001 Crossing forest thresholds: inertia and collapse in a Holocene sequence from south-central Spain. *Holocene* **11**, 635–653. (doi:10.1191/09596830195672)
- Yachi S, Loreau M. 1999 Biodiversity and ecosystem productivity in a fluctuating environment: the insurance hypothesis. *Proc. Natl Acad. Sci. USA* **96**, 1463–1468. (doi:10.1073/pnas.96.4.1463)
- Schwantes AM, Parolari AJ, Swenson JJ, Johnson DM, Domec JC, Jackson RB, Pelak N, Porporato A. 2018 Accounting for landscape heterogeneity improves spatial predictions of tree vulnerability to drought. *New Phytol.* **220**, 132–146. (doi:10.1111/nph.15274)
- Williams J *et al.* 2018 The Neotoma Paleoecology Database, a multiproxy, international, community-curated data resource. *Quat. Res.* **89**, 156–177. (doi:10.1017/qua.2017.105)
- Seddon AWRR, Macias-Fauria M, Long PR, Benz D, Willis KJK. 2016 Sensitivity of global terrestrial ecosystems to climate variability. *Nature* **531**, 229–232. (doi:10.1038/nature16986)
- Aragón-Moreno AA, Islebe GA, Torrescano-Valle N. 2012 A ~3800-yr, high-resolution record of vegetation and climate change on the north coast of the Yucatan Peninsula. *Rev. Palaeobot. Palynol.* **178**, 35–42. (doi:10.1016/j.revpalbo.2012.04.002)
- Figueroa-Rangel BL, Willis KJ, Olvera-Vargas M. 2012 Late-Holocene successional dynamics in a transitional forest of west-central Mexico. *Holocene* **22**, 143–153. (doi:10.1177/0959683611414929)
- Figueroa-Rangel BL, Willis KJ, Olvera-Vargas M. 2010 Cloud forest dynamics in the Mexican Neotropics during the last 1300 years. *Glob. Change Biol.* **16**, 1689–1704. (doi:10.1111/j.1365-2486.2009.02024.x)
- Figueroa-Rangel BL, Willis KJ, Olvera-Vargas M. 2008 4200 years of pine-dominated forest dynamics in the uplands of western-central Mexico: a human or natural legacy? *Ecology* **89**, 1893–1907. (doi:10.1890/07-0830.1)
- Berrio JC, Hooghiemstra H, Van Geel B, Ludlow-Wiechers B. 2006 Environmental history of the dry forest biome of Guerrero, Mexico, and human impact during the last c. 2700 years. *Holocene* **16**, 63–80. (doi:10.1191/0959683606h1905rp)
- Dominguez-Vázquez G, Islebe GA. 2008 Protracted drought during the late Holocene in the Lacandon rain forest, Mexico. *Veg. Hist. Archaeobot.* **17**, 327–333. (doi:10.1007/s00334-007-0131-9)
- Wooler MJ, Morgan R, Fowell S, Behling H, Fogel M. 2007 A multiproxy peat record of Holocene mangrove palaeoecology from Twin Cays, Belize. *Holocene* **17**, 1129–1139. (doi:10.1177/0959683607082553)

5. Conclusion

We have identified biodiversity of forests to be important for their resilience, highlighting the necessity of promoting diverse ecosystems to ensure their provision of ecosystem services in a changing environment. Additionally, further research into which vegetation traits are associated with resilient ecosystems would be an important step towards managing resilient ecosystems for the future, as well as further insights into ecosystem stability.

Data accessibility. All R scripts and parts of datasets (details on accessing Neotoma datasets are in the electronic supplementary material) used for analyses are available under: <https://doi.org/10.5061/dryad.xwdbvr19c> [45]. Description of the datasets can be found in electronic supplementary material, S7.

Authors' contributions. K.J.W. and C.A. conceived the study and lead the writing process; C.A. performed numerical analyses and wrote the R code with assistance and data-interpretation input from C.T. and N.K., H.B., J.C.B., G.D.-V., B.F.-R., Z.G.-C., G.A.L., H.H., H.N., M.O.-V., B.W. and M.J.W. provided their datasets along with interpretation advice. All authors made important contributions to the final manuscript. All authors agree to be held accountable for the manuscript's content and have approved its final version.

Competing interests. We declare we have no competing interests.

Funding. This research was funded by grant no. P2BEP2_178414 to C.A. by the Swiss National Science Foundation.

Acknowledgements. We are grateful to all authors that have made their data available on Neotoma, to Peter Long for his help with the VSI index shapefile, to Dirk Enters for his advice regarding the record of Lago Alexio and to Daniele Colombaroli for sharing parts of his R-code [49] for diversity calculations.

21. Neff H, Pearsall DM, Jones JG, Arroyo B, Collins SK, Freidel DE. 2006 Early Maya adaptive patterns: mid-late Holocene paleoenvironmental evidence from Pacific Guatemala. *Lat. Am. Antiq.* **17**, 287–315. (doi:10.2307/25063054)
22. Larmon JT. 2013 The Pacific coast of Guatemala: a palynological investigation of climate change and human occupation. Master's thesis. Washington State University, Pullman, Washington, USA.
23. Velez MI, Escobar J, Brenner M, Rangel O, Betancourt A, Jaramillo AJ, Curtis JH, Moreno JL. 2014 Middle to late Holocene relative sea level rise, climate variability and environmental change along the Colombian Caribbean coast. *Holocene* **24**, 898–907. (doi:10.1177/0959683614534740)
24. Rull V, Salgado-Labouriau ML, Schubert C, Valastro S. 1987 Late holocene temperature depression in the Venezuelan Andes: palynological evidence. *Palaeogeogr. Palaeoclimatol. Palaeoecol.* **60**, 109–121. (doi:10.1016/0031-0182(87)90027-7)
25. Gómez A, Berrío JC, Hooghiemstra H, Becerra M, Marchant R. 2007 A holocene pollen record of vegetation change and human impact from Pantano de Vargas, an intra-Andean basin of Duitama, Colombia. *Rev. Palaeobot. Palynol.* **145**, 143–157. (doi:10.1016/j.revpalbo.2006.10.002)
26. Van Der Hammen T, Hooghiemstra H. 1995 The EL abra stadial, a younger dryas equivalent in Colombia. *Quat. Sci. Rev.* **14**, 841–851. (doi:10.1016/0277-3791(95)00066-6)
27. Berrío JC, Hooghiemstra H, Behling H, Botero P, Van der Borg K. 2002 Late-Quaternary savanna history of the Colombian Llanos Orientales from Lagunas Chenevo and Mozambique: a transect synthesis. *Holocene* **12**, 35–48. (doi:10.1191/0959683602h1518rp)
28. Velez MI, Wille M, Hooghiemstra H, Metcalfe S, Vandenberghe J, Van Der Borg K. 2001 Late holocene environmental history of southern Chocó region, Pacific Colombia; sediment, diatom and pollen analysis of core El Caimito. *Palaeogeogr. Palaeoclimatol. Palaeoecol.* **173**, 197–214. (doi:10.1016/S0031-0182(01)00322-4)
29. Behling H, Hooghiemstra H, Negret AJ. 1998 Holocene history of the Choco rain forest from Laguna Piusbi, southern Pacific lowlands of Colombia. *Quat. Res.* **50**, 300–308. (doi:10.1006/qres.1998.1998)
30. Epping I. 2009. Environmental change in the Colombian upper forest belt. Master's thesis. University of Amsterdam, Amsterdam, The Netherlands.
31. González-Carranza Z, Hooghiemstra H, Vélez MI. 2012 Major altitudinal shifts in Andean vegetation on the Amazonian flank show temporary loss of biota in the Holocene. *Holocene* **22**, 1227–1241. (doi:10.1177/0959683612451183)
32. Berrío JC, Arbeláez MV, Duivenvoorden JF, Cleef AM, Hooghiemstra H. 2003 Pollen representation and successional vegetation change on the sandstone plateau of Aracuara, Colombian Amazonia. *Rev. Palaeobot. Palynol.* **126**, 163–181. (doi:10.1016/S0034-6667(03)00083-6)
33. Restrepo A, Colinvaux P, Bush M, Correa-Metrio A, Conroy J, Gardener MR, Jaramillo P, Steinitz-Kannan M, Overpeck J. 2012 Impacts of climate variability and human colonization on the vegetation of the Galápagos Islands. *Ecology* **93**, 1853–1866. (doi:10.1890/11-1545.1)
34. Adolf C, Behling H, Erler R, Tinner W. 2011 A new High-Andean Postglacial record of climatic and human influence on vegetation in Southern Ecuador. Master's thesis, University of Bern, Bern, Switzerland.
35. Whitney BS, Dickau R, Mayle FE, Walker JH, Soto JD, Iriarte J. 2014 Pre-Columbian raised-field agriculture and land use in the Bolivian Amazon. *Holocene* **24**, 231–241. (doi:10.1177/0959683613517401)
36. Whitney BS, Dickau R, Mayle FE, Soto JD, Iriarte J. 2013 Pre-Columbian landscape impact and agriculture in the Monumental Mound region of the Llanos de Moxos, lowland Bolivia. *Quat. Res. (United States)* **80**, 207–217. (doi:10.1016/j.yqres.2013.06.005)
37. Enters D, Behling H, Mayr C, Dupont L, Zolitschka B. 2010 Holocene environmental dynamics of south-eastern Brazil recorded in laminated sediments of Lago Aleixo. *J. Paleolimnol.* **44**, 265–277. (doi:10.1007/s10933-009-9402-z)
38. Leyden BW, Brenner M, Whitmore TJ, Curtis JH, Piperno DR, Dahlin BH. 1996 A record of long- and short-term climatic variation from northwest Yucatan: Cenote San Jose Chulchaca. In *The managed mosaic: ancient Maya agriculture and resource use* (ed. SL Fedick), pp. 30–50. Salt Lake City, Utah: University of Utah Press.
39. Legendre P, Birks HJB. 2012. Clustering and partitioning. In *Tracking environmental change using lake sediments. Developments in Paleoenvironmental Research*, vol 5 (eds HJB Birks, AF Lotter, S Juggins, JP Smol), pp. 167–200. Dordrecht, The Netherlands: Springer.
40. Birks HJB, Gordon AD. 1985 *Numerical methods in quaternary pollen analysis*. New York, NY: Academic Press. See <https://books.google.co.uk/books?id=o7yzAAAIAAJ>.
41. Juggins S. 2017 rioja: Analysis of Quaternary science data. R package version 0.9-15. See <http://www.staff.ncl.ac.uk/stephen.juggins/>.
42. R Core Team. 2016 *R: a language and environment for statistical computing*. Vienna, Austria: R Foundation for Statistical Computing.
43. Overpeck JT, Webb T, Prentice IC. 1985 Quantitative interpretation of fossil pollen spectra: dissimilarity coefficients and the method of modern analogs. *Quat. Res.* **23**, 87–108. (doi:10.1016/0033-5894(85)90074-2)
44. Bennion H, Fluin J, Simpson GL. 2004 Assessing eutrophication and reference conditions for Scottish freshwater lochs using subfossil diatoms. *J. Appl. Ecol.* **41**, 124–138. (doi:10.1111/j.1365-2664.2004.00874.x)
45. Adolf C *et al.* 2020 Data from: Identifying drivers of forest resilience in long-term records from the Neotropics. Dryad Digital Repository. (doi:10.5061/dryad.xwdbvr19c)
46. Birks HJB, Felde VA, Bjune AE, Grytnes JA, Seppä H, Giesecke T. 2016 Does pollen-assembly richness reflect floristic richness? A review of recent developments and future challenges. *Rev. Palaeobot. Palynol.* **228**, 1–25. (doi:10.1016/j.revpalbo.2015.12.011)
47. Felde VA, Peglar SM, Bjune AE, Grytnes J-A, Birks HJB. 2015 Modern pollen-plant richness and diversity relationships exist along a vegetational gradient in southern Norway. *Holocene* **26**, 163–175. (doi:10.1177/0959683615596843)
48. Birks HJB. 2007 Estimating the amount of compositional change in late-quaternary pollen-stratigraphical data. *Veg. Hist. Archaeobot.* **16**, 197–202. (doi:10.1007/s00334-006-0079-1)
49. Colombaroli D, Tinner W. 2013 Determining the long-term changes in biodiversity and provisioning services along a transect from Central Europe to the Mediterranean. *Holocene* **23**, 1625–1634. (doi:10.1177/0959683613496290)
50. Birks HJB, Line JM. 1992 The use of rarefaction analysis for estimating palynological richness from quaternary pollen-analytical data. *Holocene* **2**, 1–10. (doi:10.1177/095968369200200101)
51. Zuur AF, Ieno EN, Walker N, Saveliev AA, Smith GM. 2009 *Mixed effects models and extensions in ecology with R*. New York, NY: Springer.
52. Akaike H. 1973 Information theory as an extension of the maximum likelihood principle. In *Second international symposium on information theory* (eds BN Petrov, F Saki), pp. 267–281. Budapest, Hungary: Akadémiai Kiadó.
53. Sugita S. 1994 Pollen representation vegetation in in quaternary of vegetation: theory and method in Patchy vegetation. *J. Ecol.* **82**, 881–897. (doi:10.2307/2261452)
54. Pinheiro J, Bates D, DebRoy S, Sarkar D, R Core Team. 2017. nlme: Linear and nonlinear mixed effects models. R package version 3.1-13. See <https://CRAN.Rproject.org/package=nlme>.
55. Hooper DU *et al.* 2005 Effects of biodiversity on ecosystem functioning: a consensus of current knowledge. *Ecol. Monogr.* **75**, 3–35. (doi:10.1890/04-0922)
56. Cardinale BJ *et al.* 2009 Effects of biodiversity on the functioning of ecosystems: a summary of 164 experimental manipulations of species richness. *Ecology* **90**, 854–854. (doi:10.1890/08-1584.1)
57. Vázquez A, Vélez R. 1998 Recent history of forest fires in Spain. In *Large forest fire* (ed. JM Moreno), pp. 159–185. Leiden, The Netherlands: Backhuys Publishers.
58. Morin X, Fahse L, de Mazancourt C, Scherer-Lorenzen M, Bugmann H. 2014 Temporal stability in forest productivity increases with tree diversity due to asynchrony in species dynamics. *Ecol. Lett.* **17**, 1526–1535. (doi:10.1111/ele.12357)
59. Loreau M, de Mazancourt C. 2013 Biodiversity and ecosystem stability: a synthesis of underlying mechanisms. *Ecol. Lett.* **16**, 106–115. (doi:10.1111/ele.12073)
60. Tinner W, Theurillat J-P. 2003 Uppermost limit, extent, and fluctuations of the timberline and treeline Ecocline in the Swiss Central Alps during the past 11 500 Years. *Arctic, Antarct. Alp. Res.* **35**, 158–169. (doi:10.1657/1523-0430(2003)035[0158:uleafo]2.0.co;2)