


RESEARCH ARTICLE

Open Access



Relation between quantity and quality of peri-coronary epicardial adipose tissue and its underlying hemodynamically significant coronary stenosis

Yu Du^{1†}, Lin Yang^{2†}, Yan Liu¹, Bangguo Yang³, Sai Lv¹, Chenping Hu¹, Yong Zhu¹, Hongkai Zhang², Qian Ma¹, Zhijian Wang¹, Yuyang Liu¹, Dongmei Shi¹, Yingxin Zhao¹, Lei Xu² and Yujie Zhou^{1*} 

Abstract

Background: We aimed to investigate the association of lesion-specific epicardial adipose tissue (EAT) volume and density with the presence of myocardial ischemia.

Methods: We enrolled 45 patients (55 lesions) with known or suspected coronary artery disease who underwent coronary computed tomography angiography (CTA) followed by invasive fractional flow reserve (FFR) assessment within 30 days. EAT volume (index) and density in patient-, vessel- and lesion-level were measured on CTA images. Lesion-specific ischemia was defined as a lesion with stenosis diameter > 90% or FFR ≤ 0.80. Multivariate analysis determined the independent association of EAT parameters with lesion-specific ischemia.

Results: Mean age of the patients was 60 years, and 75% were male. Overall, 55.6% of patients had ischemic lesions and a mean FFR baseline value of 0.82 ± 0.10 . Total EAT volume index was significantly higher in patients with functionally or anatomically significant stenosis. Specifically, peri-lesion EAT volume index, not the density, was positively correlated with lesion-specific ischemia independent of luminal stenosis and plaque characteristics (hazard ratio 1.56, 95% confidence interval 1.04–2.33, $P = 0.032$; per 0.1 ml/m² increase). Moreover, peri-lesion EAT volume was negatively correlated with lesion FFR values, whereas total EAT volume was positively correlated with fat accumulation and glucose metabolism. In addition, there was no association of EAT volume or density with myocardial ischemia in vessel-level analysis.

Conclusions: Lesion-specific EAT volume index, but not density, seems positively and independently associated with myocardial ischemia, while its incremental diagnostic value of lesion-specific ischemia should be further investigated.

Keywords: Epicardial adipose tissue, Coronary stenosis, Myocardial ischemia, Volume, Density

* Correspondence: azyj12@163.com

[†]Yu Du and Lin Yang contributed equally to this work.

¹Department of Cardiology, Beijing Anzhen Hospital, Capital Medical University, Beijing Institute of Heart Lung and Blood Vessel Disease, Beijing Key Laboratory of Precision Medicine of Coronary Atherosclerotic Disease, Clinical center for coronary heart disease, Capital Medical University, Beijing 100029, China

Full list of author information is available at the end of the article



© The Author(s). 2020 **Open Access** This article is licensed under a Creative Commons Attribution 4.0 International License, which permits use, sharing, adaptation, distribution and reproduction in any medium or format, as long as you give appropriate credit to the original author(s) and the source, provide a link to the Creative Commons licence, and indicate if changes were made. The images or other third party material in this article are included in the article's Creative Commons licence, unless indicated otherwise in a credit line to the material. If material is not included in the article's Creative Commons licence and your intended use is not permitted by statutory regulation or exceeds the permitted use, you will need to obtain permission directly from the copyright holder. To view a copy of this licence, visit <http://creativecommons.org/licenses/by/4.0/>. The Creative Commons Public Domain Dedication waiver (<http://creativecommons.org/publicdomain/zero/1.0/>) applies to the data made available in this article, unless otherwise stated in a credit line to the data.

Background

Epicardial adipose tissue (EAT) is a specific fat depot between the myocardium and the visceral pericardium, mainly surrounding major epicardial coronary arteries or within the myocardium [1]. Numerous studies showed that the accumulation of EAT is closely associated with the presence and severity of coronary artery disease (CAD), myocardial ischemia, plaque vulnerability, and major adverse cardiovascular events (MACE) [2–5]. However, not all patients with increased EAT volume develop CAD and vice versa.

To further explain the relation between EAT and CAD, the following two factors are attracting much attention. The first one is peri-coronary EAT, because there is close cross-talk between this focal metabolically active EAT and its underlying coronary wall via a paracrine pathway [6]. External administration of interleukin 1 β or monocyte chemoattractant protein 1 to porcine coronary arteries led to coronary wall inflammation and atherosclerosis formation [7, 8], while surgical removal of peri-coronary EAT ameliorated the progression of coronary atherosclerosis in the pigs [9]. The second important factor is EAT quality, shown as fat attenuation on computed tomography (CT), which reveals adipocyte lipid content and size, reflecting a metabolic response to cardiovascular risk factors [10]. Antonopoulos et al. found that the peri-coronary EAT attenuation index can expose vascular inflammation, subclinical coronary atherosclerosis, and vulnerable plaque [11] and even independently predict cardiac mortality [12].

Accordingly, it is theoretically feasible to determine the hemodynamic significance and vulnerability of coronary stenosis by simply measuring peri-coronary EAT quantity or quality via coronary computed tomography angiography (CTA) in high-risk CAD patients before hospitalization. Therefore, in this hypothesis-generating study, we aimed to investigate the association of lesion-specific EAT volume or attenuation with the functional significance of coronary stenosis on a hospital-based Chinese population.

Methods

Study patients

We retrospectively screened 134 consecutive patients who underwent coronary CTA and invasive fractional flow reserve (FFR) assessment for known or suspected CAD between June 2015 and June 2018 in our center. Exclusion criteria included the presence of acute coronary syndrome (ACS) within the past 30 days; a history of myocardial revascularization or old myocardial infarction; presence of co-morbidities (i.e., heart failure, atrial fibrillation, insulin-dependent diabetes, severe lipoprotein disorders, chronic liver or renal disease, inflammatory disease, malignancy); coronary CTA not performed

within 30 days before FFR evaluation or technical failure to measure FFR or EAT parameters; presence of three-vessel disease, left main or chronic totally occluded lesions, or any intermediate lesions on main branch not measured by FFR. In addition, in lesion-level analysis, the following FFR-measured lesions were excluded: ostial lesions; lesions in a distal segment of a vessel; bifurcation lesions; side-branch lesions; extensively calcified or tortuous lesions. The study protocol conformed to the Declaration of Helsinki and was approved by the ethics committee of Beijing Anzhen Hospital of Capital Medical University. Written informed consent was obtained from each patient.

CT imaging

CT imaging was performed using a dual-source 128-slice CT scanner (Somatom Definition Flash, 280-ms rotation, 2 \times 128 \times 0.6 collimation; Siemens Healthcare, Forchheim, Germany). Contrast-enhanced scanning and reconstruction protocols were as previously described [13]. In this study, we enrolled only patients with contrast-enhanced scans obtained at 120-kV tube voltage and with a z-axis scan range at least from the pulmonary artery bifurcation to the ventricular apex. We obtained the location, length, volume, and classification of coronary plaque on CTA images. Plaque was classified as calcified or non-calcified. Calcified plaque referred to lesions composed exclusively of structures with a CT attenuation higher than that of the contrast-enhanced coronary lumen in at least two planes. Non-calcified plaque was defined as lesions clearly assignable to the vessel wall (in at least two views) with an attenuation lower than that of the contrast-enhanced lumen.

EAT volume and density quantification

EAT volume and density were quantified offline from CTA images using cardiac risk analysis software (Siemens, Erlangen, Germany) and a computer workstation (MMWP, Siemens Healthcare). CT attenuation range of EAT was set between -190 Hounsfield Unit (HU) and -30 HU. Assessment of total EAT (ranging from the bifurcation of the pulmonary artery to the end slice of the left ventricular apex, from the outer wall of the myocardium to the visceral pericardium) volumes were according to region of interests (ROIs) on all axial imaging planes that were semi-automatically delineated (every 5 mm interval), and then manually adjusted to modify and track the silhouette of the EAT on every slice (Fig. 1a) [14]. Peri-vessel EAT (veEAT) (surrounding from the ostium to the end of each major epicardial coronary artery within the interventricular or atrioventricular groove, respectively) volumes were manually delineated according to ROIs on all axial imaging slices (every 5 mm interval) (Fig. 1b) [15]. While, peri-lesion

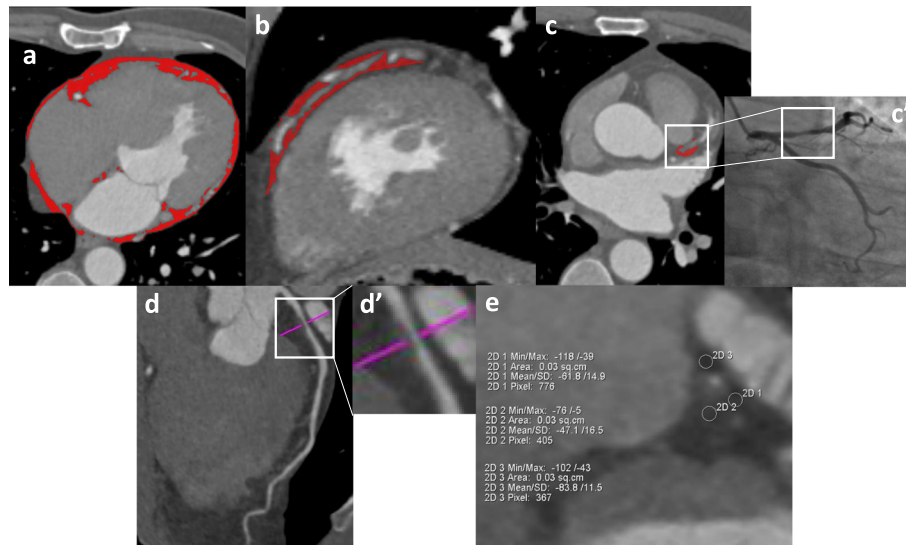


Fig. 1 Measurements of EAT quantity and quality on coronary CTA images. Cross-sectional image for volume measurement of total EAT (a), perivessel EAT (b), and peri-lesion EAT (c). Location and length of study coronary lesion were double checked using CTA (c) and corresponding angiographic images (c'). ROIs are stained red. The narrowest location in diameter stenosis of study lesion were determined in (d) and (d'). According to the most severe diameter stenotic cross-sectional CTA image (e), peri-lesion EAT density was the average CT attenuation of peri-lesion EAT. EAT, epicardial adipose tissue; CTA, computed tomography angiography; ROI, region of interest

EAT (leEAT) was a part of veEAT, which covered the vessel segment containing the full length of study coronary lesion, and leEAT volumes were calculated by ROIs on each axial imaging slice (every 1 mm interval) (Fig. 1c) [16]. Volume index was defined as volume (ml) divided by body surface area (BSA, m²).

We also obtained leEAT density by using manual measurement, defined as the mean value of three or more circular ROIs (each ROI area = 0.03 cm²) surrounding the cross-sectional slice of the study lesion with the most severe diameter stenosis (Fig. 1d, d'). The location of ROIs was required to be more than 1 mm from the adventitia of the coronary artery to reduce the influence of luminal contrast on leEAT density (Fig. 1e) [14]. Correspondingly, the veEAT density—defined as EAT CT attenuation of the proximal and distal reference segments adjacent to the stenotic segment and free from stenosis—was measured and used as the reference veEAT density. All EAT parameter measurements were performed repeatedly by an experienced CT reader, who was blinded to the clinical characteristics of the patients and the functional significance of the coronary stenosis. Intra-observer reproducibility was excellent [intraclass correlation coefficient 0.95, 95% confidence interval (CI) 0.90–0.97, $P < 0.001$].

Coronary angiography and fractional flow reserve

All patients underwent coronary angiography according to standard clinical protocols. CAD was diagnosed by the presence of at least one coronary artery stenosed

> 50% in diameter stenosis on coronary angiography. Stenosis causing 30–90% coronary lumen reduction were evaluated by invasive FFR. A lesion with luminal stenosis $\geq 75\%$ was defined as significantly stenosis. A lesion diameter with > 90% stenosis or FFR ≤ 0.80 indicated hemodynamic significance. Invasive FFR was measured using a coronary pressure wire (Volcano, Rancho Cordova, CA, USA or St Jude Medical, Minneapolis, MN, USA), as described previously [17]. In this study, maximum hyperemia was induced by intravenous administration of adenosine triphosphate (140–180 $\mu\text{g}/\text{kg}/\text{min}$) via the forearm vein. The decision for revascularization was left to the operator's discretion.

Statistical analysis

Continuous variables were expressed as means \pm standard deviation, or the median (lower quartile, upper quartile), where indicated. Mean values were compared using Student's t test and median values using the Mann–Whitney U test. Categorical variables were expressed as percentages and analyzed using the chi-square test or Fisher's exact test where appropriate. The correlations of EAT parameters with clinical characteristics were evaluated using Spearman's correlation analysis. Univariate and multivariate analyses were performed to determine the independent predictors for hemodynamically significant coronary stenosis. $P < 0.05$ was considered to indicate statistical significance. All statistical analyses were performed using SPSS 22.0 software (IBM, Armonk, NY, USA).

Results

A total of 45 patients were enrolled in patient-level analysis. The study flow chart is shown in Supplementary Figure S1. As shown in Table 1, the mean age of the patients was 60 years, 75% were male, and 67% had one-

vessel disease. The mean time between coronary CTA and invasive angiography and FFR was 11 days. In all, 68 lesions had a diameter stenosed $\geq 30\%$. Among them, FFR was performed on 65 (96%) lesions. Three lesions with diameters stenosis $> 90\%$ were not measured by

Table 1 Baseline characteristics of study patients according to the presence of ischemia lesion

	Total (n = 45)	Non-ischemia patient (n = 20)	Ischemia patient (n = 25)	P value
Clinical variable				
Age (years)	59.6 \pm 4.7	58.2 \pm 4.8	60.7 \pm 4.4	0.073
Male	34 (75.6)	13 (65.0)	21 (84.0)	0.176
Body weight (kg)	73.8 \pm 11.1	74.7 \pm 13.5	73.1 \pm 9.0	0.649
Height (m)	1.69 \pm 0.08	1.69 \pm 0.09	1.70 \pm 0.07	0.689
BMI (kg/m ²)	25.7 \pm 2.8	26.1 \pm 3.2	25.4 \pm 2.4	0.382
BSA (m ²)	1.86 \pm 0.18	1.86 \pm 0.21	1.85 \pm 0.14	0.818
Hypertension	26 (57.8)	10 (50.0)	16 (64.0)	0.379
Diabetes mellitus	13 (28.9)	3 (15.0)	10 (40.0)	0.100
Hypercholesterolemia	15 (33.3)	6 (30.0)	9 (36.0)	0.757
Current smoking	17 (37.8)	5 (25.0)	12 (48.0)	0.135
PAD or stroke	3 (6.7)	2 (10.0)	1 (4.0)	0.577
Family history of CAD	5 (11.1)	2 (10.0)	3 (12.0)	1.000
LVEF (%)	65.2 \pm 5.3	66.4 \pm 5.6	64.2 \pm 5.0	0.181
Procedural variable				
Time interval (day)	11.3 \pm 8.4	12.9 \pm 9.2	10.1 \pm 7.7	0.304
No. of diseased vessels				0.005
0-vessel disease ^a	2 (4.4)	2 (10.0)	0	
1-vessel disease	30 (66.7)	17 (85.0)	13 (52.0)	
2-vessel disease	7 (15.6)	1 (5.0)	6 (24.0)	
3-vessel disease	6 (13.3)	0	6 (24.0)	
No. of lesions per-patient	1.51 \pm 0.73	1.15 \pm 0.37	1.80 \pm 0.82	0.003
No. of ischemia lesions per-patient	0.67 \pm 0.71	0	1.20 \pm 0.50	< 0.001
No. of significantly stenotic lesions per-patient	0.47 \pm 0.59	0.15 \pm 0.37	0.72 \pm 0.61	0.001
No. of significantly stenotic patients	19 (42.2)	3 (15.0)	16 (64.0)	0.002
Coronary intervention	13 (28.9)	0	13 (52.0)	< 0.001
No. of stents	0.36 \pm 0.61	0	0.64 \pm 0.70	< 0.001
Length of stents	9.04 \pm 15.66	0	16.3 \pm 18.1	< 0.001
EATparameter				
Total EAT volume (ml)	89.6 (73.4, 122.8)	84.0 (64.7, 110.5)	102.0 (74.7, 139.8)	0.077
Total EAT volume index (ml/m ²)	49.8 (40.5, 64.4)	47.6 (35.1, 55.4)	53.4 (43.1, 71.6)	0.032
Medications on discharge				
Aspirin	42 (93.3)	18 (90.0)	24 (96.0)	0.577
Clopidogrel	27 (60.0)	11 (55.0)	16 (64.0)	0.760
Statin	37 (82.2)	15 (75.0)	22 (88.0)	0.435
ACEI/ARB	18 (40.0)	6 (30.0)	12 (48.0)	0.359
Nitrates	28 (62.2)	8 (40.0)	20 (80.0)	0.012

BMI body mass index, BSA body surface area, PAD peripheral artery disease, CAD coronary artery disease, LVEF left ventricular ejection fraction, EAT epicardial adipose tissue, ACEI angiotensin-converting enzyme inhibitor, ARB Angiotensin II receptor blocker

^aindicated at least one lesion with angiographic diameter stenosis of 30–49% in major epicardial coronary artery

FFR. After screening, 55 lesions were enrolled in lesion-level analysis. As shown in Table 2, most of lesions were located in the left anterior descending (LAD) coronary artery (71%) or its middle segments (66%). Nearly half of the lesions had intermediate stenosis (49%), and 62% had calcified plaque. The mean pre-operative FFR value was 0.82. Ischemic lesions accounted for 47%, and eventually 29% of patients (22%

of lesions) underwent percutaneous coronary intervention (PCI).

EAT volume and myocardial ischemia in patient-level analysis

Patients were divided into non-ischemia and ischemia groups based on the presence of at least one hemodynamically relevant lesion (44 and 56%,

Table 2 Baseline characteristics of study lesions according to the presence of ischemia

	Total (n = 55)	Non-ischemia lesion (n = 29)	Ischemia lesion (n = 26)	P value
Lesion parameter				
Location				0.350
LAD	39 (70.9)	18 (62.1)	21 (80.8)	
LCX	4 (7.3)	3 (10.3)	1 (3.8)	
RCA	12 (21.8)	8 (27.6)	4 (15.4)	
Segment				0.584
Proximal	19 (34.5)	9 (31.0)	10 (38.5)	
Middle	36 (65.5)	20 (69.2)	16 (61.5)	
Reference vessel diameter (mm)				
Proximal	3.9 ± 0.5	4.0 ± 0.5	3.9 ± 0.5	0.341
Distal	3.0 ± 0.5	3.1 ± 0.6	2.8 ± 0.4	0.069
Stenosis severity				< 0.001
30 ~ 49%	6 (10.9)	6 (20.7)	0	
50 ~ 74%	27 (49.1)	18 (62.1)	9 (34.6)	
≥ 75%	22 (40.0)	5 (17.2)	17 (65.4)	
Plaque length (mm)	14.2 (11.1, 20.2)	12.9 (10.8, 16.7)	19.3 (12.0, 21.5)	0.028
Plaque volume (mm ³)	139.0 (81.0, 192.0)	118.0 (76.0, 161.0)	156.5 (84.8, 220.3)	0.159
Plaque type				0.405
Non-calcified	21 (38.2)	13 (44.8)	8 (30.8)	
Calcified	34 (61.8)	16 (55.2)	18 (69.2)	
EAT parameter				
veEAT volume (ml)	7.14 (4.93, 9.18)	7.20 (4.98, 8.54)	6.89 (4.75, 10.57)	0.607
veEAT volume index (ml/m ²)	3.80 (2.62, 4.70)	3.80 (2.67, 4.26)	3.83 (2.38, 5.87)	0.508
leEAT volume (ml)	0.57 (0.35, 0.72)	0.50 (0.32, 0.66)	0.64 (0.37, 1.07)	0.051
leEAT volume index (ml/m ²)	0.30 (0.20, 0.40)	0.27 (0.19, 0.35)	0.34 (0.20, 0.53)	0.045
veEAT density (HU)				
Proximal reference vessel	-72.91 ± 10.56	-71.94 ± 9.60	-74.00 ± 11.63	0.475
Distal reference vessel	-90.86 ± 11.82	-90.40 ± 9.65	-91.38 ± 14.04	0.763
leEAT density (HU)	-77.32 ± 11.63	-76.54 ± 12.71	-78.23 ± 10.44	0.600
Procedural variable				
Pre-procedural FFR ^a	0.82 ± 0.10	0.89 ± 0.05	0.74 ± 0.08	< 0.001
Coronary intervention	12 (21.8)	0	12 (46.2)	< 0.001
No. of stents per-lesion	0.24 ± 0.47	0	0.50 ± 0.58	< 0.001
Length of stents	6.38 ± 12.91	0	13.50 ± 16.12	< 0.001
Diameter of stents	0.72 ± 1.38	0	1.52 ± 1.69	< 0.001

LAD left anterior descending, LCX left circumflex, RCA right coronary artery, EAT epicardial adipose tissue, veEAT peri-vessel epicardial adipose tissue, leEAT peri-lesion epicardial adipose tissue, FFR fractional flow reserve

^aindicated FFR was not measured in three lesions of the ischemia group because of angiographically severe stenosis

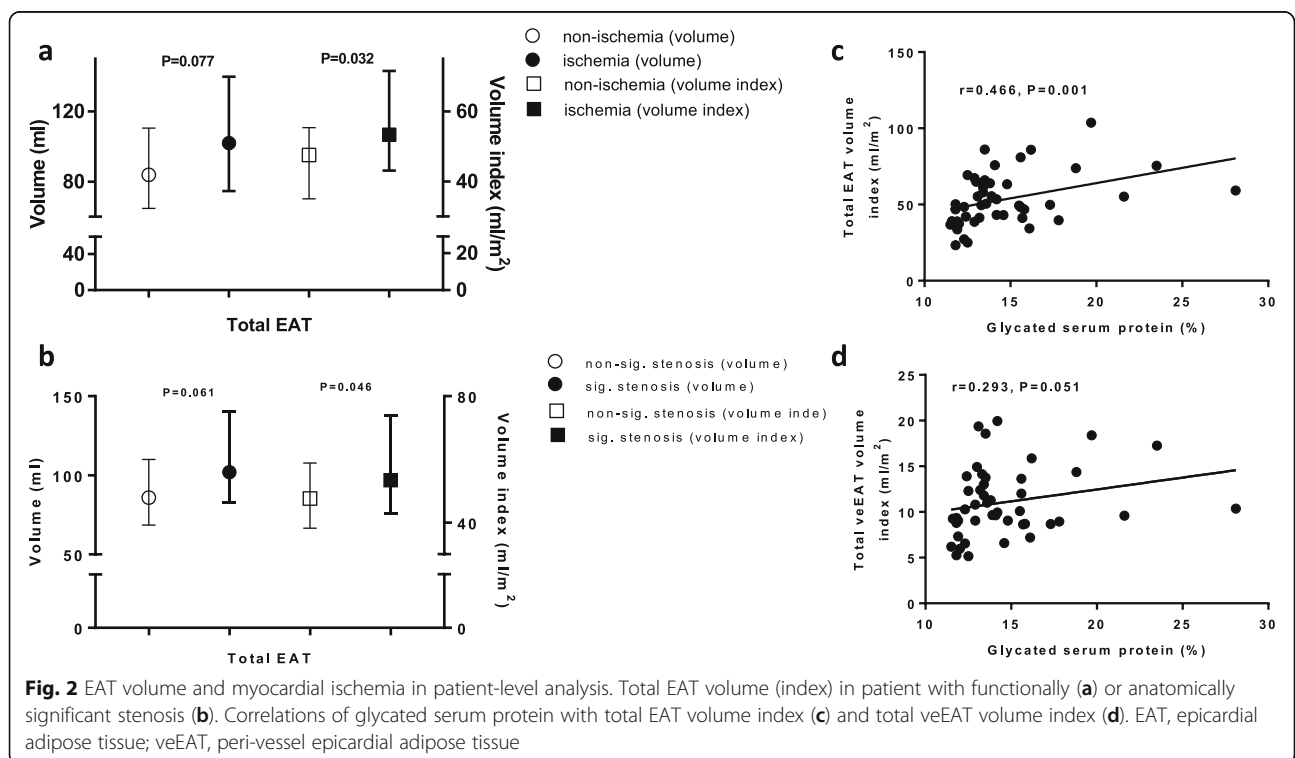
respectively). The ischemic patients were slightly older than the non-ischemic patients, had more extensive and severe CAD, and half underwent PCI (Table 1). As shown in Fig. 2a, the total EAT volume was non-significantly greater in ischemic patients than non-ischemic patients (102.0 vs 84.0 ml, $P = 0.077$), whereas this pattern became statistically significant regarding the indexed total EAT volume (53.4 vs 47.6 ml/m², $P = 0.032$). Patients were also divided into non-significant and significant stenosis groups according to the presence of at least one significantly stenotic lesion (58 and 42%, respectively). Similarly, as shown in Fig. 2b, compared with non-significant stenosis patients, significant stenosis patients had a slightly higher total EAT volume (102.0 vs 85.9 ml, $P = 0.061$) and a markedly higher indexed total EAT volume (53.4 vs 47.6 ml/m², $P = 0.046$). The relation of EAT volume and myocardial ischemia in a dose-dependent manner was not further investigated because most of the patients had at least one ischemic or significant stenosis (91 and 95%, respectively).

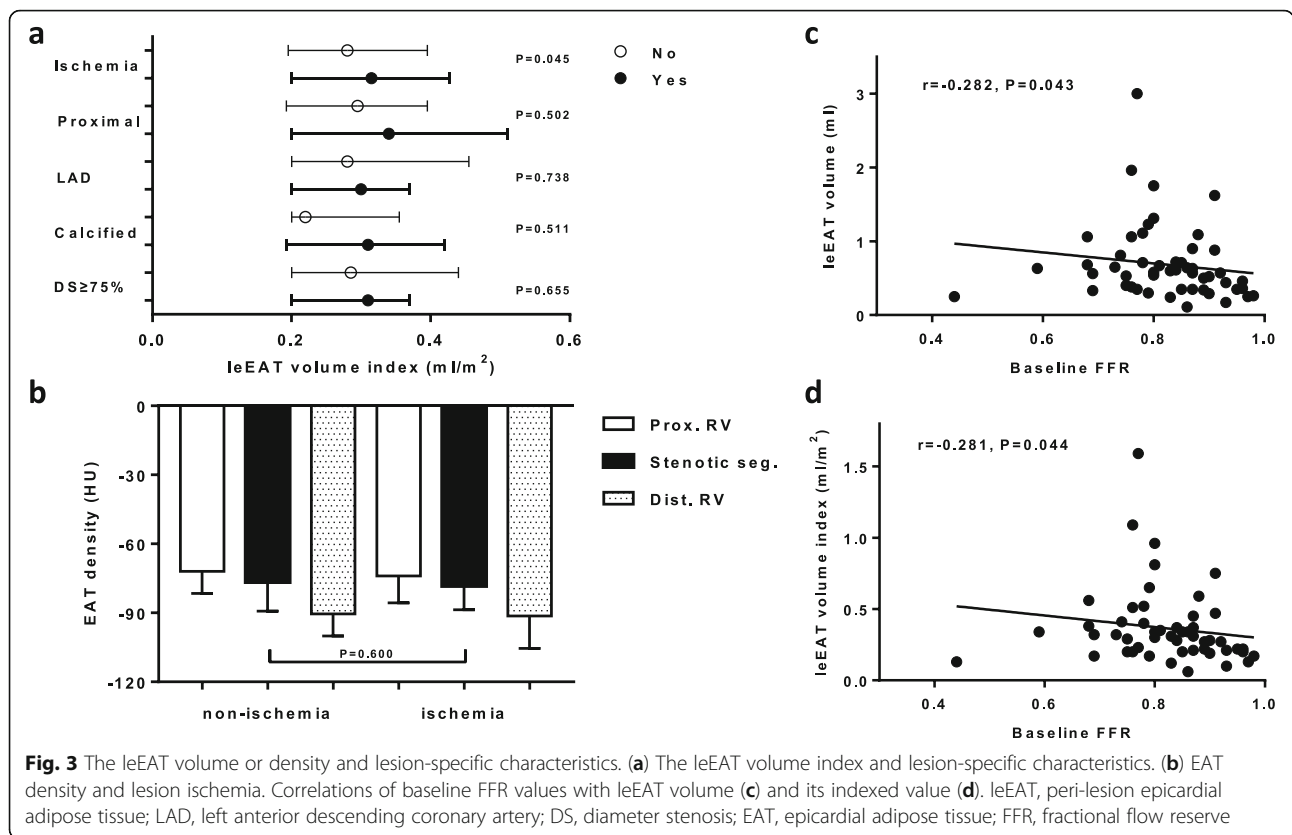
In addition, we found that the total EAT volume was positively correlated with the body mass index ($r = 0.381$, $P = 0.010$), fasting blood glucose level ($r = 0.341$, $P = 0.022$), and glycated serum protein level ($r = 0.434$, $P = 0.003$). Moreover, the indexed total EAT volume was still positively correlated with the fasting blood glucose ($r = 0.330$, $P = 0.027$) and glycated serum protein ($r = 0.466$, $P = 0.001$) (Fig. 2c). Glycated serum protein was

also positively correlated with the total veEAT volume ($r = 0.308$, $P = 0.040$) and its index value ($r = 0.293$, $P = 0.051$) (Fig. 2d).

EAT volume or density and myocardial ischemia in lesion-level analysis

All study lesions were divided into non-ischemic and ischemic lesions, the baseline characteristics of which are shown in Table 2. Compared with non-ischemia lesions, ischemic lesions had more severe diameter stenosis and greater plaque length. Pre-procedural FFR values for ischemic lesions were significantly lower than those of the non-ischemic lesions (0.74 ± 0.08 vs 0.89 ± 0.05 , $P < 0.001$). Ischemic lesions accounted for 46% of all lesions that underwent PCI. None of the non-ischemic lesions were treated. As shown in Table 2, compared with non-ischemic lesions, ischemic lesions had higher leEAT volumes (0.64 vs 0.50 ml, $P = 0.051$) and a significantly higher leEAT volume index (0.34 vs 0.27 ml/m², $P = 0.045$). This pattern, however, was not apparent for the veEAT volume (6.89 vs 7.20 ml, $P = 0.607$) or veEAT volume index (3.83 vs 3.80 ml/m², $P = 0.508$). Subgroup analysis showed that, except for the ischemic lesions ($P = 0.045$), the leEAT volume index was not significantly different with respect to proximal lesions, LAD, calcified plaque, or diameter stenosed $\geq 75\%$ (all $P > 0.05$) (Fig. 3a). Furthermore, as shown in Supplementary Table S1, the independent lesion-level predictors for ischemia were diameter stenosis of $\geq 75\%$ [hazard ratio (HR)





14.56, 95% CI 2.93–72.24, $P = 0.001$] and the leEAT volume index (per 0.1 ml/m² increase) (HR 1.56, 95% CI 1.04–2.33, $P = 0.032$), after adjusting for LAD, proximal segment, plaque length, plaque calcification, and reference vessel diameter.

We also evaluated EAT density between non-ischemic and ischemic lesions, which showed no significant differences with regard to leEAT density (-76.54 ± 12.71 vs -78.23 ± 10.44 HU, $P = 0.600$), veEAT density of the proximal reference vessel (-71.94 ± 9.60 vs -74.00 ± 11.63 HU, $P = 0.475$), or the distal reference vessel (-90.40 ± 9.65 vs -91.38 ± 14.04 HU, $P = 0.763$) (Fig. 3b). Additionally, we found that baseline FFR values negatively correlated with the leEAT volume ($r = -0.282$, $P = 0.043$) (Fig. 3c) or the leEAT volume index ($r = -0.281$, $P = 0.044$) (Fig. 3d).

Discussion

We performed a proof-of-concept study to evaluate the associations of EAT volume and density with myocardial ischemia in patient-, vessel-, and lesion-level analyses, in a high-risk Chinese population. First, we found that the total EAT volume index was markedly increased in patients with functionally or anatomically significant stenosis. Second, leEAT volume index was markedly higher for ischemic lesions, furthermore, this index was a

lesion-specific predictor of hemodynamic relevance, independent of a variety of lesion-level parameters. Third, the total EAT volume was positively correlated with fat accumulation and glucose metabolism, whereas the leEAT volume was negatively correlated with lesion FFR values. Fourth, we did not observe any significant differences in CT attenuation between non-ischemic and ischemic lesions in both lesion- or vessel-level analyses.

The significant correlations of the total EAT volume with functionally or anatomically significant CAD have been widely observed [2, 3], although not reported in a recent study by Muthalaly et al. with moderately severe CAD patients [18] or even in the prospective, large-scale CORE320 multicenter study [19]. Likewise, Romijn et al. found an independent relation between EAT volume and myocardial ischemia, but the diagnostic performance for identifying hemodynamically significant CAD was not improved when considering coronary artery calcification [20]. A recent meta-analysis that included more than 40,000 subjects at low to intermediate risk of cardiovascular disorders showed that EAT volume was an independent predictor of obstructive stenosis, significant stenosis, myocardial ischemia, and MACE, irrespective of traditional cardiovascular risk factors [21]. In line with this meta-analysis, we found that indexed total EAT volume was significantly increased in patients with

functionally or anatomically significant stenosis. The above conflicting results might be attributed, at least in part, to a diversity of populations [21], more importantly illustrate a complex relation between EAT and the pathogenesis of CAD, which is hardly explain by the overall EAT volume alone.

Recent evidence suggests a potentially active role of peri-coronary EAT in the pathogenesis of coronary atherosclerosis [22]. It was reported that peri-coronary segment EAT quantity was related to plaque size and composition, independent of cardiovascular risk factors and overall EAT volume [16, 23]. Also, this coronary segment-specific EAT volume was associated with luminal stenosis severity, the presence of reversible perfusion defects, and the culprit lesion [15, 24, 25]. Unlike the above studies, we performed a lesion-specific analysis and found a close relation between indexed leEAT volume and the presence of lesion ischemia. Furthermore, every 0.1 ml/m² increase in the leEAT volume index was independently associated with a 1.6-fold increased risk of lesion ischemia, irrespective of lesion stenosis or plaque features. Although the predicting value was relatively small, our results showed the feasibility to predict lesion-specific ischemia using leEAT volume index, which appeared to have a promising prospective considering a large and increasing number of patients referred to undergo coronary CTA examination for suspected CAD. We did not, however, observe a markedly increased leEAT volume index in significantly luminal stenosis or non-calcified plaque, which has been reported elsewhere [24]. Mahabadi et al., however, also found no difference between non-calcified and calcified plaque in terms of leEAT volume [16].

Additionally, a vessel-level analysis showed no associations of veEAT volume and ischemia, which might support the hypothesis that the function of EAT varies depending on its particular depot. In line with this notion, we found the total EAT volume in patient- or vessel-level was significantly associated with fat accumulation and glucose metabolism, while the leEAT volume was associated with FFR values. More specifically, a dysfunctional secretion profile and M2 macrophage accumulation in lesion-level analysis were reported to be higher for peri-coronary EAT near stenotic coronary segments than for those near non-stenotic segments [26, 27]. Another possible explanation is that the metabolic activities of veEAT and leEAT, shown as EAT CT attenuation, were not consistent or remained unchanged. Markedly increased peri-coronary EAT CT attenuation was observed in stenotic segments, lesions with ¹⁸F-sodium fluoride uptake on positron emission tomography and culprit lesions [28–30]. In this study, however, there were no significant differences between ischemic and non-ischemic lesions in terms of peri-coronary EAT and

peri-vessel EAT attenuation. In line with our findings, Hell et al. found that EAT volume, but not density, was associated with myocardial ischemia in patients suspected of having CAD [31]. Also, Balcer et al. reported that the peri-coronary EAT volume, but not attenuation, was independently correlated with culprit lesions [25].

This study had some limitations. First, the study's sample size was relatively small, which impeded the performance of more subgroup or exploratory analyses. Second, because of the relatively strict inclusion and exclusion criteria, extrapolating our conclusions to other populations should be cautious. Third, based on the cross-sectional design, no causal relation could be confirmed, although multivariate regression analysis was performed. Fourth, methods for measuring the peri-coronary fat quality varies among studies, which might lead to non-comparable results among them. In addition, ROIs of veEAT and leEAT were manually, not automatically, delineated due to software limitations.

Conclusion

We found that the indexed lesion-specific EAT volume appeared to be positively associated with lesion ischemia, independent of luminal stenosis and plaque characteristics. Hence, the peri-coronary lesion EAT volume index might be a promising marker for identifying lesion-specific ischemia, although its incremental diagnostic value when considering other risk factors should be further investigated.

Supplementary information

Supplementary information accompanies this paper at <https://doi.org/10.1186/s12872-020-01499-w>.

Additional file 1: Figure S1. Study flow-chart. **Table S1.** Lesion-level predictors for myocardial ischemia in univariate and multivariate analyses.

Abbreviations

EAT: Epicardial adipose tissue; CAD: Coronary artery disease; MACE: Major adverse cardiovascular events; CT: Computed tomography; CTA: Computed tomography angiography; FFR: Fractional flow reserve; ACS: Acute coronary syndrome; ROI: Regions of interest; HU: Hounsfield unit; veEAT: Peri-vessel EAT; leEAT: Peri-lesion EAT; BSA: Body surface area; CI: Confidence interval; LAD: Left anterior descending; PCI: Percutaneous coronary intervention; HR: Hazard ratio

Acknowledgements

Not applicable.

Authors' contributions

Y.J.Z., L.X. and Y.X.Z. designed the study, Y.D. and Y.L. wrote the manuscript, L.Y. did imaging analysis, B.G.Y., S.L., C.P.H., Y.Z. and H.K.Z. collected clinical, procedural and imaging data, Q.M. and Z.J.W. performed statistically analysis, D.M.S. and Y.Y.L. revised manuscript. All authors have read and approved the manuscript.

Funding

This work were supported by the grant from National Key Research and Development Program of China (2017YFC0908800) (for Principal Investigator: Yujie Zhou), Beijing Municipal Administration of Hospitals' Ascent Plan

(DFL20150601) (for Principal Investigator: Yujie Zhou) and Mission plan (SML20180601) (for Principal Investigator: Yujie Zhou), Beijing Municipal Health Commission "Project of Science and Technology Innovation Center" (PXM2019_026272_000006) (PXM2019_026272_000005) (for Principal Investigator: Yujie Zhou). The funding bodies had no role in the design of the study and collection, analysis, and interpretation of data and in writing the manuscript.

Availability of data and materials

The data that support the findings of this study are available on request from the corresponding author.

Ethics approval and consent to participate

The study protocol conformed to the Declaration of Helsinki and was approved by the ethics committee of Beijing Anzhen Hospital of Capital Medical University. Written informed consent was obtained from each patient. The data that support the findings of this study are available on request from the corresponding author.

Consent for publication

Not applicable.

Competing interests

All authors have no potential conflict of interest to disclose.

Author details

¹Department of Cardiology, Beijing Anzhen Hospital, Capital Medical University, Beijing Institute of Heart Lung and Blood Vessel Disease, Beijing Key Laboratory of Precision Medicine of Coronary Atherosclerotic Disease, Clinical center for coronary heart disease, Capital Medical University, Beijing 100029, China. ²Department of Radiology, Beijing Anzhen Hospital, Capital Medical University, Beijing Institute of Heart Lung and Blood Vessel Disease, Beijing 100029, China. ³Department of Cardiology, Fuwai Yunnan Cardiovascular Hospital, Yunnan 650000, China.

Received: 27 September 2019 Accepted: 29 April 2020

Published online: 15 May 2020

References

- Iacobellis G, Corradi D, Sharma AM. Epicardial adipose tissue: anatomic, biomolecular and clinical relationships with the heart. *Nat Clin Pract Cardiovasc Med*. 2005;2(10):536–43.
- Sinha SK, Thakur R, Jha MJ, Goel A, Kumar V, Kumar A, Mishra V, Varma CM, Krishna V, Singh AK, et al. Epicardial adipose tissue thickness and its association with the presence and severity of coronary artery disease in clinical setting: a cross-sectional observational study. *J Clin Med Res*. 2016; 8(5):410–9.
- Nakazato R, Dey D, Cheng VY, Gransar H, Slomka PJ, Hayes SW, Thomson LE, Friedman JD, Min JK, Berman DS. Epicardial fat volume and concurrent presence of both myocardial ischemia and obstructive coronary artery disease. *Atherosclerosis*. 2012;221(2):422–6.
- Nerlekar N, Brown AJ, Muthalaly RG, Talman A, Hettige T, Cameron JD, DTL W. Association of Epicardial Adipose Tissue and High-Risk Plaque Characteristics: A Systematic Review and Meta-Analysis. *J Am Heart Assoc*. 2017;6(8).
- Mahabadi AA, Berg MH, Lehmann N, Kalsch H, Bauer M, Kara K, Dragano N, Moebus S, Jockel KH, Erbel R, et al. Association of epicardial fat with cardiovascular risk factors and incident myocardial infarction in the general population: the Heinz Nixdorf recall study. *J Am Coll Cardiol*. 2013;61(13): 1388–95.
- Akoumianakis I, Antoniadou C. The interplay between adipose tissue and the cardiovascular system: is fat always bad? *Cardiovasc Res*. 2017;113(9): 999–1008.
- Shimokawa H, Ito A, Fukumoto Y, Kadokami T, Nakaike R, Sakata M, Takayanagi T, Egashira K, Takeshita A. Chronic treatment with interleukin-1 beta induces coronary intimal lesions and vasospastic responses in pigs in vivo. The role of platelet-derived growth factor. *J Clin Invest*. 1996;97(3): 769–76.
- Miyata K, Shimokawa H, Kandabashi T, Higo T, Morishige K, Eto Y, Egashira K, Kaibuchi K, Takeshita A. Rho-kinase is involved in macrophage-mediated formation of coronary vascular lesions in pigs in vivo. *Arterioscler Thromb Vasc Biol*. 2000;20(11):2351–8.
- McKenney ML, Schultz KA, Boyd JH, Byrd JP, Alloosh M, Teague SD, Arce-Esquivel AA, Fain JN, Laughlin MH, Sacks HS, et al. Epicardial adipose excision slows the progression of porcine coronary atherosclerosis. *J Cardiothorac Surg*. 2014;9:2.
- Franssens BT, Nathoe HM, Leiner T, van der Graaf Y, Visseren FL. Relation between cardiovascular disease risk factors and epicardial adipose tissue density on cardiac computed tomography in patients at high risk of cardiovascular events. *Eur J Prev Cardiol*. 2017;24(6):660–70.
- Antonopoulos AS, Sanna F, Sabharwal N, Thomas S, Oikonomou EK, Herdman L, Margaritis M, Shirodaria C, Kampoli AM, Akoumianakis I, et al. Detecting human coronary inflammation by imaging perivascular fat. *Sci Transl Med*. 2017;9(398).
- Oikonomou EK, Marwan M, Desai MY, Mancio J, Alashi A, Hutt Centeno E, Thomas S, Herdman L, Kotanidis CP, Thomas KE, et al. Non-invasive detection of coronary inflammation using computed tomography and prediction of residual cardiovascular risk (the CRISP CT study): a post-hoc analysis of prospective outcome data. *Lancet (London)*. 2018;392(10151): 929–39.
- Halliburton SS, Abbara S, Chen MY, Gentry R, Mahesh M, Raff GL, Shaw LJ, Hausleiter J. SCCT guidelines on radiation dose and dose-optimization strategies in cardiovascular CT. *J Cardiovasc Comput Tomogr*. 2011;5(4):198–224.
- Xu L, Xu Y, Coulden R, Sonnex E, Hrybouski S, Paterson I, Butler C. Comparison of epicardial adipose tissue radiodensity threshold between contrast and non-contrast enhanced computed tomography scans: a cohort study of derivation and validation. *Atherosclerosis*. 2018;275:74–9.
- Khawaja T, Greer C, Thadani SR, Kato TS, Bhatia K, Shimbo D, Kontak A, Bokhari S, Einstein AJ, Schulze PC. Increased regional epicardial fat volume associated with reversible myocardial ischemia in patients with suspected coronary artery disease. *J Nucl Cardiol*. 2015;22(2):325–33.
- Mahabadi AA, Reinsch N, Lehmann N, Altenbernd J, Kalsch H, Seibel RM, Erbel R, Mohlenkamp S. Association of pericoronary fat volume with atherosclerotic plaque burden in the underlying coronary artery: a segment analysis. *Atherosclerosis*. 2010;211(1):195–9.
- Pijls NH, De Bruyne B, Peels K, Van Der Voort PH, Bonnier HJ, Bartunek J, Koolen JJ. Measurement of fractional flow reserve to assess the functional severity of coronary-artery stenoses. *N Engl J Med*. 1996; 334(26):1703–8.
- Muthalaly RG, Nerlekar N, Wong DT, Cameron JD, Seneviratne SK, Ko BS. Epicardial adipose tissue and myocardial ischemia assessed by computed tomography perfusion imaging and invasive fractional flow reserve. *J Cardiovasc Comput Tomogr*. 2017;11(1):46–53.
- Tanami Y, Jinzaki M, Kishi S, Matheson M, Vavere AL, Rochitte CE, Dewey M, Chen MY, Clouse ME, Cox C, et al. Lack of association between epicardial fat volume and extent of coronary artery calcification, severity of coronary artery disease, or presence of myocardial perfusion abnormalities in a diverse, symptomatic patient population: results from the CORE320 multicenter study. *Circ Cardiovasc Imaging*. 2015;8(3):e002676.
- Romijn MA, Danad I, Bakkum MJ, Stuijzand WJ, Tulevski II, Somsen GA, Lammertsma AA, van Kuijk C, van de Ven PM, Min JK, et al. Incremental diagnostic value of epicardial adipose tissue for the detection of functionally relevant coronary artery disease. *Atherosclerosis*. 2015;242(1): 161–6.
- Mancio J, Azevedo D, Saraiva F, Azevedo AI, Pires-Morais G, Leite-Moreira A, Falcao-Pires I, Lunet N, Bettencourt N. Epicardial adipose tissue volume assessed by computed tomography and coronary artery disease: a systematic review and meta-analysis. *Eur Heart J Cardiovasc Imaging*. 2018; 19(5):490–7.
- Verhagen SN, Visseren FL. Perivascular adipose tissue as a cause of atherosclerosis. *Atherosclerosis*. 2011;214(1):3–10.
- Verhagen SN, Vink A, van der Graaf Y, Visseren FL. Coronary perivascular adipose tissue characteristics are related to atherosclerotic plaque size and composition. A post-mortem study. *Atherosclerosis*. 2012;225(1):99–104.
- Hassan M, Said K, Rizk H, Elmoghy F, Donya M, Houseni M, Yacoub M. Segmental peri-coronary epicardial adipose tissue volume and coronary plaque characteristics. *Eur Heart J Cardiovasc Imaging*. 2016;17(10):1169–77.
- Balcer B, Dykun I, Schlosser T, Forsting M, Rassaf T, Mahabadi AA. Pericoronary fat volume but not attenuation differentiates culprit lesions in patients with myocardial infarction. *Atherosclerosis*. 2018;276:182–8.

26. Verhagen SN, Buijsrogge MP, Vink A, van Herwerden LA, van der Graaf Y, Visseren FL. Secretion of adipocytokines by perivascular adipose tissue near stenotic and non-stenotic coronary artery segments in patients undergoing CABG. *Atherosclerosis*. 2014;233(1):242–7.
27. Du Y, Ji Q, Cai L, Huang F, Lai Y, Liu Y, Yu J, Han B, Zhu E, Zhang J, et al. Association between omentin-1 expression in human epicardial adipose tissue and coronary atherosclerosis. *Cardiovasc Diabetol*. 2016;15:90.
28. Marwan M, Hell M, Schuhback A, Gauss S, Bittner D, Pflederer T, Achenbach S. CT attenuation of Pericoronary adipose tissue in Normal versus atherosclerotic coronary segments as defined by intravascular ultrasound. *J Comput Assist Tomogr*. 2017;41(5):762–7.
29. Konishi M, Sugiyama S, Sato Y, Oshima S, Sugamura K, Nozaki T, Ohba K, Matsubara J, Sumida H, Nagayoshi Y, et al. Pericardial fat inflammation correlates with coronary artery disease. *Atherosclerosis*. 2010;213(2):649–55.
30. Kwiecinski J, Dey D, Cadet S, Lee SE, Otaki Y, Huynh PT, Doris MK, Eisenberg E, Yun M, Jansen MA, et al. Peri-coronary adipose tissue density is associated with (18) F-sodium fluoride coronary uptake in stable patients with high-risk plaques. *J Am Coll Cardiol Img*. 2019;12(10):2000–10.
31. Hell MM, Ding X, Rubeaux M, Slomka P, Gransar H, Terzopoulos D, Hayes S, Marwan M, Achenbach S, Berman DS, et al. Epicardial adipose tissue volume but not density is an independent predictor for myocardial ischemia. *J Cardiovasc Comput Tomogr*. 2016;10(2):141–9.

Publisher's Note

Springer Nature remains neutral with regard to jurisdictional claims in published maps and institutional affiliations.

Ready to submit your research? Choose BMC and benefit from:

- fast, convenient online submission
- thorough peer review by experienced researchers in your field
- rapid publication on acceptance
- support for research data, including large and complex data types
- gold Open Access which fosters wider collaboration and increased citations
- maximum visibility for your research: over 100M website views per year

At BMC, research is always in progress.

Learn more biomedcentral.com/submissions

