



Published in final edited form as:

*Curr Biol.* 2020 April 06; 30(7): 1352–1355. doi:10.1016/j.cub.2020.03.034.

## Dopamine Signaling in the Suprachiasmatic Nucleus Enables Weight Gain Associated with Hedonic Feeding

Ryan M. Grippo<sup>1</sup>, Qijun Tang<sup>1</sup>, Qi Zhang<sup>1</sup>, Sean R. Chadwick<sup>1</sup>, Yingnan Gao<sup>1</sup>, Everett B. Altherr<sup>1</sup>, Laura Sipe<sup>2</sup>, Aarti M. Purohit<sup>3</sup>, Nidhi M. Purohit<sup>1</sup>, Meghana D. Sunkara<sup>1</sup>, Krystyna J. Cios<sup>1</sup>, Michael Sidikpramana<sup>4</sup>, Anthony J. Spano<sup>1</sup>, John N. Campbell<sup>1</sup>, Andrew D. Steele<sup>4</sup>, Jay Hirsh<sup>1</sup>, Christopher D. Deppmann<sup>5</sup>, Martin Wu<sup>1</sup>, Michael M. Scott<sup>6</sup>, Ali D. Güler<sup>7,\*</sup>

<sup>1</sup> Department of Biology, University of Virginia, Charlottesville, VA 22904, USA.

<sup>2</sup> Department of Biology, University of Virginia, Charlottesville, VA 22904, USA; The University of Tennessee Health Science Center, Memphis, TN 38163, USA.

<sup>3</sup>Department of Biology, University of Virginia, Charlottesville, VA 22904, USA; Department of Medicine, Johns Hopkins University School of Medicine, Baltimore, MD 21205, USA.

<sup>4</sup>Department of Biological Sciences, California State Polytechnic University Pomona, Pomona, CA 91768, USA.

<sup>5</sup>Department of Biology, University of Virginia, Charlottesville, VA 22904, USA; Department of Neuroscience, School of Medicine, University of Virginia, Charlottesville, VA 22908, USA.

<sup>6</sup>Department of Pharmacology, University of Virginia, Charlottesville, VA 22908, USA.

<sup>7</sup>Department of Biology, University of Virginia, Charlottesville, VA 22904, USA; Department of Neuroscience, School of Medicine, University of Virginia, Charlottesville, VA 22908, USA.

---

After the publication of the original version of the article, several errors that were made during the production of the main figures were identified in Figures 1C (KO-SCD image duplication as KO-HFD), 2B (inclusion of an extra data marker in KO-SCD night group), 2G (KO-HFD dataset duplication as KO-SCD), and 4I (NAc-C versus NAc-R mislabeling). We also identified typographical errors in the Figure 2 legend: in 2G,  $F_{\text{diet}}(1,19) = 22.3$  should have been  $F_{\text{diet}}(1,19) = 20.3$ ; in 2L,  $F_{\text{diet}}(1,36) = 14.8$  should have been  $F_{\text{diet}}(1,36) = 18.4$ . In the main text, the mean values for 2G were presented with standard deviation (mean  $\pm$  SD) (WT-SCD: 12.5%  $\pm$  5.1%; KO-SCD: 10.8%  $\pm$  1.5%; WT-HFD: 27.7%  $\pm$  6.1%; KO-HFD: 11.4%  $\pm$  1.5%) instead of standard error of the mean (mean  $\pm$  SEM) (WT-SCD: 12.5%  $\pm$  1.9%; KO-SCD: 10.8%  $\pm$  0.6%; WT-HFD: 27.7%  $\pm$  2.7%; KO-HFD: 11.4%  $\pm$  0.7%). Since these errors occurred after data analysis, they did not affect any of the statistical comparisons or conclusions. In the Supplemental Information, mistakes were identified in Figure S2N (use of KO-HFD group as WT-SCD), the Figure S4C legend (typographical error, indicating use of one-way instead of two-way ANOVA test), and tables (typographical errors made during their population). These errors did not alter any of the conclusions made

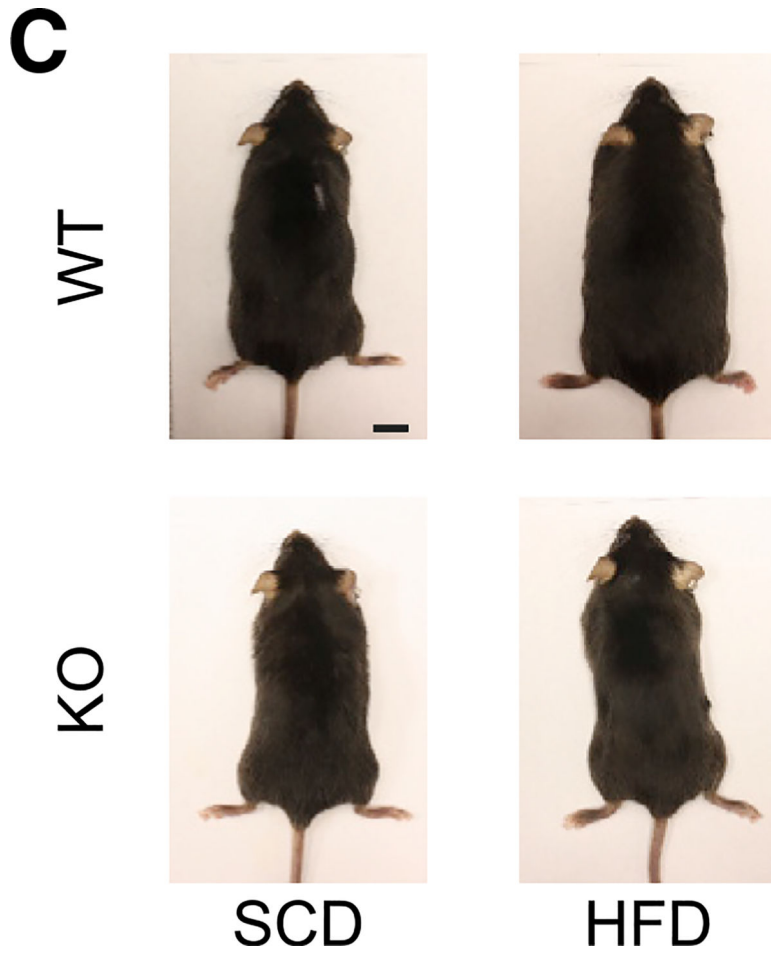
---

\*Correspondence: aguler@virginia.edu.

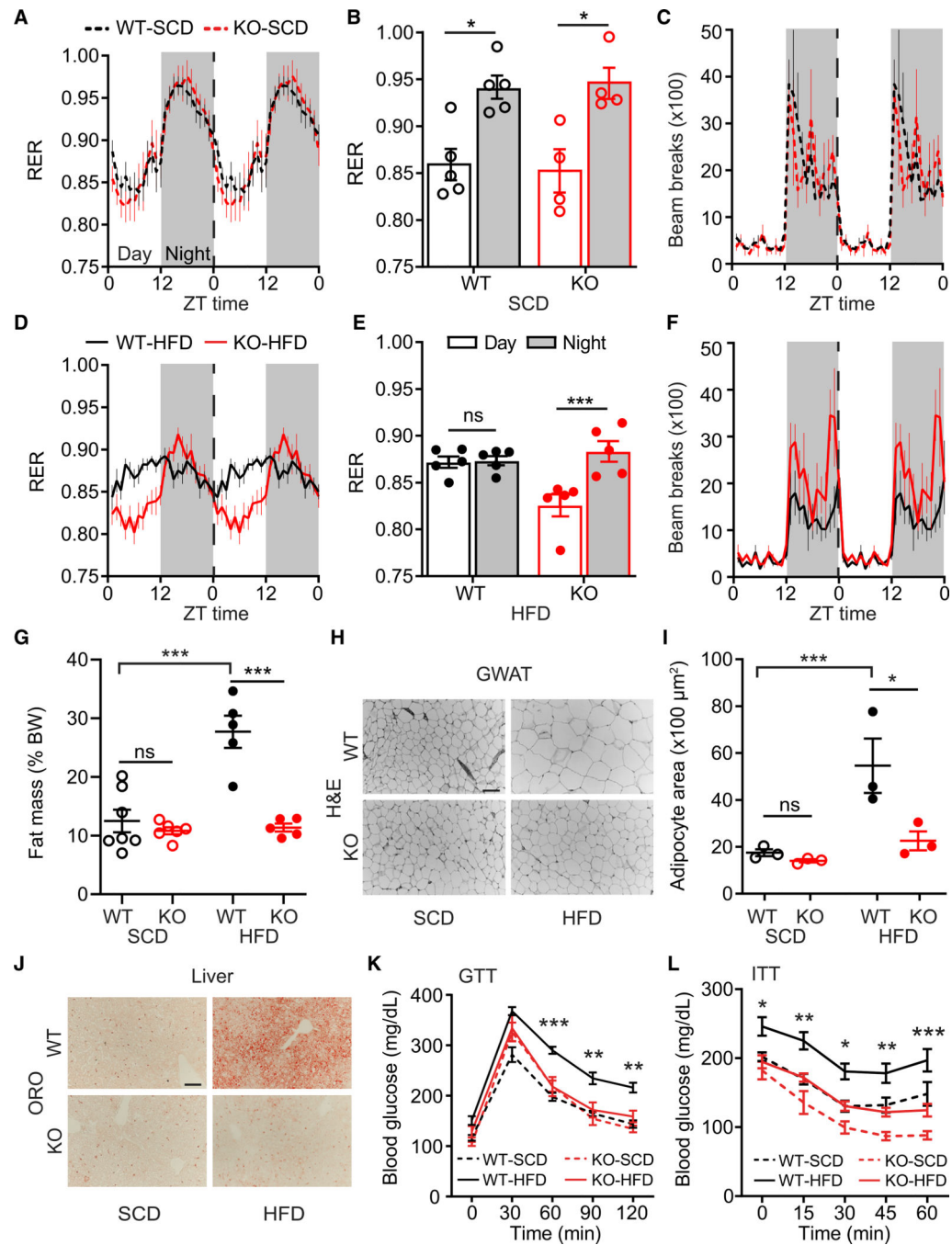
in our manuscript. New, accurate graphs, statistical comparisons, and tables have now been incorporated into the online version of the paper. The authors thank the reader who alerted us to some of these errors and apologize for any confusion that they may have caused.

## Supplementary Material

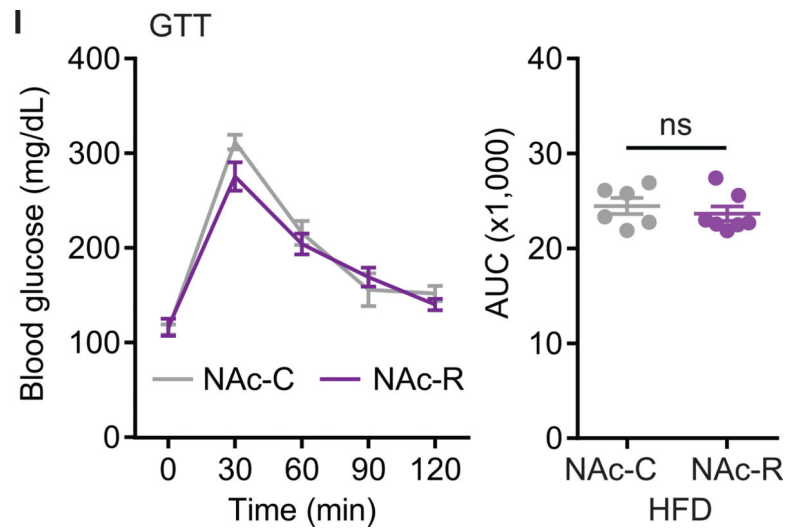
Refer to Web version on PubMed Central for supplementary material.



**Figure 1C.**  
Drd1-KO Mice Are Protected from HFD-Induced Obesity



**Figure 2.**  
Drd1-KO Mice Are Resistant to HFD-Induced Metabolic Disease



**Figure 4I.**  
Selective Re-expression of Drd1 within the NAc of Drd1-KO Mice Partially Rescues HFD-Induced Phenotypes, Excluding Obesity