

Impact of postoperative complications on survival after oesophagectomy for oesophageal cancer

J. R. Bundred¹ , A. C. Hollis¹, R. Evans², J. Hodson³, J. L. Whiting² and E. A. Griffiths^{2,4}

¹College of Medical and Dental Sciences and ²Institute of Cancer and Genomic Sciences, College of Medical and Dental Sciences, University of Birmingham, and ³Department of Upper Gastrointestinal Surgery and ⁴Institute of Translational Medicine, University Hospitals Birmingham NHS Foundation Trust, Birmingham, UK

Correspondence to: Mr E. A. Griffiths, Department of Upper Gastrointestinal Surgery, Area 6, 7th Floor, Queen Elizabeth Hospital Birmingham, Mindelsohn Way, Edgbaston, Birmingham B15 2WB, UK (e-mail: ewen.griffiths@uhb.nhs.uk)

Background: Recent evidence suggests that complications after oesophagectomy may decrease short- and long-term survival of patients with oesophageal cancer. This study aimed to analyse the impact of complications on survival in a Western cohort.

Methods: Complications after oesophagectomy were recorded for all patients operated on between January 2006 and February 2017, with severity defined using the Clavien–Dindo classification. Associations between complications and overall and recurrence-free survival were assessed using univariable and multivariable Cox regression models.

Results: Of 430 patients, 292 (67.9 per cent) developed postoperative complications, with 128 (39.8 per cent) classified as Clavien–Dindo grade III or IV. No significant associations were detected between Clavien–Dindo grade and either tumour (T) ($P = 0.071$) or nodal (N) status ($P = 0.882$). There was a significant correlation between Clavien–Dindo grade and ASA fitness grade ($P = 0.032$). In multivariable analysis, overall survival in patients with Clavien–Dindo grade I complications was similar to that in patients with no complications (hazard ratio (HR) 0.97, $P = 0.915$). However, patients with grade II and IV complications had significantly shorter overall survival than those with no complications: HR 1.64 ($P = 0.007$) and 1.74 ($P = 0.013$) respectively.

Conclusion: Increasing severity of complications after oesophagectomy was associated with decreased overall survival. Prevention of complications should improve survival.

Funding information

Queen Elizabeth Hospital Birmingham Charity (Upper Gastrointestinal Fund)
Upper G.I. Blues

Paper accepted 13 January 2020

Published online 17 February 2020 in Wiley Online Library (www.bjsopen.com). DOI: 10.1002/bjs.5.50264

Introduction

Despite advances in treatment, oesophageal cancer remains the sixth most common cause of cancer-related mortality worldwide, with an increasing incidence in the West^{1,2}. The mainstay of curative therapy for locoregional oesophageal cancer is oesophagectomy, although this procedure is possible only in selected patients. Even in this subset, resection is associated with significant morbidity and mortality^{3,4}. Recent series^{5–10} have reported complications in 30–70 per cent of patients. Serious complications, including anastomotic leak, conduit necrosis and pulmonary complications, lead to an increased length

of hospital stay and return to theatre, and decreased overall survival^{11,12}.

Recent evidence^{3,6,13–16} also suggests that complications after oesophagectomy may decrease overall and disease-specific survival in patients with complications that resolve initially. A recent systematic review³ found that postoperative complications decreased survival following oesophagectomy. However, before publication of the consensus reporting guidelines on oesophageal complications¹¹, a lack of standardization of complication reporting made understanding the relationship between complications and long-term survival difficult.

Table 1 Associations between complication grade and patient demographics and co-morbidity

	Total <i>n</i> †	Overall	Highest Clavien–Dindo grade			<i>P</i> ‡
			None	I–II	III–V	
Age at operation (years)*	430	64.9(9.4)	63.7(10.3)	65.6(8.5)	65.3(9.2)	0.162§
Male sex	430	342 (79.5)	109 of 138 (79.0)	120 of 144 (83.3)	113 of 148 (76.4)	0.566
BMI (kg/m²)*	409	26.4(4.9)	27.1(5.4)	26.2(4.9)	25.9(4.4)	0.139§
ASA grade	390		<i>n</i> = 117	<i>n</i> = 138	<i>n</i> = 135	0.032
1		79 (20.3)	25 (21.4)	31 (22.5)	23 (17.0)	
2		207 (53.1)	67 (57.3)	75 (54.3)	65 (48.1)	
3		96 (24.6)	22 (18.8)	31 (22.5)	43 (31.9)	
4		8 (2.1)	3 (2.6)	1 (0.7)	4 (3.0)	
ECOG performance score	303		<i>n</i> = 93	<i>n</i> = 110	<i>n</i> = 100	0.041
0		134 (44.2)	48 (52)	51 (46.4)	35 (35.0)	
1		136 (44.9)	33 (35)	52 (47.3)	51 (51.0)	
2		33 (10.9)	12 (13)	7 (6.4)	14 (14.0)	
Co-morbidity			<i>n</i> = 125	<i>n</i> = 138	<i>n</i> = 140	
Ischaemic heart disease	403	53 (13.2)	13 (10.4)	18 (13.0)	22 (15.7)	0.198
Renal impairment	403	4 (1.0)	2 (1.6)	1 (0.7)	1 (0.7)	0.512
Diabetic	403	48 (11.9)	10 (8.0)	18 (13.0)	20 (14.3)	0.109
COPD	403	31 (7.7)	7 (5.6)	10 (7.2)	14 (10.0)	0.178
Previous cancer	403	19 (4.7)	5 (4.0)	4 (2.9)	10 (7.1)	0.242
Significant smoking history	403	60 (14.9)	14 (11.2)	25 (18.1)	21 (15.0)	0.399
Alcohol misuse/heavy drinker	403	9 (2.2)	1 (0.8)	4 (2.9)	4 (2.9)	0.226

Values in parentheses are percentages unless indicated otherwise; *values are mean(s.d.). †Number of patients with data available for the stated factor. ECOG, Eastern Cooperative Oncology Group; COPD, chronic obstructive pulmonary disease. ‡Kendall's τ , except §Jonckheere–Terpstra test.

This study aimed to identify preoperative and perioperative factors associated with the development of complications, and to examine the effect of complication grade on overall and recurrence-free survival.

Methods

All consecutive patients who had oesophagectomy for oesophageal cancer at a tertiary referral centre (Queen Elizabeth Hospital, Birmingham) between January 2006 and February 2017, identified from a prospectively developed database, were included in the study. Patients were followed up for a minimum of 28 months to June 2019. Patients with inoperable disease undergoing 'open and close' procedures, with no resection, were excluded. The data set included demographic, treatment and pathology details along with complications^{17–21}. The study was approved by the Queen Elizabeth Hospital clinical audit department. Ethics committee approval was waived, given the nature of the study. Patients did not receive neoadjuvant chemotherapy when: they declined the option after discussion with a consultant oncologist; they had co-morbidity for which the risks of chemotherapy were considered to outweigh the advantages (for instance patients with renal impairment or cardiovascular disease); or they had tumour

staged before surgery as T2 disease or lower. All patients undergoing oesophagectomy with non-benign findings on histological examination were included.

Operations

Over the 11-year period, oesophagectomies were performed by ten specialist upper gastrointestinal consultant surgeons, or trainees under supervision, and classified as open, minimally invasive or hybrid. The decision regarding surgical approach was at the discretion of the consultant surgeon. Completely minimally invasive procedures were introduced in 2008. Anastomotic techniques included hand-sewn, circular stapled, OrVil™ (Covidien, Mansfield, MA, USA) and semimechanical anastomoses. Postoperative nutritional support was used routinely via feeding jejunostomy, unless, for technical reasons, nasojejunal feeding or total parenteral nutrition was needed. After surgery, all patients were managed initially in a critical care unit before transfer to standard ward care when considered fit. R1 resections were those in which the tumour was present microscopically within 1 mm of the circumferential, distal or proximal margins, as described by the Royal College of Pathologists²²; R2 resections were those in which tumour could not be removed completely, leaving macroscopic residual tumour.

Table 2 Associations between complication grade and pathology

	Total n [†]	Overall	Highest Clavien–Dindo grade			P [‡]
			None	I–II	III–V	
Type of tumour	430		n = 138	n = 144	n = 148	0.490§
Adenocarcinoma		337 (78.4)	110 (79.7)	119 (82.6)	108 (73.0)	
Squamous		70 (16.3)	21 (15.2)	17 (11.8)	32 (21.6)	
Adenosquamous		8 (1.9)	2 (1.4)	4 (2.8)	2 (1.4)	
Other		15 (3.5)	5 (3.6)	4 (2.8)	6 (4.1)	
Tumour location	392		n = 118	n = 134	n = 140	0.208§
GOJ		236 (60.2)	81 (68.6)	74 (55.2)	81 (57.9)	
Distal		132 (33.7)	30 (25.4)	51 (38.1)	51 (36.4)	
Middle		24 (6.1)	7 (5.9)	9 (6.7)	8 (5.7)	
pT category	427		n = 135	n = 144	n = 148	0.071
pT0		19 (4.4)	5 (3.7)	8 (5.6)	6 (4.1)	
pT1		52 (12.2)	13 (9.6)	18 (12.5)	21 (14.2)	
pT2		54 (12.6)	15 (11.1)	14 (9.7)	25 (16.9)	
pT3		277 (64.9)	93 (68.9)	96 (66.7)	88 (59.5)	
pT4		25 (5.9)	9 (6.7)	8 (5.6)	8 (5.4)	
pN category	429		n = 137	n = 144	n = 148	0.882
pN0		164 (38.2)	57 (41.6)	46 (31.9)	61 (41.2)	
pN1		186 (43.4)	57 (41.6)	65 (45.1)	64 (43.2)	
pN2		46 (10.7)	13 (9.5)	20 (13.9)	13 (8.8)	
pN3		33 (7.7)	10 (7.3)	13 (9.0)	10 (6.8)	
pM1 status	430	9 (2.1)	3 of 138 (2.2)	2 of 144 (1.4)	4 of 148 (2.7)	0.757
Overall stage	425		n = 134	n = 144	n = 147	0.428
0		15 (3.5)	4 (3.0)	5 (3.5)	6 (4.1)	
1		74 (17.4)	18 (13.4)	24 (16.7)	32 (21.8)	
2		95 (22.4)	39 (29.1)	25 (17.4)	31 (21.1)	
3		232 (54.6)	70 (52.2)	88 (61.1)	74 (50.3)	
4		9 (2.1)	3 (2.2)	2 (1.4)	4 (2.7)	
Perineural invasion	331	105 (31.7)	38 of 114 (33.3)	40 of 115 (34.8)	27 of 102 (26.5)	0.291
Tumour dimensions (mm)*						
Length	394	35 (25–45)	35 (25–45)	34 (25–45)	35 (25–48)	0.766¶
Width	382	26 (20–40)	25 (18–40)	25 (20–35)	30 (20–37)	0.774¶
Depth	310	12 (8–15)	12 (8–16)	11 (7–15)	12 (8–16)	0.634¶
Maximum dimension	402	35 (25–50)	36 (25–50)	35 (25–50)	35 (25–50)	0.753¶

Values in parentheses are percentages unless indicated otherwise; *values are median (i.q.r.). †Number of patients with data available for the stated factor. GOJ, gastro-oesophageal junction. ‡Kendall’s τ, except §Kruskal–Wallis test and ¶Jonckheere–Terpstra test.

Complications

All postoperative complications were classified according to the standardized definitions proposed by the Esophageal Complications Consensus Group¹¹. All complications were graded according to both the Comprehensive Complication Index (CCI) and the Clavien–Dindo classification.

In summary, the Clavien–Dindo system classifies complications as follows. Grade I includes any deviation from the normal postoperative course without the need for pharmacological treatment or surgical, endoscopic or radiological interventions. Acceptable therapeutic regimens are antiemetics, antipyretics, analgesics, diuretics, electrolytes and physiotherapy. This grade also includes

wound infections opened at the bedside. Grade II includes any complication requiring pharmacological treatment, not allowed in grade I. Grade III includes any complication requiring surgical, endoscopic or radiological intervention. Grade IV includes single or multiple organ failure, requiring ICU management, and grade V denotes inpatient death.

The CCI produces a score between 1 and 100, allowing for multiple complications, and based on the ranking scale used in the Clavien–Dindo system²³. Anastomotic leak, chyle leak, conduit necrosis and vocal cord palsy were also graded in severity from I to III, based on the grading proposed by the Esophageal Complications Consensus Group.

Table 3 Associations between complication grade and intraoperative and postoperative factors

	Total n‡	Highest Clavien–Dindo grade			P#	
		Overall	None	I–II		III–V
Type of operation	430		n = 138	n = 144	n = 148	0.436**
Hybrid		223 (51.9)	71 (51.4)	70 (48.6)	82 (55.4)	
MIO		101 (23.5)	26 (18.8)	43 (29.9)	32 (21.6)	
Open		106 (24.7)	41 (29.7)	31 (21.5)	34 (23.0)	
Total no. of LNs*	429	30.3(11.5)	31.4(11.6)	29.5(11.1)	30.0(11.8)	0.239††
No. of LNs involved†	429	1 (0–4)	1 (0–3)	2 (0–4)	1 (0–4)	0.778††
% of LNs involved†	429	4 (0–13)	4 (0–10)	7 (0–16)	4 (0–13)	0.783††
Margins involved						
Proximal	428	11 (2.6)	5 of 138 (3.6)	4 of 143 (2.8)	2 of 147 (1.4)	0.211
Distal	428	5 (1.2)	0 of 138 (0)	2 of 143 (1.4)	3 of 147 (2.0)	0.089
Circumferential	420	140 (33.3)	40 of 132 (30.3)	54 of 141 (38.3)	46 of 147 (31.3)	0.916
R status	423		n = 133	n = 143	n = 147	0.682
R0		257 (60.8)	82 (61.7)	81 (56.6)	94 (63.9)	
R1		152 (35.9)	48 (36.1)	55 (38.5)	49 (33.3)	
R2		14 (3.3)	3 (2.3)	7 (4.9)	4 (2.7)	
Total intraoperative/postoperative blood loss (units)	430		n = 138	n = 144	n = 148	<0.001
0		332 (77.2)	116 (84.1)	122 (84.7)	94 (63.5)	
1–2		78 (18.1)	19 (13.8)	15 (10.4)	44 (29.7)	
≥3		20 (4.7)	3 (2.2)	7 (4.9)	10 (6.8)	
CRP (mg/l) on day 4* §						
Actual	285	217.3(94.8)	196.5(84.4)	200.5(87.6)	247.1(101.0)	<0.001††
LMCF	419	207.5(93.5)	188.8(81.5)	196.9(87.5)	236.9(103.6)	<0.001††
Albumin (g/l) on day 4* §						
Actual	319	26.6(4.5)	27.7(3.7)	27.6(4.6)	24.6(4.3)	<0.001††
LMCF	423	26.8(4.4)	27.9(3.8)	27.6(4.4)	24.9(4.5)	<0.001††
WCC (× 10⁹/l) on day 4* §						
Actual	351	9.5(3.5)	9.0(3.0)	9.3(2.9)	10.1(4.2)	0.050††
LMCF	424	9.8(3.7)	9.6(3.7)	9.5(3.2)	10.3(4.2)	0.123††
Neoadjuvant chemotherapy	430	342 (79.5)	112 of 138 (81.2)	113 of 144 (78.5)	117 of 148 (79.1)	0.665
Return to theatre	430	90 (20.9)	2 of 138 (1.4)	1 of 144 (0.7)	87 of 148 (58.8)	<0.001
Return to ICU	426	86 (20.2)	0 of 137 (0)	8 of 143 (5.6)	78 of 146 (53.4)	<0.001
Total length of hospital stay (days)†	430	16 (11–25)	12 (9–15)	16 (11–20)	27 (17–43)	<0.001††
Total length of ICU stay (days)†	430	5 (2–10)	3 (2–4)	4 (2–7)	11 (5–19)	<0.001††

Values in parentheses are percentages unless indicated otherwise; *values are mean(s.d.) and †median (i.q.r.). ‡Number of patients with data available for the stated factor. §'Actual' gives measurements recorded on day 4, whereas last measure carried forward (LMCF) fills in missing data using the most recent value obtained before day 4, where possible. MIO, minimally invasive operation; LN, lymph node; CRP, C-reactive protein; WCC, white cell count. #Kendall's τ , except **Kruskal–Wallis test and ††Jonckheere–Terpstra test.

Survival data

Patient survival was calculated from the time of surgery, and censored at the final follow-up. For analysis of recurrence-free survival, patients with R2 resections were excluded. Although inpatient death is considered a complication in the Clavien–Dindo grading system (grade V), it was not meaningful to include these patients in the comparisons of long-term survival by complication grade. As a result, all patients who died as inpatients, and those who died or were lost to follow-up

within 90 days of surgery, were excluded from survival analyses.

Statistical analysis

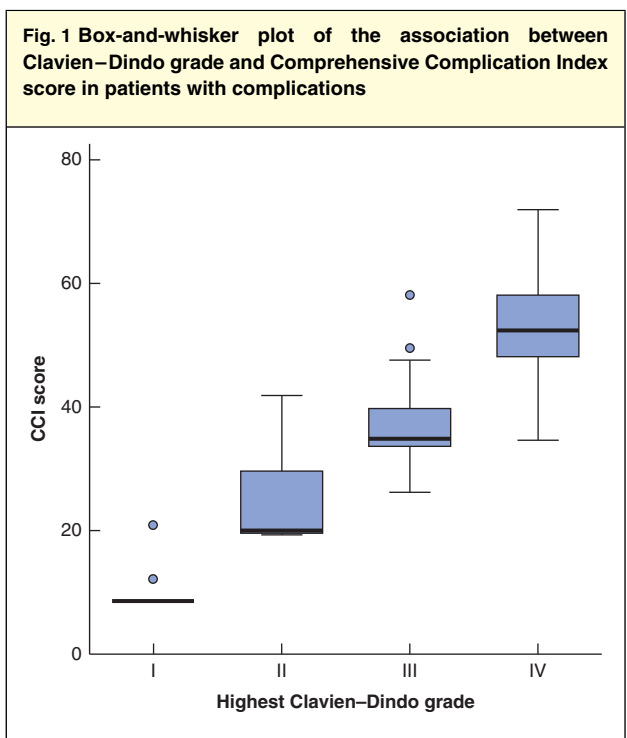
Initially, the demographics of the cohort were summarized, using mean(s.d.) and median (i.q.r.) values as appropriate. Patients were then divided into groups based on the highest Clavien–Dindo complication grade: no complication, grades I–II and grades III–V. Comparisons between these

Table 4 Postoperative complications		
	Total n‡	No. of patients*
Highest Clavien–Dindo grade	430	
No complications		138 (32.1)
I		21 (4.9)
II		123 (28.6)
III		67 (15.6)
IV		61 (14.2)
V (death)		20 (4.7)
CCI score†	383	21 (0–40)
Type of complication	430	
None		138 (32.1)
Medical only		47 (10.9)
Surgical only		55 (12.8)
Both medical and surgical		190 (44.2)
Infective complication	430	214 (49.8)
Pulmonary complication	430	200 (46.5)
Gastrointestinal complication	430	107 (24.9)
Cardiac complication	430	91 (21.2)
Neurological/psychiatric complication	430	21 (4.9)
Wound/diaphragm complication	430	18 (4.2)
Urological complication	430	14 (3.3)
Thromboembolic complication	430	6 (1.4)
Anastomotic leak grade	430	
No leak		363 (84.4)
I		14 (3.3)
II		18 (4.2)
III		35 (8.1)
Conduit necrosis grade	430	
No necrosis		416 (96.7)
I		1 (0.2)
II		5 (1.2)
III		8 (1.9)
Chyle leak grade	430	
No leak		399 (92.8)
I		19 (4.4)
II		3 (0.7)
III		9 (2.1)
Vocal cord palsy grade	430	
No palsy		417 (97.0)
I		8 (1.9)
II		4 (0.9)
III		1 (0.2)

*With percentages in parentheses unless indicated otherwise; †values are median (i.q.r.). ‡Number of patients with data available for the stated factor. CCI, Comprehensive Complication Index.

groups were performed using Jonckheere–Terpstra tests for continuous variables and Kendall’s τ for ordinal variables. For nominal variables, the complication grade was compared across categories using the Kruskal–Wallis test.

Postoperative patient survival was compared across complication grades using Kaplan–Meier curves, with



The plot is based on 242 patients, after excluding 138 with no complications, 20 who died after surgery (Clavien–Dindo grade V/Comprehensive Complication Index (CCI) score 100) and 30 with no CCI score recorded. Median values, interquartile ranges and ranges (excluding outliers) are denoted by horizontal bars, boxes and error bars respectively ($r_s = 0.91$, $P < 0.001$).

univariable Cox regression models to produce hazard ratios (HRs). Multivariable Cox regression models were then produced, to account for the effects of potentially confounding factors, using a backwards stepwise approach to variable selection. All preoperative and intraoperative factors with at least 90 per cent completeness of data were considered initially for inclusion in the models. Before analysis, continuous variables were divided into categories based on the quartiles of the distribution, in order to improve model fit. Factors selected for inclusion by the stepwise procedure were then entered into a new model, to maximize the included sample size, by preventing exclusions owing to missing data for non-significant factors. As a sensitivity analysis, factors with less than 90 per cent data completeness were then added to the final model, to test whether any of these were significant independent predictors of patient outcomes.

All analyses were performed using IBM SPSS® version 22 (IBM, Armonk, New York, USA), with $P < 0.050$ deemed to be indicative of statistical significance throughout.

Results

Data were available for a total of 430 patients undergoing surgery between 1 January 2006 and 28 February 2017. The mean(s.d.) age at surgery was 64.9(9.4) years, and the majority of patients were men (79.5 per cent). The majority of patients had preoperative chemotherapy (342 of 430, 79.5 per cent), with the remainder receiving no neoadjuvant therapy. Postoperative histological examination revealed that the majority of the 430 patients had either adenocarcinoma (337, 78.4 per cent) or squamous cell carcinoma (70, 16.3 per cent); the rest had either adenosquamous carcinoma (8, 1.9 per cent) or another

malignant cancer (15, 3.5 per cent). Complete patient details including tumour and perioperative/postoperative factors are shown in *Tables 1–3*.

Complications

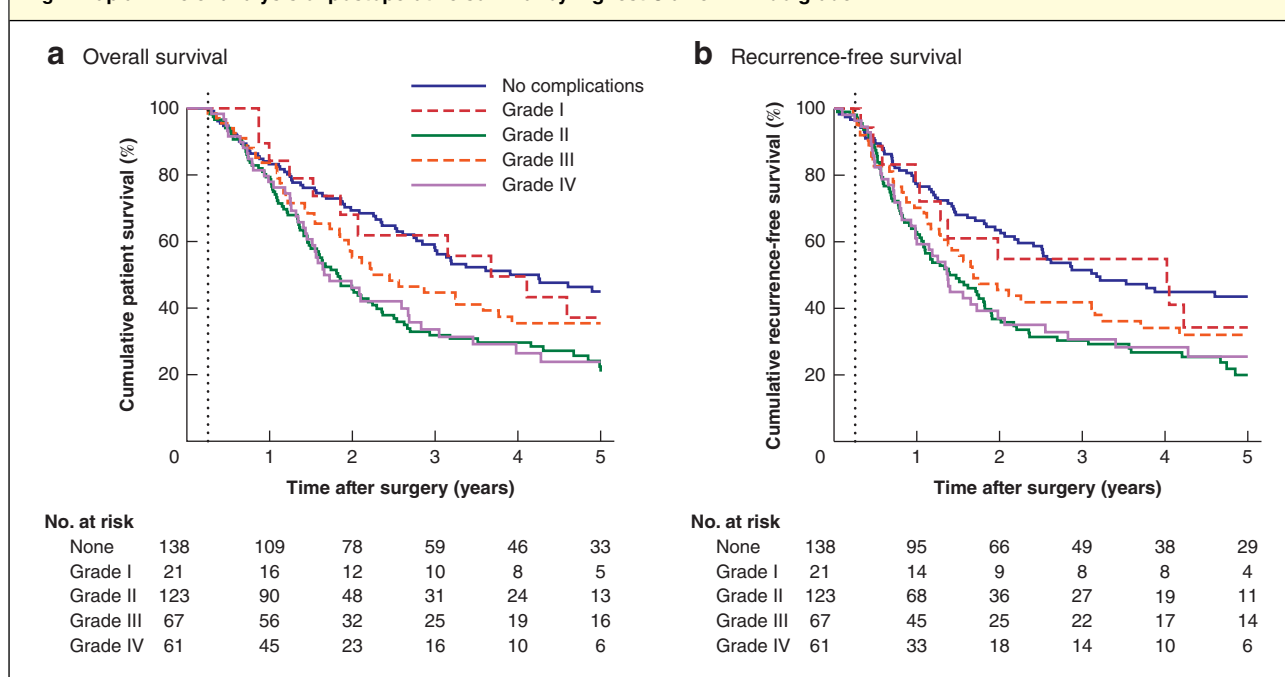
A total of 292 patients (67.9 per cent) developed postoperative complications, the most common being infection (49.8 per cent), pulmonary (46.5 per cent) and gastrointestinal (24.9 per cent) related (*Table 4*). For 144 patients (33.5 per cent), the highest recorded Clavien–Dindo grade was I or II, and 128 patients (29.8 per cent) had grade III

Table 5 Survival outcomes by Clavien–Dindo grade

	Overall survival				Recurrence-free survival†			
	<i>n</i>	Median (months)‡	Hazard ratio§	<i>P</i> §	<i>n</i>	Median (months)‡	Hazard ratio§	<i>P</i> §
Highest Clavien–Dindo grade				<0.001				<0.001
No complications	133	51.0	1.00 (reference)		126	38.1	1.00 (reference)	
I	19	44.1	1.28 (0.71, 2.31)	0.419	18	48.3	1.42 (0.79, 2.59)	0.245
II	118	21.6	2.01 (1.46, 2.75)	<0.001	113	17.7	1.97 (1.43, 2.73)	<0.001
III	67	26.7	1.40 (0.96, 2.04)	0.081	64	20.2	1.50 (1.03, 2.20)	0.036
IV	59	19.9	1.97 (1.34, 2.90)	<0.001	57	16.5	1.95 (1.32, 2.88)	<0.001

Values in parentheses are 95 per cent confidence intervals. Patients who died or were lost to follow-up within 90 days were excluded; †additionally excludes 18 patients with R2 or unknown resection status. ‡Kaplan–Meier estimates; §univariable Cox regression models.

Fig. 2 Kaplan–Meier analysis of postoperative survival by highest Clavien–Dindo grade



a Overall and **b** recurrence-free survival. Patients who died or were lost to follow-up within 90 days (dotted line) were excluded. The plot of recurrence-free survival additionally excludes 18 patients with R2 or unknown resection status.

or IV as the highest recorded grade. The remaining 20 patients died in hospital (Clavien–Dindo grade V). The CCI score was available for only 383 patients (median 21 (i.q.r. 0–40)). The CCI score and Clavien–Dindo grade were highly correlated ($r_s = 0.91$, $P < 0.001$) (Fig. 1), so only the Clavien–Dindo system was used in subsequent analyses.

Factors associated with complication grade

Patients who developed complications were generally similar to those without complications with regard to demographic (Table 1) and tumour-related (Table 2) factors. The only significant differences were in the ASA grade ($P = 0.032$) and ECOG score ($P = 0.041$), both of which increased with complication grade. Of the postoperative factors considered (Table 3), patients with higher-grade complications required significantly more units of blood,

and also had significantly higher C-reactive protein (CRP) and lower albumin levels on postoperative day 4 (all $P < 0.001$). Patients with Clavien–Dindo grade III–V complications were significantly more likely than those with either no or minor complications to return to both theatre (87 of 148 (58.8 per cent) versus 3 of 282 (1.1 per cent) respectively; $P < 0.001$) and ICU (78 of 146 (53.4 per cent) versus 8 of 280 (2.9 per cent); $P < 0.001$). Consequently, the lengths of ITU and total hospital stay were significantly longer for patients with Clavien–Dindo grade III–V complications (both $P < 0.001$).

Survival by complication grade

After exclusion of the 20 patients who died in hospital, a further 14 patients who were lost to follow-up less than 90 days after surgery were also excluded. The remaining 396 patients had a median follow-up of 23.6

Table 6 Multivariable analysis of survival outcomes

	Overall survival		Recurrence-free survival	
	Hazard ratio	P	Hazard ratio	P
Highest Clavien–Dindo grade		0.029		0.041
No complications	1.00 (reference)		1.00 (reference)	
I	0.97 (0.51, 1.83)	0.915	1.37 (0.72, 2.62)	0.341
II	1.64 (1.14, 2.35)	0.007	1.63 (1.13, 2.35)	0.009
III	1.24 (0.80, 1.93)	0.336	1.22 (0.78, 1.90)	0.376
IV	1.74 (1.13, 2.70)	0.013	1.82 (1.17, 2.82)	0.007
ASA grade		0.035		0.030
I	1.00 (reference)		1.00 (reference)	
II	0.64 (0.45, 0.90)	0.011	0.64 (0.45, 0.91)	0.013
III	0.91 (0.62, 1.35)	0.655	0.88 (0.59, 1.30)	0.526
IV	0.56 (0.21, 1.47)	0.241	0.42 (0.16, 1.11)	0.080
pM1 status	5.34 (2.36, 12.05)	< 0.001	2.97 (1.13, 7.80)	0.027
% of lymph nodes involved		< 0.001		< 0.001
0	1.00 (reference)		1.00 (reference)	
1–5	1.54 (0.97, 2.45)	0.065	1.68 (1.05, 2.69)	0.030
6–15	2.98 (2.04, 4.35)	< 0.001	2.90 (1.98, 4.24)	< 0.001
> 15	4.93 (3.33, 7.30)	< 0.001	5.18 (3.44, 7.79)	< 0.001
R1 status	n.s.		1.33 (0.99, 1.79)	0.057
Distal margin involved	0.27 (0.08, 0.88)	0.029	n.s.	
Albumin (g/l) on day 4*		< 0.001		0.015
< 24	1.00 (reference)		1.00 (reference)	
24–26	0.60 (0.40, 0.91)	0.015	0.75 (0.50, 1.13)	0.171
27–29	0.50 (0.34, 0.75)	< 0.001	0.61 (0.41, 0.90)	0.012
≥ 30	0.45 (0.30, 0.67)	< 0.001	0.54 (0.37, 0.81)	0.003

Values in parentheses are 95 per cent confidence intervals. Cox regression models were used with a backwards stepwise approach to variable selection; all factors from Tables 1–3 with at least 90 per cent completeness of data were considered for inclusion in the models, with the exception of total units of blood, return to theatre/ICU and length of hospital/ICU stay. The backwards stepwise approach was then repeated for the factors selected by the initial model, to maximize the included sample size. The final models were based on 339 patients (218 events) for overall survival and 331 patients (214 events) for recurrence-free survival. The latter model excluded patients with R2 resection status. *A last measure carried forwards approach was used to fill in missing data using the most recent measurement obtained before day 4, where possible. n.s., Not selected for inclusion in the final model by the stepwise procedure.

(i.q.r. 13.5–50.7) months, during which there were 258 deaths, giving Kaplan–Meier–estimated overall survival rates of 81.4, 44.5 and 33.1 at 1, 3 and 5 years respectively.

Patient survival was found to differ significantly by Clavien–Dindo grade ($P < 0.001$) (Table 5 and Fig. 2). Patients with grade I complications had similar overall survival to those with no complications (median 44 versus 51 months respectively) (HR 1.28, $P = 0.419$). However, higher-grade complications were associated with significantly shorter survival: median survival 22, 27 and 20 months for Clavien–Dindo grades II, III and IV respectively. Analysis of recurrence-free survival gave similar results.

Multivariable survival analysis included all of the factors in Tables 1–3, alongside the Clavien–Dindo complication grade, except for total number of units of blood, return to theatre/ICU and lengths of hospital/ITU stay, as these were consequences of complications. Overall stage and number of lymph nodes involved were also excluded, as these were highly correlated with TNM staging and proportion of lymph nodes involved respectively. Finally, the ECOG score, tumour depth, length and width, and the presence of perineural invasion were initially excluded, as the amount of missing data exceeded 10 per cent.

For patient survival, the resulting model (Table 6) found increasing proportions of lymph nodes involved, unsuspected M1 disease on postoperative histology and low albumin levels on postoperative day 4 to be the strongest predictors of poor prognosis (all $P < 0.001$). After accounting for these and the other factors in the model, the association between Clavien–Dindo complication grade and overall survival remained significant ($P = 0.029$). The results were similar to those observed in the univariable analysis, with Clavien–Dindo grade I complications not found to influence survival significantly (HR 0.97, $P = 0.915$), but grade II (HR 1.64, $P = 0.007$) and grade IV (HR 1.74, $P = 0.013$) being significant independent predictors of poorer overall survival. However, overall survival after Clavien–Dindo grade III complications was not significantly different to that after no complications (HR 1.24, $P = 0.336$). Analysis of recurrence-free survival returned similar results. As a sensitivity analysis, the factors excluded owing to excessive missing data were then added to the final models; none was found to be a significant independent predictor of either overall or recurrence-free survival.

Discussion

Clavien–Dindo grade II and IV complications were independently associated with significantly shorter overall and

recurrence-free postoperative survival in patients undergoing oesophagectomy for oesophageal cancer.

There are several possible reasons for the association between complications and poorer prognosis. Complications may lead to increased inflammation, affecting the immune system of patients after surgery and leading to increased production of proinflammatory cytokines such as interleukin (IL) 6 and IL-8²⁴. This has been hypothesized to decrease the ability of the immune system to repress tumour recurrence. Previous reports^{25,26} have similarly implicated a variety of inflammatory mediators in cancer recurrence and progression. Inflammatory pathways acting within the tumour microenvironment are also known to contribute to tumour growth, and to promote both survival and the growth of micrometastases, locally and at distant sites²⁷. The finding that there was a correlation between the Clavien–Dindo grade and both CRP and albumin levels on postoperative day 4 could be interpreted as supporting evidence for this hypothesis. Preoperative albumin concentration is a well known prognostic marker; however, fewer studies have assessed the prognostic value of postoperative albumin¹⁸. Although a decrease in albumin after surgery probably reflects the systemic inflammatory response to surgery and was associated with higher-grade complications, decreased albumin levels have been shown to be associated with other adverse outcomes^{28–30} and were independently predictive of survival in multivariable analysis in the present study.

This study included a large cohort of patients with oesophageal cancer, with almost complete follow-up, and loss to follow-up was accounted for in the modelling. The analysis of individual complication grades builds on the results of a recent systematic review³, allowing a more in-depth picture of how complications affect overall survival and disease recurrence. Similar rates of complications and anastomotic leak have been reported in other recent Western cohorts^{31–34}. It is worth noting that the present series included learning curves for minimally invasive oesophagectomy³⁵, and a possible increase in leak rate as a result of the vascular endothelial growth factor inhibitors used in patients who took part in the ST03 trial³⁶.

Limitations of the study include the length of the study period, which included the introduction of minimally invasive oesophagectomy with a number of different techniques. Neoadjuvant therapies changed over the study period, with initially the MAGIC³⁷ and then the OE02³⁸, OE05³⁹ and ST03³⁶ trials ushering in an era of increasingly potent perioperative chemotherapy.

This study specifically analysed the impact of individual Clavien–Dindo grades on survival. Other studies generally combine grade III and IV complications, owing

to sample size, and many have not analysed grade I or II complications at all^{3,6–9,40}. In the present study, Clavien–Dindo grade II and IV complications were independently associated with decreased postoperative overall and recurrence-free survival. However, although grade III complications were significantly associated with overall survival in univariable analysis, there was no significant association in multivariable analysis. This may be due to the relatively small number of patients with grade III complications and therefore an insufficient sample size for multivariable significance. An alternative explanation is that the early and aggressive treatment of complications with radiological, endoscopic or surgical methods could lead to a shorter period of physiological stress for patients, and thereby affect oncological outcomes. ‘Failure to rescue’ is a well known phenomenon^{41,42}, impacting on short-term survival after oesophagectomy, and possibly explaining differences in mortality between high- and low-volume centres. Failure to identify complications early and treat patients may also contribute to a long-term impact of complications on patient survival^{41–43}.

As complications were independently predictive of survival, regardless of tumour stage or grade, it follows that reducing the likelihood of complications may improve survival. Recent studies have focused on prehabilitation⁴⁴, enhanced recovery after surgery⁴⁵, intensive postoperative physiotherapy and incentive spirometry⁴⁶, with mixed findings. Additionally, minimally invasive and hybrid oesophagectomy techniques appear to reduce pulmonary complications^{47,48}. In the present study, no association existed between operative technique and complications, although the impact of learning curves merits consideration³⁵. Techniques that might decrease anastomotic leak rates, such as omental wrapping⁴⁹ and indocyanine green⁵⁰ assessment, may impact on survival in the future.

Acknowledgements

J.R.B. and A.C.H. contributed equally to this work.

The authors thank all consultant upper gastrointestinal surgeons from UHB and the Upper GI MDT for allowing their patients to be included in the study.

This study was completed with funding from the Queen Elizabeth Hospital Birmingham Charity (Upper Gastrointestinal Fund) and the Upper G.I. Blues charity, Sandwell. *Disclosure*: The authors declare no conflict of interest.

References

- 1 Global Burden of Disease Cancer Collaboration, Fitzmaurice C, Allen C, Barber RM, Barregard L, Bhutta ZA, Brenner H *et al*. Global, regional, and national cancer incidence, mortality, years of life lost, years lived with disability, and disability-adjusted life-years for 32 cancer groups, 1990 to 2015: a systematic analysis for the global burden of disease study. *JAMA Oncol* 2017; **3**: 524–548.
- 2 Arnold M, Soerjomataram I, Ferlay J, Forman D. Global incidence of oesophageal cancer by histological subtype in 2012. *Gut* 2015; **64**: 381–387.
- 3 Booka E, Takeuchi H, Suda K, Fukuda K, Nakamura R, Wada N *et al*. Meta-analysis of the impact of postoperative complications on survival after oesophagectomy for cancer. *BJS Open* 2018; **2**: 276–284.
- 4 Jamieson GG, Mathew G, Ludemann R, Wayman J, Myers JC, Devitt PG. Postoperative mortality following oesophagectomy and problems in reporting its rate. *Br J Surg* 2004; **91**: 943–947.
- 5 Takeuchi H, Miyata H, Gotoh M, Kitagawa Y, Baba H, Kimura W. A risk model for esophagectomy using data of 5354 patients included in a Japanese nationwide web-based database. *Ann Surg* 2014; **260**: 259–266.
- 6 Booka E, Takeuchi H, Nishi T, Matsuda S, Kaburagi T, Fukuda K *et al*. The impact of postoperative complications on survivals after esophagectomy for esophageal cancer. *Medicine (Baltimore)* 2015; **94**: e1369.
- 7 Luc G, Durand M, Chiche L, Collet D. Major post-operative complications predict long-term survival after esophagectomy in patients with adenocarcinoma of the esophagus. *World J Surg* 2015; **39**: 216–222.
- 8 Baba Y, Yoshida N, Shigaki H, Iwatsuki M, Miyamoto Y, Sakamoto Y *et al*. Prognostic impact of postoperative complications in 502 patients with surgically resected esophageal squamous cell carcinoma: a retrospective single-institution study. *Ann Surg* 2016; **264**: 305–311.
- 9 Kataoka K, Takeuchi H, Mizusawa J, Igaki H, Ozawa S, Abe T *et al*. Prognostic impact of postoperative morbidity after esophagectomy for esophageal cancer: exploratory analysis of JCOG9907. *Ann Surg* 2017; **265**: 1152–1157.
- 10 Schieman C, Wigle DA, Deschamps C, Nichols Iii FC, Cassivi SD, Shen KR *et al*. Patterns of operative mortality following esophagectomy. *Dis Esophagus* 2012; **25**: 645–651.
- 11 Low DE, Alderson D, Ceconello I, Chang AC, Darling GE, D’Journo XB *et al*. International consensus on standardization of data collection for complications associated with esophagectomy: esophagectomy complications consensus group (ECCG). *Ann Surg* 2015; **262**: 286–294.
- 12 Low DE, Bodnar A. Update on clinical impact, documentation, and management of complications associated with esophagectomy. *Thorac Surg Clin* 2013; **23**: 535–550.
- 13 Hii MW, Smithers BM, Gotley DC, Thomas JM, Thomson I, Martin I *et al*. Impact of postoperative morbidity on long-term survival after oesophagectomy. *Br J Surg* 2013; **100**: 95–104.
- 14 Weijs TJ, Ruurda JP, Nieuwenhuijzen GAP, van Hillegersberg R, Luyer MDP. Strategies to reduce

- pulmonary complications after esophagectomy. *World J Gastroenterol* 2013; **19**: 6509–6514.
- 15 Mirnezami A, Mirnezami R, Chandrakumaran K, Sasapu K, Sagar P, Finan P. Increased local recurrence and reduced survival from colorectal cancer following anastomotic leak: systematic review and meta-analysis. *Ann Surg* 2011; **253**: 890–899.
 - 16 Lagarde SM, de Boer JD, ten Kate FJ, Busch OR, Obertop H, van Lanschot JJ. Postoperative complications after esophagectomy for adenocarcinoma of the esophagus are related to timing of death due to recurrence. *Ann Surg* 2008; **247**: 71–76.
 - 17 Quinn LM, Hollis AC, Hodson J, Elshafie MA, Hallissey MT, Whiting JL *et al.* Prognostic significance of circumferential resection margin involvement in patients receiving potentially curative treatment for oesophageal cancer. *Eur J Surg Oncol* 2018; **44**: 1268–1277.
 - 18 Wen J, Bedford M, Begum R, Mitchell H, Hodson J, Whiting J *et al.* The value of inflammation based prognostic scores in patients undergoing surgical resection for oesophageal and gastric carcinoma. *J Surg Oncol* 2018; **117**: 1697–1707.
 - 19 Matthews J, Bhandari S, Mitchell H, Whiting J, Vohra R, Hodson J *et al.* Diaphragmatic herniation following esophagogastric resectional surgery: an increasing problem with minimally invasive techniques?: Post-operative diaphragmatic hernias. *Surg Endosc* 2016; **30**: 5419–5427.
 - 20 Hollis AC, Quinn LM, Hodson J, Evans E, Plowright J, Begum R *et al.* Prognostic significance of tumor length in patients receiving esophagectomy for esophageal cancer. *J Surg Oncol* 2017; **116**: 1114–1122.
 - 21 Bundred J, Hollis AC, Hodson J, Hallissey MT, Whiting JL, Griffiths EA. Validation of the NUn score as a predictor of anastomotic leak and major complications after Esophagectomy. *Dis Esophagus* 2019; <https://doi.org/10.1093/dote/doz041> [Epub ahead of print].
 - 22 Evans R, Bundred JR, Kaur P, Hodson J, Griffiths EA. Meta-analysis of the influence of a positive circumferential resection margin in oesophageal cancer. *BJS Open* 2019; **3**: 595–605.
 - 23 Slankamenac K, Nederlof N, Pessaux P, de Jonge J, Wijnhoven BP, Breitenstein S *et al.* The comprehensive complication index: a novel and more sensitive endpoint for assessing outcome and reducing sample size in randomized controlled trials. *Ann Surg* 2014; **260**: 757–762.
 - 24 Okamura A, Takeuchi H, Matsuda S, Ogura M, Miyasho T, Nakamura R *et al.* Factors affecting cytokine change after esophagectomy for esophageal cancer. *Ann Surg Oncol* 2015; **22**: 3130–3135.
 - 25 Kumari N, Dwarakanath BS, Das A, Bhatt AN. Role of interleukin-6 in cancer progression and therapeutic resistance. *Tumour Biol* 2016; **37**: 11 553–11 572.
 - 26 Elaraj DM, Weinreich DM, Varghese S, Puhmann M, Hewitt SM, Carroll NM *et al.* The role of interleukin 1 in growth and metastasis of human cancer xenografts. *Clin Cancer Res* 2006; **12**: 1088–1096.
 - 27 Hanahan D, Weinberg RA. Hallmarks of cancer: the next generation. *Cell* 2011; **144**: 646–674.
 - 28 Matsuda S, Niihara M, Tsubosa Y, Sato H, Takebayashi K, Kawamorita K *et al.* Clinical significance of postoperative recovery of serum albumin levels in patients with esophageal cancer who underwent transthoracic esophagectomy. *Surg Today* 2016; **46**: 1138–1145.
 - 29 Goh SL, De Silva RP, Dhital K, Gett RM. Is low serum albumin associated with postoperative complications in patients undergoing oesophagectomy for oesophageal malignancies? *Interact Cardiovasc Thorac Surg* 2015; **20**: 107–113.
 - 30 Scarpa M, Cavallin F, Saadeh LM, Pinto E, Alfieri R, Cagol M *et al.* Hybrid minimally invasive esophagectomy for cancer: impact on postoperative inflammatory and nutritional status. *Dis Esophagus* 2016; **29**: 1064–1070.
 - 31 Struecker B, Andreou A, Chopra S, Heilmann AC, Spenke J, Denecke C *et al.* Evaluation of anastomotic leak after esophagectomy for esophageal cancer: typical time point of occurrence, mode of diagnosis, value of routine radiocontrast agent studies and therapeutic options. *Dig Surg* 2018; **35**: 419–426.
 - 32 Seesing MFJ, Gisbertz SS, Goense L, van Hillegersberg R, Kroon HM, Lagarde SM *et al.* A propensity score matched analysis of open *versus* minimally invasive transthoracic esophagectomy in the Netherlands. *Ann Surg* 2017; **266**: 839–846.
 - 33 Findlay L, Yao C, Bennett DH, Byrom R, Davies N. Non-inferiority of minimally invasive oesophagectomy: an 8-year retrospective case series. *Surg Endosc* 2017; **31**: 3681–3689.
 - 34 Ip B, Ng KT, Packer S, Paterson-Brown S, Couper GW. High serum lactate as an adjunct in the early prediction of anastomotic leak following oesophagectomy. *Int J Surg* 2017; **46**: 7–10.
 - 35 van Workum F, Stenstra MHBC, Berkelmans GHK, Slaman AE, van Berge Henegouwen MI, Gisbertz SS *et al.* Learning curve and associated morbidity of minimally invasive esophagectomy: a retrospective multicenter study. *Ann Surg* 2019; **269**: 88–94.
 - 36 Cunningham D, Stenning SP, Smyth EC, Okines AF, Allum WH, Rowley S *et al.* Peri-operative chemotherapy with or without bevacizumab in operable oesophagogastric adenocarcinoma (UK Medical Research Council ST03): primary analysis results of a multicentre, open-label, randomised phase 2–3 trial. *Lancet Oncol* 2017; **18**: 357–370.
 - 37 Reece-Smith AM, Saha S, Cunnell ML, Hameed K, Bessell EM, Duffy JP *et al.* MAGIC in practice: experience of peri-operative ECF/X chemotherapy in gastro-esophageal adenocarcinomas. *J Surg Oncol* 2012; **106**: 748–752.
 - 38 Allum WH, Stenning SP, Bancewicz J, Clark PI, Langley RE. Long-term results of a randomized trial of surgery with or without preoperative chemotherapy in esophageal cancer. *J Clin Oncol* 2009; **27**: 5062–5067.
 - 39 Alderson D, Cunningham D, Nankivell M, Blazeby JM, Griffin SM, Crellin A *et al.* Neoadjuvant cisplatin and

- fluorouracil *versus* epirubicin, cisplatin, and capecitabine followed by resection in patients with oesophageal adenocarcinoma (UK MRC OE05): an open-label, randomised phase 3 trial. *Lancet Oncol* 2017; **18**: 1249–1260.
- 40 McSorley ST, Horgan PG, McMillan DC. The impact of the type and severity of postoperative complications on long-term outcomes following surgery for colorectal cancer: a systematic review and meta-analysis. *Crit Rev Oncol Hematol* 2016; **97**: 168–177.
- 41 Almoudaris AM, Mamidanna R, Bottle A, Aylin P, Vincent C, Faiz O *et al.* Failure to rescue patients after reintervention in gastroesophageal cancer surgery in England. *JAMA Surg* 2013; **148**: 272–276.
- 42 Ghaferi AA, Birkmeyer JD, Dimick JB. Hospital volume and failure to rescue with high-risk surgery. *Med Care* 2011; **49**: 1076–1081.
- 43 Busweiler LA, Henneman D, Dikken JL, Fiocco M, van Berge Henegouwen MI, Wijnhoven BP *et al.*; Dutch Upper GI Cancer Audit group. Failure-to-rescue in patients undergoing surgery for esophageal or gastric cancer. *Eur J Surg Oncol* 2017; **43**: 1962–1969.
- 44 Guinan EM, Dowds J, Donohoe C, Reynolds JV, Hussey J. The physiotherapist and the esophageal cancer patient: from prehabilitation to rehabilitation. *Dis Esophagus* 2017; **30**: 1–12.
- 45 Low DE, Allum W, De Manzoni G, Ferri L, Immanuel A, Kuppusamy M *et al.* Guidelines for perioperative care in esophagectomy: Enhanced Recovery After Surgery (ERAS[®]) Society recommendations. *World J Surg* 2019; **43**: 299–330.
- 46 do Nascimento Junior P, Módolo NS, Andrade S, Guimarães MM, Braz LG, El Dib R. Incentive spirometry for prevention of postoperative pulmonary complications in upper abdominal surgery. *Cochrane Database Syst Rev* 2014; (2)CD006058.
- 47 Biere SS, van Berge Henegouwen MI, Maas KW, Bonavina L, Rosman C, Garcia JR *et al.* Minimally invasive *versus* open oesophagectomy for patients with oesophageal cancer: a multicentre, open-label, randomised controlled trial. *Lancet* 2012; **379**: 1887–1892.
- 48 Mariette C, Markar SR, Dabakuyo-Yonli TS, Meunier B, Pezet D, Collet D *et al.*; Fédération de Recherche en Chirurgie (FRENCH) and French Eso-Gastric Tumors (FREGAT) Working Group. Hybrid minimally invasive esophagectomy for esophageal cancer. *N Engl J Med* 2019; **380**: 152–162.
- 49 Liu QX, Deng XF, Hou B, Min JX, Dai JG. Preventing and localizing esophagogastric anastomosis leakage by sleeve-wrapping of the pedicled omentum. *World J Gastroenterol* 2014; **20**: 16282–16286.
- 50 Kitagawa H, Namikawa T, Iwabu J, Fujisawa K, Uemura S, Tsuda S *et al.* Assessment of the blood supply using the indocyanine green fluorescence method and postoperative endoscopic evaluation of anastomosis of the gastric tube during esophagectomy. *Surg Endosc* 2018; **32**: 1749–1754.