

# Tests in short supply? Try group testing

**Christopher R. Bilder, Peter C. Iwen, Baha Abdulhamid, Joshua M. Tebbs and Christopher S. McMahan** explain how, by pooling specimens, testing capacity for SARS-CoV-2 can be increased

statistical principles – a consequence of the lack of statistical literacy that pervades the general population. (If the general population insisted on the use of random sampling to assess how widespread the virus is, leaders would not likely resist.) Or it could reflect concern over the limited availability of tests and a desire to devote all of these limited tests to those who show symptoms of novel coronavirus infection.

Unfortunately, this might be inadvertently helping the novel coronavirus spread. If a society does not understand the extent of infection in the general population or the virus's infectivity, how can it prepare and optimally devote its resources to slow the spread of the virus? How does it decide what preventive measures are appropriate or necessary? How does it minimize the likelihood that the virus spreads to the point that the capacity of the hospital system is overwhelmed? Most crucially, how does it know if it is making progress or if conditions are deteriorating?

Without the evidence that a random sample of the general population would provide, we are operating in the dark. While we operate in the dark, preventable deaths will accumulate, and we will continue to take measures that are not only ineffective, but also unnecessarily costly.

Most of the world still lacks the ability to test a large number of people, and this understandably makes even those leaders who appreciate sampling hesitant to test a random sample of the general population. But the bottom line is, we need more coronavirus tests than we think we need. ■

**C**ough, fever, and difficulty breathing are all symptoms of Covid-19, but symptoms alone may not qualify someone to be tested for SARS-CoV-2. In the USA (as of 9 April 2020), only those individuals who meet stringent requirements, such as hospitalisation with no other pathogen detected or exposure to an individual with Covid-19, are tested due to the shortage of testing resources. Shortages like this around the world have hampered efforts to understand Covid-19 and to prevent its spread, especially by asymptomatic individuals.

In similar situations where resources are in short supply, a procedure known as *group testing* (also known as pooled testing and specimen pooling) is often employed. Its most basic implementation begins by obtaining specimens from a set number of individuals and then pooling parts of each specimen into a "group" for a single test. If the group tests negative, all of its members are declared negative. If the group tests positive, each member has the remainder of their original specimen tested separately to determine the positive/negative outcome. This process of forming groups and testing is repeated over all individuals that need to be tested. Robert Dorfman originally proposed this particular testing algorithm to screen US soldiers for syphilis during World War II, and the process is often referred to now as "Dorfman testing".<sup>1</sup>

When disease prevalence in a population is small (less than 15%), group testing results in a significant reduction in the number of tests performed. Group testing is used in a vast number of applications, including blood donation screening for infectious diseases ([rcblood.org/3eQ2NHV](http://rcblood.org/3eQ2NHV)), sexually transmitted disease detection,<sup>2</sup> bacteria in food detection,<sup>3</sup> and chemical compound discovery for use in new pharmaceuticals.<sup>4</sup> Group testing was even investigated for the influenza pandemic (H1N1) of 2009.<sup>5</sup>

There are two important considerations for applying group testing. First, pooling specimens leads to each individual specimen being a smaller portion of the whole. This dilution could make it more difficult to detect the pathogen, thus potentially producing false negatives. Second, a group size needs to be selected. Too large a group size results in too many groups testing positive, leading to an exorbitant number of separate tests. Too small a group size results in many more group tests than needed. To prevent this from occurring, the expected number of tests is used to determine the most efficient group size. In other words, we want the group size that gives the smallest average number of tests if group testing was applied to a continuous stream of specimens coming into a laboratory. Our box (page 16) presents the technical details for selecting this group size.

The Nebraska Public Health Laboratory has been a leader among laboratories with regard to applying group testing to detect SARS-CoV-2. Their positivity rate was estimated to be 5% from initially testing specimens separately. The most efficient group size for Dorfman testing is 5 with this rate, resulting in 57% fewer tests on average than when testing specimens separately. Validation of the group testing process showed ▶

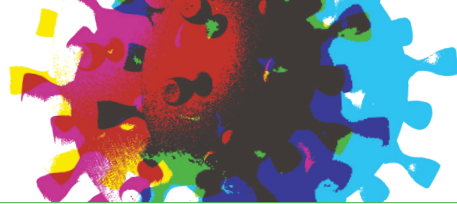
**Christopher R. Bilder** is professor in the Department of Statistics at the University of Nebraska-Lincoln.

**Peter C. Iwen** is professor in the Department of Pathology and Microbiology at the University of Nebraska Medical Center and director of the Nebraska Public Health Laboratory.

**Baha Abdulhamid** is assistant professor in the Department of Pathology and Microbiology at the University of Nebraska Medical Center and faculty scientist at the Nebraska Public Health Laboratory.

**Joshua M. Tebbs** is professor and chair of the Department of Statistics at the University of South Carolina.

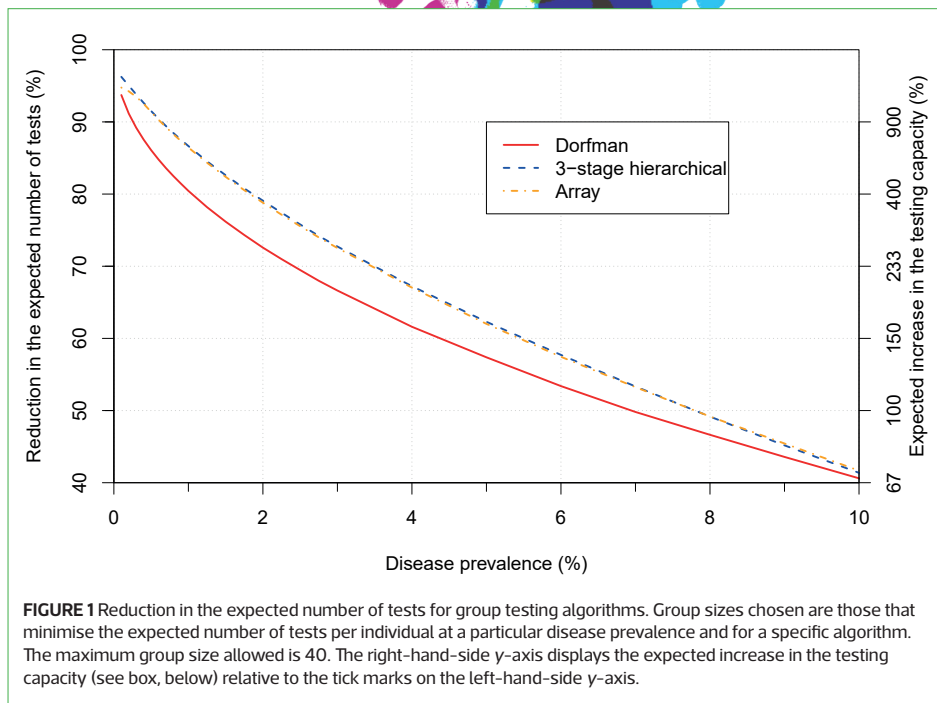
**Christopher S. McMahan** is associate professor in the School of Mathematical and Statistical Sciences at Clemson University.



► that pooling five specimens together did not adversely affect the detection of positive specimens with a low viral load. After 6 days of actual implementation, Dorfman testing resulted in 58% fewer tests than if the same number of individuals had been tested separately. From another perspective, 137% more individuals were tested using the same resources as would be needed with separate testing.

Figure 1 illustrates the expected efficiency of Dorfman testing in general. The reduction in the expected number of tests grows as the disease prevalence decreases, leading to an increase in testing capacity. Especially of interest is the extremely large increase in testing capacity for very low disease prevalence. This would likely occur if the stringent requirements for individuals to be tested were lessened to allow for testing asymptomatic individuals. For example, the increase in expected testing capacity is 411% when disease prevalence is 1%.

Other group testing algorithms can increase testing capacity even further. This occurs for three-stage hierarchical testing as shown in Figure 1. The algorithm is similar to Dorfman testing, but groups that test positive are split into subgroups for further testing. If any subgroup tests positive, each of its members is tested separately. Figure 1 also shows that array testing increases testing capacity further as well. This algorithm involves arranging specimens into a matrix-like structure, where specimens are pooled by rows and by columns to form groups. Those specimens at intersections of positive rows and columns are retested to determine disease outcome. Many other group testing algorithms exist, including those that take advantage of individual-specific probabilities of positivity to increase testing efficiency. Bilder provides introductions to these and other group testing algorithms ([bit.ly/3eloRE4](http://bit.ly/3eloRE4)).



**FIGURE 1** Reduction in the expected number of tests for group testing algorithms. Group sizes chosen are those that minimise the expected number of tests per individual at a particular disease prevalence and for a specific algorithm. The maximum group size allowed is 40. The right-hand-side y-axis displays the expected increase in the testing capacity (see box, below) relative to the tick marks on the left-hand-side y-axis.

Group testing is one component for solving our world's testing problem. Still, more testing resources are needed. Group testing could also be used to estimate SARS-CoV-2 prevalence. When test accuracy is known, statistics research has shown that prevalence estimators based on group testing data have very similar variability to those obtained through testing each specimen separately.<sup>6</sup> This counterintuitive result means that a smaller number of tests can be used without loss of efficiency for the estimator itself. ■

#### Acknowledgments

This work was supported by Grant R01 AI121351 from the National Institutes of Health.

#### References

1. Dorfman R. (1943) The detection of defective members of large populations. *Annals of Mathematical Statistics*, **14**, 436–440.
2. Lewis, J., Lockary, V. and Kobic, S. (2012) Cost savings and increased efficiency using a stratified specimen pooling strategy for *Chlamydia trachomatis* and *Neisseria gonorrhoeae*. *Sexually Transmitted Diseases*, **39**, 46–48.
3. Græsbøll, K., Andresen, L., Halasa, T. and Toft, N. (2017) Opportunities and challenges when pooling milk samples using ELISA. *Preventative Veterinary Medicine*, **139**, 93–98.
4. Salzer, E., Nixon, E., Drewes, G., Reinhard, F., Bergamini, G. and Rau, C. (2016) Screening pools of compounds against multiple endogenously expressed targets in a chemoproteomics binding assay. *Journal of Laboratory Automation*, **21**, 133–142.
5. Van, T., Miller, J., Warshauer, D., Reisdorf, E., Jernigan, D., Humes, R. and Shult, P. (2012) Pooling nasopharyngeal/throat swab specimens to increase testing capacity for influenza viruses by PCR. *Journal of Clinical Microbiology*, **50**, 891–896.
6. Liu, A., Liu, C., Zhang, Z. and Albert, P. (2012) Optimality of group testing in the presence of misclassification. *Biometrika*, **99**, 245–251.
7. Finucan, H. (1964) The blood testing problem. *Applied Statistics*, **13**, 43–50.
8. Hitt, B., Bilder, C., Tebbs, J. and McMahan, C. (2020) A Shiny app for pooled testing. [chrisbilder.com/shiny](http://chrisbilder.com/shiny)

### Selecting group size

Define  $T$  as a random variable for the number of tests from a group of size  $s$ , and define  $G$  as a binary random variable indicating whether a group tests positive (1) or negative (0). The expected number of tests for a group using Dorfman testing is

$$E(T) = 1 + sP(G = 1)$$

With perfect test accuracy,  $P(G = 1) = 1 - (1 - p)^s$ , where  $p$  is the disease prevalence. The most efficient group size is the one that minimises  $E(T)/s$ , the expected number of tests per individual for the group. Finucan<sup>7</sup> showed that this minimum can be approximated by choosing the group size as the next integer larger than  $1/\sqrt{p}$ , but one can also iterate over a

range of group sizes to find the solution.<sup>8</sup> In application,  $p$  is unknown, so an estimate is substituted.

Two measures of efficiency for group testing relative to testing specimens separately are the percentage reduction in the expected number of tests,  $100(1 - E(T)/s)\%$ ; and the expected increase in the testing capacity,  $100\{1/[E(T)/s] - 1\}\%$ .