








The cardiac sympathetic co-transmitter neuropeptide Y is pro-arrhythmic following ST-elevation myocardial infarction despite beta-blockade

Manish Kalla^{1,2}, Guoliang Hao¹, Nidi Tapoulal¹, Jakub Tomek¹, Kun Liu¹, Lavinia Woodward¹, 'Oxford Acute Myocardial Infarction (OxAMI) Study', Erica Dall'Armellina ², Adrian P. Banning², Robin P. Choudhury^{2,3}, Stefan Neubauer², Rajesh K. Kharbanda², Keith M. Channon ², Olujimi A. Ajijola⁴, Kalyanam Shivkumar ⁴, David J. Paterson ¹, and Neil Herring ^{1,2*}

¹Department of Physiology, Anatomy and Genetics, Burdon Sanderson Cardiac Science Centre, University of Oxford, Parks Road, Oxford OX13PT, UK; ²Department of Cardiovascular Medicine, John Radcliffe Hospital, University of Oxford, Oxford OX3 9DU, UK; ³Radcliffe Department of Medicine, Acute Vascular Imaging Centre, University of Oxford, Oxford OX3 9DU, UK; and ⁴UCLA Cardiac Arrhythmia Center and Neurocardiology Research Center, Los Angeles, CA, USA

Received 12 June 2019; revised 29 August 2019; editorial decision 12 November 2019; accepted 12 November 2019; online publish-ahead-of-print 13 December 2019

See page 2180 for the editorial comment on this article (doi: 10.1093/eurheartj/ehz950)

Aims

ST-elevation myocardial infarction is associated with high levels of cardiac sympathetic drive and release of the co-transmitter neuropeptide Y (NPY). We hypothesized that despite beta-blockade, NPY promotes arrhythmogenesis via ventricular myocyte receptors.

Methods and results

In 78 patients treated with primary percutaneous coronary intervention, sustained ventricular tachycardia (VT) or fibrillation (VF) occurred in 6 (7.7%) within 48 h. These patients had significantly ($P < 0.05$) higher venous NPY levels despite the absence of classical risk factors including late presentation, larger infarct size, and beta-blocker usage. Receiver operating curve identified an NPY threshold of 27.3 pg/mL with a sensitivity of 0.83 and a specificity of 0.71. RT-qPCR demonstrated the presence of NPY mRNA in both human and rat stellate ganglia. In the isolated Langendorff perfused rat heart, prolonged (10 Hz, 2 min) stimulation of the stellate ganglia caused significant NPY release. Despite maximal beta-blockade with metoprolol (10 μ mol/L), optical mapping of ventricular voltage and calcium (using RH237 and Rhod2) demonstrated an increase in magnitude and shortening in duration of the calcium transient and a significant lowering of ventricular fibrillation threshold. These effects were prevented by the Y₁ receptor antagonist BIBO3304 (1 μ mol/L). Neuropeptide Y (250 nmol/L) significantly increased the incidence of VT/VF (60% vs. 10%) during experimental ST-elevation ischaemia and reperfusion compared to control, and this could also be prevented by BIBO3304.

Conclusions

The co-transmitter NPY is released during sympathetic stimulation and acts as a novel arrhythmic trigger. Drugs inhibiting the Y₁ receptor work synergistically with beta-blockade as a new anti-arrhythmic therapy.

Keywords

Neuropeptide Y • Myocardial infarction • Percutaneous coronary intervention • Ventricular tachycardia • Ventricular fibrillation

* Corresponding author. Tel: +44 1865 220256, Email: neilherring@doctors.org.uk

© The Author(s) 2019. Published by Oxford University Press on behalf of the European Society of Cardiology.

This is an Open Access article distributed under the terms of the Creative Commons Attribution License (<http://creativecommons.org/licenses/by/4.0/>), which permits unrestricted reuse, distribution, and reproduction in any medium, provided the original work is properly cited.

Introduction

Acute myocardial infarction (MI) is associated with high levels of cardiac sympathetic drive¹ which is a strong prognostic indicator for adverse outcomes and can trigger life-threatening ventricular arrhythmias.^{2,3} Despite significant improvements in mortality with emergency reperfusion and modern pharmacological treatment, large ST-elevation myocardial infarction (STEMI) is complicated by ventricular arrhythmias in up to 10% of cases.⁴ Indeed, the only primary prevention anti-arrhythmic drugs that reduce mortality following acute MI are beta-blockers.⁵ Prolonged cardiac sympathetic stimulation⁶ or experimentally induced MI⁷ in animal models also causes the release of non-catecholaminergic co-transmitters such as neuropeptide Y (NPY). We have shown that both local cardiac and circulating levels of the NPY are significantly elevated in patients undergoing primary percutaneous coronary intervention (PPCI) following STEMI⁸ and remain high over at least 48 h following the event.⁹

Interestingly, many species including rat and human, are known to express NPY receptors on cardiomyocytes,¹⁰ and NPY can influence calcium handling and electrophysiology. For example, in isolated rat ventricular myocytes, NPY increases the size of intracellular calcium transients and promotes diastolic calcium release events from the sarcoplasmic reticulum,¹¹ which are known to cause delayed afterdepolarizations via the electrogenic $\text{Na}^+/\text{Ca}^{2+}$ exchange (NCX) and trigger arrhythmic events.² In addition, patch-clamp studies of isolated ventricular myocytes have shown that NPY can increase the transient outward potassium current (I_{to}),¹² and reduce the L-type calcium current (I_{CaL}).¹³ This may shorten action potential duration, reduce refractory period, and help sustain re-entrant arrhythmias.

We therefore hypothesized that despite maximal beta-blockade, NPY released during sympathetic stimulation can promote ventricular arrhythmias in a novel Langendorff perfused rat heart preparation with intact stellate ganglia and sympathetic innervation, and explore the underlying mechanisms. We also sought to ascertain whether patients undergoing PPCI for STEMI with high plasma NPY levels were therefore more likely to experience ventricular arrhythmias. To further investigate possible causation, we tested whether NPY promotes arrhythmias during experimental ST-elevation ischaemia/reperfusion in the rat and explored the receptor pathways involved to assess whether these may be applicable for human pharmacological intervention.

Methods

See [Supplementary material online](#) for expanded methods. Patients with left coronary artery STEMI were recruited as part of the Oxford Acute Myocardial Infarction (OxAMI) study, which was approved by local ethics committee (REC: 10/H0408/24). All participants gave written informed consent. Stellate ganglia were collected from organ donors at the time of organ procurement as approved by the UCLA IRB and written informed consent was provided by the patient or appropriate designee. These studies comply with the Declaration of Helsinki. Animal use complied with the University of Oxford local ethical guidelines and was in accordance with the Guide for the Care and Use of Laboratory Animals published by the US National Institutes of Health (NIH Publication No. 85-23, revised 2011) and the Animals (Scientific Procedures) Act 1986 (UK).

Experiments were performed under British Home Office Project License PPL 30/3131.

Statistical analysis

Data are presented as mean \pm standard deviation, or as median [interquartile range] if data did not pass a normality test (Shapiro–Wilk). A paired *t*-test was used to compare grouped data with two measures, whilst a one-way analysis of variance (ANOVA) was applied to grouped data with more than two measures, with *post hoc* analysis to determine significance (Neuman–Keuls). An unpaired *t*-test assuming unequal variance was used to determine significance between independent groups. Non-parametric data from two independent groups were compared using a Mann–Whitney *U* test and for more than two groups using a Kruskal–Wallis one-way ANOVA. Discrete data were analysed using χ^2 or Fisher's exact test in contingency tables. All significance tests are two-tailed and significance accepted at $P < 0.05$.

Results

Neuropeptide Y levels and ventricular arrhythmias in ST-elevation myocardial infarction patients following primary percutaneous coronary intervention

A total of 78 patients with acute left coronary artery STEMI (presenting throughout the 24 h cycle of clinical activity) were recruited and underwent peripheral venous blood sampling at the time of PPCI. Overall patients were 63 ± 12.4 years old and 61/78 (78.2%) were male. The mean pain to balloon time was 218 ± 159 min. Peripheral venous NPY concentration was $19.0 [11.7–31.7]$ pg/mL. For comparison, the venous NPY level measured during elective coronary angiography in 12 patients of a similar age and sex, with similar cardiovascular risk factors but with unobstructed coronary arteries was $7.8 [6.5–12.2]$ pg/mL (see [Table 1](#)).

Sustained VT/VF was observed in 7.7% (6/78) of the STEMI patients. The individual characteristics of these patients in terms of pain to balloon time, arrhythmia timing, and termination are detailed in [Supplementary material online, Table S1](#). Known clinical risk factors for ischaemia reperfusion arrhythmias following STEMI include cardiogenic shock, late presentation, larger infarct size, and prior beta-blocker usage.¹⁴ No patients in cardiogenic shock were included in our study, and patients with VT/VF in our cohort had a significantly faster pain to balloon time compared to the rest of the cohort, and a similar proportion had previous MIs and prior beta-blocker use (as shown in [Table 2](#)). Ejection fraction, oedema, and late gadolinium enhancement (LGE) on cardiac magnetic resonance imaging (MRI) at 48 h were also similar. However, patients with VT/VF had significantly higher venous plasma NPY levels compared to the rest of the study group ($31.9 [27.8–47.7]$ vs. $17.8 [10.6–30.2]$ pg/mL).

The NPY levels of patients experiencing sustained VT/VF in relation to the entire NPY distribution are illustrated in [Figure 1A](#). A receiver operating characteristic curve was used to define an NPY threshold that best identifies those patients with sustained VT/VF as shown in [Figure 1B](#). A threshold NPY level of 27.3 pg/mL has a sensitivity of 0.83 and a specificity of 0.71 (area under the receiver operating characteristic curve: 0.77, 95% confidence intervals 0.65–0.90). The baseline characteristics of STEMI patients according to this

Table 1 Venous NPY concentrations and patient details according to clinical diagnosis

	Normal coronary arteries (n = 12)	STEMI (n = 78)	P-value
Age	64.7 ± 12.1	63.0 ± 12.4	0.68
Males	7/12 (58.3%)	61/78 (78.2%)	0.16
Cardiovascular risk factors			
Hypertension	9/12 (75%)	36/78 (46.2%)	0.12
Hyperlipidaemia	7/12 (58.3%)	32/78 (41.0%)	0.42
Diabetes mellitus	2/12 (16.7%)	10/78 (12.8%)	1.00
Current/Ex-smoker	7/12 (58.3%)	61/78 (78.2%)	0.16
Family history	6/12 (50.0%)	26/78 (33.3%)	0.33
Previous MI	3/12 (25%)	7/78 (9.0%)	0.13
Venous NPY concentration (pg/mL)	7.8 [6.5–12.2]	19.0 [11.7–31.7]	<0.001

Values are mean ± standard deviation, n (%), median [interquartile range].
MI, myocardial infarction; STEMI, ST-elevation myocardial infarction.

Table 2 Clinical characteristics in patients with and without sustained VT/VF following STEMI

STEMI patients	No VT/VF (n = 72)	VT/VF (n = 6)	P-value
Age	63.0 ± 12.7	63.7 ± 14.5	0.91
Males	56/72 (77.8%)	5/6 (83.3%)	1.00
Cardiovascular risk factors			
Hypertension	33/72 (45.8%)	3/6 (50.0%)	1.00
Hyperlipidaemia	5/72 (6.9%)	1/6 (16.7%)	0.39
Diabetes mellitus	10/72 (13.9%)	0/6 (0.0%)	0.59
Current/Ex-smoker	58/72 (80.6%)	3/6 (50.0%)	0.11
Family history	23/72 (31.9%)	3/6 (50.0%)	0.66
Previous MI	5/72 (6.9%)	2/6 (33.3%)	0.09
Medications on admission			
Beta-blockers	11/72 (15.3%)	1/6 (16.7%)	1.00
ACE inhibitor/ATR antagonist	17/72 (23.6%)	1/6 (16.7%)	1.00
Statin	17/72 (23.6%)	1/6 (16.7%)	1.00
BP and heart rate at presentation			
Systolic BP (mmHg)	134.6 ± 25.5	135.2 ± 22.8	0.94
Diastolic BP (mmHg)	81.2 ± 16.1	71.2 ± 19.1	0.26
Heart rate (/min)	80.8 ± 21.2	67.2 ± 17.1	0.12
Pain to balloon time (min)	225 ± 161	138 ± 51	0.01
LAD infarct	52/72 (72.2%)	6/6 (100%)	0.33
Flow-limiting bystander disease	8/72 (11.1%)	2/6 (33.3%)	0.35
Cardiac MRI			
Ejection fraction (%)	46 ± 13	39 ± 4	0.13
LGE (%)	32 ± 13	38 ± 16	0.53
Oedema (%)	44 ± 13	47 ± 18	0.78
Venous NPY concentration (pg/mL)	17.8 [10.6–30.2]	31.9 [27.8–47.7]	0.03

Values are mean ± standard deviation, n (%), median [interquartile range].

ACE, angiotensin converting enzyme; ATR, angiotensin receptor; BP, blood pressure; LAD, left anterior descending; LGE, late gadolinium enhancement; MI, myocardial infarction; MRI, magnetic resonance imaging; STEMI, ST-elevation myocardial infarction.

threshold level are summarized in Table 3. Patients with high venous NPY levels were on average slightly older and a higher proportion were hypertensive. Usage of beta-blockers, angiotensin converting enzyme (ACE) inhibitors, and statins prior to presentation were

similar in the two groups and both groups had similar pain to balloon times, left anterior descending artery infarctions, flow-limiting bystander disease, and haemodynamic parameters. There was no association between beta-blocker dose on admission (equivalent

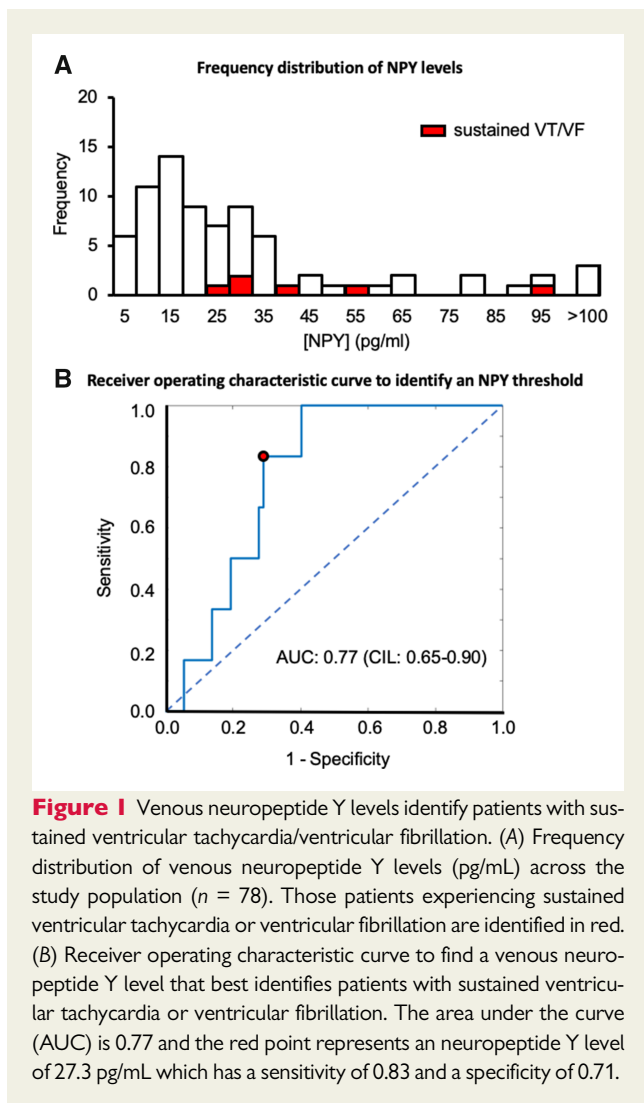


Figure 1 Venous neuropeptide Y levels identify patients with sustained ventricular tachycardia/ventricular fibrillation. (A) Frequency distribution of venous neuropeptide Y levels (pg/mL) across the study population ($n = 78$). Those patients experiencing sustained ventricular tachycardia or ventricular fibrillation are identified in red. (B) Receiver operating characteristic curve to find a venous neuropeptide Y level that best identifies patients with sustained ventricular tachycardia or ventricular fibrillation. The area under the curve (AUC) is 0.77 and the red point represents an neuropeptide Y level of 27.3 pg/mL which has a sensitivity of 0.83 and a specificity of 0.71.

bisoprolol dose) and NPY levels ($r = 0.06$, $P = 0.59$). There were no significant differences in ejection fraction or infarct size as assessed by LGE between patients with low and high venous NPY levels above as shown in Table 3. The occurrence of all ventricular arrhythmias according to NPY levels are summarized in Table 4. Patients with high venous NPY levels had similar coupling intervals of ventricular ectopics compared to those with low NPY levels (474 ± 59 vs. 507 ± 33 ms, $P = 0.24$).

Neuropeptide Y release and effects of ventricular electrophysiology and calcium handling

Using quantitative reverse transcription polymerase chain reaction (RT-qPCR) NPY mRNA was identified in human ($n = 4$) and rat ($n = 4$) stellate ganglia tissue (Figure 2A). Prolonged (2 min) high frequency (10 Hz) stimulation of either left or right stellate ganglia in the integrated sympathetic nerve rat heart model resulted in the release of NPY in the coronary perfusate (Figure 2B), although release of NPY was greater with left stellate stimulation ($n = 6$) compared to

right ($n = 6$). Stimulation of either stellate ganglia also resulted in a frequency-dependent increase in heart rate and left ventricular developed pressure, greater with left ($n = 5$) compared to right ($n = 7$) stellate stimulation, which could be abolished with the beta-blocker metoprolol ($10 \mu\text{mol/L}$, Figure 2C and D) even during prolonged (2 min) high frequency (10 Hz) stimulation (right stellate: 261 ± 16 b.p.m. to 269 ± 16 b.p.m., 51 ± 8 mmHg to 56 ± 11 mmHg, left stellate: 252 ± 25 b.p.m. to 257 ± 25 b.p.m., 65 ± 16 mmHg to 71 ± 18 mmHg).

Optical mapping of voltage and intracellular calcium transients (using RH237 and Rhod2) at the anterior ventricular wall demonstrated that independent of heart rate (pacing at a cycle length of 140 ms), prolonged high-frequency stellate stimulation in the presence of metoprolol did not significantly change action potential duration (APD, $83 \pm 21\%$ $n = 5$) or activation time as shown in Figure 3A–C. However, there was a significant increase in the amplitude of the intracellular calcium transient accompanied by a significant shortening of the calcium transient duration as demonstrated in Figure 3D and E. The increase in calcium transient amplitude and shortening of the calcium transient duration could be prevented by a NPY Y_1 receptor antagonist BIBO3304 ($1 \mu\text{mol/L}$, $n = 5$, Figure 3F and G).

Neuropeptide Y and ventricular fibrillation threshold in the isolated heart

To determine whether the increase in the magnitude and shortening in duration of the calcium transient predisposed the heart to ventricular arrhythmias, we measured ventricular fibrillation threshold (VFT) in response to burst pacing before and after prolonged high-frequency stellate ganglia stimulation in the presence of metoprolol. Right ($n = 6$) or left ($n = 7$) stellate stimulation in the presence of beta-blockade remained pro-arrhythmic with a significant reduction in VFT (Figure 4A and B) and this could be prevented by the addition of the Y_1 receptor antagonist BIBO3304 ($1 \mu\text{mol/L}$, right $n = 7$, left $n = 8$) in combination with metoprolol (Figure 4C and D). This suggests that the pro-arrhythmic effect seen following prolonged high-frequency stellate ganglia stimulation in the presence of beta-blockade was due to NPY.

To further validate effective blockade of adrenergic receptor signalling, we demonstrated that metoprolol abolished the inotropic (control 70 ± 6 mmHg, norepinephrine 121 ± 18 mmHg, metoprolol and norepinephrine 63 ± 16 mmHg) and chronotropic response (control 247 ± 18 b.p.m., norepinephrine 296 ± 5 b.p.m., metoprolol and norepinephrine 246 ± 18 b.p.m.) to a maximal dose of norepinephrine ($1 \mu\text{mol/L}$) and also reversed a fall in VFT ($n = 4$) as shown in Figure 5A. Furthermore, metoprolol alone did not have a direct effect on VFT compared to control ($n = 7$) (Figure 5B). We also demonstrated that combined beta and alpha-receptor blockade (with propranolol, $1 \mu\text{mol/L}$, and phentolamine, $1 \mu\text{mol/L}$) also did not prevent the reduction in VFT to prolonged high-frequency stellate ganglia stimulation ($n = 7$) as shown in Figure 5C.

Neuropeptide Y and experimental induced ST-elevation ischaemia reperfusion arrhythmias

To directly assess whether NPY triggers ventricular arrhythmia, we assessed the incidence and severity of arrhythmia in the rat in the

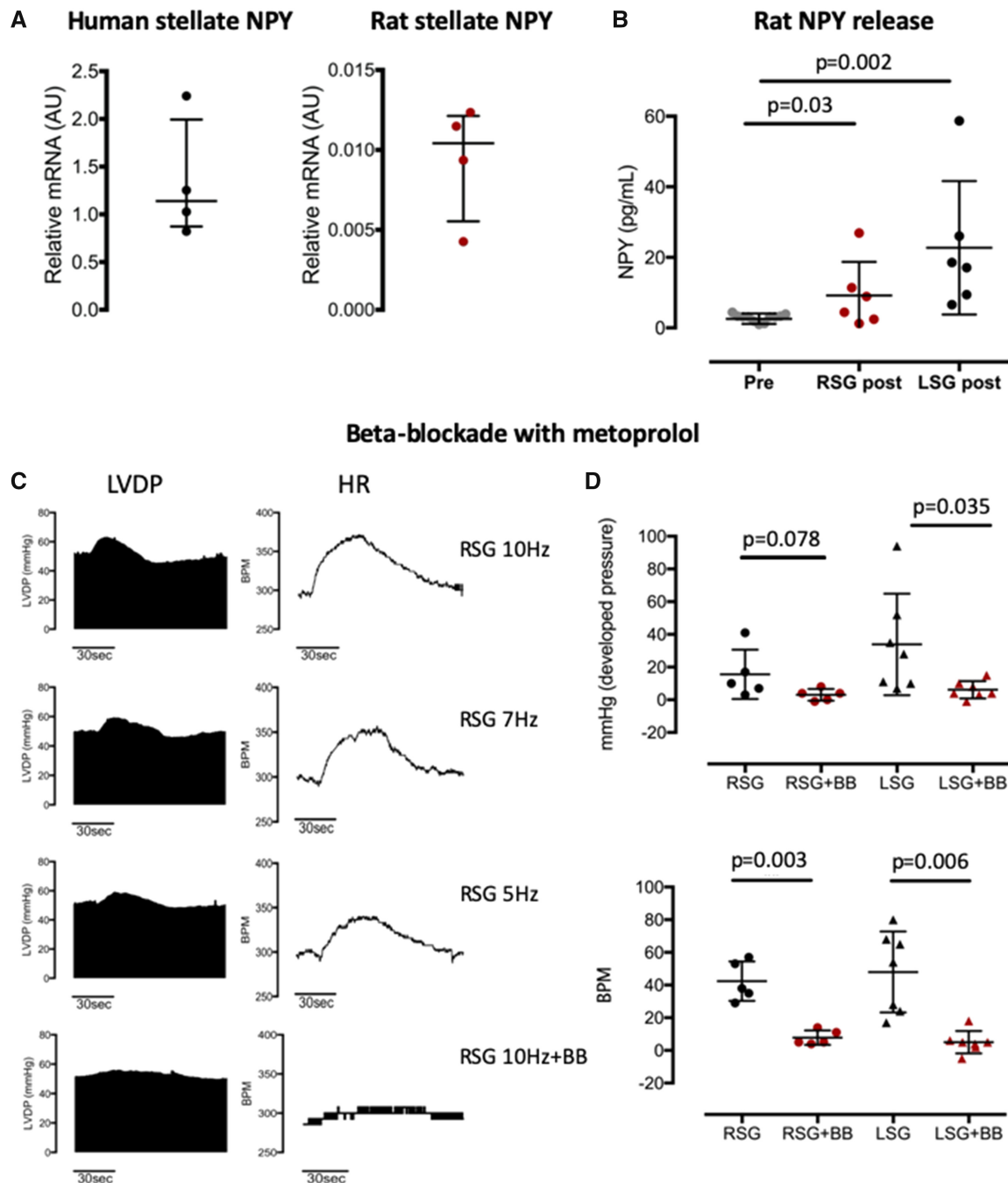


Figure 2 Stellate ganglia neuropeptide Y release and beta-blockade during sympathetic stimulation. (A) Neuropeptide Y mRNA is present in both human ($n = 4$) and rat ($n = 4$) stellate ganglia as identified using RT-qPCR. (B) Prolonged high frequency stimulation (10 Hz, 2 min) of right stellate ganglia ($n = 6$) or left stellate ganglia ($n = 6$) causes the release of neuropeptide Y into the perfusate of the isolated Langendorff perfused rat heart. (C) Example raw data trace showing the frequency-dependent increase in heart rate in beats per minute and left ventricular developed pressure (mmHg) in response to stellate stimulation in the isolated rat heart. (D) Beta-blockade with metoprolol (10 $\mu\text{mol/L}$) prevents the inotropic and chronotropic responses to either right stellate ganglia ($n = 5$) or left stellate ganglia ($n = 7$) stimulation at 10 Hz.

setting of ST-elevation ischaemia reperfusion. NPY ($n = 10$) significantly increased the incidence of sustained VT and VF (60% vs. 10%) compared to control ($n = 10$) and this could be abolished with the Y_1 receptor antagonists BIBO3304 ($n = 10$) as shown in Table 5.

Discussion

We report a novel mechanism by which sympathetic stimulation exerts a pro-arrhythmic effect on the ventricle. In the isolated heart,

Table 3 Clinical characteristics according to venous NPY threshold

STEMI patients	Low NPY (n = 52)	High NPY (n = 26)	P-value
Age	60.6 ± 12.7	67.9 ± 10.4	0.01
Males	42/52 (80.8%)	19/26 (73.1%)	0.62
Cardiovascular risk factors			
Hypertension	19/52 (36.5%)	17/26 (66.4%)	0.03
Hyperlipidaemia	17/52 (32.7%)	15/26 (57.7%)	0.06
Diabetes mellitus	5/52 (9.6%)	5/26 (19.2%)	0.29
Current/Ex-smoker	42/52 (80.8%)	19/26 (73.1%)	0.62
Family history	16/52 (30.8%)	10/26 (38.5%)	0.67
Previous MI	3/52 (5.8%)	4/26 (15.4%)	0.21
Medications on admission			
Beta-blockers	7/52 (13.5%)	5/26 (19.2%)	0.74
ACE inhibitor/ATR antagonist	9/52 (17.3%)	9/26 (34.6%)	0.15
Statin	10/52 (19.2%)	8/26 (30.8%)	0.39
BP and heart rate at presentation			
Systolic BP (mmHg)	133.8 ± 24.5	135.8 ± 27.2	0.75
Diastolic BP (mmHg)	82.1 ± 15.7	77.2 ± 18.6	0.25
Heart rate (/min)	80.4 ± 20.9	78.4 ± 22.0	0.71
Pain to balloon time (min)	233 ± 162	189 ± 129	0.21
LAD infarct	37/52 (71.2%)	21/26 (80.8%)	0.52
Flow-limiting bystander disease	5/52 (9.6%)	5/26 (19.2%)	0.40
Cardiac MRI			
Ejection fraction (%)	47 ± 9	43 ± 10	0.14
LGE (%)	32 ± 14	32 ± 19	0.95
Oedema (%)	44 ± 16	45 ± 15	0.83
Venous NPY concentration (pg/mL)	13.9 [9.2–18.8]	45.2 [31.7–78.9]	<0.0001

Values are mean ± standard deviation, n (%), median [interquartile range].

ACE, angiotensin converting enzyme; ATR, angiotensin receptor; BP, blood pressure; LAD, left anterior descending; LGE, late gadolinium enhancement; MI, myocardial infarction; MRI, magnetic resonance imaging; STEMI, ST-elevation myocardial infarction.

Table 4 Ventricular arrhythmias according to venous NPY threshold

Arrhythmia	STEMI arrhythmia frequency	
	Low NPY	High NPY
None	35/52 (67.3%)	12/26 (46.2%)
VEs	11/52 (21.2%)	8/26 (30.8%)
NSVT	5/52 (9.6%)	1/26 (3.8%)
VT	1/52 (1.9%)	3/26 (11.5%)
VF	0	2/26 (7.7%)

NSVT, non-sustained ventricular tachycardia; STEMI, ST-elevation myocardial infarction; VEs, ventricular ectopic beats; VF, ventricular fibrillation; VT, sustained ventricular tachycardia.

P = 0.01 for VT/VF between experimental groups.

prolonged high frequency stimulation of the stellate ganglia releases NPY which acts via the Y_1 receptor to increase the amplitude and shorten the duration of the ventricular myocyte calcium transient and lower ventricular fibrillation threshold, even in the presence of

maximal beta-blockade (see *Take home figure*). Importantly, combining beta-blockade with a Y_1 receptor antagonist abolishes the pro-arrhythmic effect of stellate ganglia stimulation. In patients presenting with STEMI treated with PPCI, NPY levels are associated with an increased incidence of ventricular arrhythmia in the immediate post-infarct period independent of classical risk factors such as late presentation, larger infarct size, and prior beta-blocker usage. Moreover, NPY also increases the incidence of ventricular arrhythmias during experimental ST-elevation ischaemia reperfusion and this can also be prevented by a Y_1 receptor antagonist.

Neuropeptide Y has a variety of effects on the cardiovascular system including acutely causing vasoconstriction,⁸ reducing acetylcholine release from the cardiac vagus and subsequent bradycardia,¹⁵ as well as promoting ventricular and vascular remodelling in the long term. It may also be involved in the pathogenesis of atherosclerosis.¹⁰ Here, we assess the acute effects of NPY release on ventricular electrophysiology, calcium handling, and arrhythmogenesis at the whole organ level and mitigate the effects of vasoconstriction by utilizing a constant flow system ensuring stable delivery of oxygen and metabolic substrate. Our isolated innervated heart preparation represents a useful model for the study of sympathetic control of arrhythmia.

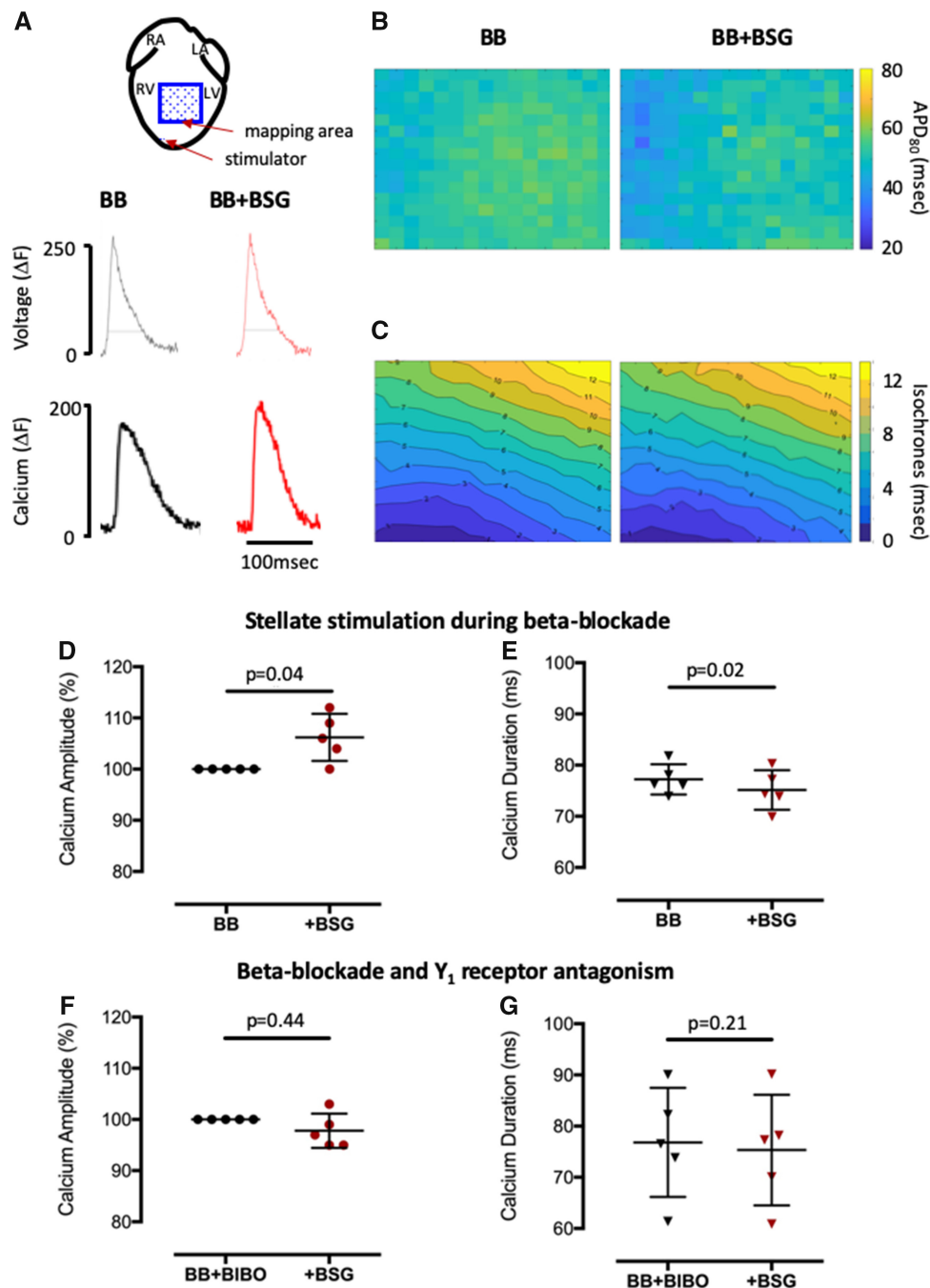
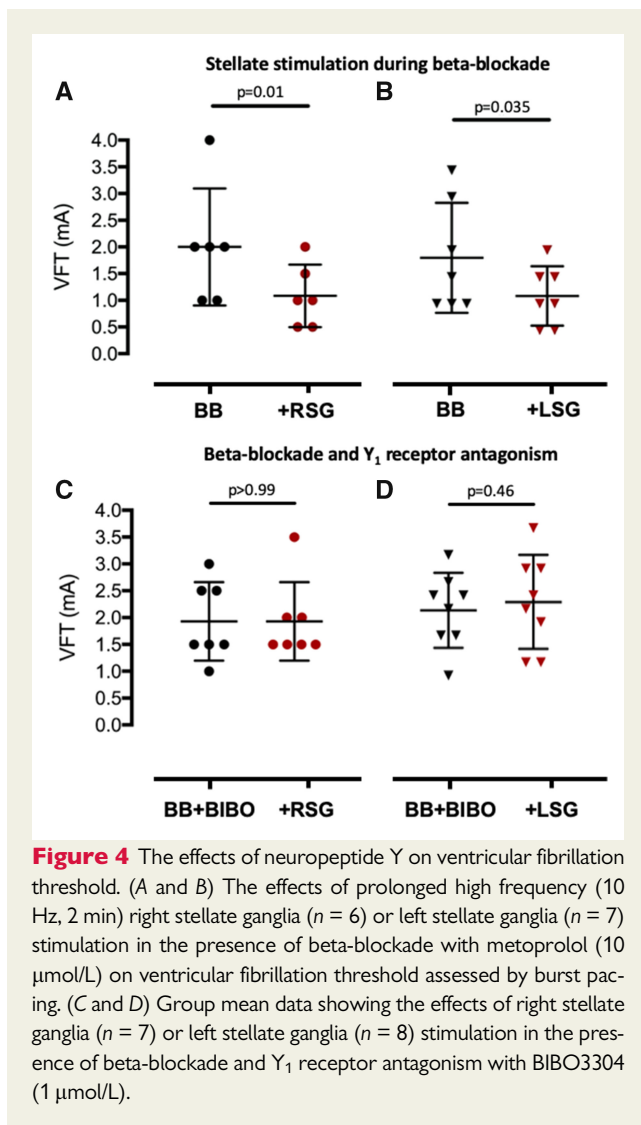


Figure 3 The effects of neuropeptide Y on ventricular calcium handling and voltage. (A) Schematic diagram showing the area of optical mapping and raw data trace showing the effects of prolonged high frequency (10 Hz, 2 min) bilateral stellate ganglia stimulation on both calcium and voltage. (B and C) Group mean data showing the effects of bilateral stellate ganglia in the presence of beta-blockade ($n = 5$) and (D and E), in the presence of beta-blockade and Y₁ receptor antagonism with BIBO3304 (1 $\mu\text{mol/L}$, $n = 5$).

Other isolated heart models to date have employed spinal cord stimulation to produce efferent post-ganglionic sympathetic nerve stimulation although retrograde stimulation of afferent fibres, or activation of local reflexes may confound observations. Using our model, we clearly demonstrate that stimulation of the stellate ganglia leads to NPY release during prolonged high frequency stimulation and that

whilst metoprolol was able to block the physiological effects of endogenous released and exogenous norepinephrine on heart rate and left ventricular developed pressure, it was unable to prevent an increase in the amplitude and shortening of duration of the intracellular calcium transient and reduction in VFT. This is suggestive of an additional substance being released during sympathetic stimulation that



may have a pro-arrhythmic effect. Exogenous NPY can also act as an independent arrhythmic trigger during ST-elevation ischaemia reperfusion and, consistent with these observations, a combination of metoprolol and Y_1 receptor blockade prevents the changes in intracellular calcium handling and decrease in VFT during stellate ganglia stimulation, or the triggered arrhythmias during ST-elevation ischaemia/reperfusion.

Although no animal model has identical electrophysiology and expresses the same combination of co-transmitters compared to human, the rat remains the best-studied model of NPY action at the single ventricular myocyte level in terms of electrophysiology and calcium handling, and NPY is the dominant sympathetic co-transmitter,¹⁶ rather than galanin as seen in the mouse¹⁷ and guinea pig.⁶ Our data confirm NPY mRNA in both human and rat stellate ganglia which have also been demonstrated by immunohistochemistry in the former.¹⁸ Consistent with our findings in the whole heart, studies on isolated ventricular myocytes in the rat have demonstrated that NPY increases the magnitude of the intracellular calcium transient and causes diastolic calcium release events potentially due to coupling of

NPY receptors to a phospholipase C, IP_3 dependent pathway.¹¹ Existing data on ion channel effects of NPY in isolated cardiomyocytes are variable. No alteration in sodium current (I_{Na}) or delayed rectifier potassium current (I_{K}) activity have been demonstrated¹⁹ but I_{to} was reduced.¹² The effects on I_{CaL} have been shown to be species dependent with inhibition in guinea pig¹³ and stimulation in rat cardiac myocytes.²⁰ However, we observe no overall effect of NPY on APD or activation times at fixed rate pacing in our model.

The pathophysiology of ventricular arrhythmias following ischaemia and reperfusion is complex. Ischaemia causes a reduction in cellular adenosine triphosphate (ATP), raises extracellular potassium through opening of ATP sensitive potassium channels, reduces inward rectifier potassium current (I_{K1}) and the activity of the Na^+/K^+ ATPase. It also causes localized acidosis, uncoupling of gap junctions, and the generation of reactive oxygen species.²¹ There is an overall shortening of APD and refractory period as well as reduction in conduction velocity which predisposes to re-entrant arrhythmias. On reperfusion, acid extrusion via Na^+/H^+ exchange leads to a rise in intracellular Na^+ and subsequently Ca^{2+} via NCX.²² Phosphorylation of calcium handling proteins by calcium-calmodulin dependent protein kinase II (CaMKII),²³ and cellular calcium overload can lead to spontaneous sarcoplasmic reticulum calcium release, delayed afterdepolarization and initiate arrhythmias, whilst the spatial heterogeneity in repolarization, together with oedema and scar formation can also facilitate re-entry.^{14,21,23} All of these processes are exacerbated by sympathetic stimulation via the beta-adrenergic receptor, but even in the presence of beta-blockade, facilitation of sarcoplasmic reticulum calcium release by NPY signalling would be a potent pro-arrhythmic trigger.

The role of NPY as a non-adrenergic, sympathetic neuron derived pro-arrhythmic cotransmitter is supported by our observations in the OxAMI cohort of patients undergoing PPCI for STEMI. Direct stimulation of the cardiac sympathetic innervation leads to the appearance of NPY in coronary sinus (CS) blood,²⁴ and we have shown that during STEMI CS and peripheral venous NPY levels are strongly correlated.⁸ Neuropeptide Y also has a long plasma half-life, and we have previously demonstrated that despite revascularization peripheral venous NPY levels remain significantly elevated for at least 48 h after treatment.⁹ In the OxAMI cohort, we therefore measured peripheral venous NPY levels immediately following PPCI and recorded ventricular arrhythmias during the first 48 h after reperfusion when 90% are known to occur. However, despite the lack of classical risk factors for ischaemia-reperfusion ventricular arrhythmias such as cardiogenic shock, late-presentation, larger infarct size, prior beta-blocker use, or longer pain to balloon time, patients with sustained VT/VF had significantly higher NPY levels. Interestingly, patients with high levels of NPY as defined by the receiver operating characteristic curve were more likely to be hypertensive, and recent data have also implicated NPY in the pathogenesis of hypertension.²⁵

Historical studies undertaken in the 1980s before the advent of PPCI and modern medical treatment have shown that venous 'NPY-like activity' is elevated during ischaemic events and left ventricular failure and correlates with 1-year mortality.^{26,27} Unlike these early studies our assay is highly sensitive (2–3 pg/mL compared to >90 pg/mL) and selective (0% cross-reactivity with structurally similar peptides such as PYY, PP, GIP, ghrelin, proinsulin, or glucagon). We observe peripheral venous levels of NPY around three times that of

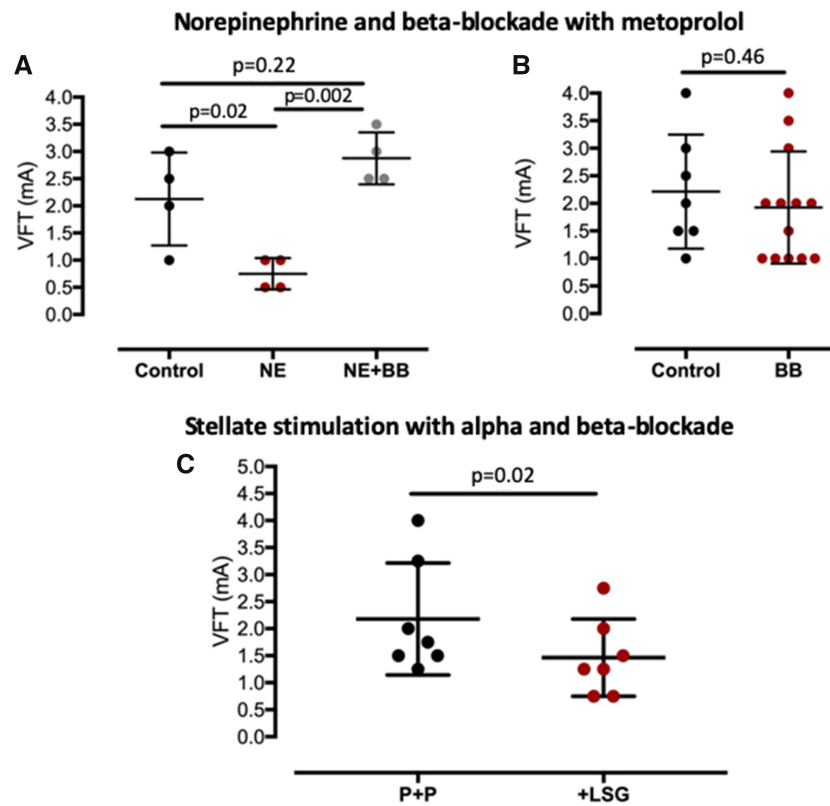
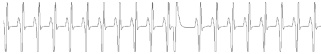





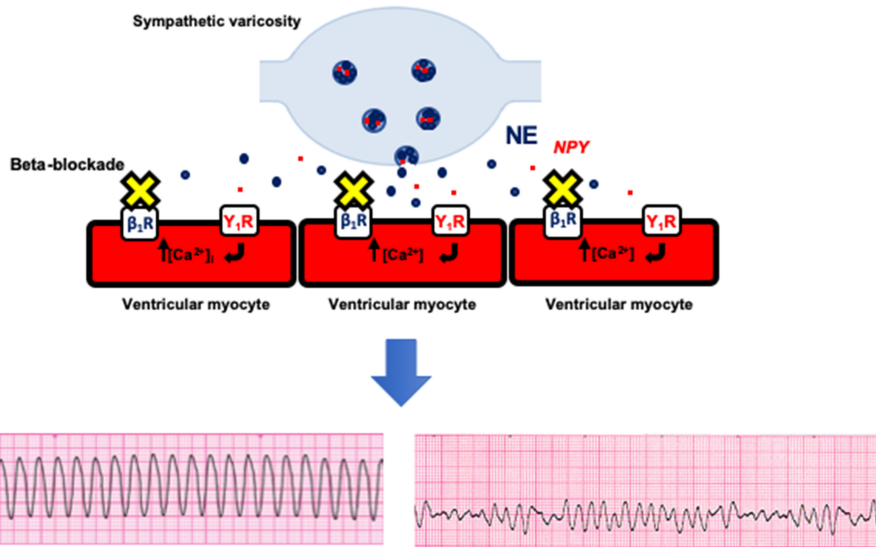
Figure 5 Effective adrenergic receptor blockade. (A) Beta-blockade with metoprolol (10 μmol/L) reverses the fall in ventricular fibrillation threshold in response to a maximal dose of norepinephrine (1 μmol/L, n = 4). (B) Beta-blockade does not influence ventricular fibrillation threshold compared to control (n = 7). (C) Combined beta and alpha-blockade (with propranolol, 1 μmol/L, and phentolamine, 1 μmol/L, P+P) does not prevent the fall in ventricular fibrillation threshold in response to prolonged high frequency (10 Hz, 2 min) left stellate ganglia stimulation (n = 7).

Table 5 NPY and ventricular reperfusion arrhythmias following experimental ST-elevation ischaemia

ECG example	Arrhythmia	Reperfusion arrhythmia frequency		
		Control	NPY	NPY+BIBO
	None	8/10	1/10	1/10
	VEs	1/10	3/10	9/10
	VT	1/10	1/10	0
	VF	0	5/10	0

P = 0.006 for VT/VF between experimental groups. ECG, electrocardiogram.

Neuropeptide Y and arrhythmia post STEMI



Take home figure The sympathetic co-transmitter neuropeptide Y is released during ST-elevation myocardial infarction and via the Y₁ receptor causes ventricular myocyte calcium overload and triggers life-threatening ventricular tachycardia and fibrillation.

patients undergoing elective coronary angiography with normal coronary arteries (7.8 pg/mL). Others have measured similarly low levels of venous NPY in healthy adults around 2 pg/mL.²⁸ Using the same assay, we have also recently shown in patients with severe heart failure undergoing implantation of cardiac resynchronization therapy devices, that coronary sinus levels of NPY are significantly higher than in the STEMI population and are strongly associated with mortality.²⁹

Limitations

Ventricular arrhythmias causing out of hospital cardiac arrests have very low survival to discharge rates that are dependent on bystander recognition, adequate cardiopulmonary resuscitation, and early defibrillation.³⁰ Such arrhythmias are clinically more serious than those witnessed peri-PPCI, although all sustained ventricular arrhythmias are potentially life-threatening. Sustained VT and VF occurring immediately pre- and post-PPCI are associated with higher rates of early and in-hospital mortality.³⁰ It is challenging to thoroughly phenotype patients with out of hospital cardiac arrests prior to the arrest itself. These patients are often intubated prior to PPCI and therefore unable to consent, and frequently suffer from cardiogenic shock (an exclusion criteria in our study). Measuring NPY after such events is also complicated by the fact that the arrest itself will significantly raise sympathetic drive and NPY levels making it difficult to ascertain whether NPY played any role in their initiation. It would have been interesting to see whether the release profile of NPY throughout the 48 h of monitoring provides any additional prognostic information regarding late ventricular arrhythmia occurrence, but given that 90%

of ventricular arrhythmias occur within the first 48 h,³⁰ a far larger study would be required to address this question. We also do not have 12-lead electrocardiograms (ECGs) of all the observed arrhythmias in order to localize an electrocardiographic origin, as arrhythmias were mostly captured by standard ECG Holter monitoring and/or the rhythm strips from a defibrillator.

Whilst constant frequency stimulation is used universally for experimental neural stimulation, this clearly does not reproduce spontaneous neuronal firing behaviour observed *in vivo*. However, our stimulation parameters produce physiological changes in heart rate and left ventricular developed pressure and increased NPY levels as observed in the STEMI population. Inducing ventricular arrhythmias through pacing protocols could also be considered unphysiological, and the same criticism can also be applied to clinical VT stimulation testing (e.g. using the Wellens protocol). Ventricular fibrillation threshold testing in animal models allows for paired measurements of susceptibility before and after complex multi-step experimental interventions and therefore remains useful. However, we were careful to also demonstrate the effects of NPY on reperfusion arrhythmias induced by experimental ST-elevation ischaemia reperfusion in the rat as proof of principle that our findings are applicable to arrhythmogenesis following PPCI for STEMI.

Clinical implications

Despite over half a century of research, the only primary prevention anti-arrhythmic drugs that reduce mortality following acute MI are beta-blockers. There is therefore an urgent need to identify new therapeutic targets and our data support the notion that blockers of

the Y_1 receptor may offer a novel pharmacological strategy in patients with ventricular arrhythmias, working synergistically with beta-blockers, and other secondary prevention medications. There is the possibility of administering such drugs via an intracoronary route at the time of PPCI, given their potential to also improve microvascular resistance and reduce infarct size,⁸ and/or via infusions during the first 48 h when NPY levels are at their highest,⁹ although the best approach is yet to be established.

It is also interesting to note that a variety of interventions aimed at reducing cardiac sympathetic drives such as cardiac sympathetic denervation, thoracic epidural anaesthesia, and renal denervation^{2,3} have shown promise in treating recurrent VT in patients with severe heart failure and long-QT syndrome, despite being treated with maximal doses of beta-blockers and receiving recurrent implantable cardioverter-defibrillator therapies. It may be that their efficacy is partly due to reducing the pro-arrhythmic action of NPY release in addition to simply reducing the release of catecholamines.

Supplementary material

Supplementary material is available at *European Heart Journal* online.

Acknowledgements

This study would not have been possible without the tireless support of the coronary care unit and catheter laboratory staff of the Oxford Heart Centre at the John Radcliffe Hospital. The contributions of colleagues in the Oxford Acute Vascular Imaging Centre are also acknowledged. We are also very grateful to the patients who participated.

Funding

British Heart Foundation Intermediate Fellowship (FS/15/8/3115) and an Oxford Health Services Research grant (OHSRC: 1135) to N.H.; a BHF Clinical Research Fellowship to M.K.; National Institutes of Health (HL125730 and DP2HL142045 to O.A.A., HL084261 and OT2OD023848 to K.S.). N.H., M.K., K.C., and D.J.P. also acknowledge support from the BHF Centre of Research Excellence (RE/08/004), Oxford, and the Oxford National Institute for Health Research (NIHR) Biomedical Research Centre.

Conflict of interest: none declared.

References

- Malliani A, Schwartz PJ, Zanchetti A. A sympathetic reflex elicited by experimental coronary occlusion. *Am J Physiol* 1969;**217**:703–709.
- Herring N, Kalla M, Paterson DJ. The autonomic nervous system and cardiac arrhythmias: current concepts and emerging therapies. *Nat Rev Cardiol* 2019;**16**:760.
- Schwartz PJ. Cardiac sympathetic denervation to prevent life-threatening arrhythmias. *Nat Rev Cardiol* 2014;**11**:346–353.
- Ibanez B, James S, Agewall S, Antunes MJ, Bucciarelli-Ducci C, Bueno H, Caforio ALP, Crea F, Goudevanos JA, Halvorsen S, Hindricks G, Kastrati A, Lenzen MJ, Prescott E, Roffi M, Valgimigli M, Varenhorst C, Vranckx P, Widimsky P; ESC Scientific Document Group. 2017 ESC Guidelines for the management of acute myocardial infarction in patients presenting with ST-segment elevation: the Task Force for the management of acute myocardial infarction in patients presenting with ST-segment elevation of the European Society of Cardiology (ESC). *Eur Heart J* 2018;**39**:119–177.
- Randomised trial of intravenous atenolol among 16 027 cases of suspected acute myocardial infarction: ISIS-1. First International Study of Infarct Survival Collaborative Group. *Lancet* 1986;**2**:57–66.
- Herring N, Cranley J, Lokale MN, Li D, Shanks J, Alston EN, Girard BM, Carter E, Parsons RL, Habecker BA, Paterson DJ. The cardiac sympathetic co-transmitter galanin reduces acetylcholine release and vagal bradycardia: implications for neural control of cardiac excitability. *J Mol Cell Cardiol* 2012;**52**:667–676.
- Han C, Wang XA, Fiscus RR, Gu J, McDonald JK. Changes in cardiac neuropeptide Y after experimental myocardial infarction in rat. *Neurosci Lett* 1989;**104**:141–146.
- Herring N, Tapoual N, Kalla M, Ye X, Borysova L, Lee R, Dall'Armellina E, Stanley C, Ascione R, Lu C-J, Banning AP, Choudhury RP, Neubauer S, Dora K, Kharbanda RK, Channon KM, Banning AP, Choudhury RP, Neubauer S, Dora K, Kharbanda RK, Channon KM. Neuropeptide-Y causes coronary microvascular constriction and is associated with reduced ejection fraction following ST-elevation myocardial infarction. *Eur Heart J* 2019;**40**:1920–1929.
- Cuculi F, Herring N, De Caterina AR, Banning AP, Prendergast BD, Forfar JC, Choudhury RP, Channon KM, Kharbanda RK. Relationship of plasma neuropeptide Y with angiographic, electrocardiographic and coronary physiology indices of reperfusion during ST elevation myocardial infarction. *Heart* 2013;**99**:1198–1203.
- Tan CMJ, Green P, Tapoual N, Lewandowski AJ, Leeson P, Herring N. The role of neuropeptide Y in cardiovascular health and disease. *Front Physiol* 2018;**9**:1281.
- Heredia M, Delgado C, Pereira L, Perrier R, Richard S, Vassort G, Benitah J, Gomez A. Neuropeptide Y rapidly enhances $[Ca^{2+}]_i$ transients and Ca^{2+} sparks in adult rat ventricular myocytes through Y_1 receptor and PLC activation. *J Mol Cell Cardiol* 2005;**38**:205–212.
- Heredia MP, Fernandez-Velasco M, Benito G, Delgado C. Neuropeptide Y increases 4-aminopyridine-sensitive transient outward potassium current in rat ventricular myocytes. *Br J Pharmacol* 2002;**135**:1701–1706.
- Bryant SM, Hart G. Effects of neuropeptide Y on L-type calcium current in guinea-pig ventricular myocytes. *Br J Pharmacol* 1996;**118**:1455–1460.
- Gorenk B, Blomström Lundqvist C, Brugada Terradellas J, Camm AJ, Hindricks G, Huber K, Kirchhof P, Kuck K-H, Kudaiberdieva G, Lin T, Raviele A, Santini M, Titz RR, Valgimigli M, Vos MA, Vrints C, Zeymer U, Kristiansen SB, Lip GYH, Potpara T, Fauchier L, Sticherling C, Roffi M, Widimsky P, Mehilli J, Lettino M, Schiele F, Sinnaeve P, Boriani G, Lane D, Savelieva I. Cardiac arrhythmias in acute coronary syndromes: position paper from the joint EHRA, ACCA, and EAPCI task force. *Europace* 2014;**16**:1655–1673.
- Herring N, Lokale MN, Danson EJ, Heaton DA, Paterson DJ. Neuropeptide Y reduces acetylcholine release and vagal bradycardia via a Y_2 receptor-mediated, protein kinase C-dependent pathway. *J Mol Cell Cardiol* 2008;**44**:477–485.
- Smith-White MA, Wallace D, Potter EK. Sympathetic-parasympathetic interactions at the heart in the anaesthetised rat. *J Auton Nerv Syst* 1999;**75**:171–175.
- Potter EK, Smith-White MA. Galanin modulates cholinergic neurotransmission in the heart. *Neuropeptides* 2005; **39**:345–348.
- Ajjjola OA, Yagishita D, Reddy NK, Yamakawa K, Vaseghi M, Downs AM, Hoover DB, Ardell JL, Shivkumar K. Remodeling of stellate ganglion neurons after spatially targeted myocardial infarction: neuropeptide and morphologic changes. *Heart Rhythm* 2015;**12**:1027–1035.
- Zhao HC, Liu ZB, Feng QL, Cui XL, Zhang CM, Wu BW. [Effects of neuropeptide Y on ion channels in ventricular myocytes]. *Sheng Li Xue Bao* 2006;**58**:225–231.
- Millar BC, Weis T, Piper HM, Weber M, Borchard U, McDermott BJ, Balasubramaniam A. Positive and negative contractile effects of neuropeptide Y on ventricular cardiomyocytes. *Am J Physiol* 1991;**261**(6 Pt 2):H1727–H1733.
- Carmeliet E. Cardiac ionic currents and acute ischemia: from channels to arrhythmias. *Physiol Rev* 1999;**79**:917–1017.
- Pogwizd SM, Schlotthauer K, Li L, Yuan W, Bers DM. Arrhythmogenesis and contractile dysfunction in heart failure: roles of sodium-calcium exchange, inward rectifier potassium current, and residual beta-adrenergic responsiveness. *Circ Res* 2001;**88**:1159–1167.
- Bell JR, Erickson JR, Delbridge LM. $Ca(2+)$ /calmodulin dependent kinase II: a critical mediator in determining reperfusion outcomes in the heart? *Clin Exp Pharmacol Physiol* 2014;**41**:940–946.
- Warner MR, Senanayake PD, Ferrario CM, Levy MN. Sympathetic stimulation-evoked overflow of norepinephrine and neuropeptide Y from the heart. *Circ Res* 1991;**69**:455–465.
- Shanks J, Manou-Stathopoulou S, Lu CJ, Li D, Paterson DJ, Herring N. Cardiac sympathetic dysfunction in the prehypertensive spontaneously hypertensive rat. *Am J Physiol Heart Circ Physiol* 2013;**305**:H980–H986.
- Ullman B, Hulting J, Lundberg JM. Prognostic value of plasma neuropeptide-Y in coronary care unit patients with and without acute myocardial infarction. *Eur Heart J* 1994;**15**:454–461.
- Hulting J, Sollevi A, Ullman B, Franco-Cereceda A, Lundberg JM. Plasma neuropeptide Y on admission to a coronary care unit: raised levels in patients with left heart failure. *Cardiovasc Res* 1990;**24**:102–108.

28. Grouzmann E, Comoy E, Bohuon C. Plasma neuropeptide Y concentrations in patients with neuroendocrine tumors. *J Clin Endocrinol Metab* 1989;**68**:808–813.
29. Ajijola OA, Gonzales MJ, Gornbein J, Liu K, Li D, Paterson DJ, Shivkumar K, Singh JP, Herring N. Coronary sinus neuropeptide-Y levels predict adverse outcomes in patients with stable chronic heart failure. *JAMA Cardiol* 2019;doi: 10.1001/jamacardio.2019.4717.
30. Kalarus Z, Svendsen JH, Capodanno D, Dan GA, De Maria E, Gorenek B, Jedrzejczyk-Patej E, Mazurek M, Podolecki T, Sticherling C, Tfelt-Hansen J, Traykov V, Lip GYH, Fauchier L, Boriani G, Mansourati J, Blomstrom-Lundqvist C, Mairesse GH, Rubboli A, Deneke T, Dagnes N, Steen T, Ahrens I, Kunadian V, Berti S. Cardiac arrhythmias in the emergency settings of acute coronary syndrome and revascularization: an European Heart Rhythm Association (EHRA) consensus document, endorsed by the European Association of Percutaneous Cardiovascular Interventions (EAPCI), and European Acute Cardiovascular Care Association (ACCA). *Europace* 2019;**21**: 1603–1604.

CARDIOVASCULAR FLASHLIGHT

doi:10.1093/eurheartj/ehz883

Online publish-ahead-of-print 17 December 2019

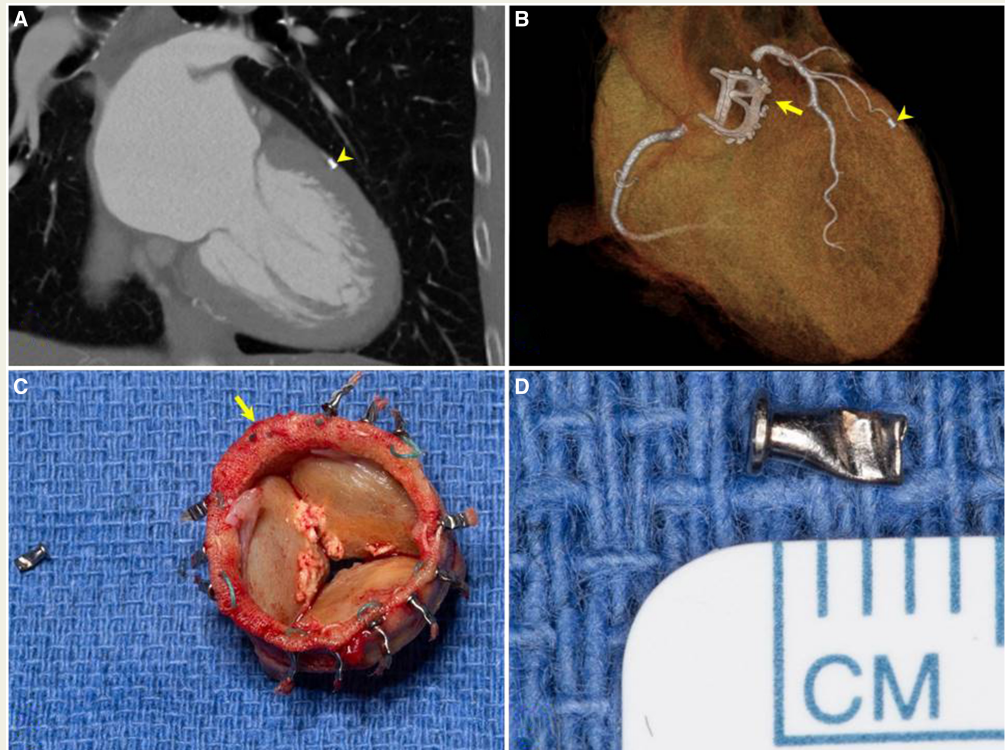
An unusual coronary embolus in a patient with prosthetic endocarditis

Jessey Mathew^{1*}, Jeffrey B. Geske², Sushil Allen Luis², and Hartzell V. Schaff¹

¹Department of Cardiothoracic Surgery, Mayo Clinic, 200 First Street SW, Rochester, MN 55905, USA; and ²Department of Cardiovascular Medicine, Mayo Clinic, 200 First Street SW, Rochester, MN 55905, USA

* Corresponding author. Tel: 507-255-7068, Email: Mathew.jessey@mayo.edu

A 66-year-old woman presented with prosthetic valve endocarditis and native mitral valve endocarditis caused by *Streptococcus mitis* 3 years after an aortic valve (Edwards Lifesciences 23 mm Magna) and aortic root replacement for bicuspid valve at another institution. She denied any chest pain. Transoesophageal echocardiogram demonstrated destructive aortic prosthesis changes, severe periprosthetic regurgitation, and mobile native mitral valve vegetation. A computed tomography (CT) angiogram of the chest to evaluate for periaortic graft infection and preoperative coronary evaluation revealed a high-density, cylindrical,



man-made object in the distal ramus intermedius, suspected to be a Cor-Knot from the aortic valve prosthesis (Panel A). The timing of embolization was unknown. The 3D reconstruction revealed absence of a Cor-Knot from the prosthesis (Panel B). The patient underwent aortic valve re-replacement and mitral valve repair with excision of vegetation from the anterior mitral leaflet. Further surgical exploration confirmed a missing Cor-Knot on the aortic valve prosthesis (Panel C) corresponding to the location noted on CT. The Cor-Knot was successfully removed from the ramus intermedius (Panels C and D). Post-operative recovery was uneventful.

Although Cor-Knot embolization to the coronary has not previously been reported, this case demonstrates that post-operative Cor-Knot embolization may occur and can be asymptomatic. The timing of embolization and role of concomitant infection are uncertain. Visualization of high-density emboli in patients with prior valve replacements should prompt consideration of Cor-Knot embolization as a potential source. In such instances, careful assessment of the valve prosthesis using multiplanar and 3D reconstruction can highlight deficiencies in Cor-Knot placement confirming the diagnosis.

The authors would like to thank Dr Thomas Foley for his assistance in 3D reconstruction of the CT images.