

RESEARCH ARTICLE

The association between long-term exposure to low-level PM_{2.5} and mortality in the state of Queensland, Australia: A modelling study with the difference-in-differences approach

Wenhua Yu^{1,2}, Yuming Guo^{1,2*}, Lihua Shi³, Shanshan Li²

1 Department of Epidemiology, School of Public Health and Management, Binzhou Medical University, Yantai, Shandong, China, **2** Department of Epidemiology and Preventive Medicine, School of Public Health and Preventive Medicine, Monash University, Melbourne, Australia, **3** Gangarosa Department of Environmental Health, Rollins School of Public Health, Emory University, Atlanta, Georgia, United States of America

* yuming.guo@monash.edu**OPEN ACCESS**

Citation: Yu W, Guo Y, Shi L, Li S (2020) The association between long-term exposure to low-level PM_{2.5} and mortality in the state of Queensland, Australia: A modelling study with the difference-in-differences approach. *PLoS Med* 17 (6): e1003141. <https://doi.org/10.1371/journal.pmed.1003141>

Academic Editor: Ellen Kirrane, U.S. EPA, UNITED STATES

Received: January 8, 2020

Accepted: May 13, 2020

Published: June 18, 2020

Copyright: © 2020 Yu et al. This is an open access article distributed under the terms of the [Creative Commons Attribution License](https://creativecommons.org/licenses/by/4.0/), which permits unrestricted use, distribution, and reproduction in any medium, provided the original author and source are credited.

Data Availability Statement: The authors are not permitted to share the third party raw data used in the analyses. For information on data access and R codes, readers are asked to contact Mr. Rongbin Xu (rongbin.xu@monash.edu), who is a data repository manager.

Funding: YG was supported by a Career Development Fellowship of the Australian National Health and Medical Research Council (#APP1107107 and #APP1163693, <https://www.nhmrc.gov.au/>).

Abstract

Background

To date, few studies have investigated the causal relationship between mortality and long-term exposure to a low level of fine particulate matter (PM_{2.5}) concentrations.

Methods and findings

We studied 242,320 registered deaths in Queensland between January 1, 1998, and December 31, 2013, with satellite-retrieved annual average PM_{2.5} concentrations to each postcode. A variant of difference-in-differences (DID) approach was used to investigate the association of long-term PM_{2.5} exposure with total mortality and cause-specific (cardiovascular, respiratory, and non-accidental) mortality. We observed 217,510 non-accidental deaths, 133,661 cardiovascular deaths, and 30,748 respiratory deaths in Queensland during the study period. The annual average PM_{2.5} concentrations ranged from 1.6 to 9.0 µg/m³, which were well below the current World Health Organization (WHO) annual standard (10 µg/m³). Long-term exposure to PM_{2.5} was associated with increased total mortality and cause-specific mortality. For each 1 µg/m³ increase in annual PM_{2.5}, we found a 2.02% (95% CI 1.41%–2.63%; $p < 0.01$) increase in total mortality. Higher effect estimates were observed in Brisbane than those in Queensland for all types of mortality. A major limitation of our study is that the DID design is under the assumption that no predictors other than seasonal temperature exhibit different spatial-temporal variations in relation to PM_{2.5} exposure. However, if this assumption is violated (e.g., socioeconomic status [SES] and outdoor physical activities), the DID design is still subject to confounding.

nhmrc.gov.au/). SL was supported by an Early Career Fellowship of Australian National Health and Medical Research Council (#APP1109193, <https://www.nhmrc.gov.au/>). LS was supported by the HERCULES Exposome Research Centre (P30ES019776, <https://www.emoryhercules.com/>). The funders had no role in study design, data collection and analysis, decision to publish, or preparation of the manuscript.

Competing interests: I have read the journal's policy and the authors of this manuscript have the following competing interests: YG is an Academic Editor and a member of editorial board of *PLOS Medicine*.

Abbreviations: ASGS, Australian Statistical Geography Standard; DID, difference-in-differences; EPA, US Environmental Protection Agency; IQR, interquartile range; HR, hazard ratio; NAAQS, National Ambient Air Quality Standards; PM_{2.5}, fine particulate matter; PM₁₀, particulate matter with a diameter of less than 10 micrometers; SD, standard deviation; SEIFA, Socio-Economic Indexes for Areas; SES, socioeconomic status; SILO, Scientific Information for Land Owners; STROBE, Strengthening the Reporting of Observational Studies in Epidemiology; WHO, World Health Organization.

Conclusions

Long-term exposure to PM_{2.5} was associated with total, non-accidental, cardiovascular, and respiratory mortality in Queensland, Australia, where PM_{2.5} levels were measured well below the WHO air quality standard.

Author summary

Why was this study done?

- Long-term exposure to fine particulate matter (PM_{2.5}) is identified as one of the leading risk factors for death. However, previous studies have been subject to uncertainty and potential biases due to unmeasured or omitted confounders.
- The difference-in-differences (DID) approach could mimic an experimental research design using observational study data to provide an effect estimate by adjusting for unmeasured confounders.
- Few studies investigate the influence of long-term exposure to low-level PM_{2.5} on cause-specific mortality, particularly for the concentrations consistently well below the current WHO annual standard.

What did the researchers do and find?

- We used a variant of the DID approach to investigate the association between long-term exposure to low-level PM_{2.5} and cause-specific mortality in Queensland, Australia, between 1998 and 2013.
- We studied 242,320 registered deaths from 7 categories of diseases in Queensland and found a 2.02% increase in total mortality for each 1 µg/m³ increase in annual PM_{2.5}.
- The associations were consistent across cardiovascular, respiratory, and non-accidental mortality.

What do these findings mean?

- Our findings support growing evidence that, when controlling for unmeasured confounders by design, low-level PM_{2.5} exposure may contribute to increased risk of mortality.
- Long-term exposure to PM_{2.5}-mortality association even at PM_{2.5} levels below the WHO air quality guideline informs decision-making for environmental health management and making air pollution control strategies.
- The findings should be interpreted cautiously because the DID design is based on the assumption that all potential spatial-temporal factors were controlled, and the variability of confounders was held constant during the study period.

Introduction

Ambient particulate matter with diameters less than 2.5 micrometers (fine particulate matter; PM_{2.5}) has been identified as the fifth leading mortality risk factor in 2015, contributing to 4.2 million deaths [1]. While a growing body of literature [2–6] has examined the causal effect of PM_{2.5} on mortality, scientific evidence remains weak. Causal model approaches seek to mimic randomized controlled trials, whereby exposure is measured independent of the other predictors of the health outcome. This effectively eliminates the possibility of confounding. Propensity score matching and inverse probability weighting are the most common approaches to reweight the study populations to ensure exposure is independent of all measured confounders [7]. Wu and colleagues applied a propensity score approach to estimate the causal effect of long-term PM_{2.5} exposures on mortality in New England [8]. Wang and colleagues employed a doubly robust causal modelling approach with inverse probability weights to estimate the hazards of long-term exposure to PM_{2.5} on survival in the southeast United States [9]. However, this method only accounts for measured confounders and unmeasured biases that are highly correlated with the measured confounders [10]. Another approach to estimating the causal effect is the regression discontinuity design. This approach compares observations lying closely on either side of a threshold to estimate the average treatment effect [11]. In one such study, Avraham Ebenstein and colleagues employed the regression discontinuity design to investigate the causal effect of particulate matter with a diameter of less than 10 micrometers (PM₁₀) on Chinese life expectancy by assigning different coal subsidy policies for indoor heating on both sides of Huai River [12]. However, the estimated effects could still be misled by other potential confounders that occur at the same threshold [13].

To address this limitation, a difference-in-differences (DID) approach has been proposed [14]. DID estimates the effect of an exposure or treatment on an outcome by comparing the average change over time in the outcome variable for a treatment group, compared to the average change over time for a control group. A DID method mimics an experimental research design using observational study data to provide a causal estimate by adjusting for unmeasured confounders. It assumes that differences between outcomes that change over time are caused by the differences between the observed and counterfactual exposures, rather than by other factors such as socioeconomic status (SES), population, smoking, and obesity, because such factors among other unmeasured confounders are similar between locations across time. Several studies have utilized the DID method to explore the association between PM and mortality [2,15–18]. For example, Corrigan and colleagues used a DID approach to examine the association between changes in PM_{2.5} and changes in cardiovascular mortality rates before and after the implementation of a new PM_{2.5} National Ambient Air Quality Standards (NAAQS) in the US [17]. Wang and colleagues estimated the causal effect of long-term exposure to PM_{2.5} on mortality in New Jersey by developing a variant of the DID approach [2]. Similar models were used to assess the long-term PM_{2.5}-mortality association in 207 cities across the US [18].

Most of the DID studies estimated the effect of long-term exposure to PM and mortality at relatively high concentrations [15,16,19]. For example, Matteo Renzi and colleagues used a DID approach to estimate the effect of annual PM₁₀ exposure with a range of 21.9 ±4.9 µg/m³ in the Latium region, Italy [15]. Another study's estimated mortality changes were specifically attributable to high exposure to PM_{2.5} in China between 2000 and 2010 [19]. However, growing studies have shown that there is no obvious PM_{2.5} threshold for the PM_{2.5}-mortality association even at PM_{2.5} levels under the World Health Organization (WHO) air quality guideline (10 µg/m³ of annual average PM_{2.5}). A meta-analysis including 14 studies conducted on participants with average exposure to PM_{2.5} below 10 µg/m³ supported the nonlinear PM_{2.5}-mortality exposure-response association, where the effect increased rapidly at lower concentrations

[20]. However, few studies [3,4] have explored the association of PM_{2.5} with mortality below a concentration of 10 µg/m³. Therefore, exploring the relationship between long-term low levels of PM_{2.5} and cause-specific mortality is warranted, particularly in areas with consistently low PM_{2.5} concentrations in Australia.

In addition, significant differences exist between rural and urban areas in terms of population characteristics, air pollution concentration, and chemical and physical composition. These may contribute to different health effects on cause-specific mortality, especially in Queensland, where approximately half of the population lives in the Brisbane metropolitan area. To address this gap, we assessed the association of long-term exposure to low-level PM_{2.5} with total mortality and cause-specific mortality from cardiovascular, respiratory, and non-accidental causes in Queensland and Brisbane during 1998–2013 using a DID approach [2].

Methods

This study is reported as per the Strengthening the Reporting of Observational Studies in Epidemiology (STROBE) guideline (S1 STROBE Checklist). We did not include a formal prospective analysis plan, but the study methodology and analysis were planned before conducting the DID approach, with the exception of the analysis of relative change rate and the effect modification by stratifying the age groups. This study was approved by the Monash University Human Research Ethics Committee.

Study area

Queensland is the second largest state in Australia, with an area of 1,852,642 square kilometers, and located in the northeast of the country [21] (Fig 1). Typically, Queensland experiences two weather seasons: a winter with mild temperatures and minimal rainfall, and a humid summer with both high temperatures and high levels of rainfall. As of 2016, it was composed of 4,689,134 inhabitants (449 postcode zones), mainly concentrated along the coast and in the state's South East. Brisbane was the largest city in the state, with 2,109,466 residents in 2016. In this study, Brisbane was divided into a total of 119 postcode zones.

Data resources

Individual-level data, such as sex, age, and total and cause-specific mortality from 1 January, 1998, to 31 December 2013, were obtained from Queensland Health (<https://www.health.qld.gov.au/public-health>). Daily data on temperature were obtained from the Scientific Information for Land Owners (SILO) data set (<https://www.longpaddock.qld.gov.au/silo/>). Annual population and SES census data (including weekly income per person, Socio-Economic Indexes for Areas [SEIFA]) were provided by the Australian Bureau of Statistics (<https://www.abs.gov.au/>).

All mortality data were coded with the ICD-9 code before 1999 or ICD-10 code after that time. Specifically, the diseases of interest included the following: mental and behavioral disorders (F00–F99), diseases of the nervous system (G00–G99), diseases of the circulatory system (I00–I99), diseases of the respiratory system (J00–J99), diseases of the digestive system (K00–K93), diseases of the genitourinary system (N00–N99), and external causes of morbidity and mortality (V01–Y98). In this study, we focus on the annual counts of death from non-accidental causes (all above diseases except for V01–Y98), cardiovascular (ICD-9: 390–459, ICD-10: I00–I99), and respiratory causes (ICD-9: 460–519, ICD-10: J00–J99) during the study period (1998–2013).

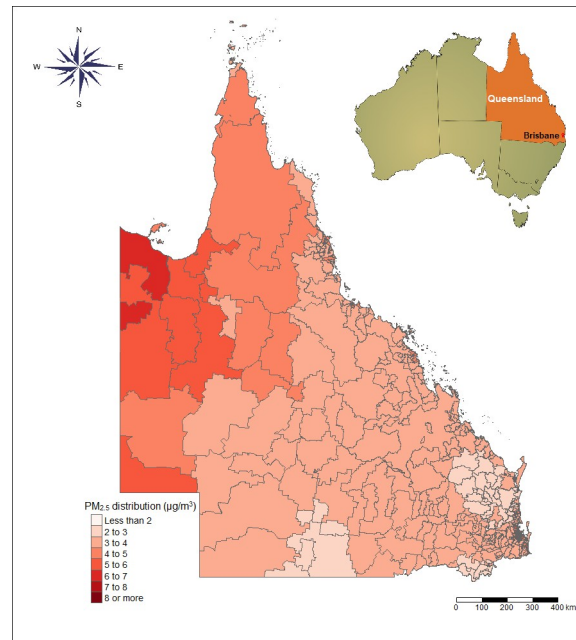


Fig 1. The annual average PM_{2.5} concentrations in Queensland during 1998–2013. PM_{2.5}, fine particulate matter (particulate matter with a diameter of <2.5 µm). The base map was obtained from Australian Statistical Geography Standard (ASGS), <https://www.abs.gov.au/websitedbs/d3310114.nsf/home/digital+boundaries>, CC BY 2.5 AU.

<https://doi.org/10.1371/journal.pmed.1003141.g001>

Exposure data

The annual mean PM_{2.5} data were derived from the Atmospheric Composition Analysis Group, which estimated annual PM_{2.5} concentrations at 0.01° × 0.01° (approximately 1 km × 1 km) spatial resolution globally using a Geographically Weight Regression with an out-of-sample cross-validated R^2 of 0.81. The regression incorporated satellite data, simulated aerosol composition, and land use information [22]. The population-weighted annual mean PM_{2.5} concentrations were assigned to each postcode area.

Statistical analyses

DID method. This study was based on a variant of DID design [2] to investigate the relationship of PM_{2.5} with total mortality and cause-specific mortality (non-accidental, cardiovascular, and respiratory causes). The substance of the DID design is that through comparing the same population to itself at different time points, some unmeasured individual and behavioral factors that remain constant over time have been controlled. In this study, the DID design was used to estimate the effect of PM_{2.5} on mortality by comparing the concordance between differences in counts of cause-specific deaths and differences in PM_{2.5} over time (from 1998 to 2013) in a given location (449 spatial units of postcode areas in this study). Specifically, a typical DID model is as follows:

$$Y_{ct}^{A=\alpha} = \beta_0 + \beta_1\alpha + \beta_2Z_c + \beta_3U_t + \beta_4W_{ct} + \epsilon \quad (1)$$

where $Y_{ct}^{A=\alpha}$ is the outcome in location c and year t under exposure $A = \alpha$, α is PM_{2.5} concentration, Z_c reflects spatial confounders with minimal variability over the time period (e.g., SES); U_t represents temporal confounders that change over time but not among locations; and W_{ct} denotes confounders that vary across time and locations. Therefore, differences in

outcomes between time periods will be

$$Y_{ct}^{A=z_t} - Y_{c(t-1)}^{A=z_{t-1}} = \beta_1(\alpha_t - \alpha_{t-1}) + \beta_3(U_t - U_{t-1}) + \beta_4(W_{c,t} - W_{c,t-1}) \tag{2}$$

whereby β_{c0} and Z_c have cancelled out because effects occur simultaneously in the location c . If we take the difference of these differences above between locations c and \hat{c} , we have

$$\begin{aligned} & [Y_{ct}^{A=z_t} - Y_{c(t-1)}^{A=z_{t-1}}] - [Y_{\hat{c}t}^{A=b_t} - Y_{\hat{c}(t-1)}^{A=b_{t-1}}] \\ &= \beta_1[(\alpha_t - \alpha_{t-1}) - (b_t - b_{t-1})] + \beta_4[(W_{c,t} - W_{c,t-1}) - (W_{\hat{c}t} - W_{\hat{c}t-1})] \end{aligned} \tag{3}$$

where b is the exposure in location \hat{c} . If the changes in $W_{c,t}$ between time $t - 1$ and t are the same in both locations, $[(W_{c,t} - W_{c,t-1}) - (W_{\hat{c}t} - W_{\hat{c}t-1})]$ will equal zero. The difference in outcomes between locations relies solely on changes in exposure (i.e., the causal estimate). Hence, the benefit of this approach is that the known and unknown confounders have been adjusted. Historically, the DID model has been used in two places over two study periods; nevertheless, Wang and colleagues [2] developed this approach using a generalized case with multiple locations and time periods.

In our study, we fit a model as follows:

$$\begin{aligned} \ln[E(Y_{c,t})] = & \beta_{c0} + \beta_1 PM_{c,t} + \beta_2 I_c + \beta_3 I_t \\ & + \beta_4 Temp_{sum} + \beta_5 Temp_{win} + \beta_6 sd_temp_{sum} + \beta_7 sd_temp_{win} + \beta_8 SEIFA \\ & + offset(\log(P_{c,t})) \end{aligned} \tag{4}$$

where $Y_{c,t}$ denotes the number of deaths in spatial unit c and year t ; $PM_{c,t}$ denotes the annual mean concentration of PM_{2.5} in unit c and time t ; I_c is a dummy variable for each spatial unit in 449 postcode areas in Queensland; I_t represents a dummy variable for each year from 1998 to 2013; $Temp_{sum}$, $Temp_{win}$ and sd_temp_{sum} , sd_temp_{win} reflect average temperatures and their standard deviations (SDs) for both summer and winter, respectively; and sd_temp_{sum} and sd_temp_{win} were included to control the fluctuations and variations of seasonal temperature [23]. SEIFA was the Socio-Economic Indexes for Areas, which in this model, reflects the level of economic development in a particular place. We added $offset(\log(P_{c,t}))$ as an offset term using logarithms of the annual population of each place. The outcomes were presented as percent increase risk of cause-specific mortality for 1 µg/m³ increase in annual PM_{2.5}.

Our model is based on the following assumptions: (1) The DID relies on a parallel trend assumption that in the absence of intervention (e.g., in the absence of the impact of PM_{2.5} or the concentration of PM_{2.5} remains constant in this study), the unobserved differences among locations are constant over time. Although there is no statistical test for this assumption, annual trends were evaluated visually for relative changes in PM_{2.5} and mortality rate over 16 years. We applied a relative change rate ($RC_{c,t}$) to calculate the percentage change for each area unit in each year with the following equation: $RC_{c,t} = (R_{c,t} - E_c) / E_c \times 100$; $E_c = \frac{\sum_{t=1998}^{2013} R_{c,t}}{16}$, where $RC_{c,t}$ denotes the annual percent changes of PM_{2.5} or mortality rate in area c , year t ; $R_{c,t}$ is the annual concentration of PM_{2.5} or the cause-specific mortality rate in the same stratum; and E_c denotes the average of $R_{c,t}$ from 1998 to 2013 in each area unit. (2) We assumed that, apart from seasonal temperature, no predictors exhibit differential spatial-temporal variations in relation to the exposure [2,15]. Under that assumption, overall spatial and temporal confounding is removed from the DID design. However, if this assumption is violated, the DID design is still subject to confounding.

Conditional Poisson regression. We applied a conditional Poisson regression model [24] to perform the DID design, to estimate the association of long-term exposure to PM_{2.5} with

mortality using the “gnm” package in R software (version 3.2.5). We adjusted for summer and winter temperatures and SEIFA effect, conditional on strata of spatial units. Additionally, we also estimated whether the effect was modified by different proportions of age and sex based on Census 2016 data using subgroup analyses.

Sensitivity analysis. We performed sensitivity analyses to test the robustness of the results using a random-effects meta-analysis, estimating whether the effect estimate in a specific population was disparate from the pooled effect estimate in Queensland. The potential nonlinearity of the association between PM_{2.5} and total and cause-specific mortality was examined using cubic splines with 3 degrees of freedom. We also modelled the summer and winter temperatures using natural splines with 3 and 4 degrees of freedom, respectively, to assess for modification of health effects of PM_{2.5} by season. In order to control the impact of the population age structure, we tested the effect modification by stratifying the population into two age groups: <65 years and ≥65 years, using the offset term of age-specific person-years. All analyses were conducted using R software (version 3.2.5).

Results

We studied 242,320 deaths in 7 categories of diseases (ICD10: F00–F99, G00–G99, I00–I99, J00–J99, K00–K93, N00–N99, V01–Y98) from 1998 to 2013, which accounted for 60.5% of registered deaths during the study period. Specifically, 217,510 non-accidental deaths, 133,661 deaths from cardiovascular diseases, and 30,748 deaths from respiratory diseases in the Queensland region were investigated. [Table 1](#) displays the distribution of deaths, PM_{2.5}, and temperature in Brisbane and Queensland over the study period. In short, 81.9% of deaths were over 65 years old and 50.8% were male. The average PM_{2.5} concentrations were 6.0 µg/m³ (range: 2.13–8.00 µg/m³) in Brisbane ([S1 Fig](#)) and 3.63 µg/m³ (range: 1.63–9.00 µg/m³) in Queensland ([Fig 1](#)), with interquartile ranges (IQRs) of 2.00 µg/m³ and 2.23 µg/m³, respectively. There was a decrease of 9.33% in the standardized death rate in Queensland over the 16-year study period ([S1 Table](#)). There was no significant change in PM_{2.5} or temperature during the study period. The annual average PM_{2.5} ranged from 2.01 to 5.28 µg/m³, along with a downward trend from 1998 to 2008 and with slight increase between 2008 and 2013. The range of seasonal mean temperature varied from 24.5°C to 26.5°C in summer and from 15.0°C to 16.4°C in winter ([S1 Table](#)). In terms of the relative changes of PM_{2.5} and mortality rate, we calculated the percentage changes ($RC_{c,t}$) of both the annual concentration of PM_{2.5} and the total mortality rates for all area units in the study period, as presented in [Fig 2](#). As depicted, changes in mortality rates loosely follow changes in the PM_{2.5} concentrations, which can support our parallel trend assumption, although a reverse trend was observed in 2010.

In this study, we found a significant association between long-term exposure to PM_{2.5} and total mortality, with 2.02% (95% CI 1.41%–2.63%; $p < 0.01$) and 5.65% (95% CI 4.08–7.25%; $p < 0.01$) increases in total mortality per 1 µg/m³ increase in annual PM_{2.5} in Queensland and Brisbane, respectively. We also observed increases in cause-specific mortality associated with elevated PM_{2.5} levels ([Table 2](#)). Higher effect estimates were observed in Brisbane than those in Queensland for all types of mortality.

We additionally investigated the association between long-term PM_{2.5} and cause-specific mortality grouped by age and sex ([Table 3](#)). In Queensland, individuals under the age of 65 had a high risk of total, non-accidental, and cardiovascular death, with 5.76% (95% CI 4.29%–7.25%; $p < 0.01$), 6.18% (95% CI 4.29%–8.11%; $p < 0.01$), and 6.50% (95% CI 4.08%–9.20%; $p < 0.01$), respectively. In contrast, residents in Brisbane over the age of 65 were more likely to have elevated risk with 5.02% (95% CI 3.46%–6.50%; $p < 0.01$) and 4.08% (95% CI 2.22%–6.08%; $p < 0.01$) in non-accidental and cardiovascular mortality, respectively, for every 1 µg/

Table 1. The descriptive summary of population, income, SEIFA, mortality, PM_{2.5}, and temperature in Queensland.

Characteristic	Brisbane	Other states	Queensland
Population	2,109,466	2,579,668	4,689,134
<65 age (%)	87.04	82.84	84.75
≥65 age (%)	12.96	17.16	15.25
Census account	119	330	449
Weekly income/person (median)	725.0	597.0	623.5
SEIFA	4,132	3,867	3,910
Death counts per year for sex			
Female (%)	3,324 (51.91)	4,130 (48.35)	7,453 (49.21)
Male (%)	3,080 (48.09)	4,611 (51.65)	7,692 (50.79)
Death counts per year for age groups			
<65 age (%)	1,066 (16.65)	1,670 (19.11)	2,736 (18.07)
≥65 age (%)	5,338 (83.35)	7,071 (80.89)	12,409 (81.93)
Death counts for diseases			
Non-accidental	93,188	124,322	217,510
Cardiovascular	57,099	76,562	133,661
Respiratory	13,384	17,364	30,748
Death counts per year	102,464	139,856	242,320
Environmental data			
PM _{2.5} (median)	6.0 [5.0, 7.0]	3.0 [3.0, 3.8]	3.6 [3.0, 5.2]
Mean winter temperature	15.6 (2.0)	15.8 (2.4)	15.8 (2.7)
Mean summer temperature	24.8 (1.9)	25.9 (1.9)	25.6 (2.0)

Data are presented as mean (SD) for continuous normally distributed variables, median [IQR] for continuous non-normally distributed variables, or number (%) for categorical variables. Population, census account, and SEIFA are based on census 2016 data.

Abbreviations: IQR, interquartile range; PM_{2.5}, fine particulate matter (particulate matter with a diameter of <2.5 μm); SD, standard deviation; SEIFA, Socio-Economic Indexes for Areas

<https://doi.org/10.1371/journal.pmed.1003141.t001>

m³ increase in annual average PM_{2.5}. We also found larger effect estimates for the total mortality in females versus males in Queensland (2.84%, 95% CI 1.92%–3.67%; $p < 0.01$ versus 1.31%, 95% CI 0.50%–2.22%; $p < 0.01$).

Sensitivity analyses indicate our main findings are robust. With a random effect meta-analysis, we found that there were statistically significant pooled effects with a 2.76% (95% CI 0.61%–3.97%; $p < 0.01$) increase in total mortality, a 2.28% (95% CI 0.61%–3.97%; $p < 0.01$) increase in cardiovascular mortality, a 5.55% (95% CI 3.75%–7.39%; $p < 0.01$) increase in respiratory mortality, and a 2.88% (95% CI 1.37%–4.41%; $p < 0.01$) increase in non-accidental mortality (Fig 3 and S2 Table). The associations between PM_{2.5} and total/cause-specific mortality tend to be nonlinear, with a threshold around 4.5 μg/m³ for PM_{2.5} exposure (Fig 4). In addition, after modification by age group, we estimated a 5.21% (95% CI 3.20%–7.25%; $p < 0.01$) increase in total mortality among the <65 age group, whereas we estimated a 0.95% (95% CI –1.20% to 3.14%; $p = 0.39$) increase among subjects ≥65 years old, which were consistent with our model results (S3 Table). Moreover, the results were similar after adjusting for both the annual average and SD of temperature using natural splines with 3 and 4 degrees of freedom, respectively (S4 Table).

Discussion

This study examined the association of low levels of PM_{2.5} (<9.0 μg/m³) with cause-specific mortality using a DID approach, which controls for potential unmeasured and omitted

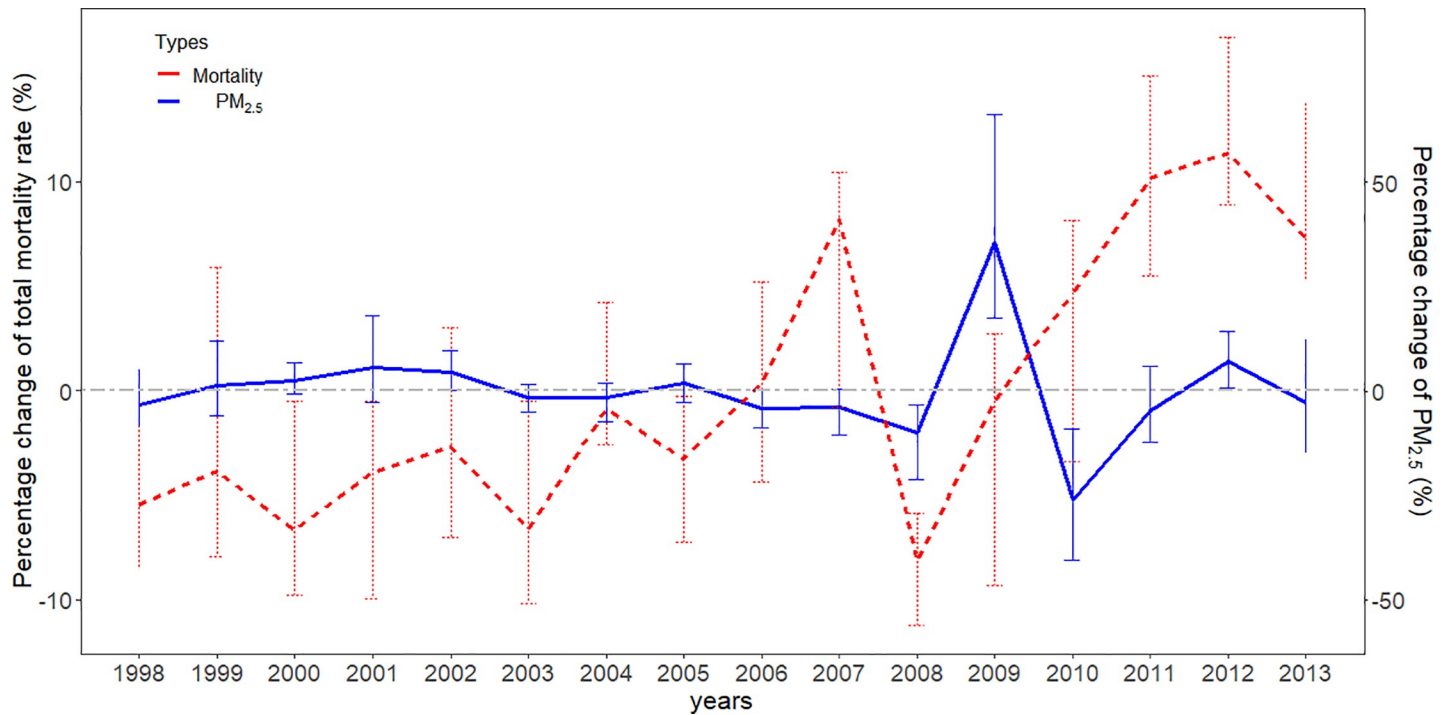


Fig 2. The percentage changes in mortality rate and PM_{2.5} concentrations in area units during 1998–2013. The percentage changes are the percent difference between the values of PM_{2.5} or mortality rate (per 1,000 persons) in area unit specific to each year and the average of the values from 1998 to 2013 in the same area unit, divided by the average of the values in area unit specific to the time from 1998 to 2013. The error bars for both lines are the range (maximum–minimum) of all areas. PM_{2.5}, fine particulate matter (particulate matter with a diameter of <2.5 μm).

<https://doi.org/10.1371/journal.pmed.1003141.g002>

confounders. We found that long-term exposure to PM_{2.5} was associated with increased risks of total mortality and cause-specific mortality, despite low-level concentrations falling consistently below the current WHO annual standard (10 μg/m³). Furthermore, the effect estimates were higher in the urban area (Brisbane) when compared to statewide estimates for the study period.

In the presence of unmeasured confounders, it is difficult to determine causality in observational studies, especially for relatively weak health risk factors such as particulate matter. The PM_{2.5}-mortality association may be affected by factors that are not perfectly measured or routinely collected, such as SES and outdoor physical activities. Therefore, if these unmeasured factors are omitted or unavailable, it might result in biased effect estimates [25,26]. It should

Table 2. Associations between long-term PM_{2.5} and cause-specific mortality.

Mortality types	Brisbane		Queensland	
	Percent increase (95% CI)	p-Value	Percent increase (95% CI)	p-Value
Non-accidental	5.65 (4.08–7.25)	<0.01	1.92 (1.36–2.63)	<0.01
Cardiovascular	4.08 (2.02–6.18)	<0.01	1.41 (0.60–2.22)	<0.01
Respiratory	7.25 (3.05–11.29)	<0.01	5.44 (3.67–7.25)	<0.01
Total	5.65 (4.08–7.25)	<0.01	2.02 (1.41–2.63)	<0.01

Total mortality includes 7 kinds of classification of diseases (ICD-10: F00–F99, G00–G99, I00–I99, J00–J99, K00–K93, N00–N99, V01–Y98). Non-accidental causes include all the above diseases except for V01–Y98. Cardiovascular deaths (ICD-9: 390–459; ICD-10: I00–I99); respiratory causes (ICD-9: 460–519; ICD-10: J00–J99). Abbreviation: PM_{2.5}, fine particulate matter (particulate matter with a diameter of <2.5 μm)

<https://doi.org/10.1371/journal.pmed.1003141.t002>

Table 3. Associations between long-term PM_{2.5} and cause-specific mortality in different ages and sexes in Queensland and Brisbane.

Subgroup	Area	Non-accidental		Cardiovascular		Respiratory		Total	
		Percent increase (95% CI)	p-Value	Percent increase (95% CI)	p-Value	Percent increase (95% CI)	p-Value	Percent increase (95% CI)	p-Value
<65 ages	Brisbane	2.33	0.26	-3.23	0.18	4.50	0.45	3.36	0.04
		(-1.59, 6.40)		(-8.39, 1.61)		(-6.76, 17.00)		(0.10, 6.61)	
	Queensland	6.18	<0.01	6.50	<0.01	3.98	0.13	5.76	<0.01
		(4.29, 8.11)		(4.08, 9.20)		(-1.19, 9.42)		(4.29, 7.25)	
≥65 ages	Brisbane	5.02	<0.01	4.08	<0.01	5.55	<0.01	4.92	<0.01
		(3.46, 6.50)		(2.22, 6.08)		(1.61, 9.75)		(3.46, 6.61)	
	Queensland	1.41	<0.01	0.70	0.07	5.65	<0.01	1.21	<0.01
		(0.70, 2.12)		(-0.10, 1.61)		(3.77, 7.57)		(0.60, 1.92)	
Female	Brisbane	7.79	<0.01	6.50	<0.01	11.29	<0.01	7.90	<0.01
		(5.76, 9.75)		(3.98, 9.09)		(5.55, 17.23)		(5.97, 9.86)	
	Queensland	2.84	<0.01	2.12	<0.01	7.57	<0.01	2.84	<0.01
		(1.92, 3.77)		(1.01, 3.36)		(4.92, 10.19)		(1.92, 3.67)	
Male	Brisbane	1.82	0.08	0.10	0.88	0.70	0.78	2.02	0.04
		(-0.20, 3.87)		(-2.37, 2.74)		(-4.21, 5.87)		(0.10, 3.87)	
	Queensland	1.21	<0.01	0.60	0.30	3.77	<0.01	1.31	<0.01
		(0.30, 2.02)		(-0.50, 1.82)		(1.41, 6.18)		(0.50, 2.22)	

Data are presented as the percent increase in death. Total mortality includes 7 kinds of classification of diseases mortality (ICD10: F00–F99, G00–G99, I00–I99, J00–J99, K00–K93, N00–N99, V01–Y98). Non-accidental causes include all the above diseases mortality except for V01–Y98. Cardiovascular deaths (ICD-9: 390–459; ICD-10: I00–I99); respiratory causes (ICD-9: 460–519, ICD-10: J00–J99).

Abbreviation: PM_{2.5}, fine particulate matter (particulate matter with a diameter of <2.5 μm)

<https://doi.org/10.1371/journal.pmed.1003141.t003>

be noted that many factors affect PM_{2.5}-attributable mortality rates [27]. In addition to the variations witnessed in nonlinear exposure–response relationship across different causes of deaths [20,27–29], regional variations in ambient PM_{2.5}, population characteristics, and baseline disease incidence rates all contribute to variations of PM_{2.5}-attributable mortality [27]. Even though controlled exposure studies [30] and randomized participants [31] could reduce certain sources of bias and control for the unmeasured confounders, ethical considerations could be given on account of the potential for toxic components in the chemical composition of PM_{2.5}.

However, a well-designed observational study such as a DID method may overcome the limitations of a nonrandomized observational study [18,32]. A case in a DID study is compared to itself at different time points so that certain confounders (including the unmeasured ones) such as population structure and lifestyle factors that remain stable or rarely varied during the study period are cancelled out because the comparisons occur among the population in the same places [15,19,33,34]. In our case, we controlled for certain slow-changing spatial-temporal variations by design, such as population and SES, which play a role in confounding the PM_{2.5}-mortality association [18]. We also included seasonal temperature, which varies in different periods across the study areas and correlated to PM_{2.5} exposure and mortality as well as other potential factors. Controlling for temperature may indirectly remove the impacts of other factors like influenza epidemics. Therefore, we assumed that most unmeasured potential and omitted confounders had been controlled.

Several studies have used a similar DID design to investigate the potential association between long-term PM exposure and mortality [2,16–19]. For comparison purposes, we have converted the percent change in our study to a 10 μg/m³ increase and found a 22.14% (95% CI

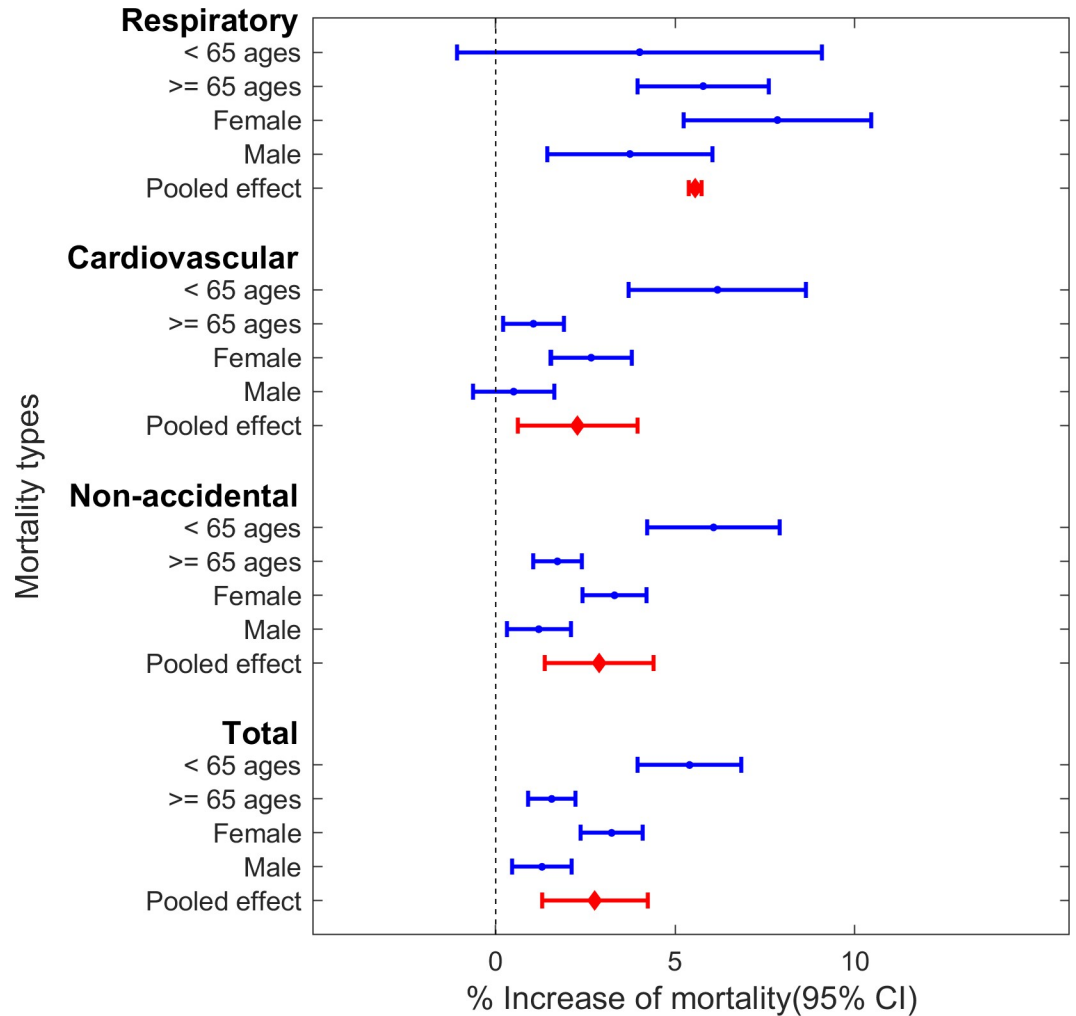


Fig 3. The pooled effects of PM_{2.5}-mortality associations in Queensland by using a random effect meta-analysis. Total mortality includes 7 kinds of classification of diseases (ICD-10: F00–F99, G00–G99, I00–I99, J00–J99, K00–K93, N00–N99, V01–Y98). Non-accidental includes all above diseases except for V01–Y98. Cardiovascular (ICD-9: 390–459, ICD-10: I00–I99); respiratory causes (ICD-9: 460–519, ICD-10: J00–J99). PM_{2.5}, fine particulate matter (particulate matter with a diameter of <2.5 μm).

<https://doi.org/10.1371/journal.pmed.1003141.g003>

15.02%–29.69%) increase in total mortality for the entire population of Queensland. This finding was slightly higher than that of Wang and colleagues [2], who developed a variant of DID approach to study 1938 census tracts in New Jersey from 2004 to 2009. They reported that each 10 μg/m³ increase in annual PM_{2.5} was associated with a 15.5% (95% CI 0.8%–32.3%) increase in the natural-cause mortality. Different outcome metrics might explain differences in results, e.g., we used 7 causes of death in Queensland instead of the natural-cause mortality. Another study estimated the city-specific health effects of PM_{2.5} on mortality in 207 US cities between 2000 and 2010. They observed a link between long-term PM_{2.5} and mortality with a hazard ratio (HR) of 1.2 (95% CI 1.1–1.3) for each 10 μg/m³ increase in annual PM_{2.5}. However, direct comparisons between these results and the current study should be cautious because they combined the city-specific exposure, which tends to have different mixture composition of ambient particles [35].

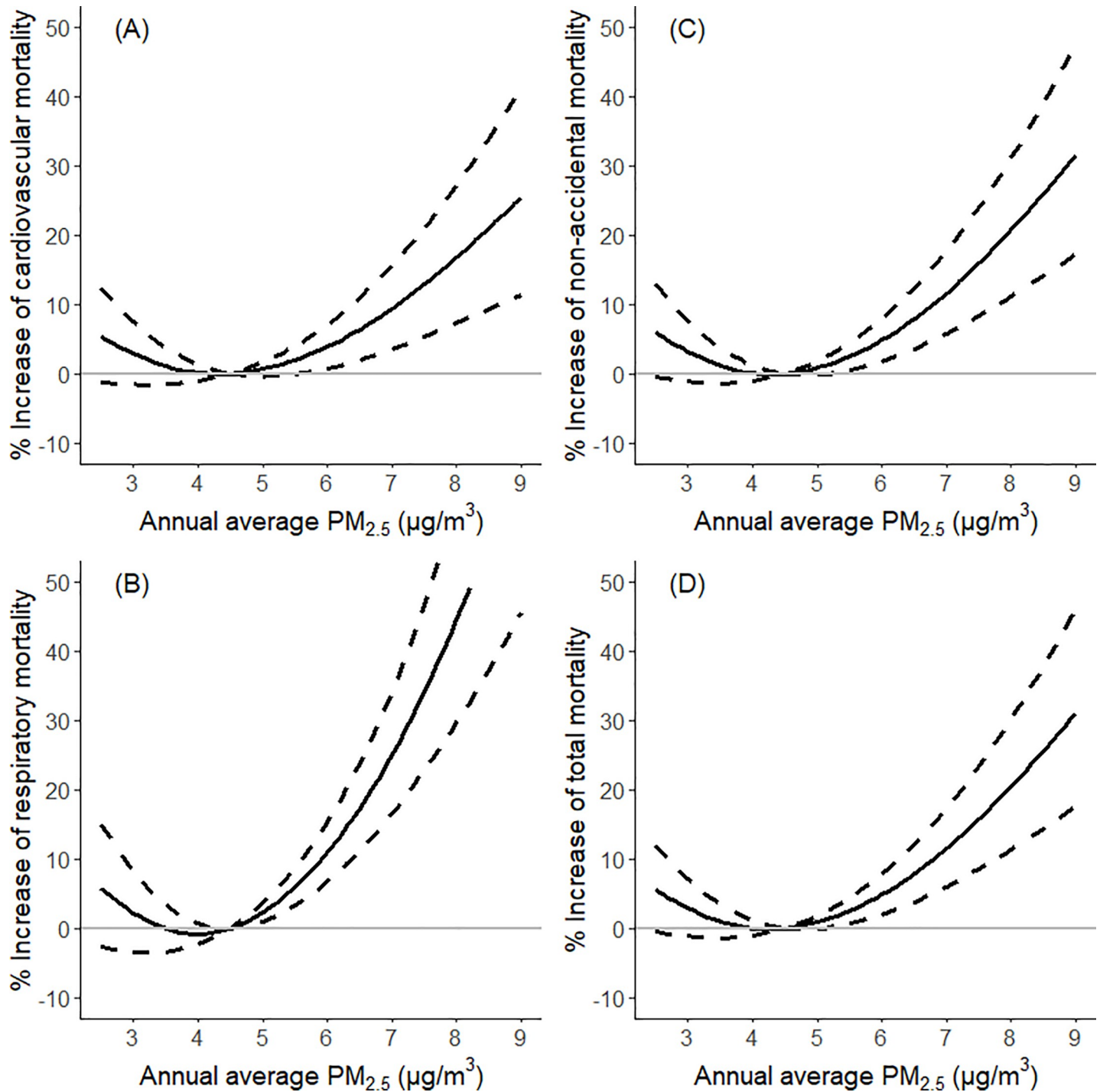


Fig 4. The association between annual average PM_{2.5} and the increase of cause-specific/total mortality in Queensland from 1998 to 2013. The association was examined using cubic splines with 3 degrees of freedom in generalized nonlinear models. Dotted lines: 95% CI; (A) cardiovascular causes: ICD-9: 390–459; ICD-10: I00–I99; (B) respiratory causes: ICD-9: 460–519; ICD-10: J00–J99; (C) non-accidental causes: ICD-10: F00–F99, G00–G99, I00–I99, J00–J99, K00–K93, N00–N99; and (D) total mortality: ICD-10: F00–F99, G00–G99, I00–I99, J00–J99, K00–K93, N00–N99, V01–Y98. PM_{2.5}, fine particulate matter (particulate matter with a diameter of <2.5 µm).

<https://doi.org/10.1371/journal.pmed.1003141.g004>

The yields in this study were higher compared to many previous cohort studies [36–40]. For example, a recent representative cohort of American adults [40] estimated the HR of 1.12 (95% CI 1.08–1.15) for all-cause mortality and 1.23 (95% CI 1.17–1.29) for cardiopulmonary mortality per 10 $\mu\text{g}/\text{m}^3$ long-term exposure to PM_{2.5}. Most of the cohort studies are based on the exposure levels at a fixed time or area and consider some potential confounders that have been measured or observed. Our study considers the variability in exposure and potential influences in time and space, and the unmeasured confounders were captured by design. While cohort studies primarily rely on survey design and methodologies to obtain individual-level data, our study focuses on the spatiotemporal effects of PM_{2.5} on mortality at a macro scale by comparing differences in mortality and exposure of PM_{2.5} by postal code. In a systematic review, Vodonos and colleagues observed higher estimates in the hybrid space-time model than other methods [20]. In addition, another possible explanation for the relative high results in our study might be that the PM_{2.5} concentrations were much lower than in other studies, with a mean exposure of 3.63 $\mu\text{g}/\text{m}^3$ ($<9.00 \mu\text{g}/\text{m}^3$) in Queensland. Previous studies [20,41] have provided evidence for a nonlinear PM_{2.5}-mortality association, where mortality increased sharply with low exposure levels and leveled off at higher exposure. A recent systematic review [20] estimated a 1.29% (95% CI 1.09–1.50) increase in all-cause mortality per 1 $\mu\text{g}/\text{m}^3$ increase in PM_{2.5} at a mean exposure of 10 $\mu\text{g}/\text{m}^3$, which decreased to 1.03% (95% CI 0.97–1.11) at 15.7 $\mu\text{g}/\text{m}^3$ and to 0.82% (95% CI 0.52–1.12) at 30 $\mu\text{g}/\text{m}^3$. They also restricted concentrations of PM_{2.5} to $<10 \mu\text{g}/\text{m}^3$ and found a 2.4% (95% CI 0.80–4.00) increase per 1 $\mu\text{g}/\text{m}^3$, which is consistent with our results.

Our results show a PM_{2.5}-mortality association at levels below the current WHO air quality standard. Throughout the study period, the annual PM_{2.5} concentrations across Queensland areas were well below the current the WHO standard (10 $\mu\text{g}/\text{m}^3$ of annual average PM_{2.5}) and the US Environmental Protection Agency (EPA) standard (12 $\mu\text{g}/\text{m}^3$ of annual average PM_{2.5}); however, the PM_{2.5}-mortality association remained present in spite of this. A growing body of research has suggested that low-level PM_{2.5} exposure may increase mortality. Shi and colleagues estimated a 9.28% increase in mortality for every 10- $\mu\text{g}/\text{m}^3$ increase in annual PM_{2.5} for populations ≥ 65 years in the US. [42]. Aligning with our study, Markar and colleagues [3] and Schwartz and colleagues [4] used different causal reference methods to estimate the effects on mortality at concentrations of PM_{2.5} below the standards.

Mounting toxicological literature has provided evidence for the causal effect of PM_{2.5} on mortality [43–46]. For example, one study on animals [45] reported that mice with 6 months exposure to a low concentration of PM_{2.5} compared with animals exposed to filtered air demonstrated marked increases in atherosclerotic plaque, macrophage infiltration, and vasoconstrictor responses in the aortic arch. Another study [43] found more severe lung dysfunction in mice exposed for 8 months to PM_{2.5} of 16.8 $\mu\text{g}/\text{m}^3$ when compared to animals exposed to PM_{2.5} of 2.9 $\mu\text{g}/\text{m}^3$.

Several underlying biological mechanisms have been investigated for the damaging effects of PM_{2.5} on organ systems, especially on the respiratory and cardiovascular system [47–50]. The first is the direct pathway. Ultrafine particles directly translocate into the bloodstream and into specific organs, which aggravate the local oxidative stress and inflammation, causing the atherosclerotic plaque instability, and ultimately induce the cardiotoxicity effects and increase the risk of congestive heart failure, arrhythmias, and cardiovascular mortality [47–49]. Another pathway may increase oxidative stress and activate inflammation. The free radicals and organic components of PM_{2.5} can generate a rich milieu of inflammatory mediators and induce free radical production to oxidize lung cells, which directly causes cell injury in the lungs [51] and may indirectly release into the blood or systemic circulation, leading to cardiovascular and pulmonary disease and even death [50,52].

We also found that PM_{2.5} had larger effects on mortality in the urban area (Brisbane) when compared to statewide. In our study, the elderly inhabitants in Brisbane displayed a higher increase in death relative to statewide rates (4.92%, 95% CI 3.46%–6.61%; $p < 0.01$, versus 1.21%, 95% CI 0.06%–1.92%; $p < 0.01$). One possible explanation is the consistently higher concentrations of PM_{2.5} found in Brisbane (with an annual average of 6.0 $\mu\text{g}/\text{m}^3$) compared to Queensland (with an annual average of 3.63 $\mu\text{g}/\text{m}^3$). Furthermore, chemical and physical particle compositional differences in rural and urban areas also show different health effects on mortality [35,53]. Increasing evidence suggests that observed rural-urban disparities in population density could result in differences in PM_{2.5}-associated mortality rates [54]. In our study, compared with the rest of Queensland, approximately half of the overall population (44.9% based on Census 2016 data) resides in Brisbane, resulting in more widespread exposure to PM_{2.5} than in rural areas (S2 Fig and S3 Fig).

Growing evidence has shown that the elderly are at a higher risk of total mortality attributable to particulate matter [42,55]. Contrary to these findings, however, our study found that young people (below the age of 65) in Queensland experienced higher risks comparatively (5.76%, 95% CI 4.29%–7.25%; $p < 0.01$, versus 1.21%, 95% CI 0.06%–1.92%; $p < 0.01$). In Brisbane, those over 65 had a higher risk of mortality associated with PM_{2.5} in comparison with people below 65. This may be explained by differential exposure and physical activity between urban and rural residents, which may vary by age [56]. Compared with older adults, young people in rural areas may have higher rates of outdoor physical activity, which may lead to greater air pollution exposure [57]. With regards to sex sub-analysis, in our study, females in Brisbane experienced a greater risk than females in Queensland. We found that females in our study had higher PM_{2.5}-attributable mortality than the male population in both Brisbane and statewide. Even though an inverse relationship between all-cause mortality and PM_{2.5} exposure among female farmers was found in an American study [58], it is noted that there is a significant difference in individual-level behaviors between urban and rural residents, such as physical activity and smoking [59].

Our study has several strengths. To the best of our knowledge, no other studies have comprehensively explored the link between long-term exposure to PM_{2.5} and cause-specific mortality in Queensland when controlling for unmeasured confounding by design. Our study is based on 7 categories of disease-specific mortality, with a relevantly long study period (16 years). Additionally, we employed a variant of DID approach to explore the association between long-term exposure and mortality. Our results have provided compelling evidence for an association between long-term exposure to PM_{2.5} and mortality at levels below the current WHO air quality standard (10 $\mu\text{g}/\text{m}^3$ of annual average PM_{2.5}). Finally, we investigated the PM_{2.5}-attributable mortality in the highly populated metropolis and found more severe risks on cause-specific mortality in Brisbane.

There are also some limitations to this study. We assumed that no predictors other than seasonal temperature exhibit different spatial-temporal variations in relation to PM_{2.5} exposure. However, there are other potential spatial and temporal confounders that vary by periods across the study areas and correlate with the PM_{2.5} exposure, such as employment rate [2,60] and influenza epidemic [15]. Furthermore, even though the DID study design may eliminate most unmeasured confounders, these factors held as ideal assume that confounders such as population, SEIFA, and some other unmeasurable factors like behavior habits in one area maintained unchanged over the study period. Additionally, our study was unable to measure individual-level exposure and potentially introduced ecological bias because the study was conducted on a population-level scale. Because the assessment of the environmental exposures was based on individual zip code, errors in geocoding and invariable yearly exposure in every postal code for all residents may lead to potential exposure misclassification. Moreover, we

cannot estimate the association between PM_{2.5} and natural-cause mortality because of limited data availability. Furthermore, the basic population size and social-economic data in our study were based on Census 2016, which is likely to change over time.

This study provides evidence that long-term exposure to PM_{2.5}, even at low levels well below the current WHO air quality standard, is associated with non-accidental, cardiovascular, and respiratory mortality in Queensland and Brisbane, by using a variant of DID approach to control the unmeasured confounding. Even though the explanation of the DID approach relies on several assumptions that are theoretical and, to some extent, unprovable, the findings are important for scientific understanding of the health effects of air pollution and to inform policy makers.

Supporting information

S1 STROBE Checklist. STROBE, Strengthening the Reporting of Observational Studies in Epidemiology.

(DOC)

S1 Table. Environmental and mortality data from 1998 to 2013. Temperatures are presented as mean (SD); registered deaths: the total registered death in Queensland; standardized death rate (‰) uses the registered death count (column 3/column 2) to divide the population. Study Death: the death count included in this study. PM_{2.5}, fine particulate matter (particulate matter with a diameter of <2.5 μm); SD, standard deviation

(DOCX)

S2 Table. The pooled effects of PM_{2.5}-mortality associations for different death types by using a random effect meta-analysis. Total mortality includes 7 kinds of classification of diseases (ICD-10: F00–F99, G00–G99, I00–I99, J00–J99, K00–K93, N00–N99, V01–Y98). Non-accidental includes all above diseases except for V01–Y98. Cardiovascular (ICD-9: 390–459, ICD-10: I00–I99); respiratory causes (ICD-9: 460–519, ICD-10: J00–J99). PM_{2.5}, fine particulate matter (particulate matter with a diameter of <2.5 μm)

(DOCX)

S3 Table. The effect modification of PM_{2.5} on mortality by age group in Queensland and Brisbane. The effect modification by age groups was tested with the offset term of age-specific person-years. Data are presented as the percent increase in death (95% CI). Total mortality includes 7 kinds of classification of diseases mortality (ICD-10: F00–F99, G00–G99, I00–I99, J00–J99, K00–K93, N00–N99, V01–Y98). Non-accidental causes include all the above diseases mortality except for V01–Y98. Cardiovascular deaths (ICD-9: 390–459, ICD-10: I00–I99); respiratory causes (ICD-9: 460–519, ICD-10: J00–J99). PM_{2.5}, fine particulate matter (particulate matter with a diameter of <2.5 μm)

(DOCX)

S4 Table. Assessing the robustness of natural splines with different degrees for the summer and winter temperature in Queensland. Total mortality includes 7 kinds of classification of diseases (ICD-10: F00–F99, G00–G99, I00–I99, J00–J99, K00–K93, N00–N99, V01–Y98). Non-accidental includes all above diseases except for V01–Y98. Cardiovascular (ICD-9: 390–459, ICD-10: I00–I99); respiratory causes (ICD-9: 460–519, ICD-10: J00–J99). PM_{2.5}, fine particulate matter (particulate matter with a diameter of <2.5 μm)

(DOCX)

S1 Fig. The annual average PM_{2.5} concentrations in Brisbane during 1998–2013. PM_{2.5}, fine particulate matter (particulate matter with a diameter of <2.5 μm). *The base map was*

obtained from Australian Statistical Geography Standard (ASGS), <https://www.abs.gov.au/websitedbs/d3310114.nsf/home/digital+boundaries>, CC BY 2.5 AU.

(TIF)

S2 Fig. The population density in Queensland based on 2016 census. *The base map was obtained from Australian Statistical Geography Standard (ASGS), <https://www.abs.gov.au/websitedbs/d3310114.nsf/home/digital+boundaries>, CC BY 2.5 AU.*

(TIF)

S3 Fig. The population density in Brisbane based on 2016 census. *The base map was obtained from Australian Statistical Geography Standard (ASGS), <https://www.abs.gov.au/websitedbs/d3310114.nsf/home/digital+boundaries>, CC BY 2.5 AU.*

(TIF)

Acknowledgments

We thank Andrew Rosenberg and Jennifer Stowell from Gangarosa Department of Environmental Health Emory University for assisting in proofreading the manuscript.

Author Contributions

Conceptualization: Yuming Guo, Shanshan Li.

Data curation: Yuming Guo, Shanshan Li.

Formal analysis: Wenhua Yu, Yuming Guo.

Funding acquisition: Yuming Guo, Shanshan Li.

Investigation: Yuming Guo.

Methodology: Yuming Guo, Shanshan Li.

Project administration: Yuming Guo, Shanshan Li.

Resources: Yuming Guo, Shanshan Li.

Software: Wenhua Yu, Yuming Guo.

Supervision: Yuming Guo, Liuhua Shi, Shanshan Li.

Validation: Yuming Guo, Liuhua Shi, Shanshan Li.

Visualization: Yuming Guo.

Writing – original draft: Wenhua Yu.

Writing – review & editing: Wenhua Yu, Yuming Guo, Liuhua Shi, Shanshan Li.

References

1. Cohen AJ, Brauer M, Burnett R, Anderson HR, Frostad J, Estep K, et al. Estimates and 25-year trends of the global burden of disease attributable to ambient air pollution: an analysis of data from the Global Burden of Diseases Study 2015. *Lancet*. 2017; 389(10082): 1907–18. [https://doi.org/10.1016/S0140-6736\(17\)30505-6](https://doi.org/10.1016/S0140-6736(17)30505-6) PMID: 28408086
2. Wang Y, Kloog I, Coull BA, Kosheleva A, Zanobetti A, Schwartz JD. Estimating Causal Effects of Long-Term PM_{2.5} Exposure on Mortality in New Jersey. *Environ Health Perspect*. 2016; 124(8): 1182–8. <https://doi.org/10.1289/ehp.1409671> PMID: 27082965
3. Makar M, Antonelli J, Di Q, Cutler D, Schwartz J, Dominici F. Estimating the Causal Effect of Low Levels of Fine Particulate Matter on Hospitalization. *Epidemiology*. 2017; 28(5): 627–34. <https://doi.org/10.1097/EDE.0000000000000690> PMID: 28768298

4. Schwartz J, Bind M-A, Koutrakis P. Estimating causal effects of local air pollution on daily deaths: effect of low levels. *Environ Health Perspect*. 2016; 125(1): 23–9. <https://doi.org/10.1289/EHP232> PMID: 27203595
5. HEI Health Review Committee. Causal inference methods for estimating long-term health effects of air quality regulations: Health Effects Institute; 2016 [cited 2019 Apr 17]. Available from: <https://www.healtheffects.org/publication/causal-inference-methods-estimating-long-term-health-effects-air-quality-regulations>
6. Schwartz JD, Wang Y, Kloog I, Yitshak-Sade Ma, Dominici F, Zanobetti A. Estimating the effects of PM 2.5 on life expectancy using causal modeling methods. *Environ Health Perspect*. 2018; 126(12): 127002. <https://doi.org/10.1289/EHP3130> PMID: 30675798
7. Rubin DB. The design versus the analysis of observational studies for causal effects: parallels with the design of randomized trials. *Stat Med*. 2007; 26(1): 20–36. <https://doi.org/10.1002/sim.2739> PMID: 17072897
8. Wu X, Mealli F, Kioumourtoglou M-A, Dominici F, Braun D. Matching on Generalized Propensity Scores with Continuous Exposures. arXiv:1812.06575 [Preprint]. 2018 [cited 2019 Jul 15]. Available from: <https://arxiv.org/abs/1812.06575>
9. Wang Y, Lee M, Liu P, Shi L, Yu Z, Awad YA, et al. Doubly robust additive hazards models to estimate effects of a continuous exposure on survival. *Epidemiology*. 2017; 28(6): 771. <https://doi.org/10.1097/EDE.0000000000000742> PMID: 28832358
10. Garrido MM, Kelley AS, Paris J, Roza K, Meier DE, Morrison RS, et al. Methods for constructing and assessing propensity scores. *Health Serv Res*. 2014; 49(5): 1701–20. <https://doi.org/10.1111/1475-6773.12182> PMID: 24779867
11. Imbens GW, Lemieux T. Regression discontinuity designs: A guide to practice. *J Econom*. 2008; 142(2): 615–35. <https://doi.org/10.1016/j.jeconom.2007.05.001>
12. Ebenstein A, Fan M, Greenstone M, He G, Zhou M. New evidence on the impact of sustained exposure to air pollution on life expectancy from China's Huai River Policy. *Proc Natl Acad Sci U S A*. 2017; 114(39): 10384–9. <https://doi.org/10.1073/pnas.1616784114> PMID: 28893980
13. Lee DS. Randomized experiments from non-random selection in US House elections. *J Econom*. 2008; 142(2): 675–97. <https://doi.org/10.1016/j.jeconom.2007.05.004>
14. Card D, Krueger AB. Minimum wages and employment: A case study of the fast food industry in New Jersey and Pennsylvania. National Bureau of Economic Research. 1993. <https://doi.org/10.3386/w4509>
15. Renzi M, Forastiere F, Schwartz J, Davoli M, Michelozzi P, Stafoggia M. Long-Term PM10 Exposure and Cause-Specific Mortality in the Latium Region (Italy): A Difference-in-Differences Approach. *Environ Health Perspect*. 2019; 127(6): 67004. <https://doi.org/10.1289/EHP3759> PMID: 31166133
16. Leogrande S, Alessandrini ER, Stafoggia M, Morabito A, Noci A, Ancona C, et al. Industrial air pollution and mortality in the Taranto area, Southern Italy: A difference-in-differences approach. *Environ Int*. 2019; 132: 105030. <https://doi.org/10.1016/j.envint.2019.105030> PMID: 31398654
17. Corrigan AE, Becker MM, Neas LM, Cascio WE, Rappold AG. Fine particulate matters: The impact of air quality standards on cardiovascular mortality. *Environ Res*. 2018; 161: 364–9. <https://doi.org/10.1016/j.envres.2017.11.025> PMID: 29195185
18. Kioumourtoglou M-A, Schwartz J, James P, Dominici F, Zanobetti A. PM2. 5 and mortality in 207 US cities: modification by temperature and city characteristics. *Epidemiology*. 2016; 27(2): 221. <https://doi.org/10.1097/EDE.0000000000000422> PMID: 26600257
19. Xue T, Zhu T, Zheng Y, Liu J, Li X, Zhang Q. Change in the number of PM2. 5-attributed deaths in China from 2000 to 2010: Comparison between estimations from census-based epidemiology and pre-established exposure-response functions. *Environ Int*. 2019; 129: 430–7. <https://doi.org/10.1016/j.envint.2019.05.067> PMID: 31154145
20. Vodonos A, Awad YA, Schwartz J. The concentration-response between long-term PM2. 5 exposure and mortality: A meta-regression approach. *Environ Res*. 2018; 166: 677–89. <https://doi.org/10.1016/j.envres.2018.06.021> PMID: 30077140
21. Xu Z, FitzGerald G, Guo Y, Jalaludin B, Tong S. Assessing heatwave impacts on cause-specific emergency department visits in urban and rural communities of Queensland, Australia. *Environ Res*. 2019; 168: 414–9. <https://doi.org/10.1016/j.envres.2018.10.013> PMID: 30388498
22. Van Donkelaar A, Martin RV, Brauer M, Hsu NC, Kahn RA, Levy RC, et al. Global estimates of fine particulate matter using a combined geophysical-statistical method with information from satellites, models, and monitors. *Environ Sci Technol*. 2016; 50(7): 3762–72. <https://doi.org/10.1021/acs.est.5b05833> PMID: 26953851

23. Shi L, Kloog I, Zanobetti A, Liu P, Schwartz JD. Impacts of temperature and its variability on mortality in New England. *Nat Clim Chang* 2015; 5(11): 988–91. <https://doi.org/10.1038/nclimate2704> PMID: 26640524
24. Armstrong BG, Gasparrini A, Tobias A. Conditional Poisson models: a flexible alternative to conditional logistic case cross-over analysis. *BMC Med Res Methodol*. 2014; 14(1): 122. <https://doi.org/10.1186/1471-2288-14-122> PMID: 25417555
25. Barrowman MA, Peek N, Lambie M, Martin GP, Sperrin M. How unmeasured confounding in a competing risks setting can affect treatment effect estimates in observational studies. *BMC Med Res Methodol*. 2019; 19(1): 166. <https://doi.org/10.1186/s12874-019-0808-7> PMID: 31366331
26. Fewell Z, Davey Smith G, Sterne JA. The impact of residual and unmeasured confounding in epidemiologic studies: a simulation study. *Am J Epidemiol*. 2007; 166(6): 646–55. <https://doi.org/10.1093/aje/kwm165> PMID: 17615092
27. Apte JS, Marshall JD, Cohen AJ, Brauer M. Addressing global mortality from ambient PM_{2.5}. *Environ Sci Technol*. 2015; 49(13): 8057–66. <https://doi.org/10.1021/acs.est.5b01236> PMID: 26077815
28. Burnett RT, Pope CA III, Ezzati M, Olives C, Lim SS, Mehta S, et al. An integrated risk function for estimating the global burden of disease attributable to ambient fine particulate matter exposure. *Environ Health Perspect*. 2014; 122(4): 397–403. <https://doi.org/10.1289/ehp.1307049> PMID: 24518036
29. Liu C, Chen R, Sera F, Vicedo-Cabrera AM, Guo Y, Tong S, et al. Ambient particulate air pollution and daily mortality in 652 cities. *N Engl J Med*. 2019; 381(8): 705–15. <https://doi.org/10.1056/NEJMoa1817364> PMID: 31433918
30. Mills NL, Törnqvist H, Gonzalez MC, Vink E, Robinson SD, Söderberg S, et al. Ischemic and thrombotic effects of dilute diesel-exhaust inhalation in men with coronary heart disease. *N Engl J Med*. 2007; 357(11): 1075–82. <https://doi.org/10.1056/NEJMoa066314> PMID: 17855668
31. Chuang H-C, Ho K-F, Lin L-Y, Chang T-Y, Hong G-B, Ma C-M, et al. Long-term indoor air conditioner filtration and cardiovascular health: A randomized crossover intervention study. *Environ Int*. 2017; 106: 91–6. <https://doi.org/10.1016/j.envint.2017.06.008> PMID: 28624750
32. Streeter AJ, Lin NX, Crathorne L, Haasova M, Hyde C, Melzer D, et al. Adjusting for unmeasured confounding in nonrandomized longitudinal studies: a methodological review. *J Clin Epidemiol*. 2017; 87: 23–34. <https://doi.org/10.1016/j.jclinepi.2017.04.022> PMID: 28460857
33. Callaway B, Sant'Anna PH. Difference-in-differences with multiple time periods. arXiv: 1803.09015[Preprint]. 2018 [cited 2019 Jul 19]. Available from: <https://arxiv.org/abs/1803.09015>.
34. French B, Heagerty PJ. Analysis of longitudinal data to evaluate a policy change. *Stat Med*. 2008; 27(24): 5005–25. <https://doi.org/10.1002/sim.3340> PMID: 18618416
35. Valavanidis A, Fiotakis K, Vlachogianni T. Airborne particulate matter and human health: toxicological assessment and importance of size and composition of particles for oxidative damage and carcinogenic mechanisms. *J Environ Sci Health C Environ Carcinog Ecotoxicol Rev* 2008; 26(4): 339–62. <https://doi.org/10.1080/10590500802494538> PMID: 19034792
36. Lepeule J, Laden F, Dockery D, Schwartz J. Chronic exposure to fine particles and mortality: an extended follow-up of the Harvard Six Cities study from 1974 to 2009. *Environ Health Perspect*. 2012; 120(7): 965–70. <https://doi.org/10.1289/ehp.1104660> PMID: 22456598
37. Beelen R, Raaschou-Nielsen O, Stafoggia M, Andersen ZJ, Weinmayr G, Hoffmann B, et al. Effects of long-term exposure to air pollution on natural-cause mortality: an analysis of 22 European cohorts within the multicentre ESCAPE project. *Lancet*. 2014; 383(9919): 785–95. [https://doi.org/10.1016/S0140-6736\(13\)62158-3](https://doi.org/10.1016/S0140-6736(13)62158-3) PMID: 24332274
38. Dehbi H-M, Blangiardo M, Gulliver J, Fecht D, de Hoogh K, Al-Kanaani Z, et al. Air pollution and cardiovascular mortality with over 25 years follow-up: A combined analysis of two British cohorts. *Environ Int*. 2017; 99: 275–81. <https://doi.org/10.1016/j.envint.2016.12.004> PMID: 27939045
39. Wang Y, Shi L, Lee M, Liu P, Di Q, Zanobetti A, et al. Long-term exposure to PM_{2.5} and mortality among older adults in the southeastern US. *Epidemiology*. 2017; 28(2): 207. <https://doi.org/10.1097/EDE.0000000000000614> PMID: 28005571
40. Pope CA III, Lefler JS, Ezzati M, Higbee JD, Marshall JD, Kim S-Y, et al. Mortality risk and fine particulate air pollution in a large, representative cohort of US adults. *Environ Health Perspect*. 2019; 127(7): 077007. <https://doi.org/10.1289/EHP4438> PMID: 31339350
41. Pope CA III, Burnett RT, Turner MC, Cohen A, Krewski D, Jerrett M, et al. Lung cancer and cardiovascular disease mortality associated with ambient air pollution and cigarette smoke: shape of the exposure-response relationships. *Environ Health Perspect*. 2011; 119(11): 1616–21. <https://doi.org/10.1289/ehp.1103639> PMID: 21768054

42. Shi L, Zanobetti A, Kloog I, Coull BA, Koutrakis P, Melly SJ, et al. Low-concentration PM_{2.5} and mortality: estimating acute and chronic effects in a population-based study. *Environ Health Perspect*. 2015; 124(1): 46–52. <https://doi.org/10.1289/ehp.1409111> PMID: 26038801
43. Mauad T, Rivero DHRF, de Oliveira RC, de Faria Coimbra Lichtenfels AJ, Guimarães ET, de Andre PA, et al. Chronic exposure to ambient levels of urban particles affects mouse lung development. *Am J Respir Crit Care Med*. 2008; 178(7): 721–8. <https://doi.org/10.1164/rccm.200803-436OC> PMID: 18596224
44. Soares SRC, Carvalho-Oliveira R, Ramos-Sanchez E, Catanozi S, da Silva LFF, Mauad T, et al. Air pollution and antibodies against modified lipoproteins are associated with atherosclerosis and vascular remodeling in hyperlipemic mice. *Atherosclerosis*. 2009; 207(2): 368–73. <https://doi.org/10.1016/j.atherosclerosis.2009.04.041> PMID: 19486979
45. Sun Q, Wang A, Jin X, Natanzon A, Duquaine D, Brook RD, et al. Long-term air pollution exposure and acceleration of atherosclerosis and vascular inflammation in an animal model. *JAMA*. 2005; 294(23): 3003–10. <https://doi.org/10.1001/jama.294.23.3003> PMID: 16414948
46. Sun Q, Yue P, Kirk RI, Wang A, Moatti D, Jin X, et al. Ambient air particulate matter exposure and tissue factor expression in atherosclerosis. *Inhal Toxicol*. 2008; 20(2): 127–37. <https://doi.org/10.1080/08958370701821482> PMID: 18236227
47. Nemmar A, Hoet PM, Vanquickenborne B, Dinsdale D, Thomeer M, Hoylaerts M, et al. Passage of inhaled particles into the blood circulation in humans. *Circulation*. 2002; 105(4): 411–4. <https://doi.org/10.1161/hc0402.104118> PMID: 11815420
48. Furuyama A, Kanno S, Kobayashi T, Hirano S. Extrapulmonary translocation of intratracheally instilled fine and ultrafine particles via direct and alveolar macrophage-associated routes. *Arch Toxicol*. 2009; 83(5): 429–37. <https://doi.org/10.1007/s00204-008-0371-1> PMID: 18953527
49. Du Y, Xu X, Chu M, Guo Y, Wang J. Air particulate matter and cardiovascular disease: the epidemiological, biomedical and clinical evidence. *J Thorac Dis*. 2016; 8(1): E8. <https://doi.org/10.3978/j.issn.2072-1439.2015.11.37> PMID: 26904258
50. Xing Y-F, Xu Y-H, Shi M-H, Lian Y-X. The impact of PM_{2.5} on the human respiratory system. *J Thorac Dis*. 2016; 8(1): E69. <https://doi.org/10.3978/j.issn.2072-1439.2016.01.19> PMID: 26904255
51. Mills NL, Donaldson K, Hadoke PW, Boon NA, MacNee W, Cassee FR, et al. Adverse cardiovascular effects of air pollution. *Nat Rev Cardiol*. 2009; 6(1): 36. <https://doi.org/10.1038/ncpcardio1399> PMID: 19029991
52. Landrigan PJ, Fuller R, Acosta NJ, Adeyi O, Arnold R, Baldé AB, et al. The Lancet Commission on pollution and health. *Lancet*. 2018; 391(10119): 462–512. [https://doi.org/10.1016/S0140-6736\(17\)32345-0](https://doi.org/10.1016/S0140-6736(17)32345-0) PMID: 29056410
53. Viana M, Kuhlbusch T, Querol X, Alastuey A, Harrison R, Hopke P, et al. Source apportionment of particulate matter in Europe: a review of methods and results. *J Aerosol Sci*. 2008; 39(10): 827–49. <https://doi.org/10.1016/j.jaerosci.2008.05.007>
54. Garcia CA, Yap P-S, Park H-Y, Weller BL. Association of long-term PM_{2.5} exposure with mortality using different air pollution exposure models: impacts in rural and urban California. *Int J Environ Health Res*. 2016; 26(2): 145–57. <https://doi.org/10.1080/09603123.2015.1061113> PMID: 26184093
55. Simoni M, Baldacci S, Maio S, Cerrai S, Sarno G, Viegi G. Adverse effects of outdoor pollution in the elderly. *J Thorac Dis*. 2015; 7(1): 34. <https://doi.org/10.3978/j.issn.2072-1439.2014.12.10> PMID: 25694816
56. Roberts JD, Voss JD, Knight B. The association of ambient air pollution and physical inactivity in the United States. *PLoS ONE*. 2014; 9(3). <https://doi.org/10.1371/journal.pone.0090143> PMID: 24598907
57. Yu W, Sulistyoningrum DC, Gasevic D, Xu R, Julia M, Murni IK, et al. Long-term exposure to PM_{2.5} and fasting plasma glucose in non-diabetic adolescents in Yogyakarta, Indonesia. *Environ Pollut*. 2020; 257: 113423. <https://doi.org/10.1016/j.envpol.2019.113423> PMID: 31677868
58. Weichenthal S, Villeneuve PJ, Burnett RT, van Donkelaar A, Martin RV, Jones RR, et al. Long-term exposure to fine particulate matter: association with nonaccidental and cardiovascular mortality in the agricultural health study cohort. *Environ Health Perspect*. 2014; 122(6): 609–15. <https://doi.org/10.1289/ehp.1307277> PMID: 24633320
59. Trivedi T, Liu J, Probst JC, Martin AB. The metabolic syndrome: are rural residents at increased risk? *J Rural Health*. 2013; 29(2): 188–97. <https://doi.org/10.1111/j.1748-0361.2012.00422.x> PMID: 23551649
60. Branis M, Linhartova M. Association between unemployment, income, education level, population size and air pollution in Czech cities: evidence for environmental inequality? A pilot national scale analysis. *Health Place*. 2012; 18(5): 1110–4. <https://doi.org/10.1016/j.healthplace.2012.04.011> PMID: 22632903