



Research Article

The Influence of Drug Properties and Ontogeny of Transporters on Pediatric Renal Clearance through Glomerular Filtration and Active Secretion: a Simulation-Based Study

Sînziana Cristea,¹ Elke Henriëtte Josephina Krekels,¹ Amin Rostami-Hodjegan,^{2,3}
Karel Allegaert,^{4,5,6} and Catherijne Annette Jantine Knibbe^{1,7,8}

Received 3 March 2020; accepted 27 May 2020; published online 21 June 2020

Abstract. Glomerular filtration (GF) and active tubular secretion (ATS) contribute to renal drug elimination, with the latter remaining understudied across the pediatric age range. Therefore, we systematically analyzed the influence of transporter ontogeny on the relative contribution of GF and ATS to renal clearance CL_R for drugs with different properties in children. A physiology-based model for CL_R in adults was extrapolated to the pediatric population by including maturation functions for the system-specific parameters. This model was used to predict GF and ATS for hypothetical drugs with a range of drug-specific properties, including transporter-mediated intrinsic clearance ($CL_{int,T}$) values, that are substrates for renal secretion transporters with different ontogeny patterns. To assess the impact of transporter ontogeny on ATS and total CL_R , a percentage prediction difference (%PD) was calculated between the predicted CL_R in the presence and absence of transporter ontogeny. The contribution of ATS to CL_R ranges between 41 and 90% in children depending on fraction unbound and $CL_{int,T}$ values. If ontogeny of renal transporters is <0.2 of adult values, CL_R predictions are unacceptable (%PD $>50\%$) for the majority of drugs regardless of the pediatric age. Ignoring ontogeny patterns of secretion transporters increasing with age in children younger than 2 years results in CL_R predictions that are not systematically acceptable for all hypothetical drugs (%PD $>50\%$ for some drugs). This analysis identified for what drug-specific properties and at what ages the contribution of ATS on total pediatric CL_R cannot be ignored. Drugs with these properties may be sensitive *in vivo* probes to investigate transporter ontogeny.

KEY WORDS: active tubular secretion; glomerular filtration; ontogeny.

Electronic supplementary material The online version of this article (<https://doi.org/10.1208/s12248-020-00468-7>) contains supplementary material, which is available to authorized users.

¹ Division of Systems Biomedicine and Pharmacology, Leiden Academic Center for Drug Research, Leiden University, Leiden, The Netherlands.

² Simcyp Limited, Sheffield, UK.

³ Centre for Applied Pharmacokinetic Research (CAPKR), University of Manchester, Manchester, UK.

⁴ Clinical Pharmacy, Erasmus Medical Center, Rotterdam, The Netherlands.

⁵ Department of Development and Regeneration, KU Leuven, Leuven, Belgium.

⁶ Department of Pharmaceutical and Pharmacological Sciences, KU Leuven, Leuven, Belgium.

⁷ Department of Clinical Pharmacy, St. Antonius Hospital, Nieuwegein, The Netherlands.

⁸ To whom correspondence should be addressed. (e-mail: c.knibbe@antoniuziekenhuis.nl)

INTRODUCTION

Between 21 and 31% of marketed drugs are primarily renally cleared [1]. Processes underlying renal clearance (CL_R) include glomerular filtration (GF), active tubular secretion (ATS), reabsorption, and renal metabolism. Maturation of GF has been extensively studied and quantified in children. However, less is known about the impact of maturation in the other process on CL_R , partly due to the lack of specific biomarkers to distinguish between the activity of different transporters and to the overlap in specificity of transporters for different substrates. Together with GF, ATS is one of the major contributing pathways for CL_R ; ontogeny of ATS is therefore the focus of the current analysis.

ATS involves different transporter systems located on the basolateral and apical sides of the proximal tubule cells of the kidney. These systems enable the efflux of drugs from the blood into the tubule where pre-urine is formed [2]. The expression of renal transporters was found to change in children [3]. However, these findings are based on a limited

number of postmortem kidney samples collected throughout the pediatric age range [3]. Furthermore, there is limited information about the relationship between transporter-specific protein expression and transporter activity [4] or whether this remains constant with age. Finally, the extent to which transporter activity impacts ATS and subsequently total CL_R has not been quantified yet for the pediatric population.

Physiology-based pharmacokinetic (PBPK) models [5] integrate prior knowledge on drug and system properties. This configuration can be leveraged to perform extrapolations to unstudied scenarios. For example, PBPK models can be back-extrapolated to the pediatric population by taking into account the developmental changes in system parameters and be further used to make predictions in this special population for drugs that have not been studied in children yet. Previously, our group has used PBPK approaches in an innovative manner to systematically assess in which situations empirical scaling methods (i.e., allometric scaling, linear scaling) could be used to accurately scale plasma clearance of drugs that were eliminated by hepatic metabolism or GF for a broad range of hypothetical drugs [6, 7]. However, due to limited information on the ontogeny of renal transporters, the accuracy of clearance scaling for drugs eliminated through ATS could not be addressed.

Using a similar PBPK-based modeling approach as the one described above, we performed a systematic analysis to investigate the impact of the ontogeny of renal secretion transporters in relation with maturation of other physiological processes on the relative contribution of GF and ATS to CL_R as well as on the total CL_R . This assessment was performed throughout the pediatric age range for a large number of hypothetical drugs with different properties covering a realistic parameter space. Moreover, to assess the impact of renal transporter ontogeny on CL_R throughout the pediatric population, we compared CL_R predictions obtained with and without including ontogeny patterns for renal transporters.

METHODS

Expansion of a PBPK Framework to Predict CL_R in Children

For this simulation study, a PBPK-based framework was developed analogue to the one published by Calvier *et al.* for plasma clearance by liver metabolism, and GF [6]. R v3.5.0 under R studio 1.1.38 was used to build the framework and to perform the systematic simulations.

An existing PBPK model for predicting CL_R in adults [5] was extrapolated to the pediatric population by incorporating published maturation functions for the system-specific parameters in the model. The model assumes a serial arrangement of the two major contributing pathways, GF and ATS (Eq. 1):

$$CL_R = CL_{GF} + CL_{ATS} = f_u \times GFR + \frac{(Q_R - GFR) \times f_u \times CL_{int,sec}}{Q_R + f_u \times \frac{CL_{int,sec}}{BP}} \quad (1)$$

where CL_{GF} and CL_{ATS} represent the clearance by GF and ATS, respectively, and f_u is the fraction unbound; GFR is the

glomerular filtration rate; Q_R is renal blood flow; BP is the blood to plasma ratio of the drug; and $CL_{int,sec}$ is the intrinsic secretion clearance of the active transporters. This model assumes that only the unbound drug in plasma is available for elimination, whereas drugs bound to plasma proteins or accumulated in erythrocytes are considered unavailable for elimination.

Maturation functions from literature were included for plasma concentrations of human serum albumin (HSA) and α -acid glycoprotein (AGP) [8], GFR [9], Q_R [10], hematocrit [10], kidney weight [10], and relative ontogeny for transporter-mediated intrinsic clearance (ont_T). The functions for ont_T described either hypothetical values or published functions for individual [3] or aggregated [11, 12] transporter systems.

The concentrations of the two plasma proteins impact the f_u of the drug in plasma and the hematocrit levels impact BP. $CL_{int,sec}$ is obtained as the product of transporter-mediated intrinsic clearance ($CL_{int,T}$), ont_T , the number of proximal tubule cells per gram kidney (PTCPGK), and kidney weight (KW), as shown in Eq. (2):

$$CL_{int,sec} = CL_{int,T} \times ont_T \times PTCPGK \times KW \quad (2)$$

$CL_{int,T}$ is the resultant of expression and activity of renal secretion transporters. While maturation functions for KW and ont_T were included in the pediatric PBPK model for CL_R , the number of proximal tubule cells per gram kidney was assumed to have the same value in children as in adults (60×10^6 [6] cells), as no information was available about its development. KW (g) was calculated across the pediatric age by multiplying the kidney volume (L) with a kidney density of 1050 g/L as obtained from Simcyp v18. All maturation functions and parameter values on which the PBPK model for CL_R is dependent can be found in Table 1. These maturation functions are depicted in Fig. 1a.

ont_T is included in Eq. (2) as a fraction relative to the adult $CL_{int,T}$. In this way, pediatric $CL_{int,T}$ [1] remained fixed at the adult $CL_{int,T}$ levels ($ont_T = 1$, meaning ontogeny is absent), [2] was a constant fraction of the adult $CL_{int,T}$ throughout the entire pediatric age range, or [3] increased with age as flexible fraction of adult $CL_{int,T}$ according to published ontogeny functions [3]. For the relative ontogeny fractions that remained constant throughout the pediatric age, the following values were used: 0.05, 0.2, 0.5, and 0.7. Ontogeny functions that increased with age were taken from literature, including 4 functions for individual transporters [3] (i.e., OAT1, OAT3, OCT2, and Pgp) and 2 functions for aggregated transporter systems [11, 12]. All the relative ontogeny functions for $CL_{int,T}$ that increased with age, and the details about their implementation in the model are presented in Table 1. In addition, the published ontogeny functions that characterize relative ontogeny for individual (i.e., OAT1, OAT3, OCT2, and Pgp) and aggregated (i.e., Hayton *et al.*, DeWoskin *et al.*) transporters throughout the pediatric population relative to adult values are visualized in Fig. 1b.

The pediatric PBPK-based model was used to predict CL_R in typical virtual individuals. For this, patients with the following ages were selected: 1 day, 1, 3, and 6 months, and 1, 2, 5, and 15 years for pediatric individuals and 35 years for the

Table 1. Maturation functions used in Eqs. (1) and (2) for the extrapolation of system-specific and combined system-specific and drug-specific model parameters in the physiology-based pharmacokinetic (PBPK) model for renal clearance from typical adults to typical pediatric individuals

System-specific parameters for Eqs. (1) and (2) (abbreviation) (units)	Maturation functions included in the pediatric PBPK model for CL_R
Glomerular filtration rate (GFR) (mL/min)	$GFR = 112 \times \left(\frac{WT}{70}\right)^{0.63} \times \left(\frac{PMA^{3.3}}{PMA^{3.3} + 55.4^{3.3}}\right)$
Fraction unbound (f_u) (-)	$[HSA]_{ped/adult} = 1.1287 \times \ln(AGE) + 33.746$ $[AGP]_{ped/adult} = \frac{0.887 \times AGE^{0.38}}{8.89^{0.38} + AGE^{0.38}}$ $\rightarrow f_{u,ped} = \frac{1}{1 + \frac{(1 - f_{u,adult}) \times [P]_{ped}}{[P]_{adult} \times f_{u,adult}}}$
Renal blood flow (Q_R) (mL/min)	$CO = BSA \times (110 + 184 \times e^{-0.0378 \times AGE} - e^{-0.24477 \times AGE})$ $fr = \frac{fr_{males} + fr_{females}}{2}$ $fr_{males} = 4.53 + \left(14.63 \times \frac{AGE}{0.1888 + AGE}\right)$ $fr_{females} = 4.53 + \left(13 \times \frac{AGE^{1.15}}{0.188^{1.15} + AGE^{1.15}}\right)$ $\rightarrow Q_R = CO \times fr$
Intrinsic secretion CL ($CL_{int,sec}$) (mL/min)	$PTCPGK = 60 \text{ (adult value)}$ $KW = 1050 \times (4.214 \times WT^{0.823} + 4.456 \times WT^{0.795})/1000$ $\rightarrow CL_{int, sec} = ont_T \times CL_{int, T} \times PTCPGK \times KW$
Blood to plasma ratio (BP) (-)	$hemat = \frac{hemat_{male} + hemat_{female}}{2}$ $hemat_{male} = 53 - \left(\left(43 \times \frac{AGE^{1.12}}{0.05^{1.12} + AGE^{1.12}} \right) \times \left(1 + \left(-0.93 \times \frac{AGE^{0.25}}{0.10^{0.25} + AGE^{0.25}} \right) \right) \right)$ $hemat_{female} = 53 - \left(\left(37.4 \times \frac{AGE^{1.12}}{0.05^{1.12} + AGE^{1.12}} \right) \times \left(1 + \left(-0.80 \times \frac{AGE^{0.25}}{0.10^{0.25} + AGE^{0.25}} \right) \right) \right)$ $\rightarrow BP = 1 + hemat \times (f_u \times k_p - 1)$
Published ontogeny functions for renal transporters (ont_T) (-)	$ont_{p-gp} = \frac{PNA^{0.73}}{PNA^{0.73} + 4.02^{0.73}}$ $ont_{OAT_1} = \frac{PNA^{0.43}}{PNA^{0.43} + 19.71^{0.43}}$ $ont_{OAT_3} = \frac{PNA^{0.51}}{PNA^{0.51} + 30.70^{0.51}}$ $ont_{OCT_2} = \frac{PNA^1}{PNA^1 + 4.38^{0.51}}$ $*ont_{ATS_{Hayton}} = \frac{(1.08 \times weight^{1.04} \times e^{-0.185 \times age} + 1.83 \times weight^{1.04} \times (1 - e^{-0.185 \times age}))}{ont_{ATS_{Hayton}} \text{ (adult)}}$ $*ont_{ATS_{DeWoskin}} = \frac{20.3}{79.8}, \frac{14.9}{79.8}, \frac{31.3}{79.8}, \frac{46.5}{79.8}, \frac{44.2}{79.8}, \frac{66.5}{79.8}, \frac{73.15}{79.8}, \frac{73.15}{79.8}, \frac{79.8}{79.8}, \text{ at 1 day, 1 month, 3 months, 6 months, 1 year, 2 years, 5 years, 15 years, and adult, respectively}$

WT bodyweight (kg); *PMA* postmenstrual age (weeks); *HSA* human serum albumin (g/L); *AGP* α -acid glycoprotein (g/L); *P* plasma-binding protein (e.g. HSA or AGP (g/L)); *CO* cardiac output (mL/min); *hemat* hematocrit; *fr* fraction of cardiac output directed to renal artery; *BSA* body surface area (m²); *AGE* age in (days) for the maturation of (P) and in (years) for the fraction of cardiac output and hematocrit levels; *PTCPGK* proximal tubule cells per gram kidney ($\times 10^6$ cells); *KW* kidney weight (g); *ontT* transporters ontogeny relative to adult levels (-); *CL_{int,T}* transporter-mediated active clearance (mL/min); *k_p* blood-to-plasma partitioning coefficient of a drug; *PNA* postnatal age (weeks)

*Hayton *et al.* developed a continuous function using age in years and weight in kg, based on the data published by Rubin *et al.* [17]. The function covers the pediatric age range up to 12 years and values obtained at 12 years were considered mature and assigned to the typical 15-year-old and adult ($ont_{ATS_{Hayton}}(\text{adult})$)

*DeWoskin *et al.* collected literature data on tubular secretion rates and categorized it in different age groups, from neonates up to adults. For children older than 1 year and younger than 18 years, the average between the values published for children and adults was interpolated

adult. The demographics for the typical pediatric individuals required to obtain the maturation functions in the PBPK-based model were derived from the NHANES database [13], and the ones for the typical adult were derived from the

ICRP annals [14]. The demographic characteristics corresponding to these ages are given in Table 2.

For a systematic investigation of the drug-specific parameter space, hypothetical drugs with different properties

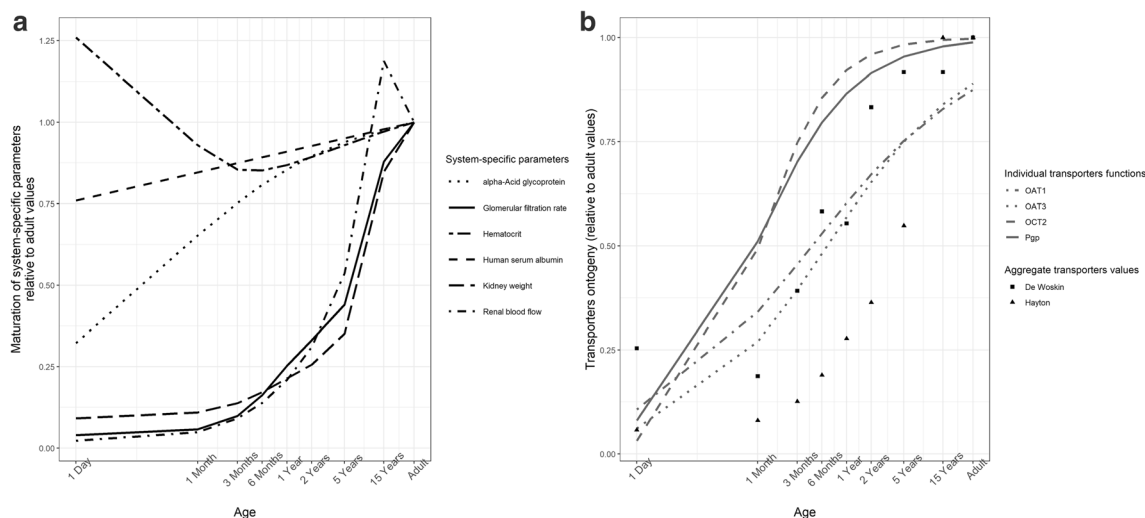


Fig. 1. Published functions illustrating **a** the maturation of system-specific parameters and **b** age-dependent ontogeny functions (ontT) for individual or aggregated transporter systems used with the transporter-mediated intrinsic clearance ($CL_{int,T}$) to obtain intrinsic secretion clearance ($CL_{int,sec}$). These functions were used to extend the PBPK model to the pediatric population according to the functions in Table 1

were generated, and their CL_R was predicted with the PBPK model for CL_R for all typical individuals. The hypothetical drugs were defined by four drug-specific properties for which ranges of realistic values were used as follows:

- 1) The drugs were assumed to bind exclusively to either HSA or AGP.
- 2) $f_{u,adult}$ values of 0.05, 0.15, 0.25, 0.35, 0.45, 0.55, 0.65, 0.75, 0.85, 0.95, and 1 were used for drugs binding to either HSA or AGP.
- 3) BP was obtained from hematocrit levels and Kp values in adults of 0, 1, 2, 3, and 4 (Table 1) [15].
- 4) For $CL_{int,T}$ 39 representative values were sampled within the range of 2 and 500 mL/min/mg protein. The selected range was based on $CL_{int,T}$ values obtained from published CL_R values in adults following retrograde calculation for 53 drugs that are renally excreted by ATS. The obtained $CL_{int,T}$ represents the affinity of the drug for different transporters together with the abundances of transporters. Details about the retrograde calculation of $CL_{int,T}$ are shown in the Supplement section S1: Retrograde-calculation of

$CL_{int,T}$ from adult CL_R values, and the obtained $CL_{int,T}$ values for these drugs in adults are displayed in Fig. S1.

Generating all possible combinations between the values given to the four drug properties yielded 3800 hypothetical drugs that were included in the current systematic analysis.

Contribution of GF and ATS to Pediatric CL_R for Drugs with Different Properties

The PBPK framework was used to simulate CL_R for the 3800 hypothetical drugs for each typical virtual individual. Simulations with a relative ontogeny fixed at adult levels ($ont_T=1$) were used to assess the impact of drug-specific properties on CL_R in the absence of transporter ontogeny. For each drug, the relative contribution of GFR and ATS to CL_R is determined according to Eqs. (3) and (4), respectively.

$$GFR_{contribution} \% = \frac{CL_{GFR}}{CL_R} \times 100 \quad (3)$$

$$ATS_{contribution} \% = \frac{CL_{ATS}}{CL_R} \times 100 \quad (4)$$

Table 2. Demographics of the typical virtual pediatric individuals [13] and adult [14] included in this analysis

Age	Height (cm)	Weight (kg)	Hematocrit (%)	Body surface area (m ²)
1 day	49.75	3.5	56	0.22
1 month	54.25	4.3	44	0.25
3 months	60	5.75	35.5	0.31
6 months	66	7.55	36	0.37
1 year	74.75	9.9	36	0.46
2 years	86	12.35	36.5	0.54
5 years	108.25	18.25	37	0.73
15 years	166	54.25	42	1.59
Adult	169.5	66.5	44	1.76

Influence of Renal Transporters Ontogeny on Pediatric CL_R

To assess the influence of ontogeny of kidney transporters on pediatric CL_R , we implemented transporter ontogeny fractions relative to adult values in the pediatric PBPK model for CL_R (Eqs. (1) and (2)) such that ontogeny of $CL_{int,T}$: [1] remained fixed at adult levels, [2] was a constant fraction of adult values throughout the pediatric age range, or (3) increased with age as a flexible fraction of adult values. The use of these implementations to describe

the ontogeny of transporters enabled us to explore different values and patterns for transporter ontogeny to ultimately quantify the impact of these changes on AT_S and CL_R throughout the pediatric age range. To quantify the influence of transporter ontogeny on pediatric CL_R predictions, a percentage prediction difference (%PD) was calculated between CL_R predictions without ontogeny ($CL_{R, adult, ont_T}$) (i.e., $ont_T = 1$) and CL_R predictions with transporter ontogeny that either remained constant or increased with age ($CL_{R, pediatric, ont_T}$) according to Eq. (5):

$$\%PD = \frac{CL_{R, adult, ont_T} - CL_{R, pediatric, ont_T}}{CL_{R, pediatric, ont_T}} \times 100 \quad (5)$$

The %PD obtained upon ignoring the ontogeny of kidney transporters was classified as leading to acceptable CL_R predictions for %PD below 30%, reasonably acceptable CL_R predictions for %PD between 30 and 50%, and unacceptable CL_R predictions for %PD above 50%. As published transporter ontogeny patterns only increase with age (i.e., ont_T is always between 0 and 1) until they reach adult $CL_{int, T}$ levels (i.e., $ont_T = 1$), the %PD will always be positive.

In addition, %PD was used to assess the systematic accuracy of CL_R predictions obtained while ignoring transporter ontogeny. CL_R at a certain age would have systematically acceptable predictions for a transporter pathway when the maximum %PD value for all 3800 hypothetical drugs at that pediatric age was below 30%. In this case, ontogeny of transporters was expected to have a limited role in predicting CL_R for any drug at that age. When CL_R predictions obtained in the absence of transporter ontogeny were reasonably acceptable or unacceptable for one or more hypothetical drugs, CL_R predictions were no longer considered systematically acceptable. In this case, CL_R predictions might still be acceptable for some of the hypothetical drugs; however, it cannot be known *a priori* whether CL_R predictions are acceptable or not for individual drugs, without taking drug properties into account. As such, systematically acceptable scenarios were a means to identify the pediatric ages for which the ontogeny of individual or aggregated transporters cannot be ignored, as it could lead to biased CL_R predictions.

RESULTS

Contribution of GF and AT_S to Pediatric CL_R for Drugs with Different Properties

The contributions of GF and AT_S to CL_R over age are shown in Fig. 2 for a selection of 9 hypothetical drugs with varying $CL_{int, T}$ and $f_{u, adult}$ values. These drugs represent the mean and the extremes of the assessed ranges for these parameter values. Here ont_T was fixed at 1, meaning that results show the influence of maturation of system-specific parameters other than transporter ontogeny on CL_R . Very similar results were obtained for drugs binding to AGP (Fig. S2).

Figure 2 and Fig. S2 show that GF and AT_S increase nonlinearly throughout the pediatric age range with the

steepest increase in the first year of life and continue to increase moderately up to the age of 15 years. Clearance by GF is strictly dependent on the maturation of GFR and on the concentrations of drug-binding plasma proteins, which impact f_u . Clearance by AT_S changes with age, and it depends on the maturation of Q_R , KW , concentrations of drug-binding plasma proteins, and hematocrit levels, the latter of which impact BP (Table 1).

The relative contribution of GF and AT_S to CL_R is strongly impacted by $CL_{int, T}$. For drugs mainly cleared by GF (e.g., $CL_{int, T} = 5 \mu\text{L}/\text{min}/\text{mg}$ protein), the relative contribution of AT_S to CL_R is on average 41%, and it decreases with age from 52% in neonates to 35% between ages 2 and 15 years. As $CL_{int, T}$ increases, AT_S becomes the main pathway for CL_R . A 10-fold increase in $CL_{int, T}$ from 5 to 50 $\mu\text{L}/\text{min}/\text{mg}$ protein increases the relative contribution of AT_S , on average, from 41 to 80%. When $CL_{int, T}$ is further increased up to 500 $\mu\text{L}/\text{min}/\text{mg}$ protein, AT_S relative contribution increases up to 90%.

Changes in CL_R are dependent on age-related changes in system-specific parameters as well as on differences in drug-specific parameters. Drugs mainly cleared by GF (e.g., $CL_{int, T} = 5 \mu\text{L}/\text{min}/\text{mg}$ protein) show, on average, a 15-fold increase in CL_R (from 3 to 46 mL/min) with $f_{u, adult}$ increasing from 0.05 to 0.95. For drugs mainly cleared by AT_S with a $CL_{int, T}$ of 50 $\mu\text{L}/\text{min}/\text{mg}$ protein, the same increase in $f_{u, adult}$ yields, on average, a 12-fold increase in CL_R (from 11 to 130 mL/min). For drugs that are mainly cleared by AT_S and are largely unbound from plasma proteins ($f_{u, adult} = 0.95$), a 10-fold increase in $CL_{int, T}$ (from 5 to 50 $\mu\text{L}/\text{min}/\text{mg}$ protein) yields, on average, a 2.8-fold increase in CL_R (from 46 to 130 mL/min). For drugs with very high $CL_{int, T}$ values, the same fold difference in $CL_{int, T}$ (from 50 to 500 $\mu\text{L}/\text{min}/\text{mg}$ protein) yields, on average, a lower increase in CL_R of only 1.8-fold (from 130 to 238 mL/min).

Changes in K_p (and implicitly in BP) may only become moderately relevant for drugs with very large $CL_{int, T}$ values and medium to high $f_{u, adult}$ values. When K_p increases from 1 to 4, CL_R increased, on average, only by 1.15-fold for drugs with $CL_{int, T} = 50 \mu\text{L}/\text{min}/\text{mg}$ protein and $f_{u, adult} = 0.55$ and reached a maximum increase of 1.25-fold for drugs with $CL_{int, T} = 500 \mu\text{L}/\text{min}/\text{mg}$ protein and $f_{u, adult} = 0.95$.

Influence of Renal Transporters Ontogeny on CL_R

The role of transporter ontogeny on CL_R was quantified by calculating the %PD between CL_R predictions with the transporter relative ontogeny fixed at adult levels ($CL_{R, adult, ont_T}$, $ont_T = 1$) and CL_R predictions with relative transporter ontogeny that either remains at a constant fraction of adult values or increases over age for individual transporters, as published for OAT1, OAT3, OCT2, Pgp [3], and aggregated transporters [11, 12] ($CL_{R, pediatric, ont_T}$).

Figure 3 shows the results for the same 9 hypothetical drugs as in Fig. 2, with four age-constant ontogeny fractions for the renal transporters (i.e., $ont_T = 0.05, 0.2, 0.5, 0.7$). Similar results are observed for drugs binding to AGP (Fig. S3). When transporters are underdeveloped ($ont_T < 0.2$), ontogeny of renal transporters cannot be ignored as it would lead to unacceptable CL_R predictions for all investigated hypothetical drugs regardless of age. The shapes of the

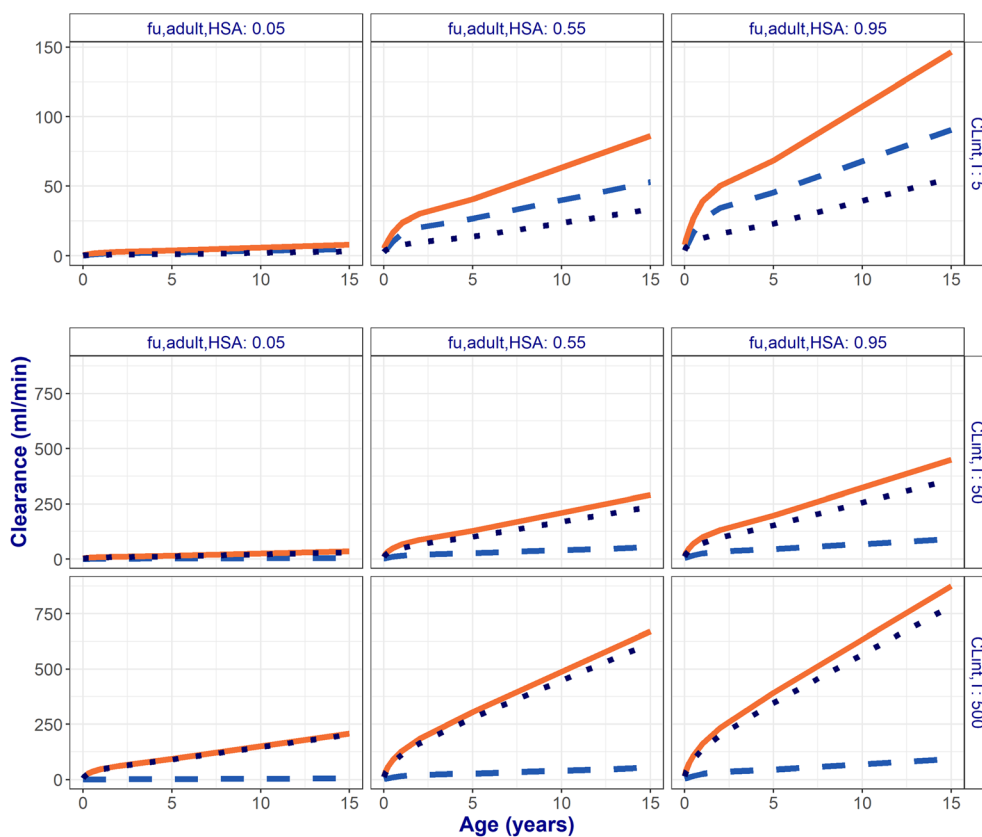


Fig. 2. Developmental changes in total renal clearance (CL_R , solid orange lines) and the contribution of glomerular filtration (GF, light blue dashed lines) and active tubular secretion (dark blue dotted lines) vs. age for 9 representative hypothetical drugs. These drugs bind to albumin (HSA) and have low, medium, or high unbound fractions in adults ($f_{u,adult}$, horizontal panels) that change with age, dependent on the HSA plasma concentrations. Transporter-mediated intrinsic clearance values ($CL_{int,T}$) were assumed to remain constant with age at the indicated values (vertical panels). Note the different scales on the y-axes for the graphs in the top row (range 0–150 mL/min) compared with the middle and bottom row (range 0–750 mL/min)

%PD profiles for the 9 selected drugs differ from one another, depending on whether the primary elimination pathway contributing to CL_R is GF or ATS. This is related to the maturation of other system-specific parameters that are underlying GF and ATS.

For drugs that are mainly cleared by GF ($CL_{int,T} = 5 \mu\text{L}/\text{min}/\text{mg}$ protein), in children younger than 6 months and relative transporter ontogeny lower than 0.2, ignoring ontogeny of kidney transporters would lead to unacceptable CL_R predictions (%PD = 53–113%). For children older than 6 months, with relative ontogeny higher than 0.05, reasonably acceptable CL_R predictions are obtained for all drugs mainly cleared by GF.

For drugs that are mainly cleared by ATS and have a low fraction unbound ($CL_{int,T} \geq 50 \mu\text{L}/\text{min}/\text{mg}$ protein with $f_{u,adult} = 0.05$) ignoring the ontogeny of transporters would lead to unacceptable CL_R predictions (%PD, 53–918%) for all pediatric individuals with a low transporter ontogeny ($ont_T \leq 0.5$). For drugs with $CL_{int,T} = 50 \mu\text{L}/\text{min}/\text{mg}$ protein and increasing $f_{u,adult}$, reasonably acceptable CL_R predictions are obtained for all ages when relative transporter ontogeny is high ($ont_T > 0.5$). For these drugs, %PD can reach values between 50 and 316% when transporter ontogeny is low ($ont_T \leq 0.2$). For drugs with a very large $CL_{int,T}$ and high

$f_{u,adult}$ ($CL_{int,T} = 500 \mu\text{L}/\text{min}/\text{mg}$ protein with $f_{u,adult} = 0.95$), the influence of transporter ontogeny on CL_R decreases, as indicated by the reasonably acceptable %PD values.

The results shown in Fig. 4 complement the previous findings by illustrating the implications for CL_R predictions for drugs that are substrates for transporters for which ontogeny functions have been published. Figure 4 shows when CL_R predictions are systematically acceptable with or without transporter ontogeny functions (i.e., CL_R values obtained with ont_T values varying with age according to individual [3] or aggregated [11, 12] transporter functions for ontogeny and CL_R values obtained with ont_T fixed to the adult levels ($ont_T = 1$)). In both simulations, system-specific parameters and transporter ontogeny functions changed with age as shown in the Table 1 and Fig. 1.

Figure 4 displays the results as a heat map, where the numbers in each box represent the minimum, median, and maximum %PD values obtained for all 3800 hypothetical drugs that are substrates for the indicated individual transporter or aggregated transporters at every pediatric age. Systematically acceptable scenarios are achieved when CL_R predictions for all 3800 hypothetical drugs lead to %PD values below 30% in the absence of transporter ontogeny. This is indicated by the green boxes, while orange and red

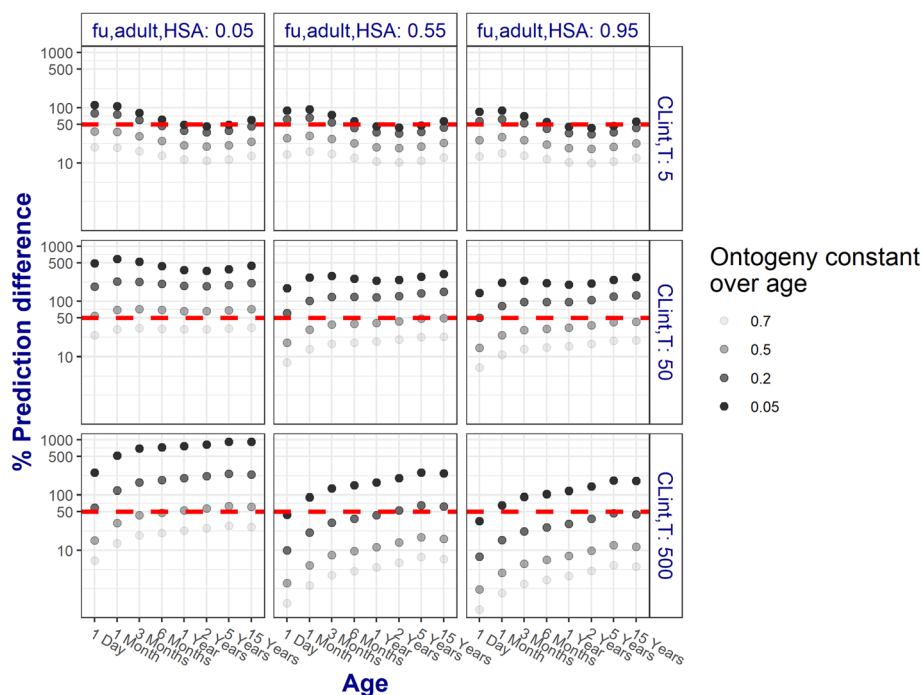


Fig. 3. Percentage prediction difference (%PD) for 9 representative hypothetical drugs calculated between renal clearance (CL_R) predictions obtained with the pediatric renal PBPK model that included or excluded hypothetical transporter ontogeny (ont_T) values that remained constant over age. These hypothetical drugs bind to albumin (HSA) and have low, medium, or high unbound fractions in adults ($f_{u,adult}$, horizontal panels) that change with age, dependent on the HSA plasma concentrations. Transporter-mediated intrinsic clearance values ($CL_{int,T}$) were assumed to remain constant with age at the indicated values (vertical panels). The colors of the %PD increase with decreasing transporter ontogeny values (ont_T). The dashed red line represents the threshold of reasonably acceptable CL_R prediction of 50%. Results are displayed on a log-log scale

boxes indicate CL_R predictions that are reasonably acceptable (highest %PD between 30 and 50%) and unacceptable (highest %PD > 50%), respectively, for one or more drugs. Nonetheless, when CL_R predictions are not systematically acceptable, it does not imply that %PD values below 30% were not observed, rather it indicates that predictions for one

or more drugs are biased at the indicated age. Hence, it cannot be predicted *a priori* whether the predictions without including ontogeny of transporters will be acceptable or not, without taking drug properties into account.

When the relative transporter ontogeny varied with age according to the functions of Cheung *et al.* (i.e., for OAT1,

	1 Day	1 Month	3 Months	6 Months	1 Year	2 Years	5 Years	15 Years
OCT2 ont.(Cheung)	16 %	2 %	1 %	1 %	0 %	0 %	0 %	0 %
	182 %	37 %	15 %	7 %	4 %	2 %	1 %	0 %
	746 %	73 %	26 %	13 %	7 %	3 %	1 %	0 %
OAT3 ont.(Cheung)	8 %	5 %	5 %	4 %	3 %	3 %	2 %	1 %
	146 %	79 %	54 %	38 %	28 %	21 %	15 %	10 %
	506 %	174 %	109 %	78 %	56 %	41 %	27 %	16 %
OAT1 ont.(Cheung)	5 %	3 %	4 %	3 %	3 %	3 %	2 %	1 %
	113 %	62 %	44 %	33 %	25 %	20 %	15 %	10 %
	341 %	130 %	87 %	65 %	49 %	38 %	27 %	17 %
P-gp ont.(Cheung)	6 %	2 %	1 %	1 %	1 %	0 %	0 %	0 %
	130 %	35 %	18 %	11 %	7 %	4 %	2 %	1 %
	422 %	69 %	33 %	20 %	12 %	7 %	4 %	2 %
ATS ont. (Hayton)	9 %	18 %	15 %	10 %	7 %	6 %	4 %	0 %
	149 %	173 %	135 %	95 %	67 %	53 %	33 %	0 %
	527 %	545 %	397 %	264 %	172 %	124 %	64 %	0 %
ATS ont. (De Woskin)	2 %	7 %	5 %	3 %	3 %	1 %	1 %	1 %
	62 %	107 %	54 %	28 %	29 %	9 %	4 %	5 %
	156 %	259 %	111 %	53 %	59 %	16 %	7 %	8 %

Fig. 4. Percentage prediction difference (%PD) between CL_R predictions obtained with the pediatric PBPK model that does not include transporter ontogeny ($ont_T = 1$, reflecting adult values) and the model that includes age-specific pediatric ont_T values for each of the indicated transporter systems. In each box, the minimum (top), median (middle), and maximum (bottom) %PD is displayed to summarize the findings for all hypothetical drugs per typical pediatric individual at different ages. Systematically acceptable scenarios have %PD for all drugs < 30% (green box), reasonable acceptable scenarios have %PD for all drugs ≤ 50% (orange box), and the absence of systematic acceptance means that at least one drug has a %PD > 50% (red box)

OAT3, OCT2, and P-gp) [3], ignoring ontogeny leads to CL_R predictions that were not systematically acceptable for all transporters in newborns of 1 month and younger. CL_R predictions of drugs that are substrates of OAT transporters are not systematically acceptable below the age of 1 year. For children of 2 years and older, ignoring the ontogeny of transporters leads to CL_R predictions that were reasonably acceptable or acceptable for all transporters—individual or aggregated—and all substrates, except when ontogeny follows the aggregated transporters ontogeny function as published by Hayton *et al.*

DISCUSSION

A PBPK-based framework was used to predict CL_R of hypothetical drugs with various properties that are substrates for renal secretion transporters throughout the pediatric age range. This approach provided insight on the contribution of GF and ATS to the total pediatric CL_R . In addition, the impact of ignoring this transporter ontogeny in predicting CL_R in children was quantified.

The physiology-based model for CL_R used in the presented framework was developed based on a model published for adults [5] that was extended to the pediatric population by including maturation functions for the system-specific parameters as shown in Table 1 and illustrated in Fig. 1a. This model included two major contributing pathways to CL_R : GF and ATS. Based on this model, we could quantify the impact of transporter ontogeny on pediatric drug clearance for all current and future small molecule drugs, based on drug-specific properties alone. We found that the

contribution of these pathways to CL_R increases nonlinearly throughout the pediatric age range, with the steepest increase during the first year of life, even in the absence of transporter ontogeny. These changes in pediatric CL_R are determined by the influence of maturation in the system-specific parameters underlying GF and ATS as well as by drug-specific properties (Fig. 2). Both GF and ATS increase with increasing f_u , while ATS also increases with increasing $CL_{int,T}$ values.

Drug f_u was found to have a major influence on CL_R through both investigated pathways but especially on CL_R through GF. $CL_{int,T}$ has a major influence on CL_R only through ATS. Drugs with 10-fold different $CL_{int,T}$ values and low binding to plasma proteins ($f_{u,adult} = 0.95$) yield different contributions of ATS to CL_R . When ATS contribution to CL_R is limited only by the activity and the abundance of transporters (i.e., $CL_{int,T}$ changes between 5 and 50 $\mu\text{L}/\text{min}/\text{mg}$ protein), an increase of 1.9-fold in average ATS contribution was observed. As $CL_{int,T}$ changes between 50 and 500 $\mu\text{L}/\text{min}/\text{mg}$ protein, we observed a lower increase in average ATS contribution of only 1.1-fold [16]. This behavior could be explained by the fact that f_u and $CL_{int,sec}$ are rate limiting factors for ATS when $CL_{int,sec} \times f_u$ is low relative to Q_R (i.e., permeability-limited process). Q_R becomes the rate limiting factor for ATS when $CL_{int,sec} \times f_u$ becomes high in comparison to Q_R (i.e., perfusion-limited process). This also explains why the impact of ignoring transporter ontogeny decreases for drugs with very high $CL_{int,T}$, as shown by the lower %PD values in Fig. 3. It is important to mention that the process limiting ATS may change with age, whether ATS is permeability-limited ($CL_R/Q_R < 0.3$) or perfusion-limited ($0.3 < CL_R/Q_R < 0.7$) or a combination between the two processes, $0.3 < CL_R/Q_R < 0.7$, as shown in Fig. 5.

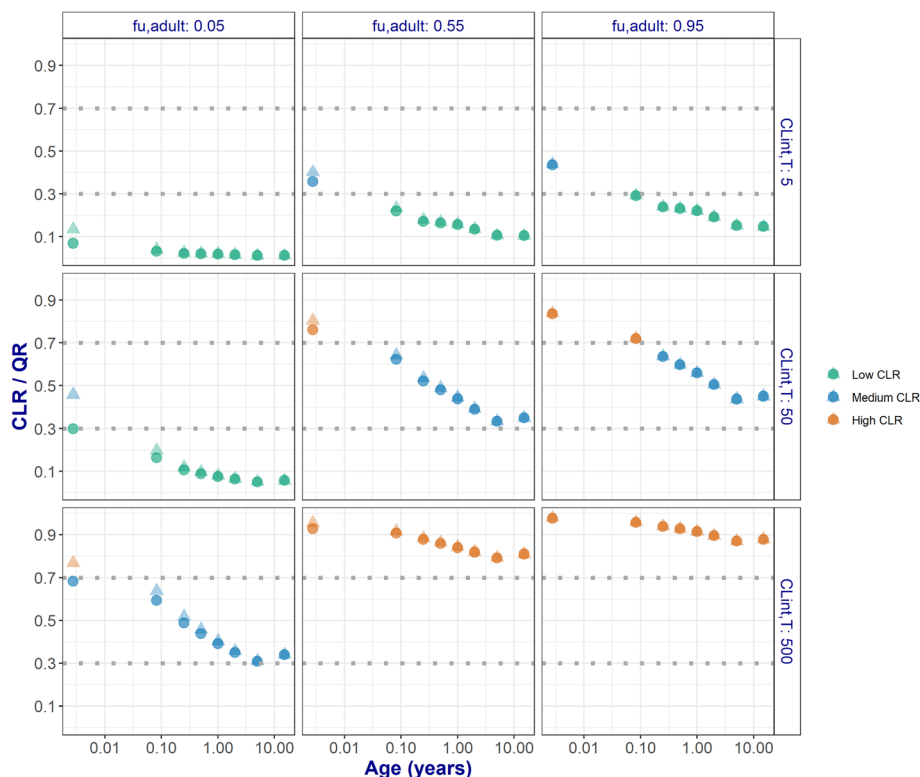


Fig. 5. Ratio of total renal clearance (CL_R) and renal blood flow (Q) for 9 representative hypothetical drugs. Results are presented for drugs binding to human serum albumin (HSA) (circles) or to α -acid glycoprotein (AGP) (faded triangles)

The present framework explored a broad parameter space for ontogeny of transporters. By keeping ontogeny of transporters constant with age, the potential impact of ignoring ontogeny on predicting CL_R was systematically explored (Fig. 3). This exploration highlights that an ontogeny below 0.2 of the adult value cannot be ignored for the majority of drugs regardless of the pediatric age. In this situation, the assumption that there are no differences in transporter ontogeny between children and adults would lead to unacceptable CL_R predictions. Data characterizing how ontogeny of individual kidney transporters changes across the pediatric age is scarce in literature. Cheung *et al.* [3] recently took the first steps in quantifying the ontogeny of protein abundance for individual renal transporters. According to this report, which is based on a limited sample size, BCRP, MATE1, MATE2-K, and GLUT2 have protein abundance levels similar to the adult levels throughout the studied pediatric age range [3], meaning that $ont_T=1$ for children of all ages and that transporter ontogeny is not a factor of influence in predicting CL_R for substrates of these transporters. Including these ontogeny profiles in the current framework increased our understanding on the role of age-dependent ontogeny in predicting CL_R (Fig. 4). As reported by Cheung *et al.*, the ontogeny of OAT1 and OAT3 is slower than the ontogeny of OCT2 and P-gp. Ignoring OCT2 ontogeny yields systematically acceptable pediatric CL_R values for all its hypothetical substrates in children from 3 months and older. For P-gp substrates, the same holds true in children from 6 months and older. Ontogeny of OATs however cannot be ignored for children younger than 2 years as CL_R predictions are not systematically acceptable for substrates of this transporter. The CL_R predictions obtained with the aggregate transporter function published by DeWoskin *et al.* [11] are in line with the results for OATs. The aggregate function of Hayton *et al.* [12] suggests a much slower ontogeny leading to CL_R predictions that are not systematically acceptable in children up to and including 5 years. CL_R predictions with Hayton *et al.* [12] diverge from the predictions obtained with the other transporter ontogeny functions since it was the first function to quantify the ontogeny of ATS and has a different profile than all the other studied functions. Disregarding ontogeny of transporters leads to over-predictions of CL_R in young patients. If these predicted CL_R values were used as the basis for pediatric dose adjustments, these could lead to overexposure to drugs and, eventually, increase the risk of toxic events.

As our analysis identifies drugs for which CL_R is sensitive to transporter ontogeny, the proposed framework can also be used to find and select drugs with relevant properties to serve as *in vivo* probes for the quantification of the ontogeny of transporters underlying ATS. From the results of the current analysis, we could conclude that the best probe drugs should have a $CL_{int,T}$ of 5–50 $\mu\text{L}/\text{min}/\text{mg}$ protein and medium to high fraction unbound in adults ($f_{u,adults}=0.55\text{--}0.95$). Drugs for which GF is the main elimination pathway or drugs with extremely high $CL_{int,T}$ that cause renal blood flow to be limiting for elimination will have a limited use in characterizing ontogeny profiles. These guidelines could be the basis for future research

aiming to derive ontogeny of individual renal transporters *in vivo*.

Our results rely on the validity of the PBPK approach, which is currently considered the “gold standard” for clearance predictions in the absence of clinical data. This approach gives an overview of the impact of system- and drug-specific parameters on CL_R . The explored arrays of ontogeny fractions and of drug properties were realistic; however, unrealistic combinations of drug properties could have been generated. As with the previously published hepatic PBPK framework [6], this analysis does not include measures for the variability or uncertainty of the parameters that constitute the PBPK model, to highlight the impact of system- and drug-specific changes in the absence of variability and uncertainty. Our approach could be extended for investigations on the impact of variability and uncertainty by including variability terms on the system-specific parameters and performing stochastic simulations. Finally, PBPK modeling is ideally suitable to study the impact of specific physiological processes in a way that is not possible *in vivo*. In the *in vivo* situation, studies are limited to drugs that are currently available on the market and prescribed to children. However, generally these drugs are not eliminated in totality by one single pathway. Moreover, the accuracy of these observations is impacted by aspects related to study design, sampling, and analytical methods. Our current model-based analysis is not impacted by these limitations. The physiology-based model for CL_R used here only included GF and ATS, but not passive permeability, reabsorption, or renal metabolism. This enabled the study of GF and ATS in isolation and reduced the noise and complexity of the results. The influence of ontogeny on transporters working in tandem or of reabsorption and kidney metabolism together with their dependencies on physiological properties, like pH at the tubule side, ionization, enzyme abundance, affinity, and maturation, could be explored in a similar manner in subsequent analyses.

CONCLUSION

A PBPK-based framework was used to determine the role of drug properties and ontogeny of transporters in predicting pediatric CL_R . The contribution of GFR to CL_R is influenced by drug f_u . The contribution of ATS to CL_R is predominantly influenced by changes in f_u and $CL_{int,T}$ for drugs with low and medium $CL_{int,T}$ as well as by changes in Q_R for drugs with high $CL_{int,T}$. Transporters play a major role in predicting CL_R . Discordance in the CL_R predictions when ignoring maturation in ATS shows when acceptable predictions of total pediatric CL_R from the adults if extrapolation solely relied on changes in GF with age are not possible. Ignoring transporter ontogeny, especially when it is below 0.2 of the adult values, leads to unacceptable CL_R predictions for the majority of drugs, regardless of age. Given known age-dependent patterns, transporter ontogeny cannot be ignored in children younger than 2 years. Drugs with properties that lead to high %PD when ignoring ATS ontogeny may serve as sensitive *in vivo* probes to further investigate transporter ontogeny.

Open Access This article is licensed under a Creative Commons Attribution 4.0 International License, which permits use, sharing, adaptation, distribution and reproduction in any medium or format, as long as you give appropriate credit to the original author(s) and the source, provide a link to the Creative Commons licence, and indicate if changes were made. The images or other third party material in this article are included in the article's Creative Commons licence, unless indicated otherwise in a credit line to the material. If material is not included in the article's Creative Commons licence and your intended use is not permitted by statutory regulation or exceeds the permitted use, you will need to obtain permission directly from the copyright holder. To view a copy of this licence, visit <http://creativecommons.org/licenses/by/4.0/>.

REFERENCES

- Morrissey KM, Stocker SL, Wittwer MB, Xu L, Giacomini KM. Renal transporters in drug development. *Annu Rev Pharmacol Toxicol.* 2013;53:503–29. <https://doi.org/10.1146/annurev-pharmtox-011112-140317>.
- Kunze A, Huwyler J, Poller B, Gutmann H, Camenisch G. In vitro-in vivo extrapolation method to predict human renal clearance of drugs. *J. Pharm. Sci.* 2014;103:994–1001. <https://doi.org/10.1002/jps.23851>.
- Cheung KWK, Groen BD, Spaans E, Borselen MD, Bruijn ACJM, Simons-Oosterhuis Y, et al. A Comprehensive Analysis of Ontogeny of Renal Drug Transporters: mRNA Analyses, Quantitative Proteomics, and Localization. *Clin. Pharmacol. Ther.* 2019;106:1083–92. <https://doi.org/10.1002/cpt.1516>.
- Elmorsi Y, Barber J, Rostami-Hodjegan A. Ontogeny of hepatic drug transporters and relevance to drugs used in pediatrics. *Drug Metabolism and Disposition.* 2016;44:992–8. <https://doi.org/10.1124/dmd.115.067801>.
- Rowland Yeo K, Aarabi M, Jamei M, Rostami-Hodjegan A. Modeling and predicting drug pharmacokinetics in patients with renal impairment. *Expert Rev Clin Pharmacol.* 2011;4:261–74.
- Calvier E, et al. Allometric scaling of clearance in paediatrics: when does the magic of 0.75 fade? *Clin Pharmacokinet.* 2017;56:273–85.
- Krekels EHJ, Calvier EAM, van der Graaf PH, Knibbe CAJ. Children Are Not Small Adults, but Can We Treat Them As Such? *CPT Pharmacometrics Syst. Pharmacol.* 2019. <https://doi.org/10.1002/psp4.12366>.
- Johnson TN, Rostami-Hodjegan A, Tucker GT. Prediction of the clearance of eleven drugs and associated variability in neonates, infants and children. *Clin. Pharmacokinet.* 2006;45:931–56.
- Salem F, Johnson TN, Abduljalil K, Tucker GT, Rostami-Hodjegan A. A re-evaluation and validation of ontogeny functions for cytochrome P450 1A2 and 3A4 based on in vivo data. *Clin. Pharmacokinet.* 2014;53:625–36.
- Simcyp (a Certara Company). Simcyp v18. (2018).
- DeWoskin RS, Thompson CM. Renal clearance parameters for PBPK model analysis of early life stage differences in the disposition of environmental toxicants. *Regul. Toxicol. Pharmacol.* 2008;51:66–86.
- Hayton WL. Maturation and growth of renal function: dosing renally cleared drugs in children. *AAPS PharmSci.* 2000;2:E3.
- National Health and Nutrition Examination Survey. www.cdc.gov/growthcharts/index.htm.
- International Commission on Radiological Protection. Basic anatomical and physiological data for use in radiological protection - Skeleton. *Ann. ICRP* 32, 1–277 (1995).
- Rowland, M. & Tozer, T. N. *Clinical Pharmacokinetics and Pharmacodynamics: Concepts and Applications.* (Wolters Kluwer Health/Lippincott William & Wilkins, 2011).
- Tucker G. Measurement of the renal clearance of drugs. *Br. J. Clin. Pharmacol.* 1981. <https://doi.org/10.1111/j.1365-2125.1981.tb01304.x>.
- Rubin MI, et al. Maturation of Renal Function in Childhood: Clearance Studies. *J. Clin. Invest.* 1949;28:1144–62.

Publisher's Note Springer Nature remains neutral with regard to jurisdictional claims in published maps and institutional affiliations.