



LCZ696 mitigates diabetic-induced nephropathy through inhibiting oxidative stress, NF- κ B mediated inflammation and glomerulosclerosis in rats

Mohamed Mohany, Ahmed Z. Alanazi, Faleh Alqahtani, Osamah M. Belali, Mohammed M. Ahmed and Salim S. Al-Rejaie

Department of Pharmacology and Toxicology, College of Pharmacy, King Saud University, Riyadh, Saudi Arabia

ABSTRACT

Background. Diabetic nephropathy (DN) is among the most common microvascular complications of diabetes resulting in end-stage renal disease and therefore search for candidates which can ameliorate the kidney function is needed simultaneously with standard diabetic pharmacotherapy. The current study was aimed to investigate the effect of long term sacubitril/valsartan therapy (LCZ696) in diabetic rats to assess its ameliorative impact against various pathological parameters such as oxidative stress, inflammation and glomerulosclerosis associated with chronic DN.

Methods. A single dose (60 mg/kg/day) of STZ was used to induce type 1 diabetes in adult male wistar rats. 2 weeks after diabetes induction, these rats were treated orally with valsartan (31 mg/kg) or LCZ696 (68 mg/kg) for 6 weeks. At end of the treatment period, serum and kidney samples were collected and analyzed. The serum levels of glucose, insulin, urea, creatinine, TNF- α , IL-1 β , IL-6 and IL-10 levels were estimated. In renal tissue homogenate, the levels of inflammatory markers such as TNF- α , IL-1 β , IL-6, NF- κ B along with oxidative stress biomarkers including thiobarbituric acid-reacting substances (TBARs), glutathione (GSH), superoxide dismutase (SOD), catalase (CAT), glutathione peroxidase (GPx), glutathione S-transferase (GST) were assessed. Histological changes were observed in kidney.

Results. Time course therapy with LCZ696 and valsartan in diabetic rats resulted in significant reduction of serum glucose, urea and creatinine levels ($P < 0.05$). Additionally, serum of treated diabetic rats showed a diminution in inflammatory (TNF- α , IL-1 β , IL-6) and increment in anti-inflammatory (IL-10) cytokines levels ($P < 0.05$). Tissue homogenate of the kidney extracted from LCZ696 and valsartan treated diabetic rats revealed a substantial reduction in the levels of inflammatory markers such as TNF- α , IL-1 β , IL-6, NF- κ B and sufficient restoration of anti-oxidant enzyme levels ($P < 0.05$). Finally, in the histological sections of the kidney, prevention of renal injury was observed with limited necrosis and inflammatory cells infiltration.

Conclusion. Present data suggest that LCZ696 has sufficient therapeutic potential to restrict DN progression through inhibiting inflammation, oxidative stress and glomerulosclerosis.

Submitted 3 December 2019

Accepted 24 April 2020

Published 19 June 2020

Corresponding author

Salim S. Al-Rejaie, rejaie@ksu.edu.sa,
rejaie@hotmail.com

Academic editor

Rajesh Singh

Additional Information and
Declarations can be found on
page 15

DOI 10.7717/peerj.9196

© Copyright

2020 Mohany et al.

Distributed under

Creative Commons CC-BY 4.0

OPEN ACCESS

Subjects Biochemistry, Diabetes and Endocrinology, Nephrology, Pharmacology, Histology

Keywords Diabetic nephropathy, LCZ696, Oxidative stress, Inflammation, Glomerulosclerosis

INTRODUCTION

Diabetes mellitus (DM) is the most common metabolic disorder that negatively affects all aspects of body metabolism, contributing to multiple complications and dysfunction of the tissues (*Carlsson, Andersson & Ahlbom, 2016; Sharma, Nazareth & Petersen, 2016*). Diabetic nephropathy (DN) is the serious complication among people associated with DM and accounts 50% of end-stage renal diseases worldwide (*Kanwar et al., 2011; Sulaiman, 2019*). Notably, unremitting hyperglycemia is one of the primary causes of DN, which can ultimately result in damage to blood vessels, chronic inflammation and renal injury (*Duran-Salgado & Rubio-Guerra, 2014*). Generally, nephropathy is a common cause of mortality in patients with DM (*Skupien et al., 2019*). This syndrome is characterized by the progressive loss of renal functions and persistent albuminuria (*Lim, 2014*) followed by certain pathological changes such as glomerular mesangial expansion and accumulation of extracellular matrix as indicators of the incidence of glomerulosclerosis (*Peng et al., 2019*). Moreover, high levels of glucose can impair the growth of cells overtime and the production of growth factors as well as the occurrence of genes that eventually increase the extracellular matrix (*Vallon & Komers, 2011*). DN has several serious consequences such as fluid retention, imbalanced electrolytes and blood vessels damages. Therefore, DN is considered the causative factor for many health problems including hypertension, heart and blood vessels diseases (*Petrie, Guzik & Touyz, 2018*).

A large body of evidence indicates that inflammatory and oxidative stress signaling pathways are involved in the pathogenesis of DN (*Hameed et al., 2018; Kato & Natarajan, 2014*). Hence, the control of DN could be accomplished by targeting these two pathways. Oxidative stress is induced by an imbalance between the production of free radicals and the protection of antioxidants in cells that can cause tissue damage through necrosis and apoptosis (*Pizzino et al., 2017*). The most devastating effect of oxidative stress is the observed damage in proteins, lipids and DNA (*Liguori et al., 2018*). In addition, several studies have demonstrated an elevation of pro-inflammatory cytokines such as tumor necrosis factor- α (TNF- α), interleukin-1 β (IL-1 β) in DN patients (*Chang et al., 2016*) and in experimental animal models as well (*Yang, 2019*). In addition to renal inflammation, this increase in inflammatory factors disturb the systemic immune functions. Furthermore, uncontrolled hyperglycemia and oxidative stress have been shown to trigger transcription factors such as the nuclear factor kappa B (NF- κ B) which enhance apoptotic, fibrotic and inflammatory processes which play a major role in cell injury and other complications (*Singh et al., 2014*). Thus the NF- κ B is considered a potential target in the management of vascular complications of diabetes (*Suryavanshi & Kulkarni, 2017*).

The renin-angiotensin system (RAS) plays a key and regulatory role in most mechanisms involved in progression of renal diseases particularly DN (*Yang & Xu, 2017*). The inhibition of angiotensin II (Ang II) function using either angiotensin-converting enzyme inhibitors (ACEIs) or Ang II receptor blockers (ARBs) is important therapy for DN management (*Baltatzi, Savopoulos & Hatzitolios, 2011*). Valsartan (angiotensin II receptor blocker) has been found to reduce podocyte injury, oxidative stress and inflammation in a mouse model of DN (*Zhou et al., 2014*). LCZ696 belongs to a new class of drug called

angiotensin receptor-neprilysin inhibitors (ARNIs) which combines an antagonist of neprilysin with ARB in a definite proportion. The clinical trials have shown that after LCZ696 treatment, significant decrease in the overall mortality and heart failure (HF) was noticed in hospitalizations ([Jessup et al., 2014](#)). Recently, experimental studies showed that LCZ696 was therapeutically superior to valsartan in modulation of RAS in spontaneously hypertensive female rats ([Zhao et al., 2019](#)). Additionally, it has been demonstrated that LCZ696 therapy delays the progression of chronic kidney disease in animal model ([Jing et al., 2017](#)). Accordingly, the present study was designed to evaluate the impact of LCZ696 administration on renal functions, oxidative stress, inflammation and glomerulosclerosis in streptozotocin induced diabetic rat model.

MATERIAL AND METHODS

Animal handling

Adult male Wistar rats weighing 260–300 g were obtained from the Central Animal Facility, Pharmacy College, King Saud University, where they were maintained and monitored in a specific pathogen-free environment. All experimental procedures including euthanasia were conducted in accordance with the National Institute of Health Guide for the Care and Use of Laboratory Animals, Institute for Laboratory Animal Research (NIH Publications No. 80-23; 1996) as well as The King Saud University Research Ethics Committee (approval number SE-19-118). All animals were allowed to acclimatize in polycarbonate cages inside a well-ventilated room for 7 days prior to experimentation. The animals were maintained under standard laboratory conditions (temperature of 23 °C, relative humidity of 60–70%, and 12-h light/dark cycle). The diet content protein 20%, fat 4%, fiber 3.5%, ash 6% and with the total energy 2850 Kcal/kg was purchased from the Grain Silos & Flour Mills Organization (GSFMO), Riyadh, Saudi Arabia. The animals were provided with food and water ad libitum.

Diabetic induction

Diabetes mellitus was induced by a single intraperitoneal injection (60 mg/kg) of streptozotocin (STZ) in overnight fasted rats by dissolving it in freshly prepared 0.1 M citrate buffer, pH 4.5 as previously described ([Alotaibi et al., 2019](#)). After STZ injection, the rats received free access of dextrose solution (5%) for 24 h to avoid hypoglycemic shock. Two-days after the STZ injection, blood sugar levels were tested (mg/dl) by using strips on glucometer (ACCU-CHEK ACTIVE, Roche, Germany). Animals with fasting blood glucose levels >110 mg/dl were considered as type 1 diabetic rats ([Ojiako, Chikezie & Ogbuji, 2015](#)) and included in the study.

Experimental design

Eighteen diabetic male rats were randomly divided into three groups with six rats in each group and same number of normal rats were divided into other three groups.

1. Normal rats were treated with vehicle (NC).
2. Diabetic rats treated with vehicle (DC).
3. Normal rats were treated with valsartan (31 mg/kg/day) orally (NV).

4. Normal rats were treated with LCZ696 (68 mg/kg/day) orally (NSV).
5. Diabetic rats were treated with valsartan (31 mg/kg/day) orally (DV).
6. Diabetic rats were treated with LCZ696 (68 mg/kg/day) orally (DSV).

Valsartan (Tabuvan[®]) and LCZ696 (Entresto[™]) tablets were suspended in 0.5% carboxymethyl cellulose (CMC) and administered via oral gavage in a volume of 0.5 ml/100 g body weight of each animal. Doses for both the drugs were selected from the literature ([Habibi et al., 2019](#)). The control and STZ groups received similar volumes of 0.5% CMC during the experiment period. Treatment started two weeks after the diabetic induction and continued for six weeks.

Samples collection

After the treatment period of 6 weeks, the animals were overnight fasted and were anesthetized with ketamine (Hikma Pharmaceuticals, Jordan, 94 mg/kg)/xylazine (Laboratories Calier, Spain, 10 mg/kg) mixture. Blood samples were withdrawn from the heart and placed into clean tubes, then the serum samples were separated by centrifugation at 3,000 rpm (800 g) for 10 min and stored at -80°C until analysis. Both the kidneys were dissected, and small portion of kidney from each animal was immersed and fixed in 10% neutral buffer formalin (pH 7.4) for subsequent use in histopathological examinations. The other part of kidney samples immediately immersed in liquid nitrogen for a minute and then stored at -80°C until analysis.

Serum analysis

Serum levels of glucose and insulin were assessed by a commercially available kit (RANDOX Laboratories Ltd., UK and SPI bio, France, Millipore, EZRMI-13K, respectively). Serum creatinine and urea levels were measured by colorimetric methods (Linear Chemicals, Barcelona, Spain). Serum levels of IL-1 β , TNF- α , IL-6 and IL-10 were determined by following the ELISA techniques (Thermo Scientific, Rockford, IL, USA).

Tissue analysis

Small portions of kidneys were homogenized in physiological buffer (1:10, w/v). In order to remove cell debris, this homogenate was centrifuged at 1,000 rpm for 10 min at 4°C . After discarding the pellets and to obtain post-mitochondrial supernatant, a portion of supernatant was centrifuged again at 12,000 rpm for 20 min and total protein concentrations in kidneys were measured according to Lowry assay (1951) ([Lowry et al., 1951](#)) using bovine serum albumin as a standard. Thiobarbituric acid reactive substances (TBARS) and glutathione (GSH) levels were measured by using ELISA kits (Cayman Chemical Co., USA). Renal levels of IL-1 β , TNF- α , IL-6 and NF- κB were determined by following the ELISA techniques (Thermo Scientific, Rockford, IL, USA). In post-mitochondria supernatants of kidney samples, enzymatic activities of superoxide dismutase (SOD), catalase (CAT), glutathione peroxidase (GPx) and glutathione-S-transferase (GST) were measured by using ELISA kits (R&D systems Inc., USA).

Renal histological evaluation

Rat kidneys were fixed in 10% formalin, dehydrated, and then embedded with paraffin wax. Using an automated microtome (Leica RM 2125 RM, Leica Microsystems, Nussloch,

Germany), sections (5–7 μm) were obtained and mounted on glass slides. All slides were stained with hematoxylin and eosin (H&E) and examined using a light microscope Nikon Eclipse E600 with a digital high-resolution camera by an experienced pathologist in a blinded manner.

Evaluation of leukocyte infiltration

Leukocyte infiltration was semi-quantitatively assessed by an experienced pathologist blinded to the study groups according to the guidelines described by [Velasquez et al. \(1997\)](#). The intensity of leukocyte infiltration on H&E stained renal cortex sections was obtained by assigning a score of 1–4 to each glomerulus as follows: normal = 0; up to 25% involvement = 1; 25%–50% involvement = 2; 50%–75% involvement = 3 and more than 75% involvement = 4.

Mean glomerular volume assessment

The 2-profile method was applied to estimate the mean glomerular volume as described previously ([Najafian, Basgen & Mauer, 2002](#)). Briefly, at a thickness of 5 μm kidney samples were sectioned stained with periodic acid–Schiff (PAS) ($n = 6$). Two sections were made on parallel slides at 20- μm intervals. Then 10 individual glomeruli were randomly selected for imaging. The glomerular tuft was digitally traced in each captured image, and the areas were calculated using imaging software (NIS-Elements D 3.22; Nikon Instruments Inc., Melville, NY). Based on the areas of the two sections, the mean glomerular volume was calculated.

Evaluation of glomerulosclerosis

Kidney sections ($n = 6$) stained with PAS were used for glomerulosclerosis demonstration. The degrees of glomerular damage were assessed semi-quantitatively using a Nikon Eclipse E600 optical microscope according to scoring method in randomly selected 100 glomeruli per section as follows: grade 0, normal glomeruli; grade 1, sclerotic area up to 25% (minimal sclerosis); grade 2, sclerotic area 25–50% (moderate sclerosis); grade 3, sclerotic area 50–75% (moderate-severe sclerosis); grade 4, sclerotic area 75–100% (severe sclerosis). The glomerulosclerotic index (GSI) was calculated using the following formula: $\text{GSI} = (1 \times n_1) + (2 \times n_2) + (3 \times n_3) + (4 \times n_4) / n_0 + n_1 + n_2 + n_3 + n_4$, where n_x is the number of glomeruli in each grade of glomerulosclerosis ([Saito et al., 1987](#)).

Statistical analysis

The results of the current study are described as the mean and standard error (mean \pm SEM) ($n = 6$). One-way ANOVA was performed to test the significant differences among different groups. Newman-Keuls multiple comparison test was applied as a post hoc test. The data were considered significant when $P \leq 0.05$. Statistical analyses were performed using Graph Pad Prism version 5.

RESULTS

Effects of LCZ696 and valsartan on serum parameters

[Figure 1](#) shows the serum glucose, insulin, urea and creatinine levels in diabetic and treated groups. There was a significantly higher level ($P < 0.001$; DC vs. NC) of glucose

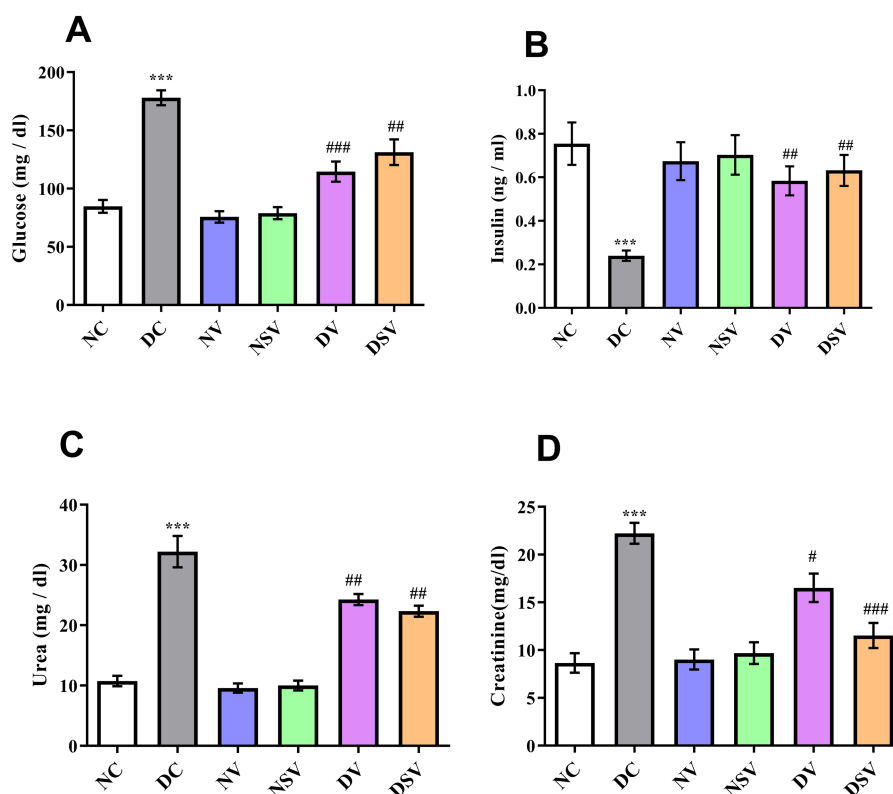


Figure 1 Effect of valsartan and LCZ696 on serum glucose (A), insulin (B), urea (C) and creatinine (D) levels in STZ-induced diabetic rats. Data are expressed as the mean \pm SEM ($n = 6$ per group). Statistically significant difference: * $p < 0.001$ versus NC group and # $p < 0.05$, ## $p < 0.01$, ### $p < 0.001$ versus DC group. (ANOVA followed by Newman-Keuls multiple comparison test). NC, Normal Control; DC, Diabetic Control; NV, normal valsartan; NSV, normal sacubitril/valsartan; DV, diabetic valsartan; DSV, Diabetic sacubitril/valsartan.

Full-size DOI: 10.7717/peerj.9196/fig-1

in DC group with the mean value of 178 ± 6.4 mg/dl in comparison to NC group 84.7 ± 5.5 mg/dl. After 6 weeks of treatments with valsartan and LCZ696 in the diabetic rats, significant reduction ($P < 0.001$; DV vs. DC and DSV vs. DC) in serum glucose levels were seen with the mean serum glucose values were 114.6 ± 8.6 mg/dl in DV group and 131.2 ± 11 mg/dl in DSV. A three folds decrease ($P < 0.001$) in serum insulin levels (0.24 ± 0.02 ng/ml) were seen in the DC when compared to NC (0.75 ± 0.1 ng/ml). Furthermore, in diabetic groups of animals with time course therapy of valsartan and LCZ696, a significant restoration of insulin levels were observed and amounting to 0.58 ± 0.06 and 0.63 ± 0.07 ng/ml ($P < 0.01$ – 0.001 vs. DC). Urea level observed in the DC group was 32.2 ± 2.6 mg/dl and after 6 weeks of treatments levels noticed in DV were 24.2 ± 0.9 mg/dl ($P < 0.001$ compared to DC) and in DSV 22.3 ± 0.9 mg/dl ($P < 0.001$ compared to DC). Finally the serum level of creatinine observed in treated DV and DSV were 16.52 ± 1.4 mg/dl and 11.54 ± 1.3 mg/dl in comparison to DC 22.2 ± 1.0 mg/dl ($P < 0.01$ – 0.001 vs. DC).

Effects of LCZ696 and valsartan on serum inflammatory cytokines

The serum levels of pro-inflammatory cytokines (IL-1 β , IL-6, TNF- α) and anti-inflammatory marker IL-10 were assessed by ELISA in control, diabetic and treated groups and presented in Fig. 2. In DC group, the level of IL-6 was found significantly higher (324.1 ± 31 pg/ml; $P < 0.001$) in comparison to normal control (179.6 ± 9.3 pg/ml) and treated groups (160.4 ± 8.3 pg/ml for NV, 167.3 ± 8.6 pg/ml for NSV, 198 ± 14.7 pg/ml for DV and 209.5 ± 14.3 pg/ml for DSV; $P < 0.05$ compared to DC group). In comparison to DC, there was 2-folds increase seen in case of IL-1 β with the DC group and amounting to 162.3 ± 18.16 pg/ml, $P < 0.001$. Subsequent to 6-week's treatments with valsartan and LCZ696 in the diabetic rats, the observed levels of IL-1 β were found statistically significant ($P < 0.001$) in comparison to DC group and values were 104.2 ± 6.6 pg/ml for DV group and 113.3 ± 14.06 pg/ml for DSV treated group. Moreover, the level of TNF- α were significantly reduced in STZ induced diabetes treated groups with valsartan (85.74 ± 3.85 pg/ml; $P < 0.01$ vs. DC group) and LCZ696 (77.52 ± 5.5 pg/ml; $P < 0.001$ vs. DC group).

On the other hand, in DC group ELISA assay revealed the substantial reduction ($P < 0.001$) in the serum level of anti-inflammatory marker IL-10 in comparison to normal control group (DC: 28.3 ± 2.44 pg/ml vs. NC: 61.67 ± 1.09 pg/ml). Interestingly, both LCZ696 or valsartan treated animals exhibited a pronounced restoration ($P < 0.05$) in the serum level of IL-10 compared with DC group and therefore an indication of existence of anti-inflammatory properties of the used drugs.

Effects of LCZ696 and valsartan on renal inflammatory biomarkers

The levels of inflammatory bio-markers such as TNF- α , IL-1 β , IL-6 and NF- κ B in the tissue homogenate were assessed by ELISA in control, diabetic and treated groups and presented in Fig. 3. When the levels of bio-markers were statistically compared between DC and NC group, a significant difference was observed in TNF- α (DC: 2.3 ± 0.17 pg/mg of protein vs. NC: 0.95 ± 0.15 pg/mg of protein; $P < 0.001$), IL-1 β (DC: 2.3 ± 0.28 pg/mg of protein vs. NC: 0.73 ± 0.05 pg/mg of protein; $P < 0.001$), IL-6 (DC: 2.15 ± 0.21 pg/mg of protein vs. NC: 1.23 ± 0.08 pg/mg of protein; $P < 0.001$) and NF- κ B (DC: 135 ± 10.38 pg/mg of protein vs. NC: 84.18 ± 9.19 pg/mg of protein; $P < 0.01$). In all diabetic groups treated with valsartan and LCZ696 for the duration of six weeks, the levels of bio-markers were reduced significantly ($P < 0.001$) in comparison to DC group.

Effects of LCZ696 and valsartan on oxidative stress biomarkers

As demonstrated in Fig. 4, the oxidative stress biomarkers including TBARs, GSH, CAT, SOD, GPx and GST were estimated in renal tissue of control, diabetic and treated groups (valsartan and LCZ696 over six weeks). The levels of renal TBARs in the DC group of rats were significantly ($p < 0.001$) increased and found to be 40.40 ± 3.88 nmol/mg protein as compared to NC group (15.36 ± 2.86 nmol/mg protein). Furthermore, with the other bio-markers of oxidative stress pertaining to DC and NC groups, significant difference was detected in GSH (DC: 20.05 ± 1.88 nmol/mg protein vs. NC: 34 ± 1.41 nmol/mg protein; $P < 0.001$), SOD (DC: 22.05 ± 0.58 U/mg protein vs. NC: 28.01 ± 0.83 U/mg

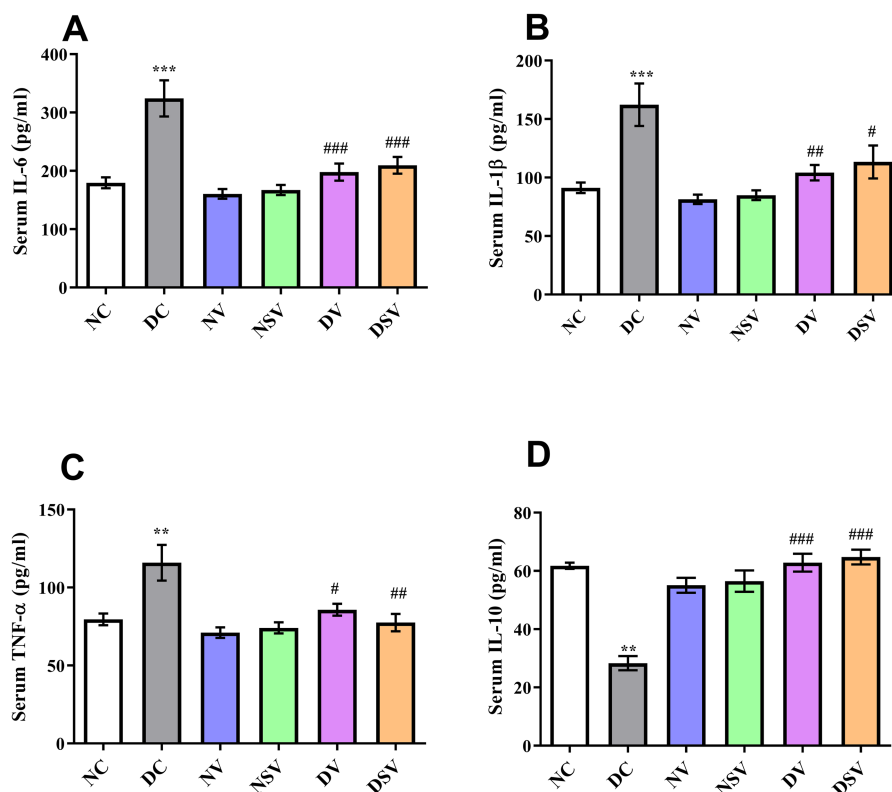


Figure 2 Effect of valsartan and LCZ696 on serum pro-inflammatory cytokines including interleukin-6 (IL-6) (A), interleukin-1 β (IL-1 β) (B), tumor necrosis factor- α (TNF- α) (C) and interleukin-10 (IL-10) (D) in STZ-induced diabetic rats. Data are expressed as the mean \pm SEM ($n = 6$ per group). Statistically significant difference: ** $p < 0.01$, *** $p < 0.001$ versus NC group and # $p < 0.05$, ## $p < 0.01$, ### $p < 0.001$ versus DC group. (ANOVA followed by Newman-Keuls multiple comparison test). NC, Normal Control; DC, Diabetic Control; NV, normal valsartan; NSV, normal sacubitril/valsartan; DV, diabetic valsartan; DSV, Diabetic sacubitril/valsartan.

Full-size DOI: 10.7717/peerj.9196/fig-2

protein; $P < 0.01$), CAT (DC: 0.59 ± 0.09 mmol/min/mg protein vs. NC: 3.27 ± 0.24 mmol/min/mg protein; $P < 0.001$), GPx (DC: 3.2 ± 0.38 U/mg protein vs. NC: 8.14 ± 0.43 U/mg protein; $P < 0.001$) and GST (DC: 12.99 ± 1.53 mmol/min/mg protein vs. NC: 23.78 ± 1.51 mmol/min/mg protein; $P < 0.001$).

Subsequent to 6-week's treatments with valsartan and LCZ696 in the diabetic rats, the observed level of TBARS were found statistically significant ($P < 0.01$ – 0.001) in comparison to DC group and values were 27.76 ± 2.135 nmol/mg protein for DV group and 19.47 ± 1.12 nmol/mg protein for DSV treated group. The level of GSH was significantly increased in STZ induced diabetes treated groups with valsartan (35.98 ± 1.71 nmol/mg protein; $P < 0.01$ vs. DC group) and LCZ696 (37 ± 2.15 nmol/mg protein; $P < 0.001$ vs. DC group). With the exception of SOD where a level of significance was observed with only DSV treated group ($P < 0.05$ vs. DC group), rest of three oxidative stress parameters in treated groups such as CAT, GPx and GST have shown a significant increase in respective anti-oxidant enzymatic levels in comparison to diabetes group ($P < 0.001$ vs. DC group).

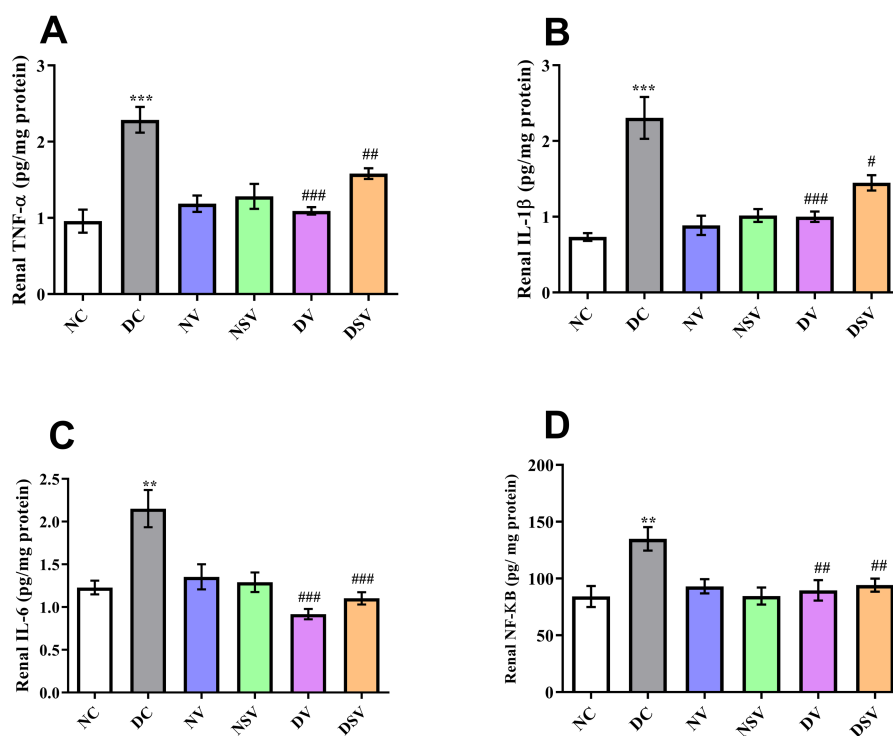


Figure 3 Effect of valsartan and LCZ696 on renal inflammatory bio-markers including tumor necrosis factor- α (TNF- α) (A), interleukin-1 β (IL-1 β) (B), interleukin-6 (IL-6) (C) and nuclear factor kappa-B (NF- κ B) (D) in STZ-induced diabetic rats ($n = 6$ per group). Statistically significant difference: $^{**}p < 0.01$, $^{***}p < 0.001$ versus NC group and $^{\#}p < 0.05$, $^{\#}p < 0.01$, $^{\#\#}p < 0.001$ versus DC group. (ANOVA followed by Newman-Keuls multiple comparison test). NC, Normal Control; DC, Diabetic Control; NV, normal valsartan; NSV, normal sacubitril/valsartan; DV, diabetic valsartan; DSV, Diabetic sacubitril/valsartan.

Full-size DOI: 10.7717/peerj.9196/fig-3

Interestingly, the time course therapy of only valsartan and LCZ696 in normal group of rats have not altered the levels of defensive anti-oxidant enzyme and found comparable to NC groups (Fig. 4).

Effect of LCZ696 and valsartan on renal cortex histology

Photomicrographs of H&E-stained renal sections of control, diabetic and treated groups are shown in Fig. 5. The sub-section of Fig. 5A has demonstrated the histology of renal cortex and revealed normal structure of the proximal convoluted tubules, distal convoluted tubules, Bowman's capsule, and glomeruli in the NC group. Figure 5B belongs to DC group and indicating that renal cortex is severely compromised with intense diffused interstitial inflammation, vacuolarization of renal cells, necrosis, tubular degeneration and fragmented glomeruli with an increase in Bowman's space. Figures 5C & 5D is affiliated with NV (valsartan) and NSV (LCZ696) groups and stained sections showed sections didn't show any alterations in tubular or glomerular tissues. Lastly in Figs. 5E & 5F H&E staining revealed that treatment of diabetic rats with valsartan and LCZ696 remarkably reduced renal injury with limited necrosis and inflammatory cells infiltration.

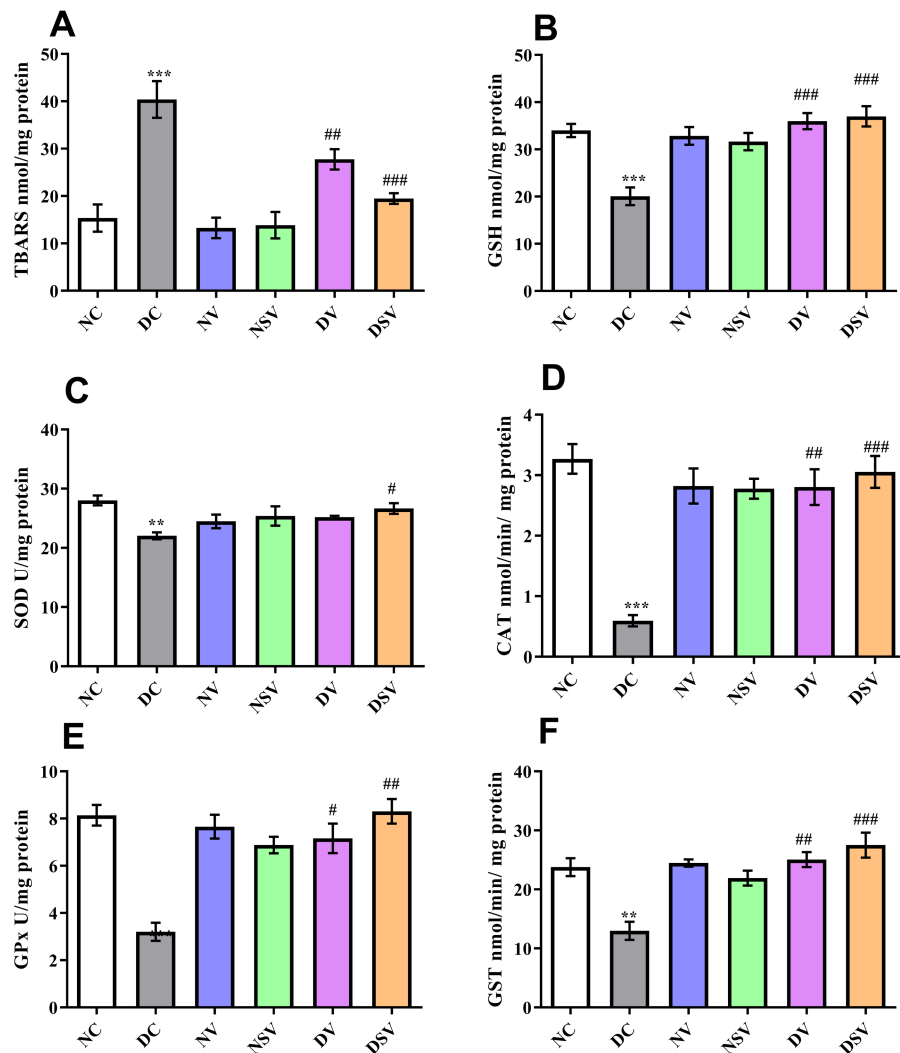


Figure 4 Effect of valsartan and LCZ696 on thiobarbituric acid reaction substances (TBARs) (A), glutathione (GSH) (B), superoxide dismutase (SOD) (C), catalase (CAT) (D), glutathione peroxidase (GPx) (E) and glutathione-S-transferase (GST) (F) in diabetic rats. Statistically significant difference: ** $p < 0.01$, *** $p < 0.001$ versus NC group and # $p < 0.05$, ## $p < 0.01$, ### $p < 0.001$ versus DC group ($n = 6$ per group). (ANOVA followed by Newman-Keuls multiple comparison test). NC, Normal Control; DC, Diabetic Control; NV, normal valsartan; NSV, normal sacubitril/valsartan; DV, diabetic valsartan; DSV, Diabetic sacubitril/valsartan.

Full-size DOI: 10.7717/peerj.9196/fig-4

Effects of LCZ696 and valsartan treatment on glomerular hypertrophy in diabetic rats

The glomerular volume values and leukocyte infiltration (score) are shown in Fig. 6. Our results showed that the mean glomerular volume was significantly greater (2 fold) in DC group than in NC group (NC, $0.5 \pm 0.08 \times 10^6 \mu\text{m}^3$ vs. DC, $0.99 \pm 0.15 \times 10^6 \mu\text{m}^3$; $p = 0.048$). Treatment of diabetic animals with valsartan (DV group) inhibited glomerular hypertrophy (-38%) in comparison with DC group. Interestingly, LCZ696 treatment (DSV group) significantly inhibited the increase in the mean glomerular volume compared

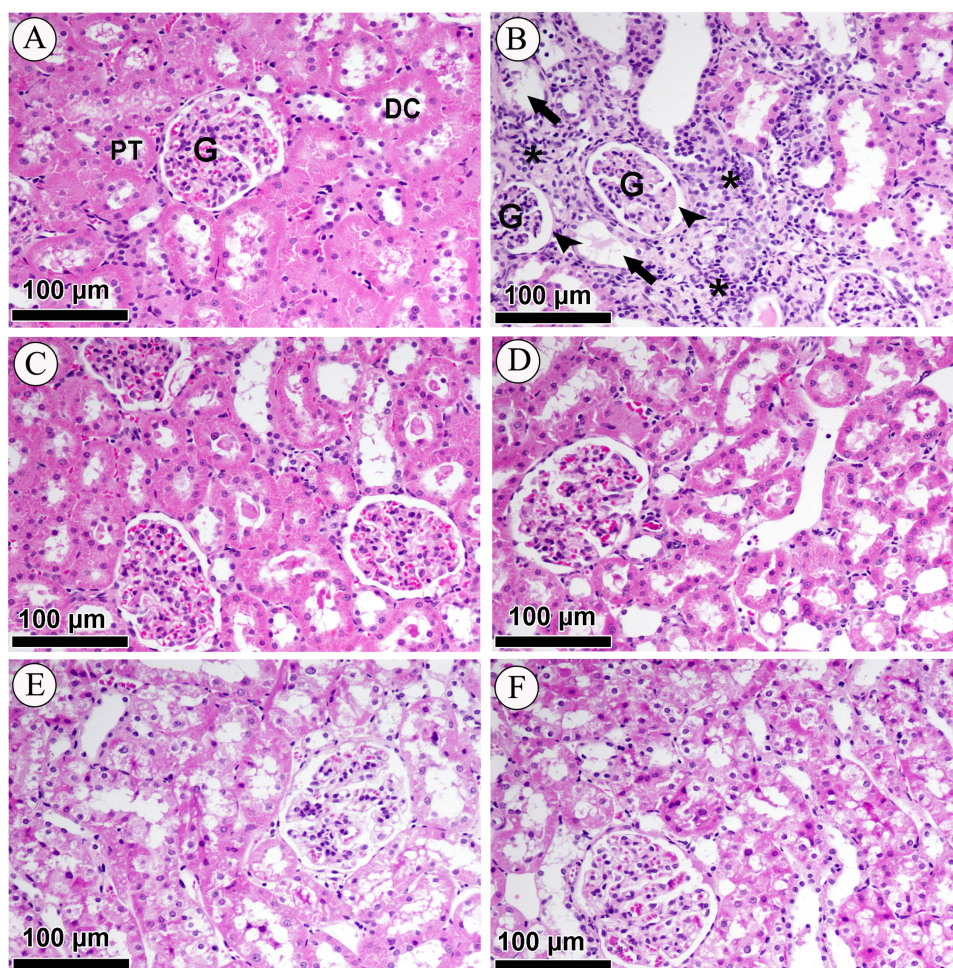


Figure 5 Effect of valsartan and LCZ696 on STZ-induced pathological changes in the kidney as indicated with H&E staining. (A) Section from the renal cortex of the NC group reveals the normal appearance of the proximal convoluted tubules (PT), distal convoluted tubules (DT), glomerulus (G) and Bowman's capsule. (B) DC group indicates renal cortex with intense diffused interstitial inflammation (asterisk), vacuolarization of renal cells (arrow), necrosis, tubular degeneration and fragmented glomeruli with an increase in Bowman's space (head arrows). (C) Normal rats-treated with valsartan (NV). (D) Normal rats treated with LCZ696 (NSV). (E) Diabetic rats-treated with valsartan (DV), (F) diabetic rats-treated with LCZ696 showed remarkably reduced renal injury with limited necrosis and inflammatory cells infiltration.

Full-size DOI: 10.7717/peerj.9196/fig-5

to untreated DC group. The inflammatory cells were evaluated by scoring the amount of infiltrates on a scale of 0–4 in H&E stained sections (Fig. 6B). Our results showed that leukocyte infiltration in DC group was significantly higher (15.8 fold) than that of NC animals. Leukocyte infiltration levels in diabetic rats treated with valsartan (DV group) and LCZ696 (DSV group) were significantly lower (–57% and –68% respectively) than that of DC animals.

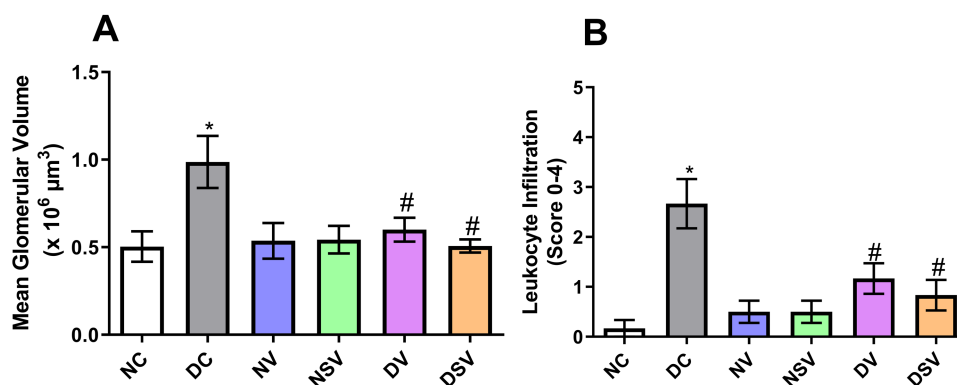


Figure 6 Effect of valsartan and LCZ696 on renal glomerular volume (A) and leukocyte infiltration score (B) in STZ-induced diabetic rats. Statistically significant difference: * $p < 0.05$ versus NC group, # $p < 0.05$ versus DC group. (ANOVA followed by Newman-Keuls multiple comparison test). NC, Normal Control; DC, Diabetic Control; NV, normal valsartan; NSV, normal sacubitril/valsartan; DV, diabetic valsartan; DSV, Diabetic sacubitril/valsartan.

Full-size DOI: 10.7717/peerj.9196/fig-6

Effect of LCZ696 and valsartan on glomerulosclerosis in diabetic rats

PAS-stained sections (Figs. 7A–7F) were used to quantify the percentage of glomerulosclerosis in DC group. The accumulated data from six individual rats from each group are shown in Fig. 7-G. Glomerulosclerosis was significantly increased in the DC group in comparison with the NC group (NC, 0.38 ± 0.058 vs. DC, 0.98 ± 0.13 ; $p = 0.004$). Interestingly, valsartan (DV) and LCZ696 (DSV) treatment have effectively prevented the rise in glomerulosclerosis in animals with diabetes.

DISCUSSION

In the present study, we demonstrated that a definite time course therapy (6 weeks) with LCZ696 in streptozotocin induced diabetic rats resulted in normalization of serum glucose, insulin, urea and creatinine levels. Furthermore, serum of treated diabetic rats with LCZ696 exhibited a decrease in inflammatory markers (TNF- α , IL-1 β , IL-6) and augmentation in anti-inflammatory (IL-10) cytokines levels and hence an indication of therapeutic role of LCZ696. To justify the protective role of LCZ696, tissue levels of inflammatory TNF- α , IL-1 β , IL-6 and NF- κ B were assessed and found to be decreased after 6 weeks of LCZ696 treatment in diabetic animals. Our ELISA studies relate to the measurement of anti-oxidants enzymes levels in kidney homogenate strongly supports the restoration of enzymatic activities of superoxide dismutase (SOD), catalase (CAT), glutathione peroxidase (GPx) and glutathione-S-transferase (GST) by an angiotensin receptor-neprilysin inhibitors i.e., LCZ696. In the histological sections of the kidney, prevention of renal injury was observed with limited necrosis and inflammatory cells infiltration.

Many scientific studies have linked DN with oxidative stress, inflammation and glomerulosclerosis (Mou *et al.*, 2019; Saito *et al.*, 1987). Approaches to mitigate these pathological processes can therefore be effective in limiting the progression of DN (Pickering *et al.*, 2018). It has been reported in several studies that persistent hyperglycemia provokes

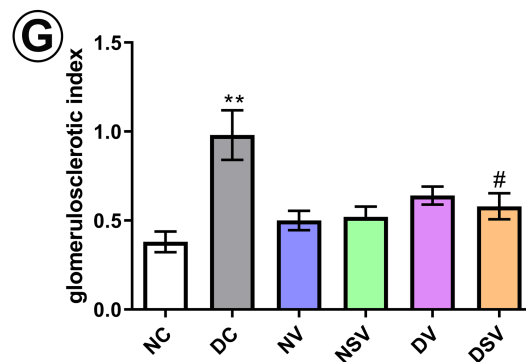
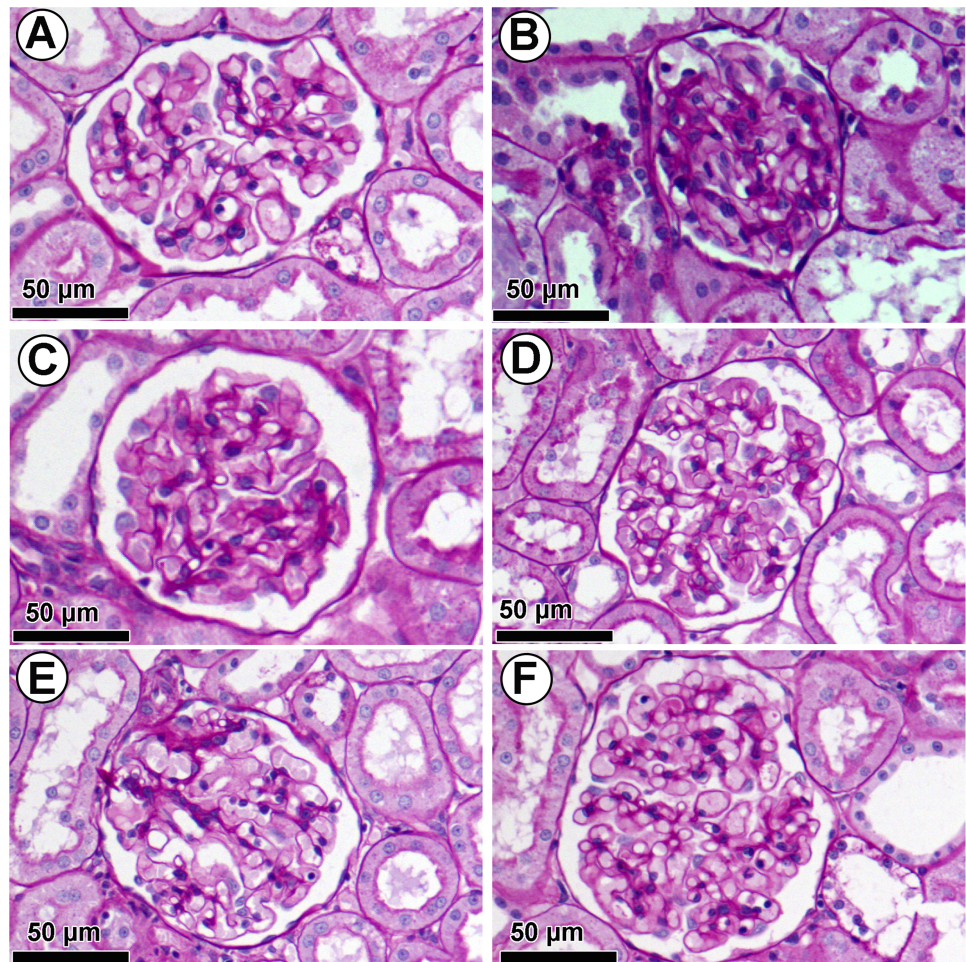


Figure 7 Effect of valsartan and LCZ696 on glomerulosclerosis in diabetic rats. Representative photomicrographs of glomeruli stained by periodic acid-Schiff (PAS, scale 50 μ m) from control (A), DC (B), normal valsartan (NV) (C), normal LCZ696 (NSV) (D), diabetic valsartan (DV) (E), and diabetic LCZ696 (DSV) (F)—treated rats. (G) Quantification of the glomerular matrix score. Statistically significant difference: ** $p < 0.01$ versus NC group, # $p < 0.05$ versus DC group. (ANOVA followed by Newman-Keuls multiple comparison test). NC, Normal Control; DC, Diabetic Control; NV, normal valsartan; NSV, normal sacubitril/valsartan; DV, diabetic valsartan; DSV, Diabetic sacubitril/valsartan.

Full-size DOI: 10.7717/peerj.9196/fig-7

the generation of reactive oxygen species (ROS) which contribute to oxidative damage to the macromolecules (lipids, carbohydrates, proteins, and nucleic acids) and eventually tissue injury. Persistent hyperglycemia causes (ROS) to be produced in cells which lead to oxidative damage to macromolecules (lipids, carbohydrates, proteins and nucleic acids) and ultimately to tissue injury (*Sifuentes-Franco et al., 2018*). Scientific literature have also provided evidence that production of proinflammatory cytokines contribute to a variety of pathological pathways which are linked to the development of DN (*Donate-Correa et al., 2015*). Similarly, this study supports certain existing findings as well as introduces other markers of elevated systemic and tissue oxidative injuries and inflammation. Moreover, DN has been confirmed in this study by altered creatinine and urea levels as markers of renal dysfunction, accompanied by structural changes including glomerular mesangial expansion and glomerulosclerosis. Along with these markers, there were elevations in the levels of the proinflammatory cytokines and lipid peroxidation as well as deficiency in the endogenous antioxidant molecules and enzyme activities in the diabetic animals.

Here, we observed that both LCZ696 and valsartan treatments could limit oxidative damage, lipid peroxidation and inflammation. Moreover, both therapies protected renal functions and prevented incidence of glomerulosclerosis in diabetic animals. Recently, it has been reported that simultaneous neprilysin inhibition and renin-angiotensin system modulations prevented diabetic nephropathy and our results confirmed the same (*Malek et al., 2019*). The therapeutic potential of LCZ696 has been reported by *Jing et al. (2017)* who found that LCZ696 more effective than valsartan therapy in delaying the progression of kidney disease in 5/6 nephrectomy model. Notably, evidence from animal and clinical studies suggested that RAS blockade was a well effective strategy in preventing renal injury through modulation of oxidative stress and inflammation levels (*Aminzadeh, Sato & Vaziri, 2012*). Additionally, this improvement in renal structure and functions after LCZ696 therapy may be based on augmentation of natriuretic peptides (NPs) mediated by inhibition of neprilysin. Many clinical and preclinical studies have shown that increased levels of vasoactive peptides including NPs prevent renal injury and delay the development of renal diseases (*Morikawa et al., 2009; Nojiri et al., 2015*). The antioxidant and anti-inflammatory properties of NPs may have these beneficial effect on the kidneys (*Judge et al., 2015*).

NF- κ B is a crucial transcription factor in immune responses and in the expression of specific DN cytokines (*Yi et al., 2017*). The results of the current study show that LCZ696 therapy inhibits the elevated levels of NF- κ B in diabetic animals. The results of this study are consistent with those of other previous studies (*Jing et al., 2017*), who found LCZ696 was more effective in delaying the progression of kidney disease than valsartan therapy alone. Unlike, the current study in which both drugs performed very similarly and this may be due to the difference in the two models, doses of both drugs and the duration of the experiment. Likewise, LCZ696 treatment for 8 weeks inhibited NF- κ B activation and consequently restricted cardiovascular and renal functional decline in the model of chronic kidney disease induced by 5/6 nephrectomy in male rats (*Suematsu et al., 2018*). In addition, it has been recently demonstrated that atrial natriuretic peptide (ANP) inhibits

the activation of NF- κ B pathway, thereby, reducing the production of ROS and cytokines release (*Mezzasoma, Antognelli & Talesa, 2016*).

Intriguingly, the present work shows that the treatment with LCZ696 can minimize the pathological manifestations of the DN as shown by a significant reduction of leukocyte infiltration, mean glomerular volume and glomerulosclerosis. Similarly, *Habibi et al. (2019)* have demonstrated that glomerular and tubular injury was attenuated by the combination of a neprilysin inhibitor (sacubitril) and angiotensin-II receptor blocker (valsartan) in the Zucker Obese rat. This improvement in renal structure might be attributed to the ability of LCZ696 in reducing oxidative stress and inflammation. Although similarities exist between the above studies and the current research, there is significant difference in the diabetic model that has been used to evaluate the therapeutic advantages of LCZ696. The efficacy of LCZ696 therapy was comparable in DN attenuation compared to valsartan alone, which could be attributed to the lack of specificity of these medications in the treatment of renal diseases or may be no synergistic effects of dual blockade of the angiotensin II receptor and neprilysin.

CONCLUSIONS

Taken together, our data provide an evidence that LCZ696 has therapeutic potential to restrict DN progression by inhibiting oxidative stress, NF- κ B mediated inflammation and glomerulosclerosis.

ADDITIONAL INFORMATION AND DECLARATIONS

Funding

The Deanship of Scientific Research at King Saud University, Riyadh, Saudi Arabia funded this work through the research group project number RGP-1440-085. The funders had no role in study design, data collection and analysis, decision to publish, or preparation of the manuscript.

Grant Disclosures

The following grant information was disclosed by the authors:

The Deanship of Scientific Research at King Saud University, Riyadh, Saudi Arabia: RGP-1440-085.

Competing Interests

The authors declare there are no competing interests.

Author Contributions

- Mohamed Mohany and Osamah M. Belali performed the experiments, prepared figures and/or tables, and approved the final draft.
- Ahmed Z. Alanazi analyzed the data, prepared figures and/or tables, and approved the final draft.

- Faleh Alqahtani analyzed the data, authored or reviewed drafts of the paper, and approved the final draft.
- Mohammed M. Ahmed and Salim S. Al-Rejaie conceived and designed the experiments, authored or reviewed drafts of the paper, and approved the final draft.

Animal Ethics

The following information was supplied relating to ethical approvals (i.e., approving body and any reference numbers):

The King Saud University Research Ethics Committee provided full approval for this research (SE-19-118).

Data Availability

The following information was supplied regarding data availability:

The raw measurements are available in [Supplemental File](#).

Supplemental Information

Supplemental information for this article can be found online at <http://dx.doi.org/10.7717/peerj.9196#supplemental-information>.

REFERENCES

- Alotaibi MR, Fatani AJ, Almnaizel AT, Ahmed MM, Abuohashish HM, Al-Rejaie SS. 2019.** *In vivo* assessment of combined effects of glibenclamide and losartan in diabetic rats. *Medical Principles and Practice* **28**:178–185 DOI [10.1159/000496104](https://doi.org/10.1159/000496104).
- Aminzadeh MA, Sato T, Vaziri ND. 2012.** Participation of endoplasmic reticulum stress in the pathogenesis of spontaneous glomerulosclerosis—role of intra-renal angiotensin system. *Translational Research* **160**:309–318 DOI [10.1016/j.trsl.2012.03.003](https://doi.org/10.1016/j.trsl.2012.03.003).
- Baltatzi M, Savopoulos C, Hatzitolios A. 2011.** Role of angiotensin converting enzyme inhibitors and angiotensin receptor blockers in hypertension of chronic kidney disease and renoprotection. Study results. *Hippokratia* **15**:27–32.
- Carlsson S, Andersson T, Ahlbom A. 2016.** Prevalence and incidence of diabetes mellitus: a nationwide population-based pharmaco-epidemiological study in Sweden. *Diabetic Medicine* **33**:1149–1150 DOI [10.1111/dme.12984](https://doi.org/10.1111/dme.12984).
- Chang AS, Hathaway CK, Smithies O, Kakoki M. 2016.** Transforming growth factor-beta1 and diabetic nephropathy. *American Journal of Physiology-Renal Physiology* **310**:F689–F696 DOI [10.1152/ajprenal.00502.2015](https://doi.org/10.1152/ajprenal.00502.2015).
- Donate-Correa J, Martin-Nunez E, Muros-de Fuentes M, Mora-Fernandez C, Navarro-Gonzalez JF. 2015.** Inflammatory cytokines in diabetic nephropathy. *Journal of Diabetes Research* **2015**:948417 DOI [10.1155/2015/948417](https://doi.org/10.1155/2015/948417).
- Duran-Salgado MB, Rubio-Guerra AF. 2014.** Diabetic nephropathy and inflammation. *World Journal of Diabetes* **5**:393–398 DOI [10.4239/wjd.v5.i3.393](https://doi.org/10.4239/wjd.v5.i3.393).
- Habibi J, Aroor AR, Das NA, Manrique-Acevedo CM, Johnson MS, Hayden MR, Nistala R, Wiedmeyer C, Chandrasekar B, DeMarco VG. 2019.** The combination

- of a neprilysin inhibitor (sacubitril) and angiotensin-II receptor blocker (valsartan) attenuates glomerular and tubular injury in the Zucker Obese rat. *Cardiovascular Diabetology* **18**:40 DOI [10.1186/s12933-019-0847-8](https://doi.org/10.1186/s12933-019-0847-8).
- Hameed I, Masoodi SR, Malik PA, Mir SA, Ghazanfar K, Ganai BA. 2018.** Genetic variations in key inflammatory cytokines exacerbates the risk of diabetic nephropathy by influencing the gene expression. *Gene* **661**:51–59 DOI [10.1016/j.gene.2018.03.095](https://doi.org/10.1016/j.gene.2018.03.095).
- Jessup M, Fox KA, Komajda M, McMurray JJ, Packer M. 2014.** PARADIGM-HF—the experts’ discussion. *New England Journal of Medicine* **371**:e15 DOI [10.1056/NEJMp1410203](https://doi.org/10.1056/NEJMp1410203).
- Jing W, Vaziri ND, Nunes A, Suematsu Y, Farzaneh T, Khazaeli M, Moradi H. 2017.** LCZ696 (Sacubitril/valsartan) ameliorates oxidative stress, inflammation, fibrosis and improves renal function beyond angiotensin receptor blockade in CKD. *American Journal of Translational Research* **9**:5473–5484.
- Judge P, Haynes R, Landray MJ, Baigent C. 2015.** Neprilysin inhibition in chronic kidney disease. *Nephrology, Dialysis, Transplantation* **30**:738–743 DOI [10.1093/ndt/gfu269](https://doi.org/10.1093/ndt/gfu269).
- Kanwar YS, Sun L, Xie P, Liu FY, Chen S. 2011.** A glimpse of various pathogenetic mechanisms of diabetic nephropathy. *Annual Review of Pathology* **6**:395–423 DOI [10.1146/annurev.pathol.4.110807.092150](https://doi.org/10.1146/annurev.pathol.4.110807.092150).
- Kato M, Natarajan R. 2014.** Diabetic nephropathy—emerging epigenetic mechanisms. *Nature Reviews Nephrology* **10**:517–530 DOI [10.1038/nrneph.2014.116](https://doi.org/10.1038/nrneph.2014.116).
- Liguori I, Russo G, Curcio F, Bulli G, Aran L, Della-Morte D, Gargiulo G, Testa G, Cacciatore F, Bonaduce D, Abete P. 2018.** Oxidative stress, aging, and diseases. *Clinical Interventions in Aging* **13**:757–772 DOI [10.2147/cia.s158513](https://doi.org/10.2147/cia.s158513).
- Lim A. 2014.** Diabetic nephropathy—complications and treatment. *International Journal of Nephrology and Renovascular Disease* **7**:361–381 DOI [10.2147/ijnrd.s40172](https://doi.org/10.2147/ijnrd.s40172).
- Lowry OH, Rosebrough NJ, Farr AL, Randall RJ. 1951.** Protein measurement with the Folin phenol reagent. *Journal of Biological Chemistry* **193**:265–275.
- Malek V, Sharma N, Sankrityayan H, Gaikwad AB. 2019.** Concurrent neprilysin inhibition and renin-angiotensin system modulations prevented diabetic nephropathy. *Life Sciences* **221**:159–167 DOI [10.1016/j.lfs.2019.02.027](https://doi.org/10.1016/j.lfs.2019.02.027).
- Mezzasoma L, Antognelli C, Talesa VN. 2016.** Atrial natriuretic peptide down-regulates LPS/ATP-mediated IL-1beta release by inhibiting NF-kB, NLRP3 inflammasome and caspase-1 activation in THP-1 cells. *Immunologic Research* **64**:303–312 DOI [10.1007/s12026-015-8751-0](https://doi.org/10.1007/s12026-015-8751-0).
- Morikawa S, Sone T, Tsuboi H, Mukawa H, Morishima I, Uesugi M, Morita Y, Numaguchi Y, Okumura K, Murohara T. 2009.** Renal protective effects and the prevention of contrast-induced nephropathy by atrial natriuretic peptide. *Journal of the American College of Cardiology* **53**:1040–1046 DOI [10.1016/j.jacc.2008.10.061](https://doi.org/10.1016/j.jacc.2008.10.061).
- Mou Z, Feng Z, Xu Z, Zhuang F, Zheng X, Li X, Qian J, Liang G. 2019.** Schisandrin B alleviates diabetic nephropathy through suppressing excessive inflammation and oxidative stress. *Biochemical and Biophysical Research Communications* **508**:243–249 DOI [10.1016/j.bbrc.2018.11.128](https://doi.org/10.1016/j.bbrc.2018.11.128).

- Najafian B, Basgen JM, Mauer M. 2002.** Estimating mean glomerular volume using two arbitrary parallel sections. *Journal of the American Society of Nephrology* 13:2697–2705 DOI [10.1097/01.asn.0000033381.53882.25](https://doi.org/10.1097/01.asn.0000033381.53882.25).
- Nojiri T, Hosoda H, Kimura T, Miura K, Ishikane S, Tokudome T, Shintani Y, Inoue M, Miyazato M, Okumura M, Kangawa K. 2015.** Atrial natriuretic peptide protects against cisplatin-induced acute kidney injury. *Cancer Chemotherapy and Pharmacology* 75:123–129 DOI [10.1007/s00280-014-2624-4](https://doi.org/10.1007/s00280-014-2624-4).
- Ojiako OA, Chikezie PC, Ogbuji AC. 2015.** Blood glucose level and lipid profile of alloxan-induced hyperglycemic rats treated with single and combinatorial herbal formulations. *Journal of Traditional and Complementary Medicine* 6:184–192.
- Peng X, Su H, Liang D, Li J, Ting WJ, Liao SC, Huang CY. 2019.** Ramipril and resveratrol co-treatment attenuates RhoA/ROCK pathway-regulated early-stage diabetic nephropathy-associated glomerulosclerosis in streptozotocin-induced diabetic rats. *Environmental Toxicology* 34:861–868 DOI [10.1002/tox.22758](https://doi.org/10.1002/tox.22758).
- Petrie JR, Guzik TJ, Touyz RM. 2018.** Diabetes, hypertension, and cardiovascular disease: clinical insights and vascular mechanisms. *Canadian Journal of Cardiology* 34:575–584 DOI [10.1016/j.cjca.2017.12.005](https://doi.org/10.1016/j.cjca.2017.12.005).
- Pickering RJ, Rosado CJ, Sharma A, Buksh S, Tate M, De Haan JB. 2018.** Recent novel approaches to limit oxidative stress and inflammation in diabetic complications. *Clinical & Translational Immunology* 7:e1016 DOI [10.1002/cti2.1016](https://doi.org/10.1002/cti2.1016).
- Pizzino G, Irrera N, Cucinotta M, Pallio G, Mannino F, Arcoraci V, Squadrito F, Altavilla D, Bitto A. 2017.** Oxidative stress: harms and benefits for human health. *Oxidative Medicine and Cellular Longevity* 2017:8416763 DOI [10.1155/2017/8416763](https://doi.org/10.1155/2017/8416763).
- Saito T, Sumithran E, Glasgow EF, Atkins RC. 1987.** The enhancement of aminonucleoside nephrosis by the co-administration of protamine. *Kidney International* 32:691–699 DOI [10.1038/ki.1987.262](https://doi.org/10.1038/ki.1987.262).
- Sharma M, Nazareth I, Petersen I. 2016.** Trends in incidence, prevalence and prescribing in type 2 diabetes mellitus between 2000 and 2013 in primary care: a retrospective cohort study. *BMJ Open* 6:e010210 DOI [10.1136/bmjopen-2015-010210](https://doi.org/10.1136/bmjopen-2015-010210).
- Sifuentes-Franco S, Padilla-Tejeda DE, Carrillo-Ibarra S, Miranda-Diaz AG. 2018.** Oxidative stress, apoptosis, and mitochondrial function in diabetic nephropathy. *International Journal of Endocrinology* 2018:1875870 DOI [10.1155/2018/1875870](https://doi.org/10.1155/2018/1875870).
- Singh VP, Bali A, Singh N, Jaggi AS. 2014.** Advanced glycation end products and diabetic complications. *The Korean Journal of Physiology & Pharmacology* 18:1–14 DOI [10.4196/kjpp.2014.18.1.1](https://doi.org/10.4196/kjpp.2014.18.1.1).
- Skupien J, Smiles AM, Valo E, Ahluwalia TS, Gyorgy B, Sandholm N, Croall S, Lajer M, McDonnell K, Forsblom C, Harjutsalo V, Marre M, Galecki AT, Tregouet DA, Wu CY, Mychaleckyj JC, Nickerson H, Pragnell M, Rich SS, Pezzolesi MG, Hadjadj S, Rossing P, Groop PH, Krolewski AS. 2019.** Variations in risk of end-stage renal disease and risk of mortality in an international study of patients with type 1 diabetes and advanced nephropathy. *Diabetes Care* 42:93–101 DOI [10.2337/dc18-1369](https://doi.org/10.2337/dc18-1369).

- Suematsu Y, Jing W, Nunes A, Kashyap ML, Khazaeli M, Vaziri ND, Moradi H. 2018.** LCZ696 (Sacubitril/Valsartan), an angiotensin-receptor neprilysin inhibitor, attenuates cardiac hypertrophy, fibrosis, and vasculopathy in a rat model of chronic kidney disease. *Journal of Cardiac Failure* **24**:266–275 DOI [10.1016/j.cardfail.2017.12.010](https://doi.org/10.1016/j.cardfail.2017.12.010).
- Sulaiman MK. 2019.** Diabetic nephropathy: recent advances in pathophysiology and challenges in dietary management. *Diabetology & Metabolic Syndrome* **11**:7 DOI [10.1186/s13098-019-0403-4](https://doi.org/10.1186/s13098-019-0403-4).
- Suryavanshi SV, Kulkarni YA. 2017.** NF-kappaB: a potential target in the management of vascular complications of diabetes. *Frontiers in Pharmacology* **8**:798 DOI [10.3389/fphar.2017.00798](https://doi.org/10.3389/fphar.2017.00798).
- Vallon V, Komers R. 2011.** Pathophysiology of the diabetic kidney. *Compr Physiol* **1**:1175–1232 DOI [10.1002/cphy.c100049](https://doi.org/10.1002/cphy.c100049).
- Velasquez MT, Striffler JS, Abraham AA, OEt Michaelis, Scalbert E, Thibault N. 1997.** Perindopril ameliorates glomerular and renal tubulointerstitial injury in the SHR/N-corpulent rat. *Hypertension* **30**:1232–1237 DOI [10.1161/01.hyp.30.5.1232](https://doi.org/10.1161/01.hyp.30.5.1232).
- Yang X. 2019.** Design and optimization of crocetin loaded PLGA nanoparticles against diabetic nephropathy via suppression of inflammatory biomarkers: a formulation approach to preclinical study. *Drug Delivery* **26**:849–859 DOI [10.1080/10717544.2019.1642417](https://doi.org/10.1080/10717544.2019.1642417).
- Yang T, Xu C. 2017.** Physiology and pathophysiology of the intrarenal renin-angiotensin system: an update. *Journal of the American Society of Nephrology* **28**:1040–1049 DOI [10.1681/asn.2016070734](https://doi.org/10.1681/asn.2016070734).
- Yi H, Peng R, Zhang LY, Sun Y, Peng HM, Liu HD, Yu LJ, Li AL, Zhang YJ, Jiang WH, Zhang Z. 2017.** LincRNA-Gm4419 knockdown ameliorates NF-kappaB/NLRP3 inflammasome-mediated inflammation in diabetic nephropathy. *Cell Death & Disease* **8**:e2583 DOI [10.1038/cddis.2016.451](https://doi.org/10.1038/cddis.2016.451).
- Zhao Y, Ma R, Yu X, Li N, Zhao X, Yu J. 2019.** AHU377+Valsartan (LCZ696) modulates Renin-Angiotensin System (RAS) in the cardiac of female spontaneously hypertensive rats compared with valsartan. *Journal of Cardiovascular Pharmacology and Therapeutics* **24**:450–459 DOI [10.1177/1074248419838503](https://doi.org/10.1177/1074248419838503).
- Zhou G, Cheung AK, Liu X, Huang Y. 2014.** Valsartan slows the progression of diabetic nephropathy in db/db mice via a reduction in podocyte injury, and renal oxidative stress and inflammation. *Clinical Science* **126**:707–720 DOI [10.1042/cs20130223](https://doi.org/10.1042/cs20130223).