


See editorial on pages 679–680 in this issue.

Low interrater reliability of brachial plexus MRI in chronic inflammatory neuropathies

Marieke H. J. van Rosmalen MD¹ | H. Stephan Goedee MD, PhD¹ |
 Anouk van der Gijp MD, PhD² | Theo D. Witkamp MD² |
 Martijn Froeling MSc, PhD²  | Jeroen Hendrikse MD, PhD² |
 W. Ludo van der Pol MD, PhD¹

¹Department of Neurology and Neurosurgery, University Medical Center Utrecht Brain Center, Utrecht University, The Netherlands

²Department of Radiology, University Medical Center Utrecht, Utrecht, The Netherlands

Correspondence

W. Ludo van der Pol, Department of Neurology and Neurosurgery, University Medical Center Utrecht Brain Center, Heidelberglaan 100, 3508GA Utrecht, The Netherlands.
 Email: w.l.vanderpol@umcutrecht.nl

Funding information

Prinses Beatrix Spierfonds

Abstract

Introduction: Magnetic resonance imaging of the brachial plexus shows nerve thickening in approximately half of the patients with chronic inflammatory demyelinating polyneuropathy (CIDP) and multifocal motor neuropathy (MMN). The reliability of qualitative evaluation of brachial plexus MRI has not been studied previously.

Methods: We performed an interrater study in a retrospective cohort of 19 patients with CIDP, 17 patients with MMN, and 14 controls. The objective was to assess interrater variability between radiologists by using a predefined scoring system that allowed the distinction of no, possible, or definite nerve thickening.

Results: Raters agreed in 26 of 50 (52%) brachial plexus images; κ -coefficient was 0.30 (SE 0.08, 95% confidence interval 0.14–0.46, $P < .0005$).

Discussion: Our results provide evidence that interrater reliability of qualitative evaluation of brachial plexus MRI is low. Objective criteria for abnormality are required to optimize the diagnostic value of MRI for inflammatory neuropathies.

KEYWORDS

brachial plexus, chronic inflammatory demyelinating polyneuropathy, imaging, magnetic resonance imaging, multifocal motor neuropathy

1 | INTRODUCTION

Magnetic resonance imaging (MRI) of the brachial plexus can be helpful to diagnose inflammatory neuropathies such as chronic

inflammatory demyelinating polyneuropathy (CIDP) and multifocal motor neuropathy (MMN). The diagnostic challenge in CIDP and MMN is to distinguish these disorders from those that do not respond to immunomodulatory treatment.

Diagnostic criteria for CIDP and MMN primarily rely on clinical phenotype and specific nerve conduction study (NCS) abnormalities.^{1,2} Brachial plexus MRI can be of diagnostic value when NCS is inconclusive despite high clinical suspicion.

Abbreviations: CI, confidence interval; CIDP, chronic inflammatory demyelinating polyneuropathy; MMN, multifocal motor neuropathy; NCS, nerve conduction study; T, Tesla; UMC, University Medical Center.

This is an open access article under the terms of the Creative Commons Attribution-NonCommercial-NoDerivs License, which permits use and distribution in any medium, provided the original work is properly cited, the use is non-commercial and no modifications or adaptations are made.

© 2020 The Authors. *Muscle & Nerve* published by Wiley Periodicals, Inc.

Magnetic resonance imaging abnormalities associated with CIDP and MMN are thickening of roots, plexus, and nerves, often combined with T2 hyperintensity.³⁻⁵ Previous MRI studies were exclusively qualitative and lacked clear definitions of abnormality.⁶⁻⁸ To clarify the value of brachial plexus MRI in the diagnostic workup of inflammatory neuropathies, we assessed interrater variability.

2 | MATERIALS AND METHODS

2.1 | Study design

We performed an interrater study in a retrospective cohort of patients with CIDP and MMN and controls.

2.2 | Participants

Patients aged 18 to 85 years with CIDP and MMN according to the European Federation of Neurological Societies/Peripheral Nerve Society criteria^{1,2} who were seen at the University Medical Center (UMC) Utrecht and who underwent brachial plexus MRI between September 2016 and September 2018 were selected for this study. Brachial plexus MRI from patients with other causes of peripheral motor deficits were used as controls.

2.3 | Clinical data

We obtained clinical data from electronic patient records including age; sex; and time from onset of symptoms to diagnosis in months, defined as disease duration. All patients gave informed consent. This study was approved by the Medical Ethical Committee of the UMC Utrecht.

2.4 | Magnetic resonance imaging protocol and assessment

Brachial plexus MRI was performed for diagnostic purposes and was reassessed for this study. Magnetic resonance imaging was performed on 1.5 and 3.0 Tesla (T) scanners (Philips, Best, the Netherlands). The MRI protocol consisted of a fat-suppressed coronal three-dimensional T2-weighted short- τ inversion recovery with the following parameters: field of view = $250 \times 320 \times 170$ mm³, matrix size = 208×269 , voxel size = $0.6 \times 0.6 \times 1$ mm³, echo time = 259 ms, repetition time = 2200 ms, turbo spin echo factor = 95, acquisition time = 06:16 minutes. In postprocessing, a coronal slab maximum intensity projection was created.

We developed a scoring system with categories of abnormality of nerve thickening (Figure S1). Scans were scored with a 3-point scale (1 = no nerve thickening, 2 = possible nerve thickening, 3 = definite

nerve thickening). Examples of abnormality were selected from a subset of all included patients by two experienced (2 years and > 30 years) neuroradiologists (A.G., T.D.W.) via discussion and consensus. The examples were saved with the Teaching Tool in PACS IDS7 19.3.12 (Sectra AB, Linköping, Sweden). With this tool, raters can scroll through images and compare them with the target image. The radiologists scored all images in PACS IDS7. The degree of abnormality was assessed by the overall impression of the entire brachial plexus. Images were presented in the same order and on screens with similar resolution to raters who were blinded to clinical status of the participants.

2.5 | Statistical analysis

All statistical analysis was performed in SPSS Statistics (version 25; IBM, Armonk, New York). To analyze patient characteristics, we used independent samples *t* tests. The interrater variability of qualitative assessments of brachial plexus MRI was determined by Cohen's κ as coefficient for measure of agreement because we evaluated categorized data with limited categories. We interpreted a κ value of 0 to 0.20 as no agreement, 0.21 to 0.39 as minimal, 0.40 to 0.59 as weak, 0.60 to 0.79 as moderate, 0.80 to 0.90 as strong, and > 0.90 as almost perfect agreement.⁹ $P < .05$ was considered significant. We calculated sensitivity and specificity per rater using receiver operating characteristic curves.

3 | RESULTS

3.1 | Participants

We identified 36 patients with a chronic inflammatory neuropathy (CIDP = 19, MMN = 17) and 14 disease controls (motor neuron disease = 4, Hirayama disease = 3, ulnar neuropathy = 1, neurogenic thoracic outlet syndrome = 1, polyneuropathy in Sjögren disease = 1, brachial plexopathy caused by alcohol abuse = 1, cervical myelopathy = 1, lumbar polyradiculopathy = 1, chronic idiopathic axonal polyneuropathy = 1). Patient characteristics are presented in Table 1. Data were acquired for 26 participants by using 1.5 T MRI scanners and for 24 participants by using 3.0 T MRI scanners.

3.2 | Interrater variability

Raters agreed in 26 of 50 (52%) brachial plexus images when using three categories for abnormality (Table 2). Using the dichotomy normal-abnormal (ie, category 1 vs categories 2 and 3), raters agreed in 36 of 50 (72%) cases. The κ coefficient was 0.44 (SE 0.13, 95% confidence interval [CI] 0.19–0.67, $P = .002$); κ coefficients for both methods indicate a minimal to weak level of agreement between raters.

TABLE 1 Patient characteristics

Patient characteristics	Inflammatory neuropathy			Controls Total	Level of significance
	Total	CIDP	MMN		
No. of participants	36	19	17	14	
Age, y (SD)	59.7 (14.9)	69.9 (9.0)	48.3 (11.7)	55.2 (16.5)	NS
Men (%)	26 (72)	12 (63)	14 (82)	7 (50)	NS
Disease duration, mo (SD)	43.3 (47.7)	45.0 (48.7)	41.5 (48.0)	39.1 (37.0)	NS

Abbreviations: CIDP, chronic inflammatory demyelinating polyneuropathy; MMN, multifocal motor neuropathy; NS, not significant.

TABLE 2 Assessment of brachial plexus MRI by two raters

Raters and cases	Category 1	Category 2	Category 3	Total (%)	Cohen's κ (SE)	95% CI	P value
Rater 1 No. of cases	25	17	8	50			
Rater 2 No. of cases	21	4	25	50			
Cases of agreement	16	2	8	26 (52)	0.30 (0.08)	0.14–0.46	<.00001

Abbreviation: CI, confidence interval.

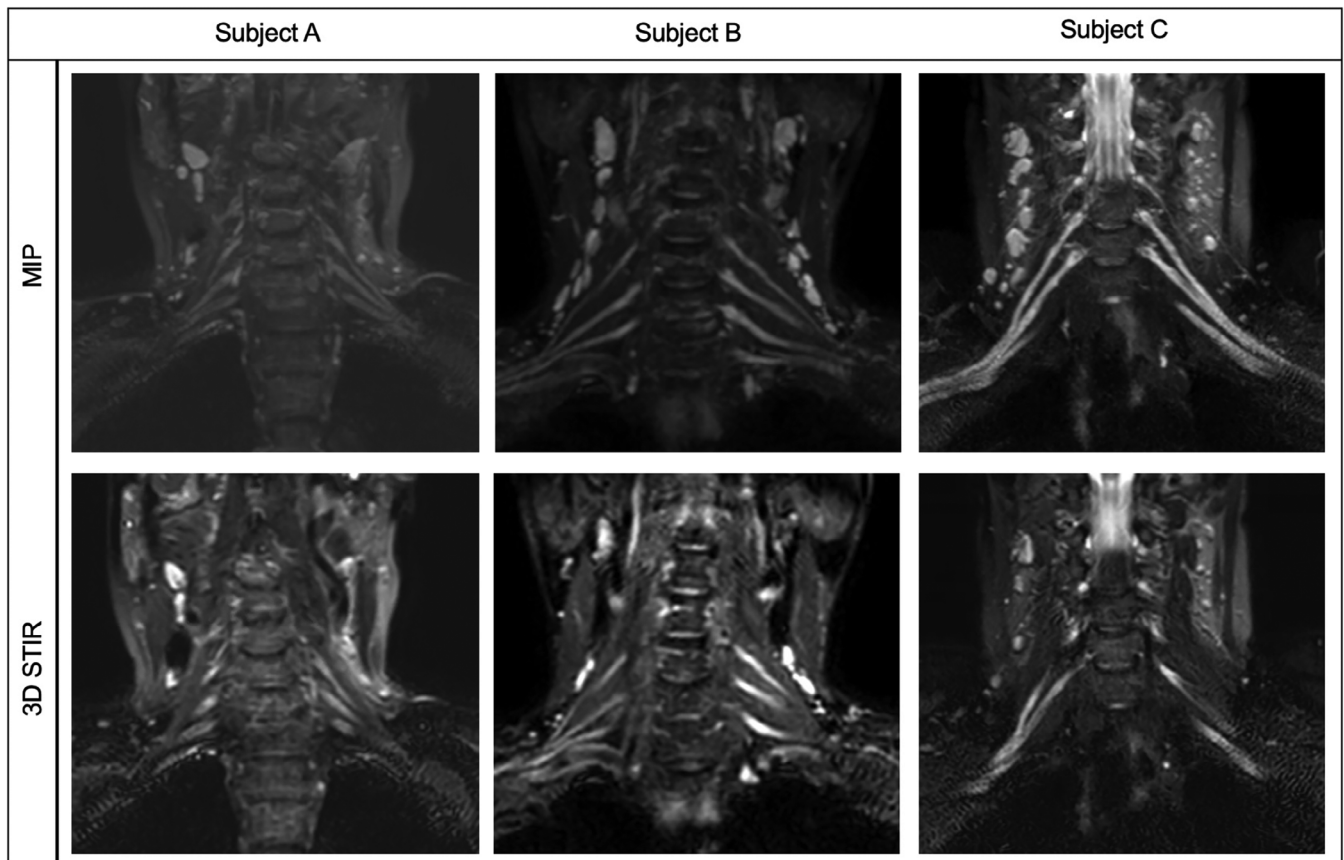


FIGURE 1 Examples of interrater disagreement. Subject A was rated as “possible nerve thickening” by rater 1 and as “no nerve thickening” by rater 2. Subjects B and C were rated as “possible nerve thickening” by rater 1 and as “definite nerve thickening” by rater 2. This figure illustrates the difficulties in classifying subtle nerve thickening as either normal or thickening. Each subject represents an example of a maximum intensity projection (MIP) and three-dimensional short-tau inversion recovery (STIR) image

In 15 of 50 (30%) cases, rater 1 scored "possible nerve thickening" while rater 2 scored "no nerve thickening" or "definite nerve thickening." Discrepancies between raters seem, therefore, to be caused mostly by the appreciation and distinction of subtle abnormalities (Figure 1). Sensitivity was 61% and 75% and specificity was 79% and 86% for rater 1 and rater 2, respectively. Area under the curve was 0.698 (95% CI 0.539–0.858) for rater 1 and 0.804 (95% CI 0.667–0.940) for rater 2 (Figure S2).

The κ coefficients for assessment of images performed with 1.5 T and 3.0 T scanners were 0.26 (SE 0.13, 95% CI 0.00–0.56, $P = .032$) and 0.26 (SE 0.10, 95% CI 0.07–0.49, $P = .012$), respectively.

4 | DISCUSSION

In this study, raters agreed in 26 of 50 (52%) images, indicating poor reliability. Although agreement was better when data were dichotomized (normal vs abnormal), our results provide evidence that difficulties are related mostly to distinguishing more subtle cases of nerve thickening. Objective criteria for abnormality are required to avoid false positive and false negative results and to optimize the diagnostic value of MRI for inflammatory neuropathies.

The poor agreement may have several explanations. We cannot exclude the possibility that the difference in radiological experience between raters underlies the poor reliability. However, the assessors work in the same department and had comparable training in neuroradiology. This may be an indication that interrater variability could have been even higher had we selected radiologists from different hospitals and training backgrounds. Furthermore, the gap in experience represents current clinical practice. Second, assessors of brachial plexus MRI may lack clear reference points, in particular when abnormalities are two-sided, which may have caused best-guessing, particularly in cases from category 2. Third, three categories in the scoring model may have been one category too many. Analysis of dichotomized data led to a slightly higher κ but still indicated a poor level of agreement. Fourth, differences between scanners may partially explain the poor level of agreement. However, despite small groups, our results showed similar agreement with overlapping CIs for assessment of images performed on 1.5 T and 3.0 T scanners.

Earlier studies in chronic inflammatory neuropathies and plexus MRI focused on characteristics, distribution, and prevalence of abnormalities.^{3–5} This study addresses the reproducibility of assessment of such abnormalities. Quantification of these abnormalities represents an obvious approach to improve reproducibility and reliability of assessment. Quantification of nerve size allows the identification of patients with CIDP or MMN with high sensitivity and reasonable specificity, as shown in ultrasound studies.¹⁰ Few studies have explored the use of quantitative MRI in chronic inflammatory neuropathies. One report described cutoff values of 5.0 mm for roots C6, C7, and C8 to distinguish patients with CIDP ($n = 14$) from controls ($n = 10$).¹¹ Sensitivity and specificity were not reported, probably because of the small sample. Researchers in another recent study used the diameter of the ganglia and nerve roots of C5 to T1¹² and found

these to be significantly larger in patients with CIDP ($n = 14$) than in controls ($n = 9$), providing evidence to support the feasibility of this approach. However, sensitivity of ganglia measurements was only 48%, despite a specificity of 92%. Sensitivity of root measurements was slightly better at 62%, with 82% specificity. Interrater agreement was good for both ganglia and root measurements. One study did not find any differences in cervical nerve root diameter between patients with CIDP ($n = 15$) and controls ($n = 29$).¹³ Three-dimensional volume measurements may be another approach. Researchers in a recent study showed increased volume of peripheral nerves in patients with CIDP ($n = 13$) compared with controls ($n = 12$) using MRI with diffusion-weighted whole-body imaging with background body signal suppression.¹⁴ Combined, these studies provide evidence of the potential of a quantitative approach to improve diagnostic reliability.

The potential of imaging techniques for diagnosis of CIDP and MMN has been demonstrated in several recent studies.^{15–18} In one of these studies, MRI was abnormal in 22 of 38 (58%) patients with CIDP without definite electrodiagnostic criteria, which led to an adjustment of final diagnosis to definite CIDP in seven patients.¹⁵ Additional studies are required to determine reproducible and reliable quantification techniques with optimal sensitivity and specificity to ensure proper diagnosis of treatment-responsive polyneuropathies.

CONFLICT OF INTEREST

The authors declare no conflicts of interest.

ETHICAL PUBLICATION STATEMENT

We confirm that we have read the Journal's position on issues involved in ethical publication and affirm that this report is consistent with those guidelines.

ORCID

Martijn Froeling  <https://orcid.org/0000-0003-3841-0497>

REFERENCES

- van den Bergh PYK, Hadden RDM, Bouche P, et al. European Federation of Neurological Societies/Peripheral Nerve Society Guideline on management of chronic inflammatory demyelinating polyradiculoneuropathy: report of a joint task force of the European Federation of Neurological Societies and the Peripher. *Eur J Neurol*. 2010; 17:356–363.
- Van Schaik IN, Léger JM, Nobile-Orazio E, et al. European Federation of Neurological Societies/Peripheral Nerve Society Guideline on management of multifocal motor neuropathy. Report of a Joint Task Force of the European Federation of Neurological Societies and the Peripheral Nerve Society-First revis. *J Peripher Nerv Syst*. 2010;15: 295–301.
- van Es HW, van den Berg LH, Franssen H, et al. Magnetic resonance imaging of the brachial plexus in patients with multifocal motor neuropathy. *Neurology*. 1997;48:1218–1224.
- Rajabally YA, Knopp MJ, Martin-Lamb D, Morlese J. Diagnostic value of MR imaging in the Lewis-Sumner syndrome: a case series. *J Neurol Sci*. 2014;342:182–185.
- Castillo M, Mukherji SK. MRI of enlarged dorsal ganglia, lumbar nerve roots, and cranial nerves in polyradiculoneuropathies. *Neuroradiology*. 1996;38:516–520.


6. Adachi Y, Sato N, Okamoto T, et al. Brachial and lumbar plexuses in chronic inflammatory demyelinating polyradiculoneuropathy: MRI assessment including apparent diffusion coefficient. *Neuroradiology*. 2011;53:3-11.
7. Shibuya K, Sugiyama A, Ito S, et al. Reconstruction magnetic resonance neurography in chronic inflammatory demyelinating polyneuropathy. *Ann Neurol*. 2015;77:333-337.
8. Jongbloed BA, Bos JW, Rutgers D, van der Pol WL, van den Berg LH. Brachial plexus magnetic resonance imaging differentiates between inflammatory neuropathies and does not predict disease course. *Brain Behav*. 2017;7:e00632.
9. McHugh ML. Interrater reliability: the kappa statistic. *Biochem Med (Zagreb)*. 2012;22:276-282.
10. Goedee HS, Van Der Pol WL, Van Asseldonk JTH, et al. Diagnostic value of sonography in treatment-naïve chronic inflammatory neuropathies. *Neurology*. 2017;88:143-151.
11. Tazawa K-I, Matsuda M, Yoshida T, et al. Spinal nerve root hypertrophy on MRI: clinical significance in the diagnosis of chronic inflammatory demyelinating polyradiculoneuropathy. *Intern Med*. 2008;47:2019-2024.
12. Hiwatashi A, Togao O, Yamashita K, et al. Evaluation of chronic inflammatory demyelinating polyneuropathy: 3D nerve-sheath signal increased with inked rest-tissue rapid acquisition of relaxation enhancement imaging (3D SHINKEI). *Eur J Radiol*. 2017;27:447-453.
13. Tanaka K, Mori N, Yokota Y, Suenaga T. MRI of the cervical nerve roots in the diagnosis of chronic inflammatory demyelinating polyradiculoneuropathy: a single-institution, retrospective case-control study. *BMJ Open*. 2013;3:e003443.
14. Ishikawa T, Asakura K, Mizutani Y, et al. MR neurography for the evaluation of CIDP. *Muscle Nerve*. 2017;55:483-489.
15. Fargeot G, Viala K, Theaudin M, et al. Diagnostic usefulness of plexus MRI in chronic inflammatory demyelinating polyradiculopathy without electrodiagnostic criteria of demyelination. *Eur J Neurol*. 2019;26(4):631-638.
16. Jomier F, Bousson V, Viala K, et al. Prospective study of the additional benefit of plexus Magnetic resonance imaging in the diagnosis of chronic inflammatory demyelinating polyneuropathy. *Eur J Neurol*. 2020;27(1):181-187.
17. Goedee HS, Jongbloed BA, van Asseldonk J-TH, et al. A comparative study of brachial plexus sonography and magnetic resonance imaging in chronic inflammatory demyelinating neuropathy and multifocal motor neuropathy. *Eur J Neurol*. 2017;24:1307-1313.
18. Goedee HS, Herraets IJT, Visser LH, et al. Nerve ultrasound can identify treatment-responsive chronic neuropathies without electrodiagnostic features of demyelination. *Muscle Nerve*. 2019;60(4):415-419.

SUPPORTING INFORMATION

Additional supporting information may be found online in the Supporting Information section at the end of this article.

How to cite this article: van Rosmalen MHJ, Goedee HS, van der Gijp A, et al. Low interrater reliability of brachial plexus MRI in chronic inflammatory neuropathies. *Muscle Nerve*. 2020;61:779-783. <https://doi.org/10.1002/mus.26821>

Ultrasound can differentiate inclusion body myositis from disease mimics

Kristofoor E. Leeuwenberg MD¹ | Nens van Alfen MD, PhD¹ |
 Lisa Christopher-Stine MD, MPH² | Julie J. Paik MD, MHS² | Eleni Tiniakou MD² |
 Christopher Mecoli MD, MHS² | Jonne Doorduyn PhD¹ |
 Christiaan G.J. Saris MD, PhD¹ | Jemima Albayda MD² 

¹Department of Neurology, Radboud University Medical Center, Donders Institute for Brain Cognition and Behaviour, Nijmegen, The Netherlands

²School of Medicine, Division of Rheumatology, Johns Hopkins University, Baltimore, Maryland

Correspondence

Jemima Albayda MD, School of Medicine, Division of Rheumatology, Johns Hopkins

Abstract

Introduction: The diagnosis of inclusion body myositis (IBM) can be challenging, and its presentation can be confused with other forms of myositis or neuromuscular disorders. In this study we evaluate the ability of quantitative muscle ultrasound to differentiate between IBM and mimicking diseases.

Methods: Patients 50 years of age and older were included from two specialty centers. Muscle echogenicity and muscle thickness of four characteristically involved