

Research Article

Beneficial Effects of Crocin against Depression via Pituitary Adenylate Cyclase-Activating Polypeptide

Linyu Lu ¹, Die Wu ¹, Kai Wang ¹, Juanjuan Tang ¹ and Gang Chen ^{2,3}

¹School of Medicine and Holistic Integrative Medicine, Nanjing University of Chinese Medicine, Nanjing 210023, China

²Interdisciplinary Institute for Personalized Medicine in Brain Disorders, and Research Center for Formula and Syndromes, Jinan University, Guangzhou 510632, China

³Co-innovation Center of Neuroregeneration, Nantong University, Nantong, Jiangsu 226001, China

Correspondence should be addressed to Juanjuan Tang; tangjj@njucm.edu.cn and Gang Chen; chengang@jnu.edu.cn

Received 4 March 2020; Revised 17 May 2020; Accepted 26 May 2020; Published 25 June 2020

Academic Editor: Alessandro Martorana

Copyright © 2020 Linyu Lu et al. This is an open access article distributed under the Creative Commons Attribution License, which permits unrestricted use, distribution, and reproduction in any medium, provided the original work is properly cited.

Depression is one of the foremost psychological illness, and the exact mechanism is unclear. Recent studies have reported that the pituitary adenylate cyclase-activating polypeptide (PACAP) signaling pathway is involved in the progression of depression. In the present study, we extracted crocin from the traditional Chinese medicine (TCM), *Gardenia jasminoides* Ellis, to evaluate its antidepressant effect and clarify the underlying mechanism. Here, we established a chronic unpredictable mild stress (CUMS) mouse model to assess whether crocin can improve depression-like behavior in an open field test (OFT), tail suspension test (TST), forced swimming test (FST), and sucrose preference test (SPT). A corticosterone (CORT) model of PC12 was set up to explore the antidepressant mechanism of crocin. We pretreated PC12 cells with crocin for 1 hour and then stimulated the cells with CORT for 24 hours. Cell survival was detected by Hoechst staining and MTT assay. The expression of PACAP, cyclic adenosine monophosphate (cAMP) response element binding protein (CREB), and extracellular regulated protein kinases (ERK) were analyzed by western blotting. PACAP RNAi was used to interfere with PC12 cells to downregulate the content of PACAP. The results showed that crocin (30 mg/kg) significantly reversed the decrease of body weight and elevation of serum CORT, mitigated CUMS induced depression-like behaviors of mice, and crocin (12.5 $\mu\text{mol/L}$) protected PC12 cells against CORT (200 $\mu\text{mol/L}$)-induced injury. Furthermore, crocin greatly increased the protein expression of PACAP and phosphorylation of ERK and CREB in the CORT model. PACAP RNAi cancelled the neuroprotective effect of crocin. In conclusion, these results indicated that crocin exerted an antidepressant effect via upregulating PACAP and its downstream ERK and CREB signaling pathways.

1. Introduction

The rapid development of society and economy can produce serious stress and adversity, which may lead to depression. Symptoms of depression include chronic low mood, cognitive impairment, and even suicide [1]. It is now a leading cause of disability and a major contributor to the overall global burden of disease [2]. Conventional antidepressants, typically selective serotonin reuptake inhibitors (SSRIs), have limitations in long lag period, nonresponsive subpopulations, and adverse effects [3]. Therefore, it is urgent to find new strategies for more rapid, effective, and safe antidepressant treatment.

Growing evidences indicate that PACAP, a potent neuropeptide, is involved in neuronal regeneration, synapse formation, and neural plasticity in the central nervous system (CNS) [4, 5]. Clinical studies have shown that a genetic variant of the PACAP gene is associated with depression [6]. PACAP knockout (KO) mice showed prolonged immobility in the forced swim test (FST) [7, 8], which suggests that the PACAP signal pathway may be involved in depression pathogenesis. 180 min maternal deprivation of PACAP heterozygous mice on CD1 background upon CVMS (chronic variable mild stress) may be used as a reliable model for major depression [9]. Furthermore, PACAP activates cyclic adenosine monophosphate (cAMP) response

element binding protein (CREB) and extracellular regulated protein kinases (ERK) [10]. The ERK-CREB pathway plays a crucial role in depression. It can regulate the growth, proliferation, and differentiation of hippocampal neurons [11]. All these suggest that PACAP may be a novel potential target for depression treatment.

Crocin is one of the main active ingredients extracted from gardenia, a traditional Chinese medicine. Clinical studies have shown that crocin is as effective as imipramine in the treatment of mild to moderate depression [12]. Further, crocin significantly increases the expression of p-CREB, brain-derived neurotrophic factor (BDNF), and vascular endothelial growth factor (VEGF) in the rat hippocampus [13]. Our previous research showed that Yueju pills [14] and gardenia [15] have antidepressant effects, with gardenia yellow pigment (GYP, a collection of compounds with shared structure of crocin) being one of the constituents responsible for their antidepressant efficacy [16]. Transcriptional analyses detected a unique upregulation of hippocampal PACAP expression post Yueju (unpublished).

However, it has not been evaluated whether the antidepressant effect of crocin is related to PACAP. In this study, we established a chronic unpredictable mild stress (CUMS) model of mice and corticosterone (CORT) model of PC12 cell to investigate the antidepressant effect of crocin and its related mechanism.

2. Materials and Methods

2.1. Animals. Male Balb/cJ mice (18-24 g, 8-10 weeks of age) were obtained from Jiangning Qinglongshan Animal Cultivation Farm (Nanjing, China, SCXK2017-0001) and housed under standard laboratory conditions. The mice were kept in cages under a 24 h day and night cycle light environment, 50 ± 10% humidity, and a temperature of 24 ± 1°C with free access to water and food. They were acclimatized for 1 week before the CUMS procedures were initiated. All animal work was conducted in the animal center of Nanjing University of Chinese Medicine and carried out in accordance with the principles of the Basel Declaration and recommendations of the International Association of Veterinary Editors guidelines for the care and use of laboratory animals in Nanjing University of Chinese Medicine. The protocol was approved by the Experimental Animal Ethics Committee of Nanjing University of Chinese Medicine (experimental animal ethics batch number: 201906A007).

2.2. Preparation and Identification of β -D-Gentiobiosyl Crocetin. The fruit of *Gardenia jasminoides* Ellis (5 kg) was refluxed with 50% aqueous ethanol (EtOH) for 2 h at 100-110°C three times. After solvent removal, the combined residues were separated on a macroporous resin column (2540 g, 20-40 mesh) with gradient (EtOH/H₂O, 0:100→EtOH/H₂O, 20:80→EtOH/H₂O, 50:50) to yield 3 fractions (Fr.1-Fr.3). Fr.3 (474 g) was further subjected to a Sephadex LH-20 column eluted with EtOH/H₂O (50:50) to afford total crocin. Finally, β -D-Gentiobiosyl Crocetin was obtained by RP-18 silica gel column chromatography (Wanqing Chemi-

cal Glassware & Instrument Co., Ltd., Nanjing, China) using MeCN-H₂O (30:200970) from total crocin.

Identification of β -D-Gentiobiosyl Crocetin is as follows: HR-ESI-MS *m/z*: 675.2620 [M+Na]⁺(calculated for C₃₂H₄₄O₁₄Na [M+Na]⁺, 675.2629). ¹H-NMR (400 MHz, DMSO-*d*₆) δ : 7.36 (1H, H-10), 7.20 (1H, H-10'), 6.84 (1H, H-15'), 6.82 (1H, H-15), 6.78 (1H, H-12), 6.71 (1H, H-11'), 6.65 (1H, H-11), 6.63 (1H, H-12'), 6.51 (1H, H-14), 6.50 (1H, H-14'), 5.42 (2H, H-1'), 1.99 (6H, H-19, 19'), 1.97 (3H, H-20), 1.92 (3H, H-20'). The above data are in agreement with the literature [17].

2.3. Model and Treatment. The CUMS procedure was performed as described earlier [18] with minor modifications. The mice were assigned randomly to four groups (*n* = 10 each): control (sodium chloride 0.9%), CUMS, CUMS plus crocin 30 mg/kg (intragastric administration, ig), and CUMS plus fluoxetine (Flx) 20 mg/kg (intraperitoneal injection, ip). From the third week, crocin and Flx were administered once daily until the CUMS paradigm end (Figure 1(a)). Flx (54910-89-3) was purchased from TCI (Shanghai, China).

2.4. Behavioral Evaluation. All mice underwent depression-like behavioral tests after CUMS. The protocol followed in sequence: open-field test (OFT), tail suspension test (TST), forced swimming test (FST), sucrose preference test (SPT), and novelty-suppressed feeding (NSF). The behavior tests were carried out according to previous literature of our group [18]. After the behavioral experiments were over, mice were sacrificed by decapitation.

2.5. Cells Culture. PC12 cells were seeded in a 96-well plate at a density of 5 × 10⁴ cells per well and incubated for 24 h. The cells were pretreated with gradient concentrations of crocin (12.5, 25, and 50 μ M) for 1 h and then treated with CORT (200 μ M) for 24 h. CORT (#C104537) was provided by Aladdin (Shanghai, China). Cell viability was assessed by 3-(4,5-Dimethylthiazol-2-yl)-2,5-diphenyl tetrazolium bromide (MTT) assay obtained from Biofrox (#298-93-1, Germany). For Hoechst fluorescent staining, the cells were fixed with 4% paraformaldehyde at room temperature for 30 min, followed by staining with Hoechst 33258 solution at 37°C for 10 min. The cells were then washed with phosphate buffer saline (PBS), and images were obtained with a fluorescence microscope. Hoechst 33258 (FXP138-1000) was purchased from Sizhengbai Biotechnology Co., Ltd. (Beijing, China).

2.6. Transfection. PACAP RNA interference (RNAi) was provided by Nanjing KeyGen Biotech. Co., Ltd. (Nanjing, China). After anesthetized, the mice were placed in a stereotaxic apparatus. Lentivirus for PACAP siRNA with a Hamilton syringe was injected into the prefrontal cortex. At least 7 days of recovery were required before sample collection. PC12 cells were transfected with PACAP RNAi or negative control RNAi for 5 h via lentivirus with the Opti-MEM Reduced Serum Medium. The medium was then replaced with the regular culture medium containing serum, and the cells were cultured for 48 h. Next, the cells were exposed to CORT (200 μ M) with or without crocin (25 μ M). Finally,

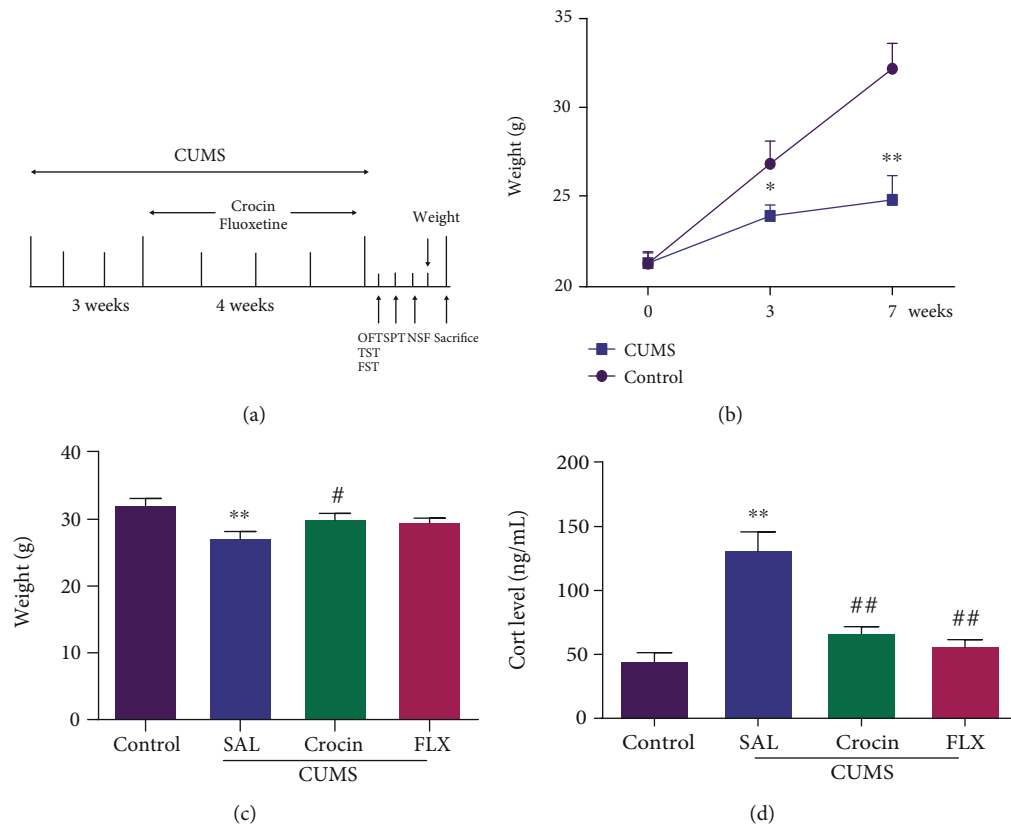


FIGURE 1: Crocin reversed the decreases of body weight and elevation of serum CORT. (a) Schematic diagram of the experimental process of chronic unpredictable mild stress (CUMS) program and treatments. (b) Weight change in 0-7 weeks' model process. From the first week to 7th week: two-way ANOVA, $F(2, 57) = 5.819, P = 0.005$; $F(2, 57) = 22.24, P < 0.0001$; $F(1, 57) = 16.58, P = 0.0001$. All data are expressed as mean \pm SEM. * $P < 0.05$, ** $P < 0.01$ compared with the control group. (c, d) The weight and levels of CORT change. ANOVA, $F(3, 28) = 6.010, P = 0.0027$; $F(3, 28) = 20.67, P < 0.0001$. All data are expressed as mean \pm SEM. * $P < 0.05$, ** $P < 0.01$ versus saline; # $P < 0.05$, ## $P < 0.01$ versus CUMS.

we used western blotting analysis to evaluate the efficiency of PACAP RNAi (Figure 2).

2.7. Western Blotting. The PC12 cells were homogenized and lysed in ice-cold radio immunoprecipitation assay (RIPA) solution. Antibodies were obtained from commercial sources: p-ERK (4376) [19], ERK (9102), CREB (9197), and p-CREB (9198) [20] were from Cell Signaling Technology (CST, USA); PACAP (0190R) was from Beijing Biosynthesis Biotechnology Co., Ltd. (Beijing, China), and PACAP (sc-166180) was from Santa Cruz [21–23]; Tubulin (10094-1-AP) [24] was from Proteintech (Chicago, USA).

2.8. Statistical Analysis. All data were expressed as mean \pm SEM, and differences between groups were analyzed using one-way ANOVA and *T*-test. $P < 0.05$ was considered statistically significant. All data in the figures were obtained using GraphPad Prism 5 statistical software.

3. Results

3.1. Crocin Reversed the Decreases of Body Weight and Elevation of Serum CORT. As shown in Figures 1(b) and 1(c), the body weights of the mice in each group had no differences at the beginning. Over the 3-week and 7-week modeling,

CUMS reduced the body weight gain of mice ($P < 0.01, P < 0.01$), crocin significantly increased the body weight after 7 weeks compared with CUMS group ($P < 0.01$), but Flx did not.

Hypothalamic-pituitary-adrenal (HPA) axis is a major neuroendocrine system closely associated with stress induced depression; the activity of which was quantified with the determination of the serum level of CORT. The level of CORT was higher in the CUMS groups than that in the saline group ($P < 0.01$), but crocin and Flx reversed the elevation of serum CORT ($P < 0.01, P < 0.01$) (Figure 1(d)). These results indicated that crocin reversed the growth of body weight and attenuated CUMS-induced hyperactivity of HPA axis.

3.2. Crocin Reversed CUMS-Induced Depression-Related Behavior. With the SPT, reflecting anhedonia, the sucrose consumption rate in the CUMS group was obviously lower than that in the saline group ($P < 0.01$). After crocin treatment, the decrease of the percentage of sucrose preference was reversed ($P < 0.01$) (Figure 3(a)). The TST and the FST results reflected the behavioral despair of the mice. We found that the immobility time of the CUMS group was extended remarkably compared with the saline group ($P < 0.01, P < 0.01$), while crocin shortened the immobility time ($P < 0.01, P < 0.01$) (Figures 3(b) and 3(c)). The NSF test showed that

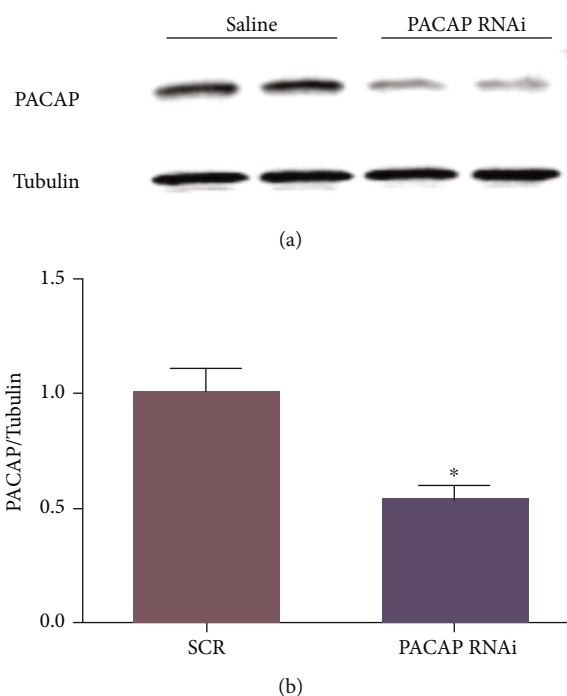


FIGURE 2: Western blotting analysis of the expression of PACAP. Representative diagram for the sites of the prefrontal cortex transfection of PACAP RNAi or scramble control sequence (SCR). *T*-test, * $P < 0.05$ versus SCR group, $n = 3$.

CUMS had reduced food consumption (Figure 3(d)) and increased feeding latency significantly ($P < 0.01$, $P < 0.01$) (Figure 3(e)), while crocin treatment reversed these phenomena ($P < 0.01$, $P < 0.01$). These effects of crocin were similar to those of the classic antidepressant fluoxetine. The OFT evaluates locomotor activity, which was not affected by CUMS stimulation or crocin and fluoxetine administration (Figures 3(f) and 3(g)).

3.3. Crocin Relieved Corticosterone-Induced PC12 Injury. To validate the antidepressant effects of crocin, we established a corticosterone model in PC12 cells. The cells were administered with gradient concentrations of crocin (12.5, 25, and 50 μM) for 1 h, then CORT (200 μM) for 24 h. Data from Hoechst 33258 staining are shown in Figure 4(a). The PC12 cells in the control group had large nuclei, complete and regular morphology, and uniform fluorescence distribution. However, after CORT (200 μM) treatment, the number of nuclei was significantly reduced, with irregular morphology, condensed chromatin, uneven fluorescence distribution, and nuclear fragmentation. These were typical characteristics of apoptosis. MTT results showed that the cellular viability of PC12 cells was 61.4% in the CORT group ($P < 0.01$), while increased to 95.2%, 102.2%, and 106.2% ($P < 0.01$, $P < 0.01$, and $P < 0.01$) after crocin treatment (12.5, 25, and 50 μM) (Figure 4(b)); hence, we chose 12.5 μM crocin for the later experiment. These results indicated that crocin has a neuroprotective effect against CORT-induced damage.

3.4. Crocin Increased PACAP Expression and Phosphorylation of CREB and ERK in the Corticosterone Cell Model. To

explore the antidepressant mechanism of crocin, we analyzed the expression of PACAP and associated signaling pathways. Compared with the control group, the expression of PACAP was significantly decreased in the CORT group ($P < 0.01$) but reversed by crocin ($P < 0.01$). Furthermore, CORT inhibited the phosphorylation of CREB and ERK ($P < 0.01$, $P < 0.05$), but this effect was suppressed by crocin ($P < 0.01$, $P < 0.05$) (Figures 4(c)–4(f)).

3.5. PACAP Was Involved in the Neuroprotective Effects of the Crocin In Vitro Model of Depression. To confirm whether PACAP was responsible for the antidepressant effect of crocin, we downregulated PACAP expression using RNAi based on the PC12 cells. 293 T cells and PC12 cells were transfected with control RNAi and PACAP RNAi for 5 h. After resting 48 h, we observed that most of the cells emitted fluorescence with PACAP RNAi but not control RNAi, indicating successful transfection (Figure 5(a)). Compared with the control group, PACAP RNAi transfection was shown to significantly reduce PACAP expression to 54.2% ($P < 0.01$) (Figures 5(b) and 5(c)). Finally, we used PACAP RNAi to transfect PC12 cells and treated the cells with crocin and CORT. Hoechst staining and MTT assay results revealed that CORT reduced the viability of PC12 cells compared with the control group obviously ($P < 0.01$) (Figures 5(d)–5(f)), which was reversed by crocin ($P < 0.01$). However, PACAP RNAi reduced PC12 cell viability noticeably. Therefore, transfection of PACAP RNAi significantly abolished the neuroprotective effects of crocin in the CORT cell model. Thus, it could be extrapolated that PACAP may be involved in the antidepressant effect of crocin.

4. Discussion

Major depression is a common illness that severely limits psychosocial functioning and diminishes quality of life. Studies have shown that depression is expected to be the second most common disease after cardiovascular disease [25]. However, our knowledge of the pathophysiology of depression is incomplete, which prevents us from developing more effective treatments so far. Recent studies have reported that traditional Chinese medicine (TCM) has significant clinical effects in the prevention and treatment of depression [26]. In the present study, we purified crocin from the fruit of *Gardenia jasminoides* Ellis and study the antidepressant effect and mechanism of crocin. We found that crocin reversed the decrease of body weight and elevation of serum CORT. Further, crocin increased food consumption and decreased the feeding latency, increased the sucrose consumption rate, and reduced the immobility time in TST and FST assessments of CUMS model mice. These indicated that crocin could moderate the observed depression-like behavior the same as fluoxetine in the CUMS model. In addition, crocin reduced apoptosis in the CORT model in PC12 cells, as demonstrated by Hoechst staining and MTT assay. Meanwhile, crocin increased the expression of PACAP and phosphorylation of CREB and ERK. Transfection of PACAP RNAi significantly abolished the protective effects of crocin in the CORT

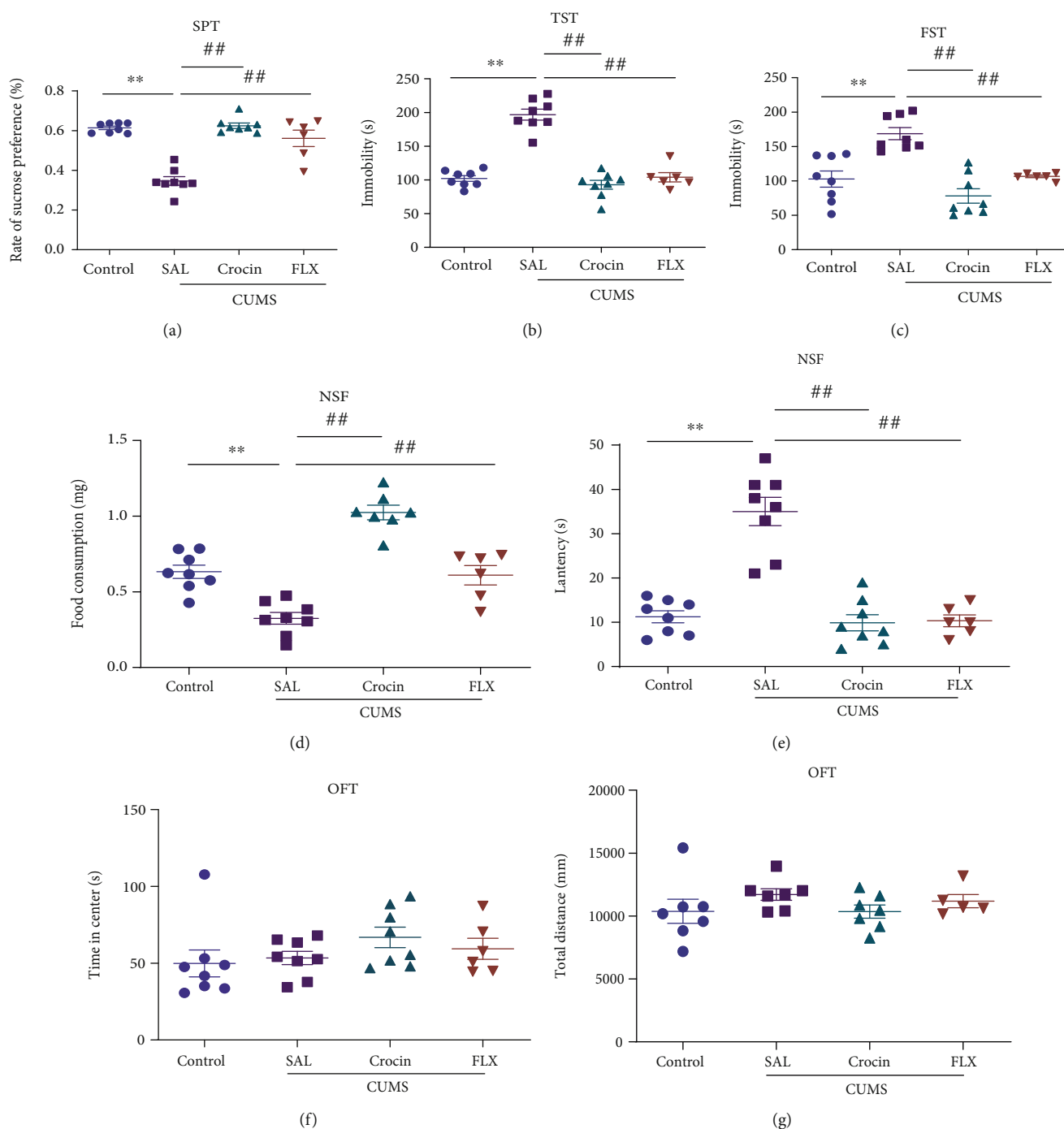


FIGURE 3: Crocin recovered CUMS-induced depression-related behavior. (a) The sucrose preference test. ANOVA, $F(3, 26) = 38.07, P < 0.0001$. (b, c) The immobility time in TST and FST. ANOVA, $F(3, 26) = 56.74, P < 0.0001$; ANOVA, $F(3, 26) = 16.72, P < 0.0001$. (d, e) The food consumption and feeding latency in NSF. ANOVA, $F(3, 25) = 37.15, P < 0.0001$; ANOVA, $F(3, 26) = 33.55, P < 0.0001$. (f, g) The total distance and time in center in OFT. ANOVA, $F(3, 22) = 1.019, P = 0.4031$; ANOVA, $F(3, 26) = 1.238, P = 0.3162$. All data are expressed as mean \pm SEM. * $P < 0.05$, ** $P < 0.01$ versus saline; # $P < 0.05$, ## $P < 0.01$ versus CUMS.

cell model. These suggested that PACAP was involved in the neuroprotective effects of crocin.

As a consequence of CUMS, reduction of body weight gain and elevation of serum CORT were observed, indicating alterations in adrenal cortex function. In addition, the weight of adrenal and thymus demonstrated an inhibition of the immune system after long-term stress [27]. Our

results indicated that crocin markedly ameliorated the function of the HPA axis and potentially affected the adrenal and thymus glands. Previous studies have confirmed that crocin decreased dietary intake and reduced the appetite of patients with coronary artery disease [28] and the obese Wistar rat [29], which has antiobesity and anorectic effects. These studies did not describe the effects of crocin on

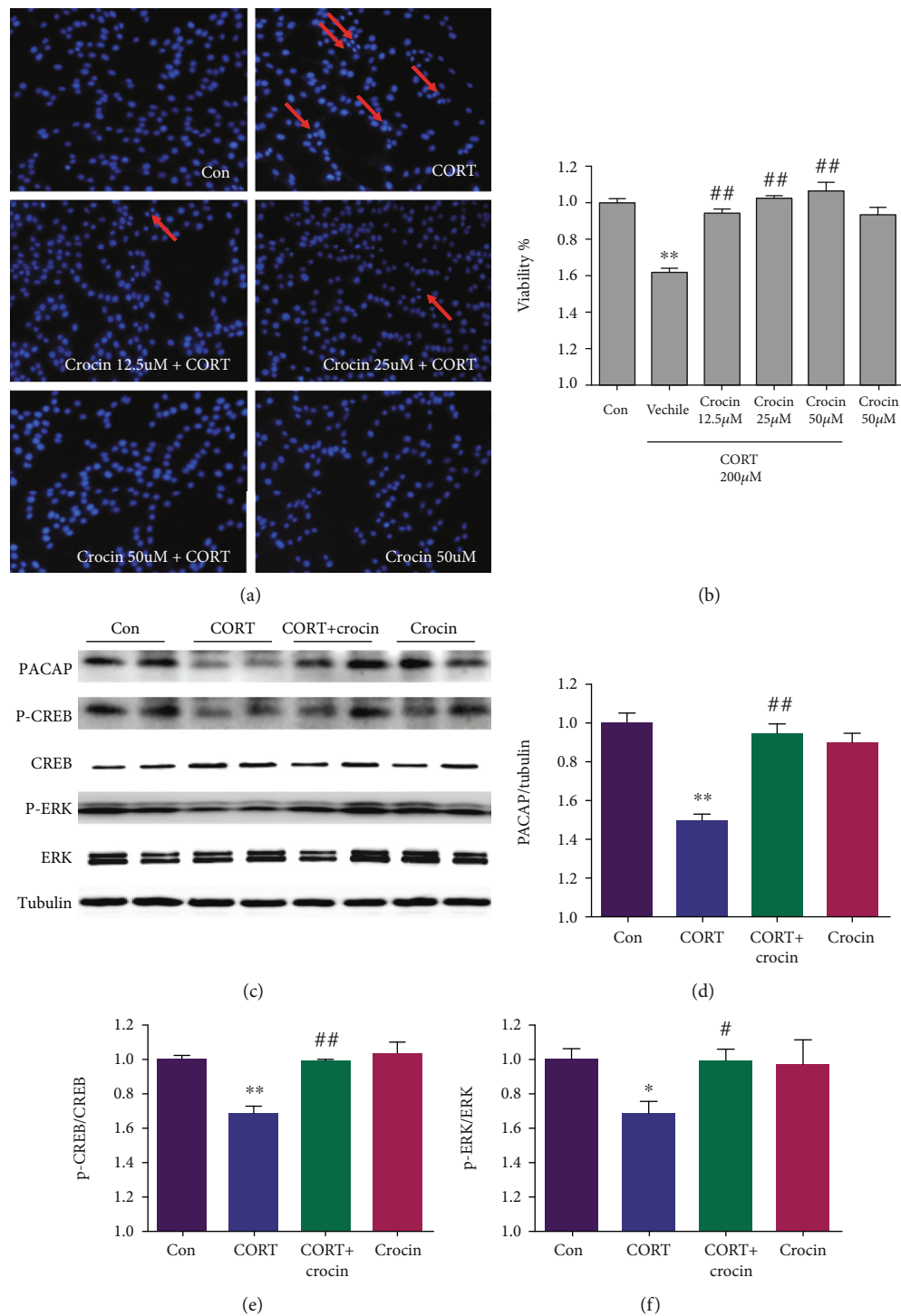


FIGURE 4: Crocin relieved corticosterone induced PC12 injury by regulating PACAP-mediated ERK and CREB signaling pathways. (a) Hoechst 33258 staining and observation of PC12 cells with fluorescence microscope. (b) Effect of crocin in cell viability using MTT assay. ANOVA, $F(5, 30) = 24.97$, $P < 0.0001$. (c-f) PACAP, ERK, and CREB were analyzed by immunoblotting. ANOVA, $F(3, 8) = 23.77$, $P = 0.0002$; ANOVA, $F(3, 10) = 3.265$, $P = 0.0676$; ANOVA, $F(3, 10) = 15.86$, $P = 0.0004$. Data are expressed as mean \pm SEM ($n = 3$). * $P < 0.05$ and ** $P < 0.01$ versus the control group; # $P < 0.05$ and ## $P < 0.01$ versus CORT group.

normal people or normal animals. Actually, we found that crocin alone did not affect the behavior of mice in NSF and SPT in our previous study. However, in the specific CUMS model, crocin increased the intake of food and sucrose and improved the appetite of mice with depression.

The ERK-CREB pathway plays a key role in the treatment of depression [30, 31]. It can be activated by many antidepressant drugs, including paeoniflorin [32] and memantine [33]. Gardenia yellow pigment (GYP) is a class of compounds with a crocin structure. GYP could activate ERK,

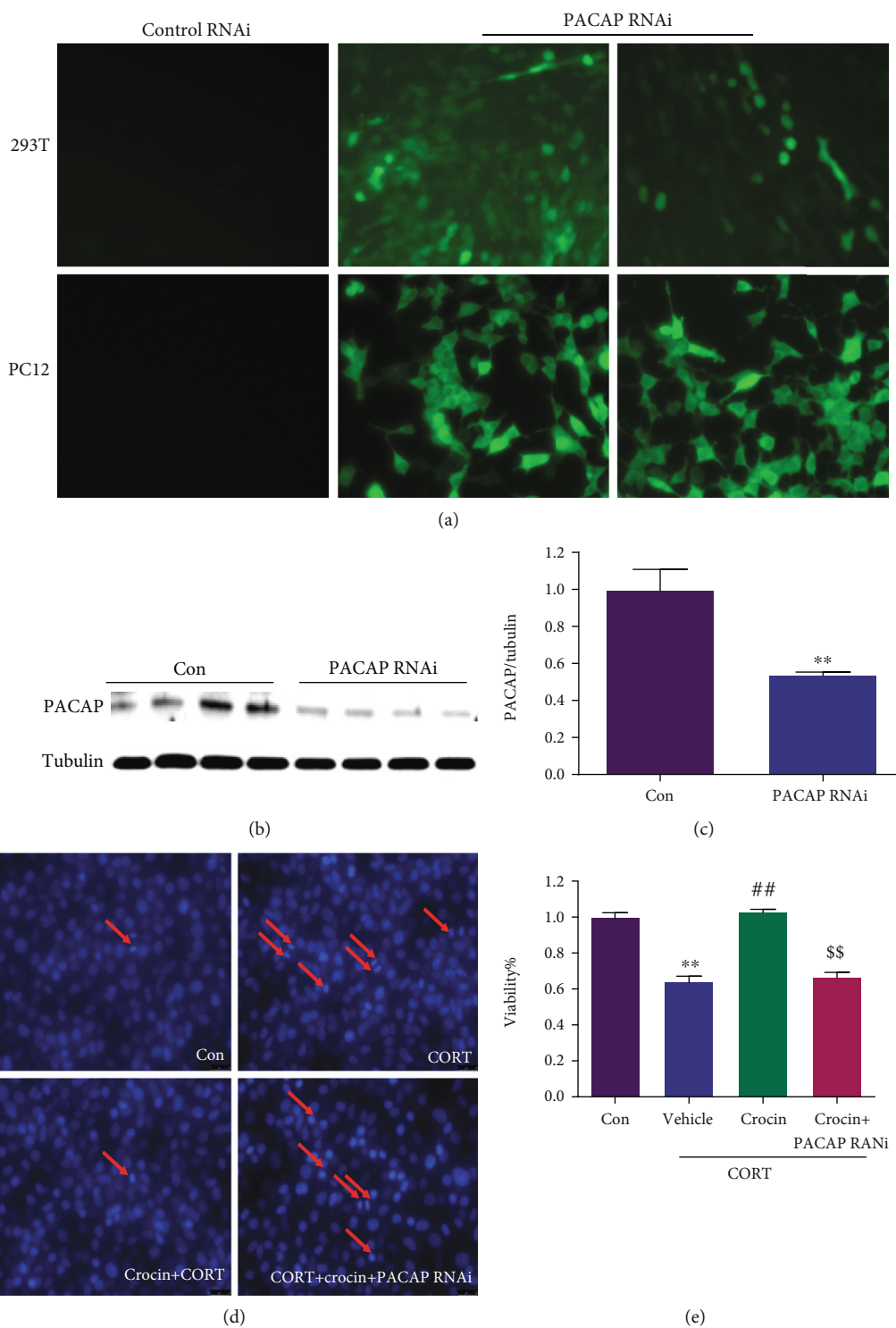


FIGURE 5: PACAP was involved in the neuroprotective effects of crocin in the CORT model of PC12 cells. (a) Knockdown of PACAP with PACAP siRNA. The cells were observed under the fluorescence microscope. (b-c) Western blotting analysis of the expression of PACAP after transfection with PACAP siRNA. *T*-test, $n = 5$, $P < 0.01$. (d) Hoechst33258 staining and observation of PC12 cells with fluorescence microscope after transfection with PACAP siRNA and crocin. (e) Effects of crocin in cell viability of PC12 cell after transfection with PACAP siRNA. ANOVA, $F(3, 24) = 75.75$, $P < 0.0001$. * $P < 0.05$ and ** $P < 0.01$ versus control group; # $P < 0.05$ and ## $P < 0.01$ versus CORT group, § $P < 0.05$ and §§ $P < 0.01$ versus CORT+crocin group.

CREB and their downstream effectors, which were thought to be response to neuronal survival and neuroplasticity, thereby exerting rapid antidepressant effects in learned helplessness

paradigm [16]. In our experiment, crocin significantly increased ERK and CREB phosphorylation, while the expression of total ERK and CREB proteins did not change. This

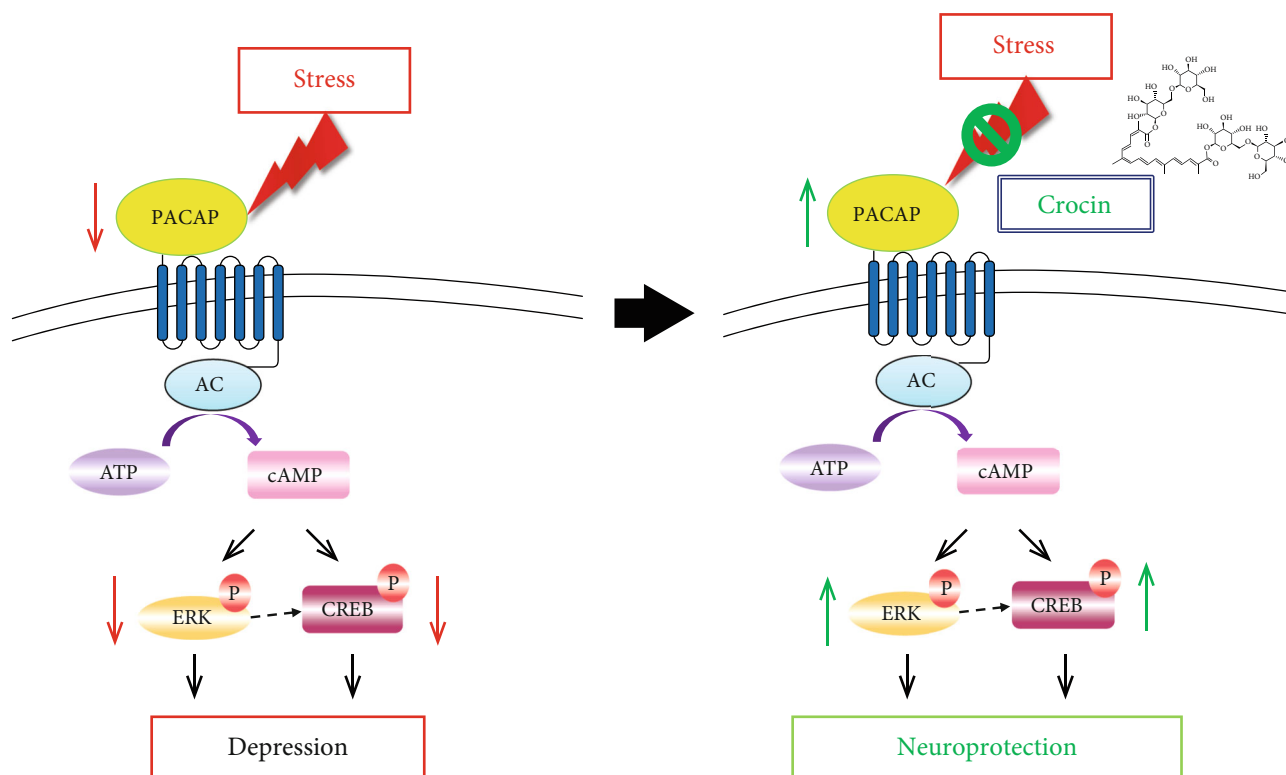


FIGURE 6: A schematic illustration of the proposed mechanism for the neuroprotective effect of crocin in depression. Stress inhibits the expression of PACAP, thereby inhibiting the phosphorylation of its downstream ERK and CREB, and then reduces the translation of synaptic plasticity proteins, finally leading to depressed-like behaviors. Crocin can activate ERK and CREB signaling pathways via upregulating endogenous PACAP, then enhance synaptic plasticity and improve neuron survival, and play an antidepressant role in mice CUMS model and corticosterone cell model.

suggested that the antidepressant effect of crocin was through increased phosphorylation of ERK and CREB. PACAP, a potent neuropeptide, binds to G-protein coupled receptor (GPCR) isoforms and activates downstream signaling pathways including the protein kinase A- (PKA-) CREB pathway [10, 30]. Over the past ten years, increasing evidences supported that PACAP might play a modulatory role in stress-related mood disorders and stress adaptation [34, 35]. Human genetic variants of PACAP or its receptor were found to be associated with depression and posttraumatic stress disorder (PTSD), particularly in females [36]. However, there were also studies suggesting that PACAP administration had anxiogenic and depressive effects [37], and PACAP deficiency seemed to be protective against social defeat [38]. It has been shown that different phenotypes of PACAP KO mice depend on genetic background. PACAP KO mice (F1: C57BL/6J × 129SvEv) exhibited increased locomotor activity in a novel environment and abnormal anxiety-like behavior but showed slightly decreased depression-like behavior [39]. CORT elevation and weight loss following 7-day chronic restraint stress are severely blunted in PACAP-deficient mice (C57BL/6N) [40]. PACAP-deficient mice on CD1 background were shown to have depression-like phenotype [41]. Our research applied RNA interference to confirm that PACAP elevation had an antidepressant effect by activating the ERK-CREB signaling pathway. Furthermore, crocin

upregulated endogenous PACAP to activate ERK and CREB and improved depressor-like behaviors in CUMS mice.

The present study supports the hypothesis that stress inhibits the expression of PACAP, thereby inhibiting the phosphorylation of its downstream ERK and CREB, and then reduces the translation of synaptic plasticity proteins, finally leading to depressed-like behaviors. Crocin can activate ERK and CREB signaling pathways via upregulating endogenous PACAP, then enhance synaptic plasticity and improve neuron survival, and play an antidepressant role in the mice CUMS model and the corticosterone cell model (Figure 6). It is thus conceivable that PACAP will be an important target for antidepressant treatment. In addition, we believe that TCM has its unique advantages in treating depression. However, TCM has multiple targets and approaches, and the research on TCM treatment of depression should be further standardized to better guide clinical practice.

Data Availability

The data used to support the findings of this study are available from the corresponding author upon request.

Conflicts of Interest

The authors declare that they have no conflicts of interest.

Authors' Contributions

Special thanks to all authors who contributed to this research: data curation, Linyu Lu; funding acquisition, Juanjuan Tang; methodology, Kai Wang; project administration, Juanjuan Tang; software, Die Wu; writing-original draft, Juanjuan Tang; and writing-review and editing, Gang Chen.

Acknowledgments

This work was supported by the National Natural Science Foundation of China (no. 81603089) and the Natural Science Foundation of Jiangsu Province (BK20161044).

References

- [1] F. P. Moreira, K. Jansen, T. A. Cardoso et al., "Metabolic syndrome, depression and anhedonia among young adults," *Psychiatry Research*, vol. 271, pp. 306–310, 2019.
- [2] G. S. Malhi and J. J. Mann, "Depression," *The Lancet*, vol. 392, no. 10161, pp. 2299–2312, 2018.
- [3] F. Hieronymus, A. Lisinski, S. Nilsson, and E. Eriksson, "Influence of baseline severity on the effects of SSRIs in depression: an item- based, patient-level post-hoc analysis," *The Lancet Psychiatry*, vol. 6, no. 9, pp. 745–752, 2019.
- [4] S. E. Hammack and V. May, "Pituitary adenylate cyclase activating polypeptide in stress-related disorders: data convergence from animal and human studies," *Biological Psychiatry*, vol. 78, no. 3, pp. 167–177, 2015.
- [5] A. J. Cooper, S. Narasimhan, K. Rickels, and F. W. Lohoff, "Genetic polymorphisms in the PACAP and PAC1 receptor genes and treatment response to venlafaxine XR in generalized anxiety disorder," *Psychiatry Research*, vol. 210, no. 3, pp. 1299–1300, 2013.
- [6] R. Hashimoto, H. Hashimoto, N. Shintani et al., "Possible association between the pituitary adenylate cyclase-activating polypeptide (PACAP) gene and major depressive disorder," *Neuroscience Letters*, vol. 468, no. 3, pp. 300–302, 2010.
- [7] H. Hashimoto, R. Hashimoto, N. Shintani et al., "Depression-like behavior in the forced swimming test in PACAP-deficient mice: amelioration by the atypical antipsychotic risperidone," *Journal of Neurochemistry*, vol. 110, no. 2, pp. 595–602, 2009.
- [8] B. Gaszner, V. Kormos, T. Kozicz, H. Hashimoto, D. Reglodi, and Z. Helyes, "The behavioral phenotype of pituitary adenylate-cyclase activating polypeptide-deficient mice in anxiety and depression tests is accompanied by blunted c-Fos expression in the bed nucleus of the stria terminalis, central projecting Edinger-Westphal nucleus, ventral lateral septum, and dorsal raphe nucleus," *Neuroscience*, vol. 202, pp. 283–299, 2012.
- [9] J. Farkas, L. A. Kovacs, L. Gaspar et al., "Construct and face validity of a new model for the three-hit theory of depression using PACAP mutant mice on CD1 background," *Neuroscience*, vol. 354, pp. 11–29, 2017.
- [10] C. Liao, M. P. de Mollins, S. T. Schneebeli et al., "Targeting the PAC1 receptor for neurological and metabolic disorders," *Current Topics in Medicinal Chemistry*, vol. 19, no. 16, pp. 1399–1417, 2019.
- [11] S. L. Gourley, F. J. Wu, D. D. Kiraly et al., "Regionally Specific Regulation of ERK MAP Kinase in a Model of Antidepressant-Sensitive Chronic Depression," *Biological Psychiatry*, vol. 63, no. 4, pp. 353–359, 2008.
- [12] L. Zhang, R. Previn, L. Lu, R. F. Liao, Y. Jin, and R. K. Wang, "Crocin, a natural product attenuates lipopolysaccharide-induced anxiety and depressive-like behaviors through suppressing NF- κ B and NLRP3 signaling pathway," *Brain Research Bulletin*, vol. 142, pp. 352–359, 2018.
- [13] M. Shafahi, G. Vaezi, H. Shajee, S. Sharafi, and M. Khaksari, "Crocin inhibits apoptosis and astrogliosis of hippocampus neurons against methamphetamine neurotoxicity via antioxidant and anti-inflammatory mechanisms," *Neurochemical Research*, vol. 43, no. 12, pp. 2252–2259, 2018.
- [14] Z. Zou, Y. Chen, Q. Shen, X. Guo, Y. Zhang, and G. Chen, "Neural plasticity associated with hippocampal PKA-CREB and NMDA signaling is involved in the antidepressant effect of repeated low dose of Yueju pill on chronic mouse model of learned helplessness," *Neural Plasticity*, vol. 2017, Article ID 9160515, 11 pages, 2017.
- [15] K. D. Li, K. Yan, Q. S. Wang et al., "Antidepressant-like effects of dietary gardenia blue pigment derived from genipin and tyrosine," *Food & Function*, vol. 10, no. 8, pp. 4533–4545, 2019.
- [16] R. Wu, W. Tao, H. Zhang et al., "Instant and persistent antidepressant response of gardenia yellow pigment is associated with acute protein synthesis and delayed upregulation of BDNF expression in the hippocampus," *ACS Chemical Neuroscience*, vol. 7, no. 8, pp. 1068–1076, 2016.
- [17] S. Pfister, P. Meyer, A. Steck, and H. Pfander, "Isolation and structure elucidation of carotenoid-glycosyl esters in gardenia fruits (*Gardenia jasminoides* Ellis) and saffron (*Crocus sativus* Linne)," *Journal of Agricultural and Food Chemistry*, vol. 44, no. 9, pp. 2612–2615, 1996.
- [18] J. Tang, W. Xue, B. Xia et al., "Involvement of normalized NMDA receptor and mTOR-related signaling in rapid antidepressant effects of Yueju and ketamine on chronically stressed mice," *Scientific Reports*, vol. 5, no. 1, article 13573, 2015.
- [19] J. Tolo, G. Taschenberger, K. Leite et al., "Pathophysiological consequences of neuronal α -Synuclein overexpression: impacts on ion homeostasis, stress signaling, mitochondrial integrity, and electrical activity," *Frontiers in Molecular Neuroscience*, vol. 11, p. 49, 2018.
- [20] H. J. Lim, J. H. Park, C. Jo, K. Yoon, and Y. H. Koh, "Cigarette smoke extracts and cadmium induce COX-2 expression through γ -secretase-mediated p38 MAPK activation in C6 astroglia cells," *PLoS One*, vol. 14, no. 2, article e0212749, 2019.
- [21] K. J. Perry, P. W. Hamilton, S. Sonam, R. Singh, and J. J. Henry, "The role of sensory innervation in cornea-lens regeneration," *Developmental Dynamics*, vol. 248, no. 7, pp. 530–544, 2019.
- [22] A. Matynia, E. Nguyen, X. Sun et al., "Peripheral sensory neurons expressing melanopsin respond to light," *Front Neural Circuits*, vol. 10, p. 60, 2016.
- [23] T. A. Wang, C. F. Teo, M. Akerblom et al., "Thermoregulation via temperature-dependent PGD2 production in mouse preoptic area," *Neuron*, vol. 103, no. 2, pp. 309–322.e7, 2019.
- [24] M. F. Xu, H. Zhou, C. Y. Hu, Y. Q. Liang, L. Hu, and D. Chen, "The mechanisms of EGFR in the regulation of axon regeneration," *Cell Biochemistry and Function*, vol. 32, no. 1, pp. 101–105, 2014.

- [25] D. J. Kupfer, E. Frank, and M. L. Phillips, "Major depressive disorder: new clinical, neurobiological, and treatment perspectives," *The Lancet*, vol. 379, no. 9820, pp. 1045–1055, 2012.
- [26] G. Chen and X. Guo, "Neurobiology of Chinese herbal medicine on major depressive disorder," *International Review of Neurobiology*, vol. 135, pp. 77–95, 2017.
- [27] X. Wang, C. Zeng, J. Lin et al., "Metabonomics approach to assessing the modulatory effects of St John's wort, ginsenosides, and clomipramine in experimental depression," *Journal of Proteome Research*, vol. 11, no. 12, pp. 6223–6230, 2012.
- [28] N. Abedimanesh, S. Z. Bathaie, S. Abedimanesh, B. Motlagh, A. Separham, and A. Ostadrahimi, "Saffron and crocin improved appetite, dietary intakes and body composition in patients with coronary artery disease," *Journal of Cardiovascular and Thoracic Research*, vol. 9, no. 4, pp. 200–208, 2017.
- [29] S. Kianbakht and F. H. Dabaghian, "Anti-obesity and anorectic effects of saffron and its constituent crocin in obese Wistar rat," *Journal of Medicinal Plants*, vol. 14, no. 53, pp. 25–33, 2015.
- [30] A. C. Emery and L. E. Eiden, "Signaling through the neuropeptide GPCR PAC₁ induces neuritogenesis via a single linear cAMP- and ERK-dependent pathway using a novel cAMP sensor," *The FASEB Journal*, vol. 26, no. 8, pp. 3199–3211, 2012.
- [31] S. Tsuchimine, N. Sugawara, and N. Yasui-Furukori, "Increased levels of CREB in major depressive patients with antidepressant treatment," *Psychiatry Research*, vol. 263, pp. 296–297, 2018.
- [32] X. Zhong, G. Li, F. Qiu, and Z. Huang, "Paeoniflorin ameliorates chronic stress-induced depression-like behaviors and neuronal damages in rats via activation of the ERK-CREB pathway," *Frontiers in Psychiatry*, vol. 9, p. 772, 2018.
- [33] K. Takahashi, O. Nakagawasai, W. Nemoto et al., "Memantine ameliorates depressive-like behaviors by regulating hippocampal cell proliferation and neuroprotection in olfactory bulbectomized mice," *Neuropharmacology*, vol. 137, pp. 141–155, 2018.
- [34] M. P. Seiglie, K. L. Smith, A. Blasio, P. Cottone, and V. Sabino, "Pituitary adenylate cyclase-activating polypeptide induces a depressive-like phenotype in rats," *Psychopharmacology*, vol. 232, no. 20, pp. 3821–3831, 2015.
- [35] A. Pinhasov, E. Neshar, M. Gross, G. Turgeman, A. Kreinin, and G. Yadid, "The role of the PACAP signaling system in depression," *Current Pharmaceutical Design*, vol. 17, no. 10, pp. 990–1001, 2011.
- [36] L. M. Almlı, K. B. Mercer, K. Kerley et al., "ADCYAP1R1 genotype associates with post-traumatic stress symptoms in highly traumatized African-American females," *American Journal of Medical Genetics. Part B, Neuropsychiatric Genetics*, vol. 162B, pp. 262–272, 2013.
- [37] R. Dore, A. Iemolo, K. L. Smith, X. Wang, P. Cottone, and V. Sabino, "CRF mediates the anxiogenic and anti-rewarding, but not the anorectic effects of PACAP," *Neuropsychopharmacology*, vol. 38, no. 11, pp. 2160–2169, 2013.
- [38] M. L. Lehmann, T. Mustafa, A. M. Eiden, M. Herkenham, and L. E. Eiden, "PACAP-deficient mice show attenuated corticosterone secretion and fail to develop depressive behavior during chronic social defeat stress," *Psychoneuroendocrinology*, vol. 38, no. 5, pp. 702–715, 2013.
- [39] S. Hattori, K. Takao, K. Tanda et al., "Comprehensive behavioral analysis of pituitary adenylate cyclase-activating polypeptide (PACAP) knockout mice," *Frontiers in Behavioral Neuroscience*, vol. 6, p. 58, 2012.
- [40] T. Mustafa, S. Z. Jiang, A. M. Eiden, E. Weihe, I. Thistlethwaite, and L. E. Eiden, "Impact of PACAP and PAC1 receptor deficiency on the neurochemical and behavioral effects of acute and chronic restraint stress in male C57BL/6 mice," *Stress*, vol. 18, no. 4, pp. 408–418, 2015.
- [41] V. Kormos, L. Gaspar, L. A. Kovacs et al., "Reduced response to chronic mild stress in PACAP mutant mice is associated with blunted FosB expression in limbic forebrain and brainstem centers," *Neuroscience*, vol. 330, pp. 335–358, 2016.