

Endoscopic ultrasound-guided injective ablative treatment of pancreatic cystic neoplasms

Chen Du, Ning-Li Chai, En-Qiang Linghu, Hui-Kai Li, Xiu-Xue Feng

ORCID number: Chen Du (0000-0002-0176-8105); Ning-Li Chai (0000-0002-6791-5817); En-Qiang Linghu (0000-0003-4028-1508); Hui-Kai Li (0000-0002-0276-4587); Xiu-Xue Feng (0000-0003-0226-263X).

Author contributions: Du C and Chai NL contributed equally to this article; Du C and Chai NL contributed to this paper with conception and design of the study; Du C, Chai NL, Li HK, and Feng XX did the literature review and analysis; Du C and Linghu EQ wrote the paper; all authors made the critical revision and editing of the article for important intellectual content, and approved the final version.

Conflict-of-interest statement:

There is no conflict of interest associated with any of the senior author or other coauthors contributed their efforts in this manuscript.

Open-Access: This article is an open-access article that was selected by an in-house editor and fully peer-reviewed by external reviewers. It is distributed in accordance with the Creative Commons Attribution NonCommercial (CC BY-NC 4.0) license, which permits others to distribute, remix, adapt, build upon this work non-commercially, and license their derivative works on different terms, provided the original work is properly cited and the use is non-commercial. See: <http://creativecommons.org/licenses/by-nc/4.0/>

Manuscript source: Invited manuscript

Chen Du, Ning-Li Chai, En-Qiang Linghu, Hui-Kai Li, Xiu-Xue Feng, Department of Gastroenterology and Hepatology, Chinese PLA General Hospital, Beijing 100853, China

Corresponding author: En-Qiang Linghu, MD, PhD, Chief Doctor, Chief Physician, Director, Professor, Department of Gastroenterology and Hepatology, Chinese PLA General Hospital, 28 Fuxing Road, Haidian District, Beijing 100853, China. linghuenqiang@vip.sina.com

Abstract

With the development of cross-sectional imaging modalities and the increasing attention being paid to physical examinations, the prevalence of pancreatic cystic neoplasms (PCNs) has increased. PCNs comprise a broad differential spectrum with some PCNs having low or no malignant potential and others having high malignant potential. The morbidity and mortality rates related to major pancreatic surgical resection are high. Long-term surveillance may not only increase the financial burden and psychological stress for patients but also result in a missed malignancy. Minimally invasive endoscopic ultrasound (EUS)-guided ethanol ablation was first reported in 2005. Several other agents, such as paclitaxel, lauromacrogol, and gemcitabine, were reported to be effective and safe for the treatment of PCNs. These ablative agents are injected through a needle inserted into the cyst *via* transgastric or transduodenal puncture. This treatment method has been substantially developed in the last 15 years and is regarded as a promising treatment to replace surgical resection for PCNs. While several reviews of EUS-guided ablation have been published, no systematic review has evaluated this method from patient preparation to follow-up in detail. In the present review, we systematically describe EUS-guided injective ablation with regard to the indications, contraindications, preoperative treatment, endoscopic procedure, postoperative care and follow-up, evaluation method, treatment efficiency, safety profile, tips and tricks, and current controversies and perspectives.

Key words: Endoscopic ultrasound-guided ablation; Pancreatic cystic neoplasm; Ethanol; Paclitaxel; Lauromacrogol; Gemcitabine

©The Author(s) 2020. Published by Baishideng Publishing Group Inc. All rights reserved.

Core tip: Endoscopic ultrasound (EUS)-guided ethanol ablation was initially reported as a minimally invasive procedure to treat pancreatic cystic neoplasms (PCNs) in 2005. Several other agents, such as paclitaxel, lauromacrogol, and gemcitabine, were reported to be effective and safe for the treatment of PCNs. This treatment method has undergone

Received: January 13, 2020**Peer-review started:** January 13, 2020**First decision:** April 8, 2020**Revised:** April 24, 2020**Accepted:** May 22, 2020**Article in press:** May 22, 2020**Published online:** June 21, 2020**P-Reviewer:** Chisthi MM, Crinò SF, de Moura DTH, Efthymiou A, Nakai Y**S-Editor:** Dou Y**L-Editor:** Wang TQ**E-Editor:** Ma YJ

much development over 15 years and is regarded as a promising treatment to replace surgical resection for PCNs. In the present review, we systematically describe the indications, contraindications, preoperative treatment, endoscopic procedure, postoperative care and follow-up, evaluation method, treatment efficiency, safety profile, tips and tricks, and current controversies and perspectives of EUS-guided injective ablation.

Citation: Du C, Chai NL, Linghu EQ, Li HK, Feng XX. Endoscopic ultrasound-guided injective ablative treatment of pancreatic cystic neoplasms. *World J Gastroenterol* 2020; 26(23): 3213-3224

URL: <https://www.wjgnet.com/1007-9327/full/v26/i23/3213.htm>

DOI: <https://dx.doi.org/10.3748/wjg.v26.i23.3213>

INTRODUCTION

Pancreatic cystic neoplasms (PCNs) used to be ignored because most are asymptomatic^[1]. With the development of cross-sectional imaging modalities and the increasing attention being paid to physical examinations, the prevalence of PCNs is estimated to be nearly 20%^[2-6]. However, PCNs comprise a broad differential spectrum of tumors that are difficult to distinguish because of their varied biological behaviors^[7,8]. In general, PCNs can be categorized into four types: Serous cystic neoplasms (SCNs), mucinous cystic neoplasms (MCNs), intraductal papillary neoplasms (IPMNs), and other types. IPMNs are subcategorized into branch duct IPMNs (BD-IPMNs), main duct IPMNs (MD-IPMNs), and mixed IPMNs according to the type of pancreatic duct that is connected to the cysts. Other types of PCNs mainly include solid pseudopapillary neoplasms (SPNs) and cystic pancreatic neuroendocrine tumors (NETs). SPNs and pancreatic NETs should be surgically resected to eliminate their malignant potential. SCNs are regarded as benign lesions, while mucinous cysts, such as MCNs and IPMNs, are related to malignancy or have malignant potential. Unfortunately, it is difficult to achieve an accurate diagnosis of the type of PCN, making clinical decisions difficult. Histological accuracy could be improved by the development of techniques, such as endoscopic ultrasound-guided fine needle biopsy (EUS-FNB), single-operator cholangioscopy (SOC), and EUS-guided through-the-needle biopsy (EUS-TTNB)^[9-12]. However, these examination methods are challenging to perform, and this affects their wide application.

Surgical resection is an excellent way to prevent PCNs from evolving to malignancy; however, the morbidity and mortality rates related to a major pancreatic resection of a cystic lesion are 10%-40% and 1%-3%, respectively^[13-16]. Long-term surveillance may not only increase the financial burden on and psychological stress in patients but could also result in a missed malignancy. The survival rate of patients with malignant pancreatic lesions is very low^[2,17]. Therefore, a minimally invasive treatment, EUS-guided ethanol ablation, was reported by Gan *et al*^[14] in 2005 as an effective way to treat PCNs. The effectiveness and safety of EUS-guided injective ablative treatment has been verified for over 15 years. Several ablative agents, including ethanol, paclitaxel, lauromacrogol, and gemcitabine, have been effectively used to treat PCNs^[2,15,18]. While several reviews about EUS-guided ablation have been published^[19-23], no systematic review has evaluated this method in detail from patient preparation to follow-up. In the present review, we describe EUS-guided injective ablation for the treatment of PCNs with regard to the indications and contraindications, preoperative treatment, endoscopic procedure, postoperative care, efficacy and safety outcomes, and current controversies and future perspectives.

INDICATIONS AND CONTRAINDICATIONS

EUS-guided injective ablation could be considered for the following patients: (1) Those with a presumed or confirmed diagnosis of an MCN or those with an enlarging or symptomatic SCN; (2) Those with a mass diameter of at least 1 cm; (3) Those with six or fewer locules (*i.e.*, unilocular or oligolocular cystic lesions); (4) Those with an expected life expectancy; and (5) Those who provided informed consent.

The following patients were also considered for enrolment: (1) Those with a presumed or confirmed diagnosis of BD-IPMN; (2) Those with a multilocular cyst

with more than 6 locules; and (3) Those with multiple pancreatic cysts. However, the treatment response in these patients may not be as promising, and the procedure might be more challenging.

The relative contraindications for this procedure are as follows: (1) Patients with a high risk of malignant transformation, including jaundice, an enhancing mural nodule > 5 mm, a main pancreatic duct (MPD) diameter > 10 mm, an MPD stricture with pancreatic tail atrophy, and a significant solid component^[3,24]; (2) Those with a history of acute pancreatitis; and (3) Those with a short life expectancy.

The absolute contraindications were as follows: (1) A presumed or confirmed diagnosis of MD-IPMN or mixed IPMN; (2) Pregnancy; (3) Irreversible coagulopathy; (4) A high-risk operation; (5) Evidence of active acute pancreatitis or pancreatic necrosis, and (6) An inability to eliminate pancreatic cancer or signs of malignancy.

Pancreatic cysts with six or fewer locules and measuring 2 to 6 cm in diameter are predicted to respond best to ablation^[24]. The presence of too many locules affects the lavage procedure, causing some areas of the cystic wall to remain free from ablative solution, potentially leading to an unexpected result. Moreover, it is time-consuming to treat multilocular cysts because needle puncture is supposed to create communication between locules through the septum so that the ablative agent enters into each locule. There seems to be no consensus regarding the limit that cyst diameter makes a cyst unsuitable for EUS-guided ablation. It is challenging and dangerous to use this method in cysts with a diameter less than 1 cm; therefore, the maximum diameters of the cysts should be at least 1 cm^[25]. The upper limit of the cystic diameter for successful ablation also remains controversial. Most previous studies enrolled patients in whom the maximum diameter of the cyst was smaller than 5 cm^[16,25-27]; however, cysts as large as 11.9 cm have also been reported to be safely treated using this method^[28]. The risk of malignancy is significantly increased in patients with large cysts^[4], and surgical resection seems to be more suitable than EUS-guided injective ablation for large PCNs. However, further studies are warranted to define the upper limit for cyst size for this procedure. Some authors have suggested that the presence of an IPMN is not an optimal indication for EUS-guided injective ablation^[2,29]. Because of the communication between the cyst and the pancreatic duct of an IPMN, the ablative agent might escape the cyst, resulting in a poor treatment response and a higher risk of pancreatitis. In addition, IPMNs larger than 3 cm have a greater malignant potential and are not suitable for EUS-guided ablation. Some authors have suggested EUS-guided injective ablation as a promising method to treat non-neoplastic cysts, mainly pseudocysts (PCs)^[30].

PREOPERATIVE TREATMENT

Patients suspected of having PCNs should be sent for blood tests [*e.g.*, amylase, lipase, and tumor markers (mainly CEA and CA199)] prior to ablation. Enhanced pancreatic computed tomography (CT), magnetic resonance imaging (MRI), magnetic resonance cholangiopancreatography, and EUS should also be conducted to obtain an accurate diagnosis and evaluate the size, location, wall thickness, and number of septations of the tumors; the morphology of the pancreatic duct; the presence of papillae or an associated mass; and the blood supply. EUS-guided fine-needle aspiration (EUS-FNA) is also recommended for obtaining cyst fluid for biochemical and cytological examinations to aid in the diagnosis of the cyst using 19-gauge or 22-gauge needles^[4,24]. Enhanced EUS and FNB and SOC performed under EUS guidance can provide useful information for diagnosing pancreatic cysts^[9,10]. EUS-TTNB allowed a high rate of adequate specimens to be obtained for histology with an overall histological accuracy rate of 86.7%^[11]. However, its complication rate was slightly higher than that of standard EUS-FNA. It can be applied in selected patients by experienced operators.

There is some controversy regarding the use of prophylactic antibiotics. Some studies have recommended that prophylactic antibiotics be used to prevent postprocedural infection^[5,24,30,31], while other studies performed without prophylactic antibiotic administration did not have increased complication rates^[2,15,32,33].

EUS-GUIDED INJECTIVE ABLATIVE PROCEDURE

EUS-guided injective ablation is conducted with patients lying in the left-lateral position under intravenous anaesthesia. First, the cystic lesion is reidentified and recharacterized. Second, transgastric or transduodenal puncture of the cyst is performed using a 19-gauge or 22-gauge needle. A 19-gauge needle has one

advantage in that it allows the aspiration of more viscous material than can be obtained using a 22-gauge needle and can be used as a tunnel for EUS-FNB, potentially resulting in a more accurate pathological diagnosis. However, the larger diameter of the needle might also increase the possibility of procedure-related complications, such as bleeding. The use of a 22-gauge needle produced better results in small cysts (those less than 2.5 cm), while the 19-gauge needle was more suitable for cysts > 2.5 cm^[18,34]. The cyst fluid should be aspirated as much as possible, and a small amount of fluid around the tip of the needle is left within the cyst to prevent the possibility of pancreatic wall injury and ablative agent extravasation. Then, the ablative agent is injected into the cyst.

Several ablative agents, such as ethanol, paclitaxel, lauromacrogol, and gemcitabine, are available, and several ablative methods can be performed using these agents (Table 1). Ethanol was the first solution used as an ablative agent to treat PCNs. The concentration of ethanol reported in previous studies ranged from 80% to 100%, with 80% and 99% being the most commonly used concentrations^[25,27,32,35]. In 2008, paclitaxel was injected after ethanol lavage as a novel treatment for PCNs^[5]. Later, an ethanol-free ablation protocol that used a cocktail of paclitaxel and gemcitabine as an ablative solution was demonstrated to be safe and feasible^[34]. Ethanol lavage was evaluated to determine whether it could prevent malignancy in pancreatic cysts^[25]. Additionally, lauromacrogol, as a sclerosant, was first reported for the ablation of PCNs with the aid of EUS in 2017 by Linghu *et al.*^[2], who demonstrated it to be effective and safe.

The ablation procedures differ slightly among these agents. When using ethanol, the cyst cavity is lavaged for 3 to 5 min, with the cavity alternately filled and emptied^[14]. The injection volume remains unknown. Some studies have recommended that the ethanol volume should be equal to that originally aspirated^[28,32], while in other studies, the injected ethanol volume was equivalent to 50% and 90% of the fluid extracted from the cyst^[25,33]. Because ethanol should be retained for 20 to 40 min while the position of the patient was rotated to ensure that the cyst wall was completely ablated, this procedure was slightly complicated and time consuming^[24]. Ethanol must then be fully aspirated. In some studies, paclitaxel was then infused at a concentration of 2 mg/mL^[26,27], 3 mg/mL^[5,15,31], or 6 mg/mL^[15,28,31] after ethanol aspiration. The volume of the paclitaxel solution administered was the same as that of the cyst fluid that was aspirated^[5,15,29,31], and the dose of paclitaxel has been reported to range from 1.5-30 mg^[5,15,28,29]. Finally, paclitaxel is left in the cyst cavity.

Lauromacrogol is a sclerosant that has been widely used in the treatment of esophageal and gastric variceal bleeding. It was initially reported to treat PCNs by Linghu *et al.*^[2] in 2017. Lauromacrogol (Lauromacrogol Injection, 10 mg/mL; Tianyu Pharmaceutical Co. Ltd., Shanxi, China) lavage was also performed for 3 to 5 min to increase its concentration in the cyst. However, it was not necessary to retain lauromacrogol in the tumor for 20-40 min. Approximately 2-10 mL of pure lauromacrogol was left in the cyst cavity.

Paclitaxel (3 mg/mL) and gemcitabine (19 mg/mL) were mixed to make a paclitaxel-gemcitabine cocktail. The cocktail was infused using a 30-cc syringe custom fitted to a high-pressure gun to allow timely infusion of the cocktail. The upper limit for the volume of the chemotherapeutic cocktail was 8 mL, as per Food and Drug Administration stipulations^[18,34]. Two prospective, randomized, double-blinded studies were reported to evaluate whether ethanol is necessary for EUS-guided pancreatic cyst ablation. Patients underwent lavage with either 80% ethanol or normal saline, followed by the infusion of an admixture of paclitaxel and gemcitabine. These studies demonstrated that ethanol is not required for effective EUS-guided pancreatic cyst ablation but is likely to cause more complications^[18,34].

Finally, the needle was retrieved, and the needle puncture on the gastric or duodenal wall was carefully examined.

POSTOPERATIVE CARE AND FOLLOW-UP

After ablation, patients should be carefully monitored to record any problems or symptoms. Complications, such as abdominal pain, abdominal distention, fever, vomiting, hypotension, hematemesis, hematochezia, and bleeding, should be recorded. Serum amylase and lipase levels and complete blood counts should be assessed the morning after the procedure. However, in some studies, the patients were discharged from the hospital only 2 h post procedure without any blood tests^[18,25,26,32].

Whether proton pump inhibitors (PPIs) should be used in these patients is controversial. Most studies have not mentioned the use of PPIs^[18,26,28,32,35], however,

Table 1 Different injective ablative treatment methods

Agent	Concentration	Infusing method	Injected volume	Agent left
Ethanol	80%-100%, mainly 80%-99%	Single agent	50%, 90%, or 100% of the fluid extracted from the cyst	No ethanol
Ethanol + paclitaxel	Ethanol: 99%; paclitaxel: 2 mg/mL, 3 mg/mL, or 6 mg/mL	Paclitaxel was injected after the full aspiration of ethanol	Equal to the volume of cyst fluid aspirated	All paclitaxel
Lauromacrogol	10 mg/mL	Single agent	Ensuring the cystic wall completely soaked in solution	Mainly 2-10 mL lauromacrogol
Paclitaxel + gemcitabine	Paclitaxel: 3 mg/mL; gemcitabine: 19 mg/mL	Mixed to make a paclitaxel-gemcitabine cocktail	Equal to the original amount aspirated and the upper limit is 8 mL	All cocktail

Linghu *et al*^[2] intravenously administered PPI for 3 d, followed by oral PPI intake for 3 to 7 d. Whether the use of PPIs decreases the possibility of pancreatitis related to EUS-guided ablation remains unknown. In addition, there is no consensus regarding the use of antibiotics. Some studies did not use any antibiotics^[5,15,25,31,32], while others included the administration of intravenous or oral antibiotics^[2,26,35]. Octreotide was intravenously administered for at least one day until the serum amylase level returned to normal in a study of lauromacrogol^[2]. Patients suffering from severe pain or suspected pancreatitis are recommended to undergo abdominal ultrasound or CT.

This procedure had a shortened hospital time of 2 h postprocedure^[18,25,26,32,34,35], and several studies reported that patients could be discharged 2 d after the procedure if no complications were noted^[5,15,28,31].

However, the appropriate follow-up period remains controversial. Most studies have recommended that follow-up pancreatic CT or MRI should be performed 3 mo after the last planned cyst lavage and then at 6-mo intervals and then annually thereafter^[2,5,15,16,27,29]. More frequent follow-up CT scans were recommended for patients with a persistent cyst at the first follow-up, in whom scans should be performed at 3-mo intervals instead of 6-mo intervals^[15]. EUS was also regarded as a follow-up examination in some studies^[16,27,33]. An international expert panel stated that patients should undergo cross-sectional imaging at 6-mo intervals for the first year and then annually thereafter^[24]. Another study suggested that abdominal imaging should be repeated 3-4 mo and 12 mo after the second EUS^[26]. In several studies, patients were discharged 2 d after ablation if no complications were noted^[15,31].

EVALUATION METHOD

Treatment responses can be divided into three levels: Complete resolution (CR), partial resolution (PR), and persistent cyst. Several methods can be used to evaluate the treatment response; these include a decrease in the cystic surface area^[32,35], volume^[2,5,15,18,26,29,31,34], or diameter [Response Evaluation Criteria in Solid Tumors (RECIST)]^[14,16]. However, the RECIST aim to evaluate the treatment response of solid neoplasms, and therefore seem unsuitable for cystic lesions^[6]. It appears that it may be more convincing to determine the effectiveness of ablation based on changes in cystic volume. The volume method was assessed by comparing the volume recorded before the procedure [original volume (OV)] with that obtained at the follow-up [final volume (FV)]. CR was defined as a FV < 5% of the OV; PR was defined as a FV ranging from 5% to 25% of the OV; and a persistent cyst was defined as an FV > 25% of the OV. However, studies exploring whether a decrease in the volume is related to low malignant potential are lacking.

As the OV evaluation method is less detailed, we suggest a new method. In this method, the treatment response can be divided into five levels, with CR defined as a FV ≤ 10% of the OV; PR as 10% of the OV < FV ≤ 25% of the OV; fair resolution as 25% of the OV < FV ≤ 75% of the OV; persistent cyst as 75% of the OV < FV ≤ 100% of the OV; and progressive cyst as an FV ≥ 100% of the OV. However, this method needs to be verified.

Re-ablation could be considered for patients with PR, persistent cysts, or progressive cysts if the cysts are larger than 1 cm. However, it remains unknown whether surgical resection should be recommended if the effectiveness of EUS-guided re-ablation is unsatisfactory. For patients who did not achieve CR, the follow-up can involve more frequent appointments and last longer.

TREATMENT EFFICIENCY

In all, 16 original articles have been reported on EUS-guided injective ablation; of these, six used ethanol, seven used ethanol lavage followed by paclitaxel, one used lauromacrogol, and two used the paclitaxel and gemcitabine cocktail (Table 2).

In the first study to explore EUS-guided cyst ablation with ethanol, Gan *et al*^[14] enrolled 25 patients with cysts of a mean diameter of 19.4 mm to be treated by 5%-80% ethanol. CR was achieved in eight (34.8%) of the 23 patients who completed a follow-up period of 12 mo. Later studies reported a CR rate ranging from 8.7% to 84.6%, with study sizes ranging from 13 to 42 patients^[25,32,33,35]. Although the CR rate for ethanol ablation varies widely, 3 studies reported a CR rate of approximately 35%.

The effectiveness of ethanol alone seems limited^[36]. To improve treatment responses, paclitaxel, a widely used chemotherapeutic agent, has been used as an agent following ethanol lavage to treat PCNs. After a follow-up period of 9-72 mo, the CR rates for this treatment have ranged from 50.0% to 78.6%^[5,15,26-29,31], with the average CR rate for EUS-guided ethanol lavage with paclitaxel injection being approximately 60.0%, which is slightly higher than that of ethanol ablation.

Lauromacrogol is a sclerosant with a mild anesthetic effect that was initially reported as a treatment for PCNs by Linghu *et al*^[2]. Twenty-nine patients underwent EUS-guided ablation with lauromacrogol; of these 7 underwent a second ablation, leading to a total of 36 treatments. Among the 36 treatments, 29 completed a follow-up at 3 mo after the first or second ablation, and 11 (37.9%) achieved CR (Figures 1 and 2). The CR rate for lauromacrogol was similar to that of ethanol and slightly lower than that of ethanol lavage with paclitaxel injection. However, Linghu *et al*^[2] evaluated ablative treatment based solely on 3-mo imaging examinations after ablation despite a mean follow-up period of 9 mo. Moreover, the response to each ablative treatment rather than that of each patient was documented, leading to an underestimation of ablative effectiveness. Further studies with longer follow-up periods are needed to evaluate the effectiveness of this promising agent.

To evaluate whether ethanol is required for effective PCN ablation and related to complication rates, Moyer *et al*^[18] performed a prospective, double-blind trial of 39 patients with MCNs and compared the effects of 80% ethanol (control group) to those of normal saline (ethanol-free group). All enrolled patients in the two groups were then infused with an admixture of paclitaxel and gemcitabine. The authors concluded that ethanol was not required for effective EUS-guided pancreatic cyst ablation because the CR rates in the two groups were similar, and the removal of ethanol decreased the complication rate. Their results also demonstrated that the paclitaxel-gemcitabine cocktail provided no advantages over the current standard consisting of alcohol lavage followed by paclitaxel alone.

Several comparative studies have further evaluated factors that may predict improved effectiveness. DeWitt *et al*^[35] designed a multicenter, randomized, double-blind study to determine whether EUS-guided ethanol lavage performed better than saline lavage. They concluded that EUS-guided ethanol lavage decreased the size of the PCNs to a greater extent than was achieved by saline lavage and did not increase the complication rate. DiMaio *et al*^[32] evaluated the effectiveness of multiple ethanol lavage sessions and found that the size and surface area of the treated PCNs decreased more following two ethanol lavage treatments than with only one ethanol lavage treatment.

Multiple ethanol lavage sessions might lead to a high rate of image-defined cyst resolution. Some studies compared the CR group and the non-CR group^[2,15,16,18,25,27,29]. Cyst diameter was reported to be a predictive factor for CR in three studies, indicating that a small cyst may be ablated effectively^[15,16,29]; however, Moyer *et al*^[18] and Linghu *et al*^[2] reported that the initial diameter did not affect the treatment response. The study of Oh *et al*^[15] revealed that cystic volume predicted an ablative response, inconsistent with other reports^[2,25]. Most studies have reported that the diagnosis of PCNs has no effect on the ablative results^[2,15,18,29]; however, Park *et al*^[16] professed doubt in these findings. They found that patients with IPMNs were less likely to achieve CR than those with other tumor types. In the univariate and multivariate analyses, Choi *et al*^[29] found that a unilocular form predicted CR; however, other studies described inconsistent results^[2,16,18,25]. No significant difference was revealed in age, sex, or cyst location between the CR and non-CR groups^[2,16,25,29]. Kim *et al*^[27] prospectively studied sonographic and cyst fluid cytological changes after EUS-guided ablation and found that there was no significant difference in the frequency of sonographic or cytological features between CR and non-CR patients.

Mutant DNA appeared to be eliminated after EUS-guided ethanol lavage with paclitaxel^[26]. In another study, four patients with MCNs underwent surgical resection after ablation and histologic findings showed cyst epithelial ablation ranging from 0% (saline solution alone) to 50% to 100% (1 or 2 ethanol lavages), and no evidence of

Table 2 Studies of EUS-guided ablation using different agents

Ref.	Year	No. of patients	Ablative agent	Mean/median diameter (mm)	Diagnosis, n (%)				Follow-up (mo)	Treatment effectiveness, n (%)		No. of complications, n (%)
					SCN	MCN	IPMN	Others		CR	PR	
Gan <i>et al</i> ^[14]	2005	25	5%-80% ethanol	19.4	3 (12)	13 (52)	4 (16)	5 (20)	12	8 (34.8)	2 (8.7)	0
DeWitt <i>et al</i> ^[35]	2009	42	80% ethanol vs saline	22.4	5 (11.9)	17 (40.5)	17 (40.5)	3 (7.1)	3-4 mo after second lavage	12 (33.3)	NA	12 (28.6): 10 (abdominal pain), 1 (intracystic hemorrhage), 1 (pancreatitis)
DiMaio <i>et al</i> ^[32]	2011	13	80% ethanol	20.1	0	0	13 (100)	0	3-6 mo after second lavage	5 (38.4)	NA	1 (7.7): 1 (abdominal pain)
Caillol <i>et al</i> ^[33]	2012	13	99% ethanol	24	0	13 (100)	0	0	26	11 (84.6)	NA	0
Gómez <i>et al</i> ^[25]	2016	23	80% ethanol	27.5	0	4 (17.4)	19 (82.6)	0	40	2 (8.7)	NA	2 (8.8): 1 (abdominal pain), 1 (pancreatitis)
Park <i>et al</i> ^[16]	2016	91	99% ethanol	58	33 (36.3)	12 (13.2)	9 (9.9)	37 (40.6)	40	41 (45.1)	37 (40.7)	29 (31.9): 18 (abdominal pain), 8 (fever), 3 (pancreatitis)
Oh <i>et al</i> ^[5]	2008	14	99% ethanol + paclitaxel	25.5	3 (21.5)	2 (14)	NA	9 (64.5)	9	11 (78.6)	2 (14.3)	8 (57.1): 1 (pancreatitis), 1 (abdominal pain), 6 (hyperamylasemia)
Oh <i>et al</i> ^[31]	2009	10	99% ethanol + paclitaxel	29.5	4 (40)	3 (30)	3 (30)	0	8.5	6 (60.0)	2 (20.0)	1 (10): 1 (pancreatitis)
Oh <i>et al</i> ^[15]	2011	52	99% ethanol + paclitaxel	31.8	15 (29)	9 (17)	NA	28 (54)	20	29 (61.7)	6 (12.8)	4 (7.7): 1 (pancreatitis), 1 (abdominal pain), 1 (fever), 1 (splenic vein obliteration)
Oh <i>et al</i> ^[28]	2014	10	99% ethanol + paclitaxel	39.5	NA	NA	NA	NA	12	NA	NA	7 (70): 5 (abdominal pain), 1 (vomiting), 1 (intracystic bleeding)
DeWitt <i>et al</i> ^[26]	2014	22	99% ethanol + paclitaxel	24	4 (18)	6 (27)	12 (55)	0	27	10 (50.0)	5 (25.0)	9 (40.1): 4 (abdominal pain), 3 (pancreatitis), 1 (peritonitis), 1 (gastric wall cyst)

Kim <i>et al</i> ^[27]	2017	36	100% ethanol or (ethanol + paclitaxel)	25.8	5 (13.9)	16 (44.4)	14 (38.9)	1 (2.8)	22.3	19 (55.9)	7 (19.4)	9 (25): 4 (pancreatitis), 4 (abdominal pain), 1 (intracystic hemorrhage)
Choi <i>et al</i> ^[29]	2017	164	99% ethanol + paclitaxel	32	16 (9.8)	71 (43.3)	11 (6.1)	66 (40.2)	72	114 (72.2)	31 (19.6)	15 (9.1): 6 (pancreatitis), 2 (pseudocyst), 2 (abscess), 1 (intracystic hemorrhage), 1 (pericyclic spillage), 1 (pancreatic duct stricture), 1 (splenic vein obstruction), 1 (portal vein thrombosis)
Linghu <i>et al</i> ^[2]	2017	29	Lauromacrogol	28.6	12 (41.4)	15 (51.7)	0	2 (6.9)	9	11 (37.9)	9 (31.0)	3 (8.3): 2 (pancreatitis), 1 (fever)
Moyer <i>et al</i> ^[34]	2016	10	80% ethanol or Saline + paclitaxel and gemcitabine	29	0	7 (70%)	2 (20%)	1 (10%)	12	Ethanol free 4 (66.7) ethanol 3 (75.0)	NA	1 (10): 1 (pancreatitis)
Moyer <i>et al</i> ^[18]	2017	39	80% ethanol or saline + paclitaxel and gemcitabine	25	0	9 (23.1)	27 (69.2)	3 (7.7)	12	Ethanol free arm 14 (66.7) ethanol arm 11 (61.1)	NA	5 (12.8): 4 (abdominal pain), 1 (pancreatitis)

SCN: Serous cystic neoplasm; MCN: Mucinous cystic neoplasm; IPMN: Intraductal papillary neoplasm; CR: Complete response; PR: Partial complete; NA: Not available.

dysplasia or malignancy after resection was observed^[35]. Oh *et al*^[15] found that the histopathologic extents of epithelial lining denudation were 25%, 40%, 100%, and 0% in four patients who underwent surgical resection after ablation. The study by Choi *et al*^[29] enrolled 164 patients, 12 of whom received surgical resection. The histopathological extents of epithelial lining denudation were 25% ($n = 2$), 40% ($n = 2$), 100% ($n = 7$), and 0% ($n = 1$)^[29].

In a study on the largest patient sample to date ($n = 164$), 114 (72.2%) patients achieved CR, and 112 (98.3%) remained in remission at the 6-year follow-up^[29]. The author concluded that EUS-guided ablation was effective and durable and had a high CR rate and low recurrence rate during the long-term follow-up.

SAFETY PROFILE

Although EUS-guided injective ablation is regarded as a minimally invasive and safe procedure^[37], some procedure-related complications have been reported (Table 2). Abdominal pain is the most common complication, followed by pancreatitis.

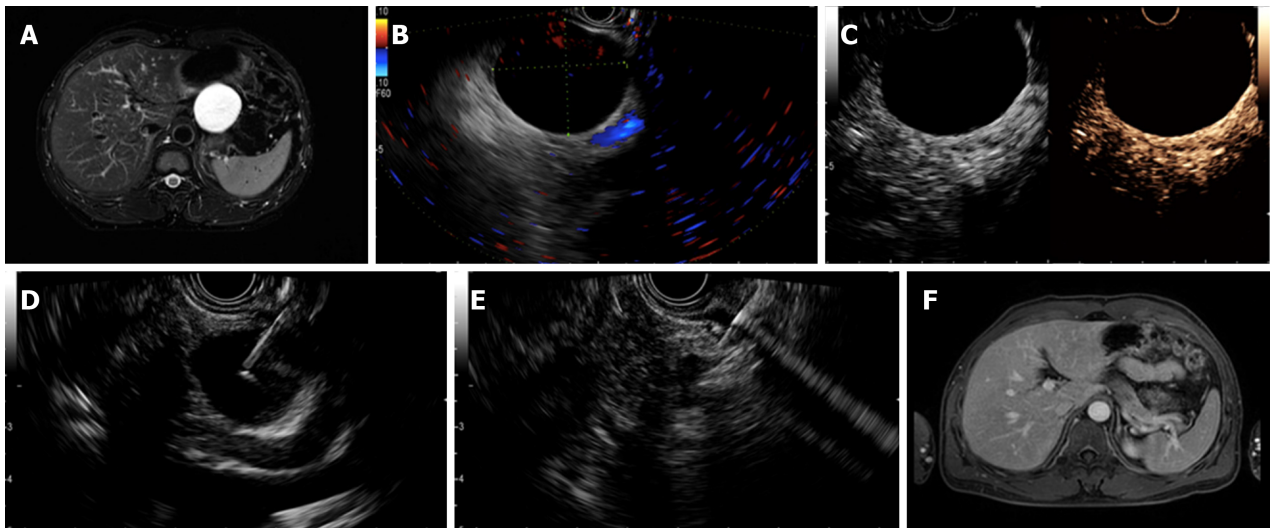


Figure 1 Complete resolution was achieved in a patient with a serous cystic neoplasm. A: Magnetic resonance imaging (MRI) before endoscopic ultrasound-guided (EUS-guided) ablation showing a 52 mm × 52 mm × 41 mm cyst located in the pancreatic body; B: EUS evaluation of the cyst showing a 46.0 mm × 39.0 mm cyst in the body; C: Enhanced EUS view showing no obvious enhancement of the cystic wall; D: EUS-guided fine needle aspiration to aspirate cyst fluid; E: Injection of the ablative agent through the needle; F: Follow-up MRI at 4 mo after ablation showing complete resolution.

Intracystic hemorrhage has also been reported in some studies^[27-29,35]. Some rare complications, such as fever, splenic vein obliteration, portal vein thrombosis, hyperamylasemia, vomiting, peritonitis, gastric wall cyst, PC, abscess, pericystic spillage, and pancreatic duct stricture, have also been reported.

In one study, the total complication rate of EUS-guided ethanol ablation was 21.2%, while that of EUS-guided ethanol lavage with paclitaxel was 15%^[37]. EUS-guided lauromacrogol ablation was successfully performed in all 36 treatments, while mild pancreatitis occurred in two treatments and moderate fever in one treatment^[2]. The complication rate was 8.3%. Moyer *et al*^[18,34] performed two studies using EUS-guided ablation with an admixture of paclitaxel and gemcitabine. Abdominal pain and pancreatitis were noted, with the total complication rate ranging from 10% to 12.8%. The complications related to EUS-guided ablation were similar to those related to EUS-FNA. Most of these complications were minor and could recover with conservative management. However, Oh *et al*^[38] reported one case in which portal vein thrombosis occurred after EUS-guided ethanol lavage with paclitaxel injection. In their study, this 68-year-old woman with a 5.2 cm × 4.5 cm cyst at the head of the pancreas died of portal vein thrombosis. Chun *et al*^[39] reported a case of duodenal stricture induced by necrotizing pancreatitis following EUS-guided ethanol ablation. The 61-year-old patient was suspected of having BD-IPMN and treated with 99% ethanol lavage. He was conservatively managed for acute interstitial pancreatitis after ablation. Unexpectedly, aggravated abdominal pain and vomiting occurred, and abdominal CT demonstrated walled-off necrosis around the pancreatic head and duodenal stricture. A total of five consecutive sessions of endoscopic balloon dilatation were performed to relieve his obstructive symptoms. Clinicians should therefore operate carefully enough to avoid these rare but severe complications.

The incidences of abdominal pain in EUS-guided ethanol with and without paclitaxel were 4% and 14.5%, respectively^[7,37]. Abdominal pain might result from the EUS operation, EUS-FNA procedure, or the use of ablative agents. Linghu *et al*^[2] reported that because of its anesthetic effect, lauromacrogol performed better than ethanol and paclitaxel in relieving pain during and after ablation. No patients suffering from abdominal pain were noted in this study.

Pancreatitis was also common, with incidences of 5% and 2.4% in EUS-guided ethanol with and without paclitaxel, respectively^[7,37]. MD-IPMN was regarded as an absolute contraindication for EUS-guided injective ablation mainly because of the strong possibility of procedure-related pancreatitis. BD-IPMNs were theoretically more likely to result in procedure-related pancreatitis than SCNs and MCNs; however, a study by DiMaio *et al*^[32] demonstrated that EUS-guided ethanol ablation was safe in patients with BD-IPMNs, with only one (7.7%) patient experiencing postprocedure minor abdominal pain. When patients complained of severe abdominal pain with high levels of lipase and/or amylase, they were asked to undergo abdominal CT.

Oh *et al*^[28] analyzed the plasma paclitaxel concentration after EUS-guided

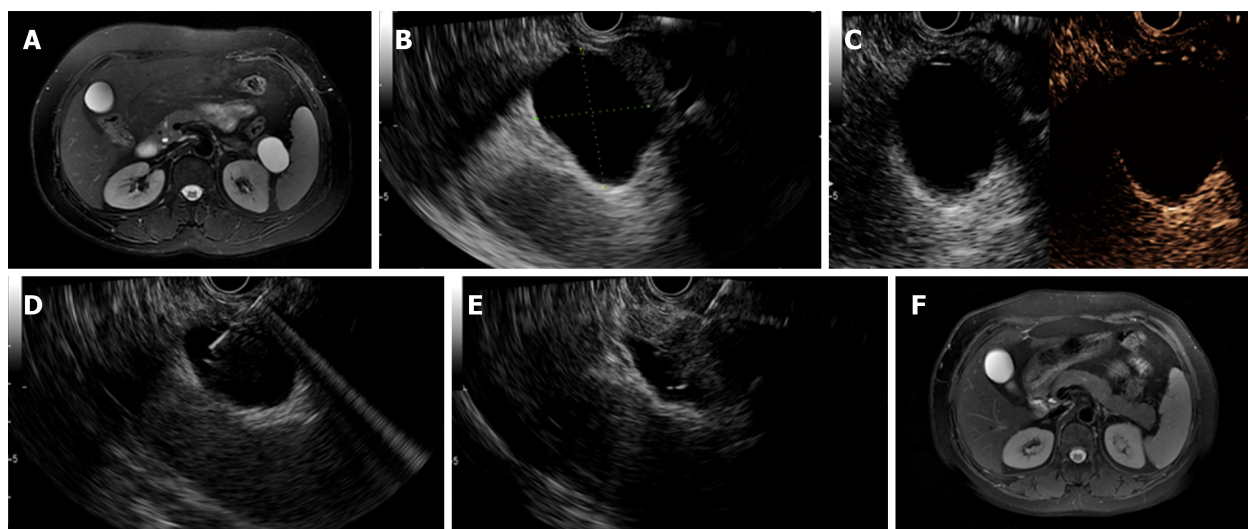


Figure 2 Complete resolution was achieved in a patient with a mucinous cystic neoplasm. A: Magnetic resonance imaging (MRI) before endoscopic ultrasound-guided (EUS-guided) ablation showing a 38.0 mm × 26.0 mm cyst located in the pancreatic body; B: EUS evaluation of the cyst showing a 37.0 mm × 32.0 mm cyst located in the pancreatic tail; C: Enhanced EUS view showing moderate enhancement of the cystic wall; D: EUS-guided fine needle aspiration to aspirate cyst fluid; E: Injection of the ablative agent through the needle; F: Follow-up MRI at 3 mo after ablation showing complete resolution.

pancreatic cyst ablation and found that it was nearly undetectable and thus unlikely to cause systemic side effects. These findings revealed that a paclitaxel dose of 6 mg/mL was safe.

TIPS AND TRICKS

Several tips and tricks are recommended to facilitate the effectiveness and safety of ablation. First, a small amount of cyst fluid should be left around the tip of the needle before the ablation process is performed to prevent the needle from damaging the surrounding pancreatic wall^[24]. Either 19-gauge or 22-gauge needles can be used in EUS-guided ethanol ablation. When the cyst fluid is too viscous to be aspirated, normal saline can be injected to dilute the fluid, and a 19-gauge needle is recommended in these cases. When the cyst is small or transduodenal puncture of the cyst occurs, a 22-gauge needle will perform well. The ablative agent should be used to lavage the cyst cavity for 3 to 5 min to increase the concentration of ethanol in the cyst. Finally, the agent concentration in the cyst should be roughly equal to its original concentration before being injected to the cyst.

CURRENT CONTROVERSIES AND PERSPECTIVES

Several technical challenges are associated with EUS-guided injective ablation. First, the optimal concentration used to achieve the best CR rate remains unknown. Different concentrations of ethanol have been used; their results have not been compared. Only one study has evaluated lauromacrogol ablation. Further studies are needed to determine the appropriate concentration of this drug to use. Second, no study has reported the lowest volume of agent that should be left in the cyst to achieve the best treatment response. Third, the optimal re-ablation time remains unknown. Park *et al*^[16] reported that no more than 6 mo is needed for most patients undergoing EUS-guided ethanol ablation therapy to achieve CR. Another study by Oh *et al*^[15] reported that CR was achieved 6-12 mo after ablation in 57.1% of patients. It remains unclear whether re-ablation should be considered if the patient does not achieve CR. Fourth, we used imaging changes to evaluate the treatment response. However, whether a decrease in size indicates low malignant potential remains controversial. Moreover, further double-blind, randomized controlled studies are needed to compare the effectiveness among ethanol, ethanol with paclitaxel, lauromacrogol, and the paclitaxel and gemcitabine cocktail.

Although several challenges are associated with EUS-guided injective ablation, it is a promising and minimally invasive method for treating PCNs that has excellent effectiveness. The surgical resection of pancreatic lesions can severely influence patients' quality of life, especially when the lesions are located in the pancreatic head.

Compared with surgical resection, EUS-guided injective ablation provides doctors and patients with a safer choice. We believe that with the optimization of this procedure, it will have a significant effect on PCNs. With the development of endoscopic equipment and research on new agents, this procedure may be indicated for other pancreatic lesions, such as SPNs, NETs, PCs, and even cancer.

CONCLUSION

EUS-guided injective ablation is a minimally invasive, effective, and safe treatment for PCNs in selected patients. Most procedure-related complications are minor and can recover with conservative management. Ethanol, paclitaxel, gemcitabine, and lauromacrogol have been used as ablative agents; however, it is difficult to state which is better. Further studies on EUS-guided ablation and additional randomized trials that compare different agents are warranted to optimize this treatment.

REFERENCES

- 1 **Brugge WR**, Lauwers GY, Sahani D, Fernandez-del Castillo C, Warshaw AL. Cystic neoplasms of the pancreas. *N Engl J Med* 2004; **351**: 1218-1226 [PMID: 15371579 DOI: 10.1056/NEJMra031623]
- 2 **Linghu E**, Du C, Chai N, Li H, Wang Z, Sun Y, Xu W, Guo X, Ning B, Sun L, Zhang W, Wang X, Tang P, Feng J. A prospective study on the safety and effectiveness of using lauromacrogol for ablation of pancreatic cystic neoplasms with the aid of EUS. *Gastrointest Endosc* 2017; **86**: 872-880 [PMID: 28365355 DOI: 10.1016/j.gie.2017.03.1525]
- 3 **European Study Group on Cystic Tumours of the Pancreas**. European evidence-based guidelines on pancreatic cystic neoplasms. *Gut* 2018; **67**: 789-804 [PMID: 29574408 DOI: 10.1136/gutjnl-2018-316027]
- 4 **Scheiman JM**, Hwang JH, Moayyedi P. American gastroenterological association technical review on the diagnosis and management of asymptomatic neoplastic pancreatic cysts. *Gastroenterology* 2015; **148**: 824-48.e22 [PMID: 25805376 DOI: 10.1053/j.gastro.2015.01.014]
- 5 **Oh HC**, Seo DW, Lee TY, Kim JY, Lee SS, Lee SK, Kim MH. New treatment for cystic tumors of the pancreas: EUS-guided ethanol lavage with paclitaxel injection. *Gastrointest Endosc* 2008; **67**: 636-642 [PMID: 18262182 DOI: 10.1016/j.gie.2007.09.038]
- 6 **Kimura W**, Nagai H, Kuroda A, Muto T, Esaki Y. Analysis of small cystic lesions of the pancreas. *Int J Pancreatol* 1995; **18**: 197-206 [PMID: 8708390 DOI: 10.1007/BF02784942]
- 7 **Canakis A**, Law R, Baron T. An updated review on ablative treatment of pancreatic cystic lesions. *Gastrointest Endosc* 2020; **91**: 520-526 [PMID: 31593694 DOI: 10.1016/j.gie.2019.09.037]
- 8 **Fernández-Del Castillo C**. EUS treatment of pancreatic cysts: let's keep the alcohol (and the chemotherapy) locked in the cupboard. *Gastroenterology* 2011; **140**: 2144-2145 [PMID: 21530514 DOI: 10.1053/j.gastro.2011.02.077]
- 9 **Chai N**, Feng J, Guo Y, Li H, Ning B, Wang X, Wang Y, Wang Y, Zhai Y, Linghu E. Preliminary study of single-operator cholangioscopy for diagnosing pancreatic cystic lesions. *Gastrointest Endosc* 2017; **86**: 208-218 [PMID: 28185905 DOI: 10.1016/j.gie.2017.01.038]
- 10 **Barresi L**, Tarantino I, Traina M, Granata A, Curcio G, Azzopardi N, Baccarini P, Liotta R, Fornelli A, Maimone A, Jovine E, Cennamo V, Fabbri C. Endoscopic ultrasound-guided fine needle aspiration and biopsy using a 22-gauge needle with side fenestration in pancreatic cystic lesions. *Dig Liver Dis* 2014; **46**: 45-50 [PMID: 23916241 DOI: 10.1016/j.dld.2013.06.008]
- 11 **Tacelli M**, Celsa C, Magro B, Barchiesi M, Barresi L, Capurso G, Arcidiacono PG, Cammà C, Crinò SF. Diagnostic performance of endoscopic ultrasound through-the-needle microforceps biopsy of pancreatic cystic lesions: Systematic review with meta-analysis. *Dig Endosc* 2020 [PMID: 31912580 DOI: 10.1111/den.13626]
- 12 **Crinò SF**, Bernardoni L, Brozzi L, Barresi L, Malleo G, Salvia R, Frulloni L, Sina S, Parisi A, Remo A, Larghi A, Gabbriellini A, Manfrin E. Association between macroscopically visible tissue samples and diagnostic accuracy of EUS-guided through-the-needle microforceps biopsy sampling of pancreatic cystic lesions. *Gastrointest Endosc* 2019; **90**: 933-943 [PMID: 31100310 DOI: 10.1016/j.gie.2019.05.009]
- 13 **Nemeş R**, Curcă T, Paraliu T, Munteanu M, Paşalega M, Dincă N, Meşină C, Martin L, Cheie M, Talpoş L, Martin R. Cystic tumors of the pancreas. Considerations upon 34 operated cases. *Rom J Gastroenterol* 2002; **11**: 303-308 [PMID: 12532201]
- 14 **Gan SI**, Thompson CC, Lauwers GY, Bounds BC, Brugge WR. Ethanol lavage of pancreatic cystic lesions: initial pilot study. *Gastrointest Endosc* 2005; **61**: 746-752 [PMID: 15855986 DOI: 10.1016/s0016-5107(05)00320-2]
- 15 **Oh HC**, Seo DW, Song TJ, Moon SH, Park DH, Soo Lee S, Lee SK, Kim MH, Kim J. Endoscopic ultrasonography-guided ethanol lavage with paclitaxel injection treats patients with pancreatic cysts. *Gastroenterology* 2011; **140**: 172-179 [PMID: 20950614 DOI: 10.1053/j.gastro.2010.10.001]
- 16 **Park JK**, Song BJ, Ryu JK, Paik WH, Park JM, Kim J, Lee SH, Kim YT. Clinical Outcomes of Endoscopic Ultrasonography-Guided Pancreatic Cyst Ablation. *Pancreas* 2016; **45**: 889-894 [PMID: 26765962 DOI: 10.1097/MPA.0000000000000567]
- 17 **Le Borgne J**, de Calan L, Partensky C. Cystadenomas and cystadenocarcinomas of the pancreas: a multiinstitutional retrospective study of 398 cases. French Surgical Association. *Ann Surg* 1999; **230**: 152-161 [PMID: 10450728 DOI: 10.1097/0000658-199908000-00004]
- 18 **Moyer MT**, Sharzei S, Mathew A, Levenick JM, Headlee BD, Blandford JT, Heisey HD, Birkholz JH, Ancrile BB, Maranki JL, Gusani NJ, McGarrity TJ, Dye CE. The Safety and Efficacy of an Alcohol-Free Pancreatic Cyst Ablation Protocol. *Gastroenterology* 2017; **153**: 1295-1303 [PMID: 28802565 DOI: 10.1053/j.gastro.2017.08.009]
- 19 **Nakai Y**, Isayama H, Itoi T, Yamamoto N, Kogure H, Sasaki T, Hirano K, Tada M, Koike K. Role of endoscopic ultrasonography in pancreatic cystic neoplasms: where do we stand and where will we go? *Dig Endosc* 2014; **26**: 135-143 [PMID: 24219338 DOI: 10.1111/den.12202]

- 20 **Kandula M**, Moole H, Cashman M, Volmar FH, Bechtold ML, Puli SR. Success of endoscopic ultrasound-guided ethanol ablation of pancreatic cysts: a meta-analysis and systematic review. *Indian J Gastroenterol* 2015; **34**: 193-199 [PMID: 26108653 DOI: 10.1007/s12664-015-0575-2]
- 21 **Zhang WY**, Li ZS, Jin ZD. Endoscopic ultrasound-guided ethanol ablation therapy for tumors. *World J Gastroenterol* 2013; **19**: 3397-3403 [PMID: 23801831 DOI: 10.3748/wjg.v19.i22.3397]
- 22 **Lakhtakia S**, Seo DW. Endoscopic ultrasonography-guided tumor ablation. *Dig Endosc* 2017; **29**: 486-494 [PMID: 28171697 DOI: 10.1111/den.12833]
- 23 **Kim J**. Endoscopic Ultrasound-Guided Treatment of Pancreatic Cystic and Solid Masses. *Clin Endosc* 2015; **48**: 308-311 [PMID: 26240804 DOI: 10.5946/ce.2015.48.4.308]
- 24 **Teoh AY**, Seo DW, Brugge W, Dewitt J, Kongkam P, Linghu E, Moyer MT, Ryu JK, Ho KY. Position statement on EUS-guided ablation of pancreatic cystic neoplasms from an international expert panel. *Endosc Int Open* 2019; **7**: E1064-E1077 [PMID: 31475223 DOI: 10.1055/a-0959-5870]
- 25 **Gómez V**, Takahashi N, Levy MJ, McGee KP, Jones A, Huang Y, Chari ST, Clain JE, Gleeson FC, Pearson RK, Petersen BT, Rajan E, Vege SS, Topazian MD. EUS-guided ethanol lavage does not reliably ablate pancreatic cystic neoplasms (with video). *Gastrointest Endosc* 2016; **83**: 914-920 [PMID: 26363331 DOI: 10.1016/j.gie.2015.08.069]
- 26 **DeWitt JM**, Al-Haddad M, Sherman S, LeBlanc J, Schmidt CM, Sandrasegaran K, Finkelstein SD. Alterations in cyst fluid genetics following endoscopic ultrasound-guided pancreatic cyst ablation with ethanol and paclitaxel. *Endoscopy* 2014; **46**: 457-464 [PMID: 24770971 DOI: 10.1055/s-0034-1365496]
- 27 **Kim KH**, McGreevy K, La Fortune K, Cramer H, DeWitt J. Sonographic and cyst fluid cytologic changes after EUS-guided pancreatic cyst ablation. *Gastrointest Endosc* 2017; **85**: 1233-1242 [PMID: 27650271 DOI: 10.1016/j.gie.2016.09.011]
- 28 **Oh HC**, Seo DW, Kim SH, Min B, Kim J. Systemic effect of endoscopic ultrasonography-guided pancreatic cyst ablation with ethanol and paclitaxel. *Dig Dis Sci* 2014; **59**: 1573-1577 [PMID: 24474574 DOI: 10.1007/s10620-014-3037-2]
- 29 **Choi JH**, Seo DW, Song TJ, Park DH, Lee SS, Lee SK, Kim MH. Long-term outcomes after endoscopic ultrasound-guided ablation of pancreatic cysts. *Endoscopy* 2017; **49**: 866-873 [PMID: 28511236 DOI: 10.1055/s-0043-110030]
- 30 **DeWitt J**, DiMaio CJ, Brugge WR. Long-term follow-up of pancreatic cysts that resolve radiologically after EUS-guided ethanol ablation. *Gastrointest Endosc* 2010; **72**: 862-866 [PMID: 20883866 DOI: 10.1016/j.gie.2010.02.039]
- 31 **Oh HC**, Seo DW, Kim SC, Yu E, Kim K, Moon SH, Park DY, Lee SS, Lee SK, Kim MH. Septated cystic tumors of the pancreas: is it possible to treat them by endoscopic ultrasonography-guided intervention? *Scand J Gastroenterol* 2009; **44**: 242-247 [PMID: 18949629 DOI: 10.1080/00365520802495537]
- 32 **DiMaio CJ**, DeWitt JM, Brugge WR. Ablation of pancreatic cystic lesions: the use of multiple endoscopic ultrasound-guided ethanol lavage sessions. *Pancreas* 2011; **40**: 664-668 [PMID: 21562447 DOI: 10.1097/MPA.0b013e3182128d06]
- 33 **Caillol F**, Poincloux L, Bories E, Cruzille E, Pesenti C, Darcha C, Poizat F, Monges G, Raoul JL, Bommelaer G, Giovannini M. Ethanol lavage of 14 mucinous cysts of the pancreas: A retrospective study in two tertiary centers. *Endosc Ultrasound* 2012; **1**: 48-52 [PMID: 24949335 DOI: 10.7178/eus.01.008]
- 34 **Moyer MT**, Dye CE, Sharzei S, Ancrile B, Mathew A, McGarrity TJ, Gusani N, Yee N, Wong J, Levenick J, Dougherty-Hamod B, Mathers B. Is alcohol required for effective pancreatic cyst ablation? The prospective randomized CHARM trial pilot study. *Endosc Int Open* 2016; **4**: E603-E607 [PMID: 27227122 DOI: 10.1055/s-0042-105431]
- 35 **DeWitt J**, McGreevy K, Schmidt CM, Brugge WR. EUS-guided ethanol versus saline solution lavage for pancreatic cysts: a randomized, double-blind study. *Gastrointest Endosc* 2009; **70**: 710-723 [PMID: 19577745 DOI: 10.1016/j.gie.2009.03.1173]
- 36 **Vazquez-Sequeiros E**, Maluf-Filho F. Endosonography-guided ablation of pancreatic cystic tumors: Is it justified? *Gastrointest Endosc* 2016; **83**: 921-923 [PMID: 27102528 DOI: 10.1016/j.gie.2015.10.032]
- 37 **Attila T**, Adsay V, Faigel DO. The efficacy and safety of endoscopic ultrasound-guided ablation of pancreatic cysts with alcohol and paclitaxel: a systematic review. *Eur J Gastroenterol Hepatol* 2019; **31**: 1-9 [PMID: 30394944 DOI: 10.1097/MEG.0000000000001297]
- 38 **Oh HC**, Seo DW, Kim SC. Portal vein thrombosis after EUS-guided pancreatic cyst ablation. *Dig Dis Sci* 2012; **57**: 1965-1967 [PMID: 22410850 DOI: 10.1007/s10620-012-2103-x]
- 39 **Chun JW**, Lee SH, Choi JH, Paik WH, Ryu JK, Kim YT. Duodenal Stricture due to Necrotizing Pancreatitis following Endoscopic Ultrasound-Guided Ethanol Ablation of a Pancreatic Cyst: A Case Report. *Clin Endosc* 2019; **52**: 510-515 [PMID: 31269788 DOI: 10.5946/ce.2018.191]



Published by Baishideng Publishing Group Inc
7041 Koll Center Parkway, Suite 160, Pleasanton, CA 94566, USA
Telephone: +1-925-3991568
E-mail: bpgoffice@wjgnet.com
Help Desk: <http://www.f6publishing.com/helpdesk>
<http://www.wjgnet.com>

