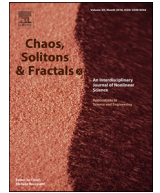




Since January 2020 Elsevier has created a COVID-19 resource centre with free information in English and Mandarin on the novel coronavirus COVID-19. The COVID-19 resource centre is hosted on Elsevier Connect, the company's public news and information website.

Elsevier hereby grants permission to make all its COVID-19-related research that is available on the COVID-19 resource centre - including this research content - immediately available in PubMed Central and other publicly funded repositories, such as the WHO COVID database with rights for unrestricted research re-use and analyses in any form or by any means with acknowledgement of the original source. These permissions are granted for free by Elsevier for as long as the COVID-19 resource centre remains active.



COVID-ABS: An agent-based model of COVID-19 epidemic to simulate health and economic effects of social distancing interventions

Petrônio C.L. Silva^{a,b,c,*}, Paulo V.C. Batista^{a,b}, Hélder S. Lima^b, Marcos A. Alves^{c,e}, Frederico G. Guimarães^{c,d}, Rodrigo C.P. Silva^{c,f}

^a Grupo de Pesquisa em Ciência de Dados e Inteligência Computacional - (ciðic), Brazil

^b Instituto Federal do Norte de Minas Gerais (IFNMG), Brazil

^c Machine Intelligence and Data Science (MINDS) Laboratory, Federal University of Minas Gerais, Brazil

^d Department of Electrical Engineering, Universidade Federal de Minas Gerais (UFMG), Brazil

^e Graduate Program in Electrical Engineering, Universidade Federal de Minas Gerais, Av. Antônio Carlos 6627, Belo Horizonte, 31270-901, MG, Brazil

^f Department of Computer Science, Universidade Federal de Ouro Preto (UFOP), Brazil

ARTICLE INFO

Article history:

Received 9 June 2020

Revised 26 June 2020

Accepted 2 July 2020

Available online 7 July 2020

Keywords:

COVID-19

Agent-based simulation

Epidemic models

SEIR

ABSTRACT

The COVID-19 pandemic due to the SARS-CoV-2 coronavirus has directly impacted the public health and economy worldwide. To overcome this problem, countries have adopted different policies and non-pharmaceutical interventions for controlling the spread of the virus. This paper proposes the COVID-ABS, a new SEIR (Susceptible-Exposed-Infected-Recovered) agent-based model that aims to simulate the pandemic dynamics using a society of agents emulating people, business and government. Seven different scenarios of social distancing interventions were analyzed, with varying epidemiological and economic effects: (1) do nothing, (2) lockdown, (3) conditional lockdown, (4) vertical isolation, (5) partial isolation, (6) use of face masks, and (7) use of face masks together with 50% of adhesion to social isolation. In the impossibility of implementing scenarios with lockdown, which present the lowest number of deaths and highest impact on the economy, scenarios combining the use of face masks and partial isolation can be the more realistic for implementation in terms of social cooperation. The COVID-ABS model was implemented in Python programming language, with source code publicly available. The model can be easily extended to other societies by changing the input parameters, as well as allowing the creation of a multitude of other scenarios. Therefore, it is a useful tool to assist politicians and health authorities to plan their actions against the COVID-19 epidemic.

© 2020 Elsevier Ltd. All rights reserved.

1. Introduction

The Coronavirus disease 2019 (COVID-19) pandemic is an ongoing outbreak, caused by severe acute respiratory syndrome coronavirus 2 (so-called SARS-CoV-2). The outbreak was identified in Wuhan, China, in December 2019 [1]. The World Health Organization (WHO) declared the outbreak a Public Health Emergency of International Concern on January 30th 2020, and a pandemic on March 11th. In Brazil, the first confirmed case was on February 25th 2020, when a man from São Paulo tested positive for the virus. Since then, Brazil has been severely affected. As of June 26th 2020, the country reached more than 1,220,000 confirmed cases

and more than 55,000 deaths by COVID-19, according to official data by the Brazilian Ministry of Health.

In addition to the public health crisis, the coronavirus has impacted all aspects of life, politics, education, economy, social, environment and climate. It is also having an unprecedented impact on global supply chains and production. The only known effective course of action to fight the disease outbreak is to implement highly restrictive social distancing measures on the population, as reported by a number of studies and systematic reviews [2–4]. Many countries are implementing such interventions with different degrees of success.

Given the complexity of the societies, it is hard to predict the implications of such actions in the short and medium terms [5]. Therefore, modeling and simulating the COVID-19 epidemic is a relevant and helpful way to understand the spread of the disease and the epidemiological effects of social distancing interventions. For this purpose, many studies in the literature have developed or adapted equation-based models to simulate the COVID-19

* Corresponding author at: Grupo de Pesquisa em Ciência de Dados e Inteligência Computacional - (ciðic), Brazil.

E-mail address: petronio.candido@ifnmg.edu.br (P.C.L. Silva).

epidemic, using the Susceptible-Infected-Recovered (SIR) model or the Susceptible-Exposed-Infected-Recovered (SEIR) model to characterize the dynamics, see references in Section 2. Nonetheless, agent-based models have also been proposed for this goal, see for instance [6,7] and other studies discussed with more detail in Section 2.

In this paper, we develop an Agent-based Model (ABM) to simulate the dynamics of the COVID-19 epidemic and the epidemiological and economic effects of social distancing interventions. The proposed ABM aims to emulate a closed society living on a shared environment, consisting of agents that represent people, houses, businesses, the government and the healthcare system, each one with specific attributes and behaviors.

A society living over a territory is a complex and dynamic system. Such systems have many interacting variables, present nonlinear behavior and their properties evolve over time. Their behavior is generally stochastic and may depend on the initial conditions. It can be affected by neighbor societies (with different policies and dynamics) and it can show emergence of complex behaviors and patterns. Agent-Based Simulations (ABS) are a good choice to simulate such systems, due to their simplicity of implementation and accurate results when compared with real data [8]. The main goal of ABS is to simulate the temporal evolution of the system, storing statistics derived from the internal states of the agents in each iteration and the global behaviors that emerge due to the interactions between the agents over the iterations. This approach allows the simulation of systems with intricate nonlinear relationships, complex conditions and restrictions that may be hard to describe mathematically. Since in this paper we are interested in simulating the effects of different social-distancing interventions and other control measures that affect the behaviors of agents and groups of agents, it is much easier to simulate these scenarios with an agent-based model. The epidemiological and economic effects are observed as emerging from the interactions of the agents in the simulation.

The ABM proposed here not only simulates the epidemic dynamics but also models the economy in this society of agents, which can help us estimate the economic impact under different types of interventions. The model (described in Section 3) allows the design of scenarios that correspond to different types of interventions performed in the society, by changing the simulation environmental variables and measuring their effects. Therefore, the proposed ABM becomes a useful tool to assist politicians and health authorities in planning their actions against the COVID-19 epidemic. The model was implemented in Python version 3.6 programming language and encapsulated in the COVID_ABS package, whose source code is available at https://bit.ly/COVID19_ABSsystem. The source code of all the experiments reported herein is available at https://bit.ly/covid_abs_experiments.

The main contributions and findings are listed below:

- A new SEIR agent-based model to simulate the COVID-19 epidemic using a society of agents.
- Assessment of the economic effects of seven different scenarios with specific social-distancing interventions, via simulation of COVID-ABS: (1) do nothing, (2) lockdown, (3) conditional lockdown, (4) vertical isolation, (5) partial isolation, (6) use of face masks, and (7) use of face masks together with 50% of adhesion to social isolation. These scenarios and their simulated results are described in Section 5.
- The simulations support the notion that lockdown and conditional lockdown are the best scenarios in terms of controlling the number of infected and deaths, which is primary goal. Economical countermeasures and subsidies are required by the government since this scenario presents the worst economic losses to the industry with potential unemployment, and recession

can be observed during the lockdown period. Also, to be effective, these scenarios depend on the ability of the government to enforce the social isolation.

- Our simulations present additional evidence that the so-called vertical isolation simply does not work, although it is the policy advocated by some governments like the Brazilian one.¹
- The scenario combining the use of masks and partial isolation of the population could be a good compromise and it is more realistic for implementation in terms of social cooperation. The infection curve is flattened and the economy has smoother effects than the scenarios with lockdown.

The rest of the paper is organized as follows: Section 2 provides a brief review of related work with focus on the mathematical modeling for epidemics and some recent papers related to the SARS-CoV-2. Section 3 details the proposed agent-based system modeling. Section 4 describes the experimental methodology and Section 5 shows the simulations results and some discussions related to the pandemic. Section 6 concludes the paper and gives future directions.

2. Related work

Since WHO announced the Coronavirus Disease 2019, the scientific community has been working hard to investigate SARS-CoV-2 epidemiological dynamics. Some works used the SIR model to characterize the COVID-19 dynamics [9–12]. However, more precise simulations usually used an approach based on the SEIR model [13–30]; given that this disease has a known incubation period [31]. Some authors added new states to refine the model, for instance, super-spreaders [32] or isolated [13,14,16,18–20,23,24,26,27], hospitalized [13,14,19,20,23,27], and asymptomatic infected [18,20,21,23,28].

We note that equation-based models to simulate the epidemic represent the majority among those proposed in the literature. Nonetheless, some papers with agent-based models have also been proposed for it. For a discussion about ABM and its advantages over equation-based models, we refer the reader to [8,33]. In the report released by Ferguson et al. [6], an individual-based simulation model was used to explore scenarios for COVID-19 in GB and USA and the impact of non-pharmaceutical interventions on the healthcare demand. Bossert et al. [7] developed an agent-based model combining socio-economic and traffic data to analyze COVID-19 spreading in a South Africa city under social isolation scenarios. The prediction suggests that lockdown strategy is useful to mitigate the disease. Another study using an ABM also analyzed several scenarios and highlighted that with 90% of the population in isolation, it is possible to control the disease within 13 weeks when joined with effective case isolation and international travel restrictions, considering the Australian context [34]. An appealing characteristic of agent-based modeling is the easiness to simulate different scenarios. For instance, the scenario that considers universal use of masks integrated with social distance is the recommended one to control the pandemic according to Braun et al. [35] and Kai et al. [36]. Given the flexibility of the agent-based approach, previous works have employed this method to simulate specific topics in the COVID-19 context, such as testing policies [37], strategies for reopening public buildings [38], hypothetical effective treatments [39], and a spatio-temporal strategy for vaccination [40].

Few works in the literature used agent-based models to simulate the economic impacts of the COVID-19. For instance, Inoue and Todo [41] quantified that a possible one month lockdown in

¹ <https://agenciabrasil.ebc.com.br/en/politica/noticia/2020-04/bolsonaro-brazil-must-not-be-informed-through-panic>.

Table 1
Types of agents and their attributes and actions.

A1: Person	
Description	A1 is the main type of agent. Its dynamic position varies according to the environment and may be associated with A2, or not (homeless) and A3, or not (unemployed).
Attributes	Position (dynamic), Age, House (A2), Employer (A3), Epidemiological status, Infection status, Wealth, Income and Social Stratum
Actions	Walk freely (daily), Go home (daily), Go to work (daily), Personal contact (hourly), Business contact (hourly), Go to the hospital
A2: Houses	
Description	A2 represent the families. They share a house and financial bills.
Attributes	Position (static), Social stratum, Housemates (group of A1), Wealth, Incomes and Expenses
Actions	Homemate check-in (daily), Accounting (monthly)
A3: Business	
Description	A3 are the economical agents, e.g. industries, shops or markets. It interacts with A1 by paying a salary or selling a product.
Attributes	Position (static), Social stratum, Employees (group of A1), Wealth, Incomes and Expenses
Actions	Accounting (monthly), Business contact (hourly)
A4: Government	
Description	A4 is a singleton agent that receives taxes from A2 and A3, provide funds to A5 and insurance for homeless and unemployed A1.
Attributes	Position (static), Wealth
Actions	Accounting (monthly)
A5: Healthcare System	
Description	A5 is also a singleton, which represents the health system that ideally should be able to serve the entire population.
Attributes	Position (static), Wealth

Tokyo would lead to a total production loss of 5.3% in Japanese annual gross domestic product (GDP). Dignum et al. [42] proposed a tool to analyze the health, social, and economic impacts of the pandemic when the government implements a number of interventions, such as closing schools, requiring that employees work at home, and providing subsidy for the population.

In this work, we use a SEIR agent-based model to simulate the health and economic impacts of the COVID-19 epidemic. We perform analysis to seven possible scenarios: (1) do nothing, (2) lockdown, (3) conditional lockdown, (4) vertical isolation, (5) partial isolation, (6) use of face masks, and (7) use of face masks together with 50% of social isolation. We use data from Brazil for all scenarios considered but the proposed agent-based model is fully parameterized and can be easily transferred to other contexts given that corresponding data is provided.

3. COVID-ABS: Proposed agent-based system modeling

The proposed agent-based approach aims to emulate a closed society living on a shared finite environment, composed of humans, which are organized in families, business and government, which interact with each other. This characterization is trying to cover the main elements of the society. The agents, their attributes and possible actions are described in Table 1.

The model is an iterative procedure, with T representing the number of iterations. The model takes an input parameter set P , listed in Table 2, and produces a response Y_t (observable variables), related to epidemiological or economic effects of the pandemic. Its internal state Θ_t ($t = 1 \dots T$) consists of the union of the internal states of the agents θ_t^i , where $i = 1 \dots n$ and n is the number of agents, such that $\Theta_t = \bigcup_{i=1}^n \theta_t^i$.

The model is described in Algorithm 1. The initialization of internal states in line 1, discussed in Section 3.2, creates the agents. The simulation dynamics starts in line 2, discussed in Section 3.3, and depends on the type of the agent, the parameter P and the current iteration t (discrete time). As mentioned before, each type of agent has its own set of actions in different time frames (hourly, daily, weekly or monthly).

At each iteration, it checks if there was contact between any pair of agents. A contact happens when the distance between any two agents is less than or equal to a threshold δ defined in P . The

Algorithm 1 General procedure of the proposed agent-based approach.

Require: P the parameter set, T the number of iterations

```

 $\Theta_0 \leftarrow \text{initialize}(P)$ 
for  $t \leftarrow 1$  to  $T$  do
  for all agent  $a_i \in \Theta_t$  do
     $\theta_t^i \leftarrow a_i.\text{execute\_actions}(t, P, \Theta_t)$ 
    if type of  $a_i = A1$  then
      for all agent  $a_j \in \Theta_t | i \neq j$  do
        if distance( $a_i, a_j$ )  $\leq \delta$  then
           $a_i.\text{contact}(a_j)$ 
        end if
      end for
    end if
  end for
 $Y_t \leftarrow \text{summarize}(\Theta_t)$ 
 $\Theta_{t+1} \leftarrow \bigcup_{i=1}^n \theta_t^i$ 
end for

```

contact can be epidemiological (if the agents are of type A1) or economical (A1 and A3). The computation of the distance between each pair of agents per iteration makes the asymptotic complexity of the method equal to $O(n^2)$, where n is the number of agents.

3.1. Parameter estimation

Some parameters in Table 2 were empirically estimated, in a way that the epidemiological response variables present in Table 3 correspond to those produced by a SEIR model. For that purpose the Epidemic Calculator² was employed – this is an open-source SEIR implementation and visual tool for epidemic simulations. The initial percentage of infected (β_9) and immune (β_{10}) agents were chosen in order to represent the complete epidemic dynamics.

The population size parameter, α_3 , is particularly concerning because it affects the execution time of the simulation. On the other hand, the Population density, defined as $\alpha_3/(\alpha_1\alpha_2)$, follows

² <https://gabgoh.github.io/COVID/>

Table 2
Definitions of the parameters of the proposed ABS model.

Variable	Domain/ Unit	Current value	References and Observations
Social and Demographic			
α_1 - Height	\mathbb{N}^+	500	Defined empirically. Each unit corresponds to 7 m.
α_2 - Width	\mathbb{N}^+	500	Defined empirically. Each unit corresponds to 7 m.
α_3 - Population size	\mathbb{N}^+ /people	300	Defined empirically.
α_4 - Age	[0, 100]	$\beta(2, 4)$	[43]
α_5 - Average family size	\mathbb{N}^+ /people	3	[44]
α_6 - Mobility	\mathbb{N}^+	10	Defined empirically. Each unit corresponds to 7 m.
α_7 - Homeless rate	[0, 1]	0.0005	[45]
Epidemiological			
β_1 - Contagion distance	\mathbb{R}^+	1	[46]
β_2 - Contagion probability	[0, 1]	0.9	[46]
β_3 - Incubation time	\mathbb{N}^+ /days	5 – 6	[47,48]
β_4 - Transmission time	\mathbb{N}^+ /days	8 – 10	[49]
β_5 - Recovering time	\mathbb{N}^+ /days	20	[50]
β_6 - Hospitalization rate per age	[0, 1]	Table 6	[46]
β_7 - Severe cases rate per age	[0, 1]	Table 6	[46]
β_8 - Death rate per age	[0, 1]	Table 6	[46]
β_9 - % initial infected	[0, 1]	0.01	Defined by the authors.
β_{10} - % initial immune	[0, 1]	0.01	Defined by the authors.
β_{11} - Critical limit of the Health System	[0, 1]	0.05	The proportion of ICU beds to the population
Economical			
γ_1 - Income distribution		Table 4	[51,52]
γ_2 - Proportion of businesses	\mathbb{R}^+	0,01875	Considering the number of businesses per 100k inhabitants [53]
γ_3 - Total GDP	\mathbb{R}^+ /R\$	1.000.000,00	Defined by the authors.
γ_4 - Public GPD rate	[0, 1]	0.01	Defined by the authors.
γ_5 - Business GPD rate	[0, 1]	0.05	Defined by the authors.
γ_6 - Personal GPD	[0, 1]	0.04	$\gamma_6 = 1 - \%A4 - \%A3$
γ_7 - Minimum income	\mathbb{R}^+ /R\$	900,00	
γ_8 - Minimum expenses	\mathbb{R}^+ /R\$	600,00	
γ_9 - Unemployment rate	[0, 1]	0.12	[54]
γ_{10} - Proportion of informal businesses	[0, 1]	0.40	Informal economy [54,55]
γ_{11} - EAP age group			$16 < \text{EAP} < 65$

Table 3
Response variables.

Variable	Description
Epidemiological	
S_t	Percentage of Susceptible agents in population
I_t	Percentage of Infected agents in population
I_t^A	Percentage of Infected Asymptomatic agents in population
I_t^H	Percentage of Infected Hospitalized agents in population
I_t^S	Percentage of Infected Severe agents in population
R_t	Percentage of Recovered and Immune agents in population
D_t	Percentage of Dead agents in population
Economical	
$W_{S,t}^{A1}$	Percentage of Gross Domestic Product owned by the people (A1 agents) at time t under scenario S
$W_{S,t}^{A3}$	Percentage of Gross Domestic Product owned by businesses (A3 agents) at time t under scenario S
$W_{S,t}^{A4}$	Percentage of Gross Domestic Product owned by government (A4 agent) at time t under scenario S

the population density of the area under study which is 24 people per km^2 . The mobility parameter α_6 was empirically estimated as the average range that a person walks randomly in his free time.

The Total GDP, parameter γ_3 , and the percentage rates by kind of agent (γ_4 , γ_5 and γ_6) are abstractions of closed local economy. The minimum income γ_7 represents the minimum net salary, the nominal income after taxes, and the minimum expense γ_8 represents the approximate market value of a basic needs grocery pack.

3.2. Initialization

The simulation is performed in a squared bi-dimensional environment shared by all types of agents. A_i agents, $i \in \{2, 3, 4, 5\}$,

are randomly initialized inside this environment given by Eq. (1).

$$A_{i_{pos}} = \begin{cases} x \sim \mathcal{U}(0, \alpha_1) \\ y \sim \mathcal{U}(0, \alpha_2) \end{cases} \quad (1)$$

where $\mathcal{U}(a, b)$ is a sample from a uniform distribution in the interval $[a, b)$.

Agents A_1 are initialized in their A_2 location, following Eq. (2), where σ_k is the variability of the position inside the house. For homeless agents, Eq. (1) is used.

$$A_{1_{pos}} = A_{2_{pos}} + \mathcal{N}(0, \sigma_k) \quad (2)$$

where $\mathcal{N}(\mu, \sigma)$ is a sample from a normal distribution with mean μ and standard deviation σ .

The number of A_1 agents is controlled by the variable population size, that is $|A_1| = \alpha_3$. The number of houses (A_2 agents) is

Table 4
Income distribution (γ_1). Adapted from World Bank [52].

Quintile	Social Stratum	% of GDP Share	Cummulative % of GDP Share
Q1	Most Poor	3.62	3.62
Q2	Poor	7.88	11.50
Q3	Working Class	12.62	24.17
Q4	Rich	19.71	43.88
Q5	Most Rich	56.12	100.00

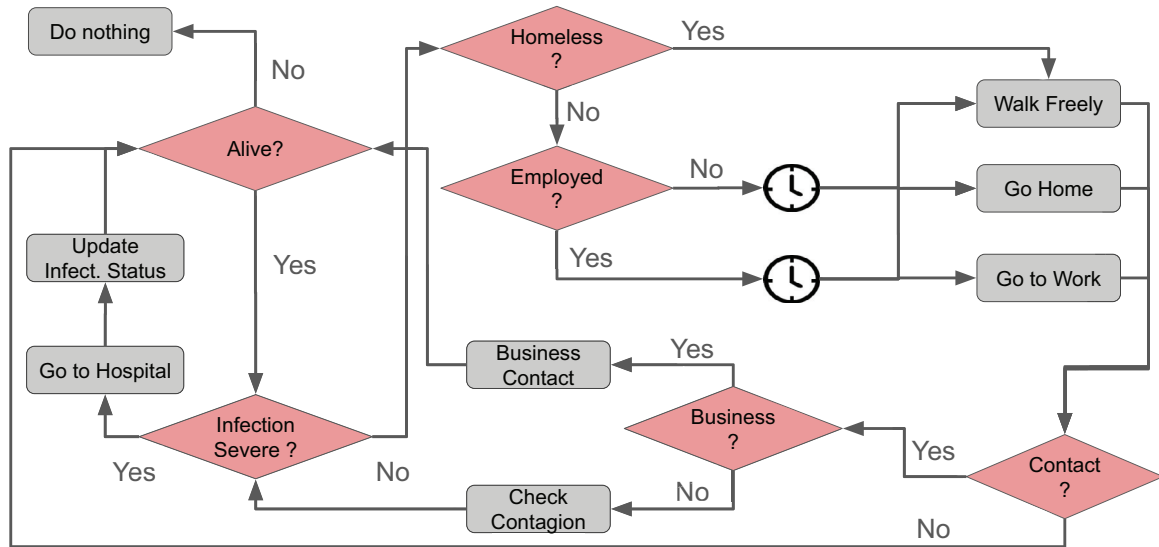


Fig. 1. A1 agent activity cycle.

calculated using Eq. (3) considering the average family size α_5 :

$$|A2| = \left\lceil \frac{\alpha_3}{\alpha_5} \right\rceil \quad (3)$$

The number of A3 agents is calculated according to Eq. (4), considering the population size α_3 , the proportion of formal and informal businesses, γ_2 and γ_{10} , respectively.

$$|A3| = \lceil \alpha_3 \gamma_2 + \alpha_3 \gamma_{10} \rceil \quad (4)$$

When a person, A1 type, is created, it is assigned to a randomly chosen house, type A2, or it is considered homeless according to the Homeless Rate, α_7 . Parameter γ_9 defines the probability of an A1 to be unemployed. If a person is employed and belongs to Economical Active Population (EAP) (controlled by γ_{11}) an employer is randomly chosen among the available A3s. A single instance of A4 and A5 agents are created.

The age distribution of A1 agents is given by α_4 parameter, such as $A1_{age} \sim \beta(2, 5)$ as explained in [56], where $\beta(a, b)$ is the beta distribution with shape parameters a, b .

The social stratum of A1, A2 and A3 is represented by the income distribution γ_1 , listed in the Table 4, meaning the slice of the wealth represented by the GDP parameter γ_3 . The social stratum of agents is sampled such that $Ai_{stratum} \sim U(1, 5)$, for $i = \{1, 2, 3\}$. The total wealth of the simulation, represented by γ_3 , is shared among agents, according to public, business and personal percentages defined by γ_4, γ_5 and γ_6 .

After the creation of all agents the simulation model starts its iteration loop, which represents the time dynamics, explained in the next section.

3.3. Simulation dynamics

Each iteration represents one hour when the agents are invoked to perform actions that depend on their type and behaviors, as

shown in Fig. 1 for A1 agents, and more detailed in Section 3.3.1. During its movement, an A1 agent may get in the proximity with other A1, A2 or A3 agents. Section 3.3.2 presents the possibility of contagion that can happen through contact between two A1 agents. Finally, Section 3.3.3 presents the economic relationships between agents, caused by contact of A1 and A3 agents (commercial transactions), payment of taxes for the government (A4 agent), labor relationships between A3 and A1 agents and house expenses between A2 and A1 agents.

3.3.1. A1 Mobility patterns

The distribution of A1 agents' work, rest and leisure hours is shown in Table 5 and it is based on the Universal Declaration of Human Rights [57]. Basically, it is the standard deviation of a Gaussian distribution with average $\mu = 0$, representing the variability of the movement amplitude of A1 in its free time or, in other words, how far the agent can walk from its actual position.

The actions "Go home", "Go to work" and "Walk freely" occur according to the Eqs. (5), (6) and (7). Besides these ordinary actions, all the agents that are infected and have infection severity equal to hospitalization or severe execute the "Go to hospital" action, according to the Equation (8). All the dead agents have their positions set to zero.

$$A1_{pos} = A2_{pos} + \mathcal{N}(0, \sigma_k) \quad (5)$$

$$A1_{pos} = A3_{pos} + \mathcal{N}(0, \sigma_k) \quad (6)$$

$$A1_{pos} = A1_{pos} + \mathcal{N}(0, \alpha_6) \quad (7)$$

$$A1_{pos} = A5_{pos} + \mathcal{N}(0, \sigma_k) \quad (8)$$

where $\sigma_k = 0.01$ is the random noise variance for "Go to..." actions, and the mobility parameter α_6 is the random noise variance

Table 5
A1 agent movement routines considering a full day and different activities.

Start Time	End Time	Activity	Action
0	8	Rest	If A1 is not homeless: Go home (Eq. (5)) Otherwise: Walk freely (Eq. (7))
8	12	Job	If A1 is not unemployed: Go to work (Eq. (6)) Otherwise: Walk freely (Eq. (7))
12	14	Lunch	Walk Freely (Eq. (7))
14	18	Job	If A1 is not unemployed: Go to work (Eq. (6)) Otherwise: Walk freely (Eq. (7))
18	0	Recreation	Walk freely (Eq. (7))

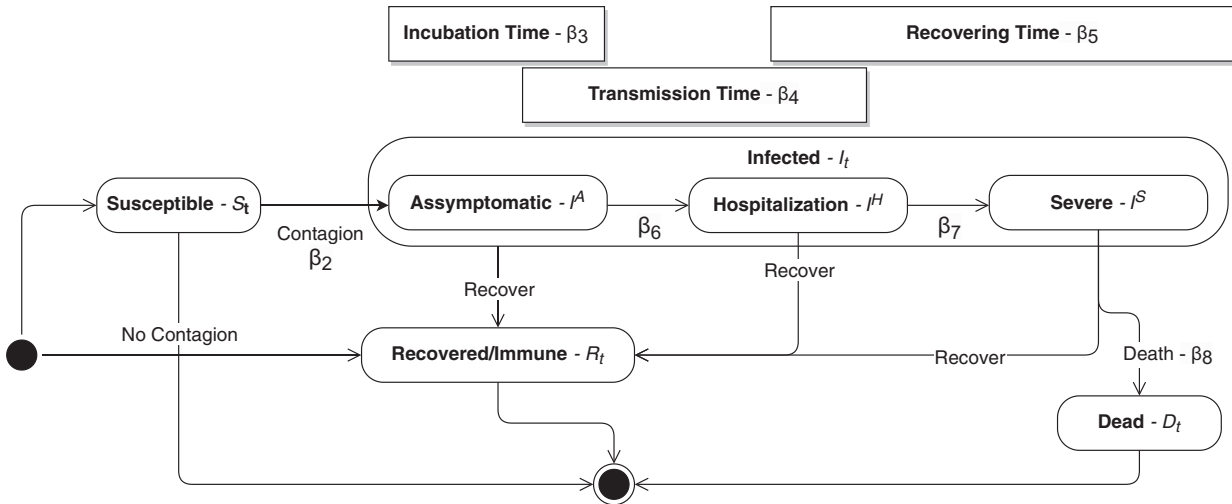


Fig. 2. Epidemiological and infection state diagram for A1 agents based in SEIR model, with the corresponding population response variables and parameters of their transition probabilities.

for “Walk freely” action, representing the amplitude of movement the A1 agents have in their free time.

3.3.2. Contagion spreading

COVID-19 is a highly contagious disease. According to the Report 3 of the Imperial College London “on average, each case infected 2.6 (uncertainty range: 1.5–3.5) other people up to 18th January 2020” [58]. Following the SEIR model, in each simulation, there is an initial percentage of infected and immune people (β_9 and β_{10} , respectively), and the remaining population consists of susceptible individuals. There is also a Dead status, since part of the population dies due to the disease and its complications [59].

The possibility of contagion happens by the interaction of the agents by proximity or contact. Hence, the higher the mobility of a person, the greater the probability that he/she approaches an infected person and gets infected. Each simulation considers a contagion distance threshold β_1 , which is the minimal distance that two agents have to be to occur the viral transmission, and a probability of contagion β_2 in case of contact.

The model of the medical condition evolution of the infected agents follows [60,61]. Once an agent is infected, it can be in one of these sub-states: a) asymptomatic, which includes mild symptoms without hospitalization, b) hospitalization and c) severe, used in cases of hospitalization in intensive care unit (ICU). These states and their transitions are illustrated in Fig. 2.

Table 6
Rates of medical conditions considering hospitalized (β_6) and severe (β_7) and death (β_8) cases grouped by age. Adapted from Ferguson et al. [6].

Age-group (years)	β_6 - % symptomatic cases requiring hospitalization	β_7 - % hospitalised cases requiring critical care	β_8 - Infection Fatality Ratio
0 - 9	0.100	5.000	0.002
10 - 19	0.300	5.000	0.006
20 - 29	1.200	5.000	0.030
30 - 39	3.200	5.000	0.080
40 - 49	4.900	6.300	0.150
50 - 59	10.200	12.200	0.600
60 - 69	16.600	27.400	2.200
70 - 79	24.300	43.200	5.100
80+	27.300	70.900	9.300

The evolution of the medical condition is stochastic and follows the probabilities summarized in Table 6, represented by the parameters β_6 , β_7 and β_8 , respectively. The hospitalization cases require medical infrastructure, which is limited. It varies from country to country, but is always less than the total population. In each simulation, a critical limit β_{11} is considered, it represents the percentage of the population that the healthcare system is capable to handle simultaneously. As a consequence, if the number of hospitalizations and severe cases increase above this limit, there are no beds in hospitals to manage the demand.

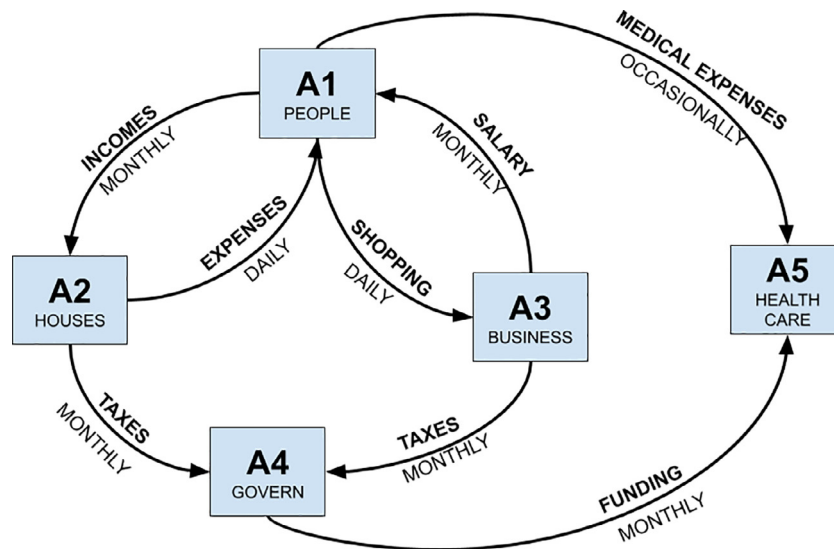


Fig. 3. Economic relationships between agents.

3.3.3. Economic transactions

The secondary goal of this study is to simulate the impact caused in the economy by the different types of mobility restrictions [62–65] imposed by the authorities.

Fig. 3 shows the transactions by which agents exchange wealth in the simulation. The economic dynamics follows seasonal routines that also depend on the type of the agent.

The “business contact” action happens hourly, when an A1 agent in its free time gets in contact with an A3, and occurs the transference of wealth from A1 to A3. These economic transactions are the most sensitive to the A1 agents mobility (the more the agents move, the more they spend) and affects the A3 agent income. In pandemic times, that can happen in almost all scenarios, since the population tends to leave their houses just to buy essential items or to solve a problem which could not have been solved over the Internet. The values exchanged in “business contact” depend on the social stratum of the A1 agents, and the higher the quintile the higher the spending following the wealth distribution γ_1 . In each day, the wealth of A2 and A3 agents is decreased by its minimal fixed expenses, proportional to the sum of the expenses of housemates and employees, respectively.

The “accounting” actions happen monthly for A2, A3 and A4 agents. Accounting is the payment of taxes from A2 and A3 agents to A4, and it represents the major income of A4. During accounting, A3 agents also pay salaries to their A1 employees determined in the initialization by the social stratum. Finally, A2 agents transfer money to a random A3 agent, representing supplier payments.

The accounting of the government agent, A4, transfers funds to A5 agent, equivalent to its fixed expenses and the daily expenses of the hospitalized agents. Eventually, the A4 agent pays aids for unemployed and homeless A1 agents.

Considering the periodicity of the economic transactions, it is necessary to execute at least one complete cycle (720 iterations) in order to execute all economic transactions at least once.

3.4. Discussion

The proposed model tries to apprehend the complexity of the social, epidemiological and economical relationships, but without being simplistic. Then, the complexity of the model reflects the complexity of the system being modelled although on a smaller scale.

Previous versions of the model did not consider social constraints and routines and, despite the good performance of the epidemiological response variables, it could not accurately represent the economic dynamics. The introduction of social constructs, as families and businesses, and periodical routines, such as working hours, free time and bed time, brought more feasibility to the simulation and improved the performance of the economic response variables when compared with the real world values.

These social constructs and periodic routines are hard-coded, although they can be adapted by users. Major flexibility is provided by the parameter set that can be adjusted to represent from a single community to a complete country.

In the next section, the experimental methodology is discussed, as well as the performance metrics and their evaluation.

4. Experimental methodology

To evaluate the proposed approach, seven different scenarios that reflect adopted and/or hypothetical social distancing interventions have been formulated. The proposed ABS model was implemented in Python version 3.6 programming language and encapsulated in the COVID_ABS package, whose source code is available at https://bit.ly/covid_abs_experiments and https://bit.ly/COVID19_ABSsystem.

Each scenario simulates the impact of a given social distancing policy, considering the values of the parameters in Table 2, on the response variables, summarized in Table 3. For each scenario 35 executions were performed, each one with $T = 1,440$ iterations. Since each iteration corresponds to one hour, each execution covers exactly 2 months and one complete accounting cycle for houses, government and business, with one salary and tax payment, which occur in the 30th day of the month. The monthly “accounting” event is important for A2, A3 and A4 agents due to its severe cash impact and wealth transfers among agents.

The main goal of social interventions is to minimize the death curve D_t . It is directly related to flattening the infection curve I_t , in order to keep the hospitalization I_t^H and severe I_t^S cases below the critical limit of the healthcare system β_{11} . Flattening the I_t curve means minimizing the infection peak I_p , defined in Eq. (9), and extending the time T_{Ip} spent to reach this peak, defined in Eq. (10).

$$I_p = \max \{ I_t \mid t = 1 \dots T \} \quad (9)$$

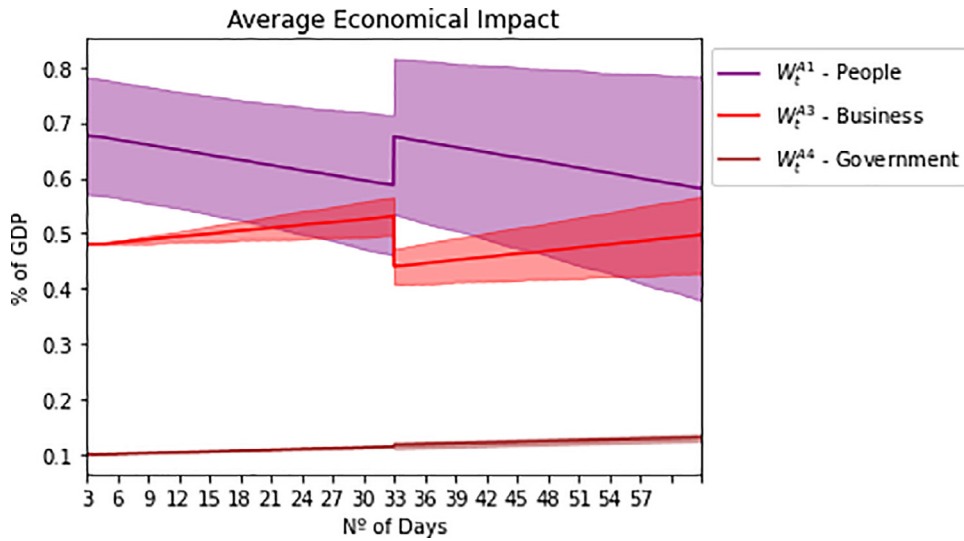


Fig. 4. Daily averaged response variables for B.

$$T_{IP} = \min\{t \mid I_t = I_p\} \quad (10)$$

To compare the scenarios, the response variables D_t , I_t will be considered, condensed in the metrics I_p and T_{IP} .

The economical analysis aims to assess the evolution of wealth, represented by the $W_{S,t}^i$ response variables. To allow the economic comparison among scenarios with respect to the same reference, a baseline scenario, B , without a pandemic was designed. It is meant to isolate the economic dynamic and can be used to assess the impacts of the different interventions in the economy.

For comparison among scenarios, the increase in wealth, ΔW_S^i , for the group of agents, $i \in \{A1, A3, A4\}$, in scenario S is computed as follows:

$$\Delta W_S^i = \frac{W_{S,T}^i - W_{B,T}^i}{W_{B,T}^i} \quad (11)$$

where $W_{B,T}^i$ is the wealth of the group of agents, i , at the final simulation time step, T , of B .

In the following section, the scenarios are defined, their simulation results are presented and compared, and the main findings discussed.

5. Results and analysis

This section shows the results for seven scenarios, chosen to represent the major interventions adopted or defended by governments. In this study, the parameters are based on data from Brazil. Nevertheless, in order to encourage further studies and/or applications, it is possible to easily transfer the model to other societies by changing the social, demographic and economical parameters listed in Table 2 and creating a multitude of other scenarios adapted to the new regions.

The meaning of each scenario, its parameters and dynamics of the response variables are discussed below.

5.1. Baseline (B): no coronavirus pandemic

This scenario simulates the economic behavior without a pandemic. It is used as baseline for comparison with all the other scenarios. To generate this scenario, set parameters to $\beta_9 \leftarrow 0$ and $\beta_{10} \leftarrow 1$.

Despite the economic result of this simulation, it is artificial data and consequently it does not represent the reality of any

country. Nonetheless, we argue that it is based on projections before the pandemic outbreak. See, for instance, the references regarding each parameter listed in Table 2.

The evolution of GDP is illustrated in Fig. 4. The GDP indicates a recession chart where the population (A1) and government (A4) are losing wealth and the businesses (A3) are floating at the equilibrium point (when the incomes and expenses are equal). Initially the A3 are profiting but, in the accounting day, the profits are settled by the labor and tax expenses. The baseline scenario is consistent with the economic predictions of stagnation in Brazil.

5.2. Scenario 1: do nothing

This scenario represents what could happen if politicians decided not to take any actions to avoid the increase of the number of people infected by the SARS-CoV-2 virus. Usually, this decision only targets the economic point of view. Fig. 5 shows the epidemiological and economical average curves of this scenario and their variances. It can be seen that the economic curves look closer to the ones of the baseline, confirming the economic motivation of keeping the environment without interventions.

However, when the contagion curve I_t is considered, it is possible to note how the Healthcare System critical limit β_{11} was trespassed, pushing the death curve D_t up. The high number of lost lives makes this the most catastrophic scenario, despite its economic resemblance with B .

5.3. Scenario 2: lockdown

This scenario represents the complete social isolation, following the WHO recommendations, during a well defined date range. In this scenario, all A1 agents are kept in their houses, and the “walk freely” and “go to work” routines are suppressed. Also $\alpha_6 \leftarrow 1$, reducing the mobility amplitude of all A1 even the homeless, as discussed in Section 3.3.1. The lockdown is unconditional, meaning that from $t = 0$ to T , all the restrictions are applied.

This scenario is highly conservative in healthcare terms, and the main goal is to save as many lives as possible by minimizing viral spreading. In the impossibility of effective testing, the entire population stays in lockdown for a predefined period of time. Broadly speaking, the infected agents only have contact with their housemates and the I_t (and especially I_t^d) stays below the healthcare critical limit β_{11} , and the deaths $D_t \leftarrow 0$, meaning that the health-

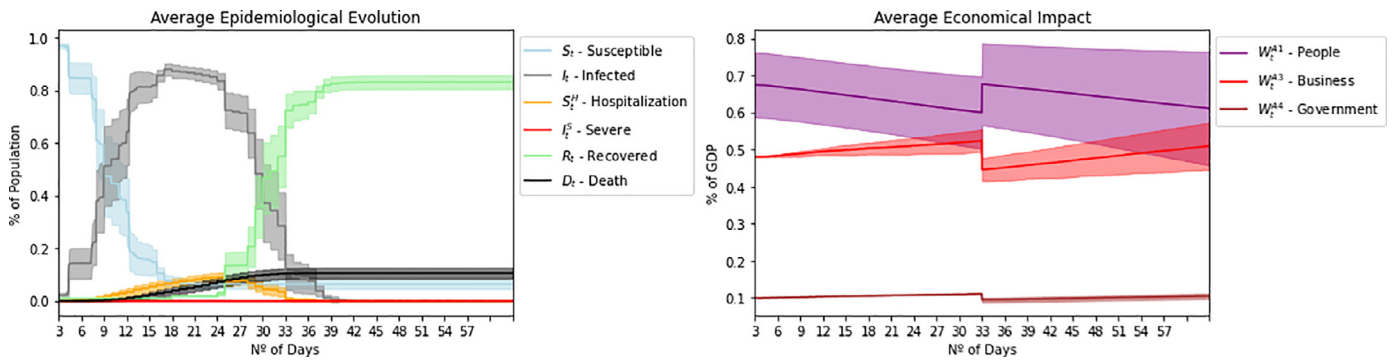


Fig. 5. Daily averaged response variables for scenario “Do Nothing”.

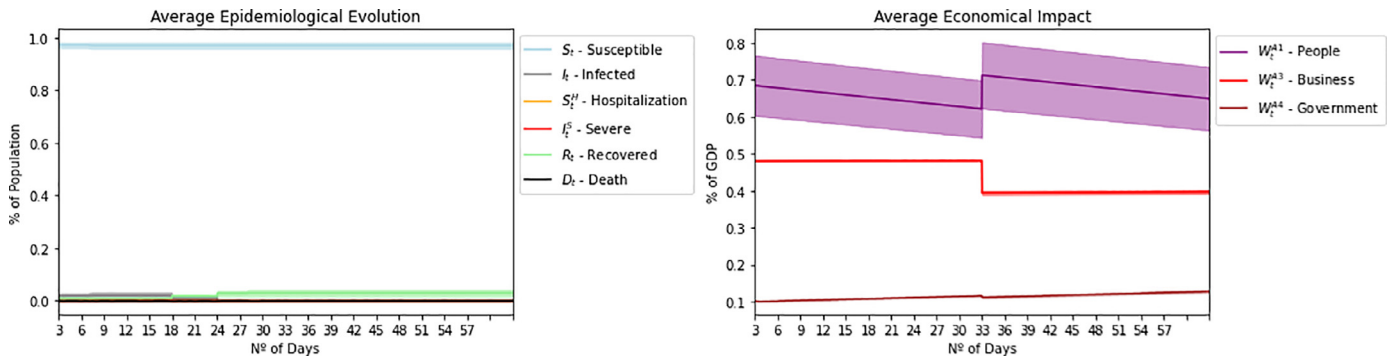


Fig. 6. Daily averaged response variables for Scenario 2.

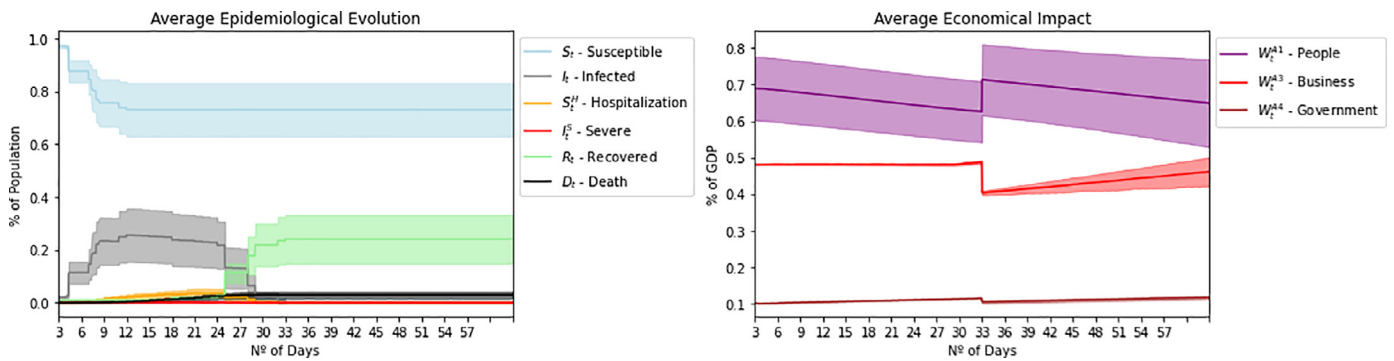


Fig. 7. Daily averaged response variables for Scenario 3.

care system could handle effectively all cases, using its available resources.³

Considering the economic point of view, see Fig. 6, this scenario is the worst for the industry because the A1 agents cannot generate wealth, but keep receiving their labor incomes.⁴ A3 does not have income, but keeps paying taxes to A4 and labor expenses to A1. In this scenario, after two months, the businesses lost 20% of its GDP share, see $W_{S,T}^{A3}$ in Fig. 6.

The key point for the success of lockdown policy is staying at home (voluntarily or under laws). Economical countermeasures to its harm can also be adopted by A4, as tax exemptions and universal income, in order to minimize the wealth losses. In the impossibility of implementing this scenario, another one that considers protective and distance measures should be evaluated.

5.4. Scenario 3: conditional lockdown

This scenario imposes the same restrictions on A1 mobility presented in scenario 2, but conditionally. In the system, when the infection curve grows above a certain threshold, $I_t \geq 0.05$, the lockdown restrictions are activated, being released when $I_t \leq 0.05$.

As we can see in Fig. 7, the viral spreading represented by the infection curve I_t is controlled, not allowing the explosion of D_t curve. Economically, recession can be observed during the lockdown period, $W_{3,t}^i$ lower than $W_{B,t}^i \forall i$, but as soon as the restrictions are released the business performance is recovered. $W_{3,t}^{A3}$ remains below $W_{B,t}^{A3}$ but above the complete lockdown curve $W_{2,t}^i$.

Less conservative than scenario 2 (and also less efficient in terms of D_t), this scenario was implemented in New Zealand [66], and it depends on an effective healthcare system that is capable of carrying out the necessary tests in the population, granting reliability in I_t estimates and, as in scenario 2, the governmental ability to enforce the social isolation.

³ Considering the given population size in the simulation.

⁴ In our simulation, people can not get fired, which means that the onus of keeping them at home is for the company. In practice this may generate unemployment.

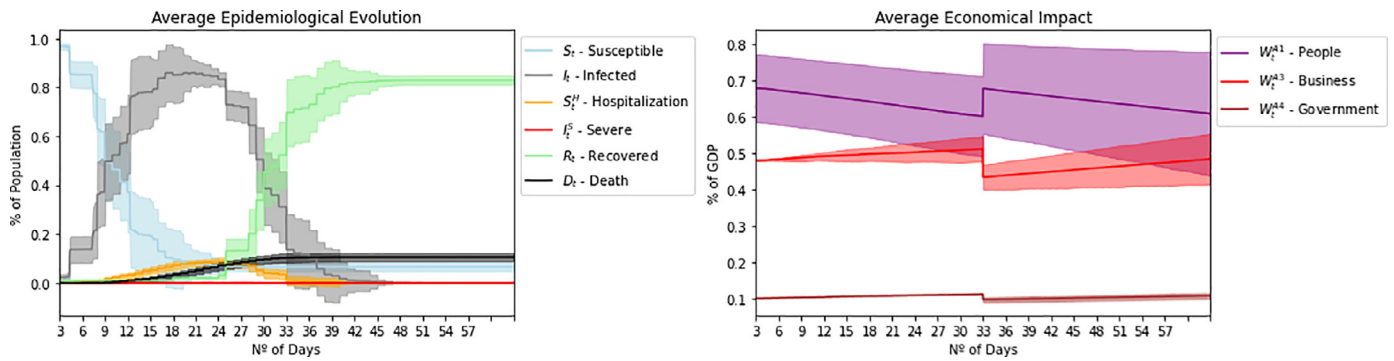


Fig. 8. Daily averaged response variables for Scenario 4.

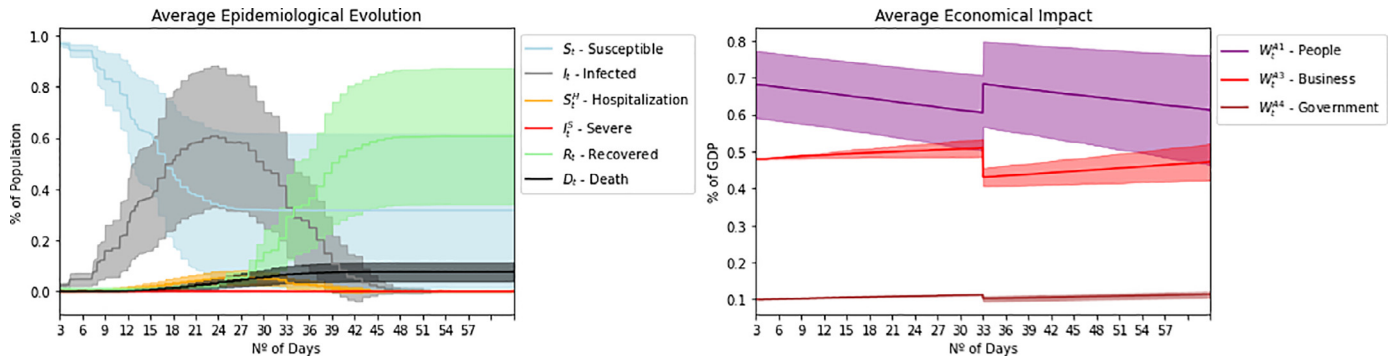


Fig. 9. Daily averaged response variables for Scenario 5.

5.5. Scenario 4: vertical isolation

Vertical isolation is the name given to the social intervention policy where the known infected people and the known risk groups – elderly and people with pre-existent diseases – are kept in social isolation, whereas young people and adults are allowed to work regularly. This policy has, for instance, been advocated by the Brazilian president.⁵

In terms of the proposed model, over 65, below 18 years old and symptomatic regardless of the age stay at home.

The assumption of this policy is that all the people outside the risk groups would not develop the severe cases of the disease. This assumption was proved to be fragile and this policy showed to be ineffective by Duczmal et al. [67]. The results shown in Fig. 8 are in accordance with the literature [67] and produced almost the same epidemiological and economical results of Scenario 1, i.e., the same results of doing nothing.

5.6. Scenario 5: partial isolation

In the scenarios with lockdown (2 and 3), the mobility of all agents must be restricted, requiring restrictive public policies enforced by the government. When these policies are non-existent or are not taken seriously by the entire population, partial isolation levels are reached. The partial isolation level $IL \in [0, 1]$ means the percentage of the population that is fulfilling the isolation, while the remaining $1 - IL$ is not.

Then, it is possible to define that in the lockdown $IL \geq 0.9$, considering that essential services and a few industries can not stop in order to avoid supply breakdown. On the other hand, the scenarios 0 and 1 have $IL \leq 0.1$, and the scenario 4 has $IL \approx 0.2$, because of the age distribution and the definition of risk groups.

This scenario aims to assess the effects of intermediate IL s. It was simulated by randomly choosing agents $A1$ with probability $IL \leftarrow 0.5$ to stay at home.

Observing the results in Fig. 9, although the I_t curve is flattened when compared with scenarios B and 4, it is still less efficient than scenarios 2 and 3. Notice the D_t still grows exponentially before reaching the peak. For the economic perspective, this scenario behaves similarly to the baseline. These metrics offer evidence that $IL \leftarrow 0.5$ is not enough for effective epidemiological control, and a level of isolation greater than that is recommended.

The impact of different isolation levels can be seen in Figs. 10 and 11, for $IL \in [0.3, 0.9]$, which represents the response of epidemiological and economical curves for increasing IL . In Fig. 10 it is possible to see how the infection curve I_t flattens as the isolation level increases from no isolation towards lockdown. Fig. 11 shows that as the value of IL increases, wealth loss of the $A3$ agents is higher, represented by $W_{S,t}^{A3}$ curve, showing the importance of agent’s mobility in the economy.

5.7. Scenario 6: use of face masks

Evidence was found about the use of masks and gloves as measures against viral spreading [68]. This scenario represents the policy of mandatory usage of face masks and physical distancing, but without imposing restrictions on the mobility of agents.

This scenario was implemented by reducing the contagion distance $\beta_1 = 0.5$ and the contagion rate $\beta_2 = 0.3$ as the effect of using masks and physical distancing. Fig. 12 shows a flatter I_t curve when compared to scenario 5 while still keeping economic performance close to B. Notice, however, that D_t is significantly higher when compared with scenarios 2 and 3.

5.8. Scenario 7: use of face masks and 50% of social isolation

This scenario combines the policies used in the scenarios 5 and 6, granting the necessary use of face masks plus partial isolation of

⁵ See <https://agenciabrasil.ebc.com.br/en/politica/noticia/2020-04/bolsonaro-brazil-must-not-be-informed-through-panic> - Accessed: June 03, 2020, and <https://www.bbc.com/814portuguese/internacional-52043112> - Accessed: June 03, 2020.

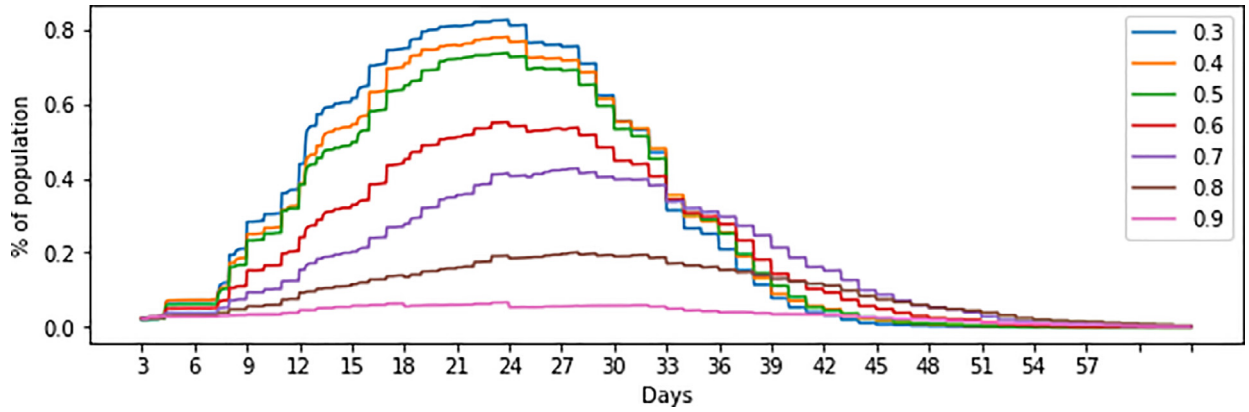


Fig. 10. Infection curves by varying values of partial isolation level (IL).

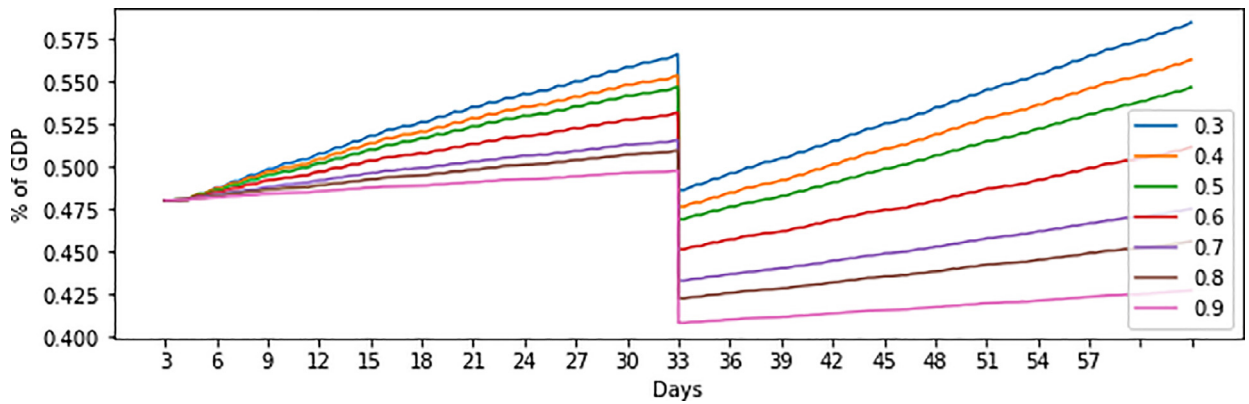


Fig. 11. $W_{S_t}^{A3}$ curves by varying values of partial isolation level (IL).

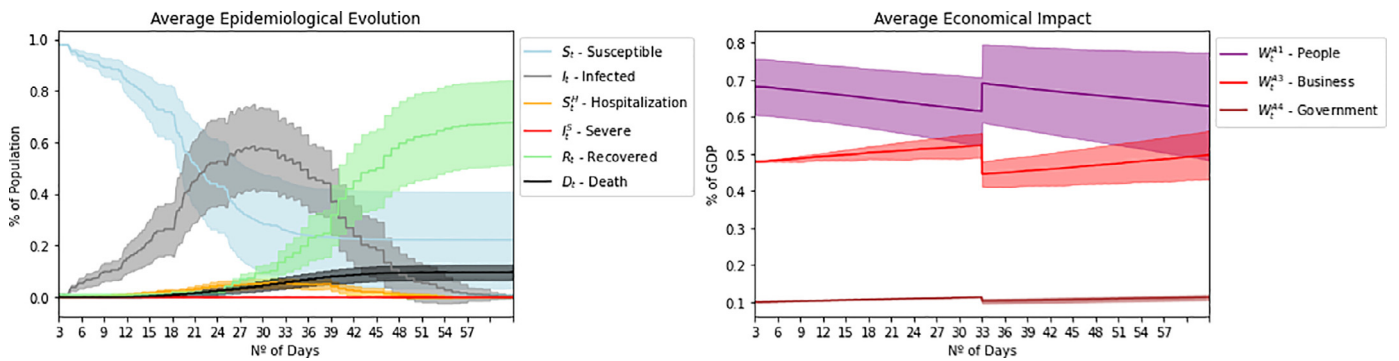


Fig. 12. Daily averaged response variables for Scenario 6.

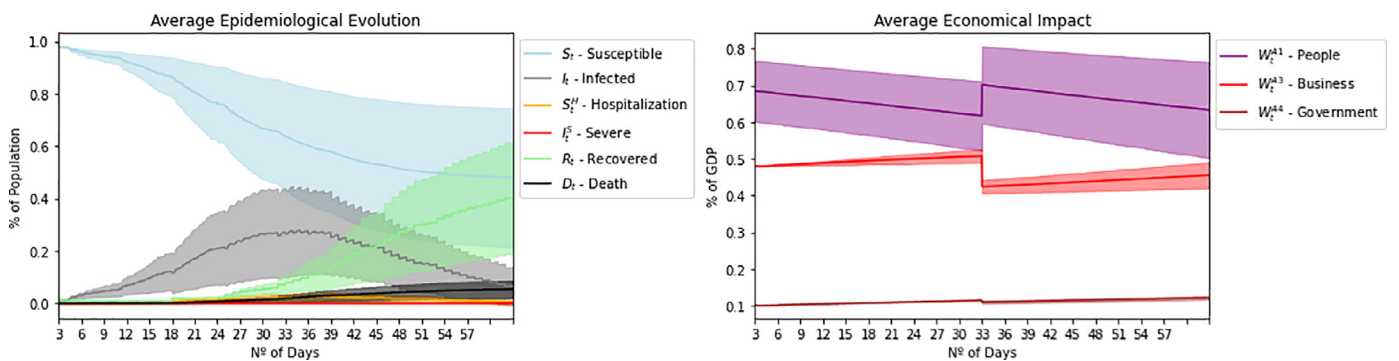


Fig. 13. Daily averaged response variables for Scenario 7.

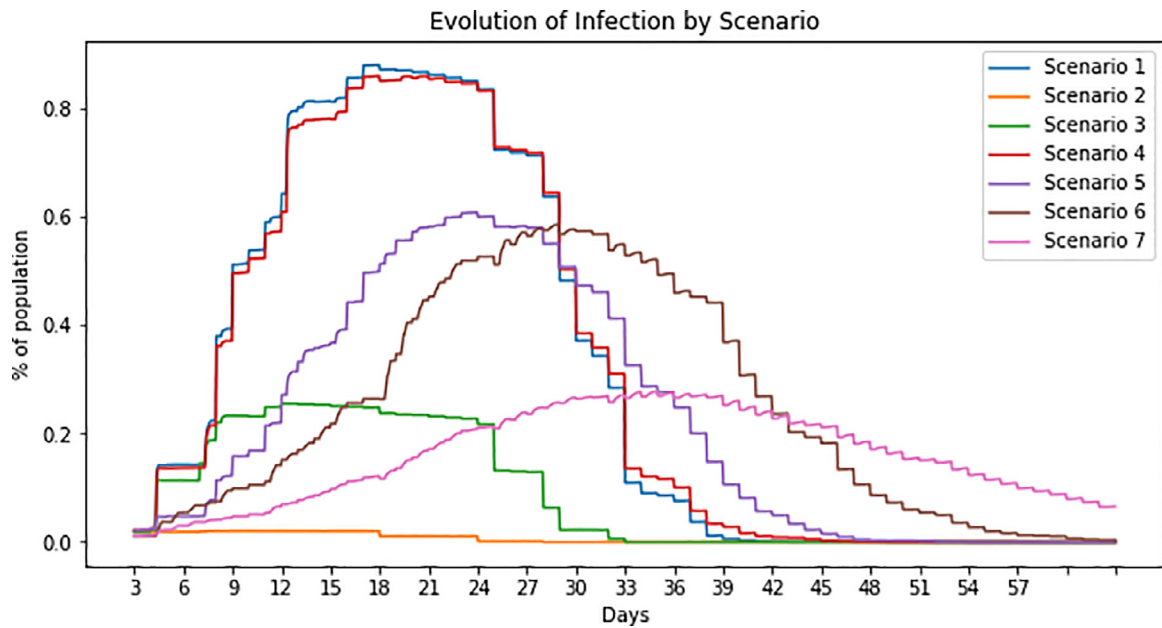


Fig. 14. Infection evolution for the several scenarios.

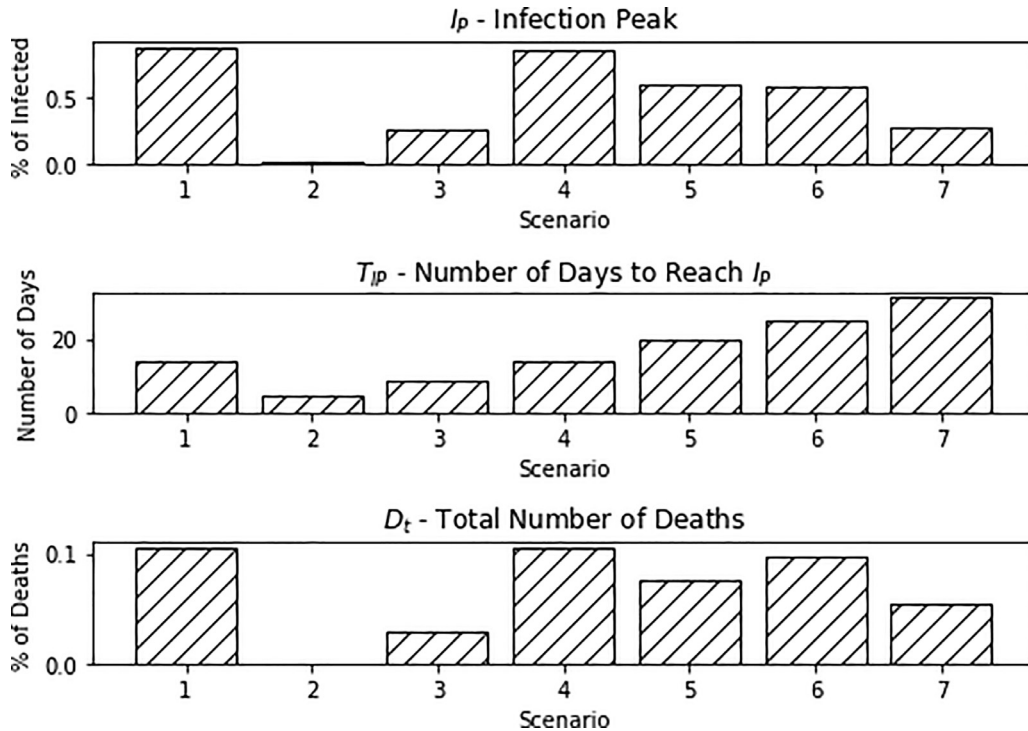


Fig. 15. Death evolution for the several scenarios.

the population. This scenario was implemented by using $\beta_1 = 0.5$, $\beta_2 = 0.3$ and $IL = 0.5$.

Fig. 13 shows the dynamics of this scenario. Although the D_t is still above the values of scenarios 2 and 3, it presents less resistance from the general population. The I_t is flattened, and the economy, despite the downturn, suffers less than it would in scenarios with lockdown. This scenario has already been discussed in [68] with similar results.

5.9. Comparisons among the scenarios

The I_t curves (averages) of each scenario are shown in Fig. 14. There, the effects of each intervention policy in flattening the curve

can be observed and contrasted. The epidemiological effectiveness of the scenarios are shown in Fig. 15, which compares the infection peak I_p reached in each case, the number of days T_{IP} to reach the peak I_p and the max number of deaths D_t (as a proportion of the population).

As expected, scenarios 2 and 3 have the best epidemiological values followed by scenario 7.

Fig. 16 shows the economic result of each scenario for the agent types A1, A3 and A4. Assuming that businesses are not firing anyone, from the point of view of the citizen, scenarios 2 and 3 are not economically damaging. On the other hand, the same scenarios are the worst from the business perspective. At this point, it is important to explain that the expenses of government in our simu-

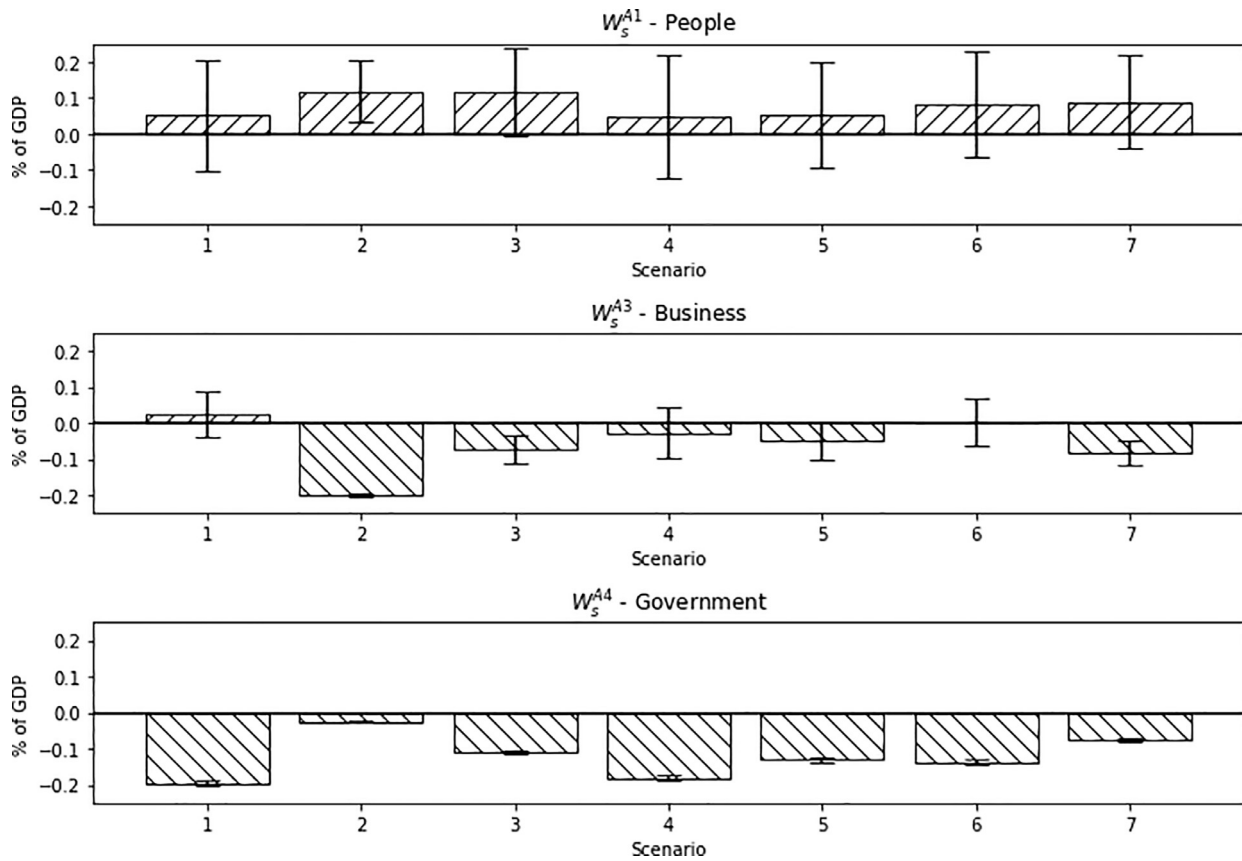


Fig. 16. Economical result of each scenario compared to Scenario 0 by response variable.

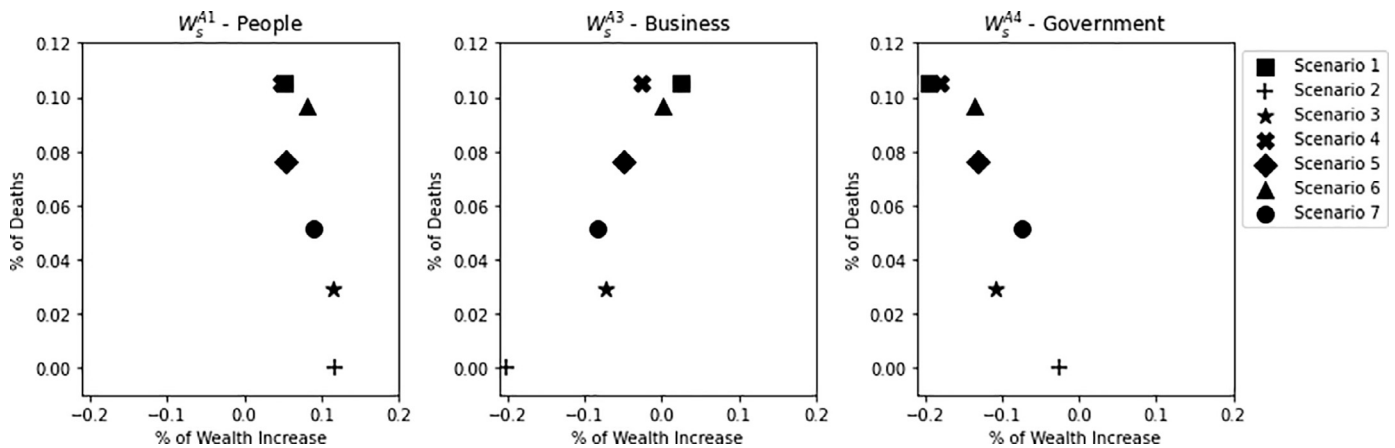


Fig. 17. Percentage of deaths versus percentage of GDP variation.

lation are related with the costs of the healthcare system. Thus, in scenarios with a high number of deaths, such as scenarios 1 and 4, the cost of maintaining the healthcare system is increased which demands an increase of public expenses.

Fig. 17 shows the scatter plots of the wealth increase (with respect to the baseline) of each type of agent by the percentage of deaths in the populations. It can be seen that, from a life preservation perspective, there is no better policy than the lockdown (scenario 2). Furthermore, in the simulated model, scenario 2 Pareto dominates⁶ all the scenarios for both people an government. On

the other hand, it represents the worst case, financially, for businesses.

In the impossibility of enforcing a lockdown (discarding scenarios 2 and 3), which may happen in underdeveloped countries, the best solution is represented by scenario 7. From the remaining Pareto optimal solutions for businesses, it is the one with lowest number of deaths. It also becomes the best solution for government and people in both wealth and number of deaths.

⁶ Given a set of criteria, *Pareto optimality* can be defined as a situation where no individual criterion can be better off without making at least one other criterion

worse off. Given an initial situation, a *Pareto improvement* is a new situation where there will be gains in all criteria. A situation is called *Pareto dominated* if it has a Pareto improvement. Finally, a situation is called *Pareto optimal* if no change could lead to an improvement in all the objectives.

6. Conclusion

The COVID-19 pandemic brought to humankind many challenges, including the demand for new medical treatments, social policies and economical approaches. The fast response of the scientific community to deal with coronavirus was divided into studies of the epidemiological aspects, proposals of new treatments and diagnostic tools and new models to forecast the viral spreading, including SIR and SEIR models among others. Nonetheless, few studies focused on looking at the pandemics as a governmental policy-making problem. With this viewpoint, although the epidemiological aspects are priority, the social and economical aspects can not be neglected.

The present work proposed an Agent-Based Model (ABM) that simulates the epidemiological and economical effects of COVID-19 pandemic in a closed society, whose results can be generalized for wider contexts and used by governmental rulers to prospect social policies and assess its potential effectiveness in real scenarios.

The model was encapsulated in the free and open source software library COVID-ABS, which contains 29 epidemiological, social, demographic and economic input parameters, and 10 output response variables. New features can be designed and the library can be easily extended to other scenarios.

In a wider perspective, the proposed approach can be used as a decision-support system for the governments and scientific community. Policy-makers can design scenarios and evaluate the effectiveness of social interventions through different simulations, and analyse how the P parameters, in the time horizon of T , can affect the response variables Θ .

Seven different scenarios were elaborated to reflect specific social interventions. Lockdown and conditional lockdown were the best evaluated scenarios in preserving lives. These scenarios present a slower evolution of the epidemic, a smaller number of infections and deaths. Given the impossibility of implementing lockdown policies, the scenario with 50% of social isolation with using masks and physical distancing was the best approach in the preservation of lives. On the other hand, the vertical isolation scenario is totally ineffective and resembles the “Do nothing” scenario.

The results showed that COVID-ABS approach was capable to effectively simulate social intervention scenarios in line with the results presented in the literature. Also, the results showed that policies adopted by some countries, for instance US, Sweden and Brazil, are ineffective when the objective is to preserve lives. Governments that chose to preserve the economy by not using severe isolation policies, fatally reached a situation with a high cost in human lives, and still embittered economic losses. The evidence provided by the simulation model shows that there is a false dichotomy between healthcare and the economy. In the scenarios where it was tried to save the economy by not taking hard social isolation policies, consequently, the social costs ended up impacting negatively into the economy.

COVID-ABS is an open software and can be easily extended and customized. Also, new scenarios can be designed, taking into consideration the specificities of each region under study. Future research aims to improve the model by implementing mechanisms to close and open companies as well as allowing people to get fired. In addition, it will be integrated with optimization libraries, for automatic scenario creation, and multi-criteria decision making tools that could help governmental crisis committees to plan and manage the social policies to mitigate the COVID-19 effects.

Declaration of Competing Interest

The authors declare that they have no known competing financial interests or personal relationships that could have appeared to influence the work reported in this paper.

CRediT authorship contribution statement

Petrônio C.L. Silva: Conceptualization, Software, Writing - original draft, Funding acquisition, Project administration. **Paulo V.C. Batista:** Conceptualization, Methodology, Supervision, Funding acquisition. **Hélder S. Lima:** Writing - review & editing, Visualization, Data curation, Investigation. **Marcos A. Alves:** Investigation, Writing - original draft, Visualization. **Frederico G. Guimarães:** Conceptualization, Methodology, Writing - review & editing, Supervision. **Rodrigo C.P. Silva:** Methodology, Validation, Writing - review & editing.

Acknowledgements

Petrônio Silva, Paulo Batista and Helder Seixas would like to thank the financial support given by the Instituto Federal do Norte de Minas Gerais, Brazil.

Marcos A. Alves declares that this work has been supported by the Brazilian agency CAPES.

Frederico Gadelha Guimarães would like to thank the support given by the Brazilian Agencies CNPq (grant no. 306850/2016-8) and FAPEMIG.

References

- [1] Huang C, Wang Y, Li X, Ren L, Zhao J, Hu Y, et al. Clinical features of patients infected with 2019 novel coronavirus in Wuhan, China. *Lancet* 2020;395(10223):497–506. doi:10.1016/S0140-6736(20)30183-5.
- [2] Bakker M, Berke A, Groh M, Pentland AS, Moro E. Effect of social distancing measures in the New York City metropolitan area. Tech. Rep.. Boston: Massachusetts Institute of Technology; 2020.
- [3] Prem K, Liu Y, Russell TW, Kucharski AJ, Eggo RM, Davies N, et al. The effect of control strategies to reduce social mixing on outcomes of the COVID-19 epidemic in Wuhan, China: a modelling study. *Lancet Public Health* 2020;5(5):E261–70.
- [4] Jefferson T, Foxlee R, Mar CD, Dooley L, Ferroni E, Hewak B, et al. Physical interventions to interrupt or reduce the spread of respiratory viruses: systematic review. *BMJ* 2008;336(7635):77–80. doi:10.1136/bmj.39393.510347.BE. <https://www.bmj.com/content/336/7635/77.full.pdf>
- [5] Ribeiro MHD, da Silva RG, Mariani VC, dos Santos Coelho L. Short-term forecasting COVID-19 cumulative confirmed cases: perspectives for Brazil. *Chaos Solitons Fractals* 2020:109853.
- [6] Ferguson N, Laydon D, Nedjati Gilani G, Imai N, Ainslie K, Baguelin M, et al. Report 9: impact of non-pharmaceutical interventions (NPIs) to reduce COVID19 mortality and healthcare demand Tech. Rep.. Imperial College London, London; 2020.
- [7] Bossert A, Kersting M., Timme M., Schröder M., Feki A., Coetzee J., et al. Limited containment options of COVID-19 outbreak revealed by regional agent-based simulations for South Africa. arXiv:2004.05513 2020.
- [8] Van Dyke Parunak H, Savit R, Riolo RL. Agent-based modeling vs equation-based modeling: a case study and users' guide. In: Sichman JS, Conte R, Gilbert N, editors. Multi-agent systems and agent-based simulation. Berlin, Heidelberg: Springer Berlin Heidelberg; 1998. p. 10–25. ISBN 978-3-540-49246-7.
- [9] Anastassopoulou C, Russo L, Tsakris A, Siettos C. Data-based analysis, modelling and forecasting of the COVID-19 outbreak. *PLoS ONE* 2020;15(3):e0230405.
- [10] Barlow NS, Weinstein SJ. Accurate closed-form solution of the sir epidemic model. *Physica D* 2020:132540.
- [11] Weissman GE, Crane-Droesch A, Chivers C, Luong T, Hanish A, Levy MZ, et al. Locally informed simulation to predict hospital capacity needs during the COVID-19 pandemic. *Ann Intern Med* 2020.
- [12] Fanelli D, Piazza F. Analysis and forecast of COVID-19 spreading in China, Italy and France. *Chaos Solitons Fractals* 2020;134:109761.
- [13] Choi S, Ki M. Estimating the reproductive number and the outbreak size of COVID-19 in Korea. *Epidemiol Health* 2020;42.
- [14] Vega DI. Lockdown, one, two, none, or smart. modeling containing COVID-19 infection. a conceptual model. *Sci Total Environ* 2020:138917.
- [15] Kuniya T. Prediction of the epidemic peak of coronavirus disease in Japan. *J Clin Med* 2020;9(3):789.
- [16] Kim S, Kim Y-J, Peck KR, Jung E. School opening delay effect on transmission dynamics of coronavirus disease 2019 in Korea: based on mathematical modeling and simulation study. *J Korean Med Sci* 2020;35(13).
- [17] Sugiyanto S, Abrori M. A mathematical model of the COVID-19 cases in Indonesia (under and without lockdown enforcement). *Biol Med Nat Prod Chem* 2020;9(1):15–19.
- [18] Manchein C, Brugnago EL, da Silva RM, Mendes CF, Beims MW. Strong correlations between power-law growth of COVID-19 in four continents and the inefficiency of soft quarantine strategies. *Chaos* 2020;30(4):041102.

- [19] Tang B, Xia F, Tang S, Bragazzi NL, Li Q, Sun X, et al. The effectiveness of quarantine and isolation determine the trend of the COVID-19 epidemics in the final phase of the current outbreak in China. *Int J Infect Dis* 2020.
- [20] Tuite AR, Fisman DN, Greer AL. Mathematical modelling of COVID-19 transmission and mitigation strategies in the population of Ontario, Canada. *CMAJ* 2020;192(19):E497–505.
- [21] Abdo MS, Shah K, Wahash HA, Panchal SK. On a comprehensive model of the novel coronavirus (COVID-19) under Mittag-Leffler derivative. *Chaos Solitons Fractals* 2020:109867.
- [22] Maugeri A, Barchitta M, Battiato S, Agodi A. Estimation of unreported novel coronavirus (SARS-CoV-2) infections from reported deaths: susceptible-exposed-infectious-recovered-dead model. *J Clin Med* 2020;9(5):1350.
- [23] Ivorra B, Ferrández MR, Vela-Pérez M, Ramos A. Mathematical modeling of the spread of the coronavirus disease 2019 (COVID-19) taking into account the undetected infections. the case of China. *Commun Nonlinear Sci Numer Simul* 2020:105303.
- [24] Liu Z, Huang S, Lu W, Su Z, Yin X, Liang H, et al. Modeling the trend of coronavirus disease 2019 and restoration of operational capability of metropolitan medical service in China: a machine learning and mathematical model-based analysis. *Global Health Res Policy* 2020;5:1–11.
- [25] Peirlinck M, Linka K, Costabal FS, Kuhl E. Outbreak dynamics of COVID-19 in China and the United States. *Biomech Model Mechanobiol* 2020:1.
- [26] Chatterjee K, Chatterjee K, Kumar A, Shankar S. Healthcare impact of COVID-19 epidemic in India: stochastic mathematical model. *Med J Armed Forces India* 2020.
- [27] Li S, Song K, Yang B, Gao Y, Gao X. Preliminary assessment of the COVID-19 outbreak using 3-staged model e-ISHR. *J Shanghai Jiaotong Univ (Science)* 2020;25:157–64.
- [28] Arino J, Portet S. A simple model for COVID-19. *Infect Dis Model* 2020.
- [29] Wang H, Wang Z, Dong Y, Chang R, Xu C, Yu X, et al. Phase-adjusted estimation of the number of coronavirus disease 2019 cases in Wuhan, China. *Cell Discov* 2020;6(1):1–8.
- [30] Wu JT, Leung K, Leung GM. Nowcasting and forecasting the potential domestic and international spread of the 2019-nCoV outbreak originating in Wuhan, China: a modelling study. *Lancet* 2020;395(10225):689–97.
- [31] Lauer SA, Grantz KH, Bi Q, Jones FK, Zheng Q, Meredith HR, et al. The incubation period of coronavirus disease 2019 (COVID-19) from publicly reported confirmed cases: estimation and application. *Ann Intern Med* 2020;172(9):577–82.
- [32] Ndairou F, Area I, Nieto JJ, Torres DF. Mathematical modeling of COVID-19 transmission dynamics with a case study of Wuhan. *Chaos Solitons Fractals* 2020:109846.
- [33] Figueredo GP, Siebers PO, Owen MR, Reys J, Aickelin U. Comparing stochastic differential equations and agent-based modelling and simulation for early-stage cancer. *PLoS ONE* 2014;9(4):e95150. doi:10.1371/journal.pone.0095150.
- [34] Chang S.L., Harding N., Zachreson C., Cliff O.M., Prokopenko M.. Modelling transmission and control of the COVID-19 pandemic in Australia. arXiv:2003.10218 2020.
- [35] Braun B., Taraktaş B., Beckage B., Molofsky J.. Phase transitions and social distancing control measures for SARS-CoV-2 on small world networks. arXiv:2005.09751 2020.
- [36] Kai D., Goldstein G.-P., Morgunov A., Nangalia V., Rotkirch A.. Universal masking is urgent in the COVID-19 pandemic: SEIR and agent based models, empirical validation, policy recommendations. arXiv:2004.13553 2020.
- [37] Gopalan A., Tyagi H.. How reliable are test numbers for revealing the COVID-19 ground truth and applying interventions? arXiv:2004.12782 2020.
- [38] D’Orazio M., Bernardini G., Quagliarini E.. How to restart? An agent-based simulation model towards the definition of strategies for COVID-19 “second phase” in public buildings. arXiv:2004.12927 2020.
- [39] Hoertel N, Blachier M, Blanco C, Olfson M, Massetti M, Limosin F, et al. Facing the COVID-19 epidemic in NYC: a stochastic agent-based model of various intervention strategies. medRxiv 2020.
- [40] Grauer J., Löwen H., Liebchen B.. Strategic spatiotemporal vaccine distribution halves deaths due to an infectious disease. arXiv:2005.04056 2020.
- [41] Inoue H., Todo Y.. The propagation of the economic impact through supply chains: the case of a mega-city lockdown against the spread of COVID-19. Available at SSRN 3564898 2020.
- [42] Dignum F., Dignum V., Davidsson P., Ghorbani A., van der Hurk M., Jensen M., et al. Analysing the combined health, social and economic impacts of the coronavirus pandemic using agent-based social simulation. arXiv:2004.12809 2020.
- [43] IBGE. Pirâmide etária. <https://educa.ibge.gov.br/jovens/conheca-o-brasil/populacao/18318-piramide-etaria.html>, Access: June 02, 2020; 2020.
- [44] IBGE. Censo demográfico: Tabela 2019 - moradores em domicílios particulares permanentes por densidade de moradores por cômodo e número de banheiros. <https://sidra.ibge.gov.br/tabela/2019>, Access: June 02, 2020; 2020.
- [45] IPEA. Estimativa da população em situação de rua no Brasil. http://repositorio.ipea.gov.br/bitstream/11058/7289/1/td_2246.pdf, Access: June 02, 2020; 2020.
- [46] Ferguson N, Laydon D, Nedjati Gilani G, Imai N, Ainslie K, Baguelin M, et al. Report 9: Impact of non-pharmaceutical interventions (NPIs) to reduce COVID-19 mortality and healthcare demand Tech. Rep.. Imperial College London; 2020.
- [47] Lima CMAoD. Informações sobre o novo coronavírus (COVID-19). *Radiol Bras* 2020;53(2) V–VI.
- [48] Li Q, Guan X, Wu P, Wang X, Zhou L, Tong Y, et al. Early transmission dynamics in Wuhan, China, of novel coronavirus-infected pneumonia. *N Engl J Med* 2020.
- [49] Lauer SA, Grantz KH, Bi Q, Jones FK, Zheng Q, Meredith HR, et al. The incubation period of coronavirus disease 2019 (COVID-19) from publicly reported confirmed cases: estimation and application. *Ann Intern Med* 2020;172(9):577–82.
- [50] Housen T, Parry A.E., Sheel M. How long are you infectious when you have coronavirus? <https://theconversation.com/how-long-are-you-infectious-when-you-have-coronavirus-135295>. Access: June 02, 2020; 2020.
- [51] IndexMundi. Income distribution: percentage share of income or consumption is the share that accrues to subgroups of population indicated by deciles or quintiles. <https://www.indexmundi.com/facts/visualizations/income-distribution/#country=br>, Access: June 02, 2020; 2020.
- [52] World Bank. Lac equity lab: income inequality - composition by quintile. <https://www.worldbank.org/en/topic/poverty/lac-equity-lab1/income-inequality/composition-by-quintile>, Access: June 03, 2020; 2020.
- [53] IBGE. Demografia das empresas e empreendedorismo 2017: taxa de sobrevivência foi de 84,8%. <https://agenciadenoticias.ibge.gov.br/agencia-sala-de-imprensa/2013-agencia-de-noticias/releases/25738-demografia-das-empresas-e-empreendedorismo-2017-taxa-de-sobrevivencia-foi-de-84-8>, Access: June 03, 2020; 2020.
- [54] Exame. Desemprego sobe para 12,2% no 1o trimestre e atinge 12,9 milhões, diz ibge. <https://exame.com/economia/brasil-tem-desemprego-de-122-no-primeiro-trimestre-diz-ibge/>, Access: June 03, 2020; 2020.
- [55] Sebrae. Estudo sobre o empreendedorismo informal no Brasil 2018. Tech. Rep.. Sebrae; May, 2019.
- [56] Howden LM, Meyer JA. Age and sex compositions: 2010. 2010 census briefs. Tech. Rep.. US Department of Commerce, Economics and Statistics Administration US Census Bureau; 2010.
- [57] Rights U.N.H.. Universal declaration of human rights at 70: 30 articles on 30 articles - article 24. <https://www.ohchr.org/EN/NewsEvents/Pages/DisplayNews.aspx?NewsID=23966&LangID=E>, Access: June 02, 2020; 2020.
- [58] Imai N, Cori A, Dorigatti I, Baguelin M, Donnelly CA, Riley S, et al. Report 3: transmissibility of 2019-nCoV Tech. Rep.. Imperial College London; 2020.
- [59] Giordano G, Blanchini F, Bruno R, Colaneri P, Di Filippo A, Di Matteo A, et al. Modelling the COVID-19 epidemic and implementation of population-wide interventions in Italy. *Nat Med* 2020:1–6.
- [60] Verity R, Okell LC, Dorigatti I, Winskill P, Whittaker C, Imai N, et al. Estimates of the severity of COVID-19 disease. medRxiv 2020.
- [61] Dorigatti I, Okell L, Cori A, Imai N, Baguelin M, Bhatia S, et al. Report 4: severity of 2019-novel coronavirus (nCoV) Tech. Rep.. Imperial College London, London; 2020.
- [62] Singh R, Adhikari R. Age-structured impact of social distancing on the COVID-19 epidemic in India. arXiv:2003.12055 2020.
- [63] Meidan D., Schulamann N., Cohen R., Haber S., Yaniv E., Sarid R., et al. Alternating quarantine for sustainable mitigation of COVID-19. arXiv:2004.01453v2 2020.
- [64] Warren M.S., Skillman S.W.. Mobility changes in response to COVID-19. arXiv:2003.14228 2020.
- [65] Engle S., Stromme J., Zhou A.. Staying at home: mobility effects of COVID-19. Available at SSRN: <https://ssrn.com/abstract=3565703> or <http://dxdoi.org/102139/ssrn3565703> 2020.
- [66] Cousins S. New Zealand eliminates COVID-19. *Lancet* 2020;395(10235). doi:10.1016/S0140-6736(20)31097-7.
- [67] Duczmal LH, Almeida ACL, Duczmal DB, Alves CRL, Magalhães FCO, Lima MSd, et al. Vertical social distancing policy is ineffective to contain the COVID-19 pandemic. *Cadernos de Saúde Pública* 2020;36:e00084420.
- [68] Chu DK, Akl EA, Duda S, Solo K, Yaacoub S, Schünemann HJ, et al. Physical distancing, face masks, and eye protection to prevent person-to-person transmission of SARS-CoV-2 and COVID-19: a systematic review and meta-analysis. *Lancet* 2020.