


SHORT REPORT

Open Access



The *MLH1* polymorphism rs1800734 and risk of endometrial cancer with microsatellite instability

Holly Russell¹, Katarzyna Kedzierska², Daniel D. Buchanan^{3,4,5}, Rachael Thomas¹, Emma Tham^{6,7}, Miriam Mints⁸, Anne Keränen⁹, Graham G. Giles^{10,11,12}, Melissa C. Southey^{10,11,12}, Roger L. Milne^{10,11,12}, Ian Tomlinson¹³, David Church², Amanda B. Spurdle¹⁴, Tracy A. O'Mara¹⁴ and Annabelle Lewis^{1,15*} 

Abstract

Both colorectal (CRC, 15%) and endometrial cancers (EC, 30%) exhibit microsatellite instability (MSI) due to *MLH1* hypermethylation and silencing. The *MLH1* promoter polymorphism, rs1800734 is associated with MSI CRC risk, increased methylation and reduced *MLH1* expression. In EC samples, we investigated rs1800734 risk using MSI and MSS cases and controls. We found no evidence that rs1800734 or other *MLH1* SNPs were associated with the risk of MSI EC. We found the rs1800734 risk allele had no effect on *MLH1* methylation or expression in ECs. We propose that *MLH1* hypermethylation occurs by different mechanisms in CRC and EC.

Keywords: Endometrial cancer, Mismatch repair pathway, Microsatellite instability, Single nucleotide polymorphism, *MLH1*, rs1800734

Introduction

Endometrial cancer (EC) is the most common gynaecological cancer in the developed world. Defects in the mismatch repair (MMR) pathway are common in EC, with up to 30% of tumours exhibiting loss of expression of one or more MMR proteins, high levels of microsatellite repeat instability (MSI) and hypermutation [1]. Around 15% of colorectal cancers are MSI and hypermutated [2]. These form a distinct prognostic subset with early-stage MSI CRCs having a more favourable outcome than MSS [3, 4], and MSI CRCs responding well to immunotherapy due to the abundance of neoantigens caused by hypermutation [5, 6]. Therefore, MSI status in CRC can be used both as an independent

marker of CRC prognosis and a predictor of therapeutic response. In EC however, despite the prevalence of MSI, there are conflicting reports about whether or how it is associated with patient prognosis [1, 7–10]. There is also a lack of evidence for MSI as a predictive marker of therapeutic response in EC, although immunotherapies have now been approved for use in all MSI- and MMR-deficient tumours, so this data should be forthcoming [11].

MutL homologue 1 (*MLH1*) is the most commonly disrupted MMR gene in both CRC and EC. This is predominantly due to somatic silencing by promoter hypermethylation in both types of cancer, and less frequently caused by germline pathogenic variants [12]. In CRC a promoter polymorphism, rs1800734 in the 5' untranslated region of *MLH1* is strongly associated with an increased risk of MSI cancer, as well as hypermethylation and reduced *MLH1* transcription [13–17]. This polymorphism has no association with microsatellite stable (MSS) CRC and shows a much weaker association in

* Correspondence: annabelle.lewis@brunel.ac.uk

¹Cancer Gene Regulation Group, Wellcome Trust Centre for Human Genetics, University of Oxford, Roosevelt Drive, Oxford OX3 7BN, UK

¹⁵Division of Biosciences, Department of Life Sciences, College of Health and Life Sciences, Brunel University, Kingston Lane, Uxbridge UB8 3PH, UK

Full list of author information is available at the end of the article



© The Author(s). 2020 **Open Access** This article is licensed under a Creative Commons Attribution 4.0 International License, which permits use, sharing, adaptation, distribution and reproduction in any medium or format, as long as you give appropriate credit to the original author(s) and the source, provide a link to the Creative Commons licence, and indicate if changes were made. The images or other third party material in this article are included in the article's Creative Commons licence, unless indicated otherwise in a credit line to the material. If material is not included in the article's Creative Commons licence and your intended use is not permitted by statutory regulation or exceeds the permitted use, you will need to obtain permission directly from the copyright holder. To view a copy of this licence, visit <http://creativecommons.org/licenses/by/4.0/>. The Creative Commons Public Domain Dedication waiver (<http://creativecommons.org/publicdomain/zero/1.0/>) applies to the data made available in this article, unless otherwise stated in a credit line to the data.

data sets unstratified by MSI status. Using artificially demethylated MSI CRC cell lines heterozygous for rs1800734, we have previously shown that methylation accumulation occurs more quickly on the risk (A) allele than the protective (G) allele and that this is accompanied by an allelic bias in *MLH1* transcription, with more expression from the protective allele [16]. We have suggested that the risk allele is more prone to methylation accumulation due to disruption of the binding site of transcription factor TFAP4, which binds strongly to the protective allele only [16, 18, 19].

In EC, given the prevalence of MSI cancers with *MLH1* epigenetic silencing, we also aimed to determine whether rs1800734 is also associated with the risk of MSI EC. Existing GWAS studies have not been stratified by MSI status so any MSI specific associations were unlikely to have been detected [20]. We performed a candidate association study of single nucleotide polymorphisms (SNPs) in the *MLH1* promoter region in four EC case-control sample sets stratified by MMR protein expression status. We have also investigated the effects of rs1800734 genotype on *MLH1* methylation and expression in ECs. To assess the role of rs1800734 in a dynamic system, we demethylated an MSI EC cell line heterozygous for rs1800734 and studied allele-specific methylation accumulation and *MLH1* mRNA expression.

Results and discussion

We inferred MSI status, using MMR protein expression levels, on patients from four endometrial cancer datasets previously used for published genome-wide association studies [20, 21]. We then carried out association analyses for rs1800734 and 126 other SNPs in a 1 Mb region centred on the *MLH1* transcriptional start site on all MSI and MSS cases vs controls for each study (total numbers used in the meta-analysis were the following: MSI $n = 225$, MSS $n = 563$, controls $n = 13,582$, consisting of ANECS-Illumina genotyped, ANECS-iCOGS genotyped, RENDOCAS, MCCS, Fig. 1a; detailed numbers are broken down in supplementary table 1). We assessed all the SNPs in the *MLH1* promoter and surrounding regions to cover all SNPs in LD with rs1800734 (only 3 SNPs with $r^2 > 0.5$) and allow for the possibility that variants in binding sites of transcription factors (TFs) other than TFAP4 are more important for regulating *MLH1* transcription in endometrial cell types. SNPs within in silico-predicted TF binding sites, and any known functional role of these TFs in EC, are shown in supplementary table 2. We carried out a meta-analysis and found no evidence of MSI EC risk association for rs1800734 (OR = 1.06 CI 0.85–1.33 $p = 0.60$) or any other SNPs in the *MLH1* region (supplementary table 2), after correction for multiple testing. While the sample set is relatively small and the findings will need replicating, a

similarly sized MSI CRC sample set gave a strong rs1800734 risk association (CRC MSI cases $n = 170$, controls $n = 2686$, OR = 1.95, 95% CI 1.50–2.55, $p = 8.04 \times 10^{-7}$, [16]). We estimate that we had 99% power to detect an OR of this magnitude for MSI EC. However, unlike CRCs where the majority of sporadic MSI tumours occur as a result of *MLH1* silencing due to promoter hypermethylation [22, 23], a significant proportion of MSI EC occurs as a result of loss of MSH2/MSH6 protein expression as opposed to *MLH1*/PMS2 (24% 41/173 from ANECS-Illumina, ANECS-iCOGS, MCCS). We hypothesized that the difference in proportion of *MLH1* expressing samples could explain some of the difference in rs1800734 risk association between CRC and EC. We therefore carried out a further meta-analysis (Fig. 1b) selecting only EC samples with loss of *MLH1*/PMS2 protein expression and omitting those in which the MSI was accompanied by loss of MSH2/MSH6 or where MMR protein expression data was not available. This focussed meta-analysis also found no evidence of an association between rs1800734 and *MLH1*/PMS2 deficient EC risk (*MLH1* loss cases $n = 157$, controls $n = 13,582$, OR = 1.12, CI 0.85–1.46 $p = 0.42$, supplementary table 3, power calculations as above indicate a power of 95% with this smaller sample size)

In CRC tumour tissue stratified by genotype (but not in normal tissue), we previously found that rs1800734 acted as an *MLH1* expression quantitative trait locus (eQTL) and a methylation quantitative trait locus (meQTL), with the risk allele associated with higher methylation and lower mRNA expression [16]. We were therefore interested to see whether this was true for EC tumours given that there was no association observed between rs1800734 and EC risk. Using publicly available data from the Cancer Genome Atlas (TCGA-UCEC) we assessed the association of rs1800734 status on *MLH1* promoter methylation and *MLH1* mRNA expression, stratified by MSI status (TCGA-UCEC MSI $n = 206$; MSS $n = 349$; Fig. 1c). No significant differences were found between rs1800734 genotypes for either methylation or mRNA expression. The MSI samples were further classified into high-instability levels (MSI-h) and low (MSI-l) but neither of these subsets showed any significant differences in methylation or expression by genotype (supplementary table 4). Due to lack of complete data on MMR protein expression in TCGA-UCEC samples, we used *MLH1* promoter median methylation levels (median beta > 0.2) in MSI positive samples to infer MSI caused specifically by *MLH1* loss. In this subset, no significant differences were found between rs1800734 genotypes for methylation or mRNA expression (TCGA-UCEC MSI high methylation $n = 135$; MSS $n = 349$; supplementary figure 1). This was despite a significant negative correlation between *MLH1* methylation and mRNA expression levels (Pearson

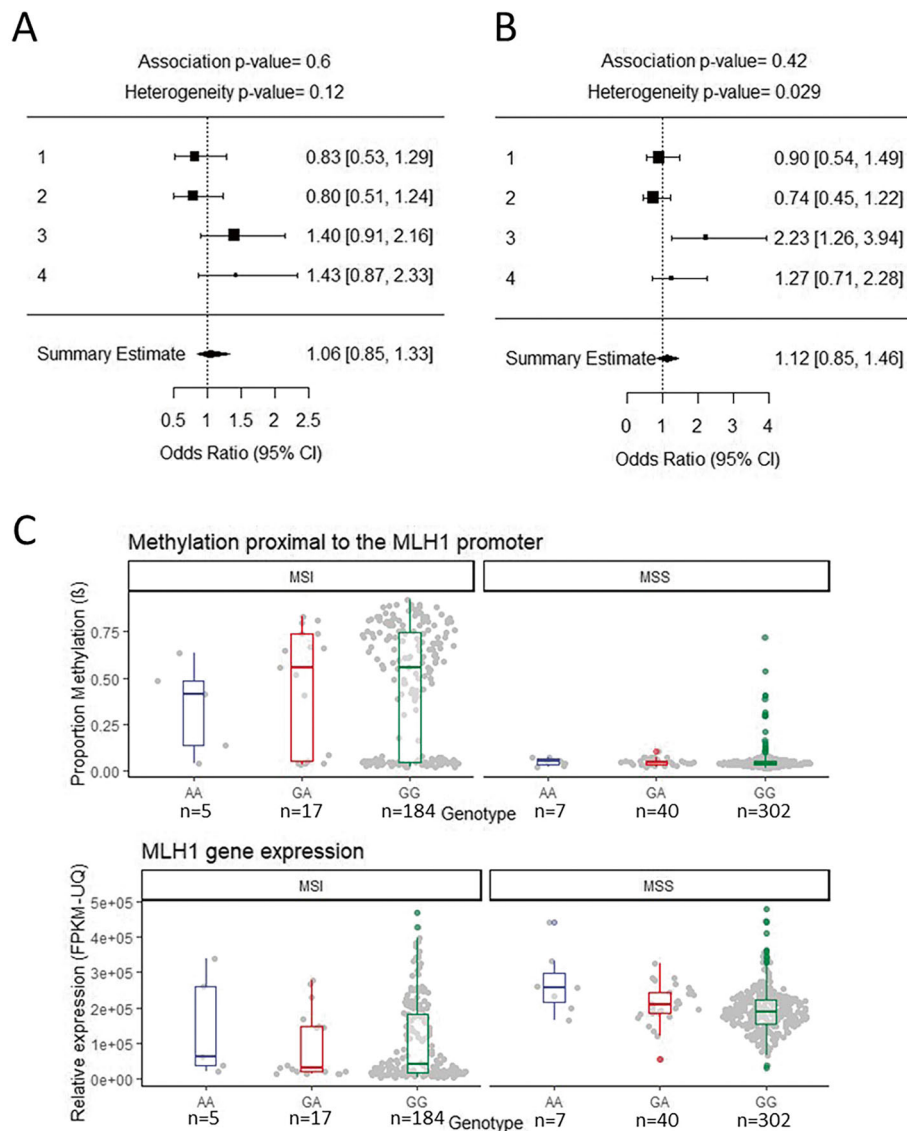


Fig. 1 rs1800734 shows no evidence of association with endometrial cancer risk, *MLH1* promoter methylation or *MLH1* gene expression. **a** A forest plot showing a meta-analysis of four rs1800734 endometrial cancer association analyses performed on MSI cases (overall cases = 225, overall controls = 13582). The plot shows the odds ratio [upper 95% CI, lower 95% CI] of the respective studies. Diamond indicates overall odds ratio and 95% confidence interval with the *p* values generated from a fixed-effects meta-analysis showing no evidence of an association for the rs1800734 SNP with MSI endometrial cancer (*p* = 0.6). Studies included are as follows: (1) ANECS-Illumina genotyped, (2) ANECS-ICOGS genotyped, (3) RENDOCAS and (4) MCCS. **b** A forest plot showing a meta-analysis of four rs1800734 endometrial cancer association analyses performed on MSS cases which show loss of *MLH1*/*PMS2* proteins but not those showing loss of *MSH2*/*MSH6* (overall cases = 157, overall controls = 13582). The plot shows the odds ratio [upper 95% CI, lower 95% CI] of the respective studies. Diamond indicates overall odds ratio and 95% confidence interval with the *p* values generated from a fixed-effects meta-analysis showing no evidence of an association for the rs1800734 SNP with endometrial cancer with loss of *MLH1*/*PMS2* (*p* = 0.42). Studies included are as follows: (1) ANECS-Illumina genotyped, (2) ANECS-ICOGS genotyped, (3) RENDOCAS and (4) MCCS. Interestingly, in the RENDOCAS study, rs1800734 does show a significant association with EC; however, this is based on 25 cases only. **c** A boxplot of the proportion of methylation proximal to the *MLH1* promoter and *MLH1* gene expression in EC patient samples (TCGA-UCEC) stratified by rs1800734 genotype and MSI/MSS status. Methylation beta (β) indicates the median proportion of methylated to unmethylated reads of 3 CpG probes proximal to *MLH1* (probe names: cg00893636, cg02279071, cg13846866). Relative expression (FPKM-UQ) indicates fragments per kilobase of *MLH1* per million mapped reads upper quartile. Plots show the median, upper and lower quartile of expression or methylation stratified by MSI status and rs1800734 genotype (MSI *n* = 206, MSS *n* = 349). rs1800734 genotype had no significant effect on methylation (*p* = 0.556 MSS, *p* = 0.585 MSI; Kruskal-Wallis) or expression (*p* = 0.434 MSI, Kruskal-Wallis) except for a small set of MSS ECs with AA genotype (*n* = 7) in which expression was significantly higher than MSS ECs with the GG genotype (*p* = 0.045, pairwise Wilcoxon). The biological significance of this is uncertain

coefficient = -0.86 , $p = 2.2 \times 10^{-16}$; supplementary figure 2), supporting the prevailing theory that methylation is the primary mechanism of *MLH1* silencing in EC.

We hypothesized that TFAP4 may not be present in endometrial tissues and could therefore offer no protection against promoter methylation accumulation on the protective rs1800734 allele. However, data from the GTEx portal showed expression of TFAP4 in uterine tissue at equivalent or greater levels than intestinal tissues (Common Fund (CF) Genotype-Tissue Expression Project (GTEx) dbGaP Study Accession, phs000424.v8.p2). We therefore checked the activity of the specific TFAP4 binding site at rs1800734 in endometrial cells by carrying out chromatin immunoprecipitation in EC cell lines: one MSI

cell line (NOU1, with *MLH1* promoter methylation) and one MSS cell line (HEC1A, Fig. 2a). TFAP4 did bind at or near rs1800734 in the MSS line and, interestingly, there was a strong allelic bias in its binding as we and others previously observed in CRC cells (supplementary figure 3). As expected, no binding was detected in MSI cells so we treated with 5 Aza-Cytosine to remove methylation and then measured *MLH1* methylation, expression and TFAP4 binding. Our findings differed substantially from CRC cell lines. TFAP4 binding was only restored at very low levels (Fig. 2a). Although some *MLH1* re-expression occurred (Fig. 2b) and promoter methylation was removed and re-established (Fig. 2c), there was no significant allelic bias in either expression or methylation at any stage.

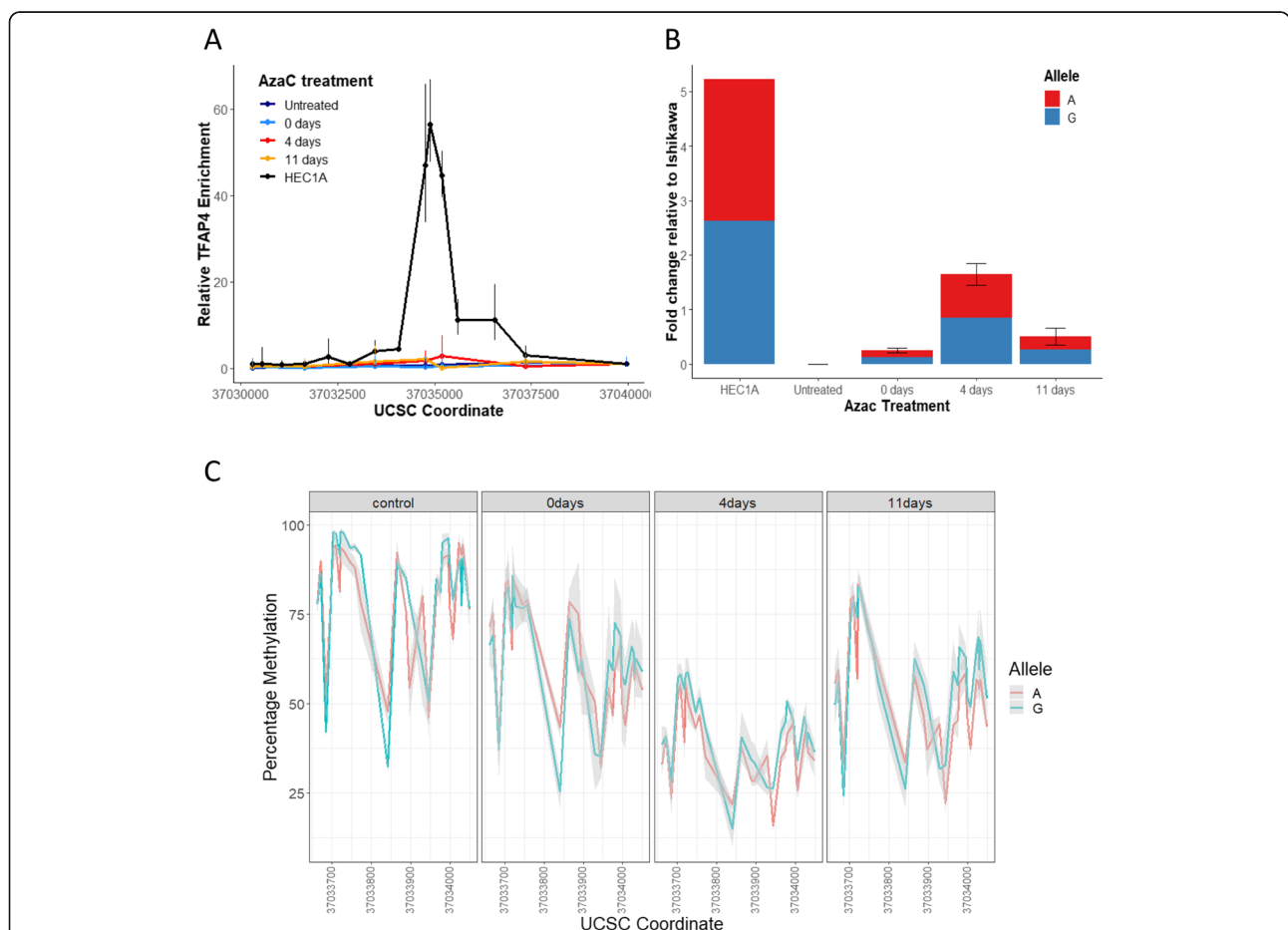


Fig. 2 TFAP4 binding occurs in EC cells but does not result in rs1800734 allelic bias of *MLH1* expression or promoter methylation. **a** TFAP4 binds to MSS but not *MLH1* methylated MSI EC cells. The line graph shows relative TFAP4 enrichment at UCSF coordinates proximal to the *MLH1* promoter in HEC1A (MSS) cells and NOU1 (MSI) cells untreated and 0 days, 4 days and 11 days post 48 h 5'-azacytidine. Relative TFAP4 enrichment was determined after normalization with input DNA using the $\Delta\Delta\text{CT}$ method. Error bars show the standard error of the mean ($n = 3$). HEC1A cells show TFAP4 binding but AzaC treatment did not reactivate TFAP4 expression in NOU1 cells. **b** *MLH1* expression in EC cells shows no rs1800734 allelic bias. RNA was extracted from HEC1A cells and NOU1 cells, untreated, 0 days, 4 days and 11 days post 48 h 5'-azacytidine treatment. The bar chart shows relative mRNA expression levels with error bars showing the standard error of the mean ($n = 3$). Percentages represent the proportion of G or A reads out of the total rs1800734 sequences for each cell line/time point. NOU1 *MLH1* expression is activated by treatment with 5-azacytidine, with the highest expression 0 days post-treatment. Re-repression occurs at 4 days and 11 days post-treatment. There is no significant allelic bias at any stage. **c** 5'-Azacytidine treatment of NOU1 cells removes *MLH1* promoter methylation but no allelic bias is seen in the control or at any post-treatment time point as methylation is re-acquired

In this small candidate study, our results suggest that SNP rs1800734 in the *MLH1* promoter may not be associated with risk of MSI EC, even though this SNP shows a strong association with MSI CRC. This is despite EC and CRC sharing a common mechanism of epigenetic silencing of *MLH1* transcription. The SNP acts as a meQTL and eQTL in CRC but not in EC. In addition, it has allele-specific effects on methylation accumulation and mRNA expression levels in dynamic CRC cell line systems but not in EC cells. Since both cell types exhibit allele-specific TFAP4 binding, we conclude that this is not sufficient for the establishment of meQTL and eQTLs.

Previous findings by Fang et al. [24] have implicated the transcriptional repressor MAFG and cofactors including the de novo methylase DNMT3B in the accumulation of methylation at *MLH1* in CRC. MAFG becomes stabilized by phosphorylation in *BRAF*V600E mutated cells leading to hypermethylation at several promoters, including *MLH1*, and a CpG island methylator phenotype (CIMP). Interestingly, *BRAF*V600E mutations occur commonly in somatic MSI CRC but are very rarely found in MSI EC [25, 26]. Our MSI CRC cell line model (CO-115) but not our MSI EC model (NOU1) carried a *BRAF*V600E mutation. This observation could explain some or all of the differences we see in rs1800734 and cancer risk association between CRC and EC and the lack of any genotype-specific *MLH1* methylation and expression bias in EC tumours and cell lines.

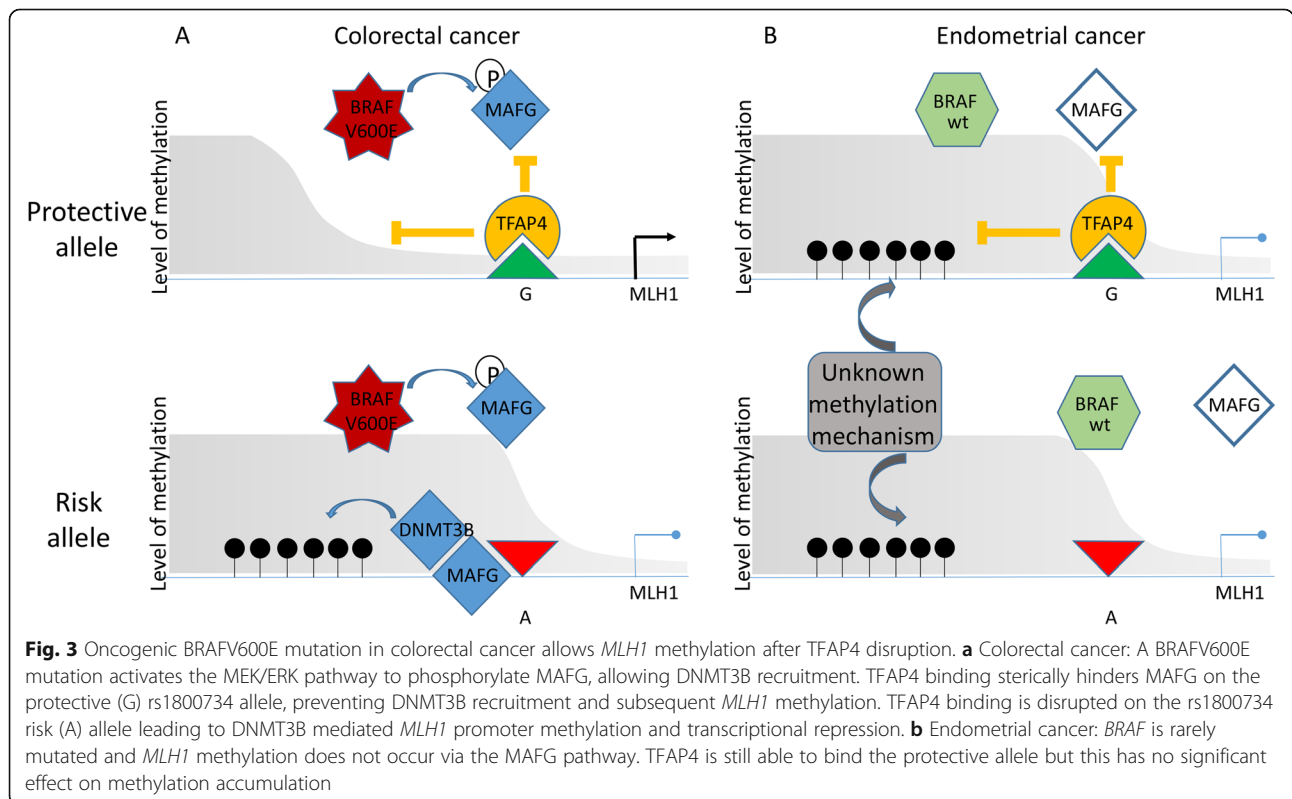
Figure 3 outlines the proposed mechanism to explain the difference in the role of rs1800734 in CRC and EC. In the presence of mutant *BRAF*, TFAP4 and/or cofactor binding on the protective allele of the SNP reduces methylation accumulation via MAFG and DNMT3B. However, in EC when no *BRAF* mutations are present, the methylation is acquired via a different unknown mechanism which is unaffected by TFAP4 binding. Other transcription factors with binding sites upstream of *MLH1*, particularly those known to be associated with EC, merit further investigation.

The pathways to cancer and combination of driver mutations in EC are poorly understood in comparison with CRC. No EC driver mutations associated with hypermethylation of promoters are currently known so an important next step is to uncover the key mutations responsible for *MLH1* methylation and CIMP initiation in EC.

Methods

MMR assessment

Tumour MMR expression data was previously generated by immunohistochemistry (IHC) and assessed as described (ANECS [27], RENOCAS [28], MCCS [29, 30]). Briefly, cases with nuclear staining of all MMR proteins in tumour cells were considered MMR-proficient and classified as MSS. Cases were reported as MMR-deficient when tumour cells showed total or partial



nuclear loss of expression in one or more of the MMR proteins and were classified as MSI.

Candidate SNP meta-analysis

GWAS data for meta-analysis was collated from four endometrial cancer genome-wide association studies [20, 21, 31]—Australian National Endometrial Cancer Studies (ANECS-Illumina genotyped, ANECS-ICOGS genotyped), Registry of Endometrial Cancer in Sweden (RENDOCAS) and Melbourne Collaborative Cohort Study (MCCS). IMPUTE2 was used to impute genotypes to the positive strand of the 1000 Genomes project, v3, phase 1 dataset. Cases were of European ancestry with a confirmed EC diagnosis. Genotyping in each study was performed as previously described [20, 21]: ANECS-Illumina (MSI $n = 66$, MSS $n = 254$, controls $n = 3,083$) with Illumina Infinium 610K; ANECS-ICOGS (MSI $n = 67$, MSS $n = 156$, controls $n = 1,956$) and RENDOCAS (MSI $n = 52$, MSS $n = 88$, controls $n = 7563$) with an Illumina custom array designed by the Collaborative Oncological Gene environment Study initiative (iCOGS) [20] and MCCS (MSI $n = 40$, MSS $n = 65$, controls $n = 980$) with the Illumina OncoArray 534K genotyping ChIP [21]. Controls were country-matched to cases and genotyped using the same platforms.

Total numbers used in the meta-analysis were as follows: MSI $n = 225$, MSS $n = 563$ and controls $n = 13,582$. Quality control consisted of exclusion of SNPs with $< 95\%$ call rates, MAFs $< 1\%$, duplicated results or related individuals. Comprehensive sequencing for germline mutations has not been completed for all ANECS and RENDOCAS studies so it is possible a small number ($< 3\%$) of undiagnosed Lynch syndrome patients are present in the data. SNPs for this candidate study were limited to those within chromosome 3, 1Mb upstream and downstream of *MLH1* transcriptional start site (chr3:36,000,000–38,000,000 hg38; chr3:36024996–38024996 hg19). rs1800734 was directly genotyped in all datasets. To determine if our dataset (MSI and controls) was of a sufficient size, power calculations based on our CRC association study (OR = 1.95, MAF of 0.2, $n = 13807$, case rate = 0.016) indicated a power of 99% to discover a similar association to that seen in CRC. Using a more conservative OR of 1.4 in the same calculation indicated a power of 85%. Association statistics from individual GWAS's were entered into PLINK 1.9 for a fixed-effects meta-analysis. *P*-threshold for candidate significance was 0.05. Standard Bonferroni methods were used to correct *P*-threshold for multiple testing. Confidence intervals are set at 95%.

TCGA-UCEC analysis

TCGA-UCEC methylation, gene expression data and MSI status were downloaded from the GDC portal (<https://portal.gdc.cancer.gov/>) using the GDC toolkit. The rs1800734 genotype was extracted from TCGA-

UCEC whole genome sequencing sliced BAM files using Platypus variant calling software [24]. Data was downloaded, collated and pre-analysed using a custom script available on GitHub (https://github.com/kzkedziarska/mlh1_endo). For *MLH1* promoter methylation, the beta median methylation level for CpG residues proximal (± 2000 bp) to rs1800734 was calculated. *MLH1* transcript fragments per kilobase per million mapped reads upper quartile (FPKM-UQ) was used as a measure of expression. Samples with any missing values were excluded before data visualization and statistical analysis in R (MSI $n = 206$; MSS $n = 349$).

Cell lines

HEC1A and NOU1 cells were maintained in Dulbecco's modified eagle medium (Gibco™), 10% FBS, 0.1% penicillin-streptomycin. rs1800734 was genotyped using KASPAR™ technology (LGC) according to the manufacturer's instructions using specific primers (Supplementary table 5).

Analysis of methylation

DNA was extracted from fresh cells using the DNeasy kit (QIAGEN). Bisulphite conversion of DNA was carried out using the EZ DNA methylation kit (Zymo Research) according to the manufacturer's instructions. Converted DNA was amplified with Pyromark PCR kit (Qiagen) using CpG free primers (Supplementary table 5) with Illumina-specific sequence tags to ensure unbiased amplification of methylated and unmethylated template. Amplicons from each sample were barcoded together using a custom set of index tags and primers [32]. Sequencing was carried out using a 250-bp paired end kit on a MiSeq (Illumina) according to the manufacturer's instructions. MiSeq output was demultiplexed and FASTQ files generated (Basespace, Illumina). The sequences were quality assessed and trimmed (FastQC and TrimGalore, Babraham Bioinformatics) then aligned and the methylation called by rs1800734 allele (Bismark, Babraham Bioinformatics).

Analysis of mRNA

RNA was extracted from fresh cells using the RNeasy kit (QIAGEN) and cDNA was generated (High Capacity cDNA Reverse Transcription Kit, Applied Biosystems) according to the manufacturer's instructions. Gene expression was quantified and normalized using Taqman gene expression ready mixed assays (Applied Biosystems, Thermofisher). Allele-specific *MLH1* expression was assessed by amplification of cDNA using Illumina tagged primers (Supplementary table 5) followed by NGS sequencing on a MiSeq (Illumina) as above. Trimmed FastQ sequences were aligned using bwa-mem and the rs1800734 variant called by Platypus [33].

Chromatin Immunoprecipitation

Approximately 10^8 cells were crosslinked for 10 min with 1% formaldehyde, neutralized with 125 mM glycine, washed with ice-cold PBS and scraped. After 2 further PBS washes, cells were resuspended in lysis buffer, (1% SDS, 10 mM EDTA, 50 mM Tris-HCl, protease inhibitors) sonicated using a Bioruptor (Diagenode) for 7-15 x 15 s cycles, centrifuged at max speed for 10 min at 4 °C and diluted 1:10 in IP dilution buffer (1% triton-100, 2 mM EDTA, 150 mM NaCl, 20 mM Tris). Immunoprecipitation (IP) with 5 µg of antibody (anti-TFAP4 Santa Cruz Biotechnology, sc-18593X) was carried out overnight at 4 °C and then incubated for 4 h with 50 µl of protein G Dynabeads (Invitrogen). For each chromatin sample, a mock IP with no antibody was carried out in parallel with the TFAP4 IP, and for all subsequent steps of the assay, as a negative control. Bead/antibody and mock complexes were washed with TSEI (0.1% SDS, 1% TritonX-100, 2 mM EDTA, 20 mM Tris, 150 mM NaCl), TSEII (0.1% SDS, 1% TritonX-100, 2 mM EDTA, 20 mM Tris, 500 mM NaCl), LiCl buffer (0.25LiCl, 1% NP-40, 1% deoxycholate, 1 mM EDTA, 10 mM Tris-HCl) and TE according to standard protocols and eluted with 1% SDS, 0.1 M NaHCO₃. One microliter of DNA was analysed in duplicate or triplicate by SYBR green qPCR using PowerUp SYBR™ Green Master Mix (Thermo-fisher) and primers covering the *MLH1* promoter region (Supplementary Table 6). The results were calculated with the $\Delta\Delta CT$ method using Ct values from the input chromatin to normalize (ΔCT) and then expressed relative to a primer set outside the TFAP4 binding site ($\Delta\Delta Ct$) and the relative fold change calculated using the equation $2^{-\Delta\Delta Ct}$. No amplification was observed from DNA extracted from the mock IPs.

5-Aza-2'-deoxycytidine treatment

Adherent semiconfluent MSI NOU1 cells in exponential growth were treated with 5µM 5-Aza-2'-deoxycytidine in standard medium (AzaC, Sigma A3656) for 48 h (with replenishment of AzaC after 24 h). AzaC was removed and cells washed with PBS and then cultured in standard medium for 0, 4, 7 and 11 days. RNA and DNA were extracted simultaneously using the AllPrep kit (Qiagen) and *MLH1* mRNA expression and promoter methylation assessed as described above. ChIP was carried out post AzaC treatment as described above.

Plots and statistics

R software and associated packages (tidyverse, gridExtra, ggplot2, ggsci, dylpr and ggforce) were used to generate all graphs and carry out statistical tests including ANOVA, Tukey, Kruskal-Wallis, paired Wilcoxon, *t* test and Pearson's. Power calculations were carried out using the genpwr package

Supplementary information

Supplementary information accompanies this paper at <https://doi.org/10.1186/s13148-020-00889-3>.

Additional file 1: Supplementary figure 1. A Boxplot of the proportion of methylation proximal to the *MLH1* promoter and *MLH1* gene expression in EC patient samples (TCGA-UCEC) stratified by rs1800734 genotype and MSI with high *MLH1* methylation (median Beta >0.2) and MSS status. Supplementary figure 2: *MLH1* expression of MSI samples inversely correlates with promoter methylation. Supplementary figure 3: In HEC1A cells TFAP4 binds preferentially to the rs1800734 G allele. Supplementary table 1: Sample numbers and minor allele frequency for rs1800734 for each data set. Supplementary table 4: Statistical test p-values on genotype vs methylation and genotype vs expression associations in TCGA-UEAC sample subsets. Supplementary table 5: Primers used for genotyping, amplicon bisulphite sequencing and cDNA amplification. Supplementary table 6: Primers used for Q-PCR (SYBR) amplification of ChIP DNA.

Additional file 2: Supplementary figure 2. Results of meta-analysis of all MSI cases versus controls (from ANECS – Illumina genotyped, ANECS – iCOGS genotyped, RENDOCAS, MCCS; MSI $n = 225$, controls $n = 13,582$) showing association statistics for all SNPs in the *MLH1* promoter region (chr3:36,000,000-38,000,000 hg38; chr3:36024996-38024996 hg19) and in silico predicted transcription factor binding sites (SNP2TFBS).

Additional file 3: Supplementary figure 3. Results of meta-analysis of cases with loss of *MLH1*/*PMS2* protein expression only versus controls (from ANECS – Illumina genotyped, ANECS – iCOGS genotyped, RENDOCAS, MCCS; *MLH1* loss cases $n = 157$, controls $n = 13,582$) showing association statistics for all SNPs in the *MLH1* promoter region (chr3:36,000,000-38,000,000 hg38; chr3:36024996-38024996 hg19).

Abbreviations

ANECS: Australian National Endometrial Cancer Studies; CIMP: CpG island methylator phenotype; CRC: Colorectal cancer; EC: Endometrial cancer; eQTL: Expression quantitative trait locus; GTEx: Genotype-tissue expression project; MAF: Minor allele frequency; MCCS: Melbourne Collaborative Cohort Study; meQTL: Methylation quantitative trait locus; *MLH1*: MutL homologue 1; MMR: Mismatch repair; MSH2: MutS homologue 2; MSH6: MutS homologue 6; MSI: Microsatellite instability; MSS: Microsatellite stable; *PMS2*: *PMS1* homologue 2; RENDOCAS: Registry of Endometrial Cancer in Sweden; SNP: Single nucleotide polymorphism; TCGA: The cancer genome atlas; TFAP4: Transcription factor AP4

Acknowledgements

We thank M. Brown for help with EC cell lines and M. Glaire for help with TCGA analysis.

Authors' contributions

A.L. and I.T. conceived the study. T.O'M. coordinated genotyping and associated data on all sample sets. Individual studies were led by D.D.B. (MCCS, ANECS MMR), A.S. (ANECS), E.T., M.M. and A.K. (RENDOCAS) with additional analysis by G.G. and M.S., H.R. and A.L. carried out *MLH1* SNP association analyses, H.R. K.K. and A.L. carried out TCGA analyses, and H.R. and R.T. carried out cell line studies. T.O'M., D.C., R.M. and I.T. provided resources and expertise. A.L., T.O'M. and H.R. wrote the manuscript. All authors critically reviewed the manuscript content. All authors read and approved the final manuscript.

Funding

Funding for this project, AL and RT was provided by a Medical Research Council New Investigator Research Grant (MR/P000738/1). Core funding to the Wellcome Centre for Human Genetics was provided by the Wellcome Trust (090532/Z/09/Z). TAO'M is supported by a National Health and Medical Research Council (NHMRC) Early Career Fellowship (APP1111246). DNC is funded by a Cancer Research UK Advanced Clinician Scientist Fellowship and was previously supported by a Health Foundation/Academy of Medical Sciences Clinician Scientist Fellowship (C26642/A27963). ABS is supported by an NHMRC Senior Research Fellowship (APP1061779). DDB is supported by an NHMRC Career Development Fellowship (GNT1125268). GWAS and iCOGS

genotyping was supported by NHMRC Project Grants (#ID1031333, ID#552402 and ID#1031333). ET is supported by grants provided by Region Stockholm (ALF project). The views expressed are those of the authors and not necessarily those of the NHS, the NIHR, the Department of Health or the Wellcome Trust.

Availability of data and materials

The datasets used and analysed during the current study are available from the corresponding author on reasonable request.

Ethics approval and consent to participate

ANECs: The study was approved by the QIMR Berghofer Medical Research Institute Human Research Ethics Committee and the participating hospitals and cancer registries. All participants provided informed written consent. RENDOCAS: The study was approved by the Regional Ethical Review Authority in Stockholm, Sweden. The original registration number was 2010/1536-31/2 with additions 2014/1294-32 and 2014/1325-32. All patients provided written informed consent. MCCS: All MCCS participants gave informed consent and the study was approved by the Cancer Council Victoria Human Research Ethics Committee.

Consent for publication

Not applicable

Competing interests

DDB served as a consultant on the Tumour Agnostic (dMMR) Advisory Board of Merck Sharp and Dohme in 2017 and 2018 for Pembrolizumab. The other authors declare that they have no competing interests

Author details

¹Cancer Gene Regulation Group, Wellcome Trust Centre for Human Genetics, University of Oxford, Roosevelt Drive, Oxford OX3 7BN, UK. ²Cancer Genomics and Immunology Group, Wellcome Trust Centre for Human Genetics, University of Oxford, Roosevelt Drive, Oxford OX3 7BN, UK. ³Colorectal Oncogenomics Group, Department of Clinical Pathology, The University of Melbourne, Melbourne, Victoria 3010, Australia. ⁴Genomic Medicine and Family Cancer Clinic, Royal Melbourne Hospital, Parkville, Victoria 3010, Australia. ⁵University of Melbourne Centre for Cancer Research, Victorian Comprehensive Cancer Centre, Parkville, Victoria 3010, Australia. ⁶Department of Molecular Medicine and Surgery, Karolinska Institutet, Stockholm, Sweden. ⁷Department of Clinical Genetics, Karolinska University Hospital, Stockholm, Sweden. ⁸Department of Women's and Children's Health, Karolinska Institutet, Stockholm, Sweden. ⁹Department of Laboratory Medicine, Division of Pathology, Karolinska Institutet, Karolinska University Hospital, Stockholm, Sweden. ¹⁰Centre for Epidemiology and Biostatistics, Melbourne School of Population and Global Health, The University of Melbourne, Melbourne, Victoria 3010, Australia. ¹¹Cancer Epidemiology Division, Cancer Council Victoria, Melbourne, Victoria 3004, Australia. ¹²Precision Medicine, School of Clinical Sciences at Monash Health, Monash University, Clayton, Victoria 3168, Australia. ¹³Cancer Genetics and Evolution Laboratory, Cancer Research UK Edinburgh Centre, MRC Institute of Genetics & Molecular Medicine, The University of Edinburgh, Western General Hospital, Crewe Road South, Edinburgh EH4 2XR, UK. ¹⁴Department of Genetics and Computational Biology, QIMR Berghofer Medical Research Institute, QLD, Brisbane 4006, Australia. ¹⁵Division of Biosciences, Department of Life Sciences, College of Health and Life Sciences, Brunel University, Kingston Lane, Uxbridge UB8 3PH, UK.

Received: 25 March 2020 Accepted: 23 June 2020

Published online: 08 July 2020

References

- Cosgrove CM, Cohn DE, Hampel H, Frankel WL, Jones D, McElroy JP, et al. Epigenetic silencing of MLH1 in endometrial cancers is associated with larger tumor volume, increased rate of lymph node positivity and reduced recurrence-free survival. *Gynecol Oncol*. 2017;146(3):588–95.
- Peltomaki P. Role of DNA mismatch repair defects in the pathogenesis of human cancer. *J Clin Oncol*. 2003;21(6):1174–9.
- Popat S, Hubner R, Houlston RS. Systematic review of microsatellite instability and colorectal cancer prognosis. *J Clin Oncol*. 2005;23(3):609–18.
- Boland CR, Goel A. Microsatellite instability in colorectal cancer. *Gastroenterology*. 2010;138(6):2073–87 e3.
- Le DT, Uram JN, Wang H, Bartlett BR, Kemberling H, Eyring AD, et al. PD-1 Blockade in tumors with mismatch-repair deficiency. *N Engl J Med*. 2015;372(26):2509–20.
- Tougeron D, Fauquembergue E, Rouquette A, Le Pessot F, Sesboue R, Laurent M, et al. Tumor-infiltrating lymphocytes in colorectal cancers with microsatellite instability are correlated with the number and spectrum of frameshift mutations. *Mod Pathol*. 2009;22(9):1186–95.
- Diaz-Padilla I, Romero N, Amir E, Matias-Guiu X, Vilar E, Muggia F, et al. Mismatch repair status and clinical outcome in endometrial cancer: a systematic review and meta-analysis. *Crit Rev Oncol Hematol*. 2013;88(1):154–67.
- Shikama A, Minaguchi T, Matsumoto K, Akiyama-Abe A, Nakamura Y, Michikami H, et al. Clinicopathologic implications of DNA mismatch repair status in endometrial carcinomas. *Gynecol Oncol*. 2016;140(2):226–33.
- Ruiz I, Martin-Aruti M, Lopez-Lopez E, Garcia-Orad A. Lack of association between deficient mismatch repair expression and outcome in endometrial carcinomas of the endometrioid type. *Gynecol Oncol*. 2014;134(1):20–3.
- McMeekin DS, Trichtler DL, Cohn DE, Mutch DG, Lankes HA, Geller MA, et al. Clinicopathologic significance of mismatch repair defects in endometrial cancer: an NRG Oncology/Gynecologic Oncology Group Study. *J Clin Oncol*. 2016;34(25):3062–8.
- Nebot-Bral L, Brandao D, Verlingue L, Rouleau E, Caron O, Despras E, et al. Hypermutated tumours in the era of immunotherapy: the paradigm of personalised medicine. *Eur J Cancer*. 2017;84:290–303.
- Jones PA, Laird PW. Cancer epigenetics comes of age. *Nat Genet*. 1999;21(2):163–7.
- Allan JM, Shorto J, Adlard J, Bury J, Coggins R, George R, et al. MLH1-93G>A promoter polymorphism and risk of mismatch repair deficient colorectal cancer. *Int J Cancer*. 2008;123(10):2456–9.
- Campbell PT, Curtin K, Ulrich CM, Samowitz WS, Bigler J, Velicer CM, et al. Mismatch repair polymorphisms and risk of colon cancer, tumour microsatellite instability and interactions with lifestyle factors. *Gut*. 2009;58(5):661–7.
- Savio AJ, Mrkonjic M, Lemire M, Gallinger S, Knight JA, Bapat B. The dynamic DNA methylation landscape of the mutL homolog 1 shore is altered by MLH1-93G>A polymorphism in normal tissues and colorectal cancer. *Clin Epigenetics*. 2017;9:26.
- Thomas R, Trapani D, Goodyer-Sait L, Tomkova M, Fernandez-Rozadilla C, Sahnane N, et al. The polymorphic variant rs1800734 influences methylation acquisition and allele-specific TFAP4 binding in the MLH1 promoter leading to differential mRNA expression. *Sci Rep*. 2019;9(1):13463.
- Whiffin N, Broderick P, Lubbe SJ, Pittman AM, Penegar S, Chandler I, et al. MLH1-93G > A is a risk factor for MSI colorectal cancer. *Carcinogenesis*. 2011;32(8):1157–61.
- Liu NQ, Ter Huurne M, Nguyen LN, Peng T, Wang SY, Studd JB, et al. The non-coding variant rs1800734 enhances DLCK3 expression through long-range interaction and promotes colorectal cancer progression. *Nat Commun*. 2017;8:14418.
- Savio AJ, Bapat B. Modulation of transcription factor binding and epigenetic regulation of the MLH1 CpG island and shore by polymorphism rs1800734 in colorectal cancer. *Epigenetics*. 2017;12(6):441–8.
- Cheng TH, Thompson DJ, O'Mara TA, Painter JN, Glubb DM, Flach S, et al. Five endometrial cancer risk loci identified through genome-wide association analysis. *Nat Genet*. 2016;48(6):667–74.
- O'Mara TA, Glubb DM, Amant F, Annibaldi D, Ashton K, Attia J, et al. Identification of nine new susceptibility loci for endometrial cancer. *Nat Commun*. 2018;9(1):3166.
- Herman JG, Umar A, Polyak K, Graff JR, Ahuja N, Issa JP, et al. Incidence and functional consequences of hMLH1 promoter hypermethylation in colorectal carcinoma. *Proc Natl Acad Sci U S A*. 1998;95(12):6870–5.
- Weisenberger DJ, Siegmund KD, Campan M, Young J, Long TI, Faas MA, et al. CpG island methylator phenotype underlies sporadic microsatellite instability and is tightly associated with BRAF mutation in colorectal cancer. *Nat Genet*. 2006;38(7):787–93.
- Fang M, Ou J, Hutchinson L, Green MR. The BRAF oncoprotein functions through the transcriptional repressor MAFG to mediate the CpG island methylator phenotype. *Mol Cell*. 2014;55(6):904–15.
- Metcalfe AM, Spurdle AB. Endometrial tumour BRAF mutations and MLH1 promoter methylation as predictors of germline mismatch repair gene mutation status: a literature review. *Fam Cancer*. 2014;13(1):1–12.

26. Guinney J, Dienstmann R, Wang X, de Reynies A, Schlicker A, Sonesson C, et al. The consensus molecular subtypes of colorectal cancer. *Nat Med*. 2015;21(11):1350–6.
27. Buchanan DD, Tan YY, Walsh MD, Clendenning M, Metcalf AM, Ferguson K, et al. Tumor mismatch repair immunohistochemistry and DNA MLH1 methylation testing of patients with endometrial cancer diagnosed at age younger than 60 years optimizes triage for population-level germline mismatch repair gene mutation testing. *J Clin Oncol*. 2014;32(2):90–100.
28. Keranen A, Ghazi S, Carlson J, Papadogiannakis N, Lagerstedt-Robinson K, Lindblom A. Testing strategies to reduce morbidity and mortality from Lynch syndrome. *Scand J Gastroenterol*. 2018;53(12):1535–40.
29. Walsh MD, Buchanan DD, Cummings MC, Pearson SA, Arnold ST, Clendenning M, et al. Lynch syndrome-associated breast cancers: clinicopathologic characteristics of a case series from the colon cancer family registry. *Clin Cancer Res*. 2010;16(7):2214–24.
30. Walsh MD, Cummings MC, Buchanan DD, Dambacher WM, Arnold S, McKeone D, et al. Molecular, pathologic, and clinical features of early-onset endometrial cancer: identifying presumptive Lynch syndrome patients. *Clin Cancer Res*. 2008;14(6):1692–700.
31. O'Mara TA, Glubb DM, Painter JN, Cheng T, Dennis J, Australian National Endometrial Cancer Study G, et al. Comprehensive genetic assessment of the ESR1 locus identifies a risk region for endometrial cancer. *Endocr Relat Cancer*. 2015;22(5):851–61.
32. Lambale S, Batty E, Attar M, Buck D, Bowden R, Lunter G, et al. Improved workflows for high throughput library preparation using the transposome-based Nextera system. *BMC Biotechnol*. 2013;13:104.
33. Rimmer A, Phan H, Mathieson I, Iqbal Z, Twigg SRF, Consortium WGS, et al. Integrating mapping-, assembly- and haplotype-based approaches for calling variants in clinical sequencing applications. *Nat Genet*. 2014;46(8):912–8.

Publisher's Note

Springer Nature remains neutral with regard to jurisdictional claims in published maps and institutional affiliations.

Ready to submit your research? Choose BMC and benefit from:

- fast, convenient online submission
- thorough peer review by experienced researchers in your field
- rapid publication on acceptance
- support for research data, including large and complex data types
- gold Open Access which fosters wider collaboration and increased citations
- maximum visibility for your research: over 100M website views per year

At BMC, research is always in progress.

Learn more biomedcentral.com/submissions

