

# Primary Central Nervous System Methotrexate-associated Lymphoproliferative Disorder in a Patient with Rheumatoid Arthritis: Case Report and Review of Literature

Atsuhito Uneda,<sup>1,2</sup> Koji Hirashita,<sup>1</sup> Takahiro Kanda,<sup>1</sup> Masatoshi Yunoki,<sup>1</sup> Kimihiro Yoshino,<sup>1</sup> Kazuhiko Kurozumi,<sup>2</sup> and Isao Date<sup>2</sup>

Methotrexate (MTX) is an immunosuppressor that is widely used to treat autoimmune diseases, including rheumatoid arthritis (RA). However, it can have serious adverse effects including a lymphoma: MTX-associated lymphoproliferative disorder (MTX-LPD). Extranodal lesions are common in MTX-LPD patients. However, MTX-LPD in the central nervous system (CNS) is extremely rare with few reported cases. Here, we describe a case of primary CNS MTX-LPD in a patient with RA, with a review of the literature. A 68-year-old woman who had received MTX for her RA for more than 10 years was referred to our hospital. Head magnetic resonance imaging (MRI) showed multiple lesions with heterogeneous contrast enhancement scattered throughout both hemispheres. As immunosuppression caused by MTX was suspected, MTX was discontinued, based on a working diagnosis of MTX-LPD. We performed an open biopsy of her right temporal lesion. Histopathologic examination showed atypical CD20+ lymphoid cells, leading to a definitive diagnosis of diffuse large B-cell lymphoma (DLBCL). *In situ* hybridization of an Epstein-Barr virus-encoded small RNA (EBER) was positive. Sanger sequencing confirmed that both *MYD88* L265 and *CD79B* Y196 mutations were absent. The LPD regressed after stopping MTX. Follow-up head MRI at 8 months after surgery showed no evidence of recurrence. Although primary CNS MTX-LPD is extremely rare, it should be included in the differential diagnosis when a patient receiving MTX develops CNS lesions. Diagnosis by biopsy and MTX discontinuation are required as soon as possible.

**Keywords:** *CD79B*, Methotrexate, MTX-associated LPD, *MYD88*, Primary central nervous system lymphoma

## Introduction

Methotrexate (MTX) is an effective immunosuppressant that is widely used as a standard therapy for rheumatoid arthritis (RA).<sup>1)</sup> Among its various adverse effects, lymphoma was

reported for the first time in 1991 in a patient with RA who was taking weekly low-dose MTX.<sup>2)</sup> Since that time, lymphoproliferative disorder (LPD) as a result of immunosuppression caused by MTX (MTX-associated LPD; MTX-LPD) has been attracting attention.<sup>3)</sup> MTX-LPDs are categorized as “other iatrogenic immunodeficiency-associated LPDs” in the World Health Organization’s classification.<sup>4)</sup> Characteristically, MTX-LPD can regress spontaneously after stopping MTX.<sup>3,5)</sup> This suggests that the tumor cells proliferate because of MTX-induced immunosuppression. Additionally, MTX-LPD may be associated with Epstein-Barr virus (EBV); 30%–50% of patients with MTX-LPD are reportedly EBV+.<sup>3)</sup> Extranodal lesions are found in 40%–50% of MTX-LPD patients,<sup>3)</sup> commonly at the gastrointestinal tract, skin, liver, and lungs.<sup>3,5,6)</sup> However, MTX-LPD in the central nervous system (CNS) is extremely rare, with few reported cases.<sup>7–15)</sup> Here, we describe a rare case of primary CNS MTX-LPD in a patient with RA, and review the literature.

## Case Report

### *Clinical history and presentation*

A 68-year-old woman with a 2-day history of motor aphasia and right hemiparesis was referred to our hospital because of CNS lesions. She had been receiving MTX (8 mg/week) for her RA for more than 10 years.

Laboratory data showed a normal white blood cell count (8000/ $\mu$ L). Her serum soluble interleukin (IL)-2 receptor was slightly elevated (542 U/mL; normal: 145–519 U/mL). Her levels of serum lactate dehydrogenase level (189 IU/L; normal: 106–211 IU/L), C-reactive protein (0.2 mg/dL; normal: < 0.6 mg/dL) and serum  $\beta$ 2-microglobulin (1.5 mg/L; normal: 0.9–1.9 mg/L) were normal. Serological tests for human immunodeficiency virus, human T-cell lymphotropic virus type 1, and cytomegalovirus were negative. EBV antibody showed a pattern indicative of previous infection (EB-VCA-IgG, 640 titer; EBV-VCA-IgM, negative; anti-EBNA, 40 titer). The cerebrospinal fluid protein content was slightly elevated at 46 mg/dL, but the cell count was normal.

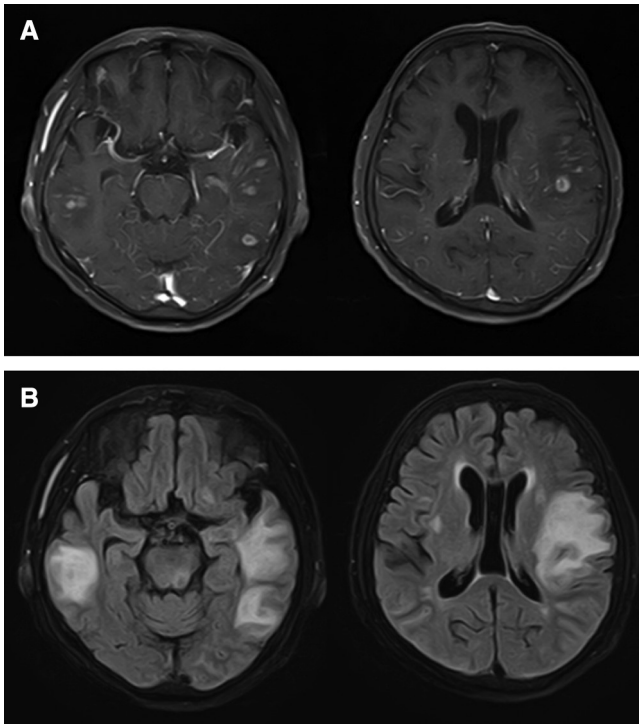
Head magnetic resonance imaging (MRI) showed multiple lesions scattered throughout both hemispheres with heterogeneous contrast enhancement on gadolinium contrast-enhanced T1-weighted images and peritumoral edema on fluid attenuation inversion recovery images (Fig. 1A and 1B). Whole-body computed tomography (CT) showed no apparent lymphadenopathies or other lesions suggestive of malignancy. The imaging-based differential

<sup>1</sup>Department of Neurosurgery, Kagawa Rosai Hospital, Marugame, Kagawa, Japan

<sup>2</sup>Department of Neurological Surgery, Okayama University Graduate School of Medicine, Dentistry, and Pharmaceutical Sciences, Okayama, Okayama, Japan

Received: November 1, 2019; Accepted: December 24, 2019  
Online June 26, 2020

Copyright© 2020 by The Japan Neurosurgical Society  
This work is licensed under a Creative Commons Attribution-NonCommercial-NoDerivatives International License.



**Fig. 1** (A) Preoperative gadolinium-enhanced T1-weighted head magnetic resonance images shows multiple lesions with heterogeneous contrast enhancement. (B) Fluid attenuation inversion recovery images show surrounding high-intensity area.

diagnoses were metastasis, malignant lymphoma, or glioma.

Immunosuppression caused by MTX was also suspected and MTX was discontinued, based on a working diagnosis of MTX-LPD. However, on Day 4 after admission, the patient's right hemiparesis worsened; a head CT showed expanded peritumoral edema. Therefore, we performed an open biopsy of the right temporal lesion for a definitive diagnosis on Day 9 after admission and initiated steroid therapy.

#### *Pathological and molecular findings*

Microscopic histopathologic examination of the tumor specimen showed proliferation of atypical lymphoid cells (hematoxylin and eosin; Fig. 2A). These atypical lymphoid cells were CD20<sup>+</sup> (Fig. 2B). *In situ* hybridization of an Epstein-Barr virus-encoded small RNA (EBER) was positive (Figs. 2C and 2D). A definitive diagnosis of diffuse large B-cell lymphoma (DLBCL) was established.

To detect *MYD88* L265 and *CD79B* Y196 mutations, which are frequent mutations in primary CNS lymphoma (PCNSL), genomic DNA was extracted from formalin-fixed and paraffin-embedded specimens using a QIAamp DNA FFPE Tissue Kit (Qiagen, Hilden, Germany) and amplified by polymerase chain reaction. We used the following primer sequences: *MYD88* L265: forward primer, 5'-GGGATG-GCTGTTGTTAACCCCT-3' and reverse primer, 5'-GGTG-TAGTCGCAGACAGTGAT-3'.<sup>16)</sup> *CD79B* Y196: forward primer, 5'-TCTTGCAGAATGCACCTCAC-3' and reverse

primer, 5'-GCAGCGTCACTATGTCCTCA-3'.<sup>17)</sup> The polymerase chain reaction products were then sequenced on a 3130x1 genetic analyzer (Applied Biosystems, Foster City, CA, USA) with a Big Dye Terminator v1.1 Cycle Sequencing Kit (Applied Biosystems), in accordance with the manufacturer's instructions. Sanger sequencing confirmed that both *MYD88* L265 and *CD79B* Y196 mutations were absent (Figs. 3A and 3B).

#### *Clinical outcome*

The patient's postoperative course was uneventful and her neurological symptoms gradually improved. Three weeks after withdrawing MTX, a head MRI showed decreased high-intensity areas on fluid attenuation inversion recovery images and multiple contrast-enhanced lesions on gadolinium contrast-enhanced T1-weighted images. She was discharged without neurological symptoms, and her RA has remained stable with low-dose corticosteroids. A follow-up head MRI at 8 months after surgery showed no evidence of recurrence (Figs. 4A and 4B).

#### **Discussion**

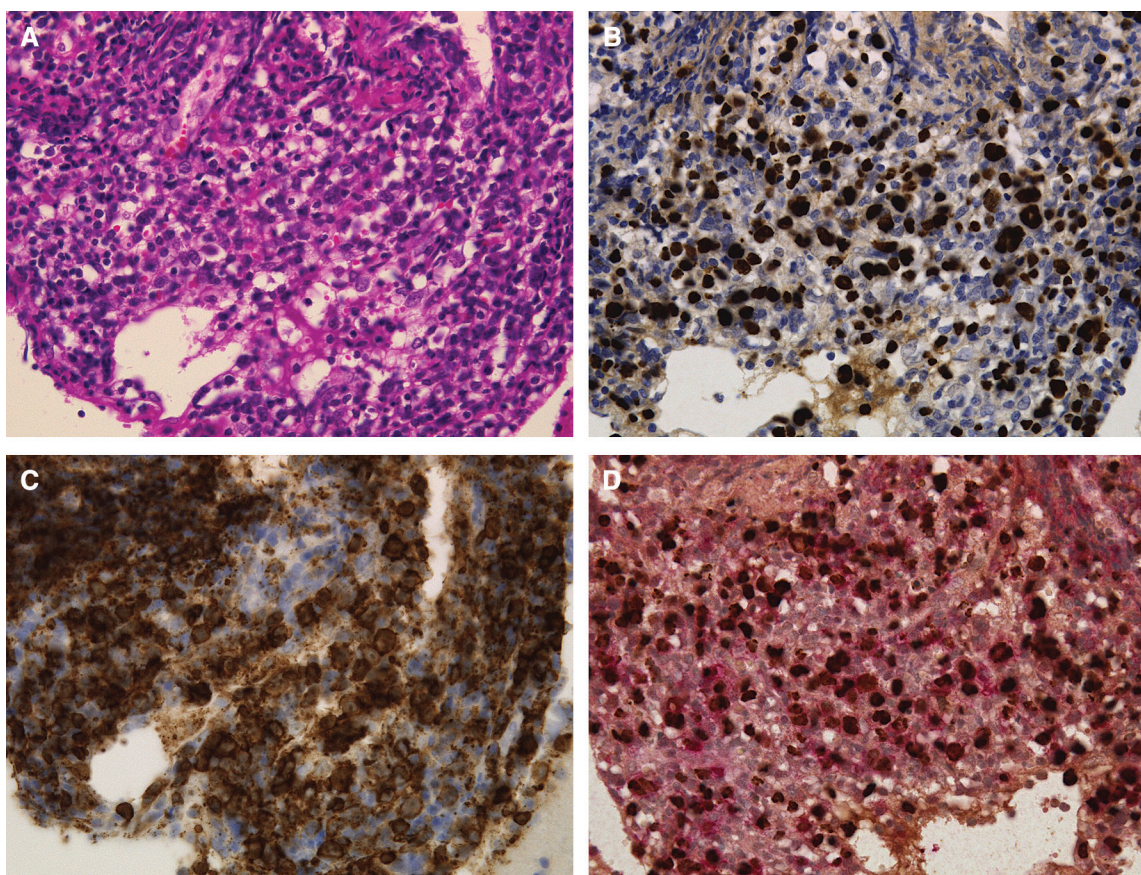
Here, we report a rare case of primary CNS MTX-LPD in a patient with RA, in whom DLBCL was definitively diagnosed by an open biopsy. The patient's disease course was typical for EBV<sup>+</sup> MTX-LPD. Her LPD spontaneously regressed after MTX cessation.

#### *Characteristics of primary CNS MTX-LPD*

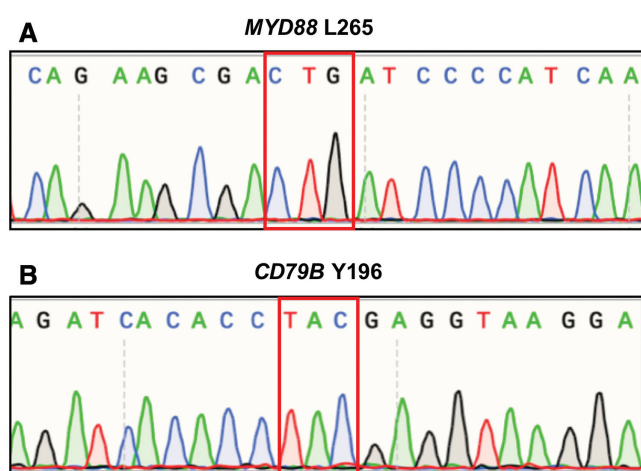
In a literature search, we found nine cases of primary CNS MTX-LPD, which are summarized with the present case in Table 1.<sup>7-15)</sup> The primary disease was RA in all 10 patients. The affected primary CNS MTX-LPD sites were the cerebrum (8/10), medulla (1/10), and dura (1/10). Of the eight cases of cerebral MTX-LPD, seven (including our case) presented as multiple lesions; only one case presented as a solitary lesion.<sup>7,8,10,11,13-15)</sup> One case with medullary LPD presented with a solitary mass,<sup>9)</sup> and a case with hypertrophy of the dura mater presented as intravascular large B-cell lymphoma (IVLBCL).<sup>12)</sup>

The age range at diagnosis of primary CNS MTX-LPD was 50–78 years, which is similar to that reported for all MTX-LPDs, including other sites (all-site; median: 67 years, range: 34–87 years).<sup>3)</sup> Although most primary CNS MTX-LPD occurred in women, as reported for all-site MTX-LPDs, the ratio of women to men for primary CNS MTX-LPD is higher than for all-site MTX-LPDs (9:1 vs 2:1).<sup>3)</sup>

The median dose of MTX treatment in primary CNS MTX-LPD is 8 mg/week (range: 6–16 mg/week); and the median duration of MTX treatment until primary CNS MTX-LPD diagnosis is 4 years (range, 1 year to >10 years). These values are similar to those for all-site MTX-LPD cases (8.4 [range, 5.9–10.0] mg/week, 4–6 years).<sup>3,18,19)</sup> A higher MTX dose is associated with LPD development in RA patients. Other immune suppressors, such as adalimumab, bucillamine, etanercept, and prednisolone, were used in four primary CNS MTX-LPD cases.<sup>9,11,12,14)</sup>



**Fig. 2** (A) Hematoxylin and eosin staining shows proliferation of medium-sized atypical lymphoid cells ( $\times 400$ ). (B) Atypical lymphoid cells were positive for CD20 ( $\times 400$ ). (C) *In situ* hybridization of an EBER was positive ( $\times 400$ ). (D) Atypical lymphoid cells were doubly positive for double staining for CD20 and EBER ( $\times 400$ ). EBER: Epstein-Barr virus-encoded small RNA.



**Fig. 3** (A) *MYD88* L265 mutation was absent. (B) *CD79B* Y196 mutation was absent.

Neurological symptoms depend on the location of primary CNS MTX-LPD (Table 1). Patients with cerebral lesions presented with headache, dementia, dysgraphia, convulsion, speech disturbance, motor aphasia, hemiparesis, depression,

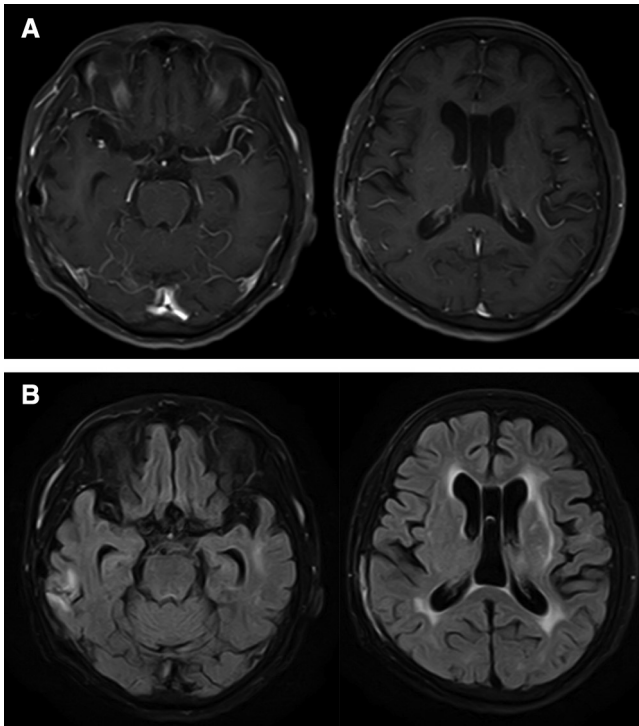
nausea, and vomiting.<sup>7,8,10,11,13–15</sup> A patient with a medullary lesion presented with nausea, vomiting, vertigo, and double vision.<sup>9</sup> A patient with hypertrophy of the dura mater presented as IVLBCL had no neurological symptoms.<sup>12</sup>

#### *Biopsy for exact diagnosis of CNS MTX-LPD*

Biopsy is an important method to determine diagnosis and treatment strategy in these patients. In the present case, we performed an open biopsy of the right temporal lesion. Biopsy sites of primary CNS MTX-LPD cases including the present case were the cerebrum (7/10), medulla (1/10), skin (1/10), and cervical lymph node (1/8; Table 1). In two cases (Cases 5 and 6), cervical lymph node or skin were biopsied rather than the CNS lesion<sup>11,12</sup>; the authors concluded that the CNS lesions and biopsy sites were from the same origins, because after stopping MTX, these lesions regressed.

#### *Histopathology of CNS MTX-LPD*

Several histologic patterns were reported in CNS MTX-LPD, with DLBCL as the most common (4/10); polymorphic/lymphoplasmacytic lymphoproliferative disorder (P/L LPD; 1/10), peripheral T-cell lymphoma, not otherwise specified (PTCL-NOS; 1/10), Hodgkin's lymphoma-like lymphoproliferative disorder (HL LPD; 1/10),



**Fig. 4** (A) Follow-up gadolinium contrast-enhanced T1-weighted magnetic resonance images and (B) fluid attenuation inversion recovery images at 8 months after surgery show no evidence of recurrence.

and non-classifiable patterns (3/10) were also reported. These results are similar to those for all-site MTX-LPDs, in which DLBCL was the most common histologic patterns (35–50%), followed by Hodgkin lymphoma (10–30%).<sup>4,18,20</sup>

#### *Genomic alterations in CNS MTX-LPD and PCNSL*

In our patient, both *MYD88* L265 and *CD79B* Y196 mutations were absent. MTX-LPD is presumed to have a distinct molecular profile compared with PCNSL; however, to date, genomic alterations in MTX-LPD, including CNS MTX-LPD, remain unconfirmed because of the rarity of the disease. In PCNSL, B-cell receptor/nuclear factor- $\kappa$ B (NF- $\kappa$ B) signaling is the core pathway.<sup>21–23</sup> Additionally, *MYD88* L265 and *CD79B* Y196 mutations may play a key role in up-regulating NF- $\kappa$ B.<sup>21–23</sup> *MYD88* encodes a signaling adaptor protein that induces activation of NF- $\kappa$ B and the JAK/STAT3 pathway after stimulating Toll-like receptors, interferon- $\beta$  production, and IL-1/IL-18 receptors.<sup>24</sup> The *CD79B* gene encodes a B-cell antigen receptor (BCR) subunit that is essential for BCR signaling, resulting in NF- $\kappa$ B activation.<sup>24</sup> An *MYD88* L265 mutation was reported to occur in 76%–85% of patients with PCNSL, and a *CD79B* Y196 mutation has been reported in 83% of patients.<sup>22,23</sup> The prevalence of *MYD88* and *CD79B* mutations in PCNSL was considerably higher than that reported for systemic DLBCL.<sup>22,23</sup>

#### *EBER expression and regression after MTX withdrawal in CNS MTX-LPD*

EBV is an oncogenic virus associated with several malignant diseases, including Burkitt's lymphoma and

non-Hodgkin lymphoma. Although EBV<sup>+</sup> MTX-LPD cases often spontaneously regress after withdrawal of MTX, this is less common in EBV<sup>-</sup> cases.<sup>3</sup> This suggests that MTX has possible effects on the regulation of EBV gene expression, which reactivates EBV. In EBV<sup>+</sup> MTX-LPD cases, MTX activates EBV promoters and stimulates viral replication.<sup>25</sup> Then, excessive proliferation and survival of EBV-infected lymphoid cells are induced, leading to the development of LPD.<sup>25</sup> Withdrawal of MTX abrogates signals for proliferation and/or survival, leading to spontaneous regression without additional chemotherapy.<sup>25</sup> The low expression of the antiapoptotic protein, Bcl-2 protein, and the low hypermethylation of apoptosis-related genes in EBV<sup>+</sup> MTX-LPD cases may explain the rapid regression of LPD after withdrawing MTX.<sup>25</sup>

We found that 7/10 (70%) of the primary CNS MTX-LPD cases to be EBER+, which is a little higher than reported for all-site MTX-LPDs (30–50%).<sup>3,4</sup>

Withdrawal of MTX is the initial treatment for MTX-LPD. Regression of LPD after stopping MTX was reported in eight (89%) of the nine cases of primary CNS MTX-LPD including the present case, and the remaining case had no information about this point (Table 1). This rate of the spontaneous regression after MTX withdrawal only is higher than reported for all-site MTX-LPDs (25–60%).<sup>3,4,18,26</sup> All seven EBER<sup>+</sup> cases including the present case showed regression after stopping MTX, whereas the two EBER<sup>-</sup> cases (Cases 6 and 8) showed partial or no regression after stopping MTX.<sup>12,14</sup> These results are consistent with results reported for all-site MTX-LPDs; patients with spontaneous regression after MTX withdrawal had a significantly higher rate of EBV positivity (85% vs 50%).<sup>18</sup>

In some CNS MTX-LPD cases, including the present case, steroid therapy combined with MTX withdrawal was used to alleviate the symptoms.<sup>11,15</sup> Steroid therapy for PCNSL works rapidly to cause tumor regression and decrease peritumoral edema<sup>27</sup>; therefore, it is the treatment of choice for short-term palliation. However, because steroid therapy obscures the histological diagnosis of PCNSL, steroid therapy before biopsy should be avoided as much as possible.<sup>28</sup>

#### *Regrowth following regression after MTX withdrawal and additional treatments for CNS MTX-LPD*

In one EBER<sup>+</sup> case (Case 2), the lesions regrew after initially regressing when MTX was withdrawn and additional chemotherapy was performed.<sup>8</sup> The 2 EBER<sup>-</sup> patients (Cases 6 and 8) showed only partial or no regression after stopping MTX, and received additional chemotherapy.<sup>12,14</sup> In these three patients, MTX was included in additional chemotherapy regimens.<sup>8,12,14</sup> However, according to the 2016 update of the Japan College of Rheumatology recommendations for the use of MTX in patients with RA, LPD within the most recent 5 years is included in the contraindications for MTX.<sup>29</sup> Therefore, using MTX as additional LPD treatment should be avoided. In Case 3, the mass was completely resected when the biopsy was performed, and the authors suggested that perfect surgical resection contributed to non-recurrence of LPD in their case.<sup>9</sup> According to the

**Table 1** Reported cases of primary central nervous system methotrexate-associated lymphoproliferative disorder

Study	Age/ sex	MTX mg/week (yr)	Other immune suppressors	Neurological symptoms	LPD site/ properties	Biopsy site	Histopathology	EBER	Regression after MTX withdrawal	Additional LPD treatment	Outcome	Follow- up duration
1 Kleinschmidt 2008. <sup>7)</sup>	78/F	Standard dose (>10)	NA	NA	Cerebrum, multiple lesions	Cerebrum	P/L LPD	Yes	Yes	No	Died 3 mo later; multi-organ failure attributable to RA	3 mo
2 Fukushima 2013. <sup>8)</sup>	64/F	6 (4)	No	Headache, dementia	Cerebrum, multiple lesions	Cerebrum	PTCL-NOS	Yes	Yes (transient)	High-dose MTX with leucovorin rescue	Good	1 yr
3 Migita 2013. <sup>9)</sup>	53/F	8 (1)	Bucillamine, PRD	Nausea, vomiting, vertigo, double vision	Medulla, single lesion	Medulla	DLBCL	Yes	Yes	Resection of mass	Good	8 yr
4 Liu 2015. <sup>10)</sup>	58/M	10 (2)	No	Depression, nausea, vomiting	Cerebrum, multiple lesions	Cerebrum	DLBCL	No	NA	Radiotherapy	Good	1 yr
5 Shimada 2015. <sup>11)</sup>	60s/F	14 (7)	ETN, ADL, PRD	Convulsion	Cerebrum, multiple lesions	Cervical lymph node	NC (dispersed Hodgkin-like large cells with CD20 <sup>+</sup> lymphocytes)	Yes	Yes	No	Good	>1 yr
6 Kikuchi 2016. <sup>12)</sup>	50/F	8 (3)	ETN, ADL	No	Hypertrophy of frontal dura mater	Skin, subcutaneous	IVLBCL	No	Partial improvement	R-CHOP + intrathecal CT (PRD+ MTX + cytarabine)	Good	2 yr
7 Matsuda 2018. <sup>13)</sup>	76/F	NA (2)	No	Staggering gait	Cerebrum, multiple lesions	Cerebrum	NC (perivascular proliferation of CD20 <sup>+</sup> lymphoid cells)	Yes	Yes	NA	NA	NA
8 Uchida 2018. <sup>14)</sup>	52/F	8 (4)	ETN	Dementia, hemiparesis	Cerebrum, multiple lesions	Cerebrum	DLBCL	No	No	Rituxan + high-dose MTX + cytarabine, RT	Died 17 mo after onset	17 mo
9 Miyaza 2019. <sup>15)</sup>	68/F	16 (5)	No	Hemiparesis, dysgraphia, speech disturbance	Cerebrum, single lesion	Cerebrum	NC (dense proliferation of CD20 <sup>+</sup> lymphocytes with atypical nuclei in perivascular lesion)	Yes	Yes	No	Good	>3 yrs
10 Present case	68/F	8 (>10)	No	Motor aphasia, hemiparesis	Cerebrum, multiple lesions	Cerebrum	DLBCL	Yes	Yes	No	Good	8 mo

All patients' primary disease was RA. ADL: adalimumab, CT: chemotherapy, DLBCL: diffuse large B-cell lymphoma, EBER: Epstein-Barr virus-encoded small RNA, ETN: Etanercept, F: female, HL LPD: Hodgkin's lymphoma-like lymphoproliferative disorder, IVLBCL: intravascular large B-cell lymphoma, LPD: lymphoproliferative disorder, M: Male, mo: months, MTX: Methotrexate, NA: not available, NC: non-classifiable, P/L LPD: polymorphic/lymphoplasmacytic lymphoproliferative disorder, PRD: Prednisolone, PTCL-NOS: peripheral T-cell lymphoma, not otherwise specified, RA: rheumatic arthritis, R-CHOP: rituximab + cyclophosphamide + vincristine + adriamycin + prednisolone, RT: radiotherapy, yr: years.

reports of all-site MTX-LPDs, subsequent regrowth or relapse occurred in 18%–45% of patients whose MTX-LPD spontaneously regressed.<sup>3,4,18,26</sup> After spontaneous MTX-LPD regression, patients should be followed up and rigorously monitored, even when they show no sign of recurrence. If remission does not occur after stopping MTX or relapse occurs after spontaneous regression, chemotherapy or radiotherapy should be considered. However, there are no standardized chemotherapy regimens across institutions; various regimens are used to treat LPD in patients with RA. R-CHOP (rituximab, cyclophosphamide, doxorubicin, vincristine, and prednisolone) was the most frequently reported regimen, but various other regimens have been reported.<sup>29</sup> The treatment regimen should be selected in consultation with hematologists according to histopathology and the anatomical stages of LPD.<sup>29</sup>

### Treatment of RA after MTX withdrawal

According to the 2016 update of the Japan College of Rheumatology recommendations for the use of MTX in patients with RA, the treatment of RA after LPD regression should not include immunosuppressive drugs, as much as possible, and MTX rechallenge and the use of tumor necrosis factor inhibitors should be avoided.<sup>19</sup> However, withdrawing MTX in RA patients with LPD may result in enhanced RA activity and requires treatment intensification. Similar to the treatment of RA in general, corticosteroids, conventional synthetic disease-modifying antirheumatic drugs (DMARDs), and biological DMARDs have been used for such cases.<sup>25</sup> In patients with low to moderate RA activity, the use of low-dose corticosteroids is a reasonable option, but treating RA with high disease activity is a difficult challenge, clinically.<sup>25</sup>

In patients with CNS MTX-LPD, some reports have described RA treatment after MTX withdrawal. In Case 3, prednisolone plus salazosulfapyridine was used after CNS MTX-LPD resection.<sup>9</sup> However, the patient's RA disease activity was high; therefore, the authors introduced abatacept, and the patient's RA improved remarkably. In Case 9 and the present case, RA activity remained stable with low-dose corticosteroids.<sup>14</sup> Follow-up of RA activity after MTX withdrawal and adjusting the treatment according to the patient's RA activity are necessary.

### Conclusions

In conclusion, we report a rare case of primary CNS MTX-LPD in a patient with RA. Use of MTX has increased because MTX is widely used as a standard therapy for RA. Although CNS MTX-LPD is extremely rare, it should be considered in the differential diagnosis when a patient who receives MTX develops CNS lesions. An early diagnosis by biopsy and MTX discontinuation as soon as possible are required. Follow-up is necessary, even for patients who show no sign of recurrence.

### Ethical Approval

All procedures performed in studies involving human participants were in accordance with the ethical standards of the institutional and/or national research committee and with the 1964 Helsinki declaration and its later amendments or

comparable ethical standards. For this type of study, formal consent is not required.

### Informed Consent

Informed consent was obtained from the patient included in the study.

### Acknowledgment

We thank Marla Bruncker and Jane Charbonneau, DVM, from Edanz Group ([www.edanzediting.com/ac](http://www.edanzediting.com/ac)), for editing a draft of this manuscript.

### Conflicts of Interest Disclosure

The authors declare that they have no conflict of interest.

### References

- Singh JA, Saag KG, Bridges SL Jr, et al: 2015 American College of rheumatology guideline for the treatment of rheumatoid arthritis. *Arthritis Rheumatol* 68: 1–26, 2016
- Ellman MH, Hurwitz H, Thomas C, Kozloff M: Lymphoma developing in a patient with rheumatoid arthritis taking low dose weekly methotrexate. *J Rheumatol* 18: 1741–1743, 1991
- Hoshida Y, Xu JX, Fujita S, et al.: Lymphoproliferative disorders in rheumatoid arthritis: clinicopathological analysis of 76 cases in relation to methotrexate medication. *J Rheumatol* 34: 322–331, 2007
- Gaulard P, Swerdlow SH, Harris NL, Sundstrom C, Jaffe ES: Other iatrogenic immunodeficiency associated lymphoproliferative disorders. In: Swerdlow SH, Campo E, Harris NL, et al. (eds): WHO Classification of Tumours of Haematopoietic and Lymphoid Tissues. Revised 4th ed., Lyon, IARC, 462–464, 2017
- Salloum E, Cooper DL, Howe G, et al.: Spontaneous regression of lymphoproliferative disorders in patients treated with methotrexate for rheumatoid arthritis and other rheumatic diseases. *J Clin Oncol* 14: 1943–1949, 1996
- Makihara S, Kariya S, Noujima-Harada M, et al.: Methotrexate-associated lymphoproliferative disorder with multiple pulmonary nodules and bilateral cervical lymphadenopathy. *Auris Nasus Larynx* 46: 927–933, 2019
- Kleinschmidt-DeMasters BK, Damek DM, Lillehei KO, Dogan A, Giannini C: Epstein Barr virus-associated primary CNS lymphomas in elderly patients on immunosuppressive medications. *J Neuropathol Exp Neurol* 67: 1103–1111, 2008
- Fukushima M, Katayama Y, Yokose N, et al.: Primary central nervous system malignant lymphoma in a patient with rheumatoid arthritis receiving low-dose methotrexate treatment. *Br J Neurosurg* 27: 824–826, 2013
- Migita K, Miyashita T, Mijin T, et al.: Epstein-Barr virus and methotrexate-related CNS lymphoma in a patient with rheumatoid arthritis. *Mod Rheumatol* 23: 832–836, 2013
- Liu W, Xue J, Yu S, Chen Q, Li X, Yu R: Primary central nervous system lymphoma mimicking recurrent depressive disorder: a case report. *Oncol Lett* 9: 1819–1821, 2015
- Shimada H, Dobashi H, Morimoto H, et al.: Primary central nervous system lymphoma in a rheumatoid arthritis patient treated with methotrexate: a case report. *BMC Res Notes* 8: 88, 2015
- Kikuchi J, Kaneko Y, Kasahara H, et al.: Methotrexate-associated intravascular large B-cell lymphoma in a patient with rheumatoid arthritis. *Intern Med* 55: 1661–1665, 2016
- Matsuda I, Hirota S: Methotrexate-associated lymphoproliferative disorder masquerading as multiple cerebral metastases. *Br J Haematol* 180: 628, 2018
- Uchida Y, Hokkoku K, Hatanaka Y, Kikuchi Y, Tashiro H, Sonoo M: [Primary central nervous system methotrexate associated lymphoproliferative disorders in a patient with rheumatoid arthritis]. *Rinsho Shinkeigaku* 58: 485–491, 2018 (Japanese)
- Miyaza S, Matsuda R, Nakamura M, Nakagawa I, Motoyama Y, Nakase H: Intracranial methotrexate-associated lymphoproliferative disorder in rheumatoid arthritis. *World Neurosurg* 130: 138–141, 2019
- Takano S, Hattori K, Ishikawa E, et al.: MyD88 mutation in elderly predicts poor prognosis in primary central nervous system lymphoma: multi-institutional analysis. *World Neurosurg* 112: e69–e73, 2018

- 17) Kraan W, Horlings HM, van Keimpema M, et al.: High prevalence of oncogenic MYD88 and CD79B mutations in diffuse large B-cell lymphomas presenting at immune-privileged sites. *Blood Cancer J* 3: e139, 2013
- 18) Ichikawa A, Arakawa F, Kiyasu J, et al.: Methotrexate/iatrogenic lymphoproliferative disorders in rheumatoid arthritis: histology, Epstein-Barr virus, and clonality are important predictors of disease progression and regression. *Eur J Haematol* 91: 20–28, 2013
- 19) Kameda T, Dobashi H, Miyatake N, et al.: Association of higher methotrexate dose with lymphoproliferative disease onset in rheumatoid arthritis patients. *Arthritis Care Res (Hoboken)* 66: 1302–1309, 2014
- 20) Tokuhira M, Saito S, Okuyama A, et al.: Clinicopathologic investigation of methotrexate-induced lymphoproliferative disorders, with a focus on regression. *Leuk Lymphoma* 59: 1143–1152, 2018
- 21) Braggio E, Van Wier S, Ojha J, et al.: Genome-wide analysis uncovers novel recurrent alterations in primary central nervous system lymphomas. *Clin Cancer Res* 21: 3986–3994, 2015
- 22) Fukumura K, Kawazu M, Kojima S, et al.: Genomic characterization of primary central nervous system lymphoma. *Acta Neuropathol* 131: 865–875, 2016
- 23) Nakamura T, Tateishi K, Niwa T, et al.: Recurrent mutations of CD79B and MYD88 are the hallmark of primary central nervous system lymphomas. *Neuropathol Appl Neurobiol* 42: 279–290, 2016
- 24) Cai Q, Fang Y, Young KH: Primary central nervous system lymphoma: molecular pathogenesis and advances in treatment. *Transl Oncol* 12: 523–538, 2019
- 25) Harigai M: Lymphoproliferative disorders in patients with rheumatoid arthritis in the era of widespread use of methotrexate: a review of the literature and current perspective. *Mod Rheumatol* 28: 1–8, 2018
- 26) Gion Y, Iwaki N, Takata K, et al.: Clinicopathological analysis of methotrexate-associated lymphoproliferative disorders: comparison of diffuse large B-cell lymphoma and classical Hodgkin lymphoma types. *Cancer Sci* 108: 1271–1280, 2017
- 27) DeAngelis LM, Yahalom J, Heinemann MH, Cirincione C, Thaler HT, Krol G: Primary CNS lymphoma: combined treatment with chemotherapy and radiotherapy. *Neurology* 40: 80–86, 1990
- 28) Weller M: Glucocorticoid treatment of primary CNS lymphoma. *J Neurooncol* 43: 237–239, 1999
- 29) Kameda H, Fujii T, Nakajima A, et al.: Japan College of Rheumatology subcommittee on the guideline for the use of methotrexate in patients with rheumatoid arthritis: Japan College of Rheumatology guideline for the use of methotrexate in patients with rheumatoid arthritis. *Mod Rheumatol* 29: 31–40, 2019

---

Corresponding author:

Atsuhito Uneda, MD, Department of Neurological Surgery, Okayama University Graduate School of Medicine, Dentistry, and Pharmaceutical Sciences, 2-5-1 Shikata, Kita-ku, Okayama, Okayama 700-8558, Japan.

✉ uneda-oka@umin.ac.jp

