

Adult Human Glioblastomas Harbor Radial Glia-like Cells

Rong Wang, Roshan Sharma, Xiaojuan Shen, Ashley M. Laughney, Kosuke Funato, Philip J. Clark, Monika Shpokayte, Peter Morgenstern, Monalisa Navare, Yichi Xu, Shaghayegh Harbi, Ignas Masilionis, Gouri Nanjangud, Yanhong Yang, Gabriel Duran-Rehbein, Martin Hemberg, Dana Pe'er, and Viviane Tabar*

*Correspondence: tabarv@mskcc.org

<https://doi.org/10.1016/j.stemcr.2020.06.002>

(Stem Cell Reports 14, 338–350; February 11, 2020)

We identified an error in Figure 4B in the originally published version of our manuscript. The first panel, listed as a control condition, was a mislabeled image that belonged to the IL-1b condition. We have reviewed the original images and have identified that the image was mislabeled as “control” when the raw file was saved as a TIFF image. We have reviewed the quantitative data as well and corrected it accordingly. The result remains the same and does not impact any conclusions. We apologize for the error.



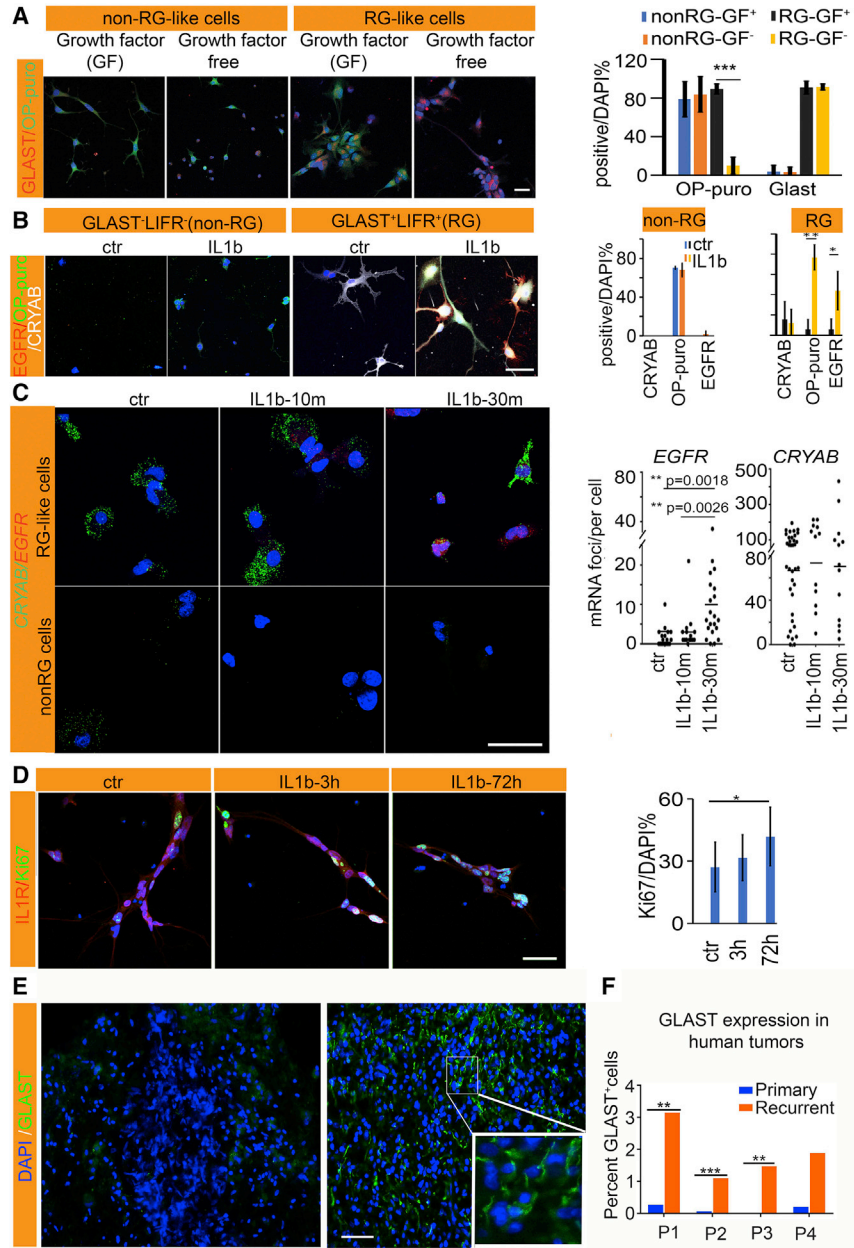


Figure 4. Inflammation Regulates Cell-Cycle States of RG-like Cells (corrected)

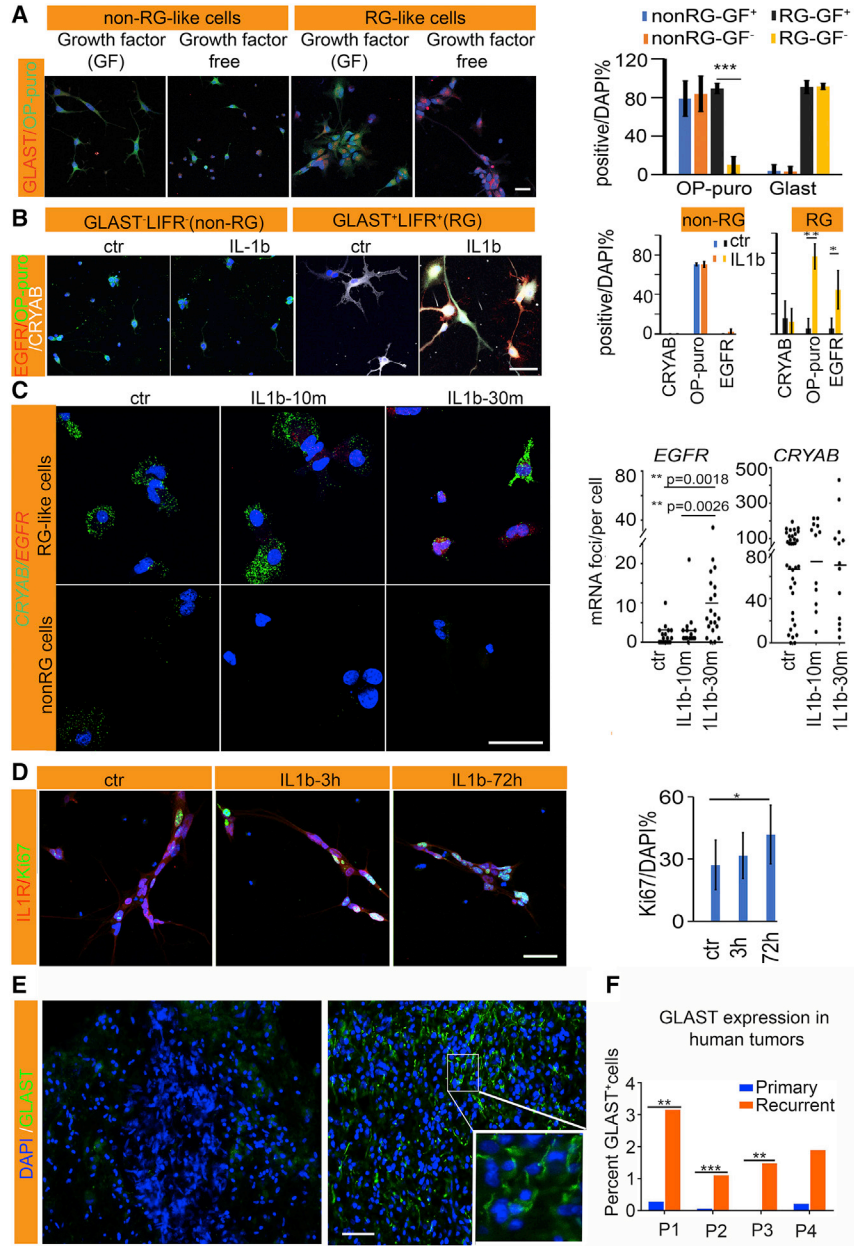


Figure 4. Inflammation Regulates Cell-Cycle States of RG-like Cells (original)