



Published in final edited form as:

*Annu Rev Pathol.* 2019 January 24; 14: 421–447. doi:10.1146/annurev-pathol-020117-043711.

## Pathology and Pathogenesis of Chagas Heart Disease

Kevin M. Bonney<sup>1</sup>, Daniel J. Luthringer<sup>2</sup>, Stacey A. Kim<sup>2</sup>, Nisha J. Garg<sup>3</sup>, David M. Engman<sup>2</sup>

<sup>1</sup>Liberal Studies, Faculty of Arts and Sciences, New York University, New York, NY 10003, USA;

<sup>2</sup>Department of Pathology and Laboratory Medicine and Smidt Heart Institute, Cedars-Sinai Medical Center, Los Angeles, California 90048, USA;

<sup>3</sup>Department of Microbiology and Immunology, University of Texas Medical Branch, Galveston, Texas 77555-1070, USA;

### Abstract

Chagas heart disease is an inflammatory cardiomyopathy that develops in approximately one-third of people infected with the protozoan parasite *Trypanosoma cruzi*. One way *T. cruzi* is transmitted to people is through contact with infected kissing bugs, which are found in much of the Western Hemisphere, including in vast areas of the United States. The epidemiology of *T. cruzi* and Chagas heart disease and the varied mechanisms leading to myocyte destruction, mononuclear cell infiltration, fibrosis, and edema in the heart have been extensively studied by hundreds of scientists for more than 100 years. Despite this wealth of knowledge, it is still impossible to predict what will happen in an individual infected with *T. cruzi* because of the tremendous variability in clonal parasite virulence and human susceptibility to infection and the lack of definitive molecular predictors of outcome from either side of the host–parasite equation. Further, while several distinct mechanisms of pathogenesis have been studied in isolation, it is certain that multiple coincident mechanisms combine to determine the ultimate outcome. For these reasons, Chagas disease is best considered a collection of related but distinct illnesses. This review highlights the pathology and pathogenesis of the most common adverse sequela of *T. cruzi* infection—Chagas heart disease—and concludes with a discussion of key unanswered questions and a view to the future.

### Keywords

Chagas; heart; trypanosome; myocarditis; cardiomyopathy; pathogenesis

## INTRODUCTION

Chagas disease, also known as American trypanosomiasis, is caused by infection with the protozoan parasite *Trypanosoma cruzi* (1). *T. cruzi* is endemic to vast areas of the Western Hemisphere, from Argentina to the United States. *T. cruzi* is a zoonosis, naturally transferred

---

kevin.bonney@nyu.edu.

### DISCLOSURE STATEMENT

The authors are not aware of any affiliations, memberships, funding, or financial holdings that might be perceived as affecting the objectivity of this review.

among domestic and wild animals and humans by triatomine insects called reduviid bugs, or kissing bugs (2). In addition to insect transmission, which accounts for approximately 70% of infections, congenital transmission is responsible for 26% of cases, and a small number of people (<1% of each of the following categories) are infected by transfusion or transplantation from a *T. cruzi*-infected donor, laboratory accidents, or consumption of liquids or food contaminated with *T. cruzi* (Figure 1) (3). *T. cruzi*-infected individuals are found throughout the world due to the migration of infected individuals from areas of high Chagas disease endemicity (such as South and Central America) to areas with relatively low insect transmission (the United States) to no known insect transmission (the rest of the world) (4). Chagas disease currently affects 6–8 million people and is responsible for approximately 12,000 deaths per year (5). There are 28,000 new cases of *T. cruzi* infection per year. All of these numbers are much lower now than several decades ago due to increased public knowledge of the disease, blood screening to reduce transfusion-acquired disease, and insecticide spraying programs aimed at reducing transmission.

Benznidazole and nifurtimox are nitroimidazole compounds used to treat *T. cruzi* infection. They are reasonably effective in both acute and chronic disease (6), although treating chronically infected patients with cardiomyopathy did not affect progression to heart failure (7). A study by Morillo et al. (7) revealed a number of limitations in our ability to diagnose, accurately assess, and predict clinical outcome in *T. cruzi* infection and did not address the important question of whether treating the vast majority of infected individuals, who have no heart disease, might reduce the likelihood of them developing cardiomyopathy (8). There is currently no vaccine for *T. cruzi* infection, although many are hopeful that a vaccine will be developed in the coming years (9).

*T. cruzi* has a complex life cycle involving two hosts, the reduviid bug and virtually any vertebrate, and three distinct morphological and functional developmental stages: epimastigotes, trypomastigotes, and amastigotes. The epimastigote form replicates in the midgut of the reduviid bug and develops into nonreplicative metacyclic trypomastigotes in the hindgut. *T. cruzi* is transmitted to humans when the bite wound from a reduviid bug or a mucosal surface, such as the conjunctiva, is contaminated with parasites present in the triatomine excreta (10). After transmission, the bloodstream trypomastigote form of *T. cruzi* is able to enter a variety of host cells where it differentiates into the replicative amastigote form and multiplies in the cytoplasm. Eventually, parasitized cells rupture, releasing trypomastigotes, which may infect adjacent cells, be disseminated through the blood and infect cells at other locations in the body, or be taken up by another bug during a subsequent blood meal.

The clinical course of Chagas disease is commonly considered to have acute, indeterminate, and chronic phases (10, 11). If symptoms develop during acute infection, they are usually mild and nonspecific and often mistaken for a viral illness unless there is an obvious sign of infection, such as inflammation at the site of the bug bite (chagoma) or periorbital edema developing after conjunctival infection (Romaña's sign). Approximately 1% of acutely infected people develop lymphadenopathy, hepatosplenomegaly, myocarditis, pericardial effusion, and heart failure or meningoencephalitis. Parasites are usually detectable in the blood for 2 to 4 months and thereafter are detectable by polymerase chain reaction (PCR) or

indirectly by the presence of *T. cruzi*-specific antibodies. The infected person then enters the indeterminate phase, which is essentially a years-to-decades-long phase of low-level infection with no organ dysfunction and no symptoms of infection. The vast majority of people remain in the indeterminate phase for life without any clinical symptoms, but with a positive serology (Figure 2). Historically, it has not been possible to accurately predict which indeterminate-phase individuals will progress to a chronic disease state; however, a type of circulating plasma microRNA, referred to as microRNA-208a, has been studied as a potential biomarker for predicting the risk of Chagas disease progression (12).

Approximately 30% of infected individuals eventually progress from the indeterminate to the chronic (clinical) phase of Chagas disease. In these individuals, the indeterminate phase may involve years of undetected accumulation of diffuse myocardial damage prior to clinical detection. Cardiomyopathy is the most important clinical manifestation of chronic Chagas disease because of the frequency with which it develops (in 20–30% of infected individuals), and its severity, morbidity, and mortality. It is a complex disease that includes a wide spectrum of manifestations, ranging from minor myocardium involvement to left ventricular systolic dysfunction, dilated cardiomyopathy, arrhythmias, thromboembolic events, and terminal cardiac failure (13). In addition to cardiac involvement, Chagas disease may also affect the gastrointestinal tract and nervous system. Gastrointestinal symptoms in chronic Chagas patients are most often a result of damage to either excitatory or inhibitory enteric innervation by *T. cruzi* parasites (14). Although the most common gastrointestinal manifestations are megaesophagus and megacolon, essentially any part of the gastrointestinal tract can be involved, from the salivary glands to the rectum (14). Gastrointestinal Chagas disease (~10%) is most frequently observed in individuals infected south of the equator, in the region extending from central Brazil down through the Southern Cone countries of South America (15). The geographic distribution of this form of the disease is thought to result from subspecific variation among regional *T. cruzi* populations (15).

## THE PATHOLOGY OF CHAGAS HEART DISEASE

The pathology of Chagas disease is complex, heterogeneous, and dependent on many variables, with parasite and host determinants of immunity and inflammation having critical roles (16–18). The heart is the organ most frequently affected in chronic disease (19). Current thinking is that the inflammation in the heart develops over years from indolent, low-grade processes that depend, at least in part, on the few parasites that persist in the heart. Intertwined cellular and molecular mechanisms contribute to degenerative, destructive, inflammatory, and reparative responses, which are detailed throughout the remainder of this review. It is the sum of these processes that culminates in the varied outcomes of infection: from no disease whatsoever to cardiac damage and remodeling that can ultimately lead to heart failure and related clinical sequelae, such as stroke (17).

### The Pathology of Acute Chagas Heart Disease

The acute phase of Chagas heart disease occurs within the first few weeks of parasite inoculation, and it is usually of weeks to a few months in duration (11). In the mammalian

host, *T. cruzi* under-goes initial rounds of replication near the site of inoculation, with released trypomastigotes able to infect a wide range of cell types throughout the body. Essentially, any nucleated cell can be infected by *T. cruzi* (20). In the heart, these include myocytes, endothelial cells, neurons, fibroblasts, and adipocytes (21). The parasite shows particular tropism for striated cardiac myofibers, which may explain why the heart is the organ most commonly involved in chronic disease. The mechanism underlying this potential tropism has not been conclusively determined, but it might be related to the highly developed plasma membrane repair mechanisms that are operative in these cells, which facilitate parasite entry (22). In the rare cases (<1%) in which clinically apparent myocarditis develops during the acute phase, the myocardial inflammation is similar to that of other forms of myocarditis. Depending on the particular combination of *T. cruzi* strain and host genetic and immunologic variants, fulminant intracardiac replication may occur, with the accumulation of large numbers of intracellular amastigote forms that can be seen easily by light microscopy and that appear as a cyst in the tissue. Since each amastigote cyst is actually the parasitized cytoplasm of a single cell, it is a false cyst or pseudocyst.

Upon microscopic examination, *T. cruzi*-infected myocardial fibers show evidence of damage, characterized by vacuolization, myocytolysis, and myofibrillar degeneration. These changes are invariably associated with intense mononuclear cell infiltration, which is initially composed of macrophages and neutrophils and then becomes more mixed, with the addition of lymphocytes, plasma cells, eosinophils, and mast cells (23). The infiltrating lymphocytes have broad antigen specificity, including to parasite, host, and nonspecific antigens. Other factors contribute to and exacerbate the inflammatory response, including the local production of cytokines, chemokines, and their receptors; the upregulation of adhesion molecules; complement activation; platelet aggregation and adhesion; and antibody production and opsonization. Interstitial edema, hemorrhage, and vasculitis may be present. Within weeks, as the host adaptive immune response develops, the number of parasitized cells diminishes dramatically and the inflammatory cell response wanes, usually with resolution of myocardial tissue to a near-normal state. Residual abnormalities of acute myocarditis include scarring (interstitial fibrosis) and myofiber hypertrophy, with a minimal, or low-grade, ongoing inflammatory reaction. The gross features of the acute phase of Chagas cardiomyopathy range from minimal change to dilatation of the atria and ventricles that gives a globular architecture in severe cases. As mentioned above, acute infection is typically subclinical, although infection may be suspected if there is a chagoma or Romana's sign, when there has been a laboratory accident, or transfusion of blood or transplantation of tissue from a *T. cruzi*-infected donor to a recipient who develops symptoms of systemic infection.

### **The Pathology of Chronic Chagas Heart Disease**

Most people with chronic infection live their lives with no sequelae of infection (Figure 2). Many were infected as children and are unaware of being infected. However, approximately 10% of these individuals develop megaesophagus or megacolon, both of which are fascinating illnesses that result from defects in the enteric nervous system (24) and are not discussed further in this review. Slowly developing inflammatory changes and scarring of the myocardium ultimately lead to changes in gross cardiac morphology in approximately

20–30% of infected individuals (25). Hearts are typically globally enlarged, with marked alteration in size and shape (Figure 3). Chamber dilatation predominates over hypertrophy, resulting in the globular appearance. The conus arteriosus may be prominent or bulging, and distinct delineation of the right and left ventricles gives a cor bifidum appearance (26). The epicardium may have dense fibroinflammatory plaques that align along the coronary arteries, sometimes in what is described as a rosary pattern. In about half of those who develop chronic disease, the heart shows an unusual thinning of the ventricular wall—usually near the apex of the left ventricle, but sometimes near the right—that bulges in the form of an aneurysm (Figure 3).

Microscopic evaluation of these areas shows dramatic atrophy, with the loss of myocardial fibers and their replacement by dense, fibrous scar tissue and fat between the endocardium and epicardium (Figure 4). Inflammation is generally lacking in these areas, and there are no parasites. Endocardial thrombi are frequently present in the aneurysm, showing varying degrees of organization (Figure 3d). Mural thrombi can be found elsewhere in the heart as well. Large areas of dense white scar tissue are commonly identified throughout the myocardium. Coronary arteries may be dilated and have minimal evidence of atherosclerotic changes.

The classic pathologic features of the chronic phase of Chagas cardiomyopathy include low-grade myocarditis accompanied by myocytolysis, myofiber hypertrophy, and interstitial fibrosis (26). In contrast to the acute phase, only focal areas of inflammation are generally found in the hearts of chronic Chagas patients. Inflammatory cell infiltrates are composed primarily of T cells and macrophages, with a few eosinophils, plasma cells, and mast cells (Figure 4). Unlike during the acute phase, parasites are rarely observed by conventional microscopic analysis of cardiac biopsy samples or random sections of explants or autopsy specimens (27). Myofiber degeneration is focal and associated with areas of inflammation. The scarring and fibrosis related to the chronic phase are prominent features that can be focal or diffuse, and they involve almost any area of the myocardium, although some older resources describe a ventricular predominance over an atrial predominance, a predominance of left over right, and a predominance of subepicardial myocardium over mural myocardium. Fibrosis exhibits a somewhat unique pattern of distribution, often surrounding and enveloping individual myocardial fibers, a feature that loosely separates it from the patterns of fibrosis noted in idiopathic dilated cardiomyopathy (28, 29). Rarely, nonnecrotizing granulomas may be present with multinucleated giant cells. Vasculitis is not a characteristic feature of chronic Chagas heart disease (30). With time, myofiber hypertrophy may become prominent, characterized by significant variation in myofiber and nuclear size and shape and increased perinuclear deposits of lipofuscin. Small blood vessels may show abnormalities, which include luminal narrowing, a feature that potentially supports a hypothesis of local injury related to ischemia (31, 32).

These chronic inflammatory changes with evidence of remodeling are found throughout the myocardium, including in regions harboring conducting fibers and nodes (33). Andrade et al. (34) also described a range of microscopic inflammatory changes, including scleroatrophy, fibrosis, and vascular ectasia in the atrioventricular conducting system, proposing a direct causal relationship to the clinical arrhythmic abnormalities in the study's

cohort. The destruction of parasympathetic nerves in the epicardial–mediastinal region has been documented, potentially suggesting a causative mechanism for arrhythmias and sudden death (35, 36). It has been suggested that direct damage by parasitism, inflammation, and antineuronal autoimmune reactions may all contribute to parasympathetic nerve damage, although this clinical feature is not specific to Chagas patients (32). Further, although this mechanism is consistent with autopsy reports showing significant denervation in some Chagas patients who died suddenly, this theory has not been rigorously tested, and recently the role of parasympathetic impairment in Chagas pathogenesis has been questioned more generally (32).

The chronic phase of the disease likely represents, at least in part, a slowly progressive, cyclical reaction to the presence of intramyocardial parasites, which results in a smoldering, ongoing inflammatory reaction, myocardial cell necrosis and dropout, and fibrosis that develop over years to decades. This theory has been advanced by studies in which low numbers of *T. cruzi* organisms, fragments, or antigens can be demonstrated in many chronic cases by immunohistochemical and PCR assays (37), which have greater sensitivity than conventional microscopy. This is supported by observations in human and animal studies that indicate trypanocidal therapies frequently do not completely clear *T. cruzi*, potentially leaving a stimulus for ongoing inflammation (38). However, foci of inflammation often have no geographic or temporal relationship to the presence of *T. cruzi*, suggesting that other mechanisms might contribute to ongoing inflammatory cascades and subsequent clinical decompensation. Finally, recent results using highly luminescent parasites and detailed molecular analyses show that myocarditis can develop in the complete absence of cardiac parasitism (39).

## MECHANISMS OF THE PATHOGENESIS OF CHAGAS HEART DISEASE

Many of the mechanisms of the pathogenesis of Chagas heart disease have been described and defined in detail in humans and experimental animals (40). Most proposed mechanisms require the presence of *T. cruzi* somewhere in the host, whether in the heart or elsewhere, to produce and/or propagate cardiac pathology. Indeed, even cardiac autoimmunity, which develops in some people and animals infected with *T. cruzi*, resolves upon removal of the parasite (41). It is essentially impossible to study any individual mechanism of pathogenesis in an infected person or animal in isolation because other mechanisms may also be operative and can either accentuate or moderate the mechanism under study. For example, T regulatory (Treg) responses that develop to downregulate the autoimmunity that can develop in some individuals may also suppress parasite-specific immunity and permit *T. cruzi* to persist and replicate in the tissue. However, because most investigations have been designed to explore only one mechanism, we present them separately below, with the understanding that the final outcome of *T. cruzi* infection is an integration of many distinct processes rather than resulting from only one.

The absence or paucity of parasites in the hearts of those who succumb to Chagas heart disease has been a conspicuous feature of the disease since it was first described. The natural course of disease development in humans is largely unknown since (*i*) most individuals are unaware of being infected; (*ii*) those who develop Chagas disease typically do so many years



after infection; and (iii) those who are acutely infected are often treated. The recent development of luminescent parasite systems now permits longitudinal and noninvasive assessment of host parasitism in experimental animals, and it is hoped that these models will be valuable both for assessing the mechanisms of pathogenesis and for developing new and more effective therapies (39, 42, 43).

### Host Responses to *T. cruzi* Infection

Although the term host response encompasses complexity and early innate immune responses, nonimmune cellular responses to parasite products, cell invasion and intracellular replication, and adaptive immunity, all of which integrate to give an outcome of infection, the early response deserves separate consideration. Dendritic cells, macrophages, natural killer cells, B cells, CD4<sup>+</sup> T cells, and CD8<sup>+</sup> T cells, as well as protective and inflammatory factors—including reactive oxygen species (ROS), bioactive lipids, cytokines, and antibodies—contribute both to controlling parasite levels and to promoting tissue inflammation. Additionally, complement deposition on bloodstream trypomastigotes may be important, yet its role is not straightforward (44). While it has been shown that complement deposition enhances host cell invasion by *T. cruzi* (45), *T. cruzi* trypomastigotes are known to be resistant to complement-mediated lysis (46). This is an excellent example of the many ways that *T. cruzi* has evolved to exploit host molecules and processes that are harmful to other pathogens to advance its missions.

Disease outcome is determined by a highly complex interplay between the virulence of the *T. cruzi* strain and the genetic susceptibility of the individual, with both parasite virulence and host susceptibility varying with the parasite–host combination. That is, one parasite strain may be more virulent for one host than for another, and one host may be more susceptible to one parasite strain than to another. Further, this diversity in the species *T. cruzi* also extends to diagnosis and drug susceptibility (47). Innate and adaptive immune responses may contribute to heart damage and increase the risk of heart failure through inducing sustained inflammation, fibrosis, and oxidative stress injury, leading to the disruption of myofibrils, myocyte necrosis, microvascular dysfunction, autonomic dysfunction, and cardiac hypertrophy and fibrosis (Figure 5). Therefore, the outcome of infection results from a culmination of many processes. In the end, the ultimate goal of *T. cruzi* is the same as for any other pathogen: to replicate and persist in its human host until it can be transmitted to another host. For *T. cruzi*, this means circulating in the blood at levels sufficient to be picked up by a reduviid bug during a blood meal and transmitted to another animal or human. An autopsy-based study employing histology, immunohistochemistry, and PCR determined that there are vanishingly small numbers of *T. cruzi* in chronic infection, and the heart is the only solid organ with detectable parasites (and, then, these are detected only by PCR and only in 57% of cases) (48). Of course, this paucity of parasites in the heart has been a notable feature of Chagas heart disease for more than 100 years, and it is important to bear this in mind as we explore the pathogenesis of this important illness that afflicts millions throughout the world and especially in the Western Hemisphere (49).

## Innate Immune and Nonimmune Mechanisms of Chagas Pathogenesis

There have been many fine reviews of the innate immune mechanisms in *T. cruzi* infection (50), including those relating to Toll-like receptors (51) and inflammasomes and Nod-like receptors (52–54). In this review, we focus on the areas of innate immunity and nonimmune mechanisms that have not been emphasized in previous reviews.

**Macrophages and oxidative stress.**—In addition to producing cytokines and chemokines, activated macrophages exert cytotoxic effects against microbes by producing ROS and reactive nitrogen species. NADPH (nicotinamide adenine dinucleotide phosphate) oxidase (NOX2) is a multimeric complex that utilizes NADPH as substrate and reduces O<sub>2</sub> to produce superoxide (O<sub>2</sub><sup>•-</sup>) that is then further dismutated into the stable and diffusible pro-oxidant H<sub>2</sub>O<sub>2</sub>. In infected mice, blocking NOX2 ROS arrests the activation and proliferation of splenic phagocytes and the production of inflammatory cytokines [e.g., interleukin (IL)-1, IL-6, interferon (IFN)- $\gamma$ , tumor necrosis factor (TNF)- $\alpha$ ] (55). This was confirmed by the finding that *p47<sup>phox</sup>*<sup>-/-</sup> mice exhibit increased susceptibility to *T. cruzi* and succumb to infection (56).

Likewise, inducible nitric oxide synthase utilizes L-arginine and O<sub>2</sub> for the synthesis of L-citrulline and nitric oxide (NO) in a complex oxidoreductase reaction (57). The reaction of NO with O<sub>2</sub><sup>•-</sup> produces peroxynitrite, which is a strong cytotoxic oxidant that kills *T. cruzi* in macrophages (58, 59). However, the extent of the ROS and NO responses in human and mouse macrophages infected with *T. cruzi* is significantly lower than that observed in lipopolysaccharide–IFN- $\gamma$ -induced proinflammatory macrophages (60). Indeed, trypanosomes have evolved an elaborate antioxidant system to scavenge ROS NO from macrophages (61, 62). Parasite isolates overexpressing cytoplasmic and mitochondrial tryparedoxin peroxidases are able to infect and multiply more efficiently in macrophages (59, 63) and, thus, utilize macrophages to disseminate to different tissues.

In nonimmune cells such as cardiac myocytes, *T. cruzi* infection induces ROS production through mitochondria (64). Mitochondrial (mt) ROS signals nuclear factor  $\kappa$ B (NF- $\kappa$ B)-dependent cytokine gene expression (64, 65) and causes mtDNA damage (e.g., 8-hydroxyguanine lesions) that signals activation of the DNA repair enzyme polyadenosine ribose polymerase 1 (PARP1). PARP1-dependent posttranslational modification of RelA (p65)-interacting nuclear proteins facilitates the assembly of the NF- $\kappa$ B transcription complex and boosts cytokine gene expression (64, 65). Further, Sirtuin 1 (SIRT1), a highly conserved member of the family of NAD<sup>+</sup>-dependent Sir2 histone deacetylases, competes with PARP1 for its NAD<sup>+</sup> substrate and integrates mitochondrial metabolism and inflammation. Treating mice with the SIRT1 agonist SRT1720 has no effect on *T. cruzi* burden, but it suppresses NF- $\kappa$ B-dependent transcription and reduces oxidative and inflammatory stress in infected cells and mice (66). These studies point to the possibility that ROS–PARP1/PAR–RelA contributes to inflammatory pathology in *T. cruzi* infection and that the pathology might be reduced through SIRT1 activation.

**Macrophages and chronic inflammation.**—The New York Heart Association (NYHA) functional classification of heart failure places patients in one of four categories



according to the severity of their symptoms. Chagas patients with NYHA class III–IV display a proinflammatory transcriptomic and proteomic profile in peripheral blood mononuclear cells (67–70) and increased levels of TNF- $\alpha$ <sup>+</sup> monocytes (71–73) in the circulation. In contrast, IL-10<sup>+</sup> monocytes with an anti-inflammatory transcriptome are present in the peripheral blood of infected individuals classified as NYHA class I–II who have no-to-minimal left ventricular dysfunction. Several studies conducted during the 2010s suggested that chronic injurious processes generate cellular debris that signals a proinflammatory macrophage response in class III–IV patients (74). Cardiac proteins oxidized during *T. cruzi* infection are immunogenic, and immunity to these oxidized proteins can cause cardiac inflammation and decreased cardiac contractility. Preventing protein oxidation by treatment with the spin-trapping antioxidant  $\alpha$ -phenyl-*N*-*tert*-butyl nitron (PBN) prevents immunity to these oxidized proteins and maintains normal cardiac histology and cardiac contractility (75).

**Mitochondrial dysfunction and oxidative stress.**—*T. cruzi* invasion elicits massive calcium mobilization in the host cell (76), mitochondrial membrane potential transition (64, 65), and O<sub>2</sub><sup>•-</sup> production in cardiac myocytes (77, 78). In vivo studies show that mitochondrial defects of the respiratory chain contribute to consistently high levels of mtROS and oxidative adducts in experimental animals and humans, and elevated mtROS is associated with a decline in host antioxidant capacity due to inhibition of the nuclear factor (erythroid 2)-like 2 (NFE2L2, also known as NRF2) antioxidant response element pathway and other mechanisms (77, 79–83). Enhancing antioxidant capacity by treatment with antioxidant PBN or vitamin A or overexpression of the Mn isoform of superoxide dismutase (known as MnSOD) can prevent oxidative stress and preserve mitochondrial and left ventricular function (82, 84–86). Likewise, treatment with sildenafil, an inhibitor of phosphodiesterase 5, provides cardioprotection through preservation of cGMP-dependent protein kinase activity and antioxidant–oxidant balance in chronically infected mice (87). These studies conclusively establish the pathogenic importance of mtROS and chronic oxidative stress in Chagas disease. The benefits of ROS scavengers in suppressing hypertrophic gene expression were also noted in experimental studies (77, 80), while treatment of *T. cruzi*-infected rodents with the trypanocidal drug benznidazole suppresses the classical mediators of inflammatory ROS (e.g., NOX2 and myeloperoxidase) but not the hypertrophic response. These observations imply that ROS of mitochondrial origin contributes to cardiac remodeling in Chagas disease.

It was not understood until recently why the antioxidant response is not triggered in the presence of continued oxidative stress in the *T. cruzi*-infected myocardium. NFE2L2 is a transcription factor that regulates the expression of antioxidant proteins. NFE2L2 activation is decreased in cardiac myocytes and the myocardium of mice infected with *T. cruzi*. Importantly, inhibiting *T. cruzi*-induced mtROS by overexpression of MnSOD in cardiac myocytes preserves NFE2L2 transcriptional activity and antioxidant–oxidant balance, and MnSOD<sup>tg</sup> mice overexpressing MnSOD also preserve normal cardiac structure and function (85). These findings provide evidence that mtROS inhibition of the NFE2L2/antioxidant responsive element (or ARE) pathway constitutes a key mechanism in stimulating the expression of genes promoting fibrosis and the evolution of chronic Chagas cardiomyopathy.

Several drugs that stimulate the NFE2L2 pathway are being evaluated for treating diseases that are caused by oxidative stress, and these may also be helpful as adjuvant therapy in Chagas disease. In summary, *T. cruzi*-induced ROS production by mitochondria and inflammatory cells is crucial for clearing parasites, yet it may lead to prolonged oxidative stress, resulting in pathologic changes within the myocardium in Chagas patients.

**Lipid mediators.**—Lipid derivatives of arachidonic acid, including leukotrienes (LTB<sub>4</sub>) and cys-teinyl lymphotoxins (LTC<sub>4</sub>, LTD<sub>4</sub>, and LTE<sub>4</sub>), also contribute to reducing cardiac pathology in Chagas disease by modulating cytokine production, macrophage function, and NO-dependent killing of *T. cruzi* (86). Many inflammatory mediators are stored in specialized organelles known as lipid bodies, which increase in number inside macrophages in response to *T. cruzi* infection (88). LTB<sub>4</sub> synthesis is mainly directed by dendritic cells, granulocytes, macrophages, and mast cells through the production of the enzyme 5-lipoxygenase (5-LO). 5-LO deficiency in mice permits an increase in peak parasitemia during *T. cruzi* infection. However, these mice also survive longer upon infection and have lower cardiac parasitosis, inflammation, and fibrosis (89, 90). This is yet another example of the complexity of innate immunity in balancing parasite control and tissue pathology. 5-LO also induces the synthesis of lipoxin A<sub>4</sub> (LXA<sub>4</sub>), which induces the anti-inflammatory suppressor of cytokine signaling 2 (SOCS2). In *T. cruzi*-infected mice, SOCS2 deficiency decreases cardiac inflammation, but not parasitosis, and also decreases myocyte dysfunction and cardiac hypertrophy (91). This is accompanied by a reduction in levels of IL-12, IFN- $\gamma$ , TNF- $\alpha$ , and other proinflammatory cytokines. SOCS2 deficiency also leads to an increase in LXA<sub>4</sub> expression and the number of Tregs and increased macrophage sensitivity to IFN- $\gamma$ , which could explain the ability to clear parasites despite a reduction in proinflammatory mediators (91). LXA<sub>4</sub> may function through both SOCS2-dependent and SOCS2-independent mechanisms, and its effects may be augmented by other lipid mediators, such as thromboxane A<sub>4</sub> (TXA<sub>4</sub>). By suppressing the proliferation of intracellular *T. cruzi* and thereby enhancing survival in acute infection, TXA<sub>4</sub> may promote a state of low-level chronic infection. Additional studies also suggest that the induction of prothrombotic lipids, such as TXA, increases parasitemia and cardiovascular damage (92). Clearly, bioactive lipids are important modulators of *T. cruzi* infection and of the cardiac pathology resulting from chronic infection, and thus pharmacologic modulation of these lipids may have therapeutic benefit.

**Additional factors.**—All of the innate immune mechanisms mentioned above vary depending on the strain of *T. cruzi* involved and the genetic background of the host, both in humans (93) and experimental animals (94). In addition to innate and adaptive immunity, other mechanisms—including microvasculopathy, autonomic neuropathy, and kallikrein-kinin dysregulation—may also influence outcomes (40, 95–97).

Adipocytes appear to serve as an important reservoir for *T. cruzi* as well as to contribute to the development of a chronic inflammatory state that promotes cardiac damage in chronically infected individuals (21). The detection of *T. cruzi* DNA in the adipose tissue of elderly Chagas patients combined with experimental observation of *T. cruzi* infection in human and mouse adipocytes is consistent with a role for parasite persistence in Chagas

pathogenesis, and it is suggestive of a role for adipose tissue in maintaining and reactivating chronic infection. Due to the prominent role of adipose tissue in energy metabolism, insulin sensitivity, and inflammation, it has been suggested that *T. cruzi* infection may be linked to other adipocyte-associated diseases, such as diabetes and obesity (98). Chagas cardiomyopathy may be further affected by the activation of the kallikrein–kinin system, leading to a proinflammatory response that is characterized by mast cell expansion, vasodilation, increased vascular permeability, and cardiac edema and is accompanied by increased myocardial parasitism (99). Evidence that cardiac dysautonomia is a significant component of Chagas cardiomyopathy includes reports of impaired parasympathetic heart rate regulation, tachycardia, and other functional abnormalities linked to cardiac neuropathy, as well as a notable reduction of parasympathetic innervation in the myocardium observed upon autopsy of individuals who had chronic Chagas disease (35, 36). Reversible perfusion defects and reductions in the poststress left ventricle ejection fraction have also been observed in infected individuals in both the indeterminate and chronic phases of Chagas heart disease. However, the subtleness and variability of denervation and the lack of a clear relationship between dysautonomia and death in Chagas patients raises questions about the role of neuropathy in Chagas pathogenesis. Due to the heterogeneity in disease progression, the precise contribution of each of these factors is likely to vary considerably among patients.

### Adaptive Immunity to *T. cruzi* Infection

Innate immunity to *T. cruzi* infection is important to prevent unchecked intracellular parasite proliferation through all of the mechanisms described above. These innate immunity responses bide time until antigen-specific adaptive immunity develops, which is ultimately responsible for clearing infected cells.

**Cell-mediated immunity.**—By the early 1990s, much work had already been done to delineate the importance of lymphocyte subsets in immunity to *T. cruzi* (100–102). It is now known that essentially every lymphocyte subset is important in immunity to *T. cruzi*. Infection elicits a pre-dominately T helper 1 (Th1)–type immune response, both in the myocardium and peripherally. This response is characterized by the expression of the Th1 cell transcription factor Tbet and the production of Th1 cytokines (i.e., IFN- $\gamma$ , IL-2, IL-12, and TNF- $\alpha$ ), which are accompanied by suppressed levels of transcription factors and cytokines associated with Th2 (i.e., GATA-3, IL-4, and IL-10) and Th17 responses (i.e., IL-17) (103–107). Among chronically infected individuals, those with heart disease produce higher levels of IFN- $\gamma$ , TNF- $\alpha$ , and IL-6 and lower levels of IL-4 and IL-10 than those in the indeterminate phase (108). This promotes Th1 differentiation and proliferation in CD4<sup>+</sup> T cells, leading to activation of antiparasite responses by CD8<sup>+</sup> T cells and macrophages (109). Effector CD8<sup>+</sup> T cells are crucial for recognizing *T. cruzi*-infected cells and controlling infection (110). Reduced CD8<sup>+</sup> T cell responses are associated with more severe clinical disease, and treatments that improve CD8<sup>+</sup> T cell responses improve clinical outcome, presumably through cytotoxicity that clears infected cells (111, 112).

Within the CD4<sup>+</sup> T cell compartment, both Th1 and Th17 immunity are protective against *T. cruzi* infection, yet they may also contribute to deleterious inflammation and increase the

severity of cardiac lesions (104, 113–115). The complexity of Th1 and Th17 responses to *T. cruzi* infection is highlighted by the observation that selective downregulation of Th1 cells and Th17 cells by parasite *trans*-sialidases or the expression of other immunomodulatory factors promotes both host survival and low-level parasite persistence by reducing both protective and harmful effects (113, 116). Levels of IFN- $\gamma$ , IL-2, and IL-10 may predict the risks of arrhythmia and sudden death in Chagas patients, with elevated IL-2 most strongly correlated with a high risk of death (117). However, the frequency of activated T cells is inversely related to disease severity, and chronic infection may lead to clonal exhaustion and reduced numbers of memory T cells (118–121). This effect is greater for CD8<sup>+</sup> T cells than for CD4<sup>+</sup> T cells.

The presence of active myocarditis during the chronic phase of disease increases the chance of progression to heart failure (122). Chagas myocarditis typically is characterized by diffuse foci of myofibril disruption, fibrosis, few if any intracellular parasites, and mononuclear cell infiltration (123, 124). The inflammatory infiltrate is composed primarily of lymphocytes and macrophages, with smaller numbers of natural killer cells, dendritic cells, and granulocytes. Among infiltrating lymphocytes, parasite-specific CD8<sup>+</sup> T cells are thought to predominate among other populations of CD4<sup>+</sup> and CD8<sup>+</sup> T cells.

In addition to directly damaging cardiac myocytes and disrupting myofibrils, infiltrating lymphocytes and other inflammatory mediators produced in response to the primary infection may trigger autoimmune responses. Polyantigenic autoimmunity involving T cells has been widely reported both in humans and experimental animals infected with *T. cruzi*, yet the significance of autoimmunity in the pathogenesis of human Chagas heart disease is not known, despite there being hundreds of published articles characterizing the autoimmunity in detail. Pathogenic autoimmunity involving CD45<sup>+</sup>, CD8 $\gamma\delta$ <sup>+</sup>, CD8 $\alpha$ <sup>+</sup>, and other autoreactive T lymphocytes has been demonstrated both in chicken and mouse models of experimental Chagas disease (125, 126), but a clear link between cell-mediated autoimmunity and myocardial inflammation in humans has not been demonstrated. The prevalence, significance, and mechanisms of the development of autoimmunity in human Chagas heart disease are major unresolved questions in the field (127).

It is advantageous to both the host and parasite to moderate T cell immunity during *T. cruzi* infection: a response that promotes parasite persistence to enable the parasite to transfer to new hosts but has no-to-moderate morbidity and no premature mortality serves the needs of both partners in the symbiotic relationship. CD4<sup>+</sup>CD25<sup>+</sup>Foxp3<sup>+</sup> Treg cells modulate proinflammatory immune responses by downregulating prolonged activation of CD4<sup>+</sup> T cells and CD8<sup>+</sup> T cells. Peripheral Treg cell populations are reduced during acute *T. cruzi* infection, and they expand during chronic infection (128, 129). This may promote the expansion of effector and Th cells during acute infection when parasitemia is highest, and it may later control tissue damage resulting from exposure to the persistent inflammatory state that develops during chronic disease. This may also facilitate the persistence of low-level infection in patients with indeterminate or chronic Chagas disease. In experimental Chagas disease, the depletion of Tregs during acute infection increases the levels of inflammatory mediators, myocarditis, and tissue parasitosis, leading to earlier mortality (130, 131). This effect may depend on several factors, including the method of Treg depletion. Other studies

have attributed a range of effects to the loss of Treg function during *T. cruzi* infection, from no significant impact to a notable increase in the expression of inflammatory mediators that is accompanied by reduced parasitemia and cardiac pathology (130, 132, 133). These pathologic changes are associated with an elevated Th1 response early in the course of infection, followed by a downregulation of Th1 cells and an increase in Th17 cells during later phases of infection (132). Genetic polymorphisms associated with lower expression of transforming growth factor (TGF)- $\beta$ —a regulatory cytokine produced by Treg cells that promotes the differentiation of naive T cells into Th17 cells—are also associated with a lower susceptibility to developing cardiomyopathy (134). This suggests that Tregs help control cardiac inflammation by modulating the proinflammatory Th1 and Th17 cell responses required for parasite clearance, yet they also contribute to immune-mediated cardiac damage. Various methods for promoting Treg cell functionality have been suggested as potential therapeutic approaches. These include the adoptive transfer of Treg cells, intravenous immunoglobulin therapy, administration of low-dose IL-2–IL-2 antibody complex, administration of sphingosine 1–phosphate receptor 1 agonists, and vitamin D supplementation (135). The efficacies of these interventions are yet to be tested.

*T. cruzi* may indirectly influence T cell responses through interactions with dendritic cells. Exposure to low-virulence strains of *T. cruzi* triggers upregulation of major histocompatibility complex (MHC) class I and II on dendritic cells, leading to increased production of IL-6, IL-12, and TNF- $\alpha$ , which promote the activation and proliferation of Th cells and effector T cells (136). This protective immunity results in increased clearance of *T. cruzi*. In contrast, high levels of virulence are achieved by some parasite strains that are capable of manipulating dendritic cells to downregulate the expression of MHC class I and II molecules, while increasing the expression of IL-10 and TGF- $\beta$  (136). This promotes the differentiation of naive T cells into Treg cells, leading to a suppressed immune response that promotes parasite replication. Although TGF- $\beta$  promotes the differentiation of T cells into Tregs, somewhat paradoxically, it has the potential to induce inflammation and fibrosis through other mechanisms. Due to its function in activating growth factors and directing tissue repair and remodeling, high levels of TGF- $\beta$  have been independently linked to the induction of inflammation, fibrosis, and cardiac hypertrophy, and it is associated with a higher incidence of heart failure and death in patients with chronic Chagas disease (137, 138). However, lower serum TGF- $\beta$  together with elevated TNF- $\alpha$  are associated with decreased left ventricular function (139). Thus, TGF- $\beta$  can have different effects depending on other factors.

Impaired peripheral T cell responses observed during acute *T. cruzi* infection may also be caused by parasite-induced inhibition of IL-2 receptor expression or by temporary clonal exhaustion of parasite-specific T cell subsets following an earlier vigorous response (140). In addition to the downregulation of IL-2 receptor expression, incubation of human peripheral blood mononuclear cells with *T. cruzi* trypomastigotes inhibits the expression of CD3, CD4, and CD8 by Th cells and cytotoxic lymphocytes, leading to reduced cell proliferation (141). A notable reduction in the frequency of T cells expressing the V $\beta$ 5 T cell receptor has been observed in patients with acute but not chronic Chagas disease (142). Robust expansion and activation of peripheral CD4<sup>+</sup> and CD8<sup>+</sup> T cells specific both for parasite and host antigens occur in patients with chronic Chagas disease.

**Humoral immunity.**—Polyclonal activation of B cells and hypergammaglobulinemia are characteristic of acute Chagas disease. The majority of antibodies produced by splenic B cells in the early phases of infection are not specific for parasite antigens, but parasite-specific antibodies may be detected within 3 weeks of infection (143). The classification of early and late acute infection and the indeterminate phase can be made based on predictable changes in antibody specificities and the ratio of lytic to nonlytic antibodies (144). Antibody quantification may also be a useful indicator of treatment efficacy in children; however, serologic tests may not be robust indicators of parasitologic cure in adults due to the prolonged persistence of circulating *T. cruzi*-specific antibodies (145). Promisingly, during the past year, a specific antibody was identified that may serve as an effective biomarker for monitoring parasite persistence in chronically infected people (146). A protective role for lytic antibodies is suggested by the association of increased levels of lytic immunoglobulin G with the indeterminate phase in patients, as well as with adults who have undetectable parasitemia after 10 years (147, 148). Although *T. cruzi* trypomastigotes are resistant to complement-mediated lysis, anti-gal antibodies may lyse trypomastigotes directly (149), and antibody opsonization may promote uptake and clearance by reticuloendothelial macrophages (150).

As is true of several of the immune and nonimmune mechanisms discussed above, humoral immunity may have deleterious as well as beneficial effects during *T. cruzi* infection. At least one parasite antigen acts as a B cell mitogen, triggering polyclonal lymphocyte activation (151). This activation may reduce the efficiency of parasite clearance by impeding the development of a robust, parasite-specific response, leading to increased cardiac pathology (152, 153). *T. cruzi* infection also triggers the production of an array of potentially pathogenic autoantibodies. Antibodies from chronically infected people may bind to cardiac myocytes and exert damage via antibody-dependent cytotoxicity, leading to the release of creatine phosphokinase (154). This may also explain why elevated levels of serum cardiac troponin I are observed both in *T. cruzi*-infected mice and uninfected mice immunized with *T. cruzi* antigens (155). Antibodies to a number of self-antigens are produced during *T. cruzi* infection; targets include cardiac antigens such as actin, myosin binding protein C, myosin, and tropomyosin, as well as muscarinic and adrenergic receptors, galectin 1, and laminin (155–158). High levels of antibodies that cross-react with cardiac myosin (anti-B13) and  $\beta$ -adrenergic receptors (anti- $\beta$ 1AR and anti-p2 $\beta$ ) are linked with disease severity in patients with chronic Chagas disease, being most abundant in those experiencing dilated cardiomyopathy and systolic heart failure (159). Autoantibodies may also contribute to pathologic changes in the heart by disrupting cardiac conduction. However, some studies suggest that autoantibody titers do not correlate with disease severity and that cardiac damage resulting from *T. cruzi*-induced autoimmunity may not be antibody mediated at all (156, 160, 161).

Although the presence of humoral autoimmunity in *T. cruzi*-infected individuals is both widespread and widely acknowledged, questions remain regarding the genesis of this autoimmunity and its importance in pathogenesis. As in some other infection-induced, organ-specific autoimmune diseases, autoimmunity may develop as a result of pathogen–host molecular mimicry, bystander activation after tissue damage, or a combination of other



immunologic factors that lead to a breach of self-tolerance (40, 162, 163). The observation of robust autoimmunity in *T. cruzi*-infected individuals in the indeterminate phase without signs or symptoms of disease supports the argument that autoimmunity is irrelevant to pathogenesis (164). Alternatively, the persistence of *T. cruzi* in anatomic sites such as adipose tissue (21) or the large intestine (39, 42) may be sufficient to promote heart disease pathogenesis in the absence of cardiac parasitosis (20, 165, 166). Indeed, the development of cardiac inflammation and fibrosis whether or not parasites are found in the heart illustrates the importance of a parasite reservoir somewhere in the body (43). Removing this reservoir from experimental animals leads to complete resolution of myocarditis (41), further supporting the importance of parasite persistence—even outside the heart—in the pathogenesis of Chagas heart disease.

## CONCLUDING REMARKS

In this article we have attempted to review the gross and microscopic pathology and major mechanisms of the pathogenesis of Chagas heart disease, with an emphasis on innate immune, adaptive immune, and nonimmune processes. We refer the reader to reviews of other relevant topics, for example autoimmunity (124, 127, 167, 168) and the heterogeneity and geographic distribution of the species *T. cruzi* (169). In the current literature, it is clear that the variable and largely unpredictable outcomes of *T. cruzi* infection result from a complex interplay of host–parasite interactions. These include protective host responses—such as immune cell infiltration of infected tissues and the release of inflammatory cytokines, ROS, and lipid mediators—and an array of parasite-specific immune responses, as well as the pathogenic effects of infection, such as myocyte destruction, inflammation, autoimmunity, and pathogenic oxidative stress and adipocyte modulation (Figure 6). To treat Chagas disease most effectively, one must determine how to tip this delicate balance in favor of the host.

### Can We Prevent the Progression of Chagas Heart Disease?

The pathology of Chagas heart disease is fascinating. Why are cardiac apical aneurysms so common in Chagas but not in other cardiac infections? Why is cardiac pathology focal and not diffuse? How do tissue inflammation, edema, and fibrosis progress over time in an individual, and why do some lesions heal while others develop? How might the removal of *T. cruzi* (especially from reservoir sites) through drug treatment prevent progression from the indeterminate to the chronic phase? There was much excitement about testing the efficacy of drug therapy on chronic patients with cardiomyopathy. The Benznidazole Evaluation for Interrupting Trypanosomiasis (BENEFIT) Trial tested the safety of benznidazole and its efficacy in improving the clinical outcomes of individuals with cardiomyopathy (170). Unfortunately, although benznidazole treatment reduced parasitemia, it did not significantly prevent the progression of cardiac disease during 5 years of follow-up. What was not tested in this trial was whether drug treatment has benefit for those in the indeterminate phase by preventing progression to the chronic phase. Indeed, this is the treatment philosophy of many Chagas physicians, even in light of the BENEFIT Trial results.

## Chagas in the United States

Another aspect of Chagas disease that has not been emphasized in general reviews such as this one is the importance of this disease in the United States. It is estimated that 300,000 persons living in the United States are chronically infected with *T. cruzi* (171), with the majority of these being people from South and Central America who were infected before migrating. This includes 30,000 people in Los Angeles alone (172). However, reduviid bugs are found throughout vast areas of the country, with more than half being infected with *T. cruzi* (173). Insect transmission of *T. cruzi* occurs in the United States as well. Although the first documented case of autochthonous transmission of *T. cruzi* was reported in 1955 (174), a person with Chagas megacolon who lived 1,200 years ago was discovered mummified in a Texas rock shelter in 2011 (175). Large percentages of wild animals, as well as nonhuman primates used in research (176) and working dogs along the Texas–Mexico border (177), have also been infected through insect transmission. A 2012 study of US blood donors estimated the prevalence of insect transmission as 1 in 354,000 eligible donors (178). A second, pilot study conducted prospectively in Houston blood donors identified individuals who were likely to have been exposed near their home, while hunting or camping, or through congenital transmission (179). A major question about autochthonous transmission relates to the pathogenic potential of the United States isolates. Many of them belong to a set of *T. cruzi* strains (TcI) known to cause chronic myocarditis (169). All of the pathology images included in Figures 3 and 4 were obtained at Cedars-Sinai Medical Center in Los Angeles (180).

## Final Thoughts on Pathogenesis

Essentially every host response to *T. cruzi* infection that aims to kill or suppress the parasite may also harm the host. When several mechanisms are operative simultaneously, for example oxidative stress and adaptive immunity, they may be synergistic or antagonistic. Regulatory responses involved in restoring the self-tolerance that may be broken during infection may dampen parasite-specific immunity and permit *T. cruzi* to replicate and disseminate. In the end, balance is best for both host and parasite. This balance likely occurs in the vast majority of infected people, who remain in the indeterminate phase of infection and eventually die of causes other than Chagas disease. A healthy balance of parasite suppression and modulated immunity keeps tissue pathology to a minimum, but allows parasites to circulate and be transferred to other hosts (181). In this regard, the death of an infected individual during the acute phase of infection is a tragic accident from the parasite's perspective. Key questions remain about the pathogenesis of Chagas disease and Chagas heart disease in particular: What determines the tissue distribution of *T. cruzi* over time? What are the mechanisms of transendothelial migration (182) and tissue tropism? What are the genetic, environmental, and physiologic factors that determine the outcome of infection in each individual? These are likely numerous, and the importance and complexity of this issue cannot be overstated. How prevalent is autochthonous infection in the United States, and what are the outcomes of those infected with natural *T. cruzi* isolates? In the end, Chagas disease is a collection of related diseases having different degrees of severity. Much work remains before we can accurately determine whether an infected person will progress from the indeterminate phase to the chronic phase and how to intervene to prevent this progression.

## ACKNOWLEDGMENTS

This work was supported in part by grants from the US National Institutes of Health (HL-075822 and AI-38022 to D.M.E. and AI-054578 and AI-136031 to N.J.G.).

## LITERATURE CITED

1. Brener Z 1973 Biology of *Trypanosoma cruzi*. *Annu. Rev. Microbiol* 27:347–82 [PubMed: 4201691]
2. WHO (World Health Organ.). 2002 Control of Chagas Disease: Second Report of the WHO Expert Committee. Geneva, Switzerland: WHO
3. Shikanai-Yasuda MA, Carvalho NB. 2012 Oral transmission of Chagas disease. *Clin. Infect. Dis* 54:845–52 [PubMed: 22238161]
4. Tanowitz HB, Weiss LM, Montgomery SP. 2011 Chagas disease has now gone global. *PLOS Negl. Trop. Dis* 5:e1136 [PubMed: 21572510]
5. PAHO (Pan Am. Health Organ.). 2018 Chagas disease portal. Pan Am. Health Organ [http://www.paho.org/hq/index.php?option=com\\_topics&view=article&id=10&Itemid=40743&lang=en](http://www.paho.org/hq/index.php?option=com_topics&view=article&id=10&Itemid=40743&lang=en)
6. Guedes PM, Silva GK, Gutierrez FR, Silva JS. 2011 Current status of Chagas disease chemotherapy. *Expert Rev. Anti. Infect. Ther* 9:609–20 [PubMed: 21609270]
7. Morillo CA, Marin-Neto JA, Avezum A, Sosa-Estani S, Rassi A Jr., et al. 2015 Randomized trial of benznidazole for chronic Chagas' cardiomyopathy. *N. Engl. J. Med* 373:1295–306 [PubMed: 26323937]
8. Pecoul B, Batista C, Stobbaerts E, Ribeiro I, Vilasanjuan R, et al. 2016 The BENEFIT Trial: Where do we go from here? *PLOS Negl. Trop. Dis* 10:e0004343 [PubMed: 26913759]
9. Beaumier CM, Gillespie PM, Strych U, Hayward T, Hotez PJ, Bottazzi ME. 2016 Status of vaccine research and development of vaccines for Chagas disease. *Vaccine* 34:2996–3000 [PubMed: 27026146]
10. Tanowitz HB, Kirchhoff LV, Simon D, Morris SA, Weiss LM, Wittner M. 1992 Chagas' disease. *Clin. Microbiol. Rev* 5:400–19 [PubMed: 1423218]
11. Benziger CP, do Carmo GAL, Ribeiro ALP. 2017 Chagas cardiomyopathy: clinical presentation and management in the Americas. *Cardiol. Clin* 35:31–47 [PubMed: 27886788]
12. Linhares-Lacerda L, Granato A, Gomes-Neto JF, Conde L, Freire-de-Lima L, et al. 2018 Circulating plasma microRNA-208a as potential biomarker of chronic indeterminate phase of Chagas disease. *Front. Microbiol* 9:269 [PubMed: 29559958]
13. Tanowitz HB, Machado FS, Spray DC, Friedman JM, Weiss OS, et al. 2016 Developments in the management of Chagas cardiomyopathy. *Expert Rev. Cardiovasc. Ther* 13:1393–409
14. Matsuda NM, Miller SM, Evora PR. 2009 The chronic gastrointestinal manifestations of Chagas disease. *Clinics* 64:1219–24 [PubMed: 20037711]
15. Perez-Ayala A, Perez-Molina JA, Norman F, Monge-Maillo B, Faro MV, Lopez-Velez R. 2011 Gastrointestinal Chagas disease in migrants to Spain: prevalence and methods for early diagnosis. *Ann. Trop. Med. Parasitol* 105:25–29 [PubMed: 21294946]
16. Machado FS, Dutra WO, Esper L, Gollob KJ, Teixeira MM, et al. 2012 Current understanding of immunity to *Trypanosoma cruzi* infection and pathogenesis of Chagas disease. *Semin. Immunopathol* 34:753–70 [PubMed: 23076807]
17. Higuchi MDL. 1997 Chronic chagasic cardiopathy: the product of a turbulent host–parasite relationship. *Rev. Inst. Med. Trop. Sao Paulo* 39:53–60 [PubMed: 9394539]
18. Teixeira AR, Nascimento RJ, Sturm NR. 2006 Evolution and pathology in Chagas disease—a review. *Mem. Inst. Oswaldo Cruz* 101:463–91 [PubMed: 17072450]
19. Tanowitz HB, Machado FS, Jelicks LA, Shirani J, de Carvalho AC, et al. 2009 Perspectives on *Trypanosoma cruzi*-induced heart disease (Chagas disease). *Prog. Cardiovasc. Dis* 51:524–39 [PubMed: 19410685]
20. Lewis MD, Kelly JM. 2016 Putting infection dynamics at the heart of Chagas disease. *Trends Parasitol.* 32:899–911 [PubMed: 27612651]

21. Ferreira AV, Segatto M, Menezes Z, Macedo AM, Gelape C, et al. 2011 Evidence for *Trypanosoma cruzi* in adipose tissue in human chronic Chagas disease. *Microbes Infect.* 13:1002–5 [PubMed: 21726660]
22. Fernandes MC, Andrews NW. 2012 Host cell invasion by *Trypanosoma cruzi*: a unique strategy that promotes persistence. *FEMS Microbiol. Rev* 36:734–47 [PubMed: 22339763]
23. Andrade ZA. 1999 Immunopathology of Chagas disease. *Mem. Inst. Oswaldo Cruz* 94(Suppl. 1):71–80
24. Jabari S, de Oliveira EC, Brehmer A, da Silveira AB. 2014 Chagasic megacolon: enteric neurons and related structures. *Histochem. Cell Biol* 142:235–44 [PubMed: 25059649]
25. Alvarez JM, Fonseca R, Borges da Silva H, Marinho CR, Bortoluci KR, et al. 2014 Chagas disease: still many unsolved issues. *Mediat. Inflamm* 2014:912965
26. Rossi MA, Ramos SG, Bestetti RB. 2003 Chagas' heart disease: clinical–pathological correlation. *Front. Biosci* 8:e94–109 [PubMed: 12456334]
27. Marcon GE, de Albuquerque DM, Batista AM, Andrade PD, Almeida EA, et al. 2011 *Trypanosoma cruzi*: parasite persistence in tissues in chronic chagasic Brazilian patients. *Mem. Inst. Oswaldo Cruz* 106:85–91
28. Rossi MA. 1991 The pattern of myocardial fibrosis in chronic Chagas' heart disease. *Int. J. Cardiol* 30:335–40 [PubMed: 2055674]
29. Rossi MA. 1998 Fibrosis and inflammatory cells in human chronic chagasic myocarditis: scanning electron microscopy and immunohistochemical observations. *Int. J. Cardiol* 66:183–94 [PubMed: 9829333]
30. Roffe E, Marino AP, Weaver J, Wan W, de Araujo FF, et al. 2016 *Trypanosoma cruzi* causes paralyzing systemic necrotizing vasculitis driven by pathogen-specific type I immunity in mice. *Infect. Immun* 84:1123–36 [PubMed: 26857570]
31. Marin-Neto JA, Simoes MV, Rassi A Jr. 2013 Pathogenesis of chronic Chagas cardiomyopathy: the role of coronary microvascular derangements. *Rev. Soc. Bras. Med. Trop* 46:536–41 [PubMed: 23904079]
32. Marin-Neto JA, Cunha-Neto E, Maciel BC, Simoes MV. 2007 Pathogenesis of chronic Chagas heart disease. *Circulation* 115:1109–23 [PubMed: 17339569]
33. Mello de Oliveira JA, Meira Oliveira JS, Koberle F. 1972 Pathologic anatomy of the His-Tawara system and electrocardiographic abnormalities in chronic Chagas' heart disease. *Arq. Bras. Cardiol* 25:17–25 [PubMed: 4626481]
34. Andrade ZA, Andrade SG, Sadigursky M, Camara EJ. 1988 Pathology of complete atrioventricular block in chronic Chagas' myocarditis. *Rev. Soc. Bras. Med. Trop* 21:7–13 [PubMed: 3231748]
35. Ramos SG, Maturri L, Rossi L, Rossi MA. 1996 Lesions of mediastinal paraganglia in chronic chagasic cardiomyopathy: cause of sudden death? *Am. Heart J* 131:417–20 [PubMed: 8579048]
36. Miranda CH, Figueiredo AB, Maciel BC, Marin-Neto JA, Simoes MV. 2011 Sustained ventricular tachycardia is associated with regional myocardial sympathetic denervation assessed with <sup>123</sup>I-metaiodobenzylguanidine in chronic Chagas cardiomyopathy. *J. Nucl. Med* 52:504–10 [PubMed: 21441532]
37. Rassi A Jr., Marin JAN, Rassi A. 2017 Chronic Chagas cardiomyopathy: a review of the main pathogenic mechanisms and the efficacy of aetiological treatment following the BENznidazole Evaluation for Interrupting Trypanosomiasis (BENEFIT) Trial. *Mem. Inst. Oswaldo Cruz* 112:224–35 [PubMed: 28225900]
38. Gutierrez FR, Guedes PM, Gazzinelli RT, Silva JS. 2009 The role of parasite persistence in pathogenesis of Chagas heart disease. *Parasite Immunol.* 31:673–85 [PubMed: 19825107]
39. Lewis MD, Fortes Francisco A, Taylor MC, Burrell-Saward H, McLatchie AP, et al. 2014 Bioluminescence imaging of chronic *Trypanosoma cruzi* infections reveals tissue-specific parasite dynamics and heart disease in the absence of locally persistent infection. *Cell. Microbiol* 16:1285–300 [PubMed: 24712539]
40. Bonney KM, Engman DM. 2008 Chagas heart disease pathogenesis: one mechanism or many? *Curr. Mol. Med* 8:510–18 [PubMed: 18781958]
41. Hyland KV, Leon JS, Daniels MD, Gafis N, Woods LM, et al. 2007 Modulation of autoimmunity by treatment of an infectious disease. *Infect. Immun* 75:3641–50 [PubMed: 17485457]

42. Hyland KV, Asfaw SH, Olson CL, Daniels MD, Engman DM. 2008 Bioluminescent imaging of *Trypanosoma cruzi* infection. *Int. J. Parasitol* 38:1391–400 [PubMed: 18511053]
43. Lewis MD, Francisco AF, Taylor MC, Jayawardhana S, Kelly JM. 2016 Host and parasite genetics shape a link between *Trypanosoma cruzi* infection dynamics and chronic cardiomyopathy. *Cell. Microbiol* 18:1429–43 [PubMed: 26918803]
44. Lidani KCF, Bavia L, Ambrosio AR, de Messias-Reason IJ. 2017 The complement system: a prey of *Trypanosoma cruzi*. *Front. Microbiol* 8:607 [PubMed: 28473804]
45. Rimoldi MT, Tenner AJ, Bobak DA, Joiner KA. 1989 Complement component C1q enhances invasion of human mononuclear phagocytes and fibroblasts by *Trypanosoma cruzi* trypomastigotes. *J. Clin. Investig* 84:1982–89 [PubMed: 2687332]
46. Joiner K, Sher A, Gaither T, Hammer C. 1986 Evasion of alternative complement pathway by *Trypanosoma cruzi* results from inefficient binding of factor B. *PNAS* 83:6593–97 [PubMed: 2944112]
47. Zingales B 2017 *Trypanosoma cruzi* genetic diversity: something new for something known about Chagas disease manifestations, serodiagnosis and drug sensitivity. *Acta Trop.* 184:38–52 [PubMed: 28941731]
48. Benvenuti LA, Roggerio A, Cavalcanti MM, Nishiya AS, Levi JE. 2017 An autopsy-based study of *Trypanosoma cruzi* persistence in organs of chronic chagasic patients and its relevance for transplantation. *Transpl. Infect. Dis* 19:e12783
49. Hotez PJ, Dumonteil E, Woc-Colburn L, Serpa JA, Bezek S, et al. 2012 Chagas disease: “The new HIV/AIDS of the Americas.” *PLOS Negl. Trop. Dis* 6:e1498 [PubMed: 22666504]
50. Kayama H, Takeda K. 2010 The innate immune response to *Trypanosoma cruzi* infection. *Microbes Infect.* 12:511–17 [PubMed: 20348008]
51. Campos MA, Gazzinelli RT. 2004 *Trypanosoma cruzi* and its components as exogenous mediators of inflammation recognized through Toll-like receptors. *Mediat. Inflamm* 13:139–43
52. Clay GM, Sutterwala FS, Wilson ME. 2014 NLR proteins and parasitic disease. *Immunol. Res* 59:142–52 [PubMed: 24989828]
53. Zamboni DS, Lima-Junior DS. 2015 Inflammasomes in host response to protozoan parasites. *Immunol. Rev* 265:156–71 [PubMed: 25879291]
54. Gurung P, Kanneganti TD. 2016 Immune responses against protozoan parasites: a focus on the emerging role of Nod-like receptors. *Cell. Mol. Life Sci* 73:3035–51 [PubMed: 27032699]
55. Dhiman M, Garg NJ. 2011 NADPH oxidase inhibition ameliorates *Trypanosoma cruzi*-induced myocarditis during Chagas disease. *J. Pathol* 225:583–96 [PubMed: 21952987]
56. Dhiman M, Garg NJ. 2014 P47<sup>phox</sup><sup>-/-</sup> mice are compromised in expansion and activation of CD8<sup>+</sup> T cells and susceptible to *Trypanosoma cruzi* infection. *PLOS Pathog.* 10:e1004516 [PubMed: 25474113]
57. Bogdan C 2015 Nitric oxide synthase in innate and adaptive immunity: an update. *Trends Immunol.* 36:161–78 [PubMed: 25687683]
58. Alvarez MN, Peluffo G, Piacenza L, Radi R. 2011 Intraphagosomal peroxynitrite as a macrophage-derived cytotoxin against internalized *Trypanosoma cruzi*: consequences for oxidative killing and role of microbial peroxiredoxins in infectivity. *J. Biol. Chem* 286:6627–40 [PubMed: 21098483]
59. Piacenza L, Peluffo G, Alvarez MN, Kelly JM, Wilkinson SR, Radi R. 2008 Peroxiredoxins play a major role in protecting *Trypanosoma cruzi* against macrophage- and endogenously-derived peroxynitrite. *Biochem. J* 410:359–68 [PubMed: 17973627]
60. Koo SJ, Chowdhury IH, Szczesny B, Wan X, Garg NJ. 2016 Macrophages promote oxidative metabolism to drive nitric oxide generation in response to *Trypanosoma cruzi*. *Infect. Immun* 84:3527–41 [PubMed: 27698021]
61. Piacenza L, Zago MP, Peluffo G, Alvarez MN, Basombrio MA, Radi R. 2009 Enzymes of the antioxidant network as novel determiners of *Trypanosoma cruzi* virulence. *Int. J. Parasitol* 39:1455–64 [PubMed: 19505468]
62. Zago MP, Hosakote YM, Koo S-J, Dhiman M, Piñeyro MD, et al. 2016 TcI isolates of *Trypanosoma cruzi* exploit the antioxidant network for enhanced intracellular survival in macrophages and virulence in mice. *Infect. Immun* 84:1842–56 [PubMed: 27068090]



63. Pineyro MD, Parodi-Talice A, Arcari T, Robello C. 2008 Peroxiredoxins from *Trypanosoma cruzi*: virulence factors and drug targets for treatment of Chagas disease? *Gene* 408:45–50 [PubMed: 18022330]
64. Gupta S, Bhatia V, Wen J-J, Wu Y, Huang M-H, Garg NJ. 2009 *Trypanosoma cruzi* infection disturbs mitochondrial membrane potential and ROS production rate in cardiomyocytes. *Free Radic. Biol. Med* 47:1414–21 [PubMed: 19686837]
65. Ba X, Gupta S, Davidson M, Garg NJ. 2010 *Trypanosoma cruzi* induces the reactive oxygen species–PARP-1–RelA pathway for up-regulation of cytokine expression in cardiomyocytes. *J. Biol. Chem* 285:11596–606 [PubMed: 20145242]
66. Wan X, Wen JJ, Koo SJ, Liang LY, Garg NJ. 2016 SIRT1–PGC1 $\alpha$ –NF $\kappa$ B pathway of oxidative and inflammatory stress during *Trypanosoma cruzi* infection: benefits of SIRT1-targeted therapy in improving heart function in Chagas disease. *PLOS Pathog.* 12:e1005954 [PubMed: 27764247]
67. Keating SM, Deng X, Fernandes F, Cunha-Neto E, Ribeiro AL, et al. 2015 Inflammatory and cardiac biomarkers are differentially expressed in clinical stages of Chagas disease. *Int. J. Cardiol* 199:451–59 [PubMed: 26277551]
68. Cunha-Neto E, Teixeira PC, Fonseca SG, Bilate AM, Kalil J. 2011 Myocardial gene and protein expression profiles after autoimmune injury in Chagas' disease cardiomyopathy. *Autoimmun. Rev* 10:163–65 [PubMed: 20883825]
69. Garg NJ, Soman KV, Zago MP, Koo SJ, Spratt H, et al. 2016 Changes in proteome profile of peripheral blood mononuclear cells in chronic Chagas disease. *PLOS Negl. Trop. Dis* 10:e0004490 [PubMed: 26919708]
70. Ferreira LR, Ferreira FM, Nakaya HI, Deng X, Cândido DD, et al. 2017 Blood gene signatures of Chagas disease cardiomyopathy with or without ventricular dysfunction. *J. Infect. Dis* 215:387–95 [PubMed: 28003350]
71. Souza PE, Rocha MO, Menezes CA, Coelho JS, Chaves AC, et al. 2007 *Trypanosoma cruzi* infection induces differential modulation of costimulatory molecules and cytokines by monocytes and T cells from patients with indeterminate and cardiac Chagas' disease. *Infect. Immun* 75:1886–94 [PubMed: 17283096]
72. Souza PE, Rocha MO, Rocha-Vieira E, Menezes CA, Chaves AC, et al. 2004 Monocytes from patients with indeterminate and cardiac forms of Chagas' disease display distinct phenotypic and functional characteristics associated with morbidity. *Infect. Immun* 72:5283–91 [PubMed: 15322024]
73. Machado FS, Dutra WO, Esper L, Gollob KJ, Teixeira MM, et al. 2012 Current understanding of immunity to *Trypanosoma cruzi* infection and pathogenesis of Chagas disease. *Semin. Immunopathol* 34:753–70 [PubMed: 23076807]
74. Chowdhury IH, Koo SJ, Gupta S, Liang LY, Bahar B, et al. 2017 Gene expression profiling and functional characterization of macrophages in response to circulatory microparticles produced during *Trypanosoma cruzi* infection and Chagas disease. *J. Innate Immun* 9:203–16 [PubMed: 27902980]
75. Dhiman M, Zago MP, Nunez S, Nunez-Burgio F, Garg NJ. 2012 Cardiac oxidized antigens are targets of immune recognition by antibodies and potential molecular determinants in Chagas disease pathogenesis. *PLOS ONE* 7:e28449 [PubMed: 22238578]
76. Tardieux I, Nathanson MH, Andrews NW. 1994 Role in host cell invasion of *Trypanosoma cruzi*-induced cytosolic-free Ca<sup>2+</sup> transients. *J. Exp. Med* 179:1017–22 [PubMed: 8113670]
77. Wen JJ, Garg NJ. 2008 Mitochondrial generation of reactive oxygen species is enhanced at the Q<sub>o</sub> site of the complex III in the myocardium of *Trypanosoma cruzi*-infected mice: beneficial effects of an antioxidant. *J. Bioenerg. Biomembr* 40:587–98 [PubMed: 19009337]
78. Wen J-J, Garg NJ. 2010 Mitochondrial complex III defects contribute to inefficient respiration and ATP synthesis in the myocardium of *Trypanosoma cruzi*-infected mice. *Antioxid. Redox Signal* 12:27–37 [PubMed: 19624257]
79. Wen JJ, Dhiman M, Whorton EB, Garg NJ. 2008 Tissue-specific oxidative imbalance and mitochondrial dysfunction during *Trypanosoma cruzi* infection in mice. *Microbes Infect.* 10:1201–9 [PubMed: 18675934]



80. Perez-Fuentes R, Guegan JF, Barnabe C, Lopez-Colombo A, Salgado-Rosas H, et al. 2003 Severity of chronic Chagas disease is associated with cytokine/antioxidant imbalance in chronically infected individuals. *Int. J. Parasitol* 33:293–99 [PubMed: 12670514]
81. de Oliveira TB, Pedrosa RC, Filho DW. 2007 Oxidative stress in chronic cardiopathy associated with Chagas disease. *Int. J. Cardiol* 116:357–63 [PubMed: 16859784]
82. Wen J-J, Yachelini PC, Sembaj A, Manzur RE, Garg NJ. 2006 Increased oxidative stress is correlated with mitochondrial dysfunction in chagasic patients. *Free Radic. Biol. Med* 41:270–76 [PubMed: 16814107]
83. Wan X-X, Gupta S, Zago MP, Davidson MM, Dousset P, et al. 2012 Defects of mtDNA replication impaired the mitochondrial biogenesis during *Trypanosoma cruzi* infection in human cardiomyocytes and chagasic patients: the role of Nrf1/2 and antioxidant response. *J. Am. Heart Assoc* 1:e003855 [PubMed: 23316324]
84. Wen J-J, Gupta S, Guan Z, Dhiman M, Condon D, et al. 2010 Phenyl- $\alpha$ -tert-butyl-nitron and benzonidazole treatment controlled the mitochondrial oxidative stress and evolution of cardiomyopathy in chronic chagasic rats. *J. Am. Coll. Cardiol* 55:2499–508 [PubMed: 20510218]
85. Wen JJ, Porter C, Garg NJ. 2017 Inhibition of NFE2L2–ARE pathway by mitochondrial ROS contributes to development of cardiomyopathy and left ventricular dysfunction in Chagas disease. *Antioxid. Redox Signal* 27:550–66 [PubMed: 28132522]
86. Panis C, Mazzuco TL, Costa CZ, Victorino VJ, Tatakihara VL, et al. 2011 *Trypanosoma cruzi*: effect of the absence of 5-lipoxygenase (5-LO)–derived leukotrienes on levels of cytokines, nitric oxide and iNOS expression in cardiac tissue in the acute phase of infection in mice. *Exp. Parasitol* 127:58–65 [PubMed: 20599987]
87. Wen JJ, Wan X, Thacker J, Garg NJ. 2016 Chemotherapeutic efficacy of phosphodiesterase inhibitors in chagasic cardiomyopathy. *JACC Basic Transl. Sci* 1:235–50 [PubMed: 27747306]
88. D'Avila H, Toledo DA, Melo RC. 2012 Lipid bodies: inflammatory organelles implicated in host–*Trypanosoma cruzi* interplay during innate immune responses. *Mediat. Inflamm* 2012:478601
89. Canavaci AM, Sorgi CA, Martins VP, Morais FR, de Sousa EV, et al. 2014 The acute phase of *Trypanosoma cruzi* infection is attenuated in 5-lipoxygenase-deficient mice. *Mediat. Inflamm* 2014:893634
90. Pavanelli WR, Gutierrez FR, Mariano FS, Prado CM, Ferreira BR, et al. 2010 5-lipoxygenase is a key determinant of acute myocardial inflammation and mortality during *Trypanosoma cruzi* infection. *Microbes Infect.* 12:587–97 [PubMed: 20381637]
91. Esper L, Roman-Campos D, Lara A, Brant F, Castro LL, et al. 2012 Role of SOCS2 in modulating heart damage and function in a murine model of acute Chagas disease. *Am. J. Pathol* 181:130–40 [PubMed: 22658486]
92. Tanowitz HB, Mukhopadhyay A, Ashton AW, Lisanti MP, Machado FS, et al. 2011 Microarray analysis of the mammalian thromboxane receptor–*Trypanosoma cruzi* interaction. *Cell Cycle* 10:1132–43 [PubMed: 21364319]
93. Vago AR, Andrade LO, Leite AA, d'Avila Reis D, Macedo AM, et al. 2000 Genetic characterization of *Trypanosoma cruzi* directly from tissues of patients with chronic Chagas disease: differential distribution of genetic types into diverse organs. *Am. J. Pathol* 156:1805–9 [PubMed: 10793092]
94. dos Santos DM, Talvani A, Guedes PM, Machado-Coelho GL, de Lana M, Bahia MT. 2009 *Trypanosoma cruzi*: Genetic diversity influences the profile of immunoglobulins during experimental infection. *Exp. Parasitol* 121:8–14 [PubMed: 18848935]
95. Scharfstein J, Andrade D. 2011 Infection-associated vasculopathy in experimental Chagas disease: pathogenic roles of endothelin and kinin pathways. *Adv. Parasitol* 76:101–27 [PubMed: 21884889]
96. Scharfstein J, Schmitz V, Svensjo E, Granato A, Monteiro AC. 2007 Kininogens coordinate adaptive immunity through the proteolytic release of bradykinin, an endogenous danger signal driving dendritic cell maturation. *Scand. J. Immunol* 66:128–36 [PubMed: 17635790]
97. Scharfstein J, Ramos PIP, Barral-Netto M. 2017 G protein–coupled kinin receptors and immunity against pathogens. *Adv. Immunol* 136:29–84 [PubMed: 28950949]
98. Tanowitz HB, Jelicks LA, Machado FS, Esper L, Qi X, et al. 2011 Adipose tissue, diabetes and Chagas disease. *Adv. Parasitol* 76:235–50 [PubMed: 21884894]

99. Nascimento CR, Andrade D, Carvalho-Pinto CE, Serra RR, Vellasco L, et al. 2017 Mast cell coupling to the kallikrein–kinin system fuels intracardiac parasitism and worsens heart pathology in experimental Chagas disease. *Front. Immunol* 8:840 [PubMed: 28824610]
100. Tarleton RL. 1990 Depletion of CD8<sup>+</sup> T cells increases susceptibility and reverses vaccine-induced immunity in mice infected with *Trypanosoma cruzi*. *J. Immunol* 144:717–24 [PubMed: 2104903]
101. Tarleton RL, Sun J, Zhang L, Postan M. 1994 Depletion of T-cell subpopulations results in exacerbation of myocarditis and parasitism in experimental Chagas' disease. *Infect. Immun* 62:1820–29 [PubMed: 8168945]
102. Tarleton RL, Koller BH, Latour A, Postan M. 1992 Susceptibility of  $\beta$ 2-microglobulin-deficient mice to *Trypanosoma cruzi* infection. *Nature* 356:338–40 [PubMed: 1549177]
103. Sathler-Avelar R, Vitelli-Avelar DM, Eloi-Santos SM, Gontijo ED, Teixeira-Carvalho A, Martins-Filho OA. 2012 Blood leukocytes from benzimidazole-treated indeterminate Chagas disease patients display an overall type-1-modulated cytokine profile upon short-term in vitro stimulation with *Trypanosoma cruzi* antigens. *BMC Infect. Dis* 12:123 [PubMed: 22625224]
104. Guedes PM, Gutierrez FR, Silva GK, Dellalibera-Joviliano R, Rodrigues GJ, et al. 2012 Deficient regulatory T cell activity and low frequency of IL-17-producing T cells correlate with the extent of cardiomyopathy in human Chagas' disease. *PLOS Negl. Trop. Dis* 6:e1630 [PubMed: 22545173]
105. Guo S, Cobb D, Smeltz RB. 2009 T-bet inhibits the in vivo differentiation of parasite-specific CD4<sup>+</sup> Th17 cells in a T cell–intrinsic manner. *J. Immunol* 182:6179–86 [PubMed: 19414771]
106. Cunha-Neto E, Kalil J. 2001 Heart-infiltrating and peripheral T cells in the pathogenesis of human Chagas' disease cardiomyopathy. *Autoimmunity* 34:187–92 [PubMed: 11908776]
107. Dutra WO, Gollob KJ, Pinto-Dias JC, Gazzinelli G, Correa-Oliveira R, et al. 1997 Cytokine mRNA profile of peripheral blood mononuclear cells isolated from individuals with *Trypanosoma cruzi* chronic infection. *Scand. J. Immunol* 45:74–80 [PubMed: 9010503]
108. Gomes JA, Bahia-Oliveira LM, Rocha MO, Martins-Filho OA, Gazzinelli G, Correa-Oliveira R. 2003 Evidence that development of severe cardiomyopathy in human Chagas' disease is due to a Th1-specific immune response. *Infect. Immun* 71:1185–93 [PubMed: 12595431]
109. Da Matta Guedes PM, Gutierrez FR, Maia FL, Milanezi CM, Silva GK, et al. 2010 IL-17 produced during *Trypanosoma cruzi* infection plays a central role in regulating parasite-induced myocarditis. *PLOS Negl. Trop. Dis* 4:e604 [PubMed: 20169058]
110. Martin D, Tarleton R. 2004 Generation, specificity, and function of CD8<sup>+</sup> T cells in *Trypanosoma cruzi* infection. *Immunol. Rev* 201:304–17 [PubMed: 15361249]
111. Mateus J, Perez-Anton E, Lasso P, Egui A, Roa N, et al. 2017 Antiparasitic treatment induces an improved CD8<sup>+</sup> T cell response in chronic chagasic patients. *J. Immunol* 198:3170–80 [PubMed: 28258194]
112. Albareda MC, Laucella SA, Alvarez MG, Armenti AH, Bertochi G, et al. 2006 *Trypanosoma cruzi* modulates the profile of memory CD8<sup>+</sup> T cells in chronic Chagas' disease patients. *Int. Immunol* 18:465–71 [PubMed: 16431876]
113. Cai CW, Blase JR, Zhang X, Eickhoff CS, Hoft DF. 2016 Th17 cells are more protective than Th1 cells against the intracellular parasite *Trypanosoma cruzi*. *PLOS Pathog.* 12:e1005902 [PubMed: 27695083]
114. Rocha Rodrigues DB, dos Reis MA, Romano A, Pereira SADL, Teixeira VDPA, et al. 2012 In situ expression of regulatory cytokines by heart inflammatory cells in Chagas' disease patients with heart failure. *Clin. Dev. Immunol* 2012:361730 [PubMed: 22811738]
115. Cunha-Neto E, Dzau VJ, Allen PD, Stamatou D, Benvenuti L, et al. 2005 Cardiac gene expression profiling provides evidence for cytokinopathy as a molecular mechanism in Chagas' disease cardiomyopathy. *Am. J. Pathol* 167:305–13 [PubMed: 16049318]
116. Ruiz Diaz P, Mucci J, Meira MA, Bogliotti Y, Musikant D, et al. 2015 *Trypanosoma cruzi* trans-sialidase prevents elicitation of Th1 cell response via interleukin 10 and downregulates Th1 effector cells. *Infect. Immun* 83:2099–108 [PubMed: 25754197]

117. Rodriguez-Angulo H, Marques J, Mendoza I, Villegas M, Mijares A, et al. 2017 Differential cytokine profiling in chagasic patients according to their arrhythmogenic-status. *BMC Infect. Dis* 17:221 [PubMed: 28327099]
118. Mateus J, Lasso P, Pavia P, Rosas F, Roa N, et al. 2015 Low frequency of circulating CD8<sup>+</sup> T stem cell memory cells in chronic chagasic patients with severe forms of the disease. *PLOS Negl. Trop. Dis* 9:e3432 [PubMed: 25569149]
119. Arguello RJ, Vigliano C, Cabeza-Meckert P, Viotti R, Garelli F, et al. 2014 Presence of antigen-experienced T cells with low grade of differentiation and proliferative potential in chronic Chagas disease myocarditis. *PLOS Negl. Trop. Dis* 8:e2989 [PubMed: 25144227]
120. Giraldo NA, Bolanos NI, Cuellar A, Guzman F, Uribe AM, et al. 2011 Increased CD4<sup>+</sup>/CD8<sup>+</sup> double-positive T cells in chronic chagasic patients. *PLOS Negl. Trop. Dis* 5:e1294 [PubMed: 21886854]
121. Dutra WO, Martins-Filho OA, Cancado JR, Pinto-Dias JC, Brener Z, et al. 1994 Activated T and B lymphocytes in peripheral blood of patients with Chagas' disease. *Int. Immunol* 6:499–506 [PubMed: 8018591]
122. Higuchi ML, De Moraes CF, Pereira Barreto AC, Lopes EA, Stolf N, et al. 1987 The role of active myocarditis in the development of heart failure in chronic Chagas' disease: a study based on endomyocardial biopsies. *Clin. Cardiol* 10:665–70 [PubMed: 3677499]
123. Dos Santos Virgilio F, Pontes C, Dominguez MR, Ersching J, Rodrigues MM, Vasconcelos JR. 2014 CD8<sup>+</sup> T cell-mediated immunity during *Trypanosoma cruzi* infection: a path for vaccine development? *Mediat. Inflamm* 2014:243786
124. Cunha-Neto E, Kalil J. 1995 Autoimmunity in Chagas' heart disease. *Sao Paulo Med. J* 113:757–66 [PubMed: 8650474]
125. Teixeira AR, Nitz N, Bernal FM, Hecht MM. 2012 Parasite induced genetically driven autoimmune Chagas heart disease in the chicken model. *J. Vis. Exp* 65:e3716
126. Girones N, Carrasco-Marin E, Cuervo H, Guerrero NA, Sanoja C, et al. 2007 Role of *Trypanosoma cruzi* autoreactive T cells in the generation of cardiac pathology. *Ann. N. Y. Acad. Sci* 1107:434–44 [PubMed: 17804572]
127. Bonney KM, Engman DM. 2015 Autoimmune pathogenesis of Chagas heart disease: looking back, looking ahead. *Am. J. Pathol* 185:1537–47 [PubMed: 25857229]
128. Vitelli-Avelar DM, Sathler-Avelar R, Massara RL, Borges JD, Lage PS, et al. 2006 Are increased frequency of macrophage-like and natural killer (NK) cells, together with high levels of NKT and CD4<sup>+</sup>CD25<sup>high</sup> T cells balancing activated CD8<sup>+</sup> T cells, the key to control Chagas' disease morbidity? *Clin. Exp. Immunol* 145:81–92 [PubMed: 16792677]
129. Vitelli-Avelar DM, Sathler-Avelar R, Dias JC, Pascoal VP, Teixeira-Carvalho A, et al. 2005 Chagasic patients with indeterminate clinical form of the disease have high frequencies of circulating CD3<sup>+</sup>CD16<sup>-</sup>CD56<sup>+</sup> natural killer T cells and CD4<sup>+</sup>CD25<sup>High</sup> regulatory T lymphocytes. *Scand. J. Immunol* 62:297–308 [PubMed: 16179017]
130. Mariano FS, Gutierrez FR, Pavanelli WR, Milanezi CM, Cavassani KA, et al. 2008 The involvement of CD4<sup>+</sup>CD25<sup>+</sup> T cells in the acute phase of *Trypanosoma cruzi* infection. *Microbes Infect.* 10:825–33 [PubMed: 18538611]
131. Sales PA Jr., Golgher D, Oliveira RV, Vieira V, Arantes RM, et al. 2008 The regulatory CD4<sup>+</sup>CD25<sup>+</sup>T cells have a limited role on pathogenesis of infection with *Trypanosoma cruzi*. *Microbes Infect.* 10:680–88 [PubMed: 18485782]
132. Bonney KM, Taylor JM, Thorp EB, Epting CL, Engman DM. 2015 Depletion of regulatory T cells decreases cardiac parasitosis and inflammation in experimental Chagas disease. *Parasitol. Res* 114:1167–78 [PubMed: 25576191]
133. Nihei J, Cardillo F, Dos Santos WL, Pontes-de-Carvalho L, Mengel J. 2014 Administration of a non-depleting anti-CD25 monoclonal antibody reduces disease severity in mice infected with *Trypanosoma cruzi*. *Eur. J. Microbiol. Immunol* 4:128–37
134. Calzada JE, Beraun Y, Gonzalez CI, Martin J. 2009 Transforming growth factor beta 1 (TGFβ1) gene polymorphisms and Chagas disease susceptibility in Peruvian and Colombian patients. *Cytokine* 45:149–53 [PubMed: 19136278]

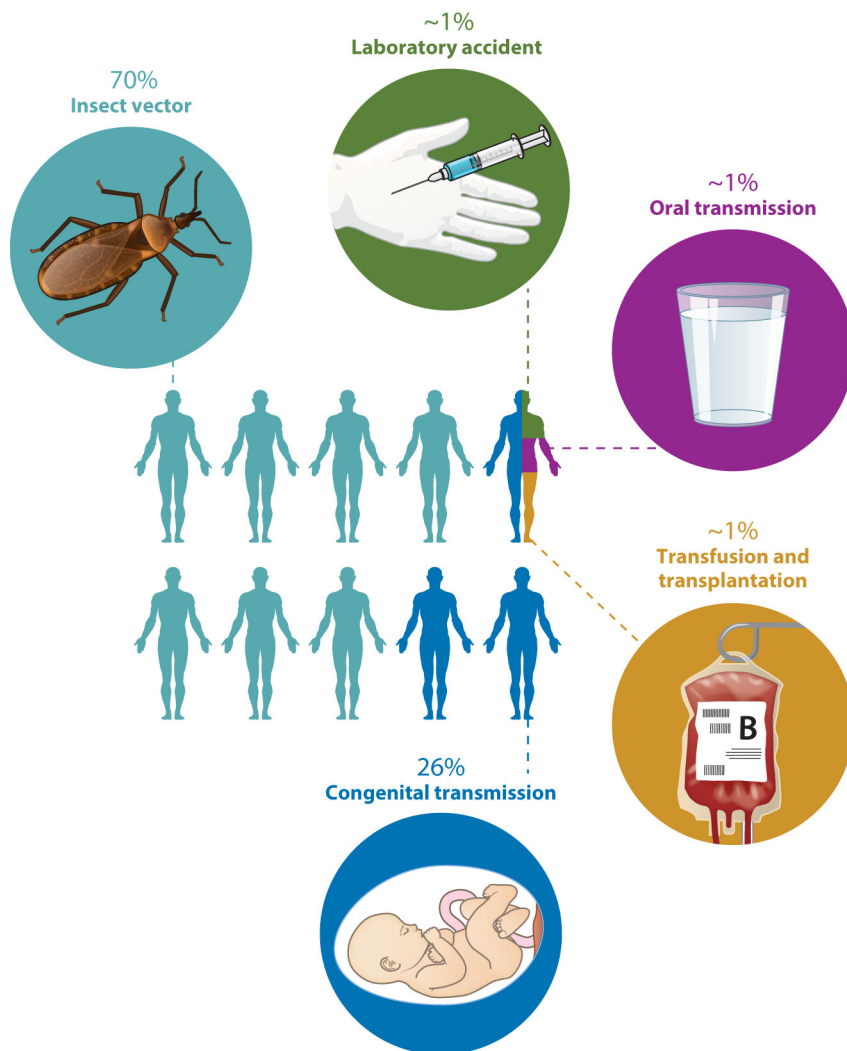
135. Altara R, Mallat Z, Booz GW, Zouein FA. 2016 The CXCL10/CXCR3 axis and cardiac inflammation: implications for immunotherapy to treat infectious and noninfectious diseases of the heart. *J. Immunol. Res* 2016:4396368 [PubMed: 27795961]
136. Gil-Jaramillo N, Motta FN, Favali CB, Bastos IM, Santana JM. 2016 Dendritic cells: a double-edged sword in immune responses during Chagas disease. *Front. Microbiol* 7:1076 [PubMed: 27471496]
137. Saraiva RM, Waghabi MC, Vilela MF, Madeira FS, Sperandio da Silva GM, et al. 2013 Predictive value of transforming growth factor- $\beta$ 1 in Chagas disease: towards a biomarker surrogate of clinical outcome. *Trans. R. Soc. Trop. Med. Hyg* 107:518–25 [PubMed: 23787193]
138. Araujo-Jorge TC, Waghabi MC, Bailly S, Feige JJ. 2012 The TGF- $\beta$  pathway as an emerging target for Chagas disease therapy. *Clin. Pharmacol. Ther* 92:613–21 [PubMed: 22990752]
139. Curvo EO, Ferreira RR, Madeira FS, Alves GF, Chambela MC, et al. 2018 Correlation of transforming growth factor- $\beta$ 1 and tumour necrosis factor levels with left ventricular function in Chagas disease. *Mem. Inst. Oswaldo Cruz* 113:e170440 [PubMed: 29513876]
140. Kierszenbaum F, Cuna WR, Beltz LA, Szein MB. 1990 Trypanosomal immunosuppressive factor: a secretion product(s) of *Trypanosoma cruzi* that inhibits proliferation and IL-2 receptor expression by activated human peripheral blood mononuclear cells. *J. Immunol* 144:4000–4 [PubMed: 2185317]
141. Szein MB, Cuna WR, Kierszenbaum F. 1990 *Trypanosoma cruzi* inhibits the expression of CD3, CD4, CD8, and IL-2R by mitogen-activated helper and cytotoxic human lymphocytes. *J. Immunol* 144:3558–62 [PubMed: 2139458]
142. Costa RP, Gollob KJ, Fonseca LL, Rocha MO, Chaves AC, et al. 2000 T-cell repertoire analysis in acute and chronic human Chagas' disease: differential frequencies of V $\beta$ 5 expressing T cells. *Scand. J. Immunol* 51:511–19 [PubMed: 10792844]
143. Bermejo DA, Amezcua Vesely MC, Khan M, Acosta Rodriguez EV, Montes CL, et al. 2011 *Trypanosoma cruzi* infection induces a massive extrafollicular and follicular splenic B-cell response which is a high source of non-parasite-specific antibodies. *Immunology* 132:123–33 [PubMed: 20875075]
144. Antas PR, Medrano-Mercado N, Torrico F, Ugarte-Fernandez R, Gomez F, et al. 1999 Early, intermediate, and late acute stages in Chagas' disease: a study combining anti-galactose IgG, specific serodiagnosis, and polymerase chain reaction analysis. *Am. J. Trop. Med. Hyg* 61:308–14 [PubMed: 10463685]
145. Jackson Y, Chatelain E, Mauris A, Holst M, Miao Q, et al. 2013 Serological and parasitological response in chronic Chagas patients 3 years after nifurtimox treatment. *BMC Infect. Dis* 13:85 [PubMed: 23406191]
146. Zrein M, Granjon E, Gueyffier L, Caillaudeau J, Liehl P, et al. 2018 A novel antibody surrogate biomarker to monitor parasite persistence in *Trypanosoma cruzi*-infected patients. *PLOS Negl. Trop. Dis* 12:e0006226 [PubMed: 29425201]
147. Cordeiro FD, Martins-Filho OA, Da Costa Rocha MO, Adad SJ, Correa-Oliveira R, Romanha AJ. 2001 Anti-*Trypanosoma cruzi* immunoglobulin G1 can be a useful tool for diagnosis and prognosis of human Chagas' disease. *Clin. Diagn. Lab. Immunol* 8:112–18 [PubMed: 11139203]
148. Galvao LM, Nunes RM, Cancado JR, Brener Z, Krettli AU. 1993 Lytic antibody titre as a means of assessing cure after treatment of Chagas disease: a 10 year follow-up study. *Trans. R. Soc. Trop. Med. Hyg* 87:220–23 [PubMed: 8337734]
149. Gazzinelli RT, Pereira ME, Romanha A, Gazzinelli G, Brener Z. 1991 Direct lysis of *Trypanosoma cruzi*: a novel effector mechanism of protection mediated by human anti-gal antibodies. *Parasite Immunol.* 13:345–56 [PubMed: 1717927]
150. Scott MT, Moyes L. 1982 <sup>75</sup>Se-methionine labelled *Trypanosoma cruzi* blood trypomastigotes: opsonization by chronic infection serum facilitates killing in spleen and liver. *Clin. Exp. Immunol* 48:754–57 [PubMed: 6811174]
151. Gao W, Wortis HH, Pereira MA. 2002 The *Trypanosoma cruzi* trans-sialidase is a T cell-independent B cell mitogen and an inducer of non-specific Ig secretion. *Int. Immunol* 14:299–308 [PubMed: 11867566]

152. Reina-San-Martin B, Degraeve W, Rougeot C, Cosson A, Chamond N, et al. 2000 A B-cell mitogen from a pathogenic trypanosome is a eukaryotic proline racemase. *Nat. Med* 6:890–97 [PubMed: 10932226]
153. Bryan MA, Norris KA. 2010 Genetic immunization converts the *Trypanosoma cruzi* B-cell mitogen proline racemase to an effective immunogen. *Infect. Immun* 78:810–22 [PubMed: 19917711]
154. Laguens RP, Meckert PC, Chambo JG. 1988 Antiheart antibody–dependent cytotoxicity in the sera from mice chronically infected with *Trypanosoma cruzi*. *Infect. Immun* 56:993–97 [PubMed: 3126153]
155. Bonney KM, Taylor JM, Daniels MD, Epting CL, Engman DM. 2011 Heat-killed *Trypanosoma cruzi* induces acute cardiac damage and polyantigenic autoimmunity. *PLOS ONE* 6:e14571 [PubMed: 21283741]
156. Daliry A, Pereira IR, Pereira-Junior PP, Ramos IP, Vilar-Pereira G, et al. 2014 Levels of circulating anti-muscarinic and anti-adrenergic antibodies and their effect on cardiac arrhythmias and dysautonomia in murine models of Chagas disease. *Parasitology* 141:1769–78 [PubMed: 25093253]
157. Florea F, Bernards C, Caproni M, Kleindienst J, Hashimoto T, et al. 2014 Ex vivo pathogenicity of anti-laminin  $\gamma$ 1 autoantibodies. *Am. J. Pathol* 184:494–506 [PubMed: 24300951]
158. Giordanengo L, Gea S, Barbieri G, Rabinovich GA. 2001 Anti-galectin-1 autoantibodies in human *Trypanosoma cruzi* infection: differential expression of this  $\beta$ -galactoside-binding protein in cardiac Chagas' disease. *Clin. Exp. Immunol* 124:266–73 [PubMed: 11422204]
159. Rodeles LM, Vicco MH, Bontempi IA, Siano A, Tonarelli G, et al. 2016 Combined analysis of cross-reacting antibodies anti- $\beta$ 1AR and anti-B13 in advanced stages of Chagas heart disease. *Trop. Med. Int. Health* 21:1545–51 [PubMed: 27699992]
160. Bonney KM, Gifford KM, Taylor JM, Chen CI, Engman DM. 2013 Cardiac damage induced by immunization with heat-killed *Trypanosoma cruzi* is not antibody mediated. *Parasite Immunol.* 35:1–10 [PubMed: 23009341]
161. Talvani A, Rocha MO, Ribeiro AL, Borda E, Sterin-Borda L, Teixeira MM. 2006 Levels of anti-M2 and anti- $\beta$ 1 autoantibodies do not correlate with the degree of heart dysfunction in Chagas' heart disease. *Microbes Infect.* 8:2459–64 [PubMed: 16963301]
162. Lv H, Lipes MA. 2012 Role of impaired central tolerance to  $\alpha$ -myosin in inflammatory heart disease. *Trends Cardiovasc. Med* 22:113–17 [PubMed: 22902177]
163. Cunha-Neto E, Bilate AM, Hyland KV, Fonseca SG, Kalil J, Engman DM. 2006 Induction of cardiac autoimmunity in Chagas heart disease: a case for molecular mimicry. *Autoimmunity* 39:41–54 [PubMed: 16455581]
164. Machado FS, Tyler KM, Brant F, Esper L, Teixeira MM, Tanowitz HB. 2012 Pathogenesis of Chagas disease: time to move on. *Front. Biosci* 4:1743–58
165. Cruz JS, Santos-Miranda A, Sales-Junior PA, Monti-Rocha R, Campos PP, et al. 2016 Altered cardiomyocyte function and *Trypanosoma cruzi* persistence in Chagas disease. *Am. J. Trop. Med. Hyg* 94:1028–33 [PubMed: 26976879]
166. Nagajyothi F, Machado FS, Burleigh BA, Jelicks LA, Scherer PE, et al. 2012 Mechanisms of *Trypanosoma cruzi* persistence in Chagas disease. *Cell. Microbiol* 14:634–43 [PubMed: 22309180]
167. Girones N, Cuervo H, Fresno M. 2005 *Trypanosoma cruzi*-induced molecular mimicry and Chagas' disease. *Curr. Top. Microbiol. Immunol* 296:89–123 [PubMed: 16323421]
168. Teixeira AR, Hecht MM, Guimaro MC, Sousa AO, Nitz N. 2011 Pathogenesis of Chagas' disease: parasite persistence and autoimmunity. *Clin. Microbiol. Rev* 24:592–630 [PubMed: 21734249]
169. Zingales B, Miles MA, Campbell DA, Tibayrenc M, Macedo AM, et al. 2012 The revised *Trypanosoma cruzi* subspecific nomenclature: rationale, epidemiological relevance and research applications. *Infect. Genet. Evol* 12:240–53 [PubMed: 22226704]
170. Morillo CA, Marin-Neto JA, Avezum A, Sosa-Estani S, Rassi A Jr., et al. 2015 Randomized trial of benznidazole for chronic Chagas' cardiomyopathy. *N. Engl. J. Med* 373:1295–306 [PubMed: 26323937]

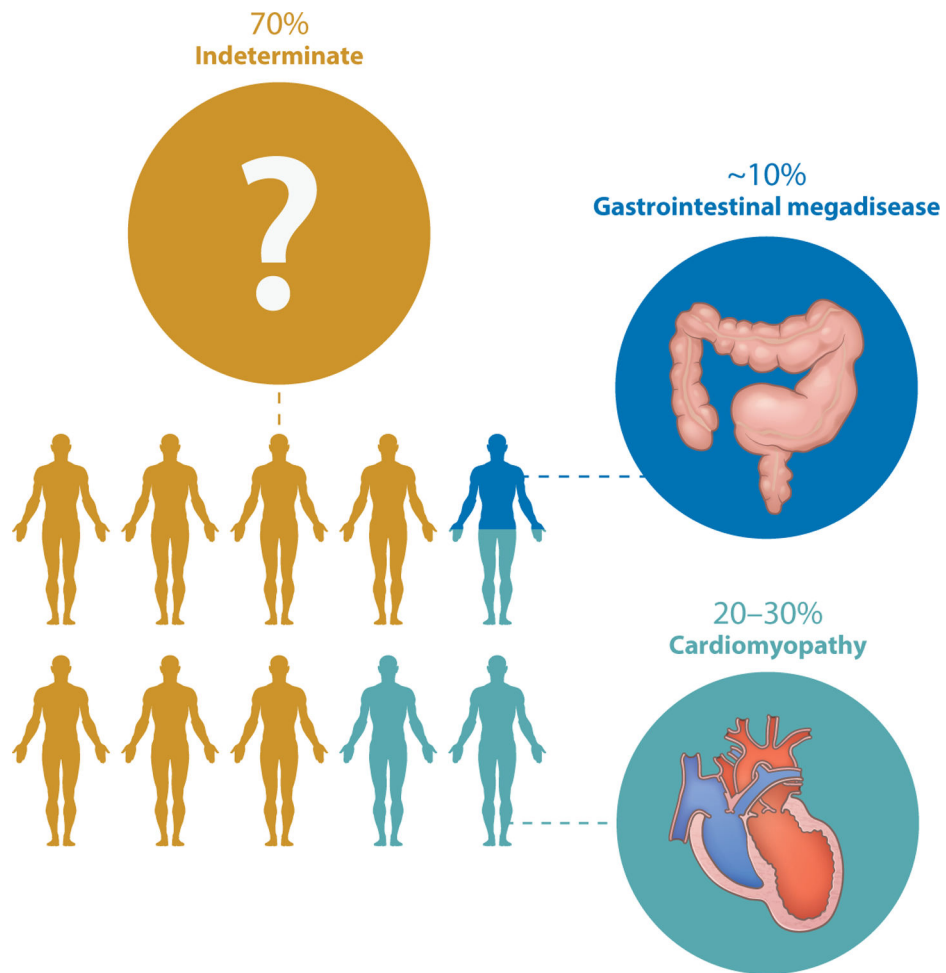


171. Bern C, Montgomery SP. 2009 An estimate of the burden of Chagas disease in the United States. *Clin. Infect. Dis* 49:e52–54 [PubMed: 19640226]
172. Meymandi SK, Forsyth CJ, Soverow J, Hernandez S, Sanchez D, et al. 2017 Prevalence of Chagas disease in the Latin American–born population of Los Angeles. *Clin. Infect. Dis* 64:1182–88 [PubMed: 28329123]
173. Curtis-Robles R, Auckland LD, Snowden KF, Hamer GL, Hamer SA. 2018 Analysis of over 1500 triatomine vectors from across the US, predominantly Texas, for *Trypanosoma cruzi* infection and discrete typing units. *Infect. Genet. Evol* 58:171–80 [PubMed: 29269323]
174. Woody NC, Woody HB. 1955 American trypanosomiasis (Chagas' disease): first indigenous case in the United States. *JAMA* 159:676–77
175. Barth E, Kundrotas L. 2011 Megacolon from Chagas disease in an ancient Texan. *Gastroenterology* 141:35–404
176. Zabalgoitia M, Ventura J, Anderson L, Carey KD, Williams JT, Vandeberg JL. 2003 Morphologic and functional characterization of chagasic heart disease in non-human primates. *Am. J. Trop. Med. Hyg* 68:248–52 [PubMed: 12641420]
177. Meyers AC, Meinders M, Hamer SA. 2017 Widespread *Trypanosoma cruzi* infection in government working dogs along the Texas–Mexico border: discordant serology, parasite genotyping and associated vectors. *PLOS Negl. Trop. Dis* 11:e0005819 [PubMed: 28787451]
178. Cantey PT, Stramer SL, Townsend RL, Kamel H, Ofafa K, et al. 2012 The United States *Trypanosoma cruzi* Infection Study: evidence for vector-borne transmission of the parasite that causes Chagas disease among United States blood donors. *Transfusion* 52:1922–30 [PubMed: 22404755]
179. Garcia MN, Aguilar D, Gorchakov R, Rossmann SN, Montgomery SP, et al. 2015 Evidence of autochthonous Chagas disease in southeastern Texas. *Am. J. Trop. Med. Hyg* 92:325–30 [PubMed: 25371187]
180. Kransdorf EP, Fishbein MC, Czer LS, Patel JK, Velleca A, et al. 2016 Pathology of chronic Chagas cardiomyopathy in the United States: a detailed review of 13 cardiectomy cases. *Am. J. Clin. Pathol* 146:191–98 [PubMed: 27425387]
181. Cardillo F, de Pinho RT, Antas PR, Mengel J. 2015 Immunity and immune modulation in *Trypanosoma cruzi* infection. *Pathog. Dis* 73:ftv082 [PubMed: 26438729]
182. Coates BM, Sullivan DP, Makanji MY, Du NY, Olson CL, et al. 2013 Endothelial transmigration by *Trypanosoma cruzi*. *PLOS ONE* 8:e81187 [PubMed: 24312535]

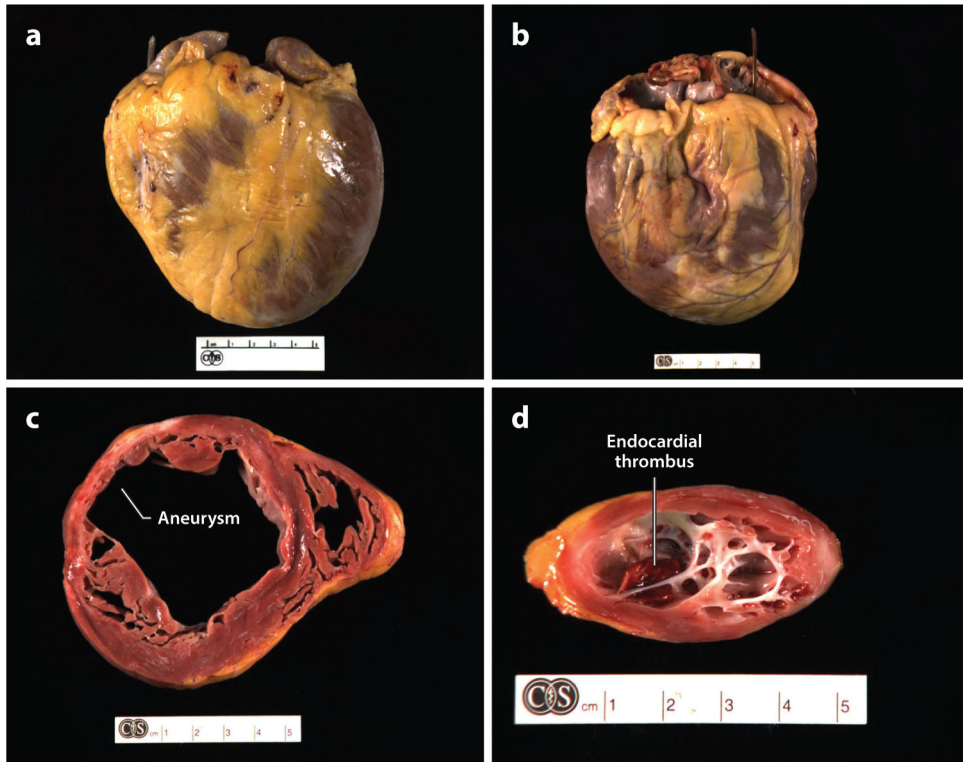




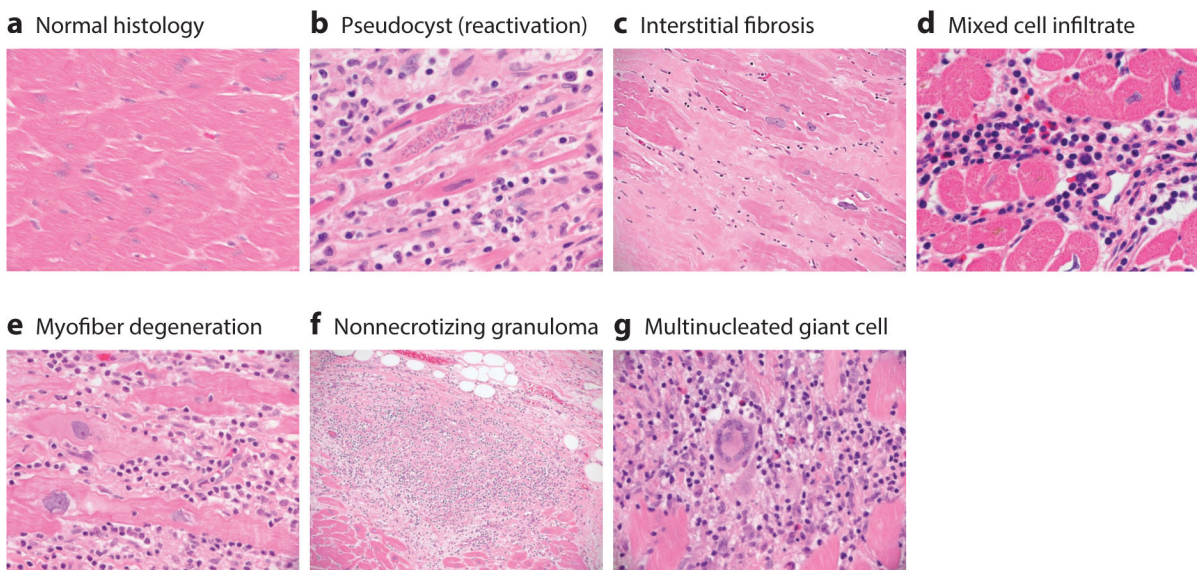
**Figure 1.** Modes of transmission of *Trypanosoma cruzi*. Approximately 70% of infections occur when infected reduviid bugs feed on or otherwise come into contact with people. The bug’s feces contain infective metacyclic trypomastigotes, which can enter the body through any break in the skin, for example the bite wound, or through any mucous membrane. Approximately 26% of infections are due to maternal–fetal transmission during pregnancy. A few infections occur as a result of laboratory accidents, the consumption of contaminated food or beverages, or blood transfusion or the transplantation of tissue from an infected donor. Oral transmission can occur when fresh juice is prepared by crushing plants such as sugar cane. If there are infected reduviids in the plants, trypomastigotes end up in the juice when the plants (and bugs) are crushed. Transmission by blood transfusion was a major problem before blood suppliers in many countries, including the United States, began screening for *T. cruzi*.



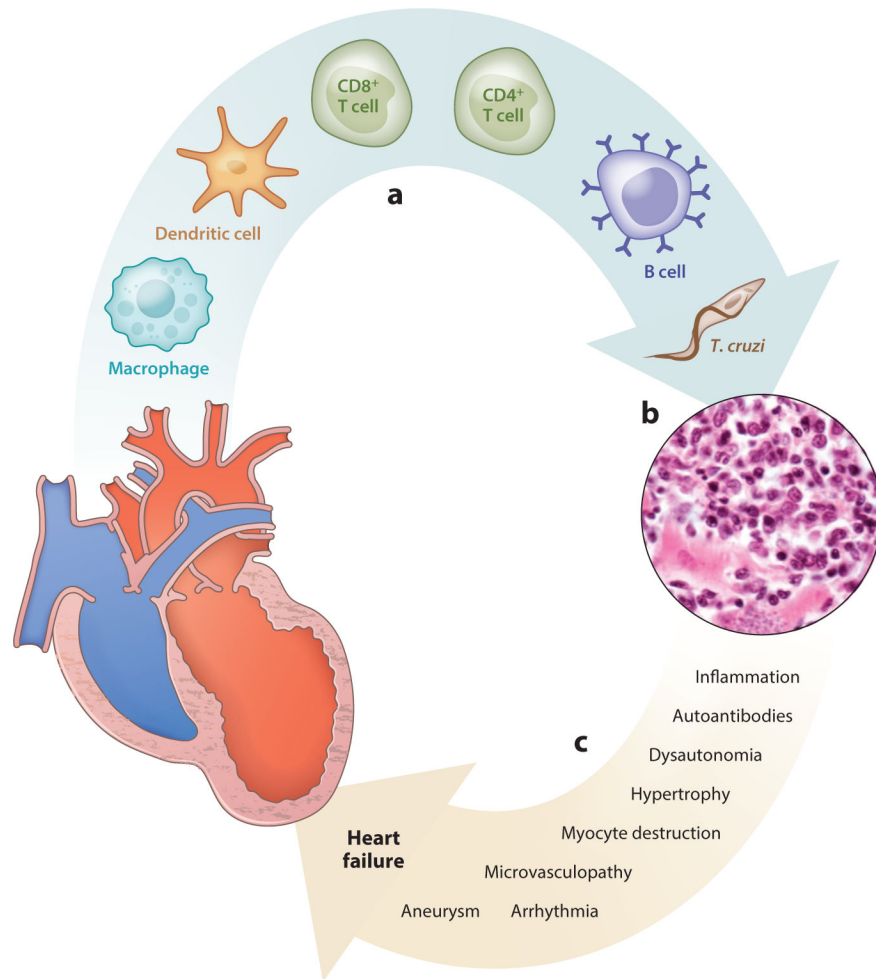
**Figure 2.** Outcomes of chronic *Trypanosoma cruzi* infection. Approximately 70% of *T. cruzi*-infected people live normal lives without developing any adverse sequelae of infection. Approximately 10% develop megaesophagus or megacolon, and 20–30% develop cardiomyopathy. A tiny number of people die during acute infection from fatal cardiac dysrhythmias (not shown), and a few others develop additional sequelae involving other systems.



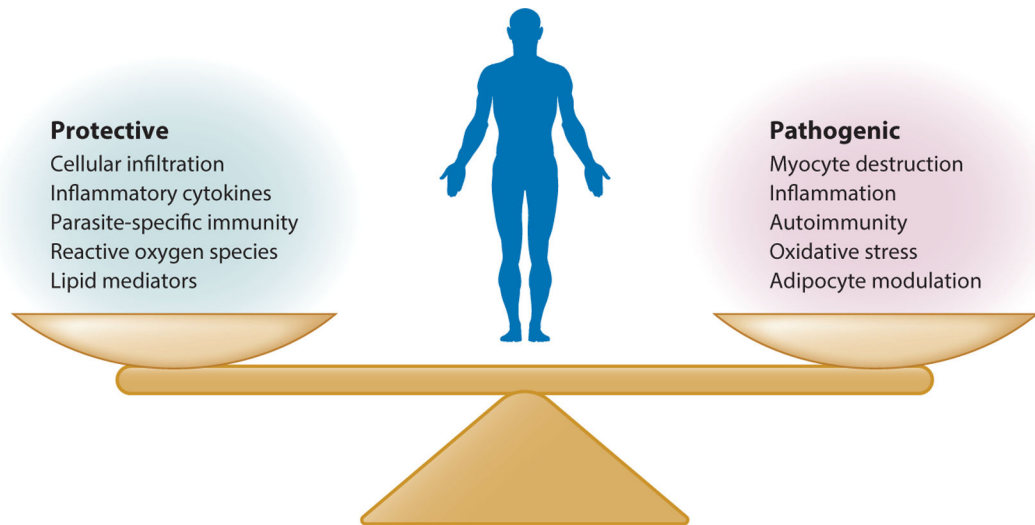
**Figure 3.** Gross pathology of Chagas heart disease. Examples of explanted hearts from patients with chronic Chagas cardiomyopathy highlight the characteristic features of (a,b) cardiomegaly, multichamber dilatation, and epicardial scarring. Cross-sections through (c) the ventricles and (d) left apex reveal patchy myocardial, endocardial, and epicardial fibrosis. Aneurysms are frequently present in different stages of development and are visible in the 10 o'clock position in panel c and viewed from above in panel d. In the aneurysm in panel d, the thinning of the ventricular wall can be appreciated, and an apical endocardial thrombus (*deep red*) is visible in the aneurysm cavity. All explants are from Cedars-Sinai Medical Center in Los Angeles.



**Figure 4.** Microscopic pathology of Chagas heart disease. Essentially, every possible histologic picture of *Trypanosoma cruzi* infection can be observed by examining the hearts of patients with acute, chronic, or chronic reactivation (e.g., upon immunosuppression) disease. (a) Normal cardiac histology. (b) Heart section with mononuclear cell infiltration, myofibrillar degeneration, fibrosis, and an amastigote pseudocyst, commonly seen in reactivation disease. (c) Massive interstitial fibrosis replacing depleted myocytes. (d) A mixed cell infiltrate comprising histiocytes, lymphocytes, eosinophils, and mast cells. (e) In addition to the chronic inflammation described in the earlier panels, myocardial fibers show evidence of degeneration, with expanded basophilic cytoplasm, corrugated cell membranes, and nuclei with degenerative features, including open and clumped chromatin and irregular nuclear borders. (f) Nonnecrotizing granulomas are occasionally observed. (g) Multinucleated giant cells are commonly found. We emphasize that *T. cruzi* amastigotes are rarely observed, except in the case of reactivation (b).



**Figure 5.** Pathogenesis of Chagas heart disease. (a) A variety of cells, including *Trypanosoma cruzi* parasites, infiltrate the myocardium, which develops (b) histopathology characterized by mononuclear cell infiltration, edema, myocyte destruction, and fibrosis. Parasites are typically not observed in chronic infection. (c) Mechanisms are listed that may lead to progressive cardiac dysfunction that progresses to heart failure during *T. cruzi* infection.



**Figure 6.** Protective and pathogenic responses to *Trypanosoma cruzi* infection. The various protective and pathogenic responses are shown. Importantly, many protective processes can also have deleterious effects, which is a general challenge in mounting innate and adaptive responses to pathogens.