



OPEN **Author Correction: Cooperative nutrient accumulation sustains growth of mammalian cells**

Sungmin Son, Mark M. Stevens, Hui Xiao Chao, Carson Thoreen, Aaron M. Hosios, Lawrence D. Schweitzer, Yaochung Weng, Kris Wood, David Sabatini, Matthew G. Vander Heiden & Scott Manalis

Correction to: *Scientific Reports* <https://doi.org/10.1038/srep17401>, published online 01 December 2015.

This Article contains an error. In Supplemental Figure 9A, the immunoblot of P-PKA-Ca following glutamine depletion was inadvertently duplicated from the immunoblot of P-PKA-Ca following glucose depletion. The correct Supplementary Figure 9 appears below as Figure 1.

The full blots for figures used appear below as Figure 2.

Published online: 21 July 2020

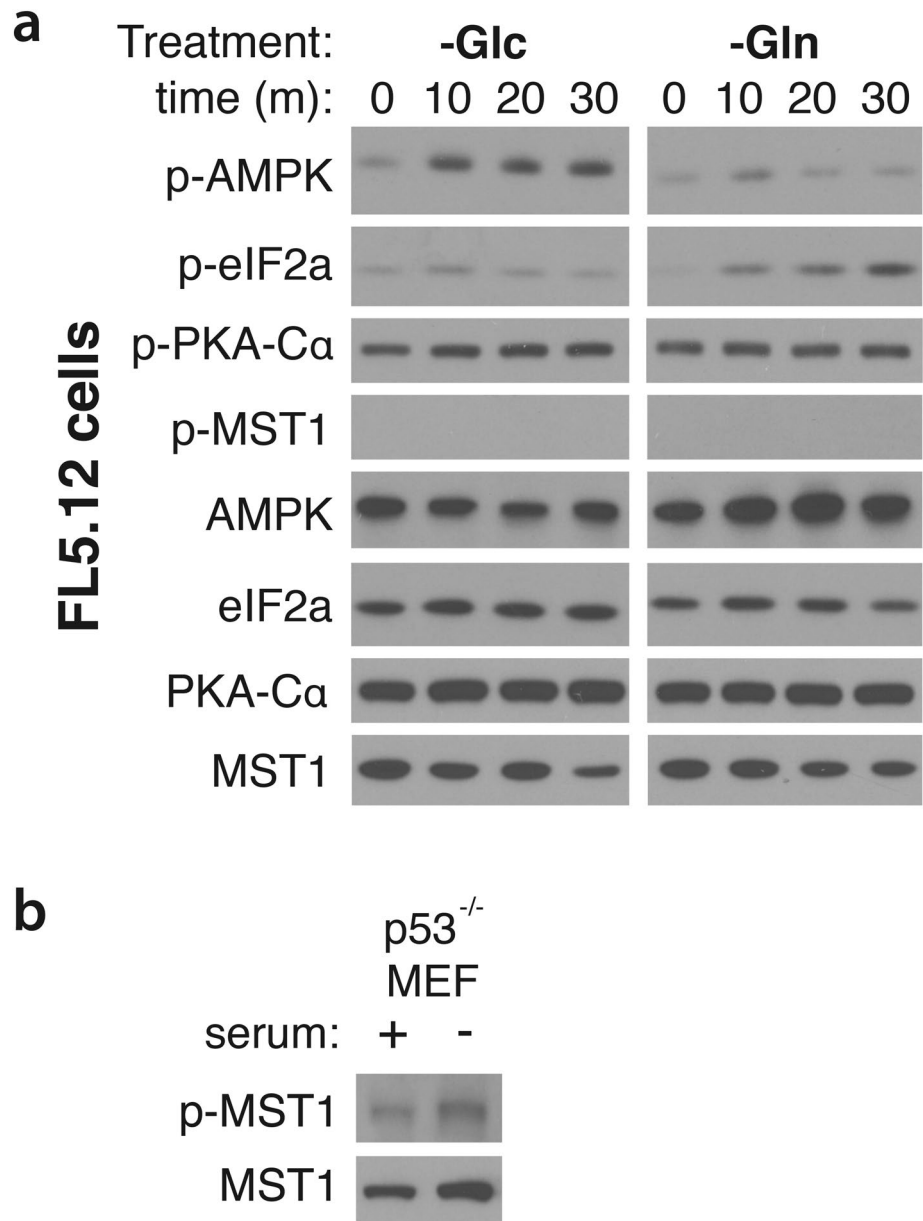


Figure 1.

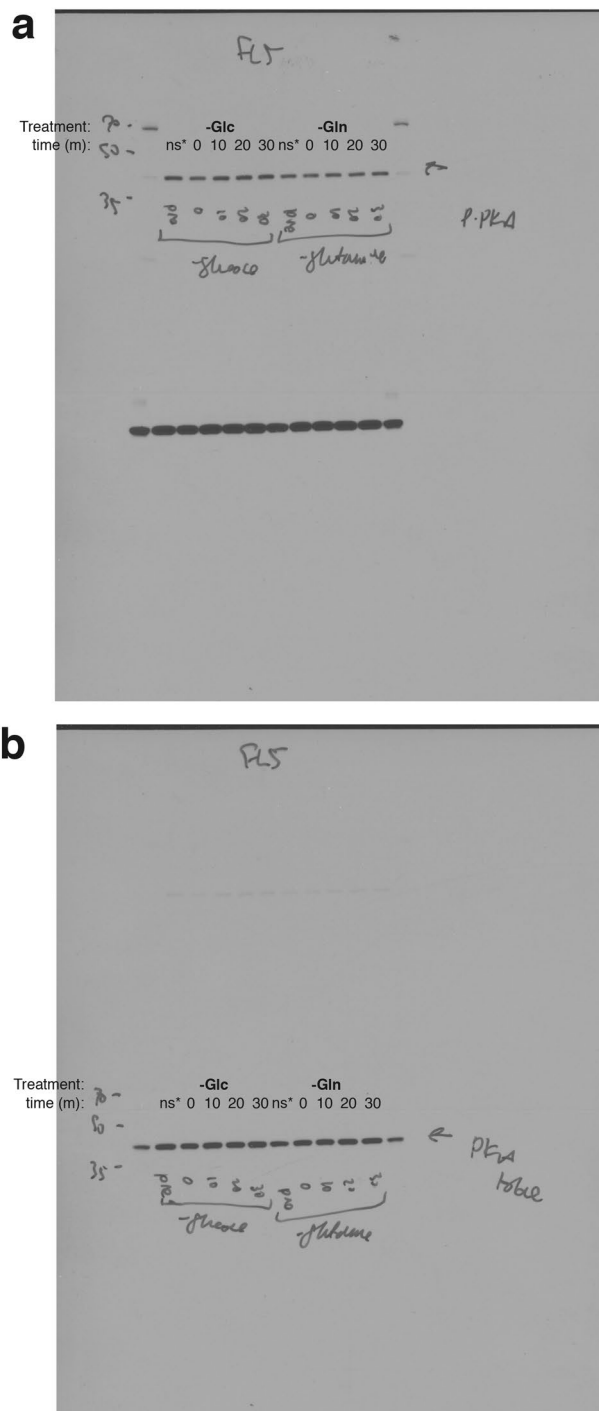



Figure 2. Original scan immunoblots used in Supplemental Fig. 9a. **(a)** exposure of uncropped immunoblots used for p-PKA-Ca. **(b)** exposure of uncropped immunoblots used for total PKA-Ca. ns*: non-stimulated, not used in the final figure.

 **Open Access** This article is licensed under a Creative Commons Attribution 4.0 International License, which permits use, sharing, adaptation, distribution and reproduction in any medium or format, as long as you give appropriate credit to the original author(s) and the source, provide a link to the Creative Commons license, and indicate if changes were made. The images or other third party material in this article are included in the article's Creative Commons license, unless indicated otherwise in a credit line to the material. If material is not included in the article's Creative Commons license and your intended use is not permitted by statutory regulation or exceeds the permitted use, you will need to obtain permission directly from the copyright holder. To view a copy of this license, visit <http://creativecommons.org/licenses/by/4.0/>.

© The Author(s) 2020