



OPEN

Molecular malaria surveillance using a novel protocol for extraction and analysis of nucleic acids retained on used rapid diagnostic tests

Etienne A. Guirou^{1,2,8}, Tobias Schindler^{1,2,8}✉, Salome Hosch^{1,2}, Olivier Tresor Donfack³, Charlene Aya Yoboue^{1,2}, Silvan Krähenbühl^{1,2}, Anna Deal^{1,2}, Glenda Cosi^{1,2}, Linda Gondwe^{1,2,4}, Grace Mwangoka⁴, Heavenlight Masuki⁵, Nahya Salim⁵, Maxmillian Mpina^{1,2,4}, Jongo Said⁴, Salim Abdulla⁴, Stephen L. Hoffman⁶, Bonifacio Manguire Nlavo⁷, Carl Maas⁷, Carlos Cortes Falla³, Wonder P. Phiri³, Guillermo A. Garcia³, Marcel Tanner^{1,2} & Claudia Daubenberger^{1,2}✉

The use of malaria rapid diagnostic tests (RDTs) as a source for nucleic acids that can be analyzed via nucleic acid amplification techniques has several advantages, including minimal amounts of blood, sample collection, simplified storage and shipping conditions at room temperature. We have systematically developed and extensively evaluated a procedure to extract total nucleic acids from used malaria RDTs. The co-extraction of DNA and RNA molecules from small volumes of dried blood retained on the RDTs allows detection and quantification of *P. falciparum* parasites from asymptomatic patients with parasite densities as low as 1 Pf/μL blood using reverse transcription quantitative PCR. Based on the extraction protocol we have developed the ENAR (Extraction of Nucleic Acids from RDTs) approach; a complete workflow for large-scale molecular malaria surveillance. Using RDTs collected during a malaria indicator survey we demonstrated that ENAR provides a powerful tool to analyze nucleic acids from thousands of RDTs in a standardized and high-throughput manner. We found several, known and new, non-synonymous single nucleotide polymorphisms in the propeller region of the kelch 13 gene among isolates circulating on Bioko Island, Equatorial Guinea.

Abbreviations

Pf	<i>P. falciparum</i>
pfk13	<i>Pf</i> Kelch 13
RDT	Rapid diagnostic test
DBS	Dried blood spot
ENAR	Extraction of nucleic acids from RDT
CHMI	Controlled human malaria infection
NA	Nucleic acid
NAT	Nucleic acid amplification technique

¹Department of Medical Parasitology and Infection Biology, Swiss Tropical and Public Health Institute, Basel, Switzerland. ²University of Basel, Basel, Switzerland. ³Medical Care Development International, Malabo, Equatorial Guinea. ⁴Ifakara Health Institute, Bagamoyo Branch, United Republic of Tanzania. ⁵Department of Paediatrics and Child Health, Muhimbili University of Health and Allied Sciences, Dar Es Salaam, Tanzania. ⁶Sanaria Inc, Rockville, MD, USA. ⁷Marathon EG Production Ltd, Malabo, Equatorial Guinea. ⁸These authors contributed equally: Etienne A. Guirou and Tobias Schindler. ✉email: tobias.schindler@swisstph.ch; claudia.daubenberger@swisstph.ch

PfIS	WHO International standard for <i>P. falciparum</i> NAT
LOD	Limit of detection
RT	Room temperature
qPCR	Quantitative polymerase chain reaction
PlasQ	Multiplex qPCR assay for quantification of <i>P. falciparum</i> and <i>Plasmodium</i> spp. Parasites
SNP	Single nucleotide polymorphism
Pf/μL	<i>Pf</i> Parasites per μL blood

Malaria remains a global public health issue with an estimated 228 million cases resulting in an estimated 405,000 deaths in 2018¹. *P. falciparum* (*Pf*) is the most pathogenic malaria species accounting for the vast majority of malaria cases and deaths. Malaria surveillance, the continuous and systematic collection, analysis and interpretation of epidemiological data, is the core monitoring and evaluation tool for malaria control programs, and provides the framework for effective allocation of resources². A critical surveillance measure, which closely reflects malaria transmission intensity, is the parasite rate; the proportion of the population found to carry parasites in their peripheral blood^{3,4}. Malaria rapid diagnostic tests (RDTs) are the most widely used technique to measure parasite rates in endemic countries. In sub-Saharan Africa, RDTs have almost completely replaced light microscopy for malaria diagnosis, with an estimated 75% of malaria tests conducted using RDTs in 2017¹. RDTs are relatively low cost, provide fast result turnaround time, are widely available and easy to use. However, there are also disadvantages including low sensitivity, resulting in poor performance among asymptomatic individuals⁵ and the widespread emergence of *pfhrp2* deletions in certain regions⁶ whereby RDTs fail to detect malaria infection.

Nucleic amplification techniques (NATs), such as polymerase chain reaction (PCR), not only show higher sensitivities than RDTs^{5,7} but also allow further characterization of *Pf* isolates using molecular markers. Surveillance of drug-resistant *Pf* strains, based on analysis of resistance-associated molecular markers, is a widely used and valuable epidemiological tool⁸. In sub-Saharan Africa, malaria treatment relies heavily on artemisinin-based combination therapy (ACT). The implementation of surveillance programs for early detection of emerging artemisinin-resistant *Pf* strains will be the key to prevent the spread across the continent⁹. Artemisinin-resistant *Pf* strains were first reported in Cambodia^{10,11} and remain a public health concern in South East Asia but have not yet been found to be widespread in Africa, South America or Oceania¹². Non-synonymous mutations in the propeller region of the *Pf* kelch 13 gene (*pfk13*) were discovered as molecular markers for artemisinin resistance¹³.

Residual blood from RDTs are an ideal source for nucleic acids (NAs) to be used for NAT-based resistance markers screening and present several advantages, including simplicity and cost-effectiveness of sample collection, as well as simplified storage and shipping conditions at room temperature (RT). Over the past decade, several reports have been published describing the use of DNA extracted from used RDTs for molecular analysis of malaria parasites (studies summarized in Supplementary Table S1)^{14–24}. However, most studies that tried to address the question of using RDTs as source of DNA were conducted with small sample sizes and focused on demonstrating the feasibility of extracting DNA rather than fitting this approach for molecular surveillance of malaria at larger scale. We identified three key areas that are critical to develop a surveillance tool based on molecular analysis of used RDTs: (i) accessing a representative collection of RDTs and creating an effective selection and sorting strategies for RDTs of interest. (ii) high-throughput extraction and analysis of NAs from RDTs with minimal hands-on time and focus on reproducibility and quality control throughout the entire extraction process. (iii) increasing recovery of *Pf* NAs during the extraction process in order to include asymptomatic individuals with low parasite density infections.

This manuscript outlines an overall strategy and the protocols for collecting, sorting and processing RDTs to extract the retained NA at large-scale in order to screen for single nucleotide polymorphisms (SNPs) in an artemisinin-resistance molecular marker in a dataset of thousands of healthy, malaria asymptomatic individuals. We systematically developed and extensively evaluated a procedure to extract NA from RDT. The “Extraction of Nucleic Acids from RDTs” (referred to as ENAR) approach is supported by custom-made software solutions that allow the analysis of thousands of RDTs in a standardized, reproducible and high-throughput manner.

We developed the ENAR approach in Tanzania and implemented the ENAR approach within Bioko Island Malaria Elimination Project’s (BIMEP) 2018 malaria indicator survey (MIS) conducted on Bioko Island, Equatorial Guinea. BIMEP is an island-wide intervention resulting in a substantial reduction in malaria, achieving a reduction in parasitemia of around 75% over the past 15 years²⁵. Despite these achievements, malaria transmission remains stable on Bioko for a number of reasons, and recently a *Pf* isolate of African origin with artemisinin-resistance, including a novel non-synonymous mutation in *pfk13*, was identified in a 43-year-old man returning to China from Equatorial Guinea²⁶. This reality underlies the importance of incorporating molecular techniques as monitoring and evaluation tools in malaria control programming.

Results

Blood stored on RDTs is a source of *Pf* DNA. First, we conducted a literature search of reports describing the use of NA extracted from RDTs as input templates for NAT-based detection of malaria parasites (Supplementary Table S1). A total of 11 studies were published between 2006 and 2019. All studies were limited to the extraction of DNA and used a variety of different extraction methods. Most extraction protocols were based either on the Chelex method (n=7) or silica column-based DNA extraction kits (n=6). One study extracted DNA from the entire RDT strip, all other studies used only predefined fragments of the RDT strip. These previous studies demonstrated that *Pf* DNA can be recovered from RDTs and amplified by NATs. Several studies genotyped drug resistance associated markers using sanger or next generation sequencing.

As the majority of these studies extracted DNA from RDTs of febrile clinical malaria cases, indicating high parasite densities, we first conducted a study to test feasibility of detecting *Pf* DNA from RDTs of asymptomatic

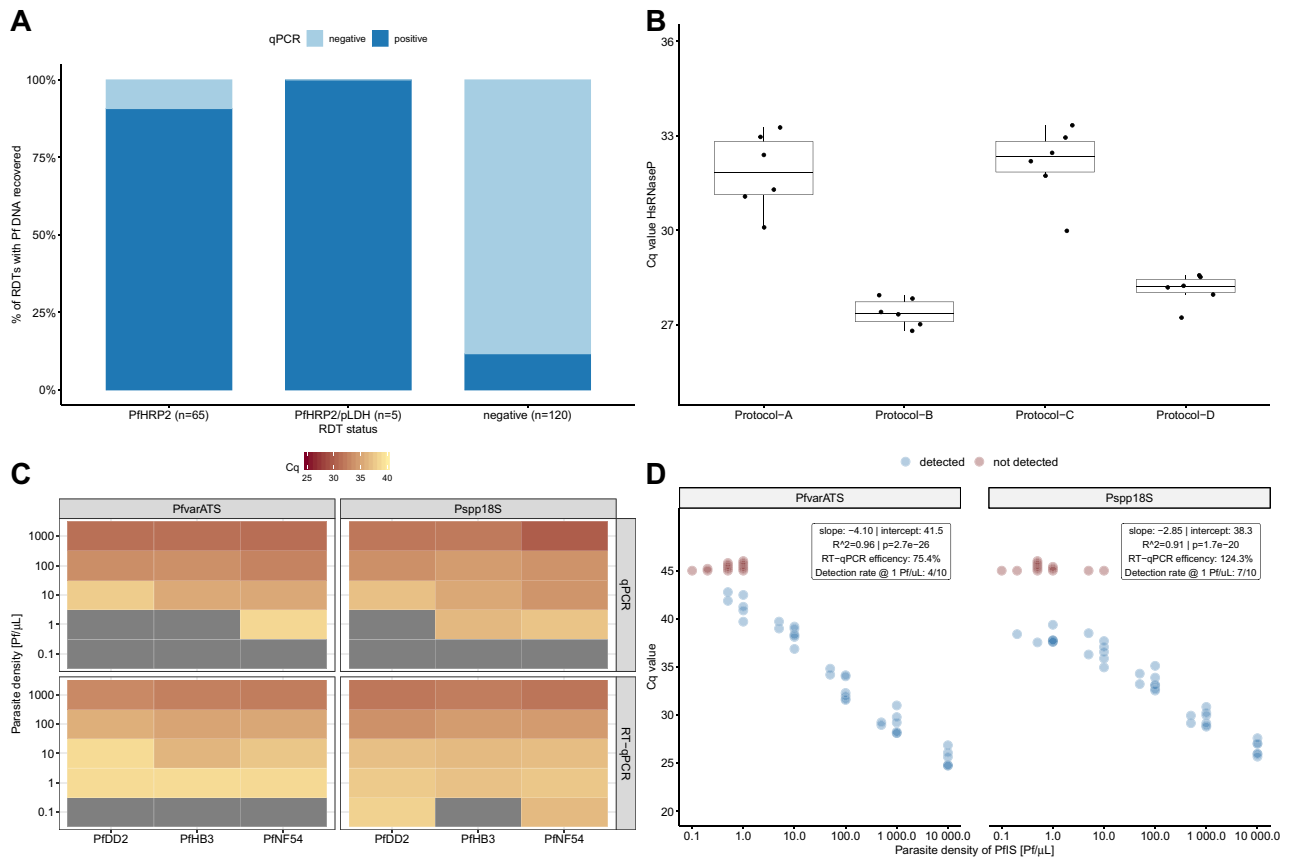


Figure 1. Extraction and detection of *Pf* NAs from used RDTs. **(A)** Recovery rates of *Pf* DNA from RDTs collected in asymptomatic Tanzanian school children. **(B)** Comparison of extraction performance of four protocols based on Cq values of the human *masep* gene. **(C)** Association of parasite densities and Cq values of freshly prepared *Pf* strains (PfDD2, PfHB3 and PfNF54). Gray colour indicates failed detection. **(D)** Correlation between parasite densities of serially diluted PfIS and Cq values for PlasQ targets. Red coloured dots represent samples where amplification failed.

individuals. We employed RDTs collected in a malaria survey conducted among asymptomatic children from three primary schools in the Mkuranga district of Coastal Tanzania. DNA was extracted from 190 RDTs and *Pf* DNA was recovered from 90.8% (59/65) of PfHRP2-positive RDTs, from 100% (5/5) of PfHRP2/pLDH-positive RDTs and from 11.7% (14/120) negative RDTs (Fig. 1A).

Encouraged by the outcome of the school-based survey, we aimed to improve the extraction method from RDTs. As a proxy for the amount of extracted NAs, the Cq value of the human *masep* gene (HsRNaseP target), which is the internal control of the previously published PlasQ assay, was used to assess the overall performance of four different extraction procedures (Fig. 1B). Side-by-side comparison of the four extraction procedures, named Protocol A through D, confirmed the superior performance of protocols B and D. Considering the costs and the fact that protocol D co-extracts RNA, we developed protocol D, which we renamed ENAR (Extraction of Nucleic Acids from RDTs). In order to identify the part of the RDT strip where most *Pf* NAs accumulate, we analyzed the sample pad (proximal part), the detection area (middle part), and the absorption pad (distal part) using ENAR. In RDTs probed with fresh blood, *Pf* NAs are found in all three parts, with more than 87% of the total extracted DNA concentrated in the middle part. RDTs spiked with frozen blood that is associated with red blood cell lysis resulted in an equal distribution of NA along the entire RDT strip (Supplementary Figure S1).

Detection and quantification of *Pf* parasites based on ENAR protocol. We evaluated the ENAR protocol with cultured *Pf* strains from different geographical locations including the strains PfDD2 (South East Asia), PfHB3 (Central America) and PfNF54 (Africa) by preparing ten-fold serial dilutions in whole blood with parasite densities corresponding to 0.1–1,000 Pf/μL. RDTs were spiked with 5 μL of diluted cultures, the NAs extracted by ENAR, and analyzed by qPCR and RT-qPCR (Fig. 1C). Only the RT-qPCR assay resulted in detection of all three strains with the 1 Pf/μL parasite density. Furthermore, the Psp18S-based RT-qPCR assay even detected two (PfDD2 and PfNF54) out of the three *Pf* strains at a concentration of 0.1 Pf/μL. This result demonstrates that the ENAR clearly co-extracts DNA and RNA. The *Pf* 18S ribosomal RNA, detected by the Psp18S RT-qPCR assay, is constantly and highly expressed during the life cycle of the parasite^{27,28}, while the acidic terminal sequence of the var genes (PfEMP1), detected by the PfvarATS assay, is associated with lower RNA levels²⁹. The ability of the ENAR protocol to co-extract DNA and RNA was also demonstrated with the following

CHMI-1 (2016) > 18 months storage	CHMI-2 (2018) < 1 month storage
BinaxNOW Malaria RDT	CareStart Malaria (Pf/PAN) Combo
71	50
20 µL	5 µL
605 (596–616)	18 (10–48)
RT	RT
14.0 (10.5–18.0)	12.7 (9.0–18.0)
38.0% (27/71)	62.0% (31/50)
4.7 (0.05–840.0)	0.3 (0.01–1,041.0)

Table 1. Overview of blood samples collected during two CHMIs and stored on RDTs.

experiment: Five µL of an in vitro-generated stage V gametocyte culture was applied onto the RDTs and stored at RT for three weeks before NAs were extracted by ENAR. The gametocyte-specific transcript PF3D7_0630000 was reverse transcribed and amplified using a published assay which does not require DNase treatment for specific detection of gametocytes³⁰. Extracted NAs from 5 µL undiluted and 1:100 diluted stage V gametocytes specifically amplified the gametocyte marker, while the control without a reverse transcription step did not result in amplification (Supplementary Figure S2).

The PfIS, an international standard with known parasite density, was used to explore the feasibility of quantifying *Pf* parasites extracted by ENAR. In total, 51 individual RDTs containing 5 µL PfIS with different parasite densities, ranging from 0.1 to 10,000 Pf/µL of the PfIS, were prepared. A high reproducibility and reverse correlation between parasite densities and Cq values were observed for both targets, the *Pf* specific PfvarATS and the pan-*Plasmodium* target Psp18S (Fig. 1D). Based on the slope, RT-qPCR efficiencies of 75.4% and 124.3% were calculated for PfvarATS and Psp18S, respectively. RDTs negative for PlasQ assay amplification (Cq > 45, colored in red) carried mostly dilutions representing parasite densities ≤ 1 parasite/µL. Two exceptions were observed where the Psp18S assay failed to amplify two RDTs probed with higher parasitemia levels (5 and 10 Pf/µL, respectively). RDTs probed with 1 parasite/µL were detected in 4 (PfvarATS) and 7 (Psp18S) out of 10 RDTs tested.

In summary, based on experiments conducted with standardized *Pf* reference samples we conclude that ENAR is able to recover both DNA and RNA, which results in an increased sensitivity of the RT-qPCR compared to the qPCR-based detection methods. The lower limit of detection (LOD) for RT-qPCR-based amplification of NAs from RDTs is around 1 Pf/µL, although 10× lower parasitemia levels can be detected as demonstrated with freshly cultured *Pf* parasites. RDTs are a reliable source of NAs and extraction by ENAR followed by analysis using RT-qPCR assays allows quantification of *Pf* parasites.

Evaluation of ENAR protocol using controlled human malaria infection studies as a platform. Blood collected from volunteers undergoing Controlled Human Malaria Infection (CHMI) studies represent well-characterized samples as the parasite strain, the timing and dosing of infection is known. Therefore, blood samples collected from volunteers undergoing CHMI are well suited for developing and validating novel malaria diagnostic tools³¹.

The ENAR protocol was evaluated with venous blood samples collected during CHMIs assessing the efficacy of Sanaria's PfSPZ Vaccine in clinical trials in Bagamoyo, Tanzania in malaria pre-exposed volunteers. RDTs were spiked with blood and stored as part of two CHMIs, the first of which was conducted in 2016 (CHMI-1) and the second in 2018 (CHMI-2). As part of the standard diagnostic procedures during the CHMIs, whole blood was collected in EDTA tubes and DNA extracted from a total of 180 µL whole blood. A DNA-based qPCR assay was run and parasitemia quantified (defined as WB-qPCR). Parasite densities as low as 0.05 Pf/µL are detected with the WB-qPCR protocol. During both CHMIs, fresh blood from asymptomatic subjects collected 9 to 18 days post-CHMI was tested with RDTs (Table 1). CHMI-1 and CHMI-2 used two different types of RDTs, which required 20 µL and 5 µL of whole blood, respectively. RDTs collected during CHMI-1 were stored for an average of 605 days (categorized as > 18 months), while RDTs collected during CHMI-2 were stored for an average of 18 days (< 1 month) before processing following the ENAR protocol. For the entire storage period, RDTs were kept at RT in a closed box and protected from light. NAs were extracted from the RDTs using the ENAR protocol and parasites were detected and quantified by RT-qPCR using the PlasQ assay.

Impact of long-term storage on detection rate of parasite NA extracted by ENAR. First, we analyzed the impact of RDT storage time on parasite detection rates. Long-term storage (> 18 months) negatively affects the *Pf* detection rate in samples with a parasite density between 1 and 10 Pf/µL but has no negative impact on samples with initial parasite density greater than 10 Pf/µL (Fig. 2A). Long-term storage negatively affects the detection rate based on the Psp18S target (33% vs. 100%, Fisher's exact test $p = 0.06$) more than the PfvarATS target (66% vs. 100%, Fisher's exact test $p = 0.46$). Interestingly, the parasite densities estimated from RDTs with shorter storage time (< 1 month) are closer to the reference parasite densities assessed by WB-qPCR using 180 µL freshly prepared blood than the estimates from RDTs with longer storage time (> 18 months) (Fig. 2B). This is an additional indicator that NAs conserved on RDTs might undergo degradation over time.

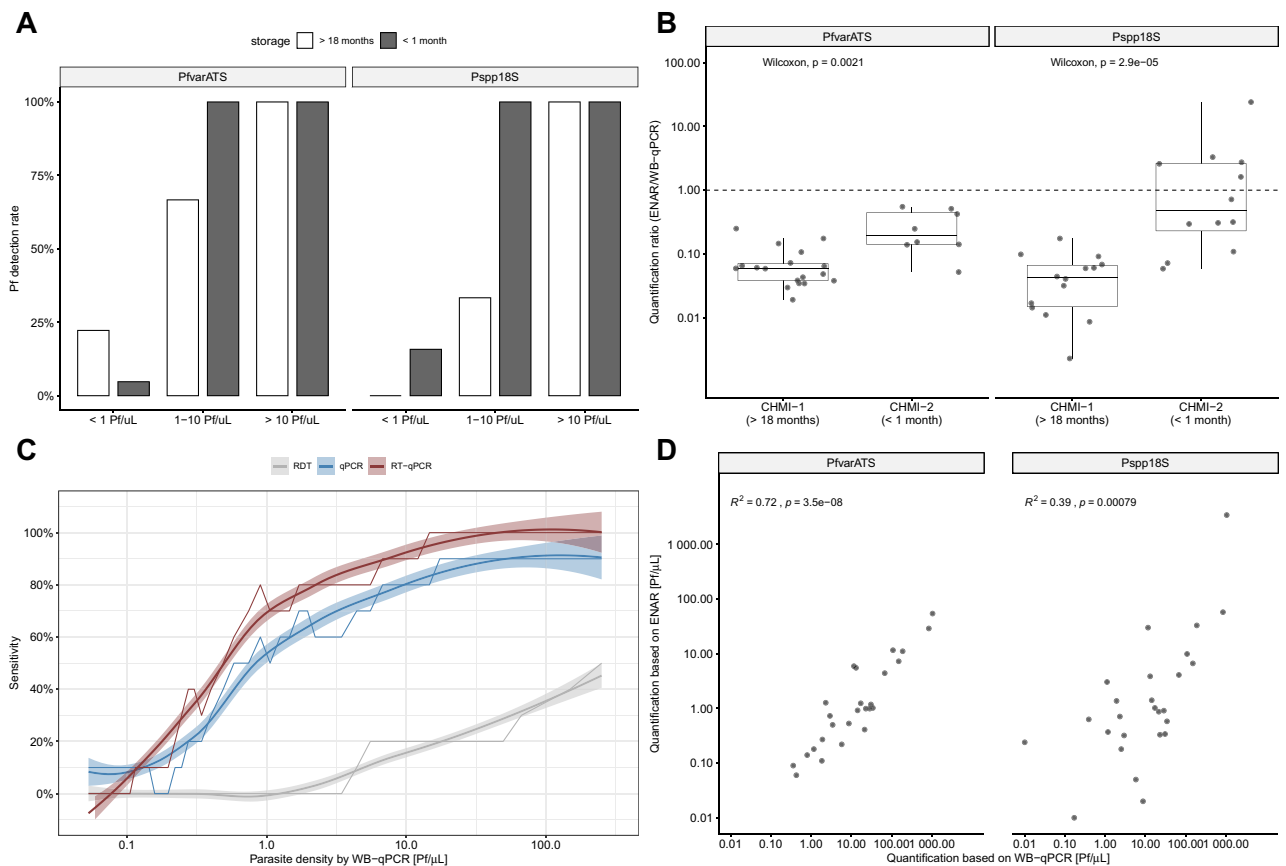


Figure 2. Evaluation of ENAR protocol using samples collected during CHMI studies. **(A)** *Pf* detection rates grouped by parasite density and storage time. **(B)** Quantification ratio between densities derived from ENAR and densities derived from whole blood qPCR (WB-qPCR). **(C)** Diagnostic sensitivity of rapid diagnostic test (RDT), ENAR followed by qPCR detection (qPCR) and ENAR followed by RT-qPCR detection (RT-qPCR) in relation to parasite density. Rolling means of 10 observations, using WB-qPCR as a gold standard, are shown with 95% CIs (shaded areas). **(D)** Correlation of parasite densities obtained from DNA extracted from fresh whole blood and NAs extracted by ENAR.

Clinical sensitivity and parasite quantification based on ENAR approach. If the data of both CHMIs are combined, the overall detection rate was 54% for the ENAR-based RT-qPCR when compared to WB-qPCR, which was significantly higher than detection by microscopy (9%) or PfHRP2 antigen capture by RDT (12%) using the same samples.

In order to understand the contribution of RNA on the detection rates in this clinical sample set, we compared RT-qPCR with qPCR. Detection rates of RT-qPCR in relation to parasite density reveals an improved diagnostic performance over the whole range of *Pf* densities compared to qPCR (Fig. 2C). RT-qPCR is significantly more sensitive than qPCR for the Psp18S assay (27% vs 47%, McNemar test $p = 0.0026$), but not for the PfvarATS assay (47% vs. 47%, McNemar test $p = 1.0$). Interestingly, among the long-term stored RDTs collected in 2016, the detection rate of the Psp18S assay was also significantly higher for RT-qPCR compared to qPCR (52% vs 22%, McNemar test $p = 0.01$). Even after long-term storage a significant proportion of (fragmented) RNA can be still extracted and used for RT-qPCR amplification.

Parasite densities determined by WB-qPCR versus densities obtained with the ENAR-based RT-qPCR method showed significant positive correlation supporting the quantitative character of our approach (Fig. 2D). The correlation was stronger with the PfvarATS assay ($r^2 = 0.72$) than with the Psp18S assay ($r^2 = 0.39$).

Implementation of ENAR protocol within malaria indicator survey. We implemented the ENAR approach within a malaria indicator survey in which we aimed to screen for SNPs in the *pfk13* propeller region to study the prevalence and type of mutations potentially associated with artemisinin resistance. We tested ENAR using samples and data derived from the 2018 BIMEP MIS which included more than 13,000 individuals (Fig. 3A). Instead of disposing the RDTs after use, the tests were labeled with a barcode to connect each RDT with other survey data collected in questionnaires (Fig. 3B). For each of these barcode-labeled RDTs, an extra informed consent for molecular analysis was obtained from the participants or their legal guardians. For the sorting and selection of distinct RDTs for analysis, we developed the *RDTselect* app (<https://github.com/Sparclex/barcode-value-finder>), a browser-based mobile phone application which identifies barcode-labeled RDTs based on an input list containing all barcodes of a certain selection (Fig. 3C).

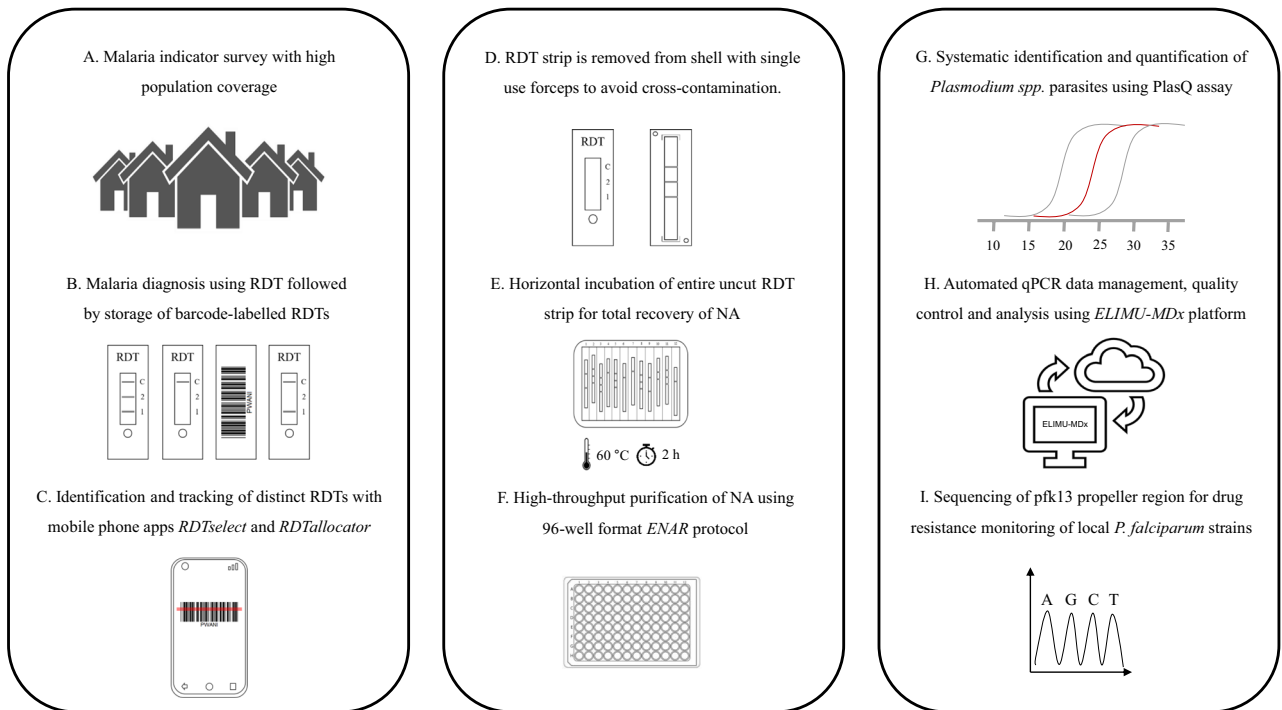


Figure 3. Adaptation of ENAR protocol for analyzing large numbers of barcoded RDTs. **(A)** Malaria indicator survey conducted including a detailed questionnaire. **(B)** Malaria prevalence is determined by RDT followed by storage of barcode-labelled RDTs. **(C)** Sorting and tracking of RDTs using smartphone apps. **(D–F)** High throughput protocol for extraction of NAs from RDTs using the ENAR approach (Image courtesy of LJNovaScotia/Pixabay). **(G)** Detection and quantification of *Pf* and non-*Pf* malaria parasite. **(H)** Automated analysis of qPCR data using ELIMU-MDx. **(I)** Genotyping of *pfk13* propeller region for drug resistance monitoring.

To enable tracking of an individual RDT throughout the ENAR extraction process the *RDTallocator* app (<https://github.com/Sparclex/position-allocator>) was programmed. The barcodes are scanned with a mobile phone camera and the *RDTallocator* app allocates the associated RDT strip to the next available position in a 96-well plate (Fig. 3C). After opening the RDT shell the entire uncut RDT strip is removed with sterile, single-use forceps (Fig. 3D), incubated with lysis buffer in a 12-well long-format plate (Fig. 3E), and NAs are extracted in a high-throughput 96-well format of the ENAR protocol (Fig. 3F). All extracted samples undergo initial screening for presence of *Plasmodium* spp. parasites and quality control using the PlasQ RT-qPCR assay (Fig. 3G). All RT-qPCR data generated were managed and analyzed by a custom-designed laboratory management and information system. ELIMU-MDx is designed for automated quality control, management and analysis of qPCR data³² (Fig. 3H). Samples positive for *Pf* were subjected to amplification and sequencing of *pfk13* for identification of SNPs associated with drug resistance (Fig. 3I).

A total of 2,690 out of 13,270 (20.3%) RDTs were extracted by ENAR and analyzed for *Plasmodium* spp. parasites by RT-qPCR. The demographic information of the entire MIS population and the selected volunteers for the molecular analysis are given in Table 2. Only volunteers with body temperature < 37.5 °C were included. Volunteers with a positive RDT and pregnant women are intentionally over-represented in our sample set.

Malaria infections among asymptomatic MIS participants are characterized by *Pf* infections with mainly low parasite densities.

Applying the approach described in Fig. 3, 30.8% (828/2,690) of the analyzed RDTs tested positive for *Plasmodium* spp. NAs (Table 3). A qPCR-based species identification revealed that 92.9% were *Pf*, 4.0% *P. malariae* and 1.0% *P. ovale* spp. No *P. vivax* or *P. knowlesi* NAs were found. In this asymptomatic population, *Pf* infections had on average parasite density of 29.2 Pf/μL, with densities being the highest among children below the age of five years (Fig. 4a). The rather low parasitemia levels of asymptomatic individuals in combination with the small amount of blood available have implications for *pfk13* genotyping. Samples with parasitemia levels below 50 Pf/μL are rarely amplified successfully for *pfk13* sequencing (Fig. 4b). In order to increase the efficiency of *pfk13* genotyping process from RDTs, pre-selection based on RDT result is advised. For example, 84.5% of RDTs positive for both, PfHRP2 and pLDH carried parasite densities high enough to result in successful amplification of the *pfk13* propeller region.

Low prevalence of SNPs in the *pfk13* propeller region among *Pf* parasite isolates on Bioko.

Sequence analysis of the *pfk13* propeller region revealed a low prevalence of SNPs (Table 4). 97.6% (283/290) of Bioko's *Pf* isolates carried the wildtype allele. Two isolates had the A578S and one the V589I non-synonymous SNP, which have been described in sub-Saharan Africa before^{12,33} and are not associated with arte-

	All individuals (n = 13,270)	Selected individuals (n = 2,690)
Gender		
Female	7,155 (53.9%)	1569 (58.3%)
Male	6,115 (46.1%)	1,121 (41.7%)
Age (years)		
Mean (SD)	21.2 (± 17.7)	27.1 (± 21.0)
Age group		
< 5	2,308 (17.4%)	276 (10.3%)
5–14	3,719 (28.0%)	660 (24.5%)
15–45	5,758 (43.4%)	1,208 (44.9%)
> 45	1,485 (11.2%)	546 (20.3%)
District		
Baney	1519 (11.4%)	400 (14.9%)
Luba	1,093 (8.2%)	268 (10.0%)
Malabo	10,121 (76.3%)	1814 (67.4%)
Riaba	537 (4.0%)	208 (7.7%)
RDT result		
Negative	11,842 (89.2%)	1623 (60.3%)
pLDH	43 (0.3%)	39 (1.4%)
PfHRP2	871 (6.6%)	653 (24.3%)
pLDH + PfHRP2	462 (3.5%)	367 (13.6%)
Pregnancy status		
Currently pregnant	237 (1.8%)	225 (8.4%)
Gave birth to live baby	918 (6.9%)	128 (4.8%)
Hemoglobin (g/dL)		
Mean (SD)	12.4 (± 1.79)	12.1 (± 1.88)
Anemia status		
No	8,874 (65.7%)	1593 (57.6%)
Mild	2,711 (20.1%)	634 (22.9%)
Moderate	1777 (13.2%)	502 (18.1%)
Severe	110 (0.8%)	34 (1.2%)

Table 2. Demographic information of MIS participants.

	Number of samples (%)
RDTs analysed by PlasQ	2,690
Positive for PlasQ RT-qPCR	828 (30.8%)
Plasmodium spp. Identification	
Positive for <i>P. falciparum</i>	769 (92.9%)
<i>P. falciparum</i> with > 100 Pf/uL	227 (29.5%)
Positive for <i>P. malariae</i>	33 (4.0%)
Positive for <i>P. ovale</i> spp.	8 (1.0%)
Positive for <i>P. knowlesi</i>	0 (0.0%)
Positive for <i>P. vivax</i>	0 (0.0%)
Pf/Pm co-infections	16 (1.9%)

Table 3. ENAR-based identification of malaria parasites using PlasQ RT-qPCR assay.

misinin resistance³⁴. The P553L SNP was first described in Cambodia¹³. This SNP has previously been found at low prevalence in East Africa, in Kenya and Malawi³⁵ as well as recently found in an isolate from a Chinese national returned from Angola³⁶. To our knowledge, the V517I SNP has never been described before. Compared to the other three known SNPs, the V517I SNP had the lowest PROVEAN³⁷ score, indicating no or neutral effects on the biological function of the kelch 13 protein. Two synonymous SNPs, namely, V510V and C469C, were also found.

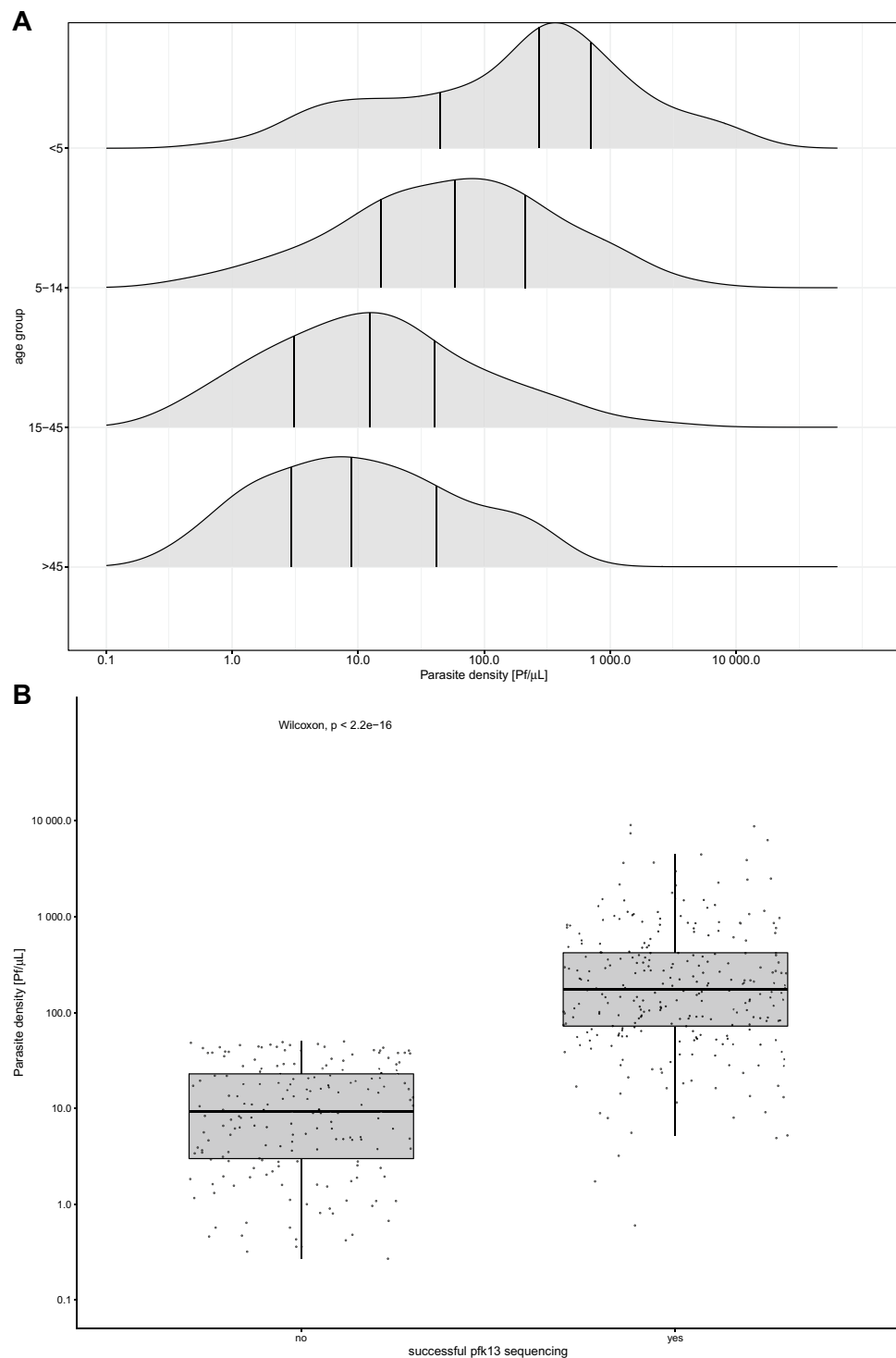


Figure 4. Parasite densities among asymptomatic individuals and implication for sequence analysis. **(A)** Age group dependent parasite densities. **(B)** Association between parasite density and successful amplification of *pfk13* for sequence analysis.

Discussion

This report presents the development of an high-throughput approach for large-scale molecular surveillance of malaria parasites based on extraction of NAs from RDTs. During the development of ENAR, special attention was given to the evaluation of its reproducibility and the impact of long-term storage on the detectability of the NAs. Using samples from CHMI studies as a standardized platform allowed us to conclude that NAs can be reliably recovered and amplified from RDTs, even after long-term storage at RT. The small amount of blood in combination with low parasite density is a challenge when it comes to detecting *Pf* in asymptomatic patients.

		PROVEAN score
Kelch13 propeller genotyping		
<i>P. falciparum</i> strains sequenced	290	
PfNF54 allele	283 (97.6%)	
Non-synonymous SNPs		
A578S (G1732T)	2 (0.69%)	-1.962
V589I (G1765A)	1 (0.35%)	-0.663
V517I (G1549A)	1 (0.35%)	-0.562
P553L (C1659T)	1 (0.35%)	-1.721
Synonymous SNPs		
V510V (G1530A)	1 (0.35%)	
C469C (C1407T)	1 (0.35%)	

Table 4. *Pf*k13 propeller polymorphisms observed in MIS population on Bioko Island.

Therefore, we aimed to maximize the amount of NA recovered from RDTs by expanding the pool of possible target molecules to RNA by using RT-qPCR. Even after a storage period of over 18 months at RT, the detection rate of the RT-qPCR assay was still significantly higher compared to qPCR only, indicating long-term preservation of DNA and RNA.

We aimed to transform the ENAR approach into a flexible tool for larger scale surveillance studies by increasing extraction and analysis throughput. The ENAR approach was successfully integrated into the 2018 BIMEP MIS on Bioko Island. More than 13,000 individuals gave extra consent for storage and molecular analysis of their RDT. This high acceptance rate was also described by others²¹ and can be attributed to the convenience of blood collection by finger prick and the small blood volume, usually 5 to 10 μ L, needed for RDTs. With a total of 2,750 RDTs, we analyzed blood from more than 20% of the MIS participants. This was made possible by the development of custom-made software solutions for sorting and identification of RDTs and by a significant reduction in processing time by using the entire RDT strip instead of cutting it into pieces.

Robust (quantitative) data, as generated by ENAR, in combination with a large-scale MIS adds substantial value to our understanding of malaria endemicity on Bioko Island without conducting additional expensive and time consuming epidemiological studies. In addition this process allows for researches to detect various species of malaria parasites. For instance, we found *P. malariae* and *P. ovale* spp., but did not find *P. vivax*, as in previous studies when surveys carried out in 1996 and 1998 found two³⁸ and one³⁹ case of *P. vivax* infection on Bioko Island.

In addition, we screened for SNPs in the propeller region of the *pfk13* gene among asymptomatic individuals to obtain data of possible artemisinin-resistant *Pf* strains circulating on the island. We found that 1.7% (5/290) of the analyzed *Pf* isolates had non-synonymous SNPs in the *pfk13* propeller region, which is comparable to the prevalence found in other African countries³³. Among the five isolates with non-synonymous SNPs, two isolates had the A578S, one the V589I, one the P553L and one the V517I SNP. The A578S and V589I allele had been reported in the region already^{40,41}, and we found one new previously unreported non-synonymous SNP, V517I. Interestingly, the P553L SNP is the only mutation we found which was previously associated with delayed parasite clearance¹². Although the prevalence of *pfk13* SNPs seems to be low in the moment, the spread of *Pf* parasites with *pfk13* SNPs needs to be closely monitored. A molecular surveillance approach as presented may offer a unique opportunity to support policy makers regarding choice and change of drugs for malaria treatment⁴².

Based on the presented results, we propose that ENAR provides a powerful tool for molecular malaria surveillance and could be reliably used for retrospective quantitative and in-depth molecular studies of malaria.

Material and methods

***Pf* reference samples.** *Pf* reference samples were used to test the performance of the ENAR procedure. Experiments with *Pf* reference samples were conducted using Carestart HRP2/pLDH Combo RDTs (Access Bio, Inc., Somerset, NJ, USA). Serial dilutions of the WHO International Standard for *Pf* DNA Nucleic Acid Amplification Techniques (NIBSC code: 04/176, herein referred to as PfIS)⁴³ were used to quantify *Pf* parasitemia by (RT)-qPCR. Whole blood was spiked with different parasite densities, ranging from 10,000 to 0.1 Pf/ μ L and 5 μ L of this suspension applied onto RDT.

Additionally, ten-fold serial dilutions, ranging from 10,000 to 0.1 Pf/ μ L, of freshly cultured *Pf* strains PfNF54, PfDD2 and PfHB3 were prepared and 5 μ L were applied onto RDTs. 5 μ L of stage V gametocytes were obtained from in vitro parasite culture as described previously⁴⁴. RDTs probed with these stage V gametocytes were extracted using the ENAR protocol after a three-week storage period at RT.

School-based survey in Mkuranga district. Carestart HRP2/pLDH Combo RDTs were used to determine the parasite rate among asymptomatic children from three primary schools in the Mkuranga district of Coastal Tanzania. Extraction protocol A, which is based on the Quick-DNA Miniprep Kit (Zymo Research Corporation, Irvine CA, USA), was used to extract DNA from a total of 190 RDTs collected during this school-based survey. *Pf* was detected by amplifying the acidic terminal sequence of the var genes (PfvarATS)⁴⁵.

Sample collection, analysis and storage during CHMI studies. RDTs were collected during two CHMI studies conducted to evaluate Sanaria's PfSPZ Vaccine in Bagamoyo, Tanzania (Clinical Trials.gov registration numbers NCT02613520 and NCT03420053, respectively). The first CHMI was conducted in 2016 (referred to CHMI-1) and the second CHMI was conducted in 2018 (referred to CHMI-2). Fresh venous whole blood collected in EDTA tubes was analyzed by RDTs within 45 min after blood collection. During CHMI-1, 20 μ L was applied to BinaxNOW Malaria RDT (Alere, Cologne, Germany) and during CHMI-2, 5 μ L was applied to Carestart HRP2/pLDH Combo RDT. The RDTs were read according to the manufacturers guidelines and then stored in a box at RT until extraction of NA.

The same samples were used to monitor parasitemia during CHMI by thick blood smear microscopy and qPCR as described elsewhere^{46,47}. All samples were processed and analyzed at the laboratory of the Bagamoyo branch of the Ifakara Health Institute in Tanzania.

Malaria indicator survey on Bioko Island, Equatorial Guinea. The 2018 BIMEP Malaria Indicator Survey (MIS) was carried out between August and October 2018 on a representative sample of 13,505 individuals from 4,774 households selected from all communities across Bioko Island. All consenting permanent residents and short-term visitors were tested for malaria using the CareStart Malaria HRP2/pLDH Combo RDT. Used RDTs were stored at RT in plastic bags containing desiccants and transported to the Swiss Tropical and Public Health Institute for further molecular analysis.

Nucleic acid extraction methods from RDTs. The RDT cassettes were opened, the entire RDT strip removed and cut into four small pieces in order to fit into a 1.5 mL micro-centrifuge tube. A set of cleaned forceps and scissors were used with special attention given to prevent cross-contamination between samples. After processing a sample, the scissors and forceps were cleaned in 10% sodium hypochlorite, wiped with ethanol-sprayed tissues and dried before processing the next sample. The four nucleic extraction protocols tested, named A through D, were all based on silica columns.

Protocol A: ZR Quick-DNA Miniprep Kit. The protocol is based on the Quick-DNA Miniprep Kit (Zymo Research Corporation, Irvine CA, USA). Briefly, 1 mL of Genomic Lysis Buffer was added to the pre-cut RDT strip in a 1.5 mL micro-centrifuge tube and incubated at 95 °C for 20 min. The mixture was then transferred onto the extraction column and the manufacturers guide was followed for extraction. DNA was eluted in 50 μ L of DNA Elution Buffer.

Protocol B: ZR Quick-DNA Miniprep Plus Kit. The protocol is based on the Quick-DNA Miniprep Plus Kit (Zymo Research Corporation, Irvine CA, USA). We added 600 μ L of Solid Tissue Buffer (Blue) and 40 μ L of Proteinase K to the pre-cut RDT strip in a 1.5 mL micro-centrifuge tube and incubated at 55 °C for 60 min. The supernatant was transferred to a clean 1.5 mL micro-centrifuge tube and 640 μ L of Genomic Lysis Buffer was added and thoroughly mixed. The mixture was transferred onto the extraction column and extracted per manufacturers guidelines. DNA was eluted in 50 μ L of DNA Elution Buffer.

Protocol C: NukEx Pure RNA/DNA Kit. The protocol is based on NukEx Pure RNA/DNA Kit (Gerbion GmbH, Kornwestheim, Germany), which co-extracts DNA and RNA. We created a working solution of 500 μ L of Binding Buffer, 4 μ L of Poly A and 50 μ L of Proteinase K. The working solution was added to the pre-cut RDT strip in a 1.5 mL micro-centrifuge tube following incubation at 60 °C for 10 min. The supernatant was transferred onto the NukEx Spin Column and extraction was carried out per manufacturer's guidelines. Total NAs were eluted in 50 μ L of Elution Buffer.

Protocol D: Zainabadi et al. extraction method for DBS. The protocol is based on a recently published extraction protocol for total NAs from dried blood spots⁴⁸. Identical buffer compositions were used, and the protocol was adapted to extraction of NAs from RDT strips. We incubated the pre-cut RDT strip in 900 μ L lysis buffer at 60 °C for 2 h. The supernatant was transferred onto Omega HiBind RNA Mini Columns (Omega Bio-Tek, Norcross, USA) and NAs extracted as described. NAs were eluted in 50 μ L of Elution Buffer (Quick-DNA Miniprep Kit, Zymo Research Corporation, Irvine CA, USA).

High-throughput extraction protocol of NAs from RDTs (ENAR protocol). We adapted protocol D to extract NAs from used RDTs in a high-throughput manner. The main modification included a horizontal incubation of the entire uncut RDT strip by using sterile, RNase-/DNase-free 12-channel reservoirs (Axygen, Corning Inc, USA) and switching to a 96-well format for extraction. By removing the cutting step, the hands-on time during the extraction process is significantly reduced, as well the risk of cross-contamination by carryover during the cutting process is minimized. Up to eight 12-channel reservoirs, with a total of 96 samples, were processed in one batch. Lysis was conducted by adding 900 μ L lysis buffer to each RDT strip placed in the 12-channel reservoir followed by incubation at 60 °C for 2 h with gentle shaking. All supernatants were then transferred to Omega E-Z 96 wells DNA plates (Omega Bio-Tek, Norcross, USA), washed with Wash Buffer 1 and 2 and lastly eluted into a 96 well plate (DNA LoBind Plates, Eppendorf) with 50 μ L pre-warmed (60 °C) Elution Buffer (Zymo Research Corporation, Irvine CA, USA). With these adaptations to the protocol, NA from 96 RDTs can be extracted in about three hours, with minimal hands-on time needed. One positive control (RDT spiked with 5 μ L blood containing 200 Pf/ μ L) and one negative control (Lysis Buffer only) were included with each extraction

plate to control for plate-to-plate consistency and cross-contamination. A standard operating procedure (SOP) for ENAR can be found in Supplementary Protocol S1.

Detection and quantification of *Plasmodium* spp. parasites. We used the PlasQ assay, a multiplex qPCR assay for *Plasmodium* spp. and *Pf* detection and quantification to analyze the NAs extracted from RDTs⁴⁷. The PlasQ assay targets the Pan-*Plasmodium* 18S DNA and RNA (Psp18S)^{49,50} and the *Pf*-specific acidic terminal sequence of the var genes (PvarATS)⁴⁵. The human *rnasep* gene (HsRNaseP)⁴⁹ served as an internal control to assess the quality of NA extraction and qPCR amplification. To run the PlasQ as a RT-qPCR assay, targeting both DNA and RNA templates, we added 1 × Luna WarmStart RT Enzyme Mix (New England Biolabs, Ipswich, USA) and started the RT-qPCR program with a reverse transcription step at 55 °C for 15 min. All qPCR and RT-qPCR assays were run on a Bio-Rad CFX96 Real-Time PCR System (Bio-Rad Laboratories, California, USA). Samples were analyzed in duplicate with positive (PfnF54 DNA), negative (malaria negative individual) and non-template (molecular biology grade H₂O) controls added to each qPCR run.

Multiplex pre-amplification of *Plasmodium* spp. DNA. The *Plasmodium* spp. 18S rDNA and *pfk13* genes of all PlasQ-positive samples were amplified in a multiplex reaction by conventional PCR. We amplified 3 µL of extracted NAs in a total volume of 20 µL using 1 × HOT FIREPol MultiPlex Mix (Solis Biodyne, Tartu, Estonia). Using 0.25 µM of the published primers, AGT GGA AGA CAT CAT GTA ACC AG and CCA AGC TGC CAT TCA TTT GT, 986 bp of the *pfk13* propeller region were amplified²⁶. Simultaneously, 1,407–1,469 bp of the pan-*Plasmodium* 18S rDNA were amplified using 0.5 µM of GRA ACT SSS AAC GGC TCA TT⁵¹ and AGC AGG TTA AGA TCT CGT TCG⁴⁹. The conditions of the multiplex PCR were the following: 95 °C for 12 min; 25 cycles of 95 °C for 20 s, 57 °C for 40 s and 72 °C for 1 min 45 s; and 72 °C for 10 min.

Detection of gametocytes and *Plasmodium* spp. species identification. *Gametocyte-specific RT-qPCR assay.* A previously published RT-qPCR assay for identification of *Pf* gametocytes based the PF3D7_0630000 transcript was used³⁰. Briefly, 2 µL of extracted NAs were added to 8 µL reaction mix consisting of 0.6 µM of primers, 0.3 µM probe and Luna Universal Probe One-Step RT-qPCR Kit (New England Biolabs, Ipswich, USA). The qPCR program included a reverse transcription step for 15 min at 53 °C, followed by polymerase activation for 1 min at 95 °C, and 45 cycles with 15 s at 95 °C and 45 s at 53 °C.

Plasmodium spp. species identification. Non-*falciparum* *Plasmodium* species identification based on the 18S rDNA gene was performed. 2 µL of the product from the *Plasmodium* spp. multiplex pre-amplification were added to the master mix containing 1 × Luna Universal Probe qPCR Master Mix, 0.8 µM forward (GTT AAG GGA GTG AAG ACG ATC AGA) and 0.8 µM reverse primers (AAC CCA AAG ACT TTG ATT TCT CAT AA) to amplify a 157- to 165-bp segment of the *Plasmodium* spp. 18S rDNA gene⁵². Species-specific probes were selected to differentiate between the species. *P. malariae* was detected using a Yakima Yellow-labelled MGB probe (CTA TCT AAA AGA AAC ACT CAT)⁵³, *P. ovale* spp., including *P. ovale curtisi* and *P. ovale wallikeri*, using a novel designed Texas Red-labelled and LNA-modified probe (GGA [LNA-A]AT [LNA-T]TC TTA GAT TGC TTC CT[LNA-T] CAG), *P. vivax* a Cy5-labelled probe (GAA TTT TCT CTT CGG AGT TTA)⁵⁴ and *P. knowlesi* a Cy5-labelled probe (CTC TCC GGA GAT TAG AAC TCT TAG ATT GCT)⁵⁵. The conditions for the qPCR were: 95 °C for 3 min and 45 cycles of 95 °C for 15 s and 57 °C for 45 s.

Genotyping of *pfk13* propeller region. In a second PCR reaction with a 15 µL total volume, 1.5 µL of the product from the *Plasmodium* spp. multiplex pre-amplification was amplified using 1 × HOT FIREPol MultiPlex Mix (Solis Biodyne, Tartu, Estonia) and 0.33 µM forward (TGA AGC CTT GTT GAA AGA AGC A) and reverse (TCG CCA TTT TCT CCT CCT GT) primers. Except for an annealing temperature of 58 °C, the PCR conditions were similar to the first reaction. The 798 bp product of the second PCR was evaluated using agarose gel electrophoresis and samples which failed amplification were repeated. Amplicons were sequenced by Microsynth (Microsynth AG, Balgach, Switzerland).

Data analysis and statistics. All (RT)-qPCR assays were run in duplicates and initial data analysis of the (RT)-qPCR data was conducted using CFX Maestro Software (Bio-Rad Laboratories, California, USA). In the case where one replicate interpreted as positive and the other negative, then the assay was repeated and the result was considered positive if two positive replicates were obtained out of the total four replicates. All (RT)-qPCR data generated were managed and analyzed by a custom-designed laboratory management and information system named ELIMU-MDx³². The ELIMU-MDx platform supports automated quality control, management and analysis of qPCR data. Oligo design and sequence analysis was performed using Geneious Prime 2019.1.1 (<https://www.geneious.com>). Statistical analysis and visualization of data was conducted using R version 3.5.1 based on packages *dplyr*, *ggpubr*, *ggplot2*, *gridextra*, *reshape2* and *scales*.

Ethics approval and consent to participate. For the school-based survey in Mkuranga district, sample collection was approved by the Senate Research and Publication Committee (SRPC) of the Muhimbili University of Health and Allied Sciences (Ref. No. 2012-04-04180) and the respective authorities at Mkuranga district. Both clinical trials were performed in accordance with Good Clinical Practices (GCP). CHMI-1 (Clinical Trials.gov: NCT02613520) protocol was approved by IRBs of the Ifakara Health Institute (IHI) (Ref. No. IHI/IRB/ No: 32-2015), the National Institute for Medical Research Tanzania (NIMR) (NIMR/HQ/R.8a/Vol.IX/2049), and the Ethikkommission Nordwest- und Zentralschweiz (EKNZ) Switzerland (reference number 15/104). The pro-

tol was also approved by the Tanzania Food and Drug Authority (TFDA) (Auth. No. TZ15CT013). CHMI-2 (ClinicalTrials.gov: NCT03420053) protocol was approved by IHI's IRB (Ref. No. IHI/IRB/ No: 32-2015), NIMR (NIMR/HQ/R.8a/Vol.IX/2049), EKNZ (reference number 15/104) and TFDA (Auth. No. TZ15CT013). The 2018 malaria indicator survey was approved by the Ministry of Health and Social Welfare of Equatorial Guinea and the Ethics Committee of the London School of Hygiene & Tropical Medicine (Ref. No. LSHTM: 5556). Written informed consent was obtained from all adults and from parents or guardians of children who agreed to participate. Only samples for which an additional consent for molecular analysis was obtained were included in this study. We confirm that all experiments were performed in accordance with relevant guidelines and regulations.

Received: 5 February 2020; Accepted: 10 July 2020

Published online: 23 July 2020

References

1. WHO. World malaria report 2018. *World Health Organ.* 210 (2019).
2. WHO | Malaria surveillance, monitoring & evaluation: a reference manual. WHO <https://www.who.int/malaria/publications/atoz/9789241565578/en/>.
3. Smith, D. L., Guerra, C. A., Snow, R. W. & Hay, S. I. Standardizing estimates of the Plasmodium falciparum parasite rate. *Malar. J.* **6**, 131 (2007).
4. Guerra, C. A. *et al.* Assembling a global database of malaria parasite prevalence for the Malaria Atlas Project. *Malar. J.* **6**, 17 (2007).
5. Hofmann, N. E. *et al.* Assessment of ultra-sensitive malaria diagnosis versus standard molecular diagnostics for malaria elimination: an in-depth molecular community cross-sectional study. *Lancet Infect. Dis.* **18**, 1108–1116 (2018).
6. Gendrot, M., Fawaz, R., Dormoi, J., Madamet, M. & Pradines, B. Genetic diversity and deletion of Plasmodium falciparum histidine-rich protein 2 and 3: a threat to diagnosis of P. falciparum malaria. *Clin. Microbiol. Infect. Off. Publ. Eur. Soc. Clin. Microbiol. Infect. Dis.* **25**, 580–585 (2019).
7. Okell, L. C., Ghani, A. C., Lyons, E. & Drakeley, C. J. Submicroscopic infection in Plasmodium falciparum-endemic populations: a systematic review and meta-analysis. *J. Infect. Dis.* **200**, 1509–1517 (2009).
8. Diakité, S. A. S. *et al.* A comprehensive analysis of drug resistance molecular markers and Plasmodium falciparum genetic diversity in two malaria endemic sites in Mali. *Malar. J.* **18**, 361 (2019).
9. Apinjoh, T. O., Ouattara, A., Titanji, V. P. K., Djimde, A. & Amambua-Ngwa, A. Genetic diversity and drug resistance surveillance of Plasmodium falciparum for malaria elimination: is there an ideal tool for resource-limited sub-Saharan Africa?. *Malar. J.* **18**, 217 (2019).
10. Dondorp, A. M. *et al.* Artemisinin resistance in plasmodium falciparum Malaria. *N. Engl. J. Med.* **361**, 455–467 (2009).
11. Noedl, H. *et al.* Evidence of artemisinin-resistant malaria in western Cambodia. *N. Engl. J. Med.* **359**, 2619–2620 (2008).
12. Ménard, D. *et al.* A worldwide map of plasmodium falciparum K13-propeller polymorphisms. *N. Engl. J. Med.* **374**, 2453–2464 (2016).
13. Ariey, F. *et al.* A molecular marker of artemisinin-resistant Plasmodium falciparum malaria. *Nature* **505**, 50–55 (2014).
14. Veron, V. & Carne, B. Recovery and use of plasmodium DNA from malaria rapid diagnostic tests. *Am. J. Trop. Med. Hyg.* **74**, 941–943 (2006).
15. Ishengoma, D. S. *et al.* Using rapid diagnostic tests as source of malaria parasite DNA for molecular analyses in the era of declining malaria prevalence. *Malar. J.* **10**, 6 (2011).
16. Cnops, L., Boderie, M., Gillet, P., Van Esbroeck, M. & Jacobs, J. Rapid diagnostic tests as a source of DNA for Plasmodium species-specific real-time PCR. *Malar. J.* **10**, 67 (2011).
17. Morris, U. *et al.* Rapid diagnostic tests for molecular surveillance of Plasmodium falciparum malaria -assessment of DNA extraction methods and field applicability. *Malar. J.* **12**, 106 (2013).
18. Papa Mze, N. *et al.* RDTs as a source of DNA to study Plasmodium falciparum drug resistance in isolates from Senegal and the Comoros Islands. *Malar. J.* **14**, 373 (2015).
19. Nabet, C. *et al.* Analyzing deoxyribose nucleic acid from Malaria rapid diagnostic tests to study plasmodium falciparum genetic diversity in Mali. *Am. J. Trop. Med. Hyg.* **94**, 1259–1265 (2016).
20. Boyce, R. M. *et al.* Reuse of malaria rapid diagnostic tests for amplicon deep sequencing to estimate Plasmodium falciparum transmission intensity in western Uganda. *Sci. Rep.* **8**, 10159 (2018).
21. Robinson, A. *et al.* Molecular quantification of Plasmodium parasite density from the blood retained in used RDTs. *Sci. Rep.* **9**, 5107 (2019).
22. Nag, S. *et al.* Proof of concept: used malaria rapid diagnostic tests applied for parallel sequencing for surveillance of molecular markers of anti-malarial resistance in Bissau, Guinea-Bissau during 2014–2017. *Malar. J.* **18**, 252 (2019).
23. Nguyen, T. T. *et al.* DNA recovery from archived RDTs for genetic characterization of Plasmodium falciparum in a routine setting in Lambaréné Gabon. *Malar. J.* **18**, 336 (2019).
24. Ndiaye, M. *et al.* Country-wide surveillance of molecular markers of antimalarial drug resistance in Senegal by use of positive malaria rapid diagnostic tests. *Am. J. Trop. Med. Hyg.* **97**, 1593–1596 (2017).
25. Cook, J. *et al.* Trends in Parasite Prevalence Following 13 Years of Malaria Interventions on Bioko Island, Equatorial Guinea: 2004–2016. vol. 17 (2018).
26. Lu, F. *et al.* Emergence of Indigenous Artemisinin-Resistant Plasmodium falciparum in Africa. *N. Engl. J. Med.* **376**, 991–993 (2017).
27. Murphy, S. C. *et al.* Real-time quantitative reverse transcription PCR for monitoring of blood-stage Plasmodium falciparum infections in malaria human challenge trials. *Am. J. Trop. Med. Hyg.* **86**, 383–394 (2012).
28. Seilie, A. M. *et al.* Beyond blood smears: qualification of plasmodium 18S rRNA as a biomarker for controlled human malaria infections. *Am. J. Trop. Med. Hyg.* **100**, 1466–1476 (2019).
29. Otto, T. D. *et al.* New insights into the blood-stage transcriptome of Plasmodium falciparum using RNA-Seq. *Mol. Microbiol.* **76**, 12–24 (2010).
30. Hanron, A. E. *et al.* Multiplex, DNase-free one-step reverse transcription PCR for Plasmodium 18S rRNA and spliced gametocyte-specific mRNAs. *Malar. J.* **16**, 208 (2017).
31. Stanicic, D. I., McCarthy, J. S. & Good, M. F. Controlled human malaria infection: applications, advances, and challenges. *Infect. Immun.* **86** (2018).
32. Krähenbühl, S. *et al.* ELIMU-MDX: a web-based, open-source platform for storage, management and analysis of diagnostic qPCR data. *BioTechniques* (2019).

33. Kamau, E. *et al.* K13-Propeller polymorphisms in plasmodium falciparum parasites from Sub-Saharan Africa. *J. Infect. Dis.* **211**, 1352–1355 (2015).
34. Association of mutations in the Plasmodium falciparum Kelch13 gene (Pf3D7_1343700) with parasite clearance rates after artemisinin-based treatments—a WWARN individual patient data meta-analysis. *BMC Med.* **17** (2019).
35. Taylor, S. M. *et al.* Absence of putative artemisinin resistance mutations among plasmodium falciparum in Sub-Saharan Africa: a molecular epidemiologic study. *J. Infect. Dis.* **211**, 680–688 (2015).
36. Xu, C. *et al.* Surveillance of antimalarial resistance Pfcrt, Pfmdr1, and Pfkclch13 polymorphisms in African plasmodium falciparum imported to Shandong Province China. *Sci. Rep.* **8**, 1–9 (2018).
37. Choi, Y. & Chan, A. P. PROVEAN web server: a tool to predict the functional effect of amino acid substitutions and indels. *Bioinformatics* **31**, 2745–2747 (2015).
38. Rubio, J. M. *et al.* Semi-nested, multiplex polymerase chain reaction for detection of human malaria parasites and evidence of Plasmodium vivax infection in Equatorial Guinea. *Am. J. Trop. Med. Hyg.* **60**, 183–187 (1999).
39. Guerra-Neira, A. *et al.* Plasmodium diversity in non-malaria individuals from the Bioko Island in Equatorial Guinea (West Central-Africa). *Int J Health Geogr* **5**, 27 (2006).
40. Guerra, M. *et al.* Plasmodium falciparum genetic diversity in continental equatorial guinea before and after introduction of Artemisinin-based combination therapy. *Antimicrob. Agents Chemother.* **61** (2016).
41. Eboumbou Moukoko, C. E. *et al.* K-13 propeller gene polymorphisms isolated between 2014 and 2017 from Cameroonian Plasmodium falciparum malaria patients. *PLoS ONE* **14**, (2019).
42. Roper, C. *et al.* Molecular surveillance for artemisinin resistance in Africa. *Lancet Infect. Dis.* **14**, 668–670 (2014).
43. Padley, D. J. *et al.* Establishment of the 1st World Health Organization International Standard for Plasmodium falciparum DNA for nucleic acid amplification technique (NAT)-based assays. *Malar. J.* **7**, 139 (2008).
44. Brancucci, N. M. B. *et al.* Lysophosphatidylcholine regulates sexual stage differentiation in the human malaria parasite plasmodium falciparum. *Cell* **171**, 1532–1544.e15 (2017).
45. Hofmann, N. *et al.* Ultra-sensitive detection of plasmodium falciparum by amplification of multi-copy subtelomeric targets. *PLOS Med.* **12**, e1001788 (2015).
46. Jongo, S. A. *et al.* Safety and differential antibody and T-cell responses to the plasmodium falciparum sporozoite malaria vaccine, PfSPZ vaccine, by age in Tanzanian Adults, adolescents, children, and infants. *Am. J. Trop. Med. Hyg.* **100**, 1433–1444 (2019).
47. Schindler, T. *et al.* Molecular monitoring of the diversity of human pathogenic malaria species in blood donations on Bioko Island Equatorial Guinea. *Malar. J.* **18**, 9 (2019).
48. Zainabadi, K. *et al.* A novel method for extracting nucleic acids from dried blood spots for ultrasensitive detection of low-density Plasmodium falciparum and Plasmodium vivax infections. *Malar. J.* **16**, 377 (2017).
49. Kamau, E., Alemayehu, S., Feghali, K. C., Saunders, D. & Ockenhouse, C. F. Multiplex qPCR for detection and absolute quantification of malaria. *PLoS ONE* **8**, 1–9 (2013).
50. Kamau, E. *et al.* Measurement of parasitological data by quantitative real-time PCR from controlled human malaria infection trials at the Walter Reed Army Institute of Research. *Malar. J.* **13**, 288 (2014).
51. Chua, K. H. *et al.* Development of high resolution melting analysis for the diagnosis of human malaria. *Sci. Rep.* **5**, 15671 (2015).
52. Rougemont, M. *et al.* Detection of four Plasmodium species in blood from humans by 18S rRNA gene subunit-based and species-specific real-time PCR assays. *J. Clin. Microbiol.* **42**, 5636–5643 (2004).
53. Phuong, M., Lau, R., Ralevski, F. & Boggild, A. K. Sequence-based optimization of a quantitative real-time PCR assay for detection of Plasmodium ovale and Plasmodium malariae. *J. Clin. Microbiol.* **52**, 1068–1073 (2014).
54. Cnops, L., Jacobs, J. & Van Esbroeck, M. Validation of a four-primer real-time PCR as a diagnostic tool for single and mixed Plasmodium infections. *Clin. Microbiol. Infect. Off. Publ. Eur. Soc. Clin. Microbiol. Infect. Dis.* **17**, 1101–1107 (2011).
55. Divis, P. C. S., Shokoples, S. E., Singh, B. & Yanow, S. K. A TaqMan real-time PCR assay for the detection and quantitation of Plasmodium knowlesi. *Malar. J.* **9**, 344 (2010).

Acknowledgments

Etienne Guirou and Charlene Yoboue are recipients of Swiss Government Excellence Scholarships (Number 2016.1250 and 2017.0748, respectively) granted by the State Secretariat for Education, Research and Innovation. We would like to thank Christin Gumpp, Christian Scheurer and Sergio Wittlin from the Swiss TPH Malaria Drug Discovery Group for their help with cultivating PfNF54, PfDD2 and PfHB3 parasites. We are grateful to Eva Hitz and Till Voss from the Swiss TPH Malaria Gene Regulation Unit for kindly providing with *Pf* gametocytes culture. This study was funded by a public–private partnership, the Equatorial Guinea Malaria Vaccine Initiative (EGMVI), made up of the Government of Equatorial Guinea, Marathon EG Production Limited, Noble Energy, and Atlantic Methanol Production Company.

Author contributions

Conceptualization: EAG, TS, CD, Data curation and validation: EAG, TS, OTD, Formal analysis and visualization: EAG, TS, Funding acquisition: CD, MT, CM, BMN, Investigation: JS, NS, HM, Methodology: EAG, SH, GC, AD, LG, MM, CAY, Resources: SA, NS, JS, SLH, GM, CCF, WPP, GAG., Software: SK, Project administration and supervision: CD, TS, Writing—original draft: EAG, TS, CD, All authors reviewed the manuscript.

Competing interests

SL Hoffman is salaried and full-time employee of Sanaria Inc, the developer and sponsor of PfSPZ Vaccine. He was not responsible for the collection, recording or entry of the parasitological data used in this study. The other authors have no conflicts of interest.

Additional information

Supplementary information is available for this paper at <https://doi.org/10.1038/s41598-020-69268-5>.

Correspondence and requests for materials should be addressed to T.S. or C.D.

Reprints and permissions information is available at www.nature.com/reprints.

Publisher's note Springer Nature remains neutral with regard to jurisdictional claims in published maps and institutional affiliations.



Open Access This article is licensed under a Creative Commons Attribution 4.0 International License, which permits use, sharing, adaptation, distribution and reproduction in any medium or format, as long as you give appropriate credit to the original author(s) and the source, provide a link to the Creative Commons license, and indicate if changes were made. The images or other third party material in this article are included in the article's Creative Commons license, unless indicated otherwise in a credit line to the material. If material is not included in the article's Creative Commons license and your intended use is not permitted by statutory regulation or exceeds the permitted use, you will need to obtain permission directly from the copyright holder. To view a copy of this license, visit <http://creativecommons.org/licenses/by/4.0/>.

© The Author(s) 2020