


Rock-crushing derived hydrogen directly supports a methanogenic community: significance for the deep biosphere

Ronald John Parkes, ^{1*} Sabrina Berlendis,^{1†}
Erwan G. Roussel,^{1†} Hasiliza Bahruji,²
Gordon Webster,^{1,3} Anthony Oldroyd,¹
Andrew J. Weightman,³ Michael Bowker,²
Philip R. Davies² and Henrik Sass¹

¹School of Earth and Ocean Sciences, Main Building, Park Place, Cardiff University, Cardiff, CF10 3AT, Wales, UK.

²Cardiff Catalysis Institute, School of Chemistry, Cardiff University, Cardiff, CF10 3AT, Wales, UK.

³School of Biosciences, Sir Martin Evans Building, Cardiff University, Museum Avenue, Cardiff, CF10 3AX, Wales, UK.

Summary

Microbial populations exist to great depths on Earth, but with apparently insufficient energy supply. Earthquake rock fracturing produces H₂ from mechanochemical water splitting, however, microbial utilization of this widespread potential energy source has not been directly demonstrated. Here, we show experimentally that mechanochemically generated H₂ from granite can be directly, long-term, utilized by a CH₄ producing microbial community. This is consistent with CH₄ formation in subsurface rock fracturing in the environment. Our results not only support water splitting H₂ generation as a potential deep biosphere energy source, but as an oxidant must also be produced, they suggest that there is also a respiratory oxidant supply in the subsurface which is independent of photosynthesis. This may explain the widespread distribution of facultative aerobes in subsurface environments. A range of common rocks were shown to produce mechanochemical H₂, and hence, this process should be widespread in the

subsurface, with the potential for considerable mineral fuelled CH₄ production.

Introduction

The majority of prokaryotes on Earth live in the subsurface and are present to depths in excess of 3 km (Parkes *et al.*, 2014). These prokaryotes are far away from photosynthetically derived organic matter and oxygen and are under severe energy limitation (Hoehler and Jorgensen, 2013). Therefore, subsurface microorganisms may be more reliant on the geosphere for energy supply (Pedersen, 2000), including H₂ which has a range of geosphere sources. For example: (i) oxidation of ferrous iron containing minerals, predominantly at elevated temperatures – serpentinization (Holm *et al.*, 2015); (ii) radiolysis of water (Lin *et al.*, 2005); (iii) pyrite formation from FeS and H₂S (Drobner *et al.*, 1990); and (iv) high temperature conversion of water in minerals into H₂ and peroxy linkages (Freund, 1985). Low temperature (~20 °C) basalt weathering/oxidation had been suggested to fuel a H₂-based microbial ecosystem in the Columbia River Basalt Aquifer (Stevens and McKinley, 1995). However, this community subsequently was considered to be heterotrophic instead, as little H₂ formation occurred under simulated *in situ* conditions and also because ferrous iron concentrations would have been limiting (Anderson *et al.*, 1998). Despite this, total H₂ flux in continental rocks has been suggested to be highly significant at 0.36–2.27 × 10¹¹ mol per year (Lollar *et al.*, 2014), and comparable to the seafloor hydrothermal H₂ fluxes that support spectacular marine ecosystems. This flux would help explain the large terrestrial subsurface biosphere, but H₂ from water radiolysis and serpentinization would be restricted to rocks with radioactive compounds or ferrous iron minerals respectively.

Another source of geologically-generated H₂ is from mechanochemical splitting of water due to free radical reactions on fractured rock surfaces (Kita *et al.*, 1982; Freund *et al.*, 2002) or rocks under tension (Balk *et al.*, 2009). However, mechanochemical H₂ formation is rarely considered as a deep biosphere energy source despite this process being widespread and not limited to a few specific rock types (Kita *et al.*, 1982; Freund *et al.*, 2002). Although fracturing is concentrated around earthquake zones (Wakita

Received 10 July, 2017; accepted 21 November, 2018. *For correspondence. E-mail parkesrj@cf.ac.uk; Tel. +44(0)2920874326; Fax +44(0)2920874326. †Present address: Laboratoire de Microbiologie des Environnements Extrêmes, UMR6197, IFREMER, CNRS, UBO, Technopôle Brest Iroise, Plouzané, France.

© 2018 The Authors. *Environmental Microbiology Reports* published by Society for Applied Microbiology and John Wiley & Sons Ltd. This is an open access article under the terms of the Creative Commons Attribution License, which permits use, distribution and reproduction in any medium, provided the original work is properly cited.

et al., 1980; Brauer et al., 2005), rock comminution during erosion (Telling et al., 2015) and seismic events (Sleep and Zoback, 2007), are also sources of mechanochemical H₂ and together these should be widespread in the subsurface. Estimates of mechanochemically produced H₂ at 3.4×10^{16} mol per year (Hirose et al., 2011; 2012) show that it is a larger global H₂ source than serpentinization and water radiolysis combined. In addition, the presence of CH₄ in earthquake zones (Brauer et al., 2005) suggests that some of this mechanically produced H₂ is being used directly by subsurface methanogens.

However, it is unknown if the production rates and concentrations of mineral-H₂, the conditions for its production (e.g. temperature and pressures) and/or the by-products of the reactions (e.g. highly reactive oxygen species), would actually enable utilization by anaerobic microbial communities. Investigating whether mechanically-produced H₂ can be directly utilized by prokaryotic communities is not only important for understanding deep biosphere energy sources, if a significant amount of this H₂ is utilized to form CH₄, this would also be important for accurate quantification of greenhouse gas formation and global warming. Furthermore, mechanochemical-H₂ formation may have been important for early life on Earth and could potentially maintain subsurface biospheres on other planets (McMahon et al., 2016). We, therefore, conducted laboratory rock-crushing experiments under optimal conditions for H₂-utilizing methanogens to test whether mechanochemical-H₂ formation could directly fuel microbial activity, and hence, potentially microbial ecosystems.

Results and discussion

Mineral-H₂ formation on crushing

To determine the mineral H₂ formation conditions for subsequent microbial utilization, pure silica (2 g) in vials with aluminium balls under anaerobic conditions were heated at 25, 38, 67, 84 and 100 °C for 30 min and then contents ground using a ball mill (60 min, Supporting Information Fig. S1A; see Supporting Information for Experimental procedures). The vials were then heated for a further 30 min before headspace gas was analysed. Above ~40 °C H₂ concentrations increased with temperature ($P < 0.05$), reaching 178 nmol H₂ L⁻¹ headspace at 100 °C for silica only with milling. All controls, including silica plus water, were not significantly different from an empty vial (Fig. 1). These results show that milling and silica were essential for producing significant H₂, and that other potential sources of H₂ on heating, such as thermal breakdown of organic matter contaminants and rubber stoppers, were negligible sources of H₂ under the prevailing conditions. Furthermore, milling of water with silica produced considerably less H₂ compared with silica without water (Fig. 1),

suggesting that the added water reduced milling efficiency. This further emphasizes the importance of milling for H₂ formation as does the experiment with silica plus water without milling which produced even less H₂ (~20 nmol L⁻¹). Dry grinding of minerals produces H₂ with the water coming from between mineral grains or from reaction of hydroxyl groups (Kameda et al., 2004). Although H₂ formation from silica, and granite, has been shown to increase with temperature, up to a maximum at ~200–220 °C (Kita et al., 1982), lower temperatures are required for direct coupling with microbial H₂ utilization, as the upper temperature for prokaryotes and methanogenesis is around 120 °C (Takai et al., 2008). Hence, there is a compromise between the temperature required for maximum mechanochemical mineral-H₂ formation, and the temperature range enabling its direct microbial utilization. From the temperature range tested (Fig. 1) 67 °C was selected for further experiments to enable subsequent coupling with the deep-sea, thermophilic methanogen *Methanothermococcus okinawensis* (growth optimum 60–65 °C, range 40–75 °C, Takai et al., 2002). Prokaryotes at similar thermophilic temperatures have been detected in deep, subsurface sediments (Roussel et al., 2008) and in water from deep rock fracture zones (Takai et al., 2003, Moser et al., 2005).

To enhance mineral-H₂ formation at 67 °C, silica milling was conducted in an oil bath (Supporting Information Fig. S1B) to provide extended periods of heated milling and this was combined with headspace flushing (Fig. 2).

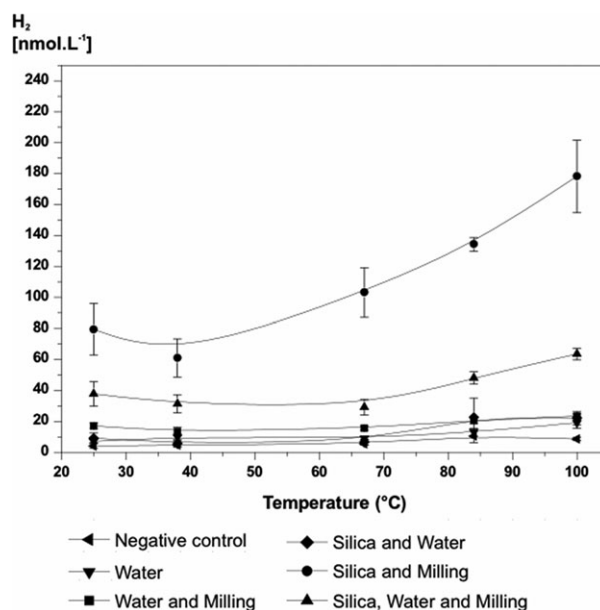


Fig. 1. Effect of milling on H₂ formation from silica between 25 and 100 °C (mean of triplicates and standard error bars shown).

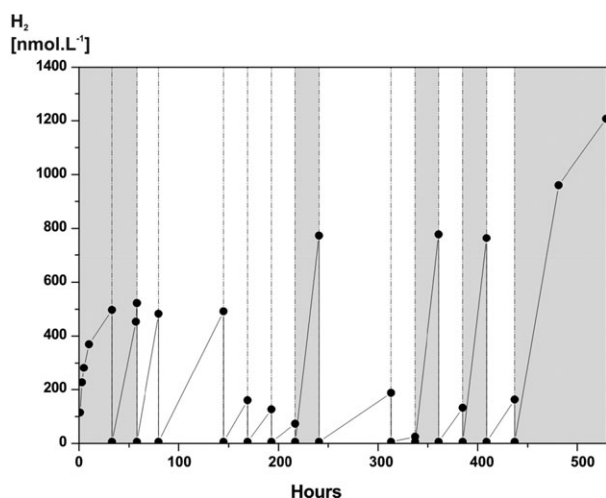


Fig. 2. Effect of milling on H_2 from silica at 67 °C. Dotted lines denote headspace flushing (x3 with oxygen free nitrogen). Shading shows milling intervals.

Initially with milling, there was rapid H_2 formation decreasing slightly after ~30 h. However, after headspace flushing H_2 rapidly returned to its original concentration, ~490 nmol L^{-1} . Flushing was repeated another three times up to ~140 h, with the same result, even though milling had stopped after ~55 h. After a further three flushes up to 216 h, the amount of H_2 produced reduced considerably (lowest ~90 nmol L^{-1}), indicating that most reactive surfaces had been utilized. However, flushing had resulted in a ~2.5 times increase in the amount of H_2 formed. Another period of milling increased H_2 to above the initial concentration (~760 nmol L^{-1}), although subsequent flushing resulted in only low H_2 concentrations (Fig. 2). This sequence was repeated in another two milling periods, followed by an extra period without flushing which yielded the maximum H_2 concentrations of 1213 nmol L^{-1} , after a total of ~530 h. Free radical concentrations also increased with crushing time (Supporting Information Fig. S2) corresponding with increasing H_2 formation. These results show that continuous H_2 formation can be obtained by a mixture of (i) additional crushing, and (ii) H_2 removal by headspace flushing. The latter is consistent with feedback inhibition and suggests that microbial H_2 consumption might sustain or even enhance H_2 formation. Cumulative H_2 formation totalled 7186 nmol L^{-1} .

Similar results were obtained with crushing basalt with total H_2 production after ~120 h of 350 nmol L^{-1} , with one initial milling period (~75 h). These results are similar to the initial H_2 formation in low temperature basalt weathering experiments conducted previously by Anderson and colleagues (1998), who also suggested that initial H_2 formation was possibly due to reactive mineral surfaces, however, our milling was probably more

effective, resulting in significant H_2 formation after headspace flushing, which did not occur in the Anderson *et al.* experiments. Milling at 67 °C for ~30 h also produced H_2 from other minerals in the order of highest concentrations: granite > quartz > silica and borosilicate glass > basalt, ranging in maximum concentration from 1133 to 142 nmol L^{-1} (Supporting Information Fig. S3). Mineralogical changes with crushing granite, including reduction of quartz and formation of new minerals (Supporting Information Fig. S4, overall decrease in peaks labelled Q for quartz, including some also with other minerals and appearance of additional peaks respectively), confirmed that H_2 generation occurred together with breakage of Si–O bonds in phyllosilicates, which together with free radical formation (Supporting Information Fig. S2) is consistent with mechanochemical reactions.

Coupling mineral derived H_2 with methanogenesis

For further experiments, the high H_2 producing granite was used in increasing amounts (15–40 g) with 30 g giving maximum H_2 production and then this amount was subsequently used as standard. Under these conditions ~500 $\mu\text{mol } L^{-1}$ H_2 was produced, but there was no H_2 consumption or CH_4 production when the system was inoculated with a *M. okinawensis* culture (Supporting Information Fig. S1D), despite repeated attempts (Supporting Information Fig. S5). Under our culture conditions the H_2 threshold for significant CH_4 production by *M. okinawensis* was between ~200 and 1500 $\mu\text{mol } L^{-1}$, so sufficient H_2 was present in our mineral experiments for the methanogen to use. However, mechanochemical splitting of water also produces highly reactive oxygen species (Balk *et al.*, 2009), which could have inhibited this strictly anaerobic methanogen. Subsurface environments are generally reducing (e.g. H_2S and reduced metal species), so reactive oxygen species would be reduced, and/or be used directly or indirectly (oxidized products of reduced species - thiosulfate and metal oxides) by facultative aerobes/anaerobes. This would not substantially occur in our pure culture methanogen experiments. Therefore, we specifically enriched a methanogenic community (see Supporting Information Fig. S6 and Experimental Procedures) under low oxygen concentrations (and low H_2 , ~400 $\mu\text{mol } L^{-1}$) to inoculate further experiments, which could both cope with oxidized species and produce CH_4 from H_2 (Fig. 4, Supporting Information Fig. S1). The same enrichment subculture was then used to inoculate all subsequent experiments (Supporting Information Fig. S6b), to ensure that the community composition was identical for each.

Three experiments were conducted each with a different grinding mechanism to ensure that H_2 formation was not restricted to a specific grinding process. Experiment 1 - rotation with granite balls; Experiment 2 - grinding with

a magnetic stirring bar and Experiment 3 - grinding with an abrasive resistant bar to prevent the iron magnet being exposed and contributing to H₂ formation. All experiments resulted in H₂ consumption and CH₄ production after inoculation with the methanogenic community (Fig. 3). In Experiments 1 and 2, CH₄ production was almost twice the amount expected from measured H₂ consumption (4H₂ + CO₂ → CH₄ + 2H₂O), which presumably reflects simultaneous mineral-H₂ production and H₂ consumption by methanogens. In addition, enhanced H₂ formation similar to the effect of headspace flushing previously documented, and of a similar magnitude (Fig. 2), may be occurring due to the methanogenic H₂ consumption. In Experiment 3 (Fig. 3C), water (4 ml) was added after grinding for 682 h, to further increase H₂ formation (~500 μmol L⁻¹) and to demonstrate that the H₂ increase previously observed on addition of the inoculum in Experiments 1 and 2 (Fig. 3A and B) was due to increased water availability after grinding. After ~1266 h the experiment was inoculated and almost immediately H₂ was consumed and CH₄ produced. By ~250 h incubation most of the H₂ was removed (to ~20 μmol L⁻¹) and CH₄ then stabilized around 140 μmol L⁻¹. Shortly after this, grinding was restarted (after 1587 h) and CH₄ production restarted immediately, but for H₂ there was a delay of

~140 h before concentrations increased, presumably due to its initial consumption for methanogenesis. During this second phase of grinding, CH₄ and H₂ concentrations plateaued at ~160 and 115 μmol L⁻¹ respectively). Grinding was then stopped (2161 h) and H₂ and CH₄ (small decrease) production ceased. After ~60 h grinding was restarted and immediately H₂ was produced, CH₄ concentrations, however, decreased until the system was re-inoculated (inoculum presumably dried out), after which H₂ again was removed along with CH₄ production, some 2800 h/120 days after the beginning of the experiment. The initial period of methanogenesis was much more rapid in this experiment compared with Experiments 1 and 2 (2–4 times, Fig. 3), and the H₂:CH₄ ratio was as expected for hydrogenotrophic methanogenesis. The second period of CH₄ formation, however, was much slower, presumably reflecting the much lower H₂ concentrations and the H₂:CH₄ ratio was similar to the Experiments 1 and 2. Probably the large and very rapid initial phase of H₂ consumption in Experiment 3 masked the effect of continuing mineral H₂ formation. In controls, including an inoculated empty crushing bottle, and an autoclaved inoculum, no coupled H₂ removal and CH₄ production occurred (Supporting Information Fig. S7). Some CH₄ was released into the inoculated empty bottle control (max 26 μmol L⁻¹),

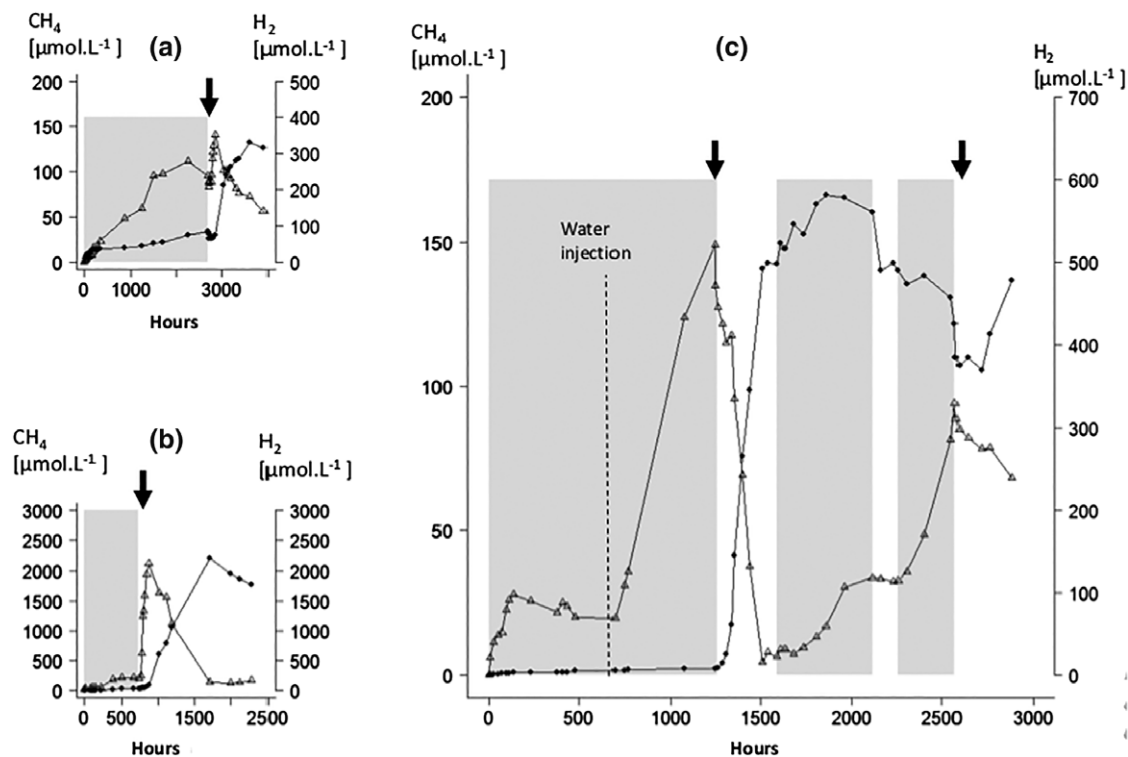


Fig. 3. Granite milling experiments at 67 °C showing H₂ consumption and CH₄ production when inoculated with a methanogenic community. a. Experiment 1: rotating with granite balls. b. Experiment 2 grinding with magnetic stirrer. c. Experiment 3: grinding with an abrasive resistant stirring bar. Triangle = H₂, solid circle = CH₄. Shading shows milling periods and arrow shows inoculation with methanogenic community.

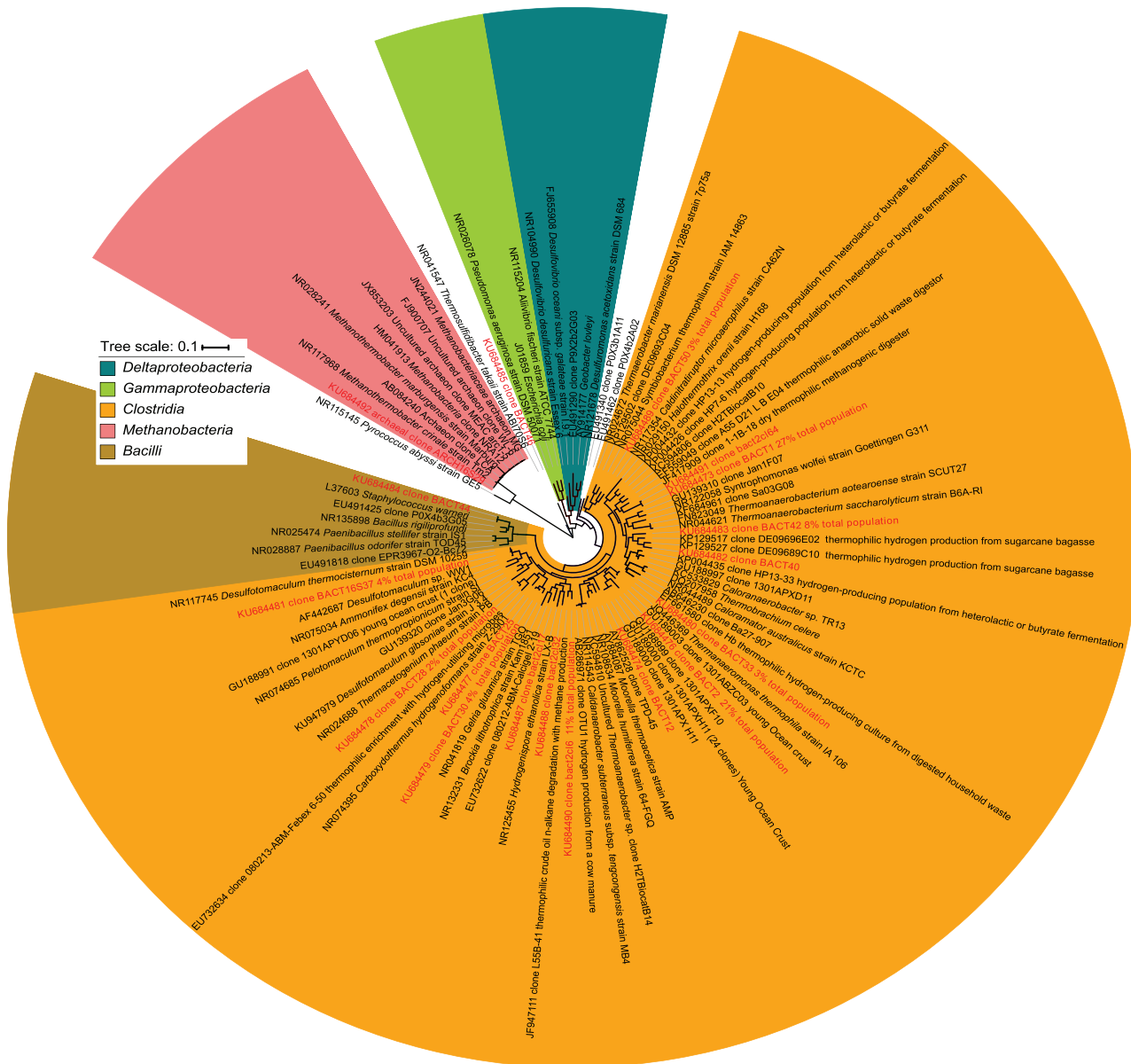


Fig. 4. Phylogenetic tree of bacterial and archaeal 16S rRNA gene diversity in the methanogenic community inoculum. Neighbour-joining tree prepared with MEGA 5.2.2 software (method: Jukes-Cantor model, bootstrap test: 500 replicates) and edited with the Interactive Tree of Life (ITOL) using sequences aligned with the ClustalW2 program. Sequences detected in this study are highlighted in red and bold.

but this represented only a fraction of the CH₄ produced in the inoculated mineral H₂ experiments. The controls demonstrate that CH₄ production was not a result of thermal breakdown of cells or organic matter in the inoculum. The rapid response to renewed mineral grinding (Fig. 3C) also demonstrates how tight and effective this mineral H₂ methanogenesis system is.

The methanogenic community

The composition of the methanogenic community was screened by methanogen functional *mcrA* gene and 16S

rRNA gene sequence analysis (Supporting Information Fig. S8 and Fig. 4). Only one methanogenic archaeon was detected in the inoculum and this had 96% (*mcrA* gene) and 99% (16S rRNA gene) nucleotide sequence similarity to *Methanothermobacter crinale*, a methanogen often isolated from subsurface oil and gas reservoirs and thought to develop co-operative relationships with *Bacteria* (Cheng *et al.*, 2011). In addition to the methanogen, the methanogenic community also contained several bacterial 16S rRNA gene sequences (Fig. 4), predominantly thermophilic *Firmicutes*, belonging to the orders *Thermomicrobiales*, and *Clostridiales*, including *Desulfotomaculum* species,

within the *Clostridia* class. Both of the above bacterial families commonly occur in the deep hot biosphere or deep subsurface environments (Aullo *et al.*, 2013; Parkes *et al.*, 2014, O'Sullivan *et al.*, 2015, Purkamo *et al.*, 2016). An association of methanogens with *Clostridiales* species have been shown to dominate in deep hot subterranean environments such as deep gold mines (Moser *et al.*, 2003). Many bacterial sequences were related to cultured species (45%), including those from hot springs (Perevalova *et al.*, 2013, *Brockia lithotrophica*, H₂-utilizing, obligate anaerobic, spore-former), where a H₂ driven methanogenic community has been documented (Chapelle *et al.*, 2002); hot salty environments (Cayol *et al.*, 1994, *Halothermothrix orenii*, an anaerobic, chemoorganotroph); and oil reservoirs (Nilsen *et al.*, 1996), and some have known syntrophic interactions with methanogens (Nilsen *et al.*, 1996, *Desulfotomaculum thermocisternum*, a thermophilic, H₂-utilizing, spore-forming sulfate-reducer). In addition, some *Desulfotomaculum* species have genes encoding for enzymes that can protect against reactive oxygen compounds (Spring *et al.*, 2009). In our system, the presence of *Desulfotomaculum* species with the methanogen could help methanogenesis to occur despite the presence of oxidized compounds. One of the most common sequences (15%) was related to uncultured *Bacteria* colonizing young ocean crust (Fig. 4), which probably supports significant autotrophic microbial biomass (Bach and Edwards, 2003). Comparison of the bacteria in our methanogenic community (see Supporting Information Fig. S9) with those detected in H₂-utilizing SLIME environments (Stevens and McKinley, 1995) such as aging and young ocean crust (Cowen *et al.*, 2003; Orcutt *et al.*, 2011) or thermophilic methanogenic community fed from cathode-derived hydrogen (Fu *et al.*, 2013) shows that bacteria in our methanogenic community were representative of populations fuelled by H₂.

Summary

These results demonstrate considerable H₂ formation from a range of common rocks and minerals by crushing induced mechanochemistry. This H₂ formation can be sustained by repeated crushing under anaerobic conditions and at temperatures (25–100 °C) well within the range of prokaryotes. Higher temperatures produce even greater amounts of H₂ (up to a maximum at ~200–220 °C, Kita *et al.*, 1982) and this could diffuse upwards into the temperature limited base of the subsurface biosphere. Granite derived H₂ was directly utilized by a CH₄-producing community in which the methanogen could effectively compete for H₂ (over the 120 days of the experiment), and which was resilient to the oxidized species also mechanochemically produced, but not by a pure methanogen culture on

its own. However, this production of oxidized species is also environmentally important as this could help sustain respiratory prokaryotes, independent of oxygen from surface photosynthesis, in the deep subsurface, including those using H₂ or H₂-derived products, such as CH₄. Subsurface oxidants may also help explain the considerable number of facultative aerobic prokaryotes in the deep subsurface (Pedersen, 1993; Miettinen *et al.*, 2015).

Estimated earthquake-derived H₂ flux is five orders of magnitude higher (Hirose *et al.*, 2012) than from radiolysis and serpentinization (Lollar *et al.*, 2014) and, therefore, should be a much more important energy source for the deep biosphere, and provide a continuing fuel for deep CH₄ formation and flux to the atmosphere, which is second only to wetland emissions (Etiope, 2012). If all of the estimated flux of mechanochemically derived H₂ (Freund *et al.*, 2002; Hirose *et al.*, 2012) was converted to CH₄ this would be ~1000 times higher than current estimates of geological CH₄ greenhouse gas production (Kirschke *et al.*, 2013). As tectonics on Earth probably occurred by ~3 Ga (Hirose *et al.*, 2011), mechanochemical reaction products would also have been available to early life. Mechanochemistry from landslides, glacial bedrock comminution (Telling *et al.*, 2015) and meteorite impacts add further to this tectonically driven water splitting, rock energy source, which could occur on many other planets (Hurowitz *et al.*, 2007; Yin, 2012).

Acknowledgements

This research was supported by the Natural Environment Research Council UK, grant number NE/H02042X/1 and for GW NE/J011177/1. Professor Tom Blenkinsop, Cardiff University, read and commented on a draft version of the paper.

Author contributions

RJP designed the project and wrote the paper. SB, EGR, GW and HB conducted the practical work, acquired and analysed data, and contributed to paper writing. All co-authors contributed to the final version of the manuscript. Data supporting the paper and Experimental Procedures are presented in the Supplementary Information. GenBank Sequence accession numbers KU684473 to KU684492.

References

- Anderson, R.T., Chapelle, F.H., and Lovley, D.R. (1998) Evidence against hydrogen-based microbial ecosystems in basalt aquifers. *Science* **281**: 976–977.
- Aullo, T., Ranchou-Peyruse, A., Ollivier, B., and Magot, M. (2013) *Desulfotomaculum* spp. and related gram-positive sulfate-reducing bacteria in deep subsurface environments. *Front Microbiol* **4**: 1–12.

- Bach, W., and Edwards, K.J. (2003) Iron and sulfide oxidation within the basaltic ocean crust: implications for chemolithoautotrophic microbial biomass production. *Geochim Cosmochim Acta* **67**: 3871–3887.
- Balk, M., Bose, M., Ertem, G., Rogoff, D.A., Rothschild, L.J., and Freund, F.T. (2009) Oxidation of water to hydrogen peroxide at the rock-water interface due to stress-activated electric currents in rocks. *Earth Planet Sci Lett* **283**: 87–92.
- Brauer, K., Kampf, H., Faber, E., Koch, U., Nitzsche, H.M., and Strauch, G. (2005) Seismically triggered microbial methane production relating to the Vogtland - NW Bohemia earthquake swarm period 2000, Central Europe. *Geochim J* **39**: 441–450.
- Cayol, J.L., Ollivier, B., Patel, B.K., Prensier, G., Guezennec, J., and Garcia, J.L. (1994) Isolation and characterization of *Halothermothrix orenii* gen. nov., sp. nov., a halophilic, thermophilic, fermentative, strictly anaerobic bacterium. *Int J Syst Bacteriol* **44**: 534–540.
- Chapelle, F.H., O'Neill, K., Bradley, P.M., Methe, B.A., Ciuffo, S. A., Knobel, L.L., and Lovley, D.R. (2002) A hydrogen-based subsurface microbial community dominated by methanogens. *Nature* **415**: 312–315.
- Cheng, L., Dai, L., Li, X., Zhang, H., and Lu, Y. (2011) Isolation and characterization of *Methanothermobacter crinale* sp nov., a novel Hydrogenotrophic methanogen from the Shengli oil field. *Appl Environ Microbiol* **77**: 5212–5219.
- Cowen, J.P., Giovannoni, S.J., Kenig, F., Johnson, H.P., Butterfield, D., Rappe, M.S., et al. (2003) Fluids from aging ocean crust that support microbial life. *Science* **299**: 120–123.
- Damm, C., and Peukert, W. (2009) Kinetics of radical formation during the mechanical activation of quartz. *Langmuir* **25**: 2264–2270.
- Drobner, E., Huber, H., Wächtershäuser, G., Rose, D., and Stetter, K.O. (1990) Pyrite formation linked with hydrogen evolution under anaerobic conditions. *Nature* **346**: 742–744.
- Etiopie, G. (2012) Climate science: methane uncovered. *Nat Geosci* **5**: 373–374.
- Freund, F. (1985) Conversion of dissolved "water" into molecular hydrogen and peroxy linkages. *J Non Cryst Solids* **71**: 195–202.
- Freund, F., Dickinson, J.T., and Cash, M. (2002) Hydrogen in rocks: an energy source for deep microbial communities. *Astrobiology* **2**: 83–92.
- Fu, Q., Kobayashi, H., Kuramochi, Y., Xu, J., Wakayama, T., Maeda, H., and Sato, K. (2013) Bioelectrochemical analyses of a thermophilic biocathode catalyzing sustainable hydrogen production. *Int J Hydrogen Energy* **38**: 15638–15645.
- Hirose, T., Kawagucci, S., and Suzuki, K. (2011) Mechanoradical H₂ generation during simulated faulting: implications for an earthquake-driven subsurface biosphere. *Geophys Res Lett* **38**: 3.
- Hirose, T., Kawagucci, S., and Suzuki, K. (2012) Correction to "Mechanoradical H₂ generation during simulated faulting: implications for an earthquake-driven subsurface biosphere". *Geophys Res Lett* **39**: L23304.
- Hoehler, T.M., and Jorgensen, B.B. (2013) Microbial life under extreme energy limitation. *Nat Rev Microbiol* **11**: 83–94.
- Holm, N.G., Oze, C., Mousis, O., Waite, J.H., and Guilbert-Lepoutre, A. (2015) Serpentinization and the formation of H₂ and CH₄ on celestial bodies (planets, moons, comets). *Astrobiology* **15**: 587–600.
- Hurowitz, J.A., Tosca, N.J., McLennan, S.M., and Schoonen, M.A.A. (2007) Production of hydrogen peroxide in Martian and lunar soils. *Earth Planet Sci Lett* **255**: 41–52.
- Kameda, J., Saruwatari, K., and Tanaka, H. (2004) H₂ generation during dry grinding of kaolinite. *J Colloid Interface Sci* **275**: 225–228.
- Kirschke, S., Bousquet, P., Ciais, P., Saunois, M., Canadell, J. G., Dlugokencky, E.J., et al. (2013) Three decades of global methane sources and sinks. *Nat Geosci* **6**: 813–823.
- Kita, I., Matsuo, S., and Wakita, H. (1982) H₂ generation by reaction between H₂O and crushed rock - an experimental study on H₂ degassing from the active fault zone. *J Geophys Res* **87**: 789–795.
- Lin, L.H., Hall, J., Lippmann-Pipke, J., Ward, J.A., Lollar, M. D., Rothmel, R., et al. (2005) Radiolytic H₂ in continental crust: nuclear power for deep subsurface microbial communities. *Geochem Geophys Geosyst* **6**: Q07003.
- Lollar, B.S., Onstott, T.C., Lacrampe-Couloume, G., and Ballentine, C.J. (2014) The contribution of the Precambrian continental lithosphere to global H₂ production. *Nature* **516**: 379–382.
- McMahon, S., Parnell, J., and Blamey, N.J. (2016) Evidence for Seismogenic hydrogen gas, a potential microbial energy source on earth and Mars. *Astrobiology* **16**: 690–702.
- Miettinen, H., Kietäväinen, R., Sohlberg, E., Numminen, M., Ahonen, L., and Itävaara, M. (2015) Microbiome composition and geochemical characteristics of deep subsurface high-pressure environment, Pyhäsalmi mine Finland. *Front Microbiol* **6**: 1203.
- Moser, D.P., Gihring, T.M., Brockman, F.J., Fredrickson, J.K., Balkwill, D.L., Dollhopf, M.E., et al. (2005) *Desulfotomaculum* and *Methanobacterium* spp. dominate a 4- to 5-kilometer-deep fault. *Appl Environ Microbiol* **71**: 8773–8783.
- Moser, D.P., Onstott, T.C., Fredrickson, J.K., Brockman, F. J., Balkwill, D.L., Drake, G.R., et al. (2003) Temporal shifts in the geochemistry and microbial community structure of an ultradeep mine borehole following isolation. *Geomicrobiol J* **20**: 517–548.
- Nilsen, R.K., Torsvik, T., and Lien, T. (1996) *Desulfotomaculum thermocisternum* sp nov, a sulfate reducer isolated from a hot North Sea oil reservoir. *Int J Syst Bact* **6**: 397–402.
- O'Sullivan, L.A., Roussel, E.G., Weightman, A.J., Webster, G., Hubert, C., Bell, E., et al. (2015) Survival of *Desulfotomaculum* spores from estuarine sediments after serial autoclaving and high-temperature exposure. *ISME J* **9**: 922–933.
- Orcutt, B.N., Bach, W., Becker, K., Fisher, A.T., Hentscher, M., Toner, B.M., et al. (2011) Colonization of subsurface microbial observatories deployed in young ocean crust. *ISME J* **5**: 692–703.
- Parkes, R.J., Cragg, B., Roussel, E., Webster, G., Weightman, A., and Sass, H. (2014) A review of prokaryotic populations and processes in sub-seafloor sediments, including biosphere:geosphere interactions. *Mar Geol* **352**: 409–425.
- Pedersen, K. (1993) The deep subterranean biosphere. *Earth Sci Rev* **34**: 243–260.
- Pedersen, K. (2000) Exploration of deep intraterrestrial microbial life: current perspectives. *FEMS Microbiol Lett* **185**: 9–16.
- Perevalova, A.A., Kublanov, I.V., Baslerov, R.V., Zhang, G., and Bonch-Osmolovskaya, E.A. (2013) *Brockia lithotrophica* gen. nov., sp. nov., an anaerobic thermophilic bacterium from a terrestrial hot spring. *Int J Syst Evol Microbiol* **63**: 479–483.

- Purkamo, L., Bomberg, M., Kietäväinen, R., Salavirta, H., Nyssönen, M., Nuppenen-Puputti, M., *et al.* (2016) Microbial co-occurrence patterns in deep Precambrian bedrock fracture fluids. *Biogeosciences* **13**: 3091–3108.
- Roussel, E.G., Cambon-Bonavita, M.A., Querellou, J., Cragg, B.A., Webster, G., Prieur, D., and Parkes, R.J. (2008) Extending the sub-sea-floor biosphere. *Science* **320**: 1046–1046.
- Sleep, N.H., and Zoback, M.D. (2007) Did earthquakes keep the early crust habitable? *Astrobiology* **7**: 1023–1032.
- Spring, S., Lapidus, A., Schröder, M., Gleim, D., Sims, D., Meincke, L., *et al.* (2009) Complete genome sequence of *Desulfotomaculum acetoxidans* type strain (5575(T)). *Stand Genomic Sci* **1**: 242–253.
- Stevens, T.O., and McKinley, J.P. (1995) Lithoautotrophic microbial ecosystems in deep basalt aquifers. *Science* **270**: 450–454.
- Takai, K., Inoue, A., and Horikoshi, K. (2002) *Methanothermococcus okinawensis* sp. nov., a thermophilic, methane-producing archaeon isolated from a Western Pacific deep-sea hydrothermal vent system. *Int J Syst Evol Microbiol* **52**: 1089–1095.
- Takai, K., Kobayashi, H., Nealson, K.H., and Horikoshi, K. (2003) *Sulfurihydrogenibium subterraneum* gen. nov., sp. nov., from a subsurface hot aquifer. *Int J Syst Evol Microbiol* **53**: 823–827.
- Takai, K., Nakamura, K., Toki, T., Tsunogai, U., Miyazaki, M., Miyazaki, J., *et al.* (2008) Cell proliferation at 122°C and isotopically heavy CH₄ production by a hyperthermophilic methanogen under high-pressure cultivation. *Proc Natl Acad Sci U S A* **105**: 10949–10954.
- Telling, J., Boyd, E.S., Bone, N., Jones, E.L., Tranter, M., MacFarlane, J.W., *et al.* (2015) Rock comminution as a source of hydrogen for subglacial ecosystems. *Nat Geosci* **8**: 851–855.
- Wakita, H., Nakamura, Y., Kita, I., Fujii, N., and Notsu, K. (1980) Hydrogen release: new indicator of fault activity. *Science* **210**: 188–190.
- Yin, A. (2012) Structural analysis of the Valles Marineris fault zone: possible evidence for large-scale strike-slip faulting on Mars. *Lithosphere* **4**: 286–330.

Supporting Information

Additional Supporting Information may be found in the online version of this article at the publisher's web-site:

Fig. S1. Apparatus used for milling experiments: A. Ball mill (150 r.p.m.). B. Rotary milling in a 67 °C oil-bath with 25 ml Wheaton® vials (150 r.p.m.). C. Rotary milling in a 67 °C oil-bath with 100 ml Duran® bottles. D. Grinding with a magnetic

stirring bar in a beaker water-bath on heated-stirrer at 67 °C, with or without a separate methanogenic community inoculum.

Fig. S2. Free radical production from milled silica at 67 °C based on consumption of a radical scavenger (DPPH: Damm & Peukert (2009)). Black squares are milled silica; red circles are the non-milled negative control.

Fig. S3. H₂ and CO formation during milling a range of minerals at 67 °C. Circles = granite, triangles = quartz, squares = silica, star = borosilicate glass, diamonds = basalt.

Fig. S4. XRD profiles of fresh powdered granite initially used in the experiment (top) and the granite after crushing at 67 °C with a magnetic stirrer (bottom).

Fig. S5. Inoculation of granite derived H₂ experiments with *Methanothermococcus okinawensis* at 67 °C and changes in CH₄ (filled circle) and H₂ concentrations (triangles). Shaded area represents the grinding period; dotted line denotes injection of sterile medium to enhance H₂ production and arrows are injection of the methanogen pure culture. Replicate experiments a and b.

Fig. S6. Enrichment of air tolerant methanogenic community at 67 °C using sediments from the Tamar Estuary, UK in mineral medium: a) initial enrichment slurry with successive air additions, b) enrichment after successive subculture at low H₂ concentrations in a vial mimicking experimental conditions. CH₄ (filled circle) and H₂ (triangles).

Fig. S7. Control experiments at 67 °C with a) autoclaved (x3) enrichment inoculated into an experiment with 30 g of crushed granite (shaded area is the grinding period) and H₂ adjusted to ~300 μmol L⁻¹. b) Active methanogenic enrichment inoculated into an empty device. Experiment 1 shown by solid lines and Experiment 2 by dashed lines. CH₄ (filled circle) and H₂ (triangles).

Fig. S8. Phylogenetic tree of methanogen functional *mcrA* gene clones from the methanogenic community inoculum. All clones were closely related (96%) to *Methanothermobacter crinale*.

Fig. S9. Comparison at the class-level of bacterial 16S rRNA genes detected in this study with other studies of subsurface environments. 1: Parkes *et al.*, (this study) crushing experiments, hot condition; 2: Fu *et al.* (2013) cathode hydrogen production sustaining methanogenic community, hot condition; 3: Cowen *et al.*, (2003) aging ocean crust, hot condition; 4: Orcutt *et al.*, (2011) young ocean crust, hot condition; 5: Diksmas *et al.*, (2016) dark C fixation in coastal marine sediments, cold condition; 6: Le Campion *et al.*, unpublished, continental subsurface aquifer; 7–9: Dong *et al.*, (2014) 1.8 km deep subsurface Cambrian sandstone reservoir, thermophilic; 10–12: Edlund *et al.*, (2008) Baltic sea sediments, cold conditions (10 = redox depth -337 mV; 11 = redox depth - 169 mV; 12 = redox depth - 64 mV [b1]).