

# Colonize, radiate, decline: Unraveling the dynamics of island community assembly with Fijian trap-jaw ants

Cong Liu,<sup>1,2</sup> Eli M. Sarnat,<sup>1,3</sup> Nicholas R. Friedman,<sup>1</sup> Francisco Hita Garcia,<sup>1</sup> Clive Darwell,<sup>1</sup> Douglas Booher,<sup>1,4,5,6</sup> Yasuhiro Kubota,<sup>7</sup> Alexander S. Mikheyev,<sup>8,9</sup> and Evan P. Economo<sup>1</sup>

<sup>1</sup>Biodiversity and Biocomplexity Unit, Okinawa Institute of Science and Technology Graduate University, Onna, Okinawa, 904-0495, Japan

<sup>2</sup>E-mail: cong.liu0514@gmail.com

<sup>3</sup>Antwork Consulting LLC, Davis, California 95616

<sup>4</sup>Field Museum of Natural History, Chicago, Illinois 60605

<sup>5</sup>Department of entomology, University of Illinois, Urbana, Illinois 61801

<sup>6</sup>Georgia Museum of Natural History, Athens, Georgia 30602

<sup>7</sup>Faculty of Science, University of the Ryukyus, Nishihara, Okinawa, Japan

<sup>8</sup>Ecology and Evolution Unit, Okinawa Institute of Science and Technology Graduate University, Onna, Okinawa, 904-0495, Japan

<sup>9</sup>Evolutionary Genomics Research Group, Australian National University, Canberra, Australia

Received June 19, 2019

Accepted April 9, 2020

The study of island community assembly has been fertile ground for developing and testing theoretical ideas in ecology and evolution. The ecoevolutionary trajectory of lineages after colonization has been a particular interest, as this is a key component of understanding community assembly. In this system, existing ideas, such as the taxon cycle, posit that lineages pass through a regular sequence of ecoevolutionary changes after colonization, with lineages shifting toward reduced dispersal ability, increased ecological specialization, and declines in abundance. However, these predictions have historically been difficult to test. Here, we integrate phylogenomics, population genomics, and X-ray microtomography/3D morphometrics, to test hypotheses for whether the ecomorphological diversity of trap-jaw ants (*Strumigenys*) in the Fijian archipelago is assembled primarily through colonization or postcolonization radiation, and whether species show ecological shifts toward niche specialization, toward upland habitats, and decline in abundance after colonization. We infer that most Fijian endemic *Strumigenys* evolved *in situ* from a single colonization and have diversified to fill a large fraction of global morphospace occupied by the genus. Within this adaptive radiation, lineages trend to different degrees toward high elevation, reduced dispersal ability, and demographic decline, and we find no evidence of repeated colonization that displaces the initial radiation. Overall these results are only partially consistent with taxon cycle and associated ideas, while highlighting the potential role of priority effects in assembling island communities.

**KEY WORDS:** 3D geometric morphometrics, community assembly, formicidae, phylogenomics, population genomics, taxon cycle.

On remote islands, ecological communities assemble through transoceanic colonization and the subsequent evolution of lineages after colonization (MacArthur and Wilson 1967; War-

ren et al. 2015; Gillespie 2016). Their well-defined boundaries make them attractive model systems for studying the interplay of ecological processes, such as dispersal and competition, and

evolutionary processes such as adaptive shifts and speciation. Relevant ecoevolutionary theory ranges from the more stochastic perspectives, in which the central processes of dispersal and evolution are essentially unpredictable and lead to different outcomes for lineages (Hubbell 2001; Grant and Grant 2002; Fukami 2015), to more deterministic perspectives, in which lineages and communities assemble through regular pathways that are predictable and repeated (Losos et al. 1998; Gillespie 2004).

While such theorizing is nearly as old as biogeography, it has traditionally been difficult to test theoretical predictions and make strong links between observable static patterns and inferred dynamical processes (Warren et al. 2015). However, emerging data-rich methods, including phylogenomics, community-level population genomics, 3D imaging, and computational inference, give us a much broader window into the past and new opportunities to test longstanding ideas in biogeography (Economato and Sarnat 2012; Gillespie 2016; Cotoras et al. 2018).

Here, we examine a series of hypotheses about the community assembly of trap-jaw ants (*Strumigenys*) in Fiji, a remote archipelago in eastern Melanesia. *Strumigenys* is the most species-rich ant genus on this archipelago, which harbors a highly endemic ant fauna (Sarnat and Economato 2012) with several documented *in situ* radiations (Lucky and Sarnat 2010; Sarnat and Moreau 2011; Darwell et al. 2020). This Melanesian ant system was influential in the early development of island biogeography theory. In the 1950s, E.O. Wilson formulated two influential (but very different) ideas about how island communities assemble, the taxon cycle, and later his equilibrium theory of island biogeography. The taxon cycle hypothesis (Wilson 1959, 1961; Ricklefs and Bermingham 2002) has a more deterministic aspect. Inspired by patterns he observed through taxonomic work on Melanesian ants, Wilson (1959, 1961) proposed that lineages pass through phases of range expansion and contraction, associated with evolutionary niche shifts into and out of marginal habitats. On remote islands, lineages arrive at disturbed lowland habitats and subsequently evolve on trajectories toward the upland interior, eventually exhibiting ecomorphological specialization and a decline in both abundance and ecological dominance (Wilson 1959, 1961). Wilson (1959, 1961) envisioned new “expanding” lineages occasionally arriving and outcompeting the species derived from past colonizations, possibly even pushing them extinct. The taxon cycle has drawn interest by those analyzing various systems (e.g., Ricklefs and Cox 1972; Ricklefs and Bermingham 1999; Ricklefs and Bermingham 2002; Cook et al. 2008; Jönsson et al. 2014), as well as criticism (e.g., Pregill and Olson 1981; Losos 1992), but remains viewed (at least by some) as still a theoretically relevant idea in island biogeography (Ricklefs and Bermingham 2002; Steinbauer 2016; Whittaker et al. 2017). Recently, there has been renewed interest in testing its predictions using the original system that inspired it: Melanesian ants (Economato and Sarnat 2012;

Economato et al. 2015; Matos-Maraví et al. 2018a; Matos-Maraví et al. 2018b; Darwell et al. 2020).

Both Wilson’s original articles and subsequent works have touched on many different issues under the framework of the taxon cycle, making it sometimes unclear what exactly is being tested. However, most formulations of the taxon cycle include components that are more general themes discussed in the biogeographic literature. Rather than seek to test the taxon cycle as a singular hypothesis, we frame our study around these more general themes.

First, there is a question of whether the ecological diversity of the island community is assembled primarily through dispersal assembly or *in situ* radiation. The latter can occur in isolated islands when colonization is very infrequent (Whittaker 1998; Heaney 2000; Valente et al. 2020), where arriving lineages may take advantage of ecological opportunities (Schluter 2000). This can also occur, however, when dispersal rates are habitat dependent (Sukumaran and Knowles 2018), leading certain habitats to be colonized first on the island, followed by evolution of lineages into other “empty” niches or habitats. The particular habitats that are most connected may vary by taxon (Gillespie et al. 2012). For example, migrating birds may more frequently deposit plant propagules at high elevations in Hawaii, leading to greater colonization rates of high elevation forests (Carlquist 1967). In the case of Melanesian ants, it is likely that coastal, high-disturbance habitats have higher connectivity, because rafting is thought to be a primary long-distance dispersal mechanism of ants (Wilson 1959, 1961). Adaptation to such habitats facilitates range expansion of a lineage, while lineages adapted to high-elevation interior habitats do not disperse long distances and colonize similar habitats in remote islands. Evidence for this habitat-dependent dispersal has been found for Indo-Pacific ants including the genus *Pheidole* (Economato et al. 2015), the genus *Camponotus* (Clouse et al. 2015), the *Prenolepis*-genus group (Matos-Maraví et al. 2018a), and *Odontomachus* (Matos-Maraví et al. 2018b). Quantitative approaches are now available to test this statistically (Sukumaran et al. 2015; Matzke 2016; Sukumaran and Knowles 2018).

The fact that dispersal is habitat dependent, however, does not in itself mean that niches can shift after colonization and assemble the community. If niches are conserved after colonization, low elevation species should be more related to mainland low elevation species than to high elevation species in the same archipelago. In the taxon cycle hypothesis (Wilson 1959, 1961; Ricklefs and Bermingham 2002), niche shifts and niche specializations occur, as the lineage penetrates from the marginal habitats into the interior. Thus, disturbed coastal habitats are the “door” through which lineages first pass and (may) subsequently radiate to assemble the island community. The evidence here is a bit more fragmentary. Building on an inventory of the Fijian ants (Sarnat and Economato 2012), Economato and Sarnat (2012) showed

that level of endemism is correlated to habitat affinity and elevation across the entire fauna, with the most endemic ants in Fiji being restricted to more pristine habitats and higher elevations. This is the pattern one would expect from directional niche shifts after colonization, but without phylogenetic information it is far from sufficient to show that they did occur (e.g., Losos 1992). Both Sarnat and Moreau (2011) and Economo and Sarnat (2012) used phylogenetic methods to show that high-elevation, morphologically specialized lineages of the ant genus *Pheidole* evolved *in situ* from more generalized ancestors, even though they resemble spinescent forms found around the Indo-Pacific (Sarnat et al. 2017). While this is a convincing example of niche shift, the extent to which it represents a special case restricted to *Pheidole* or a general pattern observed among Fiji's many other endemic ant radiations is unclear.

Another theme in both the taxon cycle and island biogeography in general is that after colonization, lineages undergo demographic decline and loss of dispersal ability (Wilson 1959, 1961; MacArthur and Wilson 1967; Gillespie 2002, Gillespie et al. 2012; Burns 2019). This could be because of an increase in ecological specialization leading to reduced competitive ability and increased vulnerability (Ricklefs and Bermingham 1999; Ricklefs and Bermingham 2002). This prediction has traditionally been difficult to test, and one weakness of many historical taxon cycle analyses is that lower dispersal ability for later-stage endemic species was often inferred from their narrow ranges, which is somewhat circular without independent estimates of dispersal ability (e.g., from genetic data) (Dexter 2010). Modern population genomic methods offer a route to examining differences in dispersal ability and demography independent of geographic distribution *per se*. Although a recent study on spiders showed that species with high abundance and generalized ecologies can persist for millions of years after colonization (Gillespie et al. 2017), this prediction has not been tested directly in ants.

A related question is whether lineages evolve to acquire a consistent set of morphological changes that are expected to be associated with postcolonization evolution—the evolution of a morphological “island syndrome” of traits (Adler and Levins 1994; Novosolov et al. 2013; Burns 2019). An alternative is adaptive radiation, which is the diversification of lineages that take advantage of ecological opportunities (Schluter 2000). This can fill morphospace occupied by continental groups, and in some cases exceeding it. For example, rather than evolve toward a consistent set of traits, Fijian *Pheidole* have evolved to fill much of the global morphospace (Darwell et al. 2020) including the evolution of specialized traits such as extreme spinescence (Sarnat et al. 2017).

Finally, there is a question of whether after a lineage establishes on an island, the new arrivals can invade and penetrate the island's interior, eventually replacing the original inhabi-

tants. Thus, we could see evidence of repeated colonization, with species derived from earlier colonizations more specialized and less abundant, a key prediction of the taxon cycle. One alternative to this would be a strong priority effect associated with ecological release. Ecological release is the expansion of species' released niche when it arrives in a new environment with less competitors, and has been considered as an important process to shape community assembly of island fauna such as birds, lizards, spiders, and snails (Losos et al. 1998; Chiba 2004; Gillespie 2004; Reding et al. 2009). The first colonizing lineage seizes ecological opportunity and undergoes niche shift, radiation, and evolutionary community assembly—after which the community is resistant to subsequent colonists (Vannette and Fukami 2014; Fukami 2015). New arrivals may colonize the lowland disturbed habitats or deposit a lineage on the island but never manage to penetrate and usurp the existing community that has filled a diverse set of niches.

Here, we examine these dynamics using a combination of field inventory, phylogenomics, population genomics, X-ray imaging, linear and 3D geometric morphometrics to unravel the assembly of a community of *Strumigenys* miniature trap-jaw ants in Fiji, where it is the most speciose ant genus. The hypothesis that long-distance ant dispersal is habitat dependent is best addressed on a regional or continental scale and has been tested for other ant groups in the region (Economo et al. 2015; Matos-Maraví et al. 2018a, Matos-Maraví et al. 2018b), and is beyond the scope of this study. We focus instead on the other themes listed above using a combined phylogenomic and population genomic analysis.

Specifically, we (i) use phylogenomics to test whether the Fijian *Strumigenys* community evolved primarily *in situ* within the archipelago or through dispersal assembly, (ii) use phenomic methods to test whether ecomorphological changes are consistent with evolution of an island syndrome of traits, or adaptive radiation into a broad range of ecomorphologies. Furthermore, we use population genomic approach to (iii) test whether niche shifts into interior and upland habitats are associated with an increase in geographic population structure, an indication of a decline in dispersal ability and connectivity, and (iv) we use demographic inference to test whether endemics are undergoing more demographic decline relative to newer arrivals, and whether evolution into more upland habitats and more specialized niches is associated with demographic decline. Finally, we examine (v) whether repeated colonizations lead to “takeovers” of the local community, would come in the form that multiple colonizations have occurred, and that in more than one colonization we see niche shift and ecomorphological radiation. If priority effects are strong, we would see most ecomorphological diversification descended from the initial colonizing lineage, with no evidence for niche shift and cladogenesis of more recent colonizations.

## Material and Methods

### THE STUDY SYSTEM AND TAXON SAMPLING

Many remote Pacific islands are thought to lack native ants entirely (Wilson and Taylor 1967), but Fiji supports a rich and distinctive ant fauna, including 45 genera and 188 known species, of which over 68% are endemic to Fiji (Sarnat 2006, 2008; Sarnat and Economo 2012). *Strumigenys* (Hymenoptera: Formicidae) is the third most speciose ant genus on earth with more than 1000 described species across tropical and subtropical forest (Bolton 2000), and it is also the most speciose ant genus in Fiji (23 species, with 20 endemics, Sarnat et al. 2019). *Strumigenys* is a pantropical, hyperdiverse clade of leaf-litter predators (Wilson 1953; Brown and Wilson 1959). *Strumigenys* are known to vary along several important morphological axes including body size and relative mandible length. Relative mandible length (i.e., relative to head length), is thought to vary with hunting strategy and microhabitat (Brown and Wilson 1959; Bolton 2000). Species with long mandibles tend to be more epigaeic (above-ground active), and use a powerful trap-jaw mechanism as a weapon for active hunting. In contrast, short-mandibled species tend to be more hypogaeic (underground active)—they sit and wait until prey comes within close proximity of the mandibles, sometimes using chemical lures, then grip and hold onto their prey item until they can sting and immobilize it (Wilson 1953; Deyrup and Cover 2009). In a global revision of the genus, Bolton (2000) assigned Fijian species to six different morphological species groups, all of which are widespread in the Indo-Pacific. These species groups provide some a priori expectations about community assembly of the archipelago: if morphological species groups are monophyletic, this would imply that the archipelago has been colonized a minimum of six times. Thus, dispersal would be a key mechanism assembling morphological diversity on the archipelago. To put the Fijian *Strumigenys* in phylogenetic context, we sampled 42 *Strumigenys* species (387 specimens in total; see Supporting information Table S1 for details), including 17 from Fiji and 25 non-Fijian outgroups. We have another ongoing effort to reconstruct the global phylogeny of the genus with a dataset of 462 species representing all main geographic regions, thus, we chose these outgroups to be both representatives of global diversity and include closest relatives of the Fijian fauna on our broader phylogeny. Unfortunately, six rare Fijian species were not able to be included in the molecular study due to the lack of available material. However, we sequenced representative species from all the morphological groups in Fiji (Sarnat et al. 2019), and the missing species are closely allied with those taxa that were included. Thus, while we cannot completely rule out that these species represent distant lineages or independent colonizations of the island, we view it as highly unlikely.

### SEQUENCING, RAD ASSEMBLY, AND GENOTYPING

The genomic DNA of each specimen was extracted using a non-destructive method following Tin et al. (2014). RAD library preparation was performed as in Tin et al. (2015) by using a Biomek FXP Laboratory Automation Workstation (Beckman Coulter). Equimolar concentrations of libraries with different barcodes were pooled, and a gel extraction was performed to select 200–400 bp DNA. Finally, the libraries were sequenced single end with read length of 55 bp on an Illumina HiSeq 2500 platform in DNA Sequencing Section (SQC) at the Okinawa Institute of Science and Technology Graduate University. Samples were demultiplexed, separated by individual, and filtered by quality using Trimmomatic (Bolger et al. 2014).

To assemble the dataset for phylogenomic analysis, we first assembled a dataset of a maximum of 10 specimens per species (the number of specimens range from 1 to 10, see Supporting information Table S2 for detail), by selecting the specimens with the highest data coverage after demultiplexing. We then *de novo* assembled the loci from raw RAD data using ipyrad (Eaton and Overcast 2018) pipeline. We largely followed the default setting for the assembling parameters, except we deleted the parameter 8 (“restriction\_overhang”) in the parameter file since our samples were already demultiplexed. More specifically, we first filtered the reads with more than five ambiguous sites (Phred quality score <20). We then clustered the filtered reads within each sample using 85% sequence similarity. After the consensus sequences were called within each sample, we removed the potential paralogs by filtering out the consensus loci with more than two alleles. Finally, we clustered the loci across samples at 85% similarity and included all loci shared by at least four samples. The final assembled loci were exported in ipyrad formats \*.loci (see ipyrad document for details). Because the 3’ edge of loci were not well aligned and might introduce false SNP calling during the ipyrad assembly, we trimmed the last 5 bp of each final aligned locus from the \*.loci file, and then concatenated all loci into one supermatrix using custom python script.

To assemble datasets for population genomics analyses, we first selected eight Fijian *Strumigenys* species with enough specimens (at least three specimens from the same geographic population) sampled across the Fiji archipelago (two non-endemic species, including one Pacific-widespread native species *Strumigenys godeffroyi*, and one exotic species *Strumigenys rogeri*, and six Fijian endemic species: *Strumigenys trauma*, *Strumigenys basiliska*, *Strumigenys chernovi*, *Strumigenys ekasura*, *Strumigenys nidifex*, and *Strumigenys sulcata*; Supporting information Table S3 to S10). We then applied separate ipyrad *de novo* assembly analyses on each species for genotyping (the minimum locus coverage across specimens = 70%). After assembly, we used VCFTools version 0.1.14, (Danecek et al. 2011) to remove individuals with average loci coverage <70%. SNPs with

minimum minor allele frequency (MAF < 0.05) were also filtered out. Finally, for the downstream population structure inferences, we randomly selected one SNP per locus to reduce the effect of linkage disequilibrium.

### PHYLOGENOMIC ANALYSIS

We included loci that had a high percentage of missing data across specimens, as previous work on RAD-seq phylogenomics showed that loci missing across many or even most taxa can collectively contain a great deal of information about internal nodes in the phylogeny (Eaton et al. 2017). Our own informal testing on this and other datasets support this conclusion. Thus, we included even loci with low coverage across specimens. The final concatenated matrix for the phylogenomic analysis contained 330 413 loci and 13 993 656 bps with average 2.8 million bps present on the specimen level and 5.6 million bps presented per species (calculated from a consensus sequence within each species). To infer the history and the origins of Fijian *Strumigenys*, we reconstructed a maximum likelihood phylogeny in ExaML version 3.0.17 (Kozlov et al. 2015). All the starting trees were generated using RAxML version 8.2 (Stamatakis 2014), and we used a general GTR substitution model and a gamma distribution (GTR + G) of among site rate variation as selected by PartitionFinder 2 (Lanfear et al. 2017). We estimated the topology support by generating 100 bootstrap replicates using RAxML and then using ExaML to infer one ML tree per replicate.

We also inferred an SVDquartets based species tree on Fijian *Strumigenys* using tetrad version 0.7.20, a program that is implemented in ipyrad (Chifman and Kubatko 2014; Eaton et al. 2017). We ran tetrad on the same assembled dataset that include 330, 288 unlinked SNPs. We inferred all 19 720 001 possible quartets for the 41 taxa, and then conducted 100 nonparametric bootstraps replicates to assess the support.

We estimated the divergence dates of Fijian endemic *Strumigenys* using BEAST version 2.4.4 (Bouckaert et al. 2014) with molecular evolution model set to GTR + G as suggested by PartitionFinder 2. To select the most appropriate clock model for our data, we applied the stepping-stone sampling method implemented in BEAST version 2.4.4 to test whether the evolutionary rate of the taxa in our dataset is consistent (strict clock model vs. relaxed model). The result strongly suggests the relaxed model for our data (mean marginal likelihood: relaxed log normal model = -271 661.46, and strict model = -273 532.38). We then used the same stepping-stone sampling on the two tree priors and selected Yule model as our tree prior (mean marginal likelihood: Yule = -271 661.46, Birth-Death model = -272 948.05). We conducted the stepping-stone sampling analyses with 50 steps and 200 000 generations within each step. The posterior distributions were sampled every 1000 generations and the convergence was assessed by examining the estimated marginal log likelihood

values. For data calibration, we used the root divergence time of *Strumigenys* from Ward et al. 2015 as the minimum and maximum age constraint in our uniform distribution. We fixed the tree topology by using the phylogeny obtained from ExaML as the starting tree. We conducted two independent runs for  $1 \times 10^8$  generations each, sampling every 10 000 generations. We assessed the convergence by examining whether the ESS of all parameters were greater than 200 in Tracer version 1.6 (Drummond and Rambaut 2007). We generated the maximum credibility clades trees using TreeAnnotator with the first 10% of posterior trees discarded as burnin (with burnin determined by the trace).

### MORPHOMETRICS ANALYSES

We used both linear morphometrics and 3D geometric morphometrics to quantify the ecomorphological diversification of Fijian *Strumigenys*. We provide an overview here, but detailed methods can be found in Supporting information Appendix S1. The linear morphometrics were based on a series of measurements across the ant body, including head length, head width, scape length, eye length, Weber's length, and pronotum height following Bolton (2000), for each of the 14 Fijian *Strumigenys* species with total 281 specimens. To compare the level of morphological divergence in Fijian *Strumigenys* to that of the genus as a whole, we assembled a dataset of morphological measurements for 1056 non-Fijian *Strumigenys* species (mainly using Bolton (2000) but adding our own measurements for some species, detail can be found in the Supporting information Appendix S1), and used it to characterize a global morphospace.

To quantify morphological shape variation in 3D using geometric morphometrics, we scanned 14 *Strumigenys* species using X-ray microcomputed tomography (X-ray micro-CT) and applied a system of landmarks to the head and mesosoma (Supporting information Appendix S1) which were analyzed with the package *geomorph*. We estimated a phylomorphospace for both linear and 3D geometric morphometrics datatypes, and used *phylomorphospace* function in the R package *phytools* (Revell 2012) to evaluate the diversification of Fijian *Strumigenys* in morphospace. We reconstructed ancestral states for body size and elevational affinity of Fijian *Strumigenys* by using *fastAnc* function in the R package *phytools* (Revell 2012).

### POPULATION GENOMICS ANALYSES

To test whether species decline in abundance and dispersal ability after colonization, we examined the degree of geographic population structure and the population demography. Specifically, we applied a population genomics approach to the eight *Strumigenys* species with sufficient sampling for analysis. These species include both nonendemic species and those from different clades within the Fijian endemics.

### Population structure inference

We used three approaches to study the population structure of the eight *Strumigenys* species to assess the degree of genetic clustering of each species across different islands. We first examined genetic structure by conducting PCA on SNP data using the Python package *scikit-allele* version 1.2.0 (Miles and Harding 2016). Second, we used sNMF version 1.2 (Frichot et al. 2014) to test the most likely number of genetic clusters within each species ( $k$ ) and assign individuals to populations. We tested each  $k$  value (range from 1 to 10) with 20 replicated runs, and then examined their cross-entropy criterion of each  $k$ . We visualized the sNMF results in R and determined the optimal  $k$  as the  $k$  value that minimizing the cross-entropy criterion. Third, we used the Neighbor-Net algorithm (Bryant and Moulton 2004) implemented in the program SplitsTree version 4.14.4 (Huson and Bryant 2006) to visualize population structure by generating phylogenetic networks. Genetic differentiation of populations in each species ( $F_{ST}$ ) were estimated at both per-SNP and genome-average level using Python package *scikit-allele*. Calculation of  $F_{ST}$  requires the designation of subpopulations. We generally used specimens collected from the same island as a single subpopulation, as we did not detect any within-island structure for most species. For *S. sulcata* and *S. trauma*, specimens collected from western and eastern Viti Levu (the largest island) showed differentiation, and thus, were treated as separate subpopulations in the population structure analyses (in total, six populations for *S. basiliska*, four populations for *S. chernovi*, three populations for *S. ekasura*, five populations for *S. godeffroyi*, four populations for *S. nidifex*, four populations for *S. rogeri*, four populations for *S. sulcata*, four populations for *S. trauma* were selected; see Supporting information Appendix Table S3 to S10 for detail). We used Welch's two-sample  $t$  test to investigate whether the  $F_{ST}$  estimates between the species of the two clades were significantly different from each other.

### Population demographic analyses

To test the different historical demographic syndromes (population expansion/contraction) of Fijian *Strumigenys* populations, we analyzed one dimensional site frequency spectra (1D-SFS) using *δadi* version 1.7.0 (Gutenkunst et al. 2009). We examined the following four alternative 1D models that differ in assumptions related to historical population change: (1) constant population size model, (2) instantaneous size change, (3) exponential size change, and (4) instantaneous size decline followed by exponential growth. The populations of each species were defined the same way as calculating  $F_{ST}$  in the previous section. Parameter optimizations for each model were performed using the optimization routine procedure in Portik et al. (2017). We then used the Godambe Information Matrix (GIM, Coffman et al. 2015) to compare maximum likelihood models across the four

demographic scenarios. For the best-fit model, we estimated standard errors (SE) for each parameter using the GIM on 200 bootstrap data sets that randomly sampled from the original frequency spectrum using the built-in sampling method in *δadi*. We then calculated 95% confident intervals for each parameter estimate using the point estimate  $\pm 1.96$  SE. We focused on the ratio of historical and current population size as an indicator of demographic growth or decline.

To cross-validate the demographic results from *δadi*, we also used *fastsimcoal* version 2.6 (Excoffier et al. 2013) to simulate a simple exponential population expansion or contraction model for each species. We set the prior distribution for this model as follows: time (TG) of instantaneous population size change  $\sim$  uniform (U) (1 k, 1 million) generations ago, current effective population size (NCUR)  $\sim U$  (100, 100K), and ancient effective population size (NANC)  $\sim U$  (100, 100K). We conducted 1 million coalescent simulations of this population expansion or contraction model with the following options: -N 100 0000 (number of coalescent simulations), -L 40 [number of expectation-maximization [M] cycles], -M 0.001 (minimum relative difference in parameter values for the stopping criterion), and -c 10 (threshold for observed SFS entry count, pooling all entries with less than 10 SNPs). For each species, we performed 100 independent *fastsimcoal* runs to determine the parameter estimates at maximum likelihood (Excoffier et al. 2013).

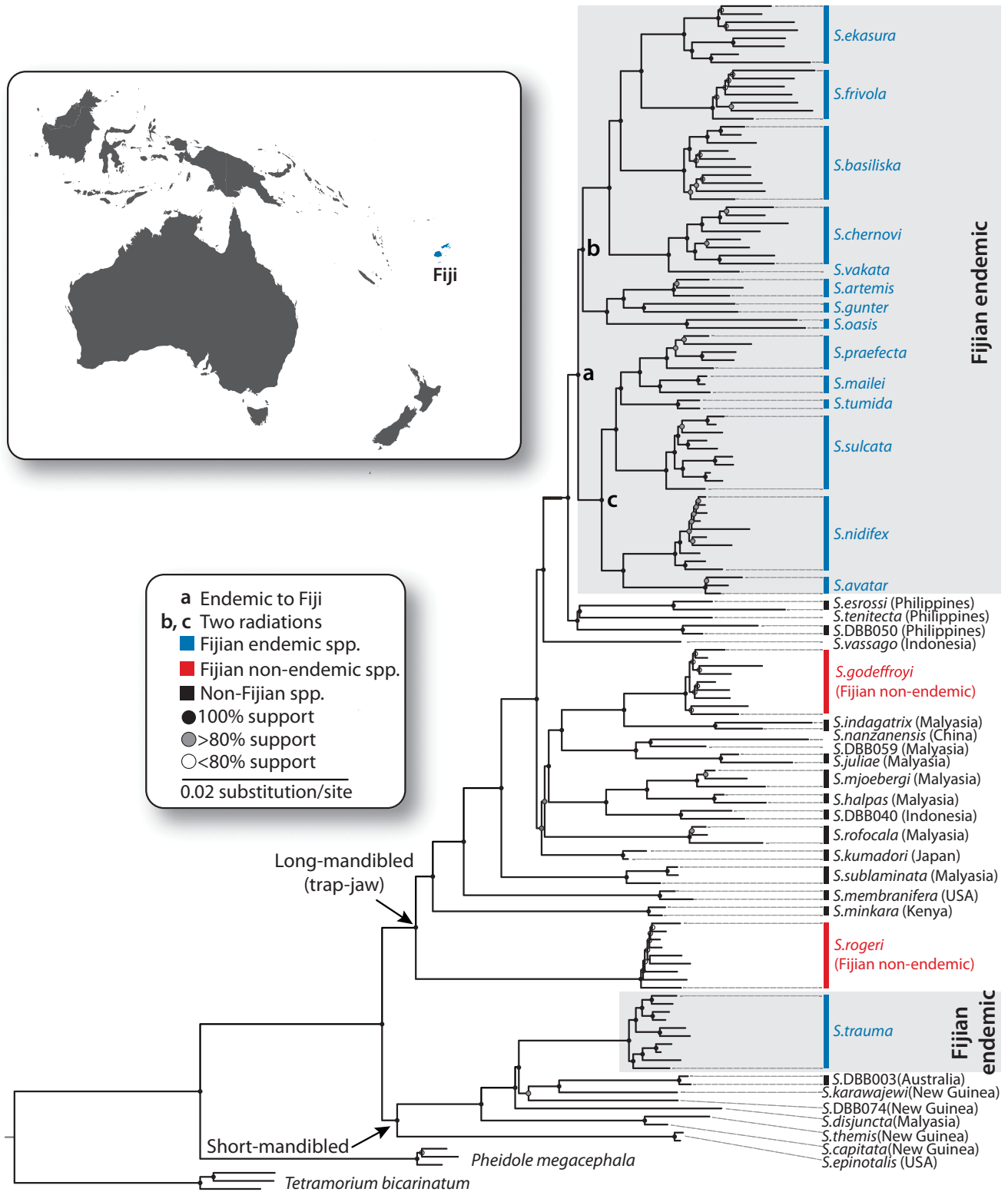
## Results

### IN SITU RADIATION OF FIJIAN STRUMIGENYS

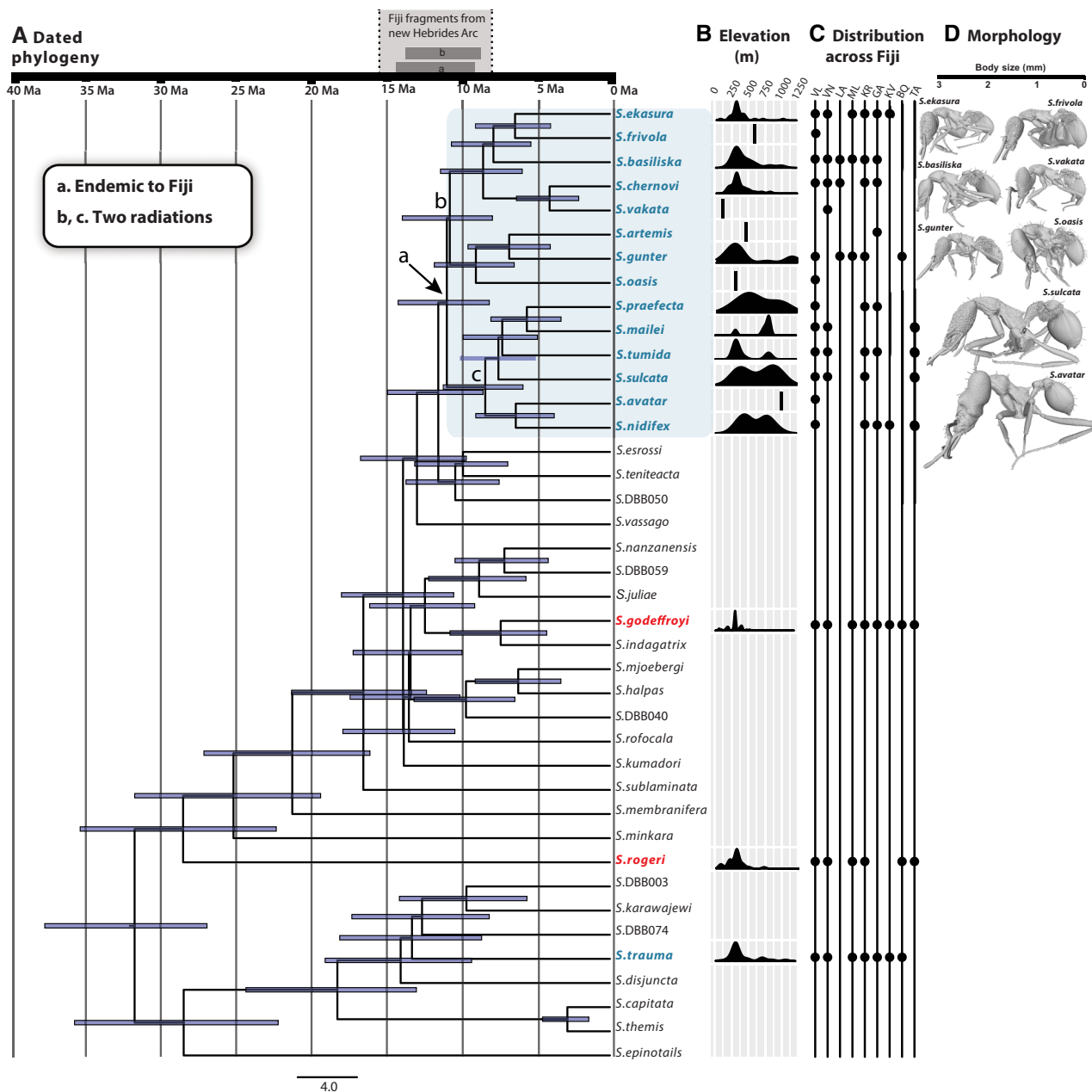
The tree topology inferred with maximum likelihood method showed strong support (bootstrap 100%) for the monophyly of a single Fijian endemic long-mandibled *Strumigenys* clade (Clade a in Fig. 1). The SVDQuartets based species tree matched the ML tree topology for all the endemic Fijian *Strumigenys* species (Supporting information Fig. S1). The monophyly indicates that the high endemism of long-mandibled *Strumigenys* in Fiji is due to *in situ* radiation of a single colonist lineage, not independent colonizations of multiple lineages. The divergence dating analysis revealed the 14 extant species of long-mandibled *Strumigenys* descended from a single lineage that colonized Fiji in the Miocene and split into two archipelago-wide radiations (clade b and clade c in Fig. 2A).

### NICHE SPECIALIZATION AND ECOMORPHOLOGICAL DIVERSIFICATION

Within the endemic radiation, some species were only found in the lowland forest (e.g., *Strumigenys ekasura*, *Strumigenys frivola*, *Strumigenys basiliska*, *Strumigenys chernovi*, *Strumigenys vakara*, *Strumigenys gunter*, and *Strumigenys oasis*), while other species were more often found in high-elevation



**Figure 1.** Maximum likelihood phylogeny of the ant genus *Strumigenys* in Fiji based on 330 413 Radseq loci. Nodes with 100% support values are represented by closed circles. Grey circles indicated the support value between 80 and 100%, while open circles indicated the nodes with less than 80% support.



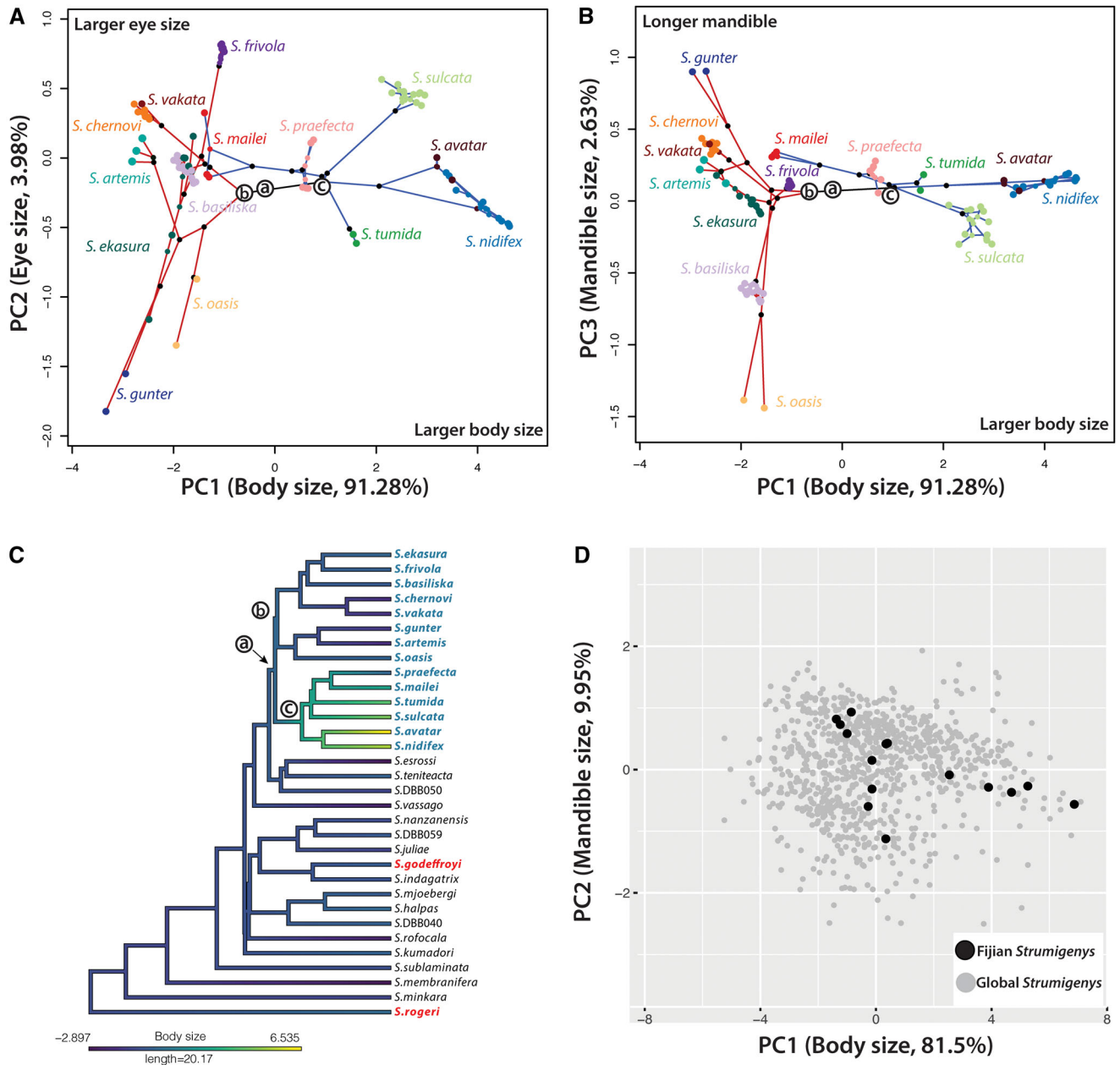
**Figure 2.** Radiation and diversification of *Strumigenys* in Fiji. (A) Dated chronogram inferred by Bayesian method based on 267 715 RAD loci showing the evolutionary radiations of *Strumigenys* in Fiji archipelago. (B) The elevation distribution (loess-smoothed) indicated that in general, the species in small size clade tend to live in low elevation, while large *Strumigenys* species were often found in low and high elevation. (C) Species distribution across the whole archipelago. VL, Viti Levu; VN, Vanua Levu; LA, Ovalau; ML, Moala; KR, Koro; GA, Gau; KV, Kadavu; BQ, Beqa; TA, Taveuni. (D) 3D-rendered models of *Strumigenys* species in the two clades to show the body size differences.

forest (e.g., *Strumigenys praefecta*, *Strumigenys mailei*, *Strumigenys tumida*, *Strumigenys sulcata*, *Strumigenys avatar*, and *Strumigenys nidifex*; Fig. 2B). Species collected at high elevations were much larger than species collected at low elevations (Fig. 2D).

The distribution of the Fijian *Strumigenys* species in 2D morphospace indicates a considerable amount of morphological divergence between the two endemic clades (Fig. 3A, B).

The first principal component (body size, variance explained = 91.3%) separated all endemic long-mandibled Fijian *Strumigenys* into two major groups: large *Strumigenys* group with positive PC1 values and small *Strumigenys* group with negative PC1 values (Fig. 3A, B). Body size divergence in *Strumigenys* reflected phylogeny, with all the species in one endemic clade exhibiting small size (“small-bodied clade”) and species in another endemic clade showing large size (“large-bodied clade”). PC2 (eye

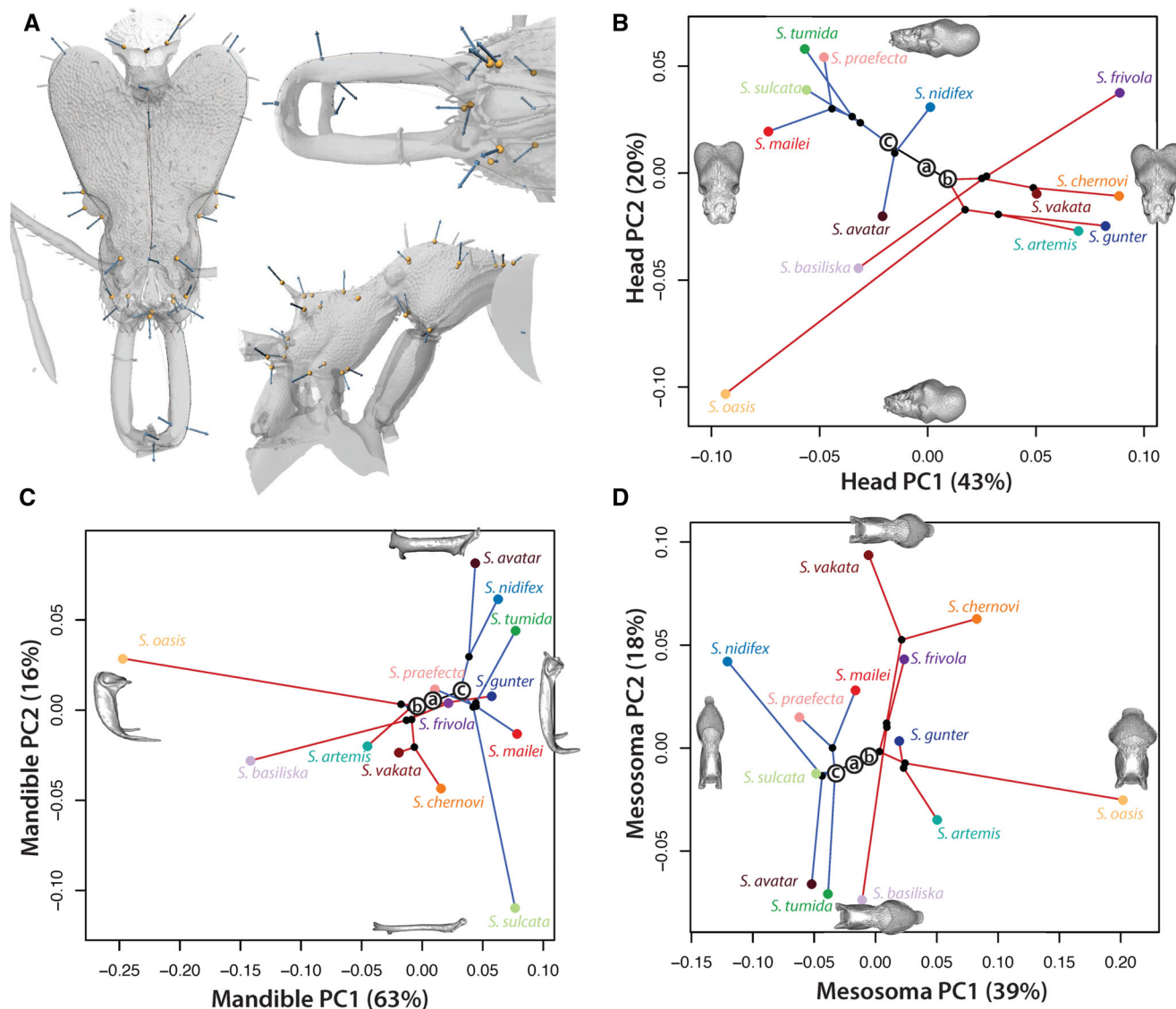




**Figure 3.** 2D-Phylomorphospace of morphological divergence in Fijian *Strumigenys* based on the morphological traits measurements. (A) PC1 (body size) versus PC2 (eye size). (B) PC1 (body size) versus PC3 (mandible length). The positive value indicates larger size. The dots in the same color indicate specimens from the same species. The red branch indicates large *Strumigenys* clade (negative PC1) and the blue branch represents the small *Strumigenys* clade (positive PC1). The key ancestral nodes are indicated using letters a, b, and c. (C) Ancestral state reconstruction of body size in long-mandibled *Strumigenys* species, showing that the larger body sized *Strumigenys* species evolve *in situ* in Fiji. (D) The Fijian species (black dots) overlaid onto global *Strumigenys* morphospace which includes 1506 non-Fijian *Strumigenys* species (grey dots).

size, variance explained = 3.98%) further separated ant species within each clade based on their eye size and other characteristics (Fig. 3A). Moreover, PC3 (mandible length, variance explained = 2.63%) revealed some variations in mandible length and other characteristics among species in the small-bodied *Strumigenys* clade, while the mandible size in the large-bodied *Stru-*

*migenys* clade was more conserved (Fig. 3B). The ancestral state reconstruction of body size showed that larger body-sized form evolved with Fiji from more typical ancestors (Fig. 3C). The results indicate that the ecomorphological diversification of Fijian endemic *Strumigenys* evolved *in situ* within the archipelago. Moreover, we found that the Fijian *Strumigenys* lineages filled

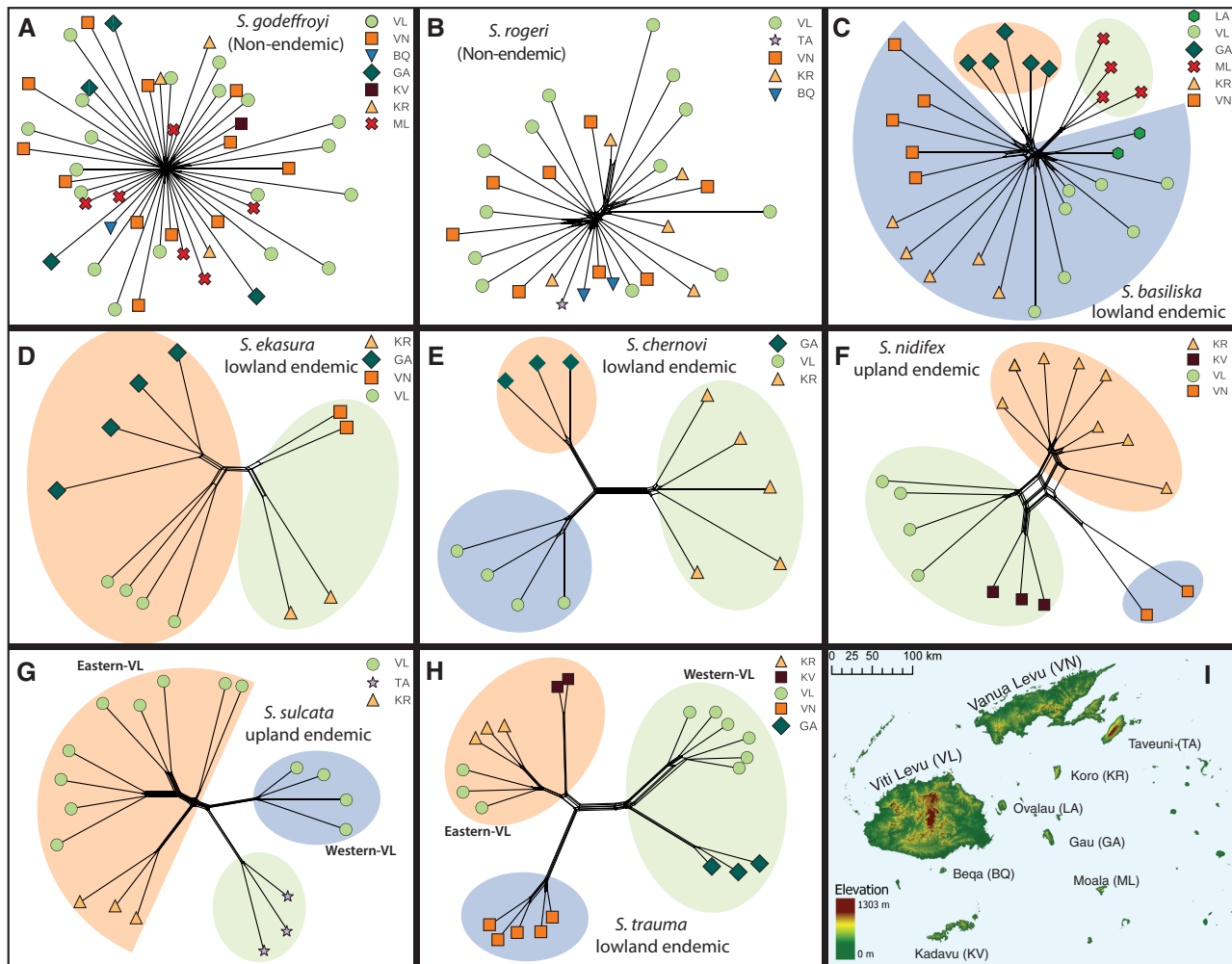


**Figure 4.** 3D geometric morphometric analysis of morphological divergence in Fijian *Strumigenys*. (A) Landmarks placement on head, mandible, and mesosoma. (B-D) Phylomorphospace of morphological divergence in head shape, mandible shape, and mesosoma shape. (B) For the head, PC1 (43% of variance) described species with a narrow anterior region of the head, especially the clypeus, and PC2 (20% of variance) described species with large eyes and a narrow posterior head. (C) The mandible varied from thick and triangular to thin and elongate (PC1; 63% of variance), with “teeth” along the same versus different axes (PC2; 16% of variance). Lastly, (D) for the mesosoma, PC1 (39% of variance) described species with a broad mesosoma and relatively enlarged pronotum, and PC2 (18% of variance) described species with a relatively enlarged mesonotum. The dots in the same color indicate specimens from the same species. The red branch indicates large *Strumigenys* clade and the blue branch represents the small *Strumigenys* clade.

a large fraction of the entire global *Strumigenys* morphospace (Fig. 3D).

In Fig. 4, 3D geometric morphometrics also revealed variation among species in head, mesosoma, and mandible shape. The small- and large-bodied *Strumigenys* clades were consistently separated in each morphospace plot. For the head, PC1 (43% of variance) described the width of the posterior head, especially the breadth of the clypeus, and PC2 (20% of variance)

described the depth of the posterior head (Fig. 4B). For the mesosoma, PC1 (39% of variance) described the relative size of the pronotum, and PC2 (18% of variance) described an apparent trade-off in overall elongation of the pronotum versus propodeum (Fig. 4C). Lastly, the mandible varied from thick and triangular to thin and elongate (PC1; 63% of variance), with “teeth” along the same versus different axes (PC2; 16% of variance) (Fig. 4D).



**Figure 5.** Neighbor-net tree of eight *Strumigenys* species in Fiji inferred in SplitsTree to characterize genetic differentiation among different islands. No clear population structure was found in the two nonendemic species (A, B). All the endemic species exhibited clear population structures (C-H). (I) The map of the Fiji archipelago. Colored nodes at the terminal of tree correspond to the sample from different islands. The colored shade indicates the genetic clusters inferred from sNMF.

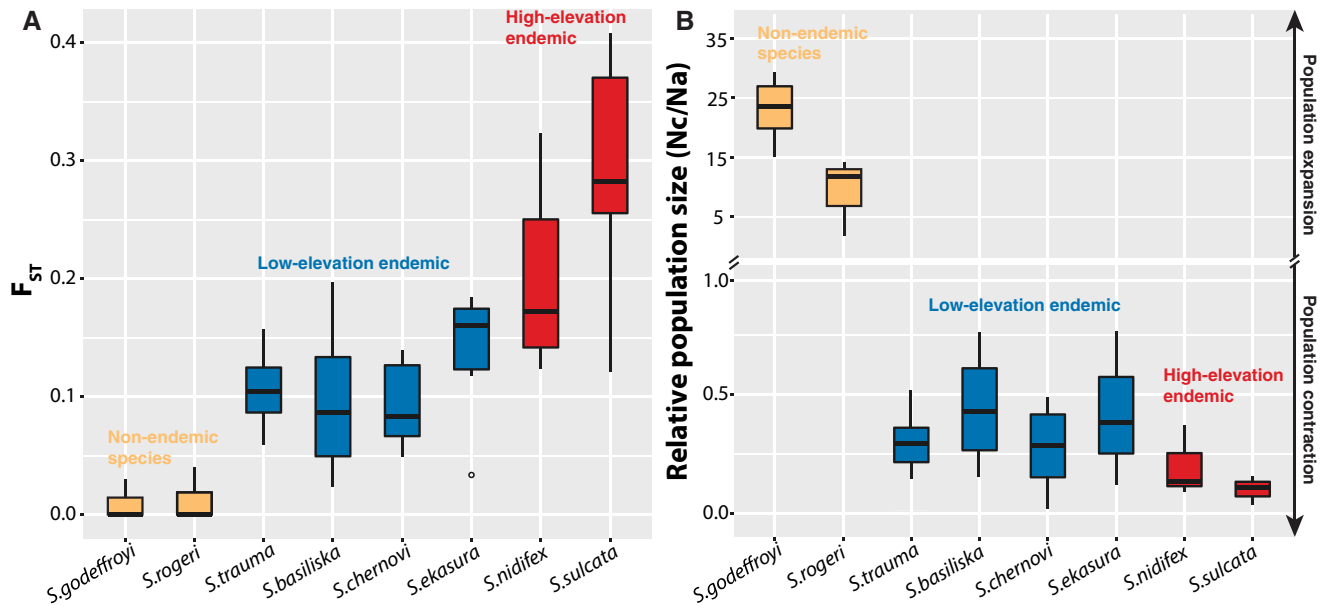
## POPULATION GENOMICS ANALYSES

### Population structure

Inferred population structures of the selected *Strumigenys* species were largely consistent across methods, with no clear population structure in the two nonendemic species and clear population structure in endemic species (Fig. 5). More specifically, there were no clear geographic clustering patterns in the PCA plot for the two nonendemic species indicating low or no within-archipelago differentiation (Supporting information Fig. S3). In contrast, PCA on SNP genotypes showed that all Fijian endemic *Strumigenys* species grouped geographically with individuals collected from the same locality (Supporting information Fig. S3). In sNMF, the best-supported  $K$  value of the two nonendemic species *S. rogeri* and *S. godeffroyi* is 1, indicating no population structure among all the specimens. The optimum  $K$

values as well as the population assignments on the six endemic species were consistent with the clustering results from the PCA (Supporting information Fig. S4). Based on the Neighbor-Net algorithm conducted on our SNP data, SplitsTree produced a tree for each species (Fig. 5) that was congruent with the genetic clusters inferred by sNMF and PCA.

The  $F_{ST}$  values among all populations of different species vary from nearly 0 to 0.3 indicating the variable levels of geographic population structure across species (Fig. 6A). For example, the  $F_{ST}$  values of *S. godeffroyi* and *S. rogeri* are very small suggesting little genetic differentiation among island populations in nonendemic species, while the  $F_{ST}$  values in *S. sulcata* are around 0.3 indicating that populations from different islands were notably divergent from each other. It is worth noting that the three species from the small-bodied clade (*S. basiliska*, *S. chernovi*,



**Figure 6.** Average  $F_{ST}$  and relative population size change of eight *Strumigenys* species in Fiji. (A) The average  $F_{ST}$  for pairwise comparisons of all populations from different islands for each species. (B) The relative population size change of all populations for each species inferred from the best demographic model in *dadi*. Relative population size is represented by the ratio of current population size ( $N_c$ ) to ancestral population size ( $N_a$ ). The box encloses the 25–75th percentiles of the values, the whisker extends to 1.5 times the interquartile range.

and *S. ekasura*) showed significantly lower genetic differentiation compared to the two species from the large-bodied clade (*S. nidifex* and *S. sulcata*,  $P < 0.001$ , Welch's two-sample  $t$  test).

#### Population demographic history

The best demographic models inferred by *δadi* indicate dramatic population expansion in the two nonendemic species with their population size increasing 22 and 10 times instantaneously after colonization (*S. godeffroyi* and *S. rogeri*, respectively, Supporting information Table S12, Fig. 6B). On the contrary, we detected exponential population contraction for all the endemic species with an average population decline of 0.25 times to their ancestral population size,  $N_a$  (Supporting information Table S12, Fig. 6B). The population contraction of the one endemic species outside of the main radiation (*S. trauma*) was not significant (confidence interval including 0, Supporting information Table S12). Among the five other endemic species included in the analysis, the decline of population size in upland endemics (*S. nidifex*, and *S. sulcata*) was greater compared to that of the lowland endemic species (*S. basiliska*, *S. ekasura*, and *S. chernovi*) (0.15  $N_a$  compared to 0.36  $N_a$ ; Fig. 6B, Supporting information Fig. S5).

Our fastsimcoal2 analysis produced similar results as the *δadi* analysis: population contraction in all six endemic species, and population expansion in the two nonendemic species. Detailed results can be found in Supporting information Table S13.

## Discussion

Understanding the processes assembling island biota has long been a fascination of ecological and evolutionary science. Modern methods of phylogenomics, geometric morphometrics, and population genomics applied to communities of species offer powerful new tools to test ideas about community assembly (Andújar et al. 2015; Sarnat et al. 2017; Cotoras et al. 2018; Maestri et al. 2018). Our multifaceted analyses found that the ecological and evolutionary assembly of Fijian *Strumigenys* community is partially consistent with a priori expectations based on island biogeography theory, and existing ideas in the system such as the taxon cycle.

#### COLONIZATION AND ADAPTIVE RADIATION IN FIJI

Our phylogenomic analysis of the Fijian *Strumigenys* reveals that all the endemic long-mandibled species are derived from a single colonization from Asia 9–14 Ma followed by *in situ* cladogenesis. The colonization date (9–14 Ma) is also consistent with other studies of Fijian ant radiations (Lucky and Sarnat 2010; Sarnat and Moreau 2011). This was in contrast to the a priori expectation based on the fact that long-mandibled species belong to different morphological species groups present in the Indo-Pacific region. The only other endemic species, *S. trauma*, belongs to a widespread short-mandibled group spread across the Indo-Pacific.

Within the *in situ* radiation of Fijian *Strumigenys*, we found evidence of ecological niche diversification, with one endemic clade found in lower-elevation habitats and the other found primarily in higher-elevation habitats. However, because these two sister clades are derived from the same colonization event, it is difficult to determine the direction of niche shifts and reconstruct the ecological status of the original colonist. Ancestral state reconstruction inferred an intermediate ancestral elevation, although models of continuous trait evolution inherently assume evolution is undirected so ancestors are typically inferred to be within the variation of extant taxa (Supporting information Fig. S2). A dynamic, such as the taxon cycle, whereby all lineages shift in the same direction away from an ancestor will result in misleading inferences. So while we can reject dispersal assembly as a mechanism of community assembly of ecomorphological variation, it is clear that not all species shift into more highland/interior as predicted by the taxon cycle, rather there is diversification in elevational affinity.

In total, the morphological analysis is consistent with an adaptive radiation of *Strumigenys* in Fiji, rather than an evolution trend toward specific island syndromes. The phenotypic diversification was dramatic, with a relatively small number of Fijian species filling much of the global morphospace (Fig. 3D). The species in the clade associated with upland habitat have undergone a marked increase in body size relative to their ancestors (Fig. 3C), and *S. nidifex* is among the largest *Strumigenys* species in the world. In addition to body size divergence, the 3D geometric morphometric analysis also indicates morphological divergence in head, mandible, and mesosoma shapes among species and between those two clades (Fig. 4). Relative mandible size is notable as an important ecological trait correlated with more epigeic or hypogeic lifestyles (Wilson 1953; Brown and Wilson 1959). It general is highly conserved among species groups (Bolton 2000), and clades (D. Booher, unpubl data). Thus, the rapid shortening in mandible size and shift to hypogeic lifestyle is a remarkable change within this small clade, and evidence for ecological opportunity promoting ecomorphological diversification after colonization.

#### DECLINES IN DISPERSAL ABILITY AND POPULATION SIZE

Our population genomic analysis largely supports the prediction that lineages show reduced dispersal ability and undergo demographic decline as they become affiliated with interior and higher-elevation habitats (Wilson 1959, 1961). First, species from the upland clade both show greater genetic differentiation among their geographic subpopulations compared to the species from the lowland. For example, the average pairwise  $F_{ST}$  in *S. sulcata* is about 0.3, while the average pairwise  $F_{ST}$  in *S. basiliska* is about 0.1. This suggests that the upland species have reduced in-

terisland dispersal ability and cannot maintain gene flow between their geographic populations. Moreover, the upland species also showed stronger population contraction compared to the lowland species. The strong link between morphological and ecological niche specialization—together with the decline in dispersal ability and population growth—supports the later phase of taxon cycles which suggests the shift requires adaptation and reduces commonness (Economato and Sarnat 2012; Economato et al. 2015). Future studies are needed to identify the morphological and geographic mechanisms behind this reduction of dispersal ability.

In contrast, the two nonendemic species showed very low genetic differentiation and high population growth. Both species are widely distributed across Southeast Asia and Oceania, and their strong dispersal ability should permit frequent gene flow among island populations. This is in part because in the lowland habitats they inhabit and likely to have a high connectivity, facilitating the oceanic dispersal among islands and reducing the level of genetic differentiation (Economato and Sarnat 2012; Economato et al. 2015).

#### ECOLOGICAL RELEASE AND THE ROLE OF PRIORITY EFFECTS

We examined whether there is any evidence that later arrivals are competitively superior and usurp the early colonist lineages, the key component of the taxon cycle (Wilson 1959, 1961). This prediction would have been supported if we observed multiple independent colonization origins of Fijian endemic *Strumigenys* lineages with ecomorphological radiations. However, our results did not support this prediction since ecomorphological divergence of most Fijian endemic *Strumigenys* were descended from the initial colonization. On the contrary, the postcolonization ecomorphological diversification may suggest an important role of ecological release and priority effect in shaping community assembly of *Strumigenys* in Fiji.

Our phylogenomic analysis of Fijian *Strumigenys* revealed that larger body size of Fijian endemic *Strumigenys* ants resulted from the ecological release of its ancestor upon colonizing the archipelago. When the ancestral *Strumigenys* lineage arrived in the Fiji, it quickly expanded its range and ecological niche. Some descendent lineages evolved larger body size as a result of ecological release, enabling them to catch larger prey that was previously inaccessible expand their ecological dimensions (e.g., reaching higher elevation). Moreover, we also observed divergence of relative eye and mandible size as well as variations among head, mandible, and mesosoma shape in the Fijian *Strumigenys*, suggesting they have filled multiple available microhabitats (niches). For example, species with small eye size, such as *S. oasis*, are typically subterranean ants that live underground. This postcolonization ecomorphological radiation in the context of ecological release can produce a strong positive feedback that promotes evolution-mediated priority effects: the radiation and

evolution of early arrivals has strong influence on the community assembly (Vannette and Fukami 2014; Fukami 2015; De Meester et al. 2016).

It is worth noting that another potential reason why we did not find multiple radiations of Fijian *Strumigenys* could be because the colonization event was so rare since the degree of evolution-mediated priority effect largely depends on the race between evolution of initial colonists and the immigration of preadapted species (De Meester et al. 2016). For example, thanks to human-mediated invasions, the two nonendemic *Strumigenys* species are experiencing significant population expansion across the whole archipelago. It is unclear whether the nonendemic species represent the vanguard of new radiations.

## Conclusions

Modern methods in genomics, imaging, and computation are finally allowing us to gain traction on testing ideas that have been around for decades. Using multiple lines of investigation, this study advances our knowledge of community assembly by unraveling the evolutionary history of Fijian *Strumigenys* ants. We find that the remote island community was primarily assembled through *in situ* diversification rather than dispersal assembly. The ecomorphological diversification was intense, filling much of the global morphospace and different ecological and elevational niches on the island. These niche shifts were also associated with loss of dispersal ability and demographic decline. However, although there is evidence of niche shifts, it is not clear whether they were unidirectional toward upland habitats or occurring in different directions as species diversified. It is clear that even old lineages can remain associated with lower elevation habitats even as others trend upwards, thus, there is not a single pathway of changes that all species follow. Overall, our findings for the Fijian *Strumigenys* echoes in large part patterns observed in the second most species-rich genus in Fiji, *Pheidole* (Sarnat and Moreau 2011; Economo and Sarnat 2012; Darwell et al. 2020), and only partially support the presence of taxon cycles. It remains to be seen whether these cases reflect general patterns across the Fijian and broader Indo-Pacific ant faunas, but the integration of phylogenomic, phenomic, and population genomic tools offers a powerful approach to evaluating longstanding ideas in ecology and evolution.

## AUTHOR CONTRIBUTIONS

CL, EPE, and ASM conceived of the study. CL, EMS, EPE, and DB performed the specimen work. ASM performed the DNA sequencing, CL and FHG performed the CT scanning, NRF and CL performed the morphometrics analysis, CL and CD analyzed the molecular data. CL, EPE, ASM, and YK interpreted the data. CL and EPE wrote the article, with input from all coauthors.

## ACKNOWLEDGMENTS

We wish to thank the Okinawa Institute of Science and Technology Graduate University (OIST) DNA Sequencing Section, Scientific Computing and Support Section, and Imaging Section for assistance with sequencing, HPC, and accessing the microCT scanner, respectively. We thank Issac Overcast for the suggestions on running ipyrad pipeline. We thank Mandy Tin, Jo Ann Tan, Julia Janicki, John Deyrup, Kenneth Dudley, and Masako Ogasawara for assisting in different aspects of the research. We thank Neal Evenhuis, Dan Bickel, Akanisi Caganitoba, Dave Olson, Sunil Prasad, and many Fijian landowners and local experts for their roles in the NSF Fiji Terrestrial Arthropod Survey project which collected many of the specimens used in this study. We also thank Richard Corlett and Nate Sanders for their comments on an early version of this manuscript. We appreciate the valuable comments from the Editor and two anonymous reviewers that improved the manuscript. This work was supported by subsidy funding to OIST, and JSPS Kakenhi grants (No. 17K15180 to E. P. Economo, No. 17K15178 to N. R. Friedman, No. 18K14768 to F. H. Garcia, No. 16J00372 to C. Liu). E. P. Economo was additionally funded by a grant from the Japan Ministry of Environment (Environment Research and Technology Development Fund no. 4-1904).

## DATA ARCHIVING

All the sequence data have been submitted to DNA Data Bank of Japan (DDBJ) under the bioproject PRJDB9763. The Dryad doi for our data is <https://doi.org/10.5061/dryad.k3j9kd54m>.

## LITERATURE CITED

- Adler, G. H., and R. Levins. 1994. The island syndrome in rodent populations. *Q. Rev. Biol.* 69:473–489.
- Andújar, C., P. Arribas, F. Ruzicka, A. Crampton-Platt, M. J. T. N. Timmermans, and A. P. Vogler. 2015. Phylogenetic community ecology of soil biodiversity using mitochondrial metagenomics. *Mol. Ecol.* 24:3603–3617.
- Balke, M., G. Wewalka, Y. Alarie, and I. Ribera. 2007. Molecular phylogeny of pacific island colymbetinae: radiation of New Caledonian and Fijian species (*Coleoptera, Dytiscidae*). *Zool. Scr.* 36:173–200.
- Bolger, A. M., M. Lohse, and B. Usadel. 2014. Trimmomatic: a flexible trimmer for Illumina sequence data. *Bioinformatics* 30:2114–2120.
- Bolton, B. 2000. The ant tribe Dacetini. American Entomological Institute, Gainesville, FL.
- Bouckaert, R., J. Heled, D. Kühnert, T. Vaughan, C. H. Wu, D. Xie, M. A. Suchard, A. Rambaut, and A. J. Drummond. 2014. BEAST 2: a software platform for Bayesian evolutionary analysis. *PLoS Comput. Biol.* 10:e1003537.
- Brown, W. L., and E. O. Wilson. 1959. The evolution of the Dacetine ants. *Q. Rev. Biol.* 34:278–294.
- Bryant, D., and V. Moulton. 2004. Neighbor-net: an agglomerative method for the construction of phylogenetic networks. *Mol. Biol. Evol.* 21:255–265.
- Burns, K. C. 2019. Evolution in isolation: the search for an island syndrome in plants. Cambridge Univ. Press, Cambridge, U.K.
- Carlquist, S. 1967. The biota of long-distance dispersal. V. plant dispersal to Pacific islands. *Bull. Torrey Bot. Club* 94:129–162.
- Chiba, S. 2004. Ecological and morphological patterns in communities of land snails of the genus *Mandarina* from the Bonin islands. *J. Evol. Biol.* 17:131–143.
- Chifman, J., and L. Kubatko. 2014. Quartet inference from SNP data under the coalescent model. *Bioinformatics* 30:3317–3324.
- Clouse, R. M., M. Janda, B. Blanchard, P. Sharma, B. D. Hoffmann, A. N. Andersen, J. E. Czekanski-Moir, P. Krushelnicky, C. Rabeling,

- E. O. Wilson, et al. 2015. Molecular phylogeny of Indo-Pacific carpenter ants (*Hymenoptera: Formicidae, Camponotus*) reveals waves of dispersal and colonization from diverse source areas. *Cladistics* 31: 424–437.
- Coffman, A. J., R. N. Gutenkunst, P. H. Hsieh, and S. Gravel. 2015. Computationally efficient composite likelihood statistics for demographic inference. *Mol. Biol. Evol.* 33:591–593.
- Cook, B. D., C. M. Pringle, and J. M. Hughes. 2008. Molecular evidence for sequential colonization and taxon cycling in freshwater decapod shrimps on a Caribbean island. *Mol. Ecol.* 17:1066–1075.
- Cotoras, D. D., K. Bi, M. S. Brewer, D. R. Lindberg, S. Prost, and R. G. Gillespie. 2018. Co-occurrence of ecologically similar species of Hawaiian spiders reveals critical early phase of adaptive radiation. *BMC Evol. Biol.* 18:100.
- Danecek, P., A. Auton, G. Abecasis, C. A. Albers, E. Banks, M. A. DePristo, R. E. Handsaker, G. Lunter, G. T. Marth, S. T. Sherry, et al. 2011. The variant call format and VCFtools. *Bioinformatics* 27:2156–2158.
- Darwell, C. T., G. Fischer, E. M. Sarnat, N. R. Friedman, C. Liu, G. Baiao, A. S. Mikheyev, and E. P. Economo. 2020. Genomic and phenomic analysis of island ant community assembly. *Mol. Ecol.* 00:1–17.
- De Meester, L., J. Vanoverbeke, L. J. Kilsdonk, and M. C. Urban. 2016. Evolving perspectives on monopolization and priority effects. *Trends Ecol. Evol.* 31:136–146.
- Dexter, K. G. 2010. The influence of dispersal on macroecological patterns of lesser Antillean birds. *J. Biogeogr.* 37:2137–2147.
- Deyrup, M., and S. Cover. 2009. Dacotine ants in southeastern North America (*Hymenoptera: Formicidae*). *Southeast. Nat.* 8:191–212.
- Drummond, A. J., and A. Rambaut. 2007. BEAST: Bayesian evolutionary analysis by sampling trees. *BMC Evol. Biol.* 7:214.
- Eaton, D. A. R., and I. Overcast. 2018. ipyrad: interactive assembly and analysis of RADseq data sets.
- Eaton, D. A. R., and R. H. Ree. 2013. Inferring phylogeny and introgression using RADseq data: an example from flowering plants (*Pedicularis: Orobanchaceae*). *Syst. Biol.* 62:689–706.
- Eaton, D. A. R., L. S. Elizabeth, B. Park, and M. J. Donoghue. 2017. Misconceptions on missing data in RAD-seq phylogenetics with a deep-scale example from flowering plants. *Syst. Biol.* 66:399–412.
- Economo, E. P., and E. M. Sarnat. 2012. Revisiting the ants of Melanesia and the taxon cycle: historical and human-mediated invasions of a tropical archipelago. *Am. Nat.* 180:E1–E16.
- Economo, E. P., E. M. Sarnat, M. Janda, R. Clouse, P. B. Klimov, G. Fischer, B. D. Blanchard, L. N. Ramirez, A. N. Andersen, M. Berman, et al. 2015. Breaking out of biogeographical modules: range expansion and taxon cycles in the hyperdiverse ant genus *Pheidole*. *J. Biogeogr.* 42:2289–2301.
- Excoffier, L., I. Dupanloup, E. Huerta-Sánchez, V. C. Sousa, and M. Foll. 2013. Robust demographic inference from genomic and SNP data. *PLoS Genet* 9:e1003905.
- Frichot, E., F. Mathieu, T. Trouillon, G. Bouchard, and O. François. 2014. Fast and efficient estimation of individual ancestry coefficients. *Genetics* 196:973–983.
- Fukami, T. 2015. Historical contingency in community assembly: integrating niches, species pools, and priority effects. *Annu. Rev. Ecol. Syst.* 46:1–23.
- Gillespie, R. 2004. Community assembly through adaptive radiation in Hawaiian spiders. *Science* 303:356–359.
- Gillespie, R. G. 2002. Biogeography of spiders on remote oceanic islands of the Pacific: archipelagoes as stepping stones? *J. Biogeogr.* 29:655–662.
- . 2016. Island time and the interplay between ecology and evolution in species diversification. *Evol. Appl.* 9:53–73.
- Gillespie, R. G., B. G. Baldwin, J. M. Waters, C. Fraser, R. Nikula, and G. K. Roderick. 2012. Long-distance dispersal—a framework for hypothesis testing. *Trends Ecol. Evol.* 27:47–56.
- Gillespie, R. G., M. S. Brewer, and G. K. Roderick. 2017. Ancient biogeography of generalist predators on remote oceanic islands. *J. Biogeogr.* 44:1098–1109.
- Grant, P. R., and B. R. Grant. 2002. Unpredictable evolution in a 30-year study of Darwin's finches. *Science* 296:707–711.
- Gutenkunst, R. N., R. D. Hernandez, S. H. Williamson, and C. D. Bustamante. 2009. Inferring the joint demographic history of multiple populations from multidimensional SNP frequency data. *PLoS Genet.* 5:e1000695.
- Heaney, L. 2000. Dynamic disequilibrium: a long-term, large-scale perspective on the equilibrium model of island biogeography. *Glob. Ecol. Biogeogr.* 9:59–74.
- Hubbell, S. P. 2001. The unified neutral theory of biodiversity and biogeography. Princeton Univ. Press, Princeton, NJ.
- Huson, D. H., and D. Bryant. 2006. Application of phylogenetic networks in evolutionary studies. *Mol. Biol. Evol.* 23:254–267.
- Jönsson, K. A., M. Irestedt, L. Christidis, S. M. Clegg, B. G. Holt, and J. Fjeldså. 2014. Evidence of taxon cycles in an Indo-Pacific passerine bird radiation (Aves: *Pachycephala*). *Proc. R. Soc. B* 281:20131727.
- Kozlov, A. M., A. J. Aberer, and A. Stamatakis. 2015. ExaML version 3: a tool for phylogenomic analyses on supercomputers. *Bioinformatics* 31:2577–2579.
- Lanfear, R., P. B. Frandsen, A. M. Wright, T. Senfeld, and B. Calcott. 2017. PartitionFinder 2: new methods for selecting partitioned models of evolution for molecular and morphological phylogenetic analyses. *Mol. Biol. Evol.* 34:772–773.
- Losos, J. B. 1992. A critical comparison of the taxon-cycle and character-displacement models for size evolution of *Anolis* lizards in the Lesser Antilles. *Copeia* 2:279–288.
- Losos, J. B., T. R. Jackman, A. Larson, K. Queiroz, and L. Rodríguez-Schettino. 1998. Contingency and determinism in replicated adaptive radiations of island lizards. *Science* 279:2115–2118.
- Lucky, A., and E. M. Sarnat. 2010. Biogeography and diversification of the Pacific ant genus *Lordomyrma* Emery. *J. Biogeogr.* 37:624–634.
- MacArthur, R. H., and E. O. Wilson. 1967. The theory of island biogeography. Princeton Univ. Press, Princeton, NJ.
- Maestri, R., L. R. Monteiro, R. Fornel, T. R. O.deFreitas, and B. D. Patterson. 2018. Geometric morphometrics meets metacommunity ecology: environment and lineage distribution affects spatial variation in shape. *Ecography* 41:90–100.
- Matos-Maraví, P., R. M. Clouse, E. M. Sarnat, E. P. Economo, J. S. LaPolla, M. Borovanska, C. Rabeling, J. Czekanski-Moir, F. Latumahina, E. O. Wilson, et al. 2018a. An ant genus-group (*Prenolepis*) illuminates the biogeography and drivers of insect diversification in the Indo-Pacific. *Mol. Phylogenetics Evol.* 123:16–25.
- Matos-Maraví, P., N. J. Matzke, F. J. Larabee, R. M. Clouse, W. C. Wheeler, D. M. Sorger, A. V. Suarez, and M. Janda. 2018b. Taxon cycle predictions supported by model-based inference in Indo-Pacific trap-jaw ants (*Hymenoptera: Formicidae: Odontomachus*). *Mol. Ecol.* 27: 4090–4107.
- Matzke, N. J. 2016. Trait-dependent dispersal models for phylogenetic biogeography, in the R package BioGeoBEARS. *Integr. Comp. Biol.* 56:E330.
- Miles, A., and N. Harding. 2016. scikit-allel: a Python package for exploring and analysing genetic variation data. Available from <https://github.com/cggh/scikit-allel>
- Novosolov, M., P. Raia, and S. Meiri. 2013. The island syndrome in lizards. *Glob. Ecol. Biogeogr.* 22:184–191.

- Portik, D. M., A. D. Leaché, D. Rivera, M. F. Barej, M. Burger, M. Hirschfeld, M. O. Rödel, D. C. Blackburn, and M. K. Fujita. 2017. Evaluating mechanisms of diversification in a Guineo-Congolian tropical forest frog using demographic model selection. *Mol. Ecol.* 26: 5245–5263.
- Pregill, G. K., and S. L. Olson. 1981. Zoogeography of West Indian vertebrates in relation to Pleistocene climatic cycles. *Annu. Rev. Ecol. Evol. Syst.* 12:75–98.
- Reding, D. M., J. T. Foster, H. F. James, H. D. Pratt, and R. C. Fleischer. 2009. Convergent evolution of ‘creepers’ in the Hawaiian honeycreeper radiation. *Biol. Lett.* 5:221–224.
- Revell, L. J. 2012. phytools: an R package for phylogenetic comparative biology (and other things). *Methods Ecol. Evol.* 3:217–223.
- Ricklefs, R. E., and E. Bermingham. 1999. Taxon cycles in the Lesser Antillean avifauna. *Ostrich* 70:49–59.
- . 2002. The concept of the taxon cycle in biogeography. *Glob. Ecol. Biogeogr.* 11:353–361.
- Ricklefs, R. E., and G. W. Cox. 1972. Taxon cycles in the west Indian avifauna. *Am. Nat.* 106:195–219.
- Roughgarden, J. D., and S. Pacala. 1989. Taxon cycle among *Anolis* lizard populations: review of evidence. Pp. 403–432 in D. Otte and J. A. Endler, eds. *Speciation and adaptation*. National Academy of Science, Philadelphia, PA.
- Sarnat, E. M. 2006. *Lordomyrma* (Hymenoptera: Formicidae) of the Fiji islands. *Occas. Pap. Bernice P. Bishop Mus.* 90:9–42.
- . 2008. A taxonomic revision of the *Pheidole roosevelti*-group (Hymenoptera: Formicidae) in Fiji. *Zootaxa* 1767:1–36.
- Sarnat, E. M., and E. P. Economo. 2012. Ants of Fiji. *Univ. Cal. Publ. Entomol.* 132:1–398.
- Sarnat, E. M., and C. S. Moreau. 2011. Biogeography and morphological evolution in a Pacific island ant radiation. *Mol. Ecol.* 20:114–130.
- Sarnat, E. M., N. R. Friedman, G. Fischer, B. Lecroq-Bennet, and E. P. Economo. 2017. Rise of the spiny ants: diversification, ecology and function of extreme traits in the hyperdiverse genus *Pheidole* (Hymenoptera: Formicidae). *Biol. J. Linnean Soc.* 122:514–538.
- Sarnat, E. M., F. Hita Garcia, K. Dudley, C. Liu, G. Fischer, and E. P. Economo. 2019. Ready species one: exploring the use of augmented reality to enhance systematic biology with a revision of Fijian *Strumigenys* (Hymenoptera: Formicidae). *Insect Syst. Divers.* 3: 1–43.
- Schluter, D. 2000. *The ecology of adaptive radiation*. Oxford Univ. Press, Oxford, U.K.
- Stamatakis, A. 2014. RAxML version 8: a tool for phylogenetic analysis and post-analysis of large phylogenies. *Bioinformatics* 30:1312–1313.
- Steinbauer, M. J. 2016. A generalization of the taxon cycle. *J. Biogeogr.* 44:1110–1112.
- Sukumaran, J., and L. L. Knowles. 2018. Trait-dependent biogeography: (re)integrating biology into probabilistic historical biogeographical models. *Trends Ecol. Evol.* 33:390–398.
- Sukumaran, J., E. P. Economo, and L. L. Knowles. 2015. Machine learning biogeographic processes from biotic patterns: a new trait-dependent dispersal and diversification model with model choice by simulation-trained discriminant analysis. *Syst. Biol.* 65:525–545.
- Tin, M. M. Y., E. P. Economo, and A. S. Mikheyev. 2014. Sequencing degraded DNA from non-destructively sampled museum specimens for RAD-tagging and low-coverage shotgun phylogenetics. *PLoS One* 9:e96793.
- Tin, M. M. Y., F. E. Rheindt, E. Cros, and A. S. Mikheyev. 2015. Degenerate adaptor sequences for detecting PCR duplicates in reduced representation sequencing data improve genotype calling accuracy. *Mol. Ecol. Resour.* 15:329–336.
- Vannette, R. L., and T. Fukami. 2014. Historical contingency in species interactions: towards niche-based predictions. *Ecol. Lett.* 17:115–124.
- Valente, L., A. B. Phillimore, M. Melo, B. H. Warren, S. M. Clegg, K. Havenstein, R. Tiedemann, J. C. Illera, C. Thébaud, T. Aschenbach, et al. 2020. A simple dynamic model explains the diversity of island birds worldwide. *Nature* 579:92–96.
- Ward, P. S., S. G. Brady, B. L. Fisher, and T. R. Schultz. 2015. The evolution of myrmicine ants: phylogeny and biogeography of a hyperdiverse ant clade (Hymenoptera: Formicidae). *Syst. Entomol.* 40:61–81.
- Warren, B. H., D. Simberloff, R. E. Ricklefs, R. Aguilée, F. L. Condamine, D. Gravel, H. Morlon, N. Mouquet, J. Rosindell, J. Casquet, et al. 2015. Islands as model systems in ecology and evolution: prospects fifty years after MacArthur-Wilson. *Ecol. Lett.* 18:200–217.
- Whittaker, R. J. 1998. *Island biogeography: ecology, evolution, and conservation*. Oxford Univ. Press, Oxford, U.K.
- Whittaker, R. J., J. M. Fernández-Palacios, T. J. Matthews, M. K. Borregaard, and K. A. Triantis. 2017. Island biogeography: taking the long view of nature’s laboratories. *Science* 357:1–7.
- Wilson, E. O. 1953. The ecology of some north American Dacetine ants. *Ann. Entomol. Soc. Am.* 46:479–495.
- . 1959. Adaptive shift and dispersal in a tropical ant fauna. *Evolution* 13:122–144.
- . 1961. The nature of the taxon cycle in the melanesian ant fauna. *Am. Nat.* 95:169–193.
- Wilson, E. O., and R. W. Taylor. 1967. *The ants of Polynesia* (Hymenoptera, Formicidae). Entomology Department, Bernice P. Bishop Museum, Honolulu, HI.

Associate Editor: I. Sanmartín  
 Handling Editor: M. R. Servedio

## Supporting Information

Additional supporting information may be found online in the Supporting Information section at the end of the article.

**Figure S1.** SVDQuartets based species tree of Fijian *Strumigenys* inferred by using 330,288 unlinked SNPs and 19,720,001 possible quartets.

**Figure S2.** Ancestral state reconstruction of the mean elevation in long-mandibled *Strumigenys* species.

**Figure S3.** Principal components analyses (PCA) on SNP genotypes for eight *Strumigenys* species in Fiji to characterize genetic differentiation among different islands.

**Figure S4.** Estimation of population structure of eight *Strumigenys* species in Fiji based on sNMF analysis on SNP genotype data from RADseq.

**Figure S5.** Inferred demographic model for eight *Strumigenys* species in Fiji.

**Table S1.** *Strumigenys* specimens information.

Supplementary Material