




Correction to: Association of “initial CT” findings with mortality in older patients with coronavirus disease 2019 (COVID-19)

Yan Li¹ · Zhenlu Yang¹ · Tao Ai¹ · Shandong Wu² · Liming Xia¹ 

Published online: 28 July 2020
© European Society of Radiology 2020

Correction to: European Radiology

<https://doi.org/10.1007/s00330-020-06969-5>

The original version of this article, published on 10 June 2020, unfortunately contained a mistake. The presentation of Fig. 5 was incorrect. The corrected figure is given below.

The online version of the original article can be found at <https://doi.org/10.1007/s00330-020-06969-5>

✉ Liming Xia
xialiming2017@outlook.com

¹ Department of Radiology, Tongji Hospital, Tongji Medical College, Huazhong University of Science and Technology, Wuhan 430030, Hubei, China

² Department of Radiology, Department of Biomedical Informatics, Department of Bioengineering, Intelligent Systems Program, University of Pittsburgh, Pittsburgh, PA 15213, USA

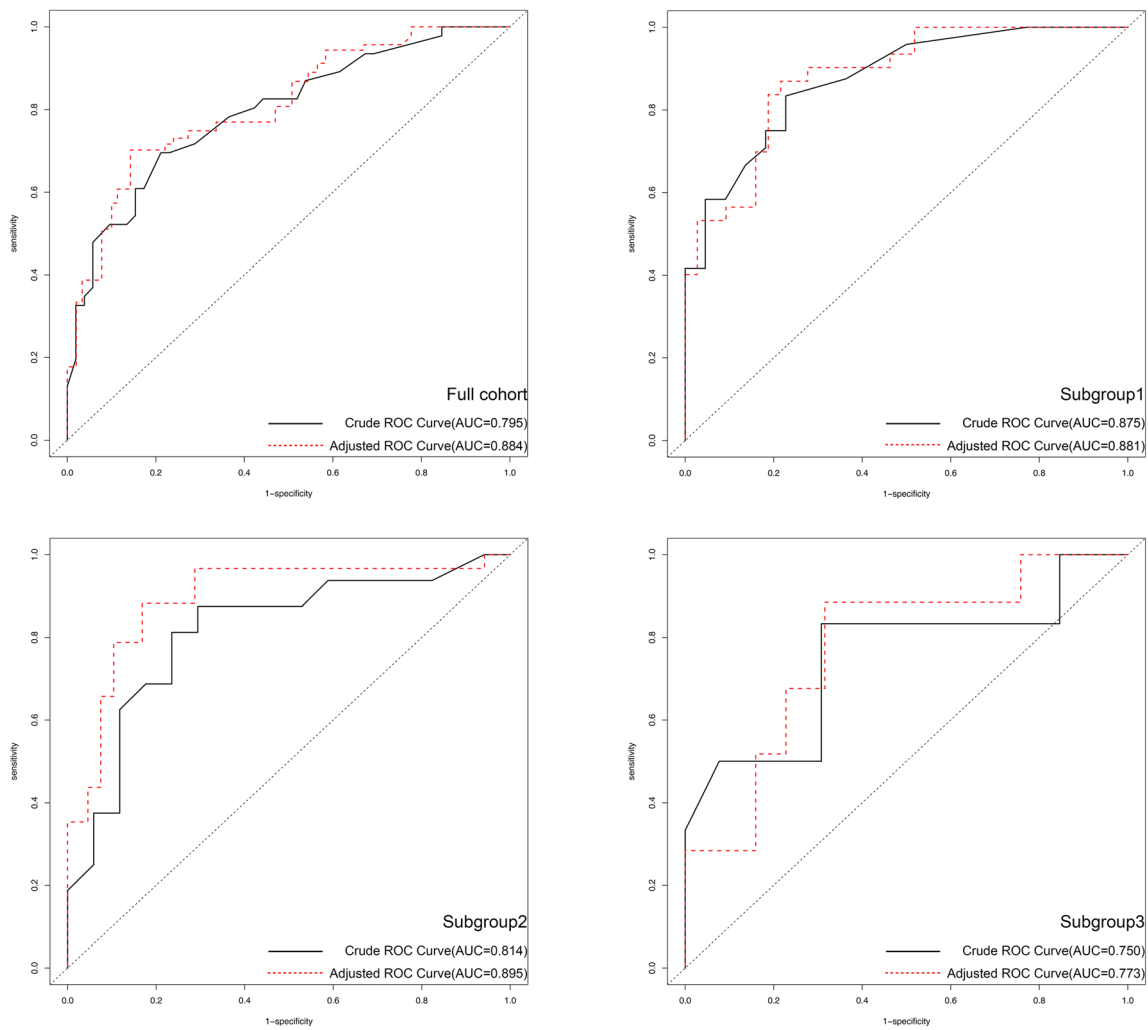


Fig. 5 ROC curve analysis of the CT scores including crude ROC curve and adjusted ROC curve after the adjustment for age and gender in the full cohort and in subgroup1, subgroup2, and subgroup3 for prediction of mortality

Publisher's note Springer Nature remains neutral with regard to jurisdictional claims in published maps and institutional affiliations.