



## In vivo safety assessment of rhodomirtone, a potent compound, from *Rhodomirtus tomentosa* leaf extract



Thanyaluck Siriyong<sup>a,b</sup>, Julalak Chorachoo Ontong<sup>b,c</sup>, Sukanlaya Leejae<sup>d</sup>, Sakol Suwalak<sup>e</sup>, Peter John Coote<sup>f</sup>, Supayang Piyawan Voravuthikunchai<sup>d,\*</sup>

<sup>a</sup> Faculty of Traditional Thai Medicine, Prince of Songkla University, Hat Yai, Songkhla 90112, Thailand

<sup>b</sup> Natural Product Research Center of Excellence, Prince of Songkla University, Hat Yai, Songkhla 90112, Thailand

<sup>c</sup> Cosmetic Technology and Dietary Supplement Products Program, Faculty of Agro and Bio Industry, Thaksin University, Ban Pa Phayom, Phatthalung, 93210, Thailand

<sup>d</sup> Excellence Research Laboratory on Natural Products, Department of Microbiology, Faculty of Science, and Natural Product Research Center of Excellence, Prince of Songkla University, Hat Yai, Songkhla 90112, Thailand

<sup>e</sup> Electron Microscopy Unit, Department of Pathology, Faculty of Medicine, Prince of Songkla University, Hat Yai, Songkhla 90112, Thailand

<sup>f</sup> Biomedical Sciences Research Complex, School of Biology, University of St Andrews, The North Haugh, St Andrews, Fife, United Kingdom

### ARTICLE INFO

#### Keywords:

Toxicity

Rhodomirtone

*Rhodomirtus tomentosa*

Invertebrate

Vertebrate

### ABSTRACT

**Background:** *Rhodomirtus tomentosa* (Aiton) Hassk. has been traditionally used to relieve various diseases. Rhodomirtone, a bioactive acylphloroglucinol compound isolated from the leaves of *Rhodomirtus tomentosa*, has been scientifically evidenced as a potential antibacterial agent. This study aimed to assess safety of rhodomirtone in both invertebrate and vertebrate models.

**Material and Methods:** Safety of rhodomirtone was determined in an invertebrate model, *Galleria mellonella* as well as vertebrate models including zebrafish (*Danio rerio*) and murine. In addition, toxicity to human erythrocytes was also measured.

**Results:** Treatment of *Galleria mellonella* with rhodomirtone at 100 mg/kg body weight up to four days showed no visible toxic effects (100 % survival). In zebrafish embryo model, at least 80 % survival of embryos was demonstrated when treated with rhodomirtone at 0.5 µg/mL for three days. Prior to clinical trial, it is a prerequisite that rhodomirtone has to be evaluated for its biocompatibility with human blood components. The results displayed that rhodomirtone at 256 µg/mL did not cause any observable human erythrocyte haemolysis. Furthermore, preclinical assessment of rhodomirtone formulation justified potential applications of rhodomirtone in humans. Oral toxicity testing in a mouse model indicated the absence of systemic toxicity when the animals received up to 5000 mg/kg body weight of rhodomirtone formulation for a period of fourteen days.

**Conclusions:** As the minimal inhibitory concentration of rhodomirtone against most Gram-positive pathogens is 0.5–1 µg/mL, the results suggest that it should produce no toxic effects at concentrations used in human, thus support further development in pharmaceutical industries and public health applications.

### 1. Introduction

Increasing antimicrobial resistance and lack of novel antibiotic development are key challenges to global health. There is an urgent need to develop new agents for clinical practice. Natural products and their derivatives have been of crucial importance in identification and development of antibacterial agents [1]. *Rhodomirtus tomentosa* (Aiton) Hassk. has been traditionally used in Southeast Asian countries to relieve various inflammatory symptoms such as diarrhoea, gynaecopathy, urinary tract infections, and wound infections [2]. Rhodomirtone, a

bioactive acylphloroglucinol compound isolated from *Rhodomirtus tomentosa* leaves, has been proposed as a natural antibacterial agent for the treatment of Gram-positive bacterial infections [3–7]. Moreover, antioxidant [8], immunomodulatory [9,10], anti-proliferative [11], anti-acne [12,13], anti-metastatic [14], anti-inflammatory [9,15], anti-psoriatic [15], and anti-depressant effects [16] of rhodomirtone have generated interest among researchers in the development and use of rhodomirtone in public health applications.

Medicinal plant-based antimicrobials play a vital role in the development of effective therapeutics [17]. In order to reach safe

**Abbreviations:** DMSO, dimethyl sulfoxide; PBS, phosphate buffered saline; RBCs, red blood cells

\* Corresponding author.

E-mail address: [supayang.v@psu.ac.th](mailto:supayang.v@psu.ac.th) (S.P. Voravuthikunchai).

<https://doi.org/10.1016/j.toxrep.2020.07.013>

Received 31 October 2019; Received in revised form 18 July 2020; Accepted 21 July 2020

Available online 31 July 2020

2214-7500/ © 2020 The Author(s). Published by Elsevier B.V. This is an open access article under the CC BY-NC-ND license

(<http://creativecommons.org/licenses/by-nc-nd/4.0/>).

applications in human, detailed studies on their toxicity issues have been reported, for example, *Cassia fistula* L. [18], *Musa* sp. [19], and *Rubus fruticosus* L. [20]. Similarly, safety assessment of rhodomylrtone is required for further development as human medicine. Up until now, very limited information is available on the toxicity of rhodomylrtone. Previous studies indicated that rhodomylrtone at concentrations higher than 200 µg/mL revealed very low cytotoxic effects on normal human fibroblasts [12]. Also, a brief report on the effects of rhodomylrtone on human erythrocytes has been documented [5]. In addition, rhodomylrtone formulation produced no skin irritation in rabbits indicating that the compound could be a novel candidate for clinical development [11]. However, there have been no *in vivo* toxicity tests of systemic application of rhodomylrtone.

Rodent models have been proposed as the gold standard for toxicity assessment, however, there are limitations of high costs, inconsistent responses, and ethical issues [21,22]. Recently, alternative lower hierarchy animal models such as zebrafish (*Danio rerio*) [23–25] and insect larvae (*Galleria mellonella*) [26–28] have been employed as they offer various benefits such as reduced ethical concerns, high throughput, and in some cases, easier genetic manipulation, compared with traditional rodent models. In addition, both zebrafish [29] and larvae [30,31] have innate immune system similar as in mammals or jawed vertebrates. Therefore, assessment of rhodomylrtone toxicity in invertebrate model may additionally facilitate the identification of organ-specific or systemic toxicity in mammals.

In order to characterize and further justify the potential use of rhodomylrtone in pharmaceutical industries and public health applications, this study aimed to assess the safety of rhodomylrtone in an invertebrate model, *Galleria mellonella*, and vertebrate models including zebrafish (*Danio rerio*) and mice. Additional experiments were also carried out on human erythrocytes.

## 2. Material and methods

### 2.1. Rhodomylrtone purification

Rhodomylrtone was isolated from *Rhodomylrtus tomentosa* leaves by our research group [3] and the purity of rhodomylrtone was confirmed by nuclear magnetic resonance and mass spectrometry [32]. Stock solutions of rhodomylrtone were prepared by dissolving 50 mg of the compound in 1 mL of 100 % DMSO and stored at –20 °C until further used.

### 2.2. Preparation of rhodomylrtone formulation

Rhodomylrtone formulation was previously described by Chorachoo et al. [11]. The composition of the formulation was carbopol ultrez 21 0.2 g, DC RM 2051 2 g, fumed silica 0.5 g, glycerin 20 g, mineral oil 26 g, propylene glycol 30 g, rhodomylrtone 0.01–0.9 g, and distilled water q.s. to 100 g. The raw materials used in the formulation base were accurately weighed and the mixture was stirred until congealed at room temperature.

### 2.3. *Galleria mellonella* survival assay

*Galleria mellonella* larvae were obtained from UK Waxworms Ltd (Sheffield, UK) and stored at room temperature in darkness with a nonrestricted diet. Larvae weighing within the range of 250–350 mg were selected for each experiment and were used within one week of receipt. Briefly, each group of fifteen randomly-selected larvae was injected with 10 µL of rhodomylrtone (50 and 100 mg/kg). PBS-injected and unmanipulated control groups were included with each experiment. Larvae were incubated at 37 °C and the survival rate of larvae was measured at one day interval over four days incubation. Experiments were performed in duplicate using larvae from different batches [33].

### 2.4. Zebrafish embryo toxicity assay

Zebrafish embryo toxicity was carried out following the method from Morash et al. [34]. Zebrafish embryos at 24 h post fertilization were used to determine the toxic effect of rhodomylrtone in 96-well plates. The embryos were manually dechorionated, placed directly into E3 medium (15 mM NaCl, 0.5 mM KCl, 1 mM CaCl<sub>2</sub>, 1 mM MgSO<sub>4</sub>, 0.05 mM Na<sub>2</sub>HPO<sub>4</sub>, 0.7 mM NaHCO<sub>3</sub>), with or without rhodomylrtone. Rhodomylrtone was tested on 40 embryos at 0.125, 0.5, 2, and 8 µg/mL for five days. Twenty microliters of the compound was added in 180 µL of E3 medium supplemented with 0.01 % methylene blue. The plates were incubated at 28 °C and monitored for survival at regular intervals using stereomicroscope. The scoring of living *versus* dead embryos was assayed by the presence of a heartbeat and circulating blood. Control embryo with 1 % DMSO was incubated under the same conditions. For rhodomylrtone injection into zebrafish, dechorionated embryos were anesthetized with 0.4 % tricaine prior to injection. Two nanoliters of rhodomylrtone (0.5, 5, 10, 20, and 40 µg/mL) were microinjected into the yolk circulation valley of the embryos. Injected embryos were returned to E3 medium and monitored for survival as described previously.

### 2.5. Erythrocyte haemolysis assay

Haemolytic activity was determined following a modified method of Lin and Haynes, [35]. Briefly, 5 mL of blood sample was added to 10 mL of PBS, and then red blood cells (RBCs) were isolated from serum by centrifugation at 10,000 rpm for 10 min.. The RBCs were further washed five times with 10 mL of PBS solution. The purified blood was diluted in 50 mL of PBS. RBCs, incubated with 0.5 % Triton-X and PBS, were used as positive and negative controls, respectively. Cells were incubated with 16, 32, 64, 128, 256, and 512 µg/mL rhodomylrtone at room temperature for 0.5, 1, 2, and 3 h. Finally, the mixtures were centrifuged at 10,000 rpm for 3 min. and 100 µL of supernatant of all samples was transferred to a 96-well plate. The absorbance values of the supernatants at 570 nm were determined using a microplate reader. The percent haemolysis of RBCs was calculated according to the equation: percent haemolysis = [(sample absorbance - negative control absorbance)/(positive control absorbance - negative control absorbance)] × 100.

### 2.6. Acute oral toxicity study in mouse model

In accordance to Organisation for Economic Co-operation and Development (OECD) guidelines no. 425 [36], animal experiments were approved by the Ethics Committee for Animal Experiments of Thailand Institute of Scientific and Technological Research (No. TS-59001). Thirty mice from Institute of Cancer Research (ICR) were employed and acclimatized to the laboratory environment for one week, then the mice were divided into three groups with ten mice per group. Animals were fasted for 8 h prior to dosing but had access to water. A single dose of each formulation was administered *via* oral gavages according to body weight (approximately 0.5 mL/animal). Groups were treated as follows: group I; normal control mice treated with distilled water, group II; treated with a single dose of 2000 mg/kg body weight of rhodomylrtone formulation, and group III; treated with a single dose of 5000 mg/kg body weight of rhodomylrtone formulation. The animals were closely observed for the first 30 min., then for 1 and 3 h. Food was withheld after 3–4 h of dosing. Each group was noticed closely for any toxic effects within the first 4 h and then at regular intervals for a total period of fourteen days. Body weights of animals were taken on day 1, 7, and 14. At the end of the study, surviving animals were sacrificed and both internal organs including kidney and liver were removed for histopathological evaluation.

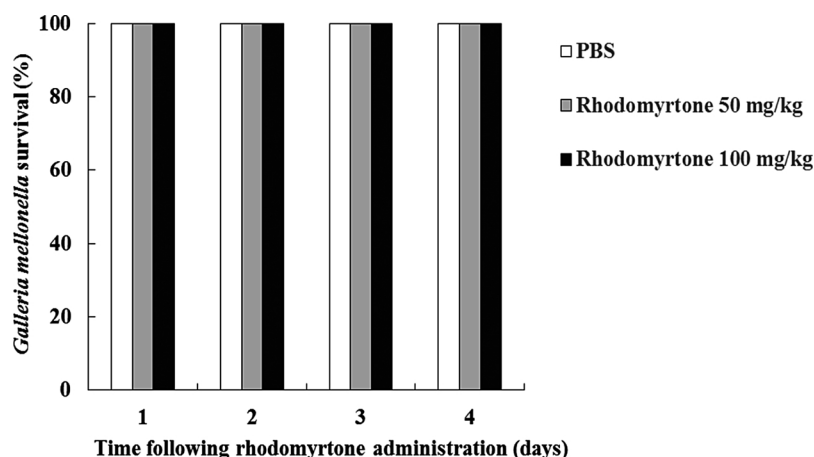


Fig. 1. Survival rate of *Galleria mellonella* larvae following feeding with different concentrations of rhodomyrton (50 and 100 mg/kg) at one day interval over four days of incubation. Experiments were performed in duplicate using larvae from different batches.

### 3. Results and discussion

#### 3.1. Toxicity of rhodomyrton in *Galleria mellonella*

Caterpillars of the Greater Wax moth, *Galleria mellonella* represents a useful preliminary model for assessing *in vivo* efficacy of new antibacterial agents before proceeding to mammalian studies. The invertebrate model *Galleria mellonella* is simple to use, inexpensive, and no ethical approval is required [26]. Use of a *Galleria mellonella* model to determine compound toxicity revealed a strong positive correlation with data obtained from mammalian models, for example, mice [28] and rats [27,28]. In this study, *Galleria mellonella* larvae were used to study acute systemic toxicity of rhodomyrton. The larvae were injected with 50 and 100 mg/kg of the compound and monitored for a four-day period. As shown in Fig. 1, the compound at both concentrations did not exert any toxic effects in the larvae up to four days post-treatment (100 % survival). A number of works confirmed strong antibacterial potency of rhodomyrton against a wide range of Gram-positive bacteria with low minimal inhibitory concentration values (0.5–1 µg/mL), comparable to vancomycin [3,5].

#### 3.2. Toxicity of rhodomyrton on zebrafish embryos

Zebrafish is a prominent vertebrate model for research in genetics, development, regeneration, and toxicology. In addition, zebrafish has become a popular and powerful model over other vertebrate species because of its small size, easy husbandry, and prolific breeding [23,25]. In this study, zebrafish embryos provide a rapid approach to determine cytotoxicity of rhodomyrton. Early development of zebrafish embryos corresponds to the most sensitive phase to external stimuli such as toxicants, chemicals, and mechanical stress [37]. As shown in Table 1, embryos kept in E3 medium with rhodomyrton at 0.125 and 0.5 µg/

Table 1  
Survival rate of zebrafish embryos ( $n = 40$ ) after treatment with rhodomyrton.

Treatment	Zebrafish embryos survival (%)					
	1 h	1 Day	2 Day	3 Day	4 Day	5 Day
Rhodomyrton (µg/mL)						
0.125	100	100	100	100	100	100
0.5	100	100	100	100	100	100
2	100	NA	NA	NA	NA	NA
8	100	NA	NA	NA	NA	NA
1% DMSO	100	100	100	100	100	100

1% DMSO was used as a negative control.

NA: not applicable.

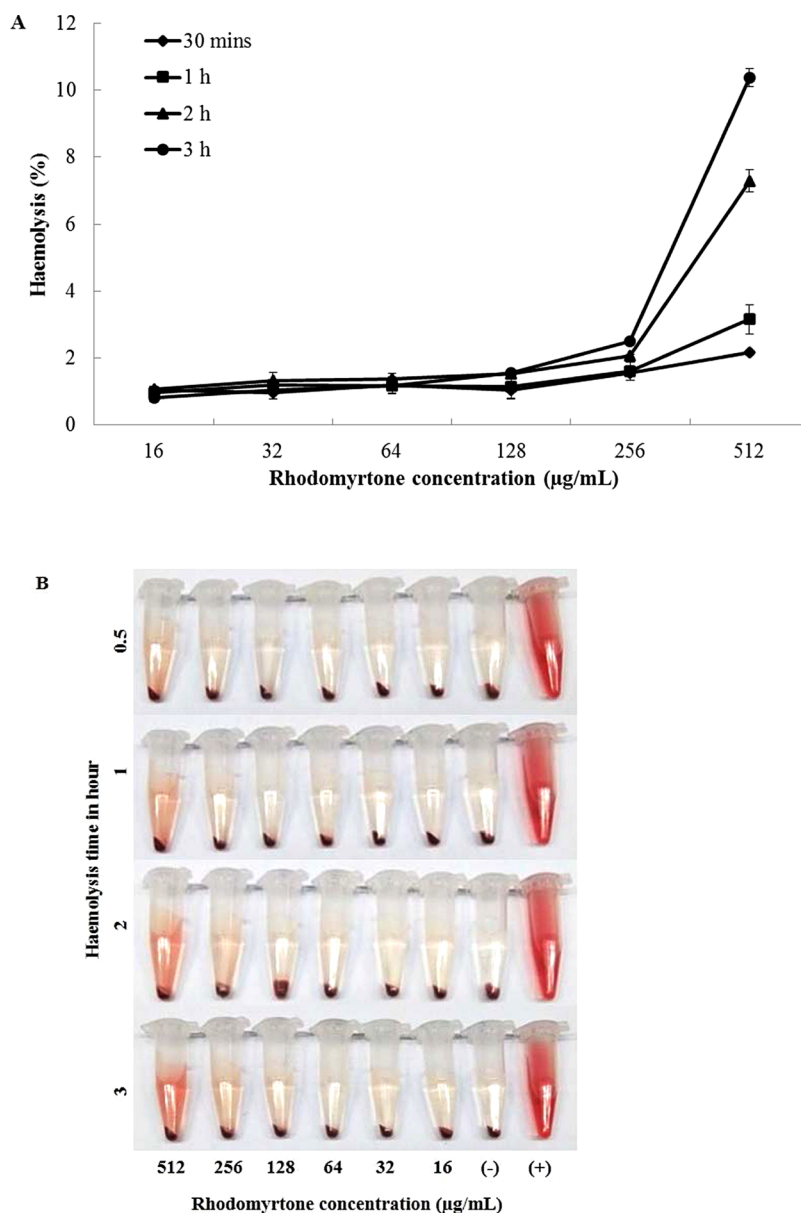
mL for five days showed no toxicity (100 % survival). However, in higher concentrations of rhodomyrton (2 and 8 µg/mL), it was noted that E3 medium became highly turbid which directly affected the overall activity of the zebrafish embryos after certain period. It is well-documented that water turbidity can affect fish behaviour [38]. In addition, it has been clearly demonstrated that zebrafish kept in water of higher turbidity displayed lower activity level, lower aggression, and higher shoaling tendency [39]. Therefore, in the next series of experiments, we directly injected rhodomyrton (0.5, 5, 10, 20, and 40 µg/mL) and 1 % DMSO as a control, into the yolk cells. One day post-fertilization, 82.5–90 % survival embryos in rhodomyrton treatment group were observed (Table 2). With 1 % DMSO in the control group, 77.5 % were detected. Other works have reported similar percentage of spontaneous early mortality [40,41]. Up to 70 % is acceptable for fertilization rate (OECD guidelines no. 236 [42]). Rhodomyrton at 0.5–20 µg/mL resulted in 75–90 % survival of embryos throughout the treatment period (4 days) (Table 2). However, similar survival rate in rhodomyrton and 1% DMSO were noted on day 4 which may due to external stimuli [37].

#### 3.3. Haemolytic property of rhodomyrton on human erythrocytes

Haemolytic property is a major factor limiting the clinical use of antimicrobial compounds. The use of human erythrocytes as a test to evaluate cytotoxicity of new antimicrobial agents is commonly employed. The erythrocyte model is fast, reproducible, and inexpensive and thus contributes to decreasing, refining, and replacing studies conducted with animals [35,43]. A previous study demonstrated the safety of rhodomyrton at 64 µg/mL in human erythrocytes after 30 min. [5]. In this study, extended studies on human erythrocytes were set up. Human erythrocyte haemolysis assay after exposure to rhodomyrton at 16, 32, 64, 128, 256, and 512 µg/mL for 0.5, 1, 2, and 3 h was performed and is shown in Fig. 2. Compared to a positive control of

Table 2  
Survival rate of zebrafish embryos ( $n = 40$ ) after rhodomyrton injection.

Treatment	Zebrafish embryos survival (%)			
	1 Day	2 Day	3 Day	4 Day
Rhodomyrton (µg/mL)				
0.5	87.5	82.5	80	75
5	90	82.5	77.5	72.5
10	90	80	77.5	72.5
20	87.5	75	75	75
40	82.5	77.5	75	65
1% DMSO	77.5	70	67.5	67.5



**Fig. 2.** Haemolytic property of rhodomlyrtone on human erythrocytes. The percent haemolytic of red blood cells (RBS) of various concentrations of rhodomlyrtone (A) and images of RBCs treated with rhodomlyrtone (B). The positive and negative controls used in this study were 0.5 % Triton-X and PBS, respectively. Values are expressed as mean ± SEM.

**Table 3**  
Effects of rhodomlyrtone formulation on body weight and mortality of mice in acute toxicity study.

Groups	Body Weight (g)			Mortality
	1 Day	7 Day	14 Day	
Rhodomlyrtone formulation				
2000 mg/kg	31.7 ± 0.74	34.1 ± 0.85	35.6 ± 0.77	Not found
5000 mg/kg	31.2 ± 0.65	32.9 ± 0.72	34.7 ± 0.60	Not found
Vehicle control	31.6 ± 0.68	34.2 ± 0.81	36 ± 0.60	Not found

Values were presented as mean ± SEM. (n = 10).

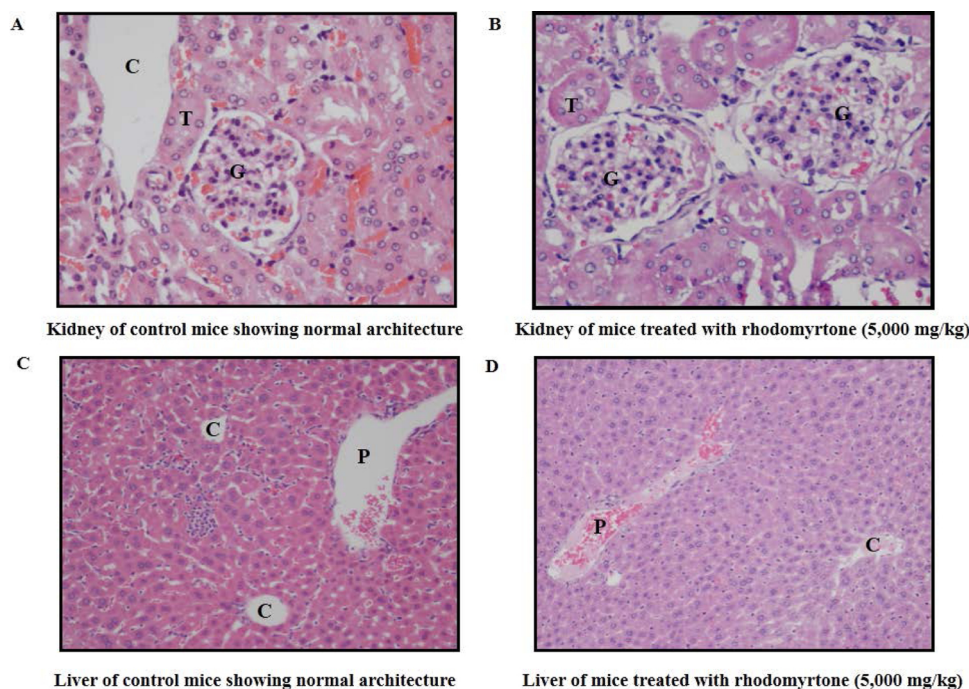
0.5 % Triton X-100 where 100 % haemolysis was observed, rhodomlyrtone did not cause any observable haemoglobin release even at 256 µg/mL. In addition, after 3 h incubation, rhodomlyrtone caused less than 11 % haemolysis even at the highest concentration tested. Different degrees of cytotoxicity are classified as non-toxic (0–9 %),

slightly toxic (10–49 %), toxic (50–89 %), and highly toxic (90–100 %) [32].

### 3.4. Mortality and histological findings after oral treatment of rhodomlyrtone formulation in a mouse model

Mouse models have been used as predictors of human responses as they have genetic and physiological similarities between both species [44,45]. Mice offer a number of benefits, for instance, small, inexpensive to maintain, and easy to ship. In addition, they have short generation times and produce large numbers of offspring [44]. Safety assessment of rhodomlyrtone formulation obtained from the mouse model provides further evidence that development of rhodomlyrtone for possible use in humans is warranted. In this study, oral administration of rhodomlyrtone formulation at single doses of 2000 and 5000 mg/kg for fourteen days indicated no significant abnormal change in behavioral properties of mice and no mortality. Moreover, the body weight of tested animals of both control and treated groups increased gradually





**Fig. 3.** Effects of rhodomirtone formulation (5000 mg/kg) on mouse organ histomorphologies (kidney: A and B; liver: C and D) in acute oral toxicity study. (C: central vein; G: glomerulus; T: tubule; P: portal area).

throughout the study period as presented in Table 3. The difference in body weight between the control and the tested groups were not statistically significant. Regarding the histopathological evaluation, all internal organs including kidney and liver did not show any gross pathological changes (Fig. 3). The results clearly demonstrated that rhodomirtone formulation was safe up to 5000 mg/kg in mice.

#### 4. Conclusions

The findings revealed that rhodomirtone did not cause any signs of toxicity in both invertebrate and vertebrate models. It is evident that the compound did not produce any interaction with red blood cells. This study provides valuable information to support the development of rhodomirtone in pharmaceutical industries and public health applications.

#### Consent for publication

Not applicable.

#### Authors' contributions

TS, JC, SL, and SS designed and performed experiments, analyzed data, prepared figures and tables, and wrote the first draft of a manuscript. SPV and PJC supervised throughout the process and revised the manuscript. All authors read and approved the final manuscript.

#### Ethics approval and consent to participate

Not applicable.

#### Availability of data and material

The data and materials are included within the article.

#### Funding

This research was funded by the Thailand Research Fund Senior Research Scholar (Grant number RTA6180006).

#### CRediT authorship contribution statement

**Thanyaluck Siriyong:** Conceptualization, Methodology, Investigation, Writing - original draft, Writing - review & editing. **Julalak Chorachoo Ontong:** Conceptualization, Methodology, Investigation, Writing - original draft. **Sukanlaya Leejae:** Investigation. **Sakol Suwalak:** Investigation. **Peter John Coote:** Supervision. **Supayang Piyawan Voravuthikunchai:** Supervision.

#### Declaration of Competing Interest

The authors declare that they have no competing interests.

#### Acknowledgements

Not applicable.

#### References

- [1] M.G. Moloney, Natural products as a source for novel antibiotics, *Trends Pharmacol. Sci.* 37 (2016) 689–701.
- [2] H.A.B.D. Hamid, S.S.Z.R. Mutazah, M.M. Yusoff, *Rhodomirtus tomentosa*: a phytochemical and pharmacological review, *Asian J. Pharm. Clin. Res.* 10 (2017) 10–16.
- [3] S. Limsuwan, E.N. Trip, T.R. Kouwen, S. Piersma, A. Hiranrat, W. Mahabusarakam, S.P. Voravuthikunchai, J.M. van Dijk, O. Kayser, Rhodomirtone: a new candidate as natural antibacterial drug from *Rhodomirtus tomentosa*, *Phytomedicine* 16 (2009) 645–651.
- [4] W. Sianglum, P. Srimanote, P.W. Taylor, H. Rosado, S.P. Voravuthikunchai, Transcriptome analysis of responses to rhodomirtone in methicillin-resistant *Staphylococcus aureus*, *PLoS One* 7 (2012) e45744.
- [5] S. Leejae, P.W. Taylor, S.P. Voravuthikunchai, Antibacterial mechanisms of rhodomirtone against important hospital-acquired antibiotic-resistant pathogenic bacteria, *J. Med. Microbiol.* 62 (2013) 78–85.
- [6] W. Mitsuwana, A. Olaya-Abril, M. Calderón-Santiago, I. Jiménez-Munguía, J.A. González-Reyes, F. Priego-Capote, S.P. Voravuthikunchai, M.J. Rodríguez-Ortega, Integrated proteomic and metabolomic analysis reveals that rhodomirtone

- reduces the capsule in *Streptococcus pneumoniae*, Sci. Rep. 7 (2017) 2715.
- [7] D. Saeloh, M. Wenzel, T. Rungrotmongkol, L.W. Hamoen, V. Tipmanee, S.P. Voravuthikunchai, Effects of rhodomyltone on Gram-positive bacterial tubulin homologue FtsZ, Peer J 5 (2017) e2962.
- [8] S. Leejae, L. Hasap, S.P. Voravuthikunchai, Inhibition of staphyloxanthin biosynthesis in *Staphylococcus aureus* by rhodomyltone, a novel antibiotic candidate, J. Med. Microbiol. 62 (2013) 421–428.
- [9] S. Srisuwan, P. Tongtawe, P. Srimanote, S.P. Voravuthikunchai, Rhodomyltone modulates innate immune responses of THP-1 monocytes to assist in clearing methicillin-resistant *Staphylococcus aureus*, PLoS One 9 (2014) e110321.
- [10] P. Na-Phatthalung, M. Teles, S.P. Voravuthikunchai, L. Tort, C. Fierro-Castro, Immunomodulatory effects of *Rhodomyrtus tomentosa* leaf extract and its derivative compound, rhodomyltone, on head kidney macrophages of rainbow trout (*Oncorhynchus mykiss*), Fish Physiol. Biochem. 44 (2018) 543–555.
- [11] J. Chorachoo, D. Saeloh, T. Srichana, T. Amnuakit, K.S. Musthafa, S. Srethirutchai, S.P. Voravuthikunchai, Rhodomyltone as a potential anti-proliferative and apoptosis inducing agent in HaCaT keratinocyte cells, Eur. J. Pharmacol. 772 (2016) 144–151.
- [12] J. Saising, S.P. Voravuthikunchai, Anti *Propionibacterium acnes* activity of rhodomyltone, an effective compound from *Rhodomyrtus tomentosa* (Aiton) Hassk. leaves, Anaerobe 18 (2012) 400–404.
- [13] S. Wunnoo, J. Saising, S.P. Voravuthikunchai, Rhodomyltone inhibits lipase production, biofilm formation, and disorganizes established biofilm in *Propionibacterium acnes*, Anaerobe 43 (2017) 61–68.
- [14] M. Tayeh, S. Nilwaragoon, W. Mahabusarakum, R. Watanapokasin, Anti-metastatic effect of rhodomyltone from *Rhodomyrtus tomentosa* on human skin cancer cells, Int. J. Oncol. 50 (2017) 1035–1043.
- [15] J. Chorachoo, S. Lambert, T. Furnholm, L. Roberts, L. Reingold, S. Auepemie, S.P. Voravuthikunchai, A. Johnston, The small molecule rhodomyltone suppresses TNF- $\alpha$  and IL-17A-induced keratinocyte inflammatory responses: a potential new therapeutic for psoriasis, PLoS One 13 (2018) e0205340.
- [16] H. Chai, B. Liu, H. Zhan, X. Li, Z. He, J. Ye, Q. Guo, J. Chen, J. Zhang, S. Li, Antidepressant effects of rhodomyltone in mice with chronic unpredictable mild stress-induced depression, Int. J. Neuropsychopharmacol. 22 (2019) 157–164.
- [17] P.D. Gupta, T.J. Birdi, Development of botanicals to combat antibiotic resistance, J. Ayurveda Integr. Med. 8 (2017) 266–275.
- [18] A.Y. Chaerunisaa, Y. Susilawati, M. Muhaimin, T. Milanda, R. Hendriani, A. Subarnas, Antibacterial activity and subchronic toxicity of *Cassia fistula* L. barks in rats, Toxicol. Rep. 7 (2020) 649–657.
- [19] L.R.A. Al-Mqbali, M.A. Hossain, Cytotoxic and antimicrobial potential of different varieties of ripe banana used traditionally to treat ulcers, Toxicol. Rep. 6 (2019) 1086–1090.
- [20] A.M. Weli, H.S. Al-Saadi, R.S. Al-Fudhaili, A. Hossain, Z.B. Putit, M.K. Jasim, Cytotoxic and antimicrobial potential of different leaves extracts of *R. fruticosus* used traditionally to treat diabetes, Toxicol. Rep. 7 (2020) 183–187.
- [21] C. Merlot, Computational toxicology—a tool for early safety evaluation, Drug Discov. Today 15 (2010) 16–22.
- [22] H. Sun, M. Xia, C.P. Austin, R. Huang, Paradigm shift in toxicity testing and modeling, AAPS J. 14 (2012) 473–480.
- [23] A.J. Hill, H. Teraoka, W. Heideman, R.E. Peterson, Zebrafish as a model vertebrate for investigating chemical toxicity, Toxicol. Sci. 86 (2005) 6–19.
- [24] J.R. Mathias, M.T. Saxena, J.S. Mumm, Advances in zebrafish chemical screening technologies, Future Med. Chem. 4 (2012) 1811–1822.
- [25] J.R. Meyers, Zebrafish: development of a vertebrate model organism, Curr. Protoc. Essent. Lab. Tech. (2018) e19.
- [26] A.P. Desbois, P.J. Coote, Utility of greater wax moth larva (*Galleria mellonella*) for evaluating the toxicity and efficacy of new antimicrobial agents, Adv. Appl. Microbiol. 78 (2012) 25–53.
- [27] R. Maguire, O. Duggan, K. Kavanagh, Evaluation of *Galleria mellonella* larvae as an *in vivo* model for assessing the relative toxicity of food preservative agents, Cell Biol. Toxicol. 32 (2016) 209–216.
- [28] E. Allegra, R.W. Titball, J. Carter, O.L. Champion, *Galleria mellonella* larvae allow the discrimination of toxic and non-toxic chemicals, Chemosphere 198 (2018) 469–472.
- [29] A.H. Meijer, H.P. Spaink, Host-pathogen interactions made transparent with the zebrafish model, Curr. Drug Targets 12 (2011) 1000–1017.
- [30] M. Cyttrynska, A. Zdybicka-Barabas, T. Jakubowicz, The involvement of protein kinase A in the immune response of *Galleria mellonella* larvae to bacteria, Acta Biochim. Pol. 54 (2007) 167–174.
- [31] N. Browne, M. Heelan, K. Kavanagh, An analysis of the structural and functional similarities of insect hemocytes and mammalian phagocytes, Virulence 4 (2013) 597–603.
- [32] D. Salmi, M.V. Sargent, B.W. Skelton, I. Soeiro, M. Sutisna, A.H. White, E. Yulinah, Rhodomyltone, an antibiotic from *Rhodomyrtus tomentosa*, Aust. J. Chem. 55 (2002) 229–232.
- [33] A.P. Desbois, P.J. Coote, Wax moth larva (*Galleria mellonella*): an *in vivo* model for assessing the efficacy of antistaphylococcal agents, J. Antimicrob. Chemother. 66 (2011) 1785–1790.
- [34] M.G. Morash, S.E. Douglas, A. Robotham, C.M. Ridley, J.W. Gallant, K.H. Soanes, The zebrafish embryo as a tool for screening and characterizing pleurocidin host-defense peptides as anti-cancer agents, Dis. Model. Mech. 4 (2011) 622–633.
- [35] Y.S. Lin, C.L. Haynes, Impacts of mesoporous silica nanoparticle size, pore ordering, and pore integrity on hemolytic activity, J. Am. Chem. Soc. 132 (2010) 4834–4842.
- [36] Organisation for Economic Co-operation and Development, Guideline for Testing of Chemicals, Guidance, no. 425, (2001).
- [37] D. Mandrell, L. Truong, C. Jephson, Automated zebrafish chorion removal and single embryo placement: optimizing throughput of zebrafish developmental toxicity screens, J. Lab. Autom. 17 (2012) 66–74.
- [38] J.J. Meager, R.S. Batty, Effects of turbidity on the spontaneous and prey-searching activity of juvenile Atlantic cod (*Gadus morhua*), Philos. Trans. R. Soc. Lond. B. Biol. Sci. 362 (2007) 2123–2130.
- [39] K. Wojtas, P. Pokorný, A. Mucha, Effect of water turbidity on zebrafish behaviour, Front. Mar. Sci. (2015).
- [40] B. Fraysse, R. Mons, J. Garric, Development of a zebrafish 4-day embryo-larval bioassay to assess toxicity of chemicals, Ecotoxicol. Environ. Saf. 63 (2006) 253–267.
- [41] S. Ali, H.G. van Mil, M.K. Richardson, Large-scale assessment of the zebrafish embryo as a possible predictive model in toxicity testing, PLoS One 6 (2011) e21076.
- [42] Organisation for Economic Co-operation and Development, Guideline for Testing of Chemicals, Guidance, no. 236, (2013).
- [43] M. Pagano, C. Faggio, The use of erythrocyte fragility to assess xenobiotic cytotoxicity, Cell Biochem. Funct. 33 (2015) 351–355.
- [44] E.W. Uhl, N.J. Warner, Mouse models as predictors of human responses: evolutionary medicine, Curr. Pathobiol. Rep. 3 (2015) 219–223.
- [45] R.L. Perlman, Mouse models of human disease: an evolutionary perspective, Evol. Med. Public Health 1 (2016) 170–176.