

RESEARCH ARTICLE

Heart failure assessed based on plasma B-type natriuretic peptide (BNP) levels negatively impacts activity of daily living in patients with hip fracture

Yusuke Tamamura¹, Michiko Matsuura¹, Sumiko Shiba², Toshio Nishikimi^{3,4*}**1** Department of Rehabilitation, Wakakusa Tatsuma Rehabilitation Hospital, Daito City, Osaka, Japan,**2** Department of Physical Therapy, Konan Women's University, Higashinada-ku, Kobe City, Hyogo,**3** Department of Medicine, Wakakusa Tatsuma Rehabilitation Hospital, Daito City, Osaka, Japan,**4** Department of Cardiovascular Medicine, Kyoto University Graduate School of Medicine, Sakyo-ku, Kyoto, Japan* nishikim@kuhp.kyoto-u.ac.jp**OPEN ACCESS**

Citation: Tamamura Y, Matsuura M, Shiba S, Nishikimi T (2020) Heart failure assessed based on plasma B-type natriuretic peptide (BNP) levels negatively impacts activity of daily living in patients with hip fracture. PLoS ONE 15(8): e0237387. <https://doi.org/10.1371/journal.pone.0237387>

Editor: Tatsuo Shimosawa, International University of Health and Welfare, School of Medicine, JAPAN

Received: March 7, 2020

Accepted: July 24, 2020

Published: August 13, 2020

Copyright: © 2020 Tamamura et al. This is an open access article distributed under the terms of the [Creative Commons Attribution License](https://creativecommons.org/licenses/by/4.0/), which permits unrestricted use, distribution, and reproduction in any medium, provided the original author and source are credited.

Data Availability Statement: Data are available from figshare: <http://doi.org/10.6084/m9.figshare.12356198> Figure: <http://doi.org/10.6084/m9.figshare.12356294>.

Funding: This study was supported in part by Scientific Research Grants-in-Aid 18K08103 (to TN) from the Ministry of Education, Culture, Sports, Science and Technology of Japan, which had no role in study design, data collection and analysis, decision to publish, or preparation of the manuscript.

Abstract

Several studies have shown that nutrition and muscle strength were associated with functional recovery in patients with hip fracture. However, the impact of heart failure on the improvement of activity of daily living (ADL) in patients with hip fracture have not been fully investigated. The purpose was investigating the effect of heart failure on the ADL improvement by rehabilitation in patients with hip fracture. A total of 116 patients with hip fracture discharged from our convalescent rehabilitation ward were studied. Heart failure was assessed based on plasma B-type natriuretic peptide (BNP) levels on admission. ADL was assessed based on rehabilitation effectiveness (REs), which was calculated using the FIM instrument. Clinical, demographic, and nutritional variables were measured. Multiple regression analysis was performed with REs as the dependent variable; variables showing significant correlation with REs in univariate analyses were selected as independent variables. Based on plasma BNP levels, we assigned 39 patients to a Low group: 22 (17–25) median (interquartile) pg/mL, 39 to a Middle group: 52 (42–65) pg/mL, and 38 to a High group: 138 (93–209) pg/mL. REs, handgrip strength, Hb, albumin, and GNRI were higher and age was younger in the Low group than High group (each $p < 0.01$, respectively). Multiple linear regression analysis revealed that age ($p < 0.05$), sex ($p < 0.05$), handgrip strength ($p < 0.01$), FOIS at admission ($p < 0.01$), rehabilitation time per day ($p < 0.01$), and BNP ($p < 0.05$) were significantly associated with REs. The effect of rehabilitation on ADL improvement was significantly blunted in the High group compared to the Low group. In conclusion, these results suggest that heart failure assessed based on plasma BNP levels negatively impacts improvements in ADL achieved through rehabilitation in patients with hip fracture.

Competing interests: All authors have declared that no competing interests exist.

Abbreviations: ADL, activity of daily living; ANOVA, analysis of variance; ANCONA, analysis of covariance; BNP, B-type natriuretic peptide; CTR, cardio thoracic ratio; CRP, plasma C-reactive protein; FIM, functional independence measurement; FOIS, functional oral intake scale; GNRI, geriatric nutritional risk index; LOS, length of hospital stay; REs, rehabilitation effectiveness.

Introduction

Hip fractures in older adults have critical consequences in terms of increased risk of mortality, functional decline, and decreased quality of life. [1–3] Globally, the annual number of hip fractures was estimated to be 1.6 million in 2000, and this number is expected to rise to around 6.3 million by 2050. [4] This is particularly noteworthy, as an earlier study estimated that 60% of patients with hip fracture do not recover previous functional ability. [5] Moreover, about 40% of these patients are unable to return to their homes after acute rehabilitation. [6] This suggests that many hip fracture patients suffer a significant loss of functional independence, and that functional recovery is one of the most important rehabilitation goals for patients with hip fractures. For that reason, identification of predictors of functional status is important. For example, several studies have shown that handgrip strength, nutritional status, and the presence of diabetes mellitus are prognostic factors for hip fracture patients. [7–9]

In developed countries, the populations are rapidly aging, and the numbers of heart failure patients are increasing as these populations age. [10] In addition, a recent large-scale observational study reported that about 30% of heart failure patients are over 80 years old. [11] This suggests that the number of hip fractures accompanied by heart failure will greatly increase in the future. However, the impact of heart failure on the recovery of activity of daily living (ADL) in patients following hip fracture has not been fully investigated. A previous study showed that improvement of the functional independence measurement (FIM) during the first 6 months was diminished in elderly hip fracture patients with a self-reported history of heart failure. [12] Similarly, FIM effectiveness was reportedly reduced in hip fracture patients with a history of heart failure. [13] However, because these two studies relied on self-reported diagnoses of heart failure or retrospectively confirmed heart failure diagnosis based on the medical record, the degree and severity of heart failure during rehabilitation could not be assessed.

B-type natriuretic peptide (BNP) is a cardiac hormone produced and secreted by the heart. [14] Plasma BNP levels increase in proportion to the severity of heart failure and they decrease as treatment improves the patient's condition. [15] Since the signs and symptoms of heart failure are often nonspecific, a helpful history is not often obtainable, and dyspnea may be a nonspecific finding in whom comorbidity with respiratory disease is common, it is often difficult to diagnose heart failure especially in elderly patients. In this clinical setting, BNP is often superior to clinical judgement for diagnosing heart failure. [16,17] In the present study, we examined the effect of heart failure on ADL improvement through rehabilitation in hip fracture patients. Measurements of BNP enabled us to assess the current state of the patients' heart failure without relying on the history of heart failure.

Methods

Ethics

This study was approved by the ethics committee of Wakakusa-Tatsuma Rehabilitation Hospital (approved number 19100761). All participants or their legal representatives provided written informed consent. The study was performed in accordance with the ethical standards of the 1964 Declaration of Helsinki and its later amendments.

Study design and subject

This study was a retrospective observational cohort study. A total of 167 patients (age ≥ 65 years) were discharged from the convalescent rehabilitation ward of Wakakusa-Tatsuma Rehabilitation Hospital after surgery for hip fracture between April 1, 2017 and March 31, 2019.

The hip fractures included femoral neck, trochanteric, and subtrochanteric fractures. After exclusion of 51 patients, 116 patients were studied (Fig 1). The subjects underwent physical or occupational therapy from 40 to 180 minutes per day in a convalescent rehabilitation ward. In Japan, the medical insurance system allows hip fracture patients to be transferred from an acute care hospital to a convalescent rehabilitation ward within approximately 30 days after injury and to receive rehabilitation for up to 90 days after admission to the convalescent rehabilitation hospital. [18]

Measurements

Demographic data including age, gender, height, weight, body mass index, period from injury to hospitalization, and length of hospital stay (LOS) were collected from medical records. Clinical data such as swallowing function, nutritional status, and rehabilitation index were also collected. The swallowing function was evaluated using the functional oral intake scale (FOIS). Nutritional status was assessed based on serum albumin levels and the geriatric nutritional risk index (GNRI). The rehabilitation index was the time of rehabilitation per day.

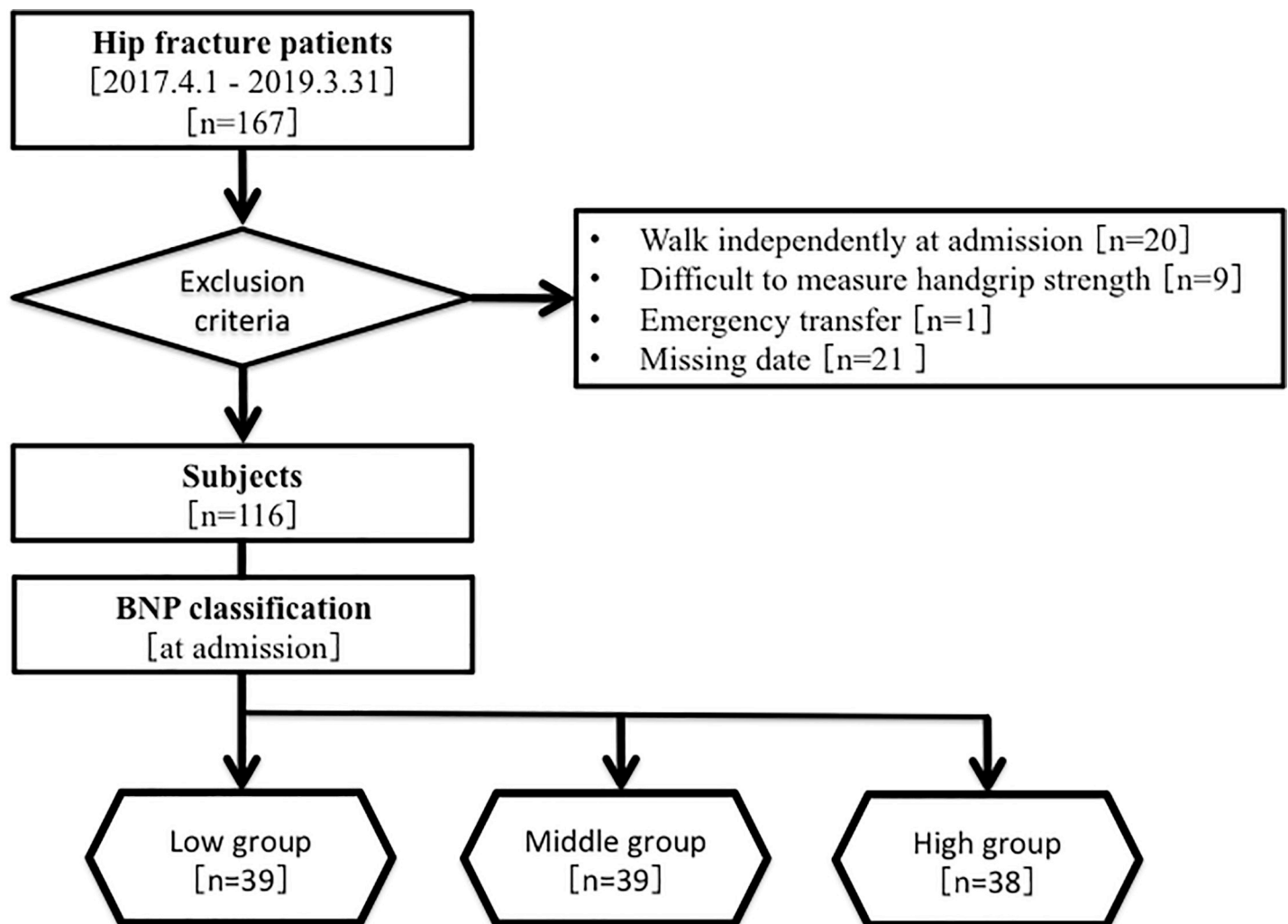


Fig 1. Flowchart of subject selection and classification. BNP = B-type natriuretic peptide.

<https://doi.org/10.1371/journal.pone.0237387.g001>

We used the FIM as the ADL indicator. This tool is among the most widely used measurements for assessing a patient's ability to perform ADL and consists of 13 motor and 5 cognitive items that are each scored 1–7, depending on the amount of assistance required to perform each basic activity. The motor items include eating, grooming, bathing, dressing the upper body and lower body, toileting, bladder and bowel management, bed, chair, or wheelchair transfer, toilet transfer, tub transfer, walk/wheelchair, and use of the stairs. The five cognitive items include comprehension, expression, social interaction, problem solving, and memory. The total FIM score ranged from 18 (reflecting full dependence) to 126 (reflecting complete independence). [19]

On admission, physical examination, electrocardiogram, chest X-ray, and blood sampling for BNP and C-reactive protein (CRP) were performed. Cardiothoracic ratio was measured by chest X-ray. CRP was measured as an indicator of inflammation, while BNP was measured as an indicator of heart failure status. From the medical history including history taking from patients and their family, patient's symptom, medical letter of referral, and above findings on admission, the patients were classified to the heart failure stage according to the ACC/AHA guideline [20] by an experienced cardiologist who specializes heart failure (T.N.). Plasma BNP levels were measured using a sandwich chemiluminescence enzyme immunoassay [21]. We divided the patients into three groups based on their plasma BNP levels at admission: 39 were in the Low group, 39 in the Middle group, and 38 in the High group, starting from the lowest BNP at admission.

Main outcome

The main outcome was rehabilitation effectiveness (REs) calculated using the FIM instrument, which was calculated using the following formula: $(\text{FIM at discharge} - \text{FIM at admission}) / (126 - \text{FIM at admission})$. REs was expressed as a percentage reflecting the proportion of potential improvement actually achieved during rehabilitation, thus REs correcting for a ceiling effect. REs is the concept first suggested by Heinemann et al. [22] as achievement of rehabilitation potential. According to a recent review paper, the concept of 'achievement of rehabilitation potential' is the same as the Montebello Rehabilitation Factor Score (MRFS), relative functional gain (RFG), and REs, and we used REs in this study because REs is currently the most widely used [23].

Statistical analysis

Continuous data are presented as means \pm standard deviation, while non-parametric data are presented as the median (interquartile range 25–75 percentile). Differences among groups were evaluated using one-way analysis of variance (ANOVA) with post-hoc Fisher's PLSD test. Categorical data are expressed as incidences and percentages, and comparisons were made using the χ^2 -test. Multiple regression analysis was performed with REs as the dependent variable; age, gender, handgrip strength as an indicator of physical function, FOIS at admission as an indicator of swallowing status, GNRI as an indicator of nutrition status, provided rehabilitation time as an indicator of rehabilitation, and variables that had a significant correlation in the univariate regression analysis of REs were selected as independent variables. FIM scores and serum albumin levels were excluded because they closely correlated with REs or GNRI, respectively. In addition, analysis of covariance (ANCOVA) model was estimated to examine the difference in REs by BNP levels, controlling for age and sex. P values < 0.05 were considered statistically significant. Statistical analyses were performed using STATVIEW version 5 (Abacus Concepts, Berkeley, CA).

Results

Among the 116 hip fracture patients studied, the mean age was 82 ± 8 years (range: 65 to 102 years), and 26 patients (22%) were men. Based on their plasma BNP levels at admission, we

assigned 39 patients to the Low group (median: 22 pg/mL, interquartile: 17–25 pg/mL), 39 patients to the Middle group (median: 52 pg/mL, interquartile: 42–65 pg/mL), and 38 patients to the High group (median: 138 pg/mL, interquartile: 93–209 pg/mL). According to the ACC/AHA guideline classification, HF Stage A was 20.7% (24/116) and percentage of heart failure risk factors was hypertension (recorded in medical reports, antihypertensive treatment on admission, or systolic blood pressure >140mmHg or diastolic blood pressure >90 mmHg on admission) was 66.7% (16/24), diabetes mellitus (recorded in medical reports, recent use of antidiabetic drugs, a fasting blood glucose value of ≥ 126 mg/dL on admission, and/or a hemoglobin A1c value of $\geq 6.5\%$ on admission) was 20.8% (5/24), and others were 12.5% (3/24). HF Stage B was 48.3% (56/116) and percentage of patients with structural heart disease was left ventricular hypertrophy (by echocardiography or electrocardiogram) was 69.6% (39/56), cardiac dilatation (by echocardiography or thoracic computed tomography or chest X-ray) was 16.1% (9/56), decrease of left ventricular ejection fraction (ejection fraction < 50% by echocardiography) was 10.7% (6/56), and others were 3.6% (2/56). HF Stage C was 28.4% (33/116) and a history of heart failure was obtained from medical referral letter (13/33), from the patients or their family (11/33), from the review of patients medical record (7/33), and documentation of signs and symptom of heart failure by patient's physician on admission (2/33). Most of the patients were in NYHA functional class II (NYHA I/II/III: 5/22/6). Stage 0 was 2.6% (3/116). The classification of each group is as follows: LOW group: 21 patients were HF Stage A, 15 patients were HF Stage B, 1 patient was HF Stage C, and 2 were Stage 0. Middle group: 2 patients were HF Stage A, 29 patients were HF Stage B, 7 patients were HF Stage C, and 1 was Stage 0. High group: 1 patient was HF Stage A, 12 patients were HF Stage B, and 25 patients were HF Stage C. The demographic and clinical data for each group are presented in [Table 1](#).

The mean age in the Low group was younger than in the High group, whereas there were no differences with respect to gender, period from injury to hospitalization, or LOS among the groups. Handgrip strength, cognitive FIM, albumin, GNRI, cholinesterase, and hemoglobin at admission were all higher in the Low group than the High group ([Fig 2](#)). In addition, motor FIM, cognitive FIM, total FIM, albumin, GNRI, and cholinesterase at discharge were also higher in Low group than the High group. Regarding outcome, motor FIM gain, total FIM gain, motor FIM effectiveness, percentage discharged to home, and REs were all higher in the Low group than the High group ([Fig 2](#)). After adjusted age and sex by ANCOVA, mean values of REs decreased significantly from the Low to the High tertile of BNP ($P < 0.01$). According to age-specific tertiles of BNP, a significant difference was observed between Low and Middle tertile of BNP in patients < 83 years old group, but not in patients ≥ 83 years old group ([Fig 3](#)). There was no difference in rehabilitation time/day between the two groups. Most of the values in the Middle group were between those in the Low and High groups, though some of the values in the Middle group significantly differed from those in Low group.

We also analyzed the data after dividing the patients into three groups based on the REs tertiles. Demographic and clinical data for each group is presented in [Table 2](#).

The mean age in the High group was younger than in the Low group, whereas there were no differences with respect to gender, period from injury to hospitalization, or LOS among the three groups. Height, weight, handgrip strength, FOIS, motor FIM, cognitive FIM, total FIM, albumin, GNRI, cholinesterase, and hemoglobin at admission were all significantly higher in the High group than the Low group, while plasma BNP at admission was lower in the High group than the Low group ([Fig 4](#)). In addition, weight, FOIS, motor FIM, cognitive FIM, total FIM, albumin, GNRI, and cholinesterase at discharge were all higher in the High group than the Low group, whereas plasma CRP level at discharge was lower in the High group than the Low group. Regarding heart failure stage, the proportion of HF stage C was significantly higher

Table 1. Demographic and clinical data for each BNP group.

Variable	Total (n = 116)	Low (n = 39)	Middle (n = 39)	High (n = 38)	P value
BNP (pg/ml) median (25–75%)	50 (25–92)	22 (17–25)	52 (42–65)	138 (93–209)	
BNP (pg/ml) mean ± SD	91 ± 139	21 ± 7	52 ± 13	204 ± 200*†	< 0.01
HF Stage, n (%)					
0	3 (2.6)	2 (5.1)	1 (2.6)	0 (0)	
A	24 (20.7)	21 (53.8)	2 (5.1)	1 (2.6)	< 0.01
B	56 (48.3)	15 (38.5)	29 (74.4)	12 (31.6)	< 0.01
C	33 (28.4)	1 (2.6)	7 (17.9)	25 (65.8)	< 0.01
D	0 (0)	0 (0)	0 (0)	0 (0)	
CTR (%)	55.8 ± 6.2	51.7 ± 4.8	55.7 ± 5.2*	60.0 ± 5.5*†	< 0.01
Age (years)	82 ± 8	79 ± 8	81 ± 7	84 ± 10*	< 0.05
Male, n, (%)	26 (22)	12 (31)	8 (21)	6 (16)	0.27
Period from injury to hospitalization (day)	26 ± 11	25 ± 10	27 ± 12	27 ± 12	0.71
Length of hospital stay (days)	75 ± 19	75 ± 15	75 ± 18	74 ± 22	0.89
Height (cm)	150.5 ± 9.6	152.3 ± 10.1	150.6 ± 8.4	148.7 ± 9.9	0.25
Weight at admission (kg)	46.4 ± 9.6	48.4 ± 10.7	46.5 ± 7.6	44.2 ± 9.9	0.17
BMI at admission (kg/m ²)	20.4 ± 3.6	20.8 ± 4.1	20.7 ± 3.5	19.9 ± 3.2	0.49
Handgrip strength (kg)	11.9 ± 7.5	14.8 ± 8.4	9.9 ± 4.1*	10.8 ± 8.3*	< 0.01
FOIS at admission	6.0 ± 1.1	6.2 ± 1.0	6.0 ± 1.0	5.7 ± 1.2	0.25
FIM at admission (score)					
Motor FIM	35 ± 13	38 ± 13	34 ± 14	34 ± 13	0.39
Cognitive FIM	20 ± 7	22 ± 7	21 ± 7	18 ± 7*	< 0.05
Total FIM	56 ± 18	60 ± 18	55 ± 19	52 ± 18	0.17
Provided energy (kcal/day)	1578 ± 213	1604 ± 180	1566 ± 266	1562 ± 184	0.64
Albumin at admission (mg/dl)	3.3 ± 0.6	3.5 ± 0.5	3.2 ± 0.6*	3.2 ± 0.6*	< 0.05
GNRI at admission	88.2 ± 11.8	92.1 ± 12.1	86.9 ± 12.4*	85.6 ± 10.0*	< 0.05
CHE at admission (IU/l)	204 ± 75	233 ± 53	200 ± 56*	177 ± 49*	< 0.01
CRP at admission (mg/dl)	0.9 ± 1.5	0.8 ± 1.7	1.1 ± 1.9	0.7 ± 0.8	0.43
Hb at admission (g/dl)	10.9 ± 1.4	11.5 ± 1.6	10.7 ± 1.4*	10.4 ± 1.1*	< 0.01
Cre at admission (mg/dl)	0.8 ± 0.4	0.7 ± 0.3	0.8 ± 0.5	0.8 ± 0.3	0.71
eGFR at admission (mL/min/1.73 m ²)	68.1 ± 24.7	71.4 ± 23.4	66.5 ± 25.9	60.4 ± 25.2	0.61
Weight at discharge (kg)	46.9 ± 9.4	49.2 ± 9.9	46.4 ± 7.1	45.0 ± 10.7*	0.13
BMI at discharge (kg/m ²)	20.6 ± 3.5	21.2 ± 3.9	20.5 ± 3.3	20.2 ± 3.3	0.42
FOIS at discharge	5.9 ± 1.2	6.1 ± 1.0	5.9 ± 1.3	5.7 ± 1.2	0.25
FIM at discharge (score)					
Motor FIM	61 ± 19	67 ± 19	61 ± 18	54 ± 20*	< 0.05
Cognitive FIM	23 ± 7	26 ± 7	23 ± 7	21 ± 8*	< 0.05
Total FIM	84 ± 26	93 ± 24	84 ± 24	76 ± 27*	< 0.05
Albumin at discharge (mg/dl)	3.4 ± 0.5	3.6 ± 0.5	3.3 ± 0.5*	3.3 ± 0.4*	< 0.05
GNRI at discharge	89.7 ± 11.4	93.2 ± 12.4	88.3 ± 10.1	87.5 ± 11.0*	0.06
CHE at discharge (IU/l)	213 ± 57	240 ± 48	202 ± 60*	197 ± 53*	< 0.01
CRP at discharge (mg/dl)	0.9 ± 2.1	0.4 ± 0.6	1.3 ± 2.0	1.1 ± 2.9	0.13
Rehabilitation outcome					
Rehabilitation time/day (min)	120 ± 16	124 ± 14	116 ± 16*	120 ± 14	< 0.05
Motor FIM gain (score)	25 ± 14	29 ± 13	27 ± 13	20 ± 15*†	< 0.05
Total FIM gain (score)	28 ± 16	33 ± 15	29 ± 14	23 ± 18*	< 0.05
Motor FIM effectiveness (%)	48.6 ± 28.3	58.5 ± 26.9	49.6 ± 23.8	37.8 ± 30.8*	< 0.01
REs (%)	44.2 ± 26.4	53.5 ± 25.5	44.4 ± 22.8	34.8 ± 28.2*	< 0.01

(Continued)

Table 1. (Continued)

Variable	Total (n = 116)	Low (n = 39)	Middle (n = 39)	High (n = 38)	P value
Discharge to home (%)	62 (73/116)	74 (29/39)	67 (26/39)	47 (18/38)	< 0.05

Data are presented as the mean \pm standard deviation. Statistical analysis: one-way ANOVA with post-hoc Fisher's PLSD test, χ^2 -test. Significant Difference: $p < 0.05$ *) vs. the Low Group, †) vs. the Middle Group.

BMI = body mass index; BNP = B-type natriuretic peptide; CHE = cholinesterase; Cre = creatinine; CRP = plasma C-reactive protein; CTR = cardio thoracic ratio; eGFR = estimated glomerular filtration rate; FIM = functional independence measure; FOIS = functional oral intake scale; GNRI = geriatric nutritional risk index, Hb = hemoglobin; REs; rehabilitation effectiveness.

<https://doi.org/10.1371/journal.pone.0237387.t001>

in Low group. Regarding outcomes, motor FIM gain, total FIM gain, motor FIM effectiveness, and percentage discharged to home were all higher in the High group than the Low group. There were no differences in rehabilitation time/day between the two groups. Most of the values in the Middle group fell between those in the Low and High groups, though some values in the Middle group significantly differed from those in the Low group.

Univariate analyses showed that age ($r = -0.408$, $p < 0.01$), handgrip strength at admission ($r = 0.455$, $p < 0.01$), FOIS at admission ($r = 0.416$, $p < 0.01$), GNRI at admission ($r = 0.334$, $p < 0.01$), albumin at admission ($r = 0.322$, $p < 0.01$), BNP at admission ($r = -0.303$, $p < 0.01$), and provided rehabilitation time per day ($r = 0.291$, $p < 0.01$) were all significantly associated with REs. Multiple linear regression analysis revealed that age ($p < 0.05$), sex ($p < 0.05$), handgrip strength ($p < 0.01$), FOIS at admission ($p < 0.01$), provided rehabilitation time per day ($p < 0.01$), and BNP ($p < 0.05$) were all significantly associated with REs (Table 3).

We also analyzed the effect of heart failure stage according to the ACC/AHA guideline classification on REs. After controlling age and sex by ANCOVA, mean values of REs decreased significantly from the HF stage A to HF stage C ($P < 0.05$). According to age-specific HF stage classification, a significant difference was observed between HF stage A and HF stage B in patients < 83 years old group, but no difference among the groups in patients ≤ 83 years old (Fig 5).

Discussion

In the present study, we showed for the first time that heart failure status assessed using plasma BNP levels as an indicator negatively impacts ADL improvement through rehabilitation after hip fracture.

BNP is a hormone secreted by the heart, mainly from the ventricles. Plasma BNP levels increase in proportion to the severity of heart failure [14] and decrease when treatment improves a heart failure patient's condition. [15] Guidelines from the European Society of Cardiology and American College of Cardiology/American Heart Association recommend BNP measurement when diagnosing heart failure, as it well reflects the status of the disease at the time of the measurement [24,25]. Indeed, in this clinical setting, BNP is often superior to clinical judgement for diagnosing heart failure. [16,17] In the present study, we divided the participants into groups based on their plasma BNP concentration tertiles. The first tertile had median plasma BNP concentration of 22 pg/mL and an interquartile of 17–25 pg/mL, which is close to normal according to the BNP guidelines from the Japanese Society for Heart Failure. [26] Those guidelines also state that the plasma BNP concentrations in the second tertile (median: 52 pg/mL, interquartile: 42–65 pg/mL) indicate asymptomatic heart disease such as left ventricular hypertrophy, asymptomatic valvular heart disease, or ischemic heart disease, while the plasma BNP concentrations in the third tertile (median: 138 pg/mL, interquartile: 93–209 pg/mL) indicate latent heart failure. [26] In this study, we classified the patients into

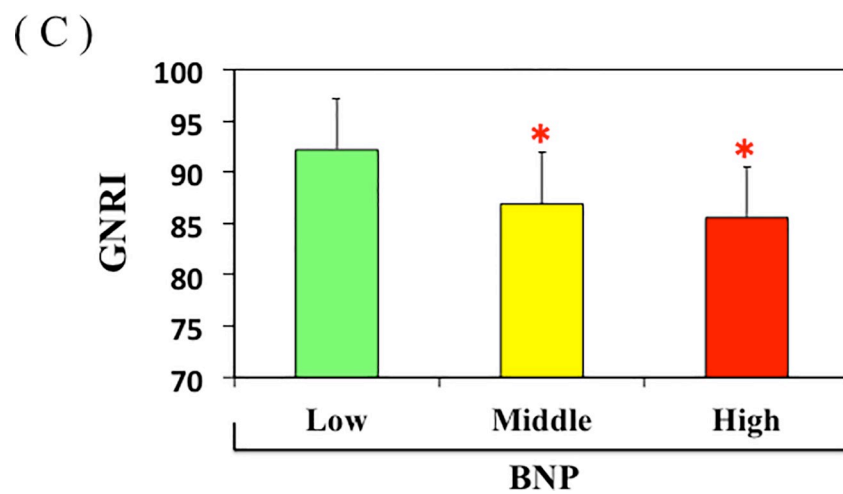
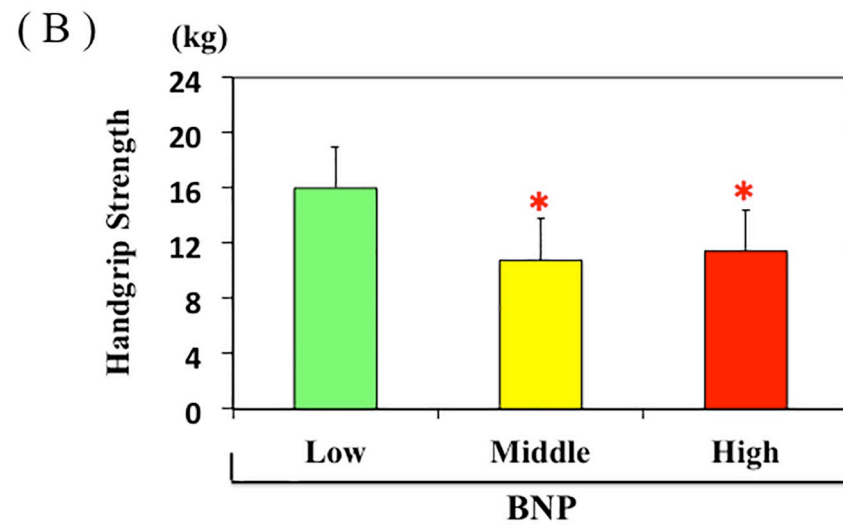
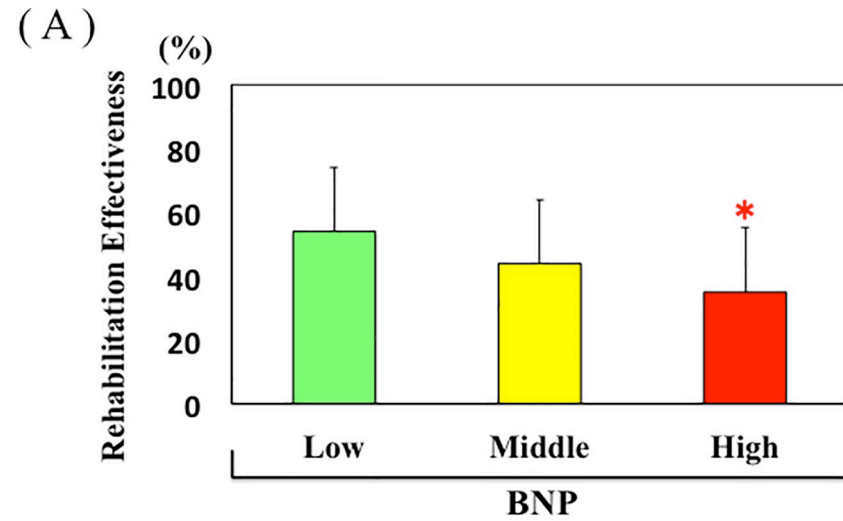


Fig 2. A, B, C. Rehabilitation effectiveness (A), handgrip strength (B), and GNRI (C) in the Low, Middle, and High plasma BNP groups. * $p < 0.05$ vs. Low plasma BNP group.

<https://doi.org/10.1371/journal.pone.0237387.g002>

heart failure stage classification according to ACC/AHA guideline, and we compared it with BNP tertile. The BNP Low group mainly consisted of stage A patients, the BNP Middle group mainly consisted of stage B patients, and the BNP High group mainly consisted of stage C patients. These results indicate that classification by BNP tertile well reflects the classification of heart failure stage by ACC/AHA guideline. These results suggest that about half of hip fracture patients have structural heart disease without symptom of heart failure and a quarter patients have symptomatic heart failure with structural heart disease. Thus, it is very important to catch the heart failure status based on plasma BNP levels on admission in patients with hip fracture to plan rehabilitation program.

An earlier study showed that dyspnea on mild exertion due to heart failure is a negative independent factor associated with rehabilitation outcome in patients with hip fracture. [27] Those authors suggest that the severe functional impairment caused by heart failure, but not the disease per se, is associated with rehabilitation outcome after hip fracture. Mathew et al. [12] also reported that maximum functional improvement occurs during the first 6 months after rehabilitation in a self-reporting heart failure group, and that this group had a lower level of recovery of transfer ability and locomotion than a group without disease. Itagaki et al. [13] recently reported that hip fracture patients with heart failure showed lower REs during hospitalization than those without heart failure, even after adjustment for confounding factors. These three studies appear to indicate that heart failure negatively affects the ADL improvement achieved through rehabilitation; however, the diagnosis of heart failure in the first two

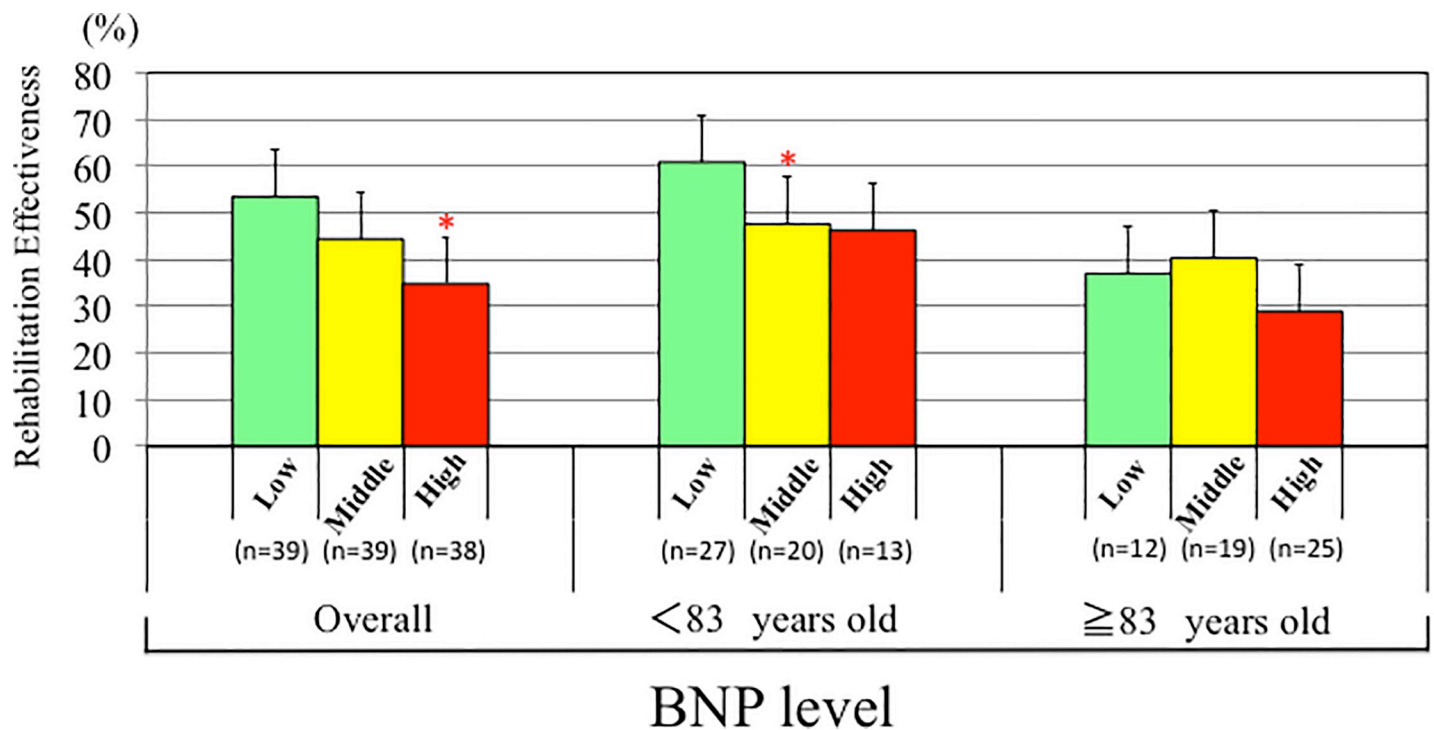


Fig 3. Distribution of REs values according to age-specific tertiles of plasma BNP levels overall, in patients <83 years old and patients ≥83 years old, respectively. * $p < 0.05$ vs. Low plasma BNP group.

<https://doi.org/10.1371/journal.pone.0237387.g003>

Table 2. Demographic and clinical data for each REs group.

Variable	Total (n = 116)	Low (n = 39)	Middle (n = 39)	High (n = 38)	P value
REs (%)	44.2 ± 26.4	15.2 ± 17.0	45.5 ± 6.1*	72.7 ± 10.7*†	< 0.01
BNP (pg/ml) mean ± SD	91 ± 139	151 ± 217	69 ± 61*	54 ± 48*	< 0.01
HF Stage, n (%)					
0	3 (2.6)	1 (2.6)	2 (5.2)	0 (0)	
A	24 (20.7)	9 (23.0)	6 (15.3)	9 (23.7)	0.86
B	56 (48.3)	10 (25.6)	23 (59.0)	23 (60.5)	< 0.01
C	33 (28.4)	19 (48.8)	8 (20.5)	6 (15.8)	< 0.01
D	0 (0)	0 (0)	0 (0)	0 (0)	
CTR (%)	55.8 ± 6.2	57.1 ± 7.1	55.3 ± 5.4	54.8 ± 6.0	0.24
Age (years)	82 ± 8	85 ± 8	81 ± 8*	78 ± 7*	< 0.01
Male, n, (%)	26 (22)	8 (21)	9 (23)	9 (24)	0.94
Period from injury to hospitalization (day)	26 ± 11	28 ± 12	25 ± 11	27 ± 10	0.40
Length of hospital stay (days)	75 ± 19	72 ± 21	79 ± 18	73 ± 16	0.16
Height (cm)	150.5 ± 9.6	146.4 ± 9.4	153.2 ± 9.1*	152.2 ± 9.1*	< 0.01
Weight at admission (kg)	46.4 ± 9.6	42.9 ± 9.0	47.1 ± 9.4	49.4 ± 9.3*	< 0.01
BMI at admission (kg/m ²)	20.4 ± 3.6	20.0 ± 3.4	20.1 ± 3.8	21.3 ± 3.7	0.23
Handgrip strength (kg)	11.9 ± 7.5	8.7 ± 5.2	13.2 ± 6.9*	16.6 ± 7.7*†	< 0.01
FOIS at admission	6.0 ± 1.1	5.4 ± 1.1	6.1 ± 1.1*	6.5 ± 0.6*	< 0.01
FIM at admission (score)					
Motor FIM	35 ± 13	29 ± 10	35 ± 14*	43 ± 12*†	< 0.01
Cognitive FIM	20 ± 7	15 ± 7	21 ± 5*	25 ± 5*†	< 0.01
Total FIM	56 ± 18	43 ± 15	56 ± 17*	68 ± 15*†	< 0.01
Provided energy (kcal/day)	1578 ± 213	1584 ± 219	1590 ± 201	1559 ± 222	0.80
Albumin at admission (mg/dl)	3.3 ± 0.6	3.2 ± 0.6	3.3 ± 0.5	3.5 ± 0.7*	< 0.05
GNRI at admission	88.2 ± 11.8	84.7 ± 10.8	87.8 ± 9.9	92.2 ± 13.5*	< 0.05
CHE at admission (IU/l)	204 ± 75	180 ± 57	204 ± 48	227 ± 58*	< 0.05
CRP at admission (mg/dl)	0.9 ± 1.5	1.2 ± 1.9	1.0 ± 1.8	0.4 ± 0.7	0.11
Hb at admission (g/dl)	10.9 ± 1.4	10.5 ± 1.4	10.7 ± 1.2	11.5 ± 1.7*†	< 0.01
Cre at admission (mg/dl)	0.8 ± 0.4	0.7 ± 0.3	0.8 ± 0.4	0.8 ± 0.5	0.31
eGFR at admission (mL/min/1.73 m ²)	68.1 ± 24.7	71.6 ± 23.9	68.6 ± 25.0	64.1 ± 25.4	0.41
Weight at discharge (kg)	46.9 ± 9.4	42.9 ± 8.0	48.1 ± 9.7*	49.7 ± 9.3*	< 0.01
BMI at discharge (kg/m ²)	20.6 ± 3.5	20.0 ± 3.2	20.5 ± 3.7	21.4 ± 3.6	0.23
FOIS at discharge	5.9 ± 1.2	5.2 ± 1.4	6.1 ± 1.0*	6.4 ± 0.7*	< 0.01
FIM at discharge (score)					
Motor FIM	61 ± 19	39 ± 14	64 ± 8*	79 ± 8*†	< 0.01
Cognitive FIM	23 ± 7	17 ± 6	24 ± 5*	30 ± 4*†	< 0.01
Total FIM	84 ± 26	56 ± 18	87 ± 11*	109 ± 9*†	< 0.01
Albumin at discharge (mg/dl)	3.4 ± 0.5	3.2 ± 0.5	3.5 ± 0.5*	3.5 ± 0.5*	< 0.01
GNRI at discharge	89.7 ± 11.4	85.3 ± 11.6	90.6 ± 10.9*	93.3 ± 10.5*	< 0.01
CHE at discharge (IU/l)	213 ± 57	193 ± 64	215 ± 51	231 ± 49*	< 0.05
CRP at discharge (mg/dl)	0.9 ± 2.1	1.5 ± 3.0	0.8 ± 1.2	0.5 ± 1.4*	0.12
Rehabilitation outcome					
Rehabilitation time/day (min)	120 ± 16	116 ± 18	122 ± 14	123 ± 13*	0.08
Motor FIM gain (score)	25 ± 14	11 ± 11	29 ± 8*	36 ± 8*†	< 0.01
Total FIM gain (score)	28 ± 16	12 ± 13	32 ± 8*	41 ± 9*†	< 0.01
Motor FIM effectiveness (%)	48.6 ± 28.3	17.7 ± 19.6	51.6 ± 8.9*	77.3 ± 12.3*†	< 0.01

(Continued)

Table 2. (Continued)

Variable	Total (n = 116)	Low (n = 39)	Middle (n = 39)	High (n = 38)	P value
Discharge to home (%)	62 (73/116)	31 (12/39)	67 (26/39)	89 (18/38)	< 0.01

Data are presented as the mean \pm standard deviation. Statistical analysis: one-way ANOVA with post-hoc Fisher's PLSD test. χ^2 -test. Significant Difference: $p < 0.05$ *) vs. the Low Group, †) vs. the Middle Group.

BMI = body mass index; BNP = B-type natriuretic peptide; CHE = cholinesterase; Cre = creatinine; CRP = plasma C-reactive protein; CTR = cardio thoracic ratio; eGFR = estimated glomerular filtration rate; FIM = functional independence measure; FOIS = functional oral intake scale; GNRI = geriatric nutritional risk index, Hb = hemoglobin; REs, rehabilitation effectiveness.

<https://doi.org/10.1371/journal.pone.0237387.t002>

studies was based on self-reported histories, and the diagnosis of heart failure in the third study was retrospectively confirmed based on medical records. Because heart failure conditions change daily [28] and often greatly improve with pharmacotherapy [29], the degree to which heart failure status actually affected changes in ADL is unclear in these studies.

In the present study, we divided patients into groups based on their plasma BNP levels on admission, which reflected their heart failure status at that time. Notably, the hip fracture patients in the highest plasma BNP tertile were older and scored lower in the handgrip strength test, cognitive FIM, hemoglobin, serum albumin, and GNRI than patients in the first tertile. Taken together, those results indicate that the hip fracture patients in the third plasma BNP tertile were older, had poorer cognition, poorer nutrition, and were more anemic than the patients in the first tertile. Moreover, the characteristics of the patients with third tertile plasma BNP appear to be consistent with the characteristics of elderly heart failure patients. [30] On the other hand, there was no difference in motor FIM at admission between the first and third tertile groups. This is likely due to the patients' inability to move immediately after hip fracture, irrespective of the presence of heart failure. Subsequently, however, as rehabilitation improved ADL, patients with high plasma BNP levels showed less improvement than those with low plasma BNP.

Increased left ventricular filling pressure is a fundamental hemodynamic abnormality in heart failure, and plasma BNP levels correlate well with left ventricular end-diastolic pressure and pulmonary capillary wedge pressure (PCWP) in patients with heart failure. [31] Recent studies also showed that during exercise, heart failure patients display higher PCWPs and pulmonary artery pressures, higher Borg perceived dyspnea scores, and increased ventilatory drive and respiratory rate than healthy controls. [32,33] Thus, exercise-induced altered hemodynamics, abnormal respiratory function, and dyspnea are characteristic of heart failure patients, and likely lead to reduced exercise endurance. Consequently, patients with hip fractures and heart failure defined by higher plasma BNP levels are unable to receive the same degree of rehabilitation as those without heart failure, which likely decreases ADL improvement.

We also divided patients into tertiles based on REs. We found that patients in whom REs was lower exhibited higher plasma BNP, older age, poorer handgrip strength, poorer nutrition, and poorer swallowing function—i.e., characteristics similar to those of patients in the third BNP tertile. In other words, REs appears to be lower in hip fracture patients with heart failure. That finding is consistent with our results showing that the effect of rehabilitation on ADL improvement was significantly blunted in the High BNP group as compared to the Low BNP group (Fig 4).

In addition to heart failure assessed based on plasma BNP levels, nutrition, age, swallowing function, handgrip strength, and gender were also related to REs in patients with hip fracture. Previously, Semel et al. [9] showed that younger age and female gender were significantly

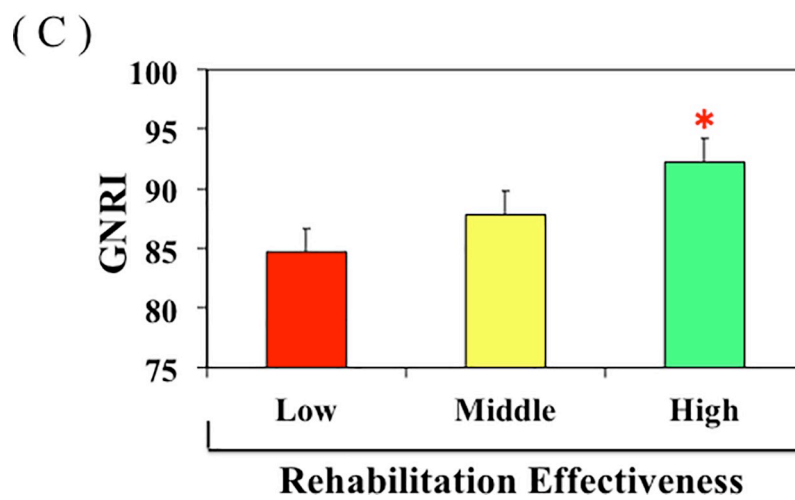
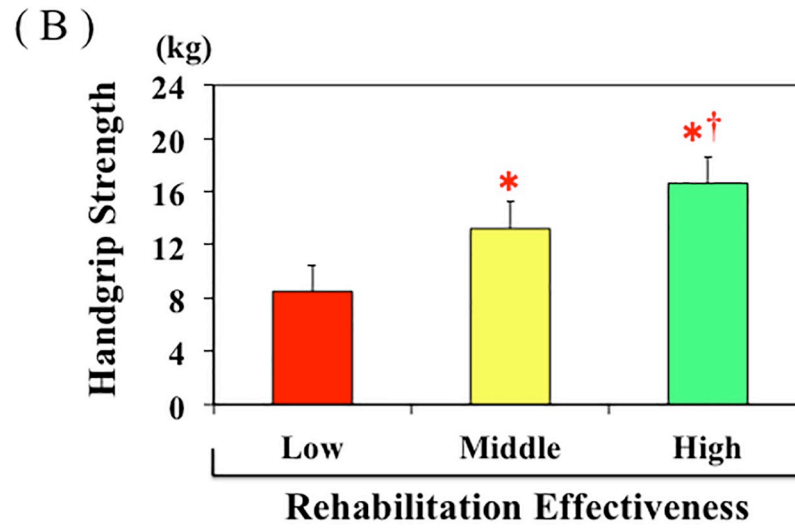
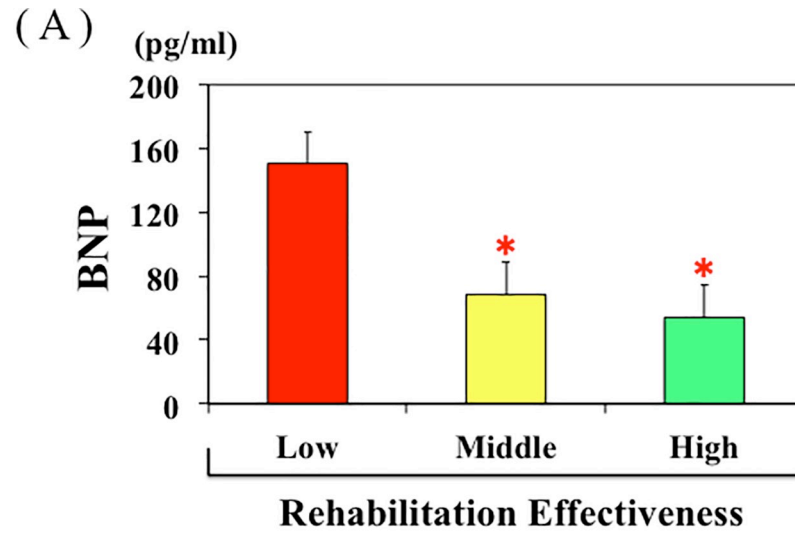


Fig 4. A, B, C. Plasma BNP levels (A), handgrip strength (B), and GNRI (C) in the Low, Middle, and High Res groups. * $p < 0.05$ vs. Low REs group, † $p < 0.05$ vs. Middle REs group.

<https://doi.org/10.1371/journal.pone.0237387.g004>

associated with length of stay efficiency, which was calculated as the FIM gain divided by the length of stay in patients with hip fracture. Inoue et al. [8] also reported that malnutrition status, as determined using MNA-SF, is a negative predictor of motor FIM gain in patients with hip fracture. Those findings are consistent with our present results, which is indicative of the validity of our patient cohort and the rehabilitation they were provided.

Limitations

The present study has several limitations. First, it was a single-center investigation performed in a limited number of patients. Therefore, our findings should be confirmed in a multicenter study with a larger number of patients. Second, the etiology of heart failure was not investigated. Among the elderly in Japan, ischemic heart disease, valvular heart disease and hypertension are the three major heart failure etiologies [34]. Because PCWP rises during exercise in patients with ischemic [35], valvular [36], or hypertensive [37] heart disease and its elevation limits rehabilitation, even if the distribution of etiologies changes, we think it would have little impact on the our results. Third, we showed a slight difference in the relationship between RE and BNP levels between patients under the age of 83 and those over the age of 83. Patients in the age group older than 83 tended to have lower REs in the high BNP group, but did not reach statistical significance. Poor statistical power may be the cause due to the small number of patients. A slight difference in the relationship between REs and stage of heart failure was also observed between patients under the age of 83 and those over the age of 83. Patients under the age of 83 tended to have lower REs in the high BNP group, but did not reach statistical significance. A large number of patient studies will be needed in the future to confirm the results of this study. Fourth, we did not mention the cardiac rehabilitation. However, exercise-based cardiac rehabilitation is an established, safe and effective intervention to improve physical functional performance, muscle strength, and quality of life and is associated with a reduction in heart failure hospitalization in stable heart failure patients [38]. Therefore, following rehabilitation of hip fracture and acquisition of walking ability, it is desirable to connect these patients to home-based cardiac rehabilitation [39].

Table 3. Multiple linear regression analysis for REs in 116 patients with hip fracture in convalescent rehabilitation wards in Japan using demographic, clinical, biochemical data.

	β	95% CI		P value
		Lower	Higher	
(Constant)	-0.017	-0.176	0.682	0.96
age	-0.19	-0.011	-0.001	<0.05
sex	-0.187	-0.23	-0.006	<0.05
Handgrip Strength	0.36	0.006	0.02	<0.01
FOIS at admission	0.244	0.02	0.098	<0.01
GNRI at admission	-0.022	-0.004	0.003	0.80
Hb at admission	0.056	-0.021	0.042	0.51
BNP at admission	-0.151	-0.001	< -0.001	<0.05
Rehabilitation time/day	0.208	0.021	0.123	<0.01

BNP = B-type natriuretic peptide; FOIS = functional oral intake scale; GNRI = geriatric nutritional risk index; Hb = hemoglobin.

<https://doi.org/10.1371/journal.pone.0237387.t003>

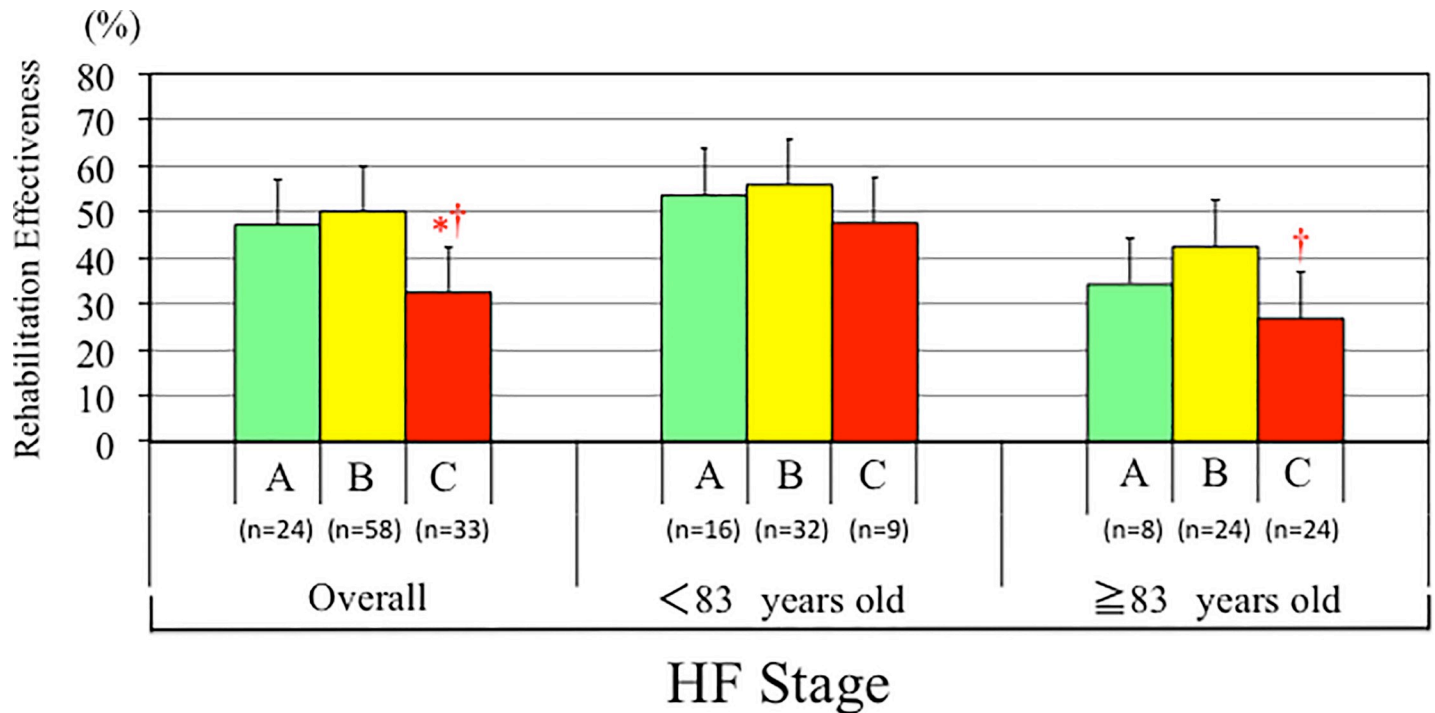


Fig 5. Distribution of REs values according to age-specific heart failure stage according to the ACC/AHA guideline classification overall, in patients <83 years old and patients \geq 83 years old, respectively. * $p < 0.05$ vs. HF Stage A group. † $p < 0.05$ vs. HF Stage B group.

<https://doi.org/10.1371/journal.pone.0237387.g005>

Conclusions

In this study, we investigated whether heart failure affects the ADL improvement in patients after hip fracture. Using plasma BNP on admission as an index of heart failure and dividing the patients into tertiles based on plasma BNP levels, we found that heart failure negatively impacts improvement of ADL during rehabilitation of patients with hip fracture. This BNP based classification well matches heart failure stage classification according to the ACC/AHA heart failure guideline.

Author Contributions

Conceptualization: Yusuke Tamamura, Sumiko Shiba, Toshio Nishikimi.

Data curation: Yusuke Tamamura, Michiko Matsuura, Sumiko Shiba.

Formal analysis: Yusuke Tamamura, Michiko Matsuura.

Funding acquisition: Yusuke Tamamura.

Investigation: Yusuke Tamamura, Sumiko Shiba.

Methodology: Yusuke Tamamura, Michiko Matsuura.

Project administration: Yusuke Tamamura, Toshio Nishikimi.

Resources: Toshio Nishikimi.

Software: Yusuke Tamamura.

Supervision: Toshio Nishikimi.

Validation: Toshio Nishikimi.

Visualization: Yusuke Tamamura.

Writing – original draft: Yusuke Tamamura, Toshio Nishikimi.

Writing – review & editing: Toshio Nishikimi.

References

1. Kanis JA, Odén A, McCloskey EV, Johansson H, Wahl DA, Cooper C; IOF Working Group on Epidemiology and Quality of Life. A systematic review of hip fracture incidence and probability of fracture worldwide. *Osteoporos Int*. 2012; 23:2239–2256. <https://doi.org/10.1007/s00198-012-1964-3> PMID: [22419370](https://pubmed.ncbi.nlm.nih.gov/22419370/)
2. Haentjens P, Magaziner J, Colón-Emeric CS, Vanderschueren D, Milisen K, Velkeniers B, et al. Meta-analysis: Excess mortality after hip fracture among older women and men. *Ann Intern Med*. 2010; 152:380–390. <https://doi.org/10.7326/0003-4819-152-6-201003160-00008> PMID: [20231569](https://pubmed.ncbi.nlm.nih.gov/20231569/)
3. Dyer SM, Crotty M, Fairhall N, Magaziner J, Beaupre LA, Cameron ID, et al. A critical review of the long-term disability outcomes following hip fracture. *BMC Geriatr*. 2016; 16: 158. <https://doi.org/10.1186/s12877-016-0332-0> PMID: [27590604](https://pubmed.ncbi.nlm.nih.gov/27590604/)
4. Ensrud KE. Epidemiology of fracture risk with advancing age. *J Gerontol Ser A Biol Sci Med Sci* 2013; 68:1236–42. <https://doi.org/10.1093/gerona/glt092> PMID: [23833201](https://pubmed.ncbi.nlm.nih.gov/23833201/)
5. Shyu YI, Chen MC, Liang J, Wu CC, Su JY. Predictors of functional recovery for hip fractured elders during 12 months following hospital discharge: a prospective study on a Taiwanese sample. *Osteoporos Int* 2004; 15:475–82. <https://doi.org/10.1007/s00198-003-1557-2> PMID: [15205719](https://pubmed.ncbi.nlm.nih.gov/15205719/)
6. Alegre-López J, Cordero-Guevara J, Alonso-Valdivielso JL, Fernández-Melón J. Factors associated with mortality and functional disability after hip fracture: an inception cohort study. *Osteoporos Int* 2005; 16:729–36. <https://doi.org/10.1007/s00198-004-1740-0> PMID: [15526089](https://pubmed.ncbi.nlm.nih.gov/15526089/)
7. Selakovic I, Dubljanin-Raspopovic E, Markovic-Denic L, Marusic V, Cirkovic A, Kadija M, et al. Can early assessment of hand grip strength in older hip fracture patients predict functional outcome? *PLoS One*. 2019; 14:e0213223. <https://doi.org/10.1371/journal.pone.0213223> PMID: [31369561](https://pubmed.ncbi.nlm.nih.gov/31369561/)
8. Inoue T, Misu S, Tanaka T, Sakamoto H, Iwata K, Chuman Y, et al. Pre-fracture nutritional status is predictive of functional status at discharge during the acute phase with hip fracture patients: A multicenter prospective cohort study. *Clin Nutr*. 2017; 36:1320–1325. <https://doi.org/10.1016/j.clnu.2016.08.021> PMID: [27612921](https://pubmed.ncbi.nlm.nih.gov/27612921/)
9. Semel J, Gray JM, Ahn HJ, Nasr H, Chen JJ. Predictors of outcome following hip fracture rehabilitation. *PM R*. 2010; 2:799–805. <https://doi.org/10.1016/j.pmrj.2010.04.019> PMID: [20869677](https://pubmed.ncbi.nlm.nih.gov/20869677/)
10. Okura Y, Ramadam MM, Ohno Y, Mitsuma W, Tanaka K, Ito M, et al: Impending epidemic: future projection of heart failure in Japan to year 2055. *Circ J* 72: 489–491, 2008. <https://doi.org/10.1253/circj.72.489> PMID: [18296852](https://pubmed.ncbi.nlm.nih.gov/18296852/)
11. Hamaguchi S, Kinugawa S, Goto D, Tsuchihashi-Makaya M, Yokota T, Yamada S, et al: Predictors of long-term adverse outcomes in elderly patients over 80 years hospitalized with heart failure.—A report from the Japanese Cardiac Registry of Heart Failure in Cardiology (JCARE-CARD)-. *Circ J*. 2011; 75:2403–10. <https://doi.org/10.1253/circj.cj-11-0267> PMID: [21778592](https://pubmed.ncbi.nlm.nih.gov/21778592/)
12. Mathew RO, Hsu WH, Young Y. Effect of comorbidity on functional recovery after hip fracture in the elderly. *Am J Phys Med Rehabil*. 2013; 92:686–96. <https://doi.org/10.1097/PHM.0b013e318282bc67> PMID: [23370578](https://pubmed.ncbi.nlm.nih.gov/23370578/)
13. Itagaki A, Kakizaki A, Funahashi M, Sato K, Yasuhara K, Ishikawa A.: Impact of heart failure on functional recovery after hip fracture. *J Phys Ther Sci*. 2019; 31:277–281 <https://doi.org/10.1589/jpts.31.277> PMID: [30936645](https://pubmed.ncbi.nlm.nih.gov/30936645/)
14. Nishikimi T, Kuwahara K, Nakao K. Current biochemistry, molecular biology, and clinical relevance of natriuretic peptides. *J Cardiol*. 2011; 57:131–40. <https://doi.org/10.1016/j.jcc.2011.01.002> PMID: [21296556](https://pubmed.ncbi.nlm.nih.gov/21296556/)
15. Troughton RW, Richards AM, Yandle TG, Frampton CM, Nicholls MG. The effects of medications on circulating levels of cardiac natriuretic peptides. *Ann Med*. 2007; 39:242–60. <https://doi.org/10.1080/07853890701232057> PMID: [17558597](https://pubmed.ncbi.nlm.nih.gov/17558597/)
16. Morrison LK, Harrison A, Krishnaswamy P, Kazanegra R, Clopton P, Maisel A. Utility of a rapid B-natriuretic peptide assay in differentiating congestive heart failure from lung disease in patients presenting with dyspnea. *J Am Coll Cardiol*. 2002 Jan 16; 39:202–9. [https://doi.org/10.1016/s0735-1097\(01\)01744-2](https://doi.org/10.1016/s0735-1097(01)01744-2) PMID: [11788208](https://pubmed.ncbi.nlm.nih.gov/11788208/)

17. McCullough PA, Nowak RM, McCord J, Hollander JE, Herrmann HC, Steg PG, et al. B-type natriuretic peptide and clinical judgment in emergency diagnosis of heart failure: analysis from Breathing Not Properly (BNP) Multinational Study. *Circulation*. 2002 Jul 23; 106:416–22. <https://doi.org/10.1161/01.cir.0000025242.79963.4c> PMID: 12135939
18. Nishioka S, Wakabayashi H, Momosaki R. Nutritional Status Changes and Activities of Daily Living after Hip Fracture in Convalescent Rehabilitation Units: A Retrospective Observational Cohort Study from the Japan Rehabilitation Nutrition Database. *J Acad Nutr Diet*. 2018; 118:1270–1276. <https://doi.org/10.1016/j.jand.2018.02.012> PMID: 29752190
19. Ottenbacher KJ, Hsu Y, Granger CV, Fiedler RC. The reliability of the functional independence measure: a quantitative review. *Arch Phys Med Rehabil* 1996; 77: 1226–32. [https://doi.org/10.1016/s0003-9993\(96\)90184-7](https://doi.org/10.1016/s0003-9993(96)90184-7) PMID: 8976303
20. Hunt SA, Abraham WT, Chin MH, Feldman AM, Francis GS, Ganiats TG, et al. 2009 Focused update incorporated into the ACC/AHA 2005 Guidelines for the Diagnosis and Management of Heart Failure in Adults A Report of the American College of Cardiology Foundation/American Heart Association Task Force on Practice Guidelines Developed in Collaboration With the International Society for Heart and Lung Transplantation. *J Am Coll Cardiol*. 2009 Apr 14; 53:e1–e90. <https://doi.org/10.1016/j.jacc.2008.11.013> PMID: 19358937
21. Nishikimi T, Okamoto H, Nakamura M, Ogawa N, Horii K, Nagata K, et al. Direct immunochemiluminescent assay for proBNP and total BNP in human plasma proBNP and total BNP levels in normal and heart failure. *PLoS One*. 2013; 8:e53233. <https://doi.org/10.1371/journal.pone.0053233> PMID: 23365636
22. Heinemann AW, Roth EJ, Cichowski K, Betts HB. Multivariate analysis of improvement and outcome following stroke rehabilitation. *Arch Neurol* 1987; 44:1167–72. <https://doi.org/10.1001/archneur.1987.00520230051013> PMID: 3675249
23. Koh GC, Chen CH, Petrella R, Thind A. Rehabilitation impact indices and their independent predictors: a systematic review. *BMJ Open*. 2013 Sep 24; 3:e003483. <https://doi.org/10.1136/bmjopen-2013-003483> PMID: 24068767
24. Ponikowski P, Voors AA, Anker SD, Bueno H, Cleland JGF, Coats AJS, et al. 2016 ESC Guidelines for the diagnosis and treatment of acute and chronic heart failure: The Task Force for the diagnosis and treatment of acute and chronic heart failure of the European Society of Cardiology (ESC) Developed with the special contribution of the Heart Failure Association (HFA) of the ESC. *Eur Heart J*. 2016; 37:2129–2200. <https://doi.org/10.1093/eurheartj/ehw128> PMID: 27206819
25. Yancy CW, Jessup M, Bozkurt B, Butler J, Casey DE Jr, Colvin MM, et al. 2017 ACC/AHA/HFSA Focused Update of the 2013 ACCF/AHA Guideline for the Management of Heart Failure: A Report of the American College of Cardiology/American Heart Association Task Force on Clinical Practice Guidelines and the Heart Failure Society of America. *J Am Coll Cardiol*. 2017; 70:776–803. <https://doi.org/10.1016/j.jacc.2017.04.025> PMID: 28461007
26. http://www.asas.or.jp/jhfs/english/outline/guidelines_20180822.html.
27. Lieberman D, Friger M, Lieberman D. Inpatient rehabilitation outcome after hip fracture surgery in elderly patients: a prospective cohort study of 946 patients. *Arch Phys Med Rehabil*. 2006; 87:167–71. <https://doi.org/10.1016/j.apmr.2005.10.002> PMID: 16442967
28. Maisel A, Barnard D, Jaski B, Frivold G, Marais J, Azer M, et al. Primary results of the HABIT Trial (heart failure assessment with BNP in the home). *J Am Coll Cardiol*. 2013; 61:1726–35. <https://doi.org/10.1016/j.jacc.2013.01.052> PMID: 23500322
29. Rossignol P, Hernandez AF, Solomon SD, Zannad F. Heart failure drug treatment. *Lancet*. 2019; 393:1034–1044. [https://doi.org/10.1016/S0140-6736\(18\)31808-7](https://doi.org/10.1016/S0140-6736(18)31808-7) PMID: 30860029
30. Kinugasa Y, Yamamoto K. The challenge of frailty and sarcopenia in heart failure with preserved ejection fraction. *Heart*. 2017; 103:184–189. <https://doi.org/10.1136/heartjnl-2016-309995> PMID: 27940967
31. Yasue H, Yoshimura M, Sumida H, Kikuta K, Kugiyama K, Jougasaki M, et al. Localization and mechanism of secretion of B-type natriuretic peptide in comparison with those of A-type natriuretic peptide in normal subjects and patients with heart failure. *Circulation*. 1994; 90:195–203. <https://doi.org/10.1161/01.cir.90.1.195> PMID: 8025996
32. Obokata M, Olson TP, Reddy YNV, Melenovsky V, Kane GC, Borlaug BA. Haemodynamics, dyspnoea, and pulmonary reserve in heart failure with preserved ejection fraction. *Eur Heart J*. 2018 7; 39:2810–2821. <https://doi.org/10.1093/eurheartj/ehy268> PMID: 29788047
33. Reddy YNV, Obokata M, Wiley B, Koepp KE, Jorgenson CC, Egbe A, et al. The haemodynamic basis of lung congestion during exercise in heart failure with preserved ejection fraction. *Eur Heart J*. 2019; 40:3721–3730. <https://doi.org/10.1093/eurheartj/ehz713> PMID: 31609443
34. Shiba N, Nochioka K, Miura M, Kohno H, Shimokawa H; CHART-2 Investigators.; CHART-2 Investigators. Trend of westernization of etiology and clinical characteristics of heart failure patients in Japan—

- first report from the CHART-2 study. *Circ J* 2011; 75: 823–833. <https://doi.org/10.1253/circj.cj-11-0135> PMID: 21436596
35. Nishikimi T, Kohno M, Itagane H, Hirota K, Akioka K, Teragaki M, et al. Influence of exercise on plasma atrial natriuretic factor levels in patients with myocardial infarction. *Am Heart J*. 1988; 115:753–60. [https://doi.org/10.1016/0002-8703\(88\)90875-7](https://doi.org/10.1016/0002-8703(88)90875-7) PMID: 2965499
 36. Nishikimi T, Kohno M, Matsuura T, Akioka K, Teragaki M, Yasuda M, et al. Effect of exercise on circulating atrial natriuretic polypeptide in valvular heart disease. *Am J Cardiol*. 1986; 58:1119–20. [https://doi.org/10.1016/0002-9149\(86\)90131-1](https://doi.org/10.1016/0002-9149(86)90131-1) PMID: 2946217
 37. Nishikimi T, Kohno M, Matsuura T, Kanayama Y, Akioka K, Teragaki M, et al. Circulating atrial natriuretic polypeptide during exercise in patients with essential hypertension. *J Hypertens Suppl*. 1986; 4: S546–9. PMID: 2956390
 38. Haykowsky MJ, Daniel KM, Bhella PS, Sarma S, Kitzman DW. Heart Failure: Exercise-Based Cardiac Rehabilitation: Who, When, and How Intense? *Can J Cardiol*. 2016; 32: S382–S387. <https://doi.org/10.1016/j.cjca.2016.06.001> PMID: 27692119
 39. Zwisler AD, Norton RJ, Dean SG, Dalal H, Tang LH, Wingham J, Taylor RS. Home-based cardiac rehabilitation for people with heart failure: A systematic review and meta-analysis. *Int J Cardiol*. 2016; 221:963–969. <https://doi.org/10.1016/j.ijcard.2016.06.207> PMID: 27441476