



Contents lists available at ScienceDirect

Indian Pacing and Electrophysiology Journal

journal homepage: www.elsevier.com/locate/IPEJ

Incidence and impact of cardiac arrhythmias in coronavirus disease 2019 (COVID-19): A systematic review and meta-analysis

Raymond Pranata^{a,*}, Ian Huang^{a,c}, Sunu Budhi Raharjo^b^a Faculty of Medicine, Universitas Pelita Harapan, Tangerang, Indonesia^b Department of Cardiology and Vascular Medicine Faculty of Medicine Universitas Indonesia, National Cardiovascular Center Harapan Kita, Jakarta, Indonesia^c Department of Internal Medicine, Faculty of Medicine, Universitas Padjadjaran, Hasan Sadikin General Hospital, Bandung, Indonesia

ARTICLE INFO

Article history:

Received 28 June 2020

Received in revised form

17 July 2020

Accepted 10 August 2020

Available online 16 August 2020

Keywords:

Arrhythmia
Cardiovascular
Coronavirus
COVID-19
Rhythm
SARS-CoV-2

ABSTRACT

Background: Studies have shown that cardiac arrhythmias may occur in up to 44% of patients with severe coronavirus disease 2019 (COVID-19) and has been associated with an increased risk of death. This systematic review and meta-analysis aimed to evaluate the incidence of cardiac arrhythmias in patients with COVID-19 and their implications on patient prognosis.

Methods: We performed a systematic literature search from PubMed, SCOPUS, Europe PMC, Cochrane Central Databases, and Google Scholar + Preprint Servers. The primary endpoint of the study was poor outcomes including mortality, severe COVID-19, and the need for ICU care.

Results: A total of 4 studies including 784 patients were analyzed. The incidence of arrhythmia in patients with COVID-19 was 19% (9–28%; I^2 : 91.45). Arrhythmia occurred in 48% (38–57%; I^2 : 48.08) of patients with poor outcome and 6% (1–12%; I^2 : 85.33%) of patients without poor outcome. Patients with COVID-19 experiencing arrhythmia had an increased risk of poor outcome (RR 7.96 [3.77, 16.81], $p < 0.001$; I^2 : 71.1%). The funnel-plot analysis showed an asymmetrical funnel plot with most of the studies on the right side of the effect estimate. The regression-based Egger's test showed indication of small-study effects ($p = 0.001$).

Conclusion: Cardiac arrhythmias were significantly associated with an increased risk of poor outcome in COVID-19. Arrhythmias were observed in 19% of patients with COVID-19 and in 48% of patients with COVID-19 and poor outcomes.

Copyright © 2020, Indian Heart Rhythm Society. Production and hosting by Elsevier B.V. This is an open access article under the CC BY-NC-ND license (<http://creativecommons.org/licenses/by-nc-nd/4.0/>).

1. Introduction

Coronavirus disease 2019 (COVID-19) was declared pandemic, and at the time this paper was written, it has infected more than 4.7 million people and caused more than 300,000 deaths [1]. Even though most of the infected patients have mild or no symptoms, some of them develop severe pneumonia, acute respiratory distress syndrome, multi-organ failure, and death. Factors such as age, smoking, diabetes, hypertension, and cardiovascular diseases are associated with severity and mortality in patients with COVID-19 [2–6]. Previously, influenza epidemics have been shown to be associated with an increased risk of ventricular arrhythmia in

patients with implantable cardiac defibrillators [8], indicating that respiratory-borne infections might also be related to cardiovascular manifestations.

Severe acute respiratory syndrome coronavirus 2 (SARS-CoV-2) has been shown to cause cardiac injury and cytokine storm, which may lead to cardiac arrhythmias [9,10]. A study has shown that cardiac arrhythmias may occur in up to 44% of patients with severe COVID-19 [11], and has been associated with an increased risk of death [12]. This systematic review and meta-analysis aimed to evaluate the incidence of cardiac arrhythmias in patients with COVID-19 and their implications on patient prognosis.

* Corresponding author.

E-mail addresses: raymond_pranata@hotmail.com, raymond_pranata@hotmail.com (R. Pranata), ianhuang2108@gmail.com (I. Huang), sunu.b.raharjo@gmail.com (S.B. Raharjo).

Peer review under responsibility of Indian Heart Rhythm Society.

2. Methods

2.1. Eligibility criteria

This systematic review and meta-analysis included research articles on adult COVID-19 patients that contain information on arrhythmia as a complication and contain a clinically validated definition of severe COVID-19, death, or intensive care unit (ICU) care. We excluded articles other than original research articles (e.g., review articles, non-research letters, or editorial/commentaries), studies with a sample of less than 20 or case reports, non-English language articles, and pediatric populations (age of 17 years old or younger).

2.2. Search strategy and study selection

We systematically searched PubMed, SCOPUS, Europe PMC, Cochrane Central Databases, and Google Scholar + Preprint Servers with the search terms 1) "COVID-19" OR "SARS-CoV-2" AND "Characteristics" 2) "COVID-19" OR "SARS-CoV-2" AND "Arrhythmia". Duplicate results were removed. The remaining articles were independently screened by two authors (I. H. and R. P.) for the relevance of their abstracts. The full text of the remaining articles was assessed applying the inclusion and exclusion criteria. The search was finalized on April 14, 2020. The study was conducted in accordance with the Preferred Reporting Items for Systematic Reviews and Meta-Analyses (PRISMA) guidelines.

2.3. Data extraction

Data extraction was performed independently by two of the authors (I. H. and R. P.). We used standardized extraction forms that included author, year, study design, age, sex, cardiovascular diseases, history of hypertension and diabetes mellitus, respiratory comorbidities, antibiotics and antiviral use, glucocorticoid use, lymphopenia, follow-up duration, arrhythmia, mortality, ICU care, and severe COVID-19. The quality and risk of bias assessment of the included studies will be performed using the Newcastle-Ottawa Scale.

The primary endpoint of the study was poor outcome, including mortality, severe COVID-19, and the need for ICU care. Severe COVID-19 was defined as patients who had any of the following features at the time of admission or after admission: (1) respiratory distress (≥ 30 breaths per min); (2) oxygen saturation at rest $\leq 93\%$; (3) ratio of partial pressure of arterial oxygen (PaO_2) to fractional concentration of oxygen inspired air (fiO_2) ≤ 300 mmHg; or (4) critical complication (respiratory failure, septic shock, and multiple organ dysfunction/failure) [13].

2.4. Statistical analysis

The meta-analysis of the included studies was performed using STATA 16.0 (StataCorp LLC, Texas, US). Meta-analysis of proportions was used to pool the incidence of arrhythmia in the groups. Dichotomous variables were calculated to obtain risk ratios (RRs) along with their 95% confidence intervals (CIs). Random effect models were used regardless of heterogeneity. The p-values were two-tailed and statistical significance was set at ≤ 0.05 . A sensitivity analysis by leave-one-out was performed to test the robustness of the findings. To assess the small-study effect, we performed a regression-based Egger's test. Random-effects meta-regression was performed for gender, hypertension, diabetes, cardiovascular diseases, cerebrovascular diseases, respiratory comorbidities, and lymphopenia.

3. Results

3.1. Study selection

We found 817 records and 509 remained after the removal of duplicates. A total of 461 records were excluded after screening the titles and abstracts. After assessing 48 articles for eligibility, we excluded 44 because of the following conditions: 1) there were no data on arrhythmia as complication ($n = 43$), and 2) arrhythmia was the baseline comorbidity, not an outcome ($n = 1$). As a result, 4 studies remained for qualitative synthesis and meta-analysis (Fig. 1). There were 784 patients from the 4 studies [11,12,14,15].

3.2. Baseline characteristics

Baseline characteristics is displayed in Tables 1 and 2. Meta-analysis of baseline characteristics showed that male (RR 1.28 [1.06, 1.56], $p = 0.01$; $I^2: 49\%$, $p = 0.12$), hypertension (RR 2.38 [1.61, 3.51], $p < 0.001$; $I^2: 69\%$, $p = 0.02$), diabetes (RR 2.60 [1.47, 4.61], $p = 0.001$; $I^2: 45\%$, $p = 0.14$), cardiovascular diseases (RR 3.51 [2.28, 5.42], $p < 0.001$; $I^2: 0\%$, $p = 0.55$), and respiratory comorbidities (RR 4.90 [2.12, 11.29], $p < 0.001$; $I^2: 0\%$, $p = 0.75$) were associated with poor outcome in this pooled analysis. Cerebrovascular diseases (RR 3.78 [0.72, 19.88], $p = 0.12$; $I^2: 81\%$, $p = 0.001$) was not associated with poor outcome.

3.3. Arrhythmia incidence

The incidence of arrhythmia in patients with COVID-19 was 19% (9–28%; $I^2: 91.45$, $p < 0.001$) (Fig. 2A). Arrhythmia occurred in 48% (38–57%; $I^2: 48.08$, $p = 0.12$) of patients with poor outcome (Figs. 2B) and 6% (1–12%; $I^2: 85.33\%$) of patients without poor outcome (Fig. 2C).

3.4. Arrhythmia and outcome of the COVID-19

Patients with COVID-19 experiencing arrhythmia had an increased risk of poor outcome (RR 7.96 [3.77, 16.81], $p < 0.001$; $I^2: 71.1\%$, $p = 0.02$) (Fig. 3). Sensitivity analysis removing the study of Zhang Guqin et al. showed the statistical robustness of the effect estimate (RR 5.83 [3.26, 10.42], $p < 0.001$; $I^2: 54\%$, $p = 0.11$).

3.5. Meta-regression

The association between arrhythmia and outcome in patients with COVID-19 did not vary significantly with age ($p = 0.840$), male ($p = 0.220$), hypertension ($p = 0.977$), cardiovascular diseases ($p = 0.848$), diabetes ($p = 0.139$), respiratory comorbidities ($p = 0.729$), and lymphopenia ($p = 0.084$).

3.6. Publication bias

The funnel-plot analysis showed an asymmetrical funnel plot with most of the studies on the right side of the effect estimate (Fig. 4). Regression-based Egger's test showed indication of small-study effects ($p = 0.001$).

4. Discussion

This meta-analysis showed that the incidence of arrhythmia was significantly higher in patients with poor outcomes, hence a marker of poor prognosis.

Cardiac arrhythmias occurred frequently in patients with COVID-19, and the percentage was even higher in those with poor outcomes. However, this topic remains to be explored and

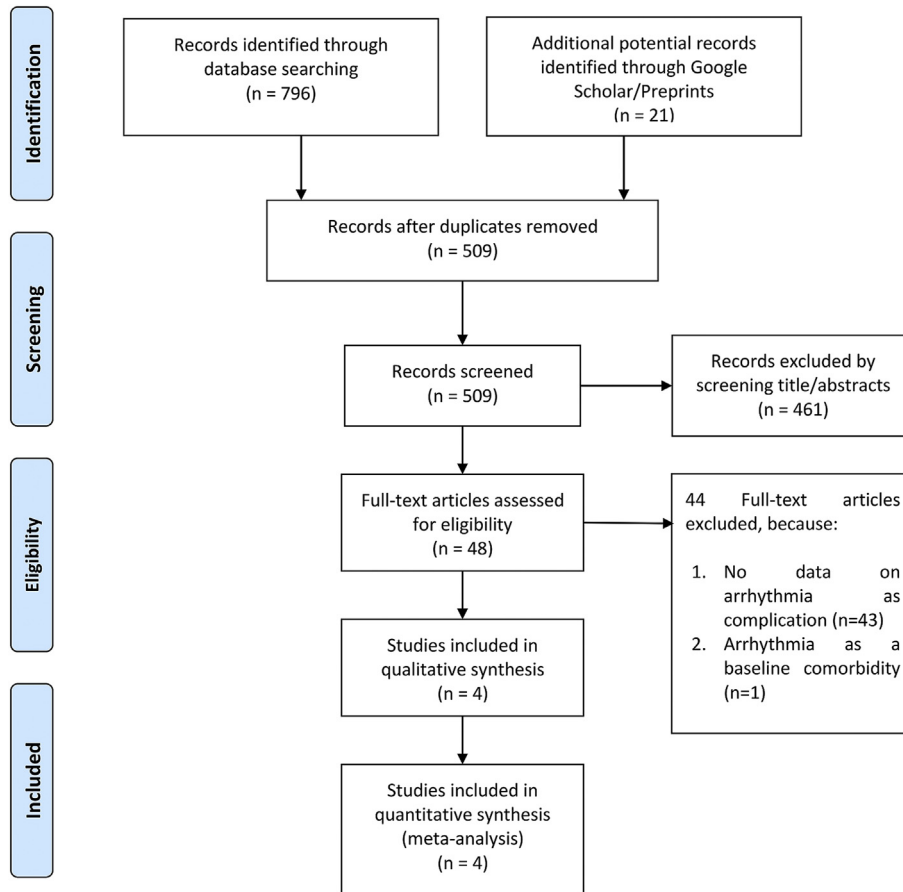


Fig. 1. Prisma flowchart.

Table 1

Characteristics of the included studies. Data in the table were arranged as total patients/prevalence (poor outcome group vs. without poor outcome group).

Authors	Study Design	Samples	Overall Age (Mean/Median) (years)	Male (%)	Hypertension (%)	Cardiovascular Comorbidities (%)	Diabetes (%)	Respiratory Comorbidities (%)	Hs-troponin I on Admission
Cao J 2020	Observational	102 (17/85)	54 (72 vs. 53)	52 (76.5 vs. 47.1)	27.5 (64.7 vs. 20)	4.9 (17.6 vs. 2.4)	10.8 (35.3 vs. 5.9)	9.8 (23.5 vs. 7.1)	7.6 (Overall)
Hu L 2020	Observational	323 (172/151)	61 (65 vs. 56)	51.4 (52.9 vs. 49.7)	32.5 (38.3 vs. 25.8)	12.7 (19.2 vs. 5.3)	14.6 (19.2 vs. 9.3)	1.9 (3.5 vs. 0)	Mean/Median was not reported
Zhang Guqin 2020	Observational	221 (55/166)	55 (62 vs. 51)	48.9 (63.6 vs. 44.0)	24.4 (47.3 vs. 16.9)	10 (23.6 vs. 5.4)	10 (12.7 vs. 9.0)	2.7 (7.3 vs. 1.2)	Mean/Median was not reported
Wang Dawei 2020	Observational	138 (36 vs. 102)	56 (66 vs. 51)	54.3 (61.1 vs. 52.0)	31.2 (58.3 vs. 21.6)	14.5 (25 vs. 10.8)	10.1 (22.2 vs. 5.9)	2.9 (8.3 vs. 1.0)	6.4 (11 vs. 5.1)

currently, the included studies did not specify the types of arrhythmia. Hence, the specific types of arrhythmia that increase mortality and severity of COVID-19 remain inconclusive.

Defining the types of arrhythmia in patients with COVID-19 is important because of the frequent incidence and is strongly associated with poor prognosis. Providing details on the type of arrhythmia may help clinicians to discriminate the prognostic significance of the arrhythmia, allowing more precise risk stratification. Several baseline characteristics are also associated with poor outcome in this pooled studies. These factors include gender, hypertension, diabetes, cardiovascular diseases, and respiratory comorbidities which is accordance to our previous meta-analyses assessing these factors [2–7]. We performed meta-regression and found that the association between arrhythmia and poor outcome

did not varied with the gender and other comorbidities, nevertheless the number of studies <10.

Arrhythmia may be attributed to metabolic disarray, hypoxia, inflammation, or neurohormonal stress associated with SARS-CoV-2 infection [16]. Furthermore, COVID-19 induced coagulopathy may cause thrombosis leading to hypoxia [17,18]. Additionally, which patients often present electrolyte abnormalities that may precipitate/exacerbate cardiac arrhythmias [19]. SARS-CoV-2 itself has been shown to cause cardiac injury signified by increase in cardiac biomarkers [20,21]. After activation of the viral surface spike (S) protein of SARS-CoV-2 by the transmembrane protease serine 2 (TMPRSS2), the virus binds to angiotensin-converting enzyme 2 (ACE2) [22,23], which has high affinity to the human receptor [24,25]. The aforementioned enzyme is highly expressed in cardiac

Table 2
Characteristics of the included studies. Data in the table were arranged as total patients/prevalence (poor outcome group vs. without poor outcome group).

Authors	Outcome	NOS	Mean Follow-up Duration	Antiviral Use (%)	Antibiotics Use (%)	Glucocorticoid Use (%)
Cao J 2020	Mortality	7	28 days Mean Duration: Not Reported Sample: January 3, 2020 to February 15, 2020 Followed up to: February 15, 2020	100 vs 97.6 Arbidol: 5.9 vs. 37.6 Oseltamivir: 82.4 vs. 61.2 Lopinavir + Ritonavir: 23.5 vs. 28.2	100 vs. 98.8	Methylprednisolone: 64.7 vs 47.1
Hu L 2020	Severe COVID-19	7	28 days Mean Duration: Not Reported Sample: January 8, 2020 to February 20, 2020 Followed up to: March 10, 2020	Oseltamivir: 67.4 vs 72.2 Ganciclovir: 68.0 vs 74.8 Arbidol: 63.4 vs 65.6 Kaletra: 13.4 vs 3.3 Interferon-alpha: 8.1 vs 5.3	93.6 vs. 94.7	63.4 vs. 57.6
Zhang Guqin 2020	Severe COVID-19	7	Mean Duration: Not Reported Sample: January 2, 2020 to February 10, 2020 Followed up to: February 15, 2020	90.9 vs 88	Not Reported	72.7 vs 45.2
Wang Dawei 2020	Intensive Care Unit	7	Mean Duration: Not Reported Sample: January 1, 2020 to January 28, 2020 Followed up to: February 3, 2020	90 (Overall)	100 (Overall)	Methylprednisolone: 45 (Overall)

NOS: Newcastle-Ottawa Scale.

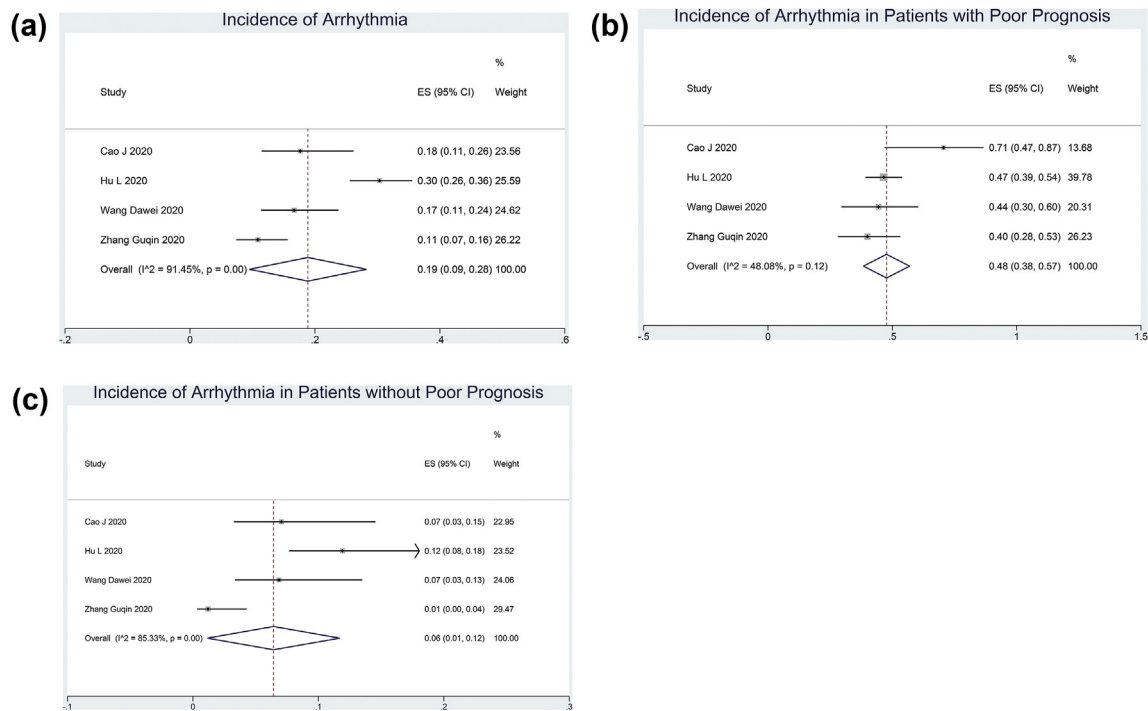


Fig. 2. Incidence of arrhythmia in COVID-19 patients with COVID 19. The incidence of arrhythmia is 19% (A). Arrhythmia occurs in 48% (B) of the patients with poor outcomes and 6% (C) of the patients without poor outcomes.

pericytes [26], infection, and subsequent immune response may cause damage to the heart. Myocardial inflammation, ion channel dysfunction, electrophysiological and structural remodeling associated with viral myocarditis has been shown to cause life-threatening arrhythmias [27]. Evidence shows that the rise of troponin is accompanied by increased inflammatory biomarkers, indicating the possible role of cytokine storm in cardiac injury [28]. Systemic inflammation has been shown to prolong ventricular action potential duration through disturbance of the potassium channel [29]. Interleukin-6, tumor necrosis factor alpha, and interleukin-1 may prolong the action potential duration through interplay with cardiomyocytes ion channels [30]. Elevated interleukin-6 during systemic inflammation may cause QT

prolongation, which increases the risk for torsades de pointes [31]. Furthermore, QT-prolonging drugs are frequently used in the management of COVID-19, synergistically amplifying the risk of cardiac arrhythmias. Drugs such as azithromycin and hydroxychloroquine are associated with QT prolongation [32,33]. Azithromycin is known to prolong the QT interval [34] and increase the risk of cardiovascular death [35]. The anti-malarial chloroquine is associated with prolonged QT interval with or without azithromycin according to a randomized controlled trial from the Pfizer Labs [36]. Moreover, lopinavir-ritonavir, a combination of drugs commonly known as protease inhibitors (PI) and usually used as 2nd-line drugs in treating HIV infection, is also recognized as arrhythmogenic and can prolong the QT interval [37,38].

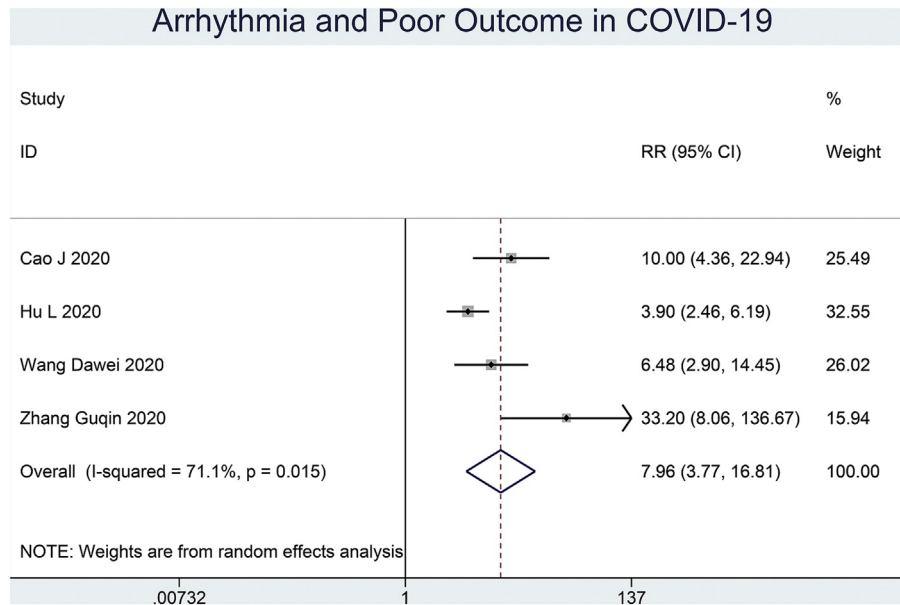


Fig. 3. Arrhythmia and outcome of COVID-19. Patients with COVID-19 experiencing arrhythmia have an increased risk of poor outcome.

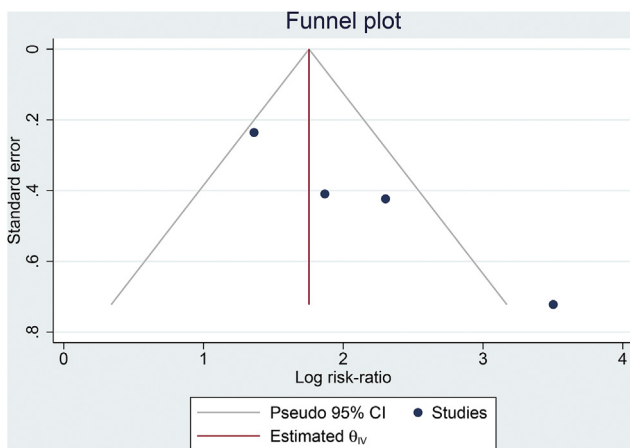


Fig. 4. Publication bias. The funnel-plot analysis shows an asymmetrical funnel plot with most of the studies on the right side of the effect estimate.

Interestingly, Hu et al. reported that these drugs are associated with severe COVID-19, thus potentially affecting the association between arrhythmia and severe COVID-19 [15]. A risk score developed by Tisdale et al. may be used to predict patients at risk for QTc interval prolongation [39]. This score may be used to guide treatment choices for patients with COVID-19.

4.1. Limitations

This systematic review and meta-analysis has several limitations. First, the types of cardiac arrhythmias were not described in the included studies. Second, the risk of publication bias was high, as indicated by the asymmetrical funnel plot analysis and statistically significant Egger's test. Third, most of the studies are from China and may not be generalizable to other populations. Fourth, the number of studies were limited and not divided into arrhythmias versus non-arrhythmias; hence, we were not able to assess the risk factors for cardiac arrhythmias in these patients. Fifth, the studies did not report the level of electrolytes. Sixth, the studies

were mostly retrospective. The predictive power of meta-regression analysis is weaker if the number of studies are <10. Nevertheless, this study emphasizes the clinical importance of arrhythmia in patients with COVID-19, and further studies should explore cardiac arrhythmias in these patients.

5. Conclusion

Cardiac arrhythmias were significantly associated with an increased risk of poor outcome in COVID-19. Arrhythmias were observed in 19% of patients with COVID-19 and in 48% of patients with poor outcomes.

Authors contribution

R. P. conceived and designed the study and drafted the manuscript. R. P. and I. H. acquired the data and drafted the manuscript. R. P. and I. H. performed the data extraction. R. P., I. H., and S. B. R. interpreted the data and performed extensive research on the topic. S. B. R. reviewed and performed extensive editing of the manuscript. All authors contributed to the writing of the manuscript. R. P. performed the statistical analysis.

Funding

None.

Declaration of competing interest

Authors declare no Conflict of Interests for this article.

Acknowledgement

None.

References

- [1] World Health Organization. Coronavirus disease 2019 (COVID-19) Situation Report – 95. 2020.
- [2] Huang I, Lim MA, Pranata R. Diabetes mellitus is associated with increased

- mortality and severity of disease in COVID-19 pneumonia – a systematic review, meta-analysis, and meta-regression. *Diabetes Metab Syndr Clin Res Rev* 2020;14:395–403. <https://doi.org/10.1016/j.dsx.2020.04.018>.
- [3] Pranata R, Huang I, Lim MA, Wahjoepramono EJ, July J. Impact of cerebrovascular and cardiovascular diseases on mortality and severity of COVID-19 – systematic review, meta-analysis, and meta-regression. *J Stroke Cerebrovasc Dis* 2020;104949. <https://doi.org/10.1016/j.jstrokecerebrovasdis.2020.104949>.
- [4] Pranata R, Lim MA, Huang I, Raharjo SB, Lukito AA. Hypertension is associated with increased mortality and severity of disease in COVID-19 pneumonia: a systematic review, meta-analysis and meta-regression. *J Renin-Angiotensin-Aldosterone Syst JRAAS* 2020;21:147032032092689. <https://doi.org/10.1177/1470320320926899>.
- [5] Pranata R, Soeroto AY, Ian H, Lim MA, Santoso P, Permana H, et al. Effect of chronic obstructive pulmonary disease and smoking on the outcome of COVID-19. *Int J Tubercul Lung Dis* 2020. <https://doi.org/10.5588/ijtld.20.0278>.
- [6] Huang I, Pranata R. Lymphopenia in severe coronavirus disease-2019 (COVID-19): systematic review and meta-analysis. *J Intensive Care* 2020;8:36. <https://doi.org/10.1186/s40560-020-00453-4>.
- [7] Pranata Raymond, Lim Michael A, Yonas Emir, Vania Rachel, Lukito Antonia A, Siswanto Bambang B, et al. Body mass index and outcome in patients with COVID-19: a dose-response meta-analysis. *Diabetes Metabol* 2020. <https://doi.org/10.1016/j.diabet.2020.07.005>. S1262–3636(20)30097-5. In press.
- [8] Madjid M, Connolly AT, Nabutovsky Y, Safavi-Naeini P, Miller CC. Influenza epidemics are associated with an increased risk of ventricular arrhythmia therapies in patients with implantable cardiac defibrillators. *J Am Coll Cardiol* 2017;69:1736. [https://doi.org/10.1016/S0735-1097\(17\)35125-2](https://doi.org/10.1016/S0735-1097(17)35125-2).
- [9] Shi S, Qin M, Shen B, Cai Y, Liu T, Yang F, et al. Association of cardiac injury with mortality in hospitalized patients with COVID-19 in wuhan, China. *JAMA Cardiol* 2020. <https://doi.org/10.1001/jamacardio.2020.0950>.
- [10] Lazznerini PE, Boutjdir M, Capecechi PL. COVID-19, arrhythmic risk and inflammation: mind the gap! *Circulation. CIRCULATIONAHA* 2020;120:047293. <https://doi.org/10.1161/CIRCULATIONAHA.120.047293>.
- [11] Wang D, Hu B, Hu C, Zhu F, Liu X, Zhang J, et al. Clinical characteristics of 138 hospitalized patients with 2019 novel coronavirus-infected pneumonia in wuhan, China. *JAMA, J Am Med Assoc* 2020;1–9. <https://doi.org/10.1001/jama.2020.1585>.
- [12] Cao J, Tu W-J, Cheng W, Yu L, Liu Y-K, Hu X, et al. Clinical features and short-term outcomes of 102 patients with corona virus disease 2019 in wuhan, China. *Clin Infect Dis* 2020. <https://doi.org/10.1093/cid/ciaa243>.
- [13] World Health Organization. Report of the WHO-China Joint Mission on Coronavirus Disease (COVID-19). vol. 2019. n.d. 2019.
- [14] Zhang G, Hu C, Luo L, Fang F, Chen Y, Li J, et al. Clinical features and outcomes of 221 patients with COVID-19 in Wuhan, China. *MedRxiv* 2020. <https://doi.org/10.1101/2020.03.02.20030452>.
- [15] Hu L, Chen S, Fu Y, et al. Risk factors associated with clinical outcomes in 323 COVID-19 patients in wuhan , China. *MedRxiv* 2020. <https://doi.org/10.1101/2020.03.25.20037721>.
- [16] Driggin E, Madhavan MV, Bikdeli B, Chuich T, Laracy J, Bondi-Zoccai G, et al. Cardiovascular considerations for patients, health care workers, and health systems during the coronavirus disease 2019 (COVID-19) pandemic. *J Am Coll Cardiol* 2020. <https://doi.org/10.1016/j.jacc.2020.03.031>.
- [17] Huang I, Pranata R, Lim MA, Oehadian A, Alisjahbana B. C-reactive protein, procalcitonin, D-dimer, and ferritin in severe coronavirus disease-2019: a meta-analysis. *Ther Adv Respir Dis* 2020;14. <https://doi.org/10.1177/1753466620937175>.
- [18] Lim MA, Pranata R, Huang I, Yonas E, Soeroto AY, Supriyadi R. Multiorgan failure with emphasis on acute kidney injury and severity of COVID-19: systematic review and meta-analysis. *Can J Kidney Heal Dis* 2020;7. <https://doi.org/10.1177/2054358120938573>.
- [19] Lakkireddy DR, Chung MK, Gopinathannair R, Patton KK, Gluckman TJ, Turagam M, et al. Guidance for cardiac electrophysiology during the coronavirus (COVID-19) pandemic from the heart rhythm society COVID-19 task force; electrophysiology section of the American college of cardiology; and the electrocardiography and arrhythmias committee of. *Heart Rhythm* 2020. <https://doi.org/10.1016/j.hrthm.2020.03.028>.
- [20] Santoso A, Pranata R, Wibowo A, Al-Farabi MJ, Huang I, Antariksa B. Cardiac injury is associated with mortality and critically ill pneumonia in COVID-19: a meta-analysis. *Am J Emerg Med* 2020. <https://doi.org/10.1016/j.ajem.2020.04.052>.
- [21] Pranata R, Huang I, Lukito AA, Raharjo SB. Elevated N-terminal pro-brain natriuretic peptide is associated with increased mortality in patients with COVID-19: systematic review and meta-analysis. *Postgrad Med* 2020. <https://doi.org/10.1136/postgradmedj-2020-137884>.
- [22] Hoffmann M, Kleine-Weber H, Schroeder S, Krüger N, Herrler T, Erichsen S, et al. SARS-CoV-2 cell entry depends on ACE2 and TMPRSS2 and is blocked by a clinically proven protease inhibitor. *Cell* 2020. <https://doi.org/10.1016/j.cell.2020.02.052>.
- [23] Pranata R, Permana H, Huang I, Lim MA, Soetedjo NNM, Supriyadi R, et al. The use of renin angiotensin system inhibitor on mortality in patients with coronavirus disease 2019 (COVID-19): a systematic review and meta-analysis. *Diabetes Metab Syndr Clin Res Rev* 2020. <https://doi.org/10.1016/j.dsx.2020.06.047>.
- [24] Tai W, He L, Zhang X, Pu J, Voronin D, Jiang S, et al. Characterization of the receptor-binding domain (RBD) of 2019 novel coronavirus: implication for development of RBD protein as a viral attachment inhibitor and vaccine. *Cell Mol Immunol* 2020. <https://doi.org/10.1038/s41423-020-0400-4>.
- [25] Li W, Moore MJ, Vasliava N, Sui J, Wong SK, Berne MA, et al. Angiotensin-converting enzyme 2 is a functional receptor for the SARS coronavirus. *Nature* 2003;426:450–4. <https://doi.org/10.1038/nature02145>.
- [26] Chen L, Li X, Chen M, Feng Y, Xiong C. The ACE2 expression in human heart indicates new potential mechanism of heart injury among patients infected with SARS-CoV-2. *Cardiovasc Res* 2020. <https://doi.org/10.1093/cvr/cvaa078>.
- [27] Tse G, Yeo JM, Chan YW, Lai ETHL, Yan BP. What is the arrhythmic substrate in viral myocarditis? Insights from clinical and animal studies. *Front Physiol* 2016;7. <https://doi.org/10.3389/fphys.2016.00308>.
- [28] Clerkin KJ, Fried JA, Raikhelkar J, Sayer G, Griffin JM, Masoumi A, et al. Coronavirus disease 2019 (COVID-19) and cardiovascular disease. *Circulation* 2020;120:046941. <https://doi.org/10.1161/circulationaha.120.046941>.
- [29] Lazznerini PE, Capecechi PL, Laghi-Pasini F. Systemic inflammation and arrhythmic risk: lessons from rheumatoid arthritis. *Eur Heart J* 2016;ehw208. <https://doi.org/10.1093/eurheartj/ehw208>.
- [30] Lazznerini PE, Laghi-Pasini F, Boutjdir M, Capecechi PL. Cardioimmunology of arrhythmias: the role of autoimmune and inflammatory cardiac channelopathies. *Nat Rev Immunol* 2019;19:63–4. <https://doi.org/10.1038/s41577-018-0098-z>.
- [31] Lazznerini PE, Laghi-Pasini F, Bertolozzi I, Morozzi G, Lorenzini S, Simpatico A, et al. Systemic inflammation as a novel QT-prolonging risk factor in patients with torsades de pointes. *Heart* 2017;103:1821–9. <https://doi.org/10.1136/heartjnl-2016-311079>.
- [32] Hancock JC, Hasnain M, Vieweg WVR, Crouse ELB, Baranchuk A. Azithromycin , cardiovascular risks , QTc interval prolongation , torsade de pointes , and regulatory issues : a narrative review based on the study of case reports. 2013. p. 155–66. <https://doi.org/10.1177/2049936113501816>.
- [33] Kapoor A, Pandurangi U, Arora V, Gupta A, Jaswal A, Nabar A, et al. Cardiovascular risks of hydroxychloroquine in treatment and prophylaxis of COVID-19 patients: a scientific statement from the Indian Heart Rhythm Society. *Indian Pacing Electrophysiol J* 2020;20:117–20. <https://doi.org/10.1016/j.ipej.2020.04.003>.
- [34] Mosholder AD, Mathew J, Alexander JJ, Smith H, Nambiar S. Cardiovascular risks with azithromycin and other antibacterial drugs. *N Engl J Med* 2013;368:1665–8. <https://doi.org/10.1056/NEJMp1302726>.
- [35] Ray WA, Murray KT, Hall K, Arbogast PG, Stein CM. Azithromycin and the risk of cardiovascular death. *N Engl J Med* 2012;366:1881–90. <https://doi.org/10.1056/NEJMoa1003833>.
- [36] Pfizer Labs. *Zithromax (azithromycin tablets) and azithromycin for oral suspension*. 2013.
- [37] Reyskens KMSE, Fisher TL, Schisler JC, O'Connor WG, Rogers AB, Willis MS, et al. The maladaptive effects of HIV protease inhibitors (Lopinavir/Ritonavir) on the rat heart. *PLoS One* 2013;8. <https://doi.org/10.1371/journal.pone.0073347>.
- [38] Liu J, Shah SK, Basu-Ray I, Garcia-Diaz J, Khalid K, Saeed M. QT prolongation in HIV-positive patients: review article. *Indian Heart J* 2019;71:434–9. <https://doi.org/10.1016/j.ihj.2019.11.259>.
- [39] Tisdale JE, Jaynes HA, Kingery JR, Mourad NA, Trujillo TN, Overholser BR, et al. Development and validation of a risk score to predict QT interval prolongation in hospitalized patients. *Circ Cardiovasc Qual Outcomes* 2013;6:479–87. <https://doi.org/10.1161/CIRCOUTCOMES.113.000152>.