

# Mixed-method estimation of population-level HIV viral suppression rate in the Western Cape, South Africa

Elton Mukonda,<sup>1</sup> Nei-Yuan Hsiao,<sup>2,3</sup> Lara Vojnov,<sup>4</sup> Landon Myer,<sup>1</sup> Maia Lesosky <sup>1</sup>

**To cite:** Mukonda E, Hsiao N-Y, Vojnov L, *et al*. Mixed-method estimation of population-level HIV viral suppression rate in the Western Cape, South Africa. *BMJ Global Health* 2020;**5**:e002522. doi:10.1136/bmjgh-2020-002522

**Handling editor** Stephanie M Topp

► Additional material is published online only. To view please visit the journal online (<http://dx.doi.org/10.1136/bmjgh-2020-002522>).

Part of this data was presented at the 2020 Conference on Retroviruses and Opportunistic Infections (Poster) in Boston, Massachusetts 8-11 March, 2020.

Received 24 March 2020  
Revised 13 July 2020  
Accepted 14 July 2020



© Author(s) (or their employer(s)) 2020. Re-use permitted under CC BY-NC. No commercial re-use. See rights and permissions. Published by BMJ.

For numbered affiliations see end of article.

**Correspondence to**  
Dr Maia Lesosky;  
[lesosky@gmail.com](mailto:lesosky@gmail.com)

## ABSTRACT

**Introduction** There are few population-wide data on viral suppression (VS) that can be used to monitor programmatic targets in sub-Saharan Africa. We describe how routinely collected viral load (VL) data from antiretroviral therapy (ART) programmes can be extrapolated to estimate population VS and validate this using a combination of empiric and model-based estimates.

**Methods** VL test results from were matched using a record linkage algorithm to obtain linked results for individuals. Test-level and individual-level VS rates were based on test VL values <1000 cps/mL, and individual VL <1000 cps/mL in a calendar year, respectively. We calculated population VS among people living with HIV (PLWH) in the province by combining census-derived midyear population estimates, HIV prevalence estimates and individual level VS estimates from routine VL data.

**Results** Approximately 1.9 million VL test results between 2008 and 2018 were analysed. Among individuals in care, VS increased from 85.5% in 2008 to 90% in 2018. Population VS among all PLWH in the province increased from 12.2% in 2008 to 51.0% in 2017. The estimates derived from this method are comparable to those from other published studies. Sensitivity analyses showed that the results are robust to variations in linkage method, but sensitive to the extreme combinations of assumed VL testing coverage and population HIV prevalence.

**Conclusion** While validation of this method in other settings is required, this approach provides a simple, robust method for estimating population VS using routine data from ART services that can be employed by national programmes in high-burden settings.

## INTRODUCTION

Viral load (VL) monitoring is the current standard for evaluating treatment effectiveness and transmission risk in people living with HIV (PLWH). Subsequent to WHO guidelines supporting the implementation of VL monitoring in 2013 for all HIV-infected adults on antiretroviral therapy (ART),<sup>1</sup> there has been a rapid roll-out and scale-up of VL monitoring in sub-Saharan Africa.<sup>2</sup> Programmatic evaluation of public sector monitoring requires systematic, and often digital, data

## Key questions

### What is already known?

- Measuring population viral suppression is important to gauge progress towards the 'third-90' of the WHO '90-90-90' targets towards elimination of HIV.
- Typical methods for this measurement are costly and time-consuming population-level surveys.

### What are the new findings?

- Good estimates of population-level viral suppression rates can be obtained using routine laboratory data.
- The 'third-90' target will not be met overall in South Africa, but is close in some subgroups.

### What do the new findings imply?

- With good access to viral load testing and centralised databases, population viral suppression can be well estimated using routine laboratory data.

collection, storage and analysis. Most African countries have only recently developed capacity for digital collection and storage of routine laboratory data,<sup>3 4</sup> though others, such as Kenya (<https://viraload.nascop.org/>) and Uganda (<https://vldash.cphluga.org/>) have embraced digital and open dashboards as one part of reporting. Routine data represents a rich source of programme evaluation which is often overlooked due to concerns regarding completeness, timeliness, representativeness and accuracy.<sup>5</sup> This ultimately hampers efforts to evaluate microlevel and macrolevel programme interventions or policy changes, for example, evaluating treatment effectiveness and transmission risk in PLWH. Commonly, despite the high cost and low frequency, there is a reliance on intermittent community surveys and multiple indicator cluster surveys to evaluate microprogramme and macroprogramme interventions.<sup>5</sup>

In parallel, The Joint United Nations Programme on HIV/AIDS (UNAIDS) '90-90-90' targets<sup>6</sup> require the use of VL monitoring to assess the 'third-90'. Meeting the '90-90-90'

targets requires an approximate population viral suppression (VS) rate among all PLWH, including those not in care, of approximately 73%. Most of the published work evaluating the '90-90-90' targets have relied on special surveys<sup>7-10</sup> or mathematical models,<sup>11,12</sup> and when routine data are used, the results typically provide only a snapshot of the progress for a 1-year period.<sup>13,14</sup>

In this study, we develop a method for the evaluation of progress towards the 'third-90' and the overall '90-90-90' target in the Western Cape, South Africa using routinely collected public sector laboratory data, regional population census estimates and model-based HIV prevalence estimates. We demonstrate a novel mixed-method approach, as well as a novel record linkage algorithm to estimate age and sex stratified VS rates among all PLWH in the Western Cape, South Africa.

## METHODS

### VL measures

According to the South African guidelines,<sup>15</sup> routine VL monitoring for individuals receiving ART is 6 and 12 months after ART initiation and annually thereafter. Before 2010, 6-monthly VL monitoring was recommended for individuals on first line therapy.<sup>16</sup> Elevated VL >1000 copies/mL triggers additional testing, per guidelines to occur within 6 months of the initial elevated VL. For each routine VL request, a standardised request form containing patient identifiers are manually captured into the laboratory information system at the receiving laboratory before the patient sample is centrifuged and tested using two locally validated and equivalent platforms: the Abbott Realtime HIV-1 (Abbott Molecular, Des Plaines, USA) or Roche Cobas Ampliprep/Cobas TaqMan HIV-1 (Roche Diagnostics, Branchburg, USA) assays.

### Data

We reviewed routine VL test results carried out by the National Health Laboratory Service (NHLS) in the two laboratories based in the Western Cape province, South Africa between 1 January 2008 and 30 September 2018. The NHLS is the largest diagnostic pathology service in South Africa providing laboratory testing to public sector patients (over 80% of the South African population attend public sector services<sup>4</sup>) through a national network of laboratories. These data were initially in the form of separate unlinked individual VL test results. Minimal clinical and individual characteristics were available, including date of test, sex, age or date of birth (partial) and location of test request (healthcare facility). Results from facilities in other provinces, from private sector healthcare facilities, and tests taken as part of a clinical trials or research studies were excluded. The resulting data set represents a catchment area consisting of all public-sector ART clinics and hospitals servicing individuals on ART in the Western Cape province of South Africa. We assume that individuals receiving VL tests have been initiated on ART as VL testing is only indicated after that point.

### Data processing and record linkage

Due to the variable presence of reliable unique identifiers in the data a custom record linkage procedure was developed. Individuals who had complete matching identifier information (including first and second names, date of birth and patient record identifier) were separated into the reference set. The remaining results were split into data sets based on the quality of the identifying information. Pairwise evaluations between the reference set and the comparative data sets were made and similarity scores using the Jaro-Winkler (JW) algorithm<sup>17</sup> and hierarchical clustering using the JW distance metric were calculated for first and second names independently. Scores were combined, and any similarity score above a specified threshold was used to indicate a match. Matches were integrated into the reference set, and the algorithm run iteratively until no further matches could be identified. The same procedure was performed iteratively by using the best of the comparative datasets as the reference. Different thresholds for the distance metric and summary scores were evaluated as part of a sensitivity analyses, this and full details of the record matching algorithm can be found in the online supplementary.

### Statistical methods

#### Test-level VS

Each VL result was classified as 'suppressed' or 'not suppressed'. Two definitions of VS were considered: the WHO threshold of a test VL <1000 copies/mL, and VL <400 copies/mL. The overall proportion of suppressed tests by any strata or period was calculated by taking the total number of test results below the threshold and dividing it by the total number of tests in that period.

#### Person-level VS

The proportion of HIV-infected individuals assumed to be in care and on treatment who were virally suppressed in each year was calculated as the total number of individuals whose last test in the year had VL <1000 copies/mL (or VL <400 copies/mL) divided by the total number of individuals having a VL test in that year. We assume individuals in care are attending ART services, as VL testing is otherwise not indicated, but there is no record of ART available. As part of a sensitivity analysis, individual-level viral status was also evaluated using the first test of the year. Selection of a single test per individual per year was used to avoid complications with multiple tests per year.

#### Population-level VS

The estimated number of PLWH in each year was calculated using data from three sources: the South African census, a mathematical model, and the routine data described in this work. End of year population estimates were interpolated from consecutive midyear population estimates produced by Statistics South Africa<sup>18-28</sup> under the assumption that the population is growing at a constant rate (exponential growth model).

The annual HIV prevalence for the Western Cape province was estimated from the Thembisa model (a mathematical model of the South African HIV epidemic, accessed June 2019).<sup>29</sup> The product of the annual HIV prevalence and the total number of individuals at risk (end of year adult population) is the estimated number of PLWH in the Western Cape. Age and sex strata subestimates were calculated in the same way, making provisions for the availability of annual age-specific and sex-specific HIV prevalence rates in the Thembisa model. The number of people in care and on treatment was estimated using the number of unique individuals with any VL measurement during the given period. We further assumed that all individuals not in care (the difference between the number estimated to be living with HIV and the number of individuals reported in the VL database) would have VL >1000 copies/mL (or >400 copies/mL). This assumption was subject to sensitivity analyses.

Population-level VS was estimated by taking the number of individuals virally suppressed in a given period and dividing by the total number of PLWH (both in and out of care). Considering that routine test data are only available for a fraction of 2018, population-level suppression was only estimated for the period 2008–2017. We compared our individual-level and population-level VS estimates with other published estimates or special surveys, and with the standard target represented by the ‘third-90’.

Estimates were tabulated by frequency (percent) and visualised using line and bar charts. 95% CIs for proportions were calculated. All analyses and record linkage were done in R V.3.6 (R Core Team, Vienna, Austria).

### Patient and public involvement

No patients or public were involved in the development, design or recruitment of this study. Results will be disseminated to the organisations involved, and where indicated, as public posters and media.

## RESULTS

### Test-level suppression

A total of 1 985 883 VL tests were available from 533 sites between 1 January 2008 to 30 September 2018.

Services scaled up from an average of 5128 VL tests per month in 2008 to 27 558 per month in 2018, an increase of nearly 500%. Approximately two-thirds of the tests carried out during the study period came from women. The age distributions for males and females are similar in shape with males a median (IQR) age of 38 years (IQR: 31–44) vs 34 years (IQR: 28–40) for females (table 1). The aggregate proportion of virally suppressed tests (VL <1000 cps/mL) was higher among women in care than men in care (85.0% vs 82.5%;  $p < 0.001$ ) (table 1). Similar results were found when VS was assessed at 400 copies/mL, and over each calendar year (table 1, online supplementary table 1). Overall test-level VS rates ranged from 80% to 87% during the study period (table 2) with over 80% of test results coming from individuals between the ages of 25 and 54 (online supplementary tables 2–3).

### Record linkage

The linkage procedure described resulted in eight different patient-level cohorts based on the linkage method (online supplementary table 6). These cohorts were then compared with the number of people on ART as reported by the Western Cape Department of Health (DOH)<sup>30</sup> (online supplementary figure 1) to evaluate linkage validity. While deterministic linkage (full name or ID) produces cohorts with higher numbers of unique individuals, the overall percentage differences from the Western Cape DOH estimates are higher than those produced from a combination of deterministic and probabilistic linkage. The linkage methods with JW distance metric thresholds of 0.9 and 1 (perfect linkage) produced results closest to the DOH estimates. The method with JW metric similarity threshold of 0.9, which accounts for approximate matches rather than exact matches only (similarity threshold of 1), was chosen as the baseline linkage scenario. This gives rise to the cohort reported for individual-level and population-level suppression with a total of 474 595 unique individuals in care and a median of 7 (IQR: 4–10) tests per individual.

**Table 1** Characteristics of the VL tests requested from NHLS by viral load level (2008–2018)

Cohort	Viral suppression (VL <400 copies/mL)		Viral suppression (VL <1000 copies/mL)	
	VL <400 copies/mL	VL ≥400 copies/mL	VL <1000 copies/mL	VL ≥1000 copies/mL
No (%) VL tests all data	1 621 536 (81.7)	364 343 (18.3)	1 672 082 (84.2)	313 797 (15.8)
Male	508 025 (80.0)	127 258 (20.0)	524 270 (82.5)	111 013 (17.5)
Female	1 113 511 (82.4)	237 085 (17.6)	1 147 816 (85.0)	202 784 (15.0)
Med (IQR) age (years)	36 (30–43)	34 (27–41)	36 (30–43)	34 (27–41)

NHLS, National Health Laboratory Service; VL, viral load.

**Table 2** Summary and comparison of test-level and person-level viral suppression (VL <1000 copies/mL) between 2008 and 2018 for all tests and for individuals in care, disaggregated by sex

Year	Male		Females		Overall	
	Tests <1000 copies/mL N (%)	Individuals with VL <1000 copies/mL N (%)	Tests <1000 copies/mL N (%)	Individuals with VL <1000 copies/mL N (%)	Tests <1000 copies/mL N (%)	Individuals with VL <1000 copies/mL N (%)
2008	14 557 (83.5)	10 738 (84.1)	28 696 (85.1)	21 297 (86.2)	43 253 (84.6)	32 035 (85.5)
2009	26 973 (84.7)	16 663 (84.4)	53 850 (86.6)	32 789 (86.7)	80 823 (85.9)	49 452 (85.9)
2010	26 578 (83.8)	19 797 (85.2)	52 017 (84.6)	38 813 (86.3)	78 595 (84.3)	58 610 (85.9)
2011	33 756 (78.9)	26 907 (83.7)	67 789 (79.9)	53 992 (85.2)	101 545 (79.6)	80 899 (84.7)
2012	41 971(81)	34 263 (85.3)	85 985 (82.9)	69 903 (87.5)	127 956 (82.3)	104 166 (86.7)
2013	50 801 (80.9)	41 138 (85.6)	104 750 (82.6)	85 690 (87.5)	155 551 (82.1)	126 828 (86.9)
2014	52 128 (81.1)	44 108 (85.7)	115 523 (83.9)	96 100 (88.1)	167 651(83)	140 208 (87.3)
2015	61 358 (82.2)	52 614 (86.5)	142 353 (85.4)	117 255 (89.2)	203 711 (84.4)	169 869 (88.3)
2016	72 922(83)	62 655 (87.9)	166 176 (85.7)	135 684(90)	239 098 (84.9)	198 339 (89.3)
2017	79 031 (83.5)	69 454 (88.3)	183 101 (86.6)	152 080 (90.7)	262 132 (85.7)	221 534 (89.9)
2018*	64 195(85)	60 726 (88.6)	147 576 (87.7)	133 768 (90.7)	211 771 (86.9)	194 494(90)

\*2018 is a partial year estimate, January to September. VL, viral load.

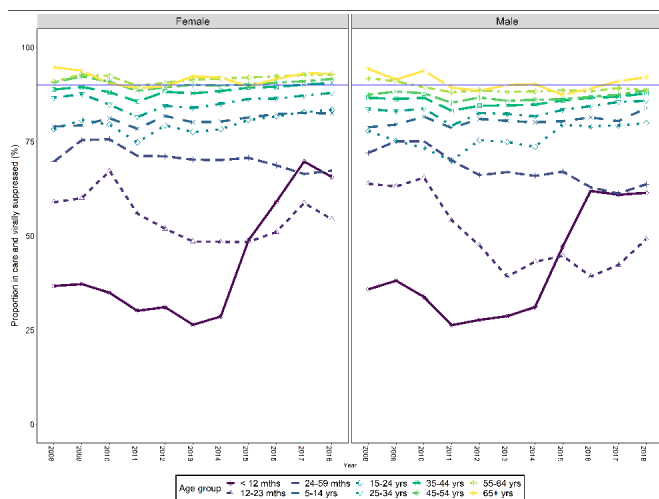
**Individual-level suppression**

As with test-level suppression rates, person-level suppression rates for those in care (VL <1000 copies/mL) were consistently higher for females (range: 84.5%–90.7%) than for males (range: 83.1%–88.6%) between 2008 and 2017, irrespective of age group (table 2). All age and sex strata demonstrated improvement in VS rates, except for children between the ages of 1 and 5 years (figure 1) for whom VS rates appear flat or potentially in decline. The lowest rates of VS in the Western Cape were for children between the ages of 0 and 2 years with the highest rates for people older than 65 years (figure 1, online supplemental file 1, tables 2–3). However, infants in this province receive a pre-ART VL as confirmation for their

PCR diagnosis, potentially impacting the vs estimate. In all strata, individual-level VS was consistently higher than test-level VS, pointing to the importance of record linkage. This difference may also reflect the potential for oversampling of viraemic individuals due to policy guidelines (individuals with VL >1000 cps/mL should be retested within 3–6 months).

**Population-level suppression**

The estimated rate of population-level VS among all PLWH, both in care in the public health sector and outside of care, increased from 12.3% in 2008 to 51% in 2017, growth of more than 300% (table 3). At the end of 2017, an estimated 51% of PLWH were estimated to be virally suppressed, while an estimated 90% of PLWH and enrolled in public sector services were virally suppressed (tables 2 and 3). Our estimates varied slightly on use of VL <400 copies/mL as a threshold (online supplementary table 7). The estimates for population-level VS did not vary substantially with linkage method, though there are noticeable differences when comparing deterministic linkage and the combination of deterministic and probabilistic linkage (online supplementary table 8). Disaggregating by age and sex (online supplementary figure 2) reveals that women living with HIV had consistently higher population VS rates compared with men living with HIV, while youths living with HIV (ages 15–24 years) appeared to have the lowest rates of population VS (range: 2.8%–39%) in the period. Women living with HIV and between 25 and 49 appear to be making the most progress with an estimated 72% being virally suppressed in 2017.



**Figure 1** Proportions of individuals in care who are virally suppressed in the Western Cape disaggregated by age and sex.

**Comparison to other studies**

Estimates for the third-90 found in this study using routine laboratory data were similar to those produced



**Table 3** Estimated population viral suppression rate for all people living with HIV in the Western Cape

Year	End of year population*	Total HIV prevalence (%) †	HIV-infected population	Individuals with VL <1000 copies/mL	Proportion virally suppressed (%)‡
2008	5 308 512	4.9	261 332	32 035	12.3
2009	5 288 519	5.2	275 266	49 452	18.0
2010	5 254 963	5.5	287 057	58 610	20.4
2011	5 455 552	5.7	310 433	80 899	26.1
2012	5 819 473	5.9	342 790	104 166	30.4
2013	6 063 550	6.1	368 182	126 828	34.4
2014	6 157 898	6.2	383 989	140 208	36.5
2015	6 222 410	6.4	397 189	169 869	42.8
2016	6 396 236	6.5	416 515	198 339	47.6
2017	6 564 961	6.6	434 634	221 534	51.0
2018§	6 655 523	6.7	446 303	194 494	43.6

\*Interpolated from SA midyear population estimates.

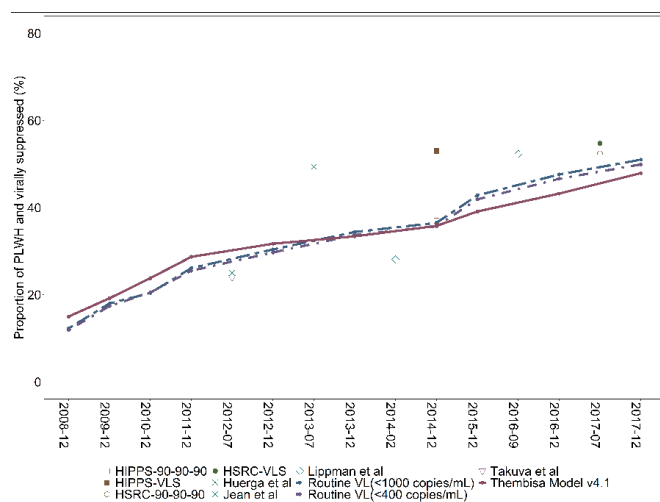
†Obtained from the Thembisa model.

‡Assumes those not in care have VL >1000 cps/mL.

§Estimates for the end of September 2018.

VL, viral load.

from models<sup>11</sup> for the Western Cape, and those obtained from other studies (7–10, 31 for other South African populations) (figure 2, online supplementary figures 3–4). The major differences are likely attributable to the different populations and age groups for which the other estimates were produced,<sup>8–10 13</sup> and different implementations of guidelines by region or province. Definition of VS (VL <400 copies/mL vs VL <1000 copies/mL)<sup>11</sup> and the fact that estimates produced in this study did not verify that individuals were currently taking ART may also play a role in the variation of estimates.



**Figure 2** Method-based estimation of population viral suppression among all people living with HIV (PLWH) in the Western Cape (dashed lines), compared with mathematical model based (purple solid line) and cross-sectional survey estimates (points) from 2008 to 2017. HSRC, Human Sciences Research Council; VL, viral load.

## DISCUSSION

Using routine laboratory data, we have provided valuable insight into the programme achievements of the South African public sector HIV services in the Western Cape. The aim of this study was to give the year-on-year progress made towards the third-90 in the Western Cape using routinely collected data. An in-depth analysis of the progress made towards the third-90 may help to identify populations and areas which may require additional support for HIV testing, linkage, ART roll-out strategies and adherence/retention.<sup>31</sup> The results show clear evidence of substantial improvement in test-level and estimated population-level VS rates in the study period, against a background of a massive scale up of HIV testing and ART services, pointing to the effectiveness of the South African HIV treatment programmes. There remain areas of concern however, and the ‘third-90’ target appears to be only partially met. The proportion of HIV-infected individuals who are virally suppressed steadily increased between 2008 and 2018, though disaggregation by age and sex reveals stark differences between groups throughout the period.

Women in care in the Western Cape have achieved the third-90 target with 90% of women receiving routine VL tests virally suppressed in 2018. Women received significantly higher numbers of tests when compared with men, and had marginally higher proportions of tests with VL <1000 copies/mL. This is in line with other data from this area and other regions, where retention of men in ART services tends to be worse and men show poorer rates of maintenance of VS.<sup>32</sup> The over-representation of women in HIV care services may be due to the strong maternal and child health platform, or stronger care seeking behaviour among women in the Western Cape<sup>31 33 34</sup> as entry and

retention into these programmes were better. This supports the call for further targeting of HIV testing and ART initiation and retention strategies aimed at men.

While there is an overall improvement in VS rates among individuals for most of the age groups, suppression for children aged between 0 and 5 years appears to be decreasing over the period. This phenomenon is unexplained by the available data and would warrant further investigation but could be a consequence of limitations of the data, or of implementation concerns such as difficulty in drug administration or non-optimal drugs. HIV-infected individuals between 15 and 24 years had markedly low VS rates and are a group of concern. This is thought to be primarily a result of lower adherence to ART in this age group, though other possible reasons include poor transition from paediatric to adult services, poor linkage to care and suboptimal disclosure of adolescents' HIV status.<sup>35</sup> Older age groups in care do better than younger age groups, again in line with other findings.<sup>36,37</sup> Only 17% of all tests were for individuals either above 55 years and under 25 years. This is in line with the low rates of HIV testing among children,<sup>36</sup> and older individuals, who are generally not targeted for testing and HIV prevention.<sup>35</sup> Proportions of men and women who were virally suppressed and over the age of 55 were consistently above 90% between 2008 and 2017.

Population-level VS estimates produced in this study were consistent with estimates produced from mathematical modelling<sup>11</sup> for the Western Cape and those produced in other studies.<sup>7-10 13 14 38 39</sup> The most recent of these surveys was the Fifth South African National HIV Prevalence, Incidence, Behaviour and Communication Survey conducted by the Human Sciences Research Council (HSRC)<sup>39</sup> in 2017. This study produced estimates for the 'third-90' and VL suppression prevalence, a measure which is similar in calculation to population VS. Estimates for population VS prevalence and the 'third-90' for the Western Cape province from the HSRC study were 54.7% and 52.4%, respectively. Both are comparable to the estimate obtained in this study for 2017 (51.0%). Additionally, the disaggregated estimates are also consistent with the findings in this study that females had higher VL suppression and that among youth and adult PLWH, those aged between 15 and 24 had the lowest VL suppression, while those above 45 had the highest suppression rates.

There are a few key assumptions underlying this analysis. We assume that individuals in the VL testing database have been initiated onto ART at some point and are attending ART services, as VL testing is not otherwise indicated. The assumption that there is good VL testing coverage in the Western Cape and that population mobility (receiving care elsewhere) is not a major factor is a main assumption. This is reasonable to assume in this province with an extensive and low cost to user ART provision programme, but may not hold in other settings. While individuals not in care were assumed to be viraemic, individuals in care, on treatment but without access to VL were not explicitly accounted for, nor were individuals receiving HIV care in the private sector accounted for, though they make up a

small proportion of the population living with HIV in South Africa. Estimates from a 2014 case study<sup>40</sup> on the electronic framework for monitoring ART ('TIER.net') indicated that only 60%–70% of individuals in the province had VL tests done, but as indicated elsewhere,<sup>41</sup> estimates from this system may also have completeness concerns.

This analysis is not without limitations as it primarily depends on uniquely identifying individuals in the population. The estimates of population-level suppression are, therefore, dependent on the robustness of the record linkage procedure, and the correctness of the underlying identifiers captured through the sample collection and processing stages. In the absence of a reliable unique identifier there is still room for erroneous matching. However, the fact that approximately 85% of the data had reliable and consistent identifiers prior to probabilistic linkage suggests that the overall estimates are likely robust. Secondly, this analysis depends on the usage of census and model-based estimates of the population living with HIV. While population estimates were obtained and extrapolated from census data, there were no empirical data from which to extract annualised provincial HIV-prevalence rates, disaggregated by age group and sex over the period of interest. As a result, population-level suppression estimates are only as reliable as the secondary data used to produce them. The Thembisa model<sup>11</sup> is a reliable source of HIV prevalence estimates for the South African population, but does not extend to other settings. A possible source of annualised prevalence estimates is the Spectrum model, which is used by national programmes and UNAIDS to prepare annual estimates of the status of the HIV epidemic in 160 countries.<sup>42</sup> An additional weakness of the study is that the estimates given do not factor in the change in policy from the biannual tests to annual tests circa 2010, nor the broadening of treatment eligibility that occurred over the study period.<sup>43 44</sup>

Importantly, our study used routinely collected data and did not require additional or specialised surveys, leveraging an important source of data. Despite the lack of a reliable unique identifier, we demonstrated a record linkage procedure using available identifiers to assign tests to individuals in the dataset. In cases where there is no identifying information with which to perform the record linkage, test-level estimates can be used. However, care must be taken in interpretation as test-level VS is likely to underestimate the person-level and population-level VS due to oversampling of individuals who are viraemic, in line with most guidelines that suggest retesting of individuals after evidence of viraemia. Estimates from this study were comparable to specialised surveys carried out for the purpose of population-level VS, supporting a mixed-methods approach for routine data.

## CONCLUSIONS

There has been a significant scale up in the provision of VL testing in the Western Cape and South Africa more generally, along with clear evidence of improving rates of VS. While it is evident that significant progress has been

made towards the third-90, the target to have 73% of HIV-infected individuals on ART and virally suppressed by 2020 is unlikely to be met. Routinely collected test-level data alone should not be used for estimates of person-level or population-level VS rates without record linkage being performed as it consistently underestimates the rate of VS, at least in settings where follow-up VL tests are undertaken in response to raised VL. The regular use of routinely collected VL data in conjunction with an understanding of ART coverage and population in care could, however, help bridge the gaps of knowledge and aid in identification of vulnerable populations that require concerted efforts to achieve the overall 90-90-90 targets. This approach has promise in settings where reliable population and HIV prevalence estimates are available and may allow for more frequent and less expensive programme assessment.

#### Author affiliations

<sup>1</sup>Division of Epidemiology & Biostatistics, School of Public Health & Family Medicine, University of Cape Town, Cape Town, Western Cape, South Africa

<sup>2</sup>National Health Laboratory Services, Groote Schuur Hospital, Cape Town, South Africa

<sup>3</sup>Division of Medical Virology, Department of Pathology, University of Cape Town, Cape Town, Western Cape, South Africa

<sup>4</sup>World Health Organization, Geneva, GE, Switzerland

**Contributors** N-YH, LM and ML developed initial concept. N-YH obtained data. EM and ML carried out analysis with guidance from LV, N-YH and LM. All authors interpreted results. EM and ML prepared first draft. All authors contributed to final draft.

**Funding** The authors have not declared a specific grant for this research from any funding agency in the public, commercial or not-for-profit sectors.

**Competing interests** None declared.

**Patient and public involvement** Patients and/or the public were not involved in the design, or conduct, or reporting, or dissemination plans of this research.

**Patient consent for publication** Not required.

**Ethics approval** Use of data was approved by the University of Cape Town Human Research Ethics Committee and conformed to the principles embodied in the Declaration of Helsinki. The need for individual consent was waived by this committee.

**Provenance and peer review** Not commissioned; externally peer reviewed.

**Data availability statement** No data are available. The data are owned by the South African National Health Laboratory Services and includes personal information including identifiers, therefore, cannot be made publicly available.

**Open access** This is an open access article distributed in accordance with the Creative Commons Attribution Non Commercial (CC BY-NC 4.0) license, which permits others to distribute, remix, adapt, build upon this work non-commercially, and license their derivative works on different terms, provided the original work is properly cited, appropriate credit is given, any changes made indicated, and the use is non-commercial. See: <http://creativecommons.org/licenses/by-nc/4.0/>.

#### ORCID iD

Maia Lesosky <http://orcid.org/0000-0002-2026-958X>

## REFERENCES

- World Health Organization. *Consolidated guidelines on the use of antiretroviral drugs for treating and preventing HIV infection. recommendations for a public health approach*. Geneva, Switzerland: World Health Organization, 2016.
- Peter T, Zeh C, Katz Z, *et al*. Scaling up HIV viral load - lessons from the large-scale implementation of HIV early infant diagnosis and CD4 testing. *J Int AIDS Soc* 2017;20 Suppl 7:e25008.
- National Health Laboratory Service. National Health Laboratory Service [Who Are We?2019]. Available: [http://www.nhls.ac.za/?page=who\\_are\\_we&id=17](http://www.nhls.ac.za/?page=who_are_we&id=17) [Accessed 20 May 2019].
- Gimbel S, Mwanza M, Nisingizwe MP, *et al*. Improving data quality across 3 sub-Saharan African countries using the consolidated framework for implementation research (CFIR): results from the African health Initiative. *BMC Health Serv Res* 2017;17:828.
- Wagenaar BH, Sherr K, Fernandes Q, *et al*. Using routine health information systems for well-designed health evaluations in low- and middle-income countries. *Health Policy Plan* 2016;31:129–35.
- UNAIDS. *90-90-90: an ambitious treatment target to help end the AIDS epidemic*. Geneva, Switzerland: UNAIDS, 2014.
- Grobler A, Cawood C, Khanyile D, *et al*. Progress of UNAIDS 90-90-90 targets in a district in KwaZulu-Natal, South Africa, with high HIV burden, in the HIPSS study: a household-based complex multilevel community survey. *Lancet HIV* 2017;4:e505–13.
- Huerga H, Van Cutsem G, Ben Farhat J, *et al*. Progress towards the UNAIDS 90-90-90 goals by age and gender in a rural area of KwaZulu-Natal, South Africa: a household-based community cross-sectional survey. *BMC Public Health* 2018;18:303.
- Jean K, Puren A, Cutler E, *et al*. Level of viral suppression and the cascade of HIV care in a South African semi-urban setting in 2012. *AIDS* 2016;30:2107–16.
- Maman D, Chilima B, Masiku C, *et al*. Closer to 90-90-90. The cascade of care after 10 years of ART scale-up in rural Malawi: a population study. *J Int AIDS Soc* 2016;19:20673.
- Johnson LF, Dorrington RE, Moolla H. Progress towards the 2020 targets for HIV diagnosis and antiretroviral treatment in South Africa. *South Afr J HIV Med* 2017;18:694.
- Abuelezam NN, McCormick AW, Surface ED, *et al*. Modelling the epidemiologic impact of achieving UNAIDS fast-track 90-90-90 and 95-95-95 targets in South Africa. *Epidemiol Infect* 2019;147:e122.
- Takuya S, Brown AE, Pillay Y, *et al*. The continuum of HIV care in South Africa: implications for achieving the second and third UNAIDS 90-90-90 targets. *AIDS* 2017;31:545–52.
- MacLeod W, Bor J, Crawford K, *et al*. *Spatial clustering analysis of viral load suppression by South African Province, district, sub-district and facility (April 2014–March 2015)*. National Department of Health, 2015.
- Department of Health (Republic of South Africa). *National consolidated guidelines: for the prevention of mother-to-child transmission of HIV (PMTCT) and the management of HIV in children, adolescents and adults*. Pretoria, South Africa: Department of Health, Republic of South Africa, 2015.
- National Department of Health. *South African national antiretroviral treatment guidelines*. Pretoria, South Africa: Jacana, 2004.
- Winkler WE. *Overview of record linkage and current research directions*. Washington DC: Statistical Research Division, U.S. Census Bureau, 2006.
- Statistics South Africa. *Mid-year population estimates, 2019*. Pretoria: Statistics South Africa, 2019.
- Statistics South Africa. *Mid-year population estimates, 2018*. Pretoria: Statistics South Africa, 2018.
- Statistics South Africa. *Mid-year population estimates, 2017*. Pretoria: Statistics South Africa, 2017.
- Statistics South Africa. *Mid-year population estimates, 2016*. Pretoria: Statistics South Africa, 2016.
- Statistics South Africa. *Mid-year population estimates, 2015*. Pretoria: Statistics South Africa, 2015.
- Statistics South Africa. *Mid-year population estimates, 2014*. Pretoria: Statistics South Africa, 2014.
- Statistics South Africa. *Mid-year population estimates, 2013*. Pretoria: Statistics South Africa, 2013.
- Statistics South Africa. *Mid-year population estimates, 2011*. Pretoria: Statistics South Africa, 2011.
- Statistics South Africa. *Mid-year population estimates, 2010*. Pretoria: Statistics South Africa, 2010.
- Statistics South Africa. *Mid-year population estimates, 2009*. Pretoria: Statistics South Africa, 2009.
- Statistics South Africa. *Mid-year population estimates, 2008*. Pretoria: Statistics South Africa, 2008.
- Johnson LF, Chiu C, Myer L, *et al*. Prospects for HIV control in South Africa: a model-based analysis. *Glob Health Action* 2016;9:30314.
- Western Cape Government Health. *Western Cape government health, annual report 2017/2018*. Cape Town: Western Cape Government Health, 2018.
- Bärnighausen T, Chaiyachati K, Chimbindi N, *et al*. Interventions to increase antiretroviral adherence in sub-Saharan Africa: a systematic review of evaluation studies. *Lancet Infect Dis* 2011;11:942–51.

- 32 Sharma M, Barnabas RV, Celum C. Community-based strategies to strengthen men's engagement in the HIV care cascade in sub-Saharan Africa. *PLoS Med* 2017;14:e1002262.
- 33 Cornell M, Myer L, Kaplan R, *et al*. The impact of gender and income on survival and retention in a South African antiretroviral therapy programme. *Trop Med Int Health* 2009;14:722–31.
- 34 Johnson LF. Access to antiretroviral treatment in South Africa, 2004 – 2011. *South Afr J HIV Med* 2012;13:22–7.
- 35 Davies M-A, Boulle A, Fakir T, *et al*. Adherence to antiretroviral therapy in young children in Cape town, South Africa, measured by medication return and caregiver self-report: a prospective cohort study. *BMC Pediatr* 2008;8:34.
- 36 Cornell M, Johnson LF, Schomaker M, *et al*. Age in antiretroviral therapy programmes in South Africa: a retrospective, multicentre, observational cohort study. *Lancet HIV* 2015;2:e368–75.
- 37 Chhim K, Mburu G, Tuot S, *et al*. Factors associated with viral non-suppression among adolescents living with HIV in Cambodia: a cross-sectional study. *AIDS Res Ther* 2018;15:20.
- 38 Lippman SA, El Ayadi AM, Grignon JS, *et al*. Improvements in the South African HIV care cascade: findings on 90-90-90 targets from successive population-representative surveys in North West Province. *J Int AIDS Soc* 2019;22:e25295.
- 39 Human Sciences Research Council (HSRC). *The fifth South African national HIV prevalence, incidence, behaviour and communication survey, 2017: HIV impact assessment summary report*. Cape Town: Human Sciences Research Council (HSRC), 2018.
- 40 Osler M, Hilderbrand K, Hennessey C, *et al*. A three-tier framework for monitoring antiretroviral therapy in high HIV burden settings. *J Int AIDS Soc* 2014;17:18908.
- 41 Etoori D, Wringe A, Kabudula CW, *et al*. Misreporting of patient outcomes in the South African national HIV treatment database: consequences for programme planning, monitoring, and evaluation. *Front Public Health* 2020;8:100.
- 42 Stover J, Walker N, Grassly NC, *et al*. Projecting the demographic impact of AIDS and the number of people in need of treatment: updates to the spectrum projection package. *Sex Transm Infect* 2006;82 Suppl 3:iii45–50.
- 43 Tsai AC, Siedner MJ. The missing men: HIV treatment scale-up and life expectancy in sub-Saharan Africa. *PLoS Med* 2015;12:e1001906.
- 44 Meintjes G, Moorhouse MA, Carmona S, *et al*. Adult antiretroviral therapy guidelines 2017. *South Afr J HIV Med* 2017;18:776.