



National Trends of Organ Dysfunctions in Sepsis: An 11-Year Longitudinal Population-Based Cohort Study

Chia-Hung Yo^{1,†}, Chih-Cheng Lai^{2,†}, Tzu-Chun Hsu³, Cheng-Yi Wang⁴, Alvaro E. Galvis⁵, Debra Yen⁶, Wan-Ting Hsu⁷, Jason Wang⁸, Chien-Chang Lee^{3,*}

¹Department of Emergency Medicine, Far Eastern Memorial Hospital, New Taipei City, Taiwan

²Department of Internal Medicine, Kaohsiung Veterans General Hospital, Tainan Branch, Tainan, Taiwan

³Department of Emergency Medicine, National Taiwan University Hospital, Taipei, Taiwan

⁴Department of Internal Medicine, Cardinal Tien Hospital and School of Medicine, College of Medicine, Fu Jen Catholic University, New Taipei City, Taiwan

⁵Department of Infectious Diseases, Children's Hospital of Orange County, University of California, CA, USA

⁶Department of Medicine, Washington University School of Medicine, Saint Louis, MO, USA

⁷Department of Epidemiology, Harvard T.H. Chan School of Public Health, Boston, MA, USA

⁸Department of Pediatrics, University of Nevada Las Vegas School of Medicine, Nevada, USA

Background: Little is known about the trend of incidence and mortality of specific organ dysfunction among sepsis patients at the population level. This study aimed to examine the trend and mortality of organ dysfunction in patients with sepsis using a nationwide database in Taiwan.

Methods: We conducted a study using 2002–2012 data from the nationwide health insurance database of Taiwan. Sepsis hospitalizations were identified by Angus algorithm to include all cases with ICD-9-CM codes for specific sepsis diagnosis and both an infectious process and a diagnosis of acute organ dysfunction. The primary outcome was the trend of incidence and in-hospital mortality of specific type of organ dysfunction in sepsis patients.

Results: We identified 1,259,578 adult patients with sepsis. Acute respiratory dysfunction, cardiovascular dysfunction/shock, and renal system dysfunction were the leading three types of acute organ dysfunction, accounting for 65.6, 30.5, and 18.3% of all sepsis patients, respectively. All types of organ dysfunction increased over time, except for hepatic and metabolic systems. Renal system (annual increase: 13.5%) and cardiovascular system dysfunction (annual increase: 4.3%) had the fastest increase. Mortality from all sources of infection has decreased significantly in the study period (trend $p < 0.001$).

Conclusions: This is the first true nationwide population-based data showing the trend and outcome of acute organ dysfunction in sepsis patients. Renal and cardiovascular systems dysfunction are increasing at an alarming rate.

Key words: *sepsis, organ dysfunction, sepsis-related mortality*

Introduction

Sepsis is a clinical syndrome that develops when a human's host immune system responds to

infection.¹ This response may cause collateral injury to affect organs or systems, leading to a life-threatening condition.² Before 2016, sepsis was traditionally defined as the presence of infection and the systemic

Received: December 23, 2018; Revised: February 1, 2019; Accepted: March 28, 2019.

*Corresponding author: Chien-Chang Lee, MD, ScD, Department of Emergency Medicine, National Taiwan University Hospital, No.7, Chung Shan S. Rd., Zhongzheng Dist., Taipei City 100, Taiwan. E-mail: cclee100@gmail.com

†Chia-Hung Yo and Chih-Cheng Lai have made equal contributions to this article and shared the co-first authorship.

inflammatory response syndrome (SIRS). In addition, two severe forms of sepsis: severe sepsis and septic shock were also defined.¹ Many large-scale or population-based studies³⁻⁶ regarding the incidence, trends, and outcomes of sepsis or severe sepsis were reported based on the SIRS definition. However, the new clinical definition of sepsis that is termed as Sepsis-3 was proposed in 2016 by the Society of Critical Care Medicine and the European Society of Intensive Care Medicine.⁷ Sepsis-3 is based on the presence of infection and organ dysfunction. Operationally, acute organ dysfunction is defined by an increase of more than 2 points in the total sequential organ failure assessment (SOFA) score in the intensive care unit (ICU) settings or quick SOFA score outside the ICU settings. Although several studies^{3,8-10} have assessed the burden of sepsis at the national level, studies that examine the trends of incidence and outcomes of organ function in sepsis, which is an important component of the Sepsis-3 definition, are still lacking.

Moreover, organ replacement therapies, comprised of evidence-based hemodynamic optimization and organ protection devices, have been introduced and widely adopted for the management of patients with sepsis in the last few decades. These therapies include invasive or non-invasive mechanical ventilation (MV) for respiratory failure, intra-aortic balloon pumps for cardiac dysfunction, dialysis for renal injury, and extracorporeal membrane oxygenation for cardiopulmonary failure. The development of new management approaches, such as the protective-ventilation strategy,¹¹ conservative strategy of fluid management,¹² and restrictive transfusion¹³ have also significantly changed clinical practice. It is, therefore, interesting to know the temporal trend of the incidence and outcome of acute organ dysfunctions in patients with sepsis. Thus, the aim of this study is to investigate the incidence and outcomes of different types of organ dysfunction among patients with sepsis over time.

Methods

Study Cohort

The entire National Health Insurance (NHI) claims database of Taiwan between January 1, 2002 and December 31, 2012 was used for this study. Because the NHI of Taiwan was a government-operated and mandatory health insurance system with a 99.7%

coverage rate, using such database allowed us to obtain information for almost all 23 million residents of Taiwan. The database was developed as part of the National Health Informatics Project sponsored by the Ministry of Health and Welfare of Taiwan. The NHI Research Database contained complete outpatient and inpatient electronic claim records, individual diagnoses, procedures, and medications prescribed. Available information on all prescription drugs included brand name, route of administration, quantity, and number of days supplied. Since this was an anonymized administrative database study, patient consent was not required. Our study was approved by the institutional review board of National Taiwan University Hospital (no. 201402032RINA).

Following the publication of the surviving sepsis campaign in 2004, a nationwide educational program was launched by the joint Taiwan Critical Care Medicine Committee, which consisted of three medical societies: Critical Care Medicine, Emergency and Critical Care Medicine, and Pulmonary and Critical Care Medicine (total board-certified specialists = 2,102). This educational program included at least 10-hours of training for physicians who work in the ICU.¹⁴ During the study period, there was no financial incentive that encouraged physicians to follow the guideline.

Case Selection and Definitions

According to sepsis-3, sepsis is defined as life-threatening organ dysfunction caused by a dysregulated host response to infection.⁷ We only included adult patients for this analysis and patients under 18 years of age were excluded. The cases with sepsis was identified by the ICD-9 coding strategy proposed by Angus that identified sepsis cases by combining ICD-9-CM codes for both a bacterial or fungal infection and a diagnosis of acute organ dysfunction in the hospital or emergency department records.¹⁵ The organs/systems dysfunctions used for this study included cardiovascular/shock, respiratory, central nervous, hematologic, hepatic, renal and metabolic dysfunctions. The ICD-9 codes used for identification of acute organ dysfunction were shown in the Appendix 1. Index date was defined as the first day of emergency department visit or hospital admission of sepsis. We also included patients with an explicit code of sepsis, severe sepsis, and septic shock (ICD-9 CM: 995.92, 785.52). Angus implementation¹⁵ is the most

common administrative implementations for severe sepsis and has been cited more than 2,000 times as of December 2011. This implementation was validated by demonstrating that it identifies a population of patients similar in aggregate to one identified by nursing-led prospective assessment^{16,17} or physician review.¹⁸ We used the Angus implementation of identify sepsis cases in this study to ensure the comparability with international sepsis epidemiology. The following information including demographic, presence of pre-existing comorbidity, and outcome were collected. Other information was abstracted from the index hospitalization claims records. We defined the mortality as the 30-day all-cause mortality verified by a linked national death certificate database.

Statistical Analysis

We compared the characteristics and outcomes of organ dysfunction among patients with sepsis across the study period. Categorical variables were presented as frequency and percentage, and continuous variables were presented as mean \pm standard deviation. The annual incidence of sepsis was calculated as the number of sepsis patients divided by the number of population in a given year. When there were multiple episodes of sepsis in one patient, we only counted the first episode in a given year. The mortality rate was calculated by the number of deaths divided by the total number of sepsis patients. The

temporal trends were all presented with line graphs. Our nationwide database allowed for the capture of all cases of sepsis and there was minimal possibility of chance variation. Therefore, confidence intervals were not presented in all estimates. All analyses were performed using SAS Version 9.3 (SAS Institute Inc., Cary, NC, USA), and a two sided *p*-value of 0.05 was deemed as statistical significance.

Results

Demographics

In total, we identified 1,259,578 episodes of sepsis between 2002 and 2012 (Fig. 1). Overall, acute respiratory failure was the most common organ dysfunction (65.6%, *n* = 827,078) among sepsis patients, followed by cardiovascular dysfunction/shock (30.5%), renal dysfunction (18.3%), hepatic dysfunction (11.2%), metabolic dysfunction (5.1%), hematologic system dysfunction (5.0%), and central nervous system dysfunction (4.1%). We divided the study periods into three subperiods: 2002–2005, 2006–2009, and 2010–2012 for further analysis (Table 1). Male comprised more than half of sepsis cases, and the ratio of male patients increased from 56.69% first subperiod to 58.47% in last subperiod. The average age of sepsis patients also gradually increased over time, from 67.93 years in the first subperiod to 69.70 years in the last subperiod. In all subperiods, acute respira-

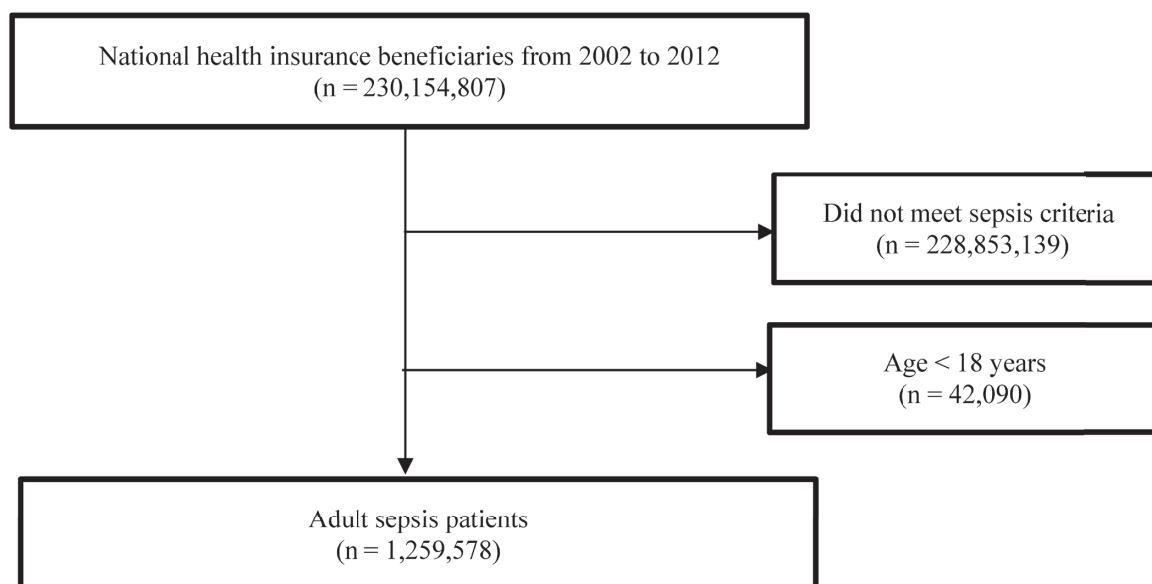


Fig. 1. Flowchart for patient enrollment.

Table 1. Characteristics of patients with sepsis according to three subperiods spanning 2002 to 2012

Characteristic	2002–2005 n = 380,343	2006–2009 n = 471,489	2010–2012 n = 407,746
Male sex (%)	227,020 (56.69)	278,826 (58.78)	238,422 (58.47)
Age	67.93 ± 16.45	69.03 ± 16.50	69.70 ± 16.68
Acute organ/system dysfunction			
Acute respiratory failure (%)	266,614 (70.10)	314,445 (66.69)	246,019 (60.34)
Cardiovascular dysfunction/shock(%)	104,620 (27.51)	148,730 (39.10)	130,796 (34.39)
Renal system dysfunction (%)	51,579 (13.56)	87,101 (18.47)	91,941 (22.55)
Hepatic system dysfunction (%)	45,735 (12.02)	51,868 (11.00)	43,259 (10.61)
Metabolic system dysfunction (%)	22,174 (5.83)	23,111 (4.90)	19,309 (4.74)
Hematologic system dysfunction (%)	18,682 (4.91)	22,677 (4.81)	22,186 (5.44)
Central nervous system dysfunction (%)	13,919 (3.66)	19,208 (4.07)	18,183 (4.46)
Outcome			
All-cause mortality (30 days) (%)	100,866 (26.52)	114,582 (24.30)	93,560 (22.95)

n = total number of severe sepsis and septic shock patients.

tory failure remained the most common type of organ dysfunction, but the percentage of acute respiratory failure among patients with sepsis declined from 70.10% in first subperiod to 60.34% in last subperiod. The decreasing trends of organ dysfunction over time were also noted for hepatic system dysfunction, and metabolic dysfunction. In contrast, the trends of renal system dysfunction, hematologic systemic dysfunction, and central nervous system dysfunction appeared increasing with time. For cardiovascular dysfunction/shock—the second most common type of organ dysfunction, the ratio was lowest in first subperiod (27.51%), and highest in second subperiod (39.10%). Finally, the 30-day all-cause mortality rate decreased from 26.52% in the first subperiod to 22.95% in the last subperiod.

Incidence

Fig. 2 and Table 2 showed annual incidence (per 100,000 persons) of sepsis-related organ dysfunction over the 11-year period. The incidence of patients with renal dysfunction (annual increase of 13.51%), cardiovascular dysfunction/shock (annual increase of 4.31%), central nervous system dysfunction (annual increase of 4.10%), hematologic dysfunction (annual increase of 2.10%) and respiratory dysfunction (annual increase of 0.14%) were found to increase from year 2002 to year 2012. In contrast, the incidence of sepsis patients with hepatic dysfunctions (annual decrease of 0.42%) and metabolic dysfunctions (annual

decrease of 0.88%) were found to decrease in number during the study period.

The Mortality of Septic Patients With Specific Organ Dysfunction and Mortality

Fig. 3 and Table 3 illustrated the 30-day all-causes mortality of different types of organ dysfunctions. The mortality rates for all kinds of organ dysfunctions were trending downward in general. The mortality of central nervous system dysfunction decreased at the fastest rate (annual mortality decrease: -2.61%), followed by renal system (-2.59%), hematologic system (-2.37%), respiratory system (-1.99%), metabolic system (-1.65%), cardiovascular system (-1.63%), and hepatic system dysfunction (-0.58%).

Discussion

After the development of sepsis-3 consensus, acute organ dysfunction has become an essential part of sepsis diagnosis. By using a large database encompassing the population of an entire nation for eleven years, we were able to determine the true population-based incidence and mortality trend of organ dysfunctions among patients with sepsis. We determined respiratory system (65.6%), cardiovascular system (30.5%), and renal system dysfunctions (18.3%) were the leading three organ dysfunctions associated with sepsis. However, renal system dysfunction (annual increase: 13.35%), cardiovascular dysfunction (4.31%),

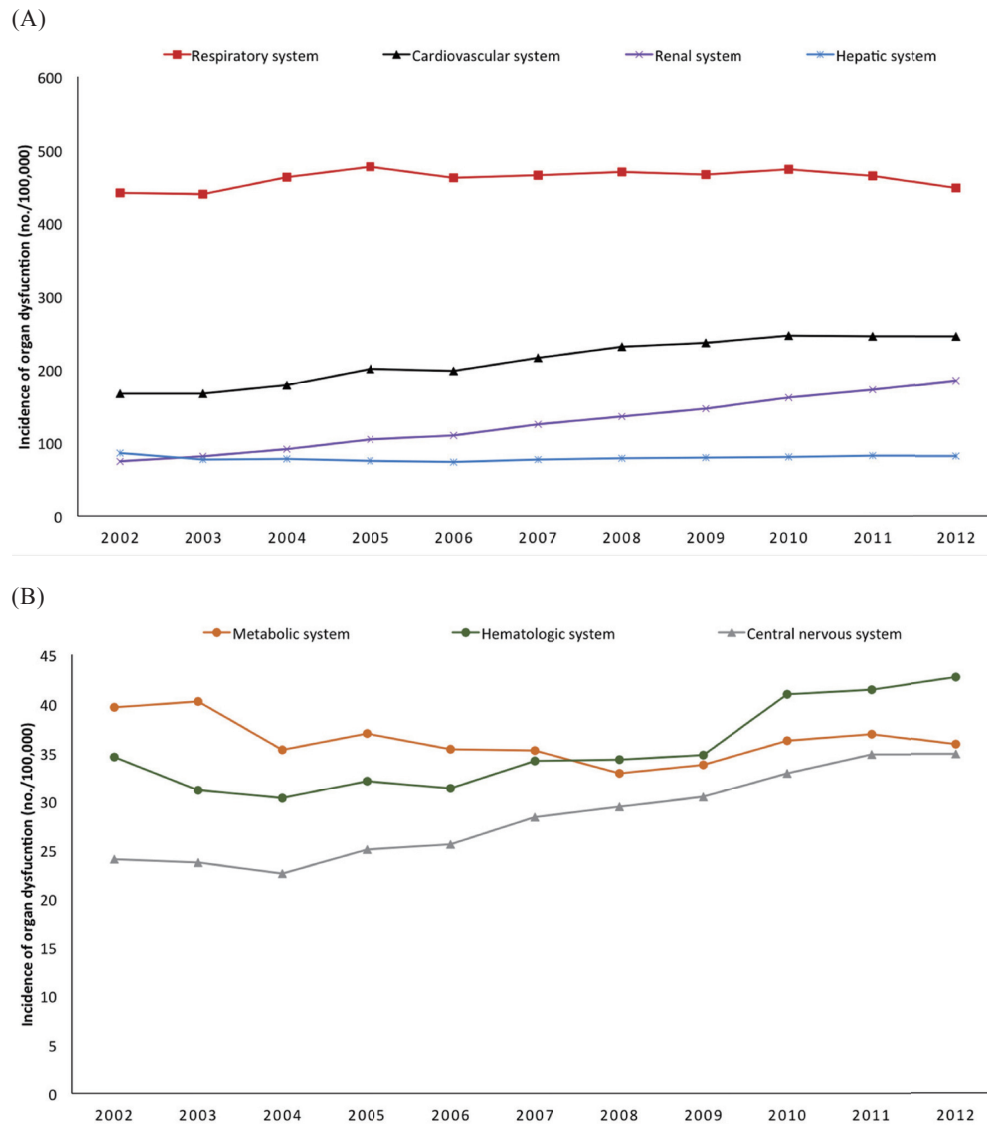


Fig. 2. Changes in population incidence of specific organ dysfunction among patients with sepsis, from 2002 to 2012. (A) High to moderate incidence trends. (B) Low incidence trends.

Table 2. Changes in population incidence of specific organ dysfunction among patients with sepsis, from 2002 to 2012: incidence of all the organ dysfunctions, presented by events per 100,000 population

	2002	2003	2004	2005	2006	2007	2008	2009	2010	2011	2012	Annual change
Cardiovascular system dysfunction	166	167	179	201	198	216	231	236	246	246	245	4.31%
Respiratory system dysfunction	441	440	463	477	463	465	470	466	473	465	448	0.14%
Renal system dysfunction	74	81	91	104	109	125	135	146	161	172	185	13.51%
Hepatic system dysfunction	86	76	77	75	73	77	78	79	80	82	82	-0.42%
Metabolic system dysfunction	40	40	35	37	35	35	33	34	36	37	36	-0.88%
Central nervous system dysfunction	24	24	23	25	26	28	29	30	33	35	35	4.10%
Hematologic system dysfunction	35	31	30	32	31	34	34	35	41	41	43	2.1%

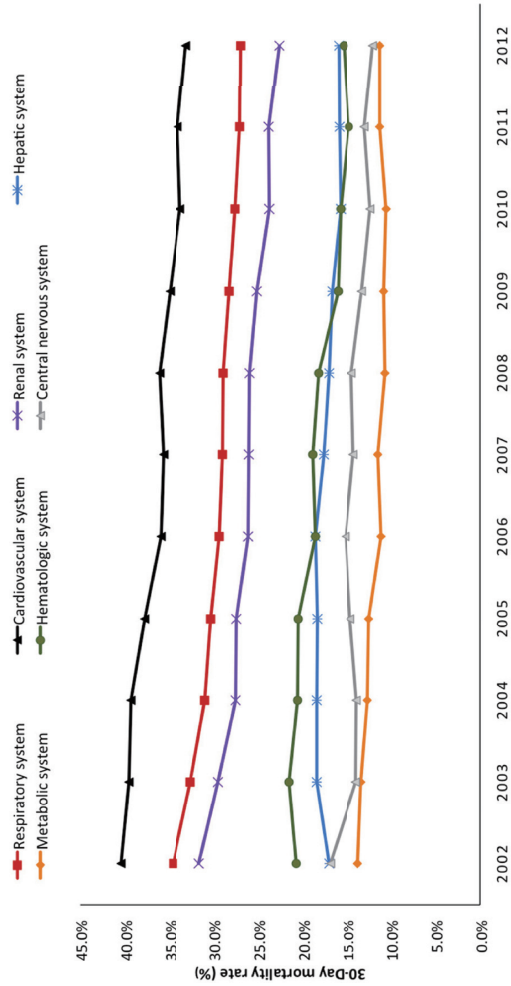


Fig. 3. Changes in mortality rate of specific organ dysfunction among patients with sepsis, from 2002 to 2012: temporal trend of mortality rate.

Table 3 Changes in mortality rate of specific organ dysfunction among patients with sepsis, from 2002 to 2012: mortality rates

	2002	2003	2004	2005	2006	2007	2008	2009	2010	2011	2012	Annual change
Cardiovascular system dysfunction	40.5%	39.6%	39.3%	37.8%	36.0%	35.7%	36.1%	35.0%	33.8%	34.1%	33.2%	-1.63%
Respiratory system dysfunction	34.5%	32.6%	30.9%	30.3%	29.4%	29.0%	28.9%	28.3%	27.6%	27.1%	27.0%	-1.99%
Renal system dysfunction	31.6%	29.5%	27.5%	27.5%	26.1%	26.0%	25.9%	25.2%	23.8%	23.8%	22.6%	-2.59%
Hepatic system dysfunction	17.1%	18.4%	18.5%	18.4%	18.6%	17.6%	17.1%	16.7%	15.7%	15.8%	16.0%	-0.58%
Metabolic system dysfunction	13.8%	13.4%	12.6%	12.5%	11.1%	11.5%	10.7%	10.8%	10.5%	11.2%	11.3%	-1.65%
Central nervous system dysfunction	16.9%	13.9%	13.9%	14.6%	15.2%	14.2%	14.5%	13.3%	12.4%	13.0%	12.1%	-2.61%
Hematologic system dysfunction	20.7%	21.5%	20.6%	20.5%	18.6%	18.9%	18.2%	16.0%	15.7%	14.8%	15.3%	-2.37%

and central nervous system (4.10%) were the three organ dysfunctions that increased at a fastest rate during the study period. Meanwhile, the annual incidence of sepsis increased by 18.7%, from 28,023 in 2002 to 35,650 in 2012.¹⁰ In a previous work,¹⁰ we have shown the incidence of sepsis increased from 600.5 per 100,000 persons in 2002 to 712.9 per 100,000 in 2012 after adjusting for the change of population age and gender structure of over the study period. This work is an extension of previous work, in which we aimed to describe the change of incidence of mortality of different organ dysfunction among patients with sepsis. The knowledge on the epidemiological change of organ dysfunction in sepsis patients will have important public health implications.

Compared with prior studies, Kumar et al.¹⁹ analyzed the US Nationwide Inpatient Sample study showing that respiratory, renal and cardiovascular dysfunction were the most common organ system dysfunctions. In addition, except for the acute respiratory failure showing a downward trend between 2000 and 2007 (from 52.8 to 47.6%), other organ dysfunctions increased with time, especially for renal failure (from 33.4 to 48.6%) and cardiovascular dysfunctions (from 30.3 to 41.7%). Rhee et al.³ analyzed electronic medical record database and found acute kidney injury (AKI), shock, and acute respiratory failure requiring MV were the leading three organ dysfunctions among sepsis patients, with a prevalence of 43.5, 28.4 and 26.0% respectively. In a national study of Norwegian hospitals during the years 2011 and 2012,²⁰ cardiovascular dysfunction was the most common organ dysfunction (48.5%), followed by respiratory system dysfunction (32.0%) and renal dysfunction (24.8%). Another nationwide population-based analysis of severe sepsis in Spain from 2006 to 2011 showed that respiratory failure was the most common dysfunctional organ (50.5%), followed by cardiovascular system (44.7%) and renal system (40.5%).²¹ Among the change of different organ dysfunction, only renal failure had considerable increase with time (from 36.5 to 46.5%).

Taken together, the results of our study were consistent with previous findings. Acute respiratory, cardiovascular, and renal systems dysfunctions were the three most common types of organ dysfunctions in patients with sepsis. In addition, all of these studies showed an upward trend for incidence or prevalence of renal system dysfunction. This rise might be partially explained by increased awareness of AKI,

improved ascertainment in administrative data and greater sensitivity of consensus diagnostic and classification schemes. Furthermore, an increasing aging population, a growing percentage with chronic kidney disease, and an expanding characterization of modifiable risk factors, such as administration of contrast media and exposure to nephrotoxins and broad-spectrum antibiotic,²² had contributed to the increase incidence of renal system dysfunction.

Furthermore, we observed a decreasing trend of sepsis-related mortality similar to previous studies conducted.^{3,14,19,20} The causes should, therefore, be multifactorial. The improving outcome of sepsis could be due to implementation of several Surviving Sepsis Campaign recommended interventions such as the use of vasopressor and hemodynamic monitor, conservative transfusion strategy, early and appropriate antibiotic uses, early goal directed therapy.^{23,24} In Taiwan, Chen et al. demonstrated that a national education program could cause a significant impact on clinical practice and lead to significant reduction of severe sepsis mortality rate.¹⁴ In addition, we also noted that organ dysfunction specific mortality was gradually decreasing during the study period. These could be benefit from the improvement of various organ supports such as lung protection strategy for acute respiratory distress syndrome,⁸ the choice and amount of fluids,^{12,25} appropriate type and intensity of hemodynamic monitoring,²⁶ role of adjunctive vasoactive agents for septic shock,²⁷ and transfusion strategy for hematologic organ dysfunction.¹³

In addition to the decline of overall mortality over time, we observed different trends of mortality decrease for various types of organ dysfunctions. Excluding hepatic dysfunction with an annual mortality decrease of 0.58%, other organ dysfunctions were associated with a more pronounced mortality reduction during the study period with annual mortality decrease of more than 1%. Except for liver transplant, there was limited evidence-based practice with proved benefits to improve liver function during sepsis. This trend indicated that liver support treatment would be an important area for research in improving the outcome of sepsis. Rhee et al.²⁸ noted the increased awareness of AKI after risk, injury, failure, loss of kidney function, and end-stage kidney disease definition was one of the major causes for the observed increased prevalence of AKI and probable pseudo-improvement of AKI or sepsis related mortality. Hence, there was a strong debate that the incidence of sepsis

based on the administrative database was artificially inflated by the code abstraction strategy for renal system dysfunction. We could not totally completely exclude the possibility in our study due to the national education activity of Surviving Sepsis Campaign and several organ dysfunction guidelines increasing the awareness of sepsis, which might lead to improved documentation of sepsis and organ dysfunction. However, we did not have any incentive for quality improvement from the insurance agency to promote the upcoding of sepsis. We also observed that acute renal dysfunction had the sharpest increase during the past decade. Moreover, we did not see the AKI-specific mortality rate decreasing at a similar pace. Therefore, the increase of sepsis could not be entirely explained by the upcoding practice or increased diagnosis of AKI in our database.

Results of this study should be interpreted in light of both strength and weakness. We are the first in literature that estimate the burden of sepsis in a true population based database that could totally avoid the sampling variability. Although we used the most widely validated Angus implementation to identify sepsis cases, previous validation study showed a 71% positive predictive value. The sensitivity was estimated at 50%, but with other coding implementations had even poor sensitivity. We acknowledged that Angus implementation does identify a population predominantly comprised of patients with severe sepsis, but not a pure sample. The burden of sepsis patients may be underestimated given the suboptimal sensitivity.

Conclusions

Respiratory, cardiovascular, and renal system dysfunctions were the three most common and deadly types of organ dysfunctions for patients with sepsis. The different types did not increase in parallel with renal system dysfunction increasing at the sharpest rate and posing a great public health concern. Findings of our study should inform the allocation of research and healthcare resource for different types of organ dysfunctions and also warrant the search of underlying cause for the rapid increase of acute renal dysfunction among sepsis patients for future prevention.

Acknowledgments

We thank the staff of the Core Labs at the Department of Medical Research in National Taiwan

University Hospital for technical support, Medical Wisdom Consulting Group for technical assistance in statistical analysis, and National Taiwan University Hospital Health Data Science Research Group for advice on study design.

Funding

This work was supported by Taiwan Ministry of Science and Technology Grants, MOST-104-2314-B-002-039-MY3 and MOST 107-2314-B-002-196., the research grant of National Taiwan University Hospital Yunlin Branch, NTUHYL108. S006, and the research grant of Far Eastern Memorial Hospital, FEMH-2019-C-038. No funding bodies had any role in study design, data collection and analysis, decision to publish, or preparation of the manuscript.

Availability of Data and Materials

The datasets used during the current study are available from the corresponding author upon reasonable request.

Authors' Contributions

(1) Chien-Chang Lee designed the study, obtained funding, drafted the analytical plan, guided the statistical analysis, interpreted the data, and wrote the draft. (2) Tzu-Chun Hsu, Alvaro E. Galvis, Debra Yen, Wan-Ting Hsu, and Jason Wang helped to collect data in this study. (3) Alvaro E. Galvis and Debra Yen helped with language editing and provided critical comments. (4) Wan-Ting Hsu and Jason Wang conducted statistical analysis. (5) Chia-Hung Yo, Chih-Cheng Lai, Cheng-Yi Wang, and Chien-Chang Lee analyzed the data, provided critical feedback, and authorized the final manuscript. (6) Chia-Hung Yo and Chih-Cheng Lai contributed equally to the work.

Ethics and Consent

This study was approved by the institutional review board of National Taiwan University Hospital (no. 201402032RINA).

Conflicts of Interest Statement

The authors declare that they had no competing interests when conducting the research.

References

1. Angus DC, van der Poll T. Severe sepsis and septic shock. *N Engl J Med* 2013;369:840-851. doi:10.1056/NEJM-ra1208623
2. Russell JA. Management of sepsis. *N Engl J Med* 2006;355:1699-1713. doi:10.1056/NEJMra043632
3. Rhee C, Dantes R, Epstein L, et al. Incidence and trends of sepsis in US hospitals using clinical vs claims data, 2009–2014. *JAMA* 2017;318:1241-1249. doi:10.1001/jama.2017.13836
4. Gaieski DF, Edwards JM, Kallan MJ, Carr BG. Benchmarking the incidence and mortality of severe sepsis in the United States. *Crit Care Med* 2013;41:1167-1174. doi:10.1097/CCM.0b013e31827c09f8
5. Page DB, Donnelly JP, Wang HE. Community-, healthcare-, and hospital-acquired severe sepsis hospitalizations in the University HealthSystem Consortium. *Crit Care Med* 2015;43:1945-1951. doi:10.1097/CCM.0000000000001164
6. Shen HN, Lu CL, Yang HH. Epidemiologic trend of severe sepsis in Taiwan from 1997 through 2006. *Chest* 2010;138:298-304. doi:10.1378/chest.09-2205
7. Singer M, Deutschman CS, Seymour CW, et al. The third international consensus definitions for sepsis and septic shock (sepsis-3). *JAMA* 2016;315:801-810. doi:10.1001/jama.2016.0287
8. Shankar-Hari M, Harrison DA, Rubenfeld GD, Rowan K. Epidemiology of sepsis and septic shock in critical care units: comparison between sepsis-2 and sepsis-3 populations using a national critical care database. *Br J Anaesth* 2017;119:626-636. doi:10.1093/bja/aex234
9. Churpek MM, Snyder A, Sokol S, Pettit NN, Edelson DP. Investigating the impact of different suspicion of infection criteria on the accuracy of quick sepsis-related organ failure assessment, systemic inflammatory response syndrome, and early warning scores. *Crit Care Med* 2017;45:1805-1812. doi:10.1097/CCM.0000000000002648
10. Lee CC, Yo CH, Lee MG, et al. Adult sepsis—a nationwide study of trends and outcomes in a population of 23 million people. *J Infect* 2017;75:409-419. doi:10.1016/j.jinf.2017.08.012
11. Amato MB, Barbas CS, Medeiros DM, et al. Effect of a protective-ventilation strategy on mortality in the acute respiratory distress syndrome. *N Engl J Med* 1998;338:347-354. doi:10.1056/NEJM199802053380602
12. Wiedemann HP, Wheeler AP, Bernard GR, et al. Comparison of two fluid-management strategies in acute lung injury. *N Engl J Med* 2006;354:2564-2575. doi:10.1056/NEJMoa062200
13. Holst LB, Haase N, Wetterslev J, et al. Lower versus higher hemoglobin threshold for transfusion in septic shock. *N Engl J Med* 2014;371:1381-1391. doi:10.1056/NEJMoa1406617
14. Chen YC, Chang SC, Pu C, Tang GJ. The impact of nationwide education program on clinical practice in sepsis care and mortality of severe sepsis: a population-based study in Taiwan. *PLoS One* 2013;8:e77414. doi:10.1371/journal.pone.0077414
15. Angus DC, Linde-Zwirble WT, Lidicker J, Clermont G, Carcillo J, Pinsky MR. Epidemiology of severe sepsis in the United States: analysis of incidence, outcome, and associated costs of care. *Crit Care Med* 2001;29:1303-1310. doi:10.1097/00003246-200107000-00002
16. Angus DC. The lingering consequences of sepsis: a hidden public health disaster? *JAMA* 2010;304:1833-1834. doi:10.1001/jama.2010.1546
17. Sands KE, Bates DW, Lanken PN, et al. Epidemiology of sepsis syndrome in 8 academic medical centers. *JAMA* 1997;278:234-240. doi:10.1001/jama.1997.03550030074038
18. Iwashyna TJ, Odden A, Rohde J, et al. Identifying patients with severe sepsis using administrative claims: patient-level validation of the angus implementation of the international consensus conference definition of severe sepsis. *Med Care* 2014;52:e39-e43. doi:10.1097/MLR.0b013e318268ac86
19. Kumar G, Kumar N, Taneja A, et al. Nationwide trends of severe sepsis in the 21st century (2000–2007). *Chest* 2011;140:1223-1231. doi:10.1378/chest.11-0352
20. Knoop ST, Skrede S, Langeland N, Flaatten HK. Epidemiology and impact on all-cause mortality of sepsis in Norwegian hospitals: a national retrospective study. *PLoS One* 2017;12:e0187990. doi:10.1371/journal.pone.0187990
21. Bouza C, López-Cuadrado T, Saz-Parkinson Z, Amate-Blanco JM. Epidemiology and recent trends of severe sepsis in Spain: a nationwide population-based analysis (2006–2011). *BMC Infect Dis* 2014;14:3863. doi:10.1186/s12879-014-0717-7
22. Rewa O, Bagshaw SM. Acute kidney injury-epidemiology, outcomes and economics. *Nat Rev Nephrol* 2014;10:193-207. doi:10.1038/nrneph.2013.282
23. Dellinger RP, Carlet JM, Masur H, et al. Surviving Sepsis Campaign guidelines for management of severe sepsis and septic shock. *Crit Care Med* 2004;32:858-873. doi:10.1097/01.CCM.0000117317.18092.E4
24. Dellinger RP, Levy MM, Rhodes A, et al. Surviving sepsis campaign: international guidelines for management of severe sepsis and septic shock: 2012. *Crit Care Med* 2013;41:580-637. doi:10.1097/CCM.0b013e31827e83af
25. Rochwerg B, Alhazzani W, Sindi A, et al. Fluid resuscitation in sepsis: a systematic review and network meta-analysis. *Ann Intern Med* 2014;161:347-355. doi:10.7326/M14-0178
26. Shah MR, Hasselblad V, Stevenson LW, et al. Impact of the pulmonary artery catheter in critically ill patients:

- meta-analysis of randomized clinical trials. *JAMA* 2005;294:1664-1670. doi:10.1001/jama.294.13.1664
27. Hammond DA, Ficek OA, Painter JT, et al. Prospective open-label trial of early concomitant vasopressin and norepinephrine therapy versus initial norepinephrine monotherapy in septic shock. *Pharmacotherapy* 2018;38:531-538. doi:10.1002/phar.2105
28. Rhee C, Murphy MV, Li L, Platt R, Klompas M. Improving documentation and coding for acute organ dysfunction biases estimates of changing sepsis severity and burden: a retrospective study. *Crit Care* 2015;19:338. doi:10.1186/s13054-015-1048-9

Appendix 1. ICD-9-CM/procedure codes of organ dysfunction associated with sepsis.

Cardiovascular dysfunction/shock

785.5, Shock
458, Hypotension

Acute respiratory dysfunction

96.7, Mechanical ventilation
57001B, 57002B, 57023B, 57029C, Use of ventilators

Central nervous system dysfunction

348.3, Neurologic encephalopathy
293, Transient organic psychosis
348.1, Anoxic brain damage

Hematologic system dysfunction

287.4, Hematologic secondary thrombocytopenia
287.5, Thrombocytopenia, unspecified
286.9, Other/unspecified coagulation defect
286.6, Defibrination syndrome

Hepatic system dysfunction

570, Hepatic acute and subacute necrosis of liver
572.2, Hepatic encephalopathy
572.4, Hepatorenal syndrome
572.8, Other sequel of chronic liver disease
573.4, 573.8, Hepatic infarction
V42.7, Liver replaced by transplant

Renal system dysfunction

584, Acute renal failure
58014C, Use of CVVH

Metabolic system dysfunction

250.1, Diabetic ketoacidosis
250.2, Hyperosmolar hyperglycemic state