



ELSEVIER

Contents lists available at ScienceDirect

One Health

journal homepage: www.elsevier.com/locate/onehlt

Impact of mitigating interventions and temperature on the instantaneous reproduction number in the COVID-19 pandemic among 30 US metropolitan areas



Xinhua Yu

Division of Epidemiology, Biostatistics and Environmental Health, School of Public Health, University of Memphis, USA

ARTICLE INFO

Keywords:

Virus transmissibility
 Reproduction number
 Mitigating intervention
 Temperature
 COVID-19 epidemic

ABSTRACT

Background: After more than six months into the coronavirus disease (COVID-19) pandemic, as of August 10, 2020, over 734,664 people had died worldwide. The current study aims to evaluate how mitigating interventions affected the epidemic process in the 30 largest metropolitan areas in the US and whether temperature played a role in the epidemic process.

Methods: Publicly available data for the time series of COVID-19 cases and deaths and weather were analyzed at the metropolitan level. The time-varying reproductive numbers (R_t) based on retrospective moving average were used to explore the trends. Student t -tests were used to compare temperature and peak R_t cross-sectionally.

Results: We found that virus transmissibility, measured by instantaneous reproduction number (R_t), had declined since the end of March for all areas and almost all of them reached a R_t of 1 or below after April 15, 2020. The timing of the main decline was concurrent with the implementation of mitigating interventions. However, the R_t s remained around 1 for most areas since then and there were some small and short rebounds in some areas, suggesting a persistent epidemic in those areas when interventions were relaxed. Cities with warm temperature also tended to have a lower peak R_t than that of cities with cold temperature. However, they were not statistically significant and large geographic variations existed.

Conclusions: Aggressive interventions might have mitigated the current pandemic of COVID-19, while temperature might have weak effects on the virus transmission. We may need to prepare for a possible return of the coronavirus outbreak.

1. Introduction

The coronavirus disease (COVID-19) pandemic caused by the novel severe acute respiratory syndrome (SARS) associated coronavirus (SARS-CoV-2) infection [1] has not only affected more than 20 million people and caused over 734,644 deaths worldwide (<https://coronavirus.jhu.edu/map.html>, accessed August 10, 2020), but also induced significant anxiety among the public [2]. Many people raised concerns about whether the stringent interventions were over-reacted, and whether a second wave of outbreak was possible. In the 2003 SARS epidemic, the virus went away after June 2003 and never came back [3]. Will this happen to SARS-CoV-2?

There are several major differences between 2003 SARS coronavirus and 2019 SARS-CoV-2 [3,4]. The 2003 coronavirus had much higher virulence, resulting in higher hospitalizations and mortality rates than the 2019 coronavirus. The transmission of the 2003 coronavirus almost exclusively occurred among symptomatic cases [5], while the 2019

coronavirus can cause a large percent of asymptomatic cases who can also transmit virus [6,7]. Furthermore, the 2019 coronavirus is also circulating in the southern hemisphere where the current temperature is warmer than that of northern hemisphere. By late 2020, it is possible the coronavirus may circulate back to the northern hemisphere, leading to a second wave of epidemic [8]. Therefore, it is important to empirically evaluate the effects of mitigating interventions and examine whether temperature may affect the virus transmissibility and virulence.

One key measure of virus transmissibility during an epidemic is effective reproduction number (R), the average number of secondary cases infected by a primary case [9–11]. Based on the susceptible-infectious-removed (SIR) model, the reproduction number can be conceptualized as (number of contacts)*(infectivity per contact)*(generation interval), where generation interval refers to the average duration between the time when a primary case becoming infectious and the time when secondary cases being infected [10]. Clearly, interventions

E-mail address: xyu2@memphis.edu.

<https://doi.org/10.1016/j.onehlt.2020.100160>

Received 11 June 2020; Received in revised form 10 August 2020; Accepted 13 August 2020

Available online 22 August 2020

2352-7714/ © 2020 The Author(s). Published by Elsevier B.V. This is an open access article under the CC BY license (<http://creativecommons.org/licenses/by/4.0/>).

such as social distancing, stay-at-home rule, school or office closures, and prohibiting large gatherings will reduce the number of contacts, thus reducing R_t . On the other hand, a lower virus infectivity can also reduce R_t , assuming the number of contacts remains unchanged. Therefore, exploring the changes of R_t over time and across different regions can shed new lights on the impact of interventions and environmental factors during the epidemic.

A few studies have used time varying R_t to explore the effects of intervention on the epidemic process [12–16]. For example, one recent study found significant effects of nonpharmaceutical interventions on the transmissibility of SARS-CoV-2, measured by R_t , in Hongkong [16]. However, few studies examined the impact of environmental factors on the COVID-19 epidemic. A few unpublished manuscripts have examined the association between temperature and COVID-19 case counts and found no or a negative but weak association [17–19]. However, their studies were based on case counts among different countries, which subjected to myriads of confounding effects due to different diagnostic criteria, availability of detection kits and reporting biases.

In this study, we will compare the magnitude and changes of time-varying (instantaneous) effective reproduction numbers (R_t) among 30 largest metropolitan areas in the US. We hypothesize that stringent interventions are effective in curbing the epidemic, but higher temperature may also facilitate the decline of the epidemic in some regions.

2. Methods

2.1. Data source

We obtained daily COVID-19 cases and deaths at the US county level from the data repository provided by New York Times (<https://github.com/nytimes/covid-19-data>, accessed on July 15, 2020). We further limited those counties to the 30 largest metropolitan areas (Table 1). All cases and deaths were summarized at the metropolitan level. The sizes of total population and people aged 65 or above for each metropolitan area were obtained from census bureau website.

Table 1

Characteristics and death rates of COVID-19 for 30 largest metropolitan areas in the US, as of July 15, 2020.

Metropolitan area	Total population	Age ≥ 65	Cumulative cases	Cumulative deaths	Deaths per 100 Cases	Deaths per 100 old people
New York	16,669,277	2,789,981	204,805	15,535	7.59	0.56
Los Angeles	10,039,107	1,493,190	140,307	3894	2.78	0.26
Washington DC - Baltimore	9,360,001	1,370,637	101,046	3833	3.79	0.28
Houston	7,066,141	865,112	69,415	672	0.97	0.08
St. Francisco - St. Jose	6,463,637	991,147	29,299	581	1.98	0.06
Chicago	6,021,020	950,164	117,101	5691	4.86	0.60
St Louis	5,485,267	797,415	18,721	1138	6.08	0.14
Atlanta	5,261,067	741,175	58,372	1486	2.55	0.20
Dallas-Fort Worth	5,081,942	615,560	49,031	630	1.28	0.10
Philadelphia	3,815,431	691,016	56,129	3908	6.96	0.57
Minneapolis-St. Paul	3,654,908	580,638	28,927	1303	4.50	0.22
Cleveland - Akron	3,149,448	669,206	16,660	955	5.73	0.14
Seattle	3,074,865	444,891	16,895	825	4.88	0.19
Boston	2,979,288	529,944	52,094	3636	6.98	0.69
Denver	2,967,239	419,589	23,357	1209	5.18	0.29
Miami - Fort Lauderdale-West Palm Beach	2,716,940	467,586	69,802	1175	1.68	0.25
Charlotte	2,675,243	424,892	28,001	341	1.22	0.08
Orlando	2,608,147	430,027	31,270	173	0.55	0.04
Portland	2,492,412	424,694	7636	167	2.19	0.04
Sacramento - Oakland	2,363,730	419,255	8437	131	1.55	0.03
Pittsburg	2,317,600	542,666	8477	346	4.08	0.06
Las Vegas	2,266,715	358,821	24,824	498	2.01	0.14
Cincinnati	2,198,450	394,794	13,305	401	3.01	0.10
Kansas	2,157,990	368,576	10,759	273	2.54	0.07
Columbus	2,122,271	325,706	17,575	556	3.16	0.17
Detroit	2,116,944	387,897	26,748	2882	10.77	0.74
Indianapolis	2,074,537	337,623	20,007	1325	6.62	0.39
Durham-Raleigh	1,974,709	289,249	17,506	298	1.70	0.10
Salt Lake City	1,880,948	207,100	21,128	161	0.76	0.08
Milwaukee	1,575,179	288,873	17,184	478	2.78	0.17

Information about stay-at-home rule for each state was scraped from popular news media. The historical daily average temperature was obtained from national climate data online (<https://www7.ncdc.noaa.gov/CDO>), mostly based on temperature collected from stations at each metropolitan's main airport.

2.2. Reproduction number and serial interval

The time varying reproduction number (R_t) was proposed by Cori et al. [11,20]. This approach assumes the occurrence of secondary cases follows a Poisson distribution, conditioning on the time position in the whole infectious period of the primary case. The overall R_t at time t of the epidemic is the average number of secondary cases for all prior infected cases who are still infectious at a time window $(t-s, t)$. The estimate is based on current secondary cases, not the future infections. Therefore, it can be viewed as instantaneous R_t . To smooth the estimates, a weighted average of R_t over a sliding window is used (e.g., one week window). Consequently, we used a 7-day moving average of prior temperature when assessing the association between R_t and temperature.

The estimation of R_t also depends on the estimation of virus infectivity profile that is approximated from the distribution of generation interval. Since it is difficult to accurately estimate the generation interval, serial interval is often used in calculating R_t [11]. The serial interval refers to the average duration between symptom onset of a primary case and symptom onset of secondary cases. In this study, we assumed the serial interval had a gamma distribution with mean = 4.7 days and standard deviation = 2.9 days [21,22], similar to that of recent studies [15]. This serial interval was applied to all regions throughout the whole study period to ensure the compatibility of R_t across regions. However, different regions at different time might have different serial intervals due to interventions and other environmental and social factors. We also performed sensitivity analysis with a shorter serial interval (mean = 3.95, standard deviation = 4.75 [23]) and a longer interval (mean = 7.5, standard deviation = 3.4) [4]. The

patterns of R_t were similar, except for different estimated R_t values (average peak R_t 1–4 for shorter duration, and 2–9 for longer duration).

2.3. Statistical analysis

Descriptive statistics and bivariate associations were reported. The sizes of total population and people aged 65 or older, and the percent of positive tests at each date were used for adjustment. R package EpiEstim was used [11] to estimate the instantaneous reproduction numbers over time. The association between temperature and R_t was explored cross-sectionally at the peak of R_t and also at some arbitrary dates. After visually checking the histogram of the peak R_t , a roughly symmetric distribution was observed. Thus, student *t*-tests were used for comparisons.

We adopted two time scales in the analysis. The first was calendar date to present the trends of reproduction numbers for all metropolitan areas, starting from the date with at least 10 total reported cases. Staggered entrances into the outbreak were preserved. The second scale was the time since the beginning of the outbreak, regardless what calendar date the outbreak happened. This was to compare the declining patterns of R_t across metropolitan areas. We also realigned the time scale from the peak of the outbreak. The first two weeks of R_t estimates were excluded, as the first week R_t were zeros, and the second week estimates were too variable due to small number of cases.

P value less than 0.01 was considered statistically significant to take account of many statistical comparisons involved. Although we did not adjust for multiple comparisons, we were cautious about over interpretations and conducted statistical tests only between prior selected pairs (e.g., southern versus northern metropolitan areas).

3. Results

The basic characteristics of metropolitan areas were presented in Table 1. All metropolitan areas had at least 1.5 million people in 2019 and over 1000 confirmed cases. As of July 15, 2020, the reported case-fatality rates varied from 0.76 per 100 cases in Salt Lake City, UT to 10.77 per 100 cases in Detroit, MI. However, since there were large variations in case ascertainment criteria and availability of detection kits among different regions, comparing case-fatality rates was unreliable. Meanwhile, since about 80% of deaths occurred among elderly people [24], we compared the ratios of deaths to the size of elderly population among metropolitan areas. The ratios were generally lower in areas with warm weather (mean 0.13, range 0.03- to 0.29 per 100 elderly), and higher in areas with cold temperature (mean: 0.33, range 0.06 to 0.74 per 100 elderly) (*p* for difference = 0.008).

The trends of R_t for 30 metropolitan areas were shown in Fig. 1a-d, grouped by geographic locations and temperature conditions. Overall, the instantaneous R_t s in all areas reached peaks or some stable points after two to three weeks, decreased significantly since the end of March, and most areas reached a R_t of around 1 after April 15. However, some small and short rebounds were presented in some areas. This might be due to case reporting and detection issues, but could also indicate some true rebounds. Throughout June and July, the R_t s remained around 1 for most areas and reached 1.5 or higher in some areas, suggesting a persistent epidemic in those areas. It is of note that around the week of March 25, many schools were closed and many companies started offering employees working from home. The US government has issued COVID-19 coping guideline to all US citizens, and many states also issued stay-at-home rules (see Appendix Table 1). On the other hand, after June, the intervention mandates were relaxed in some areas, leading to large rebounds of R_t .

Fig. 1a compared R_t trends between typical northeastern cities and southern cities. Boston, Chicago, New York and Philadelphia started the epidemic earlier, had higher peak R_t s than that of Miami, Orlando, Houston, and Los Angeles. After some initial increases (though peaked at different dates), all northern cities declined sharply after the mid-

March. In addition, the trajectories of Houston and Los Angeles were similar with initial peaks at around March 18, somewhat decreased and then were stable around March 25. For Miami and Orlando, the R_t s were quite stable during the week of March 25, and declined sharply after about March 28, but had several rebounds in June and July. However, the slopes of decline, when aligned by the time since the peak R_t , were similar except a few spikes in Miami, Houston and Los Angeles (Appendix Fig. 1a).

On the other hand, the R_t curves were indistinguishable between upper midwestern cities and other southern cities (Fig. 1b). Upper midwestern cities except Pittsburgh all had earlier interventions in the mid-March (Appendix Table 1 for dates stay-at-home rules issued), while Minneapolis-St. Paul area had some rebounds over the course of epidemic. In addition, the west coastal cities had an early start of the epidemic, and R_t curves were less volatile than that of other cities during the study period (Fig. 1c). The unusually high R_t in Salt Lake City in the early epidemic may be due to a small number of cases during that period (Fig. 1d).

Furthermore, after realigning the starting time from their respective outbreak peaks for all metropolitan areas, the overall declining patterns were similar across all regions (Appendix Fig. 1a-d).

To evaluate the association between R_t and temperature across regions, we compared the highest R_t (occurred after the first two weeks) among them (Fig. 2), most cities had a peak R_t between 1 and 5. At the low temperature, peak R_t s varied significantly. Cities with cold average temperature generally had higher R_t s than those with warm temperature. However, upper midwestern cities such as Minneapolis-St. Paul, Milwaukee, and Columbus had much lower peak R_t s than the rest of cities. The average peak of R_t s in Boston, Chicago, New York, and Philadelphia were marginally (but not statistically significant) higher than that of Houston, Los Angeles, Orlando and Miami (average peak R_t 4.01 vs. 3.15, *p* = 0.07). In addition, we also arbitrarily examined the R_t patterns on the 15th day after the outbreak and on March 24, 2020 when most interventions had not fully executed (Appendix Fig. 2a and b). These cross-sectional analyses demonstrated similar patterns to that of peak R_t .

4. Discussion

Overall, since the end of March, the instantaneous reproduction number (R_t) declined over time similarly in 30 largest metropolitan areas, and after April 15, R_t s in almost all areas reached 1 or below. Since then, the R_t s remained around 1 in most areas and there were also a few small and short rebounds in some regions, suggesting the epidemic was persistent in those areas. The main decline was concurrent with the implementation of aggressive interventions in the US, while the occurrence of rebounds in some southern areas was coincident with the relaxation of interventions. These suggested stringent interventions were effective in halting the epidemic. However, there were large geographic variations in the R_t patterns, partly due to different levels of interventions, geographic altitudes, and partly might be due to temperature variations.

Without effective interventions, the peak of epidemic will reach higher and the epidemic process will last longer [25]. Thus, the reproduction numbers will not decline until a large proportion of susceptible people are infected. For example, during the week of March 25, R_t s in Houston, Miami, and Orlando were relatively stable (Fig. 1a). After the end of March, due to national efforts in mitigating the epidemic, all R_t curves started declining. The state of Florida, however, did not officially issue the stay-at-home rule until April 3, 2020, where the curves already declined significantly. This posed some difficulties in assessing the intervention effects precisely. On the other hand, a few cities demonstrated some significant impact of interventions on mitigating the epidemic. For example, some upper midwestern cities (e.g., Minneapolis-St. Paul and Milwaukee) implemented interventions earlier, had lower peak R_t s, and their R_t s started declining early, while

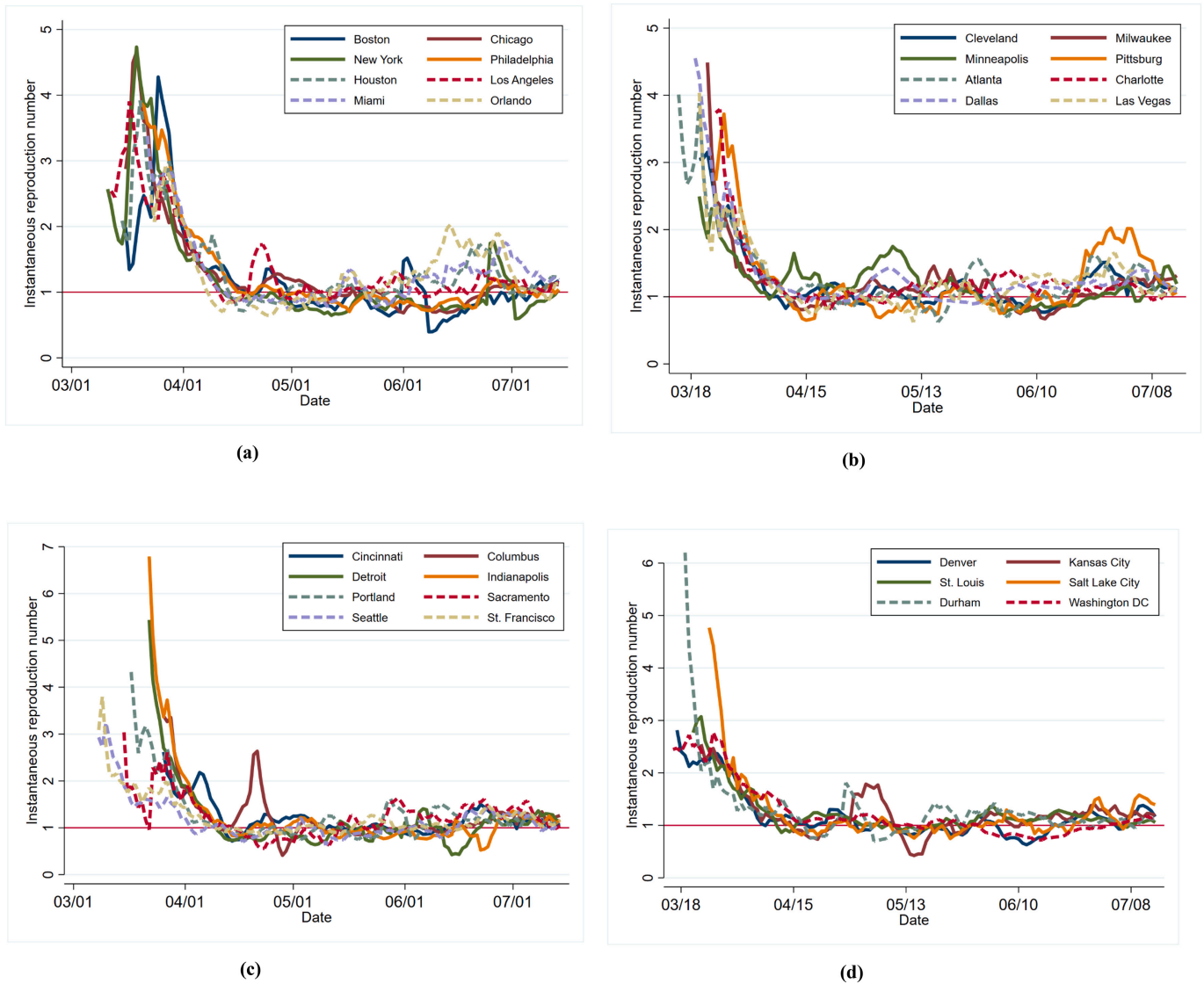


Fig. 1. a-d: Time trends of instantaneous reproduction number for 30 US largest metropolitan areas.

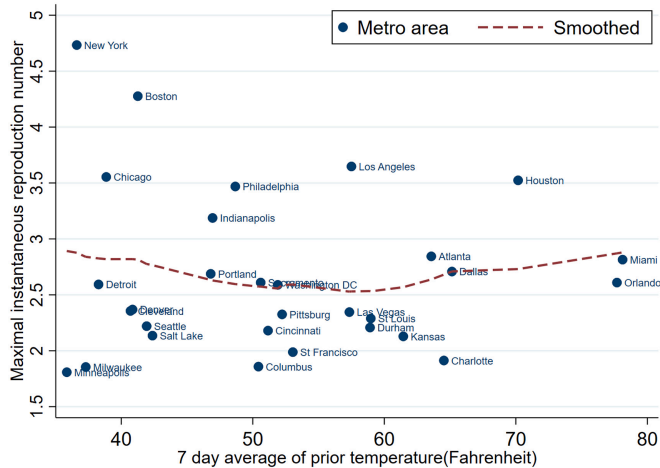


Fig. 2. Association between maximal reproduction number and 7-day average temperature among US 30 metropolitan areas.

cities like Pittsburg and Detroit had much higher R_t at the beginning, and R_t declined later. Even for cities like Chicago and New York, the intervention effects were evident based on the sharp decline of R_t since the mid-March, despite they had much higher R_s in the beginning of epidemic.

It has been suggested that like many other respiratory virus infections, a seasonal pattern may exist for SARS like coronavirus [26,27]. However, as demonstrated in this study, the association between reproduction number and temperature was deeply confounded by interventions and other external factors (including altitudes and humidity). In this study, we found the peak R_s in warm cities were moderately lower on average than those in cold cities, suggesting that the virus transmissibility might be lower in warm temperature than cold temperature.

However, our analysis warned readers about interpreting selective findings. For emerging pandemic like COVID-19, many things were happening simultaneously. Effective interventions such as travelling restriction, social distancing and stay-at-home rules will change the epidemic process [25,28,29]. The availability of testing, diverse case ascertainment criteria, the delay of diagnosis and case isolation, incomplete contact tracing, the percent of asymptomatic cases, and the infectivity of pre-symptomatic and asymptomatic cases will profoundly affect our ability to understand the epidemic. In this study, we observed

some small but possible negative association between temperature and virus transmissibility (Fig. 1a and 2). However, there were large variations in the peak R_t s among regions with lower temperature, partly due to different intervention effects and also might be due to cultural and social differences. It is also likely that other environmental factors such as living conditions may affect virus transmission. For example, under cold weather, most people will stay indoors and have close and more frequent contacts with other people. The indoor environment such as air conditioning may be conducive for virus transmission.

Furthermore, the concurrent decline of R_t and increase of temperature over time are also confounded by the epidemic process itself. As suggested before, a significant reduction of susceptible people will lead to a decline of R_t . Longitudinally comparing the trend of R_t and temperature is difficult if the epidemic evolves rapidly, as in the current COVID-19 pandemic. For instance, from March to April, all the epidemic in the 30 metropolitan areas had a sharp decline, while the temperature in the whole US was still amenable for virus transmission.

There were some limitations in our study. The most important limitation was the inability to account for the diverse detection capacities across regions (Appendix Table 1). In regions with lower detection capacity, not only were there fewer cases detected (especially missing those with no or mild symptoms), but also the eligibilities for detection were more stringent. Only those with symptoms might be offered for virus detection. Thus, a sudden increase in case counts might not be due to an actual increase of infected people, rather it reflected the increased availability of detection kits. This was the main reason we had highly variable estimates of R_t in the beginning of epidemic, and also some small rebounds in some areas after April 15. Additionally, with more detection kits available, we will observe more asymptomatic or mild symptomatic cases. Our methods assumed the same virus infectivity between symptomatic and asymptomatic cases, which was likely not true.

Methodologically, our estimation of R_t relied on many assumptions. R_t is determined by both the growth rate of new cases and the distribution of generation interval or serial interval [10]. We assumed a universal distribution of serial interval for all regions and over the whole time period. Serial interval may change due to interventions, regional characteristics, and the stage of epidemic. More stringent interventions and stay-at-home rules may result in shorter serial interval because the transmission will likely occur inside the households.

We were not able to rigorously evaluate the virulence of SARS-CoV-2. Although we briefly compared death rates across regions, due to large and unknown delays between virus infection and deaths in the US, most deaths would be diagnosed several weeks before. There was also a delay in death certifications. Additionally, most died cases were elderly people or those with existing chronic conditions. Therefore, assessing the virulence should untangle the confounding effects by health care resource capacities, evolving treatments, and patient's characteristics. A possible measure of virulence is the pattern of hospitalizations, as they are less likely affected by the availability of detection. After more hospitalization data are available and more asymptomatic and mild symptomatic cases are diagnosed, future research should focus on the impact of epidemic on the severity of disease and health care resource uses instead of the magnitude of epidemic.

In addition, as mentioned before, secondary data analysis based on existing aggregated data suffer many types of unmeasured confounding.

Appendix

Appendix Table 1

Our data were collected by journalists which might lack scientific rigor. However, as stated in the New York Times data website, data were scraped from data portal such as those John Hopkins University COVID-19 data portal, state COVID-19 portal and various press conferences, and verified against each State Health Department. Nonetheless, although the quality of New York Times data was considered acceptable, the data were hastily collected and little validation was done. Biased data might lead to biased conclusions and wrong governmental decisions. We should call for replicated analysis based on more rigorously collected and validated data. Thus, our analyses were mostly descriptive and deliberately avoided over-interpretations through numerous comparisons between regions. A careful exploration of validated individual level data may shed some lights on these issues.

Finally, our study has some unique strengths. First, we focus on large metropolitan areas to ensure enough cases and to have comparable societal structure, individual behaviors and health care resources. Certainly, epidemic in non-metropolitan areas should also be studied and may have unique patterns different from that of metropolitan areas. Epidemic in rural areas was of particular concern recently as rural areas often had limited health care resources to cope with the epidemic. Second, we explored the changes of effective reproduction number (R_t) over time and across regions to understand the impact of interventions and temperature on virus transmissibility. We presented and compared all regions to avoid selective reporting bias. To study the association between temperature and the epidemic process, we focus on the comparisons of R_t at the peak of outbreak and before interventions, presumably less confounded by interventions and other factors.

In summary, we observed a large decline of instantaneous reproduction numbers over time during the COVID-19 pandemic in 30 US metropolitan areas, the timing of which was concurrent with the implementation of mitigating interventions. Given that the whole population were naïve in immunity against this virus, it was likely the epidemic might last longer and more severe without interventions [25]. In addition, there was a possible weak negative association between instantaneous reproduction number and temperature. However, as shown in the Fig. 1, the virus infection was rampant in some southern areas where the interventions were relaxed during the summer, suggesting that interventions were critical in halting the pandemic. Given that the R_t s remained around 1 for most areas since later April and the virus is circulating in both northern and southern hemisphere, we need to be vigilant about a possible second wave of outbreak later of the year.

Author statement

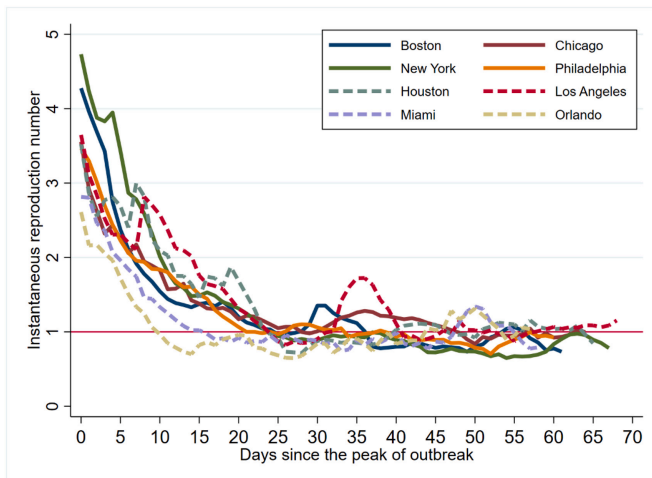
Dr. Xinhua Yu conceptualize the study, conduct data analysis and write the reports.

Declaration of Competing Interest

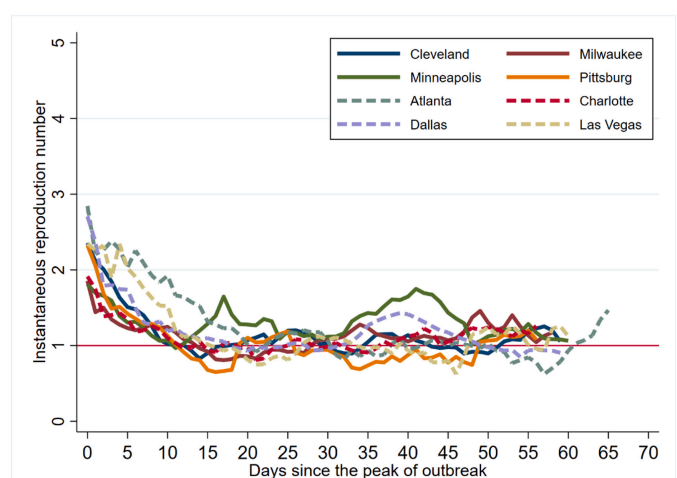
In this study, the author has no financial and conflict of interest to disclose. The ethics approval was exempted for this study, as no human subjects were involved, and all data were publicly available. The statistical codes and data will be available online (<https://tinyurl.com/ybhdcjqu>).

Positive detection rates at various time by state.

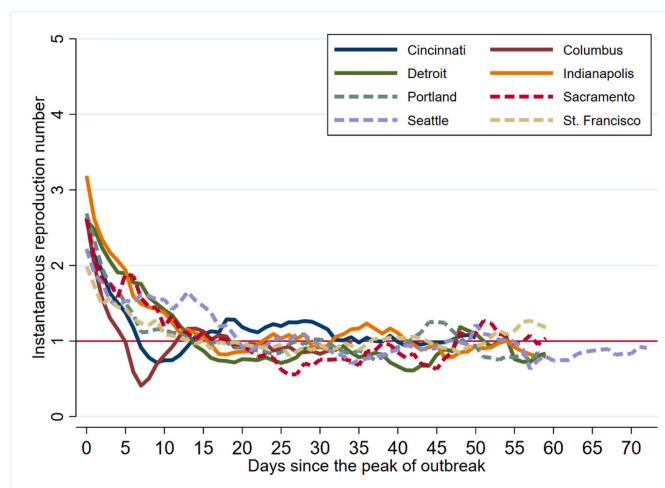
State	Metro areas	%positive as of March 25, 2020	%positive as of April 15, 2020	Date of stay at home rule	% positive at rule mandating
CA	Los Angeles, St. Francisco-St. Jose, Sacramento-Oakland	12.9%	10.6%	19-Mar-20	9.5%
CO	Denver	11.8%	20.4%	11-Apr-20	19.9%
DC	Washington DC - Baltimore	11.4%	19.3%	1-Apr-20	15.2%
FL	Miami-Fort Lauderdale, Orlando	9.9%	10.4%	3-Apr-20	10.5%
GA	Atlanta	20.2%	23.1%	2-Apr-20	23.3%
IL	Chicago	13.1%	21.0%	21-Mar-20	12.1%
IN	Indianapolis	14.2%	18.7%	24-Mar-20	12.5%
KS	Kansas	5.1%	9.9%	30-Mar-20	7.5%
MA	Boston	9.3%	22.9%	24-Mar-20	8.4%
MI	Detroit	48.4%	31.0%	24-Mar-20	52.6%
MN	Minneapolis-St. Paul	2.5%	4.6%	27-Mar-20	2.8%
MO	St. Louis	49.1%	10.1%	3-Apr-20	9.8%
NC	Durham-Raleigh, Charlotte	4.8%	7.7%	30-Mar-20	6.3%
NV	Las Vegas	7.0%	11.7%	1-Apr-20	10.0%
NY	New York	29.8%	40.4%	22-Mar-20	24.7%
OH	Cleveland, Columbus, Cincinnati	4.8%	11.2%	22-Mar-20	71.5%
OR	Portland	4.6%	5.0%	23-Mar-20	5.0%
PA	Philadelphia, Pittsburg	9.1%	19.6%	1-Apr-20	12.0%
TX	Houston, Dallas-Fort Worth	7.2%	10.4%	2-Apr-20	9.2%
UT	Salt Lake City	5.1%	5.4%	27-Mar-20	5.2%
WA	Seattle	9.4%	8.7%	23-Mar-20	7.8%
WI	Milwaukee	5.5%	8.6%	25-Mar-20	5.5%



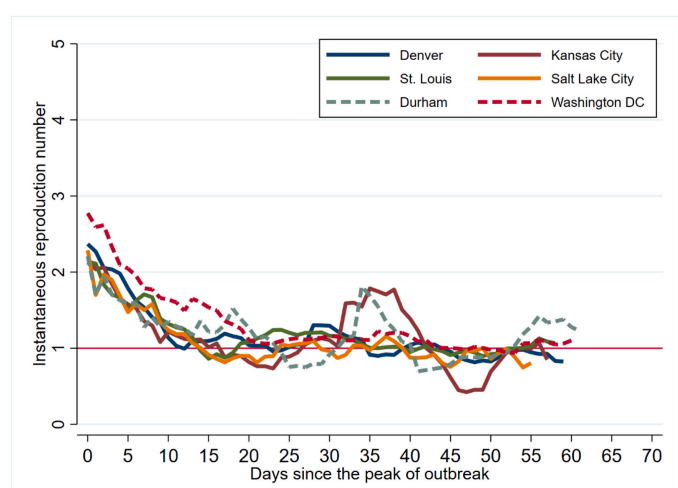
(a)



(b)

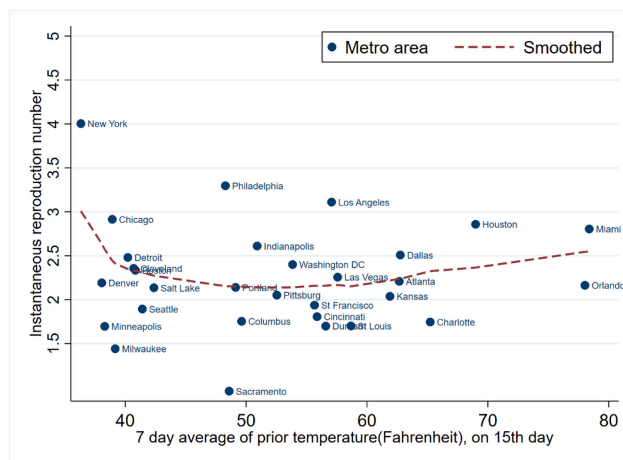


(c)

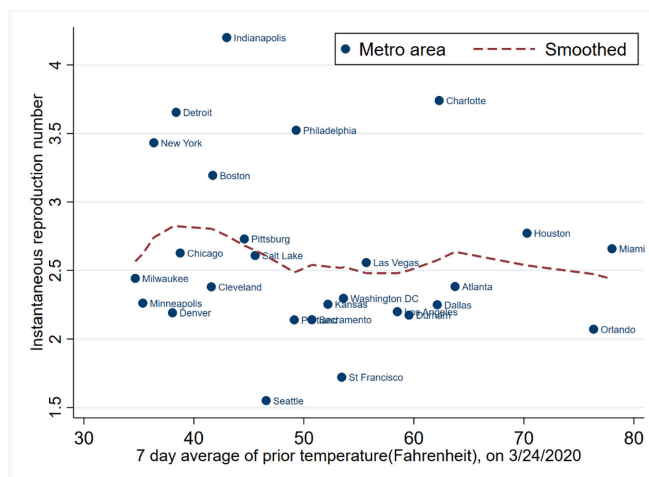


(d)

Appendix Fig. 1. a – d, Declining trend of instantaneous reproduction number over time after the peak of epidemic, US 30 metropolitan areas.



(a)



Appendix Fig. 2. a-b: Variations of instantaneous reproduction numbers across 30 US metropolitan areas.

References

[1] N. Zhu, D. Zhang, W. Wang, X. Li, B. Yang, J. Song, et al., A novel coronavirus from patients with pneumonia in China, 2019, *N. Engl. J. Med.* 382 (8) (2020) 727–733.

[2] P.R. Center, Most Americans Say Coronavirus Outbreak Has Impacted Their Lives, March [cited 2020 June 18]; Available from, 2020. <https://www.pewsocialtrends.org/2020/03/30/most-americans-say-coronavirus-outbreak-has-impacted-their-lives/>.

[3] J.S. Peiris, K.Y. Yuen, A.D. Osterhaus, K. Stohr, The severe acute respiratory syndrome, *N. Engl. J. Med.* 349 (25) (2003) 2431–2441.

[4] Q. Li, X. Guan, P. Wu, X. Wang, L. Zhou, Y. Tong, et al., Early transmission dynamics in Wuhan, China, of novel coronavirus-infected pneumonia, *N. Engl. J. Med.* 382 (13) (2020) 1199–1207.

[5] C. Fraser, S. Riley, R.M. Anderson, N.M. Ferguson, Factors that make an infectious disease outbreak controllable, *Proc. Natl. Acad. Sci. U. S. A.* 101 (16) (2004) 6146–6151.

[6] C. Li, F. Ji, L. Wang, L. Wang, J. Hao, M. Dai, et al., Asymptomatic and human-to-human transmission of SARS-CoV-2 in a 2-family cluster, Xuzhou, China, *Emerg. Infect. Dis.* 26 (7) (2020).

[7] Y. Bai, L. Yao, T. Wei, F. Tian, D.Y. Jin, L. Chen, et al., Presumed asymptomatic carrier transmission of COVID-19, *JAMA* 323 (14) (2020) 1406–1407, <https://doi.org/10.1001/jama.2020.2565>.

[8] M. Lipsitch, D.L. Swerdlow, L. Finelli, Defining the epidemiology of Covid-19 - studies needed, *N. Engl. J. Med.* 382 (13) (2020) 1194–1196.

[9] H.W. Hethcote, The mathematics of infectious diseases, *SIAM Rev.* 42 (4) (2000) 54.

[10] J. Wallinga, M. Lipsitch, How generation intervals shape the relationship between growth rates and reproductive numbers, *Proc. Biol. Sci.* 274 (1609) (2007) 599–604.

[11] A. Cori, N.M. Ferguson, C. Fraser, S. Cauchemez, A new framework and software to estimate time-varying reproduction numbers during epidemics, *Am. J. Epidemiol.* 178 (9) (2013) 1505–1512.

[12] B.J. Cowling, L.M. Ho, G.M. Leung, Effectiveness of control measures during the SARS epidemic in Beijing: a comparison of the Rt curve and the epidemic curve, *Epidemiol. Infect.* 136 (4) (2008) 562–566.

[13] S. Cauchemez, P. Nouvellet, A. Cori, T. Jombart, T. Garske, H. Clapham, et al., Unraveling the drivers of MERS-CoV transmission, *Proc. Natl. Acad. Sci. U. S. A.* 113 (32) (2016) 9081–9086.

[14] P.A. Gastanaduy, S. Funk, P. Paul, L. Tatham, N. Fisher, J. Budd, et al., Impact of public health responses during a measles outbreak in an Amish Community in Ohio: Modeling the dynamics of transmission, *Am. J. Epidemiol.* 187 (9) (2018) 2002–2010.

[15] J. Zhang, M. Litvinova, W. Wang, Y. Wang, X. Deng, X. Chen, et al., Evolving epidemiology and transmission dynamics of coronavirus disease 2019 outside Hubei province, China: a descriptive and modelling study, *Lancet Infect. Dis.* 20 (7) (JULY 01, 2020) P793–P802.

[16] B.J. Cowling, S.T. Ali, T.W.Y. Ng, T.K. Tsang, J.C.M. Li, M.W. Fong, et al., Impact assessment of non-pharmaceutical interventions against coronavirus disease 2019 and influenza in Hong Kong: an observational study, *Lancet Public Health* 5 (5) (MAY 01, 2020) E279–E288.

[17] S. Pawar, A. Stanam, M. Chaudhari, D. Rayudu, Y. University (Ed.), Effects of Temperature on COVID-19 Transmission, 2020.

[18] M. Bannister-Tyrrell, A. Meyer, C. Faverjon, A. Cameron, Preliminary evidence that higher temperatures are associated with lower incidence of COVID-19, for cases reported globally up to 29th February 2020, medRxiv (2020) (2020.03.18.20036731).

[19] M. Trolett, Evidence that Higher Temperatures are Associated with Lower Incidence of COVID-19 in Pandemic State, Cumulative Cases Reported up to March 27, 2020, (2020).

[20] R.N. Thompson, J.E. Stockwin, R.D. van Gaalen, J.A. Polonsky, Z.N. Kamvar, P.A. Demarsh, et al., Improved inference of time-varying reproduction numbers during infectious disease outbreaks, *Epidemics* 29 (2019) 100356.

[21] H. Nishiura, N.M. Linton, A.R. Akhmetzhanov, Serial interval of novel coronavirus (COVID-19) infections, *Int. J. Infect. Dis.* 93 (2020) 284–286.

[22] S.A. Lauer, K.H. Grantz, Q. Bi, F.K. Jones, Q. Zheng, H.R. Meredith, et al., The incubation period of coronavirus disease 2019 (COVID-19) from publicly reported confirmed cases: estimation and application, *Ann. Intern. Med.* 172 (9) (2020 May 5) 577–582, <https://doi.org/10.7326/M20-0504>.

[23] Z. Du, X. Xu, Y. Wu, L. Wang, B.J. Cowling, L.A. Meyers, Serial interval of COVID-19

- among publicly reported confirmed cases, *Emerg. Infect. Dis.* 26 (6) (2020).
- [24] S. Garg, L. Kim, M. Whitaker, A. O'Halloran, C. Cummings, R. Holstein, et al., Hospitalization rates and characteristics of patients hospitalized with laboratory-confirmed coronavirus disease 2019 - COVID-NET, 14 states, march 1-30, 2020, *MMWR Morb. Mortal. Wkly Rep.* 69 (15) (2020) 458–464.
- [25] N. Ferguson, D. Laydon, G. Nedjati Gilani, N. Imai, K. Ainslie, M. Baguelin, et al., Report 9: Impact of Non-Pharmaceutical Interventions (NPIs) to Reduce COVID-19 Mortality and Healthcare Demand, Imperial College, UK, 2020.
- [26] K. Lin, D.-T. Fong, Z. Biliu, K. Johan, Environmental factors on the SARS epidemic: air temperature, passage of time and multiplicative effect of hospital infection, *Epidemiol. Infect.* 134 (2) (2005) 7.
- [27] P. Shi, Y. Dong, H. Yan, X. Li, C. Zhao, W. Liu, et al., The impact of temperature and absolute humidity on the coronavirus disease 2019 (COVID-19) outbreak - evidence from China, *medRxiv* (2020) (p. 2020.03.22.20038919).
- [28] M. Chinazzi, J.T. Davis, M. Ajelli, C. Gioannini, M. Litvinova, S. Merler, et al., The effect of travel restrictions on the spread of the 2019 novel coronavirus (COVID-19) outbreak, *Science* 368 (6489) (2020 Apr 24) 395–400, <https://doi.org/10.1126/science.aba9757>.
- [29] J. Hellewell, S. Abbott, A. Gimma, N.I. Bosse, C.I. Jarvis, T.W. Russell, et al., Feasibility of controlling COVID-19 outbreaks by isolation of cases and contacts, *Lancet Glob. Health* 8 (4) (2020) e488–e496.