



## Correction

Article title: The BCL2L1 and PGAM5 axis defines hypoxia-induced receptor-mediated mitophagy

Authors: Hao Wu, Danfeng Xue, Guo Chen, Zhe Han, Li Huang, Chongzhuo Zhu, Xiaohui Wang, Haijing Jin, Jun Wang, Yushan Zhu, Lei Liu & Quan Chen

Journal: *Autophagy*

Bibliometrics: Volume 10, Issue 10, Pages 1712-1725

DOI: 10.4161/auto.29568.

In the original version of this article, the western blot of TOMM20 and TIMM23 in Fig. 1C was a mistaken duplicate of that in Fig. 2C (the last 6 bands), and the grayscale values of TIMM23 are incorrectly covered by a duplicate of grayscale values of TOMM20 in Fig. 2C, which were generated inadvertently during the figure organization. This error has now been corrected as shown below, and this correction has not changed the description, interpretation, or the original conclusions of the manuscript. The authors apologize for any inconvenience caused.

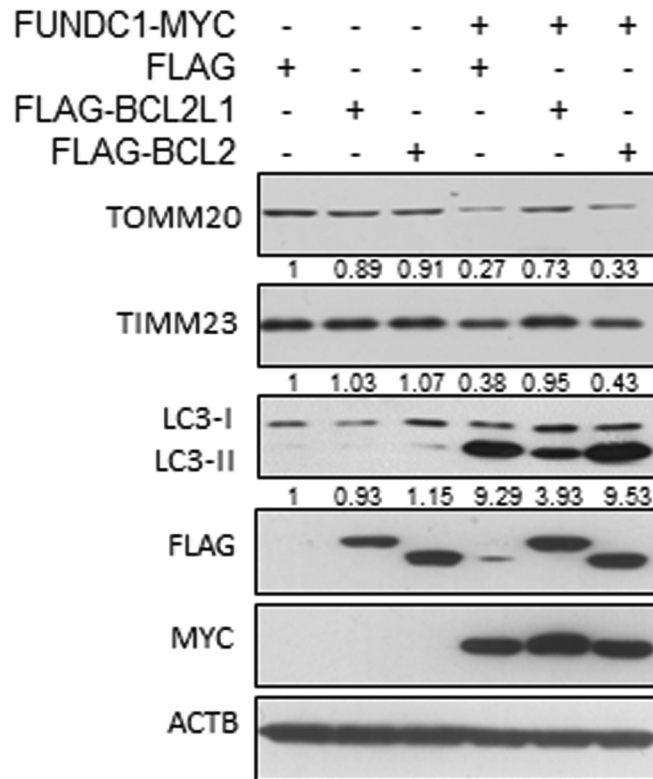


Fig. 1C

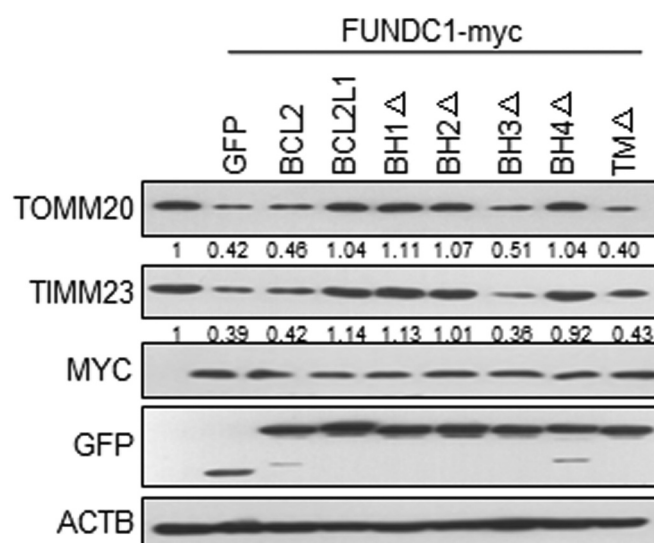


Fig. 2C