

# A comprehensive rat transcriptome built from large scale RNA-seq-based annotation

Xiangjun Ji<sup>1,2</sup>, Peng Li<sup>1,3</sup>, James C. Fuscoe<sup>4</sup>, Geng Chen<sup>1</sup>, Wenzhong Xiao<sup>3</sup>, Leming Shi<sup>5</sup>, Baitang Ning<sup>4</sup>, Zhichao Liu<sup>4</sup>, Huixiao Hong<sup>4</sup>, Jun Wu<sup>1</sup>, Jinghua Liu<sup>2</sup>, Lei Guo<sup>4</sup>, David P. Kreil<sup>6</sup>, Paweł P. Łabaj<sup>6,7</sup>, Liping Zhong<sup>8</sup>, Wenjun Bao<sup>9</sup>, Yong Huang<sup>8</sup>, Jian He<sup>8</sup>, Yongxiang Zhao<sup>8,\*</sup>, Weida Tong<sup>4,\*</sup> and Tielu Shi<sup>1,10,\*</sup>

<sup>1</sup>Center for Bioinformatics and Computational Biology, Institute of Biomedical Sciences and School of Life Sciences, East China Normal University, Shanghai 200241, China, <sup>2</sup>School of Basic Medical Sciences, Southern Medical University, Guangzhou, 510515, China, <sup>3</sup>Massachusetts General Hospital, Harvard Medical School, 51 Blossom St, Boston, MA 02114, USA, <sup>4</sup>National Center for Toxicological Research, Food and Drug Administration, Jefferson, AR, 72079, USA, <sup>5</sup>Center for Pharmacogenomics, School of Pharmacy, Fudan University, Shanghai, 200438, China, <sup>6</sup>Department of Biotechnology, Boku University Vienna, 1190 Muthgasse 18, Austria, <sup>7</sup>Małopolska Centre of Biotechnology, Jagiellonian University, ul. Gronostajowa 7A, 30-387 Kraków, Poland, <sup>8</sup>Biological Targeting Diagnosis and Therapy Research Center, Guangxi Medical University, Nanning 530021, China, <sup>9</sup>SAS Institute Inc., Cary, NC, 27513, USA and <sup>10</sup>Beijing Advanced Innovation Center for Big Data-Based Precision Medicine, Beihang University & Capital Medical University, Beijing, 100083, China

Received November 24, 2019; Revised July 14, 2020; Editorial Decision July 19, 2020; Accepted July 21, 2020

## ABSTRACT

**The rat is an important model organism in biomedical research for studying human disease mechanisms and treatments, but its annotated transcriptome is far from complete. We constructed a Rat Transcriptome Re-annotation named RTR using RNA-seq data from 320 samples in 11 different organs generated by the SEQC consortium. Totally, there are 52 807 genes and 114 152 transcripts in RTR. Transcribed regions and exons in RTR account for ~42% and ~6.5% of the genome, respectively. Of all 73 074 newly annotated transcripts in RTR, 34 213 were annotated as high confident coding transcripts and 24 728 as high confident long noncoding transcripts. Different tissues rather than different stages have a significant influence on the expression patterns of transcripts. We also found that 11 715 genes and 15 852 transcripts were expressed in all 11 tissues and that 849 house-keeping genes expressed different isoforms among tissues. This comprehensive transcriptome is freely available at <http://www.unimd.org/rtr/>. Our new rat transcriptome provides essential reference for genetics and gene expression studies in rat disease and toxicity models.**

## INTRODUCTION

The rat (*Rattus norvegicus*) is utilized extensively as an animal model for studying human disease mechanisms and treatments. As an example, for toxicological studies, Gene Expression Omnibus (GEO) (1,2) currently hosts 1964 datasets using the rat model, the most among all species, followed by 1323 datasets for human. However, despite efforts to improve the annotation of the rat transcriptome based on cDNA and EST sequences, our knowledge on the transcriptome of rat is far from complete when compared with that of human and mouse.

RNA-seq technology enables an unbiased and in-depth analysis of the genome and transcriptome (3). Studies based on RNA-seq have revealed the complexity of the transcriptomes of eukaryotes (4,5) and have shown that many transcripts have escaped our observation. Examples include: much of the genome is transcribed, including the regions that were previously considered as junk DNAs; novel splice junctions were detected, demonstrating distinct splice sites and intricate patterns of alternatively spliced RNAs that may play important roles in the regulation and expression of the complex eukaryotic genome (5,6); most multi-exon genes are shown to have multiple alternatively spliced isoforms with different coding potentials.

Nowadays, RNA-seq provides direct RNA level resources for comprehensive transcriptome annotation with

\*To whom correspondence should be addressed. Tel: +86 21 54345020; Fax: +86 21 54345020; Email: tlshi@bio.ecnu.edu.cn  
Correspondence may also be addressed to Weida Tong. Tel: +1 870 5437142; Fax: +1 870 5437142; Email: Weida.Tong@fda.hhs.gov  
Correspondence may also be addressed to Yongxiang Zhao. Tel: +86 771 5350964; Fax: +86 771 5352775; Email: yongxiang.zhao@126.com  
**Disclaimer:** The findings and conclusions in this report are those of the authors and do not necessarily represent the views of the FDA.

high sequencing depth and different types of samples and thus has been integrated into traditional annotation pipelines including Ensembl (7), ENCODE (8) and PASA (9,10). For example, the transcriptomes of zebrafish, human and fission yeast released by Ensembl, ENCODE (11), AceView (12) and Broad Institute (13), respectively, have been re-annotated with RNA-seq analysis.

Nevertheless, it is still challenging to construct a comprehensive transcriptome in the context of current RNA-seq data quality and computational methods. Generally, transcriptome reconstruction strategies with RNA-seq data fall into two categories, genome-independent and genome-guided. Genome-independent methods are preferred when the target organisms do not have a complete reference sequence, whereas genome-guided approaches, with their increased sensitivity in detecting transcripts, are used for annotating organisms with a reference genome (14,15). In addition, various pipelines and softwares have been published for transcriptome reconstruction, but they have limited compatibility (16), with notable inconsistencies of results. Hence, only a few software tools, data resources or analysis results based on large-scale RNA-seq technology are available for reusing in rat transcriptome analysis.

To generate a rat transcriptome with high resolution, we analyzed the rat BodyMap RNA-seq data generated by the SEQC consortium that consists of 320 deep-sequenced samples (>40 M reads per sample) from 11 different tissues (17,18). By carefully tuning the reconstruction pipeline, we obtained a relatively complete and reliable set of rat transcripts that was used to create a re-annotated transcriptome database and functional annotations comparable to that of the well-annotated mouse transcriptome. We confirmed the accuracy and reliability of RTR by comparing five other datasets derived from the same organs in RTR.

## MATERIALS AND METHODS

### Data source

The RNA-seq data were obtained from the rat RNA-seq transcriptomic BodyMap across 11 tissues, 4 developmental stages and both sexes generated by the SEQC consortium (*R. norvegicus*, strain: F344; GEO dataset: GSE53960) (17). Samples were prepared by Ribo-zero protocol. There are four biological replicates in each condition, i.e. samples sharing the same organ, the same development and the same sex. All of the datasets used for checking the precision of RTR were downloaded from the Sequence Read Archive (SRA) at NCBI (<https://www.ncbi.nlm.nih.gov/sra>) (Supplementary Tables S1 and 15) (19). The gene annotations of *Rnor6* were obtained from the Ensembl database (version 97) (7), RGD (20), RefSeq (version 95) (21). The gene annotation of *GRCh38/hg38* was obtained from the Ensembl database (version 97). The gene annotation of *GRCm38/mm10* was obtained from the Ensembl database (version 97).

### RNA-seq read alignment and transcript assembly pipeline

The pipeline is depicted as a flowchart in Supplementary Figure S3. All RNA-seq short reads were first aligned to rat reference genome (*rnor6*) by HISAT2 (22). The aligned

reads were assembled using two methods, Stringtie (23) and QuaPra (24), respectively. Post this initial assembly, we used Cuffcompare in Cufflinks suite to acquire common multi-exon transcripts in at least two biological replicates with FPKM > 1 in the same condition. If a novel multi-exon transcript found in only one replicate covers all the introns of another novel transcript which was found in at least two biological replicates with FPKM > 1 in the same strand, then the former transcript which obtained more exons was retained and the latter one was abandoned. A mono-exon transcript was defined as the one that the transcript should be detected in all four biological replicates with FPKM > 1 and then the leftmost 5' end and rightmost 3' end of these copies from four biological replicates are the boundary of the transcript. To obtain a tissue-specific transcriptome, the common transcripts in all four biological replicates from the same condition were merged using Stringtie-merge and only transcripts longer than 200 bp were retained. The common transcripts in all conditions were then merged using Stringtie-merge. The two transcriptomes derived by Stringtie and QuaPra were merged again. We then combined transcripts which were derived in the previous step with all the transcripts in Ensembl and RefSeq together into RTR. The performance of Stringtie and QuaPra are shown in Supplementary Figure S4, which indicates the consistency and complementarity between the two assemblers.

### Selection of newly annotated coding and noncoding transcripts with high confidence

In RTR, we predicted the transcript coding ability by incorporating three methods together: (i) CPAT (25), (ii) Pfam (26) and (iii) BLASTx (27). A newly annotated transcript in RTR was defined as a coding transcript with high confidence which simultaneously had a coding score greater than the cutoff in CPAT, had at least one Pfam domain and had high similarity with at least one known protein in all organisms in UniProtKB/Swiss-Prot where the similarity was estimated by BLASTx (*e*-value < 1e-5). Similarly, if a newly annotated transcript failed all of the three tests, it was then considered as a noncoding transcript with high confidence.

### Evidence for active regulation of transcriptional start sites

To conduct analysis of transcription start site (TSS) intervals, we downloaded the H3K4me3 ChIP-seq peak enrichment file (BED format) for the male liver at 9 weeks in rat (28). Intervals of  $\pm 10$  kb surrounding unique TSSs of transcripts in Ensembl and the newly assembled transcripts with high confidence were generated using the BEDTools slop tool (29). To control for expression, TSSs were filtered to remove transcripts not expressed in male liver at 6 weeks in rat (FPKM < 0.5). Base-wise peak coverage was generated using the BEDTools coverage function and summed per-base coverage histogram was normalized by dividing by the number of expressed TSSs.

### Identification of conserved splice junctions of RTR in human and mouse

Only transcripts with splice junctions were aligned. We used Needle in EMBOSS (30) to align the fragments close to

novel junctions in coding transcripts with high confidence in rat to the fragments close to the junctions in the corresponding homologous genes in human and mouse, respectively (a region encompassing the nucleotides  $-6$  to  $+6$  relative to the splice junction was considered as 'close'). Alignments were rejected in three cases: (i) there was more than one gap occurring close to the splice junction; (ii) when the junction in the transcript in human or mouse was not in the coding region, we used nucleotide alignment mode and matches with nucleotide identity  $<80\%$  were rejected; (iii) when the junction in the transcript in human or mouse was in the coding region, we used protein alignment mode and matches with protein identity  $<80\%$  or protein similarity  $<90\%$  were rejected (physico-chemical properties of amino acid residues were used to assign similar residues: aliphatic, I, L, V; aromatic, F, Y, W, H; positive, H, K, R; negative, D, E; and tiny, A, C, T, S, G).

### Repetitive element analysis in RTR

RepeatMasker annotation for rat genome (rnor6 assembly) was downloaded from the UCSC database (31,32). intersectBed in BEDTools suite (33) was used to search the overlap between transposable elements (TEs) and exons. Anything that was not classified as a TE (such as low complexity, satellites and simple repeats) was removed from further analysis.

### Differential gene expression analysis and differential AS analysis

Pure read counts were extracted from the alignment files using featureCounts v2.0.1 (34). Genes which were considered to be expressed in at least one biological condition (i.e. a stage and tissue) (FPKM  $> 0.5$ ) were retained. Subsequent differential gene expression analyses were performed using DESeq2 v1.20.0 guided by the RTR transcriptome (35).

rMATS v4.0.2 was used to screen differential AS events across different samples (36). The aligned data were run on rMATS for AS analysis. Then we calculated the differential AS events with the threshold of  $|\Delta\text{Percent spliced in (PSI)}| > 0.05$  and FDR  $< 0.05$ .

## RESULTS

### Re-annotated rat transcriptome

The characteristics of Rat Transcriptome Re-annotation (RTR) dataset and related known rat and mouse annotation resources are shown in Table 1, including the number of genes and transcripts, the size of transcribed region and the number and size of exons. By comparing the Ensembl transcript data between rat and mouse, it can be seen that the annotation of rat is much less complete than mouse in terms of both transcribed regions and exon regions. More than 55 000 genes and 140 000 transcripts are annotated in Mouse Ensembl release 97, while only  $\sim 32$  000 genes and 41 000 transcripts have been annotated in Rat Ensembl release 97. In contrast, our newly annotated rat transcriptome, RTR, identifies 52 807 genes and 114 152 transcripts, representing a substantial improvement over current rat transcriptome

databases (Table 1, <http://119.3.41.228:8888/static/RTR.gtf.gz>).

By incorporating the publicly available data resources (Ensembl (7), RefSeq (21)) with our RNA-seq data, we found that  $\sim 42\%$  of genomic regions were transcribed and  $\sim 6.5\%$  of genomic regions were identified as exon regions in the resulting RTR transcriptome. Although the length of transcribed regions in RTR is only slightly longer than that in RGD (<https://rgd.mcw.edu/>) which previously was the most comprehensive rat transcriptome (20), the sum of the identified exon region bases in RTR is twice as large as that in RGD. Additionally, the number of rat transcripts in the re-annotated transcriptome is 114 152, which is 2.78 times as large as that in Rat Ensembl (41 078) and comparable to that of the latest mouse annotations.

To confirm the authenticity of RTR, we checked the precision of multi-exon transcripts in five other datasets downloaded from the Sequence Read Archive (SRA) (<https://www.ncbi.nlm.nih.gov/sra>) (19). The five selected datasets correspond to organs overlapping those of the 320 samples in the SEQC consortium. We defined precision as the percentage of predicted transcripts in the five datasets that matched the transcripts in the corresponding tissues in RTR, respectively. The precision in each dataset is higher than 97% (Supplementary Table S1). There are 4638 transcripts longer than 200 bp in known databases (Ensembl, RefSeq, RGD) that were not found in the 320 samples in the SEQC consortium. Intriguingly, function analysis for these uncovered annotated transcripts implied that 856 of these transcripts are involved in the biological process of olfactory receptor using a hypergeometric test (Bonferroni-adjusted,  $P$ -value  $< 0.05$ ) with data in Gene Ontology (37). Most of the 4638 transcripts were also not found in the five other datasets (Supplementary Table S1).

### More detected novel junction sites

Similar to the exome level data, 266 182 junctions were detected in this BodyMap data, which was over 1.33 times more than found in Ensembl. Unexpectedly, the junctions detected in the 320 samples were quite differently distributed than in other annotation databases (RGD, Ensembl and RefSeq). While splice junctions detected in this BodyMap data identified 94.4 and 93.3% of splice junctions in Ensembl and RefSeq, respectively, only 81.7% of junctions in RGD were identified, suggesting a higher proportion of unique splice junction candidates in the RGD database.

We also investigated the splice patterns of novel junctions. Splice junctions were generally flanked by a canonical GT-AG sequence and 97.18% of splice junctions in the RTR database showed this signature. In other words, the splicing sites in our identified novel junctions showed more canonical splicing patterns than the existing Ensembl database (93.3%).

### More identified alternative isoforms and splicing events

Analysis of the BodyMap data revealed a much greater extent of alternative transcripts than previous annotations. There are 73 074 newly annotated transcripts in RTR, 48



**Table 1.** Summary of four rat transcriptome datasets (RTR, RGD, rat in RefSeq (version 95), Rat Ensembl release (version 97)) and Mouse Ensembl release (version 97)

	RTR	RGD	Rat in RefSeq	Rat Ensembl v97	Mouse Ensembl v97
Total number(G/T)	52 807/114 152	41 293/71 746	17 347/19 005	32 883/41 078	55 573/142 333
Transcribed region (bases)	1 210 629 410	1 146 889 108	745 274 636	866 345 921	1 166 497 934
Transcribed region ratio	0.422	0.400	0.260	0.302	0.427
Exon number	383 460	294 311	166 150	240 383	413 177
Exon region (bases)	189 460 026	93 815 592	39 838 763	56 335 223	116 671 536
Exon region ratio	0.066	0.032	0.014	0.020	0.043

*G* genes; *T* transcripts.

013 transcripts of which belong to 14 185 genes in Ensembl. As a result, the ratio of transcripts belonging to genes in Ensembl to the genes themselves increases from the original 1.30 to 2.71 in RTR. There are 19 924 newly annotated genes in RTR, and the ratio of transcripts in newly annotated genes to the newly annotated genes themselves is 1.26, which is comparable to the one in the known annotation in Ensembl (1.25).

As shown in Figure 1A, 34.3% of rat genes in RTR have more than one isoform (multi-isoform genes), which is at an equivalent level to that of Mouse Ensembl release (version 97), while in Ensembl only 15.4% of rat genes have more than one isoform. In addition, rat multi-isoform genes in RTR have 4.39 isoforms on average, which is at an equivalent level to that of the mouse annotation of Ensembl (4.45), while in Ensembl rat multi-isoform genes have only 2.41 isoforms in average. Furthermore, the percent of rat genes with at least three isoforms in RTR (22.1%) is over six times as large as the one in Rat Ensembl release (version 97) (3.5%).

We further used ASTALAVISTA (38) to characterize these alternative splicing (AS) events into seven different categories: intron retention (IR), skipped exon (SE), alternative 5' donor site (A5SS), alternative 3' acceptor site (A3SS), alternative first exon, alternative last exon and mutually exclusive exons (MXE). The distribution of different AS events is similar between RTR (Figure 1B) and Ensembl (Supplementary Figure S1) with SE, the dominant mode of AS (39), being more prevalent in RTR than Ensembl. Retained intron splicing events accounted for only 16.62% of all AS events in RTR which suggests that RTR is not likely affected by the incomplete splicing of pre-mRNA.

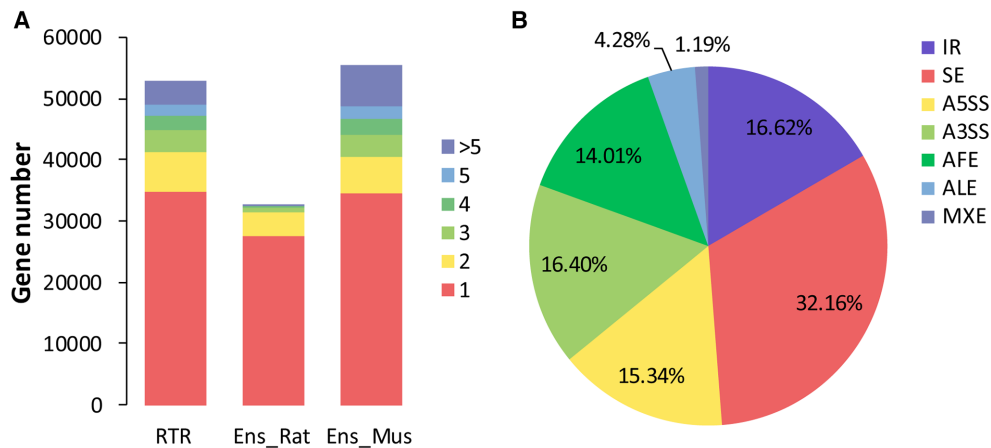
Splicing factors (SFs), which are RNA binding proteins that play key roles in AS regulation, often drive widespread differences in AS patterns across different tissues through tissue- and cell-type-specific expression (40). Therefore, we further explored those SFs in rat to understand the mechanisms of various splicing events. By homology mapping to human SFs (41), we identified 84 SF genes expressed in rat (Supplementary Table S2). Interestingly, *Esrp2* shows higher expression levels in liver, lung and kidney while it has very low expression levels in thymus and uterus; *Elavl2* shows obvious tissue specificity, which is highly expressed in brain at all development stages while having very low expression in other tissues (Supplementary Figure S2). These tissue-specific expression patterns of different SFs potentially contribute to the tissue-specific regulation of AS events in rat.

### Gene coding ability and function prediction

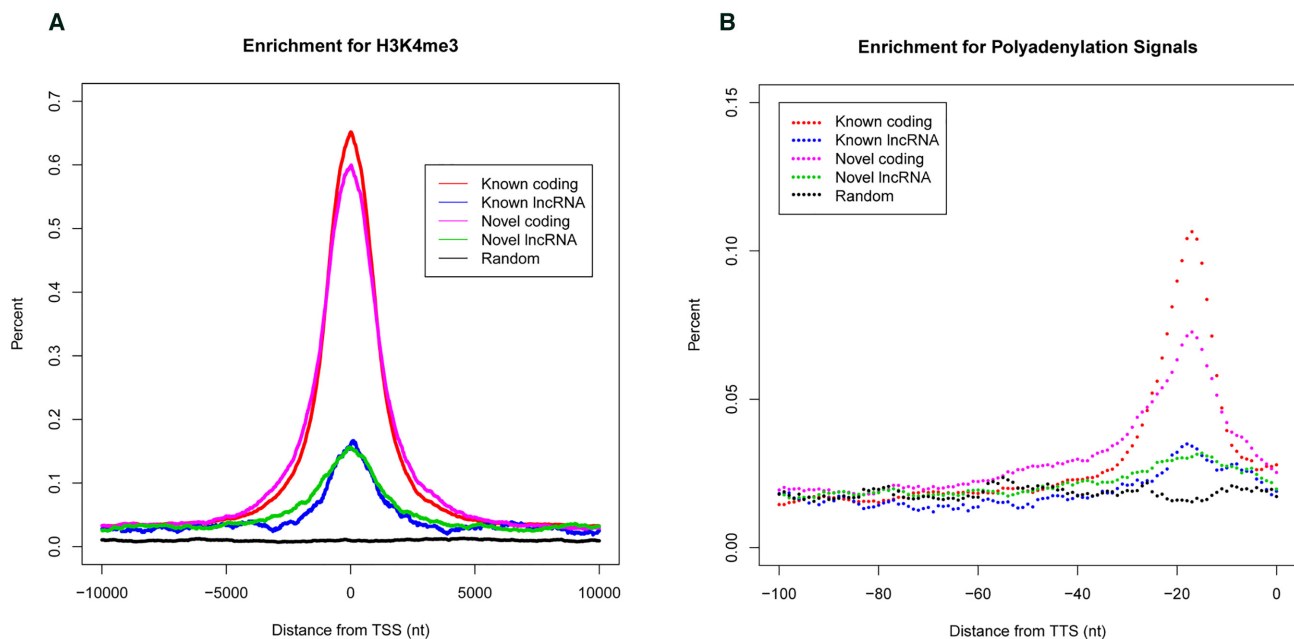
Since current annotations of rat proteins include only 7989 proteins in UniProtKB/Swiss-Prot and 27 902 proteins in UniProtKB/TrEMBL (42), we further predicted the potential coding ability of the newly annotated transcripts in RTR. Of all the 73 074 newly annotated transcripts, 34 213 and 24 728 were considered as highly confident coding transcripts and long noncoding transcripts, respectively (See 'Materials and Methods' section and Supplementary Tables S3 and 4). The 34 213 coding transcripts belong to 11 042 genes and these genes all have orthologs in other species. Among the newly annotated transcripts with high confidence in this study, 791 coding transcripts were located in 564 newly annotated genes while 21 301 long noncoding transcripts were located in 17 913 newly annotated genes. Interestingly, 39 newly annotated genes possess both coding and long noncoding transcripts with high confidence, similar to the 231 known genes with this property in Ensembl. Genes such as *SRA* (43) and *VegT* (44) have both coding and noncoding transcripts which indicates a gene may possess versatile functions (45). A published RT-PCR experiment confirmed three multi-exon lncRNAs in rat (Supplementary Figure S3D in (28)), two of which (*rnor.lincRNA13804051*, *rnor.lincRNA4244571*) are verified as lncRNAs with high confidence in RTR (RTRG.42653.1 and RTRG.13897.2, respectively); another multi-exon lncRNA (*rnor.lincRNA4825071*) has earlier been added to Ensembl (ENSRNOT00000085828).

To further corroborate active transcription of the newly annotated transcripts with high confidence, we intersected intervals surrounding the TSSs of expressed transcripts in male liver at 6 weeks in RTR with the ChIP-seq open source data for histone 3 lysine 4 trimethylation (H3K4me3) acquired from male liver at 9 weeks in rat (See 'Materials and Methods' section and Figure 2A) (28). For comparison, transcripts were classified into four categories: (i) known coding transcripts in Ensembl; (ii) known lncRNAs in Ensembl; (iii) novel coding transcripts with high confidence; and (iv) novel lncRNAs with high confidence. Maximal enrichment of H3K4me3 histone modification at the TSSs of the newly assembled transcripts with high confidence but not at randomly shuffled control regions suggests that these transcripts possess actively regulated promoters.

To support the accuracy of 3' end of the newly annotated transcripts with high confidence, we intersected intervals in the upstream 100 bp of the transcription termination sites (TTSS) of all newly annotated transcripts with high confidence in RTR with the hexamer polyA signals (AATAAA



**Figure 1.** (A) The number of genes with different isoforms. Each block in a bar corresponds to the number of genes with multiple isoforms. Three transcriptomes were compared, from left to right: RTR, Rat Ensembl release and Mouse Ensembl release. (B) The distribution of AS events in RTR.



**Figure 2.** TSS and TTS characterization in RTR. (A) ChIP-seq data enrichment for H3K4me3 from male liver at 9 weeks at 10-kb intervals surrounding expressed TSSs (FPKM > 0.5) in male liver at 6 weeks in RTR. (B) Hexamer polyA signal (AATAAA, ATTAAA) enrichment in the upstream 100 bp of TTSs in RTR.

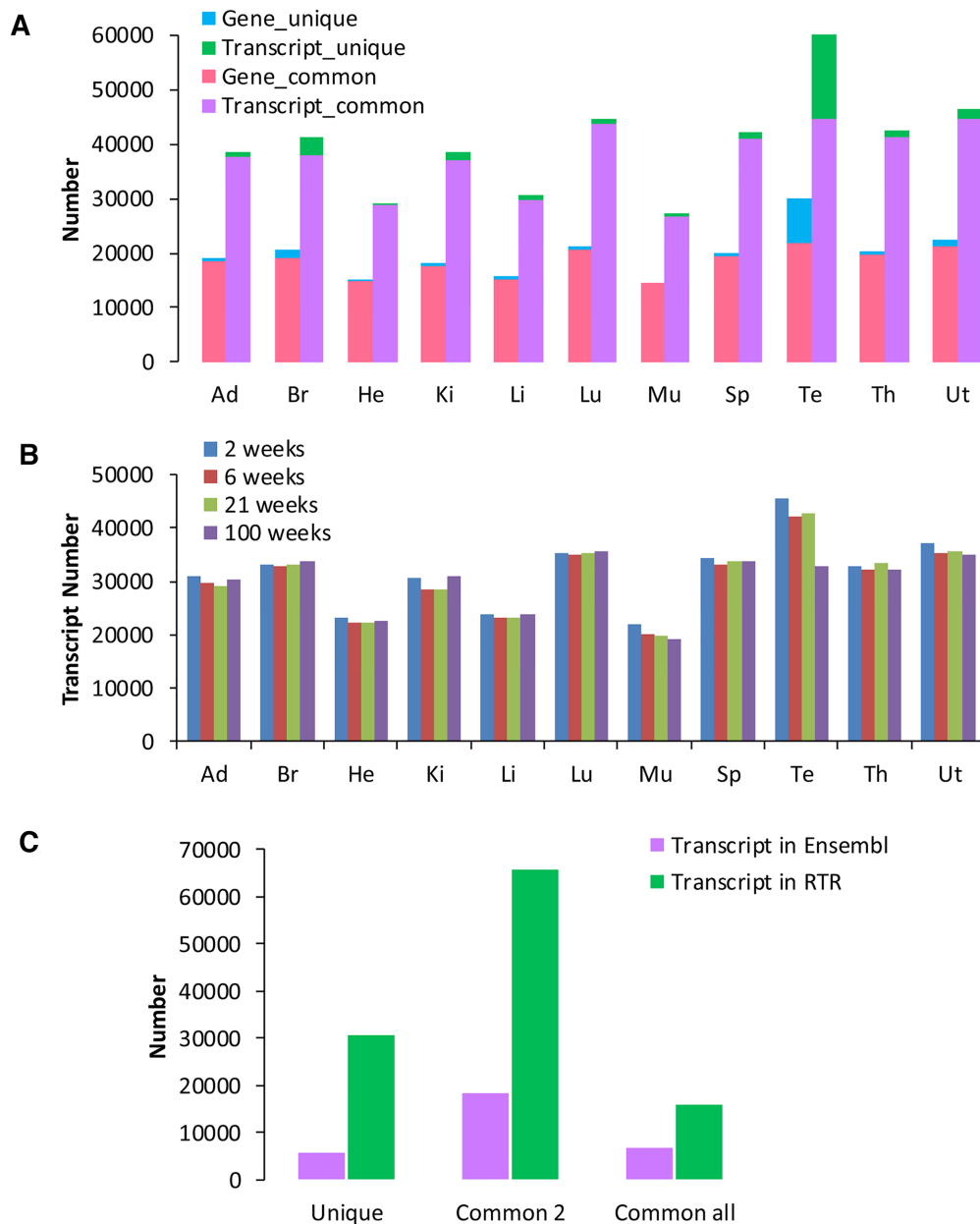
and AATAAA) (Figure 2B) (46). Transcripts were classified into four categories for comparison as stated above. Maximal enrichment of the hexamer polyA signals upstream from the TTSs of the newly assembled transcripts with high confidence but not at randomly shuffled control regions suggests that these transcripts possess actively polyadenylation sites.

The 34 213 newly annotated coding transcripts with high confidence were aligned to known proteins in all organisms in UniProtKB/Swiss-Prot (27) with BLASTx and we only retained the best hits (See ‘Materials and Methods’ section). Because of the relative paucity of rat proteins in the databases used by BLASTx, ~60% of the best hits were proteins from mouse and human instead of rat (Figure 3A and Supplementary Table S3). This cross-species transcript-

protein result supports the premise that the newly annotated transcripts identified in RTR actually code for proteins. There are 81 newly annotated genes encoding newly annotated proteins not appearing in known rat annotations but with unambiguous BLASTx hits in human or mouse (Supplementary Table S5). The novel coding transcripts with high confidence were then annotated with GO terms using Blast2GO suite and 33 589 of them were found associated with GO terms (Supplementary Table S6).

We further checked the cross-species conservation of 34 082 newly annotated junctions in the novel coding transcripts with high confidence; long noncoding RNAs (such as Air and Xist) were not examined because of lack of strong conservation (47). A total of 32 571 of 34 082 junctions belong to genes with homologous genes in human and 32





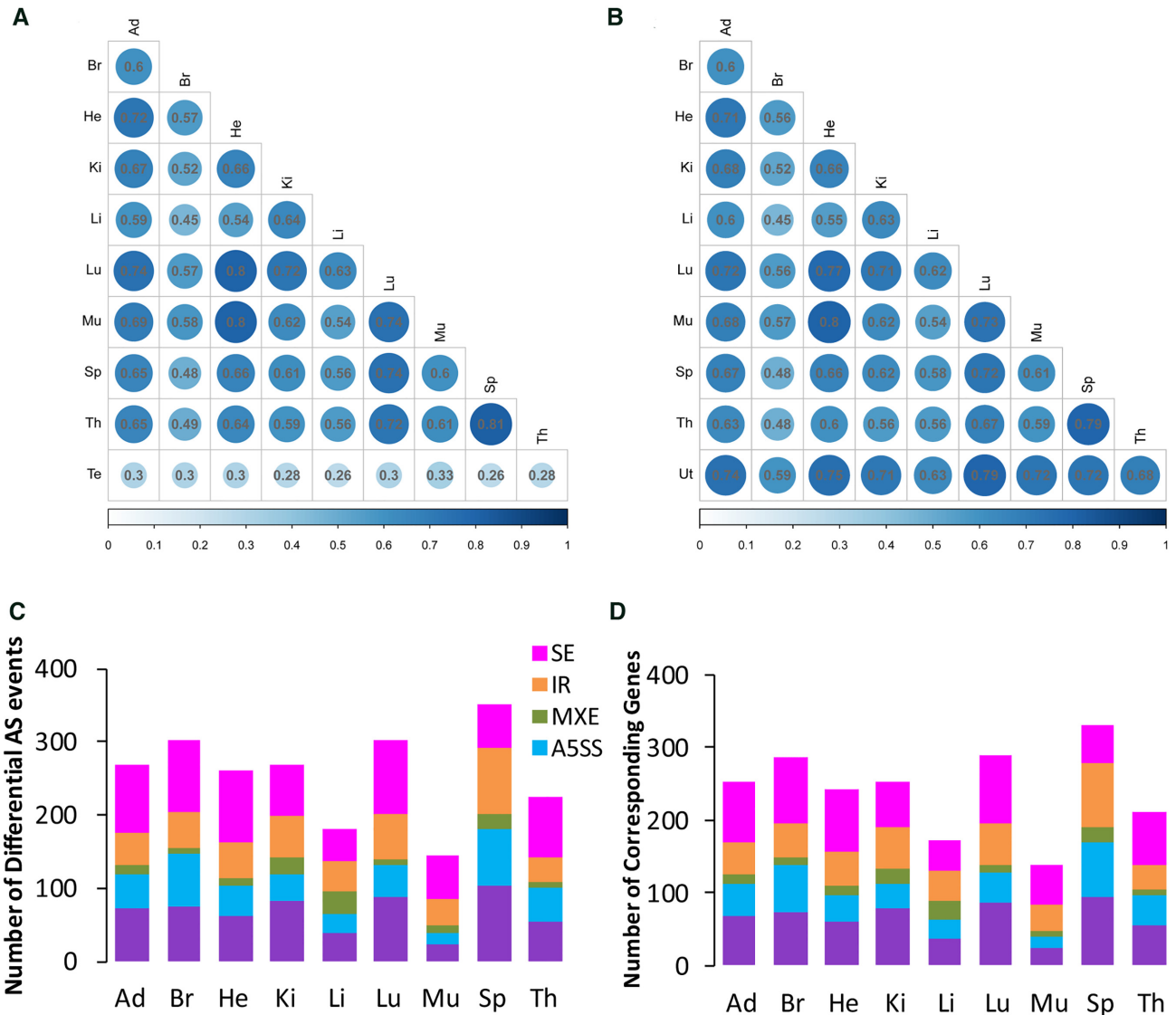
**Figure 4.** Expression analysis among tissues. (A) The distribution of genes and transcripts among tissues. Blue bar means the gene number uniquely expressed in the corresponding tissue. Pink bar means the number of genes not only expressed in the corresponding tissue but also expressed in at least one other tissue. The aggregate length of blue bar and pink bar is the number of genes expressed in the corresponding tissue. The format of gene information shown in the figure is the same as the one of transcript information. Tissues studied are: Ad, adrenal; Br, brain; He, heart; Ki, kidney; Lu, lung; Li, liver; Mu, skeletal muscle; Sp, spleen; Th, thymus; Te, testis; and Ut, uterus. (B) The distribution of transcripts under all of the 44 conditions. (C) The statistics of transcripts from Ensembl and RTR according to tissues. ‘Common 2’ denotes the transcripts that were identified in at least two tissues. ‘Common all’ denotes the transcripts that were identified in all of the 11 tissues.

of expression patterns of transcripts in RTR under all of the 44 conditions with different tissues and developmental stages (Figure 4B). We then made a two-way ANOVA analysis on the gene abundance of all genes in RTR and found that tissue type has a significant influence on gene abundance in 44 539 genes while developmental stage has a significant influence in only 25 439 genes (Bonferroni-adjusted,  $P$ -value < 0.05).

Transcripts in RTR are more tissue-specific than those in existing databases like Ensembl (Figure 4C). Transcripts which are expressed in at least two tissues are much more

prevalent than tissue-specific transcripts in both RTR and Ensembl, which demonstrates that there are close associations among tissues. For example, transcripts in heart and muscle are both enriched in several biological processes in Gene Ontology by hypergeometric test (37), e.g. sarcoplasmic reticulum calcium ion transport (GO:0070296), endoplasmic reticulum to cytosol transport (GO:1903513) (Bonferroni-adjusted,  $P$ -value < 0.05).

There are 15 852 transcripts expressed > 0.5 FPKM among all of the 11 tissues, which we deem as house-keeping transcripts (Supplementary Table S9). These transcripts



**Figure 5.** Spearman's correlation coefficients of gene abundance between all organs at 21 weeks in male (A) and female (B) rats, respectively. Numbers of differential AS events (C) and the corresponding genes (D) between male and female rats for all nine non-sex organs at 21 weeks.

show enrichment for fundamental functional pathways in KEGG (55) such as metabolic pathways, RNA transport and spliceosome (Bonferroni-adjusted,  $P$ -value < 0.05). We also found that 11 715 genes are expressed in all these tissues which we deem as house-keeping genes (Supplementary Table S10). A total of 849 house-keeping genes express differential isoforms among tissues (Supplementary Table S11) (56).

We then compared the gene abundance of RTR measured by FPKM with an external gene abundance dataset measured by RPKM across rat organ development (E-MTAB-6811) (57). Supplementary Table S12 shows the Spearman's correlation coefficients between the common biological conditions available from the two gene abundance datasets. RTR genes with transcripts in Ensembl were selected to conduct the common gene set for the calculation. Nearly all the coefficients are around 0.85 except for testis at 2 weeks which may result from different reference transcriptomes and technical effects.

### Differences in splicing and gene expression between males and females in adulthood

We calculated the Spearman's correlation coefficients of gene abundance between all organs at 21 weeks in male (Figure 5A) and female rats (Figure 5B), respectively (FDR-adjusted  $P$ -value < 0.05). We restricted our analysis to the genes which were considered to be expressed in at least one biological condition (FPKM > 0.5) for each comparison. Spleen and thymus, heart and muscle show the maximum values in both sexes as displayed in the hierarchical clustering heatmap of gene expression profiles in Figure 1C in the previous SEQC publication (17). Coefficients between testis and non-sex organs in male rats show the minimum values. Thymus shows the highest sum of absolute value of coefficient difference from all other non-sex organs (0.19), i.e. thymus in females shows lower correlations with all other non-sex organs than the male counterparts, which



may result from better thymic function in females compared with males (58).

We then calculated the Spearman's correlation coefficients of gene abundance between male and female rats in different non-sex organs (FDR-adjusted  $P$ -value < 0.05). Genes were selected as stated above. The coefficients are ~0.96 except for the coefficient in liver (0.92), which is consistent with the fact that the liver shows the most sex-different DEGs (1478) among non-sex organs as is shown in the result below.

Differential gene expression profiles between male and female rats for all nine non-sex organs at 21 weeks were analyzed with the DESeq2 package and a gene was considered differentially expressed when at least a 1.5-fold difference in expression existed between sexes ( $\log_2$ FoldChange > 0.585) plus a FDR-adjusted  $P$ -value < 0.05 (See 'Materials and Methods' section and Supplementary Tables S13 and 14). More genes showed sex-different expression in the liver and kidney as reported in previous publications (17,59). Totally, there are 3044 sex-different DEGs, only 12.5% of which are sex-different DEGs in more than one tissue. More genes were found preferentially expressed in male vs female. Male-dominant genes outnumbered female-dominant genes in each non-sex organ (1951 versus 1212 in all).

We used rMATS to identify five types of AS events between male and female rats for all nine non-sex organs at 21 weeks: SE, IR, MXE, alternative 5' donor site (A5SS), alternative 3' acceptor site (A3SS) (36). Among the five major types of differential AS events, SE was the most frequent in most organs except for spleen (See 'Materials and Methods' section). In contrast, MXE was the least common differential AS pattern (Figure 5C). Most of the differential spliced genes (DSGs) undergo only one differential AS event (Figure 5C and D).

To assess the global correlation in AS patterns between male and female rats for all nine non-sex organs at 21 weeks, we restricted our analysis to the alternatively spliced cassette exons with at least 20 reads mapped to one of the three exon-exon junctions in an AS event in all samples for comparison. We observed high correlations in the exon inclusion levels of these exons which means high similarities of AS events between male and female rats for all nine non-sex organs (Pearson correlation  $r$ : ~0.98,  $P$ -value < 2.2e-16) (Supplementary Figure S5). The exon inclusion level of an alternatively spliced cassette exon in any given tissue was estimated from the counts of ESTs mapped uniquely to the exon inclusion or skipping exon-exon junctions.

To analyze DEGs and DSGs between sex gonads, we compared testis and ovary at 16 weeks from the same external rat RNA-seq dataset used above (E-MTAB-6811) with DESeq2 and rMATS after processing the fastq files (35,36). A total of 4013 differential AS events were identified from 2361 DSGs. Similar to the expression trend in non-sex organs, more genes were preferentially expressed in male vs female (9079 versus 5087). Among 2361 DSGs detected in testis vs ovary at 16 weeks, 833 DSGs undergo more than one differential AS event, which is much higher than those multi-differential AS events happened between male and female rats in all nine non-sex organs (Figure 5C and D). Whether a gene is a DEG has no correlation with whether

it is a DSG (Chi-square test,  $P$ -value > 0.05) between male and female rats for the same non-sex organ at 21 weeks and between testis and ovary at 16 weeks.

### RTR presentation in website

RTR is freely available at <http://www.unimd.org/rtr/>. There are six sections in the website: Home, Browse, Downloads, FAQ, Search and Contact Us. In the Browse section, our website displays all 52 807 genes in the order of their locations in the rat reference genome (rnor6). IDs of newly annotated genes begin with 'RTRG.' while IDs of genes/transcripts in known databases (Ensembl, RefSeq) are retained. Transcript information can be searched by clicking the Gene ID field of the queried gene. A gene can be displayed in Genome Browser of UCSC by clicking its Location field. The information in each cell in the table can be displayed in real time by typing key words in the search box. Since there is loading delay in the Browse section owing to the large dataset, we offer the Search section without loading delay. Records can be displayed by typing key words in the search box in the Search section.

For each selected gene, we displayed the expression profile in each tissue and developmental stage in a boxplot. We also calculated the positively/negatively correlated genes of the selected gene by organ. We displayed these highly correlated genes with the selected gene in a table with correlation coefficients from high to low with the minimum value over 0.9 in the organ-specific mode and over 0.7 in the global-organ mode. We only calculated the genes with the expression level over 1 FPKM in at least two samples. By hovering the mouse over the correlated gene in the table, the correlation coefficient is displayed; upon mouse click, the boxplot of this correlated gene is displayed.

## DISCUSSION

RNA-seq data provide great advantages in both biological status and genome coverage for the comprehensive understanding of the transcriptome. By developing and applying novel software and streamlined analysis pipelines for integrating dispersed RNA-seq data into reliable and reusable data resources, transcriptome analysis and mining to understand biological function can be enhanced. In this study, we reconstructed a rat transcriptome by combining existing rat annotation resources with rat BodyMap data. This new comprehensive rat transcriptome now has completeness and annotation comparable to the well-annotated mouse transcriptome. Transcripts in RTR cover over 97% of the identified transcripts in 5 other datasets which verifies the accuracy of RTR (Supplementary Table S1). This small difference may be attributable to unique transcripts in a certain individual and sequencing errors.

Although the analysis pipeline has been documented, reliable sample-specific transcriptome needs improvement in each link. Since novel coding transcripts of high confidence in RTR were predicted in-silico, it is worthwhile to consider some additional studies to produce specific antibodies of some interesting newly discovered coding isoform sequences of genes. As the transcriptome is better defined, the accurate definition of each gene becomes more complicated.

RTR is a re-annotated transcriptome derived from common tissues of different developmental stages under normal experimental conditions. In its present development, RTR may not contain all genes/transcripts because RNA-seq data are not available from every rat tissue/cell type under all possible experimental conditions, diseases and pathologies. Although expression of genes/transcripts may oscillate with a period of about 24 h (60), the RTR website only covers the expression of genes/transcripts at one point in the 44 conditions.

However, RTR appears to accurately and comprehensively represent the transcriptome landscape of the rat to a considerable extent (Supplementary Table S15). For example, RTR contained 98.5% of transcripts identified in a normal liver sample (SRP028932; Supplementary Table S1), while only 94.3% were identified in hypertensive liver samples from the same experiment. Further, RTR identified 98.6% of transcripts in an independent study of the whole kidney (SRP041131; Supplementary Table S1) but only 97.2% of the transcripts in the S1 renal proximal tubule from the same experiment. Thus, for a more complete definition of the rat transcriptome, additional RNA-seq data is required from tissues and cell types not represented in the Rat BodyMap database, as well as transcripts from rats with disease/pathological states and under different environmental conditions.

The rat has been widely used in toxicological studies. However, results from preclinical findings in the rat model sometimes cannot be reliably extrapolated to human clinical trials. The underlying mechanisms behind this problem have not been fully understood. The incomplete annotation for the rat genome and transcriptome has seriously inhibited the cross-species comparison studies necessary to investigate these inconsistencies between rat and human, and this may have contributed to the limitations of this animal model. Our new comprehensively re-annotated transcriptome provides a valuable reference for biomedical research in understanding human diseases, and performing studies on drug toxicity and adverse effects using the rat animal model.

Of the detected 73 074 newly annotated transcripts, 19.3% of the transcripts could not be assigned a coding function by our pipeline. Inconsistent results from software used for the judgement of coding ability appeared to be the cause. Newly annotated transcripts with ambiguous coding ability may be due to shortcomings of these softwares or because a transcript may act in both coding and noncoding roles (45,61).

This comprehensive re-analysis of the rat BodyMap RNA-seq data significantly expands the rat transcriptome. The numbers of genes and transcripts were increased greatly over existing databases. The ratio of multi-isoform genes has been extensively increased from 15.4% in Ensembl to 34.3% in RTR (Figure 1). Based on the information by tissue in RTR, we found that most of the transcripts are widely shared among tissues and we also identified a more comprehensive set of house-keeping genes and transcripts than ever before. This new rat transcriptome provides an essential reference for genetics and gene expression studies in rat disease and toxicity models.

## SUPPLEMENTARY DATA

Supplementary Data are available at NAR Online.

## ACKNOWLEDGEMENTS

T.S. and X.J. designed the study and wrote the manuscript. Data analysis and interpretation were performed by X.J. and P.L. The RTR online database was designed and constructed by T.S. and X.J. P.L., G.C., W.X., L.S., B.N., H.H., Z.L., J.L., L.G., D.P.K., P.P.L., L.Z., W.B., Y.H., J.H., Y.Z. and W.T. offered suggestions. T.S., X.J., J.C.F., Y.Z. and W.T. revised the manuscript. All authors read and approved the final manuscript.

## FUNDING

China Human Proteome Project [2014DFB30010, 2014DFB30030]; National Science and Technology Major Project [2019ZX09301-132]; National Key Research and Development Program of China [2015AA020108]; National Science Foundation of China [31671377, 31771460, 31801118]; Program for Changjiang Scholars, Innovative Research Team in University [IRT\_15R13]; Shanghai Municipal Science and Technology Major Project [2017SHZDZX01]; Open Research Fund of Key Laboratory of Advanced Theory and Application in Statistics and Data Science—MOE, ECNU, Beihang University & Capital Medical University Advanced Innovation Center for Big Data-Based Precision Medicine Plan [BHME-201804, BHME-201904] and The Special Fund of the Pediatric Medical Coordinated Development Center of Beijing Hospitals Authority [XTCX201809]. Funding for open access charge: National Science and Technology Major Project [2019ZX09301-132].

*Conflict of interest statement.* The authors declared no potential conflicts of interest.

## REFERENCES

- Barrett, T. and Edgar, R. (2006) Mining microarray data at NCBI's Gene Expression Omnibus (GEO)\*. *Methods Mol. Biol.*, **338**, 175–190.
- Davis, S. and Meltzer, P.S. (2007) GEOquery: a bridge between the Gene Expression Omnibus (GEO) and BioConductor. *Bioinformatics*, **23**, 1846–1847.
- Ji, X.J., Feng, G.S., Chen, G. and Shi, T.L. (2018) Lack of correlation between aristolochic acid exposure and hepatocellular carcinoma. *Sci. China Life Sci.*, **61**, 727–728.
- Gustincich, S., Sandelin, A., Plessy, C., Katayama, S., Simone, R., Lazarevic, D., Hayashizaki, Y. and Carninci, P. (2006) The complexity of the mammalian transcriptome. *J. Physiol.*, **575**, 321–332.
- Pan, Q., Shai, O., Lee, L.J., Frey, B.J. and Blencowe, B.J. (2008) Deep surveying of alternative splicing complexity in the human transcriptome by high-throughput sequencing. *Nat. Genet.*, **40**, 1413–1415.
- Xue, C., Zhang, H., Lin, Q., Fan, R. and Gao, C. (2018) Manipulating mRNA splicing by base editing in plants. *Sci. China Life Sci.*, **61**, 1293–1300.
- Zerbino, D.R., Achuthan, P., Akanni, W., Amode, M.R., Barrell, D., Bhai, J., Billis, K., Cummins, C., Gall, A., Giron, C.G. *et al.* (2018) Ensembl 2018. *Nucleic Acids Res.*, **46**, D754–D761.
- Rosenbloom, K.R., Dreszer, T.R., Long, J.C., Malladi, V.S., Sloan, C.A., Raney, B.J., Cline, M.S., Karolchik, D., Barber, G.P., Clawson, H. *et al.* (2012) ENCODE whole-genome data in the UCSC Genome Browser: update 2012. *Nucleic Acids Res.*, **40**, D912–D917.

9. Haas,B.J., Delcher,A.L., Mount,S.M., Wortman,J.R., Smith,R.K. Jr, Hannick,L.I., Maiti,R., Ronning,C.M., Rusch,D.B., Town,C.D. *et al.* (2003) Improving the Arabidopsis genome annotation using maximal transcript alignment assemblies. *Nucleic Acids Res.*, **31**, 5654–5666.
10. Rhind,N., Chen,Z., Yassour,M., Thompson,D.A., Haas,B.J., Habib,N., Wapinski,I., Roy,S., Lin,M.F., Heiman,D.I. *et al.* (2011) Comparative functional genomics of the fission yeasts. *Science*, **332**, 930–936.
11. Djebali,S., Davis,C.A., Merkel,A., Dobin,A., Lassmann,T., Mortazavi,A., Tanzer,A., Lagarde,J., Lin,W., Schlesinger,F. *et al.* (2012) Landscape of transcription in human cells. *Nature*, **489**, 101–108.
12. Thierry-Mieg,D. and Thierry-Mieg,J. (2006) AceView: a comprehensive cDNA-supported gene and transcripts annotation. *Genome Biol.*, **7**, S12.
13. Haas,B.J., Zeng,Q., Pearson,M.D., Cuomo,C.A. and Wortman,J.R. (2011) Approaches to fungal genome annotation. *Mycology*, **2**, 118–141.
14. Garber,M., Grabherr,M.G., Guttman,M. and Trapnell,C. (2011) Computational methods for transcriptome annotation and quantification using RNA-seq. *Nat. Methods*, **8**, 469–477.
15. Chen,G., Shi,T. and Shi,L. (2017) Characterizing and annotating the genome using RNA-seq data. *Sci. China Life Sci.*, **60**, 116–125.
16. Pauli,A., Valen,E., Lin,M.F., Garber,M., Vastenhouw,N.L., Levin,J.Z., Fan,L., Sandelin,A., Rinn,J.L., Regev,A. *et al.* (2012) Systematic identification of long noncoding RNAs expressed during zebrafish embryogenesis. *Genome Res.*, **22**, 577–591.
17. Yu,Y., Fuscoe,J.C., Zhao,C., Guo,C., Jia,M., Qing,T., Bannon,D.I., Lancashire,L., Bao,W., Du,T. *et al.* (2014) A rat RNA-Seq transcriptomic BodyMap across 11 organs and 4 developmental stages. *Nat. Commun.*, **5**, 3230.
18. Wang,K., Vijay,V. and Fuscoe,J.C. (2017) Stably expressed genes involved in basic cellular functions. *PLoS One*, **12**, e0170813.
19. Leinonen,R., Sugawara,H., Shumway,M. and International Nucleotide Sequence Database, C. (2011) The sequence read archive. *Nucleic Acids Res.*, **39**, D19–D21.
20. Shimoyama,M., De Pons,J., Hayman,G.T., Laulederkind,S.J., Liu,W., Nigam,R., Petri,V., Smith,J.R., Tutaj,M., Wang,S.J. *et al.* (2015) The Rat Genome Database 2015: genomic, phenotypic and environmental variations and disease. *Nucleic Acids Res.*, **43**, D743–D750.
21. Pruitt,K.D., Tatusova,T., Brown,G.R. and Maglott,D.R. (2012) NCBI Reference Sequences (RefSeq): current status, new features and genome annotation policy. *Nucleic Acids Res.*, **40**, D130–D135.
22. Kim,D., Langmead,B. and Salzberg,S.L. (2015) HISAT: a fast spliced aligner with low memory requirements. *Nat. Methods*, **12**, 357–360.
23. Pertea,M., Pertea,G.M., Antonescu,C.M., Chang,T.C., Mendell,J.T. and Salzberg,S.L. (2015) StringTie enables improved reconstruction of a transcriptome from RNA-seq reads. *Nat. Biotechnol.*, **33**, 290–295.
24. Ji,X., Tong,W., Ning,B., Mason,C.E., Kreil,D.P., Labaj,P.P., Chen,G. and Shi,T. (2019) QuaPra: efficient transcript assembly and quantification using quadratic programming with Apriori algorithm. *Sci. China Life Sci.*, **62**, 937–946.
25. Wang,L., Park,H.J., Dasari,S., Wang,S., Kocher,J.P. and Li,W. (2013) CPAT: coding-potential assessment tool using an alignment-free logistic regression model. *Nucleic Acids Res.*, **41**, e74.
26. El-Gebali,S., Mistry,J., Bateman,A., Eddy,S.R., Luciani,A., Potter,S.C., Qureshi,M., Richardson,L.J., Salazar,G.A., Smart,A. *et al.* (2019) The Pfam protein families database in 2019. *Nucleic Acids Res.*, **47**, D427–D432.
27. Altschul,S.F., Madden,T.L., Schaffer,A.A., Zhang,J., Zhang,Z., Miller,W. and Lipman,D.J. (1997) Gapped BLAST and PSI-BLAST: a new generation of protein database search programs. *Nucleic Acids Res.*, **25**, 3389–3402.
28. Kutter,C., Watt,S., Stefflova,K., Wilson,M.D., Goncalves,A., Ponting,C.P., Odom,D.T. and Marques,A.C. (2012) Rapid turnover of long noncoding RNAs and the evolution of gene expression. *PLoS Genet.*, **8**, e1002841.
29. Quinlan,A.R. (2014) BEDTools: the Swiss-Army tool for genome feature analysis. *Curr. Protoc. Bioinform.*, **47**, 11.12.1–11.12.34.
30. Li,W., Cowley,A., Uludag,M., Gur,T., McWilliam,H., Squizzato,S., Park,Y.M., Buso,N. and Lopez,R. (2015) The EMBL-EBI bioinformatics web and programmatic tools framework. *Nucleic Acids Res.*, **43**, W580–W584.
31. Haeussler,M., Zweig,A.S., Tyner,C., Speir,M.L., Rosenbloom,K.R., Raney,B.J., Lee,C.M., Lee,B.T., Hinrichs,A.S., Gonzalez,J.N. *et al.* (2019) The UCSC Genome Browser database: 2019 update. *Nucleic Acids Res.*, **47**, D853–D858.
32. Tempel,S. (2012) Using and understanding RepeatMasker. *Methods Mol. Biol.*, **859**, 29–51.
33. Quinlan,A.R. and Hall,I.M. (2010) BEDTools: a flexible suite of utilities for comparing genomic features. *Bioinformatics*, **26**, 841–842.
34. Liao,Y., Smyth,G.K. and Shi,W. (2014) featureCounts: an efficient general purpose program for assigning sequence reads to genomic features. *Bioinformatics*, **30**, 923–930.
35. Love,M.I., Huber,W. and Anders,S. (2014) Moderated estimation of fold change and dispersion for RNA-seq data with DESeq2. *Genome Biol.*, **15**, 550.
36. Shen,S., Park,J.W., Lu,Z.X., Lin,L., Henry,M.D., Wu,Y.N., Zhou,Q. and Xing,Y. (2014) rMATS: robust and flexible detection of differential alternative splicing from replicate RNA-Seq data. *PNAS*, **111**, E5593–E5601.
37. The Gene Ontology, C. (2019) The Gene Ontology Resource: 20 years and still GOing strong. *Nucleic Acids Res.*, **47**, D330–D338.
38. Foissac,S. and Sasmeth,M. (2007) ASTALAVISTA: dynamic and flexible analysis of alternative splicing events in custom gene datasets. *Nucleic Acids Res.*, **35**, W297–W299.
39. Sasmeth,M., Foissac,S. and Guigo,R. (2008) A general definition and nomenclature for alternative splicing events. *PLoS Comput. Biol.*, **4**, e1000147.
40. Chen,H.C. and Cheng,S.C. (2012) Functional roles of protein splicing factors. *Biosci. Rep.*, **32**, 345–359.
41. Kim,J., Zhao,K., Jiang,P., Lu,Z.X., Wang,J., Murray,J.C. and Xing,Y. (2012) Transcriptome landscape of the human placenta. *BMC Genomics*, **13**, 115.
42. UniProt,C. (2019) UniProt: a worldwide hub of protein knowledge. *Nucleic Acids Res.*, **47**, D506–D515.
43. Leygue,E. (2007) Steroid receptor RNA activator (SRA1): unusual bifaceted gene products with suspected relevance to breast cancer. *Nucl. Recept. Signal.*, **5**, e006.
44. Kloc,M., Wilk,K., Vargas,D., Shirato,Y., Bilinski,S. and Etkin,L.D. (2005) Potential structural role of non-coding and coding RNAs in the organization of the cytoskeleton at the vegetal cortex of *Xenopus* oocytes. *Development*, **132**, 3445–3457.
45. Chen,G., Yang,J., Chen,J., Song,Y., Cao,R., Shi,T. and Shi,L. (2016) Identifying and annotating human bifunctional RNAs reveals their versatile functions. *Sci. China Life Sci.*, **59**, 981–992.
46. Fu,Y., Sun,Y., Li,Y., Li,J., Rao,X., Chen,C. and Xu,A. (2011) Differential genome-wide profiling of tandem 3' UTRs among human breast cancer and normal cells by high-throughput sequencing. *Genome Res.*, **21**, 741–747.
47. Nesterova,T.B., Barton,S.C., Surani,M.A. and Brockdorff,N. (2001) Loss of Xist imprinting in diploid parthenogenetic preimplantation embryos. *Dev. Biol.*, **235**, 343–350.
48. Bucher,E., Reinders,J. and Mirouze,M. (2012) Epigenetic control of transposon transcription and mobility in Arabidopsis. *Curr. Opin. Plant Biol.*, **15**, 503–510.
49. Mohammad,F., Pandey,R.R., Nagano,T., Chakalova,L., Mondal,T., Fraser,P. and Kanduri,C. (2008) Kcnq1ot1/Lit1 noncoding RNA mediates transcriptional silencing by targeting to the perinucleolar region. *Mol. Cell. Biol.*, **28**, 3713–3728.
50. Wutz,A., Rasmussen,T.P. and Jaenisch,R. (2002) Chromosomal silencing and localization are mediated by different domains of Xist RNA. *Nat. Genet.*, **30**, 167–174.
51. Kapusta,A., Kronenberg,Z., Lynch,V.J., Zhuo,X., Ramsay,L., Bourque,G., Yandell,M. and Feschotte,C. (2013) Transposable elements are major contributors to the origin, diversification, and regulation of vertebrate long noncoding RNAs. *PLoS Genet.*, **9**, e1003470.
52. Kim,J. and Deinger,P.L. (1996) Recent amplification of rat ID sequences. *J. Mol. Biol.*, **261**, 322–327.
53. Serdobova,I.M. and Kramerov,D.A. (1998) Short retroposons of the B2 superfamily: evolution and application for the study of rodent phylogeny. *J. Mol. Evol.*, **46**, 202–214.
54. Djureinovic,D., Fagerberg,L., Hallstrom,B., Danielsson,A., Lindskog,C., Uhlen,M. and Ponten,F. (2014) The human testis-specific proteome defined by transcriptomics and antibody-based profiling. *Mol. Hum. Reprod.*, **20**, 476–488.

55. Kanehisa, M., Sato, Y., Kawashima, M., Furumichi, M. and Tanabe, M. (2016) KEGG as a reference resource for gene and protein annotation. *Nucleic Acids Res.*, **44**, D457–D462.
56. Trapnell, C., Williams, B.A., Pertea, G., Mortazavi, A., Kwan, G., van Baren, M.J., Salzberg, S.L., Wold, B.J. and Pachter, L. (2010) Transcript assembly and quantification by RNA-Seq reveals unannotated transcripts and isoform switching during cell differentiation. *Nat. Biotechnol.*, **28**, 511–515.
57. Cardoso-Moreira, M., Halbert, J., Valloton, D., Velten, B., Chen, C., Shao, Y., Liechti, A., Ascencao, K., Rummel, C., Ovchinnikova, S. *et al.* (2019) Gene expression across mammalian organ development. *Nature*, **571**, 505–509.
58. Pido-Lopez, J., Imami, N. and Aspinall, R. (2001) Both age and gender affect thymic output: more recent thymic migrants in females than males as they age. *Clin. Exp. Immunol.*, **125**, 409–413.
59. Huby, R.D.J., Glaves, P. and Jackson, R. (2014) The incidence of sexually dimorphic gene expression varies greatly between tissues in the rat. *PLoS One*, **9**, e115792.
60. Yu, Q. (2018) Biological clock: the oscillator of gene expression. *Sci. China Life Sci.*, **61**, 128–130.
61. Sampath, K. and Ephrussi, A. (2016) CncRNAs: RNAs with both coding and non-coding roles in development. *Development*, **143**, 1234–1241.